



Full wwPDB X-ray Structure Validation Report ⓘ

Sep 6, 2023 – 11:15 AM EDT

PDB ID : 4DK5
Title : Crystal structure of human PI3K-gamma in complex with a pyridyl-triazine inhibitor
Authors : Whittington, D.A.; Tang, J.; Yakowec, P.
Deposited on : 2012-02-03
Resolution : 2.95 Å(reported)

This is a Full wwPDB X-ray Structure Validation Report for a publicly released PDB entry.

We welcome your comments at validation@mail.wwpdb.org

A user guide is available at

<https://www.wwpdb.org/validation/2017/XrayValidationReportHelp>

with specific help available everywhere you see the ⓘ symbol.

The types of validation reports are described at

<http://www.wwpdb.org/validation/2017/FAQs#types>.

The following versions of software and data (see [references ⓘ](#)) were used in the production of this report:

MolProbity : 4.02b-467
Mogul : 1.8.5 (274361), CSD as541be (2020)
Xtriage (Phenix) : 1.13
EDS : 2.35
buster-report : 1.1.7 (2018)
Percentile statistics : 20191225.v01 (using entries in the PDB archive December 25th 2019)
Refmac : 5.8.0158
CCP4 : 7.0.044 (Gargrove)
Ideal geometry (proteins) : Engh & Huber (2001)
Ideal geometry (DNA, RNA) : Parkinson et al. (1996)
Validation Pipeline (wwPDB-VP) : 2.35

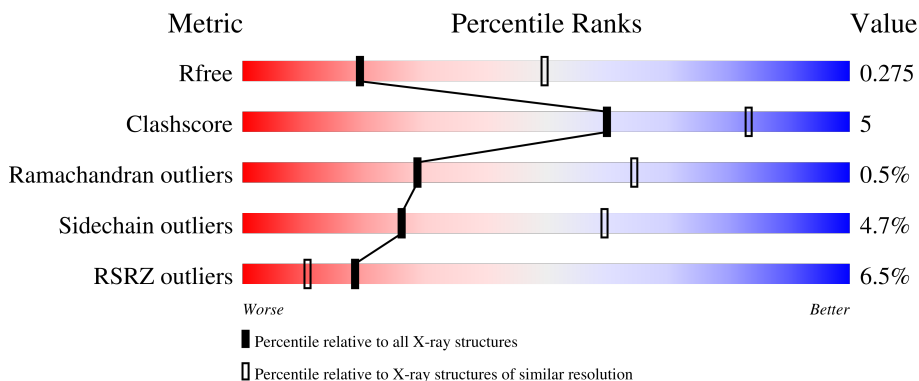
1 Overall quality at a glance i

The following experimental techniques were used to determine the structure:

X-RAY DIFFRACTION

The reported resolution of this entry is 2.95 Å.

Percentile scores (ranging between 0-100) for global validation metrics of the entry are shown in the following graphic. The table shows the number of entries on which the scores are based.



Metric	Whole archive (#Entries)	Similar resolution (#Entries, resolution range(Å))
R_{free}	130704	3104 (3.00-2.92)
Clashscore	141614	3462 (3.00-2.92)
Ramachandran outliers	138981	3340 (3.00-2.92)
Sidechain outliers	138945	3343 (3.00-2.92)
RSRZ outliers	127900	2986 (3.00-2.92)

The table below summarises the geometric issues observed across the polymeric chains and their fit to the electron density. The red, orange, yellow and green segments of the lower bar indicate the fraction of residues that contain outliers for ≥ 3 , 2, 1 and 0 types of geometric quality criteria respectively. A grey segment represents the fraction of residues that are not modelled. The numeric value for each fraction is indicated below the corresponding segment, with a dot representing fractions $\leq 5\%$. The upper red bar (where present) indicates the fraction of residues that have poor fit to the electron density. The numeric value is given above the bar.

Mol	Chain	Length	Quality of chain
1	A	959	<div style="display: flex; align-items: center;"> <div style="width: 6%; height: 10px; background-color: red; margin-right: 5px;"></div> <div style="width: 73%; height: 10px; background-color: green; margin-right: 5px;"></div> <div style="width: 13%; height: 10px; background-color: yellow; margin-right: 5px;"></div> <div style="width: 13%; height: 10px; background-color: grey;"></div> </div> <p style="margin-top: 5px;">6% 73% 13% • 13%</p>

2 Entry composition [i](#)

There are 4 unique types of molecules in this entry. The entry contains 6820 atoms, of which 0 are hydrogens and 0 are deuteriums.

In the tables below, the ZeroOcc column contains the number of atoms modelled with zero occupancy, the AltConf column contains the number of residues with at least one atom in alternate conformation and the Trace column contains the number of residues modelled with at most 2 atoms.

- Molecule 1 is a protein called Phosphatidylinositol-4,5-bisphosphate 3-kinase catalytic subunit gamma isoform.

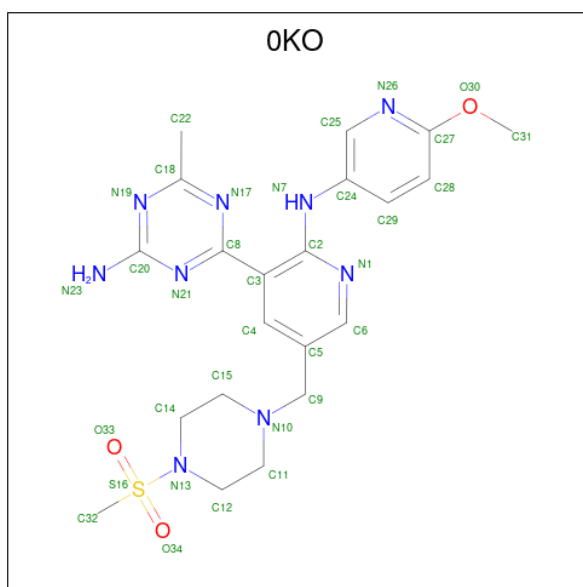
Mol	Chain	Residues	Atoms					ZeroOcc	AltConf	Trace
			Total	C	N	O	S			
1	A	834	6757	4343	1150	1230	34	0	0	0

- Molecule 2 is SULFATE ION (three-letter code: SO4) (formula: O₄S).



Mol	Chain	Residues	Atoms			ZeroOcc	AltConf
			Total	O	S		
2	A	1	5	4	1	0	0
2	A	1	5	4	1	0	0
2	A	1	5	4	1	0	0

- Molecule 3 is 4-(2-[(6-methoxypyridin-3-yl)amino]-5-[[4-(methylsulfonyl)piperazin-1-yl]methyl]pyridin-3-yl)-6-methyl-1,3,5-triazin-2-amine (three-letter code: OKO) (formula: C₂₁H₂₇N₉O₃S).



Mol	Chain	Residues	Atoms					ZeroOcc	AltConf
			Total	C	N	O	S		
3	A	1	34	21	9	3	1	0	0

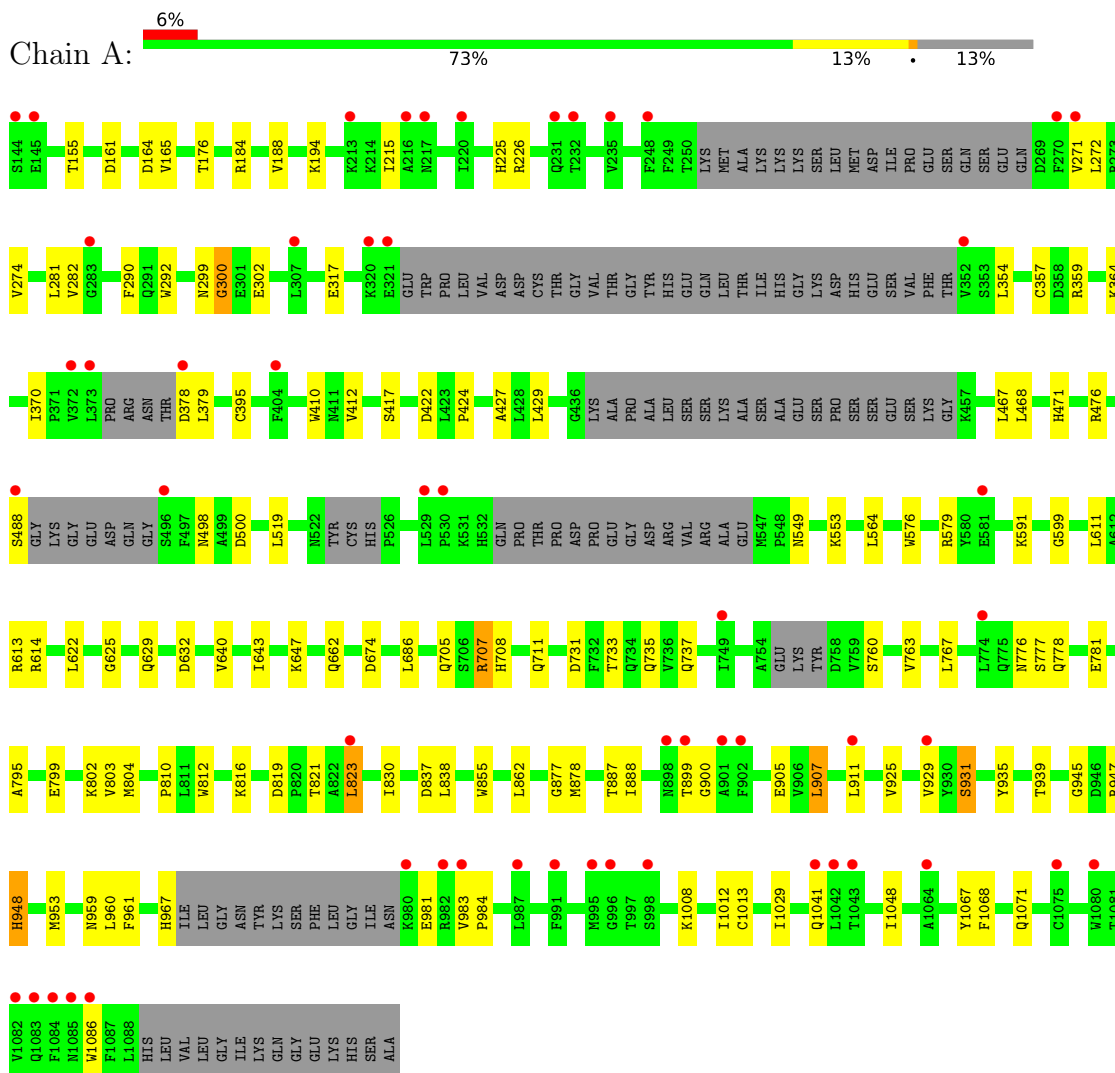
- Molecule 4 is water.

Mol	Chain	Residues	Atoms		ZeroOcc	AltConf
4	A	14	Total	O	0	0
			14	14		

3 Residue-property plots [i](#)

These plots are drawn for all protein, RNA, DNA and oligosaccharide chains in the entry. The first graphic for a chain summarises the proportions of the various outlier classes displayed in the second graphic. The second graphic shows the sequence view annotated by issues in geometry and electron density. Residues are color-coded according to the number of geometric quality criteria for which they contain at least one outlier: green = 0, yellow = 1, orange = 2 and red = 3 or more. A red dot above a residue indicates a poor fit to the electron density ($RSRZ > 2$). Stretches of 2 or more consecutive residues without any outlier are shown as a green connector. Residues present in the sample, but not in the model, are shown in grey.

- Molecule 1: Phosphatidylinositol-4,5-bisphosphate 3-kinase catalytic subunit gamma isoform



4 Data and refinement statistics

Property	Value	Source
Space group	C 1 2 1	Depositor
Cell constants a, b, c, α , β , γ	143.78Å 68.23Å 107.18Å 90.00° 94.99° 90.00°	Depositor
Resolution (Å)	50.00 – 2.95 44.71 – 2.95	Depositor EDS
% Data completeness (in resolution range)	99.6 (50.00-2.95) 99.6 (44.71-2.95)	Depositor EDS
R_{merge}	0.07	Depositor
R_{sym}	(Not available)	Depositor
$\langle I/\sigma(I) \rangle$ ¹	2.21 (at 2.96Å)	Xtrriage
Refinement program	REFMAC	Depositor
R, R_{free}	0.219 , 0.289 0.210 , 0.275	Depositor DCC
R_{free} test set	1584 reflections (7.21%)	wwPDB-VP
Wilson B-factor (Å ²)	81.4	Xtrriage
Anisotropy	0.045	Xtrriage
Bulk solvent k_{sol} (e/Å ³), B_{sol} (Å ²)	0.32 , 51.6	EDS
L-test for twinning ²	$\langle L \rangle = 0.49$, $\langle L^2 \rangle = 0.32$	Xtrriage
Estimated twinning fraction	No twinning to report.	Xtrriage
F_o, F_c correlation	0.94	EDS
Total number of atoms	6820	wwPDB-VP
Average B, all atoms (Å ²)	87.0	wwPDB-VP

Xtrriage's analysis on translational NCS is as follows: *The largest off-origin peak in the Patterson function is 6.34% of the height of the origin peak. No significant pseudotranslation is detected.*

¹Intensities estimated from amplitudes.

²Theoretical values of $\langle |L| \rangle$, $\langle L^2 \rangle$ for acentric reflections are 0.5, 0.333 respectively for untwinned datasets, and 0.375, 0.2 for perfectly twinned datasets.

5 Model quality [i](#)

5.1 Standard geometry [i](#)

Bond lengths and bond angles in the following residue types are not validated in this section: 0KO, SO4

The Z score for a bond length (or angle) is the number of standard deviations the observed value is removed from the expected value. A bond length (or angle) with $|Z| > 5$ is considered an outlier worth inspection. RMSZ is the root-mean-square of all Z scores of the bond lengths (or angles).

Mol	Chain	Bond lengths		Bond angles	
		RMSZ	# Z >5	RMSZ	# Z >5
1	A	0.37	0/6901	0.52	0/9333

There are no bond length outliers.

There are no bond angle outliers.

There are no chirality outliers.

There are no planarity outliers.

5.2 Too-close contacts [i](#)

In the following table, the Non-H and H(model) columns list the number of non-hydrogen atoms and hydrogen atoms in the chain respectively. The H(added) column lists the number of hydrogen atoms added and optimized by MolProbity. The Clashes column lists the number of clashes within the asymmetric unit, whereas Symm-Clashes lists symmetry-related clashes.

Mol	Chain	Non-H	H(model)	H(added)	Clashes	Symm-Clashes
1	A	6757	0	6804	61	0
2	A	15	0	0	0	0
3	A	34	0	27	1	0
4	A	14	0	0	1	0
All	All	6820	0	6831	62	0

The all-atom clashscore is defined as the number of clashes found per 1000 atoms (including hydrogen atoms). The all-atom clashscore for this structure is 5.

All (62) close contacts within the same asymmetric unit are listed below, sorted by their clash magnitude.

Atom-1	Atom-2	Interatomic distance (Å)	Clash overlap (Å)
1:A:947:ARG:HH11	1:A:947:ARG:HG3	1.40	0.86
1:A:429:LEU:HB2	1:A:468:LEU:HD21	1.63	0.79
1:A:629:GLN:HG2	1:A:1029:ILE:HG13	1.72	0.72
1:A:410:TRP:HB3	1:A:412:VAL:HG22	1.73	0.71
1:A:733:THR:HG22	1:A:737:GLN:HE21	1.58	0.69
1:A:176:THR:HG23	1:A:674:ASP:HB2	1.76	0.68
1:A:838:LEU:HD12	1:A:877:GLY:HA3	1.76	0.68
1:A:471:HIS:H	1:A:471:HIS:CD2	2.16	0.64
1:A:707:ARG:HD3	1:A:707:ARG:H	1.64	0.63
1:A:1067:TYR:O	1:A:1071:GLN:HG2	2.01	0.60
1:A:939:THR:HB	1:A:945:GLY:HA2	1.85	0.59
1:A:804:MET:HB2	1:A:810:PRO:HD2	1.85	0.59
1:A:947:ARG:HG3	1:A:947:ARG:NH1	2.12	0.58
1:A:422:ASP:HB3	1:A:599:GLY:O	2.05	0.56
1:A:424:PRO:HD2	1:A:427:ALA:HB2	1.87	0.55
1:A:1013:CYS:HB3	1:A:1068:PHE:CE2	2.41	0.55
1:A:629:GLN:CG	1:A:1029:ILE:HG13	2.37	0.55
1:A:640:VAL:O	1:A:643:ILE:HG12	2.07	0.54
1:A:611:LEU:O	1:A:614:ARG:HG2	2.09	0.52
1:A:795:ALA:HB3	1:A:816:LYS:HD2	1.90	0.52
1:A:576:TRP:CZ3	1:A:579:ARG:HD2	2.44	0.52
1:A:155:THR:HG23	1:A:161:ASP:HA	1.92	0.52
1:A:925:VAL:O	1:A:929:VAL:HG23	2.12	0.50
1:A:467:LEU:O	1:A:476:ARG:HD2	2.11	0.50
1:A:887:THR:HG22	1:A:953:MET:HG2	1.94	0.49
1:A:576:TRP:O	1:A:579:ARG:HB2	2.12	0.48
1:A:802:LYS:HG3	1:A:812:TRP:HB3	1.94	0.48
1:A:777:SER:HA	1:A:778:GLN:HA	1.67	0.47
1:A:364:LYS:HB3	1:A:519:LEU:HB3	1.96	0.47
1:A:395:CYS:HG	1:A:417:SER:HG	1.60	0.47
1:A:888:ILE:HD12	1:A:907:LEU:HD11	1.97	0.47
1:A:947:ARG:HE	1:A:948:HIS:HE1	1.63	0.47
1:A:1013:CYS:HB3	1:A:1068:PHE:HE2	1.79	0.46
1:A:983:VAL:CG2	1:A:984:PRO:HD2	2.45	0.46
1:A:271:VAL:CG1	1:A:272:LEU:N	2.79	0.46
1:A:622:LEU:HD13	1:A:647:LYS:HB3	1.97	0.45
1:A:731:ASP:O	1:A:735:GLN:HG3	2.16	0.44
1:A:549:ASN:O	1:A:553:LYS:HG2	2.17	0.44
1:A:935:TYR:CE1	1:A:961:PHE:HA	2.53	0.44
1:A:225:HIS:CE1	1:A:823:LEU:HD21	2.54	0.43
1:A:983:VAL:HG22	1:A:984:PRO:HD2	2.00	0.43
1:A:647:LYS:HD3	1:A:647:LYS:HA	1.81	0.43

Continued on next page...

Continued from previous page...

Atom-1	Atom-2	Interatomic distance (Å)	Clash overlap (Å)
1:A:281:LEU:HA	1:A:290:PHE:CE2	2.53	0.42
1:A:632:ASP:C	1:A:632:ASP:OD1	2.57	0.42
1:A:500:ASP:HB3	1:A:708:HIS:CD2	2.54	0.42
1:A:819:ASP:OD2	1:A:821:THR:OG1	2.36	0.42
1:A:760:SER:HB3	1:A:763:VAL:HG23	2.00	0.42
1:A:931:SER:HB3	1:A:960:LEU:HB3	2.01	0.42
1:A:184:ARG:O	1:A:188:VAL:HG23	2.20	0.42
1:A:564:LEU:HD11	1:A:1048:ILE:HG22	2.00	0.42
1:A:686:LEU:HD23	1:A:686:LEU:HA	1.81	0.42
1:A:1029:ILE:HD13	1:A:1029:ILE:HA	1.91	0.42
1:A:767:LEU:HD22	1:A:803:VAL:HG23	2.02	0.42
1:A:855:TRP:CD2	1:A:862:LEU:HD13	2.55	0.42
1:A:830:ILE:CG2	1:A:878:MET:HB2	2.50	0.41
1:A:625:GLY:O	1:A:629:GLN:HG3	2.21	0.41
1:A:359:ARG:HG3	4:A:1311:HOH:O	2.21	0.41
1:A:611:LEU:HD22	1:A:643:ILE:HG21	2.02	0.41
1:A:274:VAL:HG11	1:A:292:TRP:CE2	2.56	0.40
1:A:299:ASN:O	1:A:300:GLY:C	2.60	0.40
1:A:1008:LYS:O	1:A:1012:ILE:HG13	2.22	0.40
3:A:1204:0KO:N17	3:A:1204:0KO:N7	2.41	0.40

There are no symmetry-related clashes.

5.3 Torsion angles [i](#)

5.3.1 Protein backbone [i](#)

In the following table, the Percentiles column shows the percent Ramachandran outliers of the chain as a percentile score with respect to all X-ray entries followed by that with respect to entries of similar resolution.

The Analysed column shows the number of residues for which the backbone conformation was analysed, and the total number of residues.

Mol	Chain	Analysed	Favoured	Allowed	Outliers	Percentiles
1	A	814/959 (85%)	758 (93%)	52 (6%)	4 (0%)	29 64

All (4) Ramachandran outliers are listed below:

Mol	Chain	Res	Type
1	A	300	GLY

Continued on next page...

Continued from previous page...

Mol	Chain	Res	Type
1	A	226	ARG
1	A	899	THR
1	A	900	GLY

5.3.2 Protein sidechains [i](#)

In the following table, the Percentiles column shows the percent sidechain outliers of the chain as a percentile score with respect to all X-ray entries followed by that with respect to entries of similar resolution.

The Analysed column shows the number of residues for which the sidechain conformation was analysed, and the total number of residues.

Mol	Chain	Analysed	Rotameric	Outliers	Percentiles
1	A	751/857 (88%)	716 (95%)	35 (5%)	26 59

All (35) residues with a non-rotameric sidechain are listed below:

Mol	Chain	Res	Type
1	A	164	ASP
1	A	165	VAL
1	A	194	LYS
1	A	215	ILE
1	A	282	VAL
1	A	302	GLU
1	A	317	GLU
1	A	354	LEU
1	A	357	CYS
1	A	370	ILE
1	A	378	ASP
1	A	379	LEU
1	A	488	SER
1	A	498	ASN
1	A	591	LYS
1	A	613	ARG
1	A	662	GLN
1	A	705	GLN
1	A	707	ARG
1	A	711	GLN
1	A	776	ASN
1	A	781	GLU
1	A	799	GLU

Continued on next page...

Continued from previous page...

Mol	Chain	Res	Type
1	A	823	LEU
1	A	837	ASP
1	A	905	GLU
1	A	907	LEU
1	A	911	LEU
1	A	931	SER
1	A	948	HIS
1	A	959	ASN
1	A	967	HIS
1	A	981	GLU
1	A	1041	GLN
1	A	1086	TRP

Sometimes sidechains can be flipped to improve hydrogen bonding and reduce clashes. All (12) such sidechains are listed below:

Mol	Chain	Res	Type
1	A	388	GLN
1	A	389	HIS
1	A	471	HIS
1	A	498	ASN
1	A	550	GLN
1	A	554	GLN
1	A	619	GLN
1	A	662	GLN
1	A	734	GLN
1	A	737	GLN
1	A	773	ASN
1	A	893	GLN

5.3.3 RNA [i](#)

There are no RNA molecules in this entry.

5.4 Non-standard residues in protein, DNA, RNA chains [i](#)

There are no non-standard protein/DNA/RNA residues in this entry.

5.5 Carbohydrates [i](#)

There are no monosaccharides in this entry.

5.6 Ligand geometry

4 ligands are modelled in this entry.

In the following table, the Counts columns list the number of bonds (or angles) for which Mogul statistics could be retrieved, the number of bonds (or angles) that are observed in the model and the number of bonds (or angles) that are defined in the Chemical Component Dictionary. The Link column lists molecule types, if any, to which the group is linked. The Z score for a bond length (or angle) is the number of standard deviations the observed value is removed from the expected value. A bond length (or angle) with $|Z| > 2$ is considered an outlier worth inspection. RMSZ is the root-mean-square of all Z scores of the bond lengths (or angles).

Mol	Type	Chain	Res	Link	Bond lengths			Bond angles		
					Counts	RMSZ	# Z > 2	Counts	RMSZ	# Z > 2
2	SO4	A	1203	-	4,4,4	0.13	0	6,6,6	0.08	0
2	SO4	A	1202	-	4,4,4	0.17	0	6,6,6	0.14	0
2	SO4	A	1201	-	4,4,4	0.13	0	6,6,6	0.12	0
3	OKO	A	1204	-	37,37,37	1.59	4 (10%)	50,53,53	2.69	23 (46%)

In the following table, the Chirals column lists the number of chiral outliers, the number of chiral centers analysed, the number of these observed in the model and the number defined in the Chemical Component Dictionary. Similar counts are reported in the Torsion and Rings columns. '-' means no outliers of that kind were identified.

Mol	Type	Chain	Res	Link	Chirals	Torsions	Rings
3	OKO	A	1204	-	-	8/20/30/30	0/4/4/4

All (4) bond length outliers are listed below:

Mol	Chain	Res	Type	Atoms	Z	Observed(Å)	Ideal(Å)
3	A	1204	OKO	O34-S16	5.29	1.51	1.43
3	A	1204	OKO	O33-S16	4.66	1.50	1.43
3	A	1204	OKO	C3-C8	-3.77	1.39	1.48
3	A	1204	OKO	C24-N7	-3.18	1.33	1.40

All (23) bond angle outliers are listed below:

Mol	Chain	Res	Type	Atoms	Z	Observed(°)	Ideal(°)
3	A	1204	OKO	O33-S16-O34	-6.53	109.28	118.59
3	A	1204	OKO	C25-N26-C27	5.82	121.74	116.63
3	A	1204	OKO	C14-N13-S16	-5.78	109.20	116.30
3	A	1204	OKO	O34-S16-N13	5.38	111.55	107.03
3	A	1204	OKO	C12-N13-S16	-4.97	110.19	116.30
3	A	1204	OKO	C24-C25-N26	-3.96	120.57	124.13

Continued on next page...

Continued from previous page...

Mol	Chain	Res	Type	Atoms	Z	Observed(°)	Ideal(°)
3	A	1204	OKO	C20-N21-C8	3.94	120.43	114.35
3	A	1204	OKO	N17-C8-N21	-3.80	119.07	125.23
3	A	1204	OKO	C20-N19-C18	3.44	119.69	115.25
3	A	1204	OKO	N19-C20-N21	-3.41	120.07	125.42
3	A	1204	OKO	C4-C5-C6	3.32	119.92	116.71
3	A	1204	OKO	C6-N1-C2	3.19	122.45	116.05
3	A	1204	OKO	N19-C18-N17	-3.01	120.19	125.72
3	A	1204	OKO	C28-C27-N26	-2.97	120.43	124.87
3	A	1204	OKO	C5-C9-N10	-2.97	107.36	113.12
3	A	1204	OKO	C3-C8-N21	2.81	122.05	117.22
3	A	1204	OKO	C31-O30-C27	-2.81	112.95	117.36
3	A	1204	OKO	C5-C6-N1	-2.74	119.64	123.95
3	A	1204	OKO	C24-N7-C2	-2.30	123.61	129.39
3	A	1204	OKO	C22-C18-N19	2.26	120.67	117.15
3	A	1204	OKO	O33-S16-N13	2.25	108.92	107.03
3	A	1204	OKO	N23-C20-N21	2.03	120.41	117.25
3	A	1204	OKO	N7-C2-N1	2.03	120.80	118.40

There are no chirality outliers.

All (8) torsion outliers are listed below:

Mol	Chain	Res	Type	Atoms
3	A	1204	OKO	C14-N13-S16-C32
3	A	1204	OKO	C14-N13-S16-O34
3	A	1204	OKO	C14-N13-S16-O33
3	A	1204	OKO	C12-N13-S16-C32
3	A	1204	OKO	C12-N13-S16-O34
3	A	1204	OKO	C12-N13-S16-O33
3	A	1204	OKO	C5-C9-N10-C11
3	A	1204	OKO	C5-C9-N10-C15

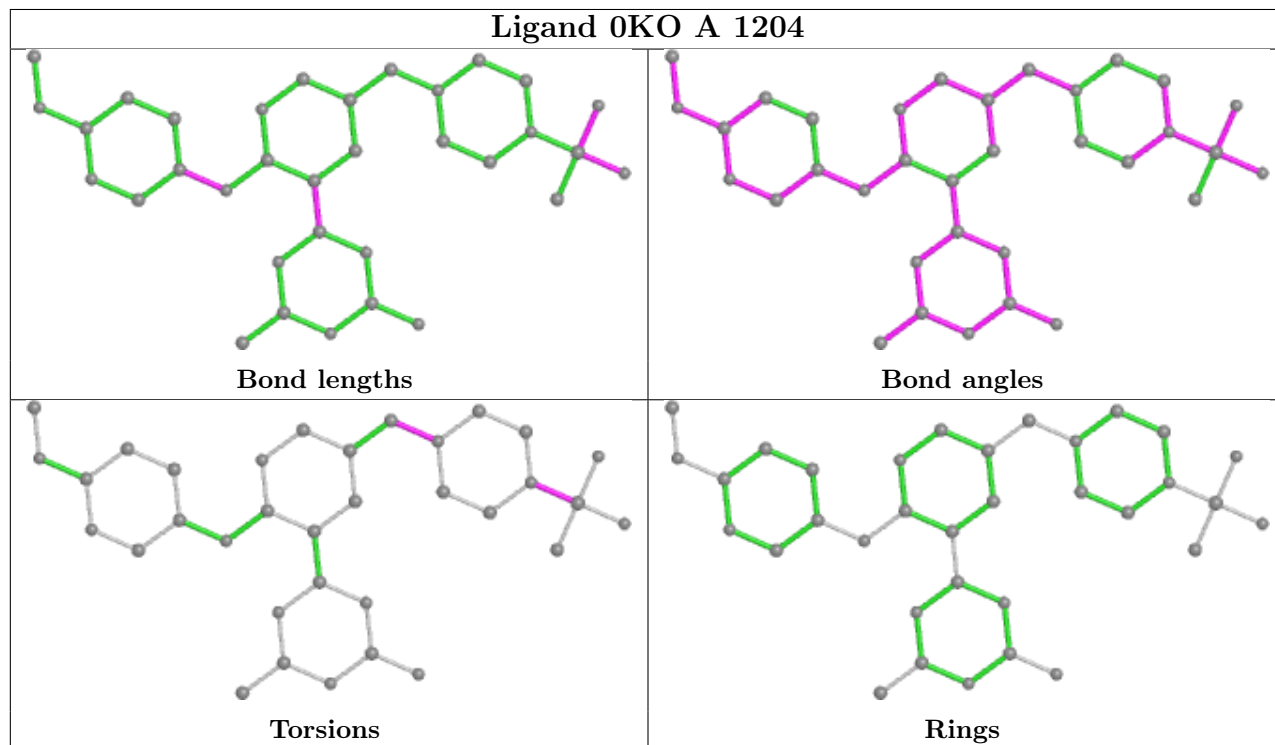
There are no ring outliers.

1 monomer is involved in 1 short contact:

Mol	Chain	Res	Type	Clashes	Symm-Clashes
3	A	1204	OKO	1	0

The following is a two-dimensional graphical depiction of Mogul quality analysis of bond lengths, bond angles, torsion angles, and ring geometry for all instances of the Ligand of Interest. In addition, ligands with molecular weight > 250 and outliers as shown on the validation Tables will also be included. For torsion angles, if less than 5% of the Mogul distribution of torsion angles is within 10 degrees of the torsion angle in question, then that torsion angle is considered an outlier.

Any bond that is central to one or more torsion angles identified as an outlier by Mogul will be highlighted in the graph. For rings, the root-mean-square deviation (RMSD) between the ring in question and similar rings identified by Mogul is calculated over all ring torsion angles. If the average RMSD is greater than 60 degrees and the minimal RMSD between the ring in question and any Mogul-identified rings is also greater than 60 degrees, then that ring is considered an outlier. The outliers are highlighted in purple. The color gray indicates Mogul did not find sufficient equivalents in the CSD to analyse the geometry.



5.7 Other polymers [i](#)

There are no such residues in this entry.

5.8 Polymer linkage issues [i](#)

There are no chain breaks in this entry.

6 Fit of model and data

6.1 Protein, DNA and RNA chains

In the following table, the column labelled ‘#RSRZ > 2’ contains the number (and percentage) of RSRZ outliers, followed by percent RSRZ outliers for the chain as percentile scores relative to all X-ray entries and entries of similar resolution. The OWAB column contains the minimum, median, 95th percentile and maximum values of the occupancy-weighted average B-factor per residue. The column labelled ‘Q < 0.9’ lists the number of (and percentage) of residues with an average occupancy less than 0.9.

Mol	Chain	Analysed	<RSRZ>	#RSRZ>2	OWAB(Å ²)	Q<0.9
1	A	834/959 (86%)	0.46	54 (6%) 18 11	45, 83, 130, 164	0

All (54) RSRZ outliers are listed below:

Mol	Chain	Res	Type	RSRZ
1	A	995	MET	6.1
1	A	1082	VAL	5.1
1	A	1086	TRP	4.8
1	A	998	SER	4.7
1	A	404	PHE	4.5
1	A	307	LEU	4.4
1	A	270	PHE	4.1
1	A	987	LEU	3.6
1	A	1042	LEU	3.6
1	A	320	LYS	3.5
1	A	321	GLU	3.5
1	A	352	VAL	3.5
1	A	248	PHE	3.4
1	A	983	VAL	3.4
1	A	530	PRO	3.3
1	A	488	SER	3.2
1	A	991	PHE	3.2
1	A	1041	GLN	3.1
1	A	373	LEU	3.0
1	A	823	LEU	3.0
1	A	982	ARG	3.0
1	A	996	GLY	2.9
1	A	496	SER	2.9
1	A	929	VAL	2.8
1	A	980	LYS	2.8
1	A	899	THR	2.8
1	A	216	ALA	2.8

Continued on next page...

Continued from previous page...

Mol	Chain	Res	Type	RSRZ
1	A	271	VAL	2.8
1	A	901	ALA	2.7
1	A	898	ASN	2.7
1	A	235	VAL	2.7
1	A	1084	PHE	2.6
1	A	232	THR	2.5
1	A	145	GLU	2.5
1	A	1075	CYS	2.5
1	A	144	SER	2.5
1	A	911	LEU	2.5
1	A	220	ILE	2.4
1	A	1085	ASN	2.4
1	A	231	GLN	2.4
1	A	1080	TRP	2.3
1	A	217	ASN	2.3
1	A	902	PHE	2.3
1	A	1043	THR	2.3
1	A	213	LYS	2.3
1	A	283	GLY	2.2
1	A	1083	GLN	2.2
1	A	581	GLU	2.1
1	A	1064	ALA	2.1
1	A	749	ILE	2.1
1	A	774	LEU	2.1
1	A	529	LEU	2.0
1	A	372	VAL	2.0
1	A	378	ASP	2.0

6.2 Non-standard residues in protein, DNA, RNA chains [i](#)

There are no non-standard protein/DNA/RNA residues in this entry.

6.3 Carbohydrates [i](#)

There are no monosaccharides in this entry.

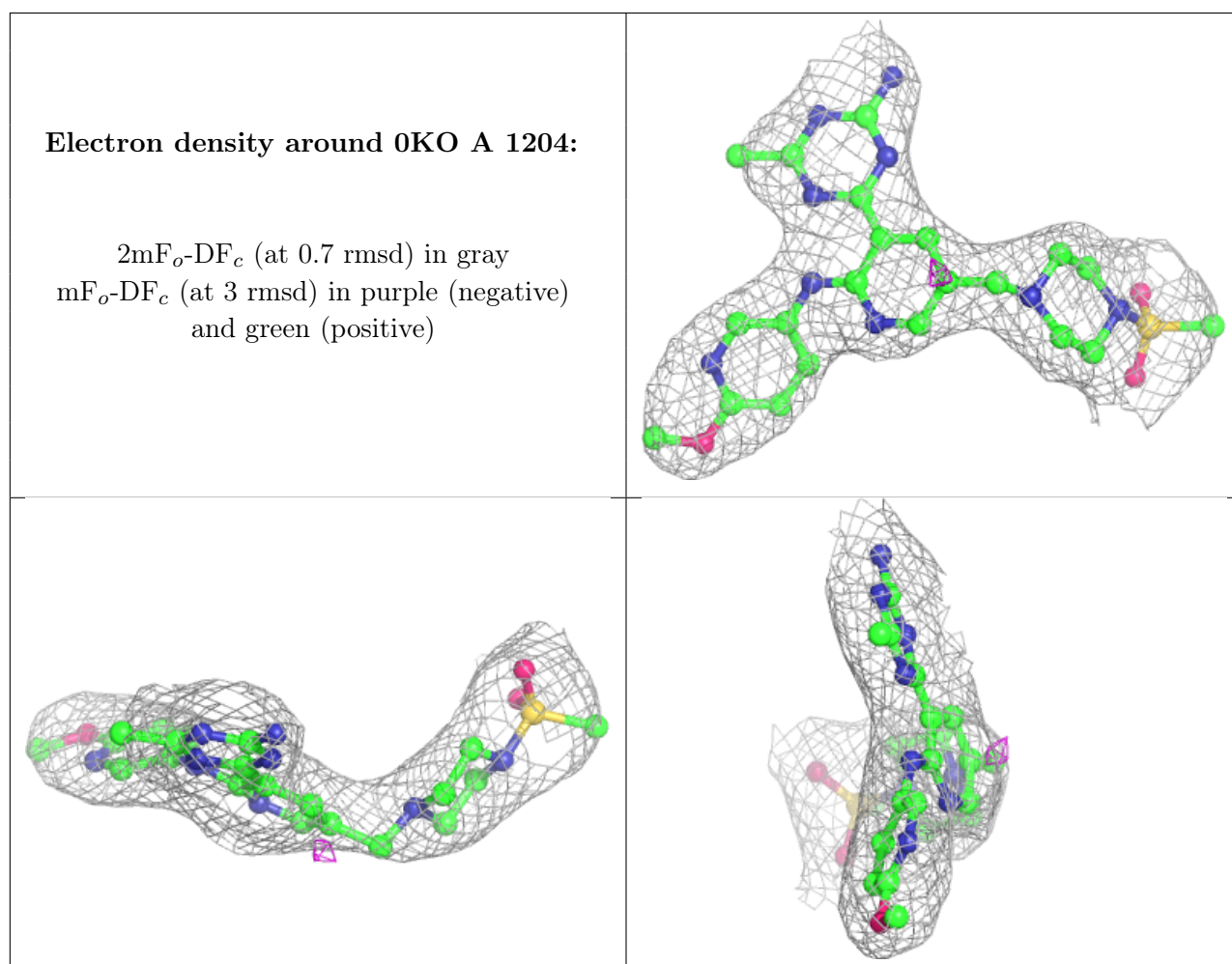
6.4 Ligands [i](#)

In the following table, the Atoms column lists the number of modelled atoms in the group and the number defined in the chemical component dictionary. The B-factors column lists the minimum,

median, 95th percentile and maximum values of B factors of atoms in the group. The column labelled 'Q< 0.9' lists the number of atoms with occupancy less than 0.9.

Mol	Type	Chain	Res	Atoms	RSCC	RSR	B-factors(Å ²)	Q<0.9
2	SO4	A	1203	5/5	0.84	0.22	136,136,137,137	0
2	SO4	A	1201	5/5	0.86	0.20	127,127,128,128	0
2	SO4	A	1202	5/5	0.90	0.22	83,84,84,84	0
3	OKO	A	1204	34/34	0.97	0.17	60,62,70,70	0

The following is a graphical depiction of the model fit to experimental electron density of all instances of the Ligand of Interest. In addition, ligands with molecular weight > 250 and outliers as shown on the geometry validation Tables will also be included. Each fit is shown from different orientation to approximate a three-dimensional view.



6.5 Other polymers [\(i\)](#)

There are no such residues in this entry.