



Full wwPDB X-ray Structure Validation Report ⓘ

Jun 19, 2024 – 03:06 PM EDT

PDB ID : 4D0W
Title : Pyrrole-3-carboxamides as potent and selective JAK2 inhibitors
Authors : Bertrand, J.; Canevari, G.; Fasolini, M.; Brasca, M.G.; Nesi, M.; Avanzi, N.; Ballinari, D.; Bandiera, T.; Bindi, S.; Carezzi, D.; Casero, D.; Ceriani, L.; Ciomei, M.; Cirila, A.; Colombo, M.; Cribioli, S.; Cristiani, C.; Della Vedova, F.; Fachin, G.; Felder, E.R.; Galvani, A.; Isacchi, A.; Mirizzi, D.; Motto, I.; Panzeri, A.; Pesenti, E.; Vianello, P.; Gnocchi, P.; Donati, D.
Deposited on : 2014-04-30
Resolution : 1.77 Å(reported)

This is a Full wwPDB X-ray Structure Validation Report for a publicly released PDB entry.

We welcome your comments at validation@mail.wwpdb.org

A user guide is available at

<https://www.wwpdb.org/validation/2017/XrayValidationReportHelp>

with specific help available everywhere you see the ⓘ symbol.

The types of validation reports are described at

<http://www.wwpdb.org/validation/2017/FAQs#types>.

The following versions of software and data (see [references ⓘ](#)) were used in the production of this report:

MolProbity : 4.02b-467
Mogul : 2022.3.0, CSD as543be (2022)
Xtriage (Phenix) : 1.20.1
EDS : 2.37.1
buster-report : 1.1.7 (2018)
Percentile statistics : 20191225.v01 (using entries in the PDB archive December 25th 2019)
Refmac : 5.8.0158
CCP4 : 7.0.044 (Gargrove)
Ideal geometry (proteins) : Engh & Huber (2001)

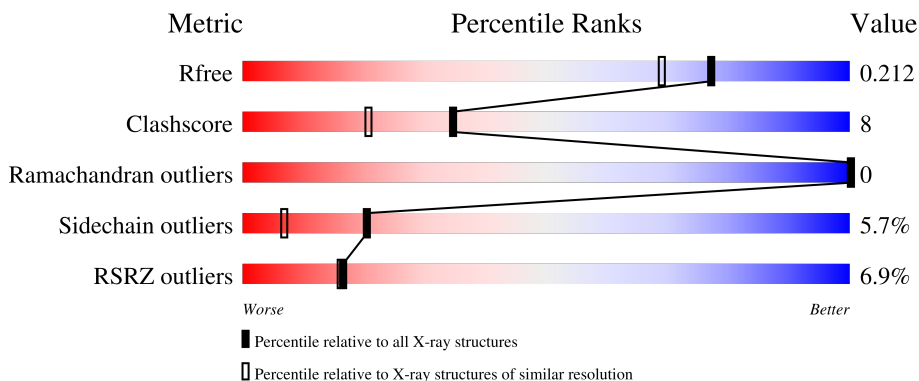
1 Overall quality at a glance

The following experimental techniques were used to determine the structure:

X-RAY DIFFRACTION

The reported resolution of this entry is 1.77 Å.

Percentile scores (ranging between 0-100) for global validation metrics of the entry are shown in the following graphic. The table shows the number of entries on which the scores are based.



Metric	Whole archive (#Entries)	Similar resolution (#Entries, resolution range(Å))
R_{free}	130704	9185 (1.80-1.76)
Clashscore	141614	10184 (1.80-1.76)
Ramachandran outliers	138981	10051 (1.80-1.76)
Sidechain outliers	138945	10050 (1.80-1.76)
RSRZ outliers	127900	9032 (1.80-1.76)

The table below summarises the geometric issues observed across the polymeric chains and their fit to the electron density. The red, orange, yellow and green segments of the lower bar indicate the fraction of residues that contain outliers for ≥ 3 , 2, 1 and 0 types of geometric quality criteria respectively. A grey segment represents the fraction of residues that are not modelled. The numeric value for each fraction is indicated below the corresponding segment, with a dot representing fractions $\leq 5\%$. The upper red bar (where present) indicates the fraction of residues that have poor fit to the electron density. The numeric value is given above the bar.

Mol	Chain	Length	Quality of chain
1	A	298	

Ideal geometry (DNA, RNA) : Parkinson et al. (1996)
Validation Pipeline (wwPDB-VP) : 2.37.1

2 Entry composition [i](#)

There are 4 unique types of molecules in this entry. The entry contains 2627 atoms, of which 0 are hydrogens and 0 are deuteriums.

In the tables below, the ZeroOcc column contains the number of atoms modelled with zero occupancy, the AltConf column contains the number of residues with at least one atom in alternate conformation and the Trace column contains the number of residues modelled with at most 2 atoms.

- Molecule 1 is a protein called TYROSINE-PROTEIN KINASE JAK2.

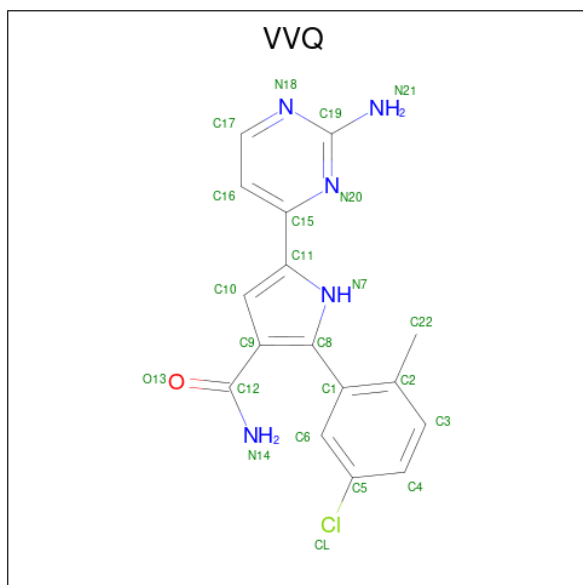
Mol	Chain	Residues	Atoms					ZeroOcc	AltConf	Trace	
			Total	C	N	O	P				S
1	A	291	2442	1548	424	452	2	16	0	5	0

- Molecule 2 is GLYCEROL (three-letter code: GOL) (formula: C₃H₈O₃).



Mol	Chain	Residues	Atoms		ZeroOcc	AltConf
			Total	C O		
2	A	1	6	3 3	0	0

- Molecule 3 is 5-(2-aminopyrimidin-4-yl)-2-(5-chloro-2-methylphenyl)-1H-pyrrole-3-carboxamide (three-letter code: VVQ) (formula: C₁₆H₁₄ClN₅O).



Mol	Chain	Residues	Atoms					ZeroOcc	AltConf
			Total	C	Cl	N	O		
3	A	1	23	16	1	5	1	0	0

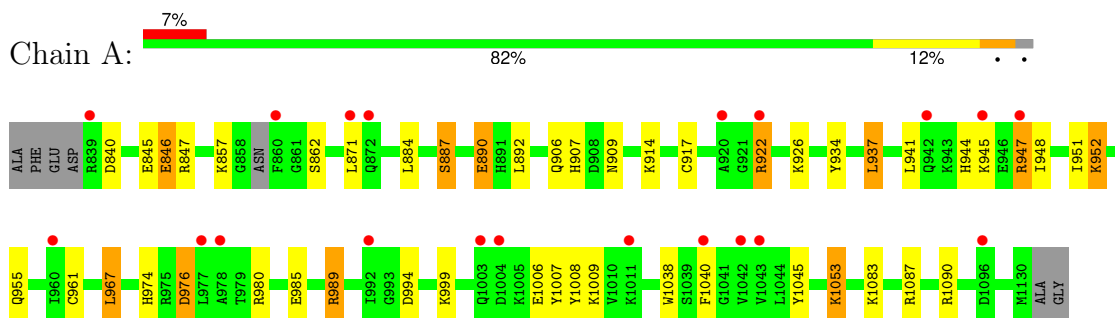
- Molecule 4 is water.

Mol	Chain	Residues	Atoms		ZeroOcc	AltConf
4	A	156	Total	O	0	0
			156	156		

3 Residue-property plots [i](#)

These plots are drawn for all protein, RNA, DNA and oligosaccharide chains in the entry. The first graphic for a chain summarises the proportions of the various outlier classes displayed in the second graphic. The second graphic shows the sequence view annotated by issues in geometry and electron density. Residues are color-coded according to the number of geometric quality criteria for which they contain at least one outlier: green = 0, yellow = 1, orange = 2 and red = 3 or more. A red dot above a residue indicates a poor fit to the electron density ($RSRZ > 2$). Stretches of 2 or more consecutive residues without any outlier are shown as a green connector. Residues present in the sample, but not in the model, are shown in grey.

- Molecule 1: TYROSINE-PROTEIN KINASE JAK2



4 Data and refinement statistics

Property	Value	Source
Space group	C 2 2 21	Depositor
Cell constants a, b, c, α , β , γ	93.25Å 102.10Å 68.23Å 90.00° 90.00° 90.00°	Depositor
Resolution (Å)	29.74 – 1.77 29.73 – 1.77	Depositor EDS
% Data completeness (in resolution range)	95.3 (29.74-1.77) 95.3 (29.73-1.77)	Depositor EDS
R_{merge}	0.06	Depositor
R_{sym}	(Not available)	Depositor
$\langle I/\sigma(I) \rangle$ ¹	1.78 (at 1.77Å)	Xtrriage
Refinement program	REFMAC 5.6.0117	Depositor
R, R_{free}	0.173 , 0.215 0.172 , 0.212	Depositor DCC
R_{free} test set	1532 reflections (5.01%)	wwPDB-VP
Wilson B-factor (Å ²)	22.3	Xtrriage
Anisotropy	0.363	Xtrriage
Bulk solvent k_{sol} (e/Å ³), B_{sol} (Å ²)	0.40 , 46.4	EDS
L-test for twinning ²	$\langle L \rangle = 0.50$, $\langle L^2 \rangle = 0.33$	Xtrriage
Estimated twinning fraction	No twinning to report.	Xtrriage
F_o, F_c correlation	0.96	EDS
Total number of atoms	2627	wwPDB-VP
Average B, all atoms (Å ²)	27.0	wwPDB-VP

Xtrriage's analysis on translational NCS is as follows: *The largest off-origin peak in the Patterson function is 5.90% of the height of the origin peak. No significant pseudotranslation is detected.*

¹Intensities estimated from amplitudes.

²Theoretical values of $\langle |L| \rangle$, $\langle L^2 \rangle$ for acentric reflections are 0.5, 0.333 respectively for untwinned datasets, and 0.375, 0.2 for perfectly twinned datasets.

5 Model quality [i](#)

5.1 Standard geometry [i](#)

Bond lengths and bond angles in the following residue types are not validated in this section: VVQ, GOL, PTR

The Z score for a bond length (or angle) is the number of standard deviations the observed value is removed from the expected value. A bond length (or angle) with $|Z| > 5$ is considered an outlier worth inspection. RMSZ is the root-mean-square of all Z scores of the bond lengths (or angles).

Mol	Chain	Bond lengths		Bond angles	
		RMSZ	# $ Z > 5$	RMSZ	# $ Z > 5$
1	A	1.13	3/2474 (0.1%)	1.07	8/3325 (0.2%)

All (3) bond length outliers are listed below:

Mol	Chain	Res	Type	Atoms	Z	Observed(Å)	Ideal(Å)
1	A	862	SER	CB-OG	-5.78	1.34	1.42
1	A	1038	TRP	CD2-CE2	5.30	1.47	1.41
1	A	1045	TYR	CG-CD1	5.04	1.45	1.39

All (8) bond angle outliers are listed below:

Mol	Chain	Res	Type	Atoms	Z	Observed(°)	Ideal(°)
1	A	840	ASP	CB-CG-OD1	8.28	125.75	118.30
1	A	976	ASP	CB-CG-OD1	7.11	124.70	118.30
1	A	967	LEU	CA-CB-CG	6.51	130.28	115.30
1	A	937	LEU	CB-CG-CD2	5.76	120.79	111.00
1	A	1006	GLU	OE1-CD-OE2	-5.57	116.61	123.30
1	A	1087	ARG	NE-CZ-NH1	5.52	123.06	120.30
1	A	1090	ARG	NE-CZ-NH2	-5.41	117.59	120.30
1	A	840	ASP	CB-CG-OD2	-5.32	113.51	118.30

There are no chirality outliers.

There are no planarity outliers.

5.2 Too-close contacts [i](#)

In the following table, the Non-H and H(model) columns list the number of non-hydrogen atoms and hydrogen atoms in the chain respectively. The H(added) column lists the number of hydrogen atoms added and optimized by MolProbity. The Clashes column lists the number of clashes within

the asymmetric unit, whereas Symm-Clashes lists symmetry-related clashes.

Mol	Chain	Non-H	H(model)	H(added)	Clashes	Symm-Clashes
1	A	2442	0	2428	41	0
2	A	6	0	8	0	0
3	A	23	0	14	0	0
4	A	156	0	0	4	0
All	All	2627	0	2450	41	0

The all-atom clashscore is defined as the number of clashes found per 1000 atoms (including hydrogen atoms). The all-atom clashscore for this structure is 8.

All (41) close contacts within the same asymmetric unit are listed below, sorted by their clash magnitude.

Atom-1	Atom-2	Interatomic distance (Å)	Clash overlap (Å)
1:A:1053:LYS:H	1:A:1053:LYS:CD	1.86	0.87
1:A:944:HIS:O	1:A:947:ARG:HG3	1.78	0.83
1:A:887:SER:HB2	1:A:892:LEU:HD11	1.62	0.81
1:A:952:LYS:HZ2	1:A:955:GLN:HE22	1.32	0.77
1:A:846:GLU:HB2	1:A:917[A]:CYS:SG	2.30	0.71
1:A:974:HIS:HD2	1:A:976:ASP:H	1.41	0.69
1:A:1083:LYS:HG3	4:A:3133:HOH:O	1.93	0.68
1:A:914:LYS:HE2	4:A:3025:HOH:O	1.94	0.66
1:A:952:LYS:NZ	1:A:955:GLN:HE22	1.96	0.64
1:A:887:SER:CB	1:A:892:LEU:HD11	2.28	0.63
1:A:884:LEU:HD12	1:A:892:LEU:HD12	1.80	0.62
1:A:922:ARG:NH1	1:A:922:ARG:HG2	2.14	0.62
1:A:922:ARG:HG2	1:A:922:ARG:HH11	1.63	0.62
1:A:1053:LYS:H	1:A:1053:LYS:HD3	1.65	0.61
1:A:999:LYS:HE2	4:A:3093:HOH:O	2.02	0.60
1:A:917[B]:CYS:HB2	1:A:926:LYS:HB2	1.84	0.59
1:A:989:ARG:HG2	1:A:989:ARG:HH11	1.70	0.57
1:A:846:GLU:HG3	1:A:846:GLU:O	2.04	0.56
1:A:845:GLU:HG3	1:A:847:ARG:HG2	1.88	0.55
1:A:941:LEU:HD12	1:A:948:ILE:HD12	1.88	0.54
1:A:1053:LYS:CD	1:A:1053:LYS:N	2.67	0.54
1:A:941:LEU:CD1	1:A:948:ILE:HD12	2.37	0.53
1:A:922:ARG:HH11	1:A:922:ARG:CG	2.23	0.52
1:A:1053:LYS:H	1:A:1053:LYS:HD2	1.73	0.52
1:A:944:HIS:O	1:A:947:ARG:CG	2.56	0.52
1:A:934:TYR:HD1	1:A:934:TYR:N	2.09	0.51
1:A:976:ASP:OD1	1:A:980:ARG:NH2	2.45	0.50
1:A:845:GLU:CG	1:A:847:ARG:HG2	2.42	0.49

Continued on next page...

Continued from previous page...

Atom-1	Atom-2	Interatomic distance (Å)	Clash overlap (Å)
1:A:974:HIS:CD2	1:A:976:ASP:H	2.25	0.49
1:A:934:TYR:N	1:A:934:TYR:CD1	2.81	0.47
1:A:961[A]:CYS:SG	1:A:1040:PHE:CZ	3.07	0.47
1:A:989:ARG:HG2	1:A:989:ARG:NH1	2.30	0.47
1:A:917[A]:CYS:HB3	1:A:926:LYS:HB2	1.97	0.46
1:A:952:LYS:HZ2	1:A:955:GLN:NE2	2.06	0.46
1:A:907:HIS:HE1	1:A:909:ASN:HD22	1.62	0.45
1:A:1009:LYS:HE3	1:A:1009:LYS:HB2	1.52	0.45
1:A:985:GLU:OE1	1:A:989:ARG:NH1	2.49	0.45
1:A:890[A]:GLU:H	1:A:890[A]:GLU:HG2	1.54	0.43
1:A:952:LYS:NZ	1:A:955:GLN:NE2	2.64	0.42
1:A:914:LYS:CE	4:A:3025:HOH:O	2.58	0.42
1:A:974:HIS:HE1	1:A:994:ASP:O	2.03	0.41

There are no symmetry-related clashes.

5.3 Torsion angles [i](#)

5.3.1 Protein backbone [i](#)

In the following table, the Percentiles column shows the percent Ramachandran outliers of the chain as a percentile score with respect to all X-ray entries followed by that with respect to entries of similar resolution.

The Analysed column shows the number of residues for which the backbone conformation was analysed, and the total number of residues.

Mol	Chain	Analysed	Favoured	Allowed	Outliers	Percentiles
1	A	290/298 (97%)	284 (98%)	6 (2%)	0	100 100

There are no Ramachandran outliers to report.

5.3.2 Protein sidechains [i](#)

In the following table, the Percentiles column shows the percent sidechain outliers of the chain as a percentile score with respect to all X-ray entries followed by that with respect to entries of similar resolution.

The Analysed column shows the number of residues for which the sidechain conformation was analysed, and the total number of residues.

Mol	Chain	Analysed	Rotameric	Outliers	Percentiles
1	A	270/269 (100%)	254 (94%)	16 (6%)	19 6

All (16) residues with a non-rotameric sidechain are listed below:

Mol	Chain	Res	Type
1	A	846	GLU
1	A	857	LYS
1	A	871	LEU
1	A	887	SER
1	A	890[A]	GLU
1	A	890[B]	GLU
1	A	906	GLN
1	A	922	ARG
1	A	937	LEU
1	A	945	LYS
1	A	947	ARG
1	A	951	ILE
1	A	952	LYS
1	A	967	LEU
1	A	989	ARG
1	A	1053	LYS

Sometimes sidechains can be flipped to improve hydrogen bonding and reduce clashes. All (6) such sidechains are listed below:

Mol	Chain	Res	Type
1	A	848	HIS
1	A	853	GLN
1	A	885	GLN
1	A	909	ASN
1	A	955	GLN
1	A	974	HIS

5.3.3 RNA ⓘ

There are no RNA molecules in this entry.

5.4 Non-standard residues in protein, DNA, RNA chains ⓘ

2 non-standard protein/DNA/RNA residues are modelled in this entry.

In the following table, the Counts columns list the number of bonds (or angles) for which Mogul

statistics could be retrieved, the number of bonds (or angles) that are observed in the model and the number of bonds (or angles) that are defined in the Chemical Component Dictionary. The Link column lists molecule types, if any, to which the group is linked. The Z score for a bond length (or angle) is the number of standard deviations the observed value is removed from the expected value. A bond length (or angle) with $|Z| > 2$ is considered an outlier worth inspection. RMSZ is the root-mean-square of all Z scores of the bond lengths (or angles).

Mol	Type	Chain	Res	Link	Bond lengths			Bond angles		
					Counts	RMSZ	# Z > 2	Counts	RMSZ	# Z > 2
1	PTR	A	1007	1	15,16,17	0.96	0	17,22,24	1.82	5 (29%)
1	PTR	A	1008	1	15,16,17	1.08	1 (6%)	17,22,24	1.62	6 (35%)

In the following table, the Chirals column lists the number of chiral outliers, the number of chiral centers analysed, the number of these observed in the model and the number defined in the Chemical Component Dictionary. Similar counts are reported in the Torsion and Rings columns. '-' means no outliers of that kind were identified.

Mol	Type	Chain	Res	Link	Chirals	Torsions	Rings
1	PTR	A	1007	1	-	0/10/11/13	0/1/1/1
1	PTR	A	1008	1	-	0/10/11/13	0/1/1/1

All (1) bond length outliers are listed below:

Mol	Chain	Res	Type	Atoms	Z	Observed(Å)	Ideal(Å)
1	A	1008	PTR	CD1-CG	2.32	1.43	1.38

All (11) bond angle outliers are listed below:

Mol	Chain	Res	Type	Atoms	Z	Observed(°)	Ideal(°)
1	A	1007	PTR	OH-P-O1P	-4.20	95.47	109.48
1	A	1007	PTR	CD2-CG-CD1	3.02	122.72	118.23
1	A	1008	PTR	OH-CZ-CE2	-2.62	111.36	119.22
1	A	1007	PTR	CE1-CD1-CG	-2.44	117.78	121.00
1	A	1008	PTR	O3P-P-O2P	2.35	116.60	107.80
1	A	1007	PTR	O3P-P-O2P	2.31	116.48	107.80
1	A	1008	PTR	CD2-CG-CD1	2.30	121.66	118.23
1	A	1008	PTR	CD1-CE1-CZ	-2.22	117.19	119.73
1	A	1007	PTR	CD2-CE2-CZ	-2.18	117.23	119.73
1	A	1008	PTR	CE2-CZ-CE1	2.09	123.21	120.16
1	A	1008	PTR	OH-CZ-CE1	2.07	125.42	119.22

There are no chirality outliers.

There are no torsion outliers.

There are no ring outliers.

No monomer is involved in short contacts.

5.5 Carbohydrates [i](#)

There are no monosaccharides in this entry.

5.6 Ligand geometry [i](#)

2 ligands are modelled in this entry.

In the following table, the Counts columns list the number of bonds (or angles) for which Mogul statistics could be retrieved, the number of bonds (or angles) that are observed in the model and the number of bonds (or angles) that are defined in the Chemical Component Dictionary. The Link column lists molecule types, if any, to which the group is linked. The Z score for a bond length (or angle) is the number of standard deviations the observed value is removed from the expected value. A bond length (or angle) with $|Z| > 2$ is considered an outlier worth inspection. RMSZ is the root-mean-square of all Z scores of the bond lengths (or angles).

Mol	Type	Chain	Res	Link	Bond lengths			Bond angles		
					Counts	RMSZ	# Z > 2	Counts	RMSZ	# Z > 2
2	GOL	A	2131	-	5,5,5	0.64	0	5,5,5	0.95	0
3	VVQ	A	2132	-	25,25,25	3.20	7 (28%)	28,36,36	3.56	17 (60%)

In the following table, the Chirals column lists the number of chiral outliers, the number of chiral centers analysed, the number of these observed in the model and the number defined in the Chemical Component Dictionary. Similar counts are reported in the Torsion and Rings columns. '-' means no outliers of that kind were identified.

Mol	Type	Chain	Res	Link	Chirals	Torsions	Rings
2	GOL	A	2131	-	-	2/4/4/4	-
3	VVQ	A	2132	-	-	2/6/12/12	0/3/3/3

All (7) bond length outliers are listed below:

Mol	Chain	Res	Type	Atoms	Z	Observed(Å)	Ideal(Å)
3	A	2132	VVQ	C1-C8	-11.42	1.37	1.49
3	A	2132	VVQ	C11-C15	-5.65	1.36	1.49
3	A	2132	VVQ	C22-C2	-5.37	1.41	1.51
3	A	2132	VVQ	C19-N18	4.09	1.41	1.35
3	A	2132	VVQ	C9-C12	-3.86	1.44	1.50
3	A	2132	VVQ	C15-N20	3.75	1.40	1.34
3	A	2132	VVQ	C5-CL	2.37	1.80	1.74

All (17) bond angle outliers are listed below:

Mol	Chain	Res	Type	Atoms	Z	Observed(°)	Ideal(°)
3	A	2132	VVQ	C15-N20-C19	8.02	121.10	116.35
3	A	2132	VVQ	O13-C12-N14	-6.84	112.73	122.62
3	A	2132	VVQ	C3-C4-C5	-6.71	112.49	119.24
3	A	2132	VVQ	N18-C19-N20	-5.14	119.98	125.70
3	A	2132	VVQ	O13-C12-C9	4.78	125.88	120.24
3	A	2132	VVQ	C6-C1-C2	-4.45	112.82	119.04
3	A	2132	VVQ	C4-C5-CL	-4.03	113.41	119.36
3	A	2132	VVQ	C17-N18-C19	3.92	120.12	116.21
3	A	2132	VVQ	C17-C16-C15	3.48	120.56	117.20
3	A	2132	VVQ	C3-C2-C1	3.36	122.93	118.38
3	A	2132	VVQ	C16-C15-N20	-3.11	117.87	121.97
3	A	2132	VVQ	C22-C2-C3	-3.09	114.33	120.28
3	A	2132	VVQ	C16-C17-N18	-3.07	120.21	123.97
3	A	2132	VVQ	C4-C5-C6	2.94	125.38	121.53
3	A	2132	VVQ	N21-C19-N20	2.59	121.11	117.22
3	A	2132	VVQ	C6-C1-C8	2.49	122.92	119.16
3	A	2132	VVQ	C1-C6-C5	2.31	122.65	118.98

There are no chirality outliers.

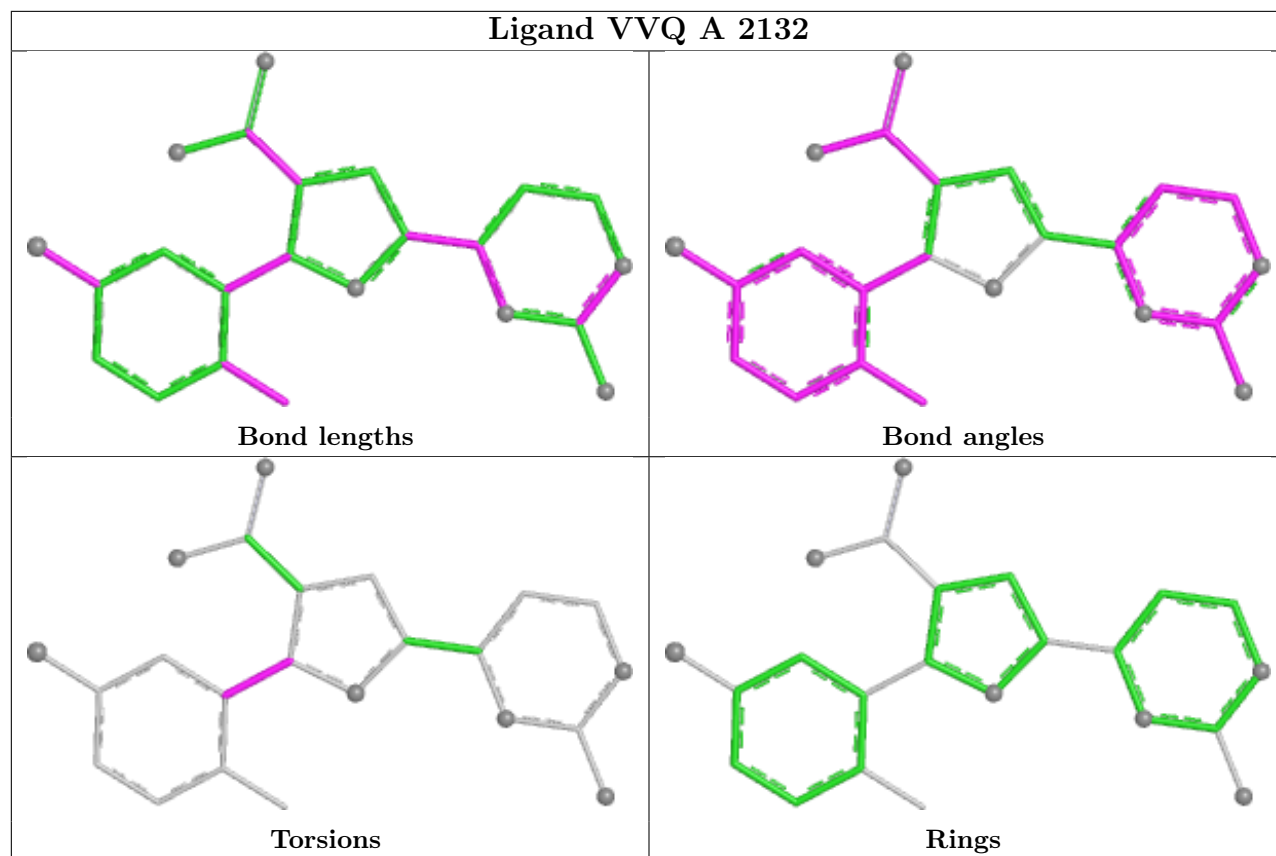
All (4) torsion outliers are listed below:

Mol	Chain	Res	Type	Atoms
2	A	2131	GOL	C1-C2-C3-O3
3	A	2132	VVQ	C6-C1-C8-N7
2	A	2131	GOL	O2-C2-C3-O3
3	A	2132	VVQ	C6-C1-C8-C9

There are no ring outliers.

No monomer is involved in short contacts.

The following is a two-dimensional graphical depiction of Mogul quality analysis of bond lengths, bond angles, torsion angles, and ring geometry for all instances of the Ligand of Interest. In addition, ligands with molecular weight > 250 and outliers as shown on the validation Tables will also be included. For torsion angles, if less than 5% of the Mogul distribution of torsion angles is within 10 degrees of the torsion angle in question, then that torsion angle is considered an outlier. Any bond that is central to one or more torsion angles identified as an outlier by Mogul will be highlighted in the graph. For rings, the root-mean-square deviation (RMSD) between the ring in question and similar rings identified by Mogul is calculated over all ring torsion angles. If the average RMSD is greater than 60 degrees and the minimal RMSD between the ring in question and any Mogul-identified rings is also greater than 60 degrees, then that ring is considered an outlier. The outliers are highlighted in purple. The color gray indicates Mogul did not find sufficient equivalents in the CSD to analyse the geometry.



5.7 Other polymers [\(i\)](#)

There are no such residues in this entry.

5.8 Polymer linkage issues [\(i\)](#)

There are no chain breaks in this entry.

6 Fit of model and data [i](#)

6.1 Protein, DNA and RNA chains [i](#)

In the following table, the column labelled ‘#RSRZ> 2’ contains the number (and percentage) of RSRZ outliers, followed by percent RSRZ outliers for the chain as percentile scores relative to all X-ray entries and entries of similar resolution. The OWAB column contains the minimum, median, 95th percentile and maximum values of the occupancy-weighted average B-factor per residue. The column labelled ‘Q< 0.9’ lists the number of (and percentage) of residues with an average occupancy less than 0.9.

Mol	Chain	Analysed	<RSRZ>	#RSRZ>2	OWAB(Å ²)	Q<0.9
1	A	289/298 (96%)	0.22	20 (6%) 16 16	14, 24, 46, 77	0

All (20) RSRZ outliers are listed below:

Mol	Chain	Res	Type	RSRZ
1	A	860	PHE	5.2
1	A	920	ALA	4.5
1	A	839	ARG	3.7
1	A	977	LEU	3.6
1	A	1011	LYS	3.1
1	A	1042	VAL	3.1
1	A	1003	GLN	2.8
1	A	947	ARG	2.6
1	A	978	ALA	2.6
1	A	1004	ASP	2.6
1	A	960	ILE	2.6
1	A	872	GLN	2.6
1	A	922	ARG	2.5
1	A	992	ILE	2.5
1	A	871	LEU	2.5
1	A	1043	VAL	2.4
1	A	942	GLN	2.3
1	A	945	LYS	2.3
1	A	1040	PHE	2.2
1	A	1096	ASP	2.0

6.2 Non-standard residues in protein, DNA, RNA chains [i](#)

In the following table, the Atoms column lists the number of modelled atoms in the group and the number defined in the chemical component dictionary. The B-factors column lists the minimum, median, 95th percentile and maximum values of B factors of atoms in the group. The column

labelled 'Q< 0.9' lists the number of atoms with occupancy less than 0.9.

Mol	Type	Chain	Res	Atoms	RSCC	RSR	B-factors(\AA^2)	Q<0.9
1	PTR	A	1007	16/17	0.92	0.12	22,29,60,68	0
1	PTR	A	1008	16/17	0.94	0.12	19,28,60,62	0

6.3 Carbohydrates [i](#)

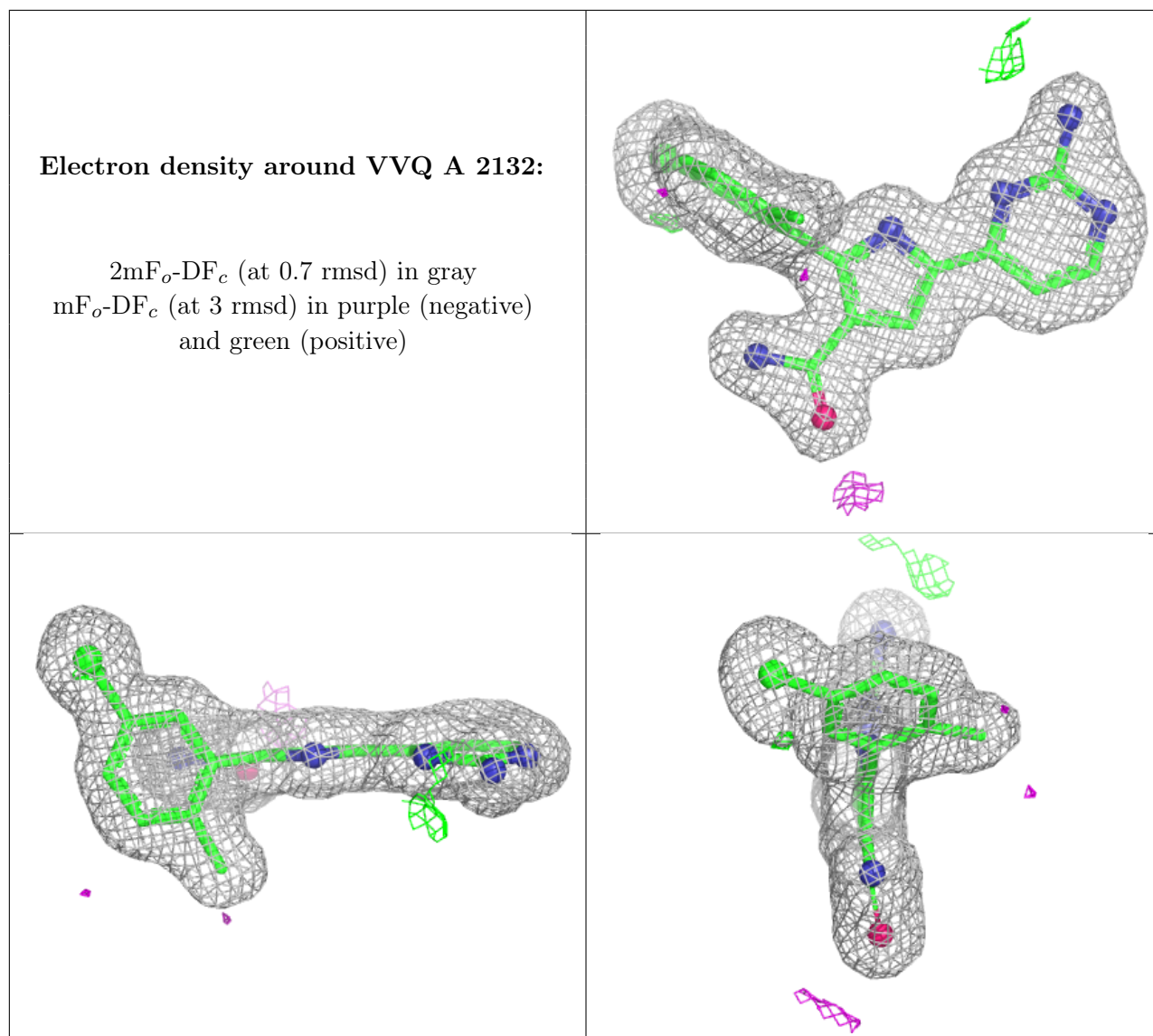
There are no monosaccharides in this entry.

6.4 Ligands [i](#)

In the following table, the Atoms column lists the number of modelled atoms in the group and the number defined in the chemical component dictionary. The B-factors column lists the minimum, median, 95th percentile and maximum values of B factors of atoms in the group. The column labelled 'Q< 0.9' lists the number of atoms with occupancy less than 0.9.

Mol	Type	Chain	Res	Atoms	RSCC	RSR	B-factors(\AA^2)	Q<0.9
2	GOL	A	2131	6/6	0.89	0.16	36,40,42,43	6
3	VVQ	A	2132	23/23	0.97	0.07	15,17,21,28	0

The following is a graphical depiction of the model fit to experimental electron density of all instances of the Ligand of Interest. In addition, ligands with molecular weight > 250 and outliers as shown on the geometry validation Tables will also be included. Each fit is shown from different orientation to approximate a three-dimensional view.



6.5 Other polymers ⓘ

There are no such residues in this entry.