



# Full wwPDB X-ray Structure Validation Report ⓘ

Apr 28, 2024 – 05:54 pm BST

PDB ID : 4CTW  
Title : Structure of rat neuronal nitric oxide synthase heme domain in complex with (R)-6-(3-amino-2-(5-(2-(6-amino-4-methylpyridin-2-yl) ethyl)pyridin-3-yl)propyl)-4-methylpyridin-2-amine  
Authors : Li, H.; Poulos, T.L.  
Deposited on : 2014-03-15  
Resolution : 1.90 Å(reported)

This is a Full wwPDB X-ray Structure Validation Report for a publicly released PDB entry.

We welcome your comments at [validation@mail.wwpdb.org](mailto:validation@mail.wwpdb.org)

A user guide is available at

<https://www.wwpdb.org/validation/2017/XrayValidationReportHelp>

with specific help available everywhere you see the ⓘ symbol.

The types of validation reports are described at

<http://www.wwpdb.org/validation/2017/FAQs#types>.

---

The following versions of software and data (see [references ⓘ](#)) were used in the production of this report:

MolProbity : 4.02b-467  
Mogul : 1.8.4, CSD as541be (2020)  
Xtrriage (Phenix) : 1.13  
EDS : 2.36.2  
buster-report : 1.1.7 (2018)  
Percentile statistics : 20191225.v01 (using entries in the PDB archive December 25th 2019)  
Refmac : 5.8.0158  
CCP4 : 7.0.044 (Gargrove)  
Ideal geometry (proteins) : Engh & Huber (2001)  
Ideal geometry (DNA, RNA) : Parkinson et al. (1996)  
Validation Pipeline (wwPDB-VP) : 2.36.2

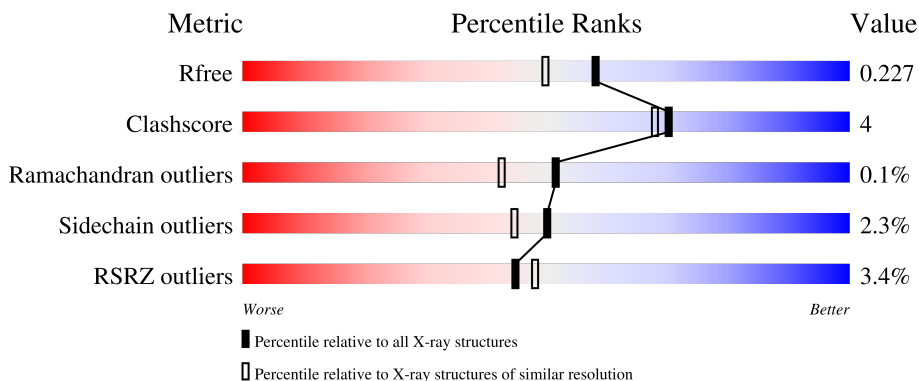
# 1 Overall quality at a glance

The following experimental techniques were used to determine the structure:

*X-RAY DIFFRACTION*


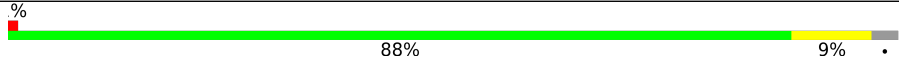
The reported resolution of this entry is 1.90 Å.

Percentile scores (ranging between 0-100) for global validation metrics of the entry are shown in the following graphic. The table shows the number of entries on which the scores are based.



Metric	Whole archive (#Entries)	Similar resolution (#Entries, resolution range(Å))
$R_{free}$	130704	6207 (1.90-1.90)
Clashscore	141614	6847 (1.90-1.90)
Ramachandran outliers	138981	6760 (1.90-1.90)
Sidechain outliers	138945	6760 (1.90-1.90)
RSRZ outliers	127900	6082 (1.90-1.90)

The table below summarises the geometric issues observed across the polymeric chains and their fit to the electron density. The red, orange, yellow and green segments of the lower bar indicate the fraction of residues that contain outliers for  $\geq 3$ , 2, 1 and 0 types of geometric quality criteria respectively. A grey segment represents the fraction of residues that are not modelled. The numeric value for each fraction is indicated below the corresponding segment, with a dot representing fractions  $\leq 5\%$ . The upper red bar (where present) indicates the fraction of residues that have poor fit to the electron density. The numeric value is given above the bar.

Mol	Chain	Length	Quality of chain
1	A	422	 5% 87% 9% . .
1	B	422	 % 88% 9% .

## 2 Entry composition i

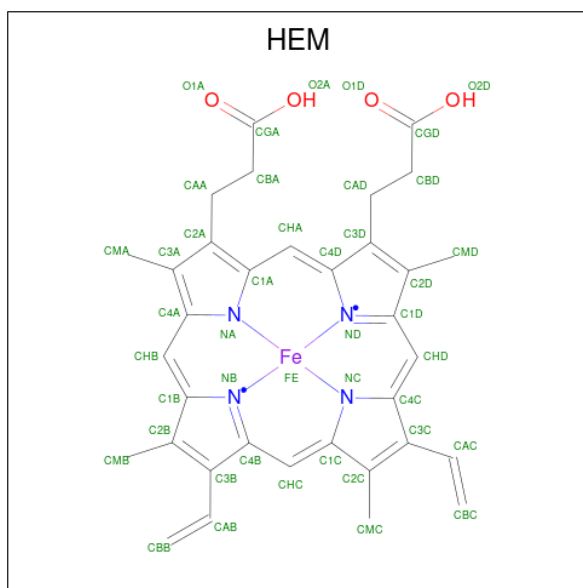
There are 7 unique types of molecules in this entry. The entry contains 7308 atoms, of which 0 are hydrogens and 0 are deuteriums.

In the tables below, the ZeroOcc column contains the number of atoms modelled with zero occupancy, the AltConf column contains the number of residues with at least one atom in alternate conformation and the Trace column contains the number of residues modelled with at most 2 atoms.

- Molecule 1 is a protein called NITRIC OXIDE SYNTHASE, BRAIN.

Mol	Chain	Residues	Atoms					ZeroOcc	AltConf	Trace
			Total	C	N	O	S			
1	A	408	Total 3326	C 2129	N 567	O 608	S 22	0	3	1
1	B	411	Total 3356	C 2150	N 574	O 610	S 22	0	2	0

- Molecule 2 is PROTOPORPHYRIN IX CONTAINING FE (three-letter code: HEM) (formula:  $C_{34}H_{32}FeN_4O_4$ ).



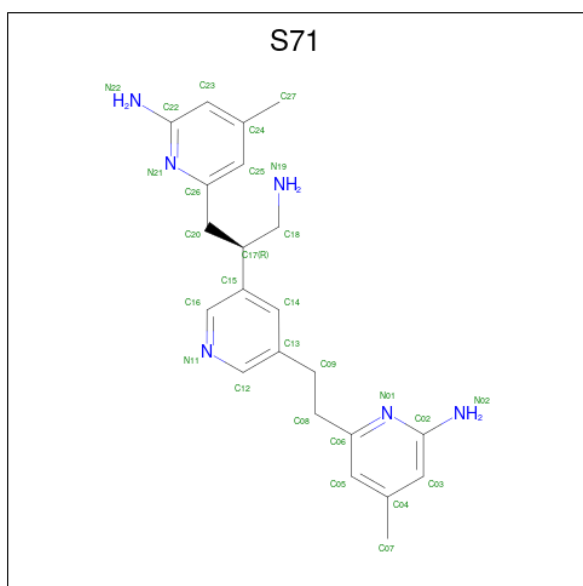
Mol	Chain	Residues	Atoms					ZeroOcc	AltConf
			Total	C	Fe	N	O		
2	A	1	Total 43	C 34	Fe 1	N 4	O 4	0	0
2	B	1	Total 43	C 34	Fe 1	N 4	O 4	0	0

- Molecule 3 is 5,6,7,8-TETRAHYDROBIOPTERIN (three-letter code: H4B) (formula:  $C_9H_{15}N_5O_3$ ).



Mol	Chain	Residues	Atoms				ZeroOcc	AltConf
3	A	1	Total	C	N	O	0	0
			17	9	5	3		
3	B	1	Total	C	N	O	0	0
			17	9	5	3		

- Molecule 4 is (R)-6-(3-amino-2-(5-(2-(6-amino-4-methylpyridin-2-yl)ethyl)pyridin-3-yl)propyl)-4-methylpyridin-2-amine (three-letter code: S71) (formula: C<sub>22</sub>H<sub>28</sub>N<sub>6</sub>).



Mol	Chain	Residues	Atoms			ZeroOcc	AltConf
4	A	1	Total	C	N	0	0
			28	22	6		

*Continued on next page...*

Continued from previous page...

Mol	Chain	Residues	Atoms			ZeroOcc	AltConf
			Total	C	N		
4	B	1	28	22	6	0	0

- Molecule 5 is ACETATE ION (three-letter code: ACT) (formula: C<sub>2</sub>H<sub>3</sub>O<sub>2</sub>).



Mol	Chain	Residues	Atoms			ZeroOcc	AltConf
			Total	C	O		
5	A	1	4	2	2	0	0
5	B	1	4	2	2	0	0

- Molecule 6 is ZINC ION (three-letter code: ZN) (formula: Zn).

Mol	Chain	Residues	Atoms		ZeroOcc	AltConf
			Total	Zn		
6	A	1	1	1	0	0

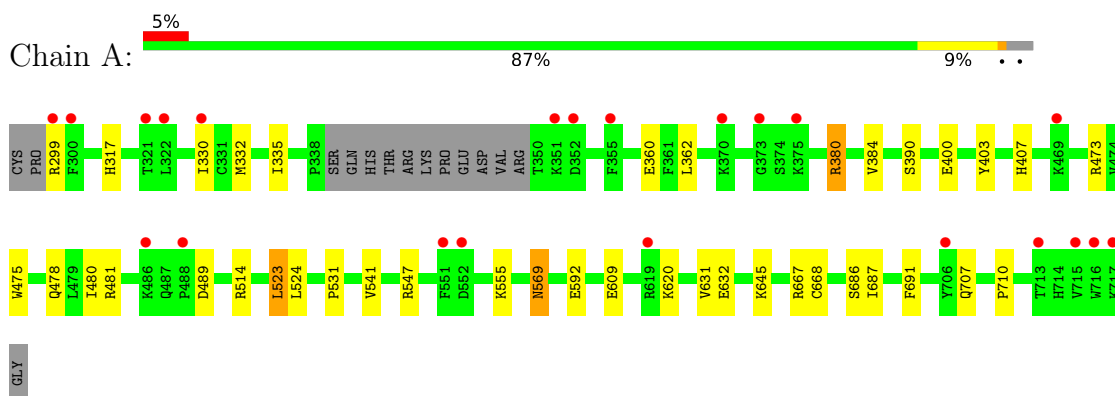
- Molecule 7 is water.

Mol	Chain	Residues	Atoms		ZeroOcc	AltConf
			Total	O		
7	A	189	189	189	0	0
7	B	252	252	252	0	0

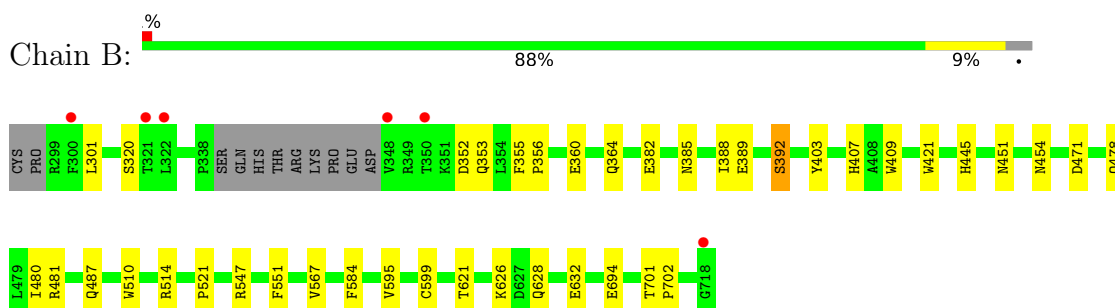
### 3 Residue-property plots [i](#)

These plots are drawn for all protein, RNA, DNA and oligosaccharide chains in the entry. The first graphic for a chain summarises the proportions of the various outlier classes displayed in the second graphic. The second graphic shows the sequence view annotated by issues in geometry and electron density. Residues are color-coded according to the number of geometric quality criteria for which they contain at least one outlier: green = 0, yellow = 1, orange = 2 and red = 3 or more. A red dot above a residue indicates a poor fit to the electron density ( $RSRZ > 2$ ). Stretches of 2 or more consecutive residues without any outlier are shown as a green connector. Residues present in the sample, but not in the model, are shown in grey.

- Molecule 1: NITRIC OXIDE SYNTHASE, BRAIN



- Molecule 1: NITRIC OXIDE SYNTHASE, BRAIN



## 4 Data and refinement statistics

Property	Value	Source
Space group	P 21 21 21	Depositor
Cell constants a, b, c, $\alpha$ , $\beta$ , $\gamma$	52.23Å 110.78Å 164.13Å 90.00° 90.00° 90.00°	Depositor
Resolution (Å)	49.10 – 1.90 49.05 – 1.90	Depositor EDS
% Data completeness (in resolution range)	98.8 (49.10-1.90) 98.8 (49.05-1.90)	Depositor EDS
$R_{merge}$	0.06	Depositor
$R_{sym}$	(Not available)	Depositor
$\langle I/\sigma(I) \rangle$ <sup>1</sup>	2.72 (at 1.91Å)	Xtrriage
Refinement program	REFMAC 5.7.0029	Depositor
R, $R_{free}$	0.189 , 0.228 0.189 , 0.227	Depositor DCC
$R_{free}$ test set	3711 reflections (4.97%)	wwPDB-VP
Wilson B-factor (Å <sup>2</sup> )	25.4	Xtrriage
Anisotropy	0.596	Xtrriage
Bulk solvent $k_{sol}$ (e/Å <sup>3</sup> ), $B_{sol}$ (Å <sup>2</sup> )	0.36 , 44.0	EDS
L-test for twinning <sup>2</sup>	$\langle  L  \rangle = 0.49$ , $\langle L^2 \rangle = 0.32$	Xtrriage
Estimated twinning fraction	No twinning to report.	Xtrriage
$F_o, F_c$ correlation	0.96	EDS
Total number of atoms	7308	wwPDB-VP
Average B, all atoms (Å <sup>2</sup> )	35.0	wwPDB-VP

Xtrriage's analysis on translational NCS is as follows: *The largest off-origin peak in the Patterson function is 4.78% of the height of the origin peak. No significant pseudotranslation is detected.*

<sup>1</sup>Intensities estimated from amplitudes.

<sup>2</sup>Theoretical values of  $\langle |L| \rangle$ ,  $\langle L^2 \rangle$  for acentric reflections are 0.5, 0.333 respectively for untwinned datasets, and 0.375, 0.2 for perfectly twinned datasets.

## 5 Model quality [i](#)

### 5.1 Standard geometry [i](#)

Bond lengths and bond angles in the following residue types are not validated in this section: ZN, ACT, H4B, S71, HEM

The Z score for a bond length (or angle) is the number of standard deviations the observed value is removed from the expected value. A bond length (or angle) with  $|Z| > 5$  is considered an outlier worth inspection. RMSZ is the root-mean-square of all Z scores of the bond lengths (or angles).

Mol	Chain	Bond lengths		Bond angles	
		RMSZ	# Z  >5	RMSZ	# Z  >5
1	A	0.51	0/3428	0.63	0/4651
1	B	0.57	0/3456	0.67	1/4686 (0.0%)
All	All	0.54	0/6884	0.65	1/9337 (0.0%)

There are no bond length outliers.

All (1) bond angle outliers are listed below:

Mol	Chain	Res	Type	Atoms	Z	Observed(°)	Ideal(°)
1	B	471	ASP	CB-CG-OD1	5.26	123.04	118.30

There are no chirality outliers.

There are no planarity outliers.

### 5.2 Too-close contacts [i](#)

In the following table, the Non-H and H(model) columns list the number of non-hydrogen atoms and hydrogen atoms in the chain respectively. The H(added) column lists the number of hydrogen atoms added and optimized by MolProbity. The Clashes column lists the number of clashes within the asymmetric unit, whereas Symm-Clashes lists symmetry-related clashes.

Mol	Chain	Non-H	H(model)	H(added)	Clashes	Symm-Clashes
1	A	3326	0	3237	22	0
1	B	3356	0	3273	25	0
2	A	43	0	30	4	0
2	B	43	0	30	4	0
3	A	17	0	15	0	0
3	B	17	0	15	0	0
4	A	28	0	28	1	0
4	B	28	0	28	1	0

*Continued on next page...*



*Continued from previous page...*

Mol	Chain	Non-H	H(model)	H(added)	Clashes	Symm-Clashes
5	A	4	0	3	0	0
5	B	4	0	3	0	0
6	A	1	0	0	0	0
7	A	189	0	0	2	0
7	B	252	0	0	2	0
All	All	7308	0	6662	49	0

The all-atom clashscore is defined as the number of clashes found per 1000 atoms (including hydrogen atoms). The all-atom clashscore for this structure is 4.

All (49) close contacts within the same asymmetric unit are listed below, sorted by their clash magnitude.

Atom-1	Atom-2	Interatomic distance (Å)	Clash overlap (Å)
1:A:480:ILE:HD13	1:A:541:VAL:HG13	1.72	0.71
1:B:382:GLU:HG3	7:B:2035:HOH:O	1.89	0.71
2:B:1719:HEM:HBB2	2:B:1719:HEM:HHC	1.72	0.71
2:A:1717:HEM:HHC	2:A:1717:HEM:HBB2	1.79	0.65
1:A:523:LEU:HD22	1:A:531:PRO:HB2	1.80	0.63
1:A:609:GLU:HG3	7:A:2146:HOH:O	2.00	0.62
2:A:1717:HEM:CMC	2:A:1717:HEM:HBC2	2.33	0.58
2:A:1717:HEM:HBC2	2:A:1717:HEM:HMC1	1.84	0.58
1:A:478:GLN:HB2	1:A:481:ARG:HG3	1.85	0.58
1:A:335:ILE:HD13	1:B:694:GLU:HB3	1.90	0.54
1:A:475:TRP:HB2	1:A:523:LEU:HB3	1.88	0.54
1:B:551:PHE:HE2	1:B:632:GLU:HG3	1.74	0.53
1:B:364:GLN:NE2	7:B:2022:HOH:O	2.41	0.52
1:B:403:TYR:CE2	1:B:407:HIS:CE1	2.97	0.52
1:B:478:GLN:HB2	1:B:481:ARG:HG3	1.91	0.52
1:A:632:GLU:OE2	1:B:628:GLN:NE2	2.43	0.52
1:B:355[B]:PHE:HB2	1:B:356:PRO:HD3	1.94	0.50
1:A:362:LEU:HD11	1:A:384:VAL:HG21	1.94	0.49
2:B:1719:HEM:HHC	2:B:1719:HEM:CBB	2.40	0.49
1:B:701:THR:HA	1:B:702:PRO:C	2.32	0.49
1:B:355[B]:PHE:HB2	1:B:356:PRO:CD	2.43	0.48
7:A:2111:HOH:O	1:B:621:THR:HG22	2.13	0.48
1:B:356:PRO:O	1:B:360:GLU:HG3	2.14	0.48
1:A:330:ILE:O	1:A:330:ILE:HG23	2.15	0.46
1:A:380:ARG:HD3	1:A:400:GLU:OE2	2.16	0.46
1:A:473:ARG:NH2	1:A:710:PRO:HD3	2.31	0.46
1:B:510:TRP:CE2	1:B:521:PRO:HD3	2.50	0.46
1:B:451:ASN:HB3	1:B:454:ASN:O	2.17	0.44

*Continued on next page...*

Continued from previous page...

Atom-1	Atom-2	Interatomic distance (Å)	Clash overlap (Å)
1:B:409:TRP:CE3	1:B:421:TRP:HA	2.52	0.44
1:B:388:ILE:O	1:B:392:SER:N	2.51	0.44
1:A:687:ILE:HD12	1:B:626:LYS:HB3	2.00	0.44
1:A:403:TYR:CE2	1:A:407:HIS:CE1	3.06	0.43
1:A:569:ASN:HD22	1:A:569:ASN:H	1.65	0.43
1:B:445:HIS:C	1:B:445:HIS:CD2	2.92	0.43
1:A:631:VAL:HG11	1:B:628:GLN:HG2	2.01	0.43
1:A:524:LEU:O	1:A:531:PRO:HA	2.19	0.43
1:A:299:ARG:O	1:A:317:HIS:CE1	2.72	0.43
1:A:667:ARG:NH1	1:A:668[A]:CYS:SG	2.92	0.42
1:B:584:PHE:CD1	2:B:1719:HEM:CAC	3.03	0.42
2:A:1717:HEM:HMC1	2:A:1717:HEM:CBC	2.49	0.42
2:B:1719:HEM:HBC2	2:B:1719:HEM:CMC	2.50	0.42
1:A:686:SER:HA	1:A:691:PHE:CG	2.55	0.42
1:A:332:MET:CE	1:B:301:LEU:HD22	2.49	0.42
1:B:567:VAL:HG23	4:B:1721:S71:H05	2.02	0.41
1:B:595:VAL:O	1:B:599:CYS:HB2	2.20	0.41
1:B:487:GLN:OE1	1:B:514:ARG:NH2	2.53	0.41
1:B:355[A]:PHE:CE1	1:B:385:ASN:HB2	2.55	0.41
1:A:592:GLU:OE1	4:A:1719:S71:N01	2.54	0.41
1:A:569:ASN:O	1:A:707:GLN:HG2	2.21	0.40

There are no symmetry-related clashes.

## 5.3 Torsion angles [i](#)

### 5.3.1 Protein backbone [i](#)

In the following table, the Percentiles column shows the percent Ramachandran outliers of the chain as a percentile score with respect to all X-ray entries followed by that with respect to entries of similar resolution.

The Analysed column shows the number of residues for which the backbone conformation was analysed, and the total number of residues.

Mol	Chain	Analysed	Favoured	Allowed	Outliers	Percentiles	
1	A	407/422 (96%)	393 (97%)	13 (3%)	1 (0%)	47	38
1	B	409/422 (97%)	403 (98%)	6 (2%)	0	100	100
All	All	816/844 (97%)	796 (98%)	19 (2%)	1 (0%)	51	42

All (1) Ramachandran outliers are listed below:

Mol	Chain	Res	Type
1	A	489	ASP

### 5.3.2 Protein sidechains [i](#)

In the following table, the Percentiles column shows the percent sidechain outliers of the chain as a percentile score with respect to all X-ray entries followed by that with respect to entries of similar resolution.

The Analysed column shows the number of residues for which the sidechain conformation was analysed, and the total number of residues.

Mol	Chain	Analysed	Rotameric	Outliers	Percentiles	
1	A	366/377 (97%)	356 (97%)	10 (3%)	44	38
1	B	368/377 (98%)	361 (98%)	7 (2%)	57	53
All	All	734/754 (97%)	717 (98%)	17 (2%)	50	45

All (17) residues with a non-rotameric sidechain are listed below:

Mol	Chain	Res	Type
1	A	360	GLU
1	A	380	ARG
1	A	390	SER
1	A	514	ARG
1	A	523	LEU
1	A	547	ARG
1	A	555	LYS
1	A	569	ASN
1	A	620	LYS
1	A	645	LYS
1	B	320	SER
1	B	352	ASP
1	B	353	GLN
1	B	389	GLU
1	B	392	SER
1	B	480	ILE
1	B	547	ARG

Sometimes sidechains can be flipped to improve hydrogen bonding and reduce clashes. All (14) such sidechains are listed below:

Mol	Chain	Res	Type
1	A	353	GLN
1	A	454	ASN
1	A	527	ASN
1	A	569	ASN
1	A	605	ASN
1	A	697	ASN
1	B	364	GLN
1	B	454	ASN
1	B	507	GLN
1	B	527	ASN
1	B	601	ASN
1	B	605	ASN
1	B	628	GLN
1	B	697	ASN

### 5.3.3 RNA [i](#)

There are no RNA molecules in this entry.

## 5.4 Non-standard residues in protein, DNA, RNA chains [i](#)

There are no non-standard protein/DNA/RNA residues in this entry.

## 5.5 Carbohydrates [i](#)

There are no monosaccharides in this entry.

## 5.6 Ligand geometry [i](#)

Of 9 ligands modelled in this entry, 1 is monoatomic - leaving 8 for Mogul analysis.

In the following table, the Counts columns list the number of bonds (or angles) for which Mogul statistics could be retrieved, the number of bonds (or angles) that are observed in the model and the number of bonds (or angles) that are defined in the Chemical Component Dictionary. The Link column lists molecule types, if any, to which the group is linked. The Z score for a bond length (or angle) is the number of standard deviations the observed value is removed from the expected value. A bond length (or angle) with  $|Z| > 2$  is considered an outlier worth inspection. RMSZ is the root-mean-square of all Z scores of the bond lengths (or angles).

Mol	Type	Chain	Res	Link	Bond lengths			Bond angles		
					Counts	RMSZ	$\# Z  > 2$	Counts	RMSZ	$\# Z  > 2$
2	HEM	A	1717	1	41,50,50	1.35	7 (17%)	45,82,82	1.72	9 (20%)

Mol	Type	Chain	Res	Link	Bond lengths			Bond angles		
					Counts	RMSZ	# Z  > 2	Counts	RMSZ	# Z  > 2
3	H4B	A	1718	-	16,18,18	1.29	3 (18%)	11,26,26	2.93	6 (54%)
5	ACT	A	1720	-	3,3,3	0.85	0	3,3,3	0.75	0
3	H4B	B	1720	-	16,18,18	1.30	2 (12%)	11,26,26	2.68	5 (45%)
2	HEM	B	1719	1	41,50,50	1.45	8 (19%)	45,82,82	1.93	12 (26%)
5	ACT	B	1722	-	3,3,3	0.68	0	3,3,3	1.07	0
4	S71	A	1719	-	29,30,30	0.82	0	36,41,41	2.03	9 (25%)
4	S71	B	1721	-	29,30,30	0.90	0	36,41,41	2.30	12 (33%)

In the following table, the Chirals column lists the number of chiral outliers, the number of chiral centers analysed, the number of these observed in the model and the number defined in the Chemical Component Dictionary. Similar counts are reported in the Torsion and Rings columns. '-' means no outliers of that kind were identified.

Mol	Type	Chain	Res	Link	Chirals	Torsions	Rings
2	HEM	A	1717	1	-	2/12/54/54	-
3	H4B	A	1718	-	-	0/8/17/17	0/2/2/2
3	H4B	B	1720	-	-	0/8/17/17	0/2/2/2
2	HEM	B	1719	1	-	0/12/54/54	-
4	S71	A	1719	-	-	2/15/15/15	0/3/3/3
4	S71	B	1721	-	-	2/15/15/15	0/3/3/3

All (20) bond length outliers are listed below:

Mol	Chain	Res	Type	Atoms	Z	Observed(Å)	Ideal(Å)
2	B	1719	HEM	C3B-C4B	3.14	1.51	1.44
2	A	1717	HEM	FE-NB	3.00	2.11	1.96
3	A	1718	H4B	C4-N3	2.97	1.38	1.33
3	A	1718	H4B	C2-N2	2.97	1.39	1.33
2	A	1717	HEM	C3B-C4B	2.94	1.50	1.44
2	A	1717	HEM	C1B-NB	-2.79	1.35	1.40
2	B	1719	HEM	C1B-NB	-2.67	1.35	1.40
2	A	1717	HEM	CHA-C4D	2.47	1.41	1.35
2	B	1719	HEM	O2A-CGA	-2.37	1.22	1.30
2	B	1719	HEM	FE-NB	2.36	2.08	1.96
3	B	1720	H4B	C4-N3	2.35	1.37	1.33
2	A	1717	HEM	CHB-C1B	2.35	1.41	1.35
2	B	1719	HEM	CHA-C4D	2.34	1.41	1.35
2	A	1717	HEM	C1D-C2D	2.30	1.49	1.44
2	A	1717	HEM	C4B-NB	-2.28	1.34	1.38
3	A	1718	H4B	C7-N8	2.23	1.48	1.44

*Continued on next page...*

*Continued from previous page...*

Mol	Chain	Res	Type	Atoms	Z	Observed(Å)	Ideal(Å)
2	B	1719	HEM	CHB-C1B	2.14	1.40	1.35
2	B	1719	HEM	C1D-ND	-2.12	1.34	1.38
2	B	1719	HEM	C3C-C2C	-2.07	1.37	1.40
3	B	1720	H4B	C2-N2	2.03	1.38	1.33

All (53) bond angle outliers are listed below:

Mol	Chain	Res	Type	Atoms	Z	Observed(°)	Ideal(°)
4	B	1721	S71	C02-N01-C06	7.24	123.59	118.10
4	A	1719	S71	C02-N01-C06	5.73	122.44	118.10
3	A	1718	H4B	C4-C4A-N5	5.35	123.61	119.12
3	B	1720	H4B	C8A-C4A-C4	5.12	119.12	114.57
2	B	1719	HEM	CHC-C4B-NB	4.49	129.31	124.43
2	B	1719	HEM	C1B-NB-C4B	4.46	109.68	105.07
4	B	1721	S71	C14-C15-C16	4.40	120.38	117.44
4	A	1719	S71	C22-N21-C26	4.34	121.39	118.10
3	A	1718	H4B	N1-C2-N3	-4.33	118.63	125.42
2	A	1717	HEM	C1B-NB-C4B	4.31	109.52	105.07
4	B	1721	S71	C22-N21-C26	4.27	121.34	118.10
4	A	1719	S71	C14-C15-C16	4.21	120.25	117.44
4	B	1721	S71	C05-C06-N01	-4.07	118.58	122.90
3	A	1718	H4B	C2-N1-C8A	3.94	123.38	114.54
2	B	1719	HEM	CHD-C1D-ND	3.79	128.55	124.43
2	B	1719	HEM	CBA-CAA-C2A	-3.74	106.23	112.62
3	B	1720	H4B	C2-N3-C4	3.69	121.80	115.93
2	A	1717	HEM	CBA-CAA-C2A	-3.69	106.33	112.62
2	A	1717	HEM	CHA-C4D-ND	3.47	128.67	124.38
2	A	1717	HEM	CHC-C4B-NB	3.44	128.17	124.43
4	B	1721	S71	C08-C06-C05	3.44	125.78	121.22
3	B	1720	H4B	N1-C2-N3	-3.41	120.07	125.42
2	B	1719	HEM	C4C-CHD-C1D	-3.37	118.12	122.56
2	B	1719	HEM	CHD-C1D-C2D	-3.36	119.73	124.98
2	A	1717	HEM	CHA-C4D-C3D	-3.32	119.09	125.33
4	B	1721	S71	C12-N11-C16	3.24	121.90	117.48
4	A	1719	S71	C15-C16-N11	-3.23	119.06	124.14
4	A	1719	S71	C12-N11-C16	3.21	121.86	117.48
4	B	1721	S71	C15-C16-N11	-3.08	119.30	124.14
3	B	1720	H4B	C4-C4A-N5	2.98	121.62	119.12
4	A	1719	S71	C05-C06-N01	-2.96	119.76	122.90
2	B	1719	HEM	CHA-C4D-C3D	-2.90	119.88	125.33
3	A	1718	H4B	C2-N3-C4	2.88	120.50	115.93
2	B	1719	HEM	CHA-C4D-ND	2.83	127.88	124.38

*Continued on next page...*

Continued from previous page...

Mol	Chain	Res	Type	Atoms	Z	Observed(°)	Ideal(°)
4	B	1721	S71	N22-C22-N21	2.83	120.96	116.49
2	B	1719	HEM	CAD-C3D-C4D	2.76	129.49	124.66
2	A	1717	HEM	C4C-CHD-C1D	-2.69	119.01	122.56
3	A	1718	H4B	C8A-C4A-C4	2.69	116.95	114.57
4	A	1719	S71	C04-C05-C06	-2.64	118.59	120.32
3	A	1718	H4B	N2-C2-N1	2.60	121.30	117.25
3	B	1720	H4B	C2-N1-C8A	2.51	120.16	114.54
2	A	1717	HEM	CBD-CAD-C3D	-2.44	105.85	112.63
4	B	1721	S71	C14-C15-C17	-2.42	116.05	120.73
2	B	1719	HEM	O2A-CGA-O1A	-2.37	117.39	123.30
4	B	1721	S71	C25-C26-N21	-2.34	120.42	122.90
4	A	1719	S71	N22-C22-N21	2.31	120.14	116.49
4	B	1721	S71	C14-C13-C12	2.30	118.94	116.71
4	A	1719	S71	C25-C26-N21	-2.18	120.59	122.90
2	B	1719	HEM	CBD-CAD-C3D	-2.16	106.63	112.63
2	B	1719	HEM	O2D-CGD-CBD	2.15	120.94	114.03
2	A	1717	HEM	C3C-C4C-NC	-2.15	106.89	110.94
4	B	1721	S71	C04-C05-C06	-2.05	118.97	120.32
2	A	1717	HEM	CMD-C2D-C1D	2.04	128.15	125.04

There are no chirality outliers.

All (6) torsion outliers are listed below:

Mol	Chain	Res	Type	Atoms
4	B	1721	S71	C15-C17-C18-N19
4	A	1719	S71	N01-C06-C08-C09
4	A	1719	S71	C05-C06-C08-C09
2	A	1717	HEM	C4B-C3B-CAB-CBB
4	B	1721	S71	C05-C06-C08-C09
2	A	1717	HEM	CAD-CBD-CGD-O1D

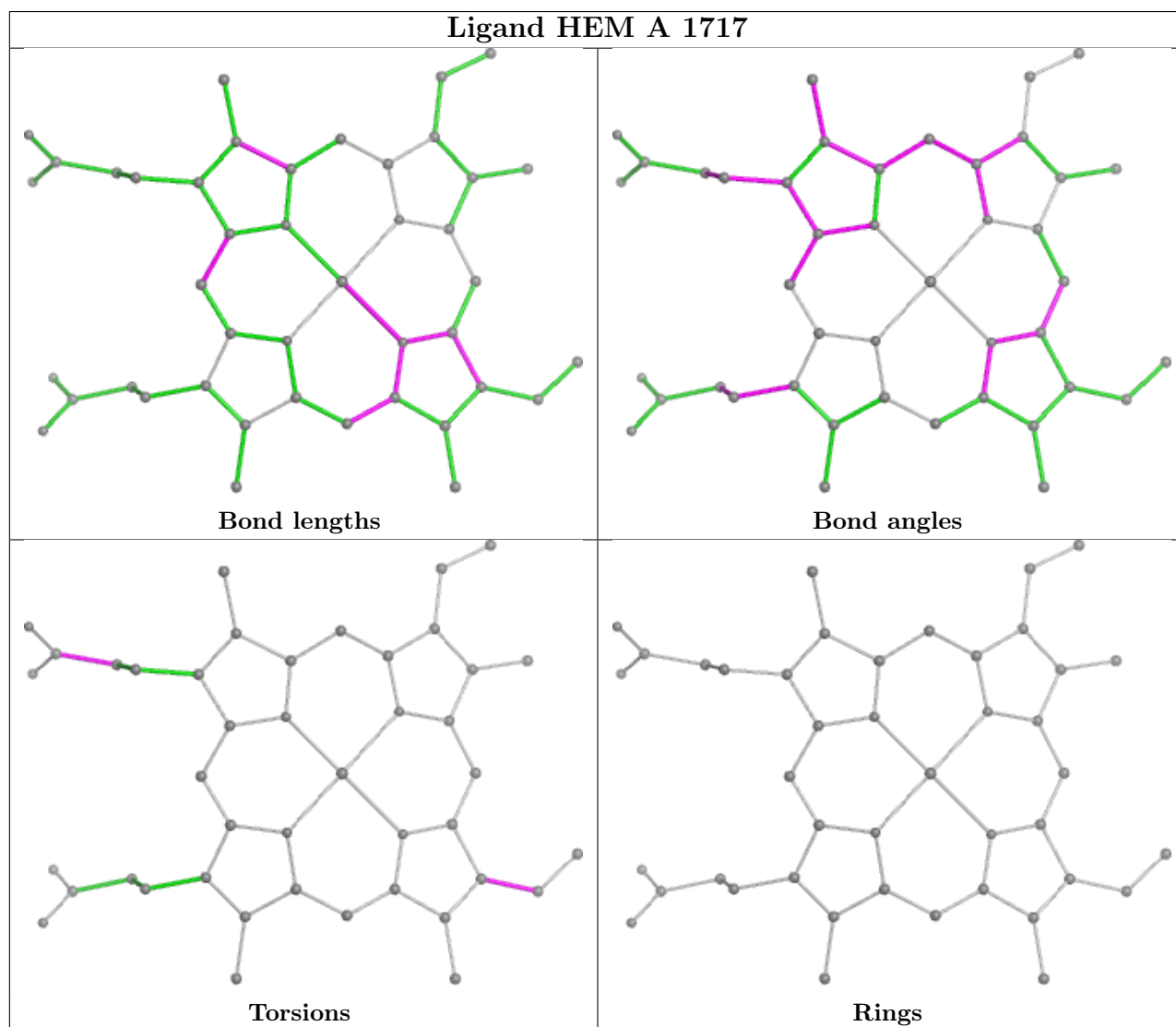
There are no ring outliers.

4 monomers are involved in 10 short contacts:

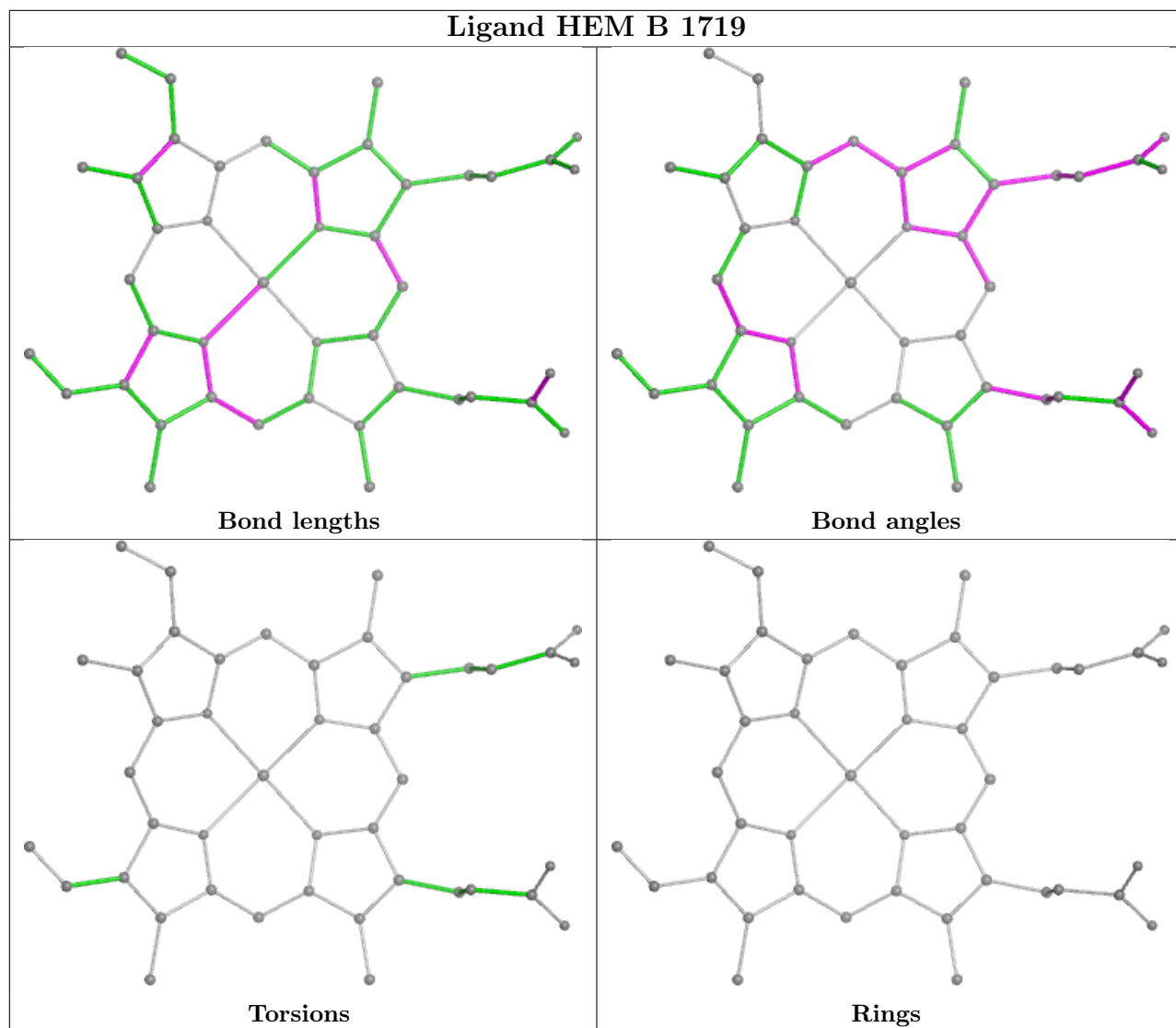
Mol	Chain	Res	Type	Clashes	Symm-Clashes
2	A	1717	HEM	4	0
2	B	1719	HEM	4	0
4	A	1719	S71	1	0
4	B	1721	S71	1	0

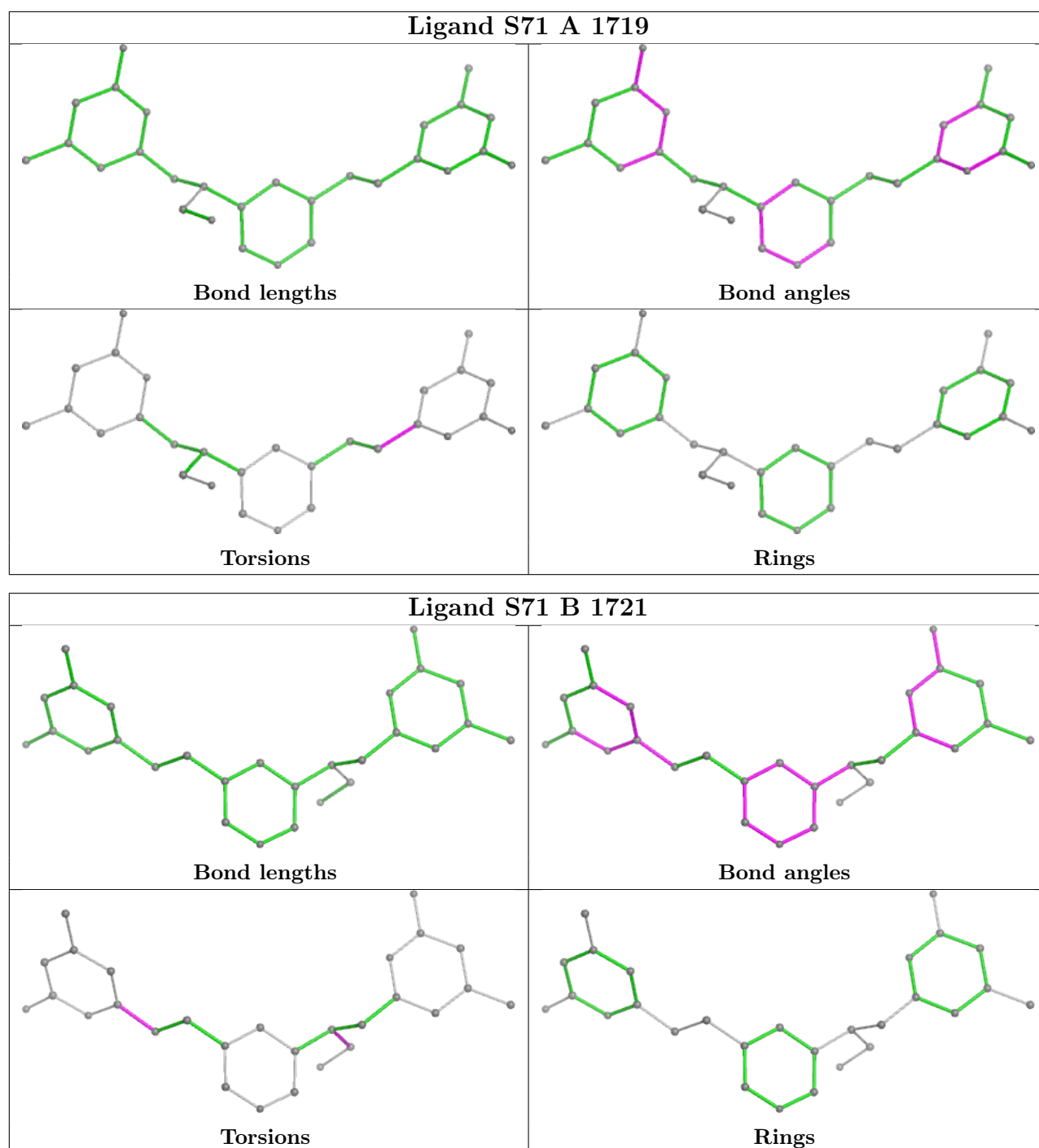
The following is a two-dimensional graphical depiction of Mogul quality analysis of bond lengths,

bond angles, torsion angles, and ring geometry for all instances of the Ligand of Interest. In addition, ligands with molecular weight > 250 and outliers as shown on the validation Tables will also be included. For torsion angles, if less than 5% of the Mogul distribution of torsion angles is within 10 degrees of the torsion angle in question, then that torsion angle is considered an outlier. Any bond that is central to one or more torsion angles identified as an outlier by Mogul will be highlighted in the graph. For rings, the root-mean-square deviation (RMSD) between the ring in question and similar rings identified by Mogul is calculated over all ring torsion angles. If the average RMSD is greater than 60 degrees and the minimal RMSD between the ring in question and any Mogul-identified rings is also greater than 60 degrees, then that ring is considered an outlier. The outliers are highlighted in purple. The color gray indicates Mogul did not find sufficient equivalents in the CSD to analyse the geometry.









## 5.7 Other polymers [i](#)

There are no such residues in this entry.

## 5.8 Polymer linkage issues [i](#)

There are no chain breaks in this entry.

## 6 Fit of model and data

### 6.1 Protein, DNA and RNA chains

In the following table, the column labelled ‘#RSRZ > 2’ contains the number (and percentage) of RSRZ outliers, followed by percent RSRZ outliers for the chain as percentile scores relative to all X-ray entries and entries of similar resolution. The OWAB column contains the minimum, median, 95<sup>th</sup> percentile and maximum values of the occupancy-weighted average B-factor per residue. The column labelled ‘Q < 0.9’ lists the number of (and percentage) of residues with an average occupancy less than 0.9.

Mol	Chain	Analysed	<RSRZ>	#RSRZ>2	OWAB(Å <sup>2</sup> )	Q<0.9
1	A	408/422 (96%)	0.28	22 (5%) 25 29	16, 38, 70, 90	0
1	B	411/422 (97%)	-0.03	6 (1%) 73 76	16, 28, 51, 70	0
All	All	819/844 (97%)	0.12	28 (3%) 45 48	16, 32, 65, 90	0

All (28) RSRZ outliers are listed below:

Mol	Chain	Res	Type	RSRZ
1	A	488	PRO	4.7
1	A	373	GLY	3.9
1	A	355	PHE	3.8
1	A	321	THR	3.8
1	B	348	VAL	3.4
1	A	322	LEU	3.4
1	A	713	THR	3.2
1	A	300	PHE	3.1
1	A	552	ASP	3.1
1	A	551	PHE	3.1
1	B	322	LEU	3.0
1	A	352	ASP	3.0
1	B	718	GLY	2.8
1	A	370	LYS	2.8
1	A	299	ARG	2.7
1	B	300	PHE	2.7
1	B	321	THR	2.6
1	A	706	TYR	2.6
1	A	715	VAL	2.5
1	A	717	LYS	2.4
1	A	716	TRP	2.3
1	A	469	LYS	2.3
1	A	486	LYS	2.3
1	B	350	THR	2.3

*Continued on next page...*

*Continued from previous page...*

Mol	Chain	Res	Type	RSRZ
1	A	619	ARG	2.1
1	A	351	LYS	2.1
1	A	330	ILE	2.1
1	A	375	LYS	2.0

## 6.2 Non-standard residues in protein, DNA, RNA chains [i](#)

There are no non-standard protein/DNA/RNA residues in this entry.

## 6.3 Carbohydrates [i](#)

There are no monosaccharides in this entry.

## 6.4 Ligands [i](#)

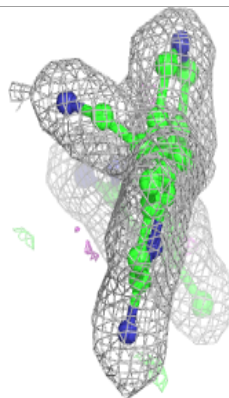
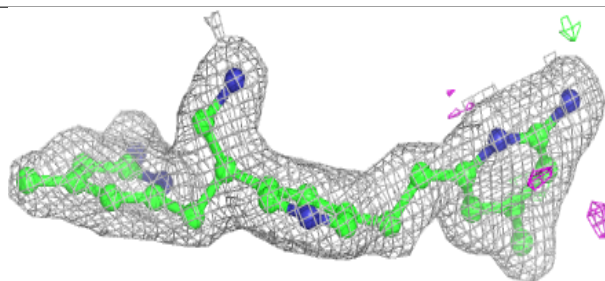
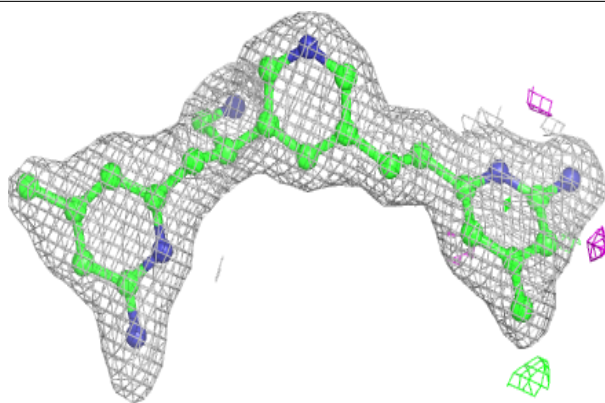
In the following table, the Atoms column lists the number of modelled atoms in the group and the number defined in the chemical component dictionary. The B-factors column lists the minimum, median, 95<sup>th</sup> percentile and maximum values of B factors of atoms in the group. The column labelled 'Q< 0.9' lists the number of atoms with occupancy less than 0.9.

Mol	Type	Chain	Res	Atoms	RSCC	RSR	B-factors(Å <sup>2</sup> )	Q<0.9
5	ACT	A	1720	4/4	0.81	0.29	54,56,58,61	0
5	ACT	B	1722	4/4	0.91	0.15	49,49,50,52	0
4	S71	A	1719	28/28	0.95	0.11	20,30,34,36	0
4	S71	B	1721	28/28	0.95	0.11	20,27,29,31	0
3	H4B	A	1718	17/17	0.96	0.09	18,20,24,25	0
2	HEM	A	1717	43/43	0.97	0.12	20,22,26,29	0
3	H4B	B	1720	17/17	0.97	0.10	18,20,24,24	0
2	HEM	B	1719	43/43	0.97	0.12	17,19,24,28	0
6	ZN	A	1721	1/1	0.99	0.07	26,26,26,26	0

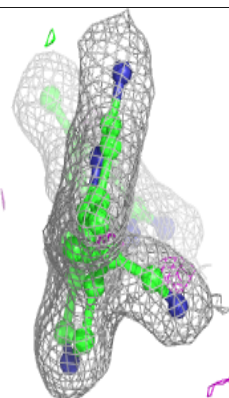
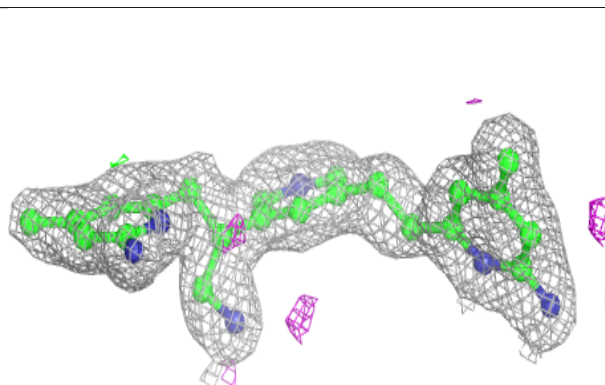
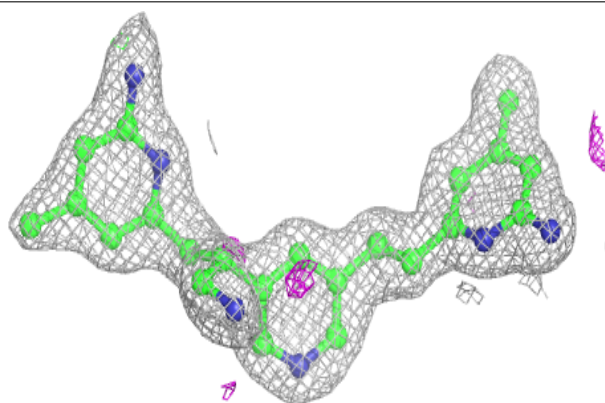
The following is a graphical depiction of the model fit to experimental electron density of all instances of the Ligand of Interest. In addition, ligands with molecular weight > 250 and outliers as shown on the geometry validation Tables will also be included. Each fit is shown from different orientation to approximate a three-dimensional view.

**Electron density around S71 A 1719:**

$2mF_o-DF_c$  (at 0.7 rmsd) in gray  
 $mF_o-DF_c$  (at 3 rmsd) in purple (negative)  
and green (positive)

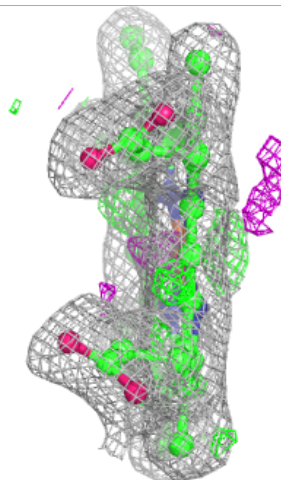
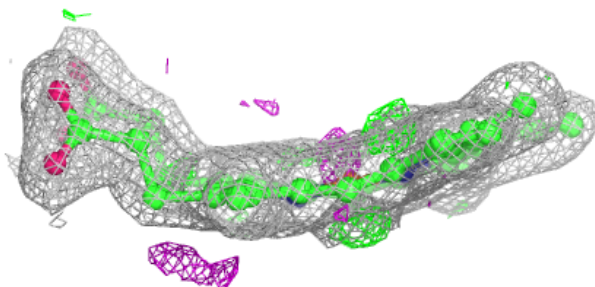
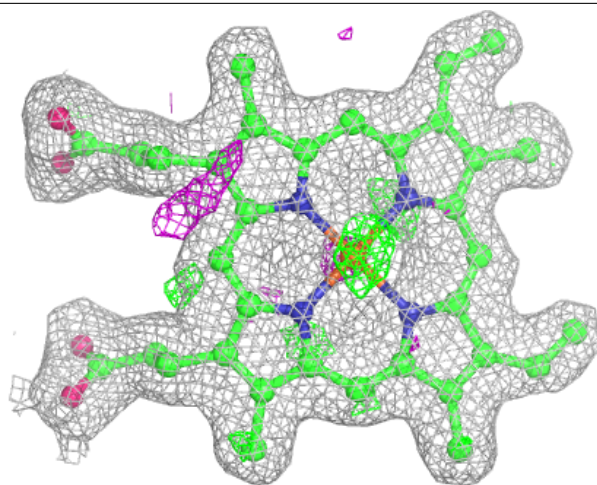
**Electron density around S71 B 1721:**

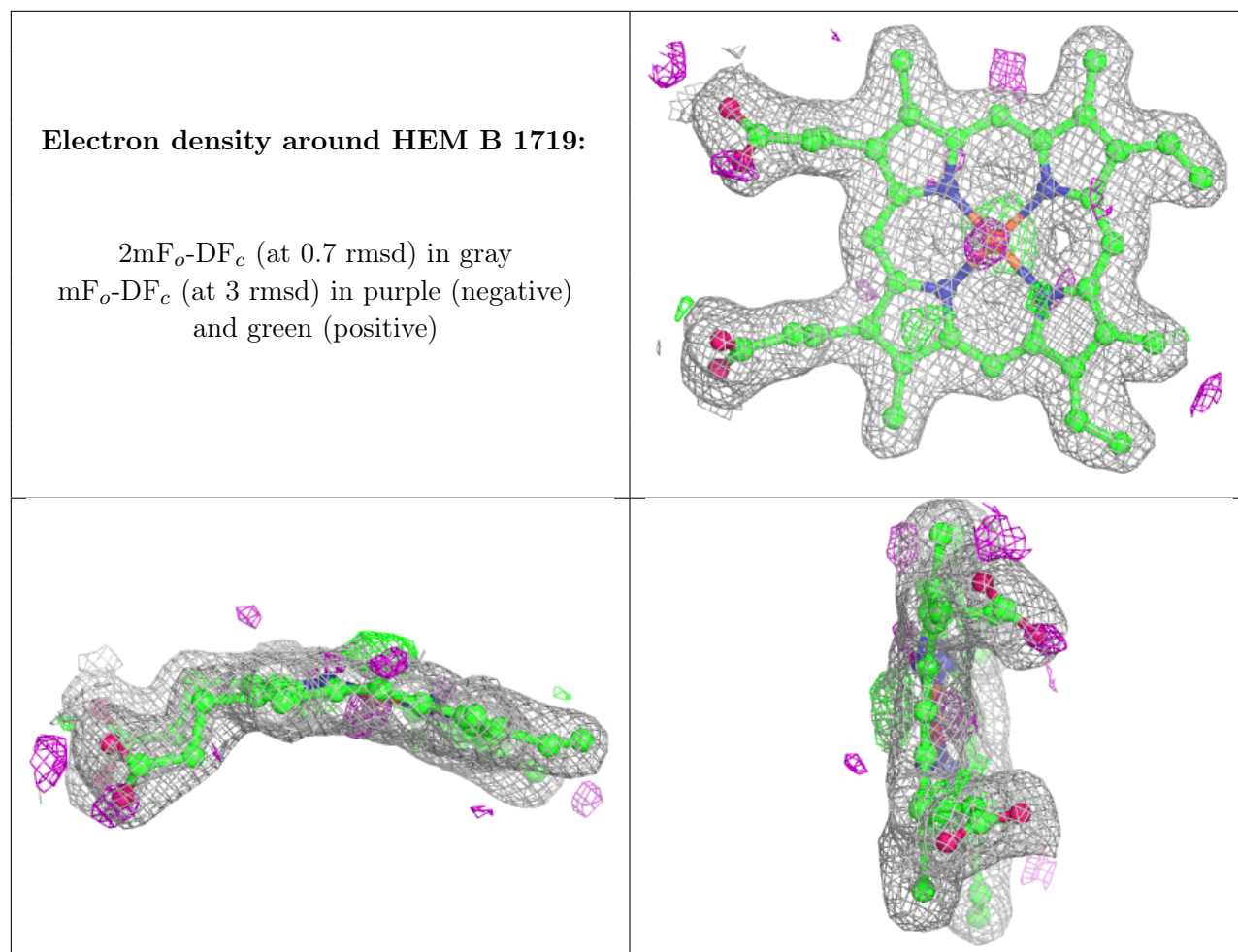
$2mF_o-DF_c$  (at 0.7 rmsd) in gray  
 $mF_o-DF_c$  (at 3 rmsd) in purple (negative)  
and green (positive)



**Electron density around HEM A 1717:**

$2mF_o-DF_c$  (at 0.7 rmsd) in gray  
 $mF_o-DF_c$  (at 3 rmsd) in purple (negative)  
and green (positive)





## 6.5 Other polymers [\(i\)](#)

There are no such residues in this entry.