



Full wwPDB X-ray Structure Validation Report ⓘ

Dec 17, 2023 – 06:53 am GMT

PDB ID : 4COO
Title : Crystal structure of human cystathionine beta-synthase (delta516-525) at 2.0 angstrom resolution
Authors : McCorvie, T.J.; Kopec, J.; Vollamar, M.; Strain-Damerell, C.; Bushell, S.; Bradley, A.; Tallant, C.; Kiyani, W.; Froese, D.S.; Carpenter, E.S.; Burgess-Brown, N.; von Delft, F.; Arrowsmith, C.; Edwards, A.; Bountra, C.; Yue, W.W.
Deposited on : 2014-01-29
Resolution : 2.00 Å(reported)

This is a Full wwPDB X-ray Structure Validation Report for a publicly released PDB entry.

We welcome your comments at validation@mail.wwpdb.org

A user guide is available at

<https://www.wwpdb.org/validation/2017/XrayValidationReportHelp>

with specific help available everywhere you see the ⓘ symbol.

The types of validation reports are described at

<http://www.wwpdb.org/validation/2017/FAQs#types>.

The following versions of software and data (see [references ⓘ](#)) were used in the production of this report:

MolProbity : 4.02b-467
Mogul : 1.8.4, CSD as541be (2020)
Xtriage (Phenix) : 1.13
EDS : 2.36
buster-report : 1.1.7 (2018)
Percentile statistics : 20191225.v01 (using entries in the PDB archive December 25th 2019)
Refmac : 5.8.0158
CCP4 : 7.0.044 (Gargrove)
Ideal geometry (proteins) : Engh & Huber (2001)

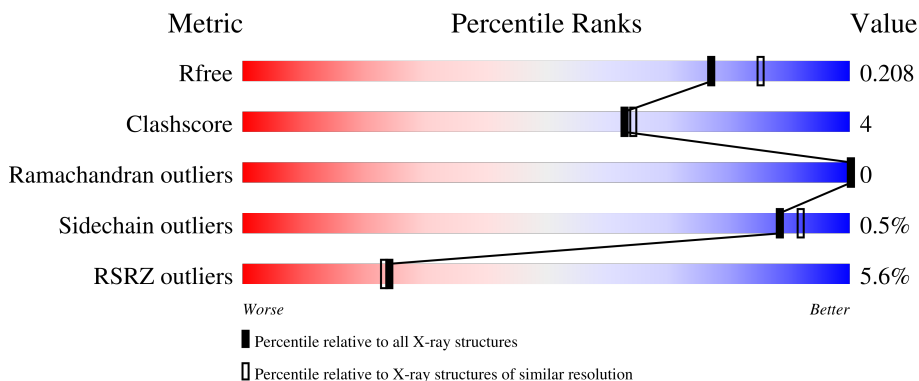
1 Overall quality at a glance

The following experimental techniques were used to determine the structure:

X-RAY DIFFRACTION

The reported resolution of this entry is 2.00 Å.

Percentile scores (ranging between 0-100) for global validation metrics of the entry are shown in the following graphic. The table shows the number of entries on which the scores are based.



Metric	Whole archive (#Entries)	Similar resolution (#Entries, resolution range(Å))
R_{free}	130704	8085 (2.00-2.00)
Clashscore	141614	9178 (2.00-2.00)
Ramachandran outliers	138981	9054 (2.00-2.00)
Sidechain outliers	138945	9053 (2.00-2.00)
RSRZ outliers	127900	7900 (2.00-2.00)

The table below summarises the geometric issues observed across the polymeric chains and their fit to the electron density. The red, orange, yellow and green segments of the lower bar indicate the fraction of residues that contain outliers for ≥ 3 , 2, 1 and 0 types of geometric quality criteria respectively. A grey segment represents the fraction of residues that are not modelled. The numeric value for each fraction is indicated below the corresponding segment, with a dot representing fractions $\leq 5\%$. The upper red bar (where present) indicates the fraction of residues that have poor fit to the electron density. The numeric value is given above the bar.

Mol	Chain	Length	Quality of chain
1	A	563	 4% 80% 7% 12%
1	B	563	 6% 82% • 13%

The following table lists non-polymeric compounds, carbohydrate monomers and non-standard

Ideal geometry (DNA, RNA) : Parkinson et al. (1996)
 Validation Pipeline (wwPDB-VP) : 2.36

residues in protein, DNA, RNA chains that are outliers for geometric or electron-density-fit criteria:

Mol	Type	Chain	Res	Chirality	Geometry	Clashes	Electron density
3	ACT	A	1550	-	-	X	-
3	ACT	B	1540	-	-	X	-
3	ACT	B	1542	-	-	X	-
3	ACT	B	1546	-	-	X	-
5	EDO	A	1554	-	-	X	-

2 Entry composition i

There are 8 unique types of molecules in this entry. The entry contains 8055 atoms, of which 0 are hydrogens and 0 are deuteriums.

In the tables below, the ZeroOcc column contains the number of atoms modelled with zero occupancy, the AltConf column contains the number of residues with at least one atom in alternate conformation and the Trace column contains the number of residues modelled with at most 2 atoms.

- Molecule 1 is a protein called CYSTATHIONINE BETA-SYNTHASE.

Mol	Chain	Residues	Atoms					ZeroOcc	AltConf	Trace
			Total	C	N	O	S			
1	A	493	3822	2424	668	708	22	0	5	0
1	B	487	3766	2392	657	695	22	0	5	0

There are 64 discrepancies between the modelled and reference sequences:

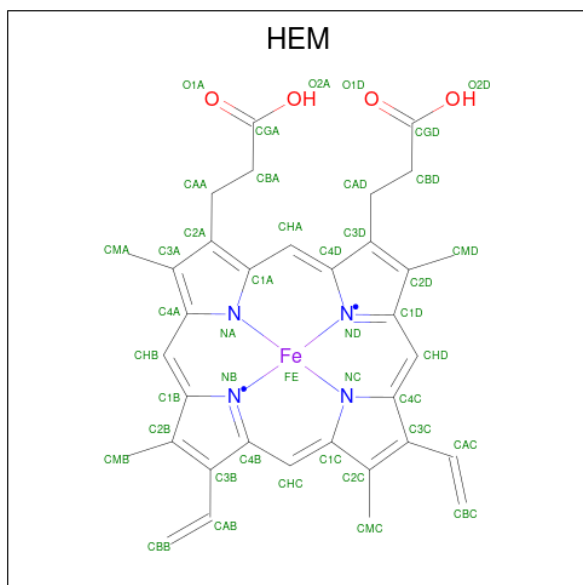
Chain	Residue	Modelled	Actual	Comment	Reference
A	-21	MET	-	expression tag	UNP P35520
A	-20	HIS	-	expression tag	UNP P35520
A	-19	HIS	-	expression tag	UNP P35520
A	-18	HIS	-	expression tag	UNP P35520
A	-17	HIS	-	expression tag	UNP P35520
A	-16	HIS	-	expression tag	UNP P35520
A	-15	HIS	-	expression tag	UNP P35520
A	-14	SER	-	expression tag	UNP P35520
A	-13	SER	-	expression tag	UNP P35520
A	-12	GLY	-	expression tag	UNP P35520
A	-11	VAL	-	expression tag	UNP P35520
A	-10	ASP	-	expression tag	UNP P35520
A	-9	LEU	-	expression tag	UNP P35520
A	-8	GLY	-	expression tag	UNP P35520
A	-7	THR	-	expression tag	UNP P35520
A	-6	GLU	-	expression tag	UNP P35520
A	-5	ASN	-	expression tag	UNP P35520
A	-4	LEU	-	expression tag	UNP P35520
A	-3	TYR	-	expression tag	UNP P35520
A	-2	PHE	-	expression tag	UNP P35520
A	-1	GLN	-	expression tag	UNP P35520
A	0	SER	-	expression tag	UNP P35520
A	?	-	ILE	deletion	UNP P35520
A	?	-	GLN	deletion	UNP P35520
A	?	-	TYR	deletion	UNP P35520

Continued on next page...

Continued from previous page...

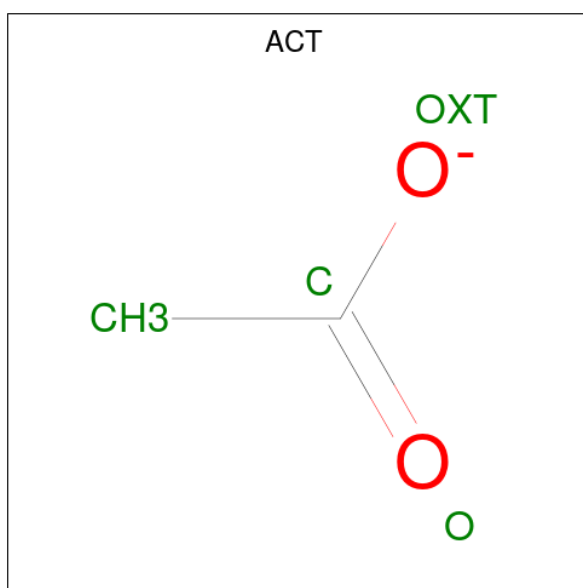
Chain	Residue	Modelled	Actual	Comment	Reference
A	?	-	HIS	deletion	UNP P35520
A	?	-	SER	deletion	UNP P35520
A	?	-	THR	deletion	UNP P35520
A	?	-	GLY	deletion	UNP P35520
A	?	-	LYS	deletion	UNP P35520
A	?	-	SER	deletion	UNP P35520
A	?	-	SER	deletion	UNP P35520
B	-21	MET	-	expression tag	UNP P35520
B	-20	HIS	-	expression tag	UNP P35520
B	-19	HIS	-	expression tag	UNP P35520
B	-18	HIS	-	expression tag	UNP P35520
B	-17	HIS	-	expression tag	UNP P35520
B	-16	HIS	-	expression tag	UNP P35520
B	-15	HIS	-	expression tag	UNP P35520
B	-14	SER	-	expression tag	UNP P35520
B	-13	SER	-	expression tag	UNP P35520
B	-12	GLY	-	expression tag	UNP P35520
B	-11	VAL	-	expression tag	UNP P35520
B	-10	ASP	-	expression tag	UNP P35520
B	-9	LEU	-	expression tag	UNP P35520
B	-8	GLY	-	expression tag	UNP P35520
B	-7	THR	-	expression tag	UNP P35520
B	-6	GLU	-	expression tag	UNP P35520
B	-5	ASN	-	expression tag	UNP P35520
B	-4	LEU	-	expression tag	UNP P35520
B	-3	TYR	-	expression tag	UNP P35520
B	-2	PHE	-	expression tag	UNP P35520
B	-1	GLN	-	expression tag	UNP P35520
B	0	SER	-	expression tag	UNP P35520
B	?	-	ILE	deletion	UNP P35520
B	?	-	GLN	deletion	UNP P35520
B	?	-	TYR	deletion	UNP P35520
B	?	-	HIS	deletion	UNP P35520
B	?	-	SER	deletion	UNP P35520
B	?	-	THR	deletion	UNP P35520
B	?	-	GLY	deletion	UNP P35520
B	?	-	LYS	deletion	UNP P35520
B	?	-	SER	deletion	UNP P35520
B	?	-	SER	deletion	UNP P35520

- Molecule 2 is PROTOPORPHYRIN IX CONTAINING FE (three-letter code: HEM) (formula: C₃₄H₃₂FeN₄O₄).



Mol	Chain	Residues	Atoms				ZeroOcc	AltConf	
2	A	1	Total	C	Fe	N	O	0	0
			43	34	1	4	4		
2	B	1	Total	C	Fe	N	O	0	0
			43	34	1	4	4		

- Molecule 3 is ACETATE ION (three-letter code: ACT) (formula: $C_2H_3O_2$).



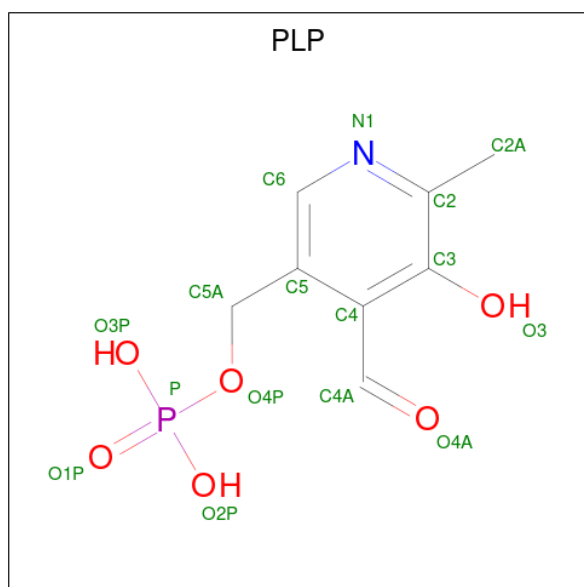
Mol	Chain	Residues	Atoms		ZeroOcc	AltConf	
3	A	1	Total	C	O	0	0
			4	2	2		
3	B	1	Total	C	O	0	0
			4	2	2		

Continued on next page...

Continued from previous page...

Mol	Chain	Residues	Atoms			ZeroOcc	AltConf
3	B	1	Total	C	O	0	0
			4	2	2		
3	B	1	Total	C	O	0	0
			4	2	2		
3	B	1	Total	C	O	0	0
			4	2	2		

- Molecule 4 is PYRIDOXAL-5'-PHOSPHATE (three-letter code: PLP) (formula: C₈H₁₀NO₆P).



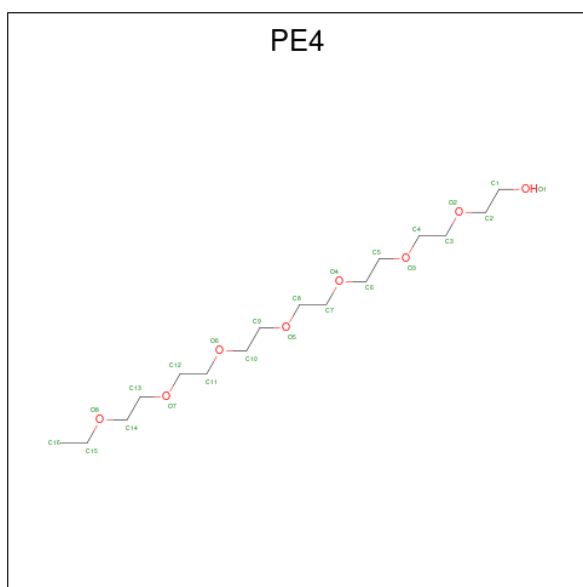
Mol	Chain	Residues	Atoms					ZeroOcc	AltConf
4	A	1	Total	C	N	O	P	0	0
			15	8	1	5	1		
4	B	1	Total	C	N	O	P	0	0
			15	8	1	5	1		

- Molecule 5 is 1,2-ETHANEDIOL (three-letter code: EDO) (formula: C₂H₆O₂).



Mol	Chain	Residues	Atoms	ZeroOcc	AltConf
5	A	1	Total C O 4 2 2	0	0
5	A	1	Total C O 4 2 2	0	0
5	A	1	Total C O 4 2 2	0	0
5	A	1	Total C O 4 2 2	0	0
5	A	1	Total C O 4 2 2	0	0
5	A	1	Total C O 4 2 2	0	0
5	B	1	Total C O 4 2 2	0	0

- Molecule 6 is 2-{2-[2-(2-{2-[2-(2-ETHOXY-ETHOXY)-ETHOXY]-ETHOXY}-ETHOXY)-ETHOXY]-ETHOXY}-ETHANOL (three-letter code: PE4) (formula: C₁₆H₃₄O₈).



Mol	Chain	Residues	Atoms	ZeroOcc	AltConf
6	A	1	Total C O 7 5 2	0	0

- Molecule 7 is SODIUM ION (three-letter code: NA) (formula: Na).

Mol	Chain	Residues	Atoms	ZeroOcc	AltConf
7	A	1	Total Na 1 1	0	0
7	B	1	Total Na 1 1	0	0

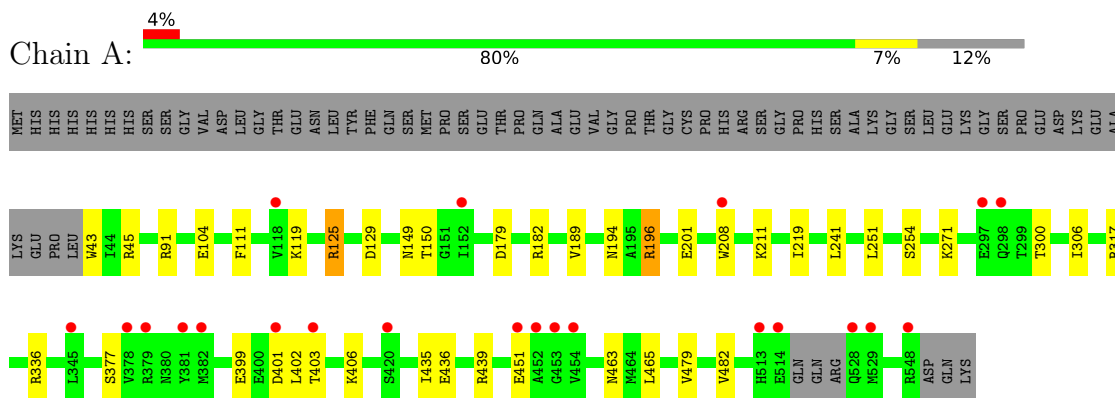
- Molecule 8 is water.

Mol	Chain	Residues	Atoms	ZeroOcc	AltConf
8	A	191	Total O 191 191	0	0
8	B	103	Total O 103 103	0	0

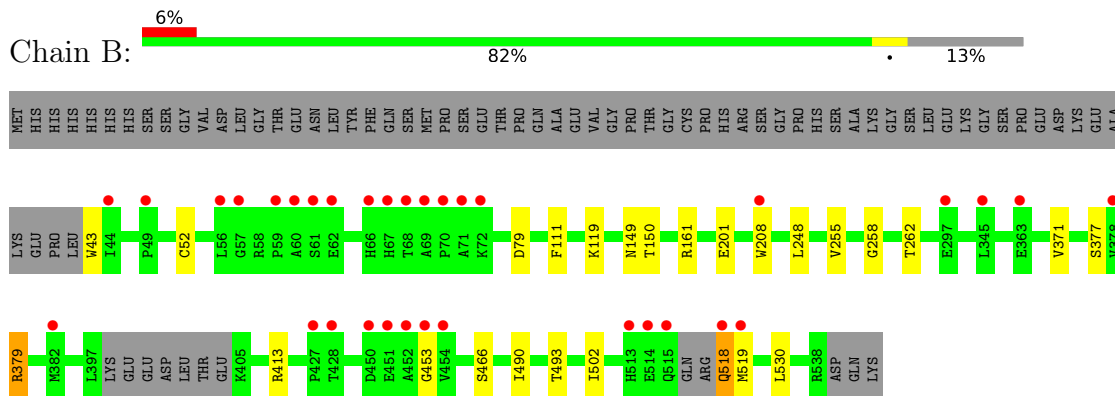
3 Residue-property plots [i](#)

These plots are drawn for all protein, RNA, DNA and oligosaccharide chains in the entry. The first graphic for a chain summarises the proportions of the various outlier classes displayed in the second graphic. The second graphic shows the sequence view annotated by issues in geometry and electron density. Residues are color-coded according to the number of geometric quality criteria for which they contain at least one outlier: green = 0, yellow = 1, orange = 2 and red = 3 or more. A red dot above a residue indicates a poor fit to the electron density ($RSRZ > 2$). Stretches of 2 or more consecutive residues without any outlier are shown as a green connector. Residues present in the sample, but not in the model, are shown in grey.

- Molecule 1: CYSTATHIONINE BETA-SYNTASE



- Molecule 1: CYSTATHIONINE BETA-SYNTASE



4 Data and refinement statistics

Property	Value	Source
Space group	P 21 21 21	Depositor
Cell constants a, b, c, α , β , γ	70.26Å 116.19Å 167.99Å 90.00° 90.00° 90.00°	Depositor
Resolution (Å)	95.56 – 2.00 48.89 – 2.00	Depositor EDS
% Data completeness (in resolution range)	99.6 (95.56-2.00) 99.7 (48.89-2.00)	Depositor EDS
R_{merge}	0.07	Depositor
R_{sym}	(Not available)	Depositor
$\langle I/\sigma(I) \rangle$ ¹	1.98 (at 2.00Å)	Xtrriage
Refinement program	REFMAC 5.8.0049	Depositor
R, R_{free}	0.174 , 0.201 0.184 , 0.208	Depositor DCC
R_{free} test set	4662 reflections (5.00%)	wwPDB-VP
Wilson B-factor (Å ²)	34.7	Xtrriage
Anisotropy	0.270	Xtrriage
Bulk solvent k_{sol} (e/Å ³), B_{sol} (Å ²)	0.35 , 43.3	EDS
L-test for twinning ²	$\langle L \rangle = 0.48$, $\langle L^2 \rangle = 0.31$	Xtrriage
Estimated twinning fraction	No twinning to report.	Xtrriage
F_o, F_c correlation	0.96	EDS
Total number of atoms	8055	wwPDB-VP
Average B, all atoms (Å ²)	43.0	wwPDB-VP

Xtrriage's analysis on translational NCS is as follows: *The largest off-origin peak in the Patterson function is 3.00% of the height of the origin peak. No significant pseudotranslation is detected.*

¹Intensities estimated from amplitudes.

²Theoretical values of $\langle |L| \rangle$, $\langle L^2 \rangle$ for acentric reflections are 0.5, 0.333 respectively for untwinned datasets, and 0.375, 0.2 for perfectly twinned datasets.

5 Model quality [i](#)

5.1 Standard geometry [i](#)

Bond lengths and bond angles in the following residue types are not validated in this section: NA, ACT, EDO, PLP, PE4, HEM

The Z score for a bond length (or angle) is the number of standard deviations the observed value is removed from the expected value. A bond length (or angle) with $|Z| > 5$ is considered an outlier worth inspection. RMSZ is the root-mean-square of all Z scores of the bond lengths (or angles).

Mol	Chain	Bond lengths		Bond angles	
		RMSZ	# Z >5	RMSZ	# Z >5
1	A	0.53	0/3905	0.76	6/5295 (0.1%)
1	B	0.46	0/3846	0.66	1/5216 (0.0%)
All	All	0.50	0/7751	0.71	7/10511 (0.1%)

There are no bond length outliers.

All (7) bond angle outliers are listed below:

Mol	Chain	Res	Type	Atoms	Z	Observed(°)	Ideal(°)
1	A	125	ARG	NE-CZ-NH2	-10.30	115.15	120.30
1	A	125	ARG	NE-CZ-NH1	9.32	124.96	120.30
1	A	336	ARG	NE-CZ-NH2	-7.87	116.37	120.30
1	A	196	ARG	NE-CZ-NH2	-7.25	116.67	120.30
1	A	317	ARG	NE-CZ-NH2	-6.37	117.11	120.30
1	A	196	ARG	NE-CZ-NH1	6.11	123.36	120.30
1	B	379	ARG	NE-CZ-NH1	5.09	122.85	120.30

There are no chirality outliers.

There are no planarity outliers.

5.2 Too-close contacts [i](#)

In the following table, the Non-H and H(model) columns list the number of non-hydrogen atoms and hydrogen atoms in the chain respectively. The H(added) column lists the number of hydrogen atoms added and optimized by MolProbity. The Clashes column lists the number of clashes within the asymmetric unit, whereas Symm-Clashes lists symmetry-related clashes.

Mol	Chain	Non-H	H(model)	H(added)	Clashes	Symm-Clashes
1	A	3822	0	3856	32	0
1	B	3766	0	3778	22	0

Continued on next page...

Continued from previous page...

Mol	Chain	Non-H	H(model)	H(added)	Clashes	Symm-Clashes
2	A	43	0	30	3	0
2	B	43	0	30	4	0
3	A	4	0	3	4	0
3	B	16	0	12	13	0
4	A	15	0	6	1	0
4	B	15	0	6	3	0
5	A	24	0	36	5	0
5	B	4	0	6	1	0
6	A	7	0	6	2	0
7	A	1	0	0	0	0
7	B	1	0	0	0	0
8	A	191	0	0	8	0
8	B	103	0	0	4	0
All	All	8055	0	7769	66	0

The all-atom clashscore is defined as the number of clashes found per 1000 atoms (including hydrogen atoms). The all-atom clashscore for this structure is 4.

All (66) close contacts within the same asymmetric unit are listed below, sorted by their clash magnitude.

Atom-1	Atom-2	Interatomic distance (Å)	Clash overlap (Å)
1:B:379:ARG:NH2	8:B:2011:HOH:O	1.81	1.09
1:B:119:LYS:HZ3	4:B:1543:PLP:C4A	1.81	0.90
1:B:150:THR:H	3:B:1540:ACT:H1	1.40	0.87
1:A:150:THR:H	3:A:1550:ACT:H1	1.41	0.85
5:A:1554:EDO:O2	3:B:1542:ACT:H2	1.83	0.79
8:A:2190:HOH:O	3:B:1542:ACT:H1	1.83	0.77
1:B:530:LEU:HA	3:B:1542:ACT:H3	1.66	0.74
1:A:194[B]:ASN:ND2	8:A:2082:HOH:O	2.19	0.74
1:B:201:GLU:OE1	8:B:2041:HOH:O	2.06	0.72
1:A:201:GLU:OE1	8:A:2086:HOH:O	2.07	0.72
2:A:1549:HEM:HMC2	2:A:1549:HEM:HBC2	1.74	0.69
1:A:91:ARG:NH1	1:A:104:GLU:OE2	2.26	0.69
1:A:194[B]:ASN:CG	8:A:2082:HOH:O	2.32	0.67
2:B:1539:HEM:HBC2	2:B:1539:HEM:HMC2	1.75	0.67
5:A:1554:EDO:H11	3:B:1546:ACT:CH3	2.28	0.64
1:A:208[A]:TRP:CZ3	1:A:211:LYS:HE2	2.33	0.63
3:A:1550:ACT:H3	8:A:2047:HOH:O	2.00	0.60
1:A:43:TRP:CZ3	1:A:45[A]:ARG:HG2	2.38	0.59
1:B:530:LEU:CA	3:B:1542:ACT:H3	2.32	0.58
1:A:211:LYS:HD3	1:A:219:ILE:HG13	1.85	0.58

Continued on next page...

Continued from previous page...

Atom-1	Atom-2	Interatomic distance (Å)	Clash overlap (Å)
1:A:194[A]:ASN:OD1	1:A:300:THR:CG2	2.52	0.57
1:B:119:LYS:NZ	3:B:1540:ACT:H2	2.21	0.56
1:A:403:THR:HA	1:A:406:LYS:HG2	1.88	0.56
1:A:125:ARG:HD2	1:A:129:ASP:OD2	2.07	0.55
1:A:150:THR:H	3:A:1550:ACT:CH3	2.15	0.55
3:B:1540:ACT:H3	8:B:2019:HOH:O	2.07	0.55
1:B:111:PHE:HB2	1:B:377:SER:HB3	1.89	0.54
1:A:196:ARG:HD3	1:B:466:SER:OG	2.08	0.53
1:A:196:ARG:NH2	8:A:2084:HOH:O	2.29	0.53
1:A:439:ARG:HH21	6:A:1557:PE4:C6	2.22	0.53
2:B:1539:HEM:HMB1	2:B:1539:HEM:HBB2	1.89	0.52
1:A:111:PHE:HB2	1:A:377:SER:HB3	1.92	0.51
1:B:119:LYS:CE	4:B:1543:PLP:C4A	2.81	0.51
2:A:1549:HEM:HBC2	2:A:1549:HEM:CMC	2.40	0.51
1:A:479:VAL:HG22	8:A:2162:HOH:O	2.12	0.49
1:A:119:LYS:HG3	3:A:1550:ACT:H2	1.94	0.49
1:B:453:GLY:HA3	1:B:518:GLN:OE1	2.13	0.48
1:B:262:THR:HG21	5:B:1544:EDO:H22	1.95	0.48
5:A:1554:EDO:C1	3:B:1546:ACT:CH3	2.91	0.48
1:A:194[A]:ASN:OD1	1:A:300:THR:HG22	2.12	0.48
1:A:403:THR:HA	1:A:406:LYS:CG	2.43	0.48
1:A:189:VAL:HG22	3:B:1546:ACT:H2	1.95	0.47
1:B:255:VAL:HG13	1:B:258:GLY:HA2	1.98	0.46
2:A:1549:HEM:HBB2	2:A:1549:HEM:HHC	1.97	0.46
1:A:435:ILE:HD12	1:A:465:LEU:HG	1.97	0.45
1:A:179:ASP:OD2	8:A:2074:HOH:O	2.21	0.45
1:B:79:ASP:OD2	1:B:161[B]:ARG:NH1	2.43	0.44
1:A:463:ASN:HB2	1:B:201:GLU:OE2	2.17	0.43
1:B:52:CYS:HA	2:B:1539:HEM:C1A	2.53	0.43
1:B:413:ARG:HD2	1:B:493:THR:O	2.19	0.43
1:A:399:GLU:HA	1:A:402:LEU:HB3	2.01	0.43
1:B:490:ILE:HD12	1:B:502:ILE:HD12	2.00	0.43
1:A:182:ARG:HD3	8:B:2096:HOH:O	2.19	0.42
1:A:451:GLU:H	1:A:451:GLU:CD	2.22	0.42
5:A:1554:EDO:O2	3:B:1542:ACT:CH3	2.59	0.42
1:A:436:GLU:HG2	6:A:1557:PE4:H31	2.00	0.42
1:B:43:TRP:N	1:B:208[B]:TRP:CZ2	2.88	0.42
1:B:150:THR:H	3:B:1540:ACT:CH3	2.22	0.42
1:A:482:VAL:O	1:A:482:VAL:HG12	2.20	0.42
1:A:241:LEU:HD13	1:A:271:LYS:HE3	2.02	0.42
2:B:1539:HEM:HBC2	2:B:1539:HEM:CMC	2.44	0.41

Continued on next page...

Continued from previous page...

Atom-1	Atom-2	Interatomic distance (Å)	Clash overlap (Å)
1:A:254:SER:HB2	1:A:306:ILE:HG21	2.02	0.41
1:B:248:LEU:HD13	1:B:371:VAL:HG23	2.01	0.41
1:A:149:ASN:ND2	4:A:1551:PLP:H2A1	2.36	0.41
5:A:1554:EDO:H11	3:B:1546:ACT:H1	2.01	0.40
1:B:149:ASN:ND2	4:B:1543:PLP:H2A1	2.37	0.40

There are no symmetry-related clashes.

5.3 Torsion angles [i](#)

5.3.1 Protein backbone [i](#)

In the following table, the Percentiles column shows the percent Ramachandran outliers of the chain as a percentile score with respect to all X-ray entries followed by that with respect to entries of similar resolution.

The Analysed column shows the number of residues for which the backbone conformation was analysed, and the total number of residues.

Mol	Chain	Analysed	Favoured	Allowed	Outliers	Percentiles	
1	A	494/563 (88%)	484 (98%)	10 (2%)	0	100	100
1	B	486/563 (86%)	475 (98%)	11 (2%)	0	100	100
All	All	980/1126 (87%)	959 (98%)	21 (2%)	0	100	100

There are no Ramachandran outliers to report.

5.3.2 Protein sidechains [i](#)

In the following table, the Percentiles column shows the percent sidechain outliers of the chain as a percentile score with respect to all X-ray entries followed by that with respect to entries of similar resolution.

The Analysed column shows the number of residues for which the sidechain conformation was analysed, and the total number of residues.

Mol	Chain	Analysed	Rotameric	Outliers	Percentiles	
1	A	412/476 (87%)	410 (100%)	2 (0%)	88	92
1	B	402/476 (84%)	400 (100%)	2 (0%)	88	92
All	All	814/952 (86%)	810 (100%)	4 (0%)	88	92

All (4) residues with a non-rotameric sidechain are listed below:

Mol	Chain	Res	Type
1	A	251	LEU
1	A	401	ASP
1	B	518	GLN
1	B	519	MET

Sometimes sidechains can be flipped to improve hydrogen bonding and reduce clashes. All (2) such sidechains are listed below:

Mol	Chain	Res	Type
1	A	66	HIS
1	B	222	GLN

5.3.3 RNA [i](#)

There are no RNA molecules in this entry.

5.4 Non-standard residues in protein, DNA, RNA chains [i](#)

There are no non-standard protein/DNA/RNA residues in this entry.

5.5 Carbohydrates [i](#)

There are no monosaccharides in this entry.

5.6 Ligand geometry [i](#)

Of 19 ligands modelled in this entry, 2 are monoatomic - leaving 17 for Mogul analysis.

In the following table, the Counts columns list the number of bonds (or angles) for which Mogul statistics could be retrieved, the number of bonds (or angles) that are observed in the model and the number of bonds (or angles) that are defined in the Chemical Component Dictionary. The Link column lists molecule types, if any, to which the group is linked. The Z score for a bond length (or angle) is the number of standard deviations the observed value is removed from the expected value. A bond length (or angle) with $|Z| > 2$ is considered an outlier worth inspection. RMSZ is the root-mean-square of all Z scores of the bond lengths (or angles).

Mol	Type	Chain	Res	Link	Bond lengths			Bond angles		
					Counts	RMSZ	$\# Z > 2$	Counts	RMSZ	$\# Z > 2$
6	PE4	A	1557	-	6,6,23	0.80	0	5,5,22	0.65	0
3	ACT	A	1550	-	3,3,3	1.56	0	3,3,3	0.76	0

Mol	Type	Chain	Res	Link	Bond lengths			Bond angles		
					Counts	RMSZ	# Z > 2	Counts	RMSZ	# Z > 2
5	EDO	A	1553	-	3,3,3	0.37	0	2,2,2	0.14	0
4	PLP	A	1551	1	15,15,16	2.20	4 (26%)	20,22,23	2.42	10 (50%)
3	ACT	B	1542	-	3,3,3	0.71	0	3,3,3	1.15	0
5	EDO	A	1552	-	3,3,3	0.51	0	2,2,2	0.28	0
4	PLP	B	1543	1	15,15,16	2.37	4 (26%)	20,22,23	2.47	11 (55%)
3	ACT	B	1546	-	3,3,3	0.84	0	3,3,3	1.11	0
5	EDO	A	1556	-	3,3,3	0.43	0	2,2,2	0.26	0
3	ACT	B	1541	-	3,3,3	0.76	0	3,3,3	0.77	0
2	HEM	B	1539	1	41,50,50	1.36	6 (14%)	45,82,82	1.81	14 (31%)
5	EDO	A	1554	-	3,3,3	0.36	0	2,2,2	0.35	0
5	EDO	B	1544	-	3,3,3	0.47	0	2,2,2	0.19	0
2	HEM	A	1549	1	41,50,50	1.39	5 (12%)	45,82,82	2.05	17 (37%)
5	EDO	A	1555	-	3,3,3	0.35	0	2,2,2	0.39	0
3	ACT	B	1540	-	3,3,3	1.17	0	3,3,3	0.59	0
5	EDO	A	1559	-	3,3,3	0.46	0	2,2,2	0.34	0

In the following table, the Chirals column lists the number of chiral outliers, the number of chiral centers analysed, the number of these observed in the model and the number defined in the Chemical Component Dictionary. Similar counts are reported in the Torsion and Rings columns. '-' means no outliers of that kind were identified.

Mol	Type	Chain	Res	Link	Chirals	Torsions	Rings
6	PE4	A	1557	-	-	3/4/4/21	-
5	EDO	A	1553	-	-	1/1/1/1	-
5	EDO	A	1552	-	-	0/1/1/1	-
4	PLP	A	1551	1	-	0/6/6/8	0/1/1/1
4	PLP	B	1543	1	-	1/6/6/8	0/1/1/1
5	EDO	A	1556	-	-	0/1/1/1	-
5	EDO	A	1554	-	-	1/1/1/1	-
2	HEM	B	1539	1	-	0/12/54/54	-
2	HEM	A	1549	1	-	3/12/54/54	-
5	EDO	A	1555	-	-	0/1/1/1	-
5	EDO	B	1544	-	-	1/1/1/1	-
5	EDO	A	1559	-	-	1/1/1/1	-

All (19) bond length outliers are listed below:

Mol	Chain	Res	Type	Atoms	Z	Observed(Å)	Ideal(Å)
4	B	1543	PLP	C5-C4	5.67	1.46	1.40
4	A	1551	PLP	C3-C2	4.71	1.45	1.40
2	A	1549	HEM	C1B-NB	-4.26	1.33	1.40

Continued on next page...

Continued from previous page...

Mol	Chain	Res	Type	Atoms	Z	Observed(Å)	Ideal(Å)
4	B	1543	PLP	C3-C2	4.11	1.45	1.40
4	A	1551	PLP	C4A-C4	-4.00	1.43	1.51
4	B	1543	PLP	C4A-C4	-3.89	1.43	1.51
4	A	1551	PLP	C3-C4	3.73	1.47	1.40
4	A	1551	PLP	C5-C4	3.65	1.44	1.40
2	B	1539	HEM	C1B-NB	-3.47	1.34	1.40
4	B	1543	PLP	C3-C4	3.23	1.46	1.40
2	B	1539	HEM	FE-NB	3.06	2.12	1.96
2	B	1539	HEM	C4D-ND	-2.99	1.35	1.40
2	A	1549	HEM	C3B-C4B	2.75	1.50	1.44
2	A	1549	HEM	C4D-ND	-2.58	1.35	1.40
2	B	1539	HEM	C3B-C4B	2.55	1.50	1.44
2	A	1549	HEM	FE-NB	2.50	2.09	1.96
2	A	1549	HEM	C1D-ND	-2.38	1.33	1.38
2	B	1539	HEM	CHB-C1B	2.12	1.40	1.35
2	B	1539	HEM	C4B-NB	-2.11	1.34	1.38

All (52) bond angle outliers are listed below:

Mol	Chain	Res	Type	Atoms	Z	Observed(°)	Ideal(°)
2	A	1549	HEM	C1B-NB-C4B	5.76	111.02	105.07
2	B	1539	HEM	C1B-NB-C4B	5.26	110.51	105.07
4	A	1551	PLP	C4A-C4-C5	-4.61	116.19	120.94
4	B	1543	PLP	C6-C5-C4	-4.15	114.89	118.16
4	B	1543	PLP	O4P-C5A-C5	4.10	117.17	109.35
4	B	1543	PLP	C3-C4-C5	4.02	123.08	118.74
4	A	1551	PLP	C6-N1-C2	4.02	126.61	119.17
2	B	1539	HEM	CHA-C4D-ND	3.96	129.27	124.38
4	A	1551	PLP	C6-C5-C4	-3.94	115.06	118.16
2	B	1539	HEM	CHC-C4B-NB	3.67	128.42	124.43
2	A	1549	HEM	CHB-C1B-NB	3.61	128.84	124.38
4	B	1543	PLP	C6-N1-C2	3.52	125.69	119.17
4	B	1543	PLP	C4-C3-C2	-3.40	115.04	120.07
4	A	1551	PLP	C3-C4-C5	3.30	122.31	118.74
4	A	1551	PLP	C5A-C5-C6	3.16	124.57	119.37
2	B	1539	HEM	CBD-CAD-C3D	-3.08	104.07	112.63
2	A	1549	HEM	CBD-CAD-C3D	-3.04	104.18	112.63
2	B	1539	HEM	CHD-C1D-ND	3.04	127.73	124.43
2	A	1549	HEM	CAB-C3B-C2B	-3.02	118.64	128.60
2	B	1539	HEM	CHA-C4D-C3D	-2.94	119.82	125.33
4	B	1543	PLP	C4A-C4-C5	-2.90	117.95	120.94
4	A	1551	PLP	C3-C2-N1	-2.90	117.03	120.77

Continued on next page...

Continued from previous page...

Mol	Chain	Res	Type	Atoms	Z	Observed(°)	Ideal(°)
2	A	1549	HEM	CHC-C4B-NB	2.79	127.46	124.43
4	A	1551	PLP	O3-C3-C2	2.76	123.50	117.49
2	B	1539	HEM	CAA-CBA-CGA	-2.71	106.17	113.76
4	B	1543	PLP	O3-C3-C2	2.70	123.39	117.49
4	A	1551	PLP	O4P-C5A-C5	2.68	114.46	109.35
2	A	1549	HEM	CHD-C1D-ND	2.65	127.31	124.43
2	A	1549	HEM	C4C-CHD-C1D	2.63	126.03	122.56
2	A	1549	HEM	O2D-CGD-CBD	2.63	122.49	114.03
2	A	1549	HEM	CMC-C2C-C3C	2.59	129.52	124.68
2	A	1549	HEM	CHA-C4D-C3D	-2.55	120.54	125.33
4	A	1551	PLP	C4-C3-C2	-2.55	116.31	120.07
2	A	1549	HEM	CHD-C1D-C2D	-2.47	121.12	124.98
2	A	1549	HEM	C2C-C3C-C4C	2.46	108.62	106.90
2	A	1549	HEM	CHA-C4D-ND	2.43	127.38	124.38
4	B	1543	PLP	O2P-P-O4P	-2.38	100.40	106.73
2	A	1549	HEM	C3C-C4C-NC	-2.35	106.50	110.94
2	A	1549	HEM	CMB-C2B-C1B	2.34	128.60	125.04
2	A	1549	HEM	CAB-C3B-C4B	2.33	135.32	124.47
2	B	1539	HEM	CMD-C2D-C1D	2.32	128.58	125.04
4	B	1543	PLP	O3P-P-O2P	2.26	116.26	107.64
4	B	1543	PLP	O2P-P-O1P	2.22	119.38	110.68
2	B	1539	HEM	CBA-CAA-C2A	2.19	116.36	112.62
2	B	1539	HEM	O2A-CGA-O1A	-2.14	117.97	123.30
2	B	1539	HEM	CMC-C2C-C3C	2.12	128.64	124.68
2	B	1539	HEM	C3C-C4C-NC	-2.10	106.98	110.94
2	A	1549	HEM	O2A-CGA-CBA	2.09	120.75	114.03
2	B	1539	HEM	CHD-C1D-C2D	-2.07	121.74	124.98
4	A	1551	PLP	C2A-C2-N1	2.05	121.68	117.67
2	B	1539	HEM	C4B-C3B-C2B	-2.05	105.49	107.11
4	B	1543	PLP	C5A-C5-C6	2.04	122.72	119.37

There are no chirality outliers.

All (11) torsion outliers are listed below:

Mol	Chain	Res	Type	Atoms
4	B	1543	PLP	C6-C5-C5A-O4P
2	A	1549	HEM	C4B-C3B-CAB-CBB
6	A	1557	PE4	C6-C5-O3-C4
6	A	1557	PE4	C4-C3-O2-C2
5	A	1553	EDO	O1-C1-C2-O2
6	A	1557	PE4	C3-C4-O3-C5
5	A	1554	EDO	O1-C1-C2-O2

Continued on next page...

Continued from previous page...

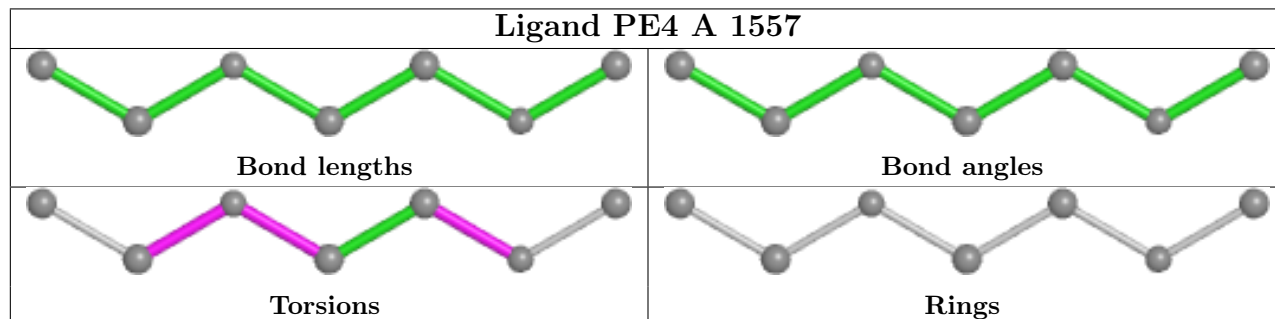
Mol	Chain	Res	Type	Atoms
2	A	1549	HEM	CAA-CBA-CGA-O2A
5	B	1544	EDO	O1-C1-C2-O2
2	A	1549	HEM	CAA-CBA-CGA-O1A
5	A	1559	EDO	O1-C1-C2-O2

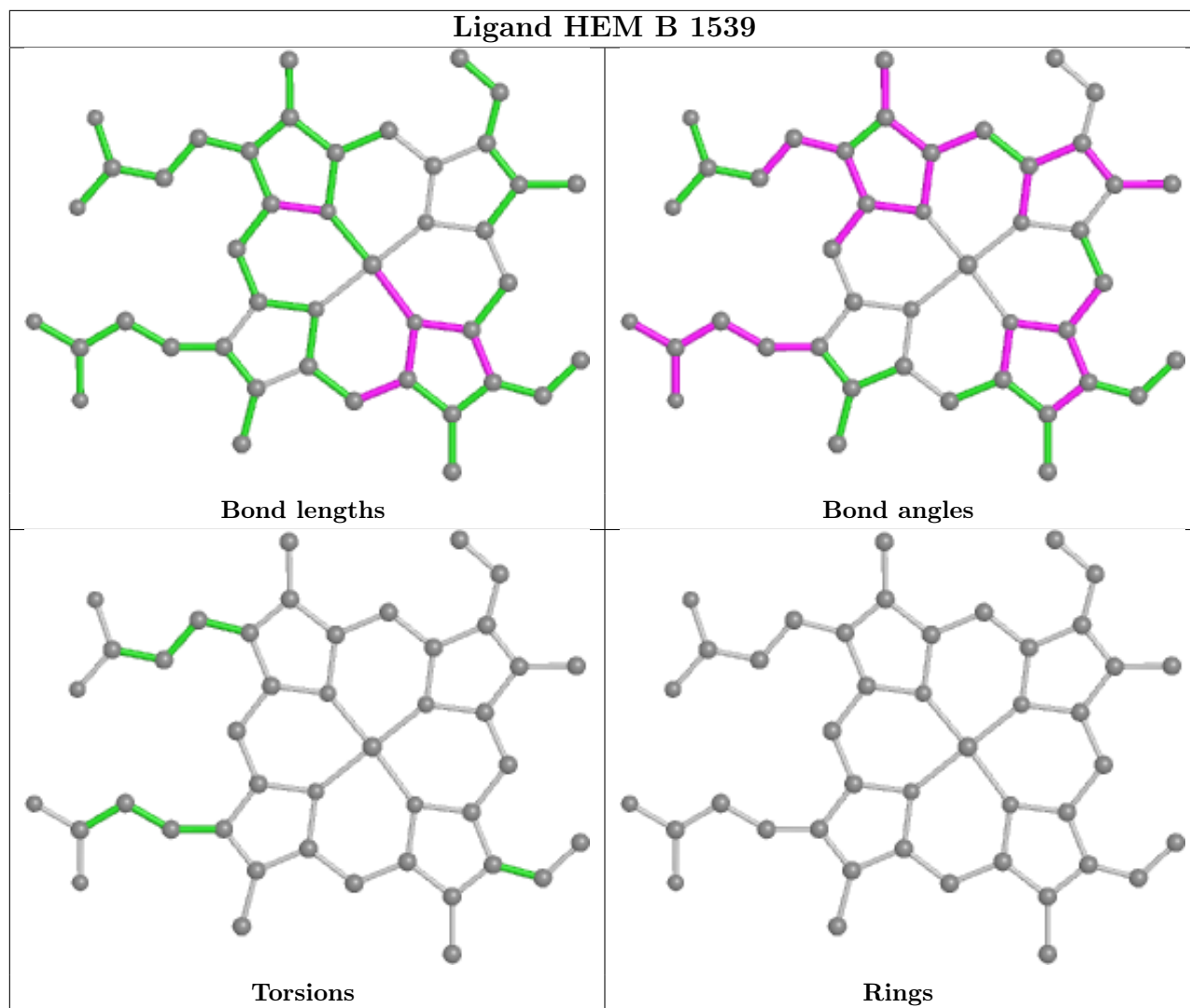
There are no ring outliers.

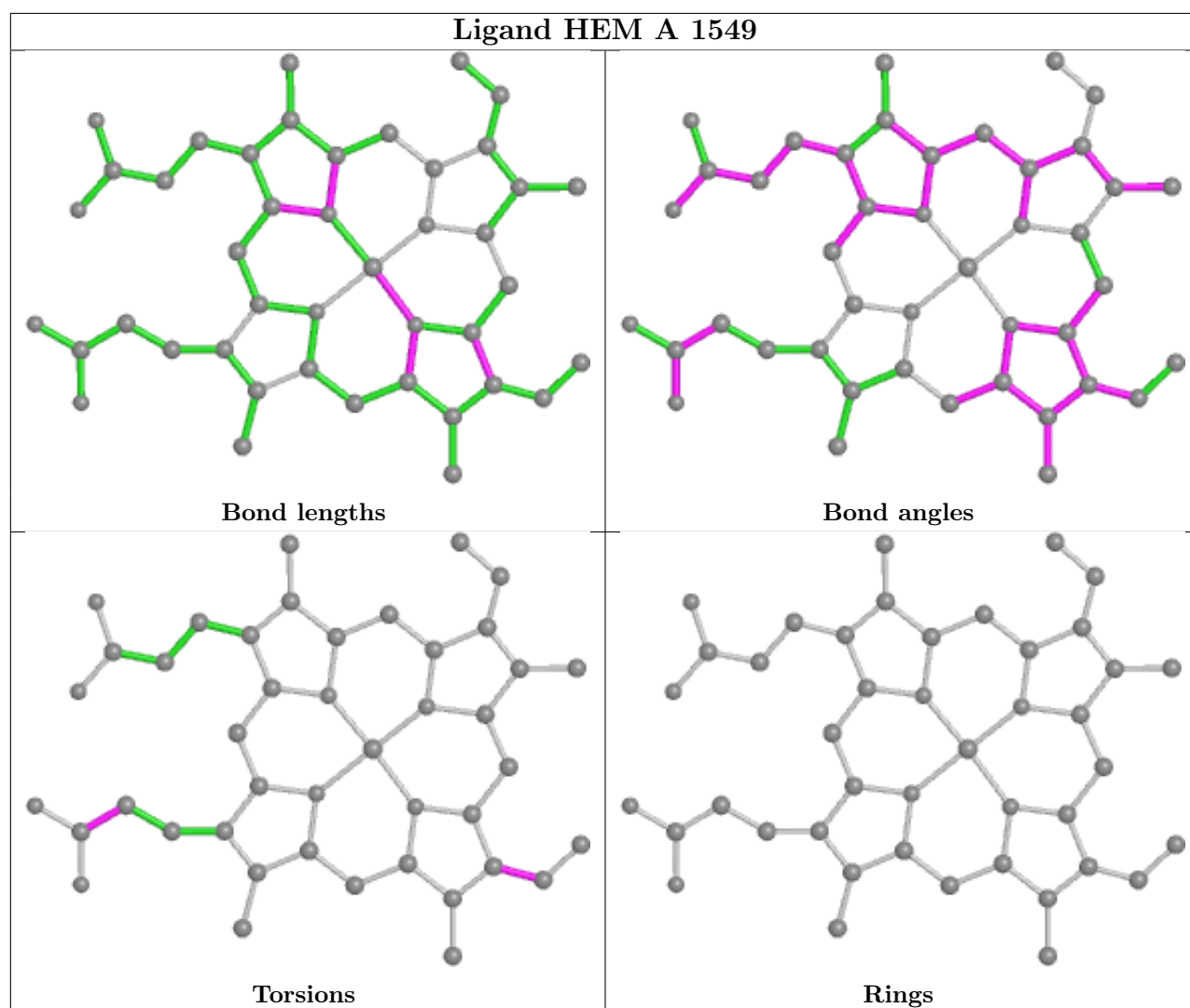
11 monomers are involved in 31 short contacts:

Mol	Chain	Res	Type	Clashes	Symm-Clashes
6	A	1557	PE4	2	0
3	A	1550	ACT	4	0
4	A	1551	PLP	1	0
3	B	1542	ACT	5	0
4	B	1543	PLP	3	0
3	B	1546	ACT	4	0
2	B	1539	HEM	4	0
5	A	1554	EDO	5	0
5	B	1544	EDO	1	0
2	A	1549	HEM	3	0
3	B	1540	ACT	4	0

The following is a two-dimensional graphical depiction of Mogul quality analysis of bond lengths, bond angles, torsion angles, and ring geometry for all instances of the Ligand of Interest. In addition, ligands with molecular weight > 250 and outliers as shown on the validation Tables will also be included. For torsion angles, if less than 5% of the Mogul distribution of torsion angles is within 10 degrees of the torsion angle in question, then that torsion angle is considered an outlier. Any bond that is central to one or more torsion angles identified as an outlier by Mogul will be highlighted in the graph. For rings, the root-mean-square deviation (RMSD) between the ring in question and similar rings identified by Mogul is calculated over all ring torsion angles. If the average RMSD is greater than 60 degrees and the minimal RMSD between the ring in question and any Mogul-identified rings is also greater than 60 degrees, then that ring is considered an outlier. The outliers are highlighted in purple. The color gray indicates Mogul did not find sufficient equivalents in the CSD to analyse the geometry.







5.7 Other polymers [i](#)

There are no such residues in this entry.

5.8 Polymer linkage issues [i](#)

There are no chain breaks in this entry.

6 Fit of model and data [i](#)

6.1 Protein, DNA and RNA chains [i](#)

In the following table, the column labelled ‘#RSRZ > 2’ contains the number (and percentage) of RSRZ outliers, followed by percent RSRZ outliers for the chain as percentile scores relative to all X-ray entries and entries of similar resolution. The OWAB column contains the minimum, median, 95th percentile and maximum values of the occupancy-weighted average B-factor per residue. The column labelled ‘Q < 0.9’ lists the number of (and percentage) of residues with an average occupancy less than 0.9.

Mol	Chain	Analysed	<RSRZ>	#RSRZ>2	OWAB(Å ²)	Q<0.9
1	A	493/563 (87%)	0.16	22 (4%) 33 32	24, 36, 64, 107	0
1	B	487/563 (86%)	0.24	33 (6%) 17 16	26, 45, 76, 126	0
All	All	980/1126 (87%)	0.20	55 (5%) 24 23	24, 40, 74, 126	0

All (55) RSRZ outliers are listed below:

Mol	Chain	Res	Type	RSRZ
1	B	71	ALA	8.0
1	B	70	PRO	8.0
1	B	60	ALA	5.6
1	B	69	ALA	5.5
1	B	61	SER	4.9
1	B	68	THR	4.1
1	A	548	ARG	4.0
1	B	515	GLN	4.0
1	B	297	GLU	3.8
1	B	72	LYS	3.8
1	B	518	GLN	3.7
1	A	403	THR	3.7
1	A	513	HIS	3.6
1	B	66	HIS	3.6
1	B	513	HIS	3.4
1	A	452	ALA	3.3
1	B	59	PRO	3.3
1	B	452	ALA	3.3
1	B	451	GLU	3.3
1	A	451	GLU	3.2
1	B	57	GLY	3.1
1	A	528	GLN	3.1
1	A	454	VAL	3.1
1	B	519	MET	3.0

Continued on next page...

Continued from previous page...

Mol	Chain	Res	Type	RSRZ
1	A	297	GLU	3.0
1	B	56	LEU	3.0
1	A	529	MET	2.9
1	A	514	GLU	2.9
1	B	62	GLU	2.8
1	A	152	ILE	2.8
1	A	378	VAL	2.7
1	B	514	GLU	2.7
1	B	428	THR	2.7
1	B	363	GLU	2.6
1	A	453	GLY	2.6
1	B	453	GLY	2.6
1	B	450	ASP	2.5
1	A	381	TYR	2.5
1	B	44	ILE	2.5
1	A	401	ASP	2.5
1	A	379	ARG	2.4
1	A	208[A]	TRP	2.3
1	B	49	PRO	2.3
1	B	427	PRO	2.3
1	A	420	SER	2.3
1	B	345	LEU	2.2
1	B	67	HIS	2.2
1	B	454	VAL	2.2
1	B	382	MET	2.2
1	A	118	VAL	2.2
1	A	345	LEU	2.1
1	B	378	VAL	2.1
1	A	382	MET	2.1
1	A	298	GLN	2.0
1	B	208[A]	TRP	2.0

6.2 Non-standard residues in protein, DNA, RNA chains [i](#)

There are no non-standard protein/DNA/RNA residues in this entry.

6.3 Carbohydrates [i](#)

There are no monosaccharides in this entry.

6.4 Ligands

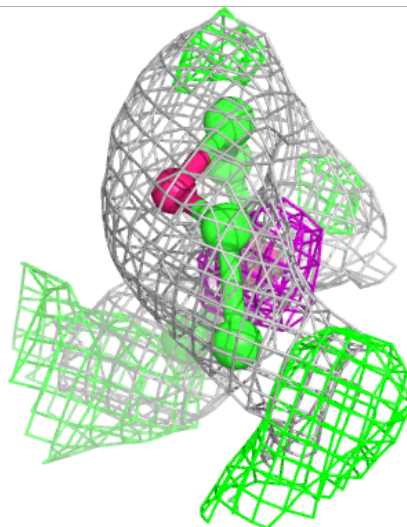
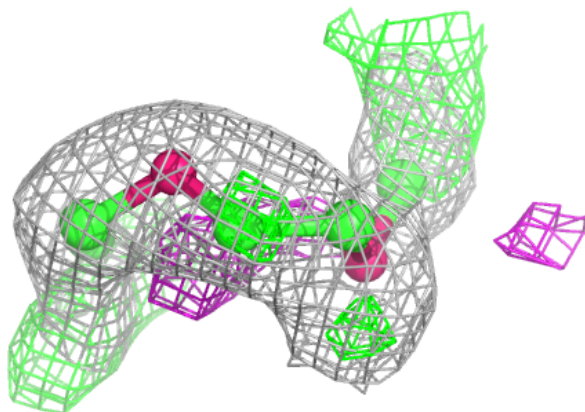
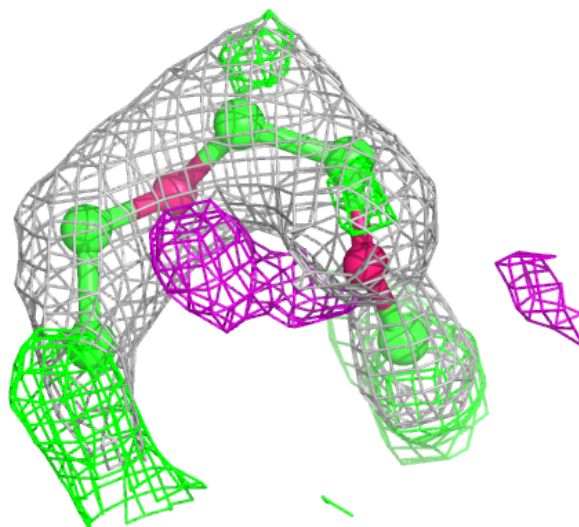
In the following table, the Atoms column lists the number of modelled atoms in the group and the number defined in the chemical component dictionary. The B-factors column lists the minimum, median, 95th percentile and maximum values of B factors of atoms in the group. The column labelled 'Q< 0.9' lists the number of atoms with occupancy less than 0.9.

Mol	Type	Chain	Res	Atoms	RSCC	RSR	B-factors(Å ²)	Q<0.9
6	PE4	A	1557	7/24	0.67	0.24	50,56,63,66	0
5	EDO	A	1559	4/4	0.78	0.37	20,20,20,20	0
3	ACT	B	1546	4/4	0.86	0.37	42,64,65,67	0
5	EDO	A	1553	4/4	0.88	0.19	34,46,47,49	0
3	ACT	B	1540	4/4	0.90	0.19	29,34,39,47	0
3	ACT	B	1541	4/4	0.90	0.16	52,53,55,56	0
3	ACT	A	1550	4/4	0.91	0.27	24,28,29,42	0
5	EDO	A	1555	4/4	0.91	0.28	54,54,55,58	0
2	HEM	B	1539	43/43	0.92	0.24	48,60,71,74	0
5	EDO	B	1544	4/4	0.93	0.19	51,53,53,57	0
5	EDO	A	1556	4/4	0.93	0.17	41,45,47,47	0
5	EDO	A	1554	4/4	0.94	0.15	44,45,47,47	0
5	EDO	A	1552	4/4	0.94	0.15	43,43,45,45	0
3	ACT	B	1542	4/4	0.94	0.18	57,62,62,64	0
2	HEM	A	1549	43/43	0.96	0.13	26,33,46,60	0
4	PLP	B	1543	15/16	0.98	0.13	29,32,34,35	0
4	PLP	A	1551	15/16	0.99	0.17	23,26,28,31	0
7	NA	A	1558	1/1	0.99	0.33	28,28,28,28	0
7	NA	B	1545	1/1	0.99	0.27	34,34,34,34	0

The following is a graphical depiction of the model fit to experimental electron density of all instances of the Ligand of Interest. In addition, ligands with molecular weight > 250 and outliers as shown on the geometry validation Tables will also be included. Each fit is shown from different orientation to approximate a three-dimensional view.

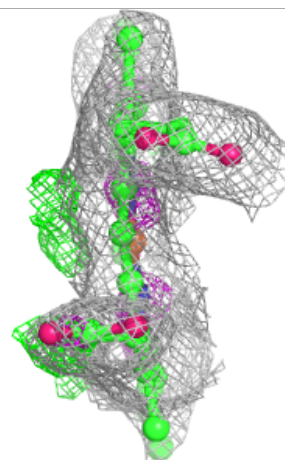
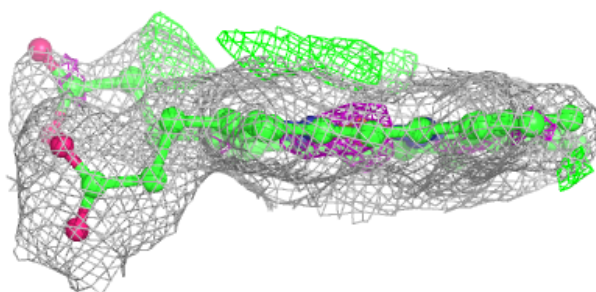
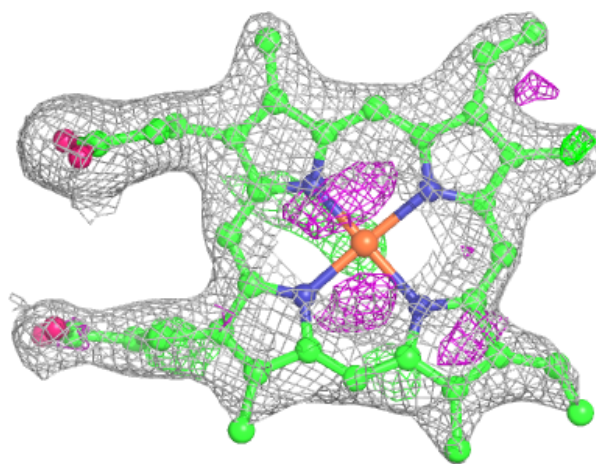
Electron density around PE4 A 1557:

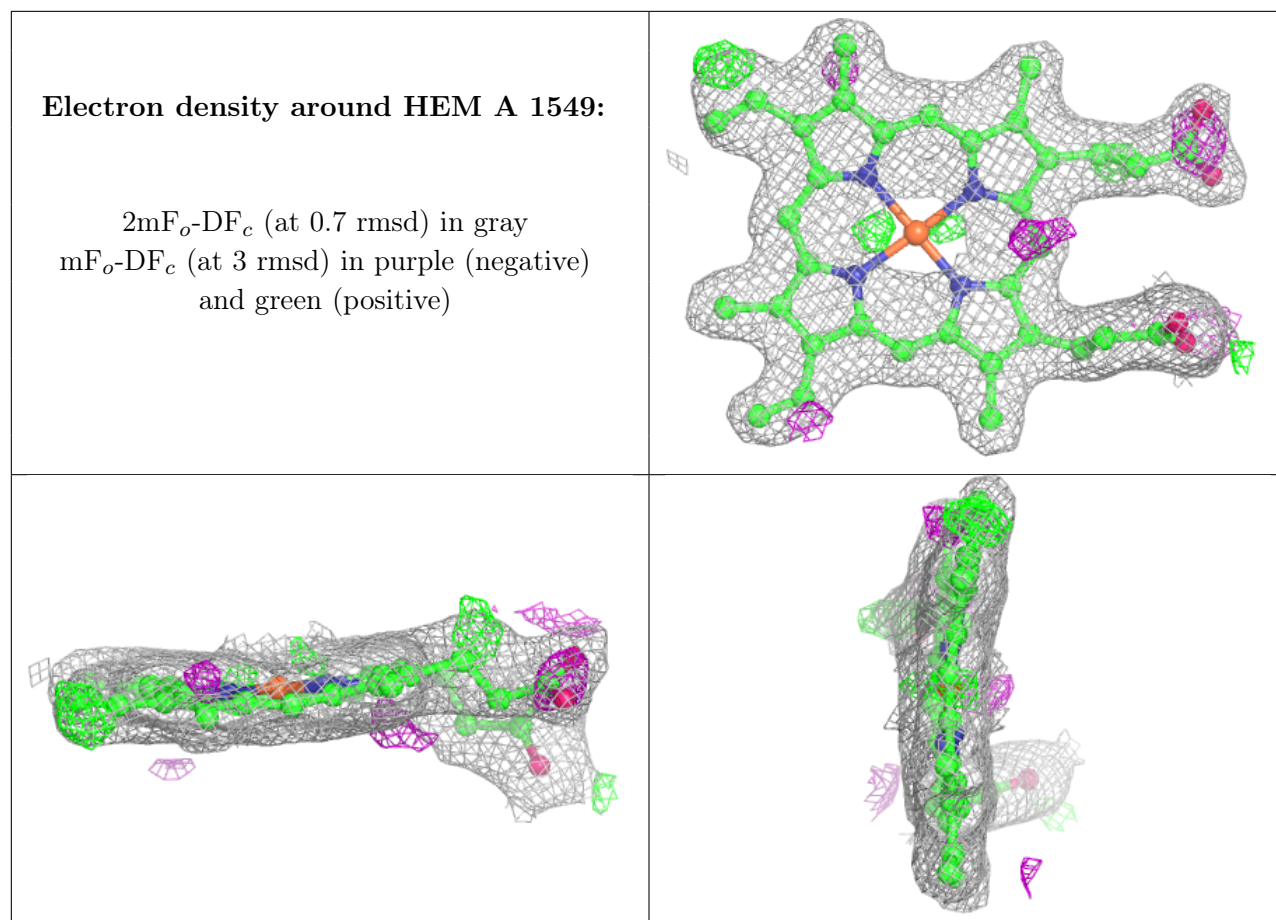
$2mF_o-DF_c$ (at 0.7 rmsd) in gray
 mF_o-DF_c (at 3 rmsd) in purple (negative)
and green (positive)



Electron density around HEM B 1539:

$2mF_o-DF_c$ (at 0.7 rmsd) in gray
 mF_o-DF_c (at 3 rmsd) in purple (negative)
and green (positive)





6.5 Other polymers [i](#)

There are no such residues in this entry.