



# Full wwPDB X-ray Structure Validation Report ⓘ

Oct 13, 2024 – 08:47 am BST

PDB ID : 4AY8  
Title : SeMet-derivative of a methyltransferase from *M. mazei*  
Authors : Hoepfner, A.; Thomas, F.; Rueppel, A.; Hensel, R.; Blankenfeldt, W.; Bayer, P.; Faust, A.  
Deposited on : 2012-06-18  
Resolution : 2.10 Å (reported)

This is a Full wwPDB X-ray Structure Validation Report for a publicly released PDB entry.

We welcome your comments at [validation@mail.wwpdb.org](mailto:validation@mail.wwpdb.org)

A user guide is available at

<https://www.wwpdb.org/validation/2017/XrayValidationReportHelp>

with specific help available everywhere you see the ⓘ symbol.

The types of validation reports are described at

<http://www.wwpdb.org/validation/2017/FAQs#types>.

---

The following versions of software and data (see [references ⓘ](#)) were used in the production of this report:

MolProbity : 4.02b-467  
Mogul : 1.8.4, CSD as541be (2020)  
Xtriage (Phenix) : 1.13  
EDS : 3.0  
Percentile statistics : 20231227.v01 (using entries in the PDB archive December 27th 2023)  
CCP4 : 9.0.003 (Gargrove)  
Density-Fitness : 1.0.11  
Ideal geometry (proteins) : Engh & Huber (2001)  
Ideal geometry (DNA, RNA) : Parkinson et al. (1996)  
Validation Pipeline (wwPDB-VP) : 2.39

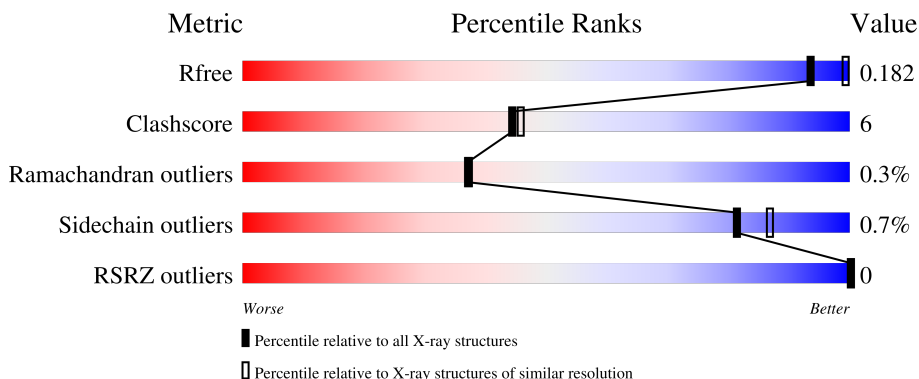
# 1 Overall quality at a glance

The following experimental techniques were used to determine the structure:

*X-RAY DIFFRACTION*



The reported resolution of this entry is 2.10 Å.

Percentile scores (ranging between 0-100) for global validation metrics of the entry are shown in the following graphic. The table shows the number of entries on which the scores are based.



Metric	Whole archive (#Entries)	Similar resolution (#Entries, resolution range(Å))
$R_{free}$	164625	6234 (2.10-2.10)
Clashscore	180529	6893 (2.10-2.10)
Ramachandran outliers	177936	6839 (2.10-2.10)
Sidechain outliers	177891	6840 (2.10-2.10)
RSRZ outliers	164620	6234 (2.10-2.10)

The table below summarises the geometric issues observed across the polymeric chains and their fit to the electron density. The red, orange, yellow and green segments of the lower bar indicate the fraction of residues that contain outliers for  $\geq 3$ , 2, 1 and 0 types of geometric quality criteria respectively. A grey segment represents the fraction of residues that are not modelled. The numeric value for each fraction is indicated below the corresponding segment, with a dot representing fractions  $\leq 5\%$ . The upper red bar (where present) indicates the fraction of residues that have poor fit to the electron density. The numeric value is given above the bar.

Mol	Chain	Length	Quality of chain
1	A	348	 86% 11%
1	B	348	 88% 10%

The following table lists non-polymeric compounds, carbohydrate monomers and non-standard residues in protein, DNA, RNA chains that are outliers for geometric or electron-density-fit criteria:

Mol	Type	Chain	Res	Chirality	Geometry	Clashes	Electron density
5	GOL	B	700	-	-	X	-

## 2 Entry composition

There are 6 unique types of molecules in this entry. The entry contains 5455 atoms, of which 0 are hydrogens and 0 are deuteriums.

In the tables below, the ZeroOcc column contains the number of atoms modelled with zero occupancy, the AltConf column contains the number of residues with at least one atom in alternate conformation and the Trace column contains the number of residues modelled with at most 2 atoms.

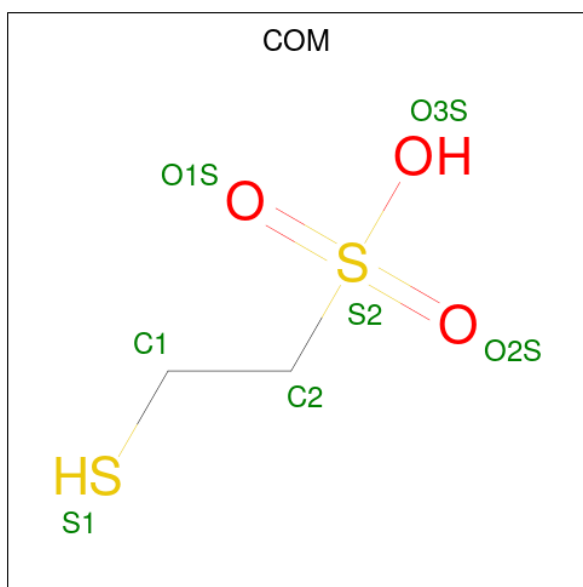
- Molecule 1 is a protein called METHYLCOBALAMIN\; COENZYME M METHYLTRANSFERASE.

Mol	Chain	Residues	Atoms						ZeroOcc	AltConf	Trace
			Total	C	N	O	S	Se			
1	A	340	2525	1602	421	485	6	11	0	0	0
1	B	340	2525	1602	421	485	6	11	0	0	0

There are 12 discrepancies between the modelled and reference sequences:

Chain	Residue	Modelled	Actual	Comment	Reference
A	-5	HIS	-	expression tag	UNP Q8PXZ6
A	-4	HIS	-	expression tag	UNP Q8PXZ6
A	-3	HIS	-	expression tag	UNP Q8PXZ6
A	-2	HIS	-	expression tag	UNP Q8PXZ6
A	-1	HIS	-	expression tag	UNP Q8PXZ6
A	0	HIS	-	expression tag	UNP Q8PXZ6
B	-5	HIS	-	expression tag	UNP Q8PXZ6
B	-4	HIS	-	expression tag	UNP Q8PXZ6
B	-3	HIS	-	expression tag	UNP Q8PXZ6
B	-2	HIS	-	expression tag	UNP Q8PXZ6
B	-1	HIS	-	expression tag	UNP Q8PXZ6
B	0	HIS	-	expression tag	UNP Q8PXZ6

- Molecule 2 is 1-THIOETHANESULFONIC ACID (three-letter code: COM) (formula: C<sub>2</sub>H<sub>6</sub>O<sub>3</sub>S<sub>2</sub>).

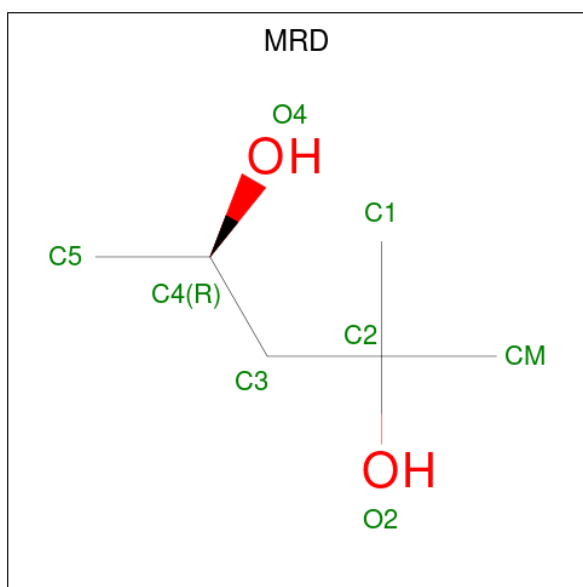


Mol	Chain	Residues	Atoms				ZeroOcc	AltConf
2	A	1	Total	C	O	S	0	0
			7	2	3	2		
2	B	1	Total	C	O	S	0	0
			7	2	3	2		

- Molecule 3 is ZINC ION (three-letter code: ZN) (formula: Zn).

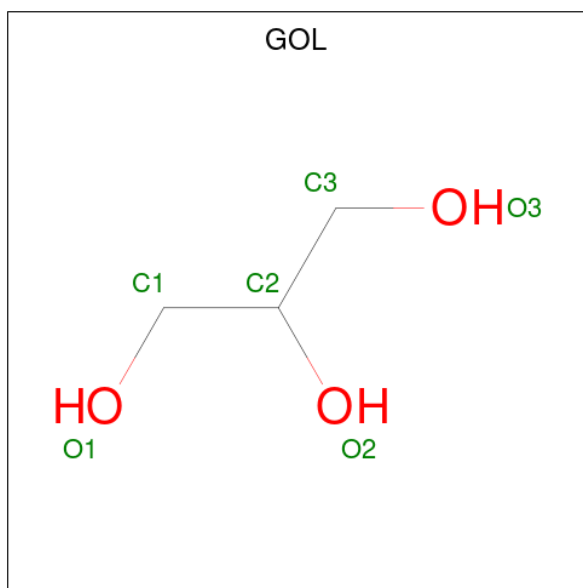
Mol	Chain	Residues	Atoms		ZeroOcc	AltConf
3	A	1	Total	Zn	0	0
			1	1		
3	B	1	Total	Zn	0	0
			1	1		

- Molecule 4 is (4R)-2-METHYLPENTANE-2,4-DIOL (three-letter code: MRD) (formula: C<sub>6</sub>H<sub>14</sub>O<sub>2</sub>).



Mol	Chain	Residues	Atoms			ZeroOcc	AltConf
4	A	1	Total	C	O	0	0
			8	6	2		

- Molecule 5 is GLYCEROL (three-letter code: GOL) (formula:  $C_3H_8O_3$ ).



Mol	Chain	Residues	Atoms			ZeroOcc	AltConf
5	B	1	Total	C	O	0	0
			6	3	3		
5	B	1	Total	C	O	0	0
			6	3	3		


- Molecule 6 is water.

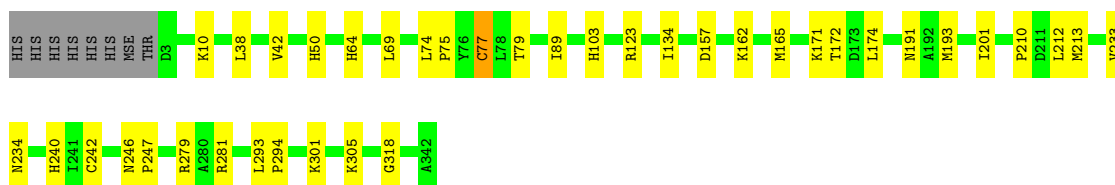
<b>Mol</b>	<b>Chain</b>	<b>Residues</b>	<b>Atoms</b>		<b>ZeroOcc</b>	<b>AltConf</b>
6	A	191	Total 191	O 191	0	0
6	B	178	Total 178	O 178	0	0

### 3 Residue-property plots [i](#)


These plots are drawn for all protein, RNA, DNA and oligosaccharide chains in the entry. The first graphic for a chain summarises the proportions of the various outlier classes displayed in the second graphic. The second graphic shows the sequence view annotated by issues in geometry and electron density. Residues are color-coded according to the number of geometric quality criteria for which they contain at least one outlier: green = 0, yellow = 1, orange = 2 and red = 3 or more. A red dot above a residue indicates a poor fit to the electron density ( $RSRZ > 2$ ). Stretches of 2 or more consecutive residues without any outlier are shown as a green connector. Residues present in the sample, but not in the model, are shown in grey.

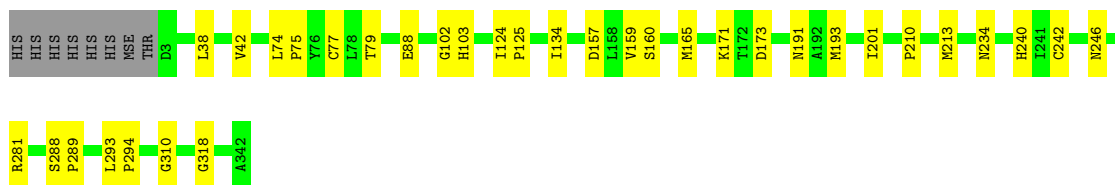
- Molecule 1: METHYLCOBALAMIN\ : COENZYME M METHYLTRANSFERASE

Chain A:  86% 11%



- Molecule 1: METHYLCOBALAMIN\ : COENZYME M METHYLTRANSFERASE

Chain B:  88% 10%





## 4 Data and refinement statistics i

Property	Value	Source
Space group	P 32	Depositor
Cell constants a, b, c, $\alpha$ , $\beta$ , $\gamma$	125.21Å 125.21Å 38.88Å 90.00° 90.00° 120.00°	Depositor
Resolution (Å)	33.03 – 2.10 33.03 – 2.10	Depositor EDS
% Data completeness (in resolution range)	99.9 (33.03-2.10) 99.9 (33.03-2.10)	Depositor EDS
$R_{merge}$	0.07	Depositor
$R_{sym}$	(Not available)	Depositor
$\langle I/\sigma(I) \rangle$ <sup>1</sup>	3.71 (at 2.10Å)	Xtrriage
Refinement program	REFMAC 5.5.0109	Depositor
R, $R_{free}$	0.146 , 0.177 0.151 , 0.182	Depositor DCC
$R_{free}$ test set	1994 reflections (4.97%)	wwPDB-VP
Wilson B-factor (Å <sup>2</sup> )	11.7	Xtrriage
Anisotropy	0.050	Xtrriage
Bulk solvent $k_{sol}$ (e/Å <sup>3</sup> ), $B_{sol}$ (Å <sup>2</sup> )	0.37 , 20.3	EDS
L-test for twinning <sup>2</sup>	$\langle  L  \rangle = 0.49$ , $\langle L^2 \rangle = 0.33$	Xtrriage
Estimated twinning fraction	0.487 for -h,-k,l 0.025 for h,-h-k,-l 0.025 for -k,-h,-l	Xtrriage
$F_o, F_c$ correlation	0.97	EDS
Total number of atoms	5455	wwPDB-VP
Average B, all atoms (Å <sup>2</sup> )	10.0	wwPDB-VP

Xtrriage's analysis on translational NCS is as follows: *The largest off-origin peak in the Patterson function is 4.99% of the height of the origin peak. No significant pseudotranslation is detected.*

<sup>1</sup>Intensities estimated from amplitudes.

<sup>2</sup>Theoretical values of  $\langle |L| \rangle$ ,  $\langle L^2 \rangle$  for acentric reflections are 0.5, 0.333 respectively for untwinned datasets, and 0.375, 0.2 for perfectly twinned datasets.

## 5 Model quality [i](#)

### 5.1 Standard geometry [i](#)

Bond lengths and bond angles in the following residue types are not validated in this section: GOL, COM, MRD, CSD, ZN

The Z score for a bond length (or angle) is the number of standard deviations the observed value is removed from the expected value. A bond length (or angle) with  $|Z| > 5$  is considered an outlier worth inspection. RMSZ is the root-mean-square of all Z scores of the bond lengths (or angles).

Mol	Chain	Bond lengths		Bond angles	
		RMSZ	# Z  >5	RMSZ	# Z  >5
1	A	0.45	0/2549	0.60	1/3445 (0.0%)
1	B	0.44	0/2549	0.55	0/3445
All	All	0.44	0/5098	0.57	1/6890 (0.0%)

There are no bond length outliers.

All (1) bond angle outliers are listed below:

Mol	Chain	Res	Type	Atoms	Z	Observed(°)	Ideal(°)
1	A	279	ARG	NE-CZ-NH2	-6.32	117.14	120.30

There are no chirality outliers.

There are no planarity outliers.

### 5.2 Too-close contacts [i](#)

In the following table, the Non-H and H(model) columns list the number of non-hydrogen atoms and hydrogen atoms in the chain respectively. The H(added) column lists the number of hydrogen atoms added and optimized by MolProbity. The Clashes column lists the number of clashes within the asymmetric unit, whereas Symm-Clashes lists symmetry-related clashes.

Mol	Chain	Non-H	H(model)	H(added)	Clashes	Symm-Clashes
1	A	2525	0	2598	29	0
1	B	2525	0	2598	28	0
2	A	7	0	4	0	0
2	B	7	0	5	0	0
3	A	1	0	0	0	0
3	B	1	0	0	0	0
4	A	8	0	14	5	0
5	B	12	0	16	6	0

*Continued on next page...*

Continued from previous page...

Mol	Chain	Non-H	H(model)	H(added)	Clashes	Symm-Clashes
6	A	191	0	0	4	1
6	B	178	0	0	1	1
All	All	5455	0	5235	61	1

The all-atom clashscore is defined as the number of clashes found per 1000 atoms (including hydrogen atoms). The all-atom clashscore for this structure is 6.

All (61) close contacts within the same asymmetric unit are listed below, sorted by their clash magnitude.

Atom-1	Atom-2	Interatomic distance (Å)	Clash overlap (Å)
1:B:165:MSE:HG2	1:B:213:MSE:CE	1.61	1.29
4:A:800:MRD:H5C3	4:A:800:MRD:CM	1.62	1.27
1:B:165:MSE:CG	1:B:213:MSE:HE1	1.76	1.14
4:A:800:MRD:C5	4:A:800:MRD:HMC1	1.80	1.07
4:A:800:MRD:H5C3	4:A:800:MRD:HMC1	1.05	1.02
1:B:165:MSE:HG2	1:B:213:MSE:HE1	0.92	0.89
1:B:165:MSE:CG	1:B:213:MSE:CE	2.43	0.86
1:A:165:MSE:CE	1:A:212:LEU:O	2.29	0.81
4:A:800:MRD:H5C3	4:A:800:MRD:HMC3	1.63	0.80
1:B:173:ASP:H	5:B:700:GOL:H11	1.45	0.80
1:B:173:ASP:HB2	5:B:700:GOL:C1	2.14	0.78
1:A:193:MSE:HE3	1:A:201:ILE:HD12	1.65	0.78
1:B:191:ASN:HD21	1:B:234:ASN:H	1.36	0.73
1:A:165:MSE:HE3	1:A:212:LEU:O	1.89	0.72
1:B:77:CSD:OD1	1:B:79:THR:OG1	2.06	0.68
1:A:191:ASN:HD21	1:A:234:ASN:H	1.42	0.68
1:A:103:HIS:HD2	1:A:157:ASP:O	1.80	0.65
1:B:193:MSE:HE3	1:B:201:ILE:HD12	1.79	0.64
1:A:74:LEU:HD13	1:A:134:ILE:HD12	1.79	0.63
1:B:173:ASP:HB2	5:B:700:GOL:H11	1.79	0.62
1:A:10:LYS:NZ	6:A:2012:HOH:O	2.32	0.62
1:B:171:LYS:HA	5:B:700:GOL:H2	1.81	0.62
1:B:103:HIS:HD2	1:B:157:ASP:O	1.83	0.61
1:A:64:HIS:HD2	1:A:69:LEU:O	1.85	0.59
1:B:74:LEU:HD13	1:B:134:ILE:HD12	1.82	0.59
1:A:165:MSE:HE2	1:A:212:LEU:O	2.02	0.58
1:B:310:GLY:HA3	6:B:2146:HOH:O	2.04	0.57
1:A:74:LEU:HD13	1:A:134:ILE:CD1	2.34	0.57
1:A:50:HIS:HD2	6:A:2053:HOH:O	1.88	0.56
1:A:171:LYS:HE3	1:A:174:LEU:HD12	1.89	0.55
1:B:191:ASN:ND2	1:B:234:ASN:H	2.07	0.52

Continued on next page...

Continued from previous page...

Atom-1	Atom-2	Interatomic distance (Å)	Clash overlap (Å)
1:A:172:THR:N	4:A:800:MRD:H3C2	2.27	0.50
1:A:191:ASN:ND2	1:A:234:ASN:H	2.08	0.49
1:A:50:HIS:CD2	6:A:2053:HOH:O	2.65	0.49
1:A:293:LEU:HB3	1:A:294:PRO:HD3	1.95	0.49
1:B:74:LEU:HD13	1:B:134:ILE:CD1	2.43	0.48
1:A:301:LYS:O	1:A:305:LYS:HG3	2.15	0.47
1:B:165:MSE:HG2	1:B:213:MSE:HE2	1.80	0.46
1:B:293:LEU:HB3	1:B:294:PRO:HD3	1.98	0.46
1:A:64:HIS:HE1	6:A:2024:HOH:O	1.99	0.45
1:B:173:ASP:CB	5:B:700:GOL:H11	2.44	0.45
1:B:210:PRO:HA	1:B:213:MSE:O	2.17	0.44
1:A:293:LEU:HB3	1:A:294:PRO:CD	2.48	0.44
1:A:210:PRO:HA	1:A:213:MSE:O	2.17	0.44
1:A:79:THR:HB	1:A:89:ILE:HD12	2.00	0.43
1:B:38:LEU:O	1:B:42:VAL:HG22	2.19	0.43
1:A:246:ASN:N	1:A:247:PRO:CD	2.83	0.42
1:A:103:HIS:CD2	1:A:157:ASP:O	2.67	0.42
1:A:38:LEU:O	1:A:42:VAL:HG22	2.20	0.41
1:A:191:ASN:HD21	1:A:233:VAL:HA	1.85	0.41
1:B:240:HIS:HE1	1:B:318:GLY:O	2.02	0.41
1:A:240:HIS:HE1	1:A:318:GLY:O	2.03	0.41
1:B:124:ILE:HB	1:B:125:PRO:HD3	2.03	0.41
1:A:162:LYS:HB2	1:A:162:LYS:HE3	1.76	0.41
1:B:88:GLU:HB3	1:B:102:GLY:HA3	2.02	0.41
1:B:173:ASP:N	5:B:700:GOL:H11	2.25	0.41
1:B:246:ASN:HD22	1:B:246:ASN:HA	1.69	0.41
1:B:288:SER:HB2	1:B:289:PRO:HD3	2.03	0.41
1:A:74:LEU:N	1:A:74:LEU:HD23	2.37	0.40
1:B:159:VAL:O	1:B:160:SER:CB	2.69	0.40
1:A:77:CSD:OD2	1:A:123:ARG:NH2	2.54	0.40

All (1) symmetry-related close contacts are listed below. The label for Atom-2 includes the symmetry operator and encoded unit-cell translations to be applied.

Atom-1	Atom-2	Interatomic distance (Å)	Clash overlap (Å)
6:A:2130:HOH:O	6:B:2173:HOH:O[2_674]	1.87	0.33

## 5.3 Torsion angles [i](#)

### 5.3.1 Protein backbone [i](#)

In the following table, the Percentiles column shows the percent Ramachandran outliers of the chain as a percentile score with respect to all X-ray entries followed by that with respect to entries of similar resolution.

The Analysed column shows the number of residues for which the backbone conformation was analysed, and the total number of residues.

Mol	Chain	Analysed	Favoured	Allowed	Outliers	Percentiles	
1	A	337/348 (97%)	326 (97%)	10 (3%)	1 (0%)	37	37
1	B	337/348 (97%)	328 (97%)	8 (2%)	1 (0%)	37	37
All	All	674/696 (97%)	654 (97%)	18 (3%)	2 (0%)	37	37

All (2) Ramachandran outliers are listed below:

Mol	Chain	Res	Type
1	A	75	PRO
1	B	75	PRO

### 5.3.2 Protein sidechains [i](#)

In the following table, the Percentiles column shows the percent sidechain outliers of the chain as a percentile score with respect to all X-ray entries followed by that with respect to entries of similar resolution.

The Analysed column shows the number of residues for which the sidechain conformation was analysed, and the total number of residues.

Mol	Chain	Analysed	Rotameric	Outliers	Percentiles	
1	A	276/272 (102%)	274 (99%)	2 (1%)	81	87
1	B	276/272 (102%)	274 (99%)	2 (1%)	81	87
All	All	552/544 (102%)	548 (99%)	4 (1%)	81	87

All (4) residues with a non-rotameric sidechain are listed below:

Mol	Chain	Res	Type
1	A	242	CYS
1	A	281	ARG
1	B	242	CYS
1	B	281	ARG

Sometimes sidechains can be flipped to improve hydrogen bonding and reduce clashes. All (11) such sidechains are listed below:

Mol	Chain	Res	Type
1	A	50	HIS
1	A	64	HIS
1	A	103	HIS
1	A	191	ASN
1	A	220	GLN
1	A	234	ASN
1	B	97	GLN
1	B	103	HIS
1	B	191	ASN
1	B	220	GLN
1	B	246	ASN

### 5.3.3 RNA [i](#)

There are no RNA molecules in this entry.

## 5.4 Non-standard residues in protein, DNA, RNA chains [i](#)

2 non-standard protein/DNA/RNA residues are modelled in this entry.

In the following table, the Counts columns list the number of bonds (or angles) for which Mogul statistics could be retrieved, the number of bonds (or angles) that are observed in the model and the number of bonds (or angles) that are defined in the Chemical Component Dictionary. The Link column lists molecule types, if any, to which the group is linked. The Z score for a bond length (or angle) is the number of standard deviations the observed value is removed from the expected value. A bond length (or angle) with  $|Z| > 2$  is considered an outlier worth inspection. RMSZ is the root-mean-square of all Z scores of the bond lengths (or angles).

Mol	Type	Chain	Res	Link	Bond lengths			Bond angles		
					Counts	RMSZ	# Z  > 2	Counts	RMSZ	# Z  > 2
1	CSD	A	77	1	3,7,8	1.33	1 (33%)	1,8,10	2.20	1 (100%)
1	CSD	B	77	1	3,7,8	1.30	0	1,8,10	1.68	0

In the following table, the Chirals column lists the number of chiral outliers, the number of chiral centers analysed, the number of these observed in the model and the number defined in the Chemical Component Dictionary. Similar counts are reported in the Torsion and Rings columns. '-' means no outliers of that kind were identified.

Mol	Type	Chain	Res	Link	Chirals	Torsions	Rings
1	CSD	A	77	1	-	1/2/6/8	-

*Continued on next page...*

Continued from previous page...

Mol	Type	Chain	Res	Link	Chirals	Torsions	Rings
1	CSD	B	77	1	-	1/2/6/8	-

All (1) bond length outliers are listed below:

Mol	Chain	Res	Type	Atoms	Z	Observed(Å)	Ideal(Å)
1	A	77	CSD	CB-SG	-2.03	1.67	1.79

All (1) bond angle outliers are listed below:

Mol	Chain	Res	Type	Atoms	Z	Observed(°)	Ideal(°)
1	A	77	CSD	OD1-SG-CB	2.20	109.73	105.54

There are no chirality outliers.

All (2) torsion outliers are listed below:

Mol	Chain	Res	Type	Atoms
1	A	77	CSD	CA-CB-SG-OD1
1	B	77	CSD	CA-CB-SG-OD1

There are no ring outliers.

2 monomers are involved in 2 short contacts:

Mol	Chain	Res	Type	Clashes	Symm-Clashes
1	A	77	CSD	1	0
1	B	77	CSD	1	0

## 5.5 Carbohydrates [i](#)

There are no oligosaccharides in this entry.

## 5.6 Ligand geometry [i](#)

Of 7 ligands modelled in this entry, 2 are monoatomic - leaving 5 for Mogul analysis.

In the following table, the Counts columns list the number of bonds (or angles) for which Mogul statistics could be retrieved, the number of bonds (or angles) that are observed in the model and the number of bonds (or angles) that are defined in the Chemical Component Dictionary. The Link column lists molecule types, if any, to which the group is linked. The Z score for a bond length (or angle) is the number of standard deviations the observed value is removed from the

expected value. A bond length (or angle) with  $|Z| > 2$  is considered an outlier worth inspection. RMSZ is the root-mean-square of all Z scores of the bond lengths (or angles).

Mol	Type	Chain	Res	Link	Bond lengths			Bond angles		
					Counts	RMSZ	# Z  > 2	Counts	RMSZ	# Z  > 2
5	GOL	B	700	-	5,5,5	0.39	0	5,5,5	0.34	0
5	GOL	B	701	-	5,5,5	0.38	0	5,5,5	0.13	0
2	COM	B	500	3	6,6,6	2.77	1 (16%)	7,8,8	2.73	2 (28%)
4	MRD	A	800	-	7,7,7	0.35	0	9,10,10	0.27	0
2	COM	A	500	3	6,6,6	2.75	1 (16%)	7,8,8	2.30	2 (28%)

In the following table, the Chirals column lists the number of chiral outliers, the number of chiral centers analysed, the number of these observed in the model and the number defined in the Chemical Component Dictionary. Similar counts are reported in the Torsion and Rings columns. '-' means no outliers of that kind were identified.

Mol	Type	Chain	Res	Link	Chirals	Torsions	Rings
5	GOL	B	700	-	-	4/4/4/4	-
5	GOL	B	701	-	-	3/4/4/4	-
2	COM	B	500	3	-	0/4/4/4	-
4	MRD	A	800	-	-	5/5/5/5	-
2	COM	A	500	3	-	0/4/4/4	-

All (2) bond length outliers are listed below:

Mol	Chain	Res	Type	Atoms	Z	Observed(Å)	Ideal(Å)
2	B	500	COM	C2-S2	-6.67	1.68	1.77
2	A	500	COM	C2-S2	-6.54	1.68	1.77

All (4) bond angle outliers are listed below:

Mol	Chain	Res	Type	Atoms	Z	Observed(°)	Ideal(°)
2	B	500	COM	O2S-S2-C2	5.66	113.73	106.92
2	A	500	COM	O3S-S2-C2	4.89	113.67	105.77
2	B	500	COM	O1S-S2-C2	3.81	111.50	106.92
2	A	500	COM	O1S-S2-C2	2.83	110.33	106.92

There are no chirality outliers.

All (12) torsion outliers are listed below:

Mol	Chain	Res	Type	Atoms
4	A	800	MRD	O2-C2-C3-C4

*Continued on next page...*



*Continued from previous page...*

Mol	Chain	Res	Type	Atoms
4	A	800	MRD	CM-C2-C3-C4
4	A	800	MRD	C2-C3-C4-O4
5	B	700	GOL	C1-C2-C3-O3
5	B	700	GOL	O2-C2-C3-O3
5	B	701	GOL	O1-C1-C2-C3
5	B	701	GOL	O1-C1-C2-O2
5	B	700	GOL	O1-C1-C2-C3
4	A	800	MRD	C2-C3-C4-C5
4	A	800	MRD	C1-C2-C3-C4
5	B	701	GOL	C1-C2-C3-O3
5	B	700	GOL	O1-C1-C2-O2

There are no ring outliers.

2 monomers are involved in 11 short contacts:

Mol	Chain	Res	Type	Clashes	Symm-Clashes
5	B	700	GOL	6	0
4	A	800	MRD	5	0

## 5.7 Other polymers [i](#)

There are no such residues in this entry.

## 5.8 Polymer linkage issues [i](#)

There are no chain breaks in this entry.

## 6 Fit of model and data [i](#)

### 6.1 Protein, DNA and RNA chains [i](#)

In the following table, the column labelled ‘#RSRZ > 2’ contains the number (and percentage) of RSRZ outliers, followed by percent RSRZ outliers for the chain as percentile scores relative to all X-ray entries and entries of similar resolution. The OWAB column contains the minimum, median, 95<sup>th</sup> percentile and maximum values of the occupancy-weighted average B-factor per residue. The column labelled ‘Q < 0.9’ lists the number of (and percentage) of residues with an average occupancy less than 0.9.

Mol	Chain	Analysed	<RSRZ>	#RSRZ>2	OWAB(Å <sup>2</sup> )	Q<0.9
1	A	328/348 (94%)	-1.86	0 100 100	3, 8, 18, 36	0
1	B	328/348 (94%)	-1.87	0 100 100	3, 8, 18, 36	0
All	All	656/696 (94%)	-1.86	0 100 100	3, 8, 18, 36	0

There are no RSRZ outliers to report.

### 6.2 Non-standard residues in protein, DNA, RNA chains [i](#)

In the following table, the Atoms column lists the number of modelled atoms in the group and the number defined in the chemical component dictionary. The B-factors column lists the minimum, median, 95<sup>th</sup> percentile and maximum values of B factors of atoms in the group. The column labelled ‘Q < 0.9’ lists the number of atoms with occupancy less than 0.9.

Mol	Type	Chain	Res	Atoms	RSCC	RSR	B-factors(Å <sup>2</sup> )	Q<0.9
1	CSD	A	77	8/9	1.00	0.02	6,9,17,17	0
1	CSD	B	77	8/9	1.00	0.02	6,8,18,19	0

### 6.3 Carbohydrates [i](#)

There are no monosaccharides in this entry.

### 6.4 Ligands [i](#)

In the following table, the Atoms column lists the number of modelled atoms in the group and the number defined in the chemical component dictionary. The B-factors column lists the minimum, median, 95<sup>th</sup> percentile and maximum values of B factors of atoms in the group. The column labelled ‘Q < 0.9’ lists the number of atoms with occupancy less than 0.9.

Mol	Type	Chain	Res	Atoms	RSCC	RSR	B-factors( $\text{\AA}^2$ )	Q<0.9
4	MRD	A	800	8/8	0.98	0.07	30,32,33,34	0
5	GOL	B	701	6/6	0.98	0.04	51,51,51,51	0
5	GOL	B	700	6/6	0.99	0.05	33,36,37,39	0
3	ZN	B	600	1/1	1.00	0.01	16,16,16,16	0
2	COM	A	500	7/7	1.00	0.02	13,14,15,16	0
2	COM	B	500	7/7	1.00	0.02	13,14,16,16	0
3	ZN	A	600	1/1	1.00	0.02	16,16,16,16	0

## 6.5 Other polymers [i](#)

There are no such residues in this entry.