



# Full wwPDB X-ray Structure Validation Report ⓘ

Dec 12, 2023 – 03:54 pm GMT

PDB ID : 3ZCW  
Title : Eg5 - New allosteric binding site  
Authors : Ulaganathan, V.; Talapatra, S.K.; Kozielski, F.; Pannifer, A.D.  
Deposited on : 2012-11-23  
Resolution : 1.69 Å(reported)

This is a Full wwPDB X-ray Structure Validation Report for a publicly released PDB entry.

We welcome your comments at [validation@mail.wwpdb.org](mailto:validation@mail.wwpdb.org)

A user guide is available at

<https://www.wwpdb.org/validation/2017/XrayValidationReportHelp>

with specific help available everywhere you see the ⓘ symbol.

The types of validation reports are described at

<http://www.wwpdb.org/validation/2017/FAQs#types>.

---

The following versions of software and data (see [references ⓘ](#)) were used in the production of this report:

MolProbity : 4.02b-467  
Mogul : 1.8.4, CSD as541be (2020)  
Xtriage (Phenix) : 1.13  
EDS : 2.36  
buster-report : 1.1.7 (2018)  
Percentile statistics : 20191225.v01 (using entries in the PDB archive December 25th 2019)  
Refmac : 5.8.0158  
CCP4 : 7.0.044 (Gargrove)  
Ideal geometry (proteins) : Engh & Huber (2001)  
Ideal geometry (DNA, RNA) : Parkinson et al. (1996)  
Validation Pipeline (wwPDB-VP) : 2.36

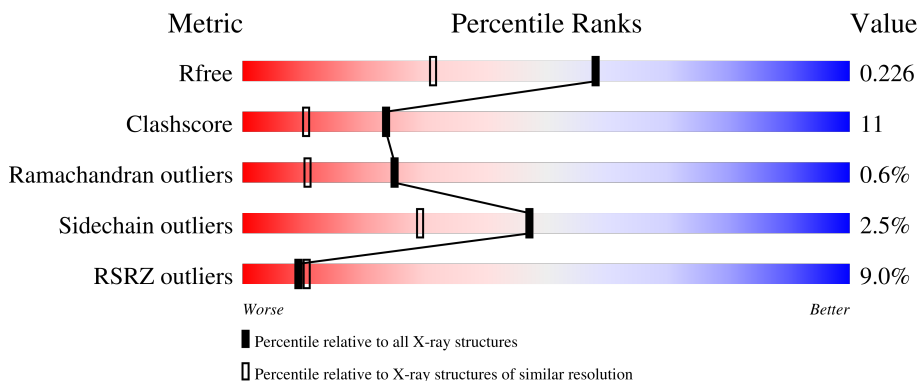
# 1 Overall quality at a glance

The following experimental techniques were used to determine the structure:

*X-RAY DIFFRACTION*

The reported resolution of this entry is 1.69 Å.

Percentile scores (ranging between 0-100) for global validation metrics of the entry are shown in the following graphic. The table shows the number of entries on which the scores are based.



Metric	Whole archive (#Entries)	Similar resolution (#Entries, resolution range(Å))
$R_{free}$	130704	4298 (1.70-1.70)
Clashscore	141614	4695 (1.70-1.70)
Ramachandran outliers	138981	4610 (1.70-1.70)
Sidechain outliers	138945	4610 (1.70-1.70)
RSRZ outliers	127900	4222 (1.70-1.70)

The table below summarises the geometric issues observed across the polymeric chains and their fit to the electron density. The red, orange, yellow and green segments of the lower bar indicate the fraction of residues that contain outliers for  $\geq 3$ , 2, 1 and 0 types of geometric quality criteria respectively. A grey segment represents the fraction of residues that are not modelled. The numeric value for each fraction is indicated below the corresponding segment, with a dot representing fractions  $\leq 5\%$ . The upper red bar (where present) indicates the fraction of residues that have poor fit to the electron density. The numeric value is given above the bar.

Mol	Chain	Length	Quality of chain
1	A	348	

The following table lists non-polymeric compounds, carbohydrate monomers and non-standard residues in protein, DNA, RNA chains that are outliers for geometric or electron-density-fit criteria:

Mol	Type	Chain	Res	Chirality	Geometry	Clashes	Electron density
6	PEG	A	1369	-	X	-	-

## 2 Entry composition [i](#)

There are 7 unique types of molecules in this entry. The entry contains 3129 atoms, of which 0 are hydrogens and 0 are deuteriums.

In the tables below, the ZeroOcc column contains the number of atoms modelled with zero occupancy, the AltConf column contains the number of residues with at least one atom in alternate conformation and the Trace column contains the number of residues modelled with at most 2 atoms.

- Molecule 1 is a protein called KINESIN-LIKE PROTEIN KIF11.

Mol	Chain	Residues	Atoms					ZeroOcc	AltConf	Trace
			Total	C	N	O	S			
1	A	321	2566	1620	433	500	13	0	18	0

- Molecule 2 is ADENOSINE-5'-DIPHOSPHATE (three-letter code: ADP) (formula:  $C_{10}H_{15}N_5O_{10}P_2$ ).

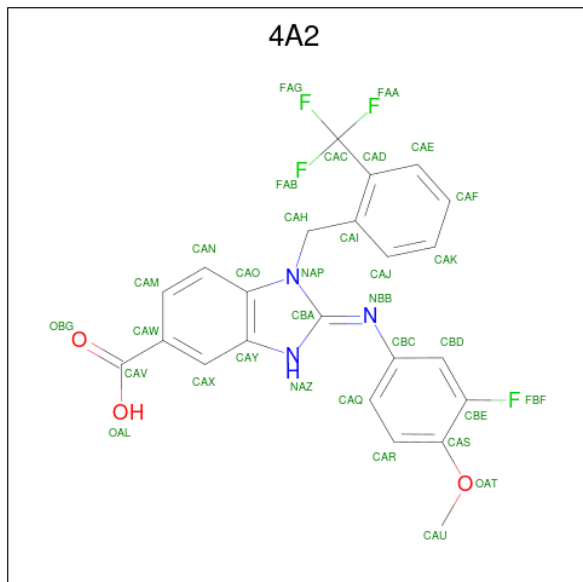


Mol	Chain	Residues	Atoms					ZeroOcc	AltConf
			Total	C	N	O	P		
2	A	1	27	10	5	10	2	0	0

- Molecule 3 is MAGNESIUM ION (three-letter code: MG) (formula: Mg).

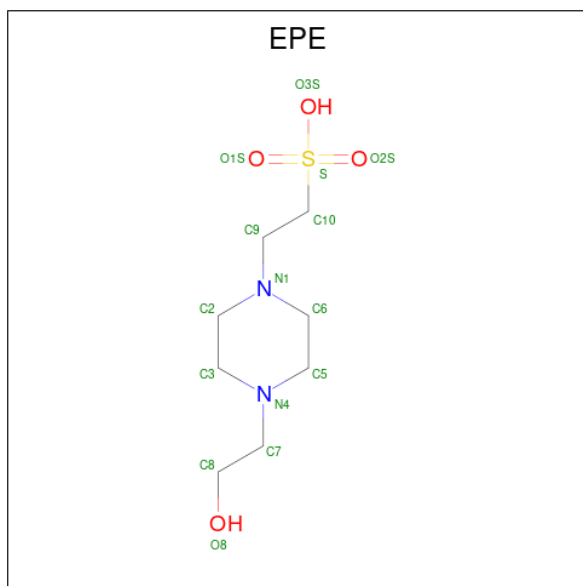
Mol	Chain	Residues	Atoms		ZeroOcc	AltConf
3	A	1	Total	Mg	0	0
			1	1		

- Molecule 4 is (2E)-2-(3-fluoranyl-4-methoxy-phenyl)imino-1-[[2-(trifluoromethyl)phenyl]methyl]-3H-benzimidazole-5-carboxylic acid (three-letter code: 4A2) (formula: C<sub>23</sub>H<sub>17</sub>F<sub>4</sub>N<sub>3</sub>O<sub>3</sub>).



Mol	Chain	Residues	Atoms				ZeroOcc	AltConf	
			Total	C	F	N			O
4	A	1	33	23	4	3	3	0	0
4	A	1	Total	C	F	N	O	0	0
			33	23	4	3	3		

- Molecule 5 is 4-(2-HYDROXYETHYL)-1-PIPERAZINE ETHANESULFONIC ACID (three-letter code: EPE) (formula: C<sub>8</sub>H<sub>18</sub>N<sub>2</sub>O<sub>4</sub>S).



Mol	Chain	Residues	Atoms					ZeroOcc	AltConf
			Total	C	N	O	S		
5	A	1	15	8	2	4	1	0	0

- Molecule 6 is DI(HYDROXYETHYL)ETHER (three-letter code: PEG) (formula: C<sub>4</sub>H<sub>10</sub>O<sub>3</sub>).



Mol	Chain	Residues	Atoms			ZeroOcc	AltConf
			Total	C	O		
6	A	1	4	2	2	0	0

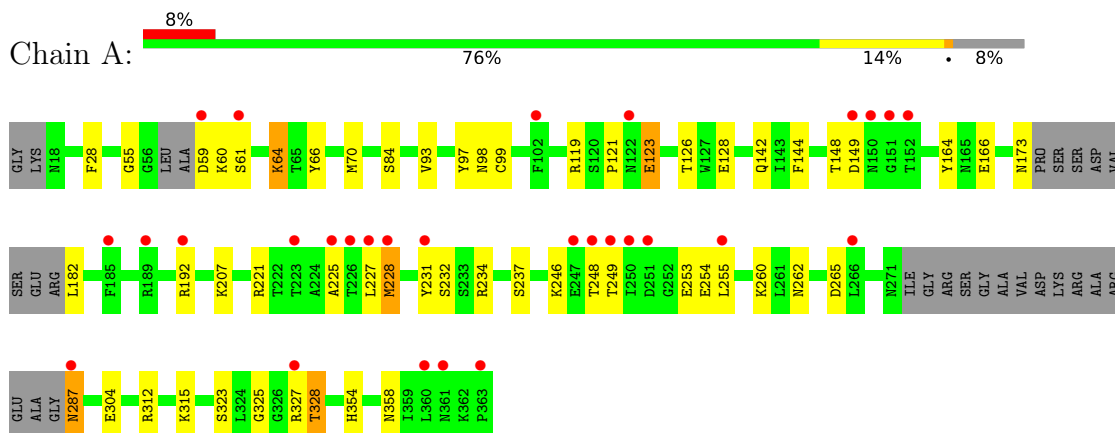
- Molecule 7 is water.

Mol	Chain	Residues	Atoms		ZeroOcc	AltConf
7	A	450	Total	O	0	0
			450	450		

### 3 Residue-property plots [i](#)

These plots are drawn for all protein, RNA, DNA and oligosaccharide chains in the entry. The first graphic for a chain summarises the proportions of the various outlier classes displayed in the second graphic. The second graphic shows the sequence view annotated by issues in geometry and electron density. Residues are color-coded according to the number of geometric quality criteria for which they contain at least one outlier: green = 0, yellow = 1, orange = 2 and red = 3 or more. A red dot above a residue indicates a poor fit to the electron density ( $RSRZ > 2$ ). Stretches of 2 or more consecutive residues without any outlier are shown as a green connector. Residues present in the sample, but not in the model, are shown in grey.

- Molecule 1: KINESIN-LIKE PROTEIN KIF11



## 4 Data and refinement statistics i

Property	Value	Source
Space group	C 1 2 1	Depositor
Cell constants a, b, c, $\alpha$ , $\beta$ , $\gamma$	107.94Å 62.89Å 75.05Å 90.00° 117.46° 90.00°	Depositor
Resolution (Å)	28.47 – 1.69 28.47 – 1.69	Depositor EDS
% Data completeness (in resolution range)	99.0 (28.47-1.69) 99.1 (28.47-1.69)	Depositor EDS
$R_{merge}$	0.08	Depositor
$R_{sym}$	(Not available)	Depositor
$\langle I/\sigma(I) \rangle$ <sup>1</sup>	1.77 (at 1.69Å)	Xtriage
Refinement program	PHENIX (PHENIX.REFINE)	Depositor
R, $R_{free}$	0.194 , 0.233 0.190 , 0.226	Depositor DCC
$R_{free}$ test set	2506 reflections (5.07%)	wwPDB-VP
Wilson B-factor (Å <sup>2</sup> )	22.1	Xtriage
Anisotropy	0.218	Xtriage
Bulk solvent $k_{sol}$ (e/Å <sup>3</sup> ), $B_{sol}$ (Å <sup>2</sup> )	0.34 , 51.4	EDS
L-test for twinning <sup>2</sup>	$\langle  L  \rangle = 0.48$ , $\langle L^2 \rangle = 0.31$	Xtriage
Estimated twinning fraction	0.023 for $1/2^*h+3/2^*k, 1/2^*h-1/2^*k, -1/2^*h-1/2^*k-l$ 0.021 for $1/2^*h-3/2^*k, -1/2^*h-1/2^*k, -1/2^*h+1/2^*k-l$	Xtriage
$F_o, F_c$ correlation	0.96	EDS
Total number of atoms	3129	wwPDB-VP
Average B, all atoms (Å <sup>2</sup> )	29.0	wwPDB-VP

Xtriage's analysis on translational NCS is as follows: *The largest off-origin peak in the Patterson function is 6.13% of the height of the origin peak. No significant pseudotranslation is detected.*

<sup>1</sup>Intensities estimated from amplitudes.

<sup>2</sup>Theoretical values of  $\langle |L| \rangle$ ,  $\langle L^2 \rangle$  for acentric reflections are 0.5, 0.333 respectively for untwinned datasets, and 0.375, 0.2 for perfectly twinned datasets.

## 5 Model quality [i](#)

### 5.1 Standard geometry [i](#)

Bond lengths and bond angles in the following residue types are not validated in this section: 4A2, ADP, MG, EPE, PEG

The Z score for a bond length (or angle) is the number of standard deviations the observed value is removed from the expected value. A bond length (or angle) with  $|Z| > 5$  is considered an outlier worth inspection. RMSZ is the root-mean-square of all Z scores of the bond lengths (or angles).

Mol	Chain	Bond lengths		Bond angles	
		RMSZ	# Z  >5	RMSZ	# Z  >5
1	A	0.55	0/2656	0.65	0/3593

There are no bond length outliers.

There are no bond angle outliers.

There are no chirality outliers.

There are no planarity outliers.

### 5.2 Too-close contacts [i](#)

In the following table, the Non-H and H(model) columns list the number of non-hydrogen atoms and hydrogen atoms in the chain respectively. The H(added) column lists the number of hydrogen atoms added and optimized by MolProbity. The Clashes column lists the number of clashes within the asymmetric unit, whereas Symm-Clashes lists symmetry-related clashes.

Mol	Chain	Non-H	H(model)	H(added)	Clashes	Symm-Clashes
1	A	2566	0	2605	56	0
2	A	27	0	12	0	0
3	A	1	0	0	0	0
4	A	66	0	32	1	0
5	A	15	0	17	2	0
6	A	4	0	5	3	0
7	A	450	0	0	35	3
All	All	3129	0	2671	60	3

The all-atom clashscore is defined as the number of clashes found per 1000 atoms (including hydrogen atoms). The all-atom clashscore for this structure is 11.

All (60) close contacts within the same asymmetric unit are listed below, sorted by their clash magnitude.



Atom-1	Atom-2	Interatomic distance (Å)	Clash overlap (Å)
1:A:260:LYS:HE2	1:A:262:ASN:HD21	1.39	0.87
1:A:182:LEU:N	7:A:2273:HOH:O	2.13	0.81
6:A:1369:PEG:O1	7:A:2448:HOH:O	2.02	0.76
1:A:328:THR:HG22	7:A:2411:HOH:O	1.88	0.74
6:A:1369:PEG:O1	7:A:2391:HOH:O	1.88	0.74
1:A:287:ASN:N	7:A:2368:HOH:O	2.22	0.72
1:A:55:GLY:HA3	1:A:59:ASP:HB3	1.70	0.71
1:A:207:LYS:HE3	7:A:2226:HOH:O	1.89	0.71
1:A:97:TYR:C	7:A:2164:HOH:O	2.31	0.69
1:A:59:ASP:OD1	1:A:60:LYS:N	2.21	0.67
1:A:64:LYS:HG2	1:A:66:TYR:CZ	2.30	0.67
1:A:287:ASN:HA	7:A:2375:HOH:O	1.95	0.65
1:A:254:GLU:HB2	7:A:2355:HOH:O	1.96	0.65
1:A:182:LEU:N	7:A:2284:HOH:O	2.30	0.64
1:A:164:TYR:OH	1:A:234:ARG:NH1	2.28	0.64
1:A:119:ARG:NH2	1:A:123:GLU:HG3	2.12	0.63
1:A:144:PHE:O	1:A:148:THR:HG23	2.00	0.62
1:A:221:ARG:HB2	7:A:2321:HOH:O	2.01	0.59
1:A:98[B]:ASN:ND2	1:A:323[B]:SER:OG	2.35	0.59
1:A:328:THR:N	7:A:2412:HOH:O	2.35	0.58
1:A:64:LYS:NZ	7:A:2118:HOH:O	2.25	0.57
1:A:59:ASP:CG	1:A:60:LYS:H	2.06	0.56
1:A:192:ARG:HD2	7:A:2297:HOH:O	2.06	0.54
1:A:225:ALA:HA	7:A:2331:HOH:O	2.06	0.54
1:A:328:THR:CG2	7:A:2173:HOH:O	2.56	0.53
1:A:327:ARG:HB3	7:A:2412:HOH:O	2.08	0.53
1:A:173:ASN:C	7:A:2282:HOH:O	2.48	0.52
1:A:126:THR:HA	7:A:2202:HOH:O	2.09	0.52
5:A:1368:EPE:O1S	7:A:2340:HOH:O	2.18	0.52
1:A:248:THR:HA	1:A:253:GLU:O	2.09	0.51
1:A:97:TYR:HB2	7:A:2164:HOH:O	2.11	0.51
1:A:207:LYS:CE	7:A:2226:HOH:O	2.56	0.50
1:A:287:ASN:HB2	7:A:2376:HOH:O	2.11	0.50
1:A:192:ARG:CD	7:A:2297:HOH:O	2.60	0.49
1:A:128:GLU:OE2	7:A:2227:HOH:O	2.20	0.48
1:A:64:LYS:HG2	1:A:66:TYR:CE1	2.48	0.48
1:A:70[B]:MET:SD	1:A:84[B]:SER:OG	2.71	0.48
1:A:249:THR:CG2	1:A:255:LEU:HD11	2.43	0.48
1:A:98[B]:ASN:CG	1:A:323[B]:SER:OG	2.51	0.47
1:A:166:GLU:OE2	7:A:2269:HOH:O	2.20	0.46
1:A:98[B]:ASN:CG	1:A:260:LYS:HB3	2.37	0.45
1:A:246:LYS:HG3	7:A:2248:HOH:O	2.15	0.45

*Continued on next page...*

Continued from previous page...

Atom-1	Atom-2	Interatomic distance (Å)	Clash overlap (Å)
1:A:59:ASP:N	7:A:2100:HOH:O	2.49	0.45
1:A:237:SER:HB3	1:A:265:ASP:HB3	1.99	0.45
4:A:1366:4A2:OBG	6:A:1369:PEG:H22	2.16	0.44
1:A:93:VAL:HA	7:A:2164:HOH:O	2.17	0.44
1:A:232:SER:HB3	7:A:2337:HOH:O	2.17	0.44
1:A:142:GLN:HG2	7:A:2237:HOH:O	2.18	0.43
1:A:227:LEU:HG	1:A:231:TYR:CE2	2.54	0.43
1:A:59:ASP:OD1	1:A:61:SER:N	2.52	0.43
1:A:166:GLU:O	1:A:315[A]:LYS:NZ	2.35	0.42
1:A:98[B]:ASN:HD22	1:A:99:CYS:N	2.18	0.42
1:A:55:GLY:N	7:A:2090:HOH:O	2.30	0.42
1:A:228:MET:HG2	7:A:2001:HOH:O	2.19	0.41
1:A:121:PRO:HB2	7:A:2206:HOH:O	2.20	0.41
1:A:228:MET:CE	5:A:1368:EPE:H71	2.51	0.41
1:A:304:GLU:OE2	7:A:2392:HOH:O	2.21	0.41

All (3) symmetry-related close contacts are listed below. The label for Atom-2 includes the symmetry operator and encoded unit-cell translations to be applied.

Atom-1	Atom-2	Interatomic distance (Å)	Clash overlap (Å)
7:A:2193:HOH:O	7:A:2193:HOH:O[2_555]	2.06	0.14
7:A:2029:HOH:O	7:A:2214:HOH:O[2_556]	2.14	0.06
7:A:2055:HOH:O	7:A:2142:HOH:O[2_556]	2.19	0.01

## 5.3 Torsion angles [i](#)

### 5.3.1 Protein backbone [i](#)

In the following table, the Percentiles column shows the percent Ramachandran outliers of the chain as a percentile score with respect to all X-ray entries followed by that with respect to entries of similar resolution.

The Analysed column shows the number of residues for which the backbone conformation was analysed, and the total number of residues.

Mol	Chain	Analysed	Favoured	Allowed	Outliers	Percentiles
1	A	331/348 (95%)	325 (98%)	3 (1%)	3 (1%)	<b>17</b>   <b>5</b>

All (3) Ramachandran outliers are listed below:

Mol	Chain	Res	Type
1	A	325	GLY
1	A	358[A]	ASN
1	A	358[B]	ASN

### 5.3.2 Protein sidechains [i](#)

In the following table, the Percentiles column shows the percent sidechain outliers of the chain as a percentile score with respect to all X-ray entries followed by that with respect to entries of similar resolution.

The Analysed column shows the number of residues for which the sidechain conformation was analysed, and the total number of residues.

Mol	Chain	Analysed	Rotameric	Outliers	Percentiles
1	A	294/304 (97%)	287 (98%)	7 (2%)	49 31

All (7) residues with a non-rotameric sidechain are listed below:

Mol	Chain	Res	Type
1	A	28	PHE
1	A	64	LYS
1	A	123	GLU
1	A	228	MET
1	A	287	ASN
1	A	312	ARG
1	A	328	THR

Sometimes sidechains can be flipped to improve hydrogen bonding and reduce clashes. All (2) such sidechains are listed below:

Mol	Chain	Res	Type
1	A	262	ASN
1	A	308	HIS

### 5.3.3 RNA [i](#)

There are no RNA molecules in this entry.

## 5.4 Non-standard residues in protein, DNA, RNA chains [i](#)

There are no non-standard protein/DNA/RNA residues in this entry.

## 5.5 Carbohydrates [i](#)

There are no monosaccharides in this entry.

## 5.6 Ligand geometry [i](#)

Of 6 ligands modelled in this entry, 1 is monoatomic - leaving 5 for Mogul analysis.

In the following table, the Counts columns list the number of bonds (or angles) for which Mogul statistics could be retrieved, the number of bonds (or angles) that are observed in the model and the number of bonds (or angles) that are defined in the Chemical Component Dictionary. The Link column lists molecule types, if any, to which the group is linked. The Z score for a bond length (or angle) is the number of standard deviations the observed value is removed from the expected value. A bond length (or angle) with  $|Z| > 2$  is considered an outlier worth inspection. RMSZ is the root-mean-square of all Z scores of the bond lengths (or angles).

Mol	Type	Chain	Res	Link	Bond lengths			Bond angles		
					Counts	RMSZ	# Z  > 2	Counts	RMSZ	# Z  > 2
4	4A2	A	1366	-	35,36,36	1.53	6 (17%)	49,53,53	1.36	5 (10%)
2	ADP	A	1364	3	24,29,29	0.86	2 (8%)	29,45,45	1.40	6 (20%)
4	4A2	A	1367	-	35,36,36	1.32	5 (14%)	49,53,53	2.05	8 (16%)
5	EPE	A	1368	-	15,15,15	1.00	1 (6%)	18,20,20	2.02	6 (33%)
6	PEG	A	1369	-	3,3,6	0.51	0	2,2,5	3.26	2 (100%)

In the following table, the Chirals column lists the number of chiral outliers, the number of chiral centers analysed, the number of these observed in the model and the number defined in the Chemical Component Dictionary. Similar counts are reported in the Torsion and Rings columns. '-' means no outliers of that kind were identified.

Mol	Type	Chain	Res	Link	Chirals	Torsions	Rings
4	4A2	A	1366	-	-	1/20/20/20	0/4/4/4
2	ADP	A	1364	3	-	2/12/32/32	0/3/3/3
4	4A2	A	1367	-	-	2/20/20/20	0/4/4/4
5	EPE	A	1368	-	-	6/9/19/19	0/1/1/1
6	PEG	A	1369	-	-	1/1/1/4	-

All (14) bond length outliers are listed below:

Mol	Chain	Res	Type	Atoms	Z	Observed(Å)	Ideal(Å)
4	A	1366	4A2	CBC-NBB	-4.73	1.34	1.42
4	A	1367	4A2	CBC-NBB	-4.15	1.35	1.42
4	A	1366	4A2	CAO-NAP	-3.94	1.32	1.39
5	A	1368	EPE	C10-S	3.47	1.82	1.77

*Continued on next page...*

*Continued from previous page...*

Mol	Chain	Res	Type	Atoms	Z	Observed(Å)	Ideal(Å)
4	A	1367	4A2	CBA-NBB	2.95	1.34	1.28
4	A	1366	4A2	CBA-NBB	2.79	1.33	1.28
4	A	1366	4A2	CAH-CAI	2.76	1.56	1.51
4	A	1367	4A2	CAY-NAZ	-2.70	1.33	1.38
4	A	1366	4A2	CAY-NAZ	-2.50	1.34	1.38
4	A	1367	4A2	CAW-CAV	2.44	1.54	1.49
4	A	1367	4A2	CAO-NAP	-2.39	1.35	1.39
4	A	1366	4A2	CAE-CAD	2.30	1.42	1.39
2	A	1364	ADP	C5-C4	2.16	1.46	1.40
2	A	1364	ADP	C2-N3	2.05	1.35	1.32

All (27) bond angle outliers are listed below:

Mol	Chain	Res	Type	Atoms	Z	Observed(°)	Ideal(°)
4	A	1367	4A2	OAT-CAS-CBE	10.04	123.23	116.26
4	A	1366	4A2	OAT-CAS-CBE	4.75	119.56	116.26
4	A	1367	4A2	CAU-OAT-CAS	-4.22	111.16	117.53
4	A	1367	4A2	NAZ-CBA-NBB	-4.19	124.17	129.96
4	A	1367	4A2	FAA-CAC-CAD	-3.93	105.86	112.70
5	A	1368	EPE	C7-N4-C3	3.80	120.95	111.23
5	A	1368	EPE	C5-N4-C3	3.77	117.31	108.83
6	A	1369	PEG	O1-C1-C2	3.67	138.31	111.91
4	A	1367	4A2	OAT-CAS-CAR	-3.62	118.17	124.37
2	A	1364	ADP	N3-C2-N1	-3.52	123.18	128.68
5	A	1368	EPE	C7-N4-C5	3.43	120.02	111.23
4	A	1366	4A2	CAX-CAY-CAO	-3.03	118.52	121.56
5	A	1368	EPE	O2S-S-C10	2.95	110.47	106.92
5	A	1368	EPE	O3S-S-C10	2.90	110.45	105.77
6	A	1369	PEG	O2-C2-C1	-2.79	91.82	111.91
4	A	1366	4A2	NAZ-CBA-NBB	-2.75	126.15	129.96
4	A	1366	4A2	CBC-NBB-CBA	2.71	128.23	121.65
2	A	1364	ADP	N6-C6-N1	2.52	123.80	118.57
4	A	1367	4A2	FAG-CAC-CAD	-2.41	108.50	112.70
2	A	1364	ADP	O2A-PA-O1A	2.28	123.51	112.24
2	A	1364	ADP	O3B-PB-O3A	2.27	112.25	104.64
4	A	1367	4A2	CAE-CAD-CAI	2.24	121.38	118.55
2	A	1364	ADP	C2-N1-C6	2.20	122.52	118.75
4	A	1367	4A2	OAL-CAV-CAW	2.14	120.40	114.85
2	A	1364	ADP	C1'-N9-C4	-2.03	123.08	126.64
5	A	1368	EPE	C6-N1-C2	2.02	113.37	108.83
4	A	1366	4A2	CAM-CAW-CAX	2.00	121.61	119.24

There are no chirality outliers.

All (12) torsion outliers are listed below:

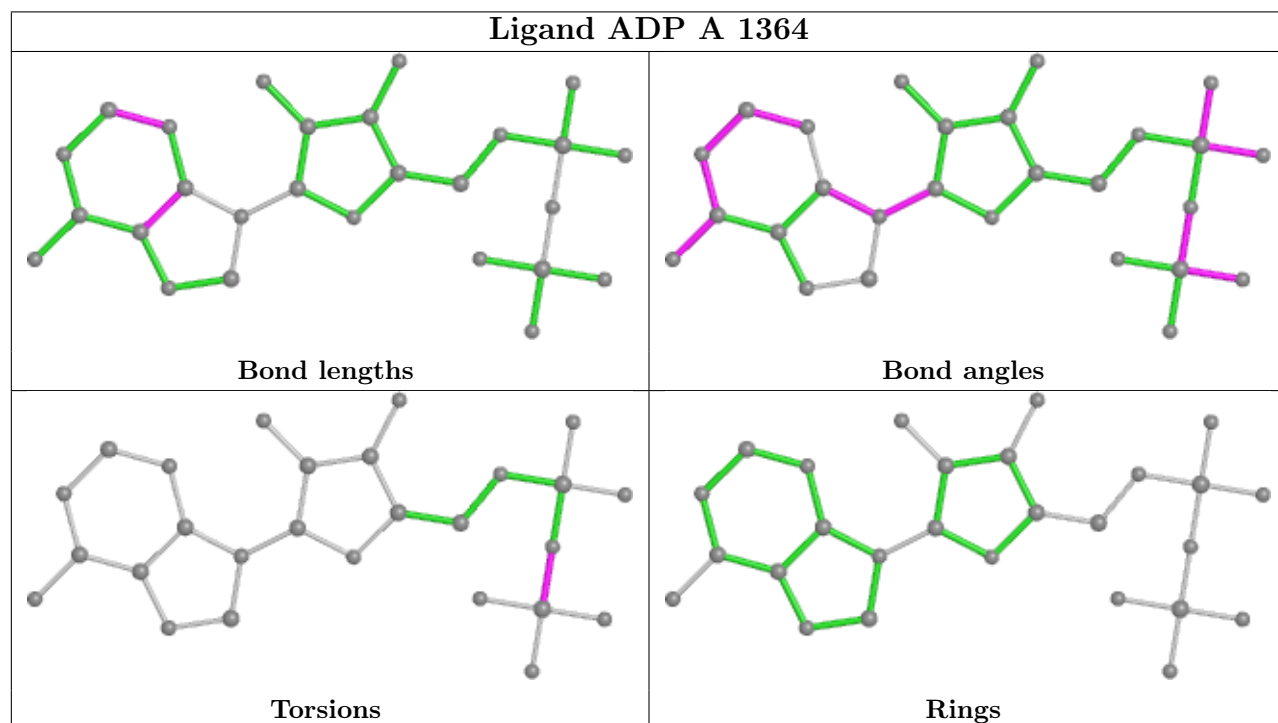
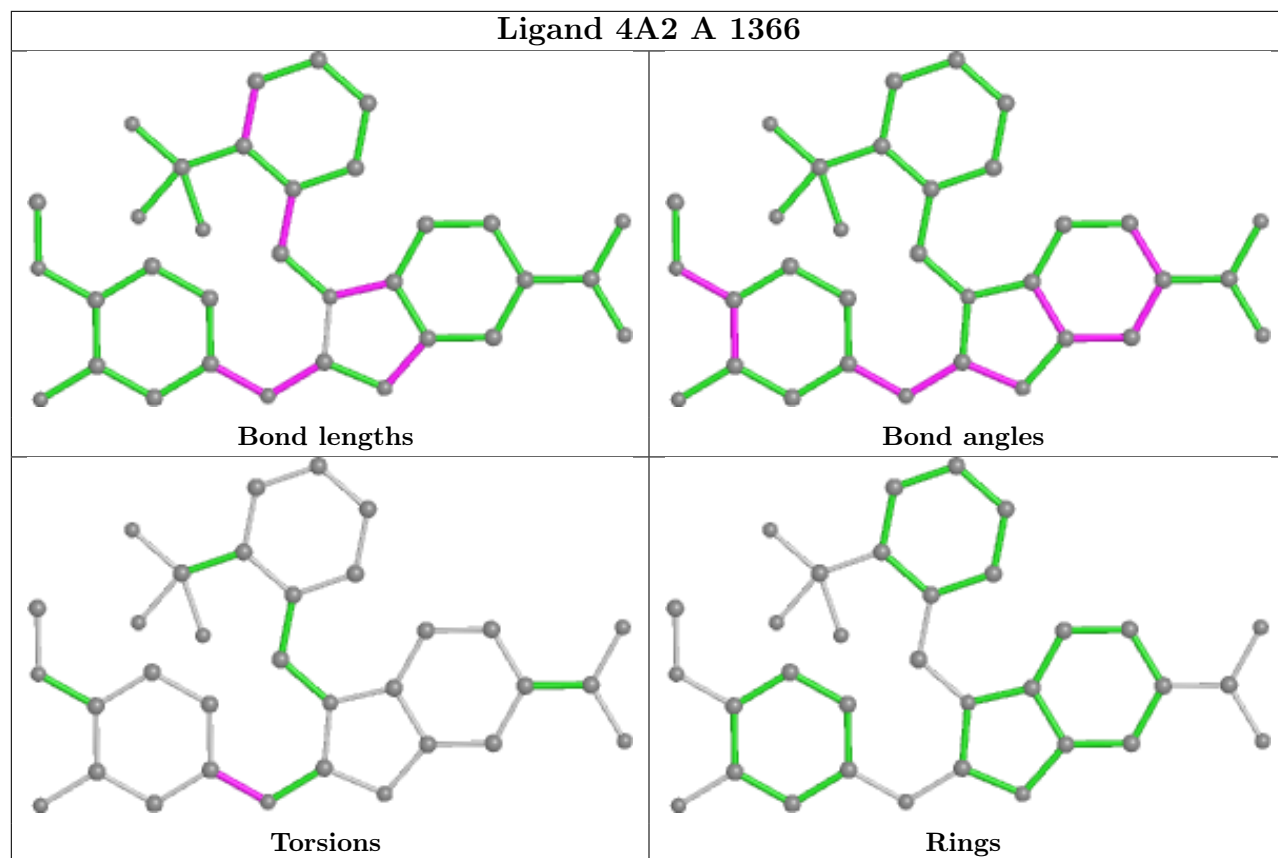
Mol	Chain	Res	Type	Atoms
2	A	1364	ADP	PA-O3A-PB-O2B
2	A	1364	ADP	PA-O3A-PB-O3B
4	A	1367	4A2	CBE-CAS-OAT-CAU
4	A	1367	4A2	CAR-CAS-OAT-CAU
5	A	1368	EPE	C9-C10-S-O3S
5	A	1368	EPE	C10-C9-N1-C6
5	A	1368	EPE	C8-C7-N4-C5
5	A	1368	EPE	C9-C10-S-O1S
5	A	1368	EPE	C9-C10-S-O2S
6	A	1369	PEG	O1-C1-C2-O2
5	A	1368	EPE	C10-C9-N1-C2
4	A	1366	4A2	CBD-CBC-NBB-CBA

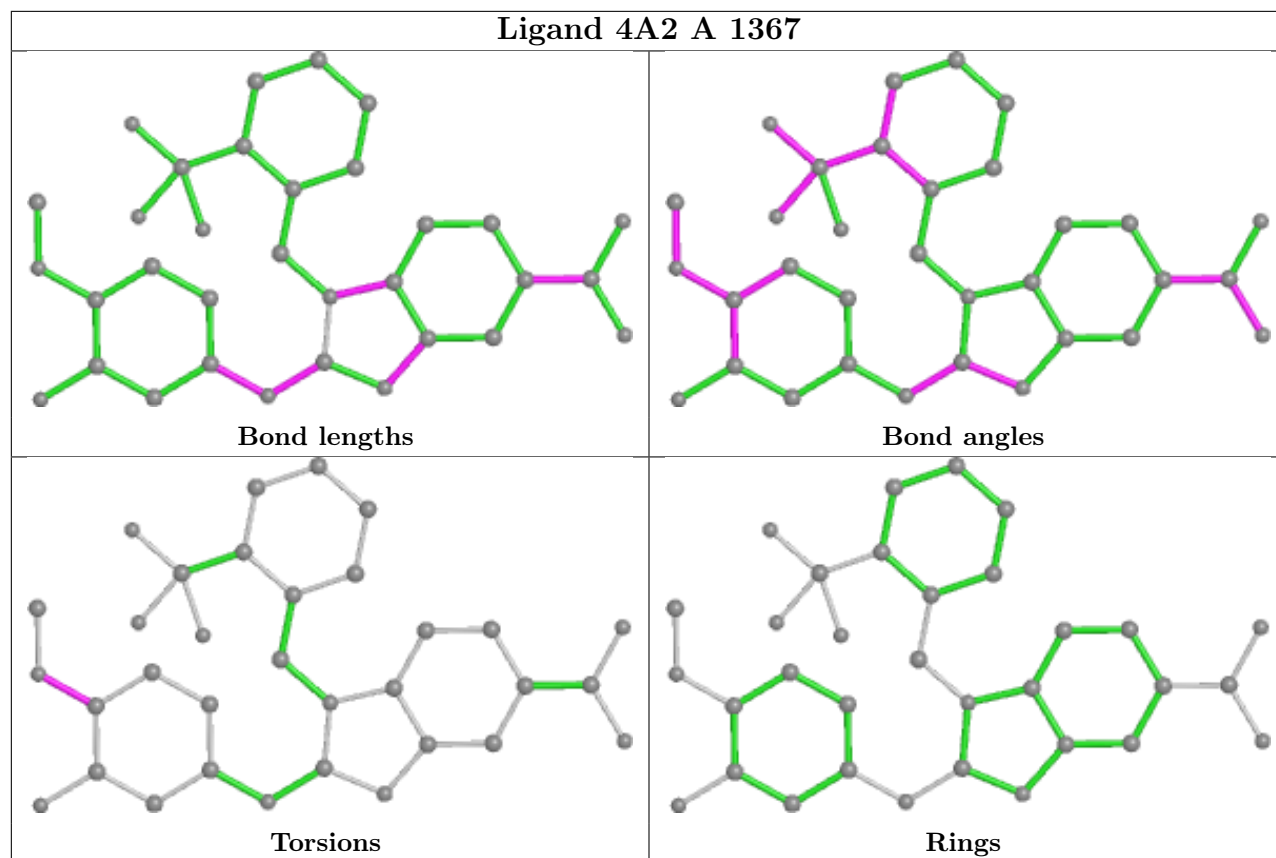
There are no ring outliers.

3 monomers are involved in 5 short contacts:

Mol	Chain	Res	Type	Clashes	Symm-Clashes
4	A	1366	4A2	1	0
5	A	1368	EPE	2	0
6	A	1369	PEG	3	0

The following is a two-dimensional graphical depiction of Mogul quality analysis of bond lengths, bond angles, torsion angles, and ring geometry for all instances of the Ligand of Interest. In addition, ligands with molecular weight > 250 and outliers as shown on the validation Tables will also be included. For torsion angles, if less than 5% of the Mogul distribution of torsion angles is within 10 degrees of the torsion angle in question, then that torsion angle is considered an outlier. Any bond that is central to one or more torsion angles identified as an outlier by Mogul will be highlighted in the graph. For rings, the root-mean-square deviation (RMSD) between the ring in question and similar rings identified by Mogul is calculated over all ring torsion angles. If the average RMSD is greater than 60 degrees and the minimal RMSD between the ring in question and any Mogul-identified rings is also greater than 60 degrees, then that ring is considered an outlier. The outliers are highlighted in purple. The color gray indicates Mogul did not find sufficient equivalents in the CSD to analyse the geometry.





## 5.7 Other polymers [\(i\)](#)

There are no such residues in this entry.

## 5.8 Polymer linkage issues [\(i\)](#)

There are no chain breaks in this entry.



## 6 Fit of model and data

### 6.1 Protein, DNA and RNA chains

In the following table, the column labelled ‘#RSRZ> 2’ contains the number (and percentage) of RSRZ outliers, followed by percent RSRZ outliers for the chain as percentile scores relative to all X-ray entries and entries of similar resolution. The OWAB column contains the minimum, median, 95<sup>th</sup> percentile and maximum values of the occupancy-weighted average B-factor per residue. The column labelled ‘Q< 0.9’ lists the number of (and percentage) of residues with an average occupancy less than 0.9.

Mol	Chain	Analysed	<RSRZ>	#RSRZ>2	OWAB(Å <sup>2</sup> )	Q<0.9
1	A	321/348 (92%)	0.36	29 (9%) <b>9</b> <b>10</b>	12, 24, 56, 69	3 (0%)

All (29) RSRZ outliers are listed below:

Mol	Chain	Res	Type	RSRZ
1	A	250	ILE	8.4
1	A	231	TYR	6.3
1	A	227	LEU	5.3
1	A	360	LEU	5.1
1	A	149[A]	ASP	4.9
1	A	185	PHE	4.7
1	A	363	PRO	4.6
1	A	249	THR	4.2
1	A	61	SER	4.2
1	A	327	ARG	3.8
1	A	150	ASN	3.7
1	A	226	THR	3.5
1	A	225	ALA	3.2
1	A	255	LEU	3.2
1	A	59	ASP	3.1
1	A	228	MET	2.9
1	A	248	THR	2.9
1	A	287	ASN	2.8
1	A	151	GLY	2.7
1	A	192	ARG	2.7
1	A	251	ASP	2.7
1	A	361	ASN	2.6
1	A	102	PHE	2.5
1	A	152	THR	2.4
1	A	247	GLU	2.2
1	A	122	ASN	2.2
1	A	223	THR	2.1

*Continued on next page...*

*Continued from previous page...*

Mol	Chain	Res	Type	RSRZ
1	A	189	ARG	2.0
1	A	266	LEU	2.0

## 6.2 Non-standard residues in protein, DNA, RNA chains [i](#)

There are no non-standard protein/DNA/RNA residues in this entry.

## 6.3 Carbohydrates [i](#)

There are no monosaccharides in this entry.

## 6.4 Ligands [i](#)

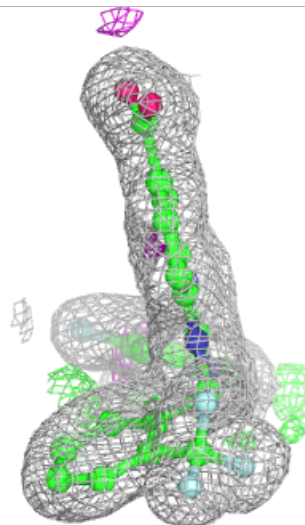
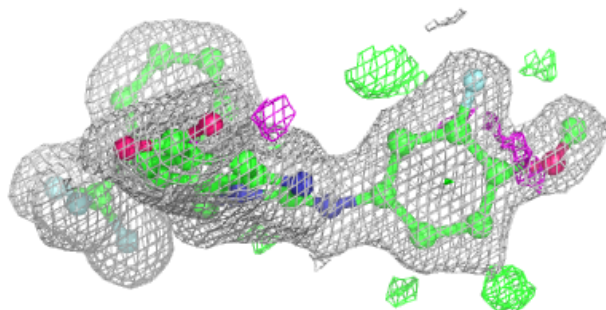
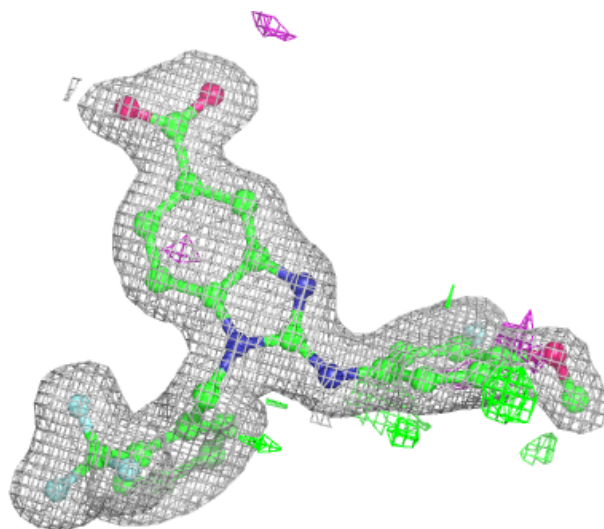
In the following table, the Atoms column lists the number of modelled atoms in the group and the number defined in the chemical component dictionary. The B-factors column lists the minimum, median, 95<sup>th</sup> percentile and maximum values of B factors of atoms in the group. The column labelled 'Q < 0.9' lists the number of atoms with occupancy less than 0.9.

Mol	Type	Chain	Res	Atoms	RSCC	RSR	B-factors( $\text{\AA}^2$ )	Q < 0.9
6	PEG	A	1369	4/7	0.88	0.15	30,35,41,46	0
5	EPE	A	1368	15/15	0.90	0.24	39,54,73,77	0
4	4A2	A	1367	33/33	0.92	0.09	21,29,42,45	0
4	4A2	A	1366	33/33	0.97	0.08	15,18,23,26	0
2	ADP	A	1364	27/27	0.99	0.09	12,16,22,26	0
3	MG	A	1365	1/1	1.00	0.12	15,15,15,15	0

The following is a graphical depiction of the model fit to experimental electron density of all instances of the Ligand of Interest. In addition, ligands with molecular weight > 250 and outliers as shown on the geometry validation Tables will also be included. Each fit is shown from different orientation to approximate a three-dimensional view.

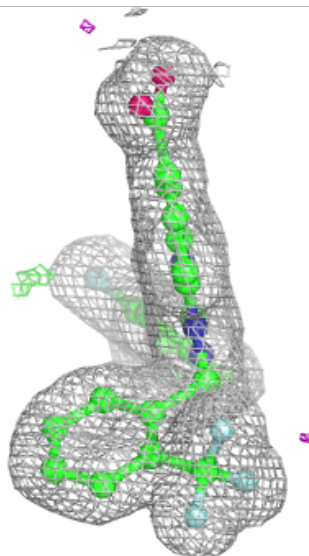
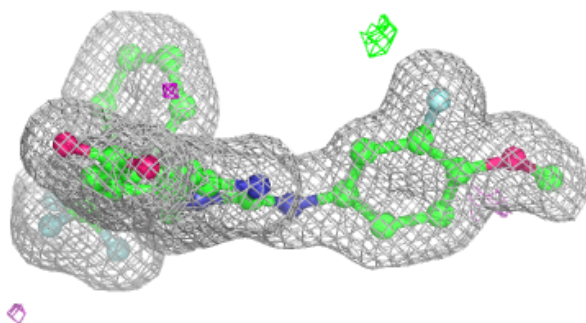
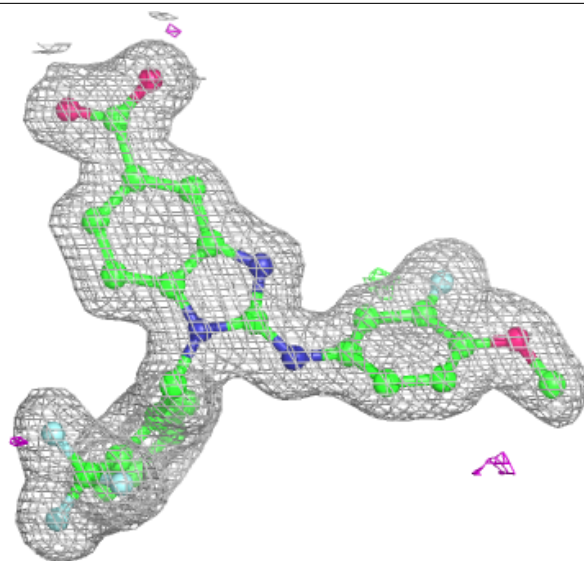
**Electron density around 4A2 A 1367:**

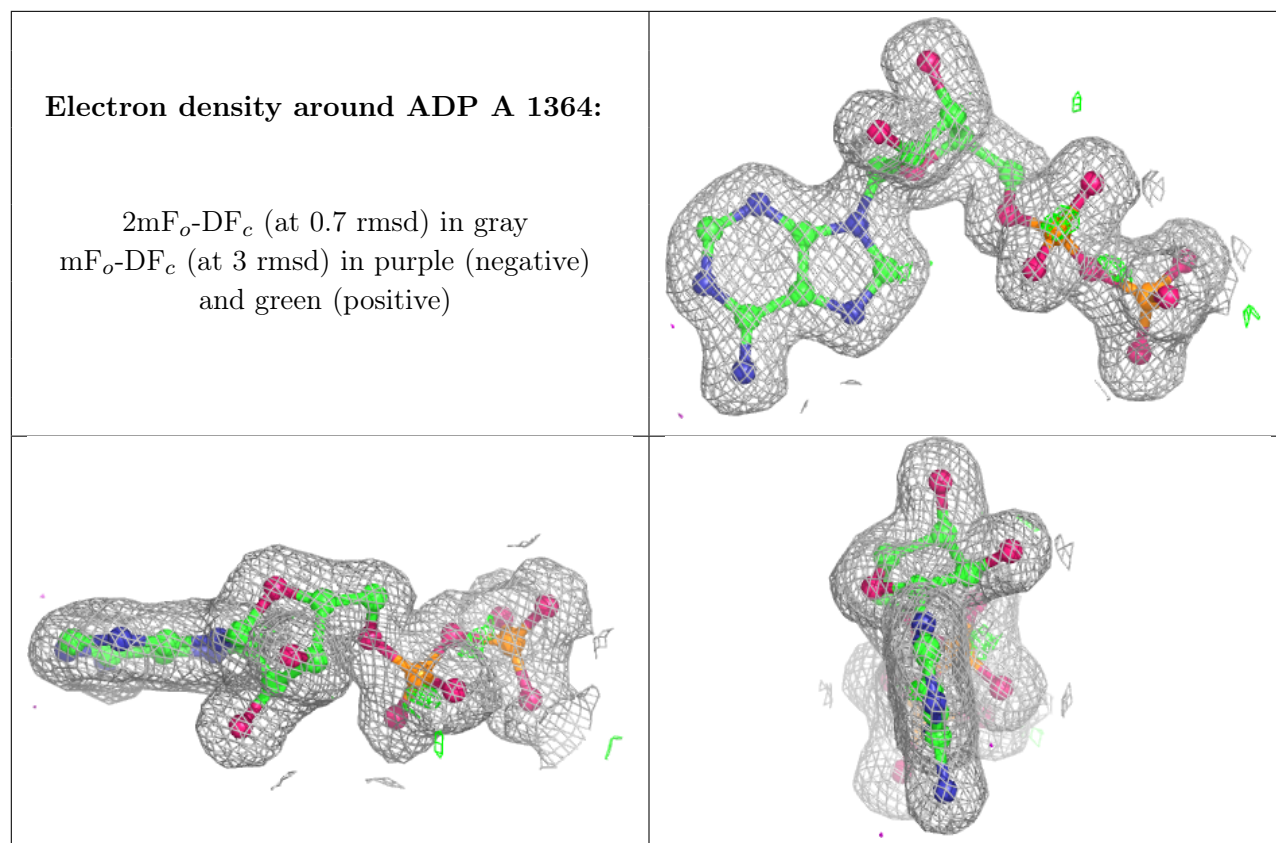
$2mF_o-DF_c$  (at 0.7 rmsd) in gray  
 $mF_o-DF_c$  (at 3 rmsd) in purple (negative)  
and green (positive)



**Electron density around 4A2 A 1366:**

$2mF_o-DF_c$  (at 0.7 rmsd) in gray  
 $mF_o-DF_c$  (at 3 rmsd) in purple (negative)  
and green (positive)





## 6.5 Other polymers [i](#)

There are no such residues in this entry.