



Full wwPDB X-ray Structure Validation Report ⓘ

Jun 18, 2024 – 09:46 PM EDT

PDB ID : 3WLP
Title : Crystal Structure Analysis of Plant Exohydrolase
Authors : Streltsov, V.A.; Luang, S.; Hrmova, M.
Deposited on : 2013-11-12
Resolution : 1.57 Å(reported)

This is a Full wwPDB X-ray Structure Validation Report for a publicly released PDB entry.

We welcome your comments at validation@mail.wwpdb.org

A user guide is available at

<https://www.wwpdb.org/validation/2017/XrayValidationReportHelp>

with specific help available everywhere you see the ⓘ symbol.

The types of validation reports are described at

<http://www.wwpdb.org/validation/2017/FAQs#types>.

The following versions of software and data (see [references ⓘ](#)) were used in the production of this report:

MolProbity : 4.02b-467
Mogul : 2022.3.0, CSD as543be (2022)
Xtriage (Phenix) : 1.20.1
EDS : 2.37.1
Percentile statistics : 20191225.v01 (using entries in the PDB archive December 25th 2019)
Refmac : 5.8.0158
CCP4 : 7.0.044 (Gargrove)
Ideal geometry (proteins) : Engh & Huber (2001)
Ideal geometry (DNA, RNA) : Parkinson et al. (1996)
Validation Pipeline (wwPDB-VP) : 2.37.1

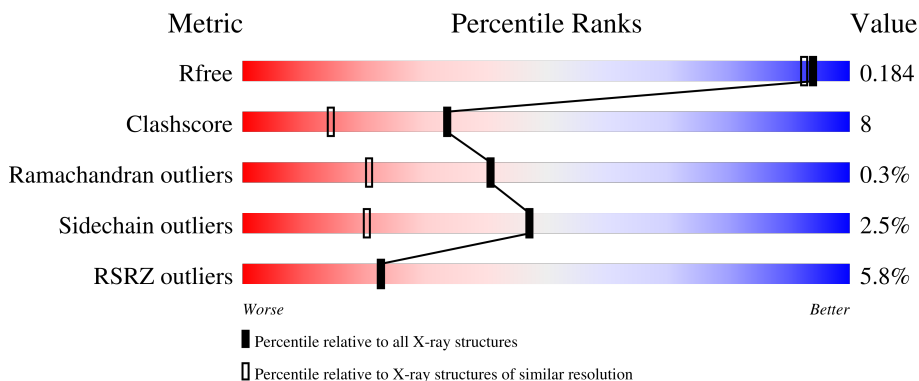
1 Overall quality at a glance

The following experimental techniques were used to determine the structure:

X-RAY DIFFRACTION

The reported resolution of this entry is 1.57 Å.

Percentile scores (ranging between 0-100) for global validation metrics of the entry are shown in the following graphic. The table shows the number of entries on which the scores are based.



Metric	Whole archive (#Entries)	Similar resolution (#Entries, resolution range(Å))
R_{free}	130704	5534 (1.60-1.56)
Clashscore	141614	5861 (1.60-1.56)
Ramachandran outliers	138981	5708 (1.60-1.56)
Sidechain outliers	138945	5703 (1.60-1.56)
RSRZ outliers	127900	5431 (1.60-1.56)

The table below summarises the geometric issues observed across the polymeric chains and their fit to the electron density. The red, orange, yellow and green segments of the lower bar indicate the fraction of residues that contain outliers for ≥ 3 , 2, 1 and 0 types of geometric quality criteria respectively. A grey segment represents the fraction of residues that are not modelled. The numeric value for each fraction is indicated below the corresponding segment, with a dot representing fractions $\leq 5\%$. The upper red bar (where present) indicates the fraction of residues that have poor fit to the electron density. The numeric value is given above the bar.

Mol	Chain	Length	Quality of chain
1	A	605	 6% 86% 12%
2	B	2	 50% 50%

The following table lists non-polymeric compounds, carbohydrate monomers and non-standard residues in protein, DNA, RNA chains that are outliers for geometric or electron-density-fit criteria:

Mol	Type	Chain	Res	Chirality	Geometry	Clashes	Electron density
4	GOL	A	709	-	-	X	-

2 Entry composition [i](#)

There are 6 unique types of molecules in this entry. The entry contains 5588 atoms, of which 0 are hydrogens and 0 are deuteriums.

In the tables below, the ZeroOcc column contains the number of atoms modelled with zero occupancy, the AltConf column contains the number of residues with at least one atom in alternate conformation and the Trace column contains the number of residues modelled with at most 2 atoms.

- Molecule 1 is a protein called Beta-D-glucan exohydrolase isoenzyme ExoI.

Mol	Chain	Residues	Atoms					ZeroOcc	AltConf	Trace
			Total	C	N	O	S			
1	A	602	4626	2919	807	871	29	0	22	0

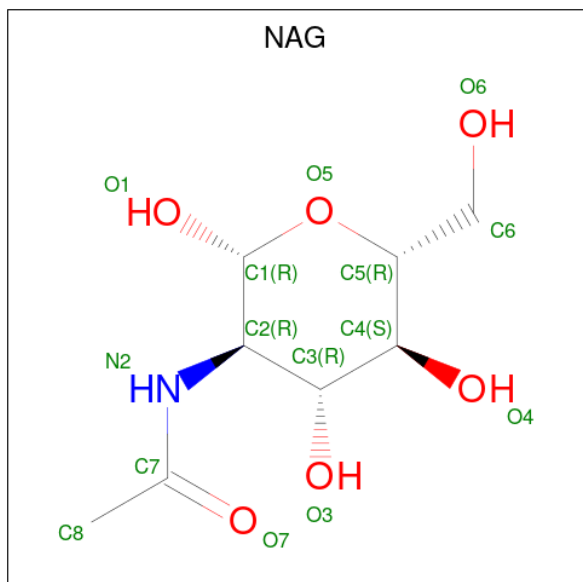
There is a discrepancy between the modelled and reference sequences:

Chain	Residue	Modelled	Actual	Comment	Reference
A	320	LYS	ASN	SEE REMARK 999	UNP Q9XEI3

- Molecule 2 is an oligosaccharide called 1-thio-beta-D-glucopyranose-(1-6)-methyl beta-D-glucopyranoside.

Mol	Chain	Residues	Atoms				ZeroOcc	AltConf	Trace
			Total	C	O	S			
2	B	2	25	14	10	1	0	1	0

- Molecule 3 is 2-acetamido-2-deoxy-beta-D-glucopyranose (three-letter code: NAG) (formula: $C_8H_{15}NO_6$).



Mol	Chain	Residues	Atoms				ZeroOcc	AltConf
			Total	C	N	O		
3	A	1	14	8	1	5	0	0

- Molecule 4 is GLYCEROL (three-letter code: GOL) (formula: $C_3H_8O_3$).



Mol	Chain	Residues	Atoms			ZeroOcc	AltConf
			Total	C	O		
4	A	1	6	3	3	0	0
4	A	1	6	3	3	0	0
4	A	1	6	3	3	0	0
4	A	1	6	3	3	0	0
4	A	1	6	3	3	0	0
4	A	1	6	3	3	0	0
4	A	1	6	3	3	0	0
4	A	1	6	3	3	0	0
4	A	1	6	3	3	0	0
4	A	1	6	3	3	0	0

- Molecule 5 is SULFATE ION (three-letter code: SO4) (formula: O_4S).



Mol	Chain	Residues	Atoms	ZeroOcc	AltConf
5	A	1	Total O S 5 4 1	0	0
5	A	1	Total O S 5 4 1	0	0

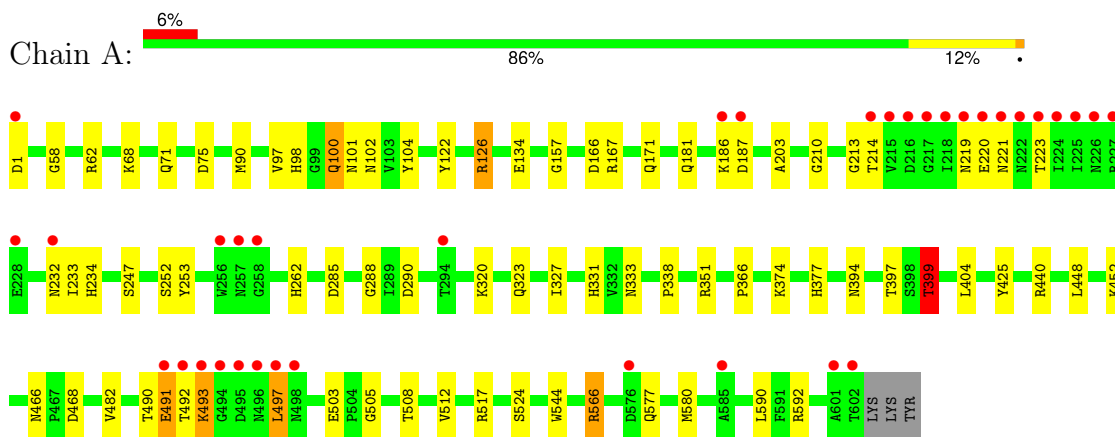
- Molecule 6 is water.

Mol	Chain	Residues	Atoms	ZeroOcc	AltConf
6	A	853	Total O 853 853	0	0

3 Residue-property plots [i](#)

These plots are drawn for all protein, RNA, DNA and oligosaccharide chains in the entry. The first graphic for a chain summarises the proportions of the various outlier classes displayed in the second graphic. The second graphic shows the sequence view annotated by issues in geometry and electron density. Residues are color-coded according to the number of geometric quality criteria for which they contain at least one outlier: green = 0, yellow = 1, orange = 2 and red = 3 or more. A red dot above a residue indicates a poor fit to the electron density ($RSRZ > 2$). Stretches of 2 or more consecutive residues without any outlier are shown as a green connector. Residues present in the sample, but not in the model, are shown in grey.

- Molecule 1: Beta-D-glucan exohydrolase isoenzyme ExoI



- Molecule 2: 1-thio-beta-D-glucopyranose-(1-6)-methyl beta-D-glucopyranoside



4 Data and refinement statistics

Property	Value	Source
Space group	P 43 21 2	Depositor
Cell constants a, b, c, α , β , γ	99.94Å 99.94Å 182.87Å 90.00° 90.00° 90.00°	Depositor
Resolution (Å)	25.41 – 1.57 25.41 – 1.57	Depositor EDS
% Data completeness (in resolution range)	97.1 (25.41-1.57) 97.1 (25.41-1.57)	Depositor EDS
R_{merge}	(Not available)	Depositor
R_{sym}	(Not available)	Depositor
$\langle I/\sigma(I) \rangle$ ¹	6.38 (at 1.57Å)	Xtrriage
Refinement program	REFMAC 5.7.0032	Depositor
R, R_{free}	0.162 , 0.183 0.163 , 0.184	Depositor DCC
R_{free} test set	6274 reflections (5.03%)	wwPDB-VP
Wilson B-factor (Å ²)	17.5	Xtrriage
Anisotropy	0.005	Xtrriage
Bulk solvent k_{sol} (e/Å ³), B_{sol} (Å ²)	0.39 , 59.6	EDS
L-test for twinning ²	$\langle L \rangle = 0.50$, $\langle L^2 \rangle = 0.34$	Xtrriage
Estimated twinning fraction	No twinning to report.	Xtrriage
F_o, F_c correlation	0.97	EDS
Total number of atoms	5588	wwPDB-VP
Average B, all atoms (Å ²)	23.0	wwPDB-VP

Xtrriage's analysis on translational NCS is as follows: *The largest off-origin peak in the Patterson function is 3.47% of the height of the origin peak. No significant pseudotranslation is detected.*

¹Intensities estimated from amplitudes.

²Theoretical values of $\langle |L| \rangle$, $\langle L^2 \rangle$ for acentric reflections are 0.5, 0.333 respectively for untwinned datasets, and 0.375, 0.2 for perfectly twinned datasets.

5 Model quality i

5.1 Standard geometry i

Bond lengths and bond angles in the following residue types are not validated in this section: GS1, NAG, MGL, SO4, GOL

The Z score for a bond length (or angle) is the number of standard deviations the observed value is removed from the expected value. A bond length (or angle) with $|Z| > 5$ is considered an outlier worth inspection. RMSZ is the root-mean-square of all Z scores of the bond lengths (or angles).

Mol	Chain	Bond lengths		Bond angles	
		RMSZ	# Z >5	RMSZ	# Z >5
1	A	0.80	1/4833 (0.0%)	0.94	14/6556 (0.2%)

Chiral center outliers are detected by calculating the chiral volume of a chiral center and verifying if the center is modelled as a planar moiety or with the opposite hand. A planarity outlier is detected by checking planarity of atoms in a peptide group, atoms in a mainchain group or atoms of a sidechain that are expected to be planar.

Mol	Chain	#Chirality outliers	#Planarity outliers
1	A	0	1

All (1) bond length outliers are listed below:

Mol	Chain	Res	Type	Atoms	Z	Observed(Å)	Ideal(Å)
1	A	503	GLU	CD-OE2	5.43	1.31	1.25

All (14) bond angle outliers are listed below:

Mol	Chain	Res	Type	Atoms	Z	Observed(°)	Ideal(°)
1	A	126	ARG	NE-CZ-NH2	-14.88	112.86	120.30
1	A	126	ARG	NE-CZ-NH1	14.20	127.40	120.30
1	A	351	ARG	NE-CZ-NH1	9.86	125.23	120.30
1	A	425	TYR	CB-CG-CD2	-6.37	117.18	121.00
1	A	351	ARG	NE-CZ-NH2	-6.02	117.29	120.30
1	A	75	ASP	CB-CG-OD2	-5.71	113.16	118.30
1	A	104	TYR	CB-CG-CD2	-5.62	117.63	121.00
1	A	566[A]	ARG	NE-CZ-NH2	-5.52	117.54	120.30
1	A	566[B]	ARG	NE-CZ-NH2	-5.52	117.54	120.30
1	A	126	ARG	CD-NE-CZ	5.28	130.99	123.60
1	A	166	ASP	CB-CG-OD1	5.22	123.00	118.30
1	A	399[A]	THR	OG1-CB-CG2	5.10	121.73	110.00

Continued on next page...

Continued from previous page...

Mol	Chain	Res	Type	Atoms	Z	Observed(°)	Ideal(°)
1	A	399[B]	THR	OG1-CB-CG2	5.10	121.73	110.00
1	A	468	ASP	CB-CG-OD2	5.09	122.88	118.30

There are no chirality outliers.

All (1) planarity outliers are listed below:

Mol	Chain	Res	Type	Group
1	A	213	GLY	Peptide

5.2 Too-close contacts [i](#)

In the following table, the Non-H and H(model) columns list the number of non-hydrogen atoms and hydrogen atoms in the chain respectively. The H(added) column lists the number of hydrogen atoms added and optimized by MolProbity. The Clashes column lists the number of clashes within the asymmetric unit, whereas Symm-Clashes lists symmetry-related clashes.

Mol	Chain	Non-H	H(model)	H(added)	Clashes	Symm-Clashes
1	A	4626	0	4606	72	0
2	B	25	0	17	1	0
3	A	14	0	13	0	0
4	A	60	0	80	15	0
5	A	10	0	0	0	0
6	A	853	0	0	27	5
All	All	5588	0	4716	81	5

The all-atom clashscore is defined as the number of clashes found per 1000 atoms (including hydrogen atoms). The all-atom clashscore for this structure is 8.

All (81) close contacts within the same asymmetric unit are listed below, sorted by their clash magnitude.

Atom-1	Atom-2	Interatomic distance (Å)	Clash overlap (Å)
1:A:68[A]:LYS:HD3	6:A:1177:HOH:O	1.61	0.98
1:A:68[A]:LYS:CD	6:A:1177:HOH:O	2.13	0.96
1:A:394:ASN:HD21	1:A:404:LEU:H	1.14	0.92
4:A:706:GOL:H11	6:A:861:HOH:O	1.72	0.89
4:A:708:GOL:HO1	4:A:709:GOL:HO3	1.12	0.88
1:A:466[A]:ASN:ND2	1:A:508:THR:OG1	2.10	0.84
1:A:210:GLY:O	1:A:223:THR:HG21	1.79	0.83
1:A:167:ARG:HH21	1:A:171:GLN:HE22	1.31	0.79

Continued on next page...

Continued from previous page...

Atom-1	Atom-2	Interatomic distance (Å)	Clash overlap (Å)
1:A:122:TYR:CE2	1:A:126:ARG:HD2	2.18	0.77
1:A:181:GLN:HE21	1:A:203:ALA:H	1.32	0.77
1:A:100:GLN:HE21	1:A:100:GLN:HA	1.50	0.75
1:A:517[B]:ARG:HG2	6:A:1278:HOH:O	1.86	0.73
1:A:482[B]:VAL:CG2	1:A:512:VAL:HG11	2.20	0.70
1:A:262:HIS:HE1	1:A:285:ASP:H	1.41	0.69
1:A:97:VAL:H	1:A:101:ASN:HD21	1.41	0.68
4:A:707:GOL:H31	6:A:868:HOH:O	1.94	0.67
1:A:219:ASN:ND2	1:A:220:GLU:HG3	2.09	0.66
1:A:167:ARG:HH21	1:A:171:GLN:NE2	1.95	0.64
1:A:577:GLN:HB3	1:A:580[B]:MET:SD	2.38	0.64
1:A:62:ARG:HD2	6:A:961:HOH:O	1.98	0.62
1:A:68[A]:LYS:HD2	6:A:1177:HOH:O	1.89	0.62
1:A:253:TYR:HB2	4:A:707:GOL:H32	1.81	0.62
4:A:713:GOL:H31	6:A:810:HOH:O	1.99	0.61
1:A:58:GLY:H	1:A:102:ASN:ND2	1.98	0.61
1:A:333[A]:ASN:HB2	6:A:945:HOH:O	2.00	0.60
1:A:100:GLN:HE21	1:A:100:GLN:CA	2.15	0.59
1:A:285:ASP:OD1	2:B:2:GS1:H1	2.03	0.59
1:A:333[A]:ASN:CB	6:A:945:HOH:O	2.50	0.59
1:A:262:HIS:CE1	1:A:285:ASP:H	2.19	0.58
4:A:708:GOL:HO1	4:A:709:GOL:C3	2.15	0.58
1:A:338:PRO:HB2	4:A:710:GOL:H12	1.86	0.58
1:A:167:ARG:NH2	1:A:171:GLN:HE22	2.02	0.57
1:A:97:VAL:H	1:A:101:ASN:ND2	2.01	0.57
1:A:134:GLU:OE2	1:A:377:HIS:HD2	1.88	0.56
1:A:397:THR:OG1	1:A:399[B]:THR:HG22	2.05	0.56
1:A:214:THR:CG2	1:A:223:THR:HG22	2.37	0.55
1:A:320:LYS:NZ	6:A:938:HOH:O	2.30	0.55
1:A:331:HIS:HD2	6:A:916:HOH:O	1.90	0.54
1:A:492:THR:O	1:A:493:LYS:HB3	2.09	0.53
1:A:482[B]:VAL:HG21	1:A:512:VAL:HG11	1.92	0.52
1:A:493:LYS:HB3	6:A:871:HOH:O	2.11	0.51
1:A:592:ARG:NE	6:A:1549:HOH:O	2.44	0.51
1:A:482[B]:VAL:HG22	1:A:512:VAL:HG11	1.93	0.50
1:A:220:GLU:HG2	1:A:253:TYR:CD2	2.47	0.50
1:A:490:THR:O	1:A:491:GLU:C	2.49	0.49
4:A:708:GOL:O1	4:A:709:GOL:O3	2.00	0.49
1:A:122:TYR:CZ	1:A:126:ARG:HD2	2.47	0.49
1:A:214:THR:HG22	1:A:223:THR:HG22	1.94	0.49
4:A:706:GOL:O3	6:A:1580:HOH:O	2.20	0.48

Continued on next page...

Continued from previous page...

Atom-1	Atom-2	Interatomic distance (Å)	Clash overlap (Å)
1:A:234:HIS:HD2	6:A:955:HOH:O	1.96	0.48
1:A:377:HIS:HE1	6:A:903:HOH:O	1.95	0.48
1:A:1:ASP:N	6:A:1632:HOH:O	2.46	0.48
1:A:566[A]:ARG:NH2	6:A:1572:HOH:O	2.47	0.48
1:A:71:GLN:HE22	1:A:366:PRO:HA	1.78	0.47
1:A:493:LYS:O	1:A:493:LYS:HG2	2.13	0.47
1:A:219:ASN:CG	1:A:491:GLU:HB3	2.36	0.45
1:A:592:ARG:HD3	4:A:712:GOL:O1	2.16	0.45
1:A:234:HIS:HE1	6:A:950:HOH:O	1.98	0.45
1:A:492:THR:O	1:A:493:LYS:CB	2.65	0.44
4:A:709:GOL:C1	6:A:1506:HOH:O	2.64	0.44
1:A:333[A]:ASN:HB3	6:A:945:HOH:O	2.17	0.44
1:A:181:GLN:HE22	1:A:247:SER:H	1.66	0.44
1:A:590:LEU:O	4:A:712:GOL:H31	2.18	0.43
1:A:157:GLY:HA3	1:A:491:GLU:HA	2.00	0.43
1:A:320:LYS:HE3	6:A:826:HOH:O	2.19	0.43
1:A:323:GLN:HE21	1:A:327:ILE:HD11	1.82	0.43
1:A:232[B]:ASN:OD1	1:A:233:ILE:HG13	2.19	0.42
1:A:252:SER:OG	4:A:707:GOL:O2	2.36	0.42
1:A:262:HIS:CE1	1:A:288:GLY:HA3	2.54	0.42
1:A:399[B]:THR:CG2	6:A:897:HOH:O	2.66	0.42
1:A:262:HIS:HE1	1:A:285:ASP:N	2.13	0.42
1:A:181:GLN:HE22	1:A:247:SER:N	2.18	0.42
1:A:338:PRO:CB	4:A:710:GOL:H12	2.48	0.42
1:A:517[C]:ARG:NE	6:A:875:HOH:O	2.21	0.41
1:A:524:SER:O	1:A:544:TRP:HA	2.20	0.41
1:A:448:LEU:HD11	1:A:452[A]:LYS:HE3	2.03	0.41
1:A:517[C]:ARG:HD3	6:A:1278:HOH:O	2.20	0.41
4:A:709:GOL:H12	6:A:1506:HOH:O	2.20	0.40
1:A:181:GLN:NE2	1:A:203:ALA:H	2.09	0.40

All (5) symmetry-related close contacts are listed below. The label for Atom-2 includes the symmetry operator and encoded unit-cell translations to be applied.

Atom-1	Atom-2	Interatomic distance (Å)	Clash overlap (Å)
6:A:808:HOH:O	6:A:1056:HOH:O[6_555]	1.23	0.97
6:A:961:HOH:O	6:A:1196:HOH:O[3_554]	1.44	0.76
6:A:962:HOH:O	6:A:1163:HOH:O[3_554]	1.48	0.72
6:A:962:HOH:O	6:A:1383:HOH:O[3_554]	2.16	0.04
6:A:944:HOH:O	6:A:1330:HOH:O[8_655]	2.17	0.03

5.3 Torsion angles [i](#)

5.3.1 Protein backbone [i](#)

In the following table, the Percentiles column shows the percent Ramachandran outliers of the chain as a percentile score with respect to all X-ray entries followed by that with respect to entries of similar resolution.

The Analysed column shows the number of residues for which the backbone conformation was analysed, and the total number of residues.

Mol	Chain	Analysed	Favoured	Allowed	Outliers	Percentiles
1	A	620/605 (102%)	604 (97%)	14 (2%)	2 (0%)	41 21

All (2) Ramachandran outliers are listed below:

Mol	Chain	Res	Type
1	A	493	LYS
1	A	505	GLY

5.3.2 Protein sidechains [i](#)

In the following table, the Percentiles column shows the percent sidechain outliers of the chain as a percentile score with respect to all X-ray entries followed by that with respect to entries of similar resolution.

The Analysed column shows the number of residues for which the sidechain conformation was analysed, and the total number of residues.

Mol	Chain	Analysed	Rotameric	Outliers	Percentiles
1	A	505/488 (104%)	492 (97%)	13 (3%)	46 19

All (13) residues with a non-rotameric sidechain are listed below:

Mol	Chain	Res	Type
1	A	90	MET
1	A	98	HIS
1	A	100	GLN
1	A	186	LYS
1	A	187	ASP
1	A	221	ASN
1	A	290	ASP
1	A	374	LYS
1	A	399[A]	THR

Continued on next page...

Continued from previous page...

Mol	Chain	Res	Type
1	A	399[B]	THR
1	A	440[A]	ARG
1	A	491	GLU
1	A	497[B]	LEU

Sometimes sidechains can be flipped to improve hydrogen bonding and reduce clashes. All (14) such sidechains are listed below:

Mol	Chain	Res	Type
1	A	71	GLN
1	A	100	GLN
1	A	101	ASN
1	A	102	ASN
1	A	112	ASN
1	A	171	GLN
1	A	181	GLN
1	A	199	ASN
1	A	221	ASN
1	A	234	HIS
1	A	262	HIS
1	A	331	HIS
1	A	377	HIS
1	A	394	ASN

5.3.3 RNA [i](#)

There are no RNA molecules in this entry.

5.4 Non-standard residues in protein, DNA, RNA chains [i](#)

There are no non-standard protein/DNA/RNA residues in this entry.

5.5 Carbohydrates [i](#)

3 monosaccharides are modelled in this entry.

In the following table, the Counts columns list the number of bonds (or angles) for which Mogul statistics could be retrieved, the number of bonds (or angles) that are observed in the model and the number of bonds (or angles) that are defined in the Chemical Component Dictionary. The Link column lists molecule types, if any, to which the group is linked. The Z score for a bond length (or angle) is the number of standard deviations the observed value is removed from the

expected value. A bond length (or angle) with $|Z| > 2$ is considered an outlier worth inspection. RMSZ is the root-mean-square of all Z scores of the bond lengths (or angles).

Mol	Type	Chain	Res	Link	Bond lengths			Bond angles		
					Counts	RMSZ	# $ Z > 2$	Counts	RMSZ	# $ Z > 2$
2	MGL	B	1[A]	-	12,12,13	0.97	1 (8%)	17,17,18	2.40	4 (23%)
2	MGL	B	1[B]	-	12,12,13	0.97	1 (8%)	17,17,18	2.21	4 (23%)
2	GS1	B	2	2	11,12,12	0.83	0	15,17,17	0.91	1 (6%)

In the following table, the Chirals column lists the number of chiral outliers, the number of chiral centers analysed, the number of these observed in the model and the number defined in the Chemical Component Dictionary. Similar counts are reported in the Torsion and Rings columns. '-' means no outliers of that kind were identified.

Mol	Type	Chain	Res	Link	Chirals	Torsions	Rings
2	MGL	B	1[A]	-	-	2/2/22/24	0/1/1/1
2	MGL	B	1[B]	-	-	0/2/22/24	0/1/1/1
2	GS1	B	2	2	-	0/2/22/22	0/1/1/1

All (2) bond length outliers are listed below:

Mol	Chain	Res	Type	Atoms	Z	Observed(Å)	Ideal(Å)
2	B	1[A]	MGL	O1-C1	2.90	1.45	1.40
2	B	1[B]	MGL	O1-C1	2.90	1.45	1.40

All (9) bond angle outliers are listed below:

Mol	Chain	Res	Type	Atoms	Z	Observed(°)	Ideal(°)
2	B	1[A]	MGL	C7-O1-C1	5.99	122.36	113.26
2	B	1[A]	MGL	O1-C1-C2	5.22	114.17	108.14
2	B	1[B]	MGL	O1-C1-C2	5.22	114.17	108.14
2	B	1[A]	MGL	O5-C1-O1	-4.71	99.98	110.94
2	B	1[B]	MGL	O5-C1-O1	-4.71	99.98	110.94
2	B	1[B]	MGL	C7-O1-C1	4.57	120.20	113.26
2	B	1[A]	MGL	O3-C3-C2	-2.33	104.89	110.38
2	B	1[B]	MGL	O3-C3-C2	-2.33	104.89	110.38
2	B	2	GS1	O2-C2-C1	-2.09	106.59	110.30

There are no chirality outliers.

All (2) torsion outliers are listed below:

Mol	Chain	Res	Type	Atoms
2	B	1[A]	MGL	C2-C1-O1-C7

Continued on next page...

Continued from previous page...

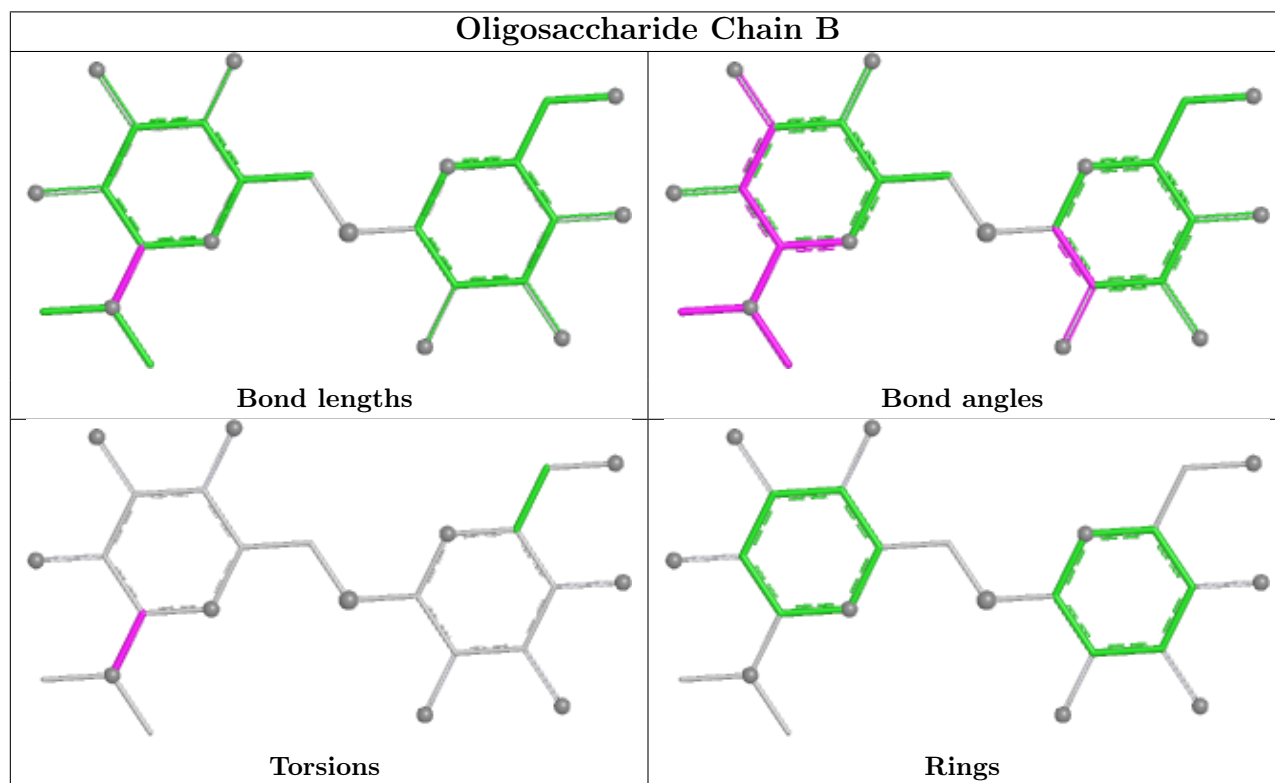
Mol	Chain	Res	Type	Atoms
2	B	1[A]	MGL	O5-C1-O1-C7

There are no ring outliers.

1 monomer is involved in 1 short contact:

Mol	Chain	Res	Type	Clashes	Symm-Clashes
2	B	2	GS1	1	0

The following is a two-dimensional graphical depiction of Mogul quality analysis of bond lengths, bond angles, torsion angles, and ring geometry for oligosaccharide.



5.6 Ligand geometry [i](#)

13 ligands are modelled in this entry.

In the following table, the Counts columns list the number of bonds (or angles) for which Mogul statistics could be retrieved, the number of bonds (or angles) that are observed in the model and the number of bonds (or angles) that are defined in the Chemical Component Dictionary. The Link column lists molecule types, if any, to which the group is linked. The Z score for a bond length (or angle) is the number of standard deviations the observed value is removed from the expected value. A bond length (or angle) with $|Z| > 2$ is considered an outlier worth inspection. RMSZ is the root-mean-square of all Z scores of the bond lengths (or angles).

Mol	Type	Chain	Res	Link	Bond lengths			Bond angles		
					Counts	RMSZ	# Z > 2	Counts	RMSZ	# Z > 2
4	GOL	A	708	-	5,5,5	0.21	0	5,5,5	0.63	0
4	GOL	A	710	-	5,5,5	0.19	0	5,5,5	1.09	1 (20%)
5	SO4	A	714	-	4,4,4	0.47	0	6,6,6	0.13	0
4	GOL	A	705	-	5,5,5	0.28	0	5,5,5	0.35	0
4	GOL	A	713	-	5,5,5	0.22	0	5,5,5	0.38	0
4	GOL	A	707	-	5,5,5	0.61	0	5,5,5	0.80	0
4	GOL	A	712	-	5,5,5	0.29	0	5,5,5	0.70	0
3	NAG	A	701	1	14,14,15	0.46	0	17,19,21	1.17	2 (11%)
4	GOL	A	709	-	5,5,5	0.32	0	5,5,5	0.65	0
4	GOL	A	704	-	5,5,5	0.31	0	5,5,5	0.30	0
4	GOL	A	711	-	5,5,5	0.28	0	5,5,5	0.26	0
4	GOL	A	706	-	5,5,5	0.38	0	5,5,5	0.52	0
5	SO4	A	715	-	4,4,4	0.43	0	6,6,6	0.13	0

In the following table, the Chirals column lists the number of chiral outliers, the number of chiral centers analysed, the number of these observed in the model and the number defined in the Chemical Component Dictionary. Similar counts are reported in the Torsion and Rings columns. '-' means no outliers of that kind were identified.

Mol	Type	Chain	Res	Link	Chirals	Torsions	Rings
4	GOL	A	708	-	-	2/4/4/4	-
4	GOL	A	710	-	-	4/4/4/4	-
4	GOL	A	705	-	-	2/4/4/4	-
4	GOL	A	713	-	-	1/4/4/4	-
4	GOL	A	707	-	-	2/4/4/4	-
4	GOL	A	712	-	-	1/4/4/4	-
3	NAG	A	701	1	-	0/6/23/26	0/1/1/1
4	GOL	A	709	-	-	4/4/4/4	-
4	GOL	A	704	-	-	2/4/4/4	-
4	GOL	A	711	-	-	2/4/4/4	-
4	GOL	A	706	-	-	2/4/4/4	-

There are no bond length outliers.

All (3) bond angle outliers are listed below:

Mol	Chain	Res	Type	Atoms	Z	Observed(°)	Ideal(°)
3	A	701	NAG	C1-O5-C5	3.19	116.46	112.19
3	A	701	NAG	C6-C5-C4	-2.27	107.45	113.02
4	A	710	GOL	C3-C2-C1	-2.20	103.73	111.80

There are no chirality outliers.

All (22) torsion outliers are listed below:

Mol	Chain	Res	Type	Atoms
4	A	705	GOL	O1-C1-C2-C3
4	A	706	GOL	C1-C2-C3-O3
4	A	708	GOL	O1-C1-C2-C3
4	A	709	GOL	O1-C1-C2-C3
4	A	709	GOL	C1-C2-C3-O3
4	A	710	GOL	O1-C1-C2-O2
4	A	710	GOL	O1-C1-C2-C3
4	A	710	GOL	C1-C2-C3-O3
4	A	708	GOL	O1-C1-C2-O2
4	A	711	GOL	O1-C1-C2-C3
4	A	712	GOL	C1-C2-C3-O3
4	A	705	GOL	O1-C1-C2-O2
4	A	706	GOL	O2-C2-C3-O3
4	A	709	GOL	O2-C2-C3-O3
4	A	710	GOL	O2-C2-C3-O3
4	A	709	GOL	O1-C1-C2-O2
4	A	711	GOL	O1-C1-C2-O2
4	A	707	GOL	O1-C1-C2-O2
4	A	713	GOL	O1-C1-C2-C3
4	A	707	GOL	O1-C1-C2-C3
4	A	704	GOL	O1-C1-C2-O2
4	A	704	GOL	O2-C2-C3-O3

There are no ring outliers.

7 monomers are involved in 15 short contacts:

Mol	Chain	Res	Type	Clashes	Symm-Clashes
4	A	708	GOL	3	0
4	A	710	GOL	2	0
4	A	713	GOL	1	0
4	A	707	GOL	3	0
4	A	712	GOL	2	0
4	A	709	GOL	5	0
4	A	706	GOL	2	0

5.7 Other polymers [i](#)

There are no such residues in this entry.

5.8 Polymer linkage issues

There are no chain breaks in this entry.

6 Fit of model and data [i](#)

6.1 Protein, DNA and RNA chains [i](#)

In the following table, the column labelled ‘#RSRZ> 2’ contains the number (and percentage) of RSRZ outliers, followed by percent RSRZ outliers for the chain as percentile scores relative to all X-ray entries and entries of similar resolution. The OWAB column contains the minimum, median, 95th percentile and maximum values of the occupancy-weighted average B-factor per residue. The column labelled ‘Q< 0.9’ lists the number of (and percentage) of residues with an average occupancy less than 0.9.

Mol	Chain	Analysed	<RSRZ>	#RSRZ>2	OWAB(Å ²)	Q<0.9
1	A	602/605 (99%)	-0.14	35 (5%) 23 23	11, 17, 37, 95	0

All (35) RSRZ outliers are listed below:

Mol	Chain	Res	Type	RSRZ
1	A	218	ILE	12.3
1	A	497[B]	LEU	9.9
1	A	214	THR	8.3
1	A	224	ILE	8.1
1	A	215	VAL	6.9
1	A	216	ASP	6.2
1	A	493	LYS	6.0
1	A	492	THR	5.8
1	A	217	GLY	5.8
1	A	219	ASN	5.6
1	A	585	ALA	5.3
1	A	220	GLU	4.9
1	A	186	LYS	4.9
1	A	225	ILE	4.4
1	A	228	GLU	4.3
1	A	496	ASN	4.3
1	A	227	ARG	4.2
1	A	258	GLY	4.2
1	A	256	TRP	4.1
1	A	187	ASP	3.9
1	A	226	ASN	3.7
1	A	257	ASN	3.7
1	A	494	GLY	3.7
1	A	221	ASN	3.1
1	A	222	ASN	3.0
1	A	602	THR	2.8
1	A	1	ASP	2.8

Continued on next page...

Continued from previous page...

Mol	Chain	Res	Type	RSRZ
1	A	232[A]	ASN	2.5
1	A	294	THR	2.5
1	A	223	THR	2.4
1	A	495	ASP	2.2
1	A	491	GLU	2.1
1	A	498	ASN	2.1
1	A	601	ALA	2.1
1	A	576	ASP	2.1

6.2 Non-standard residues in protein, DNA, RNA chains [i](#)

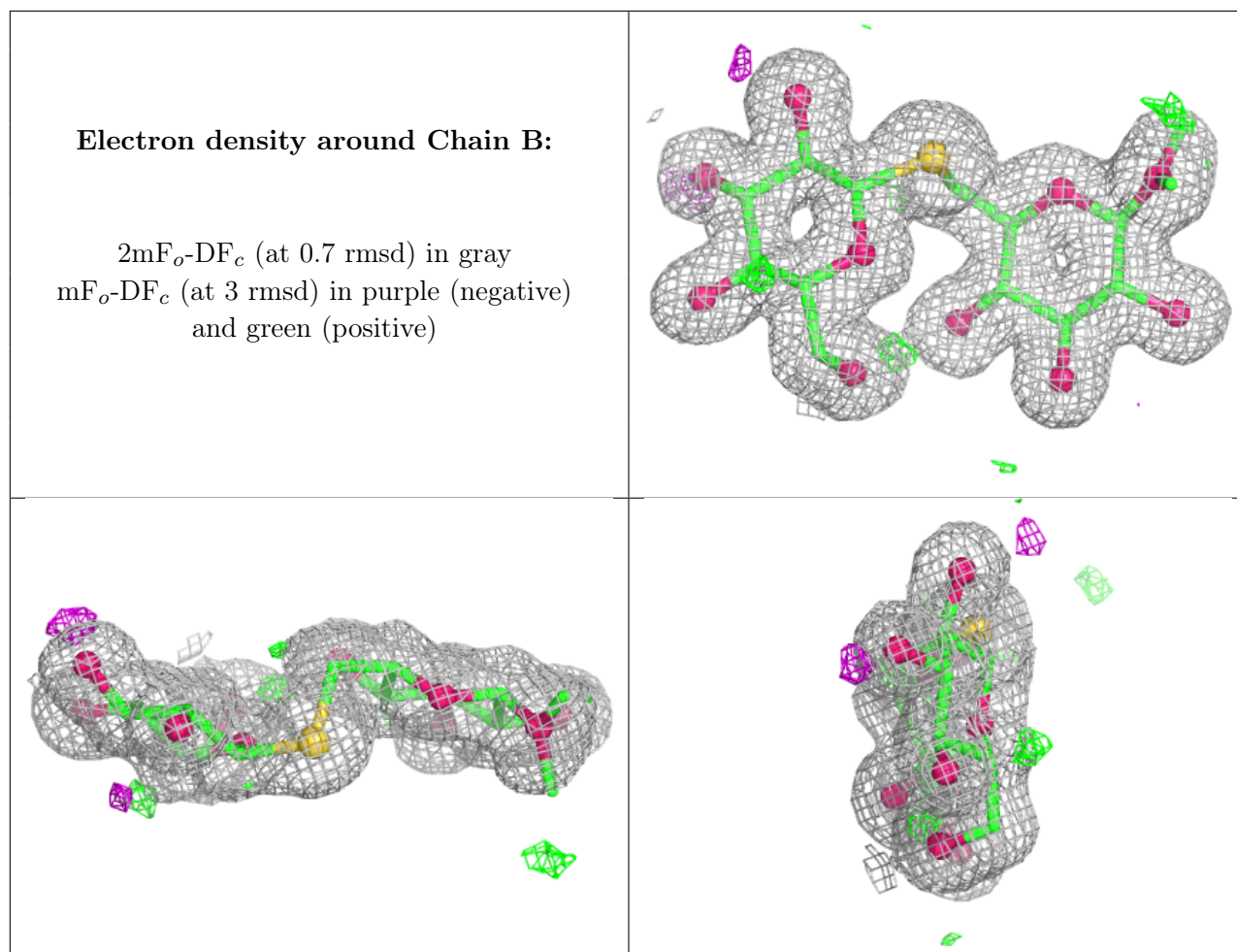
There are no non-standard protein/DNA/RNA residues in this entry.

6.3 Carbohydrates [i](#)

In the following table, the Atoms column lists the number of modelled atoms in the group and the number defined in the chemical component dictionary. The B-factors column lists the minimum, median, 95th percentile and maximum values of B factors of atoms in the group. The column labelled 'Q< 0.9' lists the number of atoms with occupancy less than 0.9.

Mol	Type	Chain	Res	Atoms	RSCC	RSR	B-factors(Å ²)	Q<0.9
2	MGL	B	1[A]	12/13	0.97	0.06	14,16,20,24	1
2	MGL	B	1[B]	12/13	0.97	0.06	14,16,19,20	1
2	GS1	B	2	12/12	0.98	0.05	13,14,14,16	0

The following is a graphical depiction of the model fit to experimental electron density for oligosaccharide. Each fit is shown from different orientation to approximate a three-dimensional view.



6.4 Ligands [i](#)

In the following table, the Atoms column lists the number of modelled atoms in the group and the number defined in the chemical component dictionary. The B-factors column lists the minimum, median, 95th percentile and maximum values of B factors of atoms in the group. The column labelled 'Q < 0.9' lists the number of atoms with occupancy less than 0.9.

Mol	Type	Chain	Res	Atoms	RSCC	RSR	B-factors(Å ²)	Q<0.9
4	GOL	A	704	6/6	0.60	0.23	65,68,70,71	0
4	GOL	A	705	6/6	0.68	0.22	57,63,65,65	0
4	GOL	A	706	6/6	0.69	0.24	41,45,47,47	0
4	GOL	A	713	6/6	0.71	0.34	53,63,66,70	0
4	GOL	A	709	6/6	0.73	0.12	46,49,50,51	0
3	NAG	A	701	14/15	0.76	0.32	40,46,53,59	0
4	GOL	A	712	6/6	0.79	0.25	39,50,52,60	0
4	GOL	A	711	6/6	0.80	0.32	58,60,62,63	0
4	GOL	A	708	6/6	0.82	0.26	40,41,45,48	0
4	GOL	A	710	6/6	0.84	0.27	28,42,46,57	0
5	SO4	A	714	5/5	0.86	0.24	92,92,95,100	0

Continued on next page...

Continued from previous page...

Mol	Type	Chain	Res	Atoms	RSCC	RSR	B-factors(\AA^2)	Q<0.9
4	GOL	A	707	6/6	0.89	0.16	22,30,44,46	0
5	SO4	A	715	5/5	0.93	0.14	73,77,78,78	0

6.5 Other polymers [i](#)

There are no such residues in this entry.