



Full wwPDB X-ray Structure Validation Report ⓘ

Nov 11, 2024 – 02:05 AM EST

PDB ID : 3W81
Title : Human alpha-l-iduronidase
Authors : Maita, N.; Tsukimura, T.; Taniguchi, T.; Saito, S.; Ohno, K.; Taniguchi, H.; Sakuraba, H.
Deposited on : 2013-03-11
Resolution : 2.30 Å(reported)

This is a Full wwPDB X-ray Structure Validation Report for a publicly released PDB entry.

We welcome your comments at validation@mail.wwpdb.org

A user guide is available at

<https://www.wwpdb.org/validation/2017/XrayValidationReportHelp>

with specific help available everywhere you see the ⓘ symbol.

The types of validation reports are described at

<http://www.wwpdb.org/validation/2017/FAQs#types>.

The following versions of software and data (see [references ⓘ](#)) were used in the production of this report:

MolProbity : 4.02b-467
Mogul : 2022.3.0, CSD as543be (2022)
Xtriage (Phenix) : 1.20.1
EDS : 3.0
Percentile statistics : 20231227.v01 (using entries in the PDB archive December 27th 2023)
CCP4 : 9.0.003 (Gargrove)
Density-Fitness : 1.0.11
Ideal geometry (proteins) : Engh & Huber (2001)
Ideal geometry (DNA, RNA) : Parkinson et al. (1996)
Validation Pipeline (wwPDB-VP) : 2.39

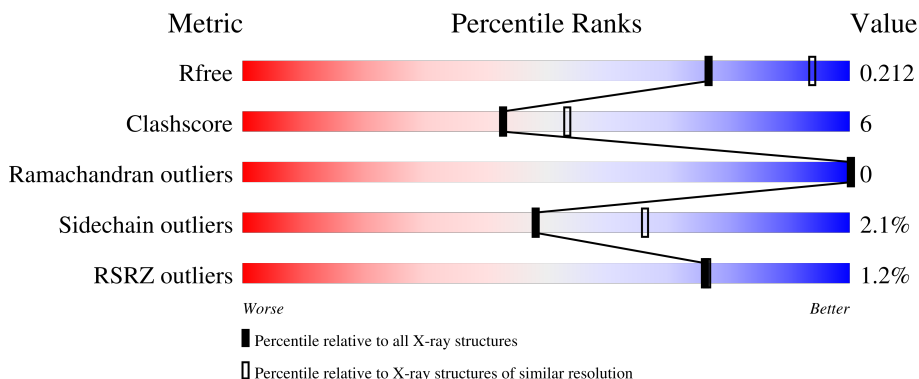
1 Overall quality at a glance i

The following experimental techniques were used to determine the structure:

X-RAY DIFFRACTION

The reported resolution of this entry is 2.30 Å.

Percentile scores (ranging between 0-100) for global validation metrics of the entry are shown in the following graphic. The table shows the number of entries on which the scores are based.



Metric	Whole archive (#Entries)	Similar resolution (#Entries, resolution range(Å))
R_{free}	164625	5963 (2.30-2.30)
Clashscore	180529	6698 (2.30-2.30)
Ramachandran outliers	177936	6640 (2.30-2.30)
Sidechain outliers	177891	6640 (2.30-2.30)
RSRZ outliers	164620	5963 (2.30-2.30)

The table below summarises the geometric issues observed across the polymeric chains and their fit to the electron density. The red, orange, yellow and green segments of the lower bar indicate the fraction of residues that contain outliers for ≥ 3 , 2, 1 and 0 types of geometric quality criteria respectively. A grey segment represents the fraction of residues that are not modelled. The numeric value for each fraction is indicated below the corresponding segment, with a dot representing fractions $\leq 5\%$. The upper red bar (where present) indicates the fraction of residues that have poor fit to the electron density. The numeric value is given above the bar.

Mol	Chain	Length	Quality of chain
1	A	627	 86% 12%
1	B	627	 86% 11%
2	C	10	 10% 80% 10%
3	D	2	 50% 50%
3	G	2	 100%

Continued on next page...

Continued from previous page...

Mol	Chain	Length	Quality of chain
4	E	9	
5	F	7	

The following table lists non-polymeric compounds, carbohydrate monomers and non-standard residues in protein, DNA, RNA chains that are outliers for geometric or electron-density-fit criteria:

Mol	Type	Chain	Res	Chirality	Geometry	Clashes	Electron density
10	CL	A	719	-	-	X	-
10	CL	B	727	-	-	X	-
8	GOL	B	722	-	-	X	-
9	PO4	B	724	-	-	X	-

2 Entry composition i

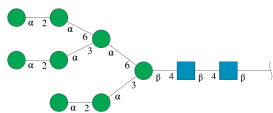
There are 12 unique types of molecules in this entry. The entry contains 10862 atoms, of which 0 are hydrogens and 0 are deuteriums.

In the tables below, the ZeroOcc column contains the number of atoms modelled with zero occupancy, the AltConf column contains the number of residues with at least one atom in alternate conformation and the Trace column contains the number of residues modelled with at most 2 atoms.

- Molecule 1 is a protein called Alpha-L-iduronidase.

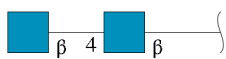
Mol	Chain	Residues	Atoms					ZeroOcc	AltConf	Trace
			Total	C	N	O	S			
1	A	616	Total 4885	C 3119	N 885	O 869	S 12	0	0	0
1	B	616	Total 4885	C 3119	N 885	O 869	S 12	0	0	0

- Molecule 2 is an oligosaccharide called alpha-D-mannopyranose-(1-2)-alpha-D-mannopyranose-(1-3)-[alpha-D-mannopyranose-(1-2)-alpha-D-mannopyranose-(1-6)]alpha-D-mannopyranose-(1-6)-[alpha-D-mannopyranose-(1-2)-alpha-D-mannopyranose-(1-3)]beta-D-mannopyranose-(1-4)-2-acetamido-2-deoxy-beta-D-glucopyranose-(1-4)-2-acetamido-2-deoxy-beta-D-glucopyranose.



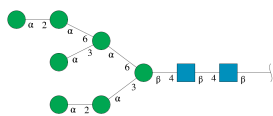
Mol	Chain	Residues	Atoms				ZeroOcc	AltConf	Trace
			Total	C	N	O			
2	C	10	Total 116	C 64	N 2	O 50	0	0	0

- Molecule 3 is an oligosaccharide called 2-acetamido-2-deoxy-beta-D-glucopyranose-(1-4)-2-acetamido-2-deoxy-beta-D-glucopyranose.



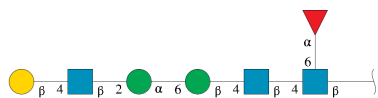
Mol	Chain	Residues	Atoms				ZeroOcc	AltConf	Trace
			Total	C	N	O			
3	D	2	Total 28	C 16	N 2	O 10	0	0	0
3	G	2	Total 28	C 16	N 2	O 10	0	0	0

- Molecule 4 is an oligosaccharide called alpha-D-mannopyranose-(1-2)-alpha-D-mannopyranose-(1-6)-[alpha-D-mannopyranose-(1-3)]alpha-D-mannopyranose-(1-6)-[alpha-D-mannopyranose-(1-2)-alpha-D-mannopyranose-(1-3)]beta-D-mannopyranose-(1-4)-2-acetamido-2-deoxy-beta-D-glucopyranose-(1-4)-2-acetamido-2-deoxy-beta-D-glucopyranose.



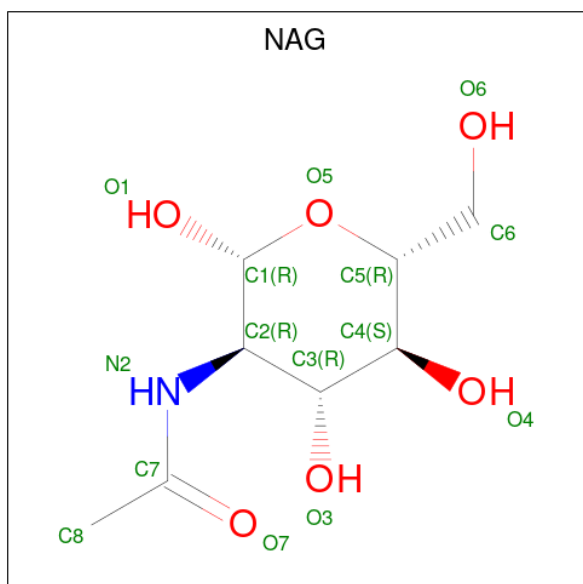
Mol	Chain	Residues	Atoms				ZeroOcc	AltConf	Trace
			Total	C	N	O			
4	E	9	105	58	2	45	0	0	0

- Molecule 5 is an oligosaccharide called beta-D-galactopyranose-(1-4)-2-acetamido-2-deoxy-beta-D-glucopyranose-(1-2)-alpha-D-mannopyranose-(1-6)-beta-D-mannopyranose-(1-4)-2-acetamido-2-deoxy-beta-D-glucopyranose-(1-4)-[alpha-L-fucopyranose-(1-6)]2-acetamido-2-deoxy-beta-D-glucopyranose.



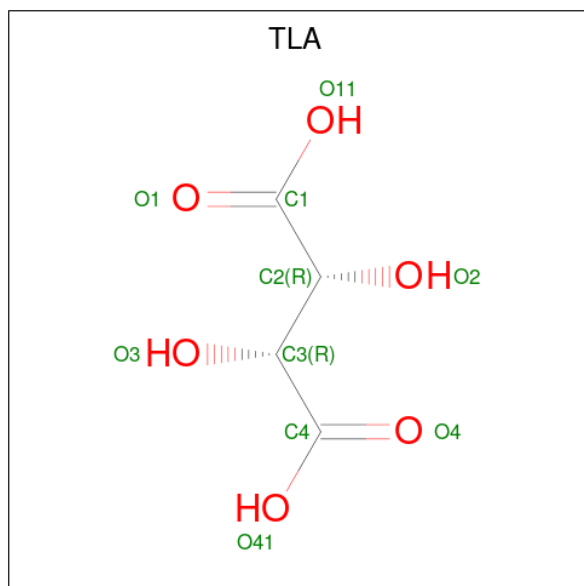
Mol	Chain	Residues	Atoms				ZeroOcc	AltConf	Trace
			Total	C	N	O			
5	F	7	85	48	3	34	0	0	0

- Molecule 6 is 2-acetamido-2-deoxy-beta-D-glucopyranose (three-letter code: NAG) (formula: C₈H₁₅NO₆).



Mol	Chain	Residues	Atoms				ZeroOcc	AltConf
6	A	1	Total	C	N	O	0	0
			14	8	1	5		
6	B	1	Total	C	N	O	0	0
			14	8	1	5		
6	B	1	Total	C	N	O	0	0
			14	8	1	5		

- Molecule 7 is L(+)-TARTARIC ACID (three-letter code: TLA) (formula: C₄H₆O₆).



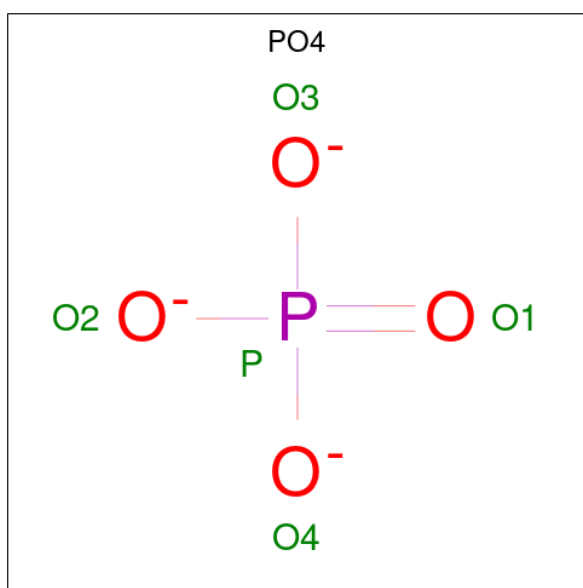
Mol	Chain	Residues	Atoms		ZeroOcc	AltConf
7	A	1	Total	C O	0	0
			10	4 6		
7	A	1	Total	C O	0	0
			10	4 6		
7	A	1	Total	C O	0	0
			10	4 6		
7	B	1	Total	C O	0	0
			10	4 6		

- Molecule 8 is GLYCEROL (three-letter code: GOL) (formula: C₃H₈O₃).



Mol	Chain	Residues	Atoms	ZeroOcc	AltConf
8	A	1	Total C O 6 3 3	0	0
8	B	1	Total C O 6 3 3	0	0

- Molecule 9 is PHOSPHATE ION (three-letter code: PO4) (formula: O₄P).



Mol	Chain	Residues	Atoms	ZeroOcc	AltConf
9	A	1	Total O P 5 4 1	0	0
9	B	1	Total O P 5 4 1	0	0

Continued on next page...

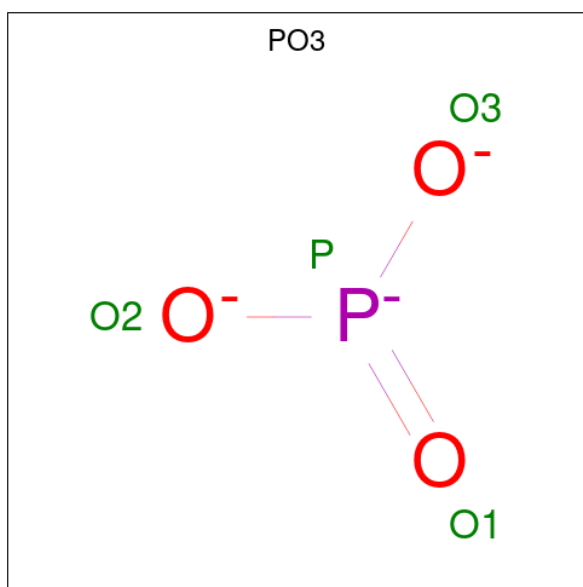
Continued from previous page...

Mol	Chain	Residues	Atoms	ZeroOcc	AltConf
9	B	1	Total O P 5 4 1	0	0
9	B	1	Total O P 5 4 1	0	0

- Molecule 10 is CHLORIDE ION (three-letter code: CL) (formula: Cl).

Mol	Chain	Residues	Atoms	ZeroOcc	AltConf
10	A	1	Total Cl 1 1	0	0
10	B	1	Total Cl 1 1	0	0

- Molecule 11 is PHOSPHITE ION (three-letter code: PO3) (formula: O₃P).



Mol	Chain	Residues	Atoms	ZeroOcc	AltConf
11	B	1	Total O P 4 3 1	0	0

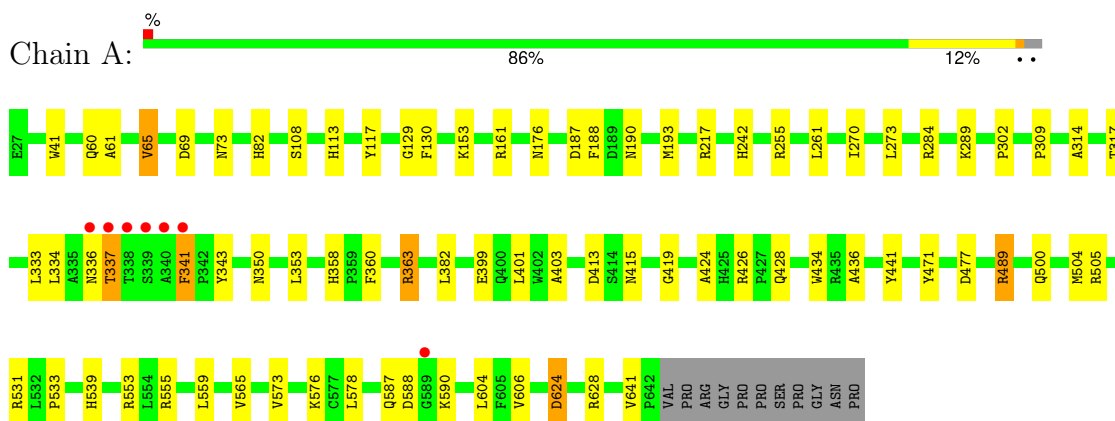
- Molecule 12 is water.

Mol	Chain	Residues	Atoms	ZeroOcc	AltConf
12	A	337	Total O 337 337	0	0
12	B	273	Total O 273 273	0	0

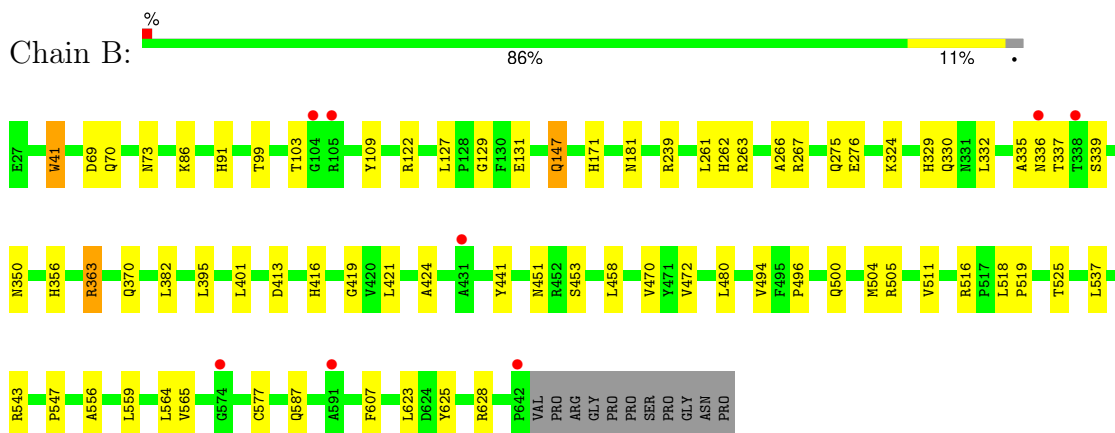
3 Residue-property plots [i](#)

These plots are drawn for all protein, RNA, DNA and oligosaccharide chains in the entry. The first graphic for a chain summarises the proportions of the various outlier classes displayed in the second graphic. The second graphic shows the sequence view annotated by issues in geometry and electron density. Residues are color-coded according to the number of geometric quality criteria for which they contain at least one outlier: green = 0, yellow = 1, orange = 2 and red = 3 or more. A red dot above a residue indicates a poor fit to the electron density ($RSRZ > 2$). Stretches of 2 or more consecutive residues without any outlier are shown as a green connector. Residues present in the sample, but not in the model, are shown in grey.

- Molecule 1: Alpha-L-iduronidase



- Molecule 1: Alpha-L-iduronidase



- Molecule 2: alpha-D-mannopyranose-(1-2)-alpha-D-mannopyranose-(1-3)-[alpha-D-mannopyranose-(1-2)-alpha-D-mannopyranose-(1-6)]alpha-D-mannopyranose-(1-6)-[alpha-D-mannopyranose-(1-2)-alpha-D-mannopyranose-(1-3)]beta-D-mannopyranose-(1-4)-2-acetamido-2-deoxy-beta-D-glucopyranose

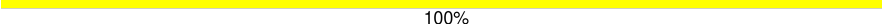


- Molecule 3: 2-acetamido-2-deoxy-beta-D-glucopyranose-(1-4)-2-acetamido-2-deoxy-beta-D-glucopyranose

Chain D:  50% 50%

MAG1
MAG2

- Molecule 3: 2-acetamido-2-deoxy-beta-D-glucopyranose-(1-4)-2-acetamido-2-deoxy-beta-D-glucopyranose

Chain G:  100%

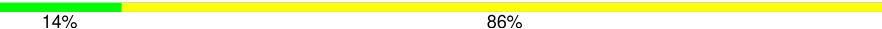
MAG1
MAG2

- Molecule 4: alpha-D-mannopyranose-(1-2)-alpha-D-mannopyranose-(1-6)-[alpha-D-mannopyranose-(1-3)]alpha-D-mannopyranose-(1-6)-[alpha-D-mannopyranose-(1-2)-alpha-D-mannopyranose-(1-3)]beta-D-mannopyranose-(1-4)-2-acetamido-2-deoxy-beta-D-glucopyranose-(1-4)-2-acetamido-2-deoxy-beta-D-glucopyranose

Chain E:  11% 78% 11%

MAG1
MAG2
MAN3
MAN4
MAN5
MAN6
MAN7
MAN8
MAN9

- Molecule 5: beta-D-galactopyranose-(1-4)-2-acetamido-2-deoxy-beta-D-glucopyranose-(1-2)-alpha-D-mannopyranose-(1-6)-beta-D-mannopyranose-(1-4)-2-acetamido-2-deoxy-beta-D-glucopyranose-(1-4)-[alpha-L-fucopyranose-(1-6)]2-acetamido-2-deoxy-beta-D-glucopyranose

Chain F:  14% 86%

MAG1
MAG2
MAN3
MAN4
MAG5
GAL6
FUC7

4 Data and refinement statistics

Property	Value	Source
Space group	H 3	Depositor
Cell constants a, b, c, α , β , γ	259.23Å 259.23Å 71.83Å 90.00° 90.00° 120.00°	Depositor
Resolution (Å)	36.56 – 2.30 36.56 – 2.30	Depositor EDS
% Data completeness (in resolution range)	97.2 (36.56-2.30) 97.4 (36.56-2.30)	Depositor EDS
R_{merge}	0.10	Depositor
R_{sym}	(Not available)	Depositor
$\langle I/\sigma(I) \rangle$ ¹	2.31 (at 2.29Å)	Xtrriage
Refinement program	REFMAC 5.7.0029	Depositor
R, R_{free}	0.169 , 0.210 0.170 , 0.212	Depositor DCC
R_{free} test set	4009 reflections (5.00%)	wwPDB-VP
Wilson B-factor (Å ²)	32.2	Xtrriage
Anisotropy	0.059	Xtrriage
Bulk solvent k_{sol} (e/Å ³), B_{sol} (Å ²)	0.34 , 30.2	EDS
L-test for twinning ²	$\langle L \rangle = 0.49$, $\langle L^2 \rangle = 0.32$	Xtrriage
Estimated twinning fraction	0.014 for h,-h-k,-l	Xtrriage
F_o, F_c correlation	0.96	EDS
Total number of atoms	10862	wwPDB-VP
Average B, all atoms (Å ²)	34.0	wwPDB-VP

Xtrriage's analysis on translational NCS is as follows: *The largest off-origin peak in the Patterson function is 2.96% of the height of the origin peak. No significant pseudotranslation is detected.*

¹Intensities estimated from amplitudes.

²Theoretical values of $\langle |L| \rangle$, $\langle L^2 \rangle$ for acentric reflections are 0.5, 0.333 respectively for untwinned datasets, and 0.375, 0.2 for perfectly twinned datasets.

5 Model quality [i](#)

5.1 Standard geometry [i](#)

Bond lengths and bond angles in the following residue types are not validated in this section: MAN, FUC, BMA, CL, PO4, PO3, GAL, NAG, TLA, GOL

The Z score for a bond length (or angle) is the number of standard deviations the observed value is removed from the expected value. A bond length (or angle) with $|Z| > 5$ is considered an outlier worth inspection. RMSZ is the root-mean-square of all Z scores of the bond lengths (or angles).

Mol	Chain	Bond lengths		Bond angles	
		RMSZ	# Z >5	RMSZ	# Z >5
1	A	0.55	0/5037	0.73	5/6884 (0.1%)
1	B	0.54	0/5037	0.70	2/6884 (0.0%)
All	All	0.55	0/10074	0.72	7/13768 (0.1%)

There are no bond length outliers.

All (7) bond angle outliers are listed below:

Mol	Chain	Res	Type	Atoms	Z	Observed(°)	Ideal(°)
1	A	161	ARG	NE-CZ-NH2	-8.25	116.18	120.30
1	A	363	ARG	NE-CZ-NH2	-6.83	116.89	120.30
1	B	363	ARG	NE-CZ-NH2	-6.04	117.28	120.30
1	A	161	ARG	NE-CZ-NH1	5.88	123.24	120.30
1	A	129	GLY	N-CA-C	-5.23	100.03	113.10
1	A	624	ASP	CB-CG-OD1	5.14	122.93	118.30
1	B	129	GLY	N-CA-C	-5.13	100.28	113.10

There are no chirality outliers.

There are no planarity outliers.

5.2 Too-close contacts [i](#)

In the following table, the Non-H and H(model) columns list the number of non-hydrogen atoms and hydrogen atoms in the chain respectively. The H(added) column lists the number of hydrogen atoms added and optimized by MolProbity. The Clashes column lists the number of clashes within the asymmetric unit, whereas Symm-Clashes lists symmetry-related clashes.

Mol	Chain	Non-H	H(model)	H(added)	Clashes	Symm-Clashes
1	A	4885	0	4779	60	0
1	B	4885	0	4777	61	0

Continued on next page...

Continued from previous page...

Mol	Chain	Non-H	H(model)	H(added)	Clashes	Symm-Clashes
2	C	116	0	97	1	0
3	D	28	0	25	1	0
3	G	28	0	25	0	0
4	E	105	0	88	1	0
5	F	85	0	73	0	0
6	A	14	0	13	0	0
6	B	28	0	26	2	0
7	A	30	0	12	1	0
7	B	10	0	4	0	0
8	A	6	0	8	0	0
8	B	6	0	8	5	0
9	A	5	0	0	0	0
9	B	15	0	0	2	0
10	A	1	0	0	4	0
10	B	1	0	0	2	0
11	B	4	0	0	0	0
12	A	337	0	0	12	0
12	B	273	0	0	5	0
All	All	10862	0	9935	123	0

The all-atom clashscore is defined as the number of clashes found per 1000 atoms (including hydrogen atoms). The all-atom clashscore for this structure is 6.

All (123) close contacts within the same asymmetric unit are listed below, sorted by their clash magnitude.

Atom-1	Atom-2	Interatomic distance (Å)	Clash overlap (Å)
1:B:356:HIS:HB2	9:B:724:PO4:O3	1.60	1.01
1:B:263:ARG:HH11	1:B:275:GLN:HE21	1.11	0.94
1:A:489:ARG:HH11	1:A:489:ARG:HG3	1.35	0.89
1:B:518:LEU:HD12	1:B:519:PRO:HD2	1.60	0.84
1:B:470:VAL:HG23	1:B:516:ARG:O	1.77	0.83
1:A:176:ASN:HD21	1:A:217:ARG:HH11	1.30	0.77
1:B:370:GLN:N	9:B:724:PO4:O1	2.13	0.75
1:A:336:ASN:O	1:A:337:THR:OG1	2.06	0.74
1:A:153:LYS:HE3	12:A:891:HOH:O	1.88	0.72
1:B:543:ARG:HD3	12:B:842:HOH:O	1.88	0.72
12:B:986:HOH:O	4:E:7:MAN:H61	1.90	0.71
1:A:176:ASN:ND2	1:A:217:ARG:HH11	1.87	0.71
1:B:324:LYS:NZ	8:B:722:GOL:H11	2.05	0.70
1:B:564:LEU:HD23	1:B:607:PHE:HB3	1.75	0.69
1:B:70:GLN:HE22	1:B:73:ASN:HD22	1.41	0.68

Continued on next page...

Continued from previous page...

Atom-1	Atom-2	Interatomic distance (Å)	Clash overlap (Å)
1:A:363:ARG:HD3	10:A:719:CL:CL	2.31	0.68
1:A:489:ARG:HH11	1:A:489:ARG:CG	2.09	0.66
1:B:363:ARG:HD3	10:B:727:CL:CL	2.33	0.65
1:B:416:HIS:HA	8:B:722:GOL:H12	1.79	0.65
1:A:363:ARG:CD	10:A:719:CL:CL	2.83	0.64
1:A:553:ARG:HD3	12:A:1066:HOH:O	1.97	0.64
1:A:573:VAL:HG11	1:A:578:LEU:HD11	1.79	0.64
1:A:500:GLN:O	1:A:504:MET:HE3	1.99	0.63
1:A:176:ASN:HD22	1:A:217:ARG:HD2	1.63	0.63
1:B:470:VAL:CG2	1:B:516:ARG:O	2.46	0.63
1:A:565:VAL:HG22	1:A:606:VAL:HG22	1.80	0.62
1:A:559:LEU:HD11	1:A:565:VAL:HG23	1.81	0.62
1:B:324:LYS:HZ1	8:B:722:GOL:H11	1.66	0.61
1:B:416:HIS:CA	8:B:722:GOL:H12	2.32	0.59
1:B:147:GLN:HE21	1:B:147:GLN:HA	1.68	0.58
1:B:91:HIS:HD2	1:B:131:GLU:OE1	1.85	0.58
1:B:261:LEU:C	1:B:261:LEU:HD12	2.24	0.58
1:A:428:GLN:HG2	12:A:1061:HOH:O	2.04	0.58
1:A:553:ARG:CD	12:A:1066:HOH:O	2.52	0.57
1:A:242:HIS:CD2	1:A:289:LYS:HB2	2.40	0.57
1:A:176:ASN:ND2	1:A:217:ARG:HD2	2.21	0.56
1:A:531:ARG:HD3	12:A:973:HOH:O	2.06	0.56
1:B:263:ARG:HH11	1:B:275:GLN:NE2	1.93	0.55
1:B:276:GLU:OE1	1:B:329:HIS:NE2	2.32	0.55
1:B:547:PRO:HB3	1:B:628:ARG:HD2	1.88	0.54
1:B:99:THR:HG22	1:B:109:TYR:CD1	2.41	0.54
1:A:261:LEU:C	1:A:261:LEU:HD12	2.28	0.53
1:A:624:ASP:OD2	1:A:628:ARG:HD3	2.08	0.53
1:B:543:ARG:CD	12:B:842:HOH:O	2.52	0.52
1:B:556:ALA:HB1	1:B:564:LEU:HD12	1.90	0.52
1:A:60:GLN:HG2	12:A:841:HOH:O	2.09	0.52
1:A:477:ASP:OD1	1:A:531:ARG:HG3	2.09	0.52
1:B:395:LEU:HD12	1:B:537:LEU:HD22	1.90	0.52
1:B:263:ARG:HD2	1:B:275:GLN:NE2	2.24	0.52
1:B:103:THR:HG23	1:B:147:GLN:OE1	2.09	0.51
1:B:559:LEU:HD11	1:B:565:VAL:HG23	1.92	0.51
1:A:284:ARG:NH2	1:A:341:PHE:HA	2.26	0.50
1:B:363:ARG:CD	10:B:727:CL:CL	2.97	0.50
1:A:113:HIS:HD2	12:A:1019:HOH:O	1.93	0.50
1:B:86:LYS:HE2	1:B:127:LEU:HD12	1.93	0.50
1:B:70:GLN:NE2	1:B:73:ASN:HD22	2.07	0.50

Continued on next page...

Continued from previous page...

Atom-1	Atom-2	Interatomic distance (Å)	Clash overlap (Å)
1:B:91:HIS:CD2	1:B:131:GLU:OE1	2.65	0.49
1:A:363:ARG:NH2	12:A:950:HOH:O	2.41	0.49
1:B:86:LYS:HE2	1:B:127:LEU:CD1	2.43	0.49
1:A:588:ASP:C	1:A:590:LYS:H	2.16	0.49
1:A:65:VAL:HG13	1:A:117:TYR:CD2	2.48	0.48
1:B:500:GLN:O	1:B:504:MET:HE3	2.13	0.48
1:B:480:LEU:HD13	1:B:511:VAL:HG21	1.96	0.48
1:B:401:LEU:HD21	1:B:424:ALA:HB2	1.96	0.48
1:A:489:ARG:CG	1:A:489:ARG:NH1	2.74	0.48
1:A:604:LEU:C	1:A:604:LEU:HD23	2.34	0.47
1:B:419:GLY:HA3	1:B:441:TYR:CZ	2.49	0.47
1:A:363:ARG:HD2	10:A:719:CL:CL	2.50	0.47
1:B:99:THR:HG22	1:B:109:TYR:CE1	2.49	0.47
1:B:518:LEU:HD12	1:B:519:PRO:CD	2.39	0.47
1:A:399:GLU:OE2	1:A:426:ARG:NH2	2.47	0.47
1:B:127:LEU:CD2	1:B:171:HIS:CE1	2.98	0.47
1:A:317:THR:HA	1:A:533:PRO:HG3	1.97	0.47
1:B:577:CYS:HB3	1:B:625:TYR:CD2	2.49	0.47
1:B:382:LEU:HD21	1:B:504:MET:HB3	1.97	0.47
1:A:428:GLN:CG	12:A:1061:HOH:O	2.62	0.47
1:B:263:ARG:NH1	1:B:275:GLN:HE21	1.93	0.47
1:A:334:LEU:HD21	1:A:343:TYR:HB3	1.97	0.46
1:B:324:LYS:HG3	1:B:441:TYR:CE2	2.50	0.46
1:A:382:LEU:HD23	1:A:505:ARG:HG2	1.96	0.46
1:A:471:TYR:HA	1:A:539:HIS:O	2.16	0.46
1:A:273:LEU:CD1	1:A:333:LEU:HD22	2.45	0.45
1:B:41:TRP:CE2	1:B:335:ALA:HB1	2.51	0.45
1:B:472:VAL:HG21	1:B:625:TYR:CE1	2.51	0.45
1:B:416:HIS:C	8:B:722:GOL:H12	2.37	0.45
3:D:2:NAG:H82	3:D:2:NAG:O3	2.17	0.45
1:A:587:GLN:O	1:A:588:ASP:HB2	2.16	0.45
1:A:73:ASN:HB2	1:A:353:LEU:HD21	1.99	0.45
1:A:403:ALA:O	7:A:714:TLA:O4	2.35	0.45
1:A:82:HIS:CE1	1:A:576:LYS:HG2	2.51	0.45
1:B:266:ALA:O	1:B:267:ARG:HB2	2.16	0.45
1:B:239:ARG:C	1:B:239:ARG:HD3	2.37	0.44
1:A:187:ASP:HB3	12:A:1037:HOH:O	2.17	0.44
1:A:641:VAL:HB	12:A:1098:HOH:O	2.17	0.44
1:A:188:PHE:CE1	1:A:193:MET:HG2	2.53	0.44
1:B:494:VAL:CG2	2:C:2:NAG:O6	2.66	0.44
1:A:153:LYS:CE	12:A:891:HOH:O	2.57	0.44

Continued on next page...

Continued from previous page...

Atom-1	Atom-2	Interatomic distance (Å)	Clash overlap (Å)
1:A:242:HIS:NE2	1:A:289:LYS:HB2	2.32	0.43
1:A:419:GLY:HA3	1:A:441:TYR:CZ	2.53	0.43
1:B:453:SER:HB2	6:B:720:NAG:C8	2.48	0.43
1:B:556:ALA:HB1	1:B:564:LEU:CD1	2.48	0.43
1:B:330:GLN:HG2	1:B:421:LEU:HD11	2.01	0.43
1:A:587:GLN:O	1:A:590:LYS:HB2	2.18	0.43
1:A:434:TRP:CH2	1:A:436:ALA:HB2	2.54	0.42
1:B:470:VAL:HG23	1:B:516:ARG:C	2.39	0.42
1:B:505:ARG:HD2	12:B:837:HOH:O	2.19	0.42
1:A:273:LEU:HD11	1:A:333:LEU:HD22	2.02	0.42
1:A:309:PRO:HG3	1:A:358:HIS:CE1	2.54	0.42
1:B:453:SER:HB2	6:B:720:NAG:H81	2.00	0.42
1:B:458:LEU:O	1:B:525:THR:HA	2.19	0.42
1:A:401:LEU:HD21	1:A:424:ALA:HB2	2.01	0.41
1:A:309:PRO:HG3	1:A:358:HIS:NE2	2.36	0.41
1:A:270:ILE:HG13	1:A:270:ILE:O	2.20	0.41
1:A:61:ALA:O	1:A:65:VAL:HB	2.20	0.41
1:A:302:PRO:HD2	10:A:719:CL:CL	2.57	0.41
1:B:496:PRO:HA	1:B:500:GLN:OE1	2.21	0.41
1:B:41:TRP:CZ2	1:B:335:ALA:HB1	2.55	0.41
1:B:122:ARG:HG2	12:B:991:HOH:O	2.21	0.41
1:A:413:ASP:OD1	1:A:415:ASN:HB3	2.20	0.41
1:B:181:ASN:OD1	1:B:262:HIS:HE1	2.04	0.40
1:B:332:LEU:HD21	1:B:413:ASP:HB2	2.03	0.40
1:A:341:PHE:CD2	1:A:341:PHE:C	2.95	0.40
1:A:314:ALA:HA	1:A:360:PHE:O	2.22	0.40

There are no symmetry-related clashes.

5.3 Torsion angles [\(i\)](#)

5.3.1 Protein backbone [\(i\)](#)

In the following table, the Percentiles column shows the percent Ramachandran outliers of the chain as a percentile score with respect to all X-ray entries followed by that with respect to entries of similar resolution.

The Analysed column shows the number of residues for which the backbone conformation was analysed, and the total number of residues.

Mol	Chain	Analysed	Favoured	Allowed	Outliers	Percentiles	
1	A	614/627 (98%)	586 (95%)	28 (5%)	0	100	100
1	B	614/627 (98%)	584 (95%)	30 (5%)	0	100	100
All	All	1228/1254 (98%)	1170 (95%)	58 (5%)	0	100	100

There are no Ramachandran outliers to report.

5.3.2 Protein sidechains [i](#)

In the following table, the Percentiles column shows the percent sidechain outliers of the chain as a percentile score with respect to all X-ray entries followed by that with respect to entries of similar resolution.

The Analysed column shows the number of residues for which the sidechain conformation was analysed, and the total number of residues.

Mol	Chain	Analysed	Rotameric	Outliers	Percentiles	
1	A	518/527 (98%)	506 (98%)	12 (2%)	45	63
1	B	518/527 (98%)	508 (98%)	10 (2%)	52	69
All	All	1036/1054 (98%)	1014 (98%)	22 (2%)	48	66

All (22) residues with a non-rotameric sidechain are listed below:

Mol	Chain	Res	Type
1	A	41	TRP
1	A	65	VAL
1	A	69	ASP
1	A	108	SER
1	A	130	PHE
1	A	190	ASN
1	A	255	ARG
1	A	337	THR
1	A	341	PHE
1	A	350	ASN
1	A	489	ARG
1	A	555	ARG
1	B	41	TRP
1	B	69	ASP
1	B	147	GLN
1	B	336	ASN
1	B	337	THR
1	B	339	SER

Continued on next page...

Continued from previous page...

Mol	Chain	Res	Type
1	B	350	ASN
1	B	451	ASN
1	B	587	GLN
1	B	623	LEU

Sometimes sidechains can be flipped to improve hydrogen bonding and reduce clashes. All (13) such sidechains are listed below:

Mol	Chain	Res	Type
1	A	73	ASN
1	A	82	HIS
1	A	176	ASN
1	A	190	ASN
1	A	350	ASN
1	A	428	GLN
1	B	70	GLN
1	B	91	HIS
1	B	125	GLN
1	B	186	HIS
1	B	275	GLN
1	B	336	ASN
1	B	350	ASN

5.3.3 RNA [i](#)

There are no RNA molecules in this entry.

5.4 Non-standard residues in protein, DNA, RNA chains [i](#)

There are no non-standard protein/DNA/RNA residues in this entry.

5.5 Carbohydrates [i](#)

30 monosaccharides are modelled in this entry.

In the following table, the Counts columns list the number of bonds (or angles) for which Mogul statistics could be retrieved, the number of bonds (or angles) that are observed in the model and the number of bonds (or angles) that are defined in the Chemical Component Dictionary. The Link column lists molecule types, if any, to which the group is linked. The Z score for a bond length (or angle) is the number of standard deviations the observed value is removed from the

expected value. A bond length (or angle) with $|Z| > 2$ is considered an outlier worth inspection. RMSZ is the root-mean-square of all Z scores of the bond lengths (or angles).

Mol	Type	Chain	Res	Link	Bond lengths			Bond angles		
					Counts	RMSZ	$\# Z > 2$	Counts	RMSZ	$\# Z > 2$
2	NAG	C	1	1,2	14,14,15	0.60	0	17,19,21	1.29	3 (17%)
2	MAN	C	10	2	11,11,12	0.78	0	15,15,17	1.19	2 (13%)
2	NAG	C	2	2	14,14,15	0.82	0	17,19,21	1.63	4 (23%)
2	BMA	C	3	2	11,11,12	0.48	0	15,15,17	0.86	0
2	MAN	C	4	2	11,11,12	0.66	0	15,15,17	1.05	1 (6%)
2	MAN	C	5	2	11,11,12	0.67	0	15,15,17	1.46	3 (20%)
2	MAN	C	6	2	11,11,12	0.68	0	15,15,17	1.45	1 (6%)
2	MAN	C	7	2	11,11,12	0.64	0	15,15,17	1.24	2 (13%)
2	MAN	C	8	2	11,11,12	0.71	0	15,15,17	1.15	1 (6%)
2	MAN	C	9	2	11,11,12	0.57	0	15,15,17	1.49	1 (6%)
3	NAG	D	1	1,3	14,14,15	0.80	0	17,19,21	0.86	0
3	NAG	D	2	3	14,14,15	0.54	0	17,19,21	2.47	4 (23%)
4	NAG	E	1	1,4	14,14,15	0.95	1 (7%)	17,19,21	1.22	2 (11%)
4	NAG	E	2	4	14,14,15	0.94	0	17,19,21	1.24	1 (5%)
4	BMA	E	3	4	11,11,12	0.30	0	15,15,17	1.05	1 (6%)
4	MAN	E	4	4	11,11,12	0.64	0	15,15,17	1.49	1 (6%)
4	MAN	E	5	4	11,11,12	0.54	0	15,15,17	0.99	0
4	MAN	E	6	4	11,11,12	0.78	0	15,15,17	1.15	2 (13%)
4	MAN	E	7	4	11,11,12	0.80	0	15,15,17	1.32	1 (6%)
4	MAN	E	8	4	11,11,12	0.56	0	15,15,17	0.91	1 (6%)
4	MAN	E	9	4	11,11,12	0.65	0	15,15,17	1.43	3 (20%)
5	NAG	F	1	1,5	14,14,15	0.58	0	17,19,21	1.06	1 (5%)
5	NAG	F	2	5	14,14,15	0.58	0	17,19,21	0.82	0
5	BMA	F	3	5	11,11,12	0.57	0	15,15,17	0.85	1 (6%)
5	MAN	F	4	5	11,11,12	0.53	0	15,15,17	1.26	1 (6%)
5	NAG	F	5	5	14,14,15	0.57	0	17,19,21	1.50	5 (29%)
5	GAL	F	6	5	11,11,12	0.63	0	15,15,17	0.98	2 (13%)
5	FUC	F	7	5	10,10,11	0.58	0	14,14,16	1.83	3 (21%)
3	NAG	G	1	1,3	14,14,15	0.55	0	17,19,21	1.18	1 (5%)
3	NAG	G	2	3	14,14,15	0.53	0	17,19,21	1.76	2 (11%)

In the following table, the Chirals column lists the number of chiral outliers, the number of chiral centers analysed, the number of these observed in the model and the number defined in the Chemical Component Dictionary. Similar counts are reported in the Torsion and Rings columns.

'-' means no outliers of that kind were identified.

Mol	Type	Chain	Res	Link	Chirals	Torsions	Rings
2	NAG	C	1	1,2	-	0/6/23/26	0/1/1/1
2	MAN	C	10	2	-	2/2/19/22	0/1/1/1
2	NAG	C	2	2	-	1/6/23/26	0/1/1/1
2	BMA	C	3	2	-	0/2/19/22	0/1/1/1
2	MAN	C	4	2	-	0/2/19/22	0/1/1/1
2	MAN	C	5	2	-	0/2/19/22	0/1/1/1
2	MAN	C	6	2	-	0/2/19/22	0/1/1/1
2	MAN	C	7	2	-	0/2/19/22	0/1/1/1
2	MAN	C	8	2	-	0/2/19/22	0/1/1/1
2	MAN	C	9	2	-	1/2/19/22	0/1/1/1
3	NAG	D	1	1,3	-	0/6/23/26	0/1/1/1
3	NAG	D	2	3	-	5/6/23/26	0/1/1/1
4	NAG	E	1	1,4	-	0/6/23/26	0/1/1/1
4	NAG	E	2	4	-	0/6/23/26	0/1/1/1
4	BMA	E	3	4	-	0/2/19/22	0/1/1/1
4	MAN	E	4	4	-	0/2/19/22	0/1/1/1
4	MAN	E	5	4	-	0/2/19/22	0/1/1/1
4	MAN	E	6	4	-	2/2/19/22	0/1/1/1
4	MAN	E	7	4	-	1/2/19/22	0/1/1/1
4	MAN	E	8	4	-	2/2/19/22	0/1/1/1
4	MAN	E	9	4	-	0/2/19/22	0/1/1/1
5	NAG	F	1	1,5	-	2/6/23/26	0/1/1/1
5	NAG	F	2	5	-	0/6/23/26	0/1/1/1
5	BMA	F	3	5	-	1/2/19/22	0/1/1/1
5	MAN	F	4	5	-	2/2/19/22	0/1/1/1
5	NAG	F	5	5	-	4/6/23/26	0/1/1/1
5	GAL	F	6	5	-	2/2/19/22	0/1/1/1
5	FUC	F	7	5	-	-	0/1/1/1
3	NAG	G	1	1,3	-	0/6/23/26	0/1/1/1
3	NAG	G	2	3	-	0/6/23/26	0/1/1/1

All (1) bond length outliers are listed below:

Mol	Chain	Res	Type	Atoms	Z	Observed(Å)	Ideal(Å)
4	E	1	NAG	O5-C1	-2.56	1.39	1.43

All (50) bond angle outliers are listed below:

Mol	Chain	Res	Type	Atoms	Z	Observed(°)	Ideal(°)
3	D	2	NAG	C2-N2-C7	7.72	133.24	122.90

Continued on next page...

Continued from previous page...

Mol	Chain	Res	Type	Atoms	Z	Observed(°)	Ideal(°)
3	G	2	NAG	C1-O5-C5	6.45	120.83	112.19
4	E	4	MAN	C1-O5-C5	4.82	118.65	112.19
5	F	7	FUC	C1-C2-C3	4.36	115.99	109.64
2	C	6	MAN	C1-O5-C5	4.18	117.79	112.19
3	D	2	NAG	C1-C2-N2	-3.90	104.29	110.43
3	D	2	NAG	C8-C7-N2	3.77	122.38	116.12
2	C	5	MAN	O2-C2-C3	-3.48	102.95	110.15
2	C	2	NAG	C1-O5-C5	3.46	116.83	112.19
5	F	7	FUC	O5-C1-C2	3.42	118.96	110.79
4	E	7	MAN	C3-C4-C5	3.14	115.92	110.23
4	E	9	MAN	C1-C2-C3	-3.13	105.09	109.64
4	E	3	BMA	C1-C2-C3	3.02	114.05	109.64
5	F	4	MAN	C1-O5-C5	2.97	116.17	112.19
5	F	5	NAG	C1-O5-C5	2.95	116.14	112.19
2	C	4	MAN	C1-O5-C5	2.93	116.12	112.19
4	E	6	MAN	C1-C2-C3	2.89	113.85	109.64
2	C	9	MAN	O2-C2-C1	2.87	115.78	109.22
5	F	7	FUC	C1-O5-C5	2.84	119.66	112.97
2	C	2	NAG	C6-C5-C4	-2.69	106.42	113.02
4	E	1	NAG	C3-C4-C5	-2.68	105.37	110.23
4	E	2	NAG	O5-C1-C2	-2.66	107.18	111.29
2	C	2	NAG	O5-C1-C2	-2.65	107.19	111.29
3	G	1	NAG	C1-C2-N2	2.63	114.58	110.43
2	C	1	NAG	O5-C1-C2	-2.59	107.29	111.29
2	C	2	NAG	O3-C3-C4	-2.57	104.32	110.38
2	C	10	MAN	C1-C2-C3	2.55	113.35	109.64
4	E	8	MAN	O5-C5-C6	2.53	112.58	107.66
5	F	5	NAG	O5-C1-C2	-2.52	107.40	111.29
4	E	1	NAG	O6-C6-C5	-2.51	102.78	111.33
2	C	7	MAN	O2-C2-C3	-2.43	105.11	110.15
2	C	7	MAN	C1-O5-C5	2.41	115.41	112.19
2	C	1	NAG	O5-C5-C6	2.36	112.26	107.66
3	D	2	NAG	O7-C7-N2	-2.35	117.82	121.98
5	F	6	GAL	C1-C2-C3	2.34	113.05	109.64
5	F	3	BMA	C1-O5-C5	2.32	115.29	112.19
5	F	1	NAG	C4-C3-C2	2.30	114.39	111.02
2	C	5	MAN	C2-C3-C4	-2.28	106.85	110.86
2	C	8	MAN	O5-C5-C6	2.24	112.03	107.66
5	F	5	NAG	C8-C7-N2	2.22	119.81	116.12
2	C	5	MAN	O3-C3-C2	-2.21	105.55	110.05
2	C	10	MAN	C2-C3-C4	2.17	114.67	110.86
5	F	6	GAL	O4-C4-C5	2.15	114.61	109.32

Continued on next page...

Continued from previous page...

Mol	Chain	Res	Type	Atoms	Z	Observed(°)	Ideal(°)
5	F	5	NAG	O7-C7-C8	-2.14	118.24	122.05
5	F	5	NAG	C2-N2-C7	2.13	125.75	122.90
2	C	1	NAG	O4-C4-C5	-2.12	104.11	109.32
3	G	2	NAG	C6-C5-C4	-2.08	107.92	113.02
4	E	9	MAN	O2-C2-C3	2.03	114.36	110.15
4	E	6	MAN	O5-C5-C6	2.02	111.60	107.66
4	E	9	MAN	C3-C4-C5	2.01	113.88	110.23

There are no chirality outliers.

All (25) torsion outliers are listed below:

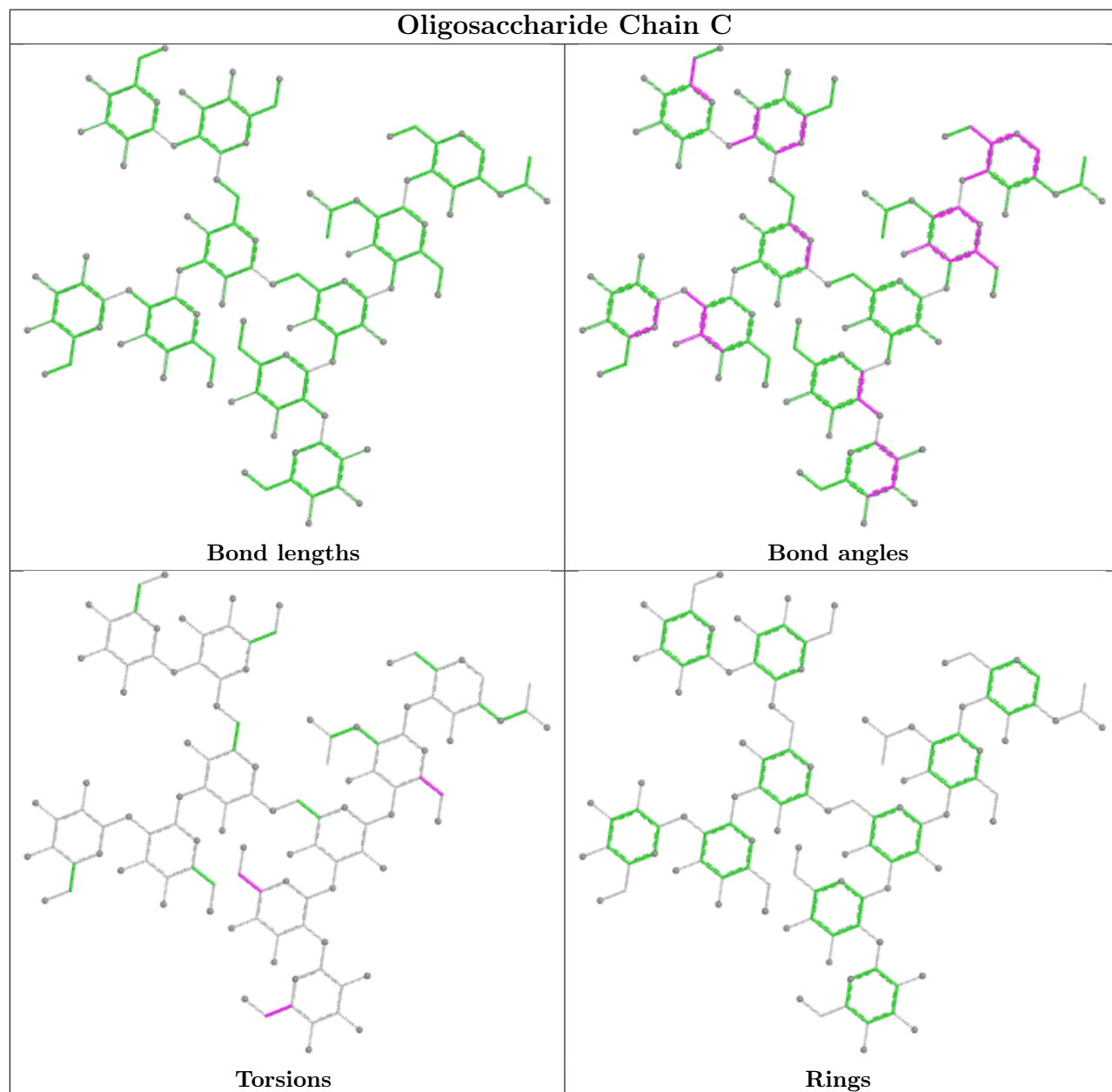
Mol	Chain	Res	Type	Atoms
5	F	5	NAG	O5-C5-C6-O6
5	F	6	GAL	C4-C5-C6-O6
2	C	10	MAN	O5-C5-C6-O6
4	E	6	MAN	O5-C5-C6-O6
5	F	1	NAG	O5-C5-C6-O6
4	E	8	MAN	C4-C5-C6-O6
5	F	6	GAL	O5-C5-C6-O6
5	F	1	NAG	C4-C5-C6-O6
4	E	8	MAN	O5-C5-C6-O6
5	F	5	NAG	C4-C5-C6-O6
3	D	2	NAG	C8-C7-N2-C2
3	D	2	NAG	O7-C7-N2-C2
5	F	5	NAG	C8-C7-N2-C2
5	F	5	NAG	O7-C7-N2-C2
2	C	10	MAN	C4-C5-C6-O6
4	E	6	MAN	C4-C5-C6-O6
4	E	7	MAN	O5-C5-C6-O6
3	D	2	NAG	C4-C5-C6-O6
5	F	4	MAN	C4-C5-C6-O6
3	D	2	NAG	C3-C2-N2-C7
3	D	2	NAG	O5-C5-C6-O6
2	C	2	NAG	C4-C5-C6-O6
2	C	9	MAN	C4-C5-C6-O6
5	F	3	BMA	C4-C5-C6-O6
5	F	4	MAN	O5-C5-C6-O6

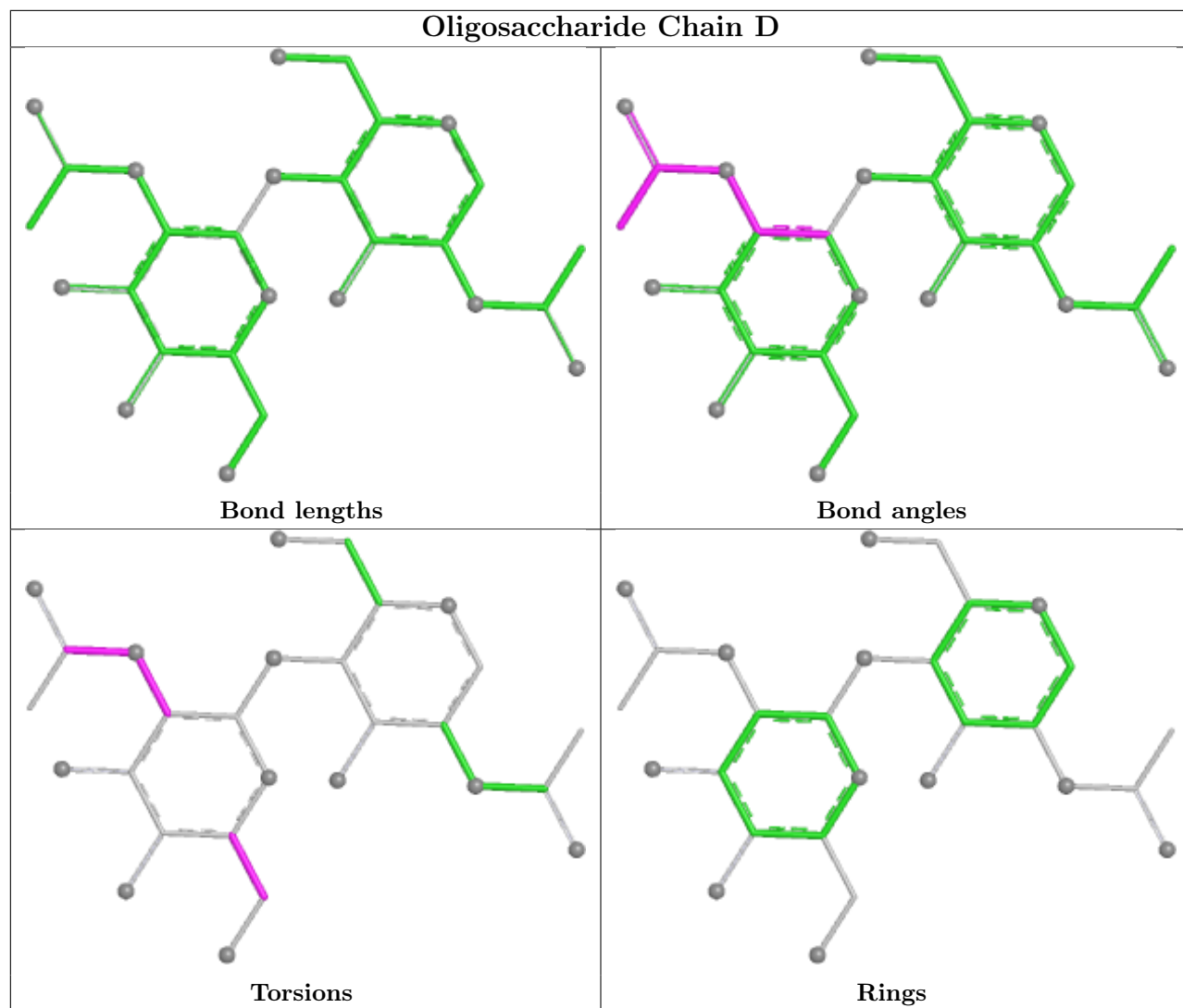
There are no ring outliers.

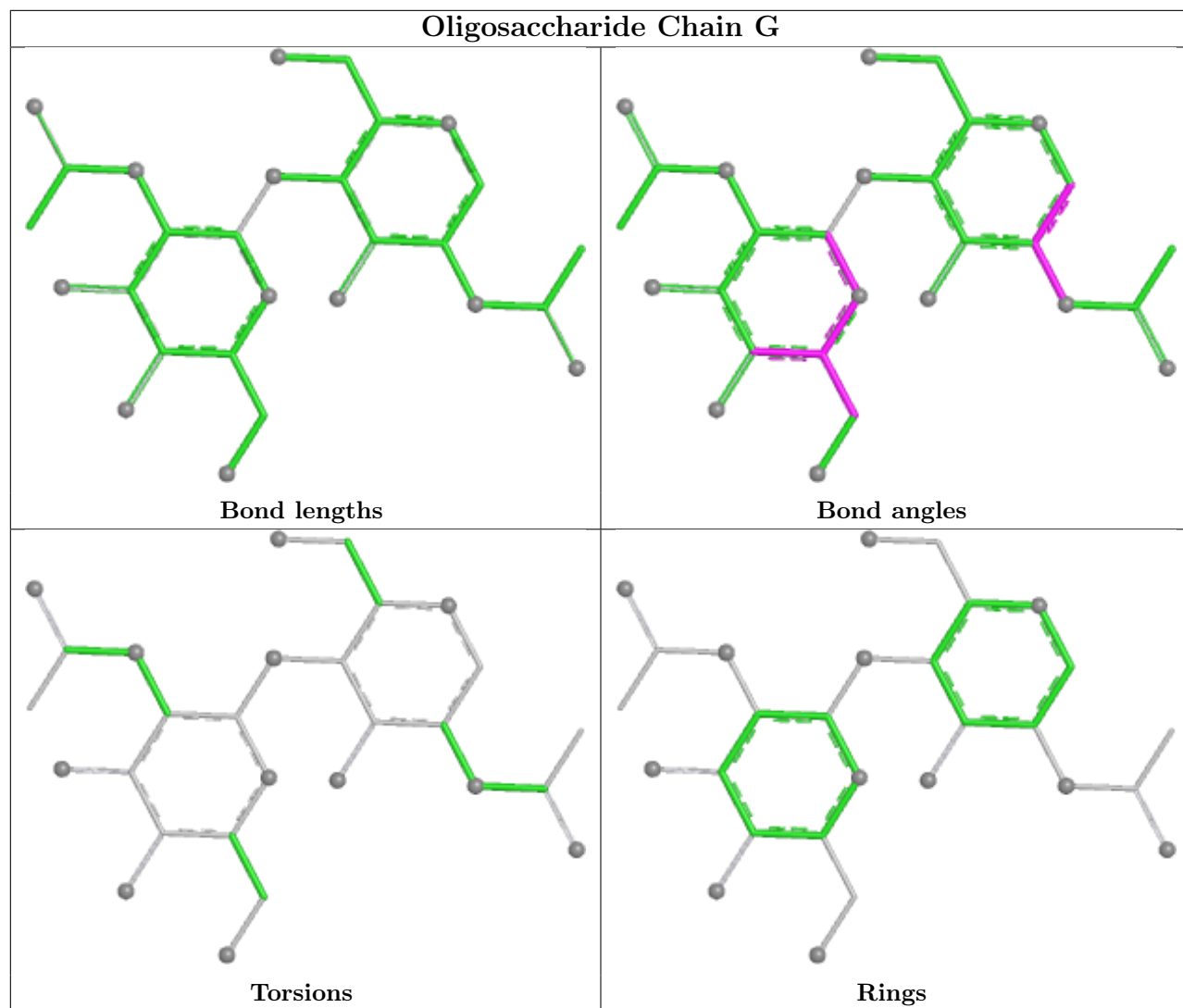
3 monomers are involved in 3 short contacts:

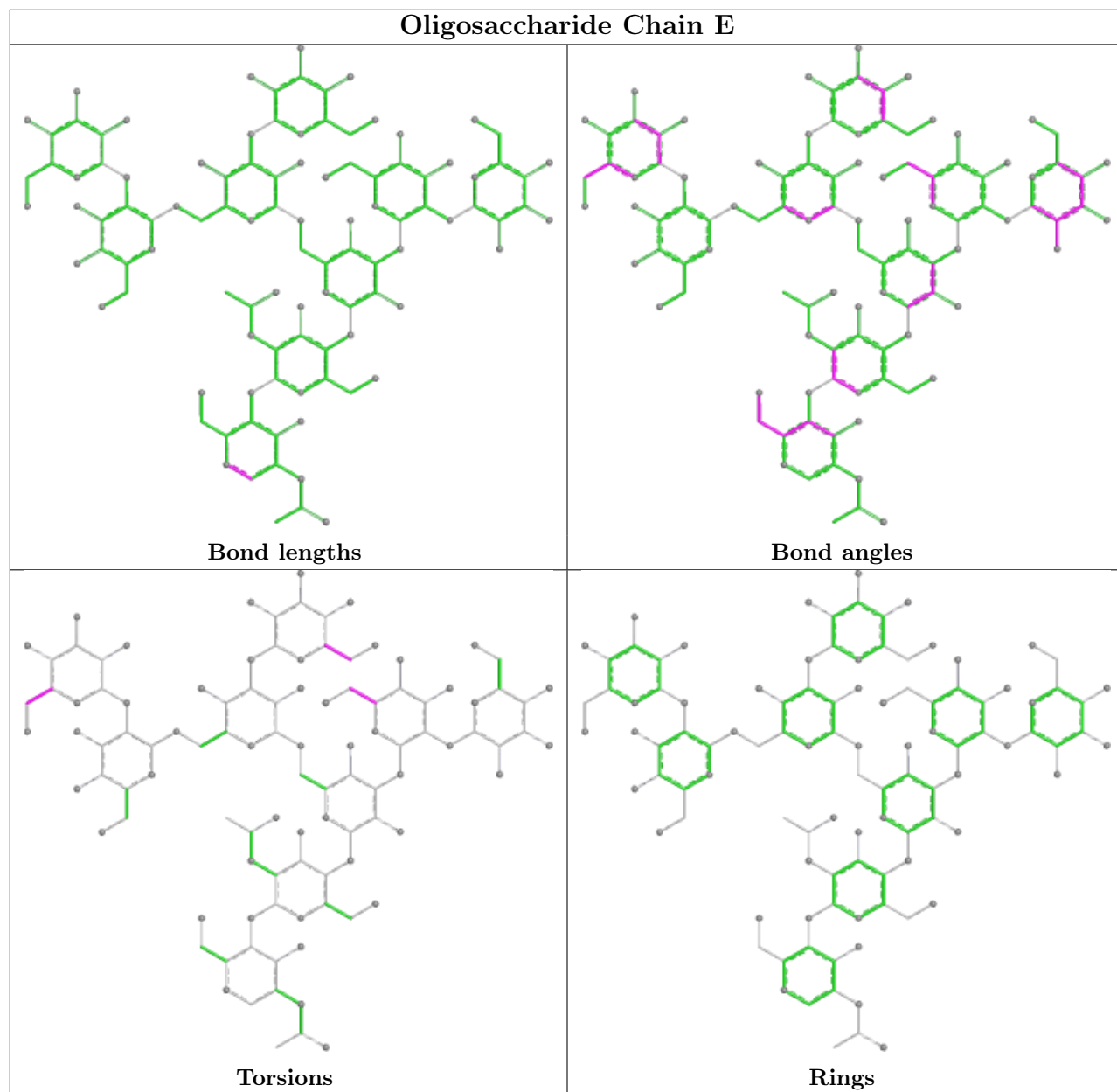
Mol	Chain	Res	Type	Clashes	Symm-Clashes
3	D	2	NAG	1	0
4	E	7	MAN	1	0
2	C	2	NAG	1	0

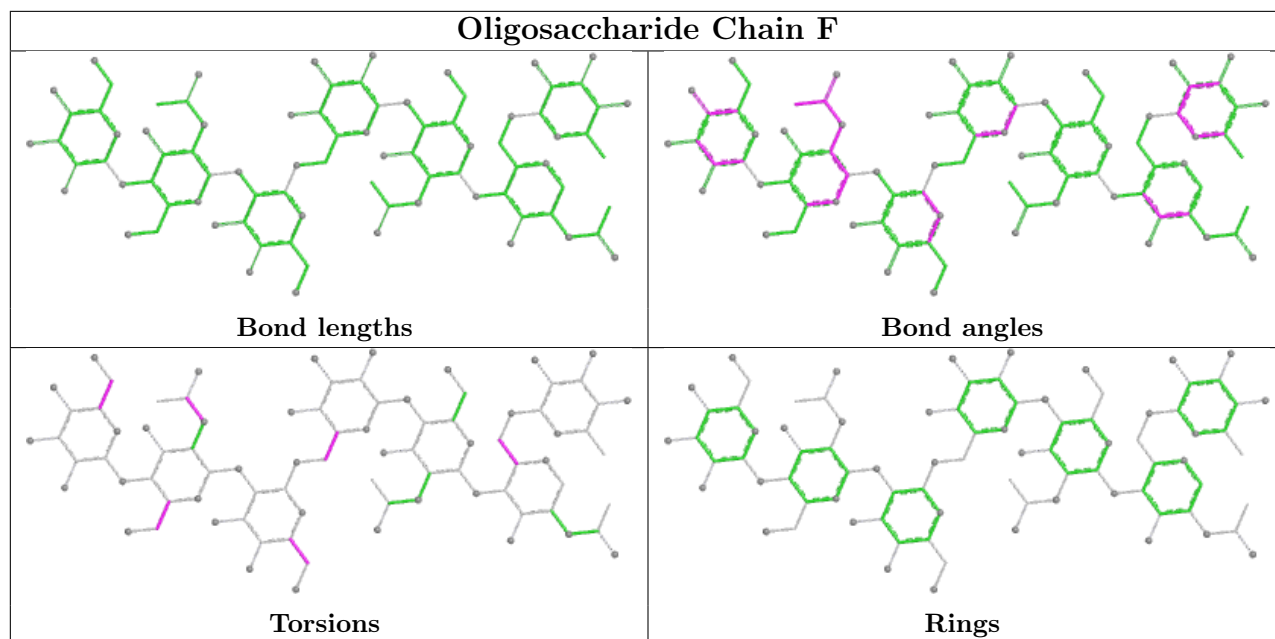
The following is a two-dimensional graphical depiction of Mogul quality analysis of bond lengths, bond angles, torsion angles, and ring geometry for oligosaccharide.











5.6 Ligand geometry [i](#)

Of 16 ligands modelled in this entry, 2 are monoatomic - leaving 14 for Mogul analysis.

In the following table, the Counts columns list the number of bonds (or angles) for which Mogul statistics could be retrieved, the number of bonds (or angles) that are observed in the model and the number of bonds (or angles) that are defined in the Chemical Component Dictionary. The Link column lists molecule types, if any, to which the group is linked. The Z score for a bond length (or angle) is the number of standard deviations the observed value is removed from the expected value. A bond length (or angle) with $|Z| > 2$ is considered an outlier worth inspection. RMSZ is the root-mean-square of all Z scores of the bond lengths (or angles).

Mol	Type	Chain	Res	Link	Bond lengths			Bond angles		
					Counts	RMSZ	$\# Z > 2$	Counts	RMSZ	$\# Z > 2$
8	GOL	B	722	-	5,5,5	0.40	0	5,5,5	0.41	0
9	PO4	B	725	-	4,4,4	0.93	0	6,6,6	0.44	0
9	PO4	B	726	-	4,4,4	0.80	0	6,6,6	0.54	0
8	GOL	A	717	-	5,5,5	0.68	0	5,5,5	1.07	0
6	NAG	A	711	1	14,14,15	0.42	0	17,19,21	1.34	3 (17%)
7	TLA	A	714	-	9,9,9	1.36	1 (11%)	12,12,12	1.21	1 (8%)
7	TLA	A	716	-	9,9,9	1.47	0	12,12,12	0.99	1 (8%)
7	TLA	B	721	-	9,9,9	1.21	0	12,12,12	1.19	2 (16%)
9	PO4	B	724	-	4,4,4	0.88	0	6,6,6	0.69	0
6	NAG	B	710	1	14,14,15	0.64	0	17,19,21	1.59	4 (23%)
6	NAG	B	720	1	14,14,15	0.50	0	17,19,21	1.29	3 (17%)
9	PO4	A	718	-	4,4,4	0.93	0	6,6,6	0.35	0
7	TLA	A	715	-	9,9,9	1.07	0	12,12,12	1.22	1 (8%)

Mol	Type	Chain	Res	Link	Bond lengths			Bond angles		
					Counts	RMSZ	# Z > 2	Counts	RMSZ	# Z > 2
11	PO3	B	723	-	0,3,3	-	-	0,3,3	-	-

In the following table, the Chirals column lists the number of chiral outliers, the number of chiral centers analysed, the number of these observed in the model and the number defined in the Chemical Component Dictionary. Similar counts are reported in the Torsion and Rings columns. '-' means no outliers of that kind were identified.

Mol	Type	Chain	Res	Link	Chirals	Torsions	Rings
8	GOL	B	722	-	-	2/4/4/4	-
8	GOL	A	717	-	-	0/4/4/4	-
6	NAG	A	711	1	-	0/6/23/26	0/1/1/1
7	TLA	A	714	-	-	10/12/12/12	-
7	TLA	A	716	-	-	0/12/12/12	-
7	TLA	B	721	-	-	0/12/12/12	-
6	NAG	B	710	1	-	1/6/23/26	0/1/1/1
6	NAG	B	720	1	-	0/6/23/26	0/1/1/1
7	TLA	A	715	-	-	0/12/12/12	-

All (1) bond length outliers are listed below:

Mol	Chain	Res	Type	Atoms	Z	Observed(Å)	Ideal(Å)
7	A	714	TLA	C2-C1	-2.36	1.49	1.52

All (15) bond angle outliers are listed below:

Mol	Chain	Res	Type	Atoms	Z	Observed(°)	Ideal(°)
6	B	710	NAG	C4-C3-C2	3.85	116.66	111.02
6	B	710	NAG	C1-O5-C5	3.37	116.70	112.19
6	B	720	NAG	C1-O5-C5	2.76	115.88	112.19
6	B	720	NAG	C1-C2-N2	2.69	114.67	110.43
7	B	721	TLA	O11-C1-C2	2.41	120.00	113.31
7	A	715	TLA	O41-C4-C3	2.39	119.95	113.31
6	A	711	NAG	C1-O5-C5	2.38	115.37	112.19
6	B	720	NAG	O5-C1-C2	-2.35	107.65	111.29
6	A	711	NAG	O7-C7-C8	-2.26	118.03	122.05
6	B	710	NAG	O5-C5-C6	2.25	112.03	107.66
7	B	721	TLA	O1-C1-C2	-2.11	115.99	121.62
6	A	711	NAG	O5-C1-C2	-2.09	108.06	111.29
7	A	714	TLA	O3-C3-C4	2.07	115.12	110.69
6	B	710	NAG	C1-C2-N2	-2.03	107.23	110.43
7	A	716	TLA	O3-C3-C2	2.03	114.29	110.17

There are no chirality outliers.

All (13) torsion outliers are listed below:

Mol	Chain	Res	Type	Atoms
7	A	714	TLA	C1-C2-C3-O3
7	A	714	TLA	O2-C2-C3-O3
7	A	714	TLA	O2-C2-C3-C4
8	B	722	GOL	C1-C2-C3-O3
7	A	714	TLA	C1-C2-C3-C4
7	A	714	TLA	O1-C1-C2-O2
7	A	714	TLA	O11-C1-C2-O2
7	A	714	TLA	C2-C3-C4-O41
7	A	714	TLA	C2-C3-C4-O4
7	A	714	TLA	O3-C3-C4-O4
8	B	722	GOL	O2-C2-C3-O3
7	A	714	TLA	O3-C3-C4-O41
6	B	710	NAG	C4-C5-C6-O6

There are no ring outliers.

4 monomers are involved in 10 short contacts:

Mol	Chain	Res	Type	Clashes	Symm-Clashes
8	B	722	GOL	5	0
7	A	714	TLA	1	0
9	B	724	PO4	2	0
6	B	720	NAG	2	0

5.7 Other polymers [i](#)

There are no such residues in this entry.

5.8 Polymer linkage issues [i](#)

There are no chain breaks in this entry.

6 Fit of model and data [i](#)

6.1 Protein, DNA and RNA chains [i](#)

In the following table, the column labelled ‘#RSRZ > 2’ contains the number (and percentage) of RSRZ outliers, followed by percent RSRZ outliers for the chain as percentile scores relative to all X-ray entries and entries of similar resolution. The OWAB column contains the minimum, median, 95th percentile and maximum values of the occupancy-weighted average B-factor per residue. The column labelled ‘Q < 0.9’ lists the number of (and percentage) of residues with an average occupancy less than 0.9.

Mol	Chain	Analysed	<RSRZ>	#RSRZ>2	OWAB(Å ²)	Q<0.9
1	A	616/627 (98%)	-0.69	7 (1%) 77 78	17, 28, 51, 91	0
1	B	616/627 (98%)	-0.46	8 (1%) 74 75	19, 31, 63, 90	0
All	All	1232/1254 (98%)	-0.58	15 (1%) 76 76	17, 29, 58, 91	0

All (15) RSRZ outliers are listed below:

Mol	Chain	Res	Type	RSRZ
1	A	337	THR	4.5
1	A	338	THR	3.8
1	A	340	ALA	3.7
1	B	431	ALA	3.0
1	B	642	PRO	3.0
1	A	339	SER	2.9
1	A	341	PHE	2.8
1	B	591	ALA	2.6
1	A	336	ASN	2.6
1	B	336	ASN	2.6
1	A	589	GLY	2.5
1	B	574	GLY	2.4
1	B	104	GLY	2.2
1	B	105	ARG	2.2
1	B	338	THR	2.1

6.2 Non-standard residues in protein, DNA, RNA chains [i](#)

There are no non-standard protein/DNA/RNA residues in this entry.

6.3 Carbohydrates [i](#)

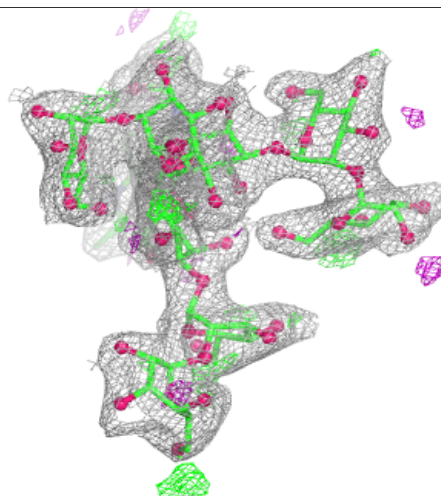
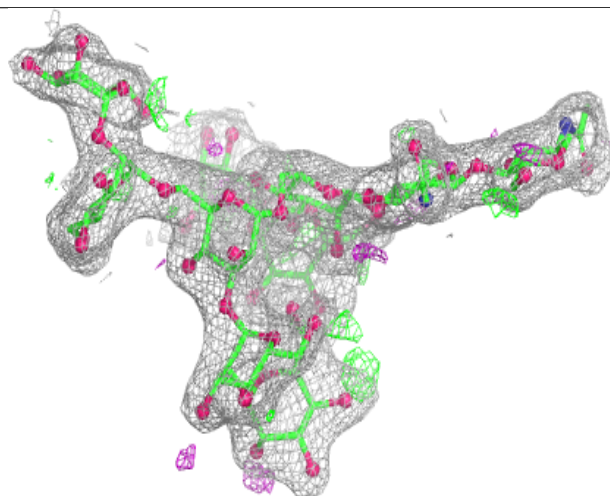
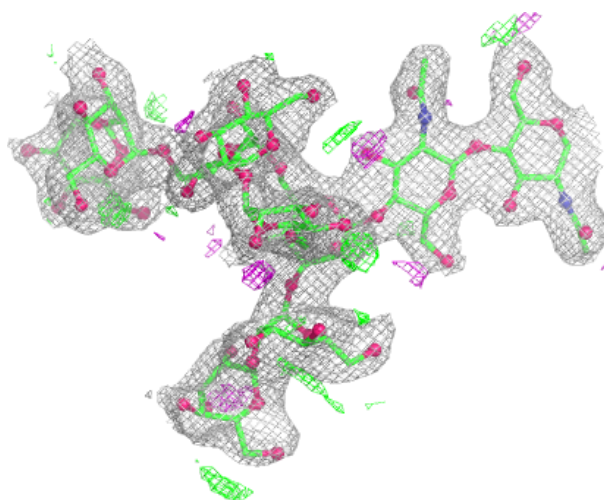
In the following table, the Atoms column lists the number of modelled atoms in the group and the number defined in the chemical component dictionary. The B-factors column lists the minimum, median, 95th percentile and maximum values of B factors of atoms in the group. The column labelled 'Q< 0.9' lists the number of atoms with occupancy less than 0.9.

Mol	Type	Chain	Res	Atoms	RSCC	RSR	B-factors(Å ²)	Q<0.9
5	BMA	F	3	11/12	0.42	0.18	108,115,119,119	0
5	MAN	F	4	11/12	0.47	0.17	99,111,119,120	0
5	GAL	F	6	11/12	0.54	0.20	102,114,122,122	0
2	MAN	C	10	11/12	0.67	0.16	71,75,79,79	0
5	NAG	F	5	14/15	0.69	0.19	90,114,120,121	0
3	NAG	G	2	14/15	0.69	0.17	77,89,95,96	0
5	NAG	F	2	14/15	0.72	0.16	71,98,105,112	0
5	FUC	F	7	10/11	0.72	0.17	100,108,116,117	0
4	MAN	E	6	11/12	0.74	0.21	77,86,90,91	0
3	NAG	D	2	14/15	0.75	0.15	81,86,89,92	0
4	MAN	E	9	11/12	0.81	0.13	50,63,66,73	0
4	MAN	E	5	11/12	0.82	0.14	63,68,77,88	0
2	MAN	C	9	11/12	0.84	0.13	55,61,62,68	0
5	NAG	F	1	14/15	0.84	0.12	53,71,88,102	0
2	MAN	C	7	11/12	0.89	0.10	44,49,54,56	0
3	NAG	D	1	14/15	0.89	0.11	45,55,66,76	0
2	MAN	C	6	11/12	0.89	0.11	41,47,49,49	0
4	MAN	E	7	11/12	0.89	0.10	45,53,59,63	0
2	MAN	C	5	11/12	0.92	0.08	43,45,48,50	0
2	MAN	C	8	11/12	0.93	0.10	46,49,51,52	0
4	MAN	E	8	11/12	0.93	0.08	57,62,67,71	0
2	NAG	C	2	14/15	0.94	0.08	25,31,35,41	0
4	NAG	E	1	14/15	0.95	0.07	29,33,39,44	0
2	MAN	C	4	11/12	0.96	0.06	36,41,44,44	0
3	NAG	G	1	14/15	0.96	0.07	39,45,54,64	0
4	MAN	E	4	11/12	0.96	0.06	38,44,51,64	0
4	NAG	E	2	14/15	0.97	0.06	29,32,36,39	0
4	BMA	E	3	11/12	0.97	0.05	37,40,43,49	0
2	BMA	C	3	11/12	0.97	0.05	31,33,37,46	0
2	NAG	C	1	14/15	0.98	0.05	26,27,30,31	0

The following is a graphical depiction of the model fit to experimental electron density for oligosaccharide. Each fit is shown from different orientation to approximate a three-dimensional view.

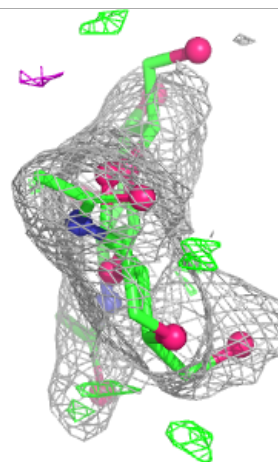
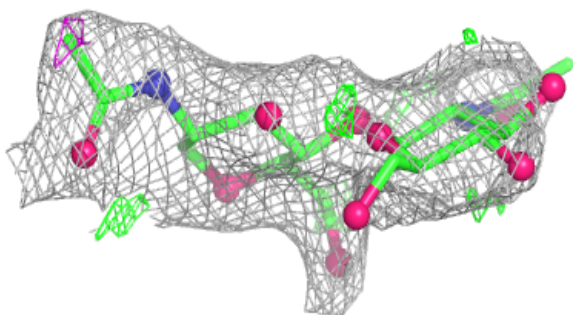
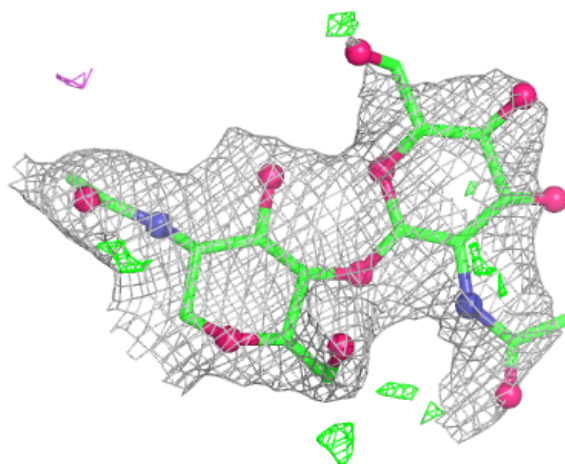
Electron density around Chain C:

$2mF_o-DF_c$ (at 0.7 rmsd) in gray
 mF_o-DF_c (at 3 rmsd) in purple (negative)
and green (positive)



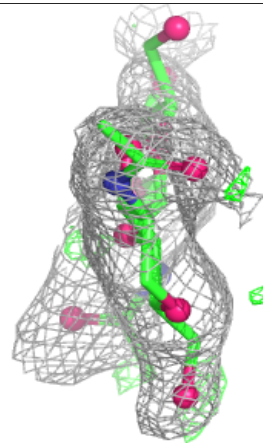
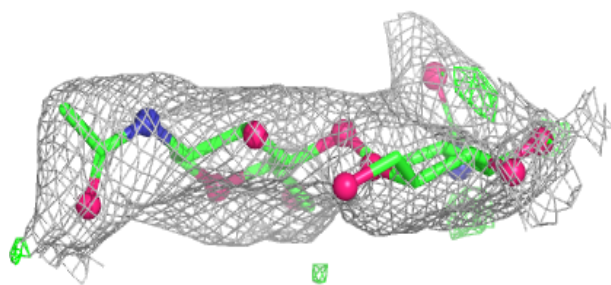
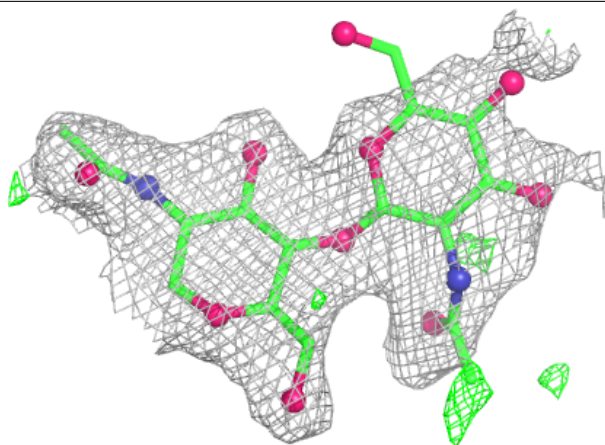
Electron density around Chain D:

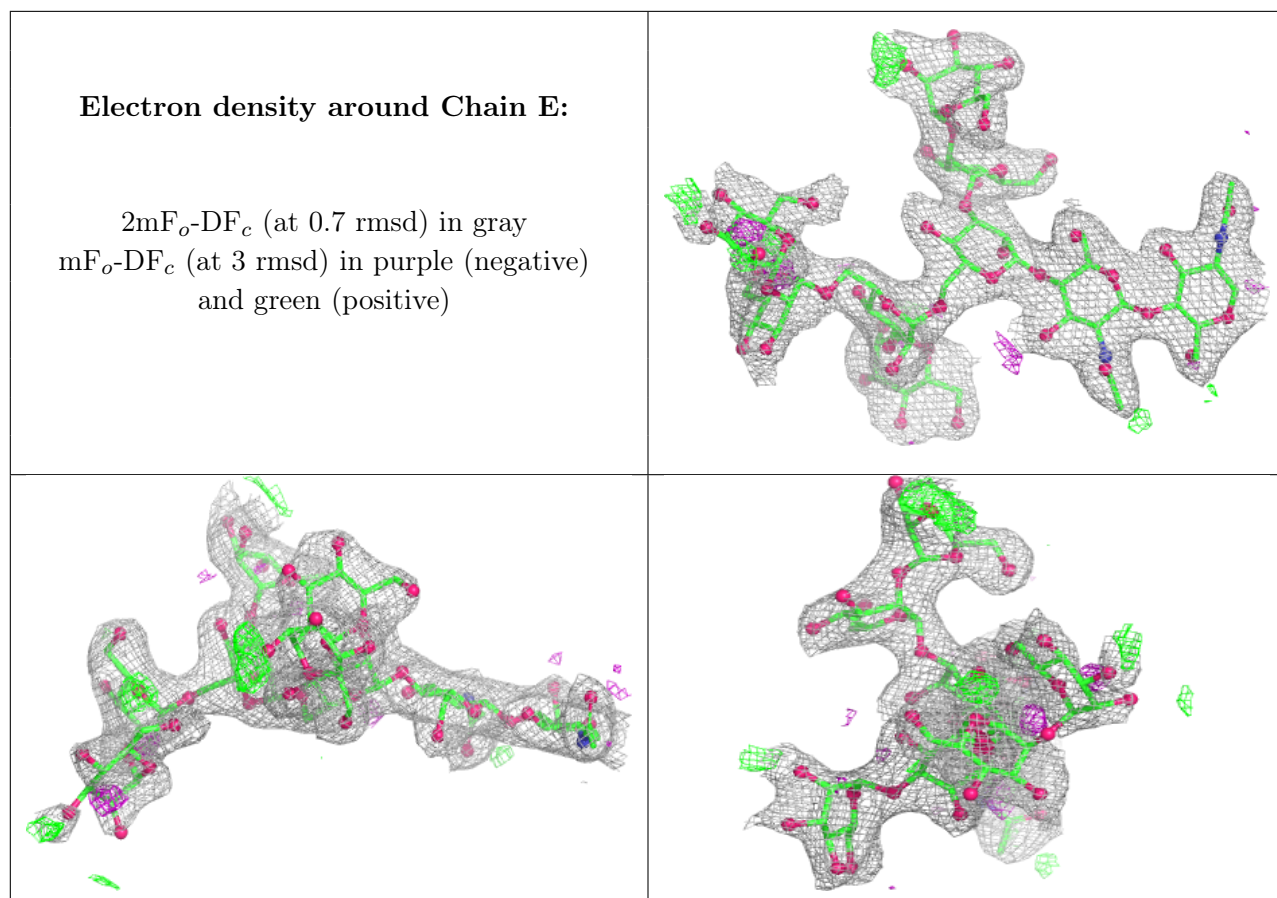
$2mF_o-DF_c$ (at 0.7 rmsd) in gray
 mF_o-DF_c (at 3 rmsd) in purple (negative)
and green (positive)

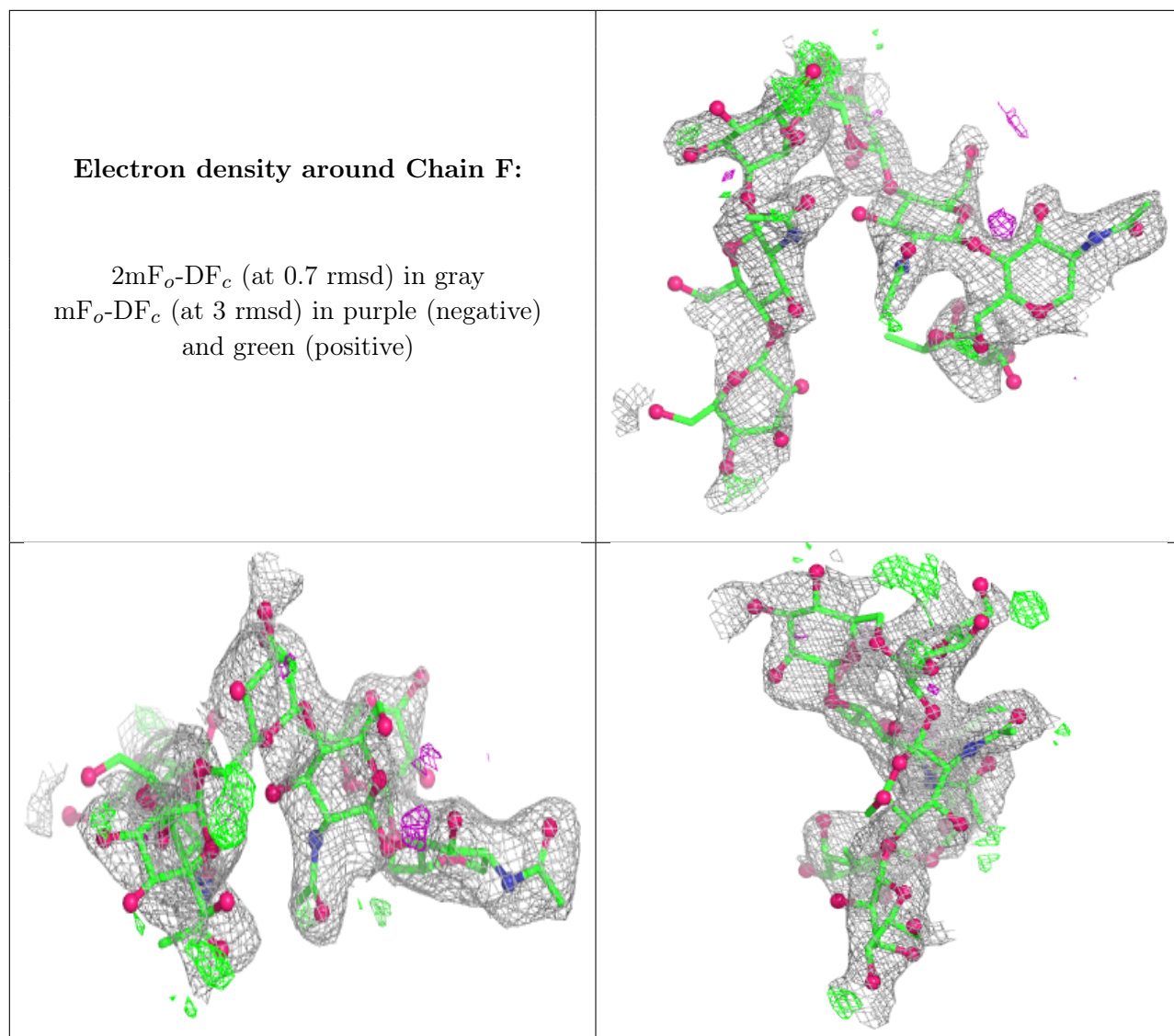


Electron density around Chain G:

$2mF_o-DF_c$ (at 0.7 rmsd) in gray
 mF_o-DF_c (at 3 rmsd) in purple (negative)
and green (positive)







6.4 Ligands [i](#)

In the following table, the Atoms column lists the number of modelled atoms in the group and the number defined in the chemical component dictionary. The B-factors column lists the minimum, median, 95th percentile and maximum values of B factors of atoms in the group. The column labelled 'Q< 0.9' lists the number of atoms with occupancy less than 0.9.

Mol	Type	Chain	Res	Atoms	RSCC	RSR	B-factors(\AA^2)	Q<0.9
9	PO4	A	718	5/5	0.67	0.15	93,95,103,105	0
9	PO4	B	726	5/5	0.72	0.14	85,88,95,96	0
6	NAG	B	720	14/15	0.74	0.14	85,90,100,100	0
9	PO4	B	725	5/5	0.77	0.14	106,108,109,113	0
6	NAG	B	710	14/15	0.78	0.15	55,68,76,78	0
9	PO4	B	724	5/5	0.81	0.23	99,105,111,114	0
7	TLA	A	714	10/10	0.84	0.15	41,53,64,64	0

Continued on next page...

Continued from previous page...

Mol	Type	Chain	Res	Atoms	RSCC	RSR	B-factors(\AA^2)	Q<0.9
8	GOL	B	722	6/6	0.87	0.15	41,46,53,62	0
7	TLA	A	716	10/10	0.89	0.10	37,48,53,56	0
8	GOL	A	717	6/6	0.91	0.10	30,34,36,41	0
6	NAG	A	711	14/15	0.91	0.09	39,46,54,54	0
7	TLA	A	715	10/10	0.93	0.07	32,42,47,50	0
7	TLA	B	721	10/10	0.94	0.07	37,42,44,44	0
11	PO3	B	723	4/4	0.96	0.07	46,56,61,64	0
10	CL	A	719	1/1	0.99	0.04	24,24,24,24	0
10	CL	B	727	1/1	1.00	0.03	24,24,24,24	0

6.5 Other polymers [i](#)

There are no such residues in this entry.