



Full wwPDB X-ray Structure Validation Report ⓘ

Oct 5, 2024 – 11:48 AM EDT

PDB ID : 3W3K
Title : Crystal structure of human TLR8 in complex with CL075
Authors : Tanji, H.; Ohto, U.; Shimizu, T.
Deposited on : 2012-12-22
Resolution : 2.30 Å(reported)

This is a Full wwPDB X-ray Structure Validation Report for a publicly released PDB entry.

We welcome your comments at validation@mail.wwpdb.org

A user guide is available at

<https://www.wwpdb.org/validation/2017/XrayValidationReportHelp>

with specific help available everywhere you see the ⓘ symbol.

The types of validation reports are described at

<http://www.wwpdb.org/validation/2017/FAQs#types>.

The following versions of software and data (see [references ⓘ](#)) were used in the production of this report:

MolProbity : 4.02b-467
Mogul : 2022.3.0, CSD as543be (2022)
Xtriage (Phenix) : 1.20.1
EDS : 3.0
Percentile statistics : 20231227.v01 (using entries in the PDB archive December 27th 2023)
CCP4 : 9.0.003 (Gargrove)
Density-Fitness : 1.0.11
Ideal geometry (proteins) : Engh & Huber (2001)
Ideal geometry (DNA, RNA) : Parkinson et al. (1996)
Validation Pipeline (wwPDB-VP) : 2.39

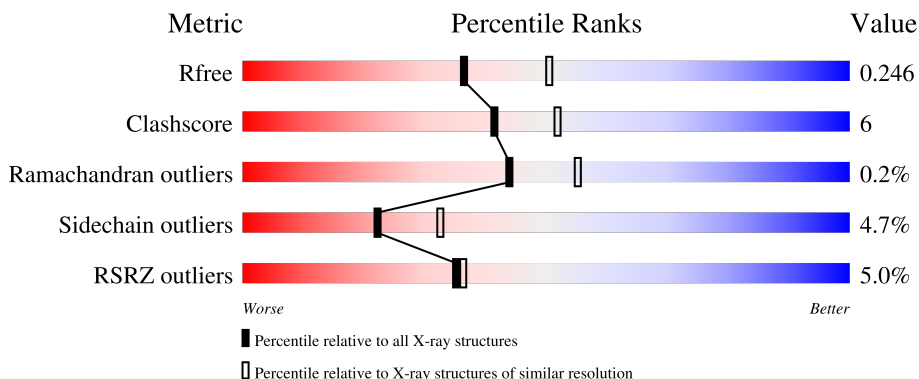
1 Overall quality at a glance

The following experimental techniques were used to determine the structure:

X-RAY DIFFRACTION

The reported resolution of this entry is 2.30 Å.

Percentile scores (ranging between 0-100) for global validation metrics of the entry are shown in the following graphic. The table shows the number of entries on which the scores are based.



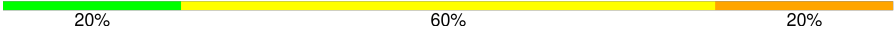


Metric	Whole archive (#Entries)	Similar resolution (#Entries, resolution range(Å))
R_{free}	164625	5963 (2.30-2.30)
Clashscore	180529	6698 (2.30-2.30)
Ramachandran outliers	177936	6640 (2.30-2.30)
Sidechain outliers	177891	6640 (2.30-2.30)
RSRZ outliers	164620	5963 (2.30-2.30)

The table below summarises the geometric issues observed across the polymeric chains and their fit to the electron density. The red, orange, yellow and green segments of the lower bar indicate the fraction of residues that contain outliers for ≥ 3 , 2, 1 and 0 types of geometric quality criteria respectively. A grey segment represents the fraction of residues that are not modelled. The numeric value for each fraction is indicated below the corresponding segment, with a dot representing fractions $\leq 5\%$. The upper red bar (where present) indicates the fraction of residues that have poor fit to the electron density. The numeric value is given above the bar.

Mol	Chain	Length	Quality of chain
1	A	811	 3% 75% 16% 8%
1	B	811	 6% 74% 16% 8%
2	C	5	 60% 20% 20%
2	E	5	 80% 20%
2	F	5	 20% 40% 40%

Continued on next page...

Continued from previous page...

Mol	Chain	Length	Quality of chain
2	H	5	 20% 60% 20%
3	D	3	 33% 67%
4	G	2	 50% 50%

2 Entry composition i

There are 7 unique types of molecules in this entry. The entry contains 12772 atoms, of which 0 are hydrogens and 0 are deuteriums.

In the tables below, the ZeroOcc column contains the number of atoms modelled with zero occupancy, the AltConf column contains the number of residues with at least one atom in alternate conformation and the Trace column contains the number of residues modelled with at most 2 atoms.

- Molecule 1 is a protein called Toll-like receptor 8.

Mol	Chain	Residues	Atoms					ZeroOcc	AltConf	Trace
			Total	C	N	O	S			
1	A	746	Total	C	N	O	S	0	0	0
			5986	3834	1017	1116	19			
1	B	747	Total	C	N	O	S	0	0	0
			5997	3841	1018	1119	19			

There are 20 discrepancies between the modelled and reference sequences:

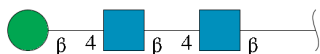
Chain	Residue	Modelled	Actual	Comment	Reference
A	23	ARG	-	expression tag	UNP Q9NR97
A	24	SER	-	expression tag	UNP Q9NR97
A	25	PRO	-	expression tag	UNP Q9NR97
A	26	TRP	-	expression tag	UNP Q9NR97
A	828	GLU	-	expression tag	UNP Q9NR97
A	829	PHE	-	expression tag	UNP Q9NR97
A	830	LEU	-	expression tag	UNP Q9NR97
A	831	VAL	-	expression tag	UNP Q9NR97
A	832	PRO	-	expression tag	UNP Q9NR97
A	833	ARG	-	expression tag	UNP Q9NR97
B	23	ARG	-	expression tag	UNP Q9NR97
B	24	SER	-	expression tag	UNP Q9NR97
B	25	PRO	-	expression tag	UNP Q9NR97
B	26	TRP	-	expression tag	UNP Q9NR97
B	828	GLU	-	expression tag	UNP Q9NR97
B	829	PHE	-	expression tag	UNP Q9NR97
B	830	LEU	-	expression tag	UNP Q9NR97
B	831	VAL	-	expression tag	UNP Q9NR97
B	832	PRO	-	expression tag	UNP Q9NR97
B	833	ARG	-	expression tag	UNP Q9NR97

- Molecule 2 is an oligosaccharide called alpha-D-mannopyranose-(1-3)-[alpha-D-mannopyranose-(1-6)]beta-D-mannopyranose-(1-4)-2-acetamido-2-deoxy-beta-D-glucopyranose-(1-4)-2-acetamido-2-deoxy-beta-D-glucopyranose.



Mol	Chain	Residues	Atoms				ZeroOcc	AltConf	Trace
2	C	5	Total	C	N	O	0	0	0
			61	34	2	25			
2	E	5	Total	C	N	O	0	0	0
			61	34	2	25			
2	F	5	Total	C	N	O	0	0	0
			61	34	2	25			
2	H	5	Total	C	N	O	0	0	0
			61	34	2	25			

- Molecule 3 is an oligosaccharide called beta-D-mannopyranose-(1-4)-2-acetamido-2-deoxy-beta-D-glucopyranose-(1-4)-2-acetamido-2-deoxy-beta-D-glucopyranose.



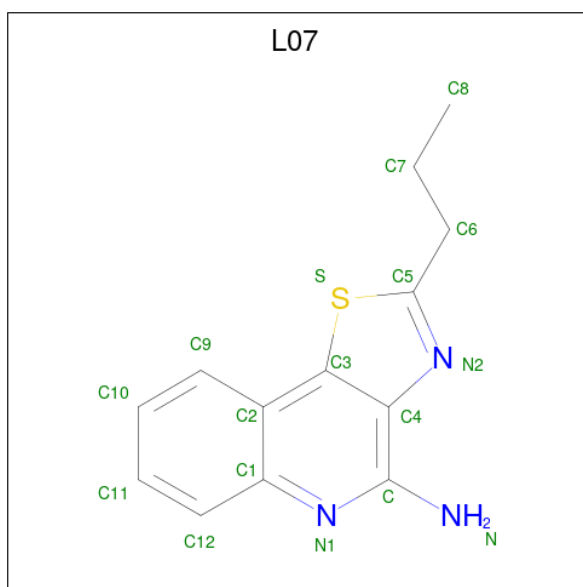
Mol	Chain	Residues	Atoms				ZeroOcc	AltConf	Trace
3	D	3	Total	C	N	O	0	0	0
			39	22	2	15			

- Molecule 4 is an oligosaccharide called 2-acetamido-2-deoxy-beta-D-glucopyranose-(1-4)-2-acetamido-2-deoxy-beta-D-glucopyranose.



Mol	Chain	Residues	Atoms				ZeroOcc	AltConf	Trace
4	G	2	Total	C	N	O	0	0	0
			28	16	2	10			

- Molecule 5 is 2-propyl[1,3]thiazolo[4,5-c]quinolin-4-amine (three-letter code: L07) (formula: C₁₃H₁₃N₃S).



Mol	Chain	Residues	Atoms				ZeroOcc	AltConf
5	A	1	Total	C	N	S	0	0
			17	13	3	1		
5	B	1	Total	C	N	S	0	0
			17	13	3	1		

- Molecule 6 is 2-acetamido-2-deoxy-beta-D-glucopyranose (three-letter code: NAG) (formula: $C_8H_{15}NO_6$).



Mol	Chain	Residues	Atoms				ZeroOcc	AltConf
6	A	1	Total	C	N	O	0	0
			14	8	1	5		

Continued on next page...

Continued from previous page...

Mol	Chain	Residues	Atoms				ZeroOcc	AltConf
6	A	1	Total	C	N	O	0	0
			14	8	1	5		
6	A	1	Total	C	N	O	0	0
			14	8	1	5		
6	B	1	Total	C	N	O	0	0
			14	8	1	5		
6	B	1	Total	C	N	O	0	0
			14	8	1	5		
6	B	1	Total	C	N	O	0	0
			14	8	1	5		

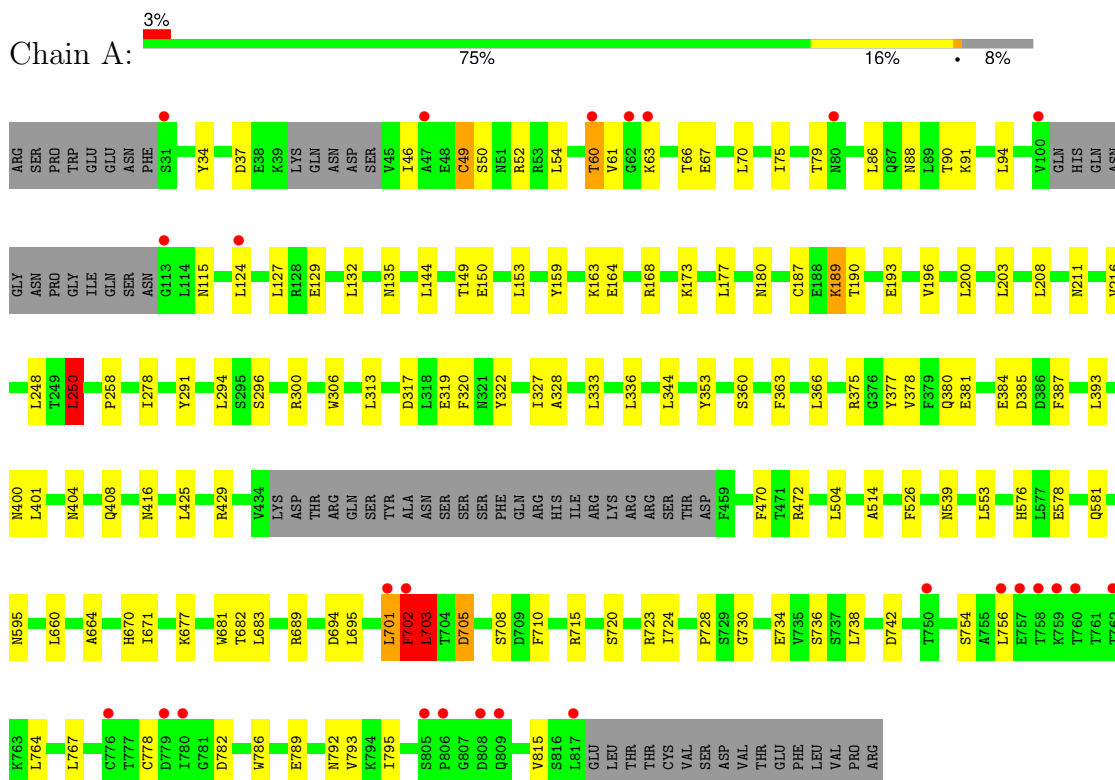
- Molecule 7 is water.

Mol	Chain	Residues	Atoms		ZeroOcc	AltConf
7	A	174	Total	O	0	0
			174	174		
7	B	186	Total	O	0	0
			186	186		

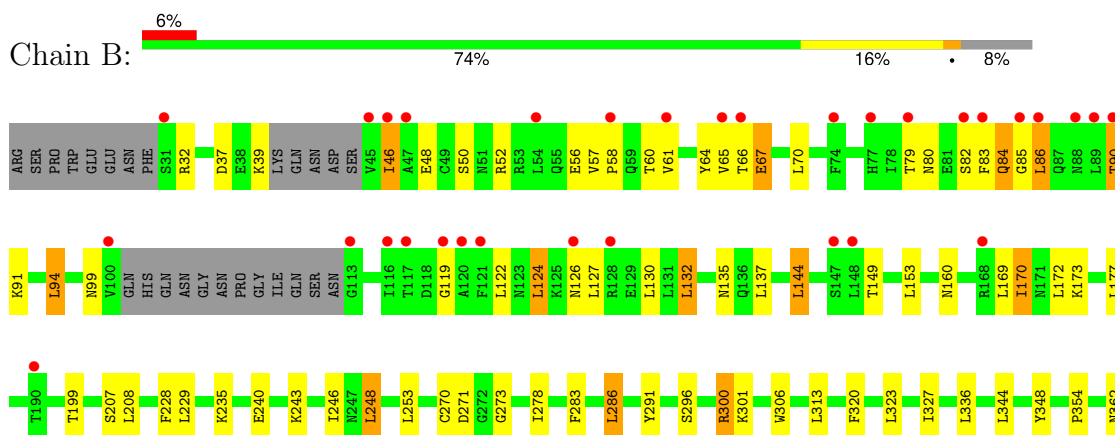
3 Residue-property plots [i](#)

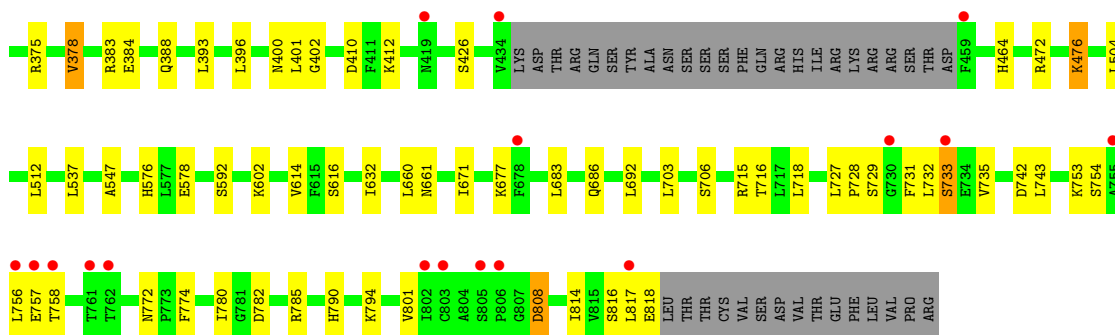
These plots are drawn for all protein, RNA, DNA and oligosaccharide chains in the entry. The first graphic for a chain summarises the proportions of the various outlier classes displayed in the second graphic. The second graphic shows the sequence view annotated by issues in geometry and electron density. Residues are color-coded according to the number of geometric quality criteria for which they contain at least one outlier: green = 0, yellow = 1, orange = 2 and red = 3 or more. A red dot above a residue indicates a poor fit to the electron density ($RSRZ > 2$). Stretches of 2 or more consecutive residues without any outlier are shown as a green connector. Residues present in the sample, but not in the model, are shown in grey.

- Molecule 1: Toll-like receptor 8



- Molecule 1: Toll-like receptor 8





- Molecule 2: alpha-D-mannopyranose-(1-3)-[alpha-D-mannopyranose-(1-6)]beta-D-mannopyranose-(1-4)-2-acetamido-2-deoxy-beta-D-glucopyranose-(1-4)-2-acetamido-2-deoxy-beta-D-glucopyranose

Chain C: 60% 20% 20%



- Molecule 2: alpha-D-mannopyranose-(1-3)-[alpha-D-mannopyranose-(1-6)]beta-D-mannopyranose-(1-4)-2-acetamido-2-deoxy-beta-D-glucopyranose-(1-4)-2-acetamido-2-deoxy-beta-D-glucopyranose

Chain E: 80% 20%



- Molecule 2: alpha-D-mannopyranose-(1-3)-[alpha-D-mannopyranose-(1-6)]beta-D-mannopyranose-(1-4)-2-acetamido-2-deoxy-beta-D-glucopyranose-(1-4)-2-acetamido-2-deoxy-beta-D-glucopyranose

Chain F: 20% 40% 40%



- Molecule 2: alpha-D-mannopyranose-(1-3)-[alpha-D-mannopyranose-(1-6)]beta-D-mannopyranose-(1-4)-2-acetamido-2-deoxy-beta-D-glucopyranose-(1-4)-2-acetamido-2-deoxy-beta-D-glucopyranose

Chain H: 20% 60% 20%



- Molecule 3: beta-D-mannopyranose-(1-4)-2-acetamido-2-deoxy-beta-D-glucopyranose-(1-4)-2-acetamido-2-deoxy-beta-D-glucopyranose

Chain D: 33% 67%

MAG1
MAG2
BMA3

- Molecule 4: 2-acetamido-2-deoxy-beta-D-glucopyranose-(1-4)-2-acetamido-2-deoxy-beta-D-glucopyranose

Chain G: 

MAG1
MAG2

4 Data and refinement statistics

Property	Value	Source
Space group	P 1 21 1	Depositor
Cell constants a, b, c, α , β , γ	72.41Å 154.02Å 86.86Å 90.00° 103.03° 90.00°	Depositor
Resolution (Å)	37.08 – 2.30 37.08 – 2.30	Depositor EDS
% Data completeness (in resolution range)	91.5 (37.08-2.30) 91.5 (37.08-2.30)	Depositor EDS
R_{merge}	(Not available)	Depositor
R_{sym}	0.08	Depositor
$\langle I/\sigma(I) \rangle$ ¹	2.65 (at 2.29Å)	Xtrriage
Refinement program	PHENIX 1.8.1_1168	Depositor
R, R_{free}	0.205 , 0.244 0.206 , 0.246	Depositor DCC
R_{free} test set	3784 reflections (5.03%)	wwPDB-VP
Wilson B-factor (Å ²)	40.7	Xtrriage
Anisotropy	0.287	Xtrriage
Bulk solvent k_{sol} (e/Å ³), B_{sol} (Å ²)	0.33 , 46.7	EDS
L-test for twinning ²	$\langle L \rangle = 0.48$, $\langle L^2 \rangle = 0.31$	Xtrriage
Estimated twinning fraction	No twinning to report.	Xtrriage
F_o, F_c correlation	0.94	EDS
Total number of atoms	12772	wwPDB-VP
Average B, all atoms (Å ²)	55.0	wwPDB-VP

Xtrriage's analysis on translational NCS is as follows: *The largest off-origin peak in the Patterson function is 3.22% of the height of the origin peak. No significant pseudotranslation is detected.*

¹Intensities estimated from amplitudes.

²Theoretical values of $\langle |L| \rangle$, $\langle L^2 \rangle$ for acentric reflections are 0.5, 0.333 respectively for untwinned datasets, and 0.375, 0.2 for perfectly twinned datasets.

5 Model quality

5.1 Standard geometry

Bond lengths and bond angles in the following residue types are not validated in this section: L07, BMA, NAG, MAN

The Z score for a bond length (or angle) is the number of standard deviations the observed value is removed from the expected value. A bond length (or angle) with $|Z| > 5$ is considered an outlier worth inspection. RMSZ is the root-mean-square of all Z scores of the bond lengths (or angles).

Mol	Chain	Bond lengths		Bond angles	
		RMSZ	# Z >5	RMSZ	# Z >5
1	A	0.34	0/6110	0.62	3/8287 (0.0%)
1	B	0.36	0/6121	0.62	0/8302
All	All	0.35	0/12231	0.62	3/16589 (0.0%)

Chiral center outliers are detected by calculating the chiral volume of a chiral center and verifying if the center is modelled as a planar moiety or with the opposite hand. A planarity outlier is detected by checking planarity of atoms in a peptide group, atoms in a mainchain group or atoms of a sidechain that are expected to be planar.

Mol	Chain	#Chirality outliers	#Planarity outliers
1	A	0	2
1	B	0	1
All	All	0	3

There are no bond length outliers.

All (3) bond angle outliers are listed below:

Mol	Chain	Res	Type	Atoms	Z	Observed($^{\circ}$)	Ideal($^{\circ}$)
1	A	250	LEU	CA-CB-CG	6.87	131.11	115.30
1	A	702	PHE	N-CA-C	5.88	126.86	111.00
1	A	703	LEU	CA-CB-CG	5.70	128.41	115.30

There are no chirality outliers.

All (3) planarity outliers are listed below:

Mol	Chain	Res	Type	Group
1	A	701	LEU	Peptide
1	A	702	PHE	Peptide
1	B	86	LEU	Peptide

5.2 Too-close contacts [i](#)

In the following table, the Non-H and H(model) columns list the number of non-hydrogen atoms and hydrogen atoms in the chain respectively. The H(added) column lists the number of hydrogen atoms added and optimized by MolProbity. The Clashes column lists the number of clashes within the asymmetric unit, whereas Symm-Clashes lists symmetry-related clashes.

Mol	Chain	Non-H	H(model)	H(added)	Clashes	Symm-Clashes
1	A	5986	0	5952	74	0
1	B	5997	0	5965	81	0
2	C	61	0	52	1	0
2	E	61	0	52	0	0
2	F	61	0	52	2	0
2	H	61	0	52	1	0
3	D	39	0	34	0	0
4	G	28	0	25	1	0
5	A	17	0	13	1	0
5	B	17	0	13	0	0
6	A	42	0	39	0	0
6	B	42	0	39	1	0
7	A	174	0	0	5	0
7	B	186	0	0	5	0
All	All	12772	0	12288	155	0

The all-atom clashscore is defined as the number of clashes found per 1000 atoms (including hydrogen atoms). The all-atom clashscore for this structure is 6.

All (155) close contacts within the same asymmetric unit are listed below, sorted by their clash magnitude.

Atom-1	Atom-2	Interatomic distance (Å)	Clash overlap (Å)
1:B:753:LYS:HD2	1:B:756:LEU:HD11	1.64	0.80
1:A:34:TYR:O	1:A:60:THR:OG1	2.02	0.77
1:A:67:GLU:HG2	1:A:91:LYS:HB3	1.72	0.72
1:B:817:LEU:O	7:B:1151:HOH:O	2.05	0.72
1:B:37:ASP:OD2	1:B:52:ARG:NH1	2.23	0.72
1:A:384:GLU:OE2	1:A:416:ASN:ND2	2.23	0.70
1:A:250:LEU:HB2	1:A:291:TYR:HB2	1.73	0.70
1:B:384:GLU:OE1	1:B:412:LYS:NZ	2.24	0.69
1:B:79:THR:HG23	1:B:82:SER:H	1.60	0.67
1:A:664:ALA:O	7:A:1120:HOH:O	2.12	0.67
1:B:780:ILE:HD11	1:B:817:LEU:HD23	1.76	0.66
1:B:79:THR:OG1	1:B:80:ASN:N	2.28	0.65
1:A:144:LEU:O	1:A:168:ARG:NH2	2.29	0.65

Continued on next page...

Continued from previous page...

Atom-1	Atom-2	Interatomic distance (Å)	Clash overlap (Å)
1:B:84:GLN:HE22	1:B:86:LEU:HD13	1.61	0.65
1:B:728:PRO:HG2	1:B:731:PHE:HB2	1.79	0.63
1:A:37:ASP:OD2	1:A:52:ARG:NH2	2.32	0.63
1:A:94:LEU:HB2	1:A:132:LEU:HD23	1.81	0.62
1:A:705:ASP:OD1	1:A:705:ASP:N	2.29	0.62
1:A:46:ILE:HG22	1:A:67:GLU:HB2	1.83	0.61
1:B:547:ALA:H	6:B:909:NAG:H82	1.67	0.60
1:B:149:THR:HB	1:B:173:LYS:HD3	1.83	0.60
1:A:50:SER:O	1:A:52:ARG:NH1	2.35	0.60
1:A:470:PHE:CD1	1:A:472:ARG:HG2	2.37	0.59
1:B:67:GLU:HG3	1:B:91:LYS:HB3	1.84	0.59
1:B:614:VAL:HG21	2:H:1:NAG:H61	1.86	0.57
1:A:375:ARG:NH1	7:A:1069:HOH:O	2.39	0.56
1:B:46:ILE:HG22	1:B:67:GLU:HB2	1.88	0.56
1:A:124:LEU:HD13	1:A:127:LEU:HD22	1.88	0.55
1:A:381:GLU:HG3	1:A:408:GLN:HG3	1.88	0.55
1:B:375:ARG:HD2	1:B:400:ASN:HD21	1.71	0.55
1:A:153:LEU:HB2	1:A:177:LEU:HD23	1.89	0.55
1:B:632:ILE:HG22	1:B:661:ASN:HD22	1.72	0.55
1:B:808:ASP:OD1	1:B:808:ASP:N	2.39	0.55
1:B:235:LYS:HD2	1:B:270:CYS:SG	2.47	0.55
1:A:703:LEU:HD21	1:A:724:ILE:HD13	1.88	0.54
1:B:32:ARG:NH2	1:B:790:HIS:O	2.40	0.54
1:B:578:GLU:HG3	1:B:602:LYS:HG2	1.90	0.54
1:B:782:ASP:OD1	1:B:785:ARG:NH1	2.38	0.53
1:A:730:GLY:N	1:A:754:SER:O	2.39	0.52
1:B:84:GLN:NE2	1:B:86:LEU:HD13	2.24	0.52
1:B:153:LEU:HB2	1:B:177:LEU:HD23	1.90	0.52
1:B:160:ASN:ND2	7:B:1125:HOH:O	2.42	0.52
1:A:576:HIS:ND1	1:A:578:GLU:OE2	2.32	0.52
1:B:660:LEU:HD22	1:B:686:GLN:HG3	1.90	0.51
1:A:300:ARG:HG3	1:A:322:TYR:HB2	1.93	0.51
1:A:701:LEU:HA	1:A:723:ARG:O	2.10	0.51
1:B:124:LEU:HG	1:B:127:LEU:HB2	1.92	0.51
1:B:512:LEU:HB2	1:B:537:LEU:HD23	1.93	0.51
1:B:64:TYR:O	7:B:1134:HOH:O	2.18	0.50
1:A:660:LEU:HD21	1:A:683:LEU:HD22	1.93	0.50
1:A:526:PHE:HB3	1:A:553:LEU:HD21	1.94	0.50
1:B:772:ASN:HB2	1:B:774:PHE:CE2	2.47	0.50
1:A:715:ARG:O	1:A:738:LEU:HD12	2.12	0.50
1:B:61:VAL:HG22	1:B:65:VAL:HG11	1.93	0.49

Continued on next page...

Continued from previous page...

Atom-1	Atom-2	Interatomic distance (Å)	Clash overlap (Å)
1:A:792:ASN:ND2	7:A:1144:HOH:O	2.46	0.49
1:B:119:GLY:HA2	1:B:122:LEU:HD13	1.94	0.49
1:A:193:GLU:HB3	1:A:196:VAL:HG13	1.93	0.49
1:A:63:LYS:NZ	1:A:88:ASN:HD21	2.10	0.49
1:A:514:ALA:HA	1:A:539:ASN:O	2.13	0.49
1:A:578:GLU:O	1:A:581:GLN:HG2	2.13	0.49
1:B:354:PRO:HD2	1:B:378:VAL:O	2.13	0.49
1:B:632:ILE:HG22	1:B:661:ASN:ND2	2.27	0.49
1:B:729:SER:OG	1:B:754:SER:HB2	2.12	0.49
1:B:64:TYR:HB2	7:B:1134:HOH:O	2.14	0.48
1:A:115:ASN:ND2	7:A:1163:HOH:O	2.39	0.48
1:A:576:HIS:HB3	1:A:578:GLU:OE1	2.13	0.48
1:A:90:THR:O	1:A:127:LEU:HD12	2.14	0.48
1:B:732:LEU:HD12	1:B:733:SER:N	2.29	0.48
1:B:383:ARG:HA	1:B:410:ASP:OD2	2.14	0.47
1:B:283:PHE:O	1:B:286:LEU:HB2	2.14	0.47
1:B:291:TYR:HB3	2:F:1:NAG:O6	2.14	0.47
1:A:159:TYR:CE1	1:A:187:CYS:HB2	2.48	0.47
1:A:670:HIS:HA	1:A:694:ASP:HB3	1.96	0.47
1:A:681:TRP:CZ2	1:A:703:LEU:HD12	2.50	0.47
1:B:692:LEU:HG	1:B:716:THR:HB	1.95	0.47
1:B:801:VAL:HG23	1:B:814:ILE:HB	1.95	0.47
1:B:169:LEU:HB3	1:B:172:LEU:HG	1.96	0.46
1:A:682:THR:HG22	1:A:710:PHE:CZ	2.50	0.46
1:B:124:LEU:HD13	1:B:124:LEU:HA	1.81	0.46
1:A:702:PHE:O	1:A:702:PHE:CG	2.68	0.46
1:B:273:GLY:O	1:B:300:ARG:NH2	2.42	0.46
1:B:83:PHE:HZ	1:B:94:LEU:HD21	1.81	0.46
1:B:229:LEU:HB2	1:B:253:LEU:HD23	1.98	0.46
1:B:327:ILE:HG12	1:B:344:LEU:HD13	1.98	0.46
1:A:163:LYS:NZ	1:A:193:GLU:OE2	2.34	0.46
1:A:327:ILE:HG12	1:A:344:LEU:HD13	1.97	0.46
1:A:682:THR:HA	1:A:710:PHE:CG	2.51	0.46
1:B:83:PHE:O	1:B:84:GLN:HG3	2.16	0.46
1:B:84:GLN:NE2	1:B:85:GLY:O	2.49	0.46
1:B:375:ARG:HD2	1:B:400:ASN:ND2	2.30	0.46
1:A:333:LEU:HD23	1:A:363:PHE:HA	1.98	0.45
1:A:470:PHE:CE1	1:A:472:ARG:HG2	2.52	0.45
1:A:149:THR:OG1	1:A:150:GLU:OE1	2.24	0.45
1:A:278:ILE:HB	1:A:306:TRP:CZ2	2.51	0.45
1:A:63:LYS:O	1:A:88:ASN:ND2	2.50	0.45

Continued on next page...

Continued from previous page...

Atom-1	Atom-2	Interatomic distance (Å)	Clash overlap (Å)
1:B:177:LEU:HB2	1:B:208:LEU:HD23	1.99	0.45
1:B:130:LEU:HG	1:B:132:LEU:HD12	1.98	0.45
1:A:401:LEU:HB2	1:A:425:LEU:HD23	1.99	0.45
1:A:375:ARG:HD2	1:A:400:ASN:HD21	1.81	0.45
1:B:718:LEU:HA	1:B:742:ASP:HB3	1.99	0.45
1:A:200:LEU:HD12	1:A:203:LEU:HD22	1.99	0.44
1:B:124:LEU:C	1:B:126:ASN:H	2.20	0.44
1:A:173:LYS:O	1:A:203:LEU:HD12	2.17	0.44
1:A:764:LEU:O	1:A:793:VAL:HG22	2.18	0.44
1:B:727:LEU:HD21	1:B:743:LEU:HD13	2.00	0.44
1:A:296:SER:HA	1:A:320:PHE:O	2.18	0.44
1:B:402:GLY:HA2	1:B:426:SER:O	2.17	0.44
1:B:56:GLU:HG2	1:B:57:VAL:N	2.33	0.44
1:B:58:PRO:HD2	1:B:70:LEU:HD21	1.98	0.44
1:B:170:ILE:H	1:B:170:ILE:HG13	1.63	0.44
1:A:429:ARG:HA	1:A:429:ARG:HD2	1.86	0.43
1:B:153:LEU:HA	1:B:153:LEU:HD23	1.78	0.43
1:A:132:LEU:HB3	1:A:135:ASN:HD22	1.82	0.43
1:A:291:TYR:HB3	2:C:1:NAG:O6	2.18	0.43
1:A:595:ASN:O	1:A:595:ASN:ND2	2.49	0.43
1:B:66:THR:HG23	1:B:90:THR:HB	2.00	0.43
1:B:592:SER:HA	1:B:616:SER:O	2.19	0.43
1:B:296:SER:HA	1:B:320:PHE:O	2.18	0.43
1:B:757:GLU:HA	1:B:758:THR:CB	2.49	0.43
1:A:366:LEU:O	1:A:393:LEU:HD22	2.19	0.43
1:B:135:ASN:HB2	1:B:137:LEU:HD13	1.99	0.43
1:B:240:GLU:HG3	1:B:243:LYS:NZ	2.34	0.43
1:A:189:LYS:HE2	1:A:190:THR:O	2.19	0.42
1:B:207:SER:HA	1:B:228:PHE:HB2	2.02	0.42
1:A:49:CYS:HB3	1:A:70:LEU:HD23	2.00	0.42
1:A:387:PHE:HD1	1:A:387:PHE:HA	1.72	0.42
1:B:66:THR:HG22	1:B:67:GLU:N	2.34	0.42
1:B:464:HIS:HB3	2:F:4:MAN:H2	2.02	0.42
1:A:695:LEU:HA	1:A:695:LEU:HD23	1.76	0.42
1:B:576:HIS:HB3	1:B:578:GLU:OE1	2.20	0.42
1:A:129:GLU:HG3	1:A:150:GLU:HB2	2.02	0.42
1:A:258:PRO:HA	1:A:296:SER:O	2.19	0.42
1:B:286:LEU:HD12	1:B:286:LEU:HA	1.90	0.42
1:A:708:SER:HB3	1:A:734:GLU:OE1	2.20	0.41
1:A:177:LEU:HB2	1:A:208:LEU:HD23	2.01	0.41
1:A:576:HIS:NE2	7:A:1042:HOH:O	2.37	0.41

Continued on next page...

Continued from previous page...

Atom-1	Atom-2	Interatomic distance (Å)	Clash overlap (Å)
1:A:180:ASN:HB2	1:A:211:ASN:OD1	2.20	0.41
1:B:248:LEU:HD23	1:B:248:LEU:HA	1.93	0.41
1:B:660:LEU:HD21	1:B:683:LEU:HD22	2.02	0.41
1:A:353:TYR:CZ	1:A:380:GLN:HG2	2.55	0.41
1:A:720:SER:HB3	1:A:742:ASP:OD2	2.21	0.41
5:A:901:L07:H2	1:B:348:TYR:CE1	2.56	0.41
1:B:362:ASN:ND2	7:B:1130:HOH:O	2.48	0.41
1:A:313:LEU:HD23	1:A:336:LEU:HD22	2.02	0.41
1:A:377:TYR:N	1:A:404:ASN:OD1	2.53	0.41
1:B:313:LEU:HD23	1:B:336:LEU:HD22	2.03	0.41
1:B:393:LEU:HD12	1:B:396:LEU:HD22	2.02	0.41
1:B:476:LYS:HB2	4:G:1:NAG:O7	2.21	0.41
1:A:328:ALA:O	1:A:360:SER:HB2	2.22	0.40
1:A:767:LEU:HB3	1:A:795:ILE:HD13	2.03	0.40
1:B:144:LEU:HD12	1:B:144:LEU:HA	1.82	0.40
1:A:756:LEU:HD22	1:A:786:TRP:CD1	2.56	0.40
1:A:705:ASP:HB3	1:A:728:PRO:HB2	2.04	0.40
1:B:278:ILE:HB	1:B:306:TRP:CZ2	2.57	0.40
1:B:323:LEU:HD23	1:B:323:LEU:HA	1.89	0.40

There are no symmetry-related clashes.

5.3 Torsion angles [i](#)

5.3.1 Protein backbone [i](#)

In the following table, the Percentiles column shows the percent Ramachandran outliers of the chain as a percentile score with respect to all X-ray entries followed by that with respect to entries of similar resolution.

The Analysed column shows the number of residues for which the backbone conformation was analysed, and the total number of residues.

Mol	Chain	Analysed	Favoured	Allowed	Outliers	Percentiles
1	A	738/811 (91%)	708 (96%)	29 (4%)	1 (0%)	48 60
1	B	739/811 (91%)	705 (95%)	32 (4%)	2 (0%)	37 47
All	All	1477/1622 (91%)	1413 (96%)	61 (4%)	3 (0%)	44 55

All (3) Ramachandran outliers are listed below:

Mol	Chain	Res	Type
1	A	378	VAL
1	B	378	VAL
1	B	170	ILE

5.3.2 Protein sidechains [i](#)

In the following table, the Percentiles column shows the percent sidechain outliers of the chain as a percentile score with respect to all X-ray entries followed by that with respect to entries of similar resolution.

The Analysed column shows the number of residues for which the sidechain conformation was analysed, and the total number of residues.

Mol	Chain	Analysed	Rotameric	Outliers	Percentiles	
1	A	684/755 (91%)	656 (96%)	28 (4%)	26	39
1	B	686/755 (91%)	650 (95%)	36 (5%)	19	28
All	All	1370/1510 (91%)	1306 (95%)	64 (5%)	22	32

All (64) residues with a non-rotameric sidechain are listed below:

Mol	Chain	Res	Type
1	A	49	CYS
1	A	54	LEU
1	A	60	THR
1	A	61	VAL
1	A	66	THR
1	A	75	ILE
1	A	79	THR
1	A	86	LEU
1	A	164	GLU
1	A	189	LYS
1	A	216	VAL
1	A	248	LEU
1	A	250	LEU
1	A	294	LEU
1	A	317	ASP
1	A	319	GLU
1	A	385	ASP
1	A	504	LEU
1	A	671	ILE
1	A	677	LYS
1	A	689	ARG

Continued on next page...

Continued from previous page...

Mol	Chain	Res	Type
1	A	703	LEU
1	A	705	ASP
1	A	736	SER
1	A	778	CYS
1	A	782	ASP
1	A	789	GLU
1	A	815	VAL
1	B	39	LYS
1	B	46	ILE
1	B	48	GLU
1	B	50	SER
1	B	60	THR
1	B	67	GLU
1	B	84	GLN
1	B	90	THR
1	B	94	LEU
1	B	99	ASN
1	B	124	LEU
1	B	132	LEU
1	B	144	LEU
1	B	199	THR
1	B	246	ILE
1	B	248	LEU
1	B	271	ASP
1	B	286	LEU
1	B	300	ARG
1	B	301	LYS
1	B	388	GLN
1	B	401	LEU
1	B	472	ARG
1	B	476	LYS
1	B	504	LEU
1	B	671	ILE
1	B	677	LYS
1	B	703	LEU
1	B	706	SER
1	B	715	ARG
1	B	733	SER
1	B	735	VAL
1	B	794	LYS
1	B	808	ASP
1	B	816	SER

Continued on next page...

Continued from previous page...

Mol	Chain	Res	Type
1	B	818	GLU

Sometimes sidechains can be flipped to improve hydrogen bonding and reduce clashes. All (2) such sidechains are listed below:

Mol	Chain	Res	Type
1	A	88	ASN
1	B	84	GLN

5.3.3 RNA [i](#)

There are no RNA molecules in this entry.

5.4 Non-standard residues in protein, DNA, RNA chains [i](#)

There are no non-standard protein/DNA/RNA residues in this entry.

5.5 Carbohydrates [i](#)

25 monosaccharides are modelled in this entry.

In the following table, the Counts columns list the number of bonds (or angles) for which Mogul statistics could be retrieved, the number of bonds (or angles) that are observed in the model and the number of bonds (or angles) that are defined in the Chemical Component Dictionary. The Link column lists molecule types, if any, to which the group is linked. The Z score for a bond length (or angle) is the number of standard deviations the observed value is removed from the expected value. A bond length (or angle) with $|Z| > 2$ is considered an outlier worth inspection. RMSZ is the root-mean-square of all Z scores of the bond lengths (or angles).

Mol	Type	Chain	Res	Link	Bond lengths			Bond angles		
					Counts	RMSZ	$\# Z > 2$	Counts	RMSZ	$\# Z > 2$
2	NAG	C	1	2,1	14,14,15	0.66	0	17,19,21	1.43	2 (11%)
2	NAG	C	2	2	14,14,15	0.65	0	17,19,21	0.80	0
2	BMA	C	3	2	11,11,12	0.85	0	15,15,17	0.77	0
2	MAN	C	4	2	11,11,12	0.67	0	15,15,17	0.88	1 (6%)
2	MAN	C	5	2	11,11,12	0.61	0	15,15,17	0.63	0
3	NAG	D	1	1,3	14,14,15	0.54	0	17,19,21	1.10	2 (11%)
3	NAG	D	2	3	14,14,15	0.58	0	17,19,21	0.91	0
3	BMA	D	3	3	11,11,12	1.11	1 (9%)	15,15,17	1.24	2 (13%)
2	NAG	E	1	2,1	14,14,15	0.50	0	17,19,21	0.94	0
2	NAG	E	2	2	14,14,15	0.65	0	17,19,21	0.76	0

Mol	Type	Chain	Res	Link	Bond lengths			Bond angles		
					Counts	RMSZ	# Z > 2	Counts	RMSZ	# Z > 2
2	BMA	E	3	2	11,11,12	0.99	1 (9%)	15,15,17	0.95	0
2	MAN	E	4	2	11,11,12	0.58	0	15,15,17	0.87	0
2	MAN	E	5	2	11,11,12	0.62	0	15,15,17	0.70	0
2	NAG	F	1	2,1	14,14,15	0.62	0	17,19,21	1.18	3 (17%)
2	NAG	F	2	2	14,14,15	0.68	0	17,19,21	0.72	0
2	BMA	F	3	2	11,11,12	1.09	1 (9%)	15,15,17	0.82	0
2	MAN	F	4	2	11,11,12	0.52	0	15,15,17	1.09	1 (6%)
2	MAN	F	5	2	11,11,12	0.69	0	15,15,17	0.98	1 (6%)
4	NAG	G	1	1,4	14,14,15	0.66	0	17,19,21	1.10	2 (11%)
4	NAG	G	2	4	14,14,15	0.56	0	17,19,21	1.55	2 (11%)
2	NAG	H	1	2,1	14,14,15	0.61	0	17,19,21	1.57	3 (17%)
2	NAG	H	2	2	14,14,15	0.76	0	17,19,21	0.89	1 (5%)
2	BMA	H	3	2	11,11,12	0.62	0	15,15,17	0.77	0
2	MAN	H	4	2	11,11,12	0.71	0	15,15,17	0.95	1 (6%)
2	MAN	H	5	2	11,11,12	0.69	0	15,15,17	0.85	1 (6%)

In the following table, the Chirals column lists the number of chiral outliers, the number of chiral centers analysed, the number of these observed in the model and the number defined in the Chemical Component Dictionary. Similar counts are reported in the Torsion and Rings columns. '-' means no outliers of that kind were identified.

Mol	Type	Chain	Res	Link	Chirals	Torsions	Rings
2	NAG	C	1	2,1	-	2/6/23/26	0/1/1/1
2	NAG	C	2	2	-	0/6/23/26	0/1/1/1
2	BMA	C	3	2	-	0/2/19/22	0/1/1/1
2	MAN	C	4	2	-	2/2/19/22	0/1/1/1
2	MAN	C	5	2	-	2/2/19/22	0/1/1/1
3	NAG	D	1	1,3	-	0/6/23/26	0/1/1/1
3	NAG	D	2	3	-	0/6/23/26	0/1/1/1
3	BMA	D	3	3	-	2/2/19/22	0/1/1/1
2	NAG	E	1	2,1	-	0/6/23/26	0/1/1/1
2	NAG	E	2	2	-	0/6/23/26	0/1/1/1
2	BMA	E	3	2	-	2/2/19/22	0/1/1/1
2	MAN	E	4	2	-	0/2/19/22	0/1/1/1
2	MAN	E	5	2	-	2/2/19/22	0/1/1/1
2	NAG	F	1	2,1	-	2/6/23/26	0/1/1/1
2	NAG	F	2	2	-	0/6/23/26	0/1/1/1
2	BMA	F	3	2	-	0/2/19/22	0/1/1/1

Continued on next page...

Continued from previous page...

Mol	Type	Chain	Res	Link	Chirals	Torsions	Rings
2	MAN	F	4	2	-	0/2/19/22	0/1/1/1
2	MAN	F	5	2	-	2/2/19/22	0/1/1/1
4	NAG	G	1	1,4	-	0/6/23/26	0/1/1/1
4	NAG	G	2	4	-	2/6/23/26	0/1/1/1
2	NAG	H	1	2,1	-	2/6/23/26	0/1/1/1
2	NAG	H	2	2	-	2/6/23/26	0/1/1/1
2	BMA	H	3	2	-	0/2/19/22	0/1/1/1
2	MAN	H	4	2	-	0/2/19/22	0/1/1/1
2	MAN	H	5	2	-	0/2/19/22	0/1/1/1

All (3) bond length outliers are listed below:

Mol	Chain	Res	Type	Atoms	Z	Observed(Å)	Ideal(Å)
3	D	3	BMA	C2-C3	2.67	1.56	1.52
2	E	3	BMA	O5-C1	-2.63	1.39	1.43
2	F	3	BMA	O5-C1	-2.11	1.40	1.43

All (22) bond angle outliers are listed below:

Mol	Chain	Res	Type	Atoms	Z	Observed(°)	Ideal(°)
4	G	2	NAG	C1-O5-C5	3.92	117.44	112.19
2	C	1	NAG	C1-O5-C5	3.59	117.00	112.19
2	H	1	NAG	C1-O5-C5	3.31	116.62	112.19
3	D	1	NAG	C2-N2-C7	-2.74	119.23	122.90
2	F	1	NAG	C1-O5-C5	2.73	115.85	112.19
2	C	1	NAG	C2-N2-C7	2.70	126.53	122.90
4	G	1	NAG	C2-N2-C7	-2.65	119.35	122.90
3	D	3	BMA	C2-C3-C4	2.64	115.50	110.86
2	H	1	NAG	O5-C1-C2	-2.54	107.36	111.29
4	G	2	NAG	C3-C4-C5	2.50	114.77	110.23
3	D	3	BMA	C1-C2-C3	2.49	113.27	109.64
3	D	1	NAG	O5-C1-C2	-2.47	107.47	111.29
2	H	4	MAN	C1-O5-C5	-2.44	108.91	112.19
2	H	1	NAG	C3-C4-C5	2.18	114.18	110.23
2	F	1	NAG	C6-C5-C4	-2.16	107.72	113.02
2	F	4	MAN	O5-C1-C2	-2.15	105.67	110.79
2	F	5	MAN	O5-C1-C2	-2.14	105.68	110.79
2	C	4	MAN	C1-O5-C5	-2.09	109.38	112.19
2	F	1	NAG	O6-C6-C5	-2.09	104.22	111.33
2	H	2	NAG	C2-N2-C7	-2.07	120.13	122.90
2	H	5	MAN	O5-C1-C2	-2.02	105.96	110.79

Continued on next page...

Continued from previous page...

Mol	Chain	Res	Type	Atoms	Z	Observed(°)	Ideal(°)
4	G	1	NAG	C1-O5-C5	2.01	114.89	112.19

There are no chirality outliers.

All (22) torsion outliers are listed below:

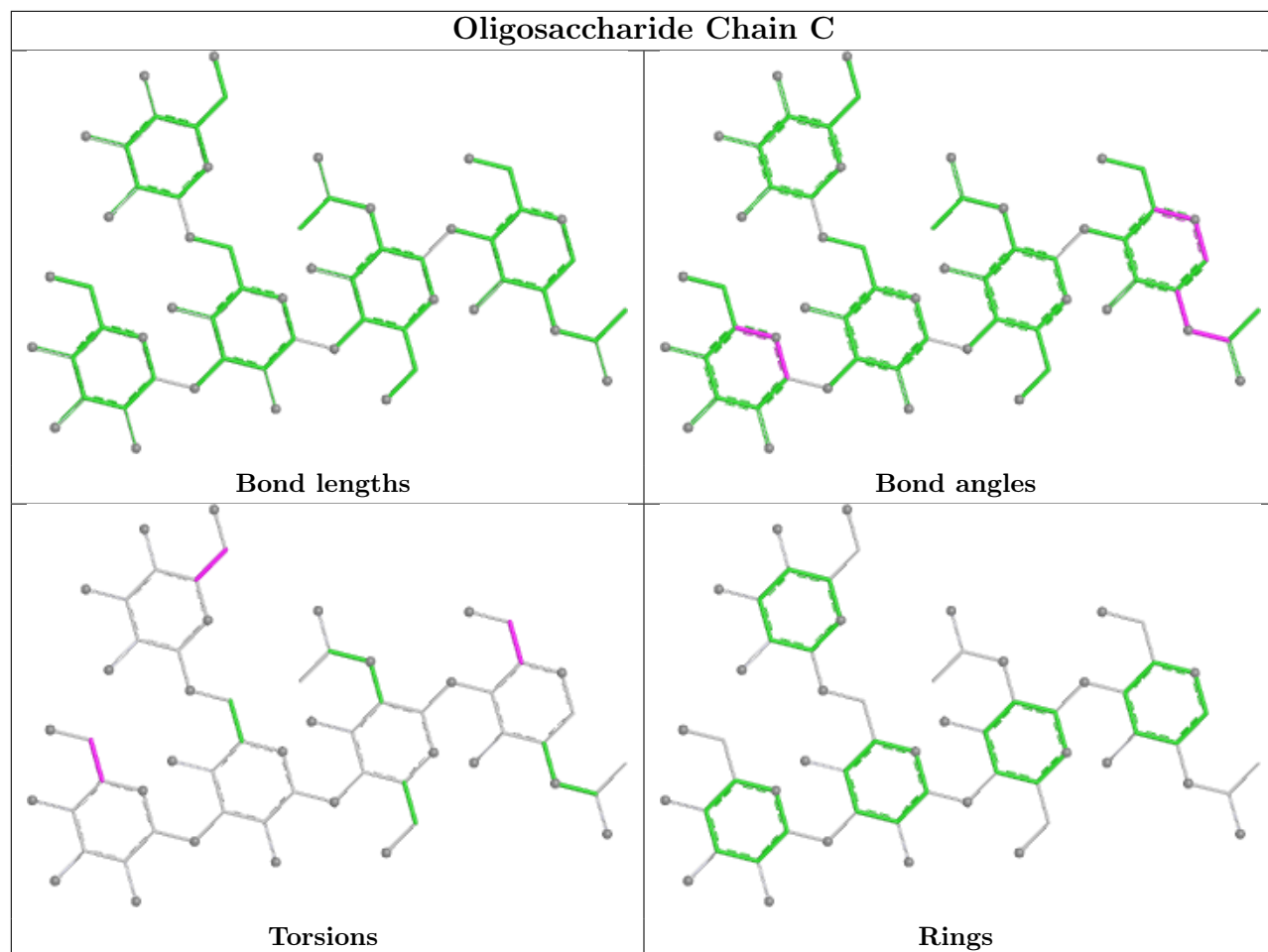
Mol	Chain	Res	Type	Atoms
2	F	5	MAN	O5-C5-C6-O6
2	C	5	MAN	O5-C5-C6-O6
4	G	2	NAG	O7-C7-N2-C2
2	E	5	MAN	O5-C5-C6-O6
2	F	5	MAN	C4-C5-C6-O6
4	G	2	NAG	C8-C7-N2-C2
2	H	1	NAG	O5-C5-C6-O6
3	D	3	BMA	C4-C5-C6-O6
2	H	1	NAG	C4-C5-C6-O6
2	F	1	NAG	C4-C5-C6-O6
2	C	5	MAN	C4-C5-C6-O6
2	C	1	NAG	C4-C5-C6-O6
2	H	2	NAG	C4-C5-C6-O6
2	E	5	MAN	C4-C5-C6-O6
2	F	1	NAG	O5-C5-C6-O6
2	E	3	BMA	C4-C5-C6-O6
2	C	1	NAG	O5-C5-C6-O6
2	H	2	NAG	O5-C5-C6-O6
3	D	3	BMA	O5-C5-C6-O6
2	C	4	MAN	C4-C5-C6-O6
2	E	3	BMA	O5-C5-C6-O6
2	C	4	MAN	O5-C5-C6-O6

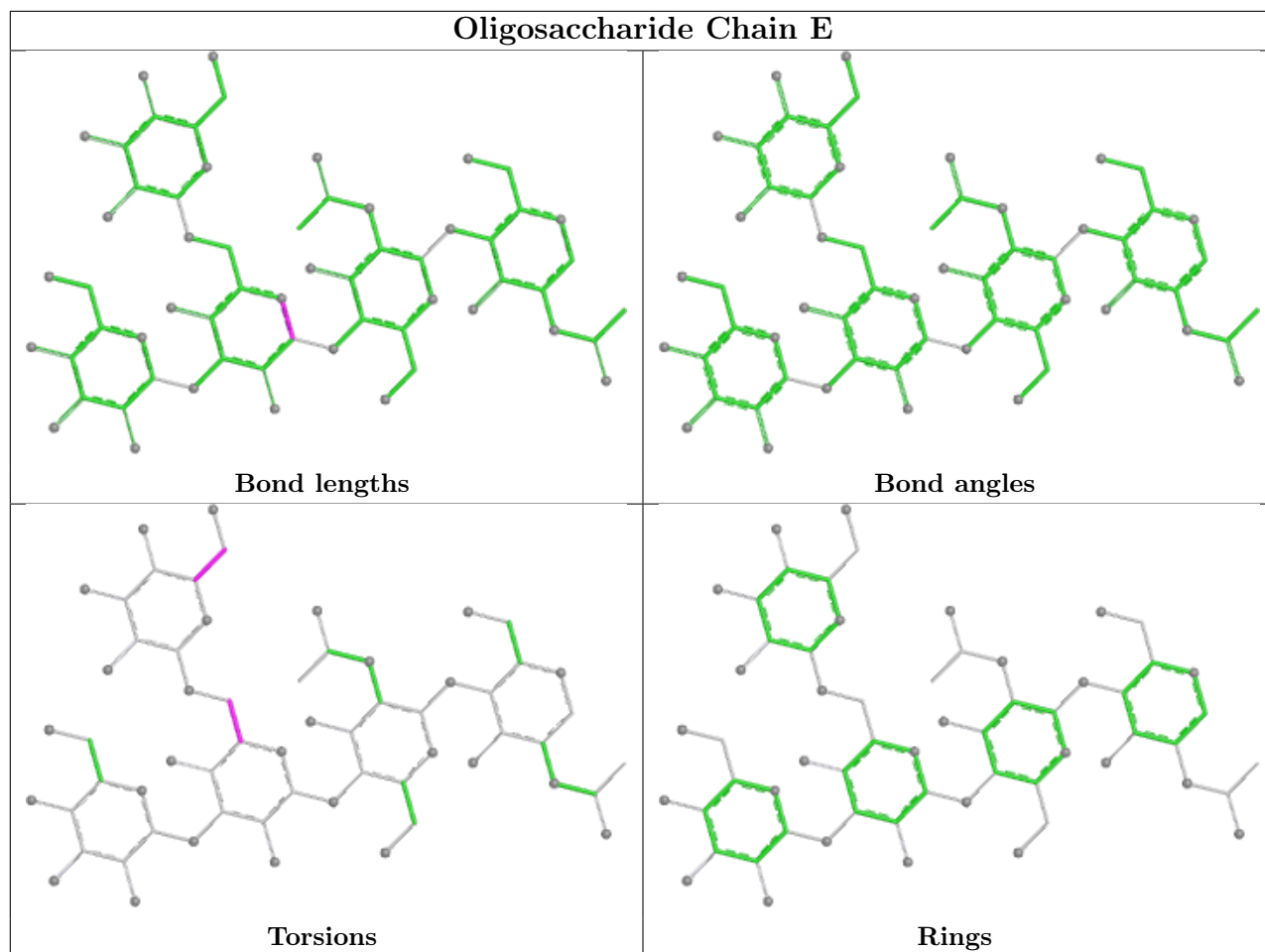
There are no ring outliers.

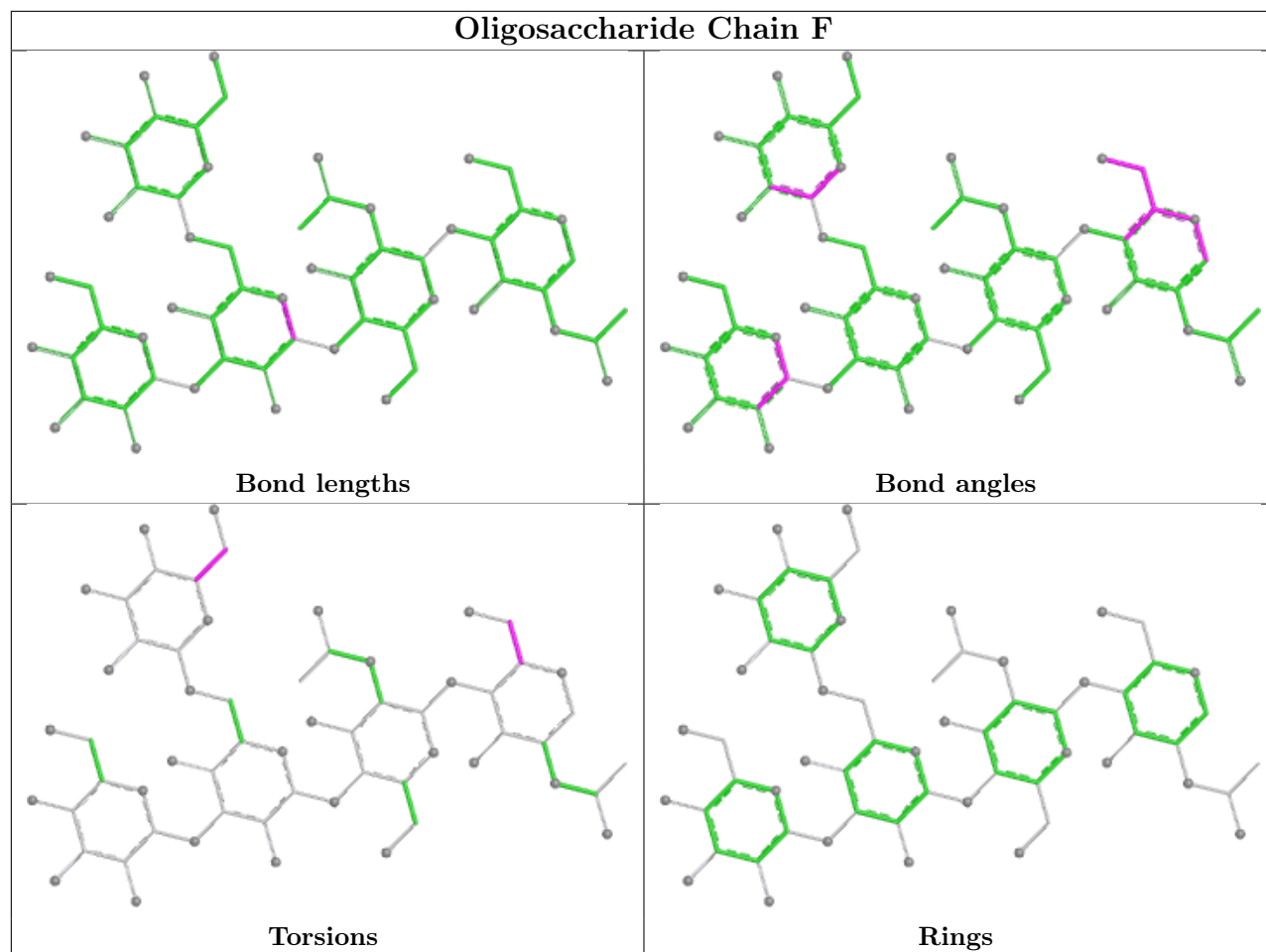
5 monomers are involved in 5 short contacts:

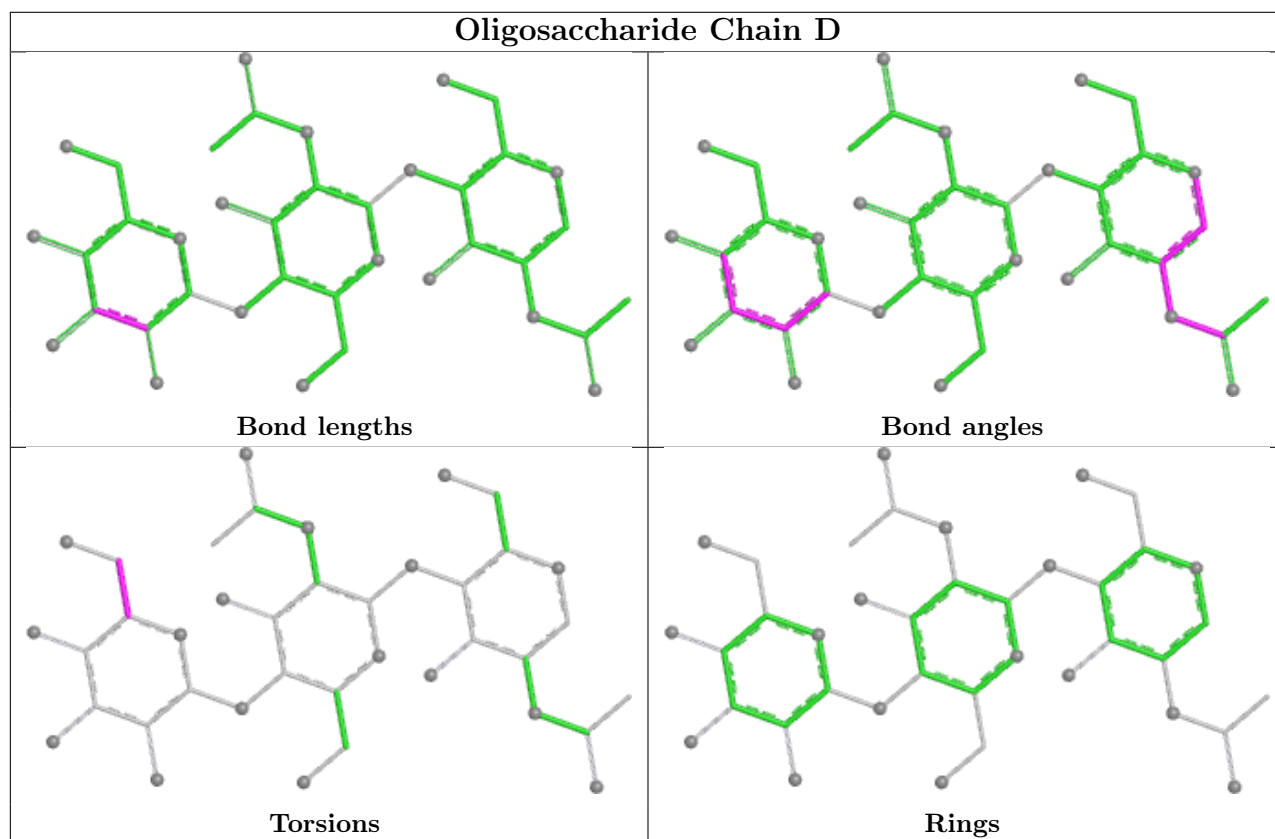
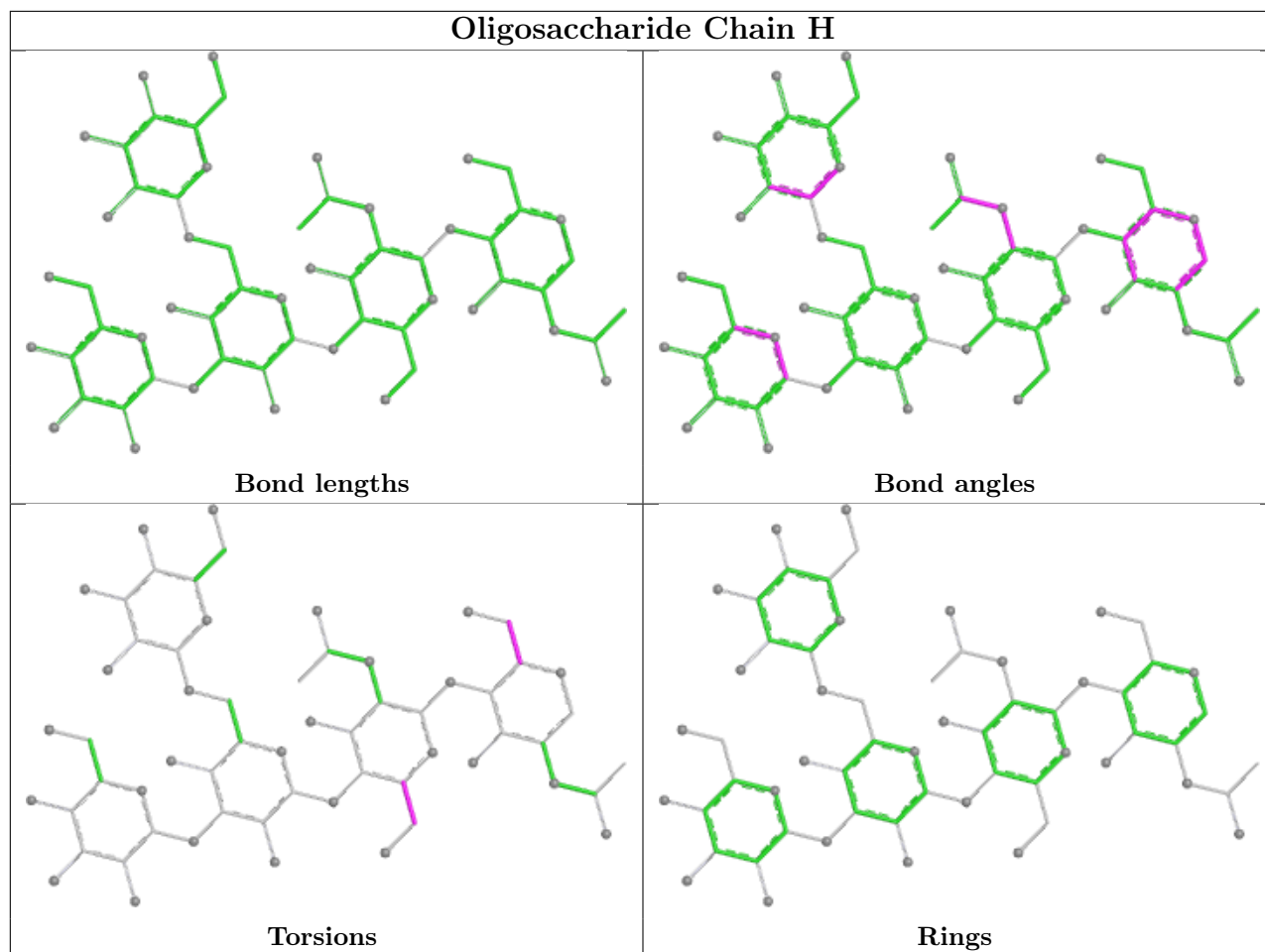
Mol	Chain	Res	Type	Clashes	Symm-Clashes
2	F	4	MAN	1	0
2	C	1	NAG	1	0
4	G	1	NAG	1	0
2	F	1	NAG	1	0
2	H	1	NAG	1	0

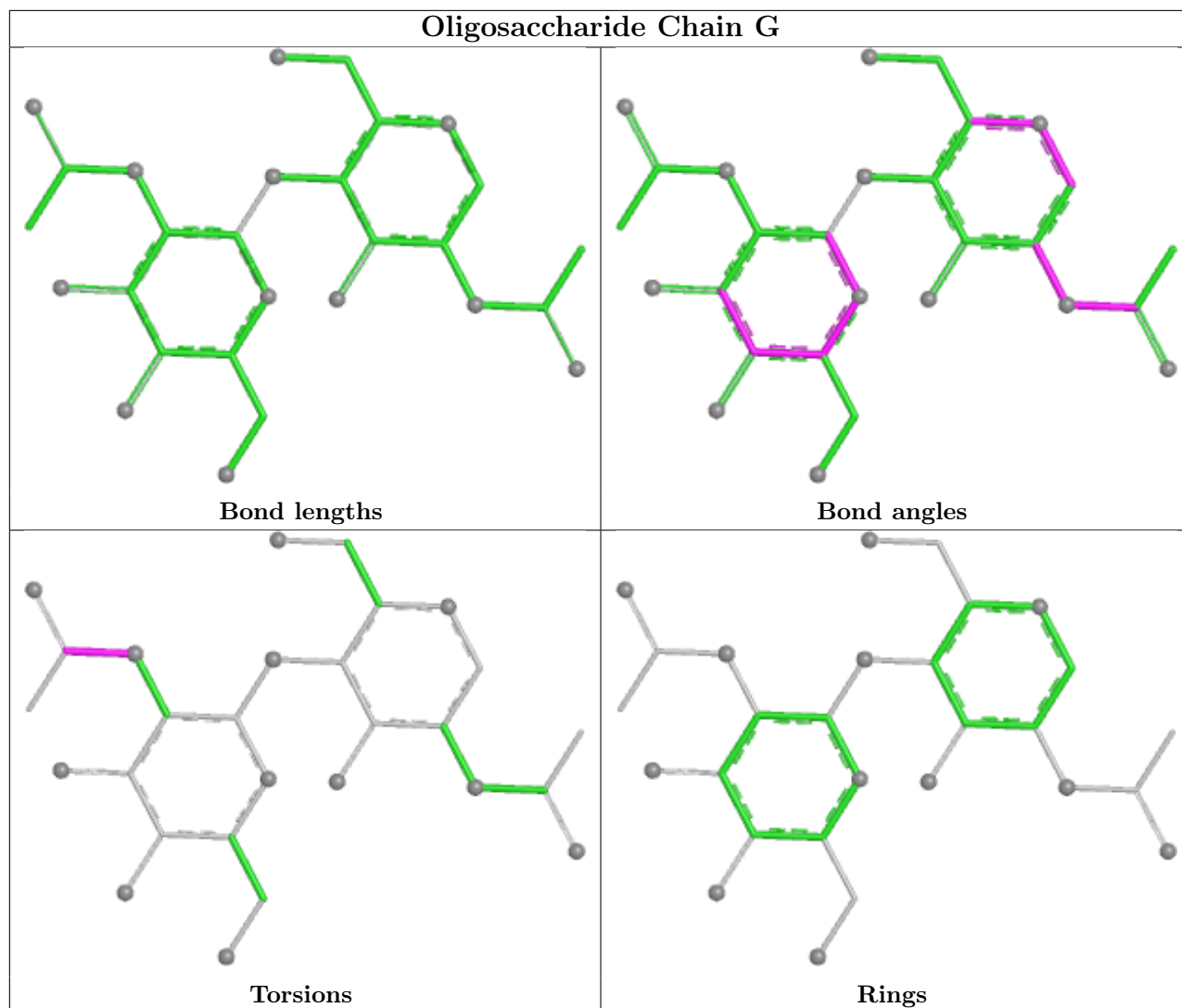
The following is a two-dimensional graphical depiction of Mogul quality analysis of bond lengths, bond angles, torsion angles, and ring geometry for oligosaccharide.











5.6 Ligand geometry [i](#)

8 ligands are modelled in this entry.

In the following table, the Counts columns list the number of bonds (or angles) for which Mogul statistics could be retrieved, the number of bonds (or angles) that are observed in the model and the number of bonds (or angles) that are defined in the Chemical Component Dictionary. The Link column lists molecule types, if any, to which the group is linked. The Z score for a bond length (or angle) is the number of standard deviations the observed value is removed from the expected value. A bond length (or angle) with $|Z| > 2$ is considered an outlier worth inspection. RMSZ is the root-mean-square of all Z scores of the bond lengths (or angles).

Mol	Type	Chain	Res	Link	Bond lengths			Bond angles		
					Counts	RMSZ	$\# Z > 2$	Counts	RMSZ	$\# Z > 2$
6	NAG	A	910	1	14,14,15	0.65	0	17,19,21	0.71	0
5	L07	B	901	-	14,19,19	1.77	2 (14%)	18,27,27	1.06	1 (5%)
6	NAG	B	909	1	14,14,15	0.46	0	17,19,21	1.22	2 (11%)

Mol	Type	Chain	Res	Link	Bond lengths			Bond angles		
					Counts	RMSZ	# Z > 2	Counts	RMSZ	# Z > 2
6	NAG	B	915	1	14,14,15	0.64	0	17,19,21	1.08	2 (11%)
5	L07	A	901	-	14,19,19	1.75	2 (14%)	18,27,27	0.93	1 (5%)
6	NAG	A	916	1	14,14,15	0.50	0	17,19,21	1.88	6 (35%)
6	NAG	B	916	1	14,14,15	0.60	0	17,19,21	1.53	1 (5%)
6	NAG	A	917	1	14,14,15	0.52	0	17,19,21	1.76	1 (5%)

In the following table, the Chirals column lists the number of chiral outliers, the number of chiral centers analysed, the number of these observed in the model and the number defined in the Chemical Component Dictionary. Similar counts are reported in the Torsion and Rings columns. '-' means no outliers of that kind were identified.

Mol	Type	Chain	Res	Link	Chirals	Torsions	Rings
6	NAG	A	910	1	-	4/6/23/26	0/1/1/1
5	L07	B	901	-	-	1/2/3/3	0/3/3/3
6	NAG	B	909	1	-	2/6/23/26	0/1/1/1
6	NAG	B	915	1	-	0/6/23/26	0/1/1/1
5	L07	A	901	-	-	1/2/3/3	0/3/3/3
6	NAG	A	916	1	-	2/6/23/26	0/1/1/1
6	NAG	B	916	1	-	0/6/23/26	0/1/1/1
6	NAG	A	917	1	-	1/6/23/26	0/1/1/1

All (4) bond length outliers are listed below:

Mol	Chain	Res	Type	Atoms	Z	Observed(Å)	Ideal(Å)
5	A	901	L07	C2-C1	4.75	1.50	1.41
5	B	901	L07	C2-C1	4.44	1.49	1.41
5	B	901	L07	C6-C5	2.90	1.51	1.49
5	A	901	L07	C6-C5	2.29	1.51	1.49

All (14) bond angle outliers are listed below:

Mol	Chain	Res	Type	Atoms	Z	Observed(°)	Ideal(°)
6	A	917	NAG	C1-O5-C5	6.25	120.57	112.19
6	B	916	NAG	C1-O5-C5	5.29	119.28	112.19
6	A	916	NAG	C1-O5-C5	4.63	118.40	112.19
6	B	915	NAG	C2-N2-C7	-3.34	118.42	122.90
6	B	909	NAG	C2-N2-C7	-2.94	118.96	122.90
6	A	916	NAG	C3-C4-C5	2.86	115.42	110.23
6	B	909	NAG	C1-O5-C5	2.86	116.01	112.19
6	A	916	NAG	O5-C1-C2	-2.74	107.05	111.29

Continued on next page...

Continued from previous page...

Mol	Chain	Res	Type	Atoms	Z	Observed(°)	Ideal(°)
6	A	916	NAG	C2-N2-C7	-2.55	119.49	122.90
6	A	916	NAG	O5-C5-C4	2.50	116.91	110.83
5	A	901	L07	C2-C3-S	2.12	128.51	124.59
6	A	916	NAG	C6-C5-C4	-2.10	107.86	113.02
6	B	915	NAG	O5-C1-C2	-2.05	108.12	111.29
5	B	901	L07	C2-C3-S	2.01	128.30	124.59

There are no chirality outliers.

All (11) torsion outliers are listed below:

Mol	Chain	Res	Type	Atoms
5	A	901	L07	N2-C5-C6-C7
5	B	901	L07	N2-C5-C6-C7
6	A	916	NAG	C4-C5-C6-O6
6	A	910	NAG	O5-C5-C6-O6
6	A	910	NAG	C8-C7-N2-C2
6	A	910	NAG	C4-C5-C6-O6
6	A	916	NAG	O5-C5-C6-O6
6	A	910	NAG	O7-C7-N2-C2
6	B	909	NAG	C8-C7-N2-C2
6	A	917	NAG	O5-C5-C6-O6
6	B	909	NAG	O7-C7-N2-C2

There are no ring outliers.

2 monomers are involved in 2 short contacts:

Mol	Chain	Res	Type	Clashes	Symm-Clashes
6	B	909	NAG	1	0
5	A	901	L07	1	0

5.7 Other polymers [i](#)

There are no such residues in this entry.

5.8 Polymer linkage issues [i](#)

There are no chain breaks in this entry.

6 Fit of model and data

6.1 Protein, DNA and RNA chains

In the following table, the column labelled ‘#RSRZ > 2’ contains the number (and percentage) of RSRZ outliers, followed by percent RSRZ outliers for the chain as percentile scores relative to all X-ray entries and entries of similar resolution. The OWAB column contains the minimum, median, 95th percentile and maximum values of the occupancy-weighted average B-factor per residue. The column labelled ‘Q < 0.9’ lists the number of (and percentage) of residues with an average occupancy less than 0.9.

Mol	Chain	Analysed	<RSRZ>	#RSRZ>2	OWAB(Å ²)	Q<0.9
1	A	746/811 (91%)	0.27	26 (3%) 47 49	27, 52, 87, 113	0
1	B	747/811 (92%)	0.32	49 (6%) 26 27	27, 52, 94, 117	0
All	All	1493/1622 (92%)	0.29	75 (5%) 35 36	27, 52, 92, 117	0

All (75) RSRZ outliers are listed below:

Mol	Chain	Res	Type	RSRZ
1	A	758	THR	5.3
1	B	761	THR	5.1
1	A	757	GLU	4.5
1	A	806	PRO	4.2
1	B	730	GLY	4.2
1	B	802	ILE	4.0
1	B	31	SER	4.0
1	B	758	THR	3.9
1	B	757	GLU	3.7
1	B	86	LEU	3.6
1	B	147	SER	3.5
1	A	756	LEU	3.4
1	B	120	ALA	3.4
1	B	83	PHE	3.4
1	A	817	LEU	3.3
1	B	733	SER	3.3
1	B	45	VAL	3.2
1	B	756	LEU	3.2
1	A	80	ASN	3.1
1	B	61	VAL	3.1
1	B	128	ARG	3.1
1	B	54	LEU	3.0
1	B	82	SER	3.0
1	B	46	ILE	2.8

Continued on next page...

Continued from previous page...

Mol	Chain	Res	Type	RSRZ
1	B	762	THR	2.8
1	B	805	SER	2.8
1	A	760	THR	2.7
1	B	459	PHE	2.7
1	A	60	THR	2.7
1	B	117	THR	2.6
1	A	702	PHE	2.6
1	B	419	ASN	2.6
1	A	759	LYS	2.5
1	A	805	SER	2.5
1	A	808	ASP	2.5
1	B	89	LEU	2.5
1	B	88	ASN	2.4
1	B	77	HIS	2.3
1	A	762	THR	2.3
1	A	62	GLY	2.3
1	B	119	GLY	2.3
1	A	776	CYS	2.3
1	B	58	PRO	2.3
1	B	47	ALA	2.3
1	B	66	THR	2.3
1	B	148	LEU	2.2
1	B	434	VAL	2.2
1	B	121	PHE	2.2
1	B	113	GLY	2.2
1	A	750	THR	2.2
1	A	63	LYS	2.2
1	B	168	ARG	2.2
1	B	806	PRO	2.2
1	B	803	CYS	2.2
1	A	124	LEU	2.2
1	B	190	THR	2.2
1	A	31	SER	2.1
1	A	701	LEU	2.1
1	B	126	ASN	2.1
1	B	85	GLY	2.1
1	B	116	ILE	2.1
1	A	809	GLN	2.1
1	B	100	VAL	2.1
1	B	74	PHE	2.1
1	A	779	ASP	2.1
1	A	113	GLY	2.1

Continued on next page...

Continued from previous page...

Mol	Chain	Res	Type	RSRZ
1	A	47	ALA	2.1
1	B	79	THR	2.1
1	B	90	THR	2.1
1	B	755	ALA	2.1
1	A	100	VAL	2.0
1	B	817	LEU	2.0
1	B	65	VAL	2.0
1	B	678	PHE	2.0
1	A	780	ILE	2.0

6.2 Non-standard residues in protein, DNA, RNA chains [i](#)

There are no non-standard protein/DNA/RNA residues in this entry.

6.3 Carbohydrates [i](#)

In the following table, the Atoms column lists the number of modelled atoms in the group and the number defined in the chemical component dictionary. The B-factors column lists the minimum, median, 95th percentile and maximum values of B factors of atoms in the group. The column labelled 'Q< 0.9' lists the number of atoms with occupancy less than 0.9.

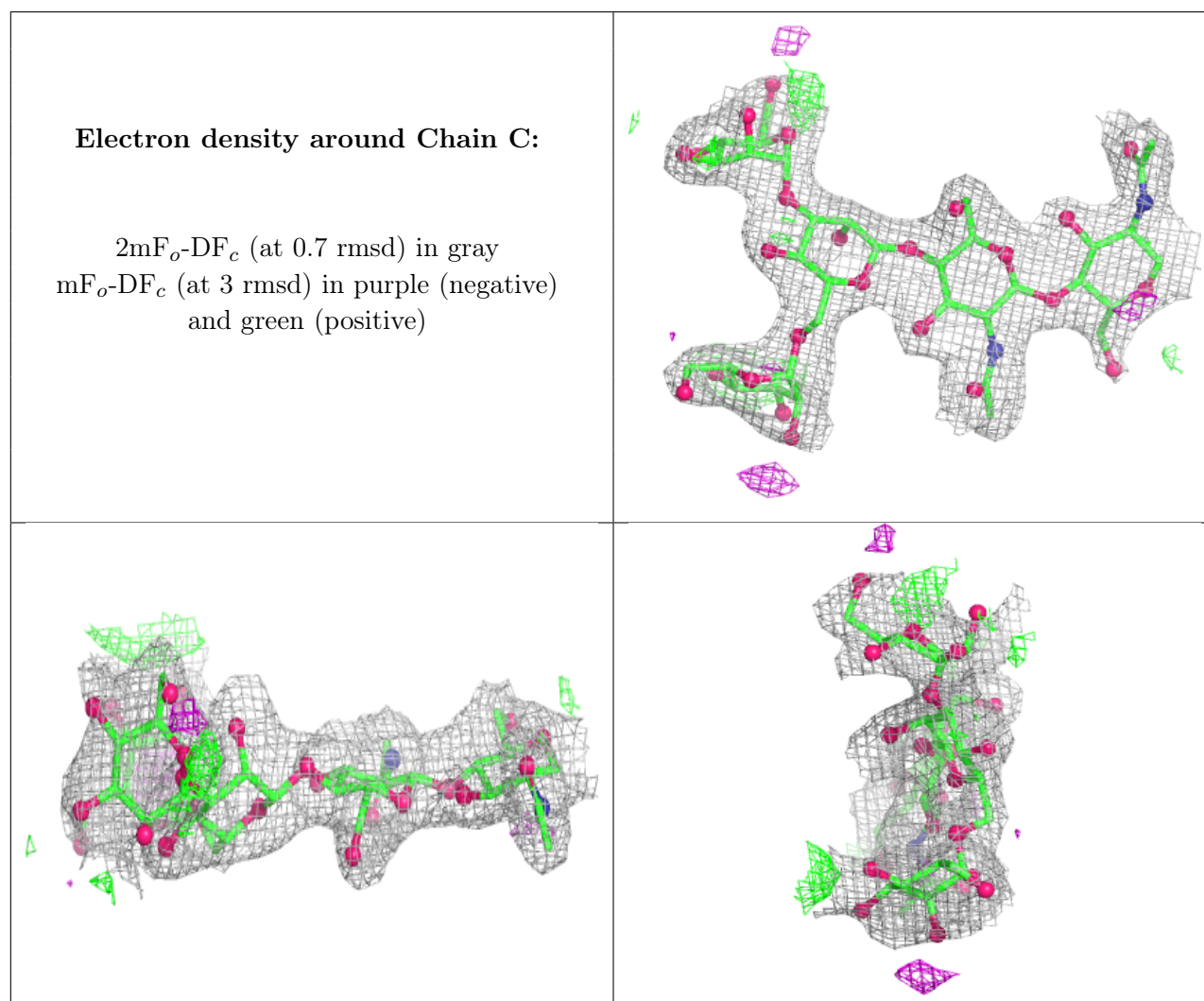
Mol	Type	Chain	Res	Atoms	RSCC	RSR	B-factors(Å ²)	Q<0.9
2	MAN	F	4	11/12	0.62	0.20	74,78,83,83	0
2	MAN	H	4	11/12	0.62	0.19	86,88,90,91	0
2	MAN	E	5	11/12	0.64	0.17	83,85,86,87	0
3	BMA	D	3	11/12	0.67	0.15	77,83,88,88	0
2	MAN	C	5	11/12	0.77	0.17	74,75,78,82	0
2	MAN	F	5	11/12	0.77	0.15	85,85,87,87	0
2	MAN	E	4	11/12	0.78	0.13	80,83,85,87	0
4	NAG	G	2	14/15	0.78	0.13	64,73,77,78	0
2	MAN	H	5	11/12	0.79	0.13	87,88,90,90	0
2	MAN	C	4	11/12	0.80	0.16	67,73,81,82	0
3	NAG	D	2	14/15	0.87	0.12	61,67,76,81	0
2	BMA	E	3	11/12	0.87	0.13	63,72,80,80	0
2	BMA	H	3	11/12	0.87	0.12	67,77,83,84	0
2	BMA	C	3	11/12	0.90	0.12	51,60,68,70	0
2	BMA	F	3	11/12	0.92	0.10	58,66,74,80	0
2	NAG	C	1	14/15	0.93	0.11	37,39,48,55	0
2	NAG	H	1	14/15	0.93	0.08	23,34,39,46	0
2	NAG	E	2	14/15	0.95	0.07	40,47,58,60	0
2	NAG	H	2	14/15	0.95	0.08	36,41,52,57	0

Continued on next page...

Continued from previous page...

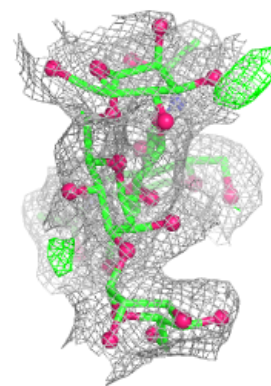
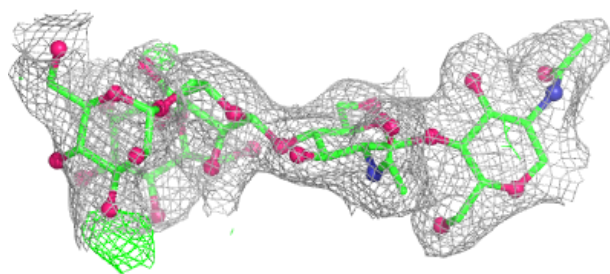
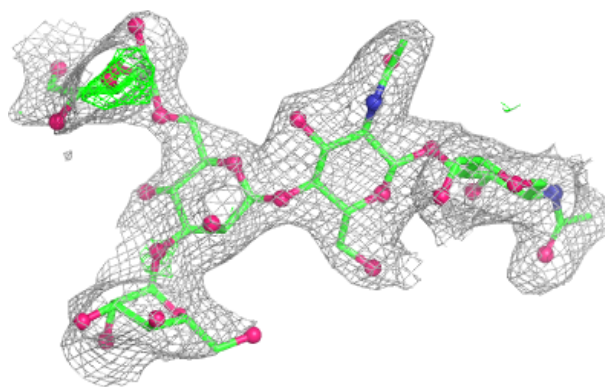
Mol	Type	Chain	Res	Atoms	RSCC	RSR	B-factors(\AA^2)	Q<0.9
2	NAG	F	1	14/15	0.95	0.07	34,40,47,47	0
2	NAG	F	2	14/15	0.95	0.08	38,47,54,56	0
2	NAG	E	1	14/15	0.96	0.06	27,37,40,43	0
2	NAG	C	2	14/15	0.96	0.07	36,40,52,56	0
4	NAG	G	1	14/15	0.97	0.07	29,35,42,53	0
3	NAG	D	1	14/15	0.97	0.05	30,32,41,51	0

The following is a graphical depiction of the model fit to experimental electron density for oligosaccharide. Each fit is shown from different orientation to approximate a three-dimensional view.

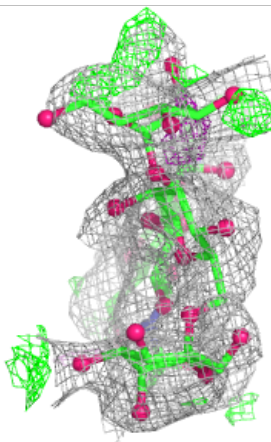
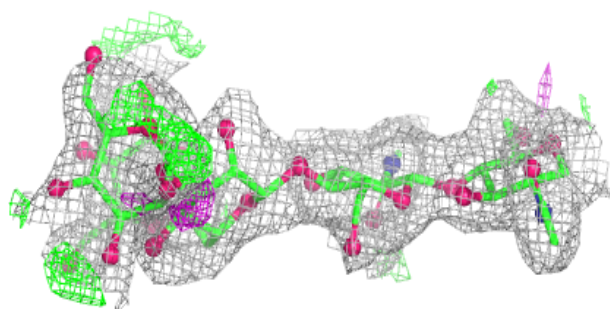
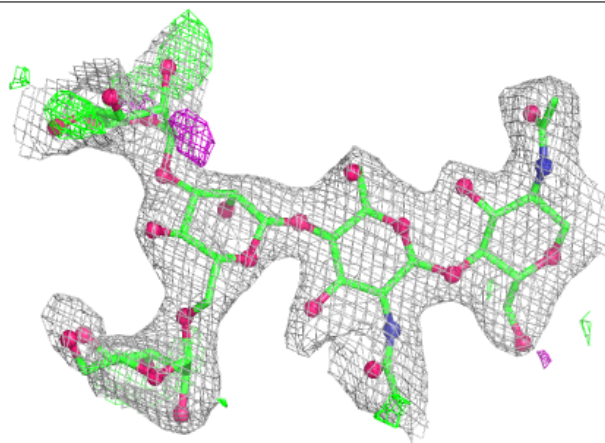


Electron density around Chain E:

$2mF_o-DF_c$ (at 0.7 rmsd) in gray
 mF_o-DF_c (at 3 rmsd) in purple (negative)
and green (positive)

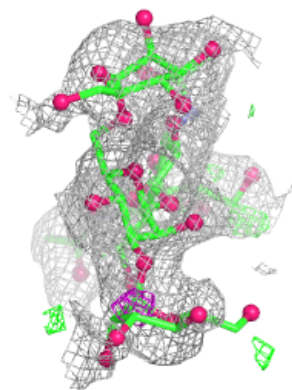
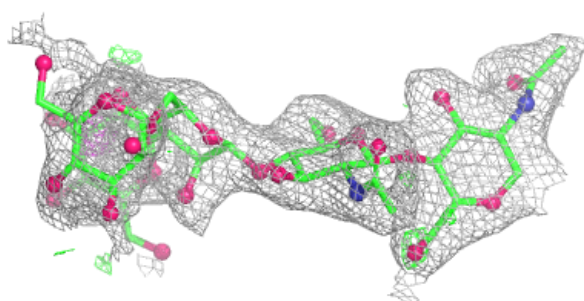
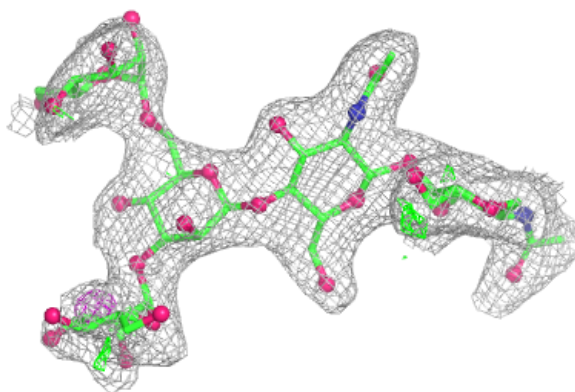
**Electron density around Chain F:**

$2mF_o-DF_c$ (at 0.7 rmsd) in gray
 mF_o-DF_c (at 3 rmsd) in purple (negative)
and green (positive)

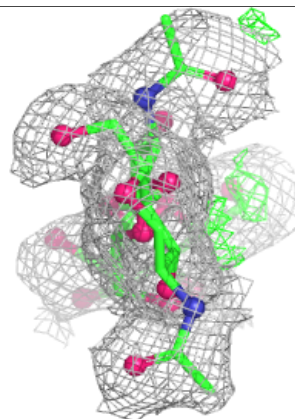
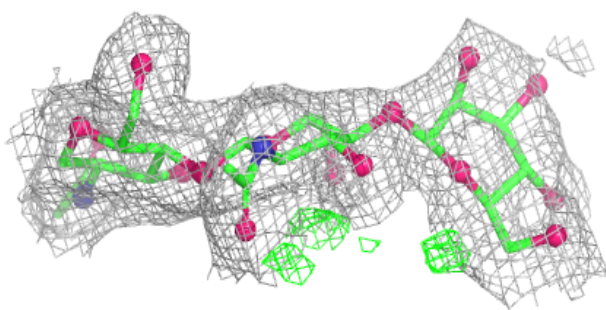
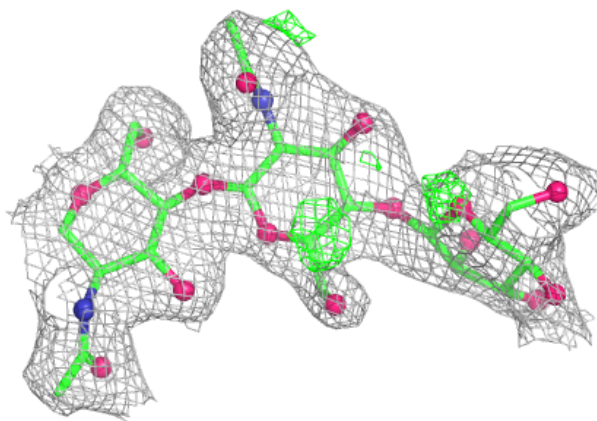


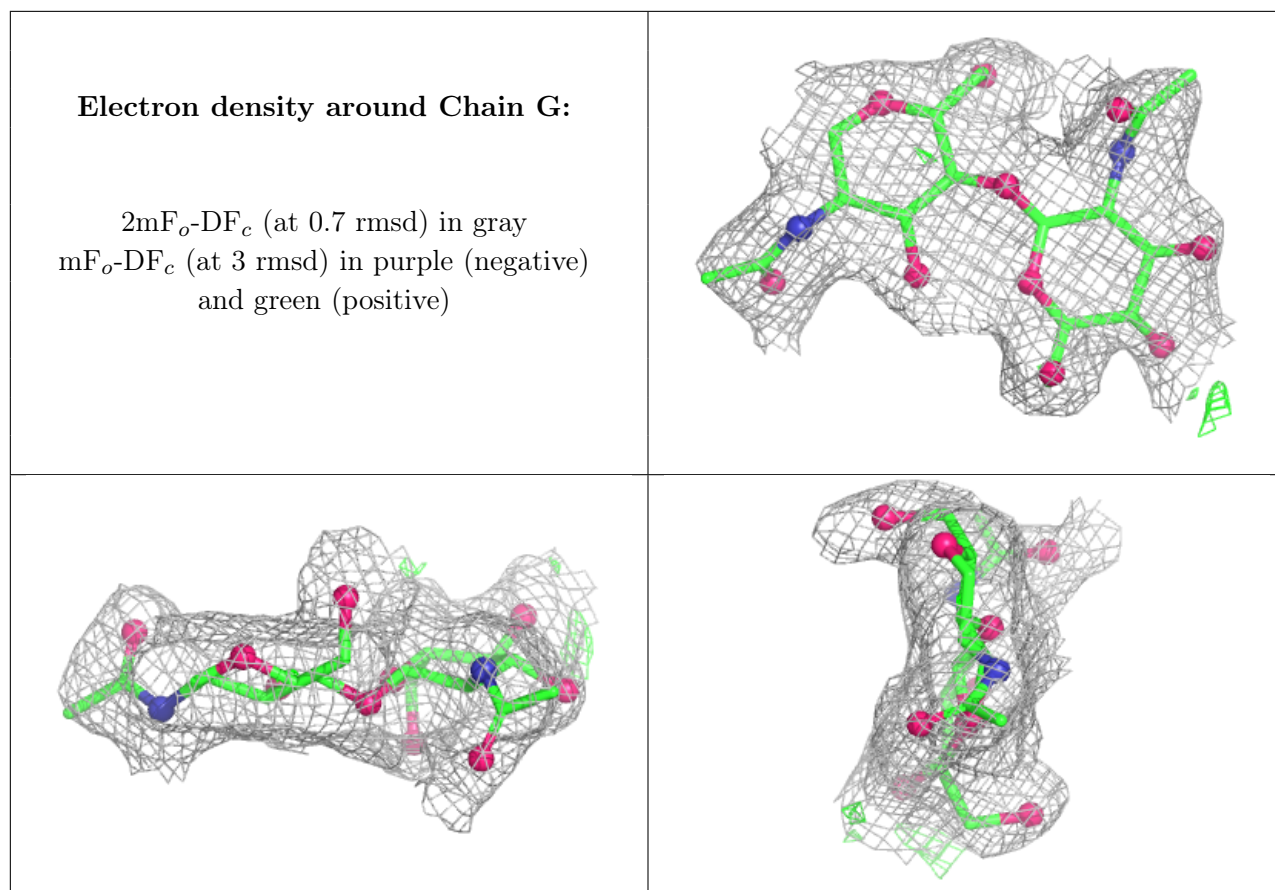
Electron density around Chain H:

$2mF_o-DF_c$ (at 0.7 rmsd) in gray
 mF_o-DF_c (at 3 rmsd) in purple (negative)
and green (positive)

**Electron density around Chain D:**

$2mF_o-DF_c$ (at 0.7 rmsd) in gray
 mF_o-DF_c (at 3 rmsd) in purple (negative)
and green (positive)





6.4 Ligands [i](#)

In the following table, the Atoms column lists the number of modelled atoms in the group and the number defined in the chemical component dictionary. The B-factors column lists the minimum, median, 95th percentile and maximum values of B factors of atoms in the group. The column labelled 'Q< 0.9' lists the number of atoms with occupancy less than 0.9.

Mol	Type	Chain	Res	Atoms	RSCC	RSR	B-factors(Å ²)	Q<0.9
6	NAG	B	909	14/15	0.76	0.14	66,74,76,76	0
6	NAG	A	917	14/15	0.86	0.12	58,66,74,79	0
6	NAG	A	910	14/15	0.87	0.10	60,67,72,74	0
6	NAG	A	916	14/15	0.87	0.12	82,88,89,94	0
6	NAG	B	915	14/15	0.91	0.11	58,63,67,69	0
6	NAG	B	916	14/15	0.94	0.08	42,56,64,66	0
5	L07	A	901	17/17	0.97	0.06	28,36,40,41	0
5	L07	B	901	17/17	0.97	0.06	27,36,38,38	0

6.5 Other polymers [i](#)

There are no such residues in this entry.