



Full wwPDB X-ray Structure Validation Report ⓘ

Nov 10, 2024 – 07:31 AM EST

PDB ID : 3VV7
Title : Crystal Structure of beta secetase in complex with 2-amino-6-((1S,2R)-2-(3'-methoxybiphenyl-3-yl)cyclopropyl)-3-methylpyrimidin-4(3H)-one
Authors : Yonezawa, S.; Yamamoto, T.; Yamakawa, H.; Muto, C.; Hosono, M.; Hattori, K.; Higashino, K.; Sakagami, M.; Togame, H.; Tanaka, Y.; Nakano, T.; Takemoto, H.; Arisawa, M.; Shuto, S.
Deposited on : 2012-07-17
Resolution : 2.10 Å(reported)

This is a Full wwPDB X-ray Structure Validation Report for a publicly released PDB entry.

We welcome your comments at validation@mail.wwpdb.org

A user guide is available at

<https://www.wwpdb.org/validation/2017/XrayValidationReportHelp>

with specific help available everywhere you see the ⓘ symbol.

The types of validation reports are described at

<http://www.wwpdb.org/validation/2017/FAQs#types>.

The following versions of software and data (see [references](#) ①) were used in the production of this report:

MolProbity : 4.02b-467
Mogul : 2022.3.0, CSD as543be (2022)
Xtrriage (Phenix) : 1.20.1
EDS : 3.0
buster-report : 1.1.7 (2018)
Percentile statistics : 20231227.v01 (using entries in the PDB archive December 27th 2023)
CCP4 : 9.0.003 (Gargrove)
Density-Fitness : 1.0.11
Ideal geometry (proteins) : Engh & Huber (2001)
Ideal geometry (DNA, RNA) : Parkinson et al. (1996)
Validation Pipeline (wwPDB-VP) : 2.39

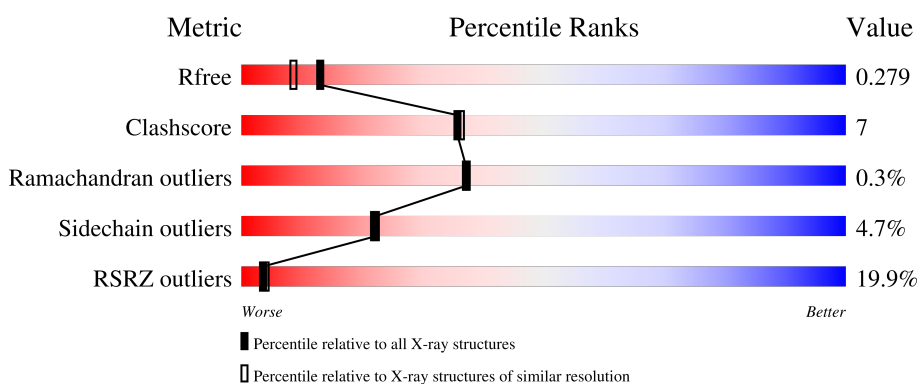
1 Overall quality at a glance

The following experimental techniques were used to determine the structure:

X-RAY DIFFRACTION

The reported resolution of this entry is 2.10 Å.

Percentile scores (ranging between 0-100) for global validation metrics of the entry are shown in the following graphic. The table shows the number of entries on which the scores are based.



Metric	Whole archive (#Entries)	Similar resolution (#Entries, resolution range(Å))
R_{free}	164625	6234 (2.10-2.10)
Clashscore	180529	6893 (2.10-2.10)
Ramachandran outliers	177936	6839 (2.10-2.10)
Sidechain outliers	177891	6840 (2.10-2.10)
RSRZ outliers	164620	6234 (2.10-2.10)

The table below summarises the geometric issues observed across the polymeric chains and their fit to the electron density. The red, orange, yellow and green segments of the lower bar indicate the fraction of residues that contain outliers for ≥ 3 , 2, 1 and 0 types of geometric quality criteria respectively. A grey segment represents the fraction of residues that are not modelled. The numeric value for each fraction is indicated below the corresponding segment, with a dot representing fractions $\leq 5\%$. The upper red bar (where present) indicates the fraction of residues that have poor fit to the electron density. The numeric value is given above the bar.

Mol	Chain	Length	Quality of chain
1	A	416	

The following table lists non-polymeric compounds, carbohydrate monomers and non-standard residues in protein, DNA, RNA chains that are outliers for geometric or electron-density-fit criteria:

Mol	Type	Chain	Res	Chirality	Geometry	Clashes	Electron density
3	GOL	A	508	-	-	X	-

2 Entry composition

There are 5 unique types of molecules in this entry. The entry contains 3065 atoms, of which 0 are hydrogens and 0 are deuteriums.

In the tables below, the ZeroOcc column contains the number of atoms modelled with zero occupancy, the AltConf column contains the number of residues with at least one atom in alternate conformation and the Trace column contains the number of residues modelled with at most 2 atoms.

- Molecule 1 is a protein called Beta-secretase 1.

Mol	Chain	Residues	Atoms					ZeroOcc	AltConf	Trace
			Total	C	N	O	S			
1	A	361	2809	1803	462	530	14	0	0	0

There are 4 discrepancies between the modelled and reference sequences:

Chain	Residue	Modelled	Actual	Comment	Reference
A	-22	GLY	-	expression tag	UNP P56817
A	-21	SER	-	expression tag	UNP P56817
A	-20	HIS	-	expression tag	UNP P56817
A	-19	MET	-	expression tag	UNP P56817

- Molecule 2 is IODIDE ION (three-letter code: IOD) (formula: I).

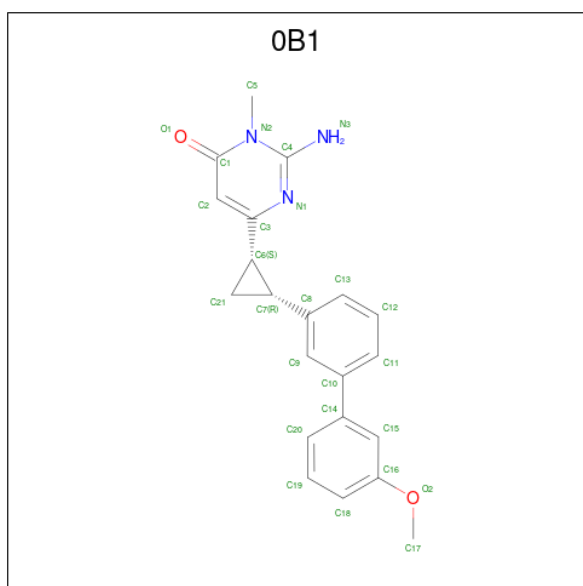
Mol	Chain	Residues	Atoms		ZeroOcc	AltConf
2	A	6	Total	I	0	0
			6	6		

- Molecule 3 is GLYCEROL (three-letter code: GOL) (formula: C₃H₈O₃).



Mol	Chain	Residues	Atoms			ZeroOcc	AltConf
3	A	1	Total	C	O	0	0
			6	3	3		
3	A	1	Total	C	O	0	0
			6	3	3		

- Molecule 4 is 2-amino-6-[(1S,2R)-2-(3'-methoxybiphenyl-3-yl)cyclopropyl]-3-methylpyrimidin-4(3H)-one (three-letter code: 0B1) (formula: C₂₁H₂₁N₃O₂).



Mol	Chain	Residues	Atoms				ZeroOcc	AltConf
4	A	1	Total	C	N	O	0	0
			26	21	3	2		

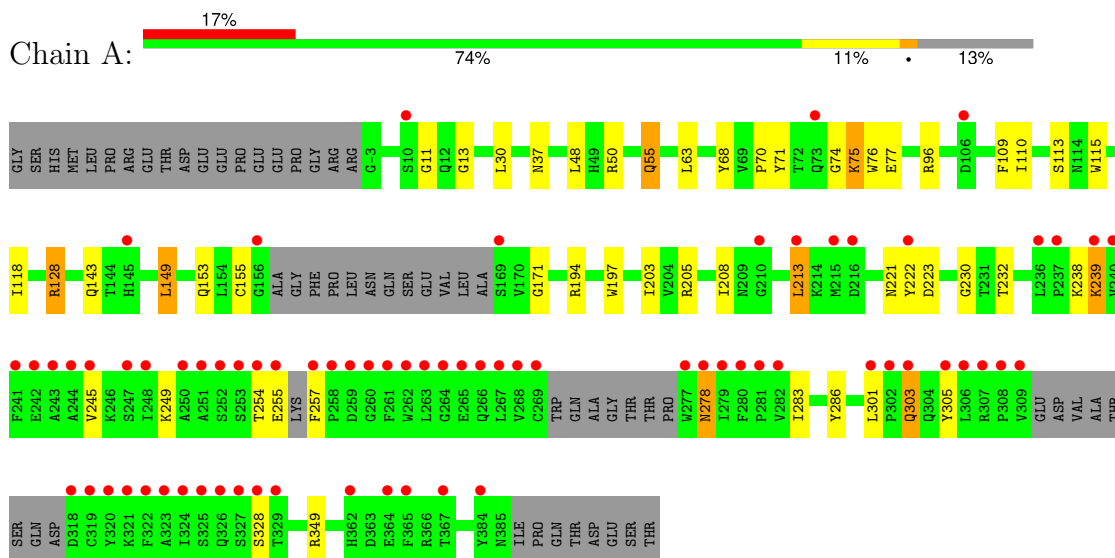
- Molecule 5 is water.

Mol	Chain	Residues	Atoms		ZeroOcc	AltConf
5	A	212	Total 212	O 212	0	0

3 Residue-property plots [i](#)

These plots are drawn for all protein, RNA, DNA and oligosaccharide chains in the entry. The first graphic for a chain summarises the proportions of the various outlier classes displayed in the second graphic. The second graphic shows the sequence view annotated by issues in geometry and electron density. Residues are color-coded according to the number of geometric quality criteria for which they contain at least one outlier: green = 0, yellow = 1, orange = 2 and red = 3 or more. A red dot above a residue indicates a poor fit to the electron density ($RSRZ > 2$). Stretches of 2 or more consecutive residues without any outlier are shown as a green connector. Residues present in the sample, but not in the model, are shown in grey.

- Molecule 1: Beta-secretase 1



4 Data and refinement statistics

Property	Value	Source
Space group	P 61 2 2	Depositor
Cell constants a, b, c, α , β , γ	103.68Å 103.68Å 169.01Å 90.00° 90.00° 120.00°	Depositor
Resolution (Å)	20.00 – 2.10 20.00 – 2.10	Depositor EDS
% Data completeness (in resolution range)	98.3 (20.00-2.10) 98.1 (20.00-2.10)	Depositor EDS
R_{merge}	0.08	Depositor
R_{sym}	(Not available)	Depositor
$\langle I/\sigma(I) \rangle$ ¹	5.00 (at 2.10Å)	Xtrriage
Refinement program	REFMAC	Depositor
R, R_{free}	0.242 , 0.280 0.243 , 0.279	Depositor DCC
R_{free} test set	1592 reflections (5.06%)	wwPDB-VP
Wilson B-factor (Å ²)	29.5	Xtrriage
Anisotropy	0.110	Xtrriage
Bulk solvent k_{sol} (e/Å ³), B_{sol} (Å ²)	0.34 , 43.9	EDS
L-test for twinning ²	$\langle L \rangle = 0.50$, $\langle L^2 \rangle = 0.33$	Xtrriage
Estimated twinning fraction	No twinning to report.	Xtrriage
F_o, F_c correlation	0.92	EDS
Total number of atoms	3065	wwPDB-VP
Average B, all atoms (Å ²)	34.0	wwPDB-VP

Xtrriage's analysis on translational NCS is as follows: *The largest off-origin peak in the Patterson function is 2.90% of the height of the origin peak. No significant pseudotranslation is detected.*

¹Intensities estimated from amplitudes.

²Theoretical values of $\langle |L| \rangle$, $\langle L^2 \rangle$ for acentric reflections are 0.5, 0.333 respectively for untwinned datasets, and 0.375, 0.2 for perfectly twinned datasets.

5 Model quality [i](#)

5.1 Standard geometry [i](#)

Bond lengths and bond angles in the following residue types are not validated in this section: 0B1, IOD, GOL

The Z score for a bond length (or angle) is the number of standard deviations the observed value is removed from the expected value. A bond length (or angle) with $|Z| > 5$ is considered an outlier worth inspection. RMSZ is the root-mean-square of all Z scores of the bond lengths (or angles).

Mol	Chain	Bond lengths		Bond angles	
		RMSZ	# $ Z > 5$	RMSZ	# $ Z > 5$
1	A	0.63	3/2878 (0.1%)	0.64	1/3910 (0.0%)

All (3) bond length outliers are listed below:

Mol	Chain	Res	Type	Atoms	Z	Observed(Å)	Ideal(Å)
1	A	257	PHE	N-CA	5.63	1.57	1.46
1	A	255	GLU	CD-OE1	5.32	1.31	1.25
1	A	71	TYR	CD2-CE2	-5.13	1.31	1.39

All (1) bond angle outliers are listed below:

Mol	Chain	Res	Type	Atoms	Z	Observed(°)	Ideal(°)
1	A	149	LEU	CA-CB-CG	5.73	128.47	115.30

There are no chirality outliers.

There are no planarity outliers.

5.2 Too-close contacts [i](#)

In the following table, the Non-H and H(model) columns list the number of non-hydrogen atoms and hydrogen atoms in the chain respectively. The H(added) column lists the number of hydrogen atoms added and optimized by MolProbity. The Clashes column lists the number of clashes within the asymmetric unit, whereas Symm-Clashes lists symmetry-related clashes.

Mol	Chain	Non-H	H(model)	H(added)	Clashes	Symm-Clashes
1	A	2809	0	2677	38	0
2	A	6	0	0	2	0
3	A	12	0	13	7	0
4	A	26	0	21	3	0

Continued on next page...

Continued from previous page...

Mol	Chain	Non-H	H(model)	H(added)	Clashes	Symm-Clashes
5	A	212	0	0	5	0
All	All	3065	0	2711	40	0

The all-atom clashscore is defined as the number of clashes found per 1000 atoms (including hydrogen atoms). The all-atom clashscore for this structure is 7.

All (40) close contacts within the same asymmetric unit are listed below, sorted by their clash magnitude.

Atom-1	Atom-2	Interatomic distance (Å)	Clash overlap (Å)
2:A:503:IOD:I	5:A:1001:HOH:O	2.20	1.30
1:A:37:ASN:HD21	1:A:128:ARG:H	1.20	0.89
1:A:203:ILE:H	1:A:221:ASN:HD21	1.27	0.80
1:A:96:ARG:H	1:A:143:GLN:HE22	1.29	0.77
1:A:238:LYS:CB	2:A:506:IOD:I	3.05	0.75
1:A:30:LEU:HD11	1:A:115:TRP:CE2	2.26	0.71
1:A:68:TYR:CD2	1:A:70:PRO:HD3	2.26	0.71
1:A:55:GLN:HE21	1:A:55:GLN:H	1.38	0.70
1:A:283:ILE:CD1	1:A:305:TYR:CE2	2.80	0.64
1:A:13:GLY:H	3:A:508:GOL:H12	1.63	0.63
1:A:232:THR:HG23	3:A:508:GOL:H32	1.83	0.61
1:A:68:TYR:CE2	1:A:70:PRO:HD3	2.37	0.60
1:A:13:GLY:H	3:A:508:GOL:C1	2.15	0.58
1:A:203:ILE:H	1:A:221:ASN:ND2	2.00	0.56
1:A:283:ILE:HD13	1:A:305:TYR:CE2	2.42	0.55
1:A:118:ILE:HD12	4:A:509:0B1:C9	2.38	0.53
1:A:155:CYS:HB2	1:A:171:GLY:O	2.09	0.53
3:A:507:GOL:H32	5:A:1189:HOH:O	2.08	0.53
1:A:110:ILE:HB	1:A:113:SER:HB3	1.91	0.52
1:A:11:GLY:CA	3:A:508:GOL:H31	2.40	0.51
1:A:194:ARG:NH1	5:A:1135:HOH:O	2.44	0.51
1:A:75:LYS:HG2	1:A:76:TRP:N	2.27	0.46
1:A:278:ASN:HD22	1:A:278:ASN:N	2.15	0.45
1:A:50:ARG:HA	3:A:507:GOL:H31	1.99	0.44
1:A:230:GLY:HA2	4:A:509:0B1:C18	2.48	0.44
1:A:153:GLN:NE2	5:A:1106:HOH:O	2.51	0.43
1:A:208:ILE:HG12	1:A:213:LEU:HD21	1.99	0.43
1:A:245:VAL:O	1:A:249:LYS:HB2	2.17	0.43
1:A:239:LYS:HZ3	1:A:239:LYS:HG2	1.66	0.43
1:A:118:ILE:CD1	4:A:509:0B1:H17	2.49	0.43
1:A:11:GLY:C	3:A:508:GOL:H31	2.39	0.43
1:A:30:LEU:HD11	1:A:115:TRP:CD2	2.55	0.42

Continued on next page...

Continued from previous page...

Atom-1	Atom-2	Interatomic distance (Å)	Clash overlap (Å)
1:A:205:ARG:HB3	1:A:286:TYR:HB2	2.00	0.41
1:A:222:TYR:HA	1:A:223:ASP:HA	1.58	0.41
1:A:110:ILE:HD11	5:A:1079:HOH:O	2.19	0.41
1:A:283:ILE:HD13	1:A:305:TYR:CD2	2.55	0.40
1:A:30:LEU:HD11	1:A:115:TRP:CZ2	2.57	0.40
1:A:213:LEU:HD22	1:A:213:LEU:HA	1.90	0.40
1:A:48:LEU:HD21	1:A:109:PHE:CD1	2.57	0.40
1:A:301:LEU:HB2	1:A:303:GLN:HG2	2.03	0.40

There are no symmetry-related clashes.

5.3 Torsion angles [i](#)

5.3.1 Protein backbone [i](#)

In the following table, the Percentiles column shows the percent Ramachandran outliers of the chain as a percentile score with respect to all X-ray entries followed by that with respect to entries of similar resolution.

The Analysed column shows the number of residues for which the backbone conformation was analysed, and the total number of residues.

Mol	Chain	Analysed	Favoured	Allowed	Outliers	Percentiles
1	A	351/416 (84%)	342 (97%)	8 (2%)	1 (0%)	37 37

All (1) Ramachandran outliers are listed below:

Mol	Chain	Res	Type
1	A	74	GLY

5.3.2 Protein sidechains [i](#)

In the following table, the Percentiles column shows the percent sidechain outliers of the chain as a percentile score with respect to all X-ray entries followed by that with respect to entries of similar resolution.

The Analysed column shows the number of residues for which the sidechain conformation was analysed, and the total number of residues.

Mol	Chain	Analysed	Rotameric	Outliers	Percentiles
1	A	298/356 (84%)	284 (95%)	14 (5%)	22 22

All (14) residues with a non-rotameric sidechain are listed below:

Mol	Chain	Res	Type
1	A	55	GLN
1	A	63	LEU
1	A	75	LYS
1	A	77	GLU
1	A	128	ARG
1	A	149	LEU
1	A	197	TRP
1	A	213	LEU
1	A	239	LYS
1	A	254	THR
1	A	278	ASN
1	A	303	GLN
1	A	328	SER
1	A	349	ARG

Sometimes sidechains can be flipped to improve hydrogen bonding and reduce clashes. All (7) such sidechains are listed below:

Mol	Chain	Res	Type
1	A	12	GLN
1	A	37	ASN
1	A	55	GLN
1	A	143	GLN
1	A	153	GLN
1	A	221	ASN
1	A	278	ASN

5.3.3 RNA [i](#)

There are no RNA molecules in this entry.

5.4 Non-standard residues in protein, DNA, RNA chains [i](#)

There are no non-standard protein/DNA/RNA residues in this entry.

5.5 Carbohydrates [i](#)

There are no oligosaccharides in this entry.

5.6 Ligand geometry [i](#)

Of 9 ligands modelled in this entry, 6 are monoatomic - leaving 3 for Mogul analysis.

In the following table, the Counts columns list the number of bonds (or angles) for which Mogul statistics could be retrieved, the number of bonds (or angles) that are observed in the model and the number of bonds (or angles) that are defined in the Chemical Component Dictionary. The Link column lists molecule types, if any, to which the group is linked. The Z score for a bond length (or angle) is the number of standard deviations the observed value is removed from the expected value. A bond length (or angle) with $|Z| > 2$ is considered an outlier worth inspection. RMSZ is the root-mean-square of all Z scores of the bond lengths (or angles).

Mol	Type	Chain	Res	Link	Bond lengths			Bond angles		
					Counts	RMSZ	# $ Z > 2$	Counts	RMSZ	# $ Z > 2$
3	GOL	A	507	-	5,5,5	1.15	0	5,5,5	1.01	0
4	0B1	A	509	-	28,29,29	1.34	4 (14%)	37,42,42	2.12	7 (18%)
3	GOL	A	508	-	5,5,5	1.18	0	5,5,5	1.44	1 (20%)

In the following table, the Chirals column lists the number of chiral outliers, the number of chiral centers analysed, the number of these observed in the model and the number defined in the Chemical Component Dictionary. Similar counts are reported in the Torsion and Rings columns. '-' means no outliers of that kind were identified.

Mol	Type	Chain	Res	Link	Chirals	Torsions	Rings
3	GOL	A	507	-	-	2/4/4/4	-
4	0B1	A	509	-	-	0/10/19/19	0/4/4/4
3	GOL	A	508	-	-	4/4/4/4	-

All (4) bond length outliers are listed below:

Mol	Chain	Res	Type	Atoms	Z	Observed(Å)	Ideal(Å)
4	A	509	0B1	C2-C3	3.30	1.41	1.36
4	A	509	0B1	C4-N2	3.25	1.43	1.37
4	A	509	0B1	C4-N1	2.79	1.38	1.33
4	A	509	0B1	C4-N3	2.07	1.37	1.34

All (8) bond angle outliers are listed below:

Mol	Chain	Res	Type	Atoms	Z	Observed(°)	Ideal(°)
4	A	509	0B1	C21-C6-C3	-7.26	110.73	119.64
4	A	509	0B1	C6-C3-C2	-5.55	119.21	125.42
4	A	509	0B1	C2-C1-N2	4.48	119.57	115.36
4	A	509	0B1	C21-C7-C8	-4.39	114.05	122.27
4	A	509	0B1	C2-C3-N1	-3.35	119.83	125.07
3	A	508	GOL	C3-C2-C1	-2.68	101.98	111.80
4	A	509	0B1	C17-O2-C16	2.52	122.90	117.50
4	A	509	0B1	C4-N2-C1	-2.05	119.06	121.07

There are no chirality outliers.

All (6) torsion outliers are listed below:

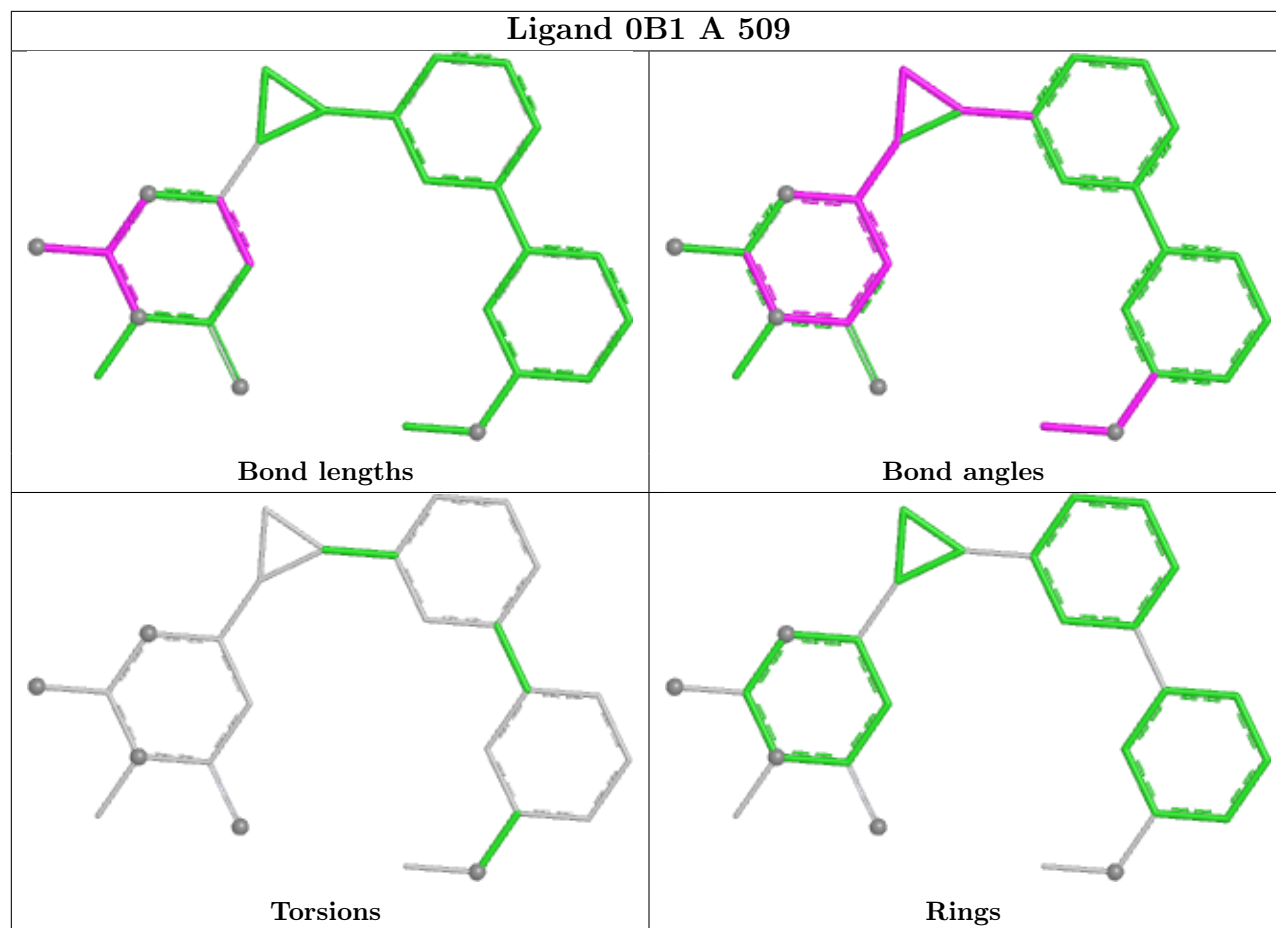
Mol	Chain	Res	Type	Atoms
3	A	507	GOL	C1-C2-C3-O3
3	A	508	GOL	O1-C1-C2-C3
3	A	507	GOL	O2-C2-C3-O3
3	A	508	GOL	C1-C2-C3-O3
3	A	508	GOL	O2-C2-C3-O3
3	A	508	GOL	O1-C1-C2-O2

There are no ring outliers.

3 monomers are involved in 10 short contacts:

Mol	Chain	Res	Type	Clashes	Symm-Clashes
3	A	507	GOL	2	0
4	A	509	0B1	3	0
3	A	508	GOL	5	0

The following is a two-dimensional graphical depiction of Mogul quality analysis of bond lengths, bond angles, torsion angles, and ring geometry for all instances of the Ligand of Interest. In addition, ligands with molecular weight > 250 and outliers as shown on the validation Tables will also be included. For torsion angles, if less than 5% of the Mogul distribution of torsion angles is within 10 degrees of the torsion angle in question, then that torsion angle is considered an outlier. Any bond that is central to one or more torsion angles identified as an outlier by Mogul will be highlighted in the graph. For rings, the root-mean-square deviation (RMSD) between the ring in question and similar rings identified by Mogul is calculated over all ring torsion angles. If the average RMSD is greater than 60 degrees and the minimal RMSD between the ring in question and any Mogul-identified rings is also greater than 60 degrees, then that ring is considered an outlier. The outliers are highlighted in purple. The color gray indicates Mogul did not find sufficient equivalents in the CSD to analyse the geometry.



5.7 Other polymers [i](#)

There are no such residues in this entry.

5.8 Polymer linkage issues [i](#)

There are no chain breaks in this entry.

6 Fit of model and data

6.1 Protein, DNA and RNA chains

In the following table, the column labelled ‘#RSRZ> 2’ contains the number (and percentage) of RSRZ outliers, followed by percent RSRZ outliers for the chain as percentile scores relative to all X-ray entries and entries of similar resolution. The OWAB column contains the minimum, median, 95th percentile and maximum values of the occupancy-weighted average B-factor per residue. The column labelled ‘Q< 0.9’ lists the number of (and percentage) of residues with an average occupancy less than 0.9.

Mol	Chain	Analysed	<RSRZ>	#RSRZ>2	OWAB(Å ²)	Q<0.9
1	A	361/416 (86%)	0.75	72 (19%) 3 4	16, 30, 62, 71	0

All (72) RSRZ outliers are listed below:

Mol	Chain	Res	Type	RSRZ
1	A	319	CYS	8.6
1	A	277	TRP	6.8
1	A	365	PHE	6.6
1	A	264	GLY	6.0
1	A	269	CYS	6.0
1	A	257	PHE	5.5
1	A	280	PHE	5.1
1	A	279	ILE	4.7
1	A	320	TYR	4.3
1	A	278	ASN	4.0
1	A	156	GLY	3.9
1	A	367	THR	3.9
1	A	260	GLY	3.9
1	A	248	ILE	3.9
1	A	326	GLN	3.9
1	A	262	TRP	3.8
1	A	263	LEU	3.8
1	A	267	LEU	3.7
1	A	241	PHE	3.6
1	A	213	LEU	3.5
1	A	322	PHE	3.5
1	A	251	ALA	3.4
1	A	305	TYR	3.4
1	A	261	PHE	3.4
1	A	306	LEU	3.4
1	A	362	HIS	3.4
1	A	243	ALA	3.4

Continued on next page...

Continued from previous page...

Mol	Chain	Res	Type	RSRZ
1	A	265	GLU	3.4
1	A	282	VAL	3.3
1	A	323	ALA	3.3
1	A	254	THR	3.2
1	A	318	ASP	3.2
1	A	329	THR	3.1
1	A	309	VAL	3.1
1	A	302	PRO	3.1
1	A	244	ALA	3.0
1	A	259	ASP	3.0
1	A	222	TYR	2.9
1	A	245	VAL	2.9
1	A	73	GLN	2.9
1	A	308	PRO	2.9
1	A	258	PRO	2.9
1	A	106	ASP	2.8
1	A	169	SER	2.8
1	A	324	ILE	2.8
1	A	268	VAL	2.8
1	A	250	ALA	2.7
1	A	210	GLY	2.7
1	A	325	SER	2.7
1	A	384	TYR	2.7
1	A	328	SER	2.6
1	A	242	GLU	2.6
1	A	321	LYS	2.5
1	A	301	LEU	2.5
1	A	253	SER	2.5
1	A	215	MET	2.4
1	A	303	GLN	2.4
1	A	252	SER	2.4
1	A	327	SER	2.4
1	A	216	ASP	2.4
1	A	240	VAL	2.3
1	A	239	LYS	2.3
1	A	364	GLU	2.3
1	A	281	PRO	2.2
1	A	247	SER	2.2
1	A	236	LEU	2.2
1	A	255	GLU	2.1
1	A	307	ARG	2.1
1	A	266	GLN	2.1

Continued on next page...

Continued from previous page...

Mol	Chain	Res	Type	RSRZ
1	A	10	SER	2.1
1	A	237	PRO	2.0
1	A	145	HIS	2.0

6.2 Non-standard residues in protein, DNA, RNA chains [i](#)

There are no non-standard protein/DNA/RNA residues in this entry.

6.3 Carbohydrates [i](#)

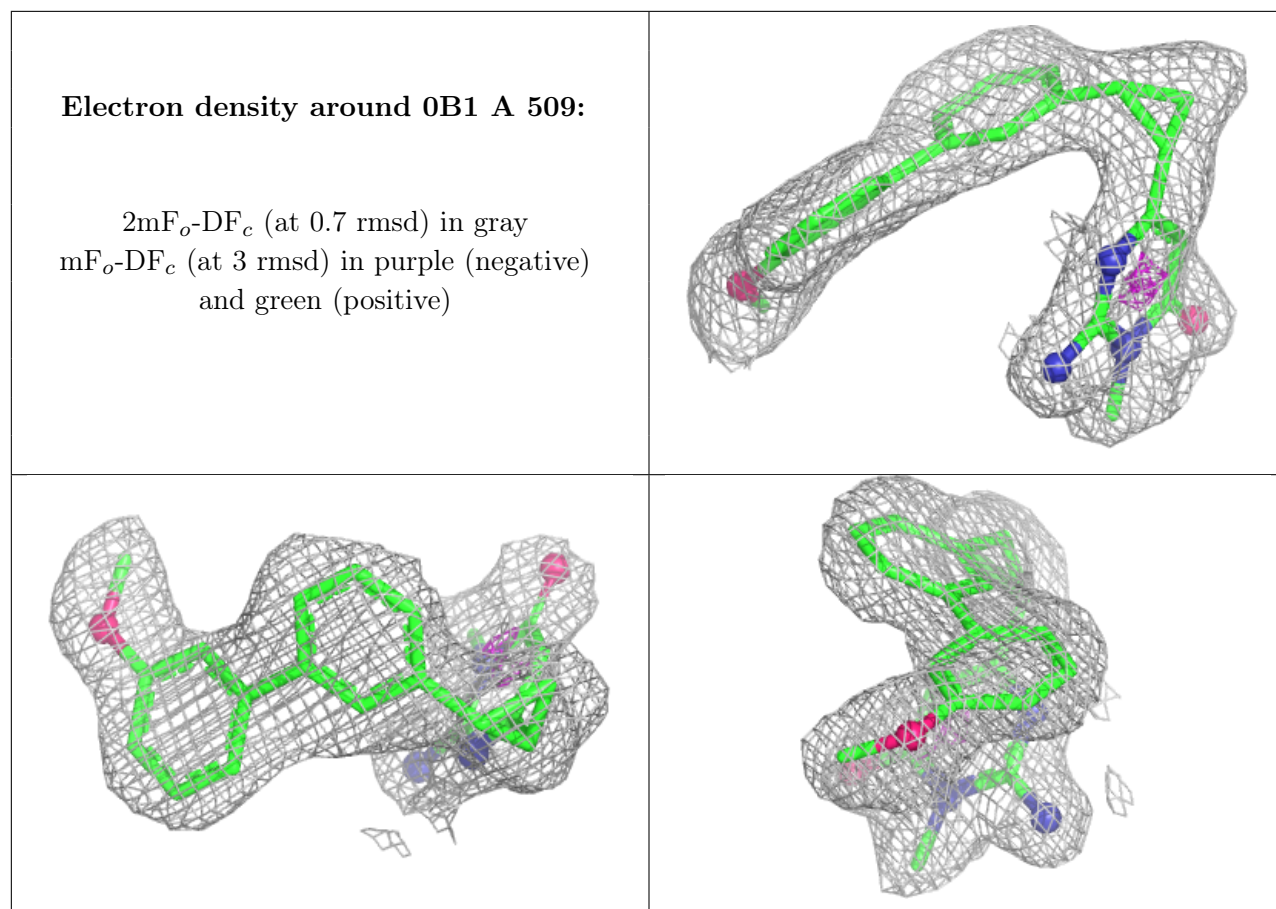
There are no monosaccharides in this entry.

6.4 Ligands [i](#)

In the following table, the Atoms column lists the number of modelled atoms in the group and the number defined in the chemical component dictionary. The B-factors column lists the minimum, median, 95th percentile and maximum values of B factors of atoms in the group. The column labelled 'Q< 0.9' lists the number of atoms with occupancy less than 0.9.

Mol	Type	Chain	Res	Atoms	RSCC	RSR	B-factors(Å ²)	Q<0.9
3	GOL	A	507	6/6	0.82	0.18	38,42,45,45	0
4	OB1	A	509	26/26	0.84	0.12	25,35,38,39	0
2	IOD	A	506	1/1	0.85	0.34	75,75,75,75	0
2	IOD	A	503	1/1	0.89	0.19	79,79,79,79	0
2	IOD	A	504	1/1	0.90	0.43	101,101,101,101	0
3	GOL	A	508	6/6	0.91	0.17	42,45,47,47	0
2	IOD	A	505	1/1	0.93	0.17	110,110,110,110	0
2	IOD	A	502	1/1	0.96	0.09	54,54,54,54	0
2	IOD	A	501	1/1	0.99	0.02	28,28,28,28	0

The following is a graphical depiction of the model fit to experimental electron density of all instances of the Ligand of Interest. In addition, ligands with molecular weight > 250 and outliers as shown on the geometry validation Tables will also be included. Each fit is shown from different orientation to approximate a three-dimensional view.



6.5 Other polymers [i](#)

There are no such residues in this entry.