



Full wwPDB X-ray Structure Validation Report ⓘ

Sep 5, 2023 – 12:56 PM EDT

PDB ID : 3UZ5
Title : Designed protein KE59 R13 3/11H
Authors : Khersonsky, O.; Kiss, G.; Roethlisberger, D.; Dym, O.; Albeck, S.; Houk, K.N.; Baker, D.; Tawfik, D.S.; Israel Structural Proteomics Center (ISPC)
Deposited on : 2011-12-07
Resolution : 1.90 Å(reported)

This is a Full wwPDB X-ray Structure Validation Report for a publicly released PDB entry.

We welcome your comments at validation@mail.wwpdb.org

A user guide is available at

<https://www.wwpdb.org/validation/2017/XrayValidationReportHelp>

with specific help available everywhere you see the ⓘ symbol.

The types of validation reports are described at

<http://www.wwpdb.org/validation/2017/FAQs#types>.

The following versions of software and data (see [references ⓘ](#)) were used in the production of this report:

MolProbity : 4.02b-467
Mogul : 1.8.5 (274361), CSD as541be (2020)
Xtriage (Phenix) : 1.13
EDS : 2.35
Percentile statistics : 20191225.v01 (using entries in the PDB archive December 25th 2019)
Refmac : 5.8.0158
CCP4 : 7.0.044 (Gargrove)
Ideal geometry (proteins) : Engh & Huber (2001)
Ideal geometry (DNA, RNA) : Parkinson et al. (1996)
Validation Pipeline (wwPDB-VP) : 2.35

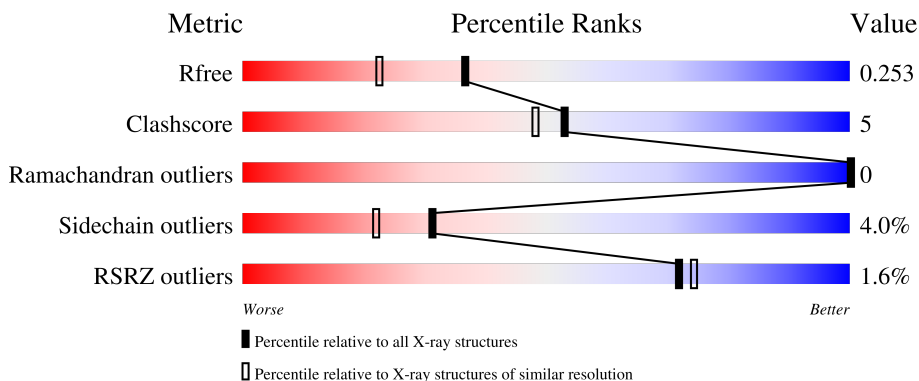
1 Overall quality at a glance

The following experimental techniques were used to determine the structure:

X-RAY DIFFRACTION

The reported resolution of this entry is 1.90 Å.

Percentile scores (ranging between 0-100) for global validation metrics of the entry are shown in the following graphic. The table shows the number of entries on which the scores are based.



Metric	Whole archive (#Entries)	Similar resolution (#Entries, resolution range(Å))
R_{free}	130704	6207 (1.90-1.90)
Clashscore	141614	6847 (1.90-1.90)
Ramachandran outliers	138981	6760 (1.90-1.90)
Sidechain outliers	138945	6760 (1.90-1.90)
RSRZ outliers	127900	6082 (1.90-1.90)

The table below summarises the geometric issues observed across the polymeric chains and their fit to the electron density. The red, orange, yellow and green segments of the lower bar indicate the fraction of residues that contain outliers for ≥ 3 , 2, 1 and 0 types of geometric quality criteria respectively. A grey segment represents the fraction of residues that are not modelled. The numeric value for each fraction is indicated below the corresponding segment, with a dot representing fractions $\leq 5\%$. The upper red bar (where present) indicates the fraction of residues that have poor fit to the electron density. The numeric value is given above the bar.

Mol	Chain	Length	Quality of chain
1	A	252	
1	B	252	

The following table lists non-polymeric compounds, carbohydrate monomers and non-standard residues in protein, DNA, RNA chains that are outliers for geometric or electron-density-fit criteria:

Mol	Type	Chain	Res	Chirality	Geometry	Clashes	Electron density
3	PO4	A	253	-	-	X	-
3	PO4	A	296	-	X	-	-

2 Entry composition [i](#)

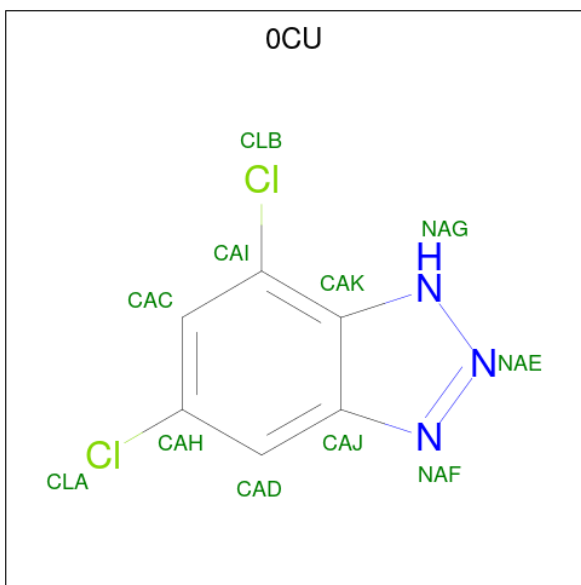
There are 5 unique types of molecules in this entry. The entry contains 4013 atoms, of which 0 are hydrogens and 0 are deuteriums.

In the tables below, the ZeroOcc column contains the number of atoms modelled with zero occupancy, the AltConf column contains the number of residues with at least one atom in alternate conformation and the Trace column contains the number of residues modelled with at most 2 atoms.

- Molecule 1 is a protein called Kemp eliminase KE59 R13 3/11H.

Mol	Chain	Residues	Atoms					ZeroOcc	AltConf	Trace
			Total	C	N	O	S			
1	A	247	Total 1919	C 1232	N 329	O 352	S 6	0	0	0
1	B	247	Total 1940	C 1242	N 330	O 362	S 6	0	1	0

- Molecule 2 is 5,7-dichloro-1H-benzotriazole (three-letter code: 0CU) (formula: C₆H₃Cl₂N₃).



Mol	Chain	Residues	Atoms				ZeroOcc	AltConf
			Total	C	Cl	N		
2	A	1	Total 11	C 6	Cl 2	N 3	0	0
2	B	1	Total 11	C 6	Cl 2	N 3	0	0

- Molecule 3 is PHOSPHATE ION (three-letter code: PO4) (formula: O₄P).



Mol	Chain	Residues	Atoms	ZeroOcc	AltConf
3	A	1	Total O P 5 4 1	0	0
3	A	1	Total O P 5 4 1	0	0
3	B	1	Total O P 5 4 1	0	0
3	B	1	Total O P 5 4 1	0	0

- Molecule 4 is SODIUM ION (three-letter code: NA) (formula: Na).

Mol	Chain	Residues	Atoms	ZeroOcc	AltConf
4	A	1	Total Na 1 1	0	0
4	B	1	Total Na 1 1	0	0

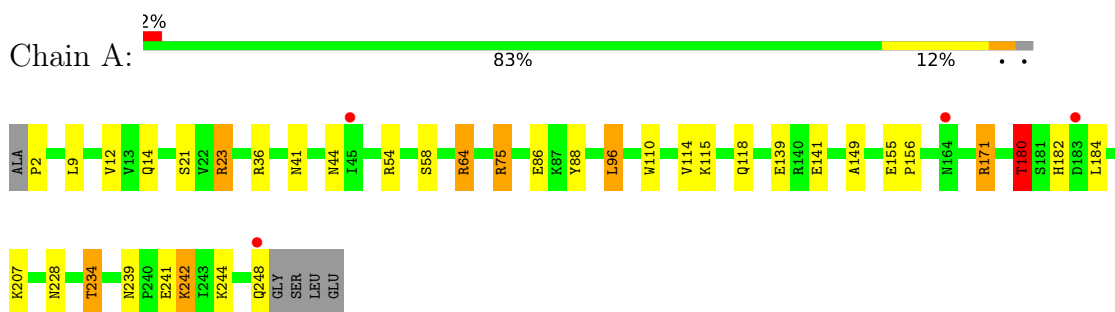
- Molecule 5 is water.

Mol	Chain	Residues	Atoms	ZeroOcc	AltConf
5	A	56	Total O 56 56	0	0
5	B	54	Total O 54 54	0	0

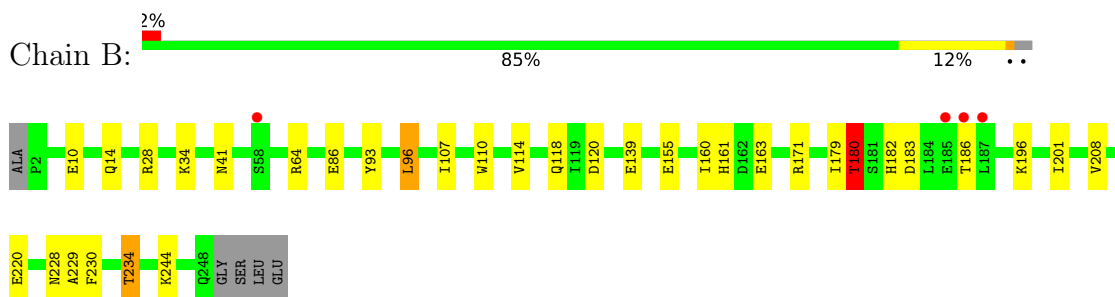
3 Residue-property plots [i](#)

These plots are drawn for all protein, RNA, DNA and oligosaccharide chains in the entry. The first graphic for a chain summarises the proportions of the various outlier classes displayed in the second graphic. The second graphic shows the sequence view annotated by issues in geometry and electron density. Residues are color-coded according to the number of geometric quality criteria for which they contain at least one outlier: green = 0, yellow = 1, orange = 2 and red = 3 or more. A red dot above a residue indicates a poor fit to the electron density ($RSRZ > 2$). Stretches of 2 or more consecutive residues without any outlier are shown as a green connector. Residues present in the sample, but not in the model, are shown in grey.

- Molecule 1: Kemp eliminase KE59 R13 3/11H



- Molecule 1: Kemp eliminase KE59 R13 3/11H



4 Data and refinement statistics

Property	Value	Source
Space group	P 21 21 2	Depositor
Cell constants a, b, c, α , β , γ	95.48Å 123.74Å 45.70Å 90.00° 90.00° 90.00°	Depositor
Resolution (Å)	8.00 – 1.90 8.00 – 1.90	Depositor EDS
% Data completeness (in resolution range)	98.6 (8.00-1.90) 98.6 (8.00-1.90)	Depositor EDS
R_{merge}	0.15	Depositor
R_{sym}	0.12	Depositor
$\langle I/\sigma(I) \rangle$ ¹	2.91 (at 1.90Å)	Xtrriage
Refinement program	REFMAC 5.5.0102	Depositor
R, R_{free}	0.184 , 0.251 0.187 , 0.253	Depositor DCC
R_{free} test set	2142 reflections (5.03%)	wwPDB-VP
Wilson B-factor (Å ²)	16.5	Xtrriage
Anisotropy	0.355	Xtrriage
Bulk solvent k_{sol} (e/Å ³), B_{sol} (Å ²)	0.55 , 66.5	EDS
L-test for twinning ²	$\langle L \rangle = 0.49$, $\langle L^2 \rangle = 0.33$	Xtrriage
Estimated twinning fraction	No twinning to report.	Xtrriage
F_o, F_c correlation	0.94	EDS
Total number of atoms	4013	wwPDB-VP
Average B, all atoms (Å ²)	18.0	wwPDB-VP

Xtrriage's analysis on translational NCS is as follows: *The largest off-origin peak in the Patterson function is 5.69% of the height of the origin peak. No significant pseudotranslation is detected.*

¹Intensities estimated from amplitudes.

²Theoretical values of $\langle |L| \rangle$, $\langle L^2 \rangle$ for acentric reflections are 0.5, 0.333 respectively for untwinned datasets, and 0.375, 0.2 for perfectly twinned datasets.

5 Model quality i

5.1 Standard geometry i

Bond lengths and bond angles in the following residue types are not validated in this section: NA, PO4, OCU

The Z score for a bond length (or angle) is the number of standard deviations the observed value is removed from the expected value. A bond length (or angle) with $|Z| > 5$ is considered an outlier worth inspection. RMSZ is the root-mean-square of all Z scores of the bond lengths (or angles).

Mol	Chain	Bond lengths		Bond angles	
		RMSZ	# Z >5	RMSZ	# Z >5
1	A	1.22	5/1947 (0.3%)	0.98	10/2630 (0.4%)
1	B	1.11	4/1969 (0.2%)	0.96	4/2660 (0.2%)
All	All	1.17	9/3916 (0.2%)	0.97	14/5290 (0.3%)

All (9) bond length outliers are listed below:

Mol	Chain	Res	Type	Atoms	Z	Observed(Å)	Ideal(Å)
1	A	155	GLU	CD-OE2	-15.38	1.08	1.25
1	B	86	GLU	CD-OE1	5.85	1.32	1.25
1	A	86	GLU	CD-OE1	-5.80	1.19	1.25
1	A	241	GLU	CB-CG	5.65	1.62	1.52
1	A	75	ARG	CB-CG	5.49	1.67	1.52
1	B	230	PHE	CE1-CZ	5.42	1.47	1.37
1	B	93	TYR	CD2-CE2	5.36	1.47	1.39
1	B	155	GLU	CD-OE2	-5.23	1.19	1.25
1	A	58	SER	CB-OG	-5.16	1.35	1.42

All (14) bond angle outliers are listed below:

Mol	Chain	Res	Type	Atoms	Z	Observed(°)	Ideal(°)
1	A	23	ARG	NE-CZ-NH1	7.30	123.95	120.30
1	A	23	ARG	NE-CZ-NH2	-7.22	116.69	120.30
1	A	36	ARG	NE-CZ-NH1	-6.67	116.97	120.30
1	A	171	ARG	NE-CZ-NH1	6.59	123.60	120.30
1	B	180	THR	CB-CA-C	-6.19	94.88	111.60
1	B	28	ARG	NE-CZ-NH2	-6.07	117.26	120.30
1	A	207	LYS	CD-CE-NZ	5.91	125.29	111.70
1	A	180	THR	CB-CA-C	-5.87	95.77	111.60
1	A	96	LEU	CB-CG-CD2	5.69	120.68	111.00
1	A	36	ARG	NE-CZ-NH2	5.56	123.08	120.30

Continued on next page...

Continued from previous page...

Mol	Chain	Res	Type	Atoms	Z	Observed(°)	Ideal(°)
1	B	120	ASP	CB-CG-OD1	5.26	123.03	118.30
1	A	171	ARG	NE-CZ-NH2	-5.25	117.68	120.30
1	A	54	ARG	NE-CZ-NH1	-5.10	117.75	120.30
1	B	244	LYS	CD-CE-NZ	5.05	123.32	111.70

There are no chirality outliers.

There are no planarity outliers.

5.2 Too-close contacts

In the following table, the Non-H and H(model) columns list the number of non-hydrogen atoms and hydrogen atoms in the chain respectively. The H(added) column lists the number of hydrogen atoms added and optimized by MolProbity. The Clashes column lists the number of clashes within the asymmetric unit, whereas Symm-Clashes lists symmetry-related clashes.

Mol	Chain	Non-H	H(model)	H(added)	Clashes	Symm-Clashes
1	A	1919	0	1946	20	0
1	B	1940	0	1960	22	0
2	A	11	0	3	0	0
2	B	11	0	3	0	0
3	A	10	0	0	4	0
3	B	10	0	0	2	0
4	A	1	0	0	0	0
4	B	1	0	0	0	0
5	A	56	0	0	1	0
5	B	54	0	0	4	0
All	All	4013	0	3912	42	0

The all-atom clashscore is defined as the number of clashes found per 1000 atoms (including hydrogen atoms). The all-atom clashscore for this structure is 5.

All (42) close contacts within the same asymmetric unit are listed below, sorted by their clash magnitude.

Atom-1	Atom-2	Interatomic distance (Å)	Clash overlap (Å)
1:B:163:GLU:OE1	1:B:196:LYS:HE3	1.27	1.29
1:B:180:THR:HG21	5:B:274:HOH:O	1.61	0.98
1:B:163:GLU:OE1	1:B:196:LYS:CE	2.18	0.91
1:A:234:THR:HG23	3:A:253:PO4:O3	1.77	0.83
1:A:180:THR:HG21	5:A:305:HOH:O	1.82	0.78
1:B:114:VAL:H	1:B:118:GLN:HE22	1.30	0.77

Continued on next page...

Continued from previous page...

Atom-1	Atom-2	Interatomic distance (Å)	Clash overlap (Å)
1:B:114:VAL:H	1:B:118:GLN:NE2	1.85	0.75
1:B:161[B]:HIS:HD2	5:B:257:HOH:O	1.69	0.74
1:A:114:VAL:H	1:A:118:GLN:HE22	1.40	0.68
1:A:114:VAL:H	1:A:118:GLN:NE2	1.94	0.66
1:A:139:GLU:OE2	1:A:171:ARG:HD2	1.97	0.65
1:A:41:ASN:ND2	1:A:228:ASN:HD22	1.96	0.64
1:A:182:HIS:HE1	3:A:253:PO4:O4	1.82	0.62
1:B:139:GLU:OE2	1:B:171:ARG:HD2	2.00	0.61
1:B:234:THR:HG23	3:B:253:PO4:O2	2.02	0.59
1:A:239:ASN:HB2	1:A:242:LYS:HD3	1.83	0.58
1:B:10:GLU:O	1:B:14:GLN:HG2	2.02	0.58
1:B:34:LYS:HE3	5:B:310:HOH:O	2.03	0.57
1:B:179:ILE:HD11	1:B:201:ILE:CD1	2.35	0.56
1:A:180:THR:HG22	1:A:182:HIS:H	1.70	0.56
1:B:41:ASN:ND2	1:B:228:ASN:HD22	2.04	0.55
1:B:64:ARG:NH1	3:B:292:PO4:O2	2.30	0.54
1:A:41:ASN:HD21	1:A:228:ASN:HD22	1.54	0.54
1:B:161[B]:HIS:CD2	5:B:257:HOH:O	2.53	0.52
1:A:9:LEU:HD11	1:A:184:LEU:HB3	1.94	0.49
1:A:9:LEU:HD21	1:A:184:LEU:HD13	1.96	0.47
1:B:41:ASN:HD21	1:B:228:ASN:HD22	1.62	0.47
1:B:96:LEU:HD21	1:B:107:ILE:HG21	1.98	0.46
1:B:183:ASP:OD2	1:B:186:THR:HG23	2.15	0.46
1:A:64:ARG:NH1	3:A:296:PO4:O3	2.39	0.44
1:B:179:ILE:HD11	1:B:201:ILE:HD12	1.99	0.44
1:A:149:ALA:HB3	1:A:156:PRO:HG3	2.00	0.43
1:B:208:VAL:HG22	1:B:229:ALA:HB3	2.01	0.43
1:A:2:PRO:N	1:A:141:GLU:OE2	2.52	0.43
1:A:12:VAL:HG23	1:A:88:TYR:CE2	2.54	0.43
1:A:12:VAL:CG2	1:A:88:TYR:CD2	3.02	0.42
1:A:115:LYS:HG2	1:A:118:GLN:HE21	1.84	0.42
1:B:96:LEU:CD2	1:B:107:ILE:HG21	2.49	0.42
1:B:180:THR:HG22	1:B:182:HIS:H	1.84	0.42
1:A:182:HIS:CE1	3:A:253:PO4:O4	2.66	0.42
1:B:160:ILE:O	1:B:160:ILE:HG13	2.21	0.41
1:A:244:LYS:O	1:A:248:GLN:HB2	2.22	0.40

There are no symmetry-related clashes.

5.3 Torsion angles [i](#)

5.3.1 Protein backbone [i](#)

In the following table, the Percentiles column shows the percent Ramachandran outliers of the chain as a percentile score with respect to all X-ray entries followed by that with respect to entries of similar resolution.

The Analysed column shows the number of residues for which the backbone conformation was analysed, and the total number of residues.

Mol	Chain	Analysed	Favoured	Allowed	Outliers	Percentiles	
1	A	245/252 (97%)	240 (98%)	5 (2%)	0	100	100
1	B	246/252 (98%)	242 (98%)	4 (2%)	0	100	100
All	All	491/504 (97%)	482 (98%)	9 (2%)	0	100	100

There are no Ramachandran outliers to report.

5.3.2 Protein sidechains [i](#)

In the following table, the Percentiles column shows the percent sidechain outliers of the chain as a percentile score with respect to all X-ray entries followed by that with respect to entries of similar resolution.

The Analysed column shows the number of residues for which the sidechain conformation was analysed, and the total number of residues.

Mol	Chain	Analysed	Rotameric	Outliers	Percentiles	
1	A	200/224 (89%)	189 (94%)	11 (6%)	21	12
1	B	205/224 (92%)	200 (98%)	5 (2%)	49	43
All	All	405/448 (90%)	389 (96%)	16 (4%)	31	22

All (16) residues with a non-rotameric sidechain are listed below:

Mol	Chain	Res	Type
1	A	14	GLN
1	A	21	SER
1	A	23	ARG
1	A	44	ASN
1	A	64	ARG
1	A	75	ARG
1	A	96	LEU
1	A	110	TRP

Continued on next page...

Continued from previous page...

Mol	Chain	Res	Type
1	A	180	THR
1	A	234	THR
1	A	242	LYS
1	B	96	LEU
1	B	110	TRP
1	B	180	THR
1	B	220	GLU
1	B	234	THR

Sometimes sidechains can be flipped to improve hydrogen bonding and reduce clashes. All (7) such sidechains are listed below:

Mol	Chain	Res	Type
1	A	41	ASN
1	A	118	GLN
1	A	124	ASN
1	A	182	HIS
1	B	41	ASN
1	B	118	GLN
1	B	124	ASN

5.3.3 RNA [i](#)

There are no RNA molecules in this entry.

5.4 Non-standard residues in protein, DNA, RNA chains [i](#)

There are no non-standard protein/DNA/RNA residues in this entry.

5.5 Carbohydrates [i](#)

There are no monosaccharides in this entry.

5.6 Ligand geometry [i](#)

Of 8 ligands modelled in this entry, 2 are monoatomic - leaving 6 for Mogul analysis.

In the following table, the Counts columns list the number of bonds (or angles) for which Mogul statistics could be retrieved, the number of bonds (or angles) that are observed in the model and the number of bonds (or angles) that are defined in the Chemical Component Dictionary. The

Link column lists molecule types, if any, to which the group is linked. The Z score for a bond length (or angle) is the number of standard deviations the observed value is removed from the expected value. A bond length (or angle) with $|Z| > 2$ is considered an outlier worth inspection. RMSZ is the root-mean-square of all Z scores of the bond lengths (or angles).

Mol	Type	Chain	Res	Link	Bond lengths			Bond angles		
					Counts	RMSZ	# Z > 2	Counts	RMSZ	# Z > 2
2	0CU	B	291	-	9,12,12	1.38	1 (11%)	10,17,17	1.97	4 (40%)
3	PO4	B	253	-	4,4,4	0.96	0	6,6,6	0.94	0
3	PO4	B	292	-	4,4,4	1.53	1 (25%)	6,6,6	1.51	1 (16%)
3	PO4	A	296	-	4,4,4	2.88	4 (100%)	6,6,6	3.09	3 (50%)
2	0CU	A	291	-	9,12,12	1.43	2 (22%)	10,17,17	2.17	3 (30%)
3	PO4	A	253	-	4,4,4	1.16	0	6,6,6	1.08	1 (16%)

In the following table, the Chirals column lists the number of chiral outliers, the number of chiral centers analysed, the number of these observed in the model and the number defined in the Chemical Component Dictionary. Similar counts are reported in the Torsion and Rings columns. '-' means no outliers of that kind were identified.

Mol	Type	Chain	Res	Link	Chirals	Torsions	Rings
2	0CU	B	291	-	-	-	0/2/2/2
2	0CU	A	291	-	-	-	0/2/2/2

All (8) bond length outliers are listed below:

Mol	Chain	Res	Type	Atoms	Z	Observed(Å)	Ideal(Å)
3	A	296	PO4	P-O2	-3.78	1.43	1.54
2	B	291	0CU	CAI-CAK	-2.86	1.38	1.42
3	A	296	PO4	P-O3	-2.71	1.46	1.54
2	A	291	0CU	CAI-CAK	-2.56	1.39	1.42
3	A	296	PO4	P-O1	-2.49	1.45	1.50
3	B	292	PO4	P-O2	-2.45	1.47	1.54
3	A	296	PO4	P-O4	-2.31	1.47	1.54
2	A	291	0CU	CAD-CAJ	-2.18	1.38	1.41

All (12) bond angle outliers are listed below:

Mol	Chain	Res	Type	Atoms	Z	Observed(°)	Ideal(°)
3	A	296	PO4	O3-P-O1	-4.97	92.71	110.89
3	A	296	PO4	O4-P-O2	4.58	122.67	107.97
2	A	291	0CU	CAC-CAI-CAK	-4.25	118.01	120.98
2	A	291	0CU	CAH-CAD-CAJ	-3.76	116.32	119.50
2	B	291	0CU	CAD-CAJ-NAF	3.17	135.65	130.51

Continued on next page...

Continued from previous page...

Mol	Chain	Res	Type	Atoms	Z	Observed(°)	Ideal(°)
2	B	291	0CU	CAH-CAD-CAJ	-3.02	116.95	119.50
3	B	292	PO4	O4-P-O3	2.74	116.78	107.97
3	A	296	PO4	O2-P-O1	-2.73	100.89	110.89
2	B	291	0CU	CAC-CAI-CAK	-2.58	119.18	120.98
2	A	291	0CU	CAD-CAJ-NAF	2.13	133.97	130.51
2	B	291	0CU	CAC-CAI-CLB	2.04	122.67	118.73
3	A	253	PO4	O4-P-O2	-2.01	101.50	107.97

There are no chirality outliers.

There are no torsion outliers.

There are no ring outliers.

4 monomers are involved in 6 short contacts:

Mol	Chain	Res	Type	Clashes	Symm-Clashes
3	B	253	PO4	1	0
3	B	292	PO4	1	0
3	A	296	PO4	1	0
3	A	253	PO4	3	0

5.7 Other polymers [i](#)

There are no such residues in this entry.

5.8 Polymer linkage issues [i](#)

There are no chain breaks in this entry.

6 Fit of model and data [i](#)

6.1 Protein, DNA and RNA chains [i](#)

In the following table, the column labelled ‘#RSRZ> 2’ contains the number (and percentage) of RSRZ outliers, followed by percent RSRZ outliers for the chain as percentile scores relative to all X-ray entries and entries of similar resolution. The OWAB column contains the minimum, median, 95th percentile and maximum values of the occupancy-weighted average B-factor per residue. The column labelled ‘Q< 0.9’ lists the number of (and percentage) of residues with an average occupancy less than 0.9.

Mol	Chain	Analysed	<RSRZ>	#RSRZ>2	OWAB(Å ²)	Q<0.9
1	A	247/252 (98%)	-0.26	4 (1%) 72 74	10, 16, 28, 38	0
1	B	247/252 (98%)	-0.24	4 (1%) 72 74	10, 18, 30, 45	0
All	All	494/504 (98%)	-0.25	8 (1%) 72 74	10, 17, 29, 45	0

All (8) RSRZ outliers are listed below:

Mol	Chain	Res	Type	RSRZ
1	B	186	THR	3.5
1	B	185	GLU	3.1
1	A	164	ASN	2.8
1	A	45	ILE	2.5
1	B	187	LEU	2.4
1	A	248	GLN	2.3
1	B	58	SER	2.1
1	A	183	ASP	2.1

6.2 Non-standard residues in protein, DNA, RNA chains [i](#)

There are no non-standard protein/DNA/RNA residues in this entry.

6.3 Carbohydrates [i](#)

There are no monosaccharides in this entry.

6.4 Ligands [i](#)

In the following table, the Atoms column lists the number of modelled atoms in the group and the number defined in the chemical component dictionary. The B-factors column lists the minimum,

median, 95th percentile and maximum values of B factors of atoms in the group. The column labelled 'Q< 0.9' lists the number of atoms with occupancy less than 0.9.

Mol	Type	Chain	Res	Atoms	RSCC	RSR	B-factors(Å ²)	Q<0.9
2	OCU	A	291	11/11	0.95	0.10	19,20,21,27	0
2	OCU	B	291	11/11	0.96	0.09	24,25,26,30	0
3	PO4	B	292	5/5	0.97	0.14	22,34,36,36	0
3	PO4	A	253	5/5	0.98	0.09	20,22,25,25	0
3	PO4	B	253	5/5	0.98	0.07	22,27,29,30	0
3	PO4	A	296	5/5	0.99	0.14	11,20,30,32	0
4	NA	B	301	1/1	0.99	0.37	2,2,2,2	0
4	NA	A	301	1/1	1.00	0.33	4,4,4,4	0

6.5 Other polymers [i](#)

There are no such residues in this entry.