



Full wwPDB X-ray Structure Validation Report ⓘ

Feb 15, 2024 – 05:57 AM EST

PDB ID : 3OWX
Title : X-ray Structural study of quinone reductase II inhibition by compounds with micromolar to nanomolar range IC50 values
Authors : Pegan, S.D.; Sturdy, M.; Ferry, G.; Delagrange, P.; Boutin, J.A.; Mesecar, A.D.
Deposited on : 2010-09-20
Resolution : 1.85 Å(reported)

This is a Full wwPDB X-ray Structure Validation Report for a publicly released PDB entry.

We welcome your comments at validation@mail.wwpdb.org

A user guide is available at

<https://www.wwpdb.org/validation/2017/XrayValidationReportHelp>

with specific help available everywhere you see the ⓘ symbol.

The types of validation reports are described at

<http://www.wwpdb.org/validation/2017/FAQs#types>.

The following versions of software and data (see [references ⓘ](#)) were used in the production of this report:

MolProbity : 4.02b-467
Mogul : 1.8.5 (274361), CSD as541be (2020)
Xtrriage (Phenix) : 1.13
EDS : 2.36
buster-report : 1.1.7 (2018)
Percentile statistics : 20191225.v01 (using entries in the PDB archive December 25th 2019)
Refmac : 5.8.0158
CCP4 : 7.0.044 (Gargrove)
Ideal geometry (proteins) : Engh & Huber (2001)
Ideal geometry (DNA, RNA) : Parkinson et al. (1996)
Validation Pipeline (wwPDB-VP) : 2.36

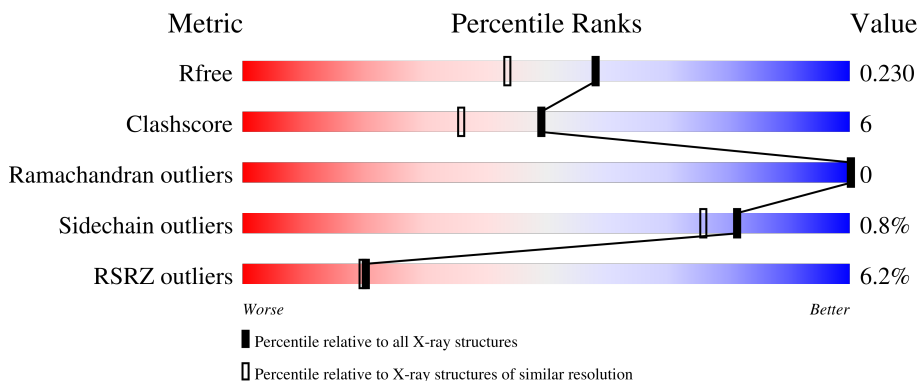
1 Overall quality at a glance

The following experimental techniques were used to determine the structure:

X-RAY DIFFRACTION

The reported resolution of this entry is 1.85 Å.

Percentile scores (ranging between 0-100) for global validation metrics of the entry are shown in the following graphic. The table shows the number of entries on which the scores are based.



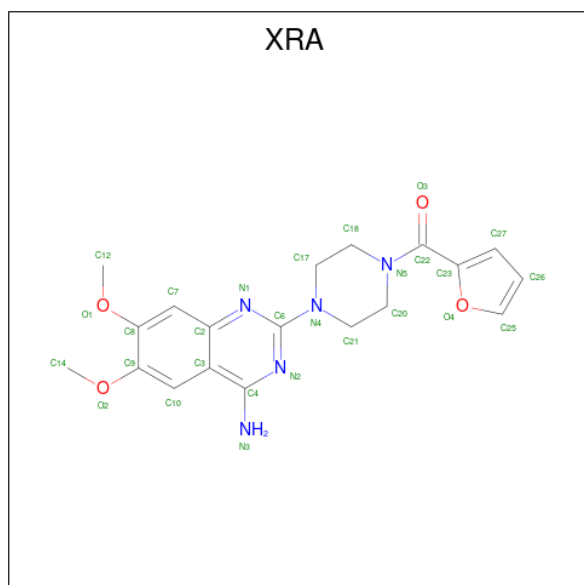
Metric	Whole archive (#Entries)	Similar resolution (#Entries, resolution range(Å))
R_{free}	130704	2469 (1.86-1.86)
Clashscore	141614	2625 (1.86-1.86)
Ramachandran outliers	138981	2592 (1.86-1.86)
Sidechain outliers	138945	2592 (1.86-1.86)
RSRZ outliers	127900	2436 (1.86-1.86)

The table below summarises the geometric issues observed across the polymeric chains and their fit to the electron density. The red, orange, yellow and green segments of the lower bar indicate the fraction of residues that contain outliers for ≥ 3 , 2, 1 and 0 types of geometric quality criteria respectively. A grey segment represents the fraction of residues that are not modelled. The numeric value for each fraction is indicated below the corresponding segment, with a dot representing fractions $\leq 5\%$. The upper red bar (where present) indicates the fraction of residues that have poor fit to the electron density. The numeric value is given above the bar.

Mol	Chain	Length	Quality of chain
1	A	231	
1	B	231	

Mol	Chain	Residues	Atoms				ZeroOcc	AltConf	
			Total	C	N	O			P
3	A	1	53	27	9	15	2	0	0
3	B	1	53	27	9	15	2	0	0

- Molecule 4 is 2-[4-(furan-2-ylcarbonyl)piperazin-1-yl]-6,7-dimethoxyquinazolin-4-amine (three-letter code: XRA) (formula: C₁₉H₂₁N₅O₄).



Mol	Chain	Residues	Atoms				ZeroOcc	AltConf
			Total	C	N	O		
4	A	1	56	38	10	8	0	1
4	B	1	56	38	10	8	0	1

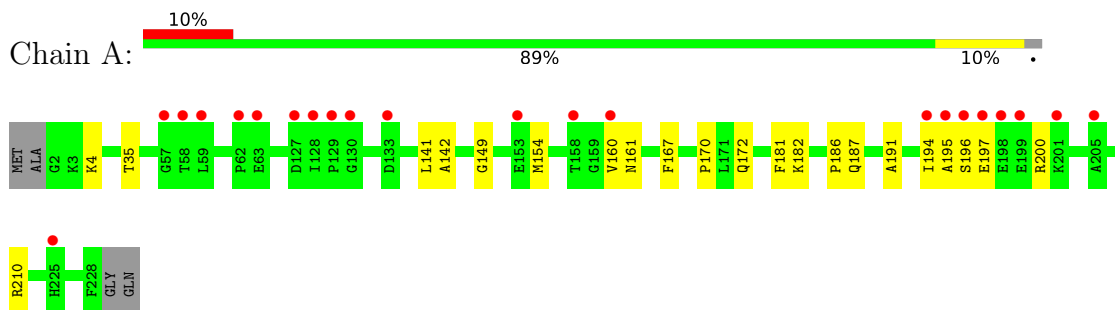
- Molecule 5 is water.

Mol	Chain	Residues	Atoms		ZeroOcc	AltConf
			Total	O		
5	A	163	163	163	0	0
5	B	206	206	206	0	0

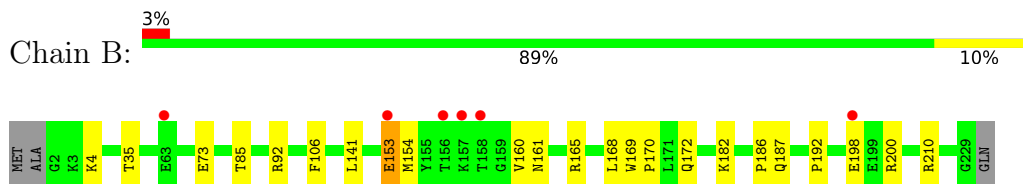
3 Residue-property plots [i](#)

These plots are drawn for all protein, RNA, DNA and oligosaccharide chains in the entry. The first graphic for a chain summarises the proportions of the various outlier classes displayed in the second graphic. The second graphic shows the sequence view annotated by issues in geometry and electron density. Residues are color-coded according to the number of geometric quality criteria for which they contain at least one outlier: green = 0, yellow = 1, orange = 2 and red = 3 or more. A red dot above a residue indicates a poor fit to the electron density ($RSRZ > 2$). Stretches of 2 or more consecutive residues without any outlier are shown as a green connector. Residues present in the sample, but not in the model, are shown in grey.

- Molecule 1: Ribosyldihyronicotinamide dehydrogenase [quinone]



- Molecule 1: Ribosyldihyronicotinamide dehydrogenase [quinone]



4 Data and refinement statistics

Property	Value	Source
Space group	P 21 21 21	Depositor
Cell constants a, b, c, α , β , γ	56.51Å 83.50Å 106.80Å 90.00° 90.00° 90.00°	Depositor
Resolution (Å)	65.80 – 1.85 42.87 – 1.85	Depositor EDS
% Data completeness (in resolution range)	99.2 (65.80-1.85) 99.2 (42.87-1.85)	Depositor EDS
R_{merge}	0.08	Depositor
R_{sym}	(Not available)	Depositor
$\langle I/\sigma(I) \rangle$ ¹	2.27 (at 1.86Å)	Xtrriage
Refinement program	REFMAC	Depositor
R, R_{free}	0.192 , 0.230 0.194 , 0.230	Depositor DCC
R_{free} test set	2197 reflections (5.04%)	wwPDB-VP
Wilson B-factor (Å ²)	19.2	Xtrriage
Anisotropy	0.731	Xtrriage
Bulk solvent k_{sol} (e/Å ³), B_{sol} (Å ²)	0.37 , 48.8	EDS
L-test for twinning ²	$\langle L \rangle = 0.49$, $\langle L^2 \rangle = 0.33$	Xtrriage
Estimated twinning fraction	No twinning to report.	Xtrriage
F_o, F_c correlation	0.95	EDS
Total number of atoms	4203	wwPDB-VP
Average B, all atoms (Å ²)	23.0	wwPDB-VP

Xtrriage's analysis on translational NCS is as follows: *The largest off-origin peak in the Patterson function is 5.72% of the height of the origin peak. No significant pseudotranslation is detected.*

¹Intensities estimated from amplitudes.

²Theoretical values of $\langle |L| \rangle$, $\langle L^2 \rangle$ for acentric reflections are 0.5, 0.333 respectively for untwinned datasets, and 0.375, 0.2 for perfectly twinned datasets.

5 Model quality

5.1 Standard geometry

Bond lengths and bond angles in the following residue types are not validated in this section: FAD, XRA, ZN

The Z score for a bond length (or angle) is the number of standard deviations the observed value is removed from the expected value. A bond length (or angle) with $|Z| > 5$ is considered an outlier worth inspection. RMSZ is the root-mean-square of all Z scores of the bond lengths (or angles).

Mol	Chain	Bond lengths		Bond angles	
		RMSZ	# Z >5	RMSZ	# Z >5
1	A	0.53	0/1855	0.62	0/2518
1	B	0.54	0/1859	0.62	0/2523
All	All	0.53	0/3714	0.62	0/5041

There are no bond length outliers.

There are no bond angle outliers.

There are no chirality outliers.

There are no planarity outliers.

5.2 Too-close contacts

In the following table, the Non-H and H(model) columns list the number of non-hydrogen atoms and hydrogen atoms in the chain respectively. The H(added) column lists the number of hydrogen atoms added and optimized by MolProbity. The Clashes column lists the number of clashes within the asymmetric unit, whereas Symm-Clashes lists symmetry-related clashes.

Mol	Chain	Non-H	H(model)	H(added)	Clashes	Symm-Clashes
1	A	1805	0	1760	20	0
1	B	1809	0	1763	17	0
2	A	1	0	0	0	0
2	B	1	0	0	0	0
3	A	53	0	31	2	0
3	B	53	0	31	1	0
4	A	56	0	42	10	0
4	B	56	0	42	8	0
5	A	163	0	0	0	0
5	B	206	0	0	6	0
All	All	4203	0	3669	44	0

The all-atom clashscore is defined as the number of clashes found per 1000 atoms (including hydrogen atoms). The all-atom clashscore for this structure is 6.

All (44) close contacts within the same asymmetric unit are listed below, sorted by their clash magnitude.

Atom-1	Atom-2	Interatomic distance (Å)	Clash overlap (Å)
1:A:195:ALA:HB1	1:A:196:SER:HA	1.33	1.09
1:A:154:MET:SD	4:A:233[B]:XRA:H21	2.05	0.96
1:A:195:ALA:HB1	1:A:196:SER:CA	2.02	0.90
1:B:85:THR:HG22	5:B:356:HOH:O	1.71	0.89
1:A:195:ALA:CB	1:A:196:SER:HA	2.05	0.85
1:A:187:GLN:HE21	1:A:210:ARG:HH11	1.36	0.73
1:B:154:MET:CE	4:B:233[B]:XRA:H27	2.20	0.70
1:A:161:ASN:HD21	4:A:233[A]:XRA:C12	2.10	0.64
1:A:187:GLN:NE2	1:A:210:ARG:HH11	1.97	0.62
4:A:233[B]:XRA:C27	4:A:233[B]:XRA:H20A	2.30	0.62
1:B:154:MET:HE2	4:B:233[B]:XRA:H27	1.82	0.61
1:B:153:GLU:HG3	5:B:331:HOH:O	2.03	0.58
1:B:169:TRP:HB3	1:B:170:PRO:HD3	1.91	0.53
4:B:233[A]:XRA:H20	5:B:351:HOH:O	2.09	0.52
1:B:187:GLN:HE21	1:B:210:ARG:HH11	1.56	0.52
1:B:154:MET:HE1	4:B:233[B]:XRA:H27	1.92	0.50
1:A:167:PHE:O	1:A:170:PRO:HD2	2.12	0.50
1:A:172:GLN:HE22	1:A:186:PRO:HD3	1.76	0.50
1:A:161:ASN:ND2	4:A:233[A]:XRA:H12	2.26	0.50
4:A:233[B]:XRA:H20A	4:A:233[B]:XRA:H27	1.94	0.49
3:A:232:FAD:O4	4:A:233[A]:XRA:H14A	2.12	0.49
1:A:197:GLU:HG2	1:A:200:ARG:HH12	1.78	0.49
3:A:232:FAD:H1'2	4:A:233[B]:XRA:H12A	1.94	0.49
1:A:161:ASN:ND2	4:A:233[A]:XRA:C12	2.76	0.48
1:B:141:LEU:HD23	1:B:182:LYS:HB2	1.95	0.48
1:A:197:GLU:HG2	1:A:200:ARG:NH1	2.29	0.48
3:B:232:FAD:O4	4:B:233[A]:XRA:H14A	2.14	0.48
1:A:191:ALA:HB1	1:A:194:ILE:HG12	1.96	0.47
1:B:165:ARG:HA	1:B:168:LEU:HD12	1.97	0.47
1:A:154:MET:SD	4:A:233[B]:XRA:H17A	2.55	0.47
1:A:195:ALA:HB1	1:A:196:SER:C	2.35	0.47
1:B:198:GLU:H	1:B:198:GLU:CD	2.19	0.46
1:B:92:ARG:HD2	5:B:437:HOH:O	2.16	0.46
1:A:141:LEU:HD23	1:A:182:LYS:HB2	1.99	0.45
1:B:73:GLU:HG2	5:B:313:HOH:O	2.15	0.45
1:B:172:GLN:HE22	1:B:186:PRO:HD3	1.82	0.45
1:B:161:ASN:OD1	4:B:233[A]:XRA:H12	2.18	0.43

Continued on next page...

Continued from previous page...

Atom-1	Atom-2	Interatomic distance (Å)	Clash overlap (Å)
1:A:142:ALA:HB2	1:A:181:PHE:CD1	2.55	0.42
1:B:192:PRO:O	1:B:200:ARG:HD3	2.19	0.41
4:B:233[A]:XRA:C20	5:B:351:HOH:O	2.66	0.41
1:B:106:PHE:HE1	4:B:233[B]:XRA:H12	1.86	0.41
1:A:4:LYS:HG2	1:A:35:THR:HB	2.03	0.40
1:A:149:GLY:HA3	4:A:233[A]:XRA:H17A	2.03	0.40
1:B:4:LYS:HG2	1:B:35:THR:HB	2.03	0.40

There are no symmetry-related clashes.

5.3 Torsion angles [i](#)

5.3.1 Protein backbone [i](#)

In the following table, the Percentiles column shows the percent Ramachandran outliers of the chain as a percentile score with respect to all X-ray entries followed by that with respect to entries of similar resolution.

The Analysed column shows the number of residues for which the backbone conformation was analysed, and the total number of residues.

Mol	Chain	Analysed	Favoured	Allowed	Outliers	Percentiles	
1	A	225/231 (97%)	217 (96%)	8 (4%)	0	100	100
1	B	226/231 (98%)	219 (97%)	7 (3%)	0	100	100
All	All	451/462 (98%)	436 (97%)	15 (3%)	0	100	100

There are no Ramachandran outliers to report.

5.3.2 Protein sidechains [i](#)

In the following table, the Percentiles column shows the percent sidechain outliers of the chain as a percentile score with respect to all X-ray entries followed by that with respect to entries of similar resolution.

The Analysed column shows the number of residues for which the sidechain conformation was analysed, and the total number of residues.

Mol	Chain	Analysed	Rotameric	Outliers	Percentiles	
1	A	193/195 (99%)	192 (100%)	1 (0%)	88	86

Continued on next page...

Continued from previous page...

Mol	Chain	Analysed	Rotameric	Outliers	Percentiles	
1	B	193/195 (99%)	191 (99%)	2 (1%)	76	69
All	All	386/390 (99%)	383 (99%)	3 (1%)	81	76

All (3) residues with a non-rotameric sidechain are listed below:

Mol	Chain	Res	Type
1	A	160	VAL
1	B	153	GLU
1	B	160	VAL

Sometimes sidechains can be flipped to improve hydrogen bonding and reduce clashes. All (6) such sidechains are listed below:

Mol	Chain	Res	Type
1	A	172	GLN
1	A	187	GLN
1	A	212	GLN
1	B	161	ASN
1	B	172	GLN
1	B	187	GLN

5.3.3 RNA [i](#)

There are no RNA molecules in this entry.

5.4 Non-standard residues in protein, DNA, RNA chains [i](#)

There are no non-standard protein/DNA/RNA residues in this entry.

5.5 Carbohydrates [i](#)

There are no monosaccharides in this entry.

5.6 Ligand geometry [i](#)

Of 8 ligands modelled in this entry, 2 are monoatomic - leaving 6 for Mogul analysis.

In the following table, the Counts columns list the number of bonds (or angles) for which Mogul statistics could be retrieved, the number of bonds (or angles) that are observed in the model and

the number of bonds (or angles) that are defined in the Chemical Component Dictionary. The Link column lists molecule types, if any, to which the group is linked. The Z score for a bond length (or angle) is the number of standard deviations the observed value is removed from the expected value. A bond length (or angle) with $|Z| > 2$ is considered an outlier worth inspection. RMSZ is the root-mean-square of all Z scores of the bond lengths (or angles).

Mol	Type	Chain	Res	Link	Bond lengths			Bond angles		
					Counts	RMSZ	# Z > 2	Counts	RMSZ	# Z > 2
4	XRA	B	233[A]	-	27,31,31	1.80	6 (22%)	34,44,44	2.45	10 (29%)
4	XRA	A	233[B]	-	27,31,31	1.58	4 (14%)	34,44,44	2.44	13 (38%)
3	FAD	A	232	-	53,58,58	1.21	4 (7%)	68,89,89	1.38	9 (13%)
4	XRA	A	233[A]	-	27,31,31	1.67	6 (22%)	34,44,44	2.26	14 (41%)
3	FAD	B	232	-	53,58,58	1.24	5 (9%)	68,89,89	1.46	10 (14%)
4	XRA	B	233[B]	-	27,31,31	1.66	4 (14%)	34,44,44	2.20	14 (41%)

In the following table, the Chirals column lists the number of chiral outliers, the number of chiral centers analysed, the number of these observed in the model and the number defined in the Chemical Component Dictionary. Similar counts are reported in the Torsion and Rings columns. '-' means no outliers of that kind were identified.

Mol	Type	Chain	Res	Link	Chirals	Torsions	Rings
4	XRA	B	233[A]	-	-	8/12/26/26	0/4/4/4
4	XRA	A	233[B]	-	-	4/12/26/26	0/4/4/4
3	FAD	A	232	-	-	3/30/50/50	0/6/6/6
4	XRA	A	233[A]	-	-	6/12/26/26	0/4/4/4
3	FAD	B	232	-	-	2/30/50/50	0/6/6/6
4	XRA	B	233[B]	-	-	6/12/26/26	0/4/4/4

All (29) bond length outliers are listed below:

Mol	Chain	Res	Type	Atoms	Z	Observed(Å)	Ideal(Å)
4	B	233[A]	XRA	C4-C3	4.77	1.49	1.45
4	A	233[A]	XRA	C9-C8	4.48	1.50	1.40
4	B	233[B]	XRA	C9-C8	4.34	1.50	1.40
3	B	232	FAD	C4X-N5	4.31	1.39	1.30
3	A	232	FAD	C4X-N5	4.27	1.39	1.30
4	B	233[A]	XRA	C9-C8	4.18	1.49	1.40
4	A	233[B]	XRA	C9-C8	4.05	1.49	1.40
3	B	232	FAD	C2A-N3A	4.03	1.38	1.32
3	A	232	FAD	C2A-N3A	3.95	1.38	1.32
4	B	233[B]	XRA	C3-C2	3.92	1.49	1.42
4	A	233[A]	XRA	C3-C2	3.88	1.48	1.42

Continued on next page...

Continued from previous page...

Mol	Chain	Res	Type	Atoms	Z	Observed(Å)	Ideal(Å)
4	A	233[B]	XRA	C3-C2	3.82	1.48	1.42
4	A	233[A]	XRA	C4-C3	3.64	1.48	1.45
4	B	233[A]	XRA	C3-C2	3.59	1.48	1.42
4	B	233[B]	XRA	C4-C3	3.55	1.48	1.45
4	A	233[B]	XRA	C4-C3	3.49	1.48	1.45
3	B	232	FAD	C10-N1	3.12	1.39	1.33
4	B	233[A]	XRA	C6-N4	2.99	1.41	1.35
3	A	232	FAD	C10-N1	2.93	1.39	1.33
4	B	233[B]	XRA	C6-N4	2.89	1.41	1.35
4	A	233[A]	XRA	C6-N4	2.63	1.40	1.35
4	B	233[A]	XRA	C10-C9	2.50	1.41	1.36
3	A	232	FAD	C2A-N1A	2.41	1.38	1.33
3	B	232	FAD	C2A-N1A	2.30	1.38	1.33
3	B	232	FAD	C1'-C2'	2.27	1.55	1.52
4	A	233[B]	XRA	C6-N4	2.20	1.39	1.35
4	A	233[A]	XRA	C10-C9	2.13	1.40	1.36
4	A	233[A]	XRA	C7-C2	-2.02	1.38	1.41
4	B	233[A]	XRA	C7-C2	-2.00	1.38	1.41

All (70) bond angle outliers are listed below:

Mol	Chain	Res	Type	Atoms	Z	Observed(°)	Ideal(°)
3	A	232	FAD	N3A-C2A-N1A	-5.86	119.52	128.68
4	B	233[A]	XRA	N2-C6-N4	5.77	124.23	117.11
3	B	232	FAD	N3A-C2A-N1A	-5.73	119.73	128.68
4	A	233[A]	XRA	O1-C8-C7	-5.48	118.15	125.24
4	A	233[B]	XRA	C20-C21-N4	-5.30	100.40	110.70
4	A	233[A]	XRA	C14-O2-C9	5.05	125.15	117.53
4	A	233[B]	XRA	C18-C17-N4	-5.02	100.95	110.70
4	B	233[A]	XRA	O1-C8-C7	-4.89	118.92	125.24
4	A	233[B]	XRA	O2-C9-C10	-4.86	118.96	125.24
4	B	233[A]	XRA	C18-C17-N4	-4.46	102.03	110.70
4	B	233[A]	XRA	C14-O2-C9	4.33	124.07	117.53
4	A	233[B]	XRA	C3-C4-N2	-4.20	117.56	121.93
4	B	233[B]	XRA	O2-C9-C10	-4.14	119.89	125.24
4	A	233[A]	XRA	O1-C8-C9	3.93	120.88	115.41
4	B	233[B]	XRA	C3-C4-N2	-3.92	117.85	121.93
4	B	233[A]	XRA	C17-C18-N5	-3.90	102.08	110.44
4	B	233[A]	XRA	O1-C8-C9	3.89	120.83	115.41
4	A	233[B]	XRA	C3-C2-N1	-3.82	118.76	122.81
4	B	233[B]	XRA	O1-C8-C7	-3.76	120.37	125.24
4	A	233[A]	XRA	C21-N4-C17	3.74	119.77	111.52

Continued on next page...

Continued from previous page...

Mol	Chain	Res	Type	Atoms	Z	Observed(°)	Ideal(°)
4	B	233[B]	XRA	C3-C2-N1	-3.73	118.85	122.81
4	B	233[B]	XRA	C20-C21-N4	-3.71	103.49	110.70
4	A	233[B]	XRA	O1-C8-C7	-3.70	120.46	125.24
4	A	233[A]	XRA	C18-C17-N4	-3.69	103.54	110.70
4	A	233[B]	XRA	C20-N5-C18	3.54	119.44	112.62
4	B	233[B]	XRA	C20-N5-C18	3.51	119.38	112.62
4	B	233[A]	XRA	C21-N4-C17	3.44	119.10	111.52
4	A	233[B]	XRA	O1-C8-C9	3.42	120.18	115.41
4	B	233[A]	XRA	C3-C2-N1	-3.40	119.20	122.81
4	B	233[A]	XRA	C17-N4-C6	-3.22	116.35	121.69
4	B	233[B]	XRA	O2-C9-C8	3.22	119.89	115.41
4	A	233[A]	XRA	C3-C4-N2	-3.18	118.62	121.93
4	A	233[B]	XRA	O2-C9-C8	3.14	119.78	115.41
4	B	233[B]	XRA	C18-C17-N4	-3.11	104.66	110.70
3	B	232	FAD	C4-N3-C2	-3.10	119.92	125.64
4	A	233[B]	XRA	C21-N4-C17	3.09	118.33	111.52
4	B	233[A]	XRA	C3-C4-N2	-2.98	118.83	121.93
4	B	233[B]	XRA	O1-C8-C9	2.96	119.53	115.41
4	A	233[A]	XRA	C3-C2-N1	-2.89	119.75	122.81
3	B	232	FAD	C4X-C4-N3	2.88	120.50	113.19
3	A	232	FAD	C4-N3-C2	-2.87	120.33	125.64
3	B	232	FAD	C4X-C10-N10	2.86	120.66	116.48
3	A	232	FAD	C4X-C10-N10	2.81	120.58	116.48
4	B	233[B]	XRA	C10-C3-C4	-2.77	121.96	124.76
4	A	233[B]	XRA	C12-O1-C8	2.74	121.67	117.53
4	B	233[B]	XRA	C6-N2-C4	2.70	122.67	117.18
3	A	232	FAD	C4X-C4-N3	2.64	119.89	113.19
3	B	232	FAD	C4-C4X-N5	2.58	121.91	118.23
4	B	233[B]	XRA	C21-N4-C17	2.56	117.18	111.52
3	B	232	FAD	C10-C4X-N5	-2.56	119.43	124.86
3	A	232	FAD	C1B-N9A-C4A	-2.55	122.15	126.64
4	A	233[A]	XRA	C6-N2-C4	2.55	122.37	117.18
3	B	232	FAD	O4-C4-C4X	-2.51	119.94	126.60
3	A	232	FAD	C10-C4X-N5	-2.51	119.53	124.86
3	A	232	FAD	P-O3P-PA	-2.49	124.28	132.83
4	A	233[B]	XRA	C6-N2-C4	2.45	122.16	117.18
4	A	233[B]	XRA	C10-C3-C4	-2.42	122.31	124.76
4	A	233[A]	XRA	C20-C21-N4	-2.38	106.08	110.70
4	A	233[A]	XRA	O2-C9-C8	2.34	118.67	115.41
3	A	232	FAD	C4-C4X-N5	2.32	121.54	118.23
4	A	233[A]	XRA	N2-C6-N4	2.32	119.97	117.11
3	B	232	FAD	C10-N1-C2	2.28	121.46	116.90

Continued on next page...

Continued from previous page...

Mol	Chain	Res	Type	Atoms	Z	Observed(°)	Ideal(°)
4	A	233[A]	XRA	C20-N5-C18	2.27	116.99	112.62
4	A	233[A]	XRA	C17-C18-N5	-2.20	105.73	110.44
4	B	233[B]	XRA	C14-O2-C9	2.18	120.82	117.53
3	B	232	FAD	P-O3P-PA	-2.16	125.41	132.83
3	A	232	FAD	C9A-C5X-N5	-2.09	120.16	122.43
4	A	233[A]	XRA	O2-C9-C10	-2.08	122.55	125.24
3	B	232	FAD	C1B-N9A-C4A	-2.05	123.04	126.64
4	B	233[B]	XRA	C12-O1-C8	2.03	120.60	117.53

There are no chirality outliers.

All (29) torsion outliers are listed below:

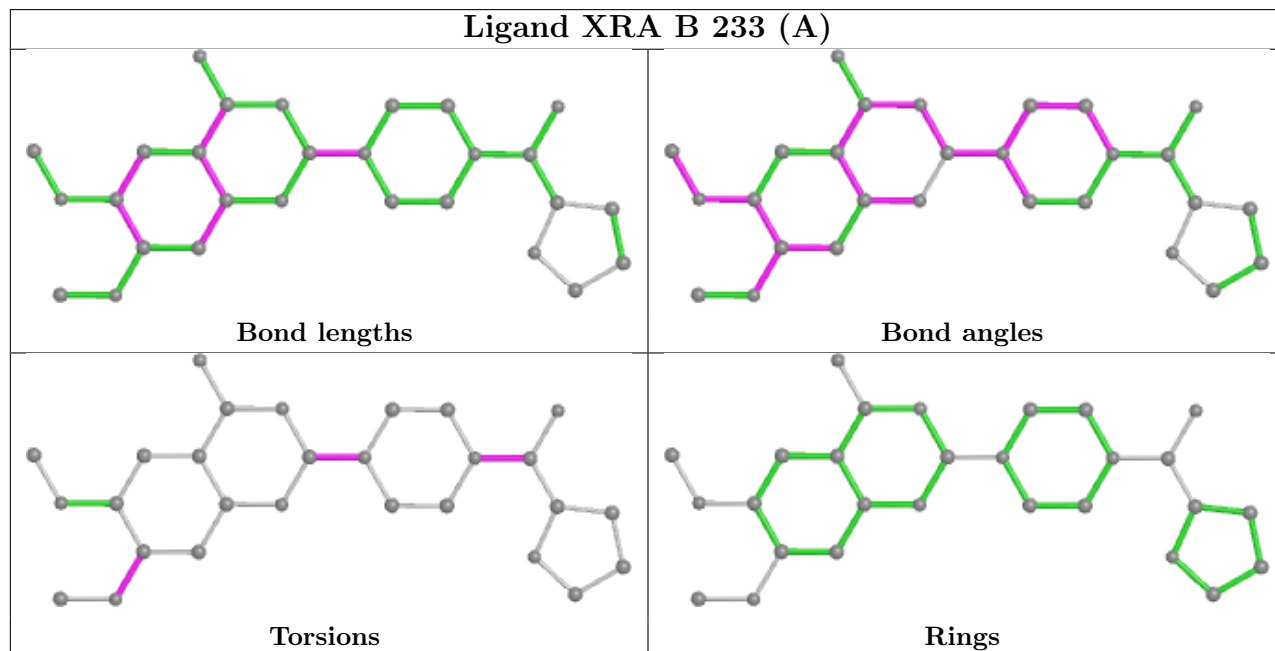
Mol	Chain	Res	Type	Atoms
3	A	232	FAD	C5B-O5B-PA-O1A
4	A	233[A]	XRA	N1-C6-N4-C17
4	A	233[A]	XRA	N2-C6-N4-C17
4	A	233[A]	XRA	N1-C6-N4-C21
4	A	233[A]	XRA	N2-C6-N4-C21
4	B	233[A]	XRA	N2-C6-N4-C17
4	B	233[A]	XRA	N1-C6-N4-C21
4	B	233[B]	XRA	O3-C22-N5-C18
4	B	233[B]	XRA	C23-C22-N5-C18
4	B	233[B]	XRA	O3-C22-N5-C20
4	B	233[B]	XRA	C23-C22-N5-C20
4	B	233[A]	XRA	N1-C6-N4-C17
4	B	233[A]	XRA	N2-C6-N4-C21
4	B	233[A]	XRA	C23-C22-N5-C18
4	A	233[A]	XRA	C9-C8-O1-C12
4	A	233[A]	XRA	C7-C8-O1-C12
4	B	233[A]	XRA	O3-C22-N5-C18
4	A	233[B]	XRA	O3-C22-N5-C18
4	A	233[B]	XRA	C8-C9-O2-C14
4	B	233[A]	XRA	C9-C8-O1-C12
4	A	233[B]	XRA	C23-C22-N5-C18
4	B	233[B]	XRA	C8-C9-O2-C14
3	A	232	FAD	C5B-O5B-PA-O3P
4	A	233[B]	XRA	C10-C9-O2-C14
3	A	232	FAD	C5B-O5B-PA-O2A
3	B	232	FAD	C5B-O5B-PA-O2A
4	B	233[A]	XRA	C7-C8-O1-C12
4	B	233[B]	XRA	C10-C9-O2-C14
3	B	232	FAD	C5B-O5B-PA-O3P

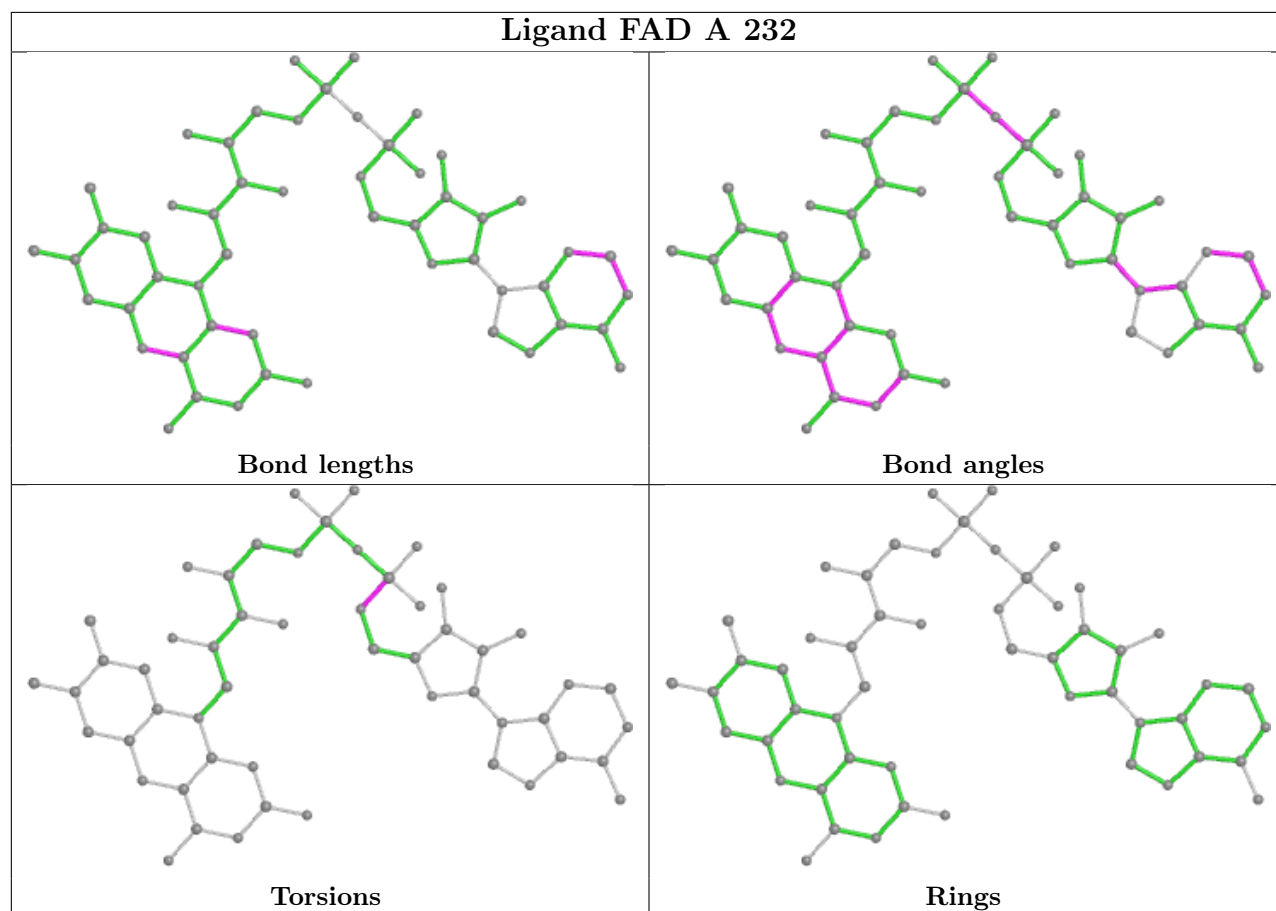
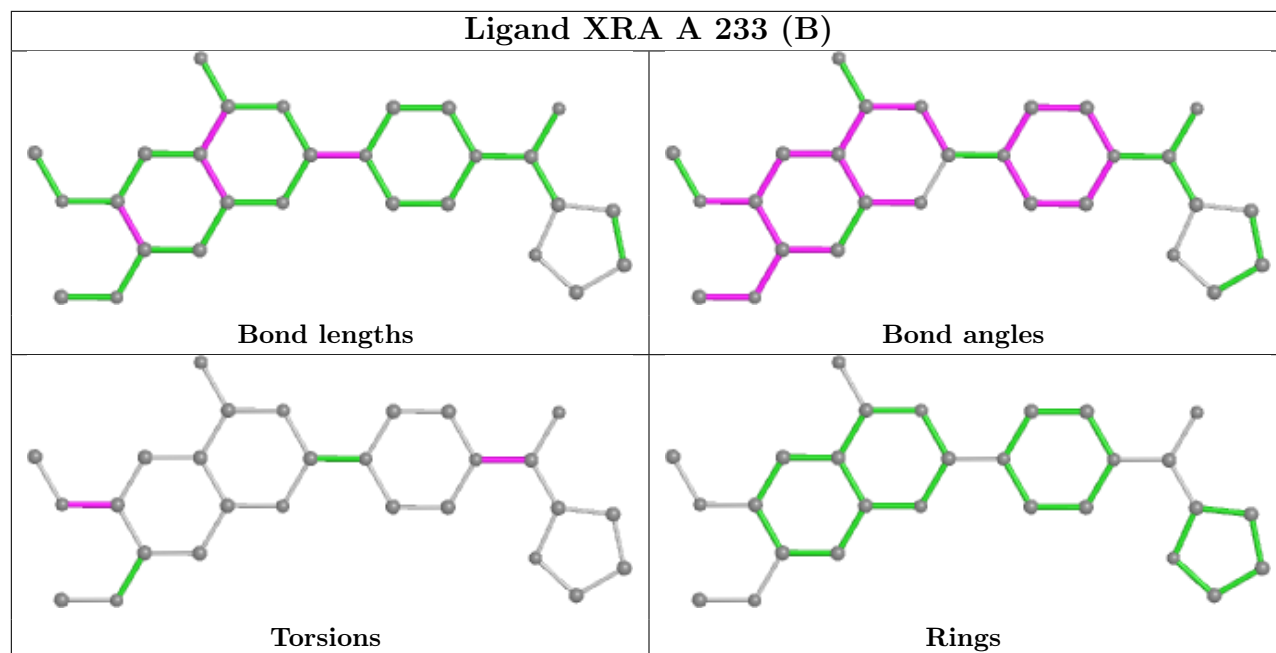
There are no ring outliers.

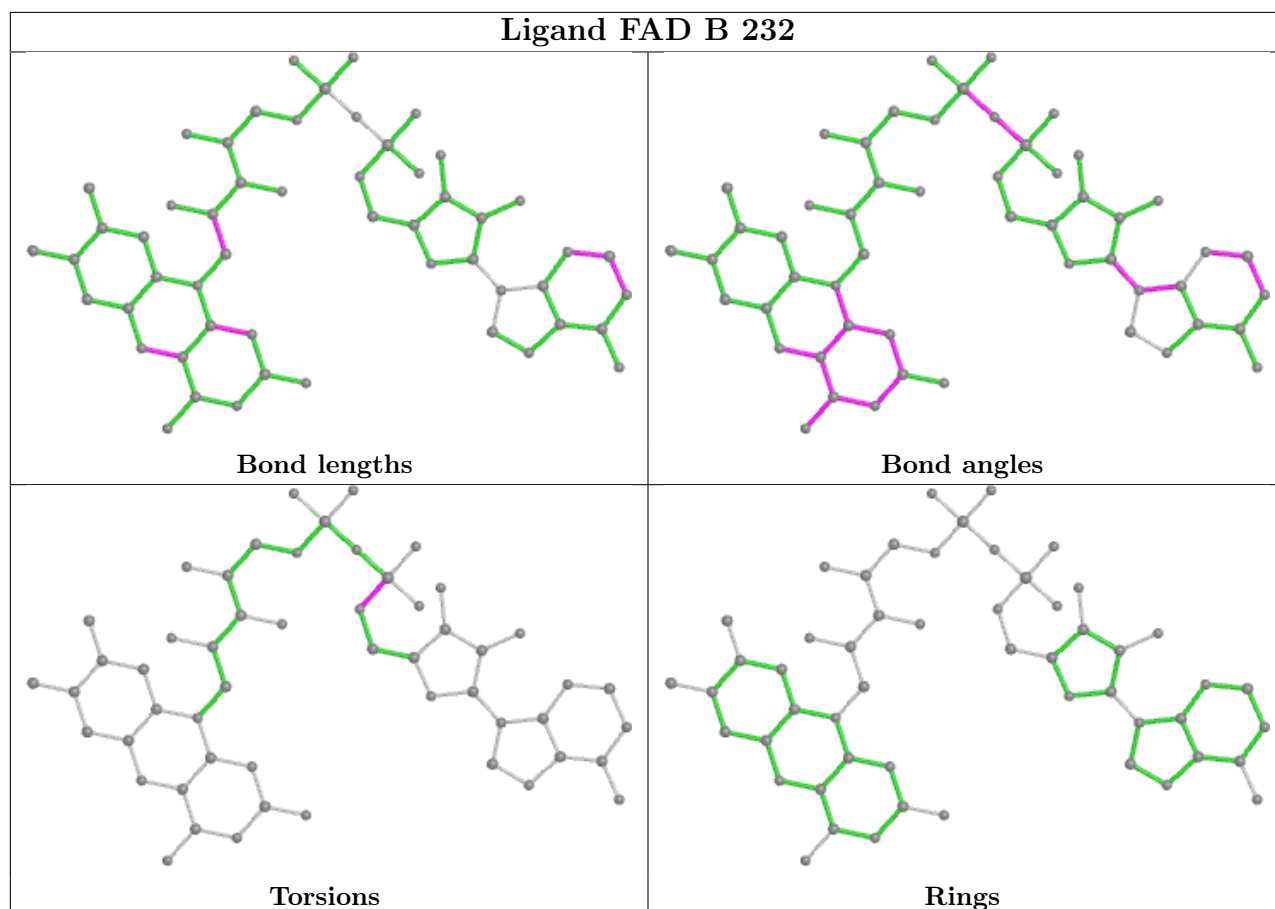
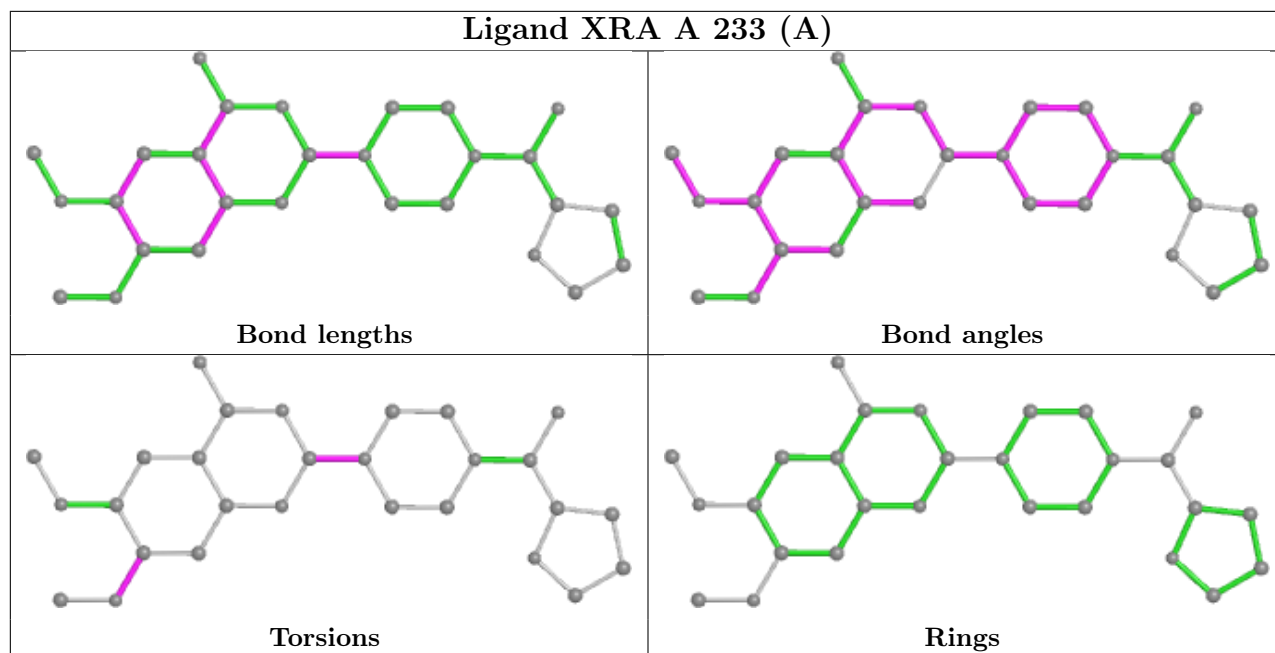
6 monomers are involved in 18 short contacts:

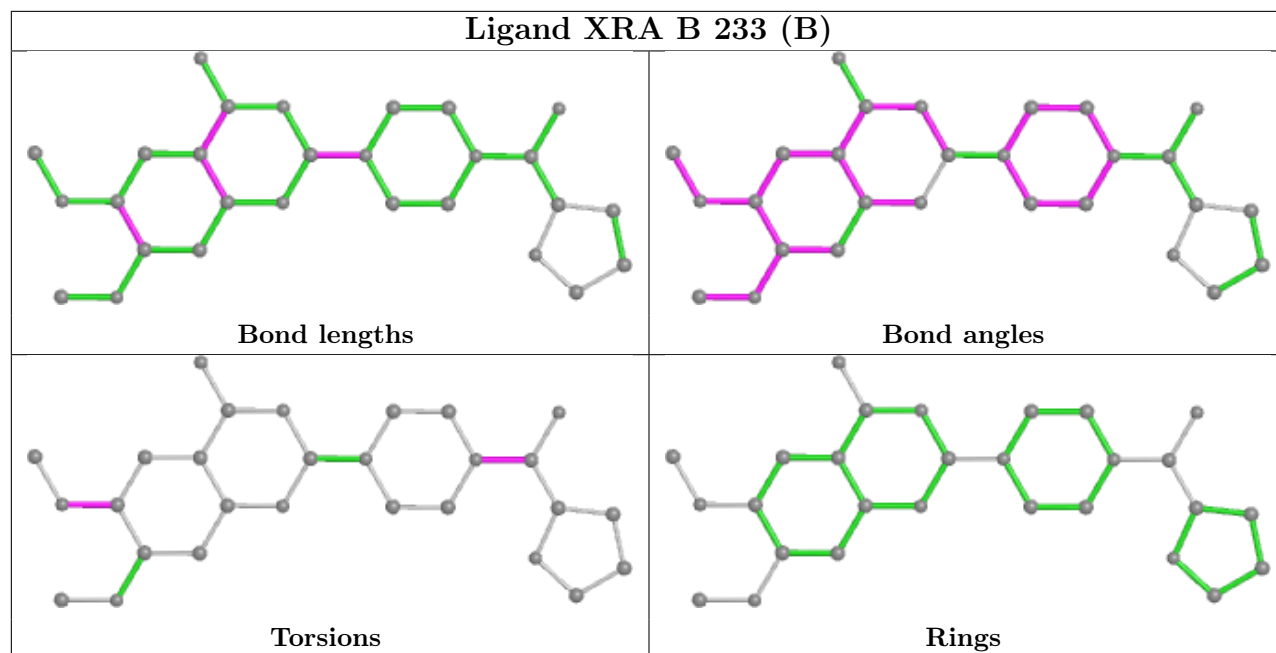
Mol	Chain	Res	Type	Clashes	Symm-Clashes
4	B	233[A]	XRA	4	0
4	A	233[B]	XRA	5	0
3	A	232	FAD	2	0
4	A	233[A]	XRA	5	0
3	B	232	FAD	1	0
4	B	233[B]	XRA	4	0

The following is a two-dimensional graphical depiction of Mogul quality analysis of bond lengths, bond angles, torsion angles, and ring geometry for all instances of the Ligand of Interest. In addition, ligands with molecular weight > 250 and outliers as shown on the validation Tables will also be included. For torsion angles, if less than 5% of the Mogul distribution of torsion angles is within 10 degrees of the torsion angle in question, then that torsion angle is considered an outlier. Any bond that is central to one or more torsion angles identified as an outlier by Mogul will be highlighted in the graph. For rings, the root-mean-square deviation (RMSD) between the ring in question and similar rings identified by Mogul is calculated over all ring torsion angles. If the average RMSD is greater than 60 degrees and the minimal RMSD between the ring in question and any Mogul-identified rings is also greater than 60 degrees, then that ring is considered an outlier. The outliers are highlighted in purple. The color gray indicates Mogul did not find sufficient equivalents in the CSD to analyse the geometry.









5.7 Other polymers [i](#)

There are no such residues in this entry.

5.8 Polymer linkage issues [i](#)

There are no chain breaks in this entry.

6 Fit of model and data

6.1 Protein, DNA and RNA chains

In the following table, the column labelled ‘#RSRZ > 2’ contains the number (and percentage) of RSRZ outliers, followed by percent RSRZ outliers for the chain as percentile scores relative to all X-ray entries and entries of similar resolution. The OWAB column contains the minimum, median, 95th percentile and maximum values of the occupancy-weighted average B-factor per residue. The column labelled ‘Q < 0.9’ lists the number of (and percentage) of residues with an average occupancy less than 0.9.

Mol	Chain	Analysed	<RSRZ>	#RSRZ>2	OWAB(Å ²)	Q<0.9
1	A	227/231 (98%)	0.48	22 (9%) 7 7	8, 23, 43, 50	0
1	B	228/231 (98%)	-0.07	6 (2%) 56 54	8, 18, 35, 44	0
All	All	455/462 (98%)	0.21	28 (6%) 20 20	8, 20, 41, 50	0

All (28) RSRZ outliers are listed below:

Mol	Chain	Res	Type	RSRZ
1	A	195	ALA	5.1
1	A	129	PRO	4.8
1	A	198	GLU	4.2
1	B	63	GLU	4.1
1	A	57	GLY	3.9
1	A	197	GLU	3.8
1	A	128	ILE	3.7
1	A	196	SER	3.5
1	A	153	GLU	3.2
1	A	130	GLY	3.1
1	B	157	LYS	3.0
1	A	63	GLU	3.0
1	A	201	LYS	2.9
1	A	199	GLU	2.9
1	A	133	ASP	2.8
1	A	160	VAL	2.7
1	A	194	ILE	2.7
1	B	198	GLU	2.6
1	A	59	LEU	2.5
1	A	58	THR	2.5
1	A	127	ASP	2.4
1	B	153	GLU	2.4
1	A	158	THR	2.4
1	A	225	HIS	2.4

Continued on next page...

Continued from previous page...

Mol	Chain	Res	Type	RSRZ
1	A	62	PRO	2.4
1	B	158	THR	2.3
1	B	156	THR	2.3
1	A	205	ALA	2.2

6.2 Non-standard residues in protein, DNA, RNA chains [i](#)

There are no non-standard protein/DNA/RNA residues in this entry.

6.3 Carbohydrates [i](#)

There are no monosaccharides in this entry.

6.4 Ligands [i](#)

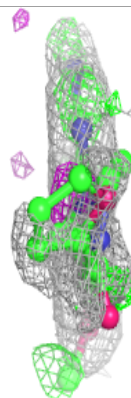
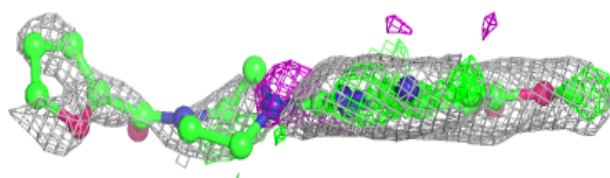
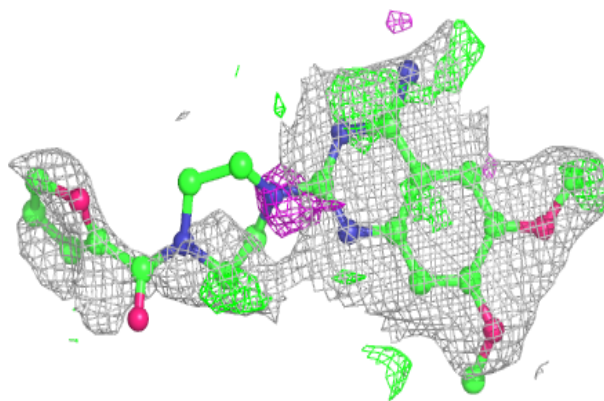
In the following table, the Atoms column lists the number of modelled atoms in the group and the number defined in the chemical component dictionary. The B-factors column lists the minimum, median, 95th percentile and maximum values of B factors of atoms in the group. The column labelled 'Q< 0.9' lists the number of atoms with occupancy less than 0.9.

Mol	Type	Chain	Res	Atoms	RSCC	RSR	B-factors(Å ²)	Q<0.9
4	XRA	B	233[A]	28/28	0.70	0.34	28,31,37,38	28
4	XRA	B	233[B]	28/28	0.70	0.34	37,39,43,43	28
4	XRA	A	233[A]	28/28	0.80	0.27	24,28,36,36	28
4	XRA	A	233[B]	28/28	0.80	0.27	16,23,30,30	28
3	FAD	A	232	53/53	0.93	0.13	12,19,40,41	0
3	FAD	B	232	53/53	0.95	0.10	13,17,32,34	0
2	ZN	A	231	1/1	0.98	0.05	29,29,29,29	0
2	ZN	B	231	1/1	0.99	0.03	19,19,19,19	0

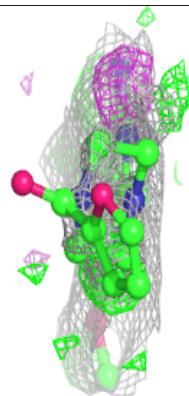
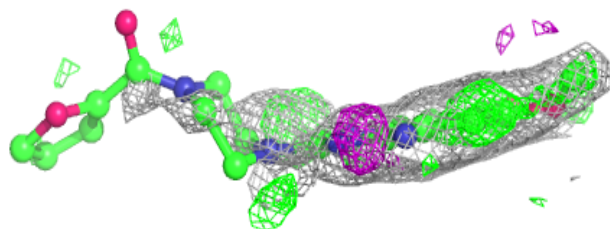
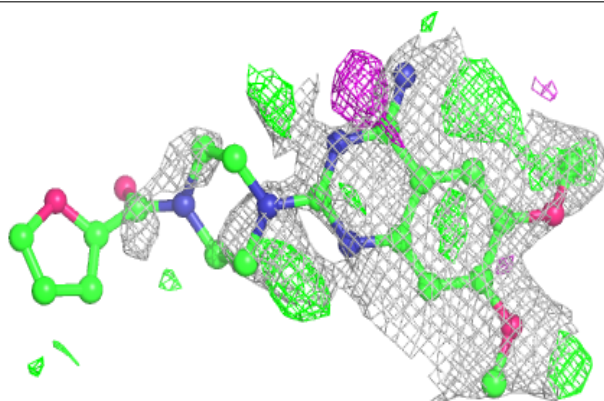
The following is a graphical depiction of the model fit to experimental electron density of all instances of the Ligand of Interest. In addition, ligands with molecular weight > 250 and outliers as shown on the geometry validation Tables will also be included. Each fit is shown from different orientation to approximate a three-dimensional view.

Electron density around XRA B 233 (A):

$2mF_o-DF_c$ (at 0.7 rmsd) in gray
 mF_o-DF_c (at 3 rmsd) in purple (negative)
and green (positive)

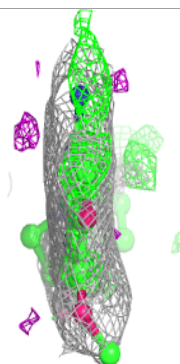
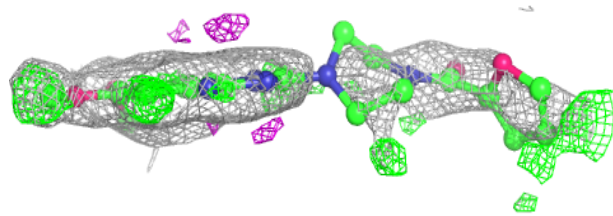
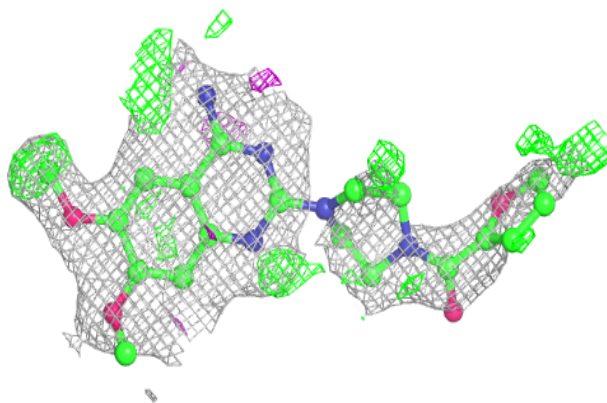
**Electron density around XRA B 233 (B):**

$2mF_o-DF_c$ (at 0.7 rmsd) in gray
 mF_o-DF_c (at 3 rmsd) in purple (negative)
and green (positive)

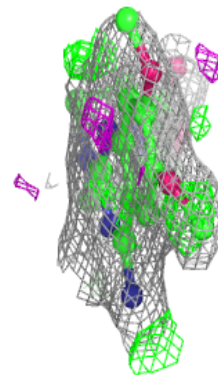
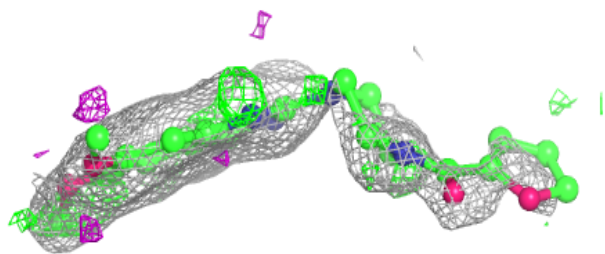
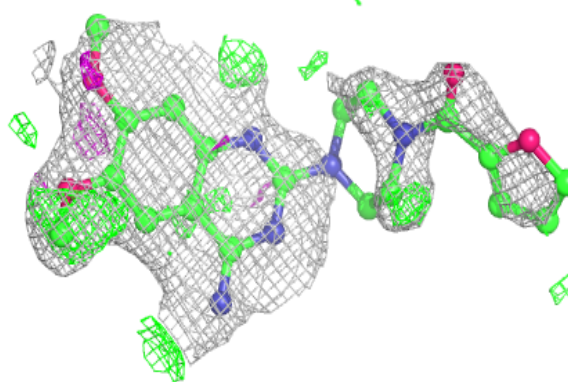


Electron density around XRA A 233 (A):

$2mF_o-DF_c$ (at 0.7 rmsd) in gray
 mF_o-DF_c (at 3 rmsd) in purple (negative)
and green (positive)

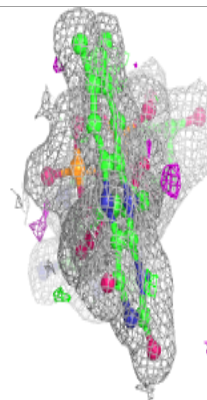
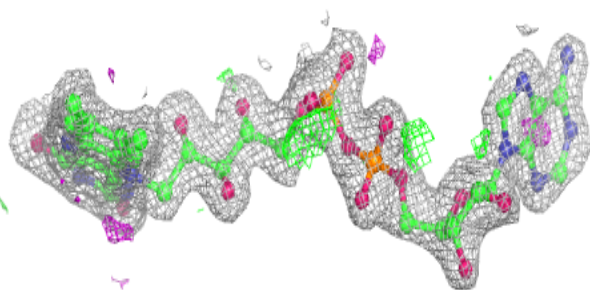
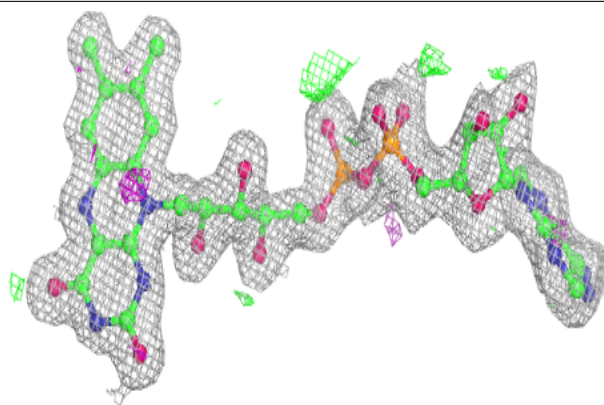
**Electron density around XRA A 233 (B):**

$2mF_o-DF_c$ (at 0.7 rmsd) in gray
 mF_o-DF_c (at 3 rmsd) in purple (negative)
and green (positive)

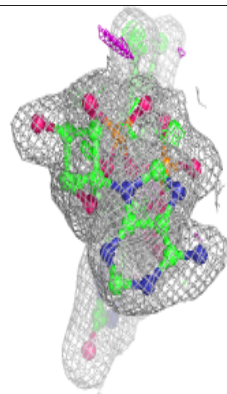
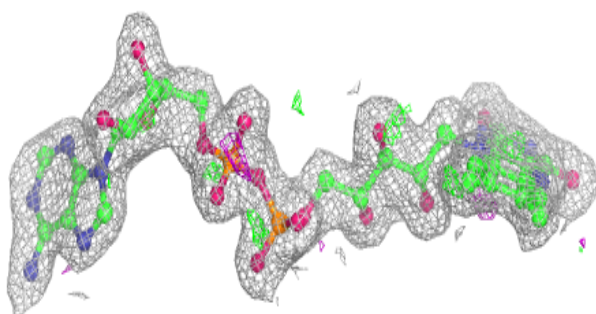
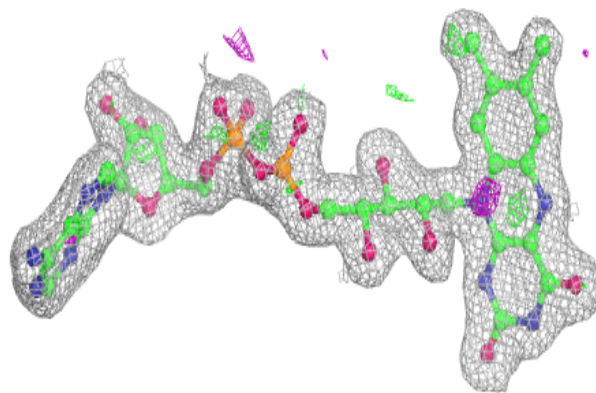


Electron density around FAD A 232:

$2mF_o-DF_c$ (at 0.7 rmsd) in gray
 mF_o-DF_c (at 3 rmsd) in purple (negative)
and green (positive)

**Electron density around FAD B 232:**

$2mF_o-DF_c$ (at 0.7 rmsd) in gray
 mF_o-DF_c (at 3 rmsd) in purple (negative)
and green (positive)



6.5 Other polymers [i](#)

There are no such residues in this entry.