



Full wwPDB X-ray Structure Validation Report ⓘ

Mar 9, 2024 – 05:22 PM EST

PDB ID : 3NFA
Title : Structural basis for a new mechanism of inhibition of HIV integrase identified by fragment screening and structure based design
Authors : Peat, T.S.; Newman, J.; Deadman, J.J.; Rhodes, D.
Deposited on : 2010-06-10
Resolution : 1.95 Å(reported)

This is a Full wwPDB X-ray Structure Validation Report for a publicly released PDB entry.

We welcome your comments at validation@mail.wwpdb.org

A user guide is available at

<https://www.wwpdb.org/validation/2017/XrayValidationReportHelp>

with specific help available everywhere you see the ⓘ symbol.

The types of validation reports are described at

<http://www.wwpdb.org/validation/2017/FAQs#types>.

The following versions of software and data (see [references ⓘ](#)) were used in the production of this report:

MolProbity : 4.02b-467
Mogul : 1.8.5 (274361), CSD as541be (2020)
Xtriage (Phenix) : 1.13
EDS : 2.36
buster-report : 1.1.7 (2018)
Percentile statistics : 20191225.v01 (using entries in the PDB archive December 25th 2019)
Refmac : 5.8.0158
CCP4 : 7.0.044 (Gargrove)
Ideal geometry (proteins) : Engh & Huber (2001)
Ideal geometry (DNA, RNA) : Parkinson et al. (1996)
Validation Pipeline (wwPDB-VP) : 2.36

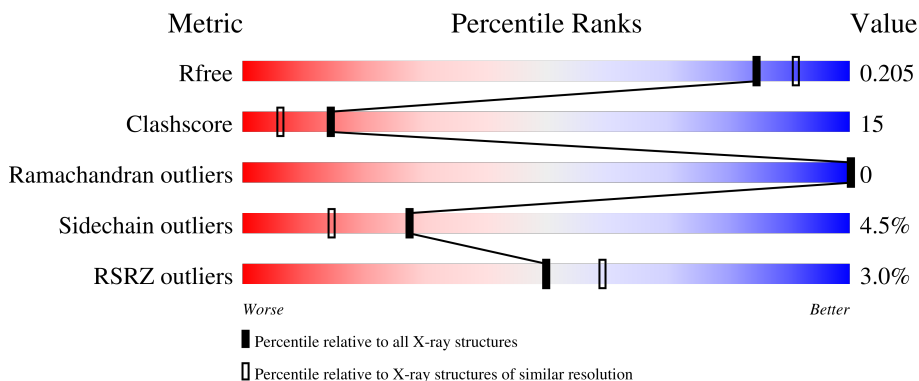
1 Overall quality at a glance

The following experimental techniques were used to determine the structure:

X-RAY DIFFRACTION

The reported resolution of this entry is 1.95 Å.

Percentile scores (ranging between 0-100) for global validation metrics of the entry are shown in the following graphic. The table shows the number of entries on which the scores are based.



Metric	Whole archive (#Entries)	Similar resolution (#Entries, resolution range(Å))
R_{free}	130704	2580 (1.96-1.96)
Clashscore	141614	2705 (1.96-1.96)
Ramachandran outliers	138981	2678 (1.96-1.96)
Sidechain outliers	138945	2678 (1.96-1.96)
RSRZ outliers	127900	2539 (1.96-1.96)

The table below summarises the geometric issues observed across the polymeric chains and their fit to the electron density. The red, orange, yellow and green segments of the lower bar indicate the fraction of residues that contain outliers for ≥ 3 , 2, 1 and 0 types of geometric quality criteria respectively. A grey segment represents the fraction of residues that are not modelled. The numeric value for each fraction is indicated below the corresponding segment, with a dot representing fractions $\leq 5\%$. The upper red bar (where present) indicates the fraction of residues that have poor fit to the electron density. The numeric value is given above the bar.

Mol	Chain	Length	Quality of chain
1	A	183	 2% 67% 13% • 19%
1	B	183	 3% 67% 13% • 19%

The following table lists non-polymeric compounds, carbohydrate monomers and non-standard residues in protein, DNA, RNA chains that are outliers for geometric or electron-density-fit criteria:

Mol	Type	Chain	Res	Chirality	Geometry	Clashes	Electron density
3	CBJ	A	213	-	-	X	-
3	CBJ	B	222	-	-	X	-
4	ACY	A	1	-	-	X	-
4	ACY	A	214	-	-	X	-
4	ACY	A	215	-	-	X	-
4	ACY	A	3	-	-	X	-
4	ACY	B	2	-	-	X	-

2 Entry composition [i](#)

There are 5 unique types of molecules in this entry. The entry contains 2724 atoms, of which 0 are hydrogens and 0 are deuteriums.

In the tables below, the ZeroOcc column contains the number of atoms modelled with zero occupancy, the AltConf column contains the number of residues with at least one atom in alternate conformation and the Trace column contains the number of residues modelled with at most 2 atoms.

- Molecule 1 is a protein called Integrase.

Mol	Chain	Residues	Atoms					ZeroOcc	AltConf	Trace
			Total	C	N	O	S			
1	A	149	1237	794	212	227	4	0	12	0
1	B	149	1216	781	208	223	4	0	10	0

There are 46 discrepancies between the modelled and reference sequences:

Chain	Residue	Modelled	Actual	Comment	Reference
A	30	MET	-	expression tag	UNP Q76353
A	31	GLY	-	expression tag	UNP Q76353
A	32	SER	-	expression tag	UNP Q76353
A	33	SER	-	expression tag	UNP Q76353
A	34	HIS	-	expression tag	UNP Q76353
A	35	HIS	-	expression tag	UNP Q76353
A	36	HIS	-	expression tag	UNP Q76353
A	37	HIS	-	expression tag	UNP Q76353
A	38	HIS	-	expression tag	UNP Q76353
A	39	HIS	-	expression tag	UNP Q76353
A	40	SER	-	expression tag	UNP Q76353
A	41	SER	-	expression tag	UNP Q76353
A	42	GLY	-	expression tag	UNP Q76353
A	43	LEU	-	expression tag	UNP Q76353
A	44	VAL	-	expression tag	UNP Q76353
A	45	PRO	-	expression tag	UNP Q76353
A	46	ARG	-	expression tag	UNP Q76353
A	47	GLY	-	expression tag	UNP Q76353
A	48	SER	-	expression tag	UNP Q76353
A	49	HIS	-	expression tag	UNP Q76353
A	56	SER	CYS	engineered mutation	UNP Q76353
A	139	ASP	PHE	engineered mutation	UNP Q76353
A	185	HIS	PHE	engineered mutation	UNP Q76353
B	30	MET	-	expression tag	UNP Q76353
B	31	GLY	-	expression tag	UNP Q76353

Continued on next page...

Continued from previous page...

Chain	Residue	Modelled	Actual	Comment	Reference
B	32	SER	-	expression tag	UNP Q76353
B	33	SER	-	expression tag	UNP Q76353
B	34	HIS	-	expression tag	UNP Q76353
B	35	HIS	-	expression tag	UNP Q76353
B	36	HIS	-	expression tag	UNP Q76353
B	37	HIS	-	expression tag	UNP Q76353
B	38	HIS	-	expression tag	UNP Q76353
B	39	HIS	-	expression tag	UNP Q76353
B	40	SER	-	expression tag	UNP Q76353
B	41	SER	-	expression tag	UNP Q76353
B	42	GLY	-	expression tag	UNP Q76353
B	43	LEU	-	expression tag	UNP Q76353
B	44	VAL	-	expression tag	UNP Q76353
B	45	PRO	-	expression tag	UNP Q76353
B	46	ARG	-	expression tag	UNP Q76353
B	47	GLY	-	expression tag	UNP Q76353
B	48	SER	-	expression tag	UNP Q76353
B	49	HIS	-	expression tag	UNP Q76353
B	56	SER	CYS	engineered mutation	UNP Q76353
B	139	ASP	PHE	engineered mutation	UNP Q76353
B	185	HIS	PHE	engineered mutation	UNP Q76353

- Molecule 2 is SULFATE ION (three-letter code: SO₄) (formula: O₄S).



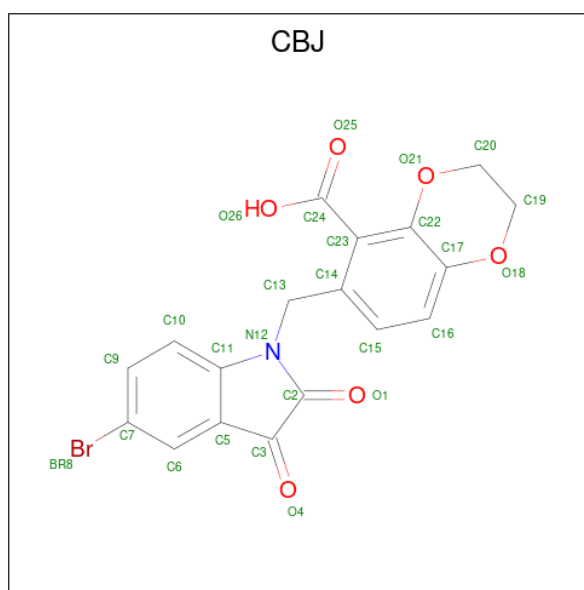
Mol	Chain	Residues	Atoms			ZeroOcc	AltConf
			Total	O	S		
2	A	1	5	4	1	0	0

Continued on next page...

Continued from previous page...

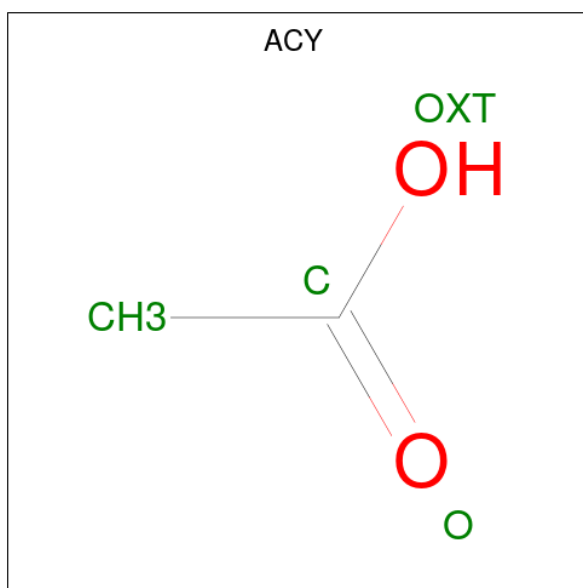
Mol	Chain	Residues	Atoms			ZeroOcc	AltConf
2	A	1	Total	O	S	0	0
			5	4	1		
2	A	1	Total	O	S	0	0
			5	4	1		
2	A	1	Total	O	S	0	0
			5	4	1		
2	B	1	Total	O	S	0	0
			5	4	1		
2	B	1	Total	O	S	0	0
			5	4	1		
2	B	1	Total	O	S	0	0
			5	4	1		

- Molecule 3 is 6-[(5-bromo-2,3-dioxo-2,3-dihydro-1H-indol-1-yl)methyl]-2,3-dihydro-1,4-benzodioxine-5-carboxylic acid (three-letter code: CBJ) (formula: C₁₈H₁₂BrNO₆).



Mol	Chain	Residues	Atoms					ZeroOcc	AltConf
3	A	1	Total	Br	C	N	O	0	0
			26	1	18	1	6		
3	A	1	Total	Br	C	N	O	0	0
			26	1	18	1	6		
3	B	1	Total	Br	C	N	O	0	0
			26	1	18	1	6		
3	B	1	Total	Br	C	N	O	0	0
			26	1	18	1	6		

- Molecule 4 is ACETIC ACID (three-letter code: ACY) (formula: C₂H₄O₂).



Mol	Chain	Residues	Atoms	ZeroOcc	AltConf
4	A	1	Total C O 4 2 2	0	0
4	A	1	Total C O 4 2 2	0	0
4	A	1	Total C O 4 2 2	0	0
4	A	1	Total C O 4 2 2	0	0
4	B	1	Total C O 4 2 2	0	0

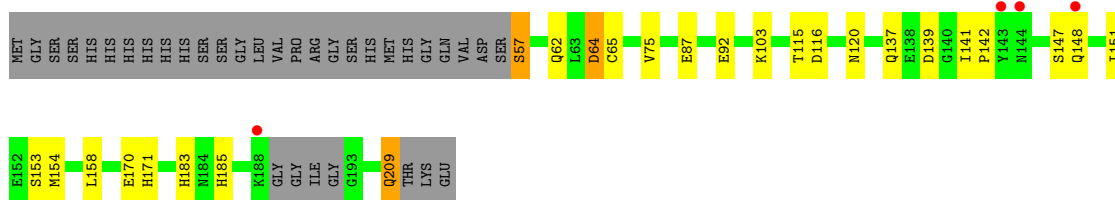
- Molecule 5 is water.

Mol	Chain	Residues	Atoms	ZeroOcc	AltConf
5	A	51	Total O 51 51	0	0
5	B	56	Total O 56 56	0	0

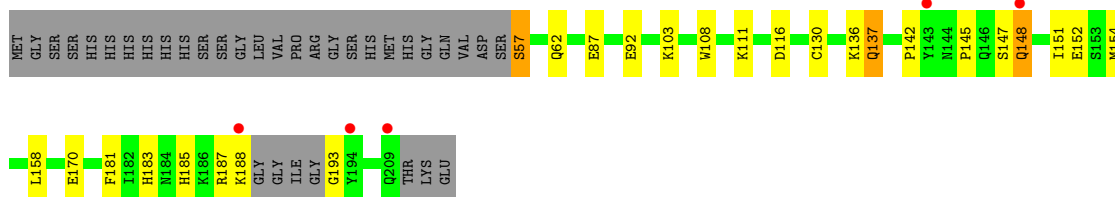
3 Residue-property plots [i](#)

These plots are drawn for all protein, RNA, DNA and oligosaccharide chains in the entry. The first graphic for a chain summarises the proportions of the various outlier classes displayed in the second graphic. The second graphic shows the sequence view annotated by issues in geometry and electron density. Residues are color-coded according to the number of geometric quality criteria for which they contain at least one outlier: green = 0, yellow = 1, orange = 2 and red = 3 or more. A red dot above a residue indicates a poor fit to the electron density ($RSRZ > 2$). Stretches of 2 or more consecutive residues without any outlier are shown as a green connector. Residues present in the sample, but not in the model, are shown in grey.

- Molecule 1: Integrase



- Molecule 1: Integrase



4 Data and refinement statistics i

Property	Value	Source
Space group	P 31	Depositor
Cell constants a, b, c, α , β , γ	71.47Å 71.47Å 66.83Å 90.00° 90.00° 120.00°	Depositor
Resolution (Å)	18.91 – 1.95 18.91 – 1.95	Depositor EDS
% Data completeness (in resolution range)	100.0 (18.91-1.95) 100.0 (18.91-1.95)	Depositor EDS
R_{merge}	0.05	Depositor
R_{sym}	(Not available)	Depositor
$\langle I/\sigma(I) \rangle$ ¹	2.85 (at 1.94Å)	Xtriage
Refinement program	REFMAC 5.6.0062	Depositor
R, R_{free}	0.162 , 0.204 0.162 , 0.205	Depositor DCC
R_{free} test set	1407 reflections (5.06%)	wwPDB-VP
Wilson B-factor (Å ²)	29.5	Xtriage
Anisotropy	0.021	Xtriage
Bulk solvent k_{sol} (e/Å ³), B_{sol} (Å ²)	0.31 , 29.7	EDS
L-test for twinning ²	$\langle L \rangle = 0.50$, $\langle L^2 \rangle = 0.33$	Xtriage
Estimated twinning fraction	0.030 for -h,-k,l 0.488 for h,-h-k,-l 0.032 for -k,-h,-l	Xtriage
F_o, F_c correlation	0.97	EDS
Total number of atoms	2724	wwPDB-VP
Average B, all atoms (Å ²)	35.0	wwPDB-VP

Xtriage's analysis on translational NCS is as follows: *The largest off-origin peak in the Patterson function is 9.33% of the height of the origin peak. No significant pseudotranslation is detected.*

¹Intensities estimated from amplitudes.

²Theoretical values of $\langle |L| \rangle$, $\langle L^2 \rangle$ for acentric reflections are 0.5, 0.333 respectively for untwinned datasets, and 0.375, 0.2 for perfectly twinned datasets.

5 Model quality [i](#)

5.1 Standard geometry [i](#)

Bond lengths and bond angles in the following residue types are not validated in this section: CBJ, ACY, SO4

The Z score for a bond length (or angle) is the number of standard deviations the observed value is removed from the expected value. A bond length (or angle) with $|Z| > 5$ is considered an outlier worth inspection. RMSZ is the root-mean-square of all Z scores of the bond lengths (or angles).

Mol	Chain	Bond lengths		Bond angles	
		RMSZ	# Z >5	RMSZ	# Z >5
1	A	1.01	1/1283 (0.1%)	0.85	0/1740
1	B	1.01	1/1264 (0.1%)	0.88	0/1712
All	All	1.01	2/2547 (0.1%)	0.86	0/3452

All (2) bond length outliers are listed below:

Mol	Chain	Res	Type	Atoms	Z	Observed(Å)	Ideal(Å)
1	A	65	CYS	CB-SG	-5.61	1.72	1.81
1	B	130	CYS	CB-SG	5.07	1.90	1.82

There are no bond angle outliers.

There are no chirality outliers.

There are no planarity outliers.

5.2 Too-close contacts [i](#)

In the following table, the Non-H and H(model) columns list the number of non-hydrogen atoms and hydrogen atoms in the chain respectively. The H(added) column lists the number of hydrogen atoms added and optimized by MolProbity. The Clashes column lists the number of clashes within the asymmetric unit, whereas Symm-Clashes lists symmetry-related clashes.

Mol	Chain	Non-H	H(model)	H(added)	Clashes	Symm-Clashes
1	A	1237	0	1262	39	0
1	B	1216	0	1251	35	0
2	A	20	0	0	1	0
2	B	20	0	0	0	0
3	A	52	0	22	10	0
3	B	52	0	22	9	0
4	A	16	0	12	18	0

Continued on next page...

Continued from previous page...

Mol	Chain	Non-H	H(model)	H(added)	Clashes	Symm-Clashes
4	B	4	0	3	4	0
5	A	51	0	0	5	0
5	B	56	0	0	1	0
All	All	2724	0	2572	80	0

The all-atom clashscore is defined as the number of clashes found per 1000 atoms (including hydrogen atoms). The all-atom clashscore for this structure is 15.

All (80) close contacts within the same asymmetric unit are listed below, sorted by their clash magnitude.

Atom-1	Atom-2	Interatomic distance (Å)	Clash overlap (Å)
4:A:1:ACY:H3	1:B:185:HIS:NE2	1.65	1.10
1:A:62[B]:GLN:HE21	1:A:151:ILE:HD11	1.10	1.08
4:A:1:ACY:H3	1:B:185:HIS:CE1	1.89	1.07
1:A:62[B]:GLN:NE2	1:A:151:ILE:HD11	1.74	1.03
4:A:214:ACY:H2	4:A:215:ACY:H1	1.39	1.01
1:B:62[B]:GLN:NE2	1:B:151:ILE:HD11	1.78	0.97
1:A:158[A]:LEU:HG	3:A:213:CBJ:BR8	2.19	0.97
1:A:185:HIS:CE1	4:B:2:ACY:H3	2.02	0.95
3:A:213:CBJ:N12	3:A:213:CBJ:C24	2.30	0.93
1:B:187:ARG:HD2	1:B:193:GLY:O	1.69	0.93
1:A:103[A]:LYS:HZ3	4:A:215:ACY:H2	1.38	0.89
1:A:87[B]:GLU:OE1	4:A:214:ACY:OXT	1.91	0.89
1:A:185:HIS:NE2	4:B:2:ACY:H3	1.91	0.85
4:A:1:ACY:OXT	4:A:3:ACY:O	1.95	0.83
1:B:158[A]:LEU:HG	3:B:222:CBJ:BR8	2.34	0.82
4:A:215:ACY:O	1:B:87[B]:GLU:OE1	2.01	0.78
4:A:1:ACY:C	4:A:3:ACY:O	2.33	0.75
4:A:214:ACY:CH3	4:A:215:ACY:H1	2.15	0.75
4:A:3:ACY:CH3	5:A:232:HOH:O	2.38	0.71
1:A:209:GLN:NE2	5:A:219:HOH:O	2.23	0.70
3:B:222:CBJ:N12	3:B:222:CBJ:C24	2.53	0.69
1:A:142:PRO:HG3	1:A:148:GLN:HG3	1.75	0.68
1:A:103[A]:LYS:NZ	4:A:215:ACY:H2	2.09	0.68
1:A:87[B]:GLU:OE2	1:B:103[B]:LYS:HE3	1.94	0.67
1:B:62[B]:GLN:HE21	1:B:151:ILE:HD11	1.58	0.67
1:A:141[B]:ILE:HD12	1:A:142:PRO:HD2	1.76	0.66
1:B:142:PRO:HB3	1:B:147:SER:HB2	1.78	0.65
4:A:3:ACY:H3	5:A:232:HOH:O	1.95	0.65
1:A:103[B]:LYS:NZ	1:B:87[B]:GLU:OE2	2.30	0.65
3:A:213:CBJ:N12	3:A:213:CBJ:O26	2.30	0.63

Continued on next page...

Continued from previous page...

Atom-1	Atom-2	Interatomic distance (Å)	Clash overlap (Å)
1:A:103[B]:LYS:HE3	1:B:87[B]:GLU:OE2	1.98	0.62
1:A:185:HIS:CE1	4:B:2:ACY:CH3	2.81	0.62
1:A:141[B]:ILE:HD12	1:A:142:PRO:CD	2.31	0.60
1:A:103[B]:LYS:CE	1:B:87[B]:GLU:OE2	2.50	0.59
1:B:154:MET:HG3	3:B:222:CBJ:C9	2.34	0.57
4:A:1:ACY:CH3	1:B:185:HIS:NE2	2.56	0.56
4:A:3:ACY:H2	5:A:232:HOH:O	2.04	0.55
1:B:158[A]:LEU:CG	3:B:222:CBJ:BR8	3.09	0.55
1:A:183:HIS:CE1	3:A:213:CBJ:C9	2.89	0.55
1:B:187:ARG:CD	1:B:193:GLY:O	2.51	0.55
1:A:64:ASP:HB3	1:A:75[B]:VAL:HG13	1.89	0.54
1:B:111:LYS:HE2	1:B:136[A]:LYS:HZ2	1.72	0.54
1:B:145:PRO:HA	1:B:148:GLN:HE22	1.71	0.54
1:A:64:ASP:HB3	1:A:75[B]:VAL:CG1	2.39	0.53
1:A:142:PRO:HB3	1:A:147:SER:HB2	1.91	0.52
1:A:171:HIS:HD2	2:A:4:SO4:O3	1.93	0.52
1:A:171:HIS:CE1	3:A:235:CBJ:H20A	2.45	0.51
1:B:142:PRO:CB	1:B:147:SER:HB2	2.41	0.51
1:B:111:LYS:HE2	1:B:136[A]:LYS:NZ	2.26	0.51
3:A:213:CBJ:O26	3:A:213:CBJ:C11	2.58	0.50
1:B:57:SER:N	5:B:219:HOH:O	2.44	0.50
1:B:154:MET:HG3	3:B:222:CBJ:C7	2.42	0.50
4:A:1:ACY:H3	1:B:185:HIS:HE2	1.66	0.49
1:A:115[A]:THR:HG21	1:A:137:GLN:OE1	2.12	0.49
1:A:87[B]:GLU:OE2	1:B:103[B]:LYS:CE	2.60	0.48
1:A:103[B]:LYS:HZ2	4:A:215:ACY:H2	1.77	0.48
1:B:158[A]:LEU:CD2	3:B:222:CBJ:BR8	3.16	0.48
1:A:92[A]:GLU:OE2	1:A:116:ASP:OD2	2.31	0.48
1:A:139:ASP:OD1	1:A:141[B]:ILE:CG2	2.61	0.48
1:B:181:PHE:O	1:B:185:HIS:HD2	1.95	0.48
3:B:222:CBJ:N12	3:B:222:CBJ:O26	2.46	0.48
1:A:171:HIS:CE1	3:A:235:CBJ:C20	2.98	0.47
1:A:92[B]:GLU:OE2	1:A:120:ASN:ND2	2.48	0.47
1:A:154:MET:HG3	3:A:213:CBJ:C7	2.45	0.47
1:B:92:GLU:OE2	1:B:116:ASP:OD2	2.33	0.47
1:A:139:ASP:OD1	1:A:141[B]:ILE:HG22	2.15	0.46
3:A:213:CBJ:C24	3:A:213:CBJ:C2	2.94	0.46
1:B:183:HIS:CE1	3:B:222:CBJ:C9	2.99	0.46
1:A:103[B]:LYS:HZ1	1:B:103[B]:LYS:HZ3	1.64	0.46
1:B:137:GLN:HE21	1:B:137:GLN:HB3	1.64	0.43
1:A:103[B]:LYS:NZ	1:B:103[B]:LYS:HZ3	2.17	0.42

Continued on next page...

Continued from previous page...

Atom-1	Atom-2	Interatomic distance (Å)	Clash overlap (Å)
1:A:57:SER:N	5:A:226:HOH:O	2.52	0.42
1:A:154:MET:HG3	3:A:213:CBJ:C9	2.50	0.42
1:A:87[B]:GLU:OE1	4:A:214:ACY:C	2.65	0.42
4:A:214:ACY:H2	4:A:215:ACY:CH3	2.28	0.42
1:A:64:ASP:OD2	1:A:75[B]:VAL:HG11	2.19	0.42
1:B:108:TRP:C	4:B:2:ACY:H2	2.40	0.41
1:B:158[A]:LEU:HD23	3:B:222:CBJ:BR8	2.76	0.41
1:A:103[B]:LYS:NZ	1:B:103[B]:LYS:NZ	2.68	0.41
1:B:158[A]:LEU:HD23	1:B:158[A]:LEU:HA	1.92	0.40

There are no symmetry-related clashes.

5.3 Torsion angles [i](#)

5.3.1 Protein backbone [i](#)

In the following table, the Percentiles column shows the percent Ramachandran outliers of the chain as a percentile score with respect to all X-ray entries followed by that with respect to entries of similar resolution.

The Analysed column shows the number of residues for which the backbone conformation was analysed, and the total number of residues.

Mol	Chain	Analysed	Favoured	Allowed	Outliers	Percentiles	
1	A	157/183 (86%)	153 (98%)	4 (2%)	0	100	100
1	B	155/183 (85%)	152 (98%)	3 (2%)	0	100	100
All	All	312/366 (85%)	305 (98%)	7 (2%)	0	100	100

There are no Ramachandran outliers to report.

5.3.2 Protein sidechains [i](#)

In the following table, the Percentiles column shows the percent sidechain outliers of the chain as a percentile score with respect to all X-ray entries followed by that with respect to entries of similar resolution.

The Analysed column shows the number of residues for which the sidechain conformation was analysed, and the total number of residues.

Mol	Chain	Analysed	Rotameric	Outliers	Percentiles	
1	A	135/150 (90%)	130 (96%)	5 (4%)	34	22
1	B	133/150 (89%)	127 (96%)	6 (4%)	27	15
All	All	268/300 (89%)	257 (96%)	11 (4%)	27	18

All (11) residues with a non-rotameric sidechain are listed below:

Mol	Chain	Res	Type
1	A	57	SER
1	A	64	ASP
1	A	153	SER
1	A	170	GLU
1	A	209	GLN
1	B	57	SER
1	B	137	GLN
1	B	148	GLN
1	B	152	GLU
1	B	170	GLU
1	B	188	LYS

Sometimes sidechains can be flipped to improve hydrogen bonding and reduce clashes. All (6) such sidechains are listed below:

Mol	Chain	Res	Type
1	A	95	GLN
1	A	171	HIS
1	B	137	GLN
1	B	148	GLN
1	B	171	HIS
1	B	185	HIS

5.3.3 RNA [i](#)

There are no RNA molecules in this entry.

5.4 Non-standard residues in protein, DNA, RNA chains [i](#)

There are no non-standard protein/DNA/RNA residues in this entry.

5.5 Carbohydrates [i](#)

There are no monosaccharides in this entry.

5.6 Ligand geometry [i](#)

17 ligands are modelled in this entry.

In the following table, the Counts columns list the number of bonds (or angles) for which Mogul statistics could be retrieved, the number of bonds (or angles) that are observed in the model and the number of bonds (or angles) that are defined in the Chemical Component Dictionary. The Link column lists molecule types, if any, to which the group is linked. The Z score for a bond length (or angle) is the number of standard deviations the observed value is removed from the expected value. A bond length (or angle) with $|Z| > 2$ is considered an outlier worth inspection. RMSZ is the root-mean-square of all Z scores of the bond lengths (or angles).

Mol	Type	Chain	Res	Link	Bond lengths			Bond angles		
					Counts	RMSZ	# Z > 2	Counts	RMSZ	# Z > 2
3	CBJ	A	213	-	29,29,29	1.78	7 (24%)	42,43,43	2.89	16 (38%)
2	SO4	B	6	-	4,4,4	0.15	0	6,6,6	0.52	0
2	SO4	A	5	-	4,4,4	0.37	0	6,6,6	0.44	0
3	CBJ	A	235	-	29,29,29	2.23	7 (24%)	42,43,43	4.88	27 (64%)
4	ACY	A	215	-	3,3,3	0.83	0	3,3,3	0.83	0
2	SO4	B	1	-	4,4,4	0.30	0	6,6,6	0.47	0
4	ACY	A	3	-	3,3,3	0.80	0	3,3,3	1.13	0
4	ACY	B	2	-	3,3,3	1.30	0	3,3,3	1.19	0
2	SO4	A	4	-	4,4,4	0.14	0	6,6,6	0.34	0
4	ACY	A	214	-	3,3,3	0.69	0	3,3,3	1.15	0
2	SO4	A	7	-	4,4,4	0.39	0	6,6,6	0.28	0
3	CBJ	B	222	-	29,29,29	1.42	4 (13%)	42,43,43	2.66	18 (42%)
3	CBJ	B	245	-	29,29,29	2.30	7 (24%)	42,43,43	4.80	25 (59%)
2	SO4	B	8	-	4,4,4	0.44	0	6,6,6	0.48	0
4	ACY	A	1	-	3,3,3	1.33	0	3,3,3	1.36	0
2	SO4	A	2	-	4,4,4	0.23	0	6,6,6	0.31	0
2	SO4	B	3	-	4,4,4	0.26	0	6,6,6	0.51	0

In the following table, the Chirals column lists the number of chiral outliers, the number of chiral centers analysed, the number of these observed in the model and the number defined in the Chemical Component Dictionary. Similar counts are reported in the Torsion and Rings columns. '-' means no outliers of that kind were identified.

Mol	Type	Chain	Res	Link	Chirals	Torsions	Rings
3	CBJ	A	213	-	-	3/8/31/31	0/4/4/4

Continued on next page...

Continued from previous page...

Mol	Type	Chain	Res	Link	Chirals	Torsions	Rings
3	CBJ	A	235	-	-	3/8/31/31	0/4/4/4
3	CBJ	B	222	-	-	3/8/31/31	0/4/4/4
3	CBJ	B	245	-	-	3/8/31/31	0/4/4/4

All (25) bond length outliers are listed below:

Mol	Chain	Res	Type	Atoms	Z	Observed(Å)	Ideal(Å)
3	B	245	CBJ	C2-C3	-7.97	1.43	1.55
3	A	235	CBJ	C2-C3	-7.61	1.44	1.55
3	A	235	CBJ	C13-N12	-5.19	1.38	1.46
3	B	245	CBJ	C13-N12	-5.09	1.38	1.46
3	A	213	CBJ	C2-C3	-4.75	1.48	1.55
3	A	213	CBJ	C5-C11	-4.02	1.35	1.41
3	B	245	CBJ	C2-N12	3.94	1.44	1.37
3	B	222	CBJ	C2-C3	-3.67	1.50	1.55
3	A	235	CBJ	C2-N12	3.57	1.43	1.37
3	B	245	CBJ	C6-C5	-3.40	1.34	1.39
3	A	235	CBJ	C5-C11	-3.19	1.36	1.41
3	A	235	CBJ	C6-C5	-3.16	1.34	1.39
3	B	245	CBJ	C5-C11	-3.16	1.36	1.41
3	B	222	CBJ	C5-C11	-2.88	1.37	1.41
3	B	222	CBJ	O21-C22	2.78	1.42	1.37
3	A	213	CBJ	C5-C3	-2.75	1.42	1.48
3	B	222	CBJ	C2-N12	2.28	1.41	1.37
3	B	245	CBJ	C13-C14	-2.20	1.47	1.51
3	A	213	CBJ	C23-C24	-2.19	1.45	1.50
3	A	235	CBJ	C13-C14	-2.18	1.47	1.51
3	A	235	CBJ	C10-C9	2.11	1.42	1.38
3	A	213	CBJ	C13-C14	-2.08	1.48	1.51
3	A	213	CBJ	C13-N12	-2.08	1.43	1.46
3	B	245	CBJ	C10-C9	2.03	1.42	1.38
3	A	213	CBJ	C6-C5	-2.00	1.36	1.39

All (86) bond angle outliers are listed below:

Mol	Chain	Res	Type	Atoms	Z	Observed(°)	Ideal(°)
3	B	245	CBJ	O1-C2-C3	-15.85	113.58	126.54
3	A	235	CBJ	O1-C2-C3	-14.60	114.60	126.54
3	A	235	CBJ	BR8-C7-C6	-14.16	99.58	119.27
3	B	245	CBJ	BR8-C7-C6	-13.10	101.06	119.27
3	A	235	CBJ	BR8-C7-C9	10.75	134.92	119.30

Continued on next page...

Continued from previous page...

Mol	Chain	Res	Type	Atoms	Z	Observed(°)	Ideal(°)
3	B	245	CBJ	BR8-C7-C9	10.65	134.77	119.30
3	B	245	CBJ	O1-C2-N12	10.13	143.33	125.88
3	A	235	CBJ	O1-C2-N12	9.86	142.87	125.88
3	A	235	CBJ	C13-N12-C11	-8.17	111.70	124.83
3	A	213	CBJ	O1-C2-C3	-8.10	119.92	126.54
3	A	213	CBJ	C19-O18-C17	-7.73	100.32	113.65
3	B	245	CBJ	C13-N12-C11	-7.34	113.04	124.83
3	B	222	CBJ	O4-C3-C2	6.81	129.13	123.72
3	A	235	CBJ	C11-C5-C3	6.25	113.12	107.71
3	B	222	CBJ	O1-C2-C3	-6.11	121.55	126.54
3	B	245	CBJ	C11-C5-C3	6.08	112.98	107.71
3	B	245	CBJ	C13-C14-C15	-5.32	109.61	120.11
3	A	213	CBJ	C13-N12-C11	-5.32	116.28	124.83
3	A	235	CBJ	C11-N12-C2	5.04	114.86	110.74
3	B	222	CBJ	C6-C5-C11	5.03	126.14	119.82
3	A	235	CBJ	C3-C2-N12	-4.99	102.52	106.18
3	A	213	CBJ	O1-C2-N12	4.97	134.44	125.88
3	A	213	CBJ	C6-C5-C11	4.97	126.06	119.82
3	A	235	CBJ	C13-C14-C15	-4.84	110.56	120.11
3	A	235	CBJ	C5-C11-N12	-4.78	102.37	109.07
3	A	213	CBJ	O4-C3-C2	4.74	127.48	123.72
3	B	222	CBJ	O18-C17-C22	-4.73	118.37	121.79
3	B	245	CBJ	C6-C5-C3	-4.68	121.95	130.18
3	A	213	CBJ	C11-N12-C2	-4.59	106.99	110.74
3	B	222	CBJ	C11-N12-C2	-4.50	107.07	110.74
3	B	245	CBJ	C5-C11-N12	-4.41	102.89	109.07
3	A	235	CBJ	C6-C5-C3	-4.39	122.47	130.18
3	B	245	CBJ	C3-C2-N12	-4.26	103.06	106.18
3	A	213	CBJ	O18-C17-C22	-4.26	118.71	121.79
3	B	222	CBJ	C19-O18-C17	-4.23	106.36	113.65
3	B	245	CBJ	C6-C5-C11	4.17	125.06	119.82
3	B	245	CBJ	C11-N12-C2	4.15	114.13	110.74
3	B	222	CBJ	O1-C2-N12	4.09	132.93	125.88
3	A	235	CBJ	C5-C3-C2	4.00	106.69	105.16
3	B	245	CBJ	O4-C3-C2	-3.76	120.75	123.72
3	A	235	CBJ	C6-C5-C11	3.64	124.40	119.82
3	A	235	CBJ	C20-O21-C22	-3.35	105.42	113.99
3	A	235	CBJ	O4-C3-C2	-3.35	121.07	123.72
3	A	213	CBJ	C10-C11-C5	-3.29	118.22	121.97
3	A	235	CBJ	O18-C17-C22	3.22	124.11	121.79
3	A	213	CBJ	C10-C9-C7	3.05	123.16	119.19
3	B	222	CBJ	BR8-C7-C9	3.05	123.73	119.30

Continued on next page...

Continued from previous page...

Mol	Chain	Res	Type	Atoms	Z	Observed(°)	Ideal(°)
3	A	213	CBJ	BR8-C7-C9	3.04	123.72	119.30
3	B	245	CBJ	C20-O21-C22	-3.01	106.30	113.99
3	B	245	CBJ	C15-C14-C23	3.01	123.27	117.88
3	A	235	CBJ	O26-C24-C23	2.99	123.42	114.75
3	B	222	CBJ	BR8-C7-C6	-2.98	115.12	119.27
3	A	235	CBJ	C15-C14-C23	2.96	123.18	117.88
3	B	222	CBJ	C6-C5-C3	-2.91	125.06	130.18
3	B	245	CBJ	C5-C3-C2	2.88	106.26	105.16
3	B	222	CBJ	C13-N12-C2	-2.87	118.67	123.54
3	B	245	CBJ	C14-C23-C24	2.87	126.17	120.77
3	B	222	CBJ	O25-C24-C23	-2.83	114.18	121.16
3	B	245	CBJ	C10-C11-N12	2.76	136.31	130.51
3	A	235	CBJ	C9-C7-C6	2.75	125.46	121.48
3	B	222	CBJ	C13-N12-C11	-2.73	120.45	124.83
3	B	222	CBJ	C10-C11-C5	-2.70	118.89	121.97
3	B	245	CBJ	O18-C17-C22	2.65	123.70	121.79
3	A	213	CBJ	O21-C22-C17	2.65	125.07	121.64
3	A	235	CBJ	C14-C23-C24	2.63	125.73	120.77
3	A	235	CBJ	C22-C23-C14	-2.57	114.91	118.50
3	A	235	CBJ	C10-C11-N12	2.57	135.92	130.51
3	B	222	CBJ	C5-C3-C2	-2.57	104.17	105.16
3	A	213	CBJ	C22-C23-C14	2.56	122.07	118.50
3	A	235	CBJ	C19-O18-C17	-2.49	109.36	113.65
3	B	245	CBJ	C19-O18-C17	-2.41	109.51	113.65
3	B	245	CBJ	C22-C23-C14	-2.40	115.15	118.50
3	B	222	CBJ	C5-C6-C7	-2.38	114.81	119.01
3	A	235	CBJ	C5-C6-C7	-2.36	114.84	119.01
3	B	222	CBJ	C10-C9-C7	2.35	122.25	119.19
3	A	213	CBJ	O18-C17-C16	2.34	120.60	116.85
3	B	245	CBJ	O4-C3-C5	2.29	132.76	126.92
3	B	222	CBJ	O18-C17-C16	2.29	120.52	116.85
3	A	235	CBJ	O25-C24-C23	-2.28	115.54	121.16
3	A	213	CBJ	C6-C5-C3	-2.27	126.19	130.18
3	B	245	CBJ	C13-N12-C2	-2.23	119.76	123.54
3	B	245	CBJ	O21-C20-C19	-2.21	104.09	112.10
3	A	235	CBJ	O21-C20-C19	-2.09	104.50	112.10
3	B	245	CBJ	C5-C6-C7	-2.06	115.37	119.01
3	A	213	CBJ	O25-C24-C23	-2.06	116.08	121.16
3	A	235	CBJ	O4-C3-C5	2.06	132.16	126.92

There are no chirality outliers.

All (12) torsion outliers are listed below:

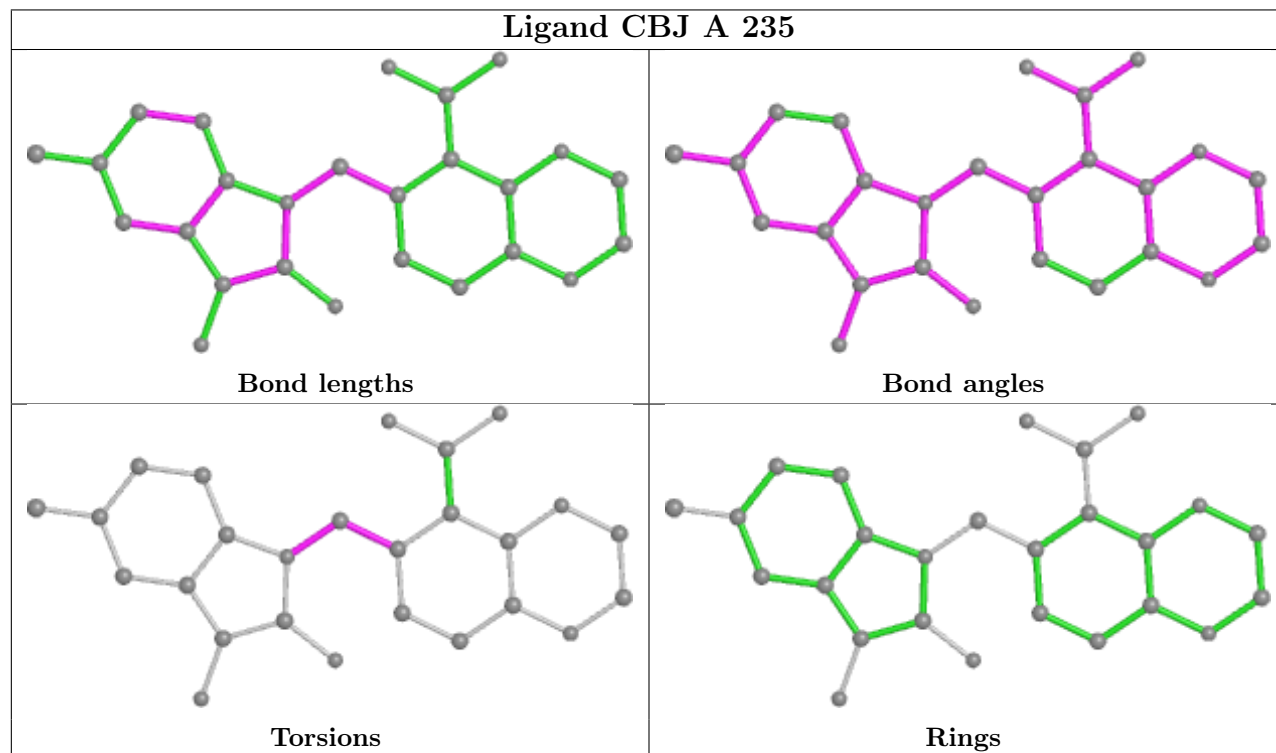
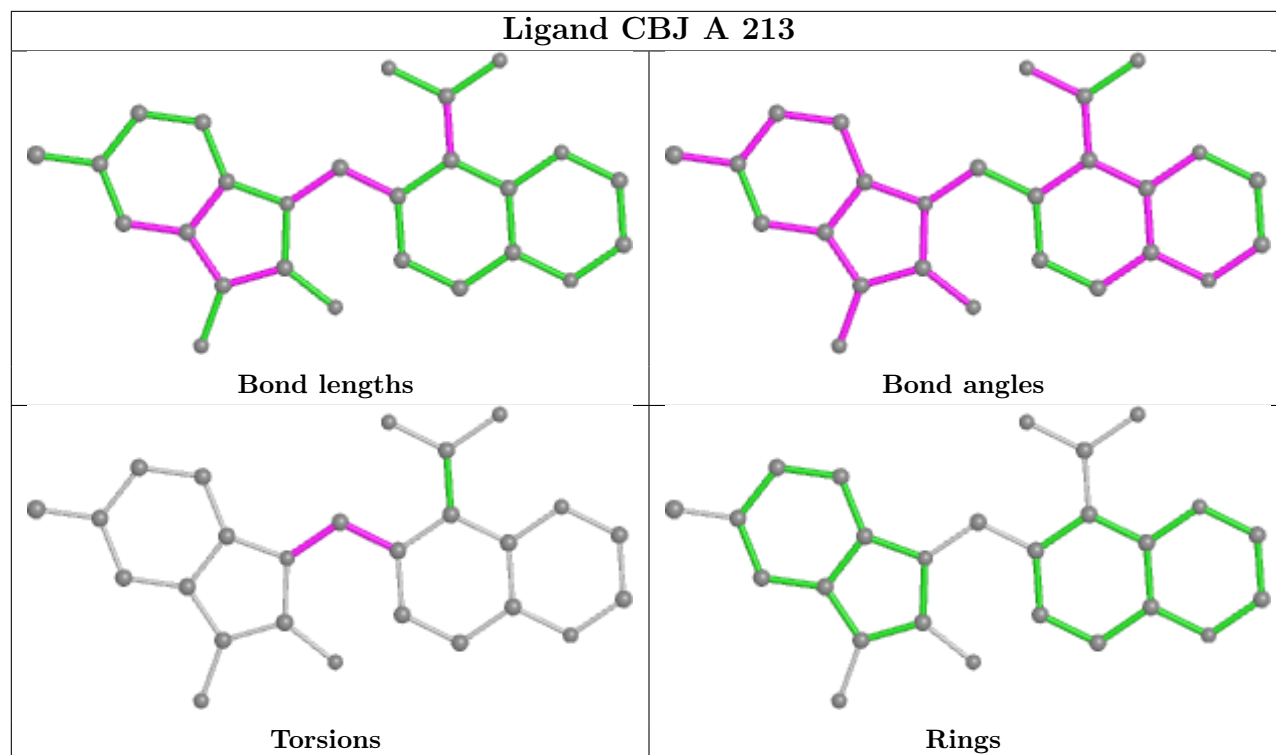
Mol	Chain	Res	Type	Atoms
3	A	213	CBJ	N12-C13-C14-C23
3	B	222	CBJ	N12-C13-C14-C23
3	A	235	CBJ	C14-C13-N12-C11
3	B	245	CBJ	C14-C13-N12-C11
3	B	222	CBJ	N12-C13-C14-C15
3	A	213	CBJ	C14-C13-N12-C11
3	A	235	CBJ	C14-C13-N12-C2
3	B	245	CBJ	C14-C13-N12-C2
3	B	222	CBJ	C14-C13-N12-C11
3	B	245	CBJ	N12-C13-C14-C23
3	A	235	CBJ	N12-C13-C14-C23
3	A	213	CBJ	N12-C13-C14-C15

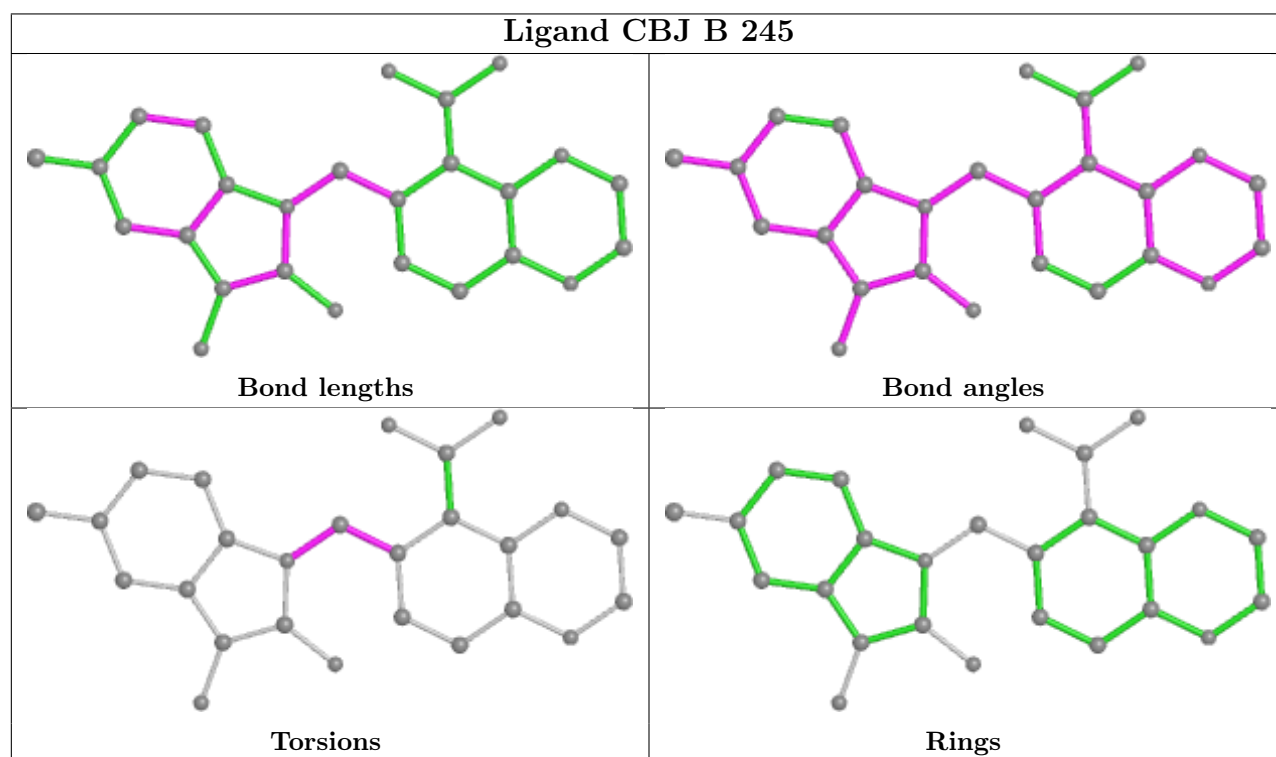
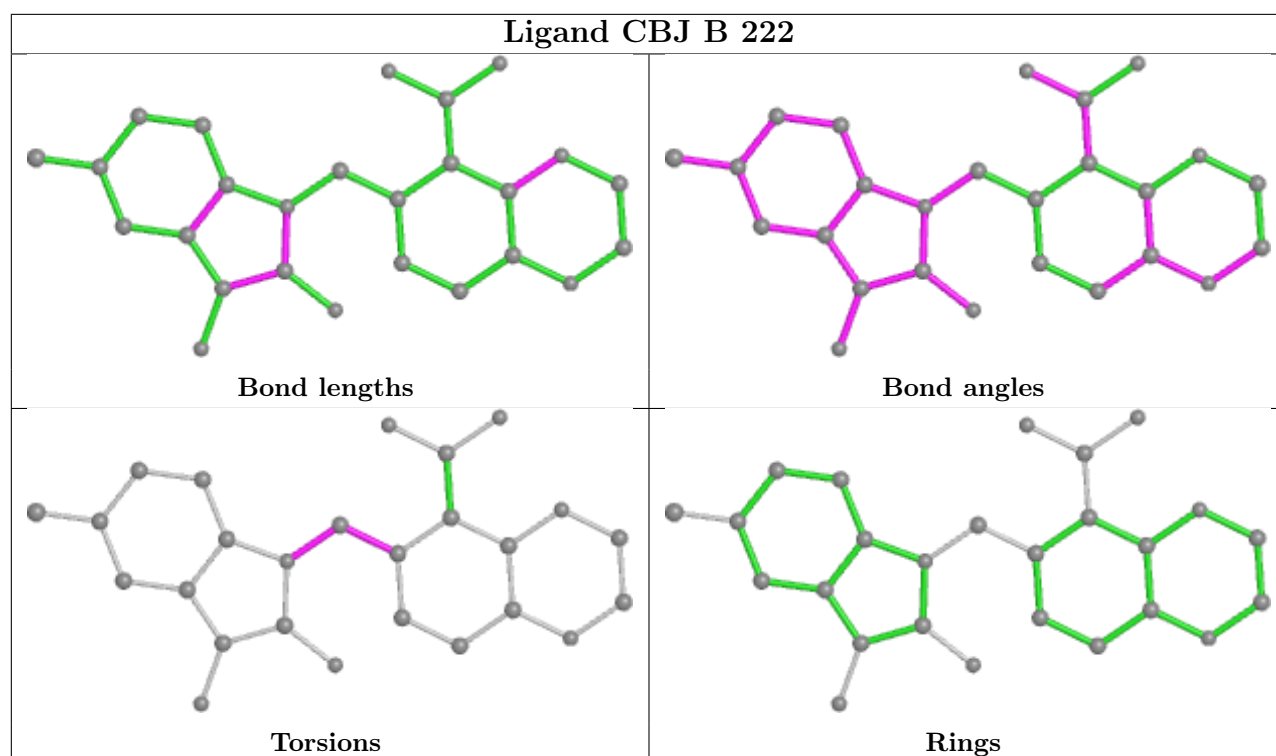
There are no ring outliers.

9 monomers are involved in 42 short contacts:

Mol	Chain	Res	Type	Clashes	Symm-Clashes
3	A	213	CBJ	8	0
3	A	235	CBJ	2	0
4	A	215	ACY	7	0
4	A	3	ACY	5	0
4	B	2	ACY	4	0
2	A	4	SO4	1	0
4	A	214	ACY	5	0
3	B	222	CBJ	9	0
4	A	1	ACY	6	0

The following is a two-dimensional graphical depiction of Mogul quality analysis of bond lengths, bond angles, torsion angles, and ring geometry for all instances of the Ligand of Interest. In addition, ligands with molecular weight > 250 and outliers as shown on the validation Tables will also be included. For torsion angles, if less than 5% of the Mogul distribution of torsion angles is within 10 degrees of the torsion angle in question, then that torsion angle is considered an outlier. Any bond that is central to one or more torsion angles identified as an outlier by Mogul will be highlighted in the graph. For rings, the root-mean-square deviation (RMSD) between the ring in question and similar rings identified by Mogul is calculated over all ring torsion angles. If the average RMSD is greater than 60 degrees and the minimal RMSD between the ring in question and any Mogul-identified rings is also greater than 60 degrees, then that ring is considered an outlier. The outliers are highlighted in purple. The color gray indicates Mogul did not find sufficient equivalents in the CSD to analyse the geometry.





5.7 Other polymers [\(i\)](#)

There are no such residues in this entry.

5.8 Polymer linkage issues

There are no chain breaks in this entry.

6 Fit of model and data [i](#)

6.1 Protein, DNA and RNA chains [i](#)

In the following table, the column labelled ‘#RSRZ > 2’ contains the number (and percentage) of RSRZ outliers, followed by percent RSRZ outliers for the chain as percentile scores relative to all X-ray entries and entries of similar resolution. The OWAB column contains the minimum, median, 95th percentile and maximum values of the occupancy-weighted average B-factor per residue. The column labelled ‘Q < 0.9’ lists the number of (and percentage) of residues with an average occupancy less than 0.9.

Mol	Chain	Analysed	<RSRZ>	#RSRZ>2	OWAB(Å ²)	Q<0.9
1	A	149/183 (81%)	-0.34	4 (2%) 54 63	19, 28, 64, 111	19 (12%)
1	B	149/183 (81%)	-0.33	5 (3%) 45 55	19, 29, 65, 106	20 (13%)
All	All	298/366 (81%)	-0.34	9 (3%) 50 59	19, 29, 65, 111	39 (13%)

All (9) RSRZ outliers are listed below:

Mol	Chain	Res	Type	RSRZ
1	B	143	TYR	7.6
1	A	143	TYR	5.3
1	A	144	ASN	3.2
1	A	188	LYS	2.9
1	B	148	GLN	2.7
1	B	188	LYS	2.7
1	B	194	TYR	2.6
1	A	148	GLN	2.4
1	B	209	GLN	2.1

6.2 Non-standard residues in protein, DNA, RNA chains [i](#)

There are no non-standard protein/DNA/RNA residues in this entry.

6.3 Carbohydrates [i](#)

There are no monosaccharides in this entry.

6.4 Ligands [i](#)

In the following table, the Atoms column lists the number of modelled atoms in the group and the number defined in the chemical component dictionary. The B-factors column lists the minimum,

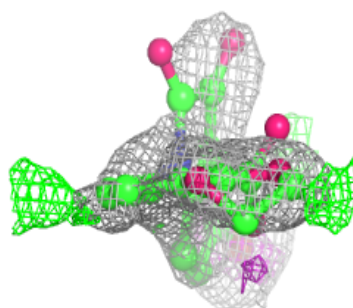
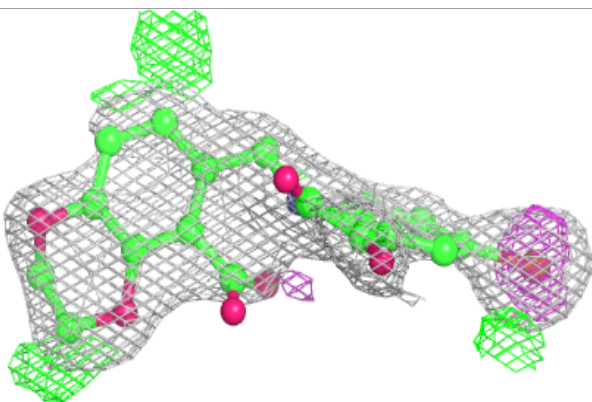
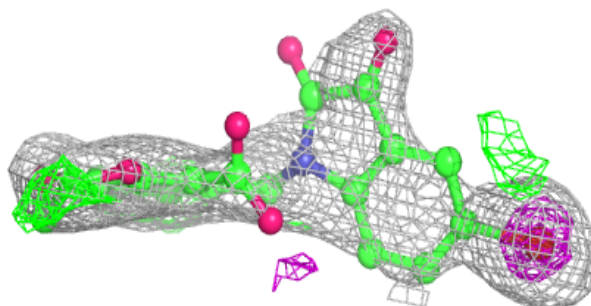
median, 95th percentile and maximum values of B factors of atoms in the group. The column labelled 'Q< 0.9' lists the number of atoms with occupancy less than 0.9.

Mol	Type	Chain	Res	Atoms	RSCC	RSR	B-factors(Å ²)	Q<0.9
4	ACY	A	3	4/4	0.86	0.15	45,47,62,68	0
3	CBJ	A	213	26/26	0.89	0.20	33,40,50,61	26
2	SO4	B	8	5/5	0.89	0.11	43,48,53,61	5
3	CBJ	B	222	26/26	0.92	0.16	45,51,65,82	26
2	SO4	A	7	5/5	0.94	0.11	44,51,58,65	5
2	SO4	B	6	5/5	0.96	0.09	38,43,50,52	5
2	SO4	B	3	5/5	0.97	0.06	42,49,54,62	5
3	CBJ	B	245	26/26	0.97	0.11	29,44,57,60	26
4	ACY	A	1	4/4	0.97	0.14	19,47,58,59	0
3	CBJ	A	235	26/26	0.97	0.13	27,44,57,62	26
4	ACY	A	214	4/4	0.97	0.12	35,49,54,56	0
4	ACY	A	215	4/4	0.97	0.10	35,46,50,52	0
4	ACY	B	2	4/4	0.97	0.17	20,46,57,59	0
2	SO4	A	5	5/5	0.98	0.09	38,44,48,48	5
2	SO4	A	4	5/5	0.98	0.09	33,43,45,56	5
2	SO4	B	1	5/5	0.98	0.10	37,40,44,47	5
2	SO4	A	2	5/5	0.99	0.10	38,40,44,46	5

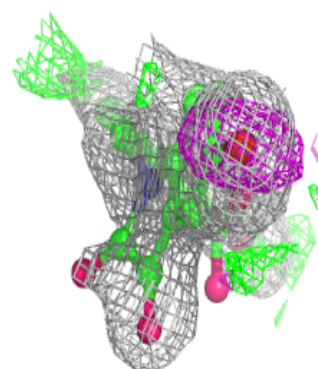
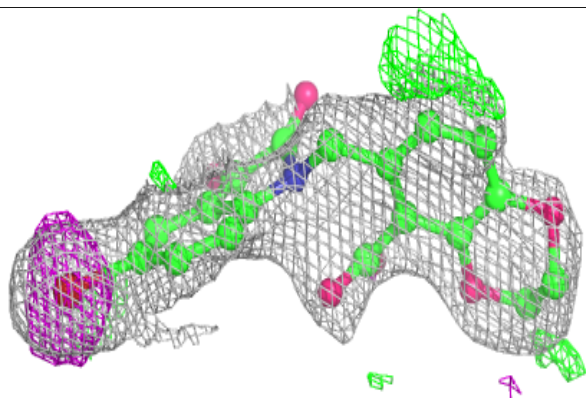
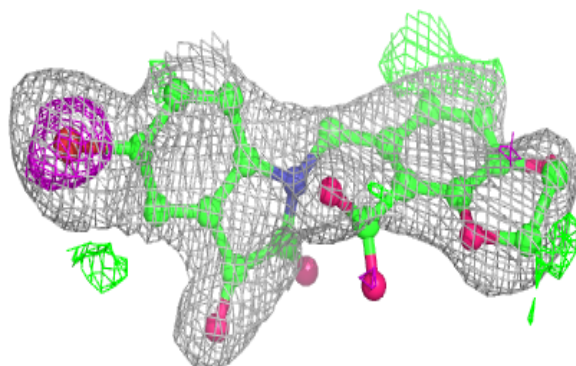
The following is a graphical depiction of the model fit to experimental electron density of all instances of the Ligand of Interest. In addition, ligands with molecular weight > 250 and outliers as shown on the geometry validation Tables will also be included. Each fit is shown from different orientation to approximate a three-dimensional view.

Electron density around CBJ A 213:

$2mF_o-DF_c$ (at 0.7 rmsd) in gray
 mF_o-DF_c (at 3 rmsd) in purple (negative)
and green (positive)

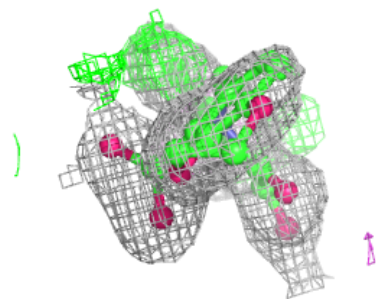
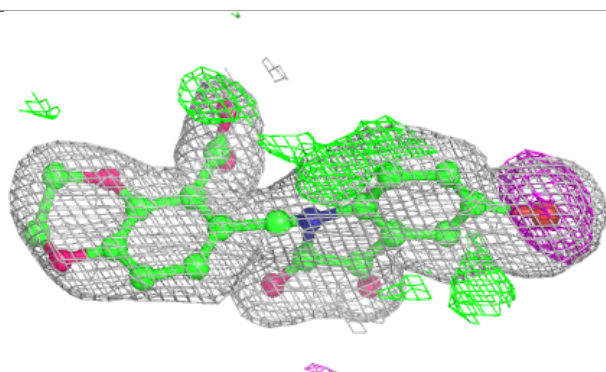
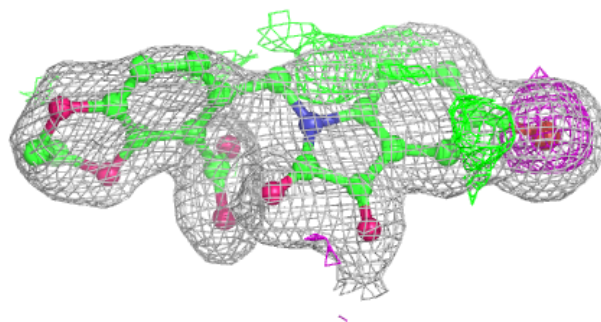
**Electron density around CBJ B 222:**

$2mF_o-DF_c$ (at 0.7 rmsd) in gray
 mF_o-DF_c (at 3 rmsd) in purple (negative)
and green (positive)

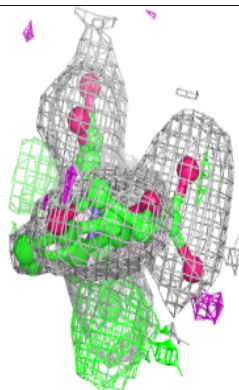
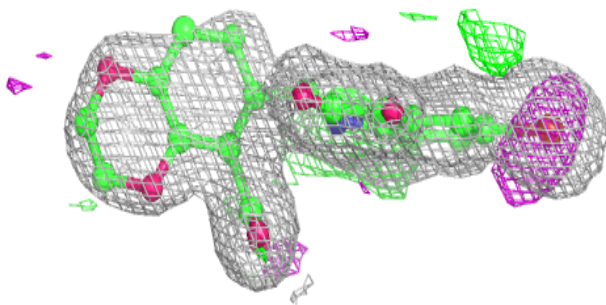
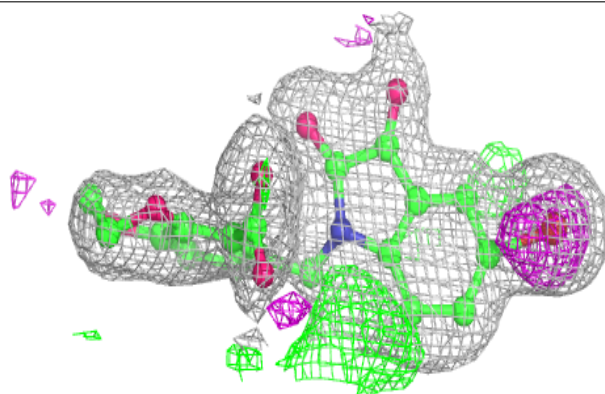


Electron density around CBJ B 245:

$2mF_o-DF_c$ (at 0.7 rmsd) in gray
 mF_o-DF_c (at 3 rmsd) in purple (negative)
and green (positive)

**Electron density around CBJ A 235:**

$2mF_o-DF_c$ (at 0.7 rmsd) in gray
 mF_o-DF_c (at 3 rmsd) in purple (negative)
and green (positive)



6.5 Other polymers [i](#)

There are no such residues in this entry.