



# Full wwPDB X-ray Structure Validation Report ⓘ

Aug 29, 2023 – 03:08 AM EDT

PDB ID : 3M7W  
Title : Crystal Structure of Type I 3-Dehydroquinate Dehydratase (aroD) from Salmonella typhimurium LT2 in Covalent Complex with Dehydroquinate  
Authors : Minasov, G.; Light, S.H.; Shuvalova, L.; Papazisi, L.; Anderson, W.F.; Center for Structural Genomics of Infectious Diseases (CSGID)  
Deposited on : 2010-03-17  
Resolution : 1.95 Å(reported)

This is a Full wwPDB X-ray Structure Validation Report for a publicly released PDB entry.

We welcome your comments at [validation@mail.wwpdb.org](mailto:validation@mail.wwpdb.org)

A user guide is available at

<https://www.wwpdb.org/validation/2017/XrayValidationReportHelp>

with specific help available everywhere you see the ⓘ symbol.

The types of validation reports are described at

<http://www.wwpdb.org/validation/2017/FAQs#types>.

---

The following versions of software and data (see [references ⓘ](#)) were used in the production of this report:

MolProbity : 4.02b-467  
Mogul : 1.8.5 (274361), CSD as541be (2020)  
Xtriage (Phenix) : 1.13  
EDS : 2.35  
Percentile statistics : 20191225.v01 (using entries in the PDB archive December 25th 2019)  
Refmac : 5.8.0158  
CCP4 : 7.0.044 (Gargrove)  
Ideal geometry (proteins) : Engh & Huber (2001)  
Ideal geometry (DNA, RNA) : Parkinson et al. (1996)  
Validation Pipeline (wwPDB-VP) : 2.35

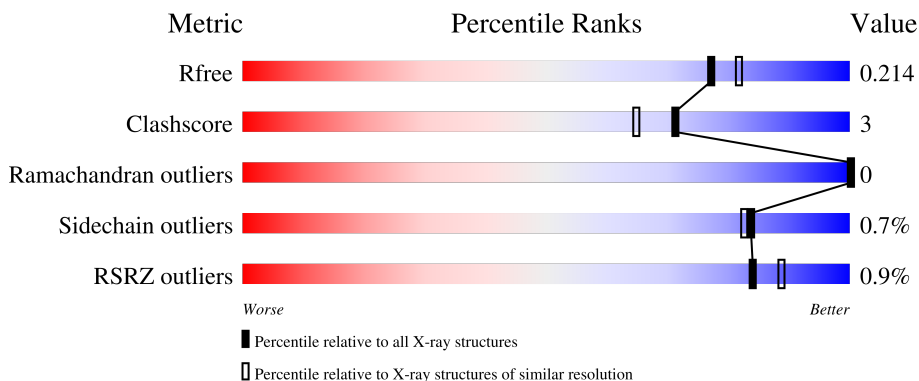
# 1 Overall quality at a glance

The following experimental techniques were used to determine the structure:

*X-RAY DIFFRACTION*

The reported resolution of this entry is 1.95 Å.

Percentile scores (ranging between 0-100) for global validation metrics of the entry are shown in the following graphic. The table shows the number of entries on which the scores are based.



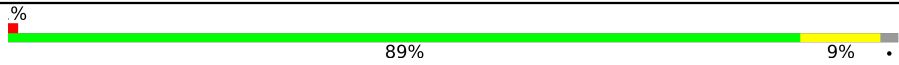
Metric	Whole archive (#Entries)	Similar resolution (#Entries, resolution range(Å))
$R_{free}$	130704	2580 (1.96-1.96)
Clashscore	141614	2705 (1.96-1.96)
Ramachandran outliers	138981	2678 (1.96-1.96)
Sidechain outliers	138945	2678 (1.96-1.96)
RSRZ outliers	127900	2539 (1.96-1.96)

The table below summarises the geometric issues observed across the polymeric chains and their fit to the electron density. The red, orange, yellow and green segments of the lower bar indicate the fraction of residues that contain outliers for  $\geq 3$ , 2, 1 and 0 types of geometric quality criteria respectively. A grey segment represents the fraction of residues that are not modelled. The numeric value for each fraction is indicated below the corresponding segment, with a dot representing fractions  $\leq 5\%$ . The upper red bar (where present) indicates the fraction of residues that have poor fit to the electron density. The numeric value is given above the bar.

Mol	Chain	Length	Quality of chain
1	A	255	 2% 89% 10% .
1	B	255	 91% 7% .
1	C	255	 92% 6% .
1	D	255	 2% 95% . .
1	E	255	 85% 13% .

Continued on next page...

*Continued from previous page...*

Mol	Chain	Length	Quality of chain
1	F	255	 <p>A horizontal bar chart representing the quality of the chain. The bar is divided into three segments: a large green segment (89%), a smaller yellow segment (9%), and a very small grey segment (2%). A percentage sign (%) is located at the top left of the bar, and a dot (•) is at the top right. The values 89% and 9% are printed below the bar.</p>

## 2 Entry composition i

There are 4 unique types of molecules in this entry. The entry contains 12930 atoms, of which 0 are hydrogens and 0 are deuteriums.

In the tables below, the ZeroOcc column contains the number of atoms modelled with zero occupancy, the AltConf column contains the number of residues with at least one atom in alternate conformation and the Trace column contains the number of residues modelled with at most 2 atoms.

- Molecule 1 is a protein called 3-dehydroquinate dehydratase.

Mol	Chain	Residues	Atoms					ZeroOcc	AltConf	Trace
1	A	251	Total	C	N	O	S	0	6	0
			1961	1235	337	380	9			
1	B	251	Total	C	N	O	S	0	4	0
			1945	1224	335	377	9			
1	C	251	Total	C	N	O	S	0	0	0
			1909	1203	327	371	8			
1	D	252	Total	C	N	O	S	0	2	0
			1933	1219	330	374	10			
1	E	251	Total	C	N	O	S	0	4	0
			1946	1224	335	379	8			
1	F	251	Total	C	N	O	S	0	5	0
			1952	1229	333	382	8			

There are 18 discrepancies between the modelled and reference sequences:

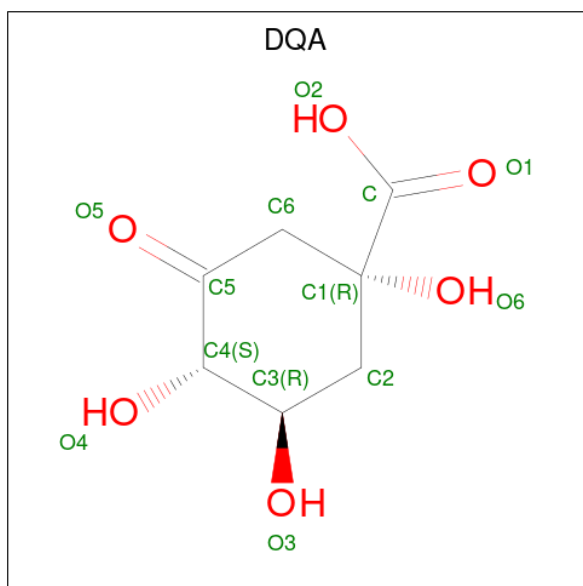
Chain	Residue	Modelled	Actual	Comment	Reference
A	-2	SER	-	expression tag	UNP P58687
A	-1	ASN	-	expression tag	UNP P58687
A	0	ALA	-	expression tag	UNP P58687
B	-2	SER	-	expression tag	UNP P58687
B	-1	ASN	-	expression tag	UNP P58687
B	0	ALA	-	expression tag	UNP P58687
C	-2	SER	-	expression tag	UNP P58687
C	-1	ASN	-	expression tag	UNP P58687
C	0	ALA	-	expression tag	UNP P58687
D	-2	SER	-	expression tag	UNP P58687
D	-1	ASN	-	expression tag	UNP P58687
D	0	ALA	-	expression tag	UNP P58687
E	-2	SER	-	expression tag	UNP P58687
E	-1	ASN	-	expression tag	UNP P58687
E	0	ALA	-	expression tag	UNP P58687
F	-2	SER	-	expression tag	UNP P58687
F	-1	ASN	-	expression tag	UNP P58687

*Continued on next page...*

Continued from previous page...

Chain	Residue	Modelled	Actual	Comment	Reference
F	0	ALA	-	expression tag	UNP P58687

- Molecule 2 is 1,3,4-TRIHydroxy-5-Oxo-cyclohexanecarboxylic acid (three-letter code: DQA) (formula: C<sub>7</sub>H<sub>10</sub>O<sub>6</sub>).



Mol	Chain	Residues	Atoms	ZeroOcc	AltConf
2	A	1	Total C O 12 7 5	0	0
2	B	1	Total C O 12 7 5	0	0
2	C	1	Total C O 12 7 5	0	0
2	D	1	Total C O 12 7 5	0	0
2	E	1	Total C O 12 7 5	0	0
2	F	1	Total C O 12 7 5	0	0

- Molecule 3 is GLYCEROL (three-letter code: GOL) (formula: C<sub>3</sub>H<sub>8</sub>O<sub>3</sub>).



Mol	Chain	Residues	Atoms	ZeroOcc	AltConf
3	A	1	Total C O 6 3 3	0	0
3	B	1	Total C O 6 3 3	0	0
3	B	1	Total C O 6 3 3	0	0
3	C	1	Total C O 6 3 3	0	0
3	C	1	Total C O 6 3 3	0	0
3	C	1	Total C O 6 3 3	0	0
3	C	1	Total C O 6 3 3	0	0
3	D	1	Total C O 6 3 3	0	0
3	D	1	Total C O 6 3 3	0	0
3	E	1	Total C O 6 3 3	0	0
3	E	1	Total C O 6 3 3	0	0
3	E	1	Total C O 6 3 3	0	0
3	F	1	Total C O 6 3 3	0	0
3	F	1	Total C O 6 3 3	0	0

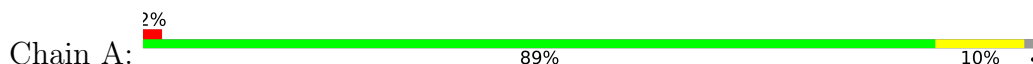
- Molecule 4 is water.

Mol	Chain	Residues	Atoms		ZeroOcc	AltConf
4	A	164	Total 166	O 166	0	2
4	B	203	Total 205	O 205	0	2
4	C	193	Total 198	O 198	0	5
4	D	189	Total 192	O 192	0	3
4	E	170	Total 176	O 176	0	6
4	F	189	Total 191	O 191	0	2

### 3 Residue-property plots [i](#)

These plots are drawn for all protein, RNA, DNA and oligosaccharide chains in the entry. The first graphic for a chain summarises the proportions of the various outlier classes displayed in the second graphic. The second graphic shows the sequence view annotated by issues in geometry and electron density. Residues are color-coded according to the number of geometric quality criteria for which they contain at least one outlier: green = 0, yellow = 1, orange = 2 and red = 3 or more. A red dot above a residue indicates a poor fit to the electron density ( $RSRZ > 2$ ). Stretches of 2 or more consecutive residues without any outlier are shown as a green connector. Residues present in the sample, but not in the model, are shown in grey.

- Molecule 1: 3-dehydroquinatase dehydratase



- Molecule 1: 3-dehydroquinatase dehydratase



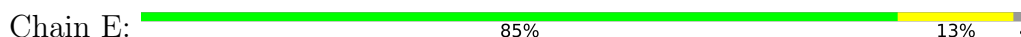
- Molecule 1: 3-dehydroquinatase dehydratase



- Molecule 1: 3-dehydroquinatase dehydratase



- Molecule 1: 3-dehydroquinatase dehydratase







- Molecule 1: 3-dehydroquinate dehydratase

Chain F: %



## 4 Data and refinement statistics

Property	Value	Source
Space group	C 1 2 1	Depositor
Cell constants a, b, c, $\alpha$ , $\beta$ , $\gamma$	184.33Å 66.58Å 128.23Å 90.00° 119.08° 90.00°	Depositor
Resolution (Å)	29.69 – 1.95 29.69 – 1.95	Depositor EDS
% Data completeness (in resolution range)	99.9 (29.69-1.95) 99.9 (29.69-1.95)	Depositor EDS
$R_{merge}$	0.09	Depositor
$R_{sym}$	(Not available)	Depositor
$\langle I/\sigma(I) \rangle$ <sup>1</sup>	2.99 (at 1.95Å)	Xtrriage
Refinement program	REFMAC 5.5.0102	Depositor
R, $R_{free}$	0.154 , 0.206 0.164 , 0.214	Depositor DCC
$R_{free}$ test set	4942 reflections (4.99%)	wwPDB-VP
Wilson B-factor (Å <sup>2</sup> )	20.4	Xtrriage
Anisotropy	0.415	Xtrriage
Bulk solvent $k_{sol}$ (e/Å <sup>3</sup> ), $B_{sol}$ (Å <sup>2</sup> )	0.38 , 50.7	EDS
L-test for twinning <sup>2</sup>	$\langle  L  \rangle = 0.49$ , $\langle L^2 \rangle = 0.33$	Xtrriage
Estimated twinning fraction	No twinning to report.	Xtrriage
$F_o, F_c$ correlation	0.97	EDS
Total number of atoms	12930	wwPDB-VP
Average B, all atoms (Å <sup>2</sup> )	26.0	wwPDB-VP

Xtrriage's analysis on translational NCS is as follows: *The analyses of the Patterson function reveals a significant off-origin peak that is 63.46 % of the origin peak, indicating pseudo-translational symmetry. The chance of finding a peak of this or larger height randomly in a structure without pseudo-translational symmetry is equal to 9.6339e-06. The detected translational NCS is most likely also responsible for the elevated intensity ratio.*

<sup>1</sup>Intensities estimated from amplitudes.

<sup>2</sup>Theoretical values of  $\langle |L| \rangle$ ,  $\langle L^2 \rangle$  for acentric reflections are 0.5, 0.333 respectively for untwinned datasets, and 0.375, 0.2 for perfectly twinned datasets.

## 5 Model quality [i](#)

### 5.1 Standard geometry [i](#)

Bond lengths and bond angles in the following residue types are not validated in this section: GOL, DQA

The Z score for a bond length (or angle) is the number of standard deviations the observed value is removed from the expected value. A bond length (or angle) with  $|Z| > 5$  is considered an outlier worth inspection. RMSZ is the root-mean-square of all Z scores of the bond lengths (or angles).

Mol	Chain	Bond lengths		Bond angles	
		RMSZ	# Z  >5	RMSZ	# Z  >5
1	A	0.57	0/1987	0.68	0/2688
1	B	0.58	0/1971	0.68	0/2668
1	C	0.62	0/1935	0.70	0/2621
1	D	0.58	0/1959	0.70	0/2652
1	E	0.55	0/1972	0.69	0/2669
1	F	0.57	0/1978	0.67	0/2679
All	All	0.58	0/11802	0.69	0/15977

There are no bond length outliers.

There are no bond angle outliers.

There are no chirality outliers.

There are no planarity outliers.

### 5.2 Too-close contacts [i](#)

In the following table, the Non-H and H(model) columns list the number of non-hydrogen atoms and hydrogen atoms in the chain respectively. The H(added) column lists the number of hydrogen atoms added and optimized by MolProbity. The Clashes column lists the number of clashes within the asymmetric unit, whereas Symm-Clashes lists symmetry-related clashes.

Mol	Chain	Non-H	H(model)	H(added)	Clashes	Symm-Clashes
1	A	1961	0	2000	17	0
1	B	1945	0	1981	13	0
1	C	1909	0	1944	11	0
1	D	1933	0	1973	6	0
1	E	1946	0	1975	22	0
1	F	1952	0	1981	19	0
2	A	12	0	9	0	0

*Continued on next page...*

Continued from previous page...

Mol	Chain	Non-H	H(model)	H(added)	Clashes	Symm-Clashes
2	B	12	0	9	0	0
2	C	12	0	9	0	0
2	D	12	0	9	0	0
2	E	12	0	9	0	0
2	F	12	0	9	0	0
3	A	6	0	8	0	0
3	B	12	0	16	0	0
3	C	24	0	32	0	0
3	D	12	0	16	0	0
3	E	18	0	24	0	0
3	F	12	0	16	3	0
4	A	166	0	0	0	0
4	B	205	0	0	2	0
4	C	198	0	0	0	0
4	D	192	0	0	1	0
4	E	176	0	0	1	0
4	F	191	0	0	4	0
All	All	12930	0	12020	83	0

The all-atom clashscore is defined as the number of clashes found per 1000 atoms (including hydrogen atoms). The all-atom clashscore for this structure is 3.

All (83) close contacts within the same asymmetric unit are listed below, sorted by their clash magnitude.

Atom-1	Atom-2	Interatomic distance (Å)	Clash overlap (Å)
1:A:74[A]:ASP:OD2	1:A:75[A]:LYS:HE2	1.87	0.73
1:C:45:LEU:HD22	1:C:72:ILE:HG13	1.70	0.72
1:F:20:VAL:HG11	1:F:239:VAL:HG11	1.72	0.71
1:A:112[A]:MET:HG2	1:A:137:ALA:HB3	1.72	0.71
1:A:74[A]:ASP:OD1	1:A:75[A]:LYS:HG2	1.90	0.71
1:F:20:VAL:CG1	1:F:239:VAL:HG11	2.21	0.70
1:E:178:LYS:HE3	1:F:218:VAL:O	1.94	0.68
1:A:2:LYS:HB3	1:A:197:ASP:O	1.99	0.62
1:A:218:VAL:HG13	1:A:219:PHE:CD2	2.36	0.61
1:C:20:VAL:HG11	1:C:239:VAL:HG11	1.84	0.59
1:E:35:LEU:HD23	1:E:71:ILE:HG23	1.86	0.58
1:E:2:LYS:HG2	1:E:3:THR:H	1.67	0.58
1:E:35:LEU:HG	1:E:71:ILE:HD13	1.84	0.58
1:C:20:VAL:CG1	1:C:239:VAL:HG11	2.34	0.57
1:A:74[B]:ASP:O	1:A:75[B]:LYS:HD3	2.05	0.56
1:E:27:ILE:CD1	1:E:64:ALA:HA	2.36	0.56

Continued on next page...

*Continued from previous page...*

Atom-1	Atom-2	Interatomic distance (Å)	Clash overlap (Å)
1:A:154:ILE:HG23	1:A:171:ILE:HD13	1.88	0.56
1:E:20:VAL:HG11	1:E:239:VAL:HG11	1.88	0.55
1:B:211:ILE:HD13	1:C:219:PHE:HE2	1.71	0.55
1:C:154:ILE:HG23	1:C:171:ILE:HD13	1.89	0.55
1:E:20:VAL:CG1	1:E:239:VAL:HG11	2.37	0.55
1:A:215:ALA:HB2	1:D:211:ILE:HD13	1.89	0.54
1:F:6:VAL:HG12	1:F:76:PRO:HB3	1.88	0.54
1:D:170:LYS:HA	1:D:201:ILE:O	2.09	0.53
1:B:74[B]:ASP:OD2	1:B:75[B]:LYS:HG2	2.08	0.53
1:F:13:GLU:O	1:F:17:LYS:NZ	2.43	0.52
1:B:112[B]:MET:HG2	1:B:137:ALA:HB3	1.91	0.51
3:F:254:GOL:H32	4:F:397:HOH:O	2.09	0.51
1:B:211:ILE:HD13	1:C:219:PHE:CE2	2.45	0.51
3:F:254:GOL:C3	4:F:397:HOH:O	2.58	0.51
1:E:52:PHE:O	1:E:55:VAL:HG13	2.11	0.50
1:E:154:ILE:HG23	1:E:171:ILE:HD13	1.92	0.50
1:F:74[B]:ASP:OD1	1:F:75[B]:LYS:HE3	2.11	0.50
1:D:154:ILE:HG23	1:D:171:ILE:HD13	1.93	0.49
1:B:3:THR:HG21	1:B:13:GLU:HG3	1.94	0.49
1:F:6:VAL:CG1	1:F:76:PRO:HB3	2.43	0.48
1:E:82:ARG:O	1:E:88:GLY:HA3	2.13	0.48
1:B:22:LEU:C	1:B:22:LEU:HD23	2.34	0.48
1:B:211:ILE:HG21	1:C:215:ALA:HB2	1.94	0.48
1:E:117:LEU:HD11	1:E:160[B]:LYS:HD3	1.94	0.48
1:B:9:LEU:HD11	1:B:17:LYS:HD2	1.95	0.47
1:D:20:VAL:HG11	1:D:239:VAL:HG11	1.97	0.47
1:E:249:LEU:HD21	1:F:214:LEU:HD11	1.97	0.47
1:F:154:ILE:HG23	1:F:171:ILE:HD13	1.96	0.47
1:F:20:VAL:CG1	1:F:239:VAL:CG1	2.92	0.46
1:E:2:LYS:HG2	1:E:3:THR:N	2.28	0.45
1:F:27:ILE:CD1	1:F:64:ALA:HA	2.46	0.45
1:F:38:ARG:HG2	1:F:72:ILE:HD13	1.98	0.45
1:C:170:LYS:HA	1:C:201:ILE:O	2.16	0.45
1:B:13:GLU:O	1:B:17:LYS:NZ	2.50	0.44
1:B:184:LEU:C	1:B:184:LEU:HD13	2.37	0.44
4:B:580:HOH:O	1:C:252:ALA:HB3	2.16	0.44
1:C:66:GLY:O	1:C:70:GLU:HB2	2.18	0.44
1:E:49:VAL:HG21	1:E:79:PHE:CE1	2.53	0.43
1:F:115:LEU:O	1:F:140:MET:HA	2.18	0.43
1:A:6:VAL:HG13	1:A:111:ASP:HB3	2.00	0.43
1:A:170:LYS:HA	1:A:201:ILE:O	2.18	0.43

*Continued on next page...*

*Continued from previous page...*

Atom-1	Atom-2	Interatomic distance (Å)	Clash overlap (Å)
1:E:192:GLN:HG3	1:E:220:GLY:HA3	2.00	0.43
1:E:31:LYS:NZ	4:E:813:HOH:O	2.42	0.43
1:F:148:THR:O	3:F:254:GOL:H11	2.18	0.43
1:A:49:VAL:HG21	1:A:79:PHE:CE1	2.54	0.43
1:E:170:LYS:HA	1:E:201:ILE:O	2.19	0.43
1:F:20:VAL:HG12	1:F:239:VAL:CG1	2.50	0.42
1:A:42:PHE:CE1	1:A:75[A]:LYS:HG3	2.54	0.42
1:A:218:VAL:CG2	1:D:178:LYS:HD2	2.49	0.42
1:B:115:LEU:O	1:B:140:MET:HA	2.19	0.42
1:A:143:HIS:CD2	1:A:172:ALA:HB3	2.54	0.42
1:E:143:HIS:CD2	1:E:172:ALA:HB3	2.53	0.42
1:E:19:ILE:HG12	1:E:44:ILE:HB	2.02	0.42
1:A:184:LEU:C	1:A:184:LEU:HD13	2.40	0.42
1:D:218:VAL:HG13	1:D:219:PHE:N	2.35	0.41
1:F:27:ILE:HB	4:F:648:HOH:O	2.20	0.41
1:B:19:ILE:O	1:B:225:PHE:HA	2.19	0.41
1:C:115:LEU:O	1:C:140:MET:HA	2.20	0.41
1:A:252:ALA:HB3	4:D:573:HOH:O	2.20	0.41
1:E:35:LEU:CD2	1:E:71:ILE:HG23	2.49	0.41
1:F:82:ARG:O	1:F:88:GLY:HA3	2.21	0.41
1:F:27:ILE:HG22	4:F:579:HOH:O	2.20	0.40
1:A:38:ARG:HG2	1:A:72:ILE:CD1	2.51	0.40
1:B:69[B]:ARG:NE	4:B:267:HOH:O	2.49	0.40
1:E:13:GLU:O	1:E:17:LYS:NZ	2.54	0.40
1:E:45:LEU:HD22	1:E:72:ILE:HG13	2.02	0.40
1:F:74[B]:ASP:OD2	1:F:74[B]:ASP:N	2.53	0.40

There are no symmetry-related clashes.

## 5.3 Torsion angles [i](#)

### 5.3.1 Protein backbone [i](#)

In the following table, the Percentiles column shows the percent Ramachandran outliers of the chain as a percentile score with respect to all X-ray entries followed by that with respect to entries of similar resolution.

The Analysed column shows the number of residues for which the backbone conformation was analysed, and the total number of residues.

Mol	Chain	Analysed	Favoured	Allowed	Outliers	Percentiles	
1	A	255/255 (100%)	249 (98%)	6 (2%)	0	100	100
1	B	253/255 (99%)	249 (98%)	4 (2%)	0	100	100
1	C	249/255 (98%)	244 (98%)	5 (2%)	0	100	100
1	D	252/255 (99%)	248 (98%)	4 (2%)	0	100	100
1	E	253/255 (99%)	246 (97%)	7 (3%)	0	100	100
1	F	254/255 (100%)	248 (98%)	6 (2%)	0	100	100
All	All	1516/1530 (99%)	1484 (98%)	32 (2%)	0	100	100

There are no Ramachandran outliers to report.

### 5.3.2 Protein sidechains [i](#)

In the following table, the Percentiles column shows the percent sidechain outliers of the chain as a percentile score with respect to all X-ray entries followed by that with respect to entries of similar resolution.

The Analysed column shows the number of residues for which the sidechain conformation was analysed, and the total number of residues.

Mol	Chain	Analysed	Rotameric	Outliers	Percentiles	
1	A	210/207 (101%)	209 (100%)	1 (0%)	88	88
1	B	208/207 (100%)	206 (99%)	2 (1%)	76	74
1	C	204/207 (99%)	203 (100%)	1 (0%)	88	88
1	D	207/207 (100%)	206 (100%)	1 (0%)	88	88
1	E	208/207 (100%)	207 (100%)	1 (0%)	88	88
1	F	209/207 (101%)	207 (99%)	2 (1%)	76	74
All	All	1246/1242 (100%)	1238 (99%)	8 (1%)	84	85

All (8) residues with a non-rotameric sidechain are listed below:

Mol	Chain	Res	Type
1	A	203	MET
1	B	25	LYS
1	B	203	MET
1	C	203	MET
1	D	203	MET
1	E	203	MET
1	F	69	ARG

*Continued on next page...*

*Continued from previous page...*

Mol	Chain	Res	Type
1	F	203	MET

Sometimes sidechains can be flipped to improve hydrogen bonding and reduce clashes. All (4) such sidechains are listed below:

Mol	Chain	Res	Type
1	B	251	GLN
1	C	251	GLN
1	E	192	GLN
1	E	251	GLN

### 5.3.3 RNA [i](#)

There are no RNA molecules in this entry.

### 5.4 Non-standard residues in protein, DNA, RNA chains [i](#)

There are no non-standard protein/DNA/RNA residues in this entry.

### 5.5 Carbohydrates [i](#)

There are no monosaccharides in this entry.

### 5.6 Ligand geometry [i](#)

20 ligands are modelled in this entry.

In the following table, the Counts columns list the number of bonds (or angles) for which Mogul statistics could be retrieved, the number of bonds (or angles) that are observed in the model and the number of bonds (or angles) that are defined in the Chemical Component Dictionary. The Link column lists molecule types, if any, to which the group is linked. The Z score for a bond length (or angle) is the number of standard deviations the observed value is removed from the expected value. A bond length (or angle) with  $|Z| > 2$  is considered an outlier worth inspection. RMSZ is the root-mean-square of all Z scores of the bond lengths (or angles).

Mol	Type	Chain	Res	Link	Bond lengths			Bond angles		
					Counts	RMSZ	# Z  > 2	Counts	RMSZ	# Z  > 2
3	GOL	C	257	-	5,5,5	0.30	0	5,5,5	0.47	0
2	DQA	D	253	1	12,12,13	0.92	0	17,18,20	1.91	5 (29%)
2	DQA	C	253	1	12,12,13	0.99	0	17,18,20	1.83	5 (29%)



Mol	Type	Chain	Res	Link	Bond lengths			Bond angles		
					Counts	RMSZ	# Z  > 2	Counts	RMSZ	# Z  > 2
3	GOL	E	256	-	5,5,5	0.35	0	5,5,5	0.40	0
3	GOL	D	255	-	5,5,5	0.41	0	5,5,5	0.28	0
2	DQA	A	253	1	12,12,13	0.74	0	17,18,20	1.80	4 (23%)
2	DQA	F	253	1	12,12,13	0.71	0	17,18,20	1.93	4 (23%)
3	GOL	F	255	-	5,5,5	0.39	0	5,5,5	0.13	0
2	DQA	E	253	1	12,12,13	0.76	0	17,18,20	1.99	4 (23%)
3	GOL	C	255	-	5,5,5	0.36	0	5,5,5	0.31	0
3	GOL	B	254	-	5,5,5	0.39	0	5,5,5	0.22	0
3	GOL	A	254	-	5,5,5	0.32	0	5,5,5	0.35	0
2	DQA	B	253	1	12,12,13	0.91	1 (8%)	17,18,20	1.75	5 (29%)
3	GOL	B	255	-	5,5,5	0.35	0	5,5,5	0.24	0
3	GOL	F	254	-	5,5,5	0.31	0	5,5,5	0.35	0
3	GOL	E	255	-	5,5,5	0.40	0	5,5,5	0.48	0
3	GOL	C	254	-	5,5,5	0.32	0	5,5,5	0.22	0
3	GOL	D	254	-	5,5,5	0.32	0	5,5,5	0.37	0
3	GOL	C	256	-	5,5,5	0.31	0	5,5,5	0.35	0
3	GOL	E	254	-	5,5,5	0.34	0	5,5,5	0.19	0

In the following table, the Chirals column lists the number of chiral outliers, the number of chiral centers analysed, the number of these observed in the model and the number defined in the Chemical Component Dictionary. Similar counts are reported in the Torsion and Rings columns. '-' means no outliers of that kind were identified.

Mol	Type	Chain	Res	Link	Chirals	Torsions	Rings
3	GOL	C	257	-	-	1/4/4/4	-
2	DQA	D	253	1	-	0/6/21/24	0/1/1/1
2	DQA	C	253	1	-	0/6/21/24	0/1/1/1
3	GOL	E	256	-	-	4/4/4/4	-
3	GOL	D	255	-	-	4/4/4/4	-
2	DQA	A	253	1	-	0/6/21/24	0/1/1/1
2	DQA	F	253	1	-	0/6/21/24	0/1/1/1
3	GOL	F	255	-	-	2/4/4/4	-
2	DQA	E	253	1	-	0/6/21/24	0/1/1/1
3	GOL	C	255	-	-	2/4/4/4	-
3	GOL	B	254	-	-	0/4/4/4	-
3	GOL	A	254	-	-	0/4/4/4	-
2	DQA	B	253	1	-	0/6/21/24	0/1/1/1
3	GOL	B	255	-	-	1/4/4/4	-
3	GOL	F	254	-	-	4/4/4/4	-
3	GOL	E	255	-	-	0/4/4/4	-

Continued on next page...

Continued from previous page...

Mol	Type	Chain	Res	Link	Chirals	Torsions	Rings
3	GOL	C	254	-	-	2/4/4/4	-
3	GOL	D	254	-	-	0/4/4/4	-
3	GOL	C	256	-	-	1/4/4/4	-
3	GOL	E	254	-	-	4/4/4/4	-

All (1) bond length outliers are listed below:

Mol	Chain	Res	Type	Atoms	Z	Observed(Å)	Ideal(Å)
2	B	253	DQA	C1-C	-2.02	1.51	1.53

All (27) bond angle outliers are listed below:

Mol	Chain	Res	Type	Atoms	Z	Observed(°)	Ideal(°)
2	F	253	DQA	C5-C6-C1	5.15	118.77	112.24
2	D	253	DQA	C5-C6-C1	4.92	118.48	112.24
2	E	253	DQA	C5-C6-C1	4.89	118.43	112.24
2	C	253	DQA	C5-C6-C1	4.31	117.70	112.24
2	A	253	DQA	C5-C6-C1	4.25	117.62	112.24
2	F	253	DQA	C6-C5-C4	3.72	118.94	111.72
2	B	253	DQA	C5-C4-C3	3.51	113.93	111.12
2	E	253	DQA	C5-C4-C3	3.48	113.91	111.12
2	A	253	DQA	O2-C-C1	3.38	118.92	113.05
2	E	253	DQA	O2-C-C1	3.27	118.74	113.05
2	C	253	DQA	C5-C4-C3	3.15	113.64	111.12
2	B	253	DQA	C5-C6-C1	3.15	116.23	112.24
2	D	253	DQA	C5-C4-C3	3.14	113.64	111.12
2	F	253	DQA	O2-C-C1	3.14	118.51	113.05
2	D	253	DQA	C6-C5-C4	2.92	117.38	111.72
2	A	253	DQA	C6-C5-C4	2.87	117.28	111.72
2	E	253	DQA	C6-C5-C4	2.77	117.09	111.72
2	B	253	DQA	O2-C-C1	2.73	117.80	113.05
2	C	253	DQA	C6-C5-C4	2.57	116.70	111.72
2	D	253	DQA	O2-C-C1	2.44	117.28	113.05
2	C	253	DQA	O2-C-C1	2.36	117.14	113.05
2	D	253	DQA	C6-C1-C	-2.30	105.05	109.92
2	A	253	DQA	O1-C-C1	-2.28	119.02	122.25
2	C	253	DQA	C2-C3-C4	-2.27	108.75	111.36
2	B	253	DQA	C6-C5-C4	2.18	115.94	111.72
2	B	253	DQA	C6-C1-C	-2.05	105.59	109.92
2	F	253	DQA	C5-C4-C3	2.01	112.73	111.12

There are no chirality outliers.

All (25) torsion outliers are listed below:

Mol	Chain	Res	Type	Atoms
3	C	254	GOL	O1-C1-C2-O2
3	C	255	GOL	O1-C1-C2-C3
3	E	254	GOL	O1-C1-C2-O2
3	E	254	GOL	O1-C1-C2-C3
3	E	256	GOL	O1-C1-C2-O2
3	E	256	GOL	O1-C1-C2-C3
3	E	256	GOL	C1-C2-C3-O3
3	F	254	GOL	O1-C1-C2-O2
3	F	254	GOL	O1-C1-C2-C3
3	F	255	GOL	O1-C1-C2-O2
3	F	255	GOL	O1-C1-C2-C3
3	C	254	GOL	O1-C1-C2-C3
3	D	255	GOL	O1-C1-C2-C3
3	D	255	GOL	C1-C2-C3-O3
3	E	254	GOL	C1-C2-C3-O3
3	F	254	GOL	C1-C2-C3-O3
3	D	255	GOL	O2-C2-C3-O3
3	E	256	GOL	O2-C2-C3-O3
3	F	254	GOL	O2-C2-C3-O3
3	C	255	GOL	O1-C1-C2-O2
3	D	255	GOL	O1-C1-C2-O2
3	C	256	GOL	C1-C2-C3-O3
3	C	257	GOL	O1-C1-C2-C3
3	E	254	GOL	O2-C2-C3-O3
3	B	255	GOL	O1-C1-C2-C3

There are no ring outliers.

1 monomer is involved in 3 short contacts:

Mol	Chain	Res	Type	Clashes	Symm-Clashes
3	F	254	GOL	3	0

## 5.7 Other polymers [\(i\)](#)

There are no such residues in this entry.

## 5.8 Polymer linkage issues [\(i\)](#)

There are no chain breaks in this entry.

## 6 Fit of model and data [i](#)

### 6.1 Protein, DNA and RNA chains [i](#)

In the following table, the column labelled ‘#RSRZ> 2’ contains the number (and percentage) of RSRZ outliers, followed by percent RSRZ outliers for the chain as percentile scores relative to all X-ray entries and entries of similar resolution. The OWAB column contains the minimum, median, 95<sup>th</sup> percentile and maximum values of the occupancy-weighted average B-factor per residue. The column labelled ‘Q< 0.9’ lists the number of (and percentage) of residues with an average occupancy less than 0.9.

Mol	Chain	Analysed	<RSRZ>	#RSRZ>2	OWAB(Å <sup>2</sup> )	Q<0.9
1	A	251/255 (98%)	-0.22	4 (1%) 72 79	18, 26, 39, 50	0
1	B	251/255 (98%)	-0.28	1 (0%) 92 95	16, 22, 36, 47	0
1	C	251/255 (98%)	-0.35	1 (0%) 92 95	15, 21, 35, 43	0
1	D	252/255 (98%)	-0.33	4 (1%) 72 79	16, 23, 36, 54	0
1	E	251/255 (98%)	-0.28	1 (0%) 92 95	16, 27, 39, 45	0
1	F	251/255 (98%)	-0.30	3 (1%) 79 84	16, 23, 34, 49	0
All	All	1507/1530 (98%)	-0.29	14 (0%) 84 89	15, 23, 37, 54	0

All (14) RSRZ outliers are listed below:

Mol	Chain	Res	Type	RSRZ
1	D	252	ALA	3.8
1	A	39	GLU	3.2
1	B	39	GLU	3.1
1	F	74[A]	ASP	3.0
1	A	35	LEU	2.9
1	F	39	GLU	2.8
1	D	1	MET	2.5
1	D	39	GLU	2.4
1	F	35	LEU	2.4
1	A	72	ILE	2.3
1	A	62	LEU	2.3
1	D	8	ASP	2.1
1	C	121	ASP	2.1
1	E	146	HIS	2.1

### 6.2 Non-standard residues in protein, DNA, RNA chains [i](#)

There are no non-standard protein/DNA/RNA residues in this entry.

### 6.3 Carbohydrates [i](#)

There are no monosaccharides in this entry.

### 6.4 Ligands [i](#)

In the following table, the Atoms column lists the number of modelled atoms in the group and the number defined in the chemical component dictionary. The B-factors column lists the minimum, median, 95<sup>th</sup> percentile and maximum values of B factors of atoms in the group. The column labelled 'Q< 0.9' lists the number of atoms with occupancy less than 0.9.

Mol	Type	Chain	Res	Atoms	RSCC	RSR	B-factors(Å <sup>2</sup> )	Q<0.9
3	GOL	E	256	6/6	0.75	0.26	59,61,61,62	0
3	GOL	F	255	6/6	0.79	0.19	66,66,67,67	0
3	GOL	D	255	6/6	0.82	0.16	57,60,62,62	0
3	GOL	C	257	6/6	0.83	0.24	31,39,40,42	0
3	GOL	E	254	6/6	0.85	0.14	57,58,58,60	0
3	GOL	F	254	6/6	0.86	0.22	23,40,44,45	0
3	GOL	B	255	6/6	0.88	0.31	50,52,52,58	0
3	GOL	B	254	6/6	0.89	0.23	29,39,44,50	0
3	GOL	C	255	6/6	0.89	0.26	42,46,49,50	0
3	GOL	C	256	6/6	0.89	0.15	35,42,45,51	0
3	GOL	E	255	6/6	0.91	0.21	59,60,61,61	0
3	GOL	C	254	6/6	0.92	0.15	39,40,42,42	0
3	GOL	A	254	6/6	0.94	0.20	36,44,47,51	0
2	DQA	E	253	12/13	0.95	0.10	21,22,26,26	0
2	DQA	A	253	12/13	0.96	0.12	20,23,24,30	0
2	DQA	B	253	12/13	0.96	0.13	17,19,21,29	0
2	DQA	D	253	12/13	0.97	0.11	17,21,23,23	0
3	GOL	D	254	6/6	0.97	0.08	28,32,32,33	0
2	DQA	C	253	12/13	0.97	0.15	13,19,21,24	0
2	DQA	F	253	12/13	0.97	0.14	17,19,21,27	0

### 6.5 Other polymers [i](#)

There are no such residues in this entry.