



# Full wwPDB X-ray Structure Validation Report ⓘ

Aug 27, 2023 – 11:00 PM EDT

PDB ID : 3KOU  
Title : Structural insights into the catalytic mechanism of CD38: Evidence for a conformationally flexible covalent enzyme-substrate complex.  
Authors : Egea, P.F.; Muller-Steffner, H.; Stroud, R.M.; Oppenheimer, N.J.; Kellenberger, E.; Schuber, F.  
Deposited on : 2009-11-13  
Resolution : 1.78 Å(reported)

This is a Full wwPDB X-ray Structure Validation Report for a publicly released PDB entry.

We welcome your comments at [validation@mail.wwpdb.org](mailto:validation@mail.wwpdb.org)

A user guide is available at

<https://www.wwpdb.org/validation/2017/XrayValidationReportHelp>

with specific help available everywhere you see the ⓘ symbol.

The types of validation reports are described at

<http://www.wwpdb.org/validation/2017/FAQs#types>.

---

The following versions of software and data (see [references ⓘ](#)) were used in the production of this report:

MolProbity : 4.02b-467  
Mogul : 1.8.5 (274361), CSD as541be (2020)  
Xtriage (Phenix) : 1.13  
EDS : 2.35  
buster-report : 1.1.7 (2018)  
Percentile statistics : 20191225.v01 (using entries in the PDB archive December 25th 2019)  
Refmac : 5.8.0158  
CCP4 : 7.0.044 (Gargrove)  
Ideal geometry (proteins) : Engh & Huber (2001)  
Ideal geometry (DNA, RNA) : Parkinson et al. (1996)  
Validation Pipeline (wwPDB-VP) : 2.35

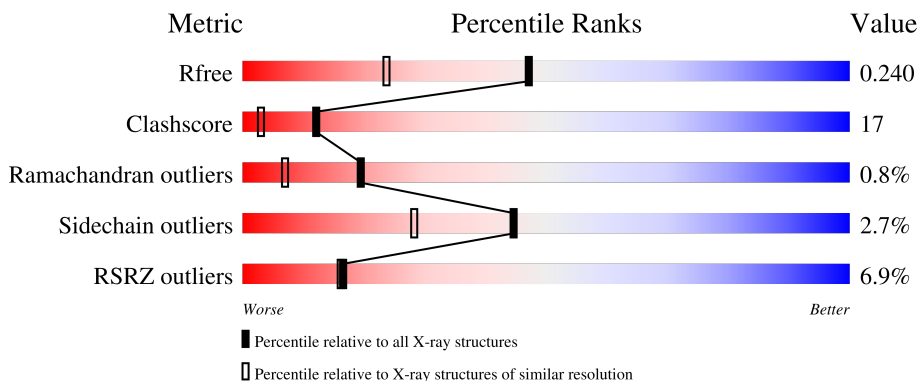
# 1 Overall quality at a glance

The following experimental techniques were used to determine the structure:

*X-RAY DIFFRACTION*

The reported resolution of this entry is 1.78 Å.

Percentile scores (ranging between 0-100) for global validation metrics of the entry are shown in the following graphic. The table shows the number of entries on which the scores are based.



Metric	Whole archive (#Entries)	Similar resolution (#Entries, resolution range(Å))
$R_{free}$	130704	9185 (1.80-1.76)
Clashscore	141614	10184 (1.80-1.76)
Ramachandran outliers	138981	10051 (1.80-1.76)
Sidechain outliers	138945	10050 (1.80-1.76)
RSRZ outliers	127900	9032 (1.80-1.76)

The table below summarises the geometric issues observed across the polymeric chains and their fit to the electron density. The red, orange, yellow and green segments of the lower bar indicate the fraction of residues that contain outliers for  $\geq 3$ , 2, 1 and 0 types of geometric quality criteria respectively. A grey segment represents the fraction of residues that are not modelled. The numeric value for each fraction is indicated below the corresponding segment, with a dot representing fractions  $\leq 5\%$ . The upper red bar (where present) indicates the fraction of residues that have poor fit to the electron density. The numeric value is given above the bar.

Mol	Chain	Length	Quality of chain
1	A	247	
1	B	247	
2	C	2	

The following table lists non-polymeric compounds, carbohydrate monomers and non-standard

residues in protein, DNA, RNA chains that are outliers for geometric or electron-density-fit criteria:

Mol	Type	Chain	Res	Chirality	Geometry	Clashes	Electron density
2	NAG	C	1	-	-	X	-
4	2NF	B	502	X	-	-	-

## 2 Entry composition [i](#)

There are 6 unique types of molecules in this entry. The entry contains 4295 atoms, of which 0 are hydrogens and 0 are deuteriums.

In the tables below, the ZeroOcc column contains the number of atoms modelled with zero occupancy, the AltConf column contains the number of residues with at least one atom in alternate conformation and the Trace column contains the number of residues modelled with at most 2 atoms.

- Molecule 1 is a protein called CD38 molecule.

Mol	Chain	Residues	Atoms					ZeroOcc	AltConf	Trace
			Total	C	N	O	S			
1	A	237	1923	1201	348	358	16	0	5	0
1	B	238	1907	1190	345	356	16	0	2	0

- Molecule 2 is an oligosaccharide called 2-acetamido-2-deoxy-beta-D-glucopyranose-(1-4)-2-acetamido-2-deoxy-beta-D-glucopyranose.



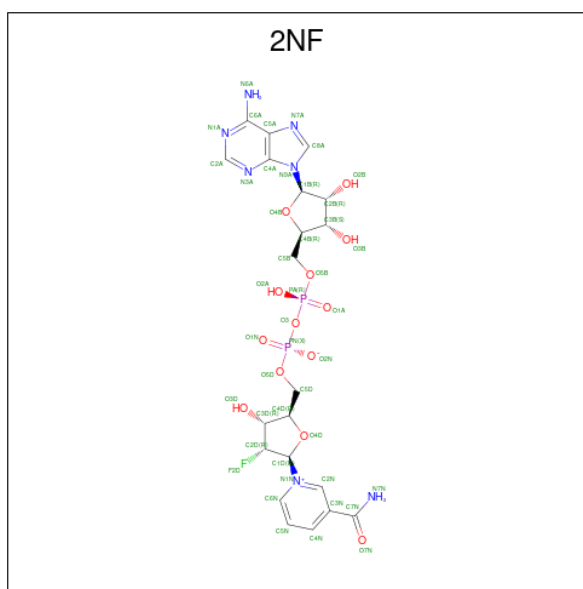
Mol	Chain	Residues	Atoms				ZeroOcc	AltConf	Trace
			Total	C	N	O			
2	C	2	28	16	2	10	0	0	0

- Molecule 3 is SULFATE ION (three-letter code: SO4) (formula: O<sub>4</sub>S).



Mol	Chain	Residues	Atoms	ZeroOcc	AltConf		
3	A	1	Total	O	S	0	0
			5	4	1		
3	B	1	Total	O	S	0	0
			5	4	1		

- Molecule 4 is [[(2R,3S,4R,5R)-5-(6-aminopurin-9-yl)-3,4-dihydroxyoxolan-2-yl]methoxy-hydroxyphosphoryl] [(2R,3S,4R,5R)-5-(3-carbamoylpyridin-1-ium-1-yl)-3-fluoro-,4-hydroxyoxolan-2-yl]methyl phosphate (three-letter code: 2NF) (formula: C<sub>21</sub>H<sub>26</sub>FN<sub>7</sub>O<sub>13</sub>P<sub>2</sub>).



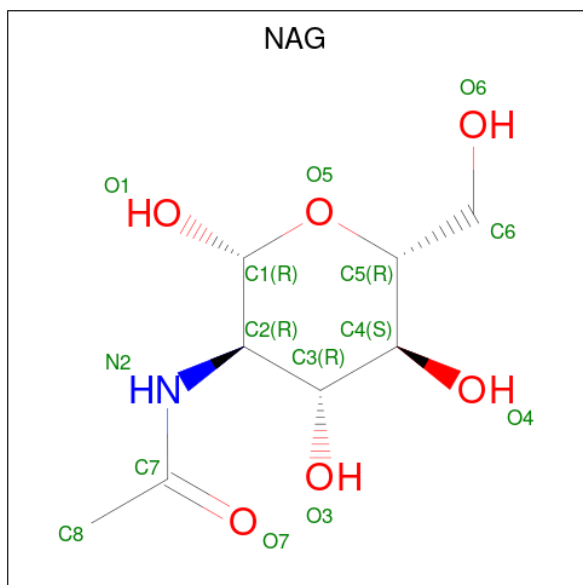
Mol	Chain	Residues	Atoms	ZeroOcc	AltConf				
4	A	1	Total	C	F	O	P	0	0
			17	5	1	9	2		

Continued on next page...

Continued from previous page...

Mol	Chain	Residues	Atoms						ZeroOcc	AltConf
			Total	C	F	N	O	P		
4	B	1	35	15	1	5	12	2	0	0

- Molecule 5 is 2-acetamido-2-deoxy-beta-D-glucopyranose (three-letter code: NAG) (formula:  $C_8H_{15}NO_6$ ).



Mol	Chain	Residues	Atoms				ZeroOcc	AltConf
			Total	C	N	O		
5	B	1	14	8	1	5	0	0

- Molecule 6 is water.

Mol	Chain	Residues	Atoms	ZeroOcc	AltConf
6	A	218	Total O 218 218	0	0
6	B	143	Total O 143 143	0	0



## 4 Data and refinement statistics

Property	Value	Source
Space group	P 21 21 21	Depositor
Cell constants a, b, c, $\alpha$ , $\beta$ , $\gamma$	46.72Å 81.29Å 150.91Å 90.00° 90.00° 90.00°	Depositor
Resolution (Å)	40.64 – 1.78 50.30 – 1.78	Depositor EDS
% Data completeness (in resolution range)	92.1 (40.64-1.78) 92.1 (50.30-1.78)	Depositor EDS
$R_{merge}$	0.10	Depositor
$R_{sym}$	0.10	Depositor
$\langle I/\sigma(I) \rangle$ <sup>1</sup>	1.66 (at 1.78Å)	Xtrriage
Refinement program	PHENIX (phenix.refine)	Depositor
R, $R_{free}$	0.200 , 0.243 0.196 , 0.240	Depositor DCC
$R_{free}$ test set	4018 reflections (7.77%)	wwPDB-VP
Wilson B-factor (Å <sup>2</sup> )	20.7	Xtrriage
Anisotropy	0.193	Xtrriage
Bulk solvent $k_{sol}$ (e/Å <sup>3</sup> ), $B_{sol}$ (Å <sup>2</sup> )	0.34 , 52.9	EDS
L-test for twinning <sup>2</sup>	$\langle  L  \rangle = 0.49$ , $\langle L^2 \rangle = 0.32$	Xtrriage
Estimated twinning fraction	No twinning to report.	Xtrriage
$F_o, F_c$ correlation	0.95	EDS
Total number of atoms	4295	wwPDB-VP
Average B, all atoms (Å <sup>2</sup> )	27.0	wwPDB-VP

Xtrriage's analysis on translational NCS is as follows: *The largest off-origin peak in the Patterson function is 4.62% of the height of the origin peak. No significant pseudotranslation is detected.*

<sup>1</sup>Intensities estimated from amplitudes.

<sup>2</sup>Theoretical values of  $\langle |L| \rangle$ ,  $\langle L^2 \rangle$  for acentric reflections are 0.5, 0.333 respectively for untwinned datasets, and 0.375, 0.2 for perfectly twinned datasets.



## 5 Model quality

### 5.1 Standard geometry

Bond lengths and bond angles in the following residue types are not validated in this section: SO4, NAG, 2NF

The Z score for a bond length (or angle) is the number of standard deviations the observed value is removed from the expected value. A bond length (or angle) with  $|Z| > 5$  is considered an outlier worth inspection. RMSZ is the root-mean-square of all Z scores of the bond lengths (or angles).

Mol	Chain	Bond lengths		Bond angles	
		RMSZ	# Z  >5	RMSZ	# Z  >5
1	A	0.56	0/1968	0.61	0/2659
1	B	0.44	0/1952	0.57	0/2639
All	All	0.51	0/3920	0.59	0/5298

There are no bond length outliers.

There are no bond angle outliers.

There are no chirality outliers.

There are no planarity outliers.

### 5.2 Too-close contacts

In the following table, the Non-H and H(model) columns list the number of non-hydrogen atoms and hydrogen atoms in the chain respectively. The H(added) column lists the number of hydrogen atoms added and optimized by MolProbity. The Clashes column lists the number of clashes within the asymmetric unit, whereas Symm-Clashes lists symmetry-related clashes.

Mol	Chain	Non-H	H(model)	H(added)	Clashes	Symm-Clashes
1	A	1923	0	1871	72	1
1	B	1907	0	1849	65	0
2	C	28	0	25	7	0
3	A	5	0	0	0	0
3	B	5	0	0	0	0
4	A	17	0	6	1	0
4	B	35	0	18	0	0
5	B	14	0	13	3	0
6	A	218	0	0	14	1
6	B	143	0	0	7	0
All	All	4295	0	3782	132	1

The all-atom clashscore is defined as the number of clashes found per 1000 atoms (including hydrogen atoms). The all-atom clashscore for this structure is 17.

All (132) close contacts within the same asymmetric unit are listed below, sorted by their clash magnitude.

Atom-1	Atom-2	Interatomic distance (Å)	Clash overlap (Å)
1:A:201:ASN:HD21	2:C:1:NAG:C1	0.89	1.51
1:B:201:ASN:HD21	5:B:501:NAG:C1	1.29	1.44
1:A:201:ASN:ND2	2:C:1:NAG:C1	1.72	1.41
1:B:201:ASN:ND2	5:B:501:NAG:C1	2.07	1.17
1:A:41:ARG:N	6:A:809:HOH:O	1.77	1.16
1:B:41:ARG:HG2	1:B:41:ARG:HH11	1.21	1.00
1:B:39:LEU:O	1:B:163:TRP:CB	2.18	0.91
1:A:41:ARG:CG	6:A:749:HOH:O	2.19	0.90
1:A:201:ASN:HD21	2:C:1:NAG:C2	1.86	0.86
1:A:236:THR:HG22	1:A:237:GLY:H	1.37	0.86
1:A:56:GLN:NE2	1:A:79:ARG:HE	1.74	0.86
1:B:39:LEU:O	1:B:163:TRP:HB2	1.76	0.86
1:A:117:PHE:HE2	1:A:196[A]:VAL:HG11	1.44	0.81
1:B:41:ARG:HH11	1:B:41:ARG:CG	1.95	0.80
1:B:201:ASN:HD21	5:B:501:NAG:C2	1.94	0.80
1:A:201:ASN:CG	2:C:1:NAG:C1	2.51	0.78
1:A:168:TRP:CZ3	1:A:169:ARG:HG2	2.20	0.77
1:B:248:SER:HA	1:B:251:LYS:HE2	1.67	0.76
1:A:117:PHE:CE2	1:A:196[A]:VAL:HG11	2.22	0.75
1:B:191:SER:HB2	6:B:625:HOH:O	1.86	0.75
1:A:56:GLN:HE21	1:A:79:ARG:HE	1.33	0.74
1:B:41:ARG:HG2	1:B:41:ARG:NH1	1.95	0.73
1:A:187:ARG:HG2	6:A:713:HOH:O	1.91	0.69
1:A:41:ARG:HG3	6:A:749:HOH:O	1.87	0.68
1:B:39:LEU:O	1:B:163:TRP:HB3	1.96	0.66
1:A:41:ARG:CB	6:A:749:HOH:O	2.45	0.65
1:B:234:HIS:CD2	1:B:240:PRO:HG3	2.31	0.65
1:A:122:LYS:HD2	6:A:804:HOH:O	1.98	0.64
1:B:108:PRO:HD2	1:B:187:ARG:HG2	1.82	0.62
1:A:197:ARG:HD2	6:A:619:HOH:O	2.00	0.61
1:A:69:GLY:C	1:A:70:SER:O	2.30	0.61
1:B:247:SER:HA	1:B:250:ARG:HE	1.65	0.61
1:B:235:ASP:OD1	1:B:271:ARG:NH1	2.33	0.61
1:A:175:ASN:ND2	1:A:178:SER:H	1.97	0.60
1:A:52:GLN:HG3	1:A:79:ARG:CD	2.30	0.60
1:A:168:TRP:CE3	1:A:169:ARG:HG2	2.36	0.60
1:B:40:ASN:HB2	1:B:163:TRP:CE3	2.38	0.59

*Continued on next page...*

*Continued from previous page...*

Atom-1	Atom-2	Interatomic distance (Å)	Clash overlap (Å)
1:A:52:GLN:CG	1:A:79:ARG:HD3	2.33	0.58
1:A:221:ASN:ND2	1:B:71:ARG:HH22	2.01	0.58
1:A:236:THR:HB	1:A:238:LYS:HG3	1.85	0.58
1:B:83:MET:HE3	1:B:87:ILE:HD13	1.85	0.57
1:A:43:HIS:HD2	1:A:171:ASP:OD1	1.86	0.57
1:A:175:ASN:HD21	1:A:178:SER:H	1.52	0.57
1:A:219:ALA:HB3	1:A:220:PRO:HD3	1.88	0.56
1:B:223:ARG:NH1	6:B:683:HOH:O	2.02	0.55
1:A:52:GLN:HG3	1:A:79:ARG:HD2	1.89	0.54
1:B:262:LYS:NZ	1:B:264:ARG:HH11	2.06	0.54
1:A:67:ARG:HH22	1:A:111:PRO:HD3	1.73	0.54
1:B:167:ASP:O	1:B:171:ASP:HB2	2.08	0.54
1:A:56:GLN:NE2	1:A:79:ARG:NE	2.50	0.53
1:A:262:LYS:HG3	6:A:679:HOH:O	2.08	0.53
1:B:168:TRP:HA	1:B:172:CYS:O	2.08	0.53
1:B:110:VAL:CG2	1:B:115:GLN:HG3	2.38	0.53
1:A:52:GLN:HG2	1:A:79:ARG:HD3	1.90	0.53
1:A:228:LEU:HD23	1:A:256:LEU:HD11	1.91	0.53
1:A:236:THR:HG22	1:A:237:GLY:N	2.15	0.53
1:B:220:PRO:O	1:B:259:ARG:HD3	2.09	0.53
1:A:168:TRP:CE3	1:A:169:ARG:CG	2.92	0.53
1:B:224:PRO:O	1:B:225:GLN:HB2	2.10	0.52
1:A:272:ASP:O	1:A:276:GLN:HB3	2.10	0.52
1:B:161:ASN:OD1	1:B:163:TRP:HB2	2.10	0.52
1:B:219:ALA:HB3	1:B:220:PRO:HD3	1.91	0.52
1:A:196[B]:VAL:HG23	1:A:228:LEU:CD1	2.40	0.51
1:B:178:SER:O	1:B:182:GLU:HG2	2.11	0.51
1:A:109:THR:CG2	1:B:223:ARG:CZ	2.89	0.51
1:A:51:PHE:HB3	1:A:160:LEU:HD11	1.92	0.51
1:A:69:GLY:O	1:A:70:SER:O	2.28	0.51
1:A:274:PHE:O	1:A:277:ARG:HG2	2.10	0.51
1:B:175:ASN:ND2	1:B:178:SER:H	2.09	0.51
1:A:124:LEU:HD13	1:A:271:ARG:HG3	1.93	0.50
1:A:221:ASN:HD21	1:B:71:ARG:NH2	2.08	0.50
1:B:269:LEU:N	1:B:269:LEU:HD12	2.25	0.50
1:B:162:ILE:HD12	1:B:163:TRP:N	2.27	0.50
1:A:221:ASN:ND2	1:B:71:ARG:NH2	2.60	0.50
1:B:234:HIS:HD2	6:B:695:HOH:O	1.95	0.50
1:A:235:ASP:HB2	1:A:238:LYS:HD2	1.94	0.49
1:B:91:PRO:HB2	1:B:166:PRO:HG2	1.94	0.49
1:A:117:PHE:CE2	1:A:196[A]:VAL:CG1	2.95	0.49

*Continued on next page...*

*Continued from previous page...*

Atom-1	Atom-2	Interatomic distance (Å)	Clash overlap (Å)
1:A:168:TRP:CZ3	1:A:169:ARG:CG	2.94	0.49
1:B:196:VAL:HG23	1:B:228:LEU:CD1	2.43	0.49
1:A:63:THR:O	1:A:68:PRO:HA	2.12	0.49
1:B:154:GLU:OE2	1:B:155:PRO:HD2	2.12	0.49
1:A:201:ASN:ND2	2:C:1:NAG:C2	2.60	0.48
1:A:52:GLN:HG3	1:A:79:ARG:HD3	1.94	0.48
1:B:91:PRO:HG3	1:B:153:GLY:O	2.13	0.48
1:A:67:ARG:HD3	6:A:799:HOH:O	2.14	0.47
1:B:113:GLY:HA2	1:B:195:THR:O	2.14	0.47
1:B:236:THR:HA	1:B:237:GLY:HA2	1.63	0.47
1:A:69:GLY:O	1:A:70:SER:C	2.53	0.47
1:A:118:TRP:O	4:A:503:2NF:H5DA	2.15	0.47
1:B:83:MET:HE1	1:B:160:LEU:HD11	1.95	0.47
1:B:196:VAL:HG23	1:B:228:LEU:HD12	1.95	0.47
1:A:236:THR:CG2	1:A:237:GLY:H	2.06	0.47
1:A:201:ASN:ND2	2:C:1:NAG:O5	2.40	0.47
1:B:162:ILE:H	1:B:162:ILE:HG13	1.43	0.47
1:B:269:LEU:HB2	1:B:273:GLN:HB2	1.97	0.46
1:B:115:GLN:OE1	1:B:192:ALA:HA	2.15	0.46
1:A:41:ARG:HB2	6:A:749:HOH:O	2.12	0.46
1:A:41:ARG:HG2	6:A:749:HOH:O	2.03	0.46
1:A:52:GLN:CG	1:A:79:ARG:CD	2.93	0.46
1:A:168:TRP:HZ3	1:A:169:ARG:HG2	1.74	0.46
1:B:50:ASP:O	1:B:54:ILE:HG13	2.15	0.46
1:B:115:GLN:HB2	6:B:642:HOH:O	2.16	0.46
1:B:196:VAL:HG12	6:B:642:HOH:O	2.15	0.45
1:A:135:MET:HG3	6:A:654:HOH:O	2.16	0.44
1:A:168:TRP:CE2	1:A:173:ARG:HG2	2.52	0.44
1:B:90:ASP:HA	1:B:91:PRO:HD3	1.83	0.44
1:B:266[A]:MET:SD	1:B:266[A]:MET:N	2.91	0.44
1:B:40:ASN:HA	1:B:163:TRP:HB3	1.99	0.44
1:B:43:HIS:CG	1:B:170:LYS:HG2	2.52	0.44
1:A:196[B]:VAL:HG23	1:A:228:LEU:HD12	2.01	0.43
1:B:52:GLN:HG2	1:B:83:MET:SD	2.59	0.43
1:B:269:LEU:HD12	1:B:269:LEU:H	1.84	0.43
1:A:67:ARG:N	1:A:68:PRO:HD3	2.33	0.43
1:A:194:ASN:O	1:A:226:VAL:HB	2.19	0.43
1:A:96:LYS:HG3	6:A:767:HOH:O	2.19	0.42
1:B:53:LYS:NZ	1:B:57:GLU:OE2	2.45	0.42
1:A:41:ARG:N	6:A:664:HOH:O	2.52	0.42
1:B:173:ARG:HB3	1:B:173:ARG:NH1	2.34	0.42

*Continued on next page...*

Continued from previous page...

Atom-1	Atom-2	Interatomic distance (Å)	Clash overlap (Å)
1:A:201:ASN:OD1	2:C:1:NAG:C1	2.67	0.42
1:B:192:ALA:HB1	1:B:196:VAL:HG11	2.02	0.42
1:A:196[B]:VAL:HG23	1:A:228:LEU:HD13	2.02	0.41
1:A:109:THR:HG21	1:B:223:ARG:HD2	2.03	0.41
1:B:73:ARG:NH1	1:B:105:LEU:O	2.53	0.41
1:A:178:SER:O	1:A:182:GLU:HG3	2.21	0.41
1:B:122:LYS:HE3	6:B:713:HOH:O	2.20	0.41
1:B:126:HIS:NE2	1:B:138:GLU:OE1	2.53	0.41
1:B:141:LEU:HD23	1:B:141:LEU:C	2.41	0.41
1:A:56:GLN:HE21	1:A:79:ARG:NE	2.07	0.40
1:B:250:ARG:HG3	6:B:692:HOH:O	2.21	0.40
1:A:62:TYR:HA	1:A:66:ILE:HB	2.03	0.40
1:B:175:ASN:HD22	1:B:177:LEU:H	1.70	0.40

All (1) symmetry-related close contacts are listed below. The label for Atom-2 includes the symmetry operator and encoded unit-cell translations to be applied.

Atom-1	Atom-2	Interatomic distance (Å)	Clash overlap (Å)
1:A:236:THR:O	6:A:665:HOH:O[3_645]	2.17	0.03

## 5.3 Torsion angles [i](#)

### 5.3.1 Protein backbone [i](#)

In the following table, the Percentiles column shows the percent Ramachandran outliers of the chain as a percentile score with respect to all X-ray entries followed by that with respect to entries of similar resolution.

The Analysed column shows the number of residues for which the backbone conformation was analysed, and the total number of residues.

Mol	Chain	Analysed	Favoured	Allowed	Outliers	Percentiles
1	A	240/247 (97%)	232 (97%)	4 (2%)	4 (2%)	9 2
1	B	238/247 (96%)	228 (96%)	10 (4%)	0	100 100
All	All	478/494 (97%)	460 (96%)	14 (3%)	4 (1%)	19 7

All (4) Ramachandran outliers are listed below:

Mol	Chain	Res	Type
1	A	68	PRO
1	A	69	GLY
1	A	70	SER
1	A	236	THR

### 5.3.2 Protein sidechains [i](#)

In the following table, the Percentiles column shows the percent sidechain outliers of the chain as a percentile score with respect to all X-ray entries followed by that with respect to entries of similar resolution.

The Analysed column shows the number of residues for which the sidechain conformation was analysed, and the total number of residues.

Mol	Chain	Analysed	Rotameric	Outliers	Percentiles	
1	A	212/218 (97%)	208 (98%)	4 (2%)	57	43
1	B	210/218 (96%)	202 (96%)	8 (4%)	33	16
All	All	422/436 (97%)	410 (97%)	12 (3%)	44	27

All (12) residues with a non-rotameric sidechain are listed below:

Mol	Chain	Res	Type
1	A	79	ARG
1	A	82	PHE
1	A	132	ARG
1	A	276	GLN
1	B	41	ARG
1	B	82	PHE
1	B	159	ASP
1	B	168	TRP
1	B	197	ARG
1	B	266[A]	MET
1	B	266[B]	MET
1	B	269	LEU

Sometimes sidechains can be flipped to improve hydrogen bonding and reduce clashes. All (12) such sidechains are listed below:

Mol	Chain	Res	Type
1	A	43	HIS
1	A	56	GLN
1	A	175	ASN

*Continued on next page...*

*Continued from previous page...*

Mol	Chain	Res	Type
1	A	206	ASN
1	A	221	ASN
1	A	276	GLN
1	B	175	ASN
1	B	201	ASN
1	B	221	ASN
1	B	225	GLN
1	B	234	HIS
1	B	260	ASN

### 5.3.3 RNA [i](#)

There are no RNA molecules in this entry.

## 5.4 Non-standard residues in protein, DNA, RNA chains [i](#)

There are no non-standard protein/DNA/RNA residues in this entry.

## 5.5 Carbohydrates [i](#)

2 monosaccharides are modelled in this entry.

In the following table, the Counts columns list the number of bonds (or angles) for which Mogul statistics could be retrieved, the number of bonds (or angles) that are observed in the model and the number of bonds (or angles) that are defined in the Chemical Component Dictionary. The Link column lists molecule types, if any, to which the group is linked. The Z score for a bond length (or angle) is the number of standard deviations the observed value is removed from the expected value. A bond length (or angle) with  $|Z| > 2$  is considered an outlier worth inspection. RMSZ is the root-mean-square of all Z scores of the bond lengths (or angles).

Mol	Type	Chain	Res	Link	Bond lengths			Bond angles		
					Counts	RMSZ	$\# Z  > 2$	Counts	RMSZ	$\# Z  > 2$
2	NAG	C	1	2	14,14,15	0.59	0	17,19,21	0.88	0
2	NAG	C	2	2	14,14,15	0.57	0	17,19,21	0.74	0

In the following table, the Chirals column lists the number of chiral outliers, the number of chiral centers analysed, the number of these observed in the model and the number defined in the Chemical Component Dictionary. Similar counts are reported in the Torsion and Rings columns. '2' means no outliers of that kind were identified.

Mol	Type	Chain	Res	Link	Chirals	Torsions	Rings
2	NAG	C	1	2	-	0/6/23/26	0/1/1/1
2	NAG	C	2	2	-	2/6/23/26	0/1/1/1

There are no bond length outliers.

There are no bond angle outliers.

There are no chirality outliers.

All (2) torsion outliers are listed below:

Mol	Chain	Res	Type	Atoms
2	C	2	NAG	O5-C5-C6-O6
2	C	2	NAG	C4-C5-C6-O6

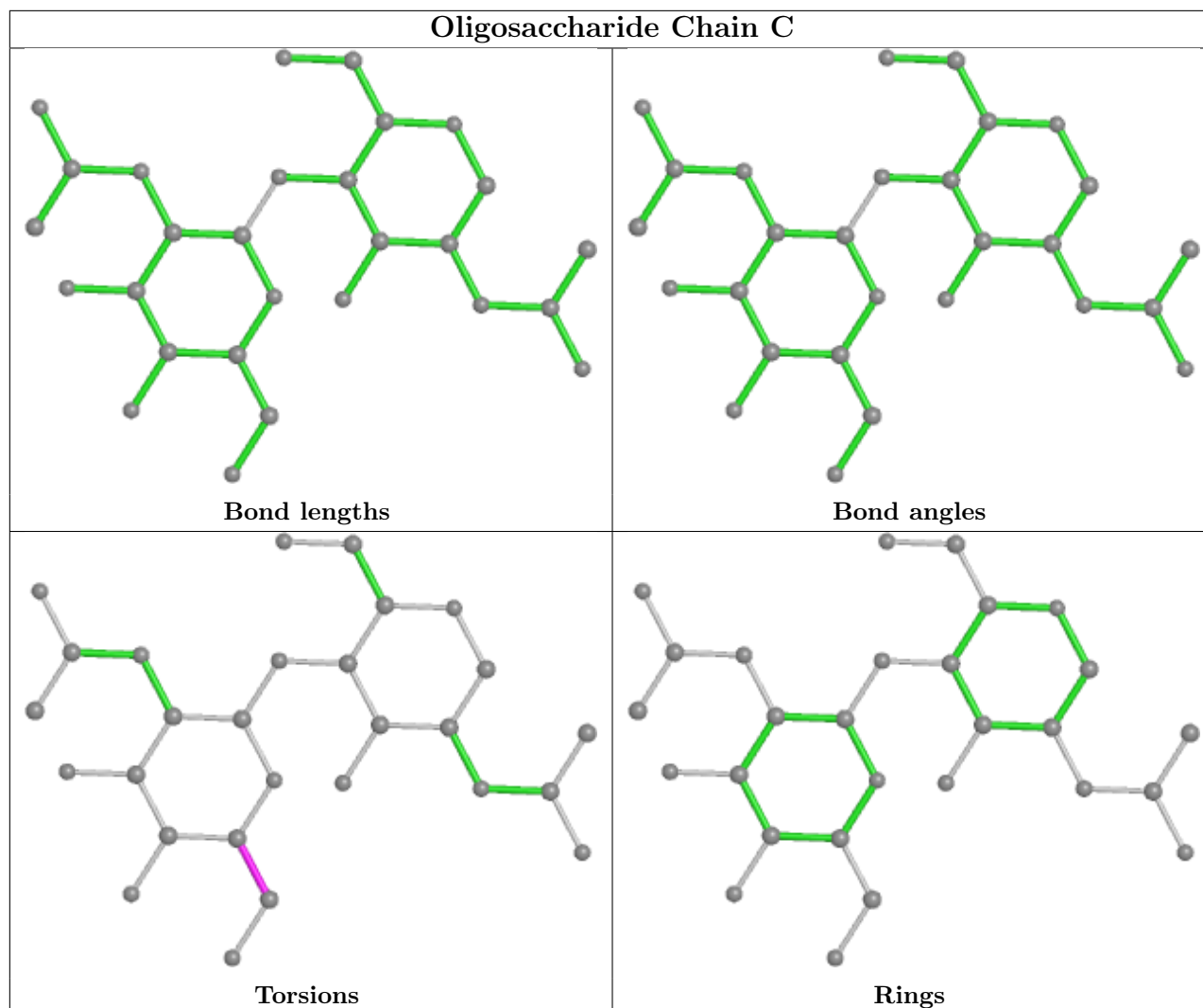
There are no ring outliers.

1 monomer is involved in 7 short contacts:

Mol	Chain	Res	Type	Clashes	Symm-Clashes
2	C	1	NAG	7	0

The following is a two-dimensional graphical depiction of Mogul quality analysis of bond lengths, bond angles, torsion angles, and ring geometry for oligosaccharide.





## 5.6 Ligand geometry [i](#)

5 ligands are modelled in this entry.

In the following table, the Counts columns list the number of bonds (or angles) for which Mogul statistics could be retrieved, the number of bonds (or angles) that are observed in the model and the number of bonds (or angles) that are defined in the Chemical Component Dictionary. The Link column lists molecule types, if any, to which the group is linked. The Z score for a bond length (or angle) is the number of standard deviations the observed value is removed from the expected value. A bond length (or angle) with  $|Z| > 2$  is considered an outlier worth inspection. RMSZ is the root-mean-square of all Z scores of the bond lengths (or angles).

Mol	Type	Chain	Res	Link	Bond lengths			Bond angles		
					Counts	RMSZ	$\# Z  > 2$	Counts	RMSZ	$\# Z  > 2$
4	2NF	A	503	1	15,17,48	2.53	8 (53%)	21,26,73	3.50	5 (23%)
5	NAG	B	501	-	14,14,15	0.70	0	17,19,21	0.60	0
3	SO4	A	500	-	4,4,4	0.12	0	6,6,6	0.13	0

Mol	Type	Chain	Res	Link	Bond lengths			Bond angles		
					Counts	RMSZ	# Z  > 2	Counts	RMSZ	# Z  > 2
4	2NF	B	502	1	33,38,48	1.67	11 (33%)	37,58,73	1.85	5 (13%)
3	SO4	B	500	-	4,4,4	0.14	0	6,6,6	0.09	0

In the following table, the Chirals column lists the number of chiral outliers, the number of chiral centers analysed, the number of these observed in the model and the number defined in the Chemical Component Dictionary. Similar counts are reported in the Torsion and Rings columns. '-' means no outliers of that kind were identified.

Mol	Type	Chain	Res	Link	Chirals	Torsions	Rings
4	2NF	A	503	1	-	5/12/25/62	0/1/1/5
5	NAG	B	501	-	-	2/6/23/26	0/1/1/1
4	2NF	B	502	1	1/1/9/11	5/18/51/62	0/4/4/5

All (19) bond length outliers are listed below:

Mol	Chain	Res	Type	Atoms	Z	Observed(Å)	Ideal(Å)
4	A	503	2NF	O4D-C4D	-4.80	1.36	1.44
4	A	503	2NF	F2D-C2D	-4.00	1.31	1.40
4	A	503	2NF	PA-O1A	-4.00	1.37	1.50
4	A	503	2NF	PN-O2N	-3.37	1.39	1.55
4	B	502	2NF	PN-O1N	-3.24	1.39	1.50
4	B	502	2NF	PN-O2N	-2.89	1.41	1.55
4	A	503	2NF	PA-O5B	-2.84	1.43	1.54
4	A	503	2NF	PA-O2A	-2.72	1.44	1.54
4	B	502	2NF	C2B-C1B	-2.71	1.49	1.53
4	B	502	2NF	O4D-C4D	-2.69	1.40	1.44
4	A	503	2NF	O3D-C3D	-2.58	1.36	1.43
4	B	502	2NF	PA-O2A	-2.52	1.43	1.55
4	B	502	2NF	O4B-C1B	2.49	1.44	1.41
4	B	502	2NF	PA-O1A	-2.39	1.42	1.50
4	B	502	2NF	C2D-C3D	2.30	1.55	1.51
4	B	502	2NF	F2D-C2D	-2.24	1.35	1.40
4	B	502	2NF	O4D-C1D	-2.20	1.39	1.43
4	B	502	2NF	O3D-C3D	-2.07	1.38	1.43
4	A	503	2NF	PN-O1N	-2.02	1.43	1.50

All (10) bond angle outliers are listed below:

Mol	Chain	Res	Type	Atoms	Z	Observed(°)	Ideal(°)
4	A	503	2NF	F2D-C2D-C3D	14.37	121.54	108.57
4	B	502	2NF	F2D-C2D-C3D	5.89	113.89	108.57

*Continued on next page...*

Continued from previous page...

Mol	Chain	Res	Type	Atoms	Z	Observed(°)	Ideal(°)
4	B	502	2NF	N3A-C2A-N1A	-5.16	120.61	128.68
4	A	503	2NF	O3D-C3D-C4D	3.50	121.16	111.05
4	B	502	2NF	C1B-N9A-C4A	-3.44	120.59	126.64
4	A	503	2NF	O5D-C5D-C4D	3.39	120.66	108.99
4	B	502	2NF	O4D-C4D-C3D	2.99	107.35	104.70
4	B	502	2NF	C2B-C3B-C4B	2.50	107.49	102.64
4	A	503	2NF	C1D-O4D-C4D	2.37	113.70	108.16
4	A	503	2NF	C2D-C3D-C4D	2.23	105.27	102.34

All (1) chirality outliers are listed below:

Mol	Chain	Res	Type	Atom
4	B	502	2NF	C1D

All (12) torsion outliers are listed below:

Mol	Chain	Res	Type	Atoms
4	A	503	2NF	C3D-C4D-C5D-O5D
4	A	503	2NF	O4D-C4D-C5D-O5D
4	B	502	2NF	PN-O3-PA-O5B
4	B	502	2NF	C4D-C5D-O5D-PN
4	A	503	2NF	PA-O3-PN-O2N
5	B	501	NAG	C4-C5-C6-O6
4	A	503	2NF	PA-O3-PN-O1N
5	B	501	NAG	O5-C5-C6-O6
4	B	502	2NF	PA-O3-PN-O1N
4	A	503	2NF	C4D-C5D-O5D-PN
4	B	502	2NF	C3D-C4D-C5D-O5D
4	B	502	2NF	O4B-C4B-C5B-O5B

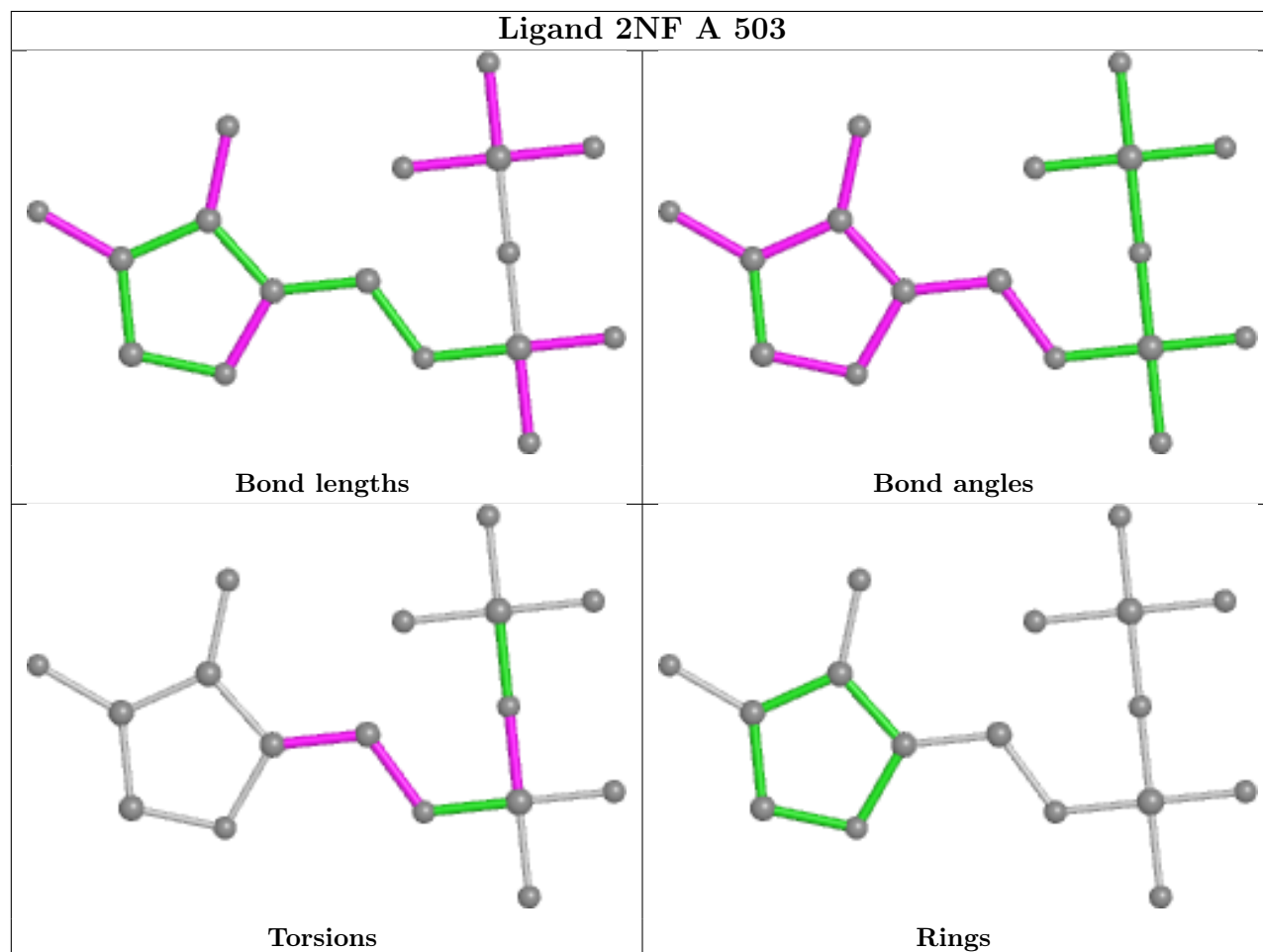
There are no ring outliers.

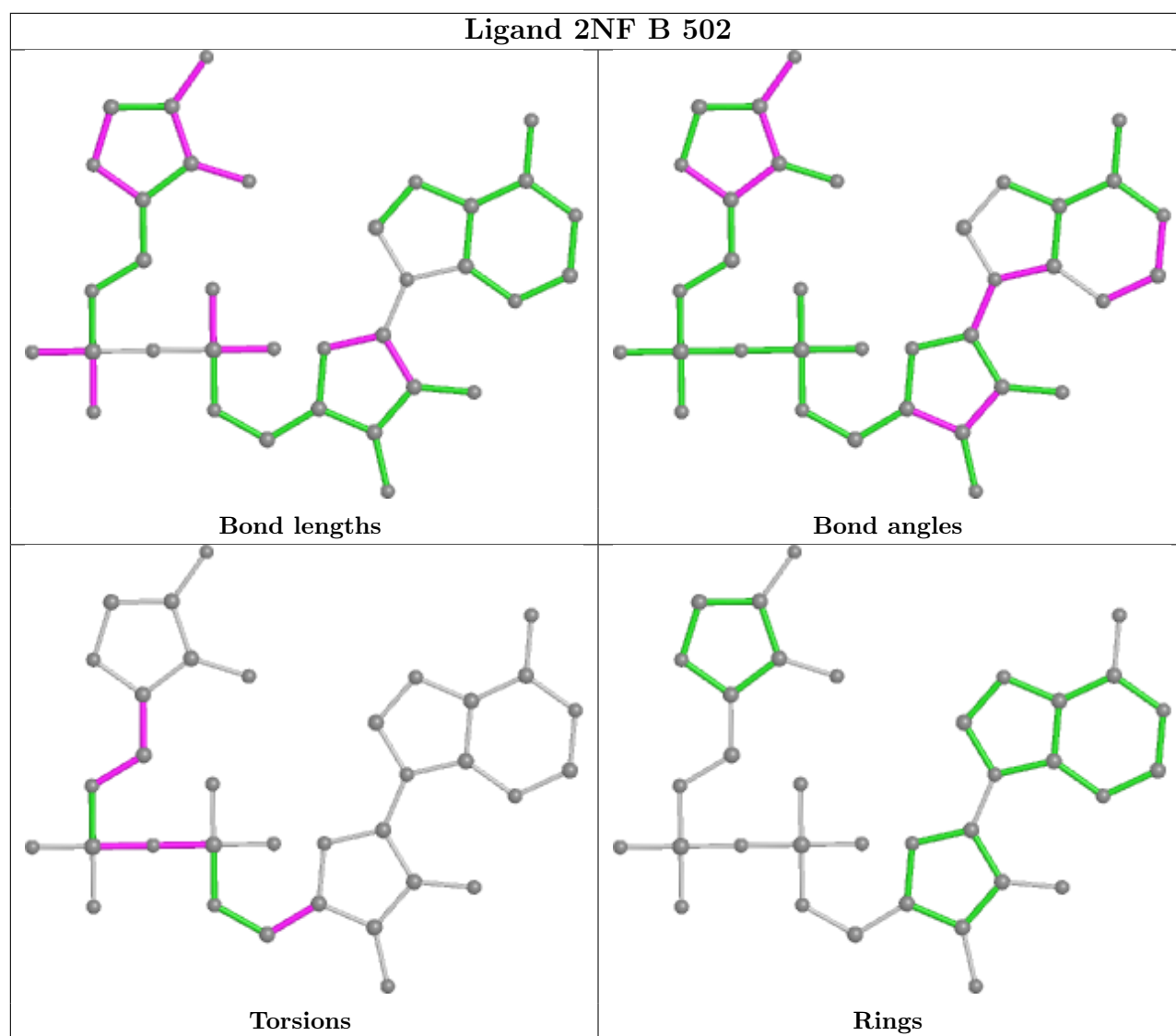
2 monomers are involved in 4 short contacts:

Mol	Chain	Res	Type	Clashes	Symm-Clashes
4	A	503	2NF	1	0
5	B	501	NAG	3	0

The following is a two-dimensional graphical depiction of Mogul quality analysis of bond lengths, bond angles, torsion angles, and ring geometry for all instances of the Ligand of Interest. In addition, ligands with molecular weight > 250 and outliers as shown on the validation Tables will also be included. For torsion angles, if less than 5% of the Mogul distribution of torsion angles is within 10 degrees of the torsion angle in question, then that torsion angle is considered an outlier.

Any bond that is central to one or more torsion angles identified as an outlier by Mogul will be highlighted in the graph. For rings, the root-mean-square deviation (RMSD) between the ring in question and similar rings identified by Mogul is calculated over all ring torsion angles. If the average RMSD is greater than 60 degrees and the minimal RMSD between the ring in question and any Mogul-identified rings is also greater than 60 degrees, then that ring is considered an outlier. The outliers are highlighted in purple. The color gray indicates Mogul did not find sufficient equivalents in the CSD to analyse the geometry.





## 5.7 Other polymers [\(i\)](#)

There are no such residues in this entry.

## 5.8 Polymer linkage issues [\(i\)](#)

There are no chain breaks in this entry.

## 6 Fit of model and data

### 6.1 Protein, DNA and RNA chains

In the following table, the column labelled ‘#RSRZ > 2’ contains the number (and percentage) of RSRZ outliers, followed by percent RSRZ outliers for the chain as percentile scores relative to all X-ray entries and entries of similar resolution. The OWAB column contains the minimum, median, 95<sup>th</sup> percentile and maximum values of the occupancy-weighted average B-factor per residue. The column labelled ‘Q < 0.9’ lists the number of (and percentage) of residues with an average occupancy less than 0.9.

Mol	Chain	Analysed	<RSRZ>	#RSRZ>2	OWAB(Å <sup>2</sup> )	Q<0.9
1	A	237/247 (95%)	0.28	6 (2%) 57 56	8, 18, 42, 71	0
1	B	238/247 (96%)	0.73	27 (11%) 5 4	10, 31, 60, 86	0
All	All	475/494 (96%)	0.50	33 (6%) 16 16	8, 23, 55, 86	0

All (33) RSRZ outliers are listed below:

Mol	Chain	Res	Type	RSRZ
1	B	237	GLY	8.8
1	A	69	GLY	8.1
1	B	39	LEU	6.9
1	A	70	SER	6.9
1	B	163	TRP	6.3
1	A	236	THR	5.4
1	B	168	TRP	4.9
1	B	169	ARG	4.8
1	B	240	PRO	3.6
1	B	238	LYS	3.5
1	B	247	SER	3.5
1	B	156	GLY	3.3
1	B	40	ASN	3.2
1	B	204	LEU	3.0
1	B	46	GLY	3.0
1	B	45	ALA	2.9
1	A	276	GLN	2.8
1	A	168	TRP	2.7
1	B	234	HIS	2.5
1	B	239	PRO	2.5
1	B	202	GLY	2.5
1	B	276	GLN	2.5
1	B	162	ILE	2.4
1	A	169	ARG	2.4

*Continued on next page...*

*Continued from previous page...*

Mol	Chain	Res	Type	RSRZ
1	B	170	LYS	2.3
1	B	206	ASN	2.3
1	B	260	ASN	2.3
1	B	205	GLU	2.2
1	B	243	SER	2.2
1	B	269	LEU	2.2
1	B	235	ASP	2.1
1	B	203	SER	2.0
1	B	233	VAL	2.0

## 6.2 Non-standard residues in protein, DNA, RNA chains [\(i\)](#)

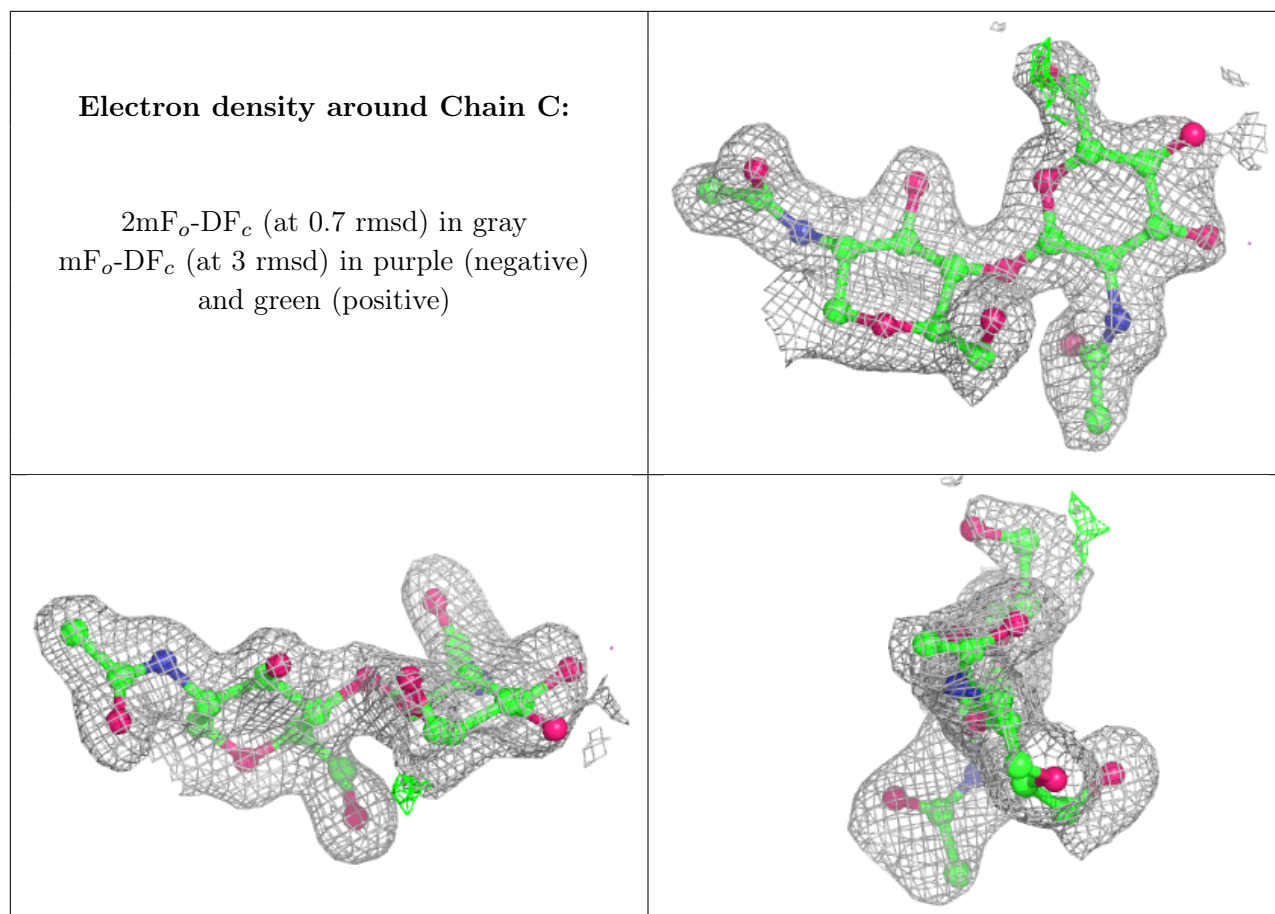
There are no non-standard protein/DNA/RNA residues in this entry.

## 6.3 Carbohydrates [\(i\)](#)

In the following table, the Atoms column lists the number of modelled atoms in the group and the number defined in the chemical component dictionary. The B-factors column lists the minimum, median, 95<sup>th</sup> percentile and maximum values of B factors of atoms in the group. The column labelled 'Q< 0.9' lists the number of atoms with occupancy less than 0.9.

Mol	Type	Chain	Res	Atoms	RSCC	RSR	B-factors(Å <sup>2</sup> )	Q<0.9
2	NAG	C	2	14/15	0.87	0.16	27,44,59,61	0
2	NAG	C	1	14/15	0.92	0.12	18,25,31,39	0

The following is a graphical depiction of the model fit to experimental electron density for oligosaccharide. Each fit is shown from different orientation to approximate a three-dimensional view.



## 6.4 Ligands [i](#)

In the following table, the Atoms column lists the number of modelled atoms in the group and the number defined in the chemical component dictionary. The B-factors column lists the minimum, median, 95<sup>th</sup> percentile and maximum values of B factors of atoms in the group. The column labelled 'Q< 0.9' lists the number of atoms with occupancy less than 0.9.

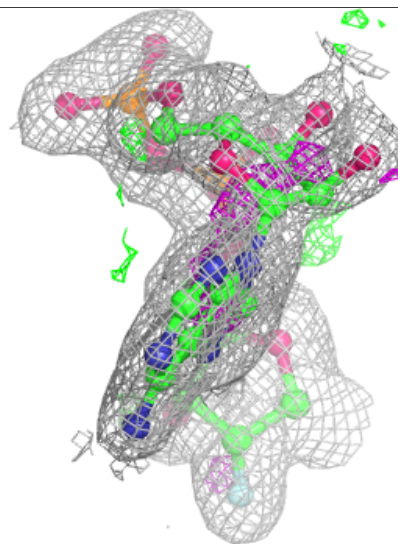
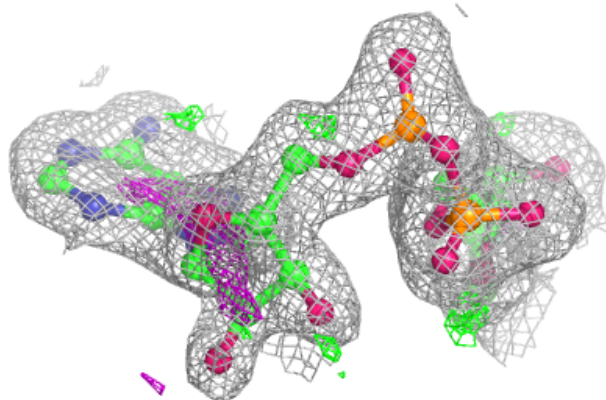
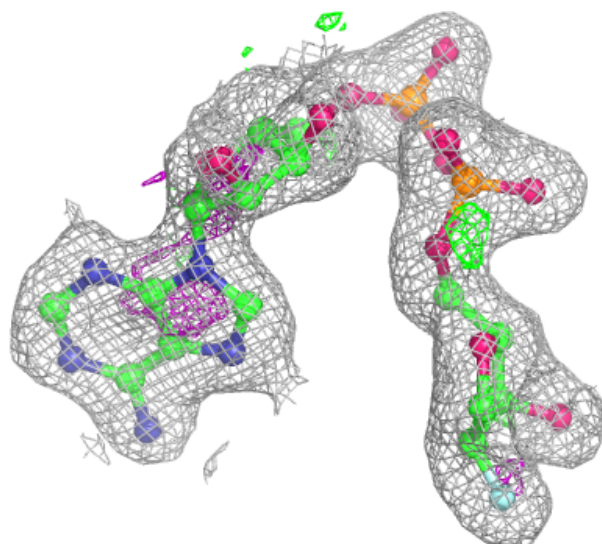
Mol	Type	Chain	Res	Atoms	RSCC	RSR	B-factors(Å <sup>2</sup> )	Q<0.9
3	SO4	B	500	5/5	0.88	0.14	77,80,82,86	0
5	NAG	B	501	14/15	0.88	0.17	41,46,60,62	0
4	2NF	B	502	35/44	0.93	0.12	15,27,40,40	0
3	SO4	A	500	5/5	0.96	0.13	43,50,56,56	0
4	2NF	A	503	17/44	0.96	0.09	8,14,24,35	0

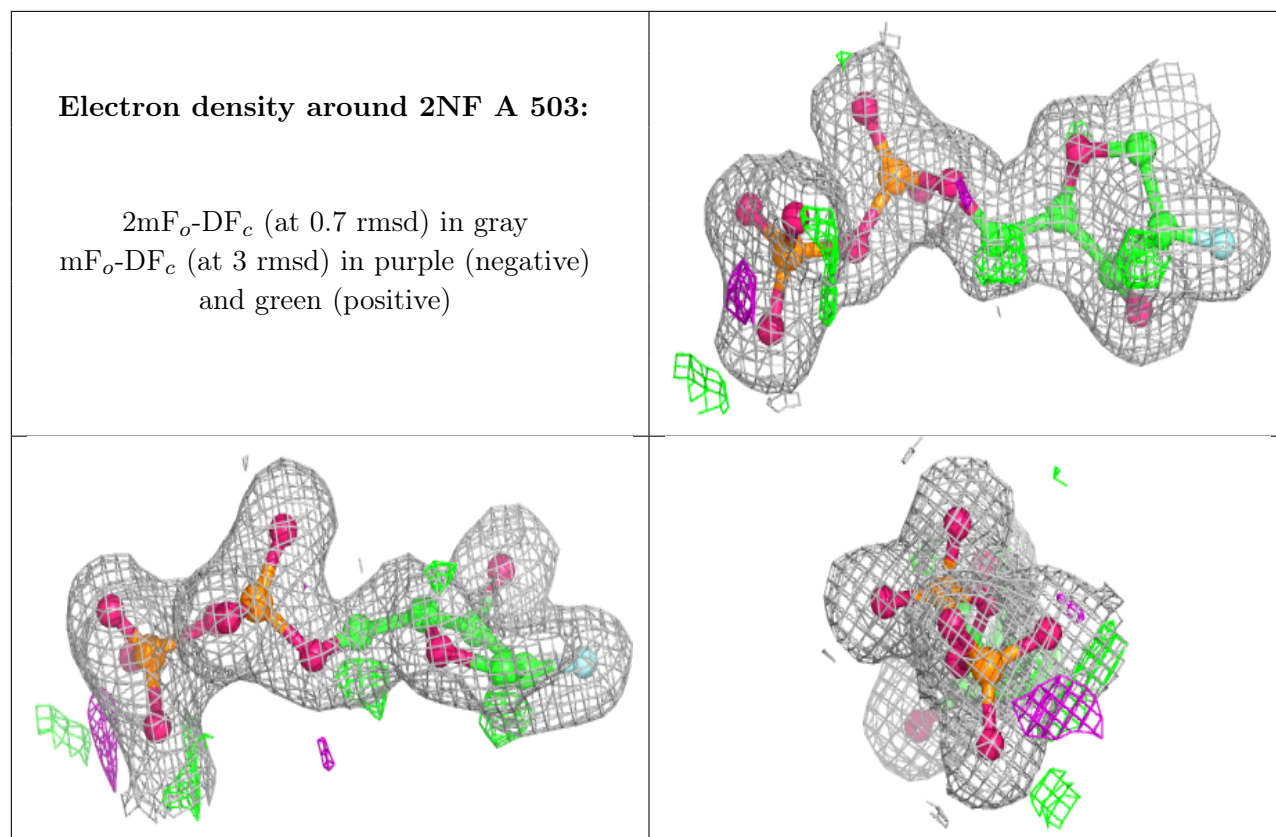
The following is a graphical depiction of the model fit to experimental electron density of all instances of the Ligand of Interest. In addition, ligands with molecular weight > 250 and outliers as shown on the geometry validation Tables will also be included. Each fit is shown from different orientation to approximate a three-dimensional view.



**Electron density around 2NF B 502:**

$2mF_o-DF_c$  (at 0.7 rmsd) in gray  
 $mF_o-DF_c$  (at 3 rmsd) in purple (negative)  
and green (positive)





## 6.5 Other polymers [i](#)

There are no such residues in this entry.