



Full wwPDB X-ray Structure Validation Report ⓘ

Feb 13, 2024 – 01:02 PM EST

PDB ID : 3IWE
Title : Crystal Structure of human type-I N-myristoyltransferase with bound myristoyl-CoA and inhibitor DDD85646
Authors : Qiu, W.; Hutchinson, A.; Wernimont, A.; Lin, Y.-H.; Kania, A.; Ravichandran, M.; Koziaradzki, I.; Cossar, D.; Schapira, M.; Arrowsmith, C.H.; Bountra, C.; Weigelt, J.; Edwards, A.M.; Wyatt, P.G.; Ferguson, M.A.J.; Frearson, J.A.; Brand, S.Y.; Robinson, D.A.; Bochkarev, A.; Hui, R.; Structural Genomics Consortium (SGC)
Deposited on : 2009-09-02
Resolution : 1.79 Å(reported)

This is a Full wwPDB X-ray Structure Validation Report for a publicly released PDB entry.

We welcome your comments at validation@mail.wwpdb.org

A user guide is available at

<https://www.wwpdb.org/validation/2017/XrayValidationReportHelp>

with specific help available everywhere you see the ⓘ symbol.

The types of validation reports are described at

<http://www.wwpdb.org/validation/2017/FAQs#types>.

The following versions of software and data (see [references ⓘ](#)) were used in the production of this report:

MolProbity : 4.02b-467
Mogul : 1.8.5 (274361), CSD as541be (2020)
Xtriage (Phenix) : 1.13
EDS : 2.36
buster-report : 1.1.7 (2018)
Percentile statistics : 20191225.v01 (using entries in the PDB archive December 25th 2019)
Refmac : 5.8.0158
CCP4 : 7.0.044 (Gargrove)

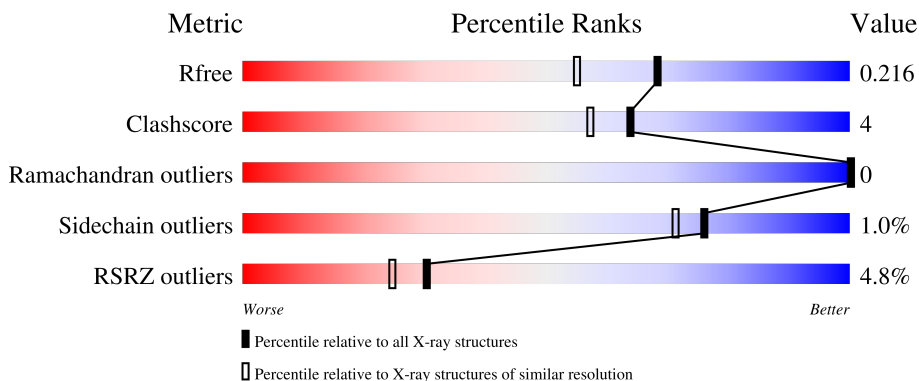
1 Overall quality at a glance

The following experimental techniques were used to determine the structure:

X-RAY DIFFRACTION

The reported resolution of this entry is 1.79 Å.

Percentile scores (ranging between 0-100) for global validation metrics of the entry are shown in the following graphic. The table shows the number of entries on which the scores are based.



Metric	Whole archive (#Entries)	Similar resolution (#Entries, resolution range(Å))
R_{free}	130704	5950 (1.80-1.80)
Clashscore	141614	6793 (1.80-1.80)
Ramachandran outliers	138981	6697 (1.80-1.80)
Sidechain outliers	138945	6696 (1.80-1.80)
RSRZ outliers	127900	5850 (1.80-1.80)

The table below summarises the geometric issues observed across the polymeric chains and their fit to the electron density. The red, orange, yellow and green segments of the lower bar indicate the fraction of residues that contain outliers for ≥ 3 , 2, 1 and 0 types of geometric quality criteria respectively. A grey segment represents the fraction of residues that are not modelled. The numeric value for each fraction is indicated below the corresponding segment, with a dot representing fractions $\leq 5\%$. The upper red bar (where present) indicates the fraction of residues that have poor fit to the electron density. The numeric value is given above the bar.

Mol	Chain	Length	Quality of chain
1	A	383	 5% 93% 7%
1	B	383	 5% 94% 5%

The following table lists non-polymeric compounds, carbohydrate monomers and non-standard

Ideal geometry (proteins) : Engh & Huber (2001)
 Ideal geometry (DNA, RNA) : Parkinson et al. (1996)
 Validation Pipeline (wwPDB-VP) : 2.36

residues in protein, DNA, RNA chains that are outliers for geometric or electron-density-fit criteria:

Mol	Type	Chain	Res	Chirality	Geometry	Clashes	Electron density
2	MYA	A	1001	X	-	-	-
2	MYA	B	2001	X	-	-	-

2 Entry composition i

There are 4 unique types of molecules in this entry. The entry contains 7527 atoms, of which 0 are hydrogens and 0 are deuteriums.

In the tables below, the ZeroOcc column contains the number of atoms modelled with zero occupancy, the AltConf column contains the number of residues with at least one atom in alternate conformation and the Trace column contains the number of residues modelled with at most 2 atoms.

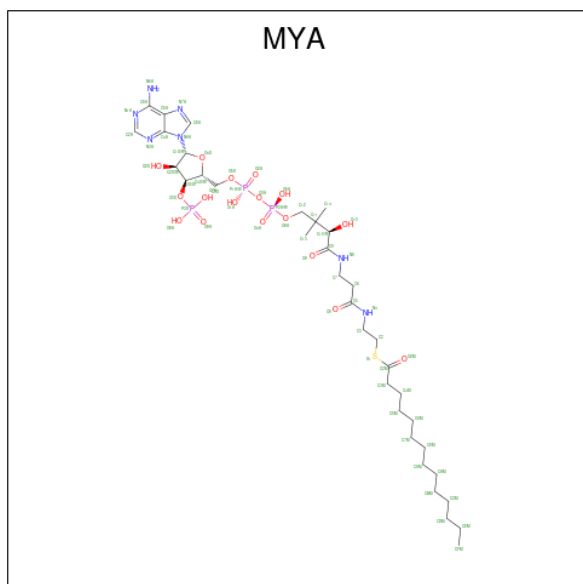
- Molecule 1 is a protein called Glycylpeptide N-tetradecanoyltransferase 1.

Mol	Chain	Residues	Atoms					ZeroOcc	AltConf	Trace
			Total	C	N	O	S			
1	A	382	3171	2064	532	558	17	0	12	0
1	B	381	3231	2103	545	567	16	0	21	0

There are 2 discrepancies between the modelled and reference sequences:

Chain	Residue	Modelled	Actual	Comment	Reference
A	114	GLY	-	expression tag	UNP P30419
B	114	GLY	-	expression tag	UNP P30419

- Molecule 2 is TETRADECANOYL-COA (three-letter code: MYA) (formula: $C_{35}H_{62}N_7O_{17}P_3S$).



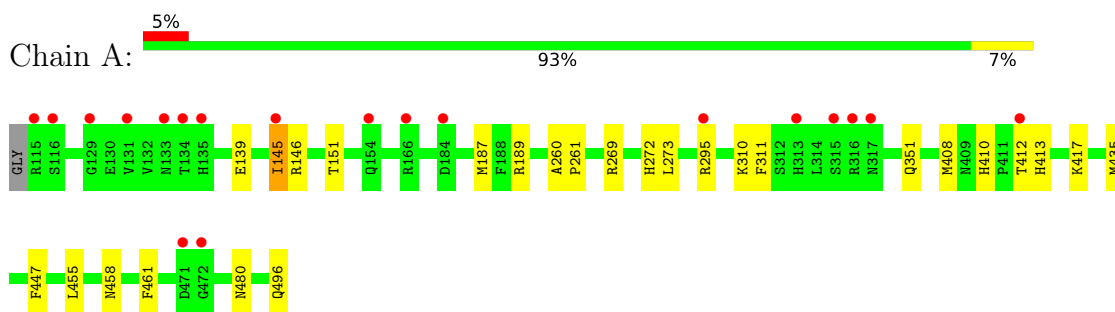
Mol	Chain	Residues	Atoms					ZeroOcc	AltConf	
			Total	C	N	O	P			S
2	A	1	63	35	7	17	3	1	0	0

Continued on next page...

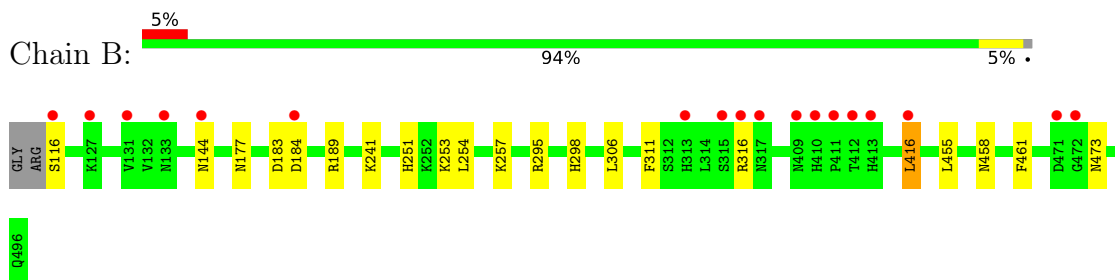
3 Residue-property plots [i](#)

These plots are drawn for all protein, RNA, DNA and oligosaccharide chains in the entry. The first graphic for a chain summarises the proportions of the various outlier classes displayed in the second graphic. The second graphic shows the sequence view annotated by issues in geometry and electron density. Residues are color-coded according to the number of geometric quality criteria for which they contain at least one outlier: green = 0, yellow = 1, orange = 2 and red = 3 or more. A red dot above a residue indicates a poor fit to the electron density ($RSRZ > 2$). Stretches of 2 or more consecutive residues without any outlier are shown as a green connector. Residues present in the sample, but not in the model, are shown in grey.

- Molecule 1: Glycylpeptide N-tetradecanoyltransferase 1



- Molecule 1: Glycylpeptide N-tetradecanoyltransferase 1



4 Data and refinement statistics

Property	Value	Source
Space group	P 2 21 21	Depositor
Cell constants a, b, c, α , β , γ	58.29Å 77.65Å 179.57Å 90.00° 90.00° 90.00°	Depositor
Resolution (Å)	19.43 – 1.79 19.43 – 1.79	Depositor EDS
% Data completeness (in resolution range)	100.0 (19.43-1.79) 97.1 (19.43-1.79)	Depositor EDS
R_{merge}	0.08	Depositor
R_{sym}	0.04	Depositor
$\langle I/\sigma(I) \rangle$ ¹	1.98 (at 1.79Å)	Xtrriage
Refinement program	REFMAC 5.5.0072	Depositor
R, R_{free}	0.180 , 0.219 0.179 , 0.216	Depositor DCC
R_{free} test set	3759 reflections (5.00%)	wwPDB-VP
Wilson B-factor (Å ²)	14.9	Xtrriage
Anisotropy	0.061	Xtrriage
Bulk solvent k_{sol} (e/Å ³), B_{sol} (Å ²)	0.35 , 48.7	EDS
L-test for twinning ²	$\langle L \rangle = 0.46$, $\langle L^2 \rangle = 0.29$	Xtrriage
Estimated twinning fraction	No twinning to report.	Xtrriage
F_o, F_c correlation	0.95	EDS
Total number of atoms	7527	wwPDB-VP
Average B, all atoms (Å ²)	15.0	wwPDB-VP

Xtrriage's analysis on translational NCS is as follows: *The largest off-origin peak in the Patterson function is 15.57% of the height of the origin peak. No significant pseudotranslation is detected.*

¹Intensities estimated from amplitudes.

²Theoretical values of $\langle |L| \rangle$, $\langle L^2 \rangle$ for acentric reflections are 0.5, 0.333 respectively for untwinned datasets, and 0.375, 0.2 for perfectly twinned datasets.

5 Model quality

5.1 Standard geometry

Bond lengths and bond angles in the following residue types are not validated in this section: MYA, 646

The Z score for a bond length (or angle) is the number of standard deviations the observed value is removed from the expected value. A bond length (or angle) with $|Z| > 5$ is considered an outlier worth inspection. RMSZ is the root-mean-square of all Z scores of the bond lengths (or angles).

Mol	Chain	Bond lengths		Bond angles	
		RMSZ	# Z >5	RMSZ	# Z >5
1	A	0.39	0/3296	0.53	0/4479
1	B	0.41	0/3382	0.53	0/4593
All	All	0.40	0/6678	0.53	0/9072

There are no bond length outliers.

There are no bond angle outliers.

There are no chirality outliers.

There are no planarity outliers.

5.2 Too-close contacts

In the following table, the Non-H and H(model) columns list the number of non-hydrogen atoms and hydrogen atoms in the chain respectively. The H(added) column lists the number of hydrogen atoms added and optimized by MolProbity. The Clashes column lists the number of clashes within the asymmetric unit, whereas Symm-Clashes lists symmetry-related clashes.

Mol	Chain	Non-H	H(model)	H(added)	Clashes	Symm-Clashes
1	A	3171	0	3169	35	0
1	B	3231	0	3271	17	0
2	A	63	0	58	0	0
2	B	63	0	58	0	0
3	A	32	0	24	4	0
3	B	32	0	24	7	0
4	A	448	0	0	3	0
4	B	487	0	0	1	0
All	All	7527	0	6604	55	0

The all-atom clashscore is defined as the number of clashes found per 1000 atoms (including hydrogen atoms). The all-atom clashscore for this structure is 4.

All (55) close contacts within the same asymmetric unit are listed below, sorted by their clash magnitude.

Atom-1	Atom-2	Interatomic distance (Å)	Clash overlap (Å)
1:A:189[B]:ARG:CZ	1:A:408[B]:MET:HE1	1.75	1.16
1:A:189[B]:ARG:NH1	1:A:408[B]:MET:HE1	1.80	0.96
1:A:189[B]:ARG:NH1	1:A:408[B]:MET:CE	2.36	0.88
1:A:189[B]:ARG:CZ	1:A:408[B]:MET:CE	2.60	0.80
1:A:351:GLN:HB2	1:B:144[A]:ASN:ND2	1.98	0.79
1:A:139:GLU:H	1:A:480:ASN:HD21	1.31	0.78
1:B:316:ARG:HH11	1:B:316:ARG:HG3	1.49	0.77
1:B:254:LEU:HD12	1:B:257:LYS:HD2	1.74	0.69
1:A:145[A]:ILE:HD13	1:A:273:LEU:HG	1.81	0.63
1:A:351:GLN:HB2	1:B:144[A]:ASN:HD21	1.62	0.62
3:A:1002:646:HABB	3:A:1002:646:CAW	2.31	0.60
1:B:316:ARG:HG3	1:B:316:ARG:NH1	2.18	0.58
1:A:189[B]:ARG:NH1	1:A:408[B]:MET:HE2	2.19	0.57
1:A:410:HIS:CD2	1:A:413:HIS:H	2.23	0.56
1:A:145[A]:ILE:HD12	1:A:272:HIS:CB	2.36	0.56
1:A:417:LYS:HG2	1:A:447:PHE:CD1	2.40	0.56
1:B:295[A]:ARG:HD3	1:B:473:ASN:ND2	2.21	0.55
1:A:187:MET:O	1:A:408[B]:MET:HG2	2.07	0.54
1:A:417:LYS:HG3	4:A:505:HOH:O	2.09	0.51
3:B:2002:646:CLF	3:B:2002:646:OAD	2.67	0.49
1:A:145[A]:ILE:HG12	1:A:146:ARG:N	2.28	0.49
1:A:187:MET:C	1:A:408[B]:MET:HG2	2.33	0.48
1:B:311:PHE:HE1	3:B:2002:646:HAA	1.79	0.48
1:A:311:PHE:HE1	3:A:1002:646:HAA	1.79	0.48
1:A:189[B]:ARG:NH2	1:A:408[B]:MET:HE1	2.22	0.48
1:B:251:HIS:CE1	1:B:253:LYS:HG3	2.48	0.48
1:A:410:HIS:HD2	1:A:413:HIS:H	1.62	0.47
1:A:410:HIS:HD2	1:A:412:THR:H	1.63	0.47
1:A:189[B]:ARG:NH2	1:A:408[B]:MET:CE	2.79	0.46
3:B:2002:646:OAE	3:B:2002:646:CLG	2.71	0.46
1:A:145[A]:ILE:HD12	1:A:272:HIS:HB2	1.97	0.45
1:B:241[B]:LYS:HE2	4:B:1006:HOH:O	2.16	0.45
1:B:183:ASP:HA	3:B:2002:646:HABA	1.99	0.45
1:A:295[B]:ARG:HG2	4:A:782:HOH:O	2.17	0.45
1:B:458:ASN:HA	1:B:461:PHE:CE2	2.51	0.45
3:A:1002:646:OAE	3:A:1002:646:CLG	2.71	0.45
1:A:145[A]:ILE:HD12	1:A:272:HIS:HB3	1.97	0.44
1:A:189[B]:ARG:HH12	1:A:408[B]:MET:CE	2.26	0.44
1:A:435:MET:HG3	1:A:461:PHE:CE2	2.53	0.43
1:B:298[A]:HIS:HE1	3:B:2002:646:OAE	2.01	0.43

Continued on next page...

Continued from previous page...

Atom-1	Atom-2	Interatomic distance (Å)	Clash overlap (Å)
3:B:2002:646:CBC	3:B:2002:646:HABB	2.48	0.43
1:A:145[A]:ILE:HD11	1:A:269:ARG:O	2.19	0.43
1:A:260:ALA:HB3	1:A:261:PRO:HD3	2.01	0.43
3:A:1002:646:HABB	3:A:1002:646:CBC	2.49	0.43
1:B:241[B]:LYS:HD3	1:B:241[B]:LYS:HA	1.79	0.43
1:A:187:MET:HE3	1:A:310:LYS:HB2	2.01	0.43
1:A:351:GLN:NE2	1:B:144[B]:ASN:ND2	2.68	0.42
1:B:298[A]:HIS:CE1	3:B:2002:646:OAE	2.73	0.42
1:B:306:LEU:HD23	1:B:416[A]:LEU:HD21	2.02	0.42
1:A:139:GLU:H	1:A:480:ASN:ND2	2.08	0.41
1:A:458:ASN:HA	1:A:461:PHE:CE2	2.55	0.41
1:A:145[A]:ILE:HG23	1:A:273:LEU:HD23	2.02	0.40
1:A:151:THR:HG21	4:A:1094:HOH:O	2.21	0.40
1:A:189[B]:ARG:HH12	1:A:408[B]:MET:HE2	1.86	0.40
1:B:177:ASN:O	1:B:189:ARG:HD2	2.20	0.40

There are no symmetry-related clashes.

5.3 Torsion angles [i](#)

5.3.1 Protein backbone [i](#)

In the following table, the Percentiles column shows the percent Ramachandran outliers of the chain as a percentile score with respect to all X-ray entries followed by that with respect to entries of similar resolution.

The Analysed column shows the number of residues for which the backbone conformation was analysed, and the total number of residues.

Mol	Chain	Analysed	Favoured	Allowed	Outliers	Percentiles	
1	A	392/383 (102%)	384 (98%)	8 (2%)	0	100	100
1	B	400/383 (104%)	387 (97%)	13 (3%)	0	100	100
All	All	792/766 (103%)	771 (97%)	21 (3%)	0	100	100

There are no Ramachandran outliers to report.

5.3.2 Protein sidechains [i](#)

In the following table, the Percentiles column shows the percent sidechain outliers of the chain as a percentile score with respect to all X-ray entries followed by that with respect to entries of similar

resolution.

The Analysed column shows the number of residues for which the sidechain conformation was analysed, and the total number of residues.

Mol	Chain	Analysed	Rotameric	Outliers	Percentiles	
1	A	348/348 (100%)	344 (99%)	4 (1%)	73	68
1	B	364/348 (105%)	359 (99%)	5 (1%)	67	59
All	All	712/696 (102%)	703 (99%)	9 (1%)	76	62

All (9) residues with a non-rotameric sidechain are listed below:

Mol	Chain	Res	Type
1	A	145[A]	ILE
1	A	145[B]	ILE
1	A	455	LEU
1	A	496	GLN
1	B	116	SER
1	B	184	ASP
1	B	416[A]	LEU
1	B	416[B]	LEU
1	B	455	LEU

Sometimes sidechains can be flipped to improve hydrogen bonding and reduce clashes. All (7) such sidechains are listed below:

Mol	Chain	Res	Type
1	A	410	HIS
1	A	475	GLN
1	A	480	ASN
1	A	496	GLN
1	B	428	GLN
1	B	458	ASN
1	B	473	ASN

5.3.3 RNA [i](#)

There are no RNA molecules in this entry.

5.4 Non-standard residues in protein, DNA, RNA chains [i](#)

There are no non-standard protein/DNA/RNA residues in this entry.

5.5 Carbohydrates [i](#)

There are no monosaccharides in this entry.

5.6 Ligand geometry [i](#)

4 ligands are modelled in this entry.

In the following table, the Counts columns list the number of bonds (or angles) for which Mogul statistics could be retrieved, the number of bonds (or angles) that are observed in the model and the number of bonds (or angles) that are defined in the Chemical Component Dictionary. The Link column lists molecule types, if any, to which the group is linked. The Z score for a bond length (or angle) is the number of standard deviations the observed value is removed from the expected value. A bond length (or angle) with $|Z| > 2$ is considered an outlier worth inspection. RMSZ is the root-mean-square of all Z scores of the bond lengths (or angles).

Mol	Type	Chain	Res	Link	Bond lengths			Bond angles		
					Counts	RMSZ	# Z > 2	Counts	RMSZ	# Z > 2
3	646	B	2002	-	30,35,35	1.90	8 (26%)	42,52,52	2.58	13 (30%)
3	646	A	1002	-	30,35,35	1.79	5 (16%)	42,52,52	2.42	12 (28%)
2	MYA	B	2001	-	57,65,65	1.01	4 (7%)	68,91,91	1.64	10 (14%)
2	MYA	A	1001	-	57,65,65	1.10	5 (8%)	68,91,91	1.54	10 (14%)

In the following table, the Chirals column lists the number of chiral outliers, the number of chiral centers analysed, the number of these observed in the model and the number defined in the Chemical Component Dictionary. Similar counts are reported in the Torsion and Rings columns. '-' means no outliers of that kind were identified.

Mol	Type	Chain	Res	Link	Chirals	Torsions	Rings
3	646	B	2002	-	-	0/17/27/27	0/4/4/4
3	646	A	1002	-	-	0/17/27/27	0/4/4/4
2	MYA	B	2001	-	1/1/12/14	12/60/80/80	0/3/3/3
2	MYA	A	1001	-	1/1/12/14	12/60/80/80	0/3/3/3

All (22) bond length outliers are listed below:

Mol	Chain	Res	Type	Atoms	Z	Observed(Å)	Ideal(Å)
3	B	2002	646	OAD-SBF	6.36	1.50	1.43
3	A	1002	646	OAD-SBF	6.29	1.50	1.43
3	A	1002	646	CBB-NAT	-3.97	1.35	1.43
3	B	2002	646	CBB-NAT	-3.90	1.35	1.43
3	B	2002	646	CAZ-CAY	-3.74	1.39	1.49
3	A	1002	646	CAZ-CAY	-3.49	1.40	1.49

Continued on next page...

Continued from previous page...

Mol	Chain	Res	Type	Atoms	Z	Observed(Å)	Ideal(Å)
2	A	1001	MYA	P2A-O4A	2.98	1.61	1.50
2	A	1001	MYA	P3X-O9A	2.94	1.60	1.50
2	A	1001	MYA	P1A-O2A	2.88	1.61	1.50
2	B	2001	MYA	P3X-O9A	2.82	1.59	1.50
2	A	1001	MYA	O4X-C1X	2.70	1.44	1.41
2	B	2001	MYA	O4X-C1X	2.57	1.44	1.41
2	B	2001	MYA	P1A-O2A	2.50	1.59	1.50
2	B	2001	MYA	P2A-O4A	2.45	1.59	1.50
3	B	2002	646	CAO-NBD	2.43	1.50	1.46
3	A	1002	646	CAV-NBE	-2.35	1.33	1.37
3	B	2002	646	CAP-NBD	2.21	1.50	1.46
2	A	1001	MYA	C3M-C2M	2.20	1.53	1.50
3	B	2002	646	CAV-NBE	-2.10	1.34	1.37
3	A	1002	646	CBA-NBD	2.07	1.41	1.37
3	B	2002	646	CBC-SBF	-2.03	1.75	1.79
3	B	2002	646	SBF-NAT	2.02	1.66	1.63

All (45) bond angle outliers are listed below:

Mol	Chain	Res	Type	Atoms	Z	Observed(°)	Ideal(°)
3	A	1002	646	OAE-SBF-OAD	-7.83	109.92	119.55
3	B	2002	646	OAE-SBF-OAD	-7.48	110.35	119.55
3	B	2002	646	CAX-CBC-SBF	-5.80	119.44	123.27
3	B	2002	646	CAU-NAR-NBE	5.64	109.20	104.35
3	A	1002	646	CAU-NAR-NBE	5.57	109.14	104.35
3	B	2002	646	CAP-NBD-CAO	5.53	123.72	111.52
3	B	2002	646	CAV-CBB-CAU	-5.27	102.58	107.29
3	A	1002	646	CAV-CBB-CAU	-5.26	102.58	107.29
2	B	2001	MYA	C14-C11-C10	4.97	117.44	108.82
2	B	2001	MYA	N3A-C2A-N1A	-4.65	121.41	128.68
2	A	1001	MYA	N3A-C2A-N1A	-4.57	121.54	128.68
2	B	2001	MYA	C10-C9-N8	-4.39	107.84	116.58
3	A	1002	646	CAY-CAL-CBA	4.34	119.78	118.25
2	A	1001	MYA	C3M-C2M-S1	4.27	118.43	113.46
3	A	1002	646	CAW-CBC-SBF	-4.25	120.46	123.27
3	B	2002	646	CAW-CBC-SBF	-4.15	120.53	123.27
3	A	1002	646	CAX-CBC-SBF	-4.04	120.59	123.27
2	A	1001	MYA	C10-C9-N8	-3.99	108.64	116.58
3	B	2002	646	CAH-NAQ-CBA	3.86	121.97	116.86
2	B	2001	MYA	O2M-C2M-C3M	-3.85	119.44	123.99
2	A	1001	MYA	C14-C11-C10	3.82	115.45	108.82
2	B	2001	MYA	C13-C11-C10	-3.67	102.46	108.82

Continued on next page...

Continued from previous page...

Mol	Chain	Res	Type	Atoms	Z	Observed(°)	Ideal(°)
3	A	1002	646	CAH-NAQ-CBA	3.64	121.68	116.86
2	B	2001	MYA	C3M-C2M-S1	3.59	117.63	113.46
2	B	2001	MYA	O10-C10-C11	3.49	118.47	110.25
3	A	1002	646	CAP-NBD-CAO	3.39	119.01	111.52
3	B	2002	646	CAY-CAL-CBA	3.27	119.41	118.25
2	A	1001	MYA	P2A-O3A-P1A	-3.27	121.62	132.83
2	A	1001	MYA	O4X-C1X-C2X	-3.18	102.28	106.93
2	B	2001	MYA	P2A-O3A-P1A	-3.08	122.27	132.83
3	A	1002	646	CAC-NBE-CAV	-2.99	124.91	128.82
2	A	1001	MYA	O2M-C2M-C3M	-2.91	120.55	123.99
3	B	2002	646	CAI-CAH-NAQ	-2.88	120.38	123.96
3	A	1002	646	CAI-CAH-NAQ	-2.77	120.51	123.96
2	B	2001	MYA	C6-C7-N8	-2.71	106.42	111.90
2	A	1001	MYA	C13-C11-C10	-2.66	104.20	108.82
2	B	2001	MYA	O4X-C1X-C2X	-2.63	103.09	106.93
2	A	1001	MYA	O10-C10-C11	2.54	116.22	110.25
3	B	2002	646	NAQ-CBA-NBD	2.42	120.42	116.79
3	B	2002	646	CAC-NBE-CAV	-2.34	125.77	128.82
2	A	1001	MYA	C6-C7-N8	-2.23	107.39	111.90
3	B	2002	646	CAL-CBA-NBD	-2.22	119.66	122.29
3	A	1002	646	OAE-SBF-CBC	2.21	112.03	108.74
3	A	1002	646	CAN-NAS-CAM	2.11	116.41	110.34
3	B	2002	646	CAA-CAU-NAR	2.00	124.10	119.78

All (2) chirality outliers are listed below:

Mol	Chain	Res	Type	Atom
2	A	1001	MYA	C10
2	B	2001	MYA	C10

All (24) torsion outliers are listed below:

Mol	Chain	Res	Type	Atoms
2	A	1001	MYA	O10-C10-C9-O9
2	A	1001	MYA	C9-C10-C11-C14
2	A	1001	MYA	O10-C10-C11-C12
2	A	1001	MYA	O10-C10-C11-C13
2	A	1001	MYA	O10-C10-C11-C14
2	B	2001	MYA	O10-C10-C9-O9
2	B	2001	MYA	C9-C10-C11-C13
2	B	2001	MYA	C9-C10-C11-C14
2	B	2001	MYA	O10-C10-C11-C12

Continued on next page...

Continued from previous page...

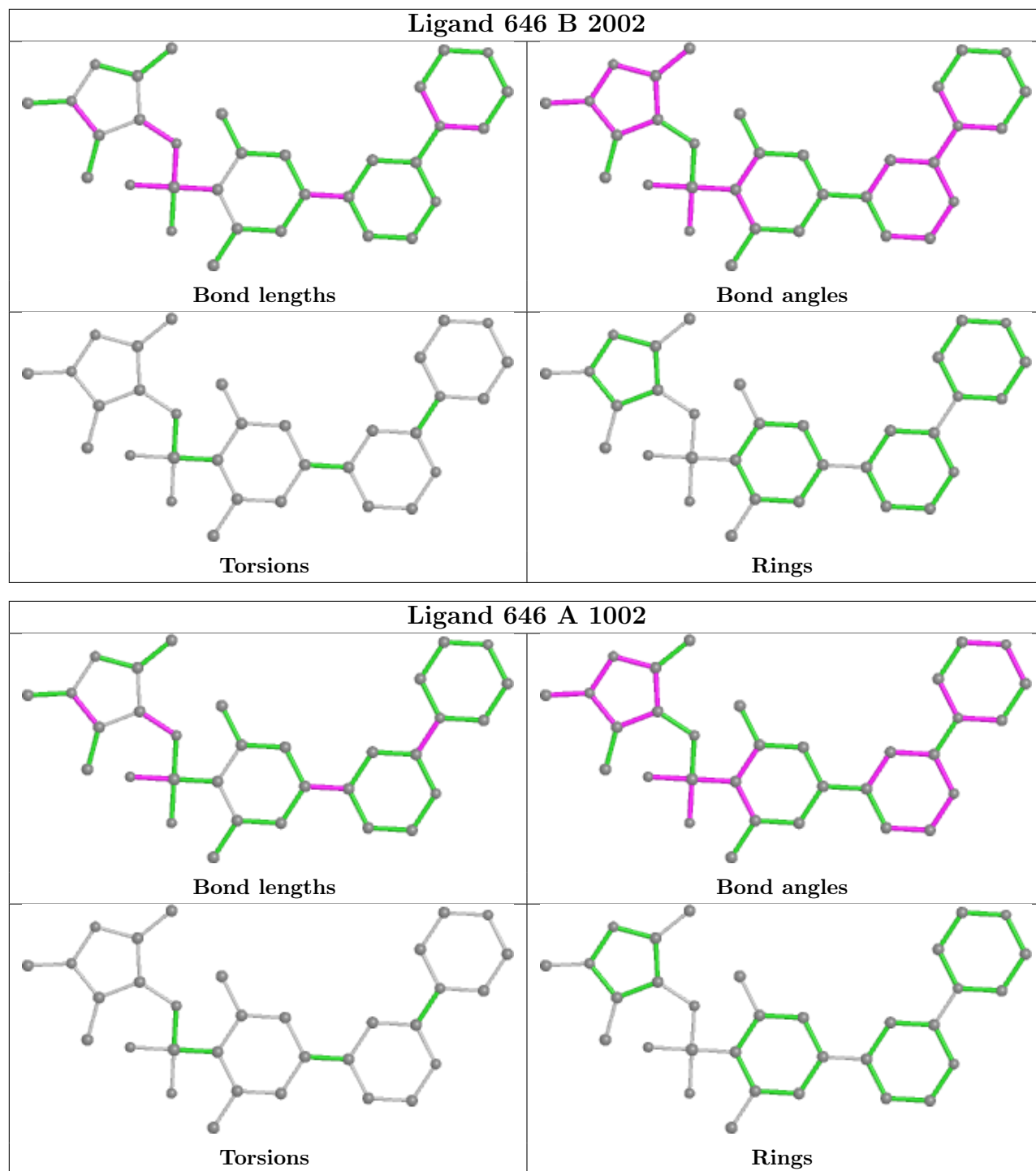
Mol	Chain	Res	Type	Atoms
2	B	2001	MYA	O10-C10-C11-C13
2	B	2001	MYA	O10-C10-C11-C14
2	A	1001	MYA	C11-C10-C9-N8
2	B	2001	MYA	C11-C10-C9-N8
2	B	2001	MYA	O10-C10-C9-N8
2	A	1001	MYA	C5-C6-C7-N8
2	A	1001	MYA	C9-C10-C11-C13
2	B	2001	MYA	C3X-O3X-P3X-O8A
2	B	2001	MYA	C9-C10-C11-C12
2	A	1001	MYA	C11-C10-C9-O9
2	B	2001	MYA	C11-C10-C9-O9
2	A	1001	MYA	O10-C10-C9-N8
2	A	1001	MYA	C5M-C6M-C7M-C8M
2	A	1001	MYA	C9-C10-C11-C12
2	B	2001	MYA	C8M-C9M-CAM-CBM

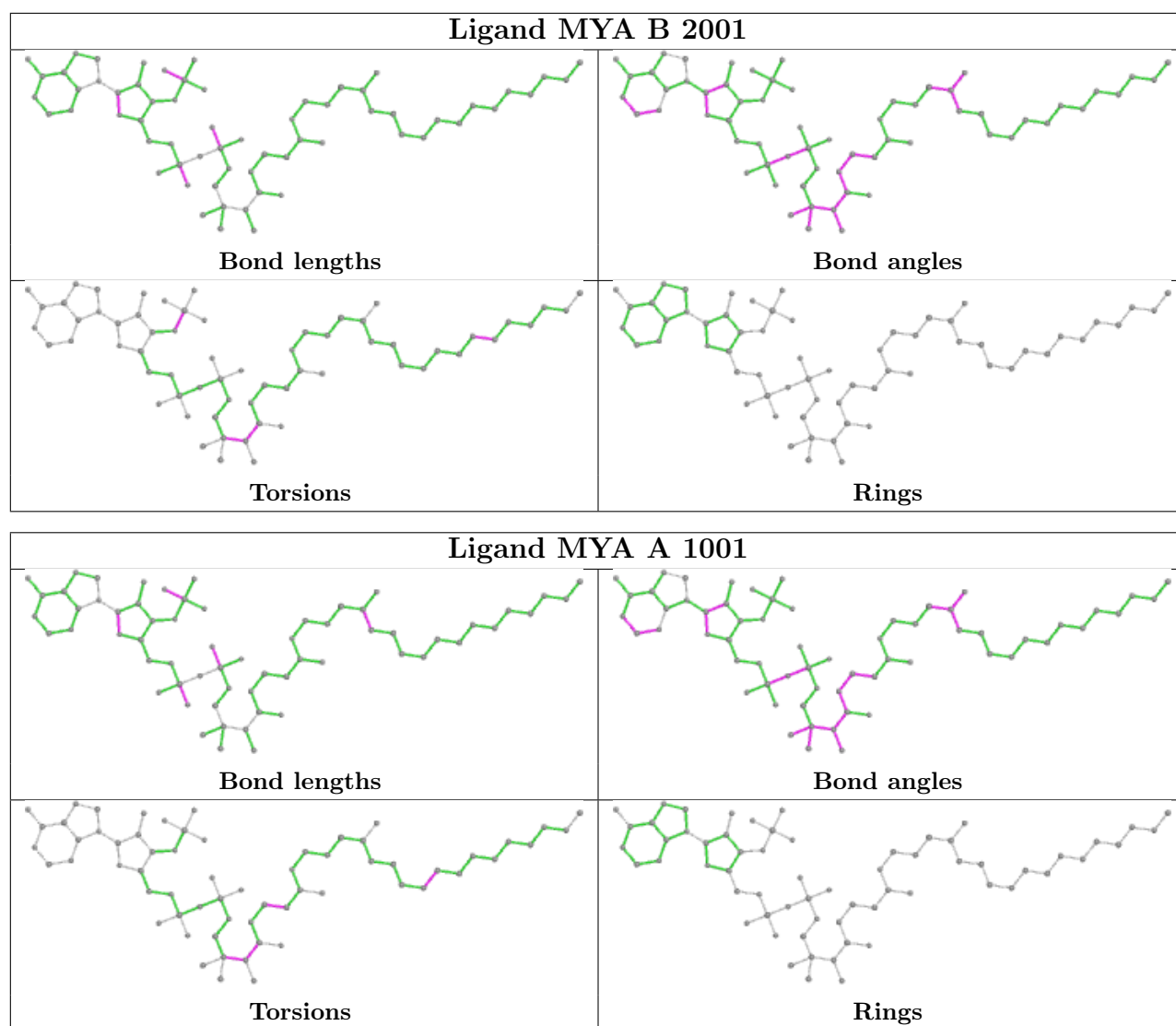
There are no ring outliers.

2 monomers are involved in 11 short contacts:

Mol	Chain	Res	Type	Clashes	Symm-Clashes
3	B	2002	646	7	0
3	A	1002	646	4	0

The following is a two-dimensional graphical depiction of Mogul quality analysis of bond lengths, bond angles, torsion angles, and ring geometry for all instances of the Ligand of Interest. In addition, ligands with molecular weight > 250 and outliers as shown on the validation Tables will also be included. For torsion angles, if less than 5% of the Mogul distribution of torsion angles is within 10 degrees of the torsion angle in question, then that torsion angle is considered an outlier. Any bond that is central to one or more torsion angles identified as an outlier by Mogul will be highlighted in the graph. For rings, the root-mean-square deviation (RMSD) between the ring in question and similar rings identified by Mogul is calculated over all ring torsion angles. If the average RMSD is greater than 60 degrees and the minimal RMSD between the ring in question and any Mogul-identified rings is also greater than 60 degrees, then that ring is considered an outlier. The outliers are highlighted in purple. The color gray indicates Mogul did not find sufficient equivalents in the CSD to analyse the geometry.





5.7 Other polymers [i](#)

There are no such residues in this entry.

5.8 Polymer linkage issues [i](#)

There are no chain breaks in this entry.

6 Fit of model and data

6.1 Protein, DNA and RNA chains

In the following table, the column labelled ‘#RSRZ > 2’ contains the number (and percentage) of RSRZ outliers, followed by percent RSRZ outliers for the chain as percentile scores relative to all X-ray entries and entries of similar resolution. The OWAB column contains the minimum, median, 95th percentile and maximum values of the occupancy-weighted average B-factor per residue. The column labelled ‘Q < 0.9’ lists the number of (and percentage) of residues with an average occupancy less than 0.9.

Mol	Chain	Analysed	<RSRZ>	#RSRZ>2	OWAB(Å ²)	Q<0.9
1	A	382/383 (99%)	0.22	19 (4%) 28 23	6, 14, 27, 34	1 (0%)
1	B	381/383 (99%)	0.14	18 (4%) 31 25	5, 12, 25, 36	0
All	All	763/766 (99%)	0.18	37 (4%) 30 25	5, 12, 26, 36	1 (0%)

All (37) RSRZ outliers are listed below:

Mol	Chain	Res	Type	RSRZ
1	B	412	THR	6.1
1	A	129	GLY	4.7
1	B	315	SER	4.7
1	B	410	HIS	4.5
1	B	313	HIS	4.4
1	A	131	VAL	4.2
1	A	316[A]	ARG	4.1
1	A	317	ASN	4.1
1	B	409[A]	ASN	3.9
1	A	115	ARG	3.9
1	B	317	ASN	3.9
1	B	411	PRO	3.7
1	A	313	HIS	3.6
1	B	133	ASN	3.6
1	A	315	SER	3.4
1	B	472	GLY	3.3
1	B	413[A]	HIS	3.2
1	B	116	SER	3.1
1	B	127	LYS	3.0
1	A	116	SER	3.0
1	B	316	ARG	2.9
1	A	412	THR	2.8
1	A	472	GLY	2.7
1	A	134	THR	2.7

Continued on next page...

Continued from previous page...

Mol	Chain	Res	Type	RSRZ
1	B	471	ASP	2.7
1	A	154	GLN	2.6
1	B	131	VAL	2.6
1	A	145[A]	ILE	2.5
1	A	166	ARG	2.4
1	B	184	ASP	2.3
1	A	471	ASP	2.3
1	A	133	ASN	2.1
1	A	295[A]	ARG	2.1
1	B	416[A]	LEU	2.1
1	A	135	HIS	2.1
1	A	184	ASP	2.0
1	B	144[A]	ASN	2.0

6.2 Non-standard residues in protein, DNA, RNA chains [i](#)

There are no non-standard protein/DNA/RNA residues in this entry.

6.3 Carbohydrates [i](#)

There are no monosaccharides in this entry.

6.4 Ligands [i](#)

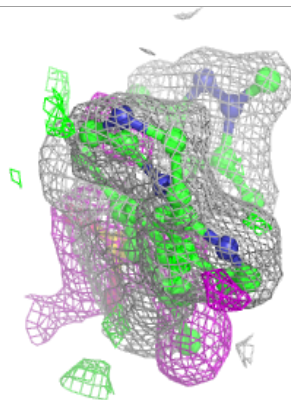
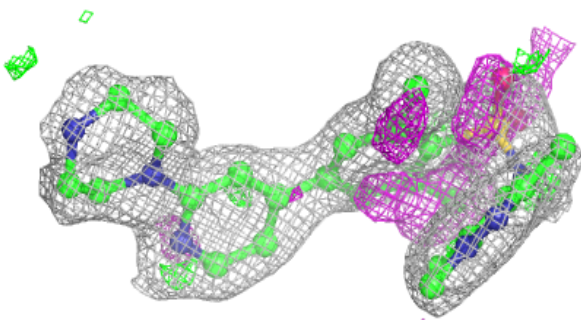
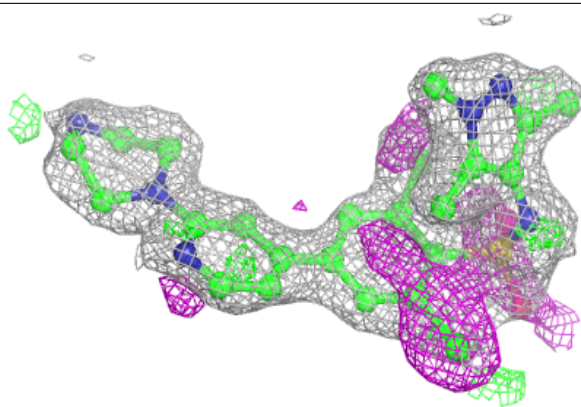
In the following table, the Atoms column lists the number of modelled atoms in the group and the number defined in the chemical component dictionary. The B-factors column lists the minimum, median, 95th percentile and maximum values of B factors of atoms in the group. The column labelled 'Q< 0.9' lists the number of atoms with occupancy less than 0.9.

Mol	Type	Chain	Res	Atoms	RSCC	RSR	B-factors(\AA^2)	Q<0.9
3	646	A	1002	32/32	0.71	0.21	28,33,36,42	0
3	646	B	2002	32/32	0.75	0.19	29,33,37,43	0
2	MYA	A	1001	63/63	0.96	0.09	3,13,16,17	0
2	MYA	B	2001	63/63	0.97	0.08	4,11,13,15	0

The following is a graphical depiction of the model fit to experimental electron density of all instances of the Ligand of Interest. In addition, ligands with molecular weight > 250 and outliers as shown on the geometry validation Tables will also be included. Each fit is shown from different orientation to approximate a three-dimensional view.

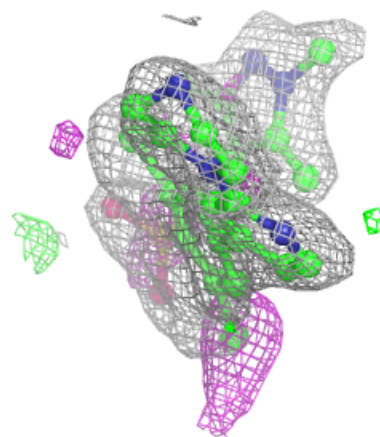
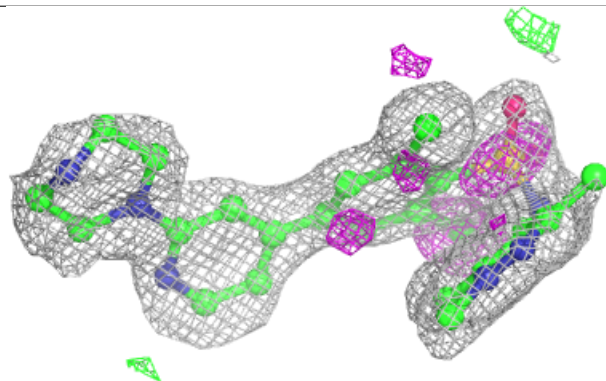
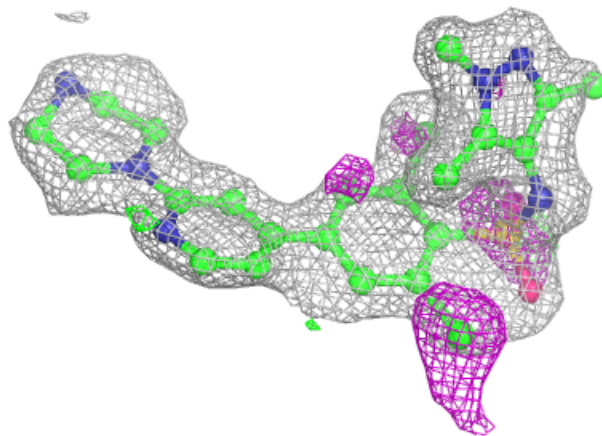
Electron density around 646 A 1002:

$2mF_o-DF_c$ (at 0.7 rmsd) in gray
 mF_o-DF_c (at 3 rmsd) in purple (negative)
and green (positive)



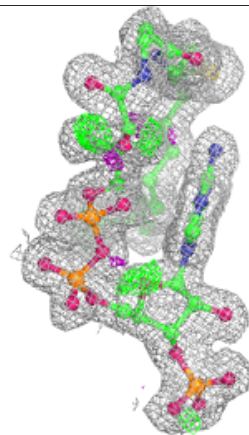
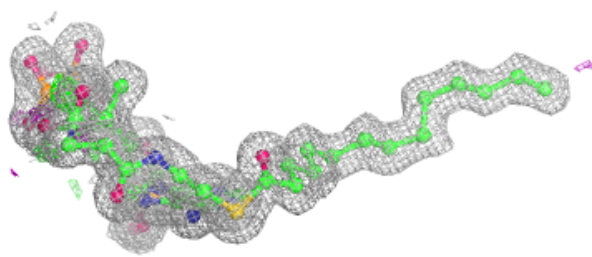
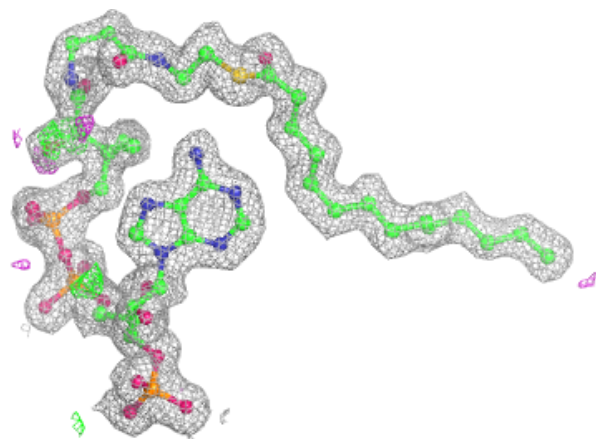
Electron density around 646 B 2002:

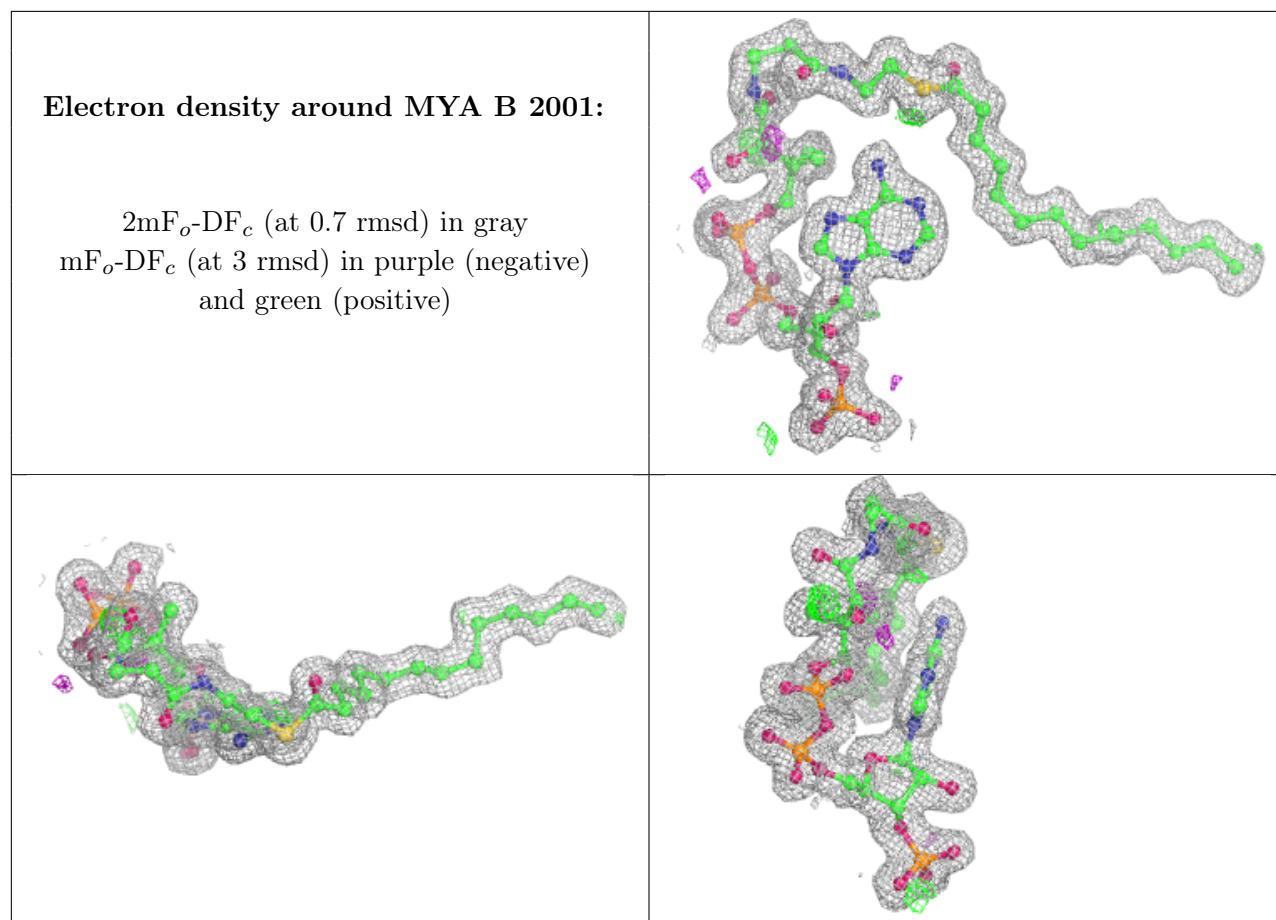
$2mF_o-DF_c$ (at 0.7 rmsd) in gray
 mF_o-DF_c (at 3 rmsd) in purple (negative)
and green (positive)



Electron density around MYA A 1001:

$2mF_o-DF_c$ (at 0.7 rmsd) in gray
 mF_o-DF_c (at 3 rmsd) in purple (negative)
and green (positive)





6.5 Other polymers [i](#)

There are no such residues in this entry.