



Full wwPDB X-ray Structure Validation Report ⓘ

Sep 29, 2024 – 04:42 PM EDT

PDB ID : 3HPT
Title : Crystal structure of human FxA in complex with (S)-2-cyano-1-(2-methylbenzofuran-5-yl)-3-(2-oxo-1-(2-oxo-2-(pyrrolidin-1-yl)ethyl)azepan-3-yl)guanidine
Authors : Klei, H.E.; Ghosh, K.; Rushith, A.; Kish, K.
Deposited on : 2009-06-04
Resolution : 2.19 Å(reported)

This is a Full wwPDB X-ray Structure Validation Report for a publicly released PDB entry.

We welcome your comments at validation@mail.wwpdb.org

A user guide is available at

<https://www.wwpdb.org/validation/2017/XrayValidationReportHelp>

with specific help available everywhere you see the ⓘ symbol.

The types of validation reports are described at

<http://www.wwpdb.org/validation/2017/FAQs#types>.

The following versions of software and data (see [references ⓘ](#)) were used in the production of this report:

MolProbity : 4.02b-467
Mogul : 2022.3.0, CSD as543be (2022)
Xtriage (Phenix) : 1.20.1
EDS : 3.0
buster-report : 1.1.7 (2018)
Percentile statistics : 20231227.v01 (using entries in the PDB archive December 27th 2023)
CCP4 : 9.0.003 (Gargrove)
Density-Fitness : 1.0.11
Ideal geometry (proteins) : Engh & Huber (2001)
Ideal geometry (DNA, RNA) : Parkinson et al. (1996)
Validation Pipeline (wwPDB-VP) : 2.39

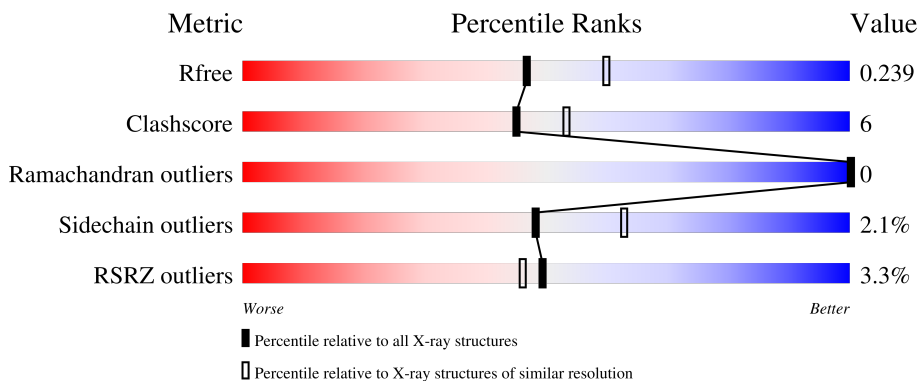
1 Overall quality at a glance

The following experimental techniques were used to determine the structure:

X-RAY DIFFRACTION

The reported resolution of this entry is 2.19 Å.

Percentile scores (ranging between 0-100) for global validation metrics of the entry are shown in the following graphic. The table shows the number of entries on which the scores are based.



Metric	Whole archive (#Entries)	Similar resolution (#Entries, resolution range(Å))
R_{free}	164625	5791 (2.20-2.20)
Clashscore	180529	6634 (2.20-2.20)
Ramachandran outliers	177936	6560 (2.20-2.20)
Sidechain outliers	177891	6561 (2.20-2.20)
RSRZ outliers	164620	5791 (2.20-2.20)

The table below summarises the geometric issues observed across the polymeric chains and their fit to the electron density. The red, orange, yellow and green segments of the lower bar indicate the fraction of residues that contain outliers for ≥ 3 , 2, 1 and 0 types of geometric quality criteria respectively. A grey segment represents the fraction of residues that are not modelled. The numeric value for each fraction is indicated below the corresponding segment, with a dot representing fractions $\leq 5\%$. The upper red bar (where present) indicates the fraction of residues that have poor fit to the electron density. The numeric value is given above the bar.

Mol	Chain	Length	Quality of chain
1	A	94	
1	C	94	
2	B	238	
2	D	238	

The following table lists non-polymeric compounds, carbohydrate monomers and non-standard

residues in protein, DNA, RNA chains that are outliers for geometric or electron-density-fit criteria:

Mol	Type	Chain	Res	Chirality	Geometry	Clashes	Electron density
3	GOL	A	21	-	-	X	-
9	DMS	B	251	-	-	X	-

2 Entry composition [i](#)

There are 10 unique types of molecules in this entry. The entry contains 5683 atoms, of which 0 are hydrogens and 0 are deuteriums.

In the tables below, the ZeroOcc column contains the number of atoms modelled with zero occupancy, the AltConf column contains the number of residues with at least one atom in alternate conformation and the Trace column contains the number of residues modelled with at most 2 atoms.

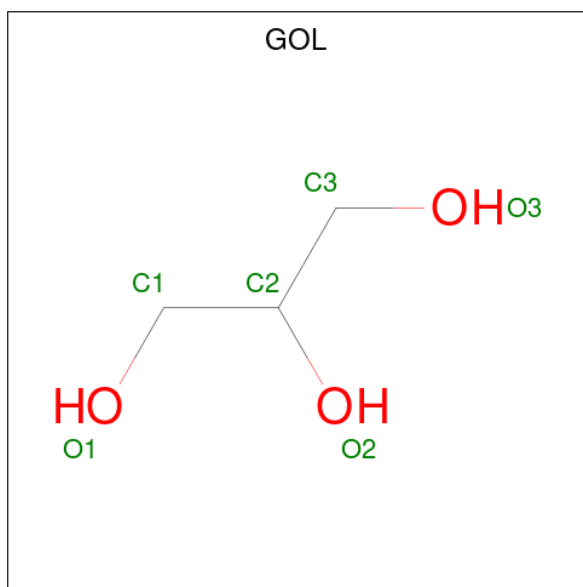
- Molecule 1 is a protein called Coagulation factor X.

Mol	Chain	Residues	Atoms					ZeroOcc	AltConf	Trace
			Total	C	N	O	S			
1	A	84	Total 624	C 375	N 108	O 128	S 13	0	1	0
1	C	87	Total 604	C 364	N 98	O 129	S 13	0	0	1

- Molecule 2 is a protein called Coagulation factor X.

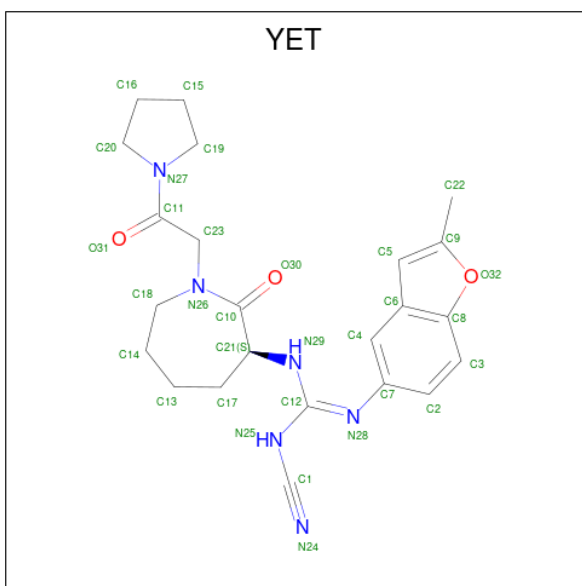
Mol	Chain	Residues	Atoms					ZeroOcc	AltConf	Trace
			Total	C	N	O	S			
2	B	238	Total 1861	C 1173	N 324	O 350	S 14	0	2	0
2	D	237	Total 1878	C 1185	N 325	O 354	S 14	0	5	0

- Molecule 3 is GLYCEROL (three-letter code: GOL) (formula: $C_3H_8O_3$).



Mol	Chain	Residues	Atoms	ZeroOcc	AltConf
3	A	1	Total C O 6 3 3	0	0
3	A	1	Total C O 6 3 3	0	0
3	B	1	Total C O 6 3 3	0	0
3	D	1	Total C O 6 3 3	0	0
3	D	1	Total C O 6 3 3	0	0

- Molecule 4 is 1-cyano-2-(2-methyl-1-benzofuran-5-yl)-3-[(3S)-2-oxo-1-(2-oxo-2-pyrrolidin-1-ylethyl)azepan-3-yl]guanidine (three-letter code: YET) (formula: C₂₃H₂₈N₆O₃).



Mol	Chain	Residues	Atoms	ZeroOcc	AltConf
4	B	1	Total C N O 32 23 6 3	0	0
4	D	1	Total C N O 32 23 6 3	0	0

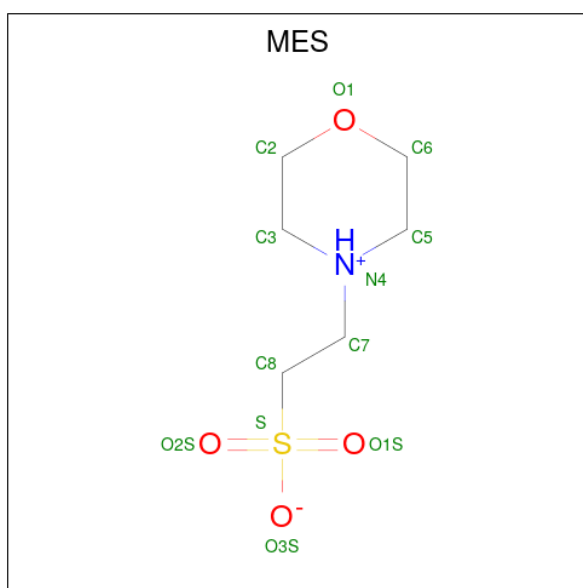
- Molecule 5 is CALCIUM ION (three-letter code: CA) (formula: Ca).

Mol	Chain	Residues	Atoms	ZeroOcc	AltConf
5	B	1	Total Ca 1 1	0	0
5	D	1	Total Ca 1 1	0	0

- Molecule 6 is SODIUM ION (three-letter code: NA) (formula: Na).

Mol	Chain	Residues	Atoms		ZeroOcc	AltConf
6	B	1	Total	Na	0	0
			1	1		
6	D	1	Total	Na	0	0
			1	1		

- Molecule 7 is 2-(N-MORPHOLINO)-ETHANESULFONIC ACID (three-letter code: MES) (formula: C₆H₁₃NO₄S).



Mol	Chain	Residues	Atoms					ZeroOcc	AltConf
7	B	1	Total	C	N	O	S	0	0
			12	6	1	4	1		
7	D	1	Total	C	N	O	S	0	0
			12	6	1	4	1		

- Molecule 8 is ACETATE ION (three-letter code: ACT) (formula: C₂H₃O₂).



Mol	Chain	Residues	Atoms	ZeroOcc	AltConf
8	B	1	Total C O 4 2 2	0	0
8	B	1	Total C O 4 2 2	0	0
8	B	1	Total C O 4 2 2	0	0
8	B	1	Total C O 4 2 2	0	0
8	D	1	Total C O 4 2 2	0	0
8	D	1	Total C O 4 2 2	0	0
8	D	1	Total C O 4 2 2	0	0
8	D	1	Total C O 4 2 2	0	0

- Molecule 9 is DIMETHYL SULFOXIDE (three-letter code: DMS) (formula: C₂H₆OS).



Mol	Chain	Residues	Atoms				ZeroOcc	AltConf
9	B	1	Total	C	O	S	0	0
			4	2	1	1		
9	D	1	Total	C	O	S	0	0
			4	2	1	1		

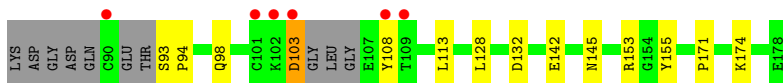
- Molecule 10 is water.

Mol	Chain	Residues	Atoms		ZeroOcc	AltConf
10	A	71	Total	O	0	0
			71	71		
10	B	195	Total	O	0	0
			195	195		
10	C	63	Total	O	0	0
			63	63		
10	D	225	Total	O	0	0
			225	225		

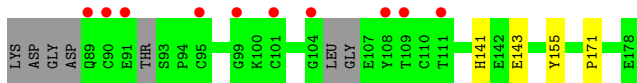
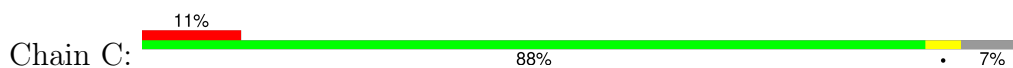
3 Residue-property plots [i](#)

These plots are drawn for all protein, RNA, DNA and oligosaccharide chains in the entry. The first graphic for a chain summarises the proportions of the various outlier classes displayed in the second graphic. The second graphic shows the sequence view annotated by issues in geometry and electron density. Residues are color-coded according to the number of geometric quality criteria for which they contain at least one outlier: green = 0, yellow = 1, orange = 2 and red = 3 or more. A red dot above a residue indicates a poor fit to the electron density ($RSRZ > 2$). Stretches of 2 or more consecutive residues without any outlier are shown as a green connector. Residues present in the sample, but not in the model, are shown in grey.

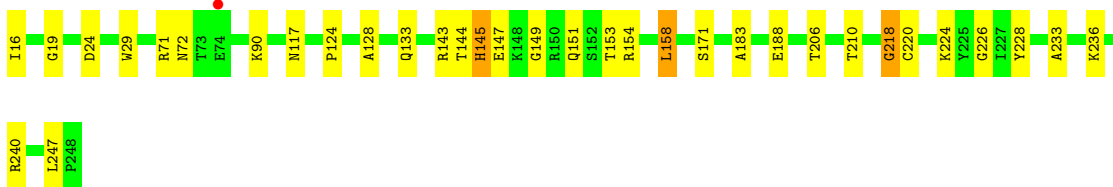
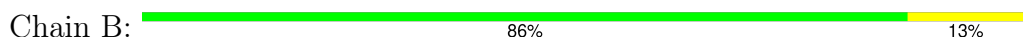
- Molecule 1: Coagulation factor X



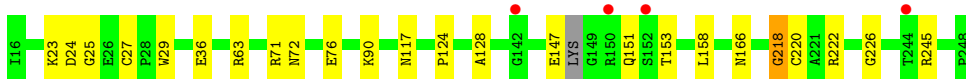
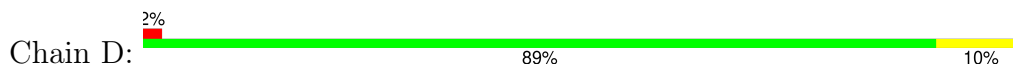
- Molecule 1: Coagulation factor X



- Molecule 2: Coagulation factor X



- Molecule 2: Coagulation factor X



4 Data and refinement statistics

Property	Value	Source
Space group	P 1 21 1	Depositor
Cell constants a, b, c, α , β , γ	61.98Å 78.66Å 73.67Å 90.00° 102.49° 90.00°	Depositor
Resolution (Å)	50.00 – 2.19 50.00 – 2.19	Depositor EDS
% Data completeness (in resolution range)	99.4 (50.00-2.19) 99.7 (50.00-2.19)	Depositor EDS
R_{merge}	0.09	Depositor
R_{sym}	(Not available)	Depositor
$\langle I/\sigma(I) \rangle$ ¹	2.62 (at 2.18Å)	Xtrriage
Refinement program	REFMAC 5.2.0019	Depositor
R, R_{free}	0.176 , 0.239 0.176 , 0.239	Depositor DCC
R_{free} test set	1779 reflections (5.00%)	wwPDB-VP
Wilson B-factor (Å ²)	31.1	Xtrriage
Anisotropy	0.007	Xtrriage
Bulk solvent k_{sol} (e/Å ³), B_{sol} (Å ²)	0.38 , 55.8	EDS
L-test for twinning ²	$\langle L \rangle = 0.50$, $\langle L^2 \rangle = 0.33$	Xtrriage
Estimated twinning fraction	No twinning to report.	Xtrriage
F_o, F_c correlation	0.96	EDS
Total number of atoms	5683	wwPDB-VP
Average B, all atoms (Å ²)	34.0	wwPDB-VP

Xtrriage's analysis on translational NCS is as follows: *The largest off-origin peak in the Patterson function is 6.02% of the height of the origin peak. No significant pseudotranslation is detected.*

¹Intensities estimated from amplitudes.

²Theoretical values of $\langle |L| \rangle$, $\langle L^2 \rangle$ for acentric reflections are 0.5, 0.333 respectively for untwinned datasets, and 0.375, 0.2 for perfectly twinned datasets.

5 Model quality

5.1 Standard geometry

Bond lengths and bond angles in the following residue types are not validated in this section: DMS, CA, MES, YET, NA, ACT, GOL

The Z score for a bond length (or angle) is the number of standard deviations the observed value is removed from the expected value. A bond length (or angle) with $|Z| > 5$ is considered an outlier worth inspection. RMSZ is the root-mean-square of all Z scores of the bond lengths (or angles).

Mol	Chain	Bond lengths		Bond angles	
		RMSZ	# Z >5	RMSZ	# Z >5
1	A	0.43	0/635	0.55	0/853
1	C	0.44	0/612	0.58	0/826
2	B	0.93	2/1906 (0.1%)	0.67	3/2572 (0.1%)
2	D	0.78	1/1930 (0.1%)	0.63	1/2599 (0.0%)
All	All	0.78	3/5083 (0.1%)	0.63	4/6850 (0.1%)

All (3) bond length outliers are listed below:

Mol	Chain	Res	Type	Atoms	Z	Observed(Å)	Ideal(Å)
2	D	218	GLY	C-N	27.46	1.97	1.34
2	B	145	HIS	C-N	25.39	1.92	1.34
2	B	218	GLY	C-N	24.57	1.90	1.34

All (4) bond angle outliers are listed below:

Mol	Chain	Res	Type	Atoms	Z	Observed(°)	Ideal(°)
2	D	218	GLY	O-C-N	-10.39	106.08	122.70
2	B	218	GLY	O-C-N	-8.89	108.47	122.70
2	B	145	HIS	O-C-N	-8.87	108.50	122.70
2	B	145	HIS	CA-C-N	5.86	130.10	117.20

There are no chirality outliers.

There are no planarity outliers.

5.2 Too-close contacts

In the following table, the Non-H and H(model) columns list the number of non-hydrogen atoms and hydrogen atoms in the chain respectively. The H(added) column lists the number of hydrogen atoms added and optimized by MolProbity. The Clashes column lists the number of clashes within

the asymmetric unit, whereas Symm-Clashes lists symmetry-related clashes.

Mol	Chain	Non-H	H(model)	H(added)	Clashes	Symm-Clashes
1	A	624	0	551	16	0
1	C	604	0	503	3	0
2	B	1861	0	1790	21	0
2	D	1878	0	1813	15	0
3	A	12	0	16	4	0
3	B	6	0	8	0	0
3	D	12	0	16	0	0
4	B	32	0	27	3	0
4	D	32	0	27	3	0
5	B	1	0	0	0	0
5	D	1	0	0	0	0
6	B	1	0	0	0	0
6	D	1	0	0	0	0
7	B	12	0	12	1	0
7	D	12	0	12	0	0
8	B	16	0	12	0	0
8	D	16	0	12	0	0
9	B	4	0	6	6	0
9	D	4	0	6	0	0
10	A	71	0	0	0	0
10	B	195	0	0	6	0
10	C	63	0	0	1	0
10	D	225	0	0	2	0
All	All	5683	0	4811	58	0

The all-atom clashscore is defined as the number of clashes found per 1000 atoms (including hydrogen atoms). The all-atom clashscore for this structure is 6.

All (58) close contacts within the same asymmetric unit are listed below, sorted by their clash magnitude.

Atom-1	Atom-2	Interatomic distance (Å)	Clash overlap (Å)
2:B:218:GLY:C	2:B:220:CYS:N	1.90	1.23
2:B:145:HIS:C	2:B:147:GLU:N	1.92	1.22
2:D:218:GLY:C	2:D:220:CYS:N	1.97	1.17
1:C:141:HIS:HD2	10:C:184:HOH:O	1.69	0.75
1:A:174:LYS:HG3	3:A:21:GOL:H31	1.68	0.73
1:A:174:LYS:HB3	3:A:21:GOL:H2	1.74	0.70
9:B:251:DMS:C1	10:B:326:HOH:O	2.42	0.68
2:D:36:GLU:H	2:D:36:GLU:CD	1.98	0.67
9:B:251:DMS:H12	10:B:326:HOH:O	1.94	0.66

Continued on next page...

Continued from previous page...

Atom-1	Atom-2	Interatomic distance (Å)	Clash overlap (Å)
1:A:145:ASN:HD22	2:D:63:ARG:NH2	1.95	0.65
1:A:145:ASN:HD22	2:D:63:ARG:HH22	1.43	0.64
2:B:72:ASN:HA	2:B:153:THR:O	1.98	0.64
1:A:174:LYS:HG3	3:A:21:GOL:C3	2.32	0.59
4:B:1:YET:HN29	4:B:1:YET:C2	2.15	0.59
2:D:147:GLU:OE2	2:D:222:ARG:NH1	2.35	0.57
1:A:174:LYS:NZ	2:B:206:THR:OG1	2.39	0.55
1:A:153[A]:ARG:HG2	10:B:321:HOH:O	2.09	0.53
1:A:103:ASP:HA	1:A:108:TYR:HA	1.91	0.53
2:B:158:LEU:HD23	9:B:251:DMS:H13	1.90	0.53
2:B:226:GLY:HA3	4:B:1:YET:H22	1.91	0.53
4:D:2:YET:C2	4:D:2:YET:HN29	2.22	0.52
2:B:171:SER:O	2:B:224:LYS:NZ	2.39	0.51
2:B:158:LEU:HD21	2:B:188:GLU:HB3	1.93	0.51
1:A:98:GLN:HB2	1:A:113:LEU:HD11	1.93	0.51
2:B:233:ALA:O	7:B:9:MES:H31	2.12	0.50
2:B:236:LYS:HG2	2:B:240:ARG:NH1	2.27	0.49
1:A:174:LYS:CB	3:A:21:GOL:H2	2.42	0.49
1:A:93:SER:N	1:A:94:PRO:HD3	2.29	0.47
9:B:251:DMS:H11	10:B:326:HOH:O	2.13	0.47
2:B:183:ALA:HB3	2:B:228:TYR:CE1	2.51	0.46
1:A:132:ASP:OD1	2:D:90:LYS:NZ	2.45	0.46
2:B:19:GLY:HA2	9:B:251:DMS:H11	1.97	0.46
2:B:71:ARG:O	2:B:154:ARG:HA	2.14	0.46
2:B:90:LYS:HE2	10:B:355:HOH:O	2.15	0.46
1:A:93:SER:N	1:A:94:PRO:CD	2.80	0.45
2:B:16:ILE:O	2:B:144:THR:HA	2.17	0.45
2:B:124:PRO:HB2	2:B:128:ALA:HB2	1.99	0.45
2:B:158:LEU:HD23	9:B:251:DMS:C1	2.47	0.44
2:D:27:CYS:H	2:D:71[B]:ARG:HH22	1.64	0.44
2:D:226:GLY:HA3	4:D:2:YET:H22	1.99	0.44
2:B:145:HIS:HB3	2:B:149:GLY:HA3	2.00	0.43
4:B:1:YET:C2	4:B:1:YET:N29	2.78	0.43
1:C:141:HIS:HE1	1:C:143:GLU:OE1	2.02	0.43
1:A:155:TYR:CZ	1:A:171:PRO:HB2	2.53	0.43
2:B:240:ARG:NH2	10:B:423:HOH:O	2.52	0.43
2:D:25:GLY:N	2:D:117:ASN:OD1	2.37	0.43
1:C:155:TYR:CZ	1:C:171:PRO:HB2	2.54	0.42
2:D:23:LYS:O	2:D:71[B]:ARG:NH1	2.52	0.42
2:D:72:ASN:HA	2:D:153:THR:O	2.17	0.42
2:B:143:ARG:HA	2:B:151:GLN:HA	2.01	0.42

Continued on next page...

Continued from previous page...

Atom-1	Atom-2	Interatomic distance (Å)	Clash overlap (Å)
2:D:124:PRO:HB2	2:D:128:ALA:HB2	2.01	0.42
1:A:128:LEU:HB3	1:A:142:GLU:OE1	2.18	0.42
2:D:166[A]:ASN:ND2	10:D:388:HOH:O	2.54	0.41
4:D:2:YET:C2	4:D:2:YET:N29	2.83	0.41
2:B:24:ASP:OD1	2:B:117:ASN:ND2	2.45	0.40
2:D:245:ARG:HB3	10:D:544:HOH:O	2.21	0.40

There are no symmetry-related clashes.

5.3 Torsion angles [i](#)

5.3.1 Protein backbone [i](#)

In the following table, the Percentiles column shows the percent Ramachandran outliers of the chain as a percentile score with respect to all X-ray entries followed by that with respect to entries of similar resolution.

The Analysed column shows the number of residues for which the backbone conformation was analysed, and the total number of residues.

Mol	Chain	Analysed	Favoured	Allowed	Outliers	Percentiles	
1	A	80/94 (85%)	78 (98%)	2 (2%)	0	100	100
1	C	81/94 (86%)	77 (95%)	4 (5%)	0	100	100
2	B	238/238 (100%)	231 (97%)	7 (3%)	0	100	100
2	D	236/238 (99%)	229 (97%)	7 (3%)	0	100	100
All	All	635/664 (96%)	615 (97%)	20 (3%)	0	100	100

There are no Ramachandran outliers to report.

5.3.2 Protein sidechains [i](#)

In the following table, the Percentiles column shows the percent sidechain outliers of the chain as a percentile score with respect to all X-ray entries followed by that with respect to entries of similar resolution.

The Analysed column shows the number of residues for which the sidechain conformation was analysed, and the total number of residues.

Mol	Chain	Analysed	Rotameric	Outliers	Percentiles	
1	A	70/80 (88%)	69 (99%)	1 (1%)	62	77
1	C	64/80 (80%)	64 (100%)	0	100	100
2	B	195/202 (96%)	190 (97%)	5 (3%)	41	54
2	D	199/202 (98%)	194 (98%)	5 (2%)	42	56
All	All	528/564 (94%)	517 (98%)	11 (2%)	48	63

All (11) residues with a non-rotameric sidechain are listed below:

Mol	Chain	Res	Type
1	A	103	ASP
2	B	29	TRP
2	B	133	GLN
2	B	158	LEU
2	B	210	THR
2	B	247	LEU
2	D	24	ASP
2	D	29	TRP
2	D	76	GLU
2	D	151	GLN
2	D	158	LEU

Sometimes sidechains can be flipped to improve hydrogen bonding and reduce clashes. All (8) such sidechains are listed below:

Mol	Chain	Res	Type
1	A	145	ASN
2	B	151	GLN
2	B	166	ASN
1	C	141	HIS
1	C	175	GLN
2	D	30	GLN
2	D	38	ASN
2	D	151	GLN

5.3.3 RNA [i](#)

There are no RNA molecules in this entry.

5.4 Non-standard residues in protein, DNA, RNA chains [i](#)

There are no non-standard protein/DNA/RNA residues in this entry.

5.5 Carbohydrates [i](#)

There are no oligosaccharides in this entry.

5.6 Ligand geometry [i](#)

Of 23 ligands modelled in this entry, 4 are monoatomic - leaving 19 for Mogul analysis.

In the following table, the Counts columns list the number of bonds (or angles) for which Mogul statistics could be retrieved, the number of bonds (or angles) that are observed in the model and the number of bonds (or angles) that are defined in the Chemical Component Dictionary. The Link column lists molecule types, if any, to which the group is linked. The Z score for a bond length (or angle) is the number of standard deviations the observed value is removed from the expected value. A bond length (or angle) with $|Z| > 2$ is considered an outlier worth inspection. RMSZ is the root-mean-square of all Z scores of the bond lengths (or angles).

Mol	Type	Chain	Res	Link	Bond lengths			Bond angles		
					Counts	RMSZ	# Z > 2	Counts	RMSZ	# Z > 2
8	ACT	B	252	-	3,3,3	0.81	0	3,3,3	0.87	0
4	YET	D	2	-	32,35,35	1.20	3 (9%)	35,48,48	1.54	6 (17%)
8	ACT	B	250	-	3,3,3	0.84	0	3,3,3	0.80	0
8	ACT	D	13	-	3,3,3	0.83	0	3,3,3	0.87	0
3	GOL	D	5	-	5,5,5	0.32	0	5,5,5	0.46	0
9	DMS	B	251	-	3,3,3	2.77	1 (33%)	3,3,3	0.62	0
3	GOL	D	6	-	5,5,5	0.36	0	5,5,5	0.66	0
8	ACT	B	14	-	3,3,3	0.80	0	3,3,3	0.92	0
8	ACT	D	15	-	3,3,3	0.83	0	3,3,3	0.87	0
8	ACT	B	11	-	3,3,3	0.86	0	3,3,3	1.18	0
4	YET	B	1	-	32,35,35	1.16	3 (9%)	35,48,48	1.41	5 (14%)
3	GOL	A	21	-	5,5,5	0.86	0	5,5,5	2.17	2 (40%)
3	GOL	A	7	-	5,5,5	0.35	0	5,5,5	0.58	0
9	DMS	D	250	-	3,3,3	2.74	1 (33%)	3,3,3	0.59	0
7	MES	D	10	-	12,12,12	2.07	1 (8%)	15,16,16	2.33	5 (33%)
8	ACT	D	12	-	3,3,3	0.81	0	3,3,3	0.90	0
7	MES	B	9	-	12,12,12	2.07	1 (8%)	15,16,16	2.52	4 (26%)
3	GOL	B	8	-	5,5,5	0.37	0	5,5,5	0.24	0
8	ACT	D	251	-	3,3,3	0.83	0	3,3,3	0.74	0

In the following table, the Chirals column lists the number of chiral outliers, the number of chiral

centers analysed, the number of these observed in the model and the number defined in the Chemical Component Dictionary. Similar counts are reported in the Torsion and Rings columns. '2' means no outliers of that kind were identified.

Mol	Type	Chain	Res	Link	Chirals	Torsions	Rings
4	YET	D	2	-	-	0/16/41/41	0/4/4/4
3	GOL	A	7	-	-	0/4/4/4	-
3	GOL	D	5	-	-	2/4/4/4	-
7	MES	B	9	-	-	1/6/14/14	0/1/1/1
3	GOL	D	6	-	-	0/4/4/4	-
7	MES	D	10	-	-	1/6/14/14	0/1/1/1
4	YET	B	1	-	-	0/16/41/41	0/4/4/4
3	GOL	B	8	-	-	0/4/4/4	-
3	GOL	A	21	-	-	2/4/4/4	-

All (10) bond length outliers are listed below:

Mol	Chain	Res	Type	Atoms	Z	Observed(Å)	Ideal(Å)
7	B	9	MES	C8-S	-6.86	1.68	1.77
7	D	10	MES	C8-S	-6.86	1.68	1.77
9	B	251	DMS	O-S	4.70	1.81	1.50
9	D	250	DMS	O-S	4.62	1.80	1.50
4	D	2	YET	C12-N25	-3.50	1.33	1.38
4	B	1	YET	C4-C7	3.32	1.40	1.37
4	D	2	YET	C4-C7	3.32	1.40	1.37
4	B	1	YET	C12-N25	-2.67	1.34	1.38
4	B	1	YET	C6-C8	-2.61	1.37	1.43
4	D	2	YET	C6-C8	-2.43	1.38	1.43

All (22) bond angle outliers are listed below:

Mol	Chain	Res	Type	Atoms	Z	Observed(°)	Ideal(°)
7	B	9	MES	C5-N4-C3	7.64	125.31	108.84
7	D	10	MES	C5-N4-C3	6.43	122.69	108.84
4	D	2	YET	C5-C6-C8	4.23	109.96	106.27
4	B	1	YET	C5-C6-C8	3.78	109.57	106.27
7	D	10	MES	C7-N4-C3	3.36	120.19	111.24
3	A	21	GOL	O1-C1-C2	3.05	124.09	110.38
4	B	1	YET	C7-C4-C6	-3.03	118.61	121.26
4	D	2	YET	C21-N29-C12	2.94	127.84	122.13
3	A	21	GOL	O3-C3-C2	2.89	123.39	110.38
7	B	9	MES	O1S-S-C8	2.89	111.09	106.73
4	B	1	YET	C18-N26-C10	2.89	125.78	122.42
7	B	9	MES	O3S-S-C8	2.86	111.59	106.00

Continued on next page...

Continued from previous page...

Mol	Chain	Res	Type	Atoms	Z	Observed(°)	Ideal(°)
7	D	10	MES	O3S-S-C8	2.79	111.46	106.00
7	B	9	MES	C7-N4-C3	2.65	118.30	111.24
4	D	2	YET	C7-C4-C6	-2.65	118.95	121.26
4	D	2	YET	C17-C21-C10	-2.51	108.45	111.65
4	B	1	YET	C14-C18-N26	-2.47	107.69	113.91
4	B	1	YET	C19-N27-C20	2.35	114.48	111.37
4	D	2	YET	C14-C18-N26	-2.24	108.27	113.91
7	D	10	MES	C7-N4-C5	2.20	117.11	111.24
4	D	2	YET	C18-N26-C10	2.17	124.95	122.42
7	D	10	MES	O1S-S-C8	2.15	109.97	106.73

There are no chirality outliers.

All (6) torsion outliers are listed below:

Mol	Chain	Res	Type	Atoms
3	A	21	GOL	O1-C1-C2-C3
3	D	5	GOL	O1-C1-C2-C3
7	D	10	MES	C8-C7-N4-C5
3	A	21	GOL	O1-C1-C2-O2
3	D	5	GOL	O1-C1-C2-O2
7	B	9	MES	C8-C7-N4-C5

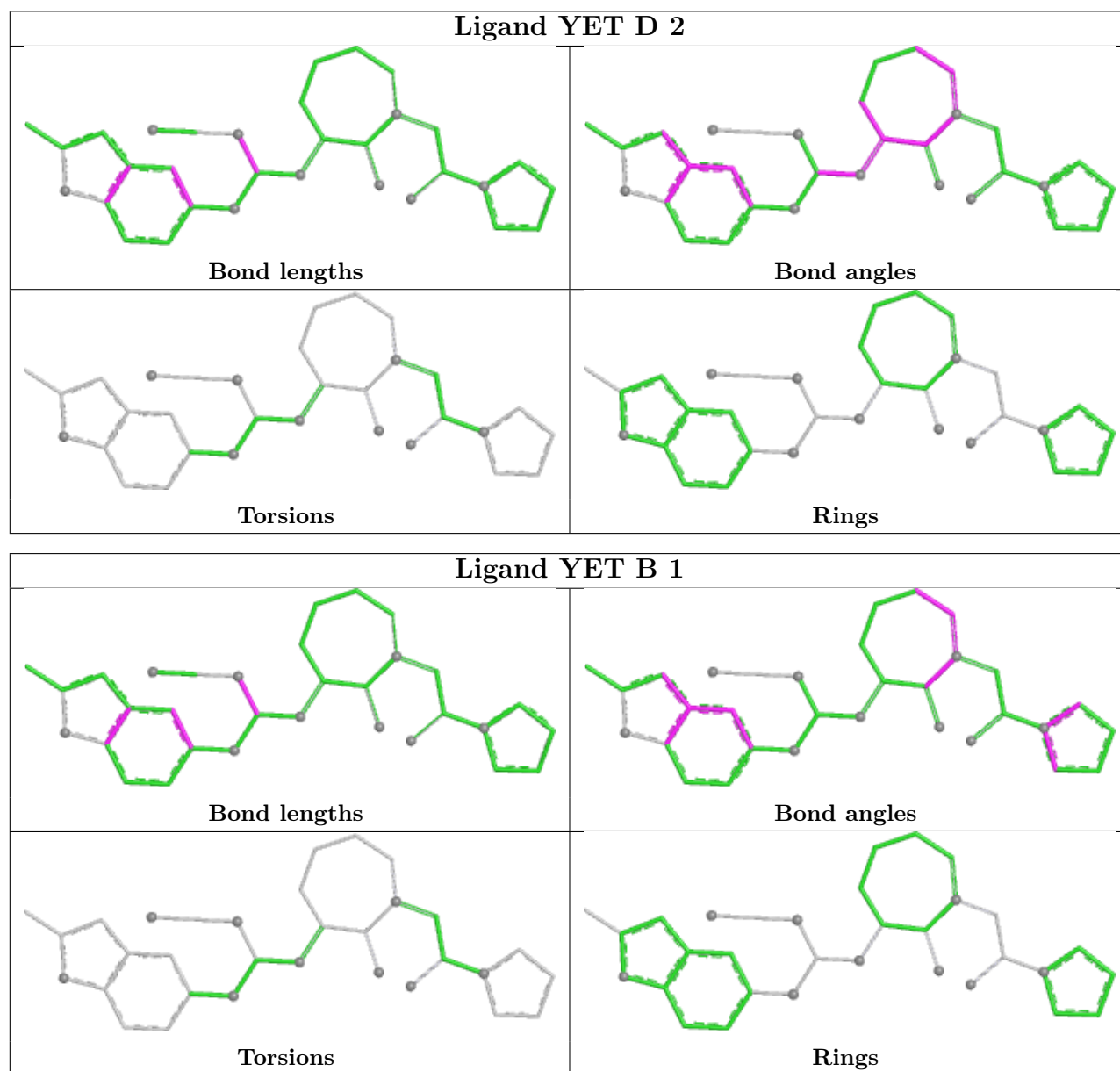
There are no ring outliers.

5 monomers are involved in 17 short contacts:

Mol	Chain	Res	Type	Clashes	Symm-Clashes
4	D	2	YET	3	0
9	B	251	DMS	6	0
4	B	1	YET	3	0
3	A	21	GOL	4	0
7	B	9	MES	1	0

The following is a two-dimensional graphical depiction of Mogul quality analysis of bond lengths, bond angles, torsion angles, and ring geometry for all instances of the Ligand of Interest. In addition, ligands with molecular weight > 250 and outliers as shown on the validation Tables will also be included. For torsion angles, if less than 5% of the Mogul distribution of torsion angles is within 10 degrees of the torsion angle in question, then that torsion angle is considered an outlier. Any bond that is central to one or more torsion angles identified as an outlier by Mogul will be highlighted in the graph. For rings, the root-mean-square deviation (RMSD) between the ring in question and similar rings identified by Mogul is calculated over all ring torsion angles. If the average RMSD is greater than 60 degrees and the minimal RMSD between the ring in question and any Mogul-identified rings is also greater than 60 degrees, then that ring is considered an outlier.

The outliers are highlighted in purple. The color gray indicates Mogul did not find sufficient equivalents in the CSD to analyse the geometry.



5.7 Other polymers [i](#)

There are no such residues in this entry.

5.8 Polymer linkage issues [i](#)

The following chains have linkage breaks:
Continued on next page...

Continued from previous page...

Mol	Chain	Number of breaks
-----	-------	------------------

Mol	Chain	Number of breaks
2	D	2
2	B	2

All chain breaks are listed below:

Model	Chain	Residue-1	Atom-1	Residue-2	Atom-2	Distance (Å)
1	D	145:HIS	C	147:GLU	N	2.42
1	D	218:GLY	C	220:CYS	N	1.97
1	B	145:HIS	C	147:GLU	N	1.92
1	B	218:GLY	C	220:CYS	N	1.90

6 Fit of model and data [i](#)

6.1 Protein, DNA and RNA chains [i](#)

In the following table, the column labelled ‘#RSRZ > 2’ contains the number (and percentage) of RSRZ outliers, followed by percent RSRZ outliers for the chain as percentile scores relative to all X-ray entries and entries of similar resolution. The OWAB column contains the minimum, median, 95th percentile and maximum values of the occupancy-weighted average B-factor per residue. The column labelled ‘Q < 0.9’ lists the number of (and percentage) of residues with an average occupancy less than 0.9.

Mol	Chain	Analysed	<RSRZ>	#RSRZ>2	OWAB(Å ²)	Q<0.9
1	A	84/94 (89%)	0.30	6 (7%) 23 21	21, 38, 63, 68	1 (1%)
1	C	87/94 (92%)	0.57	10 (11%) 11 9	21, 40, 81, 83	0
2	B	238/238 (100%)	-0.21	1 (0%) 89 87	16, 29, 48, 56	2 (0%)
2	D	237/238 (99%)	-0.21	4 (1%) 69 65	15, 28, 48, 59	5 (2%)
All	All	646/664 (97%)	-0.04	21 (3%) 49 46	15, 31, 59, 83	8 (1%)

All (21) RSRZ outliers are listed below:

Mol	Chain	Res	Type	RSRZ
1	A	90	CYS	5.0
1	C	89	GLN	4.1
1	C	90	CYS	3.7
1	C	108	TYR	3.3
1	C	101	CYS	3.3
1	C	91	GLU	3.1
1	C	104	GLY	3.1
1	C	111	THR	2.9
2	D	152	SER	2.6
1	C	95	CYS	2.5
2	D	244	THR	2.5
2	D	150	ARG	2.5
1	A	108	TYR	2.4
1	A	102	LYS	2.3
1	A	109	THR	2.3
1	C	99	GLY	2.2
2	D	142	GLY	2.2
1	A	101	CYS	2.2
1	A	103	ASP	2.1
2	B	74	GLU	2.1
1	C	109	THR	2.1

6.2 Non-standard residues in protein, DNA, RNA chains [i](#)

There are no non-standard protein/DNA/RNA residues in this entry.

6.3 Carbohydrates [i](#)

There are no monosaccharides in this entry.

6.4 Ligands [i](#)

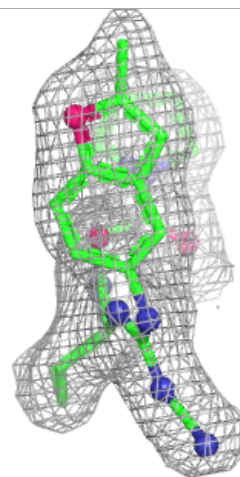
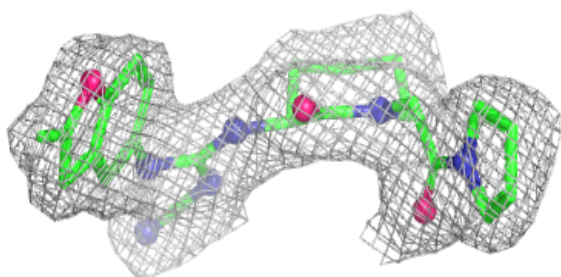
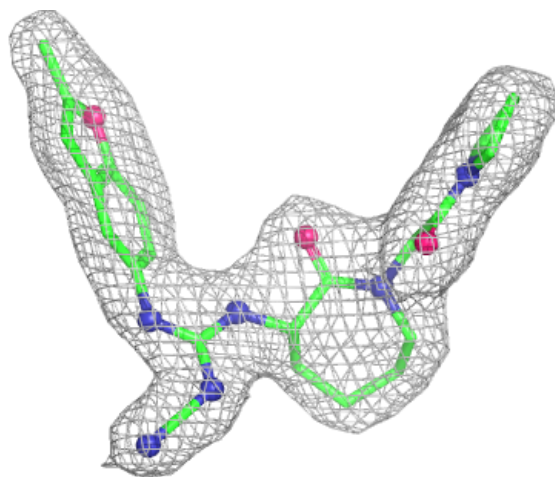
In the following table, the Atoms column lists the number of modelled atoms in the group and the number defined in the chemical component dictionary. The B-factors column lists the minimum, median, 95th percentile and maximum values of B factors of atoms in the group. The column labelled 'Q< 0.9' lists the number of atoms with occupancy less than 0.9.

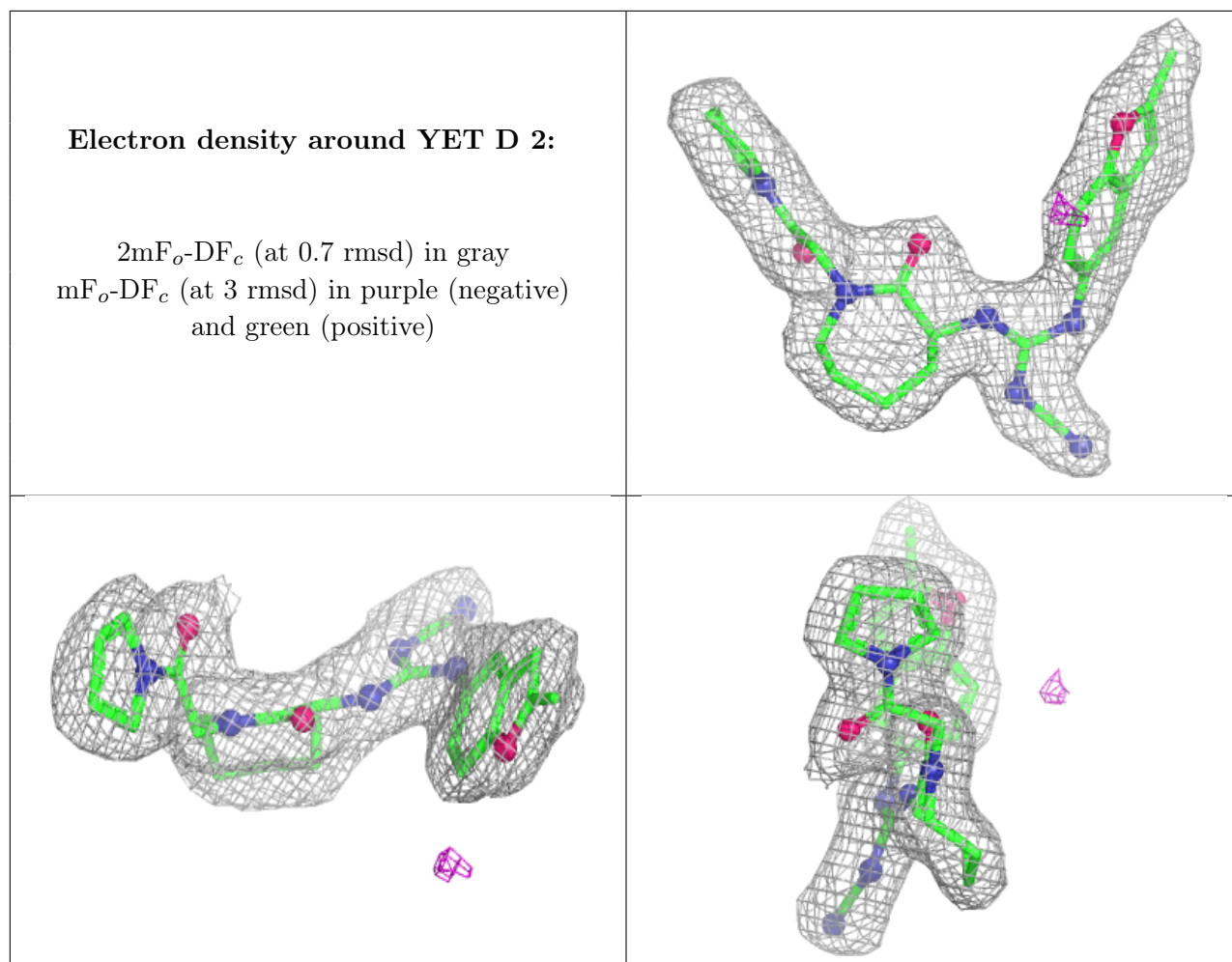
Mol	Type	Chain	Res	Atoms	RSCC	RSR	B-factors(Å ²)	Q<0.9
8	ACT	D	251	4/4	0.68	0.16	54,54,54,54	0
8	ACT	D	13	4/4	0.72	0.19	51,51,52,52	0
3	GOL	A	21	6/6	0.76	0.24	29,34,37,38	0
8	ACT	B	250	4/4	0.78	0.18	48,49,49,49	0
8	ACT	D	12	4/4	0.78	0.15	53,53,53,53	0
9	DMS	D	250	4/4	0.79	0.22	86,87,87,87	0
8	ACT	B	11	4/4	0.81	0.14	43,43,43,43	0
8	ACT	D	15	4/4	0.83	0.17	52,52,53,53	0
5	CA	B	249	1/1	0.84	0.10	86,86,86,86	0
8	ACT	B	252	4/4	0.87	0.16	61,61,61,61	0
8	ACT	B	14	4/4	0.87	0.13	56,56,56,56	0
3	GOL	D	5	6/6	0.87	0.11	48,49,49,49	0
9	DMS	B	251	4/4	0.88	0.16	67,68,68,68	0
3	GOL	B	8	6/6	0.89	0.11	40,43,44,45	0
6	NA	D	4	1/1	0.91	0.06	49,49,49,49	0
7	MES	B	9	12/12	0.93	0.09	34,37,43,43	0
6	NA	B	3	1/1	0.94	0.07	35,35,35,35	0
4	YET	B	1	32/32	0.95	0.06	24,29,31,31	0
7	MES	D	10	12/12	0.95	0.08	32,34,40,40	0
3	GOL	D	6	6/6	0.95	0.08	22,26,27,28	0
4	YET	D	2	32/32	0.96	0.06	24,26,29,33	0
5	CA	D	249	1/1	0.96	0.05	71,71,71,71	0
3	GOL	A	7	6/6	0.97	0.07	27,28,30,31	0

The following is a graphical depiction of the model fit to experimental electron density of all instances of the Ligand of Interest. In addition, ligands with molecular weight > 250 and outliers as shown on the geometry validation Tables will also be included. Each fit is shown from different orientation to approximate a three-dimensional view.

Electron density around YET B 1:

$2mF_o-DF_c$ (at 0.7 rmsd) in gray
 mF_o-DF_c (at 3 rmsd) in purple (negative)
and green (positive)





6.5 Other polymers [i](#)

There are no such residues in this entry.