



# Full wwPDB X-ray Structure Validation Report ⓘ

Oct 23, 2024 – 10:20 AM EDT

PDB ID : 3G6Z  
Title : Design and Preparation of Potent, Non-Peptidic, Bioavailable Renin Inhibitors  
Authors : Bezencon, O.; Bur, D.; Prade, L.; Weller, T.; Boss, C.; Fischli, W.  
Deposited on : 2009-02-09  
Resolution : 2.00 Å(reported)

This is a Full wwPDB X-ray Structure Validation Report for a publicly released PDB entry.

We welcome your comments at [validation@mail.wwpdb.org](mailto:validation@mail.wwpdb.org)

A user guide is available at

<https://www.wwpdb.org/validation/2017/XrayValidationReportHelp>

with specific help available everywhere you see the ⓘ symbol.

The types of validation reports are described at

<http://www.wwpdb.org/validation/2017/FAQs#types>.

---

The following versions of software and data (see [references ⓘ](#)) were used in the production of this report:

MolProbity : 4.02b-467  
Mogul : 2022.3.0, CSD as543be (2022)  
Xtriage (Phenix) : 1.20.1  
EDS : 3.0  
buster-report : 1.1.7 (2018)  
Percentile statistics : 20231227.v01 (using entries in the PDB archive December 27th 2023)  
CCP4 : 9.0.003 (Gargrove)  
Density-Fitness : 1.0.11  
Ideal geometry (proteins) : Engh & Huber (2001)  
Ideal geometry (DNA, RNA) : Parkinson et al. (1996)  
Validation Pipeline (wwPDB-VP) : 2.39

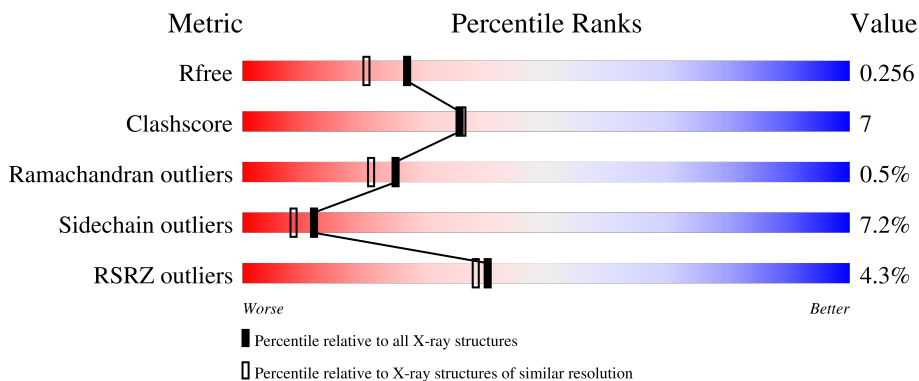
# 1 Overall quality at a glance

The following experimental techniques were used to determine the structure:

*X-RAY DIFFRACTION*

The reported resolution of this entry is 2.00 Å.

Percentile scores (ranging between 0-100) for global validation metrics of the entry are shown in the following graphic. The table shows the number of entries on which the scores are based.



Metric	Whole archive (#Entries)	Similar resolution (#Entries, resolution range(Å))
$R_{free}$	164625	9409 (2.00-2.00)
Clashscore	180529	10737 (2.00-2.00)
Ramachandran outliers	177936	10628 (2.00-2.00)
Sidechain outliers	177891	10627 (2.00-2.00)
RSRZ outliers	164620	9409 (2.00-2.00)

The table below summarises the geometric issues observed across the polymeric chains and their fit to the electron density. The red, orange, yellow and green segments of the lower bar indicate the fraction of residues that contain outliers for  $\geq 3$ , 2, 1 and 0 types of geometric quality criteria respectively. A grey segment represents the fraction of residues that are not modelled. The numeric value for each fraction is indicated below the corresponding segment, with a dot representing fractions  $\leq 5\%$ . The upper red bar (where present) indicates the fraction of residues that have poor fit to the electron density. The numeric value is given above the bar.

Mol	Chain	Length	Quality of chain
1	A	341	
1	B	341	

The following table lists non-polymeric compounds, carbohydrate monomers and non-standard residues in protein, DNA, RNA chains that are outliers for geometric or electron-density-fit criteria:

Mol	Type	Chain	Res	Chirality	Geometry	Clashes	Electron density
3	NAG	A	344	X	-	-	-

## 2 Entry composition i

There are 4 unique types of molecules in this entry. The entry contains 5758 atoms, of which 0 are hydrogens and 0 are deuteriums.

In the tables below, the ZeroOcc column contains the number of atoms modelled with zero occupancy, the AltConf column contains the number of residues with at least one atom in alternate conformation and the Trace column contains the number of residues modelled with at most 2 atoms.

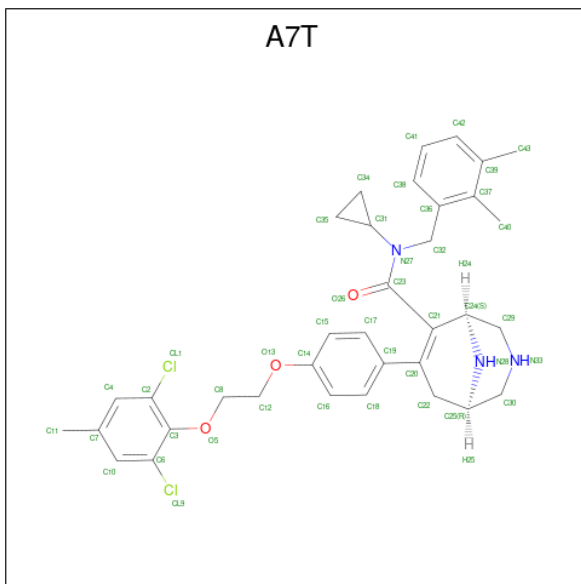
- Molecule 1 is a protein called Renin.

Mol	Chain	Residues	Atoms					ZeroOcc	AltConf	Trace
			Total	C	N	O	S			
1	A	337	Total 2609	C 1667	N 424	O 504	S 14	0	1	0
1	B	334	Total 2586	C 1651	N 421	O 500	S 14	0	1	0

There are 2 discrepancies between the modelled and reference sequences:

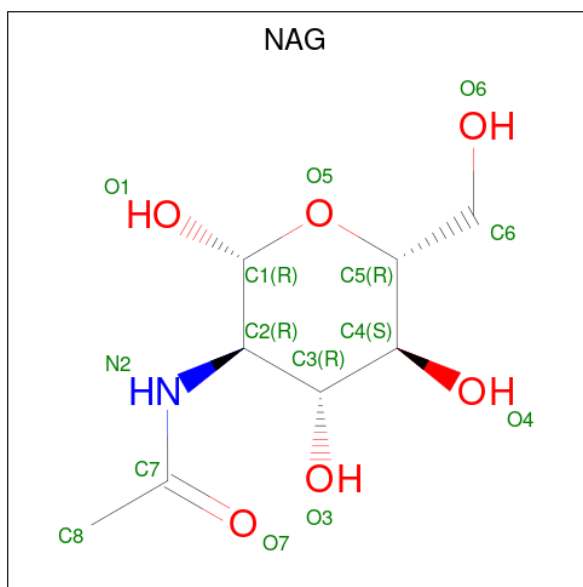
Chain	Residue	Modelled	Actual	Comment	Reference
A	341	HIS	-	expression tag	UNP P00797
B	341	HIS	-	expression tag	UNP P00797

- Molecule 2 is (1R,5S)-N-cyclopropyl-7-{4-[2-(2,6-dichloro-4-methylphenoxy)ethoxy]phenyl}-N-(2,3-dimethylbenzyl)-3,9-diazabicyclo[3.3.1]non-6-ene-6-carboxamide (three-letter code: A7T) (formula: C<sub>35</sub>H<sub>39</sub>Cl<sub>2</sub>N<sub>3</sub>O<sub>3</sub>).



Mol	Chain	Residues	Atoms				ZeroOcc	AltConf	
2	A	1	Total	C	Cl	N	O	0	0
			43	35	2	3	3		
2	B	1	Total	C	Cl	N	O	0	0
			43	35	2	3	3		

- Molecule 3 is 2-acetamido-2-deoxy-beta-D-glucopyranose (three-letter code: NAG) (formula:  $C_8H_{15}NO_6$ ).



Mol	Chain	Residues	Atoms				ZeroOcc	AltConf
3	A	1	Total	C	N	O	0	0
			14	8	1	5		
3	A	1	Total	C	N	O	0	0
			14	8	1	5		
3	B	1	Total	C	N	O	0	0
			14	8	1	5		

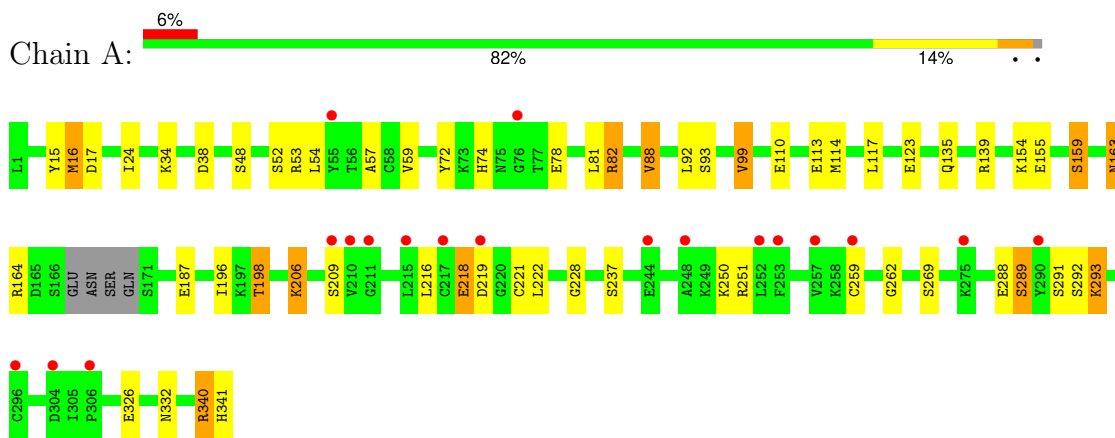
- Molecule 4 is water.

Mol	Chain	Residues	Atoms		ZeroOcc	AltConf
4	A	202	Total	O	0	0
			202	202		
4	B	233	Total	O	0	0
			233	233		

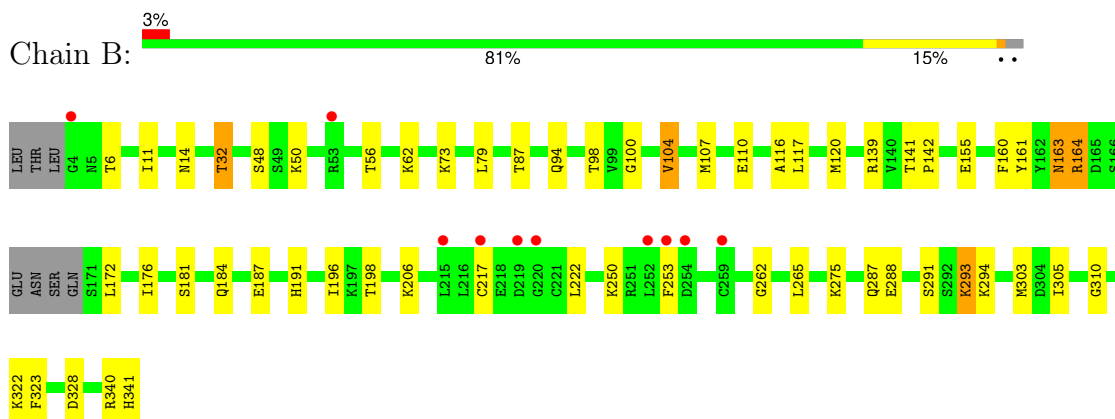
### 3 Residue-property plots [i](#)

These plots are drawn for all protein, RNA, DNA and oligosaccharide chains in the entry. The first graphic for a chain summarises the proportions of the various outlier classes displayed in the second graphic. The second graphic shows the sequence view annotated by issues in geometry and electron density. Residues are color-coded according to the number of geometric quality criteria for which they contain at least one outlier: green = 0, yellow = 1, orange = 2 and red = 3 or more. A red dot above a residue indicates a poor fit to the electron density ( $RSRZ > 2$ ). Stretches of 2 or more consecutive residues without any outlier are shown as a green connector. Residues present in the sample, but not in the model, are shown in grey.

- Molecule 1: Renin



- Molecule 1: Renin



## 4 Data and refinement statistics

Property	Value	Source
Space group	P 21 21 21	Depositor
Cell constants a, b, c, $\alpha$ , $\beta$ , $\gamma$	67.50Å 94.75Å 119.83Å 90.00° 90.00° 90.00°	Depositor
Resolution (Å)	50.00 – 2.00 50.00 – 2.00	Depositor EDS
% Data completeness (in resolution range)	91.4 (50.00-2.00) 91.4 (50.00-2.00)	Depositor EDS
$R_{merge}$	0.12	Depositor
$R_{sym}$	(Not available)	Depositor
$\langle I/\sigma(I) \rangle$ <sup>1</sup>	1.60 (at 2.00Å)	Xtrriage
Refinement program	REFMAC 5.2.0019	Depositor
R, $R_{free}$	0.195 , 0.258 0.194 , 0.256	Depositor DCC
$R_{free}$ test set	2455 reflections (5.10%)	wwPDB-VP
Wilson B-factor (Å <sup>2</sup> )	34.1	Xtrriage
Anisotropy	0.063	Xtrriage
Bulk solvent $k_{sol}$ (e/Å <sup>3</sup> ), $B_{sol}$ (Å <sup>2</sup> )	0.36 , 50.8	EDS
L-test for twinning <sup>2</sup>	$\langle  L  \rangle = 0.48$ , $\langle L^2 \rangle = 0.31$	Xtrriage
Estimated twinning fraction	No twinning to report.	Xtrriage
$F_o, F_c$ correlation	0.96	EDS
Total number of atoms	5758	wwPDB-VP
Average B, all atoms (Å <sup>2</sup> )	39.0	wwPDB-VP

Xtrriage's analysis on translational NCS is as follows: *The largest off-origin peak in the Patterson function is 4.07% of the height of the origin peak. No significant pseudotranslation is detected.*

<sup>1</sup>Intensities estimated from amplitudes.

<sup>2</sup>Theoretical values of  $\langle |L| \rangle$ ,  $\langle L^2 \rangle$  for acentric reflections are 0.5, 0.333 respectively for untwinned datasets, and 0.375, 0.2 for perfectly twinned datasets.

## 5 Model quality [i](#)

### 5.1 Standard geometry [i](#)

Bond lengths and bond angles in the following residue types are not validated in this section: A7T, NAG

The Z score for a bond length (or angle) is the number of standard deviations the observed value is removed from the expected value. A bond length (or angle) with  $|Z| > 5$  is considered an outlier worth inspection. RMSZ is the root-mean-square of all Z scores of the bond lengths (or angles).

Mol	Chain	Bond lengths		Bond angles	
		RMSZ	# Z  >5	RMSZ	# Z  >5
1	A	0.58	0/2670	0.67	0/3620
1	B	0.64	0/2647	0.73	2/3588 (0.1%)
All	All	0.61	0/5317	0.70	2/7208 (0.0%)

There are no bond length outliers.

All (2) bond angle outliers are listed below:

Mol	Chain	Res	Type	Atoms	Z	Observed(°)	Ideal(°)
1	B	104	VAL	CB-CA-C	-7.91	96.37	111.40
1	B	164	ARG	NE-CZ-NH1	5.07	122.83	120.30

There are no chirality outliers.

There are no planarity outliers.

### 5.2 Too-close contacts [i](#)

In the following table, the Non-H and H(model) columns list the number of non-hydrogen atoms and hydrogen atoms in the chain respectively. The H(added) column lists the number of hydrogen atoms added and optimized by MolProbity. The Clashes column lists the number of clashes within the asymmetric unit, whereas Symm-Clashes lists symmetry-related clashes.

Mol	Chain	Non-H	H(model)	H(added)	Clashes	Symm-Clashes
1	A	2609	0	2541	41	0
1	B	2586	0	2510	33	0
2	A	43	0	39	3	0
2	B	43	0	39	2	0
3	A	28	0	26	0	0
3	B	14	0	13	0	0
4	A	202	0	0	9	0

*Continued on next page...*



*Continued from previous page...*

Mol	Chain	Non-H	H(model)	H(added)	Clashes	Symm-Clashes
4	B	233	0	0	9	0
All	All	5758	0	5168	76	0

The all-atom clashscore is defined as the number of clashes found per 1000 atoms (including hydrogen atoms). The all-atom clashscore for this structure is 7.

All (76) close contacts within the same asymmetric unit are listed below, sorted by their clash magnitude.

Atom-1	Atom-2	Interatomic distance (Å)	Clash overlap (Å)
1:B:191[A]:HIS:CD2	4:B:365:HOH:O	2.21	0.92
1:A:259:CYS:HB3	1:A:289:SER:O	1.72	0.89
1:A:57:ALA:HB1	1:A:114:MET:HE3	1.58	0.85
1:A:154:LYS:HD3	4:A:420:HOH:O	1.82	0.79
1:A:187:GLU:HB3	1:A:340:ARG:HD3	1.64	0.79
1:B:155:GLU:HG3	4:B:397:HOH:O	1.89	0.71
1:B:250:LYS:O	1:B:250:LYS:HG3	1.89	0.71
1:B:98:THR:HG23	4:B:422:HOH:O	1.90	0.71
1:A:57:ALA:HB1	1:A:114:MET:CE	2.20	0.70
1:A:48:SER:HB2	1:A:110:GLU:HB3	1.75	0.68
1:B:32:THR:HG22	4:B:478:HOH:O	1.94	0.67
1:B:305:ILE:O	1:B:310:GLY:HA3	1.95	0.66
4:A:511:HOH:O	1:B:56:THR:HG21	1.95	0.65
1:B:191[A]:HIS:HD2	4:B:365:HOH:O	1.63	0.65
1:A:38:ASP:OD1	1:A:228:GLY:HA3	1.96	0.65
1:A:221:CYS:HB2	4:A:373:HOH:O	1.99	0.63
1:A:163:ASN:HD22	1:A:164:ARG:H	1.46	0.62
1:A:123:GLU:HG2	4:A:531:HOH:O	2.00	0.60
1:A:218:GLU:O	1:A:219:ASP:HB2	2.01	0.60
1:B:163:ASN:HD22	1:B:164:ARG:H	1.49	0.60
1:A:57:ALA:CB	1:A:114:MET:HE3	2.31	0.58
1:A:163:ASN:ND2	1:A:164:ARG:H	2.04	0.56
1:A:209:SER:HB2	1:A:269:SER:HB2	1.87	0.56
1:A:206:LYS:HD2	4:A:473:HOH:O	2.06	0.55
1:A:139:ARG:HD3	4:A:361:HOH:O	2.07	0.53
1:A:196:ILE:CD1	1:A:222:LEU:HD22	2.39	0.53
1:A:24:ILE:HG22	1:A:99:VAL:HG13	1.91	0.53
1:A:135:GLN:NE2	4:A:404:HOH:O	2.33	0.53
1:B:163:ASN:ND2	1:B:164:ARG:H	2.05	0.53
1:A:291:SER:OG	1:A:293:LYS:HD2	2.11	0.51
1:A:293:LYS:HD2	1:A:293:LYS:H	1.75	0.51
1:B:50:LYS:HE3	4:B:429:HOH:O	2.10	0.51

*Continued on next page...*

*Continued from previous page...*

Atom-1	Atom-2	Interatomic distance (Å)	Clash overlap (Å)
1:B:139:ARG:HD3	4:B:382:HOH:O	2.10	0.51
1:A:72:TYR:HE2	1:A:93:SER:HB3	1.76	0.51
1:B:48:SER:HB2	1:B:110:GLU:HB3	1.92	0.51
1:A:16:MET:O	1:A:17:ASP:HB2	2.11	0.51
1:A:82:ARG:HG2	1:A:82:ARG:O	2.11	0.50
1:A:163:ASN:ND2	1:A:341:HIS:HD2	2.10	0.50
1:A:163:ASN:ND2	1:A:341:HIS:CD2	2.81	0.49
1:B:196:ILE:CD1	1:B:222:LEU:HD22	2.42	0.49
1:B:291:SER:OG	1:B:293:LYS:HD2	2.12	0.49
1:B:187:GLU:HG2	1:B:340:ARG:HE	1.79	0.48
1:A:57:ALA:CB	1:A:114:MET:CE	2.90	0.48
1:B:262:GLY:HA3	1:B:287:GLN:HE22	1.79	0.48
1:A:154:LYS:HG2	1:A:155:GLU:HG2	1.97	0.47
1:B:98:THR:HG22	4:B:468:HOH:O	2.14	0.47
1:A:15:TYR:CD1	1:A:123:GLU:HG3	2.50	0.47
2:B:342:A7T:C19	2:B:342:A7T:H31	2.45	0.47
1:A:53:ARG:HG3	1:A:59:VAL:HG22	1.97	0.47
1:B:184:GLN:HE21	1:B:184:GLN:HA	1.79	0.47
1:B:11:ILE:HD12	1:B:172:LEU:HD11	1.96	0.47
1:A:34:LYS:NZ	1:B:56:THR:HG22	2.30	0.46
1:B:116:ALA:O	1:B:120:MET:HG2	2.15	0.46
1:A:78:GLU:HA	1:A:78:GLU:OE1	2.16	0.46
1:B:160:PHE:CZ	1:B:176:ILE:HD12	2.52	0.45
1:A:159:SER:HB3	1:A:326:GLU:HA	1.98	0.45
1:B:164:ARG:HD2	4:B:432:HOH:O	2.16	0.45
1:B:217:CYS:SG	1:B:217:CYS:O	2.75	0.45
1:B:322:LYS:HG2	1:B:323:PHE:CE2	2.52	0.45
1:B:161:TYR:OH	1:B:341:HIS:HD2	2.01	0.44
2:A:342:A7T:C18	2:A:342:A7T:C23	2.96	0.43
1:B:73:LYS:HB2	1:B:94:GLN:HB3	2.00	0.43
1:A:163:ASN:HD22	1:A:341:HIS:CD2	2.37	0.42
2:A:342:A7T:H43	2:A:342:A7T:H40	1.60	0.42
1:A:198:THR:HG23	1:A:332:ASN:OD1	2.19	0.42
1:B:14:ASN:OD1	1:B:14:ASN:C	2.57	0.42
1:B:141:THR:HA	1:B:142:PRO:HD3	1.78	0.42
1:A:74:HIS:CD2	4:A:369:HOH:O	2.73	0.42
1:A:81:LEU:HB3	1:A:88:VAL:HG13	2.00	0.42
2:B:342:A7T:H40	2:B:342:A7T:H43	1.69	0.42
2:A:342:A7T:H15	2:A:342:A7T:H12A	1.89	0.41
1:B:328:ASP:OD1	1:B:328:ASP:C	2.58	0.41
1:A:34:LYS:HZ2	1:B:56:THR:HG22	1.86	0.41

*Continued on next page...*

*Continued from previous page...*

Atom-1	Atom-2	Interatomic distance (Å)	Clash overlap (Å)
1:A:74:HIS:HD2	4:A:369:HOH:O	2.02	0.41
1:A:293:LYS:HD2	1:A:293:LYS:N	2.37	0.40
1:A:34:LYS:HZ2	1:B:56:THR:CG2	2.34	0.40

There are no symmetry-related clashes.

## 5.3 Torsion angles [i](#)

### 5.3.1 Protein backbone [i](#)

In the following table, the Percentiles column shows the percent Ramachandran outliers of the chain as a percentile score with respect to all X-ray entries followed by that with respect to entries of similar resolution.

The Analysed column shows the number of residues for which the backbone conformation was analysed, and the total number of residues.

Mol	Chain	Analysed	Favoured	Allowed	Outliers	Percentiles
1	A	334/341 (98%)	322 (96%)	10 (3%)	2 (1%)	22 17
1	B	331/341 (97%)	321 (97%)	9 (3%)	1 (0%)	37 35
All	All	665/682 (98%)	643 (97%)	19 (3%)	3 (0%)	25 21

All (3) Ramachandran outliers are listed below:

Mol	Chain	Res	Type
1	A	251	ARG
1	A	262	GLY
1	B	100	GLY

### 5.3.2 Protein sidechains [i](#)

In the following table, the Percentiles column shows the percent sidechain outliers of the chain as a percentile score with respect to all X-ray entries followed by that with respect to entries of similar resolution.

The Analysed column shows the number of residues for which the sidechain conformation was analysed, and the total number of residues.

*Continued on next page...*

*Continued from previous page...*

Mol	Chain	Analysed	Rotameric	Outliers	Percentiles	
1	A	288/291 (99%)	266 (92%)	22 (8%)	11	7
1	B	285/291 (98%)	266 (93%)	19 (7%)	13	10
All	All	573/582 (98%)	532 (93%)	41 (7%)	12	8

All (41) residues with a non-rotameric sidechain are listed below:

Mol	Chain	Res	Type
1	A	16	MET
1	A	52	SER
1	A	54	LEU
1	A	82	ARG
1	A	88	VAL
1	A	92	LEU
1	A	99	VAL
1	A	113	GLU
1	A	117	LEU
1	A	159	SER
1	A	163	ASN
1	A	198	THR
1	A	206	LYS
1	A	216	LEU
1	A	218	GLU
1	A	237	SER
1	A	250	LYS
1	A	288	GLU
1	A	289	SER
1	A	292	SER
1	A	293	LYS
1	A	340	ARG
1	B	6	THR
1	B	32	THR
1	B	62	LYS
1	B	79	LEU
1	B	87	THR
1	B	104	VAL
1	B	107	MET
1	B	117	LEU
1	B	163	ASN
1	B	181	SER

*Continued on next page...*

*Continued from previous page...*

Mol	Chain	Res	Type
1	B	198	THR
1	B	206	LYS
1	B	253	PHE
1	B	265	LEU
1	B	275	LYS
1	B	288	GLU
1	B	293	LYS
1	B	294	LYS
1	B	303	MET

Sometimes sidechains can be flipped to improve hydrogen bonding and reduce clashes. All (15) such sidechains are listed below:

Mol	Chain	Res	Type
1	A	135	GLN
1	A	150	GLN
1	A	163	ASN
1	A	194	ASN
1	A	202	GLN
1	A	287	GLN
1	A	341	HIS
1	B	150	GLN
1	B	163	ASN
1	B	184	GLN
1	B	194	ASN
1	B	202	GLN
1	B	287	GLN
1	B	331	ASN
1	B	341	HIS

### 5.3.3 RNA [i](#)

There are no RNA molecules in this entry.

### 5.4 Non-standard residues in protein, DNA, RNA chains [i](#)

There are no non-standard protein/DNA/RNA residues in this entry.

### 5.5 Carbohydrates [i](#)

There are no oligosaccharides in this entry.

## 5.6 Ligand geometry

5 ligands are modelled in this entry.

In the following table, the Counts columns list the number of bonds (or angles) for which Mogul statistics could be retrieved, the number of bonds (or angles) that are observed in the model and the number of bonds (or angles) that are defined in the Chemical Component Dictionary. The Link column lists molecule types, if any, to which the group is linked. The Z score for a bond length (or angle) is the number of standard deviations the observed value is removed from the expected value. A bond length (or angle) with  $|Z| > 2$  is considered an outlier worth inspection. RMSZ is the root-mean-square of all Z scores of the bond lengths (or angles).

Mol	Type	Chain	Res	Link	Bond lengths			Bond angles		
					Counts	RMSZ	# Z  > 2	Counts	RMSZ	# Z  > 2
2	A7T	B	342	-	44,48,48	1.26	5 (11%)	59,69,69	2.56	14 (23%)
2	A7T	A	342	-	44,48,48	1.41	7 (15%)	59,69,69	2.72	17 (28%)
3	NAG	B	343	1	14,14,15	0.53	0	17,19,21	1.81	5 (29%)
3	NAG	A	344	1	14,14,15	0.89	1 (7%)	17,19,21	1.75	6 (35%)
3	NAG	A	343	1	14,14,15	0.64	0	17,19,21	0.95	1 (5%)

In the following table, the Chirals column lists the number of chiral outliers, the number of chiral centers analysed, the number of these observed in the model and the number defined in the Chemical Component Dictionary. Similar counts are reported in the Torsion and Rings columns. '-' means no outliers of that kind were identified.

Mol	Type	Chain	Res	Link	Chirals	Torsions	Rings
2	A7T	B	342	-	-	2/27/51/51	0/6/6/6
2	A7T	A	342	-	-	4/27/51/51	0/6/6/6
3	NAG	B	343	1	-	2/6/23/26	0/1/1/1
3	NAG	A	344	1	1/1/5/7	2/6/23/26	0/1/1/1
3	NAG	A	343	1	-	4/6/23/26	0/1/1/1

All (13) bond length outliers are listed below:

Mol	Chain	Res	Type	Atoms	Z	Observed(Å)	Ideal(Å)
2	A	342	A7T	C3-C2	4.15	1.49	1.41
2	A	342	A7T	C3-C6	3.90	1.48	1.41
2	A	342	A7T	C25-N28	-3.72	1.44	1.47
2	B	342	A7T	C3-C2	3.63	1.48	1.41
2	B	342	A7T	C3-C6	3.18	1.47	1.41
2	A	342	A7T	C6-CL9	2.84	1.80	1.73
2	B	342	A7T	C19-C20	2.83	1.53	1.49
2	A	342	A7T	C2-CL1	2.75	1.80	1.73

*Continued on next page...*

Continued from previous page...

Mol	Chain	Res	Type	Atoms	Z	Observed(Å)	Ideal(Å)
2	A	342	A7T	C22-C20	2.52	1.53	1.50
2	B	342	A7T	C6-CL9	2.48	1.79	1.73
3	A	344	NAG	C1-C2	2.33	1.55	1.52
2	B	342	A7T	C34-C31	2.17	1.53	1.48
2	A	342	A7T	C34-C31	2.10	1.53	1.48

All (43) bond angle outliers are listed below:

Mol	Chain	Res	Type	Atoms	Z	Observed(°)	Ideal(°)
2	A	342	A7T	C30-N33-C29	10.28	123.70	111.78
2	A	342	A7T	C34-C31-N27	-9.03	107.23	118.46
2	B	342	A7T	C30-N33-C29	8.22	121.31	111.78
2	A	342	A7T	C32-N27-C31	-8.17	110.27	118.34
2	B	342	A7T	C34-C31-N27	-7.70	108.88	118.46
2	B	342	A7T	C35-C31-N27	-7.44	109.21	118.46
2	B	342	A7T	C36-C32-N27	7.19	123.95	113.14
2	A	342	A7T	C36-C32-N27	5.91	122.03	113.14
2	A	342	A7T	C35-C31-N27	-5.66	111.42	118.46
2	B	342	A7T	C32-N27-C31	-5.15	113.25	118.34
2	B	342	A7T	C30-C25-C22	-4.69	107.25	112.68
2	B	342	A7T	C21-C23-N27	4.12	123.94	119.66
3	B	343	NAG	C4-C3-C2	3.92	116.76	111.02
3	B	343	NAG	C1-O5-C5	3.84	117.33	112.19
2	A	342	A7T	C21-C23-N27	3.24	123.02	119.66
2	B	342	A7T	C4-C7-C10	3.21	121.67	118.11
3	A	344	NAG	O5-C5-C4	-3.09	103.32	110.83
2	B	342	A7T	C25-C22-C20	3.05	115.78	110.20
2	B	342	A7T	C10-C6-CL9	3.02	123.40	118.45
2	A	342	A7T	C4-C7-C10	3.02	121.46	118.11
2	A	342	A7T	C36-C37-C39	2.98	120.72	119.29
2	B	342	A7T	C29-C24-C21	-2.97	109.07	112.25
2	A	342	A7T	C10-C6-C3	-2.72	118.28	122.48
3	A	344	NAG	O5-C1-C2	-2.65	107.19	111.29
3	A	344	NAG	C3-C4-C5	-2.63	105.46	110.23
2	B	342	A7T	C11-C7-C4	-2.56	117.45	120.92
2	A	342	A7T	C30-C25-C22	-2.55	109.73	112.68
3	A	344	NAG	C1-C2-N2	2.52	114.41	110.43
2	A	342	A7T	C3-C2-CL1	2.49	121.69	118.40
3	B	343	NAG	C3-C4-C5	2.48	114.73	110.23
3	B	343	NAG	O3-C3-C4	-2.43	104.64	110.38
2	A	342	A7T	C17-C19-C20	-2.30	118.04	121.00
3	A	344	NAG	C6-C5-C4	2.29	118.65	113.02

Continued on next page...

Continued from previous page...

Mol	Chain	Res	Type	Atoms	Z	Observed(°)	Ideal(°)
3	A	343	NAG	C1-O5-C5	2.29	115.26	112.19
3	A	344	NAG	C1-O5-C5	-2.22	109.22	112.19
2	A	342	A7T	C32-C36-C37	-2.18	116.64	120.54
2	A	342	A7T	C11-C7-C4	-2.17	117.98	120.92
2	A	342	A7T	C25-C22-C20	2.15	114.14	110.20
2	B	342	A7T	C16-C18-C19	2.09	123.04	120.80
2	A	342	A7T	C3-C6-CL9	2.08	121.14	118.40
2	A	342	A7T	C6-C10-C7	2.06	121.86	120.58
3	B	343	NAG	O5-C1-C2	-2.05	108.12	111.29
2	B	342	A7T	C32-N27-C23	2.04	122.65	116.97

All (1) chirality outliers are listed below:

Mol	Chain	Res	Type	Atom
3	A	344	NAG	C1

All (14) torsion outliers are listed below:

Mol	Chain	Res	Type	Atoms
3	A	344	NAG	C8-C7-N2-C2
3	B	343	NAG	C4-C5-C6-O6
3	A	343	NAG	C8-C7-N2-C2
3	A	344	NAG	O7-C7-N2-C2
3	A	343	NAG	O5-C5-C6-O6
2	A	342	A7T	O13-C12-C8-O5
3	B	343	NAG	O5-C5-C6-O6
3	A	343	NAG	O7-C7-N2-C2
3	A	343	NAG	C4-C5-C6-O6
2	B	342	A7T	O13-C12-C8-O5
2	B	342	A7T	C8-C12-O13-C14
2	A	342	A7T	C8-C12-O13-C14
2	A	342	A7T	C35-C31-N27-C23
2	A	342	A7T	C34-C31-N27-C23

There are no ring outliers.

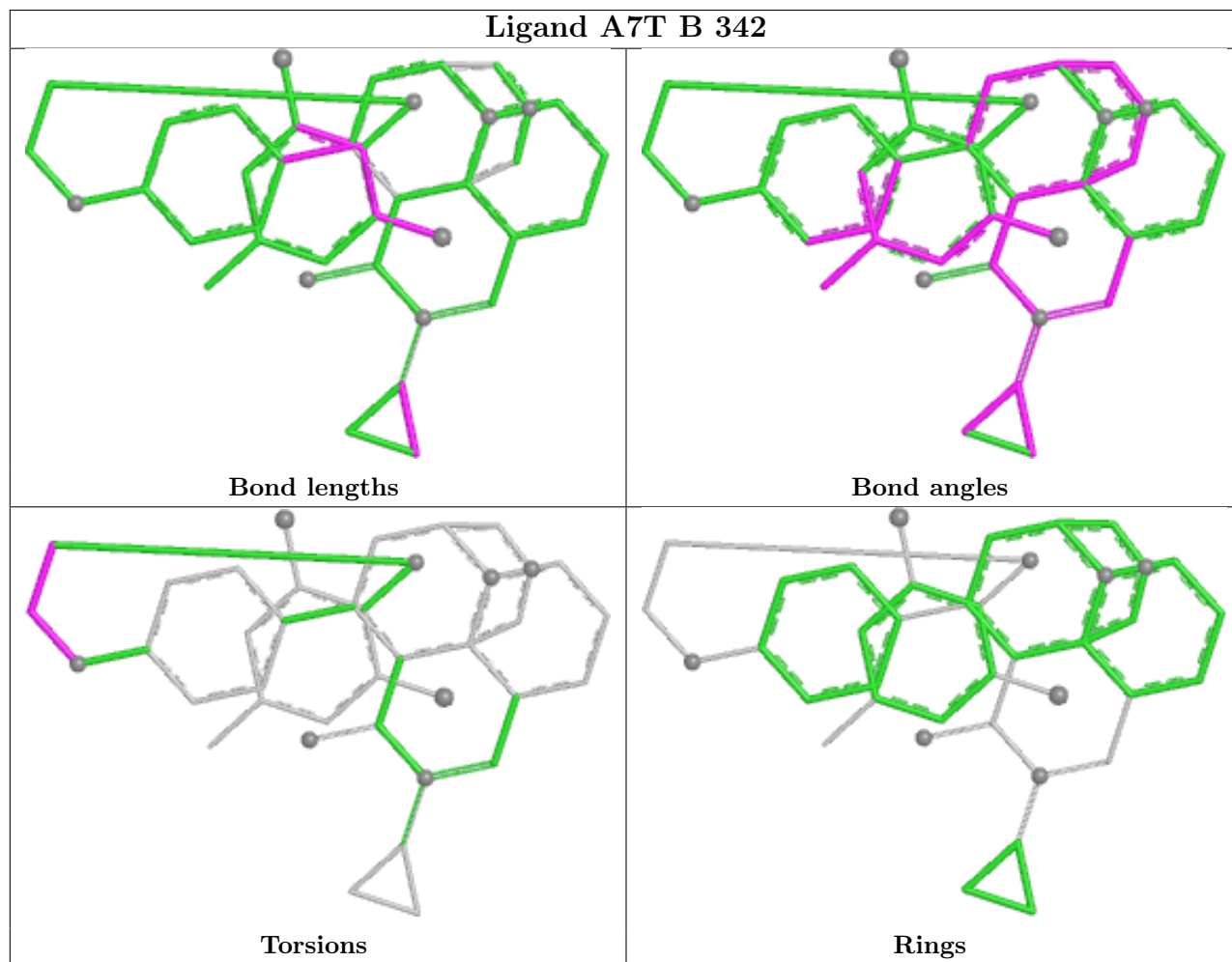
2 monomers are involved in 5 short contacts:

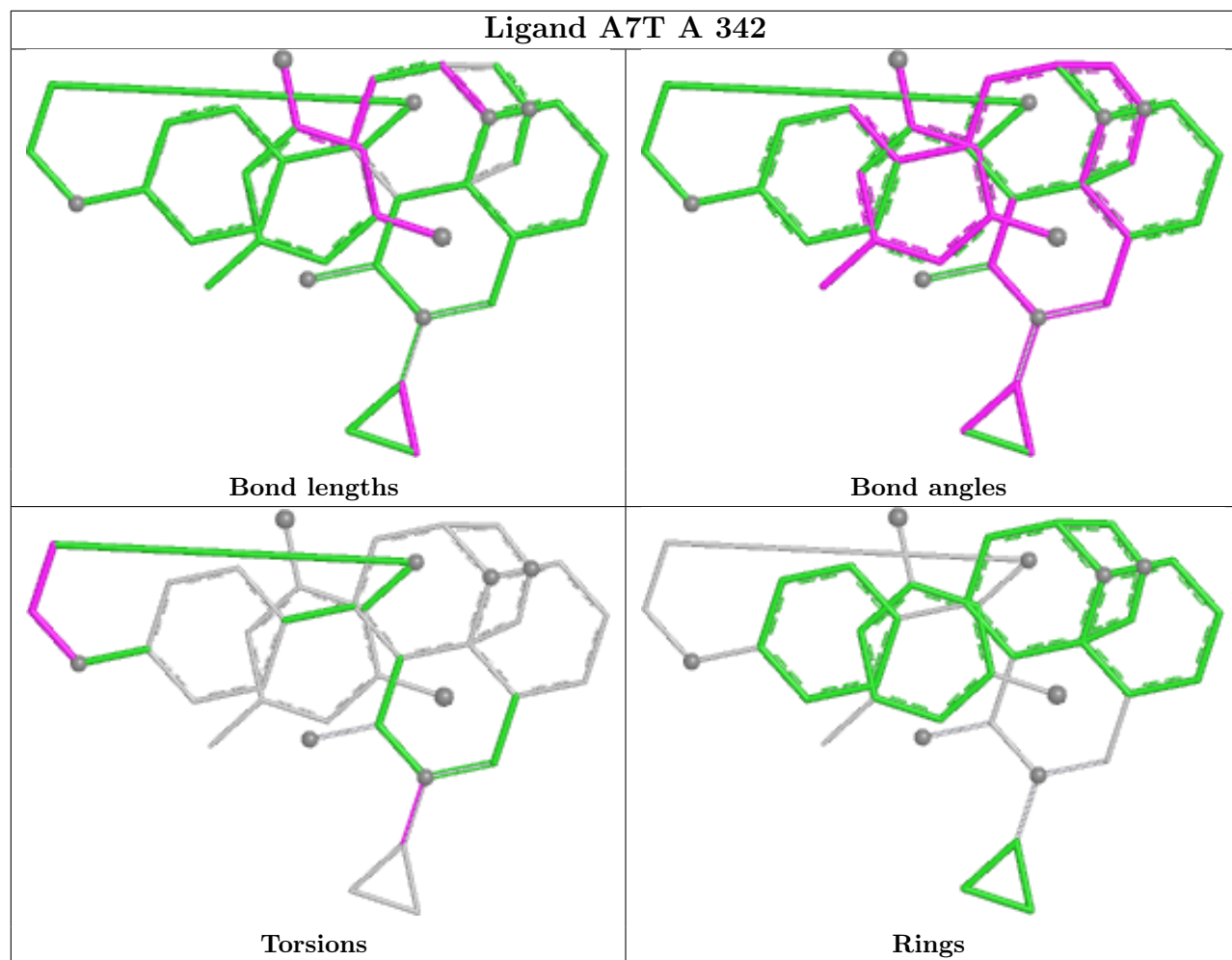
Mol	Chain	Res	Type	Clashes	Symm-Clashes
2	B	342	A7T	2	0
2	A	342	A7T	3	0

The following is a two-dimensional graphical depiction of Mogul quality analysis of bond lengths,



bond angles, torsion angles, and ring geometry for all instances of the Ligand of Interest. In addition, ligands with molecular weight > 250 and outliers as shown on the validation Tables will also be included. For torsion angles, if less than 5% of the Mogul distribution of torsion angles is within 10 degrees of the torsion angle in question, then that torsion angle is considered an outlier. Any bond that is central to one or more torsion angles identified as an outlier by Mogul will be highlighted in the graph. For rings, the root-mean-square deviation (RMSD) between the ring in question and similar rings identified by Mogul is calculated over all ring torsion angles. If the average RMSD is greater than 60 degrees and the minimal RMSD between the ring in question and any Mogul-identified rings is also greater than 60 degrees, then that ring is considered an outlier. The outliers are highlighted in purple. The color gray indicates Mogul did not find sufficient equivalents in the CSD to analyse the geometry.





## 5.7 Other polymers [i](#)

There are no such residues in this entry.

## 5.8 Polymer linkage issues [i](#)

There are no chain breaks in this entry.

## 6 Fit of model and data

### 6.1 Protein, DNA and RNA chains

In the following table, the column labelled ‘#RSRZ > 2’ contains the number (and percentage) of RSRZ outliers, followed by percent RSRZ outliers for the chain as percentile scores relative to all X-ray entries and entries of similar resolution. The OWAB column contains the minimum, median, 95<sup>th</sup> percentile and maximum values of the occupancy-weighted average B-factor per residue. The column labelled ‘Q < 0.9’ lists the number of (and percentage) of residues with an average occupancy less than 0.9.

Mol	Chain	Analysed	<RSRZ>	#RSRZ>2	OWAB(Å <sup>2</sup> )	Q<0.9
1	A	337/341 (98%)	0.41	19 (5%) 31 29	14, 40, 67, 77	1 (0%)
1	B	334/341 (97%)	0.02	10 (2%) 52 51	17, 32, 52, 66	1 (0%)
All	All	671/682 (98%)	0.22	29 (4%) 40 38	14, 37, 62, 77	2 (0%)

All (29) RSRZ outliers are listed below:

Mol	Chain	Res	Type	RSRZ
1	A	217	CYS	4.5
1	B	252	LEU	4.4
1	A	253	PHE	4.2
1	B	253	PHE	3.9
1	B	217	CYS	3.7
1	A	76	GLY	3.4
1	B	4	GLY	3.3
1	A	248	ALA	3.0
1	A	215	LEU	2.9
1	A	209	SER	2.8
1	A	244	GLU	2.7
1	A	210	VAL	2.6
1	A	259	CYS	2.5
1	A	275	LYS	2.5
1	B	254	ASP	2.5
1	A	257	VAL	2.4
1	B	215	LEU	2.3
1	A	304	ASP	2.3
1	A	55	TYR	2.3
1	A	252	LEU	2.3
1	A	219	ASP	2.3
1	A	296	CYS	2.2
1	B	220	GLY	2.2
1	A	211	GLY	2.1

*Continued on next page...*

*Continued from previous page...*

Mol	Chain	Res	Type	RSRZ
1	B	259	CYS	2.1
1	B	219	ASP	2.1
1	A	290	TYR	2.1
1	B	53	ARG	2.0
1	A	306	PRO	2.0

## 6.2 Non-standard residues in protein, DNA, RNA chains [i](#)

There are no non-standard protein/DNA/RNA residues in this entry.

## 6.3 Carbohydrates [i](#)

There are no monosaccharides in this entry.

## 6.4 Ligands [i](#)

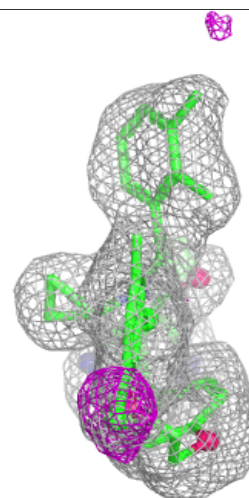
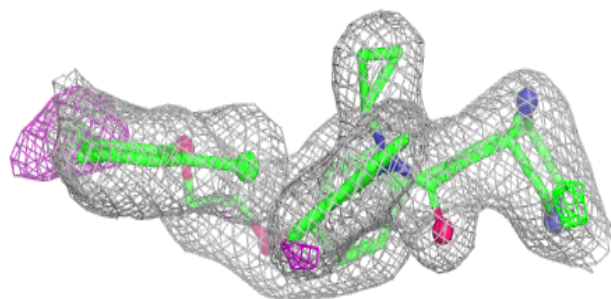
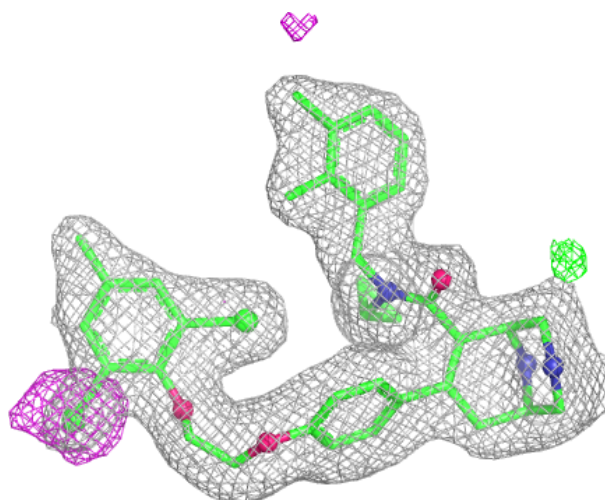
In the following table, the Atoms column lists the number of modelled atoms in the group and the number defined in the chemical component dictionary. The B-factors column lists the minimum, median, 95<sup>th</sup> percentile and maximum values of B factors of atoms in the group. The column labelled 'Q< 0.9' lists the number of atoms with occupancy less than 0.9.

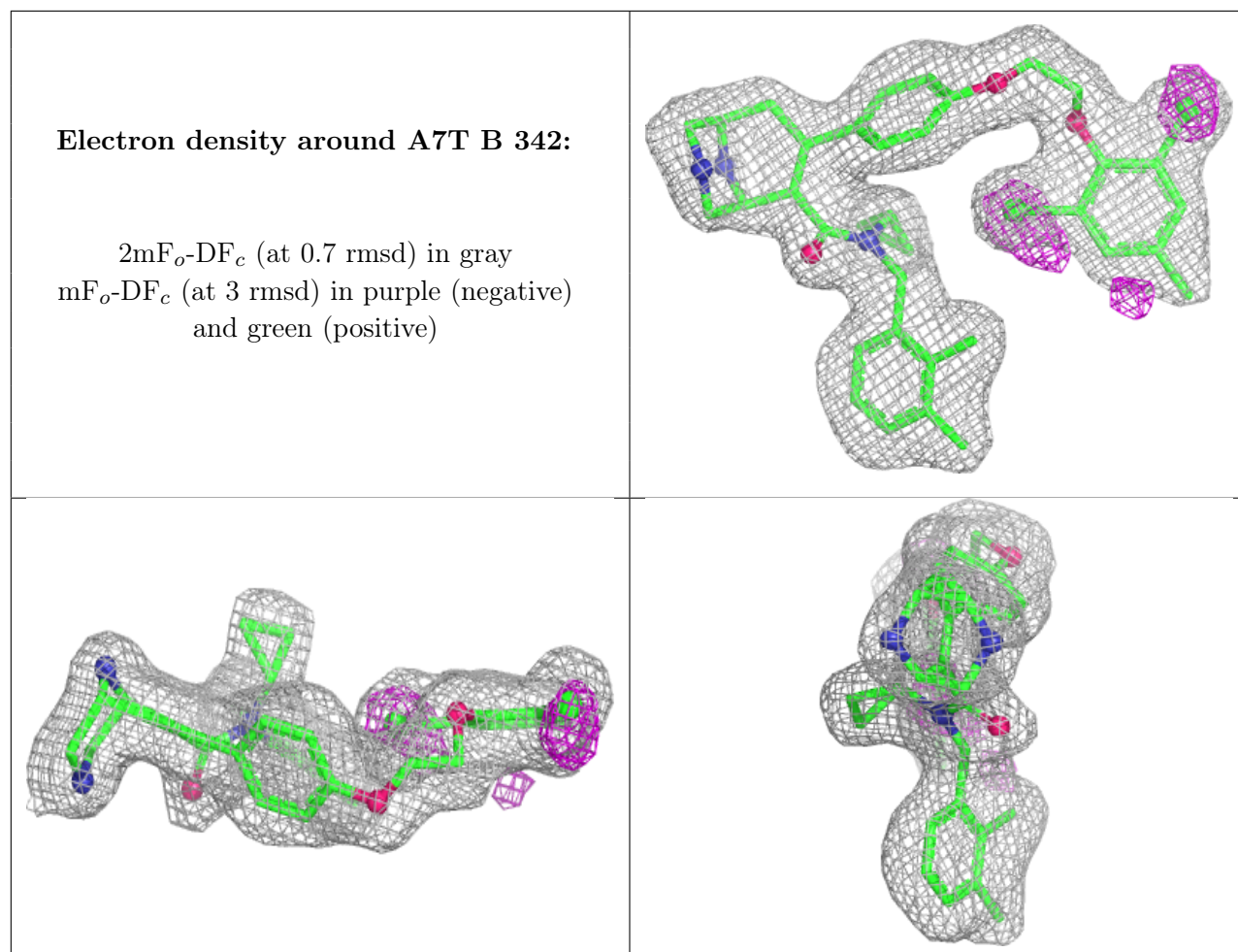
Mol	Type	Chain	Res	Atoms	RSCC	RSR	B-factors(Å <sup>2</sup> )	Q<0.9
3	NAG	A	343	14/15	0.71	0.14	56,62,65,66	0
3	NAG	A	344	14/15	0.74	0.14	65,68,68,68	0
3	NAG	B	343	14/15	0.80	0.12	50,56,59,59	0
2	A7T	A	342	43/43	0.89	0.10	34,38,51,52	0
2	A7T	B	342	43/43	0.91	0.09	26,30,41,43	0

The following is a graphical depiction of the model fit to experimental electron density of all instances of the Ligand of Interest. In addition, ligands with molecular weight > 250 and outliers as shown on the geometry validation Tables will also be included. Each fit is shown from different orientation to approximate a three-dimensional view.

**Electron density around A7T A 342:**

$2mF_o-DF_c$  (at 0.7 rmsd) in gray  
 $mF_o-DF_c$  (at 3 rmsd) in purple (negative)  
and green (positive)





## 6.5 Other polymers [i](#)

There are no such residues in this entry.