



Full wwPDB X-ray Structure Validation Report ⓘ

Nov 2, 2024 – 10:24 PM EDT

PDB ID : 3EE6
Title : Crystal Structure Analysis of Tripeptidyl peptidase -I
Authors : Pal, A.; Kraetzner, R.; Grapp, M.; Gruene, T.; Schreiber, K.; Granborg, M.;
Urlaub, H.; Asif, A.R.; Becker, S.; Gartner, J.; Sheldrick, G.M.; Steinfeld, R.
Deposited on : 2008-09-04
Resolution : 2.35 Å(reported)

This is a Full wwPDB X-ray Structure Validation Report for a publicly released PDB entry.

We welcome your comments at validation@mail.wwpdb.org

A user guide is available at

<https://www.wwpdb.org/validation/2017/XrayValidationReportHelp>

with specific help available everywhere you see the ⓘ symbol.

The types of validation reports are described at

<http://www.wwpdb.org/validation/2017/FAQs#types>.

The following versions of software and data (see [references ⓘ](#)) were used in the production of this report:

MolProbity : 4.02b-467
Mogul : 2022.3.0, CSD as543be (2022)
Xtriage (Phenix) : 1.20.1
EDS : 3.0
Percentile statistics : 20231227.v01 (using entries in the PDB archive December 27th 2023)
CCP4 : 9.0.003 (Gargrove)
Density-Fitness : 1.0.11
Ideal geometry (proteins) : Engh & Huber (2001)
Ideal geometry (DNA, RNA) : Parkinson et al. (1996)
Validation Pipeline (wwPDB-VP) : 2.39

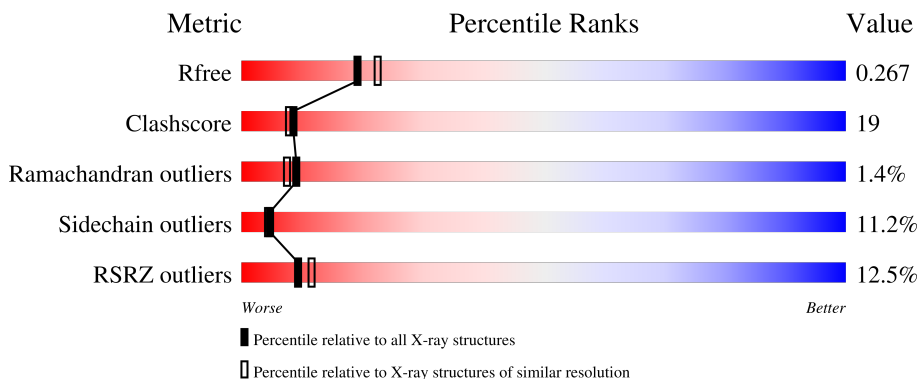
1 Overall quality at a glance

The following experimental techniques were used to determine the structure:

X-RAY DIFFRACTION

The reported resolution of this entry is 2.35 Å.

Percentile scores (ranging between 0-100) for global validation metrics of the entry are shown in the following graphic. The table shows the number of entries on which the scores are based.



Metric	Whole archive (#Entries)	Similar resolution (#Entries, resolution range(Å))
R_{free}	164625	1460 (2.36-2.36)
Clashscore	180529	1571 (2.36-2.36)
Ramachandran outliers	177936	1559 (2.36-2.36)
Sidechain outliers	177891	1559 (2.36-2.36)
RSRZ outliers	164620	1460 (2.36-2.36)

The table below summarises the geometric issues observed across the polymeric chains and their fit to the electron density. The red, orange, yellow and green segments of the lower bar indicate the fraction of residues that contain outliers for ≥ 3 , 2, 1 and 0 types of geometric quality criteria respectively. A grey segment represents the fraction of residues that are not modelled. The numeric value for each fraction is indicated below the corresponding segment, with a dot representing fractions $\leq 5\%$. The upper red bar (where present) indicates the fraction of residues that have poor fit to the electron density. The numeric value is given above the bar.

Mol	Chain	Length	Quality of chain
1	A	571	
1	B	571	

2 Entry composition

There are 7 unique types of molecules in this entry. The entry contains 8361 atoms, of which 0 are hydrogens and 0 are deuteriums.

In the tables below, the ZeroOcc column contains the number of atoms modelled with zero occupancy, the AltConf column contains the number of residues with at least one atom in alternate conformation and the Trace column contains the number of residues modelled with at most 2 atoms.

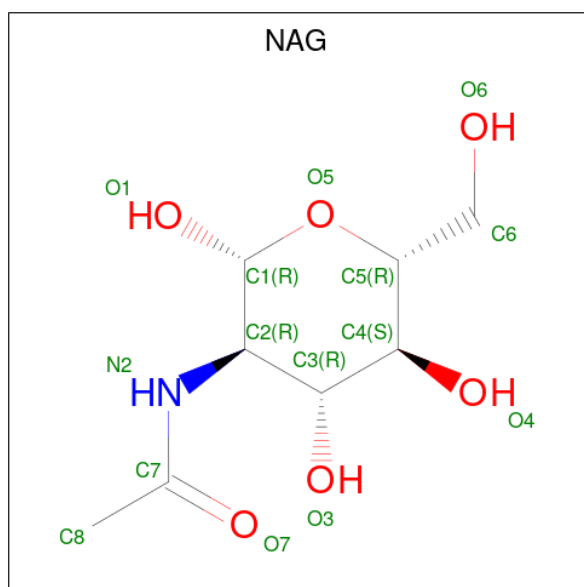
- Molecule 1 is a protein called Tripeptidyl-peptidase 1.

Mol	Chain	Residues	Atoms					ZeroOcc	AltConf	Trace
			Total	C	N	O	S			
1	A	529	4082	2588	714	769	11	0	0	0
1	B	529	4080	2587	714	768	11	0	0	0

There are 16 discrepancies between the modelled and reference sequences:

Chain	Residue	Modelled	Actual	Comment	Reference
A	564	ARG	-	expression tag	UNP O14773
A	565	SER	-	expression tag	UNP O14773
A	566	HIS	-	expression tag	UNP O14773
A	567	HIS	-	expression tag	UNP O14773
A	568	HIS	-	expression tag	UNP O14773
A	569	HIS	-	expression tag	UNP O14773
A	570	HIS	-	expression tag	UNP O14773
A	571	HIS	-	expression tag	UNP O14773
B	564	ARG	-	expression tag	UNP O14773
B	565	SER	-	expression tag	UNP O14773
B	566	HIS	-	expression tag	UNP O14773
B	567	HIS	-	expression tag	UNP O14773
B	568	HIS	-	expression tag	UNP O14773
B	569	HIS	-	expression tag	UNP O14773
B	570	HIS	-	expression tag	UNP O14773
B	571	HIS	-	expression tag	UNP O14773

- Molecule 2 is 2-acetamido-2-deoxy-beta-D-glucopyranose (three-letter code: NAG) (formula: C₈H₁₅NO₆).



Mol	Chain	Residues	Atoms				ZeroOcc	AltConf
2	A	1	Total	C	N	O	0	0
			13	8	1	4		
2	A	1	Total	C	N	O	0	0
			13	8	1	4		
2	A	1	Total	C	N	O	0	0
			13	8	1	4		
2	A	1	Total	C	N	O	0	0
			13	8	1	4		
2	B	1	Total	C	N	O	0	0
			13	8	1	4		
2	B	1	Total	C	N	O	0	0
			13	8	1	4		
2	B	1	Total	C	N	O	0	0
			13	8	1	4		

- Molecule 3 is ZINC ION (three-letter code: ZN) (formula: Zn).

Mol	Chain	Residues	Atoms		ZeroOcc	AltConf
3	A	4	Total	Zn	0	0
			4	4		
3	B	4	Total	Zn	0	0
			4	4		

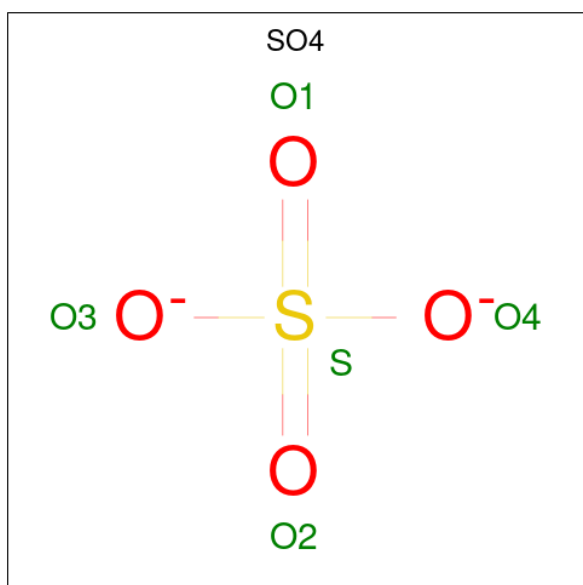
- Molecule 4 is CHLORIDE ION (three-letter code: CL) (formula: Cl).

Mol	Chain	Residues	Atoms	ZeroOcc	AltConf
4	A	1	Total Cl 1 1	0	0
4	B	1	Total Cl 1 1	0	0

- Molecule 5 is CALCIUM ION (three-letter code: CA) (formula: Ca).

Mol	Chain	Residues	Atoms	ZeroOcc	AltConf
5	A	1	Total Ca 1 1	0	0
5	B	1	Total Ca 1 1	0	0

- Molecule 6 is SULFATE ION (three-letter code: SO4) (formula: O₄S).



Mol	Chain	Residues	Atoms	ZeroOcc	AltConf
6	A	1	Total O S 5 4 1	0	0
6	B	1	Total O S 5 4 1	0	0

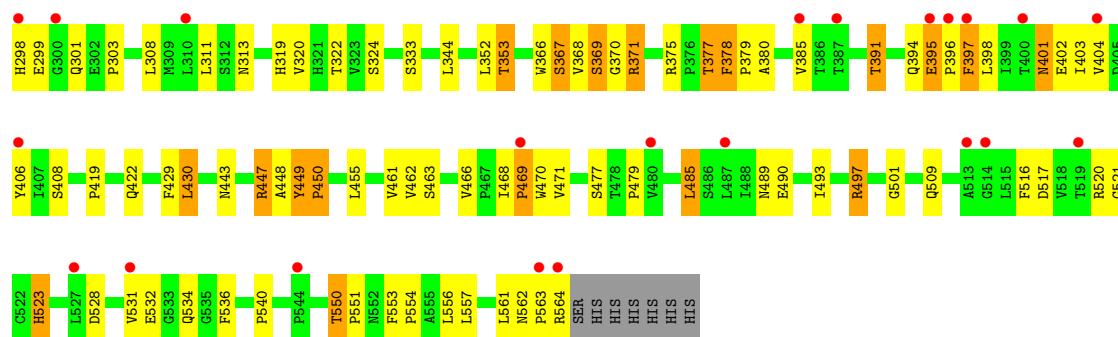
- Molecule 7 is water.

Mol	Chain	Residues	Atoms	ZeroOcc	AltConf
7	A	36	Total O 36 36	0	0

Continued on next page...

Continued from previous page...

Mol	Chain	Residues	Atoms		ZeroOcc	AltConf
7	B	37	Total	O	0	0
			37	37		



4 Data and refinement statistics

Property	Value	Source
Space group	P 21 21 2	Depositor
Cell constants a, b, c, α , β , γ	113.45Å 128.93Å 100.50Å 90.00° 90.00° 90.00°	Depositor
Resolution (Å)	39.21 – 2.35 39.21 – 2.35	Depositor EDS
% Data completeness (in resolution range)	99.5 (39.21-2.35) 99.5 (39.21-2.35)	Depositor EDS
R_{merge}	0.03	Depositor
R_{sym}	0.06	Depositor
$\langle I/\sigma(I) \rangle$ ¹	2.83 (at 2.34Å)	Xtrriage
Refinement program	REFMAC 5.4.0069	Depositor
R, R_{free}	0.218 , 0.262 0.225 , 0.267	Depositor DCC
R_{free} test set	3150 reflections (5.10%)	wwPDB-VP
Wilson B-factor (Å ²)	52.7	Xtrriage
Anisotropy	0.738	Xtrriage
Bulk solvent k_{sol} (e/Å ³), B_{sol} (Å ²)	0.32 , 68.9	EDS
L-test for twinning ²	$\langle L \rangle = 0.49$, $\langle L^2 \rangle = 0.32$	Xtrriage
Estimated twinning fraction	No twinning to report.	Xtrriage
F_o, F_c correlation	0.93	EDS
Total number of atoms	8361	wwPDB-VP
Average B, all atoms (Å ²)	68.0	wwPDB-VP

Xtrriage's analysis on translational NCS is as follows: *The largest off-origin peak in the Patterson function is 5.79% of the height of the origin peak. No significant pseudotranslation is detected.*

¹Intensities estimated from amplitudes.

²Theoretical values of $\langle |L| \rangle$, $\langle L^2 \rangle$ for acentric reflections are 0.5, 0.333 respectively for untwinned datasets, and 0.375, 0.2 for perfectly twinned datasets.

5 Model quality [i](#)

5.1 Standard geometry [i](#)

Bond lengths and bond angles in the following residue types are not validated in this section: SO4, ZN, CL, NAG, CA

The Z score for a bond length (or angle) is the number of standard deviations the observed value is removed from the expected value. A bond length (or angle) with $|Z| > 5$ is considered an outlier worth inspection. RMSZ is the root-mean-square of all Z scores of the bond lengths (or angles).

Mol	Chain	Bond lengths		Bond angles	
		RMSZ	# Z >5	RMSZ	# Z >5
1	A	0.52	0/4204	0.75	2/5741 (0.0%)
1	B	0.48	0/4202	0.71	1/5739 (0.0%)
All	All	0.50	0/8406	0.73	3/11480 (0.0%)

Chiral center outliers are detected by calculating the chiral volume of a chiral center and verifying if the center is modelled as a planar moiety or with the opposite hand. A planarity outlier is detected by checking planarity of atoms in a peptide group, atoms in a mainchain group or atoms of a sidechain that are expected to be planar.

Mol	Chain	#Chirality outliers	#Planarity outliers
1	A	0	2
1	B	0	3
All	All	0	5

There are no bond length outliers.

All (3) bond angle outliers are listed below:

Mol	Chain	Res	Type	Atoms	Z	Observed(°)	Ideal(°)
1	A	378	PHE	C-N-CD	-9.12	100.54	120.60
1	B	378	PHE	C-N-CD	-7.35	104.42	120.60
1	A	450	PRO	N-CA-C	-5.52	97.75	112.10

There are no chirality outliers.

All (5) planarity outliers are listed below:

Mol	Chain	Res	Type	Group
1	A	378	PHE	Peptide
1	A	449	TYR	Peptide
1	B	378	PHE	Peptide

Continued on next page...

Continued from previous page...

Mol	Chain	Res	Type	Group
1	B	449	TYR	Peptide,Mainchain

5.2 Too-close contacts

In the following table, the Non-H and H(model) columns list the number of non-hydrogen atoms and hydrogen atoms in the chain respectively. The H(added) column lists the number of hydrogen atoms added and optimized by MolProbity. The Clashes column lists the number of clashes within the asymmetric unit, whereas Symm-Clashes lists symmetry-related clashes.

Mol	Chain	Non-H	H(model)	H(added)	Clashes	Symm-Clashes
1	A	4082	0	3900	138	0
1	B	4080	0	3901	164	0
2	A	52	0	44	0	0
2	B	52	0	44	0	0
3	A	4	0	0	0	0
3	B	4	0	0	0	0
4	A	1	0	0	1	0
4	B	1	0	0	1	0
5	A	1	0	0	0	0
5	B	1	0	0	0	0
6	A	5	0	0	0	0
6	B	5	0	0	0	0
7	A	36	0	0	0	0
7	B	37	0	0	2	0
All	All	8361	0	7889	301	0

The all-atom clashscore is defined as the number of clashes found per 1000 atoms (including hydrogen atoms). The all-atom clashscore for this structure is 19.

All (301) close contacts within the same asymmetric unit are listed below, sorted by their clash magnitude.

Atom-1	Atom-2	Interatomic distance (Å)	Clash overlap (Å)
1:A:562:ASN:HB3	1:A:563:PRO:CD	1.57	1.33
1:A:95:THR:HG22	1:A:166:HIS:ND1	1.56	1.20
1:A:562:ASN:CB	1:A:563:PRO:HD3	1.69	1.20
1:A:20:SER:OG	1:A:158:GLN:NE2	1.78	1.17
1:B:368:VAL:HG12	1:B:369:SER:H	1.04	1.16
1:A:146:THR:CB	1:A:232:GLU:HG2	1.82	1.09
1:B:563:PRO:O	4:B:580:CL:CL	2.09	1.08
1:B:212:THR:HG22	1:B:214:GLN:H	1.19	1.03

Continued on next page...

Continued from previous page...

Atom-1	Atom-2	Interatomic distance (Å)	Clash overlap (Å)
1:A:497:ARG:NH1	1:A:561:LEU:O	1.92	1.03
1:B:101:LYS:HG3	1:B:102:TRP:N	1.71	1.02
1:B:368:VAL:HG12	1:B:369:SER:N	1.71	1.01
1:B:102:TRP:CZ3	1:B:163:LEU:HD11	1.99	0.97
1:B:371:ARG:HH11	1:B:371:ARG:CB	1.77	0.97
1:A:391:THR:HG22	1:A:455:LEU:HA	1.48	0.96
1:B:368:VAL:CG1	1:B:369:SER:H	1.77	0.96
1:A:357:ALA:HB1	1:A:474:THR:HG23	1.48	0.95
1:B:96:LEU:O	1:B:100:GLN:HG3	1.69	0.92
1:A:146:THR:CB	1:A:232:GLU:CG	2.49	0.90
1:B:102:TRP:CE3	1:B:163:LEU:HD11	2.07	0.89
1:A:34:GLY:O	1:A:143:GLY:O	1.90	0.89
1:A:463:SER:O	1:A:466:VAL:HG12	1.72	0.88
1:A:391:THR:HG21	1:A:402:GLU:OE1	1.72	0.87
1:A:562:ASN:HB3	1:A:563:PRO:HD3	0.87	0.87
1:A:368:VAL:HG12	1:A:369:SER:N	1.88	0.86
1:B:422:GLN:HE22	1:B:448:ALA:H	1.23	0.85
1:B:371:ARG:HH11	1:B:371:ARG:HB3	1.41	0.84
1:A:41:ALA:HB1	1:A:126:ILE:HD13	1.60	0.83
1:B:391:THR:HG22	1:B:455:LEU:HA	1.58	0.83
1:A:81:THR:HG22	1:A:84:ASN:H	1.45	0.82
1:B:209:TYR:CE2	1:B:550:THR:HG23	2.15	0.81
1:B:404:VAL:HG22	1:B:521:GLY:HA3	1.60	0.81
1:B:497:ARG:NH1	1:B:561:LEU:HD22	1.96	0.81
1:B:368:VAL:O	1:B:369:SER:C	2.18	0.81
1:B:102:TRP:CE3	1:B:163:LEU:CD1	2.63	0.81
1:B:209:TYR:HE2	1:B:550:THR:CG2	1.93	0.81
1:B:531:VAL:O	1:B:531:VAL:HG12	1.79	0.81
1:B:216:VAL:CG1	1:B:217:GLY:N	2.45	0.80
1:B:209:TYR:CE2	1:B:550:THR:CG2	2.66	0.79
1:A:41:ALA:HB1	1:A:126:ILE:CD1	2.13	0.79
1:B:105:ALA:O	1:B:106:ALA:HB3	1.83	0.78
1:B:391:THR:HG21	1:B:402:GLU:OE1	1.81	0.78
1:B:497:ARG:HH12	1:B:561:LEU:HD22	1.49	0.78
1:B:230:PHE:O	1:B:297:ARG:NH1	2.17	0.77
1:B:81:THR:HG23	1:B:84:ASN:H	1.48	0.77
1:A:216:VAL:CG1	1:A:217:GLY:N	2.48	0.77
1:A:357:ALA:HB1	1:A:474:THR:CG2	2.14	0.77
1:B:127:ARG:O	1:B:131:LEU:HD23	1.86	0.76
1:A:229:GLN:HE22	1:A:231:LEU:HB2	1.48	0.76
1:B:353:THR:HB	1:B:501:GLY:O	1.85	0.76

Continued on next page...

Continued from previous page...

Atom-1	Atom-2	Interatomic distance (Å)	Clash overlap (Å)
1:A:368:VAL:HG12	1:A:369:SER:H	1.48	0.76
1:A:41:ALA:CB	1:A:126:ILE:HD13	2.15	0.76
1:B:216:VAL:HG22	1:B:285:ALA:HB3	1.68	0.76
1:A:402:GLU:OE2	1:A:550:THR:HG21	1.85	0.76
1:B:216:VAL:HG12	1:B:217:GLY:N	1.99	0.75
1:B:563:PRO:O	1:B:564:ARG:HB2	1.86	0.75
1:A:517:ASP:OD2	1:A:540:PRO:O	2.04	0.75
1:B:497:ARG:NH2	1:B:561:LEU:O	2.21	0.74
1:B:550:THR:HG23	1:B:551:PRO:HD2	1.69	0.73
1:B:371:ARG:CB	1:B:371:ARG:NH1	2.51	0.73
1:B:497:ARG:HH21	1:B:563:PRO:HA	1.53	0.73
1:A:212:THR:HG23	1:A:214:GLN:H	1.54	0.72
1:B:229:GLN:HE22	1:B:231:LEU:HB2	1.54	0.72
1:A:422:GLN:HE22	1:A:448:ALA:H	1.34	0.72
1:B:101:LYS:HG3	1:B:102:TRP:H	1.54	0.72
1:A:562:ASN:CB	1:A:563:PRO:CD	2.38	0.72
1:B:109:GLN:O	1:B:111:CYS:SG	2.48	0.72
1:B:371:ARG:HH11	1:B:371:ARG:HB2	1.55	0.71
1:B:212:THR:CG2	1:B:214:GLN:H	1.99	0.70
1:B:371:ARG:NH1	1:B:371:ARG:HB2	2.05	0.70
1:A:157:TYR:CD2	1:A:173:LEU:HD23	2.25	0.70
1:A:391:THR:HG22	1:A:455:LEU:CA	2.20	0.70
1:A:527:LEU:HD22	1:B:406:TYR:OH	1.91	0.70
1:A:216:VAL:HG12	1:A:217:GLY:N	2.05	0.70
1:A:81:THR:HG23	1:A:83:GLU:H	1.55	0.70
1:A:198:LEU:HD23	1:A:199:GLY:H	1.57	0.70
1:B:497:ARG:NH1	1:B:561:LEU:CD2	2.56	0.69
1:A:562:ASN:HB3	1:A:563:PRO:HD2	1.72	0.69
1:B:212:THR:HG22	1:B:214:GLN:N	2.01	0.68
1:A:223:ASN:HD22	1:A:490:GLU:HG3	1.59	0.68
1:B:102:TRP:CH2	1:B:163:LEU:HD11	2.29	0.68
1:A:209:TYR:CE2	1:A:550:THR:HG23	2.29	0.68
1:B:402:GLU:OE2	1:B:550:THR:HG21	1.93	0.68
1:A:563:PRO:O	1:A:564:ARG:HG3	1.93	0.68
1:B:201:THR:HG23	1:B:202:PRO:HD2	1.76	0.68
1:B:115:ILE:HD13	1:B:313:ASN:OD1	1.93	0.67
1:A:132:LEU:HD13	1:A:133:LEU:HD21	1.75	0.67
1:B:107:GLY:O	1:B:108:ALA:C	2.32	0.67
1:B:100:GLN:O	1:B:101:LYS:CG	2.43	0.67
1:A:35:TRP:CZ3	1:A:143:GLY:HA2	2.31	0.66
1:A:81:THR:H	1:A:84:ASN:HD22	1.40	0.66

Continued on next page...

Continued from previous page...

Atom-1	Atom-2	Interatomic distance (Å)	Clash overlap (Å)
1:B:201:THR:HG22	1:B:203:SER:H	1.60	0.66
1:B:517:ASP:OD2	1:B:540:PRO:O	2.14	0.66
1:B:497:ARG:NH2	1:B:563:PRO:HA	2.10	0.66
1:B:209:TYR:HE2	1:B:550:THR:HG21	1.58	0.66
1:A:157:TYR:CD2	1:A:173:LEU:CD2	2.80	0.65
1:B:216:VAL:CG1	1:B:217:GLY:H	2.11	0.64
1:B:217:GLY:O	1:B:286:ASN:HB3	1.96	0.64
1:B:463:SER:O	1:B:466:VAL:HG12	1.97	0.64
1:A:359:GLY:H	1:A:474:THR:HG21	1.62	0.64
1:B:299:GLU:N	1:B:299:GLU:OE1	2.30	0.64
1:A:426:VAL:HG12	1:A:430:LEU:HD22	1.79	0.63
1:A:35:TRP:CE3	1:A:143:GLY:HA2	2.33	0.63
1:B:53:LEU:HD22	1:B:99:VAL:HG21	1.80	0.63
1:B:377:THR:HG22	1:B:380:ALA:HB3	1.81	0.62
1:B:449:TYR:HB2	1:B:450:PRO:HA	1.81	0.62
1:B:531:VAL:HG13	1:B:534:GLN:O	2.00	0.61
1:A:223:ASN:HD22	1:A:490:GLU:CG	2.13	0.61
1:B:497:ARG:HH21	1:B:563:PRO:CA	2.14	0.61
1:B:497:ARG:NH2	1:B:562:ASN:O	2.35	0.60
1:A:132:LEU:HD13	1:A:133:LEU:CD2	2.31	0.60
1:B:531:VAL:O	1:B:531:VAL:CG1	2.47	0.60
1:B:100:GLN:O	1:B:102:TRP:N	2.28	0.59
1:B:367:SER:HA	1:B:371:ARG:O	2.03	0.59
1:B:368:VAL:CG1	1:B:369:SER:N	2.43	0.59
1:A:563:PRO:O	4:A:580:CL:CL	2.57	0.59
1:B:57:ASN:HB2	1:B:88:LEU:HD22	1.84	0.58
1:A:132:LEU:C	1:A:133:LEU:HD23	2.24	0.58
1:A:563:PRO:O	1:A:564:ARG:CG	2.51	0.58
1:B:223:ASN:HD22	1:B:490:GLU:HG3	1.69	0.58
1:A:144:GLY:O	1:A:146:THR:N	2.37	0.58
1:B:216:VAL:HG13	1:B:217:GLY:H	1.67	0.58
1:A:216:VAL:CG1	1:A:217:GLY:H	2.15	0.57
1:A:298:HIS:H	1:A:298:HIS:CD2	2.21	0.57
1:B:197:HIS:HA	1:B:396:PRO:O	2.04	0.57
1:A:422:GLN:NE2	1:A:448:ALA:H	2.00	0.57
1:B:229:GLN:HE21	1:B:272:GLU:HG2	1.69	0.57
1:B:466:VAL:HG13	1:B:468:ILE:HD11	1.87	0.57
1:A:466:VAL:HG13	1:A:468:ILE:HD11	1.87	0.56
1:A:216:VAL:HG13	1:A:217:GLY:H	1.70	0.56
1:A:368:VAL:CG1	1:A:369:SER:H	2.12	0.56
1:B:489:ASN:O	1:B:493:ILE:HG23	2.06	0.56

Continued on next page...

Continued from previous page...

Atom-1	Atom-2	Interatomic distance (Å)	Clash overlap (Å)
1:A:308:LEU:HD21	1:A:340:VAL:HG13	1.86	0.56
1:B:218:SER:O	1:B:220:THR:N	2.39	0.56
1:B:101:LYS:CG	1:B:102:TRP:N	2.56	0.56
1:B:102:TRP:CD2	1:B:163:LEU:HD11	2.40	0.56
1:B:391:THR:HG22	1:B:455:LEU:CA	2.33	0.56
1:A:144:GLY:C	1:A:146:THR:N	2.57	0.56
1:B:320:VAL:HG22	1:B:353:THR:HG23	1.88	0.55
1:A:45:GLU:HB3	1:A:126:ILE:HD12	1.88	0.55
1:A:110:LYS:HA	1:A:110:LYS:CE	2.37	0.55
1:B:201:THR:HG22	1:B:203:SER:N	2.22	0.54
1:B:20:SER:OG	1:B:158:GLN:NE2	2.41	0.54
1:B:212:THR:CG2	1:B:213:SER:N	2.70	0.54
1:A:216:VAL:HG22	1:A:285:ALA:HB3	1.90	0.54
1:A:95:THR:CG2	1:A:166:HIS:ND1	2.50	0.54
1:A:110:LYS:HA	1:A:110:LYS:HE3	1.89	0.54
1:B:229:GLN:NE2	1:B:272:GLU:HG2	2.22	0.54
1:B:102:TRP:CD2	1:B:163:LEU:CD1	2.90	0.53
1:B:404:VAL:CG2	1:B:521:GLY:HA3	2.37	0.53
1:B:550:THR:HG23	1:B:551:PRO:CD	2.38	0.53
1:A:550:THR:HG23	1:A:551:PRO:HD2	1.90	0.53
1:B:41:ALA:HB3	1:B:126:ILE:HD13	1.90	0.53
1:A:145:PRO:HD2	1:A:179:THR:HG23	1.91	0.52
1:B:216:VAL:HG13	1:B:286:ASN:H	1.75	0.52
1:B:75:GLN:HA	1:B:75:GLN:HE21	1.74	0.52
1:B:216:VAL:HG22	1:B:285:ALA:CB	2.36	0.52
1:B:100:GLN:O	1:B:101:LYS:HG2	2.09	0.52
1:A:81:THR:HG23	1:A:83:GLU:N	2.24	0.52
1:A:160:PRO:HG2	1:A:163:LEU:HD23	1.92	0.52
1:A:40:ARG:CZ	1:A:137:GLU:HG3	2.40	0.52
1:A:201:THR:CG2	1:A:202:PRO:HD2	2.40	0.52
1:A:367:SER:HA	1:A:371:ARG:O	2.09	0.51
1:B:153:SER:O	1:B:174:HIS:HD2	1.92	0.51
1:A:20:SER:OG	1:A:158:GLN:CD	2.46	0.51
1:A:209:TYR:CE2	1:A:550:THR:CG2	2.93	0.51
1:A:146:THR:CB	1:A:232:GLU:OE2	2.59	0.51
1:A:383:PRO:HB3	1:A:419:PRO:HG3	1.93	0.51
1:A:81:THR:HG22	1:A:84:ASN:N	2.21	0.51
1:A:556:LEU:HD22	1:A:560:LEU:HD12	1.92	0.50
1:A:494:LEU:O	1:A:495:SER:CB	2.60	0.50
1:A:218:SER:O	1:A:220:THR:N	2.44	0.49
1:B:102:TRP:CZ3	1:B:163:LEU:CD1	2.82	0.49

Continued on next page...

Continued from previous page...

Atom-1	Atom-2	Interatomic distance (Å)	Clash overlap (Å)
1:A:81:THR:H	1:A:84:ASN:ND2	2.08	0.49
1:A:336:TYR:O	1:A:340:VAL:HG23	2.12	0.49
1:A:71:PRO:HG2	1:A:509:GLN:NE2	2.28	0.49
1:A:359:GLY:N	1:A:474:THR:HG21	2.26	0.49
1:A:295:PRO:O	1:A:303:PRO:HA	2.13	0.49
1:B:27:GLN:HB2	1:B:333:SER:HB3	1.95	0.49
1:B:397:PHE:C	1:B:398:LEU:HD22	2.33	0.49
1:A:402:GLU:O	1:A:403:ILE:HD12	2.12	0.49
1:B:153:SER:O	1:B:174:HIS:CD2	2.66	0.49
1:B:298:HIS:HB3	1:B:299:GLU:OE1	2.13	0.48
1:A:201:THR:HG23	1:A:202:PRO:HD2	1.95	0.48
1:A:278:GLN:HE22	1:A:462:VAL:H	1.59	0.48
1:A:27:GLN:HB2	1:A:333:SER:HB3	1.96	0.48
1:A:209:TYR:HE2	1:A:550:THR:CG2	2.27	0.48
1:A:514:GLY:HA2	1:A:555:ALA:HB1	1.96	0.48
1:A:146:THR:CB	1:A:232:GLU:CB	2.91	0.48
1:A:201:THR:HG22	1:A:202:PRO:N	2.29	0.48
1:B:408:SER:O	1:B:523:HIS:HD2	1.97	0.48
1:A:391:THR:HG23	1:A:455:LEU:HD23	1.96	0.48
1:B:81:THR:HG22	1:B:84:ASN:ND2	2.29	0.48
1:B:319:HIS:CD2	7:B:617:HOH:O	2.66	0.48
1:A:391:THR:CG2	1:A:455:LEU:HD23	2.44	0.47
1:B:398:LEU:HD22	1:B:398:LEU:N	2.28	0.47
1:B:516:PHE:N	1:B:550:THR:O	2.46	0.47
1:A:81:THR:CG2	1:A:84:ASN:H	2.23	0.47
1:A:528:ASP:C	1:A:528:ASP:OD1	2.52	0.47
1:B:100:GLN:C	1:B:102:TRP:H	2.17	0.47
1:B:54:ARG:NH1	1:B:168:ASP:OD1	2.48	0.47
1:A:356:PHE:CE2	1:A:385:VAL:HG21	2.50	0.47
1:B:47:LEU:HD22	1:B:49:LEU:HD13	1.96	0.47
1:B:447:ARG:NH1	1:B:448:ALA:O	2.44	0.47
1:B:497:ARG:NH2	1:B:563:PRO:CA	2.76	0.47
1:B:100:GLN:C	1:B:102:TRP:N	2.67	0.47
1:A:519:THR:O	1:A:519:THR:CG2	2.63	0.47
1:B:212:THR:HG23	1:B:213:SER:N	2.30	0.47
1:B:366:TRP:HB2	1:B:375:ARG:HB2	1.97	0.47
1:A:41:ALA:CB	1:A:126:ILE:CD1	2.86	0.47
1:A:221:SER:OG	1:A:222:ASN:N	2.48	0.46
1:A:378:PHE:CD1	1:A:379:PRO:HA	2.51	0.46
1:B:101:LYS:CG	1:B:102:TRP:H	2.27	0.46
1:A:201:THR:HG23	1:A:247:PHE:CD1	2.50	0.46

Continued on next page...

Continued from previous page...

Atom-1	Atom-2	Interatomic distance (Å)	Clash overlap (Å)
1:B:216:VAL:CG1	1:B:286:ASN:HB2	2.45	0.46
1:B:297:ARG:C	1:B:299:GLU:H	2.17	0.46
1:A:157:TYR:CE2	1:A:173:LEU:HD22	2.50	0.46
1:B:553:PHE:HB3	1:B:554:PRO:HD3	1.97	0.46
1:B:561:LEU:C	1:B:562:ASN:O	2.51	0.46
1:B:206:ARG:NH2	1:B:285:ALA:HB2	2.30	0.46
1:B:297:ARG:C	1:B:299:GLU:N	2.68	0.46
1:A:406:TYR:CZ	1:A:524:GLU:HB3	2.51	0.46
1:A:519:THR:O	1:A:519:THR:HG22	2.14	0.46
1:B:109:GLN:O	1:B:110:LYS:C	2.55	0.45
1:B:201:THR:HG23	1:B:202:PRO:CD	2.44	0.45
1:B:485:LEU:HD12	1:B:485:LEU:HA	1.85	0.45
1:A:368:VAL:CG1	1:A:369:SER:N	2.57	0.45
1:B:105:ALA:O	1:B:106:ALA:CB	2.50	0.45
1:A:398:LEU:N	1:A:398:LEU:HD22	2.31	0.45
1:B:271:ILE:HD12	1:B:471:VAL:CG2	2.47	0.45
1:B:301:GLN:O	1:B:303:PRO:HD3	2.16	0.45
1:A:68:VAL:HG13	1:A:79:TYR:CE1	2.52	0.45
1:B:562:ASN:O	1:B:563:PRO:C	2.54	0.45
1:A:145:PRO:CD	1:A:179:THR:HG23	2.47	0.45
1:A:357:ALA:CB	1:A:474:THR:HG23	2.33	0.45
1:A:556:LEU:HD22	1:A:560:LEU:CD1	2.47	0.45
1:B:102:TRP:CE2	1:B:132:LEU:HD21	2.52	0.45
1:B:377:THR:HB	7:B:629:HOH:O	2.15	0.45
1:A:553:PHE:HB3	1:A:554:PRO:HD3	1.99	0.45
1:A:408:SER:O	1:A:523:HIS:HD2	2.00	0.44
1:B:41:ALA:CB	1:B:126:ILE:HD13	2.47	0.44
1:A:153:SER:O	1:A:174:HIS:HD2	2.00	0.44
1:A:514:GLY:HA2	1:A:555:ALA:CB	2.47	0.44
1:A:41:ALA:HB3	1:A:126:ILE:HD13	1.96	0.44
1:A:523:HIS:HE1	1:A:536:PHE:H	1.64	0.44
1:A:449:TYR:CD1	1:A:449:TYR:C	2.90	0.44
1:A:454:ALA:HB3	1:A:477:SER:HB2	1.99	0.44
1:B:395:GLU:CD	1:B:398:LEU:HB2	2.38	0.44
1:B:419:PRO:HD2	1:B:422:GLN:NE2	2.33	0.44
1:A:60:ARG:HA	1:A:60:ARG:HD3	1.74	0.44
1:A:118:ASP:OD2	1:A:346:LYS:NZ	2.50	0.44
1:B:369:SER:HB2	1:B:370:GLY:H	1.66	0.44
1:B:278:GLN:HE22	1:B:462:VAL:H	1.65	0.44
1:B:157:TYR:CD2	1:B:173:LEU:HD22	2.53	0.43
1:B:164:ALA:N	1:B:165:PRO:CD	2.81	0.43

Continued on next page...

Continued from previous page...

Atom-1	Atom-2	Interatomic distance (Å)	Clash overlap (Å)
1:B:528:ASP:O	1:B:532:GLU:HA	2.18	0.43
1:B:75:GLN:HE21	1:B:75:GLN:CA	2.31	0.43
1:B:404:VAL:HG21	1:B:521:GLY:C	2.38	0.43
1:B:563:PRO:O	1:B:564:ARG:CB	2.56	0.43
1:A:26:ASP:OD2	1:A:26:ASP:N	2.50	0.43
1:B:20:SER:HB2	1:B:159:LEU:O	2.18	0.43
1:B:394:GLN:HE21	1:B:401:ASN:HB3	1.84	0.43
1:A:210:ASN:ND2	1:A:552:ASN:OD1	2.51	0.43
1:A:216:VAL:HG13	1:A:285:ALA:O	2.17	0.43
1:A:132:LEU:CD1	1:A:133:LEU:HD21	2.46	0.43
1:B:229:GLN:HG3	1:B:272:GLU:HG3	2.00	0.43
1:B:469:PRO:HB2	1:B:470:TRP:CD1	2.54	0.43
1:A:128:GLN:O	1:A:132:LEU:HB2	2.19	0.43
1:B:497:ARG:NH2	1:B:562:ASN:C	2.72	0.43
1:B:26:ASP:OD2	1:B:26:ASP:N	2.52	0.43
1:B:81:THR:HG22	1:B:84:ASN:CG	2.38	0.43
1:A:301:GLN:O	1:A:303:PRO:HD3	2.19	0.42
1:A:448:ALA:HB1	1:A:542:TRP:HH2	1.83	0.42
1:A:395:GLU:CD	1:A:398:LEU:HB2	2.40	0.42
1:B:68:VAL:HG13	1:B:79:TYR:CE1	2.55	0.42
1:B:429:PHE:HD2	1:B:430:LEU:HD13	1.84	0.42
1:A:21:TYR:O	1:A:158:GLN:CB	2.68	0.42
1:B:221:SER:OG	1:B:222:ASN:N	2.52	0.42
1:B:523:HIS:HE1	1:B:536:PHE:H	1.68	0.42
1:A:391:THR:HG22	1:A:455:LEU:N	2.34	0.41
1:B:42:ASP:O	1:B:43:PRO:C	2.58	0.41
1:B:561:LEU:O	1:B:562:ASN:C	2.55	0.41
1:A:298:HIS:CD2	1:A:298:HIS:N	2.85	0.41
1:B:198:LEU:HD11	1:B:397:PHE:O	2.21	0.41
1:A:515:LEU:HD23	1:A:551:PRO:HA	2.01	0.41
1:B:45:GLU:O	1:B:126:ILE:HG23	2.19	0.41
1:B:320:VAL:HG22	1:B:353:THR:CG2	2.50	0.41
1:B:403:ILE:HG13	1:B:520:ARG:HB3	2.03	0.41
1:A:21:TYR:O	1:A:158:GLN:HB2	2.20	0.41
1:A:164:ALA:N	1:A:165:PRO:CD	2.84	0.41
1:B:297:ARG:O	1:B:299:GLU:N	2.54	0.41
1:A:41:ALA:HA	1:A:140:HIS:CE1	2.56	0.41
1:A:144:GLY:O	1:A:146:THR:C	2.59	0.41
1:A:106:ALA:HB2	1:A:132:LEU:HD23	2.01	0.41
1:B:55:GLN:HB3	1:B:89:VAL:HG22	2.02	0.41
1:B:201:THR:CG2	1:B:202:PRO:N	2.84	0.41

Continued on next page...

Continued from previous page...

Atom-1	Atom-2	Interatomic distance (Å)	Clash overlap (Å)
1:B:408:SER:O	1:B:523:HIS:CD2	2.74	0.41
1:B:229:GLN:HE21	1:B:231:LEU:HG	1.86	0.41
1:A:463:SER:O	1:A:466:VAL:CG1	2.56	0.40
1:B:322:THR:HG21	1:B:479:PRO:HA	2.02	0.40
1:B:179:THR:O	1:B:180:SER:C	2.60	0.40
1:B:556:LEU:HD23	1:B:556:LEU:HA	1.94	0.40

There are no symmetry-related clashes.

5.3 Torsion angles [i](#)

5.3.1 Protein backbone [i](#)

In the following table, the Percentiles column shows the percent Ramachandran outliers of the chain as a percentile score with respect to all X-ray entries followed by that with respect to entries of similar resolution.

The Analysed column shows the number of residues for which the backbone conformation was analysed, and the total number of residues.

Mol	Chain	Analysed	Favoured	Allowed	Outliers	Percentiles	
1	A	525/571 (92%)	495 (94%)	21 (4%)	9 (2%)	7	6
1	B	525/571 (92%)	479 (91%)	40 (8%)	6 (1%)	12	11
All	All	1050/1142 (92%)	974 (93%)	61 (6%)	15 (1%)	9	7

All (15) Ramachandran outliers are listed below:

Mol	Chain	Res	Type
1	A	219	GLY
1	A	368	VAL
1	B	219	GLY
1	B	369	SER
1	A	406	TYR
1	A	450	PRO
1	A	563	PRO
1	B	379	PRO
1	A	369	SER
1	B	450	PRO
1	A	379	PRO
1	A	434	PRO

Continued on next page...

Continued from previous page...

Mol	Chain	Res	Type
1	B	145	PRO
1	A	143	GLY
1	B	469	PRO

5.3.2 Protein sidechains [i](#)

In the following table, the Percentiles column shows the percent sidechain outliers of the chain as a percentile score with respect to all X-ray entries followed by that with respect to entries of similar resolution.

The Analysed column shows the number of residues for which the sidechain conformation was analysed, and the total number of residues.

Mol	Chain	Analysed	Rotameric	Outliers	Percentiles	
1	A	443/479 (92%)	396 (89%)	47 (11%)	5	5
1	B	443/479 (92%)	391 (88%)	52 (12%)	4	4
All	All	886/958 (92%)	787 (89%)	99 (11%)	5	4

All (99) residues with a non-rotameric sidechain are listed below:

Mol	Chain	Res	Type
1	A	38	LEU
1	A	47	LEU
1	A	48	SER
1	A	49	LEU
1	A	54	ARG
1	A	60	ARG
1	A	64	LEU
1	A	68	VAL
1	A	75	GLN
1	A	78	LYS
1	A	81	THR
1	A	88	LEU
1	A	89	VAL
1	A	110	LYS
1	A	126	ILE
1	A	132	LEU
1	A	198	LEU
1	A	212	THR
1	A	220	THR
1	A	222	ASN

Continued on next page...

Continued from previous page...

Mol	Chain	Res	Type
1	A	232	GLU
1	A	235	PHE
1	A	246	LEU
1	A	264	GLN
1	A	272	GLU
1	A	310	LEU
1	A	311	LEU
1	A	324	SER
1	A	344	LEU
1	A	352	LEU
1	A	377	THR
1	A	385	VAL
1	A	391	THR
1	A	395	GLU
1	A	397	PHE
1	A	403	ILE
1	A	404	VAL
1	A	430	LEU
1	A	447	ARG
1	A	463	SER
1	A	474	THR
1	A	490	GLU
1	A	506	ARG
1	A	523	HIS
1	A	531	VAL
1	A	550	THR
1	A	557	LEU
1	B	40	ARG
1	B	47	LEU
1	B	49	LEU
1	B	54	ARG
1	B	60	ARG
1	B	64	LEU
1	B	68	VAL
1	B	75	GLN
1	B	88	LEU
1	B	89	VAL
1	B	112	HIS
1	B	115	ILE
1	B	127	ARG
1	B	131	LEU
1	B	146	THR

Continued on next page...

Continued from previous page...

Mol	Chain	Res	Type
1	B	163	LEU
1	B	173	LEU
1	B	201	THR
1	B	203	SER
1	B	207	LYS
1	B	212	THR
1	B	220	THR
1	B	222	ASN
1	B	235	PHE
1	B	264	GLN
1	B	272	GLU
1	B	276	ASP
1	B	308	LEU
1	B	311	LEU
1	B	324	SER
1	B	344	LEU
1	B	352	LEU
1	B	353	THR
1	B	367	SER
1	B	371	ARG
1	B	377	THR
1	B	385	VAL
1	B	391	THR
1	B	395	GLU
1	B	397	PHE
1	B	401	ASN
1	B	430	LEU
1	B	443	ASN
1	B	447	ARG
1	B	461	VAL
1	B	477	SER
1	B	485	LEU
1	B	497	ARG
1	B	509	GLN
1	B	523	HIS
1	B	550	THR
1	B	557	LEU

Sometimes sidechains can be flipped to improve hydrogen bonding and reduce clashes. All (35) such sidechains are listed below:

Mol	Chain	Res	Type
1	A	57	ASN

Continued on next page...

Continued from previous page...

Mol	Chain	Res	Type
1	A	75	GLN
1	A	84	ASN
1	A	158	GLN
1	A	161	GLN
1	A	174	HIS
1	A	223	ASN
1	A	225	GLN
1	A	229	GLN
1	A	278	GLN
1	A	298	HIS
1	A	321	HIS
1	A	394	GLN
1	A	422	GLN
1	A	504	ASN
1	A	509	GLN
1	A	523	HIS
1	B	56	GLN
1	B	57	ASN
1	B	75	GLN
1	B	100	GLN
1	B	158	GLN
1	B	174	HIS
1	B	223	ASN
1	B	225	GLN
1	B	229	GLN
1	B	254	GLN
1	B	264	GLN
1	B	278	GLN
1	B	394	GLN
1	B	422	GLN
1	B	504	ASN
1	B	509	GLN
1	B	523	HIS
1	B	552	ASN

5.3.3 RNA [i](#)

There are no RNA molecules in this entry.

5.4 Non-standard residues in protein, DNA, RNA chains [i](#)

There are no non-standard protein/DNA/RNA residues in this entry.

5.5 Carbohydrates [i](#)

There are no oligosaccharides in this entry.

5.6 Ligand geometry [i](#)

Of 22 ligands modelled in this entry, 12 are monoatomic - leaving 10 for Mogul analysis.

In the following table, the Counts columns list the number of bonds (or angles) for which Mogul statistics could be retrieved, the number of bonds (or angles) that are observed in the model and the number of bonds (or angles) that are defined in the Chemical Component Dictionary. The Link column lists molecule types, if any, to which the group is linked. The Z score for a bond length (or angle) is the number of standard deviations the observed value is removed from the expected value. A bond length (or angle) with $|Z| > 2$ is considered an outlier worth inspection. RMSZ is the root-mean-square of all Z scores of the bond lengths (or angles).

Mol	Type	Chain	Res	Link	Bond lengths			Bond angles		
					Counts	RMSZ	# Z > 2	Counts	RMSZ	# Z > 2
2	NAG	B	572	1	13,13,15	0.95	0	12,17,21	1.64	3 (25%)
2	NAG	A	575	1	13,13,15	0.75	0	12,17,21	1.05	0
2	NAG	B	573	1	13,13,15	0.98	0	12,17,21	1.34	3 (25%)
2	NAG	B	575	1	13,13,15	0.95	0	12,17,21	1.10	1 (8%)
2	NAG	B	574	1	13,13,15	1.19	2 (15%)	12,17,21	1.45	1 (8%)
2	NAG	A	574	1	13,13,15	0.88	0	12,17,21	1.38	1 (8%)
2	NAG	A	572	1	13,13,15	1.01	0	12,17,21	1.11	1 (8%)
6	SO4	A	582	-	4,4,4	0.26	0	6,6,6	0.20	0
6	SO4	B	582	-	4,4,4	0.26	0	6,6,6	0.19	0
2	NAG	A	573	1	13,13,15	1.57	2 (15%)	12,17,21	2.29	6 (50%)

In the following table, the Chirals column lists the number of chiral outliers, the number of chiral centers analysed, the number of these observed in the model and the number defined in the Chemical Component Dictionary. Similar counts are reported in the Torsion and Rings columns. '-' means no outliers of that kind were identified.

Mol	Type	Chain	Res	Link	Chirals	Torsions	Rings
2	NAG	B	572	1	-	2/6/19/26	1/1/1/1
2	NAG	A	575	1	-	4/6/19/26	0/1/1/1
2	NAG	B	573	1	-	5/6/19/26	0/1/1/1
2	NAG	B	575	1	-	5/6/19/26	0/1/1/1
2	NAG	B	574	1	-	2/6/19/26	0/1/1/1
2	NAG	A	574	1	-	3/6/19/26	0/1/1/1
2	NAG	A	572	1	-	4/6/19/26	1/1/1/1

Continued on next page...

Continued from previous page...

Mol	Type	Chain	Res	Link	Chirals	Torsions	Rings
2	NAG	A	573	1	-	5/6/19/26	0/1/1/1

All (4) bond length outliers are listed below:

Mol	Chain	Res	Type	Atoms	Z	Observed(Å)	Ideal(Å)
2	A	573	NAG	C3-C2	4.02	1.56	1.52
2	A	573	NAG	C4-C3	2.60	1.57	1.52
2	B	574	NAG	C4-C3	2.41	1.57	1.52
2	B	574	NAG	C3-C2	2.05	1.54	1.52

All (16) bond angle outliers are listed below:

Mol	Chain	Res	Type	Atoms	Z	Observed(°)	Ideal(°)
2	A	573	NAG	C3-C4-C5	-4.70	103.25	111.19
2	A	574	NAG	O5-C1-C2	-3.72	105.53	111.29
2	A	573	NAG	C2-N2-C7	3.65	127.79	122.90
2	B	574	NAG	O5-C1-C2	-3.51	105.87	111.29
2	B	572	NAG	O5-C1-C2	-3.08	106.52	111.29
2	B	572	NAG	C3-C4-C5	-2.84	106.38	111.19
2	A	573	NAG	O5-C5-C4	2.52	115.12	110.26
2	A	573	NAG	O7-C7-C8	-2.49	117.62	122.05
2	B	575	NAG	O5-C1-C2	-2.30	107.73	111.29
2	B	572	NAG	O3-C3-C2	-2.25	105.13	109.88
2	B	573	NAG	O5-C1-C2	-2.20	107.89	111.29
2	A	572	NAG	C4-C5-C6	2.18	116.53	112.50
2	A	573	NAG	O5-C1-C2	-2.12	108.02	111.29
2	A	573	NAG	O7-C7-N2	2.09	125.68	121.98
2	B	573	NAG	C3-C4-C5	-2.04	107.75	111.19
2	B	573	NAG	C4-C5-C6	2.01	116.22	112.50

There are no chirality outliers.

All (30) torsion outliers are listed below:

Mol	Chain	Res	Type	Atoms
2	A	572	NAG	C1-C2-N2-C7
2	A	572	NAG	C4-C5-C6-O6
2	A	572	NAG	C8-C7-N2-C2
2	A	572	NAG	O7-C7-N2-C2
2	A	573	NAG	C4-C5-C6-O6
2	A	573	NAG	O5-C5-C6-O6
2	A	574	NAG	C1-C2-N2-C7

Continued on next page...

Continued from previous page...

Mol	Chain	Res	Type	Atoms
2	B	573	NAG	C4-C5-C6-O6
2	B	573	NAG	O5-C5-C6-O6
2	B	574	NAG	C4-C5-C6-O6
2	B	574	NAG	O5-C5-C6-O6
2	B	575	NAG	C3-C2-N2-C7
2	B	575	NAG	C4-C5-C6-O6
2	B	575	NAG	O5-C5-C6-O6
2	B	575	NAG	C8-C7-N2-C2
2	B	575	NAG	O7-C7-N2-C2
2	A	573	NAG	C8-C7-N2-C2
2	A	573	NAG	O7-C7-N2-C2
2	A	575	NAG	O7-C7-N2-C2
2	A	575	NAG	C8-C7-N2-C2
2	B	572	NAG	C8-C7-N2-C2
2	A	574	NAG	C8-C7-N2-C2
2	A	574	NAG	O7-C7-N2-C2
2	B	572	NAG	O7-C7-N2-C2
2	B	573	NAG	C8-C7-N2-C2
2	A	575	NAG	O5-C5-C6-O6
2	B	573	NAG	O7-C7-N2-C2
2	A	575	NAG	C4-C5-C6-O6
2	A	573	NAG	C1-C2-N2-C7
2	B	573	NAG	C1-C2-N2-C7

All (2) ring outliers are listed below:

Mol	Chain	Res	Type	Atoms
2	B	572	NAG	C1-C2-C3-C4-C5-O5
2	A	572	NAG	C1-C2-C3-C4-C5-O5

No monomer is involved in short contacts.

5.7 Other polymers [i](#)

There are no such residues in this entry.

5.8 Polymer linkage issues [i](#)

There are no chain breaks in this entry.

6 Fit of model and data

6.1 Protein, DNA and RNA chains

In the following table, the column labelled ‘#RSRZ > 2’ contains the number (and percentage) of RSRZ outliers, followed by percent RSRZ outliers for the chain as percentile scores relative to all X-ray entries and entries of similar resolution. The OWAB column contains the minimum, median, 95th percentile and maximum values of the occupancy-weighted average B-factor per residue. The column labelled ‘Q < 0.9’ lists the number of (and percentage) of residues with an average occupancy less than 0.9.

Mol	Chain	Analysed	<RSRZ>	#RSRZ>2	OWAB(Å ²)	Q<0.9
1	A	529/571 (92%)	1.09	74 (13%) 7 9	49, 67, 79, 88	0
1	B	529/571 (92%)	1.00	58 (10%) 12 14	60, 67, 79, 91	0
All	All	1058/1142 (92%)	1.05	132 (12%) 9 11	49, 67, 79, 91	0

All (132) RSRZ outliers are listed below:

Mol	Chain	Res	Type	RSRZ
1	B	220	THR	7.0
1	A	198	LEU	6.9
1	A	399	ILE	6.5
1	B	395	GLU	5.5
1	A	300	GLY	5.3
1	A	220	THR	4.9
1	B	293	SER	4.7
1	A	219	GLY	4.4
1	B	219	GLY	4.4
1	B	514	GLY	4.3
1	A	295	PRO	4.2
1	A	563	PRO	4.2
1	B	513	ALA	4.0
1	A	47	LEU	4.0
1	B	564	ARG	3.9
1	B	285	ALA	3.8
1	B	406	TYR	3.8
1	A	298	HIS	3.7
1	A	297	ARG	3.7
1	A	393	PHE	3.6
1	B	295	PRO	3.3
1	A	293	SER	3.3
1	B	563	PRO	3.3
1	B	198	LEU	3.3

Continued on next page...

Continued from previous page...

Mol	Chain	Res	Type	RSRZ
1	B	531	VAL	3.2
1	A	237	ASP	3.2
1	A	95	THR	3.2
1	A	396	PRO	3.2
1	B	397	PHE	3.2
1	A	512	GLY	3.2
1	B	123	TRP	3.1
1	A	234	TYR	3.1
1	B	234	TYR	3.1
1	A	162	ALA	3.1
1	A	255	ALA	3.1
1	A	265	GLY	3.0
1	B	145	PRO	3.0
1	B	180	SER	3.0
1	A	140	HIS	2.9
1	B	469	PRO	2.9
1	A	296	GLY	2.9
1	A	264	GLN	2.9
1	A	398	LEU	2.9
1	A	397	PHE	2.8
1	A	163	LEU	2.8
1	B	271	ILE	2.8
1	B	149	HIS	2.8
1	B	544	PRO	2.8
1	A	232	GLU	2.8
1	A	197	HIS	2.7
1	B	294	SER	2.7
1	A	143	GLY	2.7
1	A	102	TRP	2.7
1	B	102	TRP	2.7
1	A	537	CYS	2.7
1	B	310	LEU	2.6
1	A	406	TYR	2.6
1	A	294	SER	2.6
1	A	400	THR	2.6
1	B	276	ASP	2.6
1	A	99	VAL	2.5
1	A	536	PHE	2.5
1	B	400	THR	2.5
1	A	319	HIS	2.5
1	A	545	VAL	2.5
1	A	434	PRO	2.5

Continued on next page...

Continued from previous page...

Mol	Chain	Res	Type	RSRZ
1	A	211	LEU	2.5
1	A	233	GLN	2.5
1	A	180	SER	2.4
1	B	111	CYS	2.4
1	B	261	VAL	2.4
1	B	232	GLU	2.4
1	A	250	ASN	2.4
1	B	260	VAL	2.4
1	B	480	VAL	2.4
1	A	551	PRO	2.4
1	B	218	SER	2.4
1	B	21	TYR	2.4
1	B	39	GLY	2.4
1	B	519	THR	2.3
1	A	41	ALA	2.3
1	B	148	THR	2.3
1	B	298	HIS	2.3
1	A	124	LEU	2.3
1	B	487	LEU	2.3
1	A	59	GLU	2.3
1	A	136	ALA	2.3
1	B	147	GLU	2.3
1	A	218	SER	2.3
1	A	235	PHE	2.3
1	A	564	ARG	2.3
1	A	151	VAL	2.2
1	B	297	ARG	2.2
1	B	300	GLY	2.2
1	A	487	LEU	2.2
1	A	60	ARG	2.2
1	A	540	PRO	2.2
1	A	144	GLY	2.2
1	A	310	LEU	2.2
1	B	140	HIS	2.2
1	A	36	VAL	2.2
1	A	83	GLU	2.2
1	B	197	HIS	2.2
1	A	269	ALA	2.2
1	A	142	VAL	2.2
1	B	126	ILE	2.1
1	A	210	ASN	2.1
1	B	396	PRO	2.1

Continued on next page...

Continued from previous page...

Mol	Chain	Res	Type	RSRZ
1	A	441	TYR	2.1
1	B	385	VAL	2.1
1	B	404	VAL	2.1
1	A	39	GLY	2.1
1	A	199	GLY	2.1
1	A	421	TYR	2.1
1	A	374	PHE	2.1
1	B	235	PHE	2.1
1	A	521	GLY	2.1
1	B	173	LEU	2.1
1	B	231	LEU	2.1
1	A	251	PHE	2.1
1	B	221	SER	2.1
1	A	122	CYS	2.1
1	A	254	GLN	2.1
1	B	527	LEU	2.1
1	A	123	TRP	2.1
1	B	105	ALA	2.1
1	B	112	HIS	2.0
1	B	233	GLN	2.0
1	A	53	LEU	2.0
1	B	387	THR	2.0
1	A	496	GLY	2.0
1	B	131	LEU	2.0

6.2 Non-standard residues in protein, DNA, RNA chains [i](#)

There are no non-standard protein/DNA/RNA residues in this entry.

6.3 Carbohydrates [i](#)

There are no monosaccharides in this entry.

6.4 Ligands [i](#)

In the following table, the Atoms column lists the number of modelled atoms in the group and the number defined in the chemical component dictionary. The B-factors column lists the minimum, median, 95th percentile and maximum values of B factors of atoms in the group. The column labelled 'Q< 0.9' lists the number of atoms with occupancy less than 0.9.

Mol	Type	Chain	Res	Atoms	RSCC	RSR	B-factors(\AA^2)	Q<0.9
2	NAG	A	575	13/15	0.37	0.24	87,88,90,91	0
6	SO4	A	582	5/5	0.39	0.18	112,112,112,112	0
2	NAG	B	575	13/15	0.45	0.22	88,90,93,93	0
2	NAG	A	572	13/15	0.50	0.22	82,85,89,90	0
2	NAG	B	574	13/15	0.59	0.17	81,83,85,85	0
2	NAG	A	573	13/15	0.65	0.18	68,72,79,80	0
6	SO4	B	582	5/5	0.67	0.14	104,104,105,105	0
2	NAG	A	574	13/15	0.73	0.16	80,81,84,85	0
2	NAG	B	573	13/15	0.74	0.17	69,74,79,80	0
2	NAG	B	572	13/15	0.80	0.17	72,73,77,78	0
4	CL	B	580	1/1	0.81	0.29	112,112,112,112	0
3	ZN	B	579	1/1	0.86	0.16	116,116,116,116	0
4	CL	A	580	1/1	0.90	0.40	98,98,98,98	0
3	ZN	A	579	1/1	0.91	0.11	114,114,114,114	0
3	ZN	B	577	1/1	0.96	0.10	94,94,94,94	0
3	ZN	B	576	1/1	0.96	0.11	87,87,87,87	1
3	ZN	A	577	1/1	0.97	0.08	71,71,71,71	1
3	ZN	A	578	1/1	0.97	0.17	83,83,83,83	0
3	ZN	B	578	1/1	0.97	0.10	90,90,90,90	0
3	ZN	A	576	1/1	0.97	0.11	91,91,91,91	0
5	CA	B	581	1/1	0.98	0.14	61,61,61,61	0
5	CA	A	581	1/1	0.99	0.13	66,66,66,66	0

6.5 Other polymers [i](#)

There are no such residues in this entry.