



Full wwPDB X-ray Structure Validation Report ⓘ

Jun 12, 2024 – 08:27 PM EDT

PDB ID : 3EBF
Title : Structure of inhibited murine iNOS oxygenase domain
Authors : Garcin, E.D.; Arvai, A.S.; Rosenfeld, R.J.; Kroeger, M.D.; Crane, B.R.; Anderson, G.; Andrews, G.; Hamley, P.J.; Mallinder, P.R.; Nicholls, D.J.; St-Gallay, S.A.; Tinker, A.C.; Gensmantel, N.P.; Mete, A.; Cheshire, D.R.; Connolly, S.; Stuehr, D.J.; Aberg, A.; Wallace, A.V.; Tainer, J.A.; Getzoff, E.D.
Deposited on : 2008-08-27
Resolution : 2.29 Å(reported)

This is a Full wwPDB X-ray Structure Validation Report for a publicly released PDB entry.

We welcome your comments at validation@mail.wwpdb.org

A user guide is available at

<https://www.wwpdb.org/validation/2017/XrayValidationReportHelp>

with specific help available everywhere you see the ⓘ symbol.

The types of validation reports are described at

<http://www.wwpdb.org/validation/2017/FAQs#types>.

The following versions of software and data (see [references](#) ①) were used in the production of this report:

MolProbity : 4.02b-467
Mogul : 2022.3.0, CSD as543be (2022)
Xtrriage (Phenix) : 1.20.1
EDS : 2.36.2
buster-report : 1.1.7 (2018)
Percentile statistics : 20191225.v01 (using entries in the PDB archive December 25th 2019)
Refmac : 5.8.0158
CCP4 : 7.0.044 (Gargrove)
Ideal geometry (proteins) : Engh & Huber (2001)
Ideal geometry (DNA, RNA) : Parkinson et al. (1996)
Validation Pipeline (wwPDB-VP) : 2.36.2

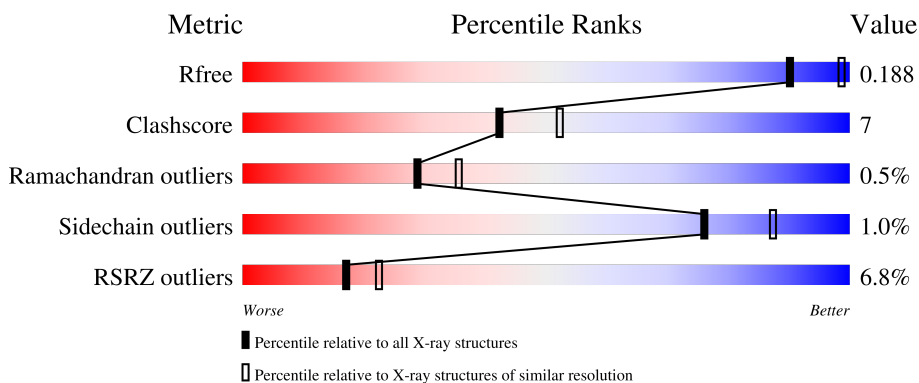
1 Overall quality at a glance

The following experimental techniques were used to determine the structure:

X-RAY DIFFRACTION

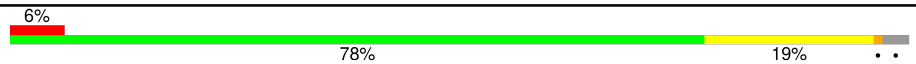

The reported resolution of this entry is 2.29 Å.

Percentile scores (ranging between 0-100) for global validation metrics of the entry are shown in the following graphic. The table shows the number of entries on which the scores are based.



Metric	Whole archive (#Entries)	Similar resolution (#Entries, resolution range(Å))
R_{free}	130704	5042 (2.30-2.30)
Clashscore	141614	5643 (2.30-2.30)
Ramachandran outliers	138981	5575 (2.30-2.30)
Sidechain outliers	138945	5575 (2.30-2.30)
RSRZ outliers	127900	4938 (2.30-2.30)

The table below summarises the geometric issues observed across the polymeric chains and their fit to the electron density. The red, orange, yellow and green segments of the lower bar indicate the fraction of residues that contain outliers for ≥ 3 , 2, 1 and 0 types of geometric quality criteria respectively. A grey segment represents the fraction of residues that are not modelled. The numeric value for each fraction is indicated below the corresponding segment, with a dot representing fractions $\leq 5\%$. The upper red bar (where present) indicates the fraction of residues that have poor fit to the electron density. The numeric value is given above the bar.

Mol	Chain	Length	Quality of chain
1	A	433	
1	B	433	

The following table lists non-polymeric compounds, carbohydrate monomers and non-standard residues in protein, DNA, RNA chains that are outliers for geometric or electron-density-fit criteria:

Mol	Type	Chain	Res	Chirality	Geometry	Clashes	Electron density
3	H4B	A	902	X	-	-	-
3	H4B	B	2902	X	-	-	-

2 Entry composition [i](#)

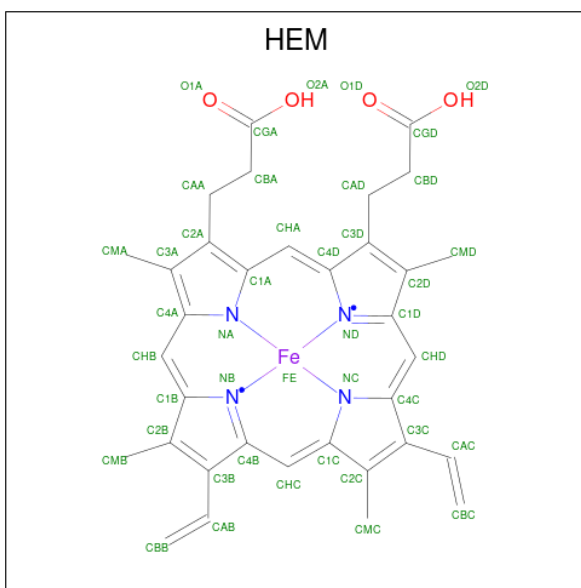
There are 6 unique types of molecules in this entry. The entry contains 7887 atoms, of which 0 are hydrogens and 0 are deuteriums.

In the tables below, the ZeroOcc column contains the number of atoms modelled with zero occupancy, the AltConf column contains the number of residues with at least one atom in alternate conformation and the Trace column contains the number of residues modelled with at most 2 atoms.

- Molecule 1 is a protein called Nitric oxide synthase, inducible.

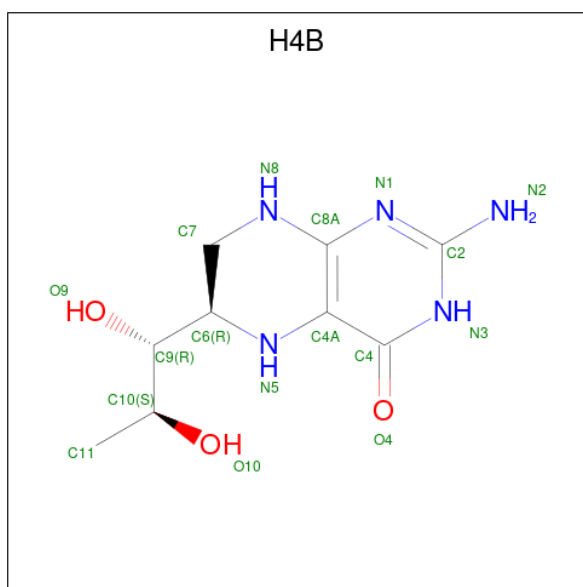
Mol	Chain	Residues	Atoms					ZeroOcc	AltConf	Trace
			Total	C	N	O	S			
1	A	421	Total 3425	C 2195	N 590	O 619	S 21	0	0	0
1	B	421	Total 3421	C 2193	N 589	O 618	S 21	0	0	0

- Molecule 2 is PROTOPORPHYRIN IX CONTAINING FE (three-letter code: HEM) (formula: $C_{34}H_{32}FeN_4O_4$).



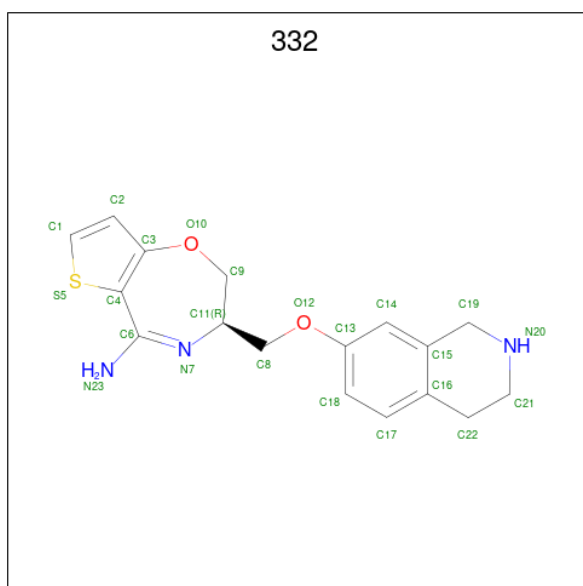
Mol	Chain	Residues	Atoms				ZeroOcc	AltConf	
			Total	C	Fe	N			O
2	A	1	Total 43	C 34	Fe 1	N 4	O 4	0	0
2	B	1	Total 43	C 34	Fe 1	N 4	O 4	0	0

- Molecule 3 is 5,6,7,8-TETRAHYDROBIOPTERIN (three-letter code: H4B) (formula: $C_9H_{15}N_5O_3$).



Mol	Chain	Residues	Atoms				ZeroOcc	AltConf
			Total	C	N	O		
3	A	1	17	9	5	3	0	0
3	B	1	17	9	5	3	0	0

- Molecule 4 is (3R)-3-[(1,2,3,4-tetrahydroisoquinolin-7-yloxy)methyl]-2,3-dihydrothieno[2,3-f][1,4]oxazepin-5-amine (three-letter code: 332) (formula: C₁₇H₁₉N₃O₂S).



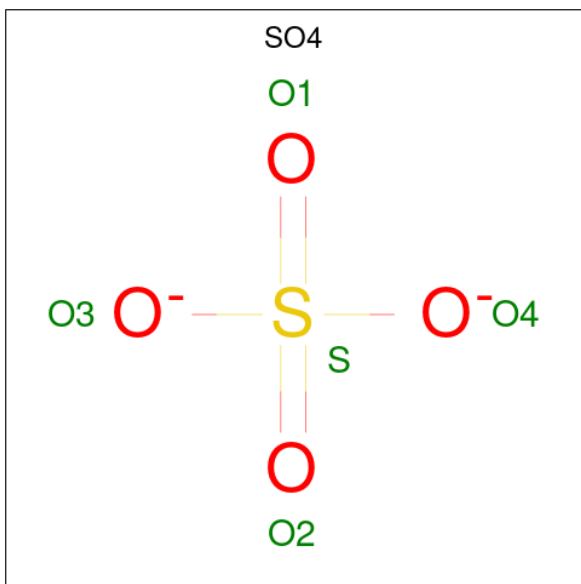
Mol	Chain	Residues	Atoms					ZeroOcc	AltConf
			Total	C	N	O	S		
4	A	1	23	17	3	2	1	0	0

Continued on next page...

Continued from previous page...

Mol	Chain	Residues	Atoms					ZeroOcc	AltConf
			Total	C	N	O	S		
4	B	1	23	17	3	2	1	0	0

- Molecule 5 is SULFATE ION (three-letter code: SO4) (formula: O₄S).



Mol	Chain	Residues	Atoms			ZeroOcc	AltConf
			Total	O	S		
5	A	1	5	4	1	0	0
5	A	1	5	4	1	0	0
5	B	1	5	4	1	0	0
5	B	1	5	4	1	0	0

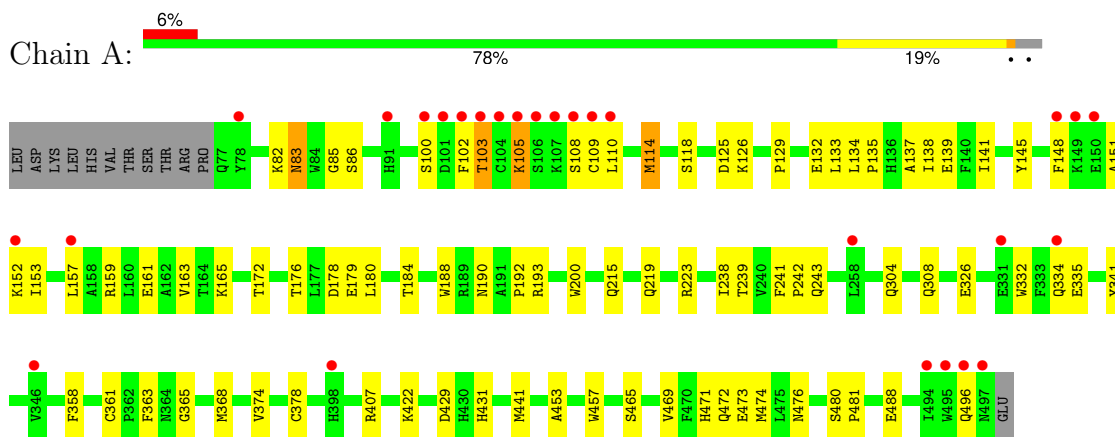
- Molecule 6 is water.

Mol	Chain	Residues	Atoms		ZeroOcc	AltConf
			Total	O		
6	A	398	398	398	0	0
6	B	457	457	457	0	0

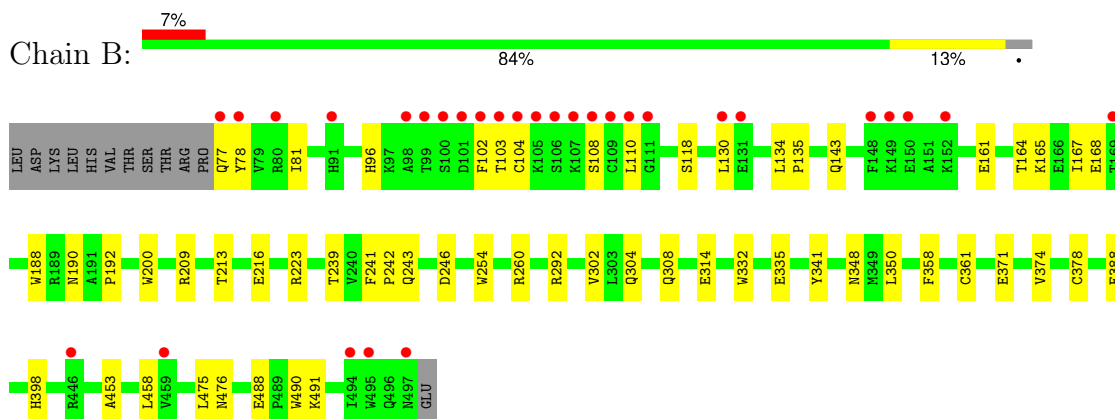
3 Residue-property plots [i](#)

These plots are drawn for all protein, RNA, DNA and oligosaccharide chains in the entry. The first graphic for a chain summarises the proportions of the various outlier classes displayed in the second graphic. The second graphic shows the sequence view annotated by issues in geometry and electron density. Residues are color-coded according to the number of geometric quality criteria for which they contain at least one outlier: green = 0, yellow = 1, orange = 2 and red = 3 or more. A red dot above a residue indicates a poor fit to the electron density ($RSRZ > 2$). Stretches of 2 or more consecutive residues without any outlier are shown as a green connector. Residues present in the sample, but not in the model, are shown in grey.

- Molecule 1: Nitric oxide synthase, inducible



- Molecule 1: Nitric oxide synthase, inducible



4 Data and refinement statistics

Property	Value	Source
Space group	P 61 2 2	Depositor
Cell constants a, b, c, α , β , γ	212.94Å 212.94Å 116.58Å 90.00° 90.00° 120.00°	Depositor
Resolution (Å)	31.39 – 2.29 31.39 – 2.29	Depositor EDS
% Data completeness (in resolution range)	93.0 (31.39-2.29) 93.2 (31.39-2.29)	Depositor EDS
R_{merge}	(Not available)	Depositor
R_{sym}	(Not available)	Depositor
$\langle I/\sigma(I) \rangle$ ¹	2.53 (at 2.29Å)	Xtrriage
Refinement program	CNS 1.2	Depositor
R, R_{free}	0.203 , 0.242 0.194 , 0.188	Depositor DCC
R_{free} test set	3291 reflections (5.04%)	wwPDB-VP
Wilson B-factor (Å ²)	32.3	Xtrriage
Anisotropy	0.335	Xtrriage
Bulk solvent k_{sol} (e/Å ³), B_{sol} (Å ²)	0.35 , 62.2	EDS
L-test for twinning ²	$\langle L \rangle = 0.50$, $\langle L^2 \rangle = 0.34$	Xtrriage
Estimated twinning fraction	No twinning to report.	Xtrriage
F_o, F_c correlation	0.95	EDS
Total number of atoms	7887	wwPDB-VP
Average B, all atoms (Å ²)	34.0	wwPDB-VP

Xtrriage's analysis on translational NCS is as follows: *The largest off-origin peak in the Patterson function is 2.63% of the height of the origin peak. No significant pseudotranslation is detected.*

¹Intensities estimated from amplitudes.

²Theoretical values of $\langle |L| \rangle$, $\langle L^2 \rangle$ for acentric reflections are 0.5, 0.333 respectively for untwinned datasets, and 0.375, 0.2 for perfectly twinned datasets.

5 Model quality [i](#)

5.1 Standard geometry [i](#)

Bond lengths and bond angles in the following residue types are not validated in this section: HEM, 332, H4B, SO4

The Z score for a bond length (or angle) is the number of standard deviations the observed value is removed from the expected value. A bond length (or angle) with $|Z| > 5$ is considered an outlier worth inspection. RMSZ is the root-mean-square of all Z scores of the bond lengths (or angles).

Mol	Chain	Bond lengths		Bond angles	
		RMSZ	# Z >5	RMSZ	# Z >5
1	A	0.31	0/3525	0.58	2/4792 (0.0%)
1	B	0.32	0/3521	0.59	0/4787
All	All	0.32	0/7046	0.59	2/9579 (0.0%)

There are no bond length outliers.

All (2) bond angle outliers are listed below:

Mol	Chain	Res	Type	Atoms	Z	Observed(°)	Ideal(°)
1	A	365	GLY	N-CA-C	-5.71	98.81	113.10
1	A	368	MET	N-CA-C	-5.20	96.96	111.00

There are no chirality outliers.

There are no planarity outliers.

5.2 Too-close contacts [i](#)

In the following table, the Non-H and H(model) columns list the number of non-hydrogen atoms and hydrogen atoms in the chain respectively. The H(added) column lists the number of hydrogen atoms added and optimized by MolProbity. The Clashes column lists the number of clashes within the asymmetric unit, whereas Symm-Clashes lists symmetry-related clashes.

Mol	Chain	Non-H	H(model)	H(added)	Clashes	Symm-Clashes
1	A	3425	0	3318	55	0
1	B	3421	0	3312	38	0
2	A	43	0	30	0	0
2	B	43	0	30	2	0
3	A	17	0	14	0	0
3	B	17	0	14	0	0
4	A	23	0	19	1	0

Continued on next page...

Continued from previous page...

Mol	Chain	Non-H	H(model)	H(added)	Clashes	Symm-Clashes
4	B	23	0	19	4	0
5	A	10	0	0	0	0
5	B	10	0	0	0	0
6	A	398	0	0	3	0
6	B	457	0	0	6	0
All	All	7887	0	6756	95	0

The all-atom clashscore is defined as the number of clashes found per 1000 atoms (including hydrogen atoms). The all-atom clashscore for this structure is 7.

All (95) close contacts within the same asymmetric unit are listed below, sorted by their clash magnitude.

Atom-1	Atom-2	Interatomic distance (Å)	Clash overlap (Å)
1:B:81:ILE:HD11	1:B:475:LEU:HD13	1.42	0.97
1:A:441:MET:HE1	1:A:472:GLN:HG2	1.52	0.90
1:A:103:THR:HG22	1:A:110:LEU:HB2	1.63	0.80
1:A:125:ASP:OD1	1:A:126:LYS:HG3	1.94	0.67
1:A:83:ASN:HD22	1:A:86:SER:H	1.42	0.67
1:B:388:GLU:HG2	6:B:4814:HOH:O	1.96	0.66
1:A:215:GLN:O	1:A:219:GLN:HG3	1.96	0.65
1:B:190:ASN:O	1:B:192:PRO:HD3	1.97	0.64
1:A:441:MET:CE	1:A:472:GLN:HG2	2.26	0.64
1:A:83:ASN:ND2	1:A:85:GLY:H	1.98	0.62
1:B:77:GLN:O	1:B:96:HIS:HE1	1.85	0.60
1:A:134:LEU:HB3	1:A:135:PRO:HD3	1.84	0.59
1:A:129:PRO:HB2	1:A:132:GLU:HG3	1.85	0.58
1:A:103:THR:CG2	1:A:110:LEU:HB2	2.32	0.58
1:B:164:THR:O	1:B:168:GLU:HG3	2.04	0.57
1:B:188:TRP:CE3	1:B:200:TRP:HA	2.39	0.57
1:B:81:ILE:HD11	1:B:475:LEU:CD1	2.27	0.57
1:B:134:LEU:HB3	1:B:135:PRO:HD3	1.85	0.57
1:B:104:CYS:HA	1:B:110:LEU:HD12	1.88	0.56
1:A:465:SER:O	1:A:471:HIS:HE1	1.89	0.55
1:A:161:GLU:O	1:A:165:LYS:HD3	2.07	0.55
1:A:176:THR:OG1	1:A:179:GLU:HG3	2.06	0.55
1:A:103:THR:H	1:A:118:SER:HB3	1.73	0.54
1:B:488:GLU:OE2	1:B:491:LYS:HE3	2.07	0.54
1:A:239:THR:O	1:A:361:CYS:HA	2.08	0.54
1:A:145:TYR:HA	1:A:148:PHE:CE2	2.43	0.53
1:A:153:ILE:O	1:A:157:LEU:HD23	2.08	0.53
1:B:110:LEU:HD22	6:B:4647:HOH:O	2.09	0.53

Continued on next page...

Continued from previous page...

Atom-1	Atom-2	Interatomic distance (Å)	Clash overlap (Å)
1:A:105:LYS:HD2	1:A:108:SER:OG	2.08	0.53
1:B:332:TRP:O	1:B:335:GLU:HB2	2.08	0.53
1:A:188:TRP:CE3	1:A:200:TRP:HA	2.44	0.52
1:A:152:LYS:HB2	1:A:152:LYS:NZ	2.24	0.52
1:A:332:TRP:O	1:A:335:GLU:HB2	2.10	0.52
1:A:407:ARG:HD2	6:A:4139:HOH:O	2.10	0.51
1:B:453:ALA:HB1	1:B:458:LEU:CD1	2.41	0.51
1:B:243:GLN:HB3	1:B:358:PHE:CE2	2.46	0.50
1:A:135:PRO:O	1:A:139:GLU:HG3	2.11	0.50
1:A:114:MET:HE1	6:A:4338:HOH:O	2.12	0.49
1:A:82:LYS:O	1:A:473:GLU:HG3	2.13	0.48
1:A:304:GLN:HG3	1:A:308:GLN:O	2.14	0.48
1:A:190:ASN:O	1:A:192:PRO:HD3	2.14	0.48
1:A:134:LEU:O	1:A:138:ILE:HG12	2.15	0.47
1:A:469:VAL:HG13	1:A:474:MET:CE	2.45	0.47
1:B:254:TRP:HB2	1:B:302:VAL:HB	1.96	0.47
1:A:308:GLN:HG2	1:A:496:GLN:HE22	1.78	0.47
1:B:304:GLN:HG3	1:B:308:GLN:O	2.15	0.47
1:A:83:ASN:ND2	1:A:86:SER:H	2.09	0.47
1:B:143:GLN:HG2	6:B:4660:HOH:O	2.15	0.47
1:A:103:THR:H	1:A:118:SER:CB	2.28	0.46
1:A:132:GLU:O	1:A:135:PRO:HD2	2.16	0.46
1:B:292:ARG:NH1	1:B:314:GLU:OE2	2.48	0.46
1:B:130:LEU:CD2	1:B:167:ILE:HG22	2.46	0.46
1:A:241:PHE:HB3	1:A:242:PRO:CD	2.45	0.46
1:A:469:VAL:HG13	1:A:474:MET:HE3	1.98	0.46
1:A:152:LYS:HB2	1:A:152:LYS:HZ2	1.81	0.46
1:A:109:CYS:C	1:A:110:LEU:HD23	2.37	0.45
1:B:102:PHE:HZ	1:B:476:ASN:ND2	2.15	0.45
1:A:238:ILE:HG13	1:A:363:PHE:HB3	1.97	0.45
1:A:326:GLU:OE1	1:A:422:LYS:NZ	2.42	0.45
1:B:341:TYR:OH	4:B:2903:332:H17	2.17	0.45
1:B:241:PHE:HB3	1:B:242:PRO:CD	2.46	0.45
1:B:371:GLU:OE1	4:B:2903:332:N7	2.49	0.45
1:B:239:THR:O	1:B:361:CYS:HA	2.17	0.45
1:B:374:VAL:O	1:B:378:CYS:HB2	2.18	0.44
2:B:2901:HEM:HBC2	2:B:2901:HEM:HMC1	1.99	0.44
1:B:213:THR:OG1	1:B:216:GLU:HG3	2.18	0.44
1:B:161:GLU:HG2	1:B:165:LYS:HE3	2.00	0.44
1:B:246:ASP:HB3	6:B:4855:HOH:O	2.18	0.44
1:A:180:LEU:O	1:A:184:THR:HG23	2.18	0.43

Continued on next page...

Continued from previous page...

Atom-1	Atom-2	Interatomic distance (Å)	Clash overlap (Å)
1:B:103:THR:OG1	1:B:104:CYS:N	2.51	0.43
1:B:78:TYR:C	1:B:78:TYR:CD1	2.92	0.43
1:A:137:ALA:O	1:A:141:ILE:HG12	2.19	0.42
1:A:374:VAL:O	1:A:378:CYS:HB2	2.19	0.42
1:A:429:ASP:OD1	1:A:431:HIS:HB2	2.19	0.42
1:A:488:GLU:HG2	6:A:4254:HOH:O	2.19	0.42
1:A:165:LYS:N	1:A:165:LYS:HD2	2.34	0.42
1:A:341:TYR:OH	4:A:903:332:H17	2.20	0.42
1:A:193:ARG:HD3	1:A:457:TRP:CD2	2.54	0.42
1:B:241:PHE:HB3	1:B:242:PRO:HD2	2.01	0.42
1:A:133:LEU:HD21	1:A:172:THR:HA	2.02	0.41
1:A:145:TYR:HA	1:A:148:PHE:CD2	2.54	0.41
1:B:209:ARG:O	1:B:242:PRO:HG3	2.20	0.41
1:B:103:THR:HG22	1:B:118:SER:OG	2.20	0.41
1:A:241:PHE:HB3	1:A:242:PRO:HD2	2.03	0.41
1:A:453:ALA:HB3	1:A:474:MET:HB3	2.01	0.41
1:A:243:GLN:HB3	1:A:358:PHE:CE2	2.56	0.41
1:B:488:GLU:HB3	1:B:490:TRP:CE2	2.56	0.41
1:B:350:LEU:C	1:B:350:LEU:HD23	2.42	0.41
1:A:102:PHE:HZ	1:A:476:ASN:ND2	2.19	0.40
1:A:159:ARG:O	1:A:163:VAL:HG23	2.21	0.40
1:A:480:SER:HA	1:A:481:PRO:C	2.42	0.40
1:B:260:ARG:CZ	4:B:2903:332:H22A	2.51	0.40
1:B:398:HIS:HB2	6:B:4594:HOH:O	2.20	0.40
2:B:2901:HEM:HBA2	4:B:2903:332:H9A	2.02	0.40
1:B:108:SER:HB2	6:B:4582:HOH:O	2.21	0.40

There are no symmetry-related clashes.

5.3 Torsion angles [\(i\)](#)

5.3.1 Protein backbone [\(i\)](#)

In the following table, the Percentiles column shows the percent Ramachandran outliers of the chain as a percentile score with respect to all X-ray entries followed by that with respect to entries of similar resolution.

The Analysed column shows the number of residues for which the backbone conformation was analysed, and the total number of residues.

Mol	Chain	Analysed	Favoured	Allowed	Outliers	Percentiles	
1	A	419/433 (97%)	394 (94%)	21 (5%)	4 (1%)	15	17
1	B	419/433 (97%)	392 (94%)	27 (6%)	0	100	100
All	All	838/866 (97%)	786 (94%)	48 (6%)	4 (0%)	29	35

All (4) Ramachandran outliers are listed below:

Mol	Chain	Res	Type
1	A	100	SER
1	A	103	THR
1	A	151	ALA
1	A	105	LYS

5.3.2 Protein sidechains [i](#)

In the following table, the Percentiles column shows the percent sidechain outliers of the chain as a percentile score with respect to all X-ray entries followed by that with respect to entries of similar resolution.

The Analysed column shows the number of residues for which the sidechain conformation was analysed, and the total number of residues.

Mol	Chain	Analysed	Rotameric	Outliers	Percentiles	
1	A	367/381 (96%)	362 (99%)	5 (1%)	67	81
1	B	366/381 (96%)	364 (100%)	2 (0%)	88	95
All	All	733/762 (96%)	726 (99%)	7 (1%)	76	87

All (7) residues with a non-rotameric sidechain are listed below:

Mol	Chain	Res	Type
1	A	83	ASN
1	A	114	MET
1	A	178	ASP
1	A	223	ARG
1	A	334	GLN
1	B	223	ARG
1	B	348	ASN

Sometimes sidechains can be flipped to improve hydrogen bonding and reduce clashes. All (17) such sidechains are listed below:

Mol	Chain	Res	Type
1	A	83	ASN
1	A	96	HIS
1	A	142	ASN
1	A	202	ASN
1	A	219	GLN
1	A	249	HIS
1	A	334	GLN
1	A	421	GLN
1	A	442	GLN
1	A	471	HIS
1	A	496	GLN
1	B	96	HIS
1	B	143	GLN
1	B	215	GLN
1	B	334	GLN
1	B	348	ASN
1	B	421	GLN

5.3.3 RNA [i](#)

There are no RNA molecules in this entry.

5.4 Non-standard residues in protein, DNA, RNA chains [i](#)

There are no non-standard protein/DNA/RNA residues in this entry.

5.5 Carbohydrates [i](#)

There are no monosaccharides in this entry.

5.6 Ligand geometry [i](#)

10 ligands are modelled in this entry.

In the following table, the Counts columns list the number of bonds (or angles) for which Mogul statistics could be retrieved, the number of bonds (or angles) that are observed in the model and the number of bonds (or angles) that are defined in the Chemical Component Dictionary. The Link column lists molecule types, if any, to which the group is linked. The Z score for a bond length (or angle) is the number of standard deviations the observed value is removed from the expected value. A bond length (or angle) with $|Z| > 2$ is considered an outlier worth inspection. RMSZ is the root-mean-square of all Z scores of the bond lengths (or angles).

Mol	Type	Chain	Res	Link	Bond lengths			Bond angles		
					Counts	RMSZ	# Z > 2	Counts	RMSZ	# Z > 2
2	HEM	B	2901	1	42,50,50	1.32	6 (14%)	46,82,82	1.60	6 (13%)
3	H4B	B	2902	-	16,18,18	1.85	3 (18%)	14,26,26	5.06	7 (50%)
5	SO4	B	3004	-	4,4,4	0.38	0	6,6,6	0.10	0
3	H4B	A	902	-	16,18,18	1.86	3 (18%)	14,26,26	6.12	10 (71%)
5	SO4	B	3003	-	4,4,4	0.38	0	6,6,6	0.08	0
4	332	A	903	-	20,26,26	2.48	11 (55%)	19,36,36	1.48	3 (15%)
2	HEM	A	901	1	42,50,50	1.35	4 (9%)	46,82,82	1.53	8 (17%)
5	SO4	A	3003	-	4,4,4	0.38	0	6,6,6	0.06	0
4	332	B	2903	-	20,26,26	2.50	11 (55%)	19,36,36	1.55	3 (15%)
5	SO4	A	3004	-	4,4,4	0.38	0	6,6,6	0.10	0

In the following table, the Chirals column lists the number of chiral outliers, the number of chiral centers analysed, the number of these observed in the model and the number defined in the Chemical Component Dictionary. Similar counts are reported in the Torsion and Rings columns. '-' means no outliers of that kind were identified.

Mol	Type	Chain	Res	Link	Chirals	Torsions	Rings
2	HEM	B	2901	1	-	1/12/54/54	-
3	H4B	B	2902	-	1/1/3/5	3/8/17/17	0/2/2/2
3	H4B	A	902	-	1/1/3/5	4/8/17/17	0/2/2/2
4	332	A	903	-	-	1/4/25/25	0/3/4/4
2	HEM	A	901	1	-	1/12/54/54	-
4	332	B	2903	-	-	1/4/25/25	0/3/4/4

All (38) bond length outliers are listed below:

Mol	Chain	Res	Type	Atoms	Z	Observed(Å)	Ideal(Å)
3	A	902	H4B	C7-C6	-5.55	1.46	1.52
3	B	2902	H4B	C7-C6	-5.53	1.46	1.52
4	A	903	332	C14-C13	4.69	1.46	1.39
4	B	2903	332	C14-C13	4.65	1.46	1.39
4	A	903	332	C8-C11	4.44	1.62	1.51
4	B	2903	332	C8-C11	4.43	1.62	1.51
3	B	2902	H4B	C7-N8	-3.94	1.37	1.44
3	A	902	H4B	C7-N8	-3.85	1.38	1.44
4	A	903	332	C17-C18	3.79	1.44	1.38
4	B	2903	332	C17-C18	3.58	1.44	1.38
2	A	901	HEM	C3C-C4C	3.31	1.46	1.41
4	A	903	332	C9-C11	3.12	1.56	1.51
2	A	901	HEM	C3C-CAC	-3.06	1.40	1.47

Continued on next page...

Continued from previous page...

Mol	Chain	Res	Type	Atoms	Z	Observed(Å)	Ideal(Å)
4	B	2903	332	C18-C13	3.05	1.44	1.38
4	A	903	332	C21-C22	3.03	1.58	1.50
2	B	2901	HEM	C3C-C4C	3.03	1.45	1.41
4	B	2903	332	C21-C22	2.99	1.57	1.50
4	A	903	332	C18-C13	2.96	1.44	1.38
4	B	2903	332	O12-C13	2.95	1.44	1.37
4	B	2903	332	C9-C11	2.93	1.55	1.51
2	B	2901	HEM	C3C-CAC	-2.74	1.41	1.47
4	B	2903	332	C15-C16	2.71	1.45	1.40
4	A	903	332	C15-C16	2.69	1.45	1.40
4	A	903	332	O12-C13	2.68	1.43	1.37
2	A	901	HEM	CAB-C3B	-2.54	1.40	1.47
2	A	901	HEM	C1B-NB	-2.50	1.35	1.40
4	B	2903	332	C22-C16	2.44	1.55	1.51
4	A	903	332	C17-C16	2.43	1.43	1.39
4	B	2903	332	C19-N20	2.42	1.49	1.46
4	B	2903	332	C17-C16	2.31	1.43	1.39
2	B	2901	HEM	CAB-C3B	-2.19	1.41	1.47
2	B	2901	HEM	C2C-C1C	2.17	1.47	1.42
4	A	903	332	C22-C16	2.16	1.54	1.51
4	A	903	332	C19-N20	2.15	1.49	1.46
3	B	2902	H4B	C4A-N5	-2.12	1.33	1.37
3	A	902	H4B	C4A-N5	-2.09	1.33	1.37
2	B	2901	HEM	CBB-CAB	2.04	1.40	1.30
2	B	2901	HEM	CHA-C4D	2.02	1.39	1.34

All (37) bond angle outliers are listed below:

Mol	Chain	Res	Type	Atoms	Z	Observed(°)	Ideal(°)
3	A	902	H4B	C8A-C4A-C4	-16.80	99.20	114.50
3	B	2902	H4B	C8A-C4A-C4	-12.94	102.72	114.50
3	A	902	H4B	C4-C4A-N5	10.29	133.26	118.57
3	B	2902	H4B	O9-C9-C10	-8.37	93.21	109.14
3	B	2902	H4B	C4-C4A-N5	6.74	128.19	118.57
3	A	902	H4B	O9-C9-C6	-6.40	93.94	109.28
3	B	2902	H4B	C11-C10-C9	6.13	119.62	112.11
2	B	2901	HEM	C4B-CHC-C1C	5.83	130.25	122.56
3	A	902	H4B	C2-N3-C4	-4.80	109.29	115.96
3	A	902	H4B	C4A-C4-N3	4.76	135.93	123.91
2	A	901	HEM	C4B-CHC-C1C	4.59	128.62	122.56
3	A	902	H4B	O9-C9-C10	-4.34	100.89	109.14
2	A	901	HEM	C4C-CHD-C1D	4.27	128.19	122.56

Continued on next page...

Continued from previous page...

Mol	Chain	Res	Type	Atoms	Z	Observed(°)	Ideal(°)
2	B	2901	HEM	C4C-CHD-C1D	3.99	127.82	122.56
4	B	2903	332	C8-C11-N7	3.85	115.64	109.46
3	B	2902	H4B	C4A-N5-C6	-3.73	111.01	121.16
3	B	2902	H4B	C2-N1-C8A	-3.60	106.03	114.59
4	A	903	332	C8-C11-N7	3.51	115.09	109.46
4	B	2903	332	C9-O10-C3	3.16	123.85	116.18
4	A	903	332	C9-O10-C3	3.10	123.71	116.18
3	A	902	H4B	N2-C2-N1	-2.97	112.77	117.22
3	A	902	H4B	N1-C2-N3	2.95	130.01	125.48
2	A	901	HEM	CMD-C2D-C1D	2.86	129.51	125.03
4	B	2903	332	O12-C8-C11	2.81	114.37	108.29
2	A	901	HEM	C4B-C3B-C2B	-2.74	104.77	107.28
4	A	903	332	O12-C8-C11	2.69	114.11	108.29
3	A	902	H4B	C4A-N5-C6	-2.54	114.24	121.16
2	B	2901	HEM	CMD-C2D-C1D	2.38	128.76	125.03
2	A	901	HEM	C3B-C4B-NB	2.29	111.12	109.47
2	B	2901	HEM	CHC-C4B-NB	-2.26	122.00	124.44
2	B	2901	HEM	C4B-C3B-C2B	-2.22	105.23	107.28
3	A	902	H4B	C2-N1-C8A	-2.22	109.30	114.59
2	A	901	HEM	CAD-C3D-C2D	-2.22	123.72	127.87
2	A	901	HEM	CMC-C2C-C3C	2.19	129.07	124.68
2	A	901	HEM	CAD-C3D-C4D	2.14	128.43	124.70
2	B	2901	HEM	CBA-CAA-C2A	-2.03	109.13	112.54
3	B	2902	H4B	O10-C10-C11	-2.03	103.62	109.68

All (2) chirality outliers are listed below:

Mol	Chain	Res	Type	Atom
3	A	902	H4B	C6
3	B	2902	H4B	C6

All (11) torsion outliers are listed below:

Mol	Chain	Res	Type	Atoms
3	A	902	H4B	N5-C6-C9-O9
3	A	902	H4B	C7-C6-C9-O9
3	A	902	H4B	C7-C6-C9-C10
3	B	2902	H4B	N5-C6-C9-O9
3	B	2902	H4B	C7-C6-C9-O9
3	B	2902	H4B	C7-C6-C9-C10
4	A	903	332	C11-C8-O12-C13
4	B	2903	332	C11-C8-O12-C13

Continued on next page...

Continued from previous page...

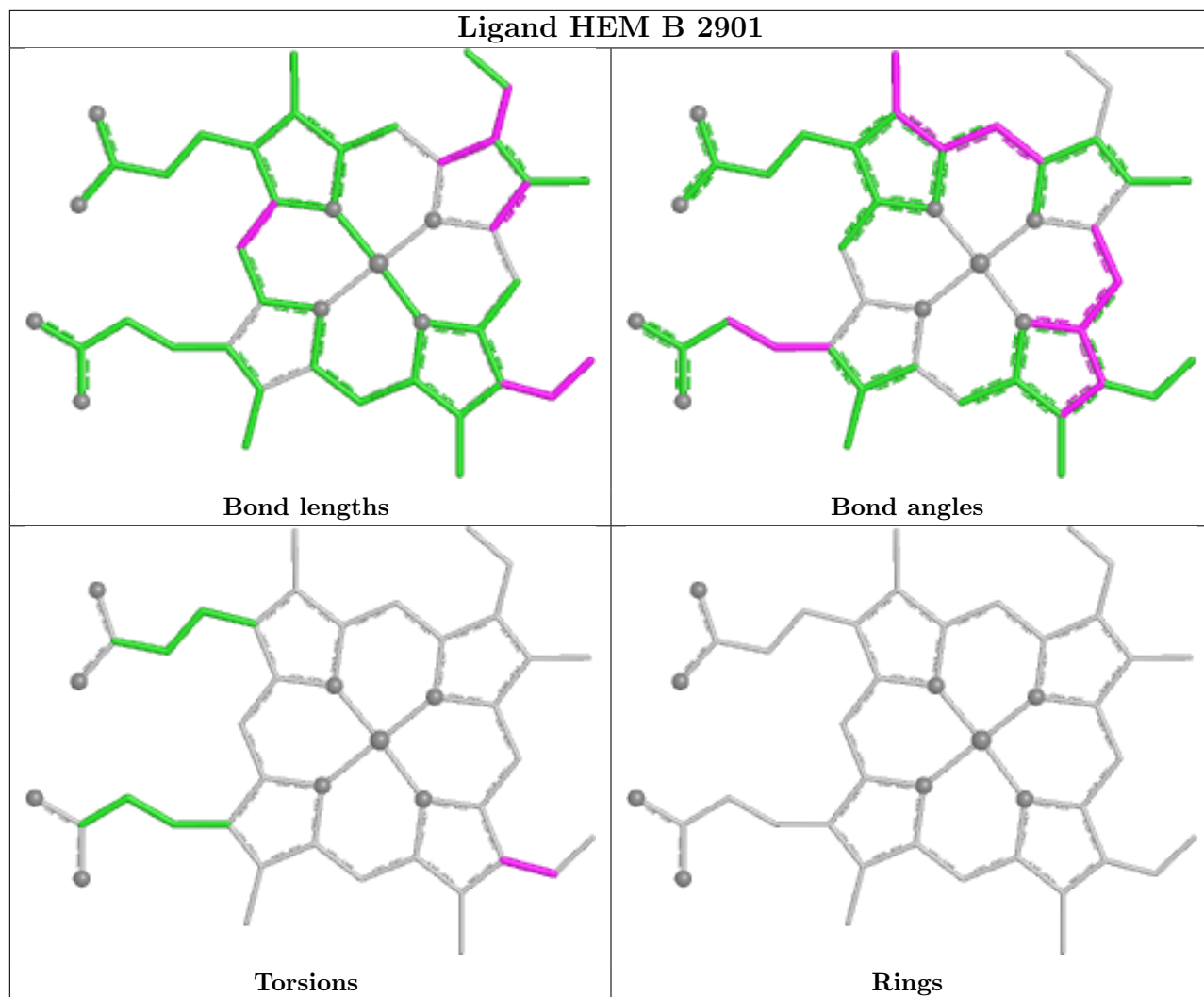
Mol	Chain	Res	Type	Atoms
2	B	2901	HEM	C4B-C3B-CAB-CBB
3	A	902	H4B	O10-C10-C9-C6
2	A	901	HEM	CAA-CBA-CGA-O2A

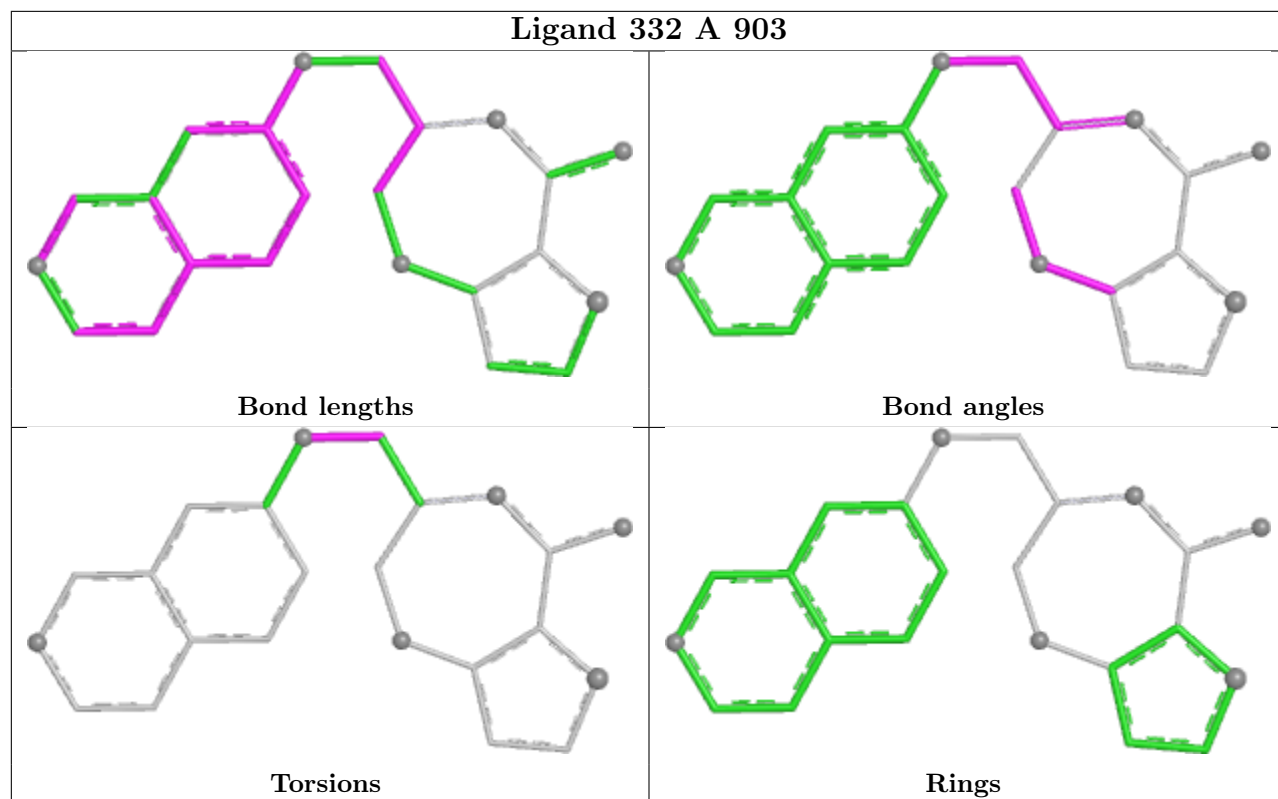
There are no ring outliers.

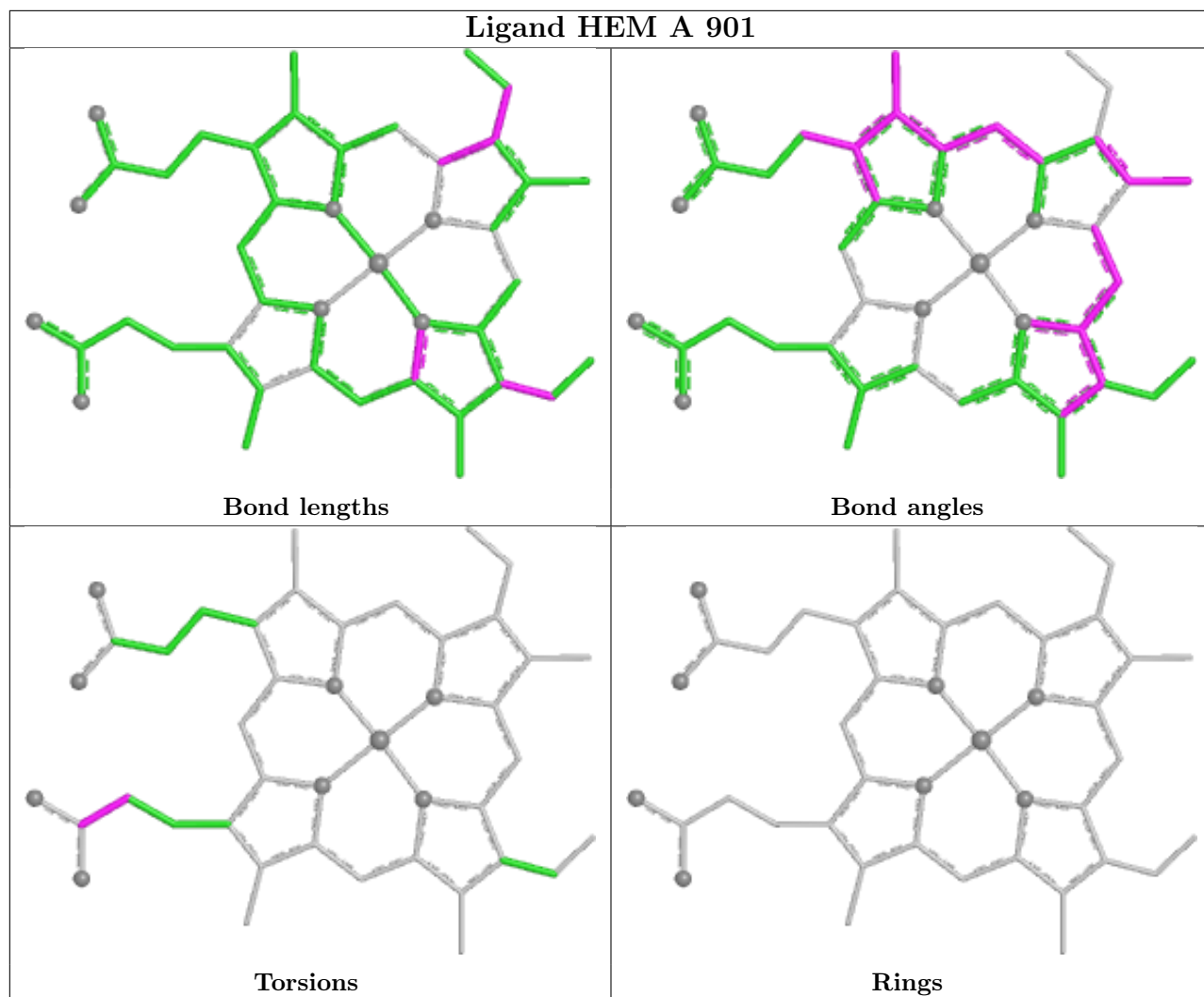
3 monomers are involved in 6 short contacts:

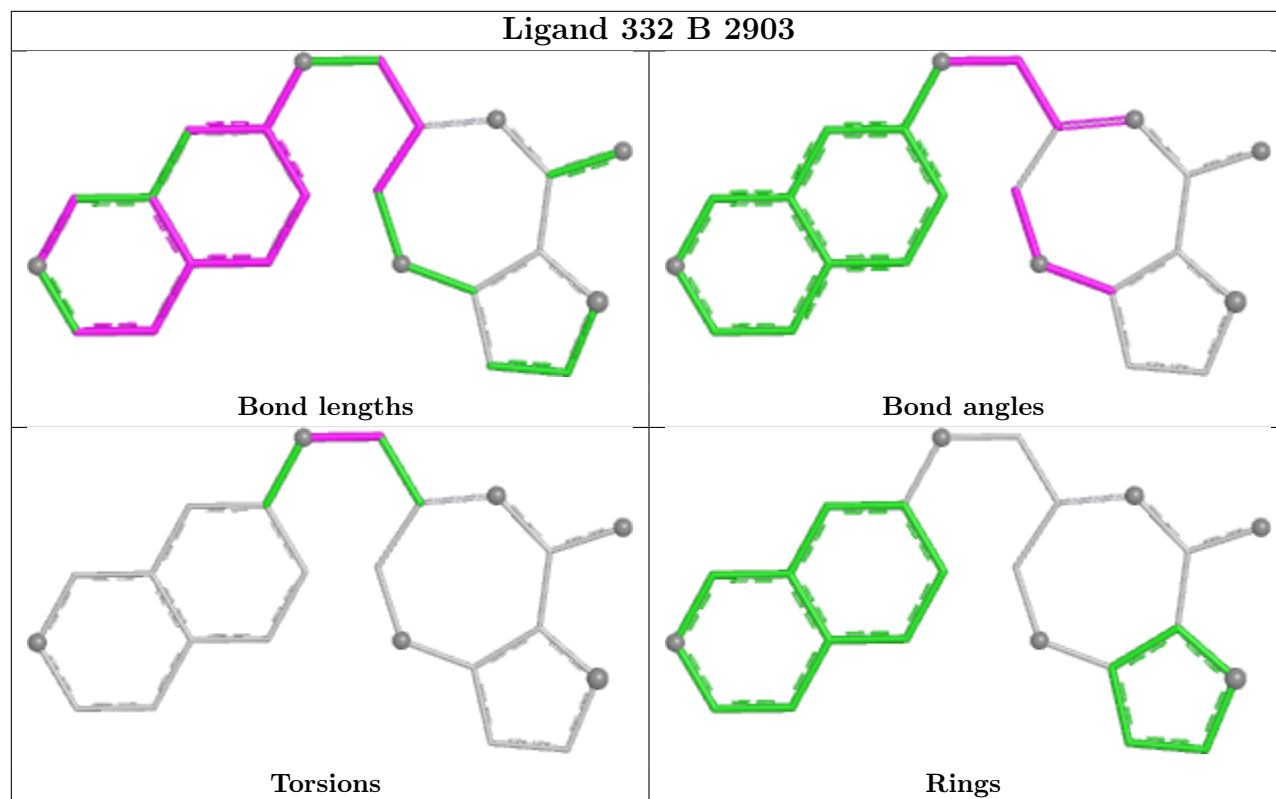
Mol	Chain	Res	Type	Clashes	Symm-Clashes
2	B	2901	HEM	2	0
4	A	903	332	1	0
4	B	2903	332	4	0

The following is a two-dimensional graphical depiction of Mogul quality analysis of bond lengths, bond angles, torsion angles, and ring geometry for all instances of the Ligand of Interest. In addition, ligands with molecular weight > 250 and outliers as shown on the validation Tables will also be included. For torsion angles, if less than 5% of the Mogul distribution of torsion angles is within 10 degrees of the torsion angle in question, then that torsion angle is considered an outlier. Any bond that is central to one or more torsion angles identified as an outlier by Mogul will be highlighted in the graph. For rings, the root-mean-square deviation (RMSD) between the ring in question and similar rings identified by Mogul is calculated over all ring torsion angles. If the average RMSD is greater than 60 degrees and the minimal RMSD between the ring in question and any Mogul-identified rings is also greater than 60 degrees, then that ring is considered an outlier. The outliers are highlighted in purple. The color gray indicates Mogul did not find sufficient equivalents in the CSD to analyse the geometry.









5.7 Other polymers [i](#)

There are no such residues in this entry.

5.8 Polymer linkage issues [i](#)

There are no chain breaks in this entry.

6 Fit of model and data

6.1 Protein, DNA and RNA chains

In the following table, the column labelled ‘#RSRZ > 2’ contains the number (and percentage) of RSRZ outliers, followed by percent RSRZ outliers for the chain as percentile scores relative to all X-ray entries and entries of similar resolution. The OWAB column contains the minimum, median, 95th percentile and maximum values of the occupancy-weighted average B-factor per residue. The column labelled ‘Q < 0.9’ lists the number of (and percentage) of residues with an average occupancy less than 0.9.

Mol	Chain	Analysed	<RSRZ>	#RSRZ>2	OWAB(Å ²)	Q<0.9
1	A	421/433 (97%)	0.21	27 (6%) 19 25	17, 32, 56, 86	0
1	B	421/433 (97%)	0.17	30 (7%) 16 21	16, 29, 55, 84	0
All	All	842/866 (97%)	0.19	57 (6%) 17 22	16, 30, 56, 86	0

All (57) RSRZ outliers are listed below:

Mol	Chain	Res	Type	RSRZ
1	B	103	THR	13.4
1	A	103	THR	12.8
1	B	106	SER	9.6
1	A	106	SER	9.0
1	A	102	PHE	8.0
1	A	104	CYS	7.8
1	B	104	CYS	7.2
1	B	108	SER	7.0
1	B	102	PHE	6.8
1	B	101	ASP	6.6
1	B	107	LYS	6.0
1	A	107	LYS	5.3
1	B	100	SER	5.3
1	A	108	SER	4.6
1	A	149	LYS	4.5
1	B	99	THR	4.4
1	B	78	TYR	4.4
1	A	496	GLN	4.4
1	B	105	LYS	4.3
1	A	101	ASP	4.3
1	A	105	LYS	4.3
1	B	149	LYS	3.8
1	A	495	TRP	3.6
1	B	494	ILE	3.5

Continued on next page...

Continued from previous page...

Mol	Chain	Res	Type	RSRZ
1	A	398	HIS	3.5
1	A	334	GLN	3.3
1	A	78	TYR	3.3
1	A	157	LEU	3.2
1	A	148	PHE	3.0
1	B	497	ASN	3.0
1	A	100	SER	2.9
1	A	150	GLU	2.9
1	B	130	LEU	2.8
1	B	111	GLY	2.8
1	B	150	GLU	2.8
1	A	152	LYS	2.7
1	A	91	HIS	2.6
1	B	110	LEU	2.5
1	B	98	ALA	2.5
1	A	110	LEU	2.4
1	B	148	PHE	2.4
1	B	91	HIS	2.4
1	B	446	ARG	2.4
1	B	495	TRP	2.2
1	B	169	THR	2.2
1	A	494	ILE	2.2
1	A	109	CYS	2.2
1	B	459	VAL	2.2
1	B	80	ARG	2.2
1	B	109	CYS	2.1
1	B	152	LYS	2.1
1	A	346	VAL	2.1
1	A	497	ASN	2.1
1	B	131	GLU	2.1
1	A	331	GLU	2.1
1	A	258	LEU	2.1
1	B	77	GLN	2.0

6.2 Non-standard residues in protein, DNA, RNA chains [i](#)

There are no non-standard protein/DNA/RNA residues in this entry.

6.3 Carbohydrates [i](#)

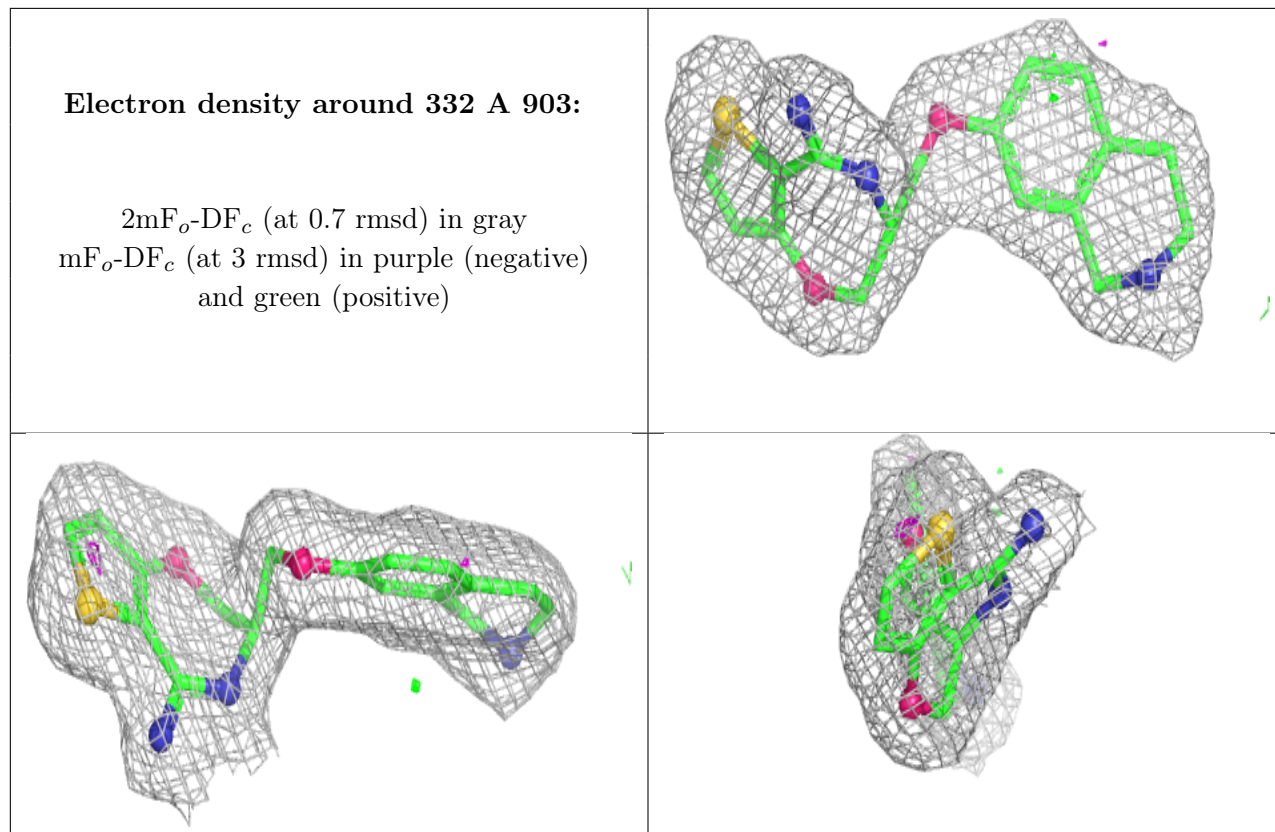
There are no monosaccharides in this entry.

6.4 Ligands [i](#)

In the following table, the Atoms column lists the number of modelled atoms in the group and the number defined in the chemical component dictionary. The B-factors column lists the minimum, median, 95th percentile and maximum values of B factors of atoms in the group. The column labelled 'Q< 0.9' lists the number of atoms with occupancy less than 0.9.

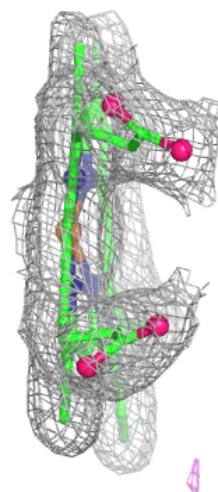
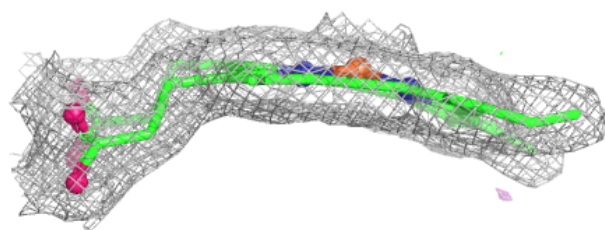
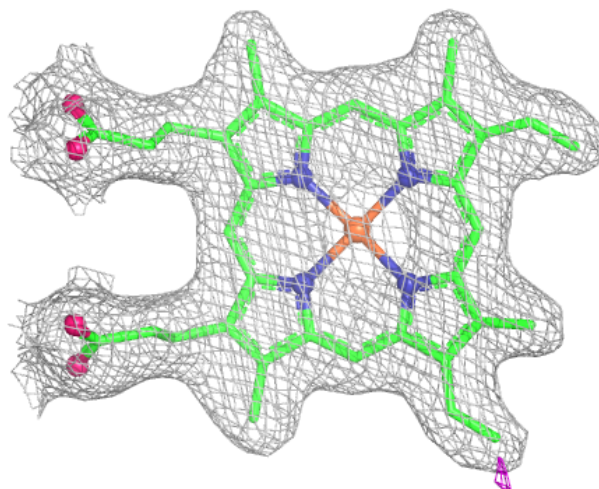
Mol	Type	Chain	Res	Atoms	RSCC	RSR	B-factors(Å ²)	Q<0.9
5	SO4	A	3004	5/5	0.78	0.34	82,83,84,84	0
5	SO4	A	3003	5/5	0.80	0.33	87,87,88,88	0
5	SO4	B	3004	5/5	0.86	0.35	84,84,85,85	0
5	SO4	B	3003	5/5	0.93	0.33	89,89,89,90	0
3	H4B	A	902	17/17	0.97	0.10	13,23,26,26	0
4	332	A	903	23/23	0.97	0.16	16,20,22,24	0
2	HEM	A	901	43/43	0.98	0.15	15,19,22,24	0
3	H4B	B	2902	17/17	0.98	0.13	14,19,22,23	0
2	HEM	B	2901	43/43	0.98	0.15	13,16,18,19	0
4	332	B	2903	23/23	0.98	0.14	13,18,22,23	0

The following is a graphical depiction of the model fit to experimental electron density of all instances of the Ligand of Interest. In addition, ligands with molecular weight > 250 and outliers as shown on the geometry validation Tables will also be included. Each fit is shown from different orientation to approximate a three-dimensional view.



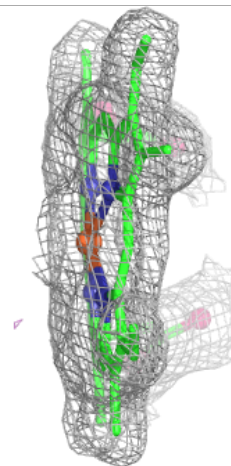
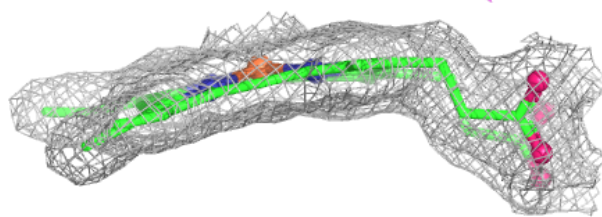
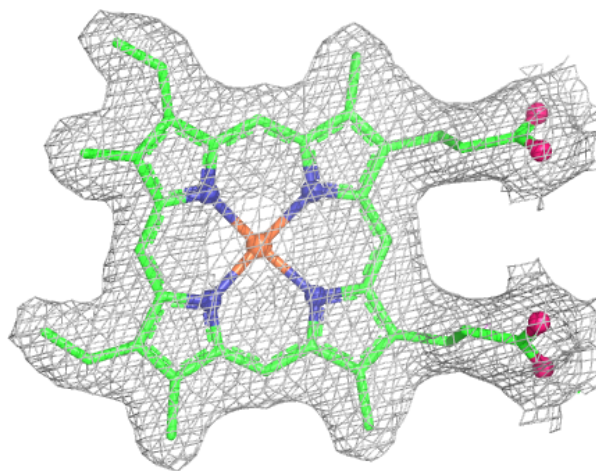
Electron density around HEM A 901:

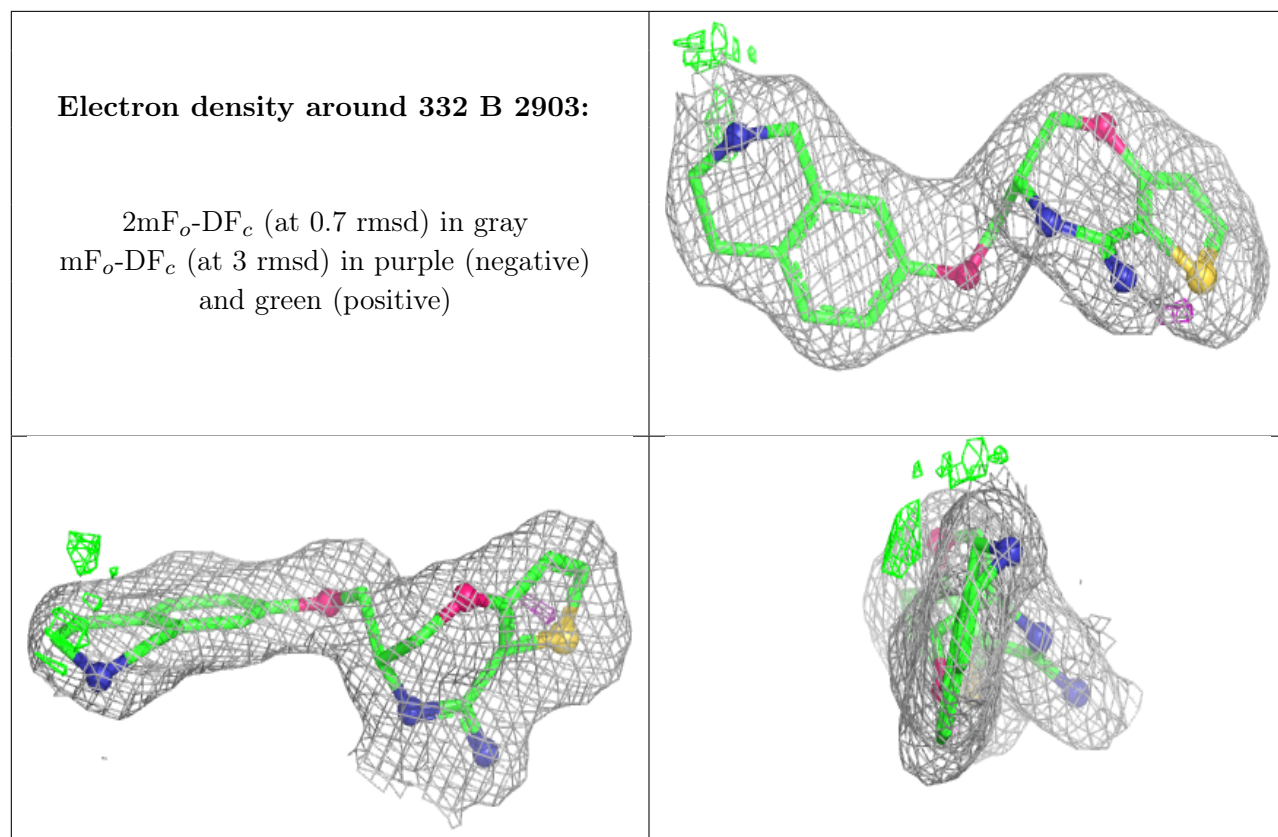
$2mF_o-DF_c$ (at 0.7 rmsd) in gray
 mF_o-DF_c (at 3 rmsd) in purple (negative)
and green (positive)



Electron density around HEM B 2901:

$2mF_o-DF_c$ (at 0.7 rmsd) in gray
 mF_o-DF_c (at 3 rmsd) in purple (negative)
and green (positive)





6.5 Other polymers [i](#)

There are no such residues in this entry.