



# Full wwPDB X-ray Structure Validation Report ⓘ

Aug 22, 2023 – 11:39 PM EDT

PDB ID : 3E77  
Title : Human phosphoserine aminotransferase in complex with PLP  
Authors : Lehtio, L.; Karlberg, T.; Andersson, J.; Arrowsmith, C.H.; Berglund, H.; Bountra, C.; Collins, R.; Dahlgren, L.G.; Edwards, A.M.; Flodin, S.; Flores, A.; Graslund, S.; Hammarstrom, M.; Johansson, A.; Johansson, I.; Kotenyova, T.; Moche, M.; Nilsson, M.E.; Nordlund, P.; Nyman, T.; Olesen, K.; Persson, C.; Sagemark, J.; Thorsell, S.G.; Tresaugues, L.; Van Den Berg, S.; Welin, M.; Wikstrom, M.; Wisniewska, M.; Weigelt, J.; Schueler, H.; Structural Genomics Consortium (SGC)  
Deposited on : 2008-08-18  
Resolution : 2.50 Å (reported)

This is a Full wwPDB X-ray Structure Validation Report for a publicly released PDB entry.

We welcome your comments at [validation@mail.wwpdb.org](mailto:validation@mail.wwpdb.org)

A user guide is available at

<https://www.wwpdb.org/validation/2017/XrayValidationReportHelp>

with specific help available everywhere you see the ⓘ symbol.

The types of validation reports are described at

<http://www.wwpdb.org/validation/2017/FAQs#types>.

---

The following versions of software and data (see [references ⓘ](#)) were used in the production of this report:

MolProbity : 4.02b-467  
Mogul : 1.8.5 (274361), CSD as541be (2020)  
Xtriage (Phenix) : 1.13  
EDS : 2.35  
Percentile statistics : 20191225.v01 (using entries in the PDB archive December 25th 2019)  
Refmac : 5.8.0158  
CCP4 : 7.0.044 (Gargrove)

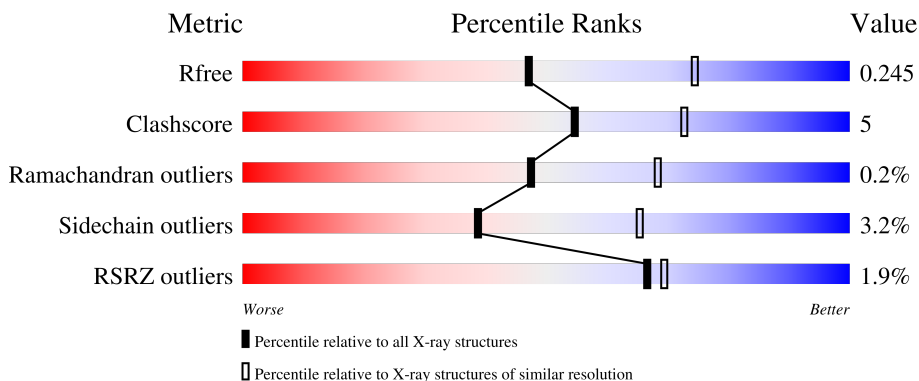
# 1 Overall quality at a glance

The following experimental techniques were used to determine the structure:

*X-RAY DIFFRACTION*


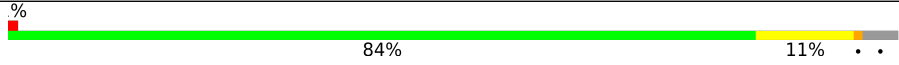
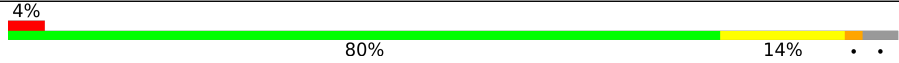
The reported resolution of this entry is 2.50 Å.

Percentile scores (ranging between 0-100) for global validation metrics of the entry are shown in the following graphic. The table shows the number of entries on which the scores are based.



Metric	Whole archive (#Entries)	Similar resolution (#Entries, resolution range(Å))
$R_{free}$	130704	4661 (2.50-2.50)
Clashscore	141614	5346 (2.50-2.50)
Ramachandran outliers	138981	5231 (2.50-2.50)
Sidechain outliers	138945	5233 (2.50-2.50)
RSRZ outliers	127900	4559 (2.50-2.50)

The table below summarises the geometric issues observed across the polymeric chains and their fit to the electron density. The red, orange, yellow and green segments of the lower bar indicate the fraction of residues that contain outliers for  $\geq 3$ , 2, 1 and 0 types of geometric quality criteria respectively. A grey segment represents the fraction of residues that are not modelled. The numeric value for each fraction is indicated below the corresponding segment, with a dot representing fractions  $\leq 5\%$ . The upper red bar (where present) indicates the fraction of residues that have poor fit to the electron density. The numeric value is given above the bar.

Mol	Chain	Length	Quality of chain
1	A	377	
1	B	377	
1	C	377	

Ideal geometry (proteins) : Engh & Huber (2001)  
 Ideal geometry (DNA, RNA) : Parkinson et al. (1996)  
 Validation Pipeline (wwPDB-VP) : 2.35

## 2 Entry composition

There are 4 unique types of molecules in this entry. The entry contains 8536 atoms, of which 0 are hydrogens and 0 are deuteriums.

In the tables below, the ZeroOcc column contains the number of atoms modelled with zero occupancy, the AltConf column contains the number of residues with at least one atom in alternate conformation and the Trace column contains the number of residues modelled with at most 2 atoms.

- Molecule 1 is a protein called Phosphoserine aminotransferase.

Mol	Chain	Residues	Atoms					ZeroOcc	AltConf	Trace
			Total	C	N	O	S			
1	A	363	2788	1788	463	521	16	0	0	0
1	B	362	2769	1778	458	518	15	0	0	0
1	C	362	2777	1780	461	520	16	0	0	0

There are 69 discrepancies between the modelled and reference sequences:

Chain	Residue	Modelled	Actual	Comment	Reference
A	-6	MET	-	expression tag	UNP Q9Y617
A	-5	HIS	-	expression tag	UNP Q9Y617
A	-4	HIS	-	expression tag	UNP Q9Y617
A	-3	HIS	-	expression tag	UNP Q9Y617
A	-2	HIS	-	expression tag	UNP Q9Y617
A	-1	HIS	-	expression tag	UNP Q9Y617
A	0	HIS	-	expression tag	UNP Q9Y617
A	1	SER	-	expression tag	UNP Q9Y617
A	2	SER	-	expression tag	UNP Q9Y617
A	3	GLY	-	expression tag	UNP Q9Y617
A	4	VAL	-	expression tag	UNP Q9Y617
A	5	ASP	-	expression tag	UNP Q9Y617
A	6	LEU	-	expression tag	UNP Q9Y617
A	7	GLY	-	expression tag	UNP Q9Y617
A	8	THR	-	expression tag	UNP Q9Y617
A	9	GLU	-	expression tag	UNP Q9Y617
A	10	ASN	-	expression tag	UNP Q9Y617
A	11	LEU	-	expression tag	UNP Q9Y617
A	12	TYR	-	expression tag	UNP Q9Y617
A	13	PHE	-	expression tag	UNP Q9Y617
A	14	GLN	-	expression tag	UNP Q9Y617
A	15	SER	-	expression tag	UNP Q9Y617
A	16	MET	-	expression tag	UNP Q9Y617

*Continued on next page...*

*Continued from previous page...*

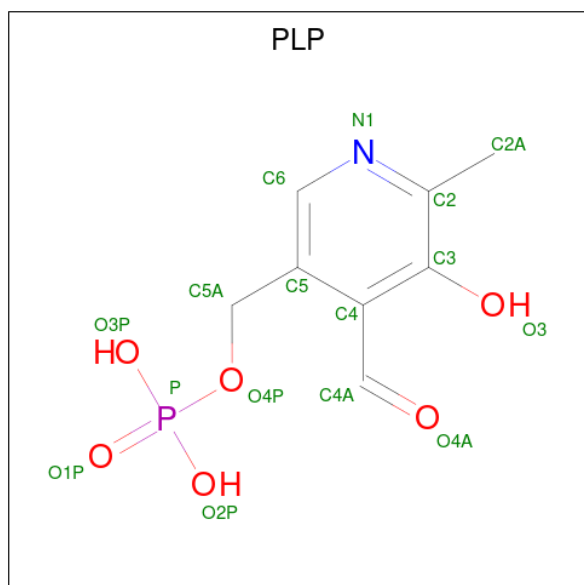
Chain	Residue	Modelled	Actual	Comment	Reference
B	-6	MET	-	expression tag	UNP Q9Y617
B	-5	HIS	-	expression tag	UNP Q9Y617
B	-4	HIS	-	expression tag	UNP Q9Y617
B	-3	HIS	-	expression tag	UNP Q9Y617
B	-2	HIS	-	expression tag	UNP Q9Y617
B	-1	HIS	-	expression tag	UNP Q9Y617
B	0	HIS	-	expression tag	UNP Q9Y617
B	1	SER	-	expression tag	UNP Q9Y617
B	2	SER	-	expression tag	UNP Q9Y617
B	3	GLY	-	expression tag	UNP Q9Y617
B	4	VAL	-	expression tag	UNP Q9Y617
B	5	ASP	-	expression tag	UNP Q9Y617
B	6	LEU	-	expression tag	UNP Q9Y617
B	7	GLY	-	expression tag	UNP Q9Y617
B	8	THR	-	expression tag	UNP Q9Y617
B	9	GLU	-	expression tag	UNP Q9Y617
B	10	ASN	-	expression tag	UNP Q9Y617
B	11	LEU	-	expression tag	UNP Q9Y617
B	12	TYR	-	expression tag	UNP Q9Y617
B	13	PHE	-	expression tag	UNP Q9Y617
B	14	GLN	-	expression tag	UNP Q9Y617
B	15	SER	-	expression tag	UNP Q9Y617
B	16	MET	-	expression tag	UNP Q9Y617
C	-6	MET	-	expression tag	UNP Q9Y617
C	-5	HIS	-	expression tag	UNP Q9Y617
C	-4	HIS	-	expression tag	UNP Q9Y617
C	-3	HIS	-	expression tag	UNP Q9Y617
C	-2	HIS	-	expression tag	UNP Q9Y617
C	-1	HIS	-	expression tag	UNP Q9Y617
C	0	HIS	-	expression tag	UNP Q9Y617
C	1	SER	-	expression tag	UNP Q9Y617
C	2	SER	-	expression tag	UNP Q9Y617
C	3	GLY	-	expression tag	UNP Q9Y617
C	4	VAL	-	expression tag	UNP Q9Y617
C	5	ASP	-	expression tag	UNP Q9Y617
C	6	LEU	-	expression tag	UNP Q9Y617
C	7	GLY	-	expression tag	UNP Q9Y617
C	8	THR	-	expression tag	UNP Q9Y617
C	9	GLU	-	expression tag	UNP Q9Y617
C	10	ASN	-	expression tag	UNP Q9Y617
C	11	LEU	-	expression tag	UNP Q9Y617
C	12	TYR	-	expression tag	UNP Q9Y617

*Continued on next page...*

Continued from previous page...

Chain	Residue	Modelled	Actual	Comment	Reference
C	13	PHE	-	expression tag	UNP Q9Y617
C	14	GLN	-	expression tag	UNP Q9Y617
C	15	SER	-	expression tag	UNP Q9Y617
C	16	MET	-	expression tag	UNP Q9Y617

- Molecule 2 is PYRIDOXAL-5'-PHOSPHATE (three-letter code: PLP) (formula: C<sub>8</sub>H<sub>10</sub>NO<sub>6</sub>P).



Mol	Chain	Residues	Atoms					ZeroOcc	AltConf
			Total	C	N	O	P		
2	A	1	Total	C	N	O	P	0	0
			15	8	1	5	1		
2	B	1	Total	C	N	O	P	0	0
			15	8	1	5	1		

- Molecule 3 is GLYCEROL (three-letter code: GOL) (formula: C<sub>3</sub>H<sub>8</sub>O<sub>3</sub>).



Mol	Chain	Residues	Atoms	ZeroOcc	AltConf
3	A	1	Total C O 6 3 3	0	0

- Molecule 4 is water.

Mol	Chain	Residues	Atoms	ZeroOcc	AltConf
4	A	86	Total O 86 86	0	0
4	B	51	Total O 51 51	0	0
4	C	29	Total O 29 29	0	0



## 4 Data and refinement statistics i

Property	Value	Source
Space group	P 31 2 1	Depositor
Cell constants a, b, c, $\alpha$ , $\beta$ , $\gamma$	171.00Å 171.00Å 103.88Å 90.00° 90.00° 120.00°	Depositor
Resolution (Å)	19.59 – 2.50 19.57 – 2.50	Depositor EDS
% Data completeness (in resolution range)	100.0 (19.59-2.50) 99.3 (19.57-2.50)	Depositor EDS
$R_{merge}$	0.09	Depositor
$R_{sym}$	(Not available)	Depositor
$\langle I/\sigma(I) \rangle$ <sup>1</sup>	2.37 (at 2.50Å)	Xtrriage
Refinement program	REFMAC 5.5.0044	Depositor
R, $R_{free}$	0.196 , 0.244 0.196 , 0.245	Depositor DCC
$R_{free}$ test set	3005 reflections (5.00%)	wwPDB-VP
Wilson B-factor (Å <sup>2</sup> )	35.8	Xtrriage
Anisotropy	0.183	Xtrriage
Bulk solvent $k_{sol}$ (e/Å <sup>3</sup> ), $B_{sol}$ (Å <sup>2</sup> )	0.39 , 54.3	EDS
L-test for twinning <sup>2</sup>	$\langle  L  \rangle = 0.44$ , $\langle L^2 \rangle = 0.26$	Xtrriage
Estimated twinning fraction	0.049 for -h,-k,l	Xtrriage
$F_o, F_c$ correlation	0.94	EDS
Total number of atoms	8536	wwPDB-VP
Average B, all atoms (Å <sup>2</sup> )	28.0	wwPDB-VP

Xtrriage's analysis on translational NCS is as follows: *The largest off-origin peak in the Patterson function is 2.47% of the height of the origin peak. No significant pseudotranslation is detected.*

<sup>1</sup>Intensities estimated from amplitudes.

<sup>2</sup>Theoretical values of  $\langle |L| \rangle$ ,  $\langle L^2 \rangle$  for acentric reflections are 0.5, 0.333 respectively for untwinned datasets, and 0.375, 0.2 for perfectly twinned datasets.



## 5 Model quality

### 5.1 Standard geometry

Bond lengths and bond angles in the following residue types are not validated in this section: GOL, PLP

The Z score for a bond length (or angle) is the number of standard deviations the observed value is removed from the expected value. A bond length (or angle) with  $|Z| > 5$  is considered an outlier worth inspection. RMSZ is the root-mean-square of all Z scores of the bond lengths (or angles).

Mol	Chain	Bond lengths		Bond angles	
		RMSZ	# Z  >5	RMSZ	# Z  >5
1	A	0.60	0/2845	0.67	0/3853
1	B	0.59	0/2826	0.66	0/3829
1	C	0.59	0/2834	0.65	0/3840
All	All	0.59	0/8505	0.66	0/11522

There are no bond length outliers.

There are no bond angle outliers.

There are no chirality outliers.

There are no planarity outliers.

### 5.2 Too-close contacts

In the following table, the Non-H and H(model) columns list the number of non-hydrogen atoms and hydrogen atoms in the chain respectively. The H(added) column lists the number of hydrogen atoms added and optimized by MolProbity. The Clashes column lists the number of clashes within the asymmetric unit, whereas Symm-Clashes lists symmetry-related clashes.

Mol	Chain	Non-H	H(model)	H(added)	Clashes	Symm-Clashes
1	A	2788	0	2784	25	0
1	B	2769	0	2760	30	0
1	C	2777	0	2775	35	0
2	A	15	0	7	0	0
2	B	15	0	7	0	0
3	A	6	0	8	1	0
4	A	86	0	0	2	0
4	B	51	0	0	0	0
4	C	29	0	0	1	0
All	All	8536	0	8341	86	0

The all-atom clashscore is defined as the number of clashes found per 1000 atoms (including hydrogen atoms). The all-atom clashscore for this structure is 5.

All (86) close contacts within the same asymmetric unit are listed below, sorted by their clash magnitude.

Atom-1	Atom-2	Interatomic distance (Å)	Clash overlap (Å)
1:C:35:VAL:HG12	1:C:37:ILE:HG22	1.54	0.90
1:B:75:LEU:CD2	1:B:233:GLN:HG2	2.06	0.85
1:B:75:LEU:HD21	1:B:233:GLN:HG2	1.65	0.78
1:A:75:LEU:HD21	1:A:233:GLN:HG2	1.64	0.78
1:C:124:VAL:HG11	1:C:142:LEU:HD23	1.68	0.74
1:A:75:LEU:CD2	1:A:233:GLN:HG2	2.18	0.74
1:B:124:VAL:CG1	1:B:140:TRP:HB3	2.20	0.72
1:B:274:LYS:HE3	1:B:349:VAL:O	1.93	0.67
1:B:124:VAL:HG11	1:B:140:TRP:HB3	1.80	0.62
1:C:363:LYS:O	1:C:367:MET:HG3	2.00	0.61
1:B:50:ALA:O	1:B:54:ASN:HB2	2.02	0.59
1:B:100:ASP:HB3	1:B:124:VAL:CG2	2.32	0.59
1:A:86:VAL:HB	1:A:87:PRO:HD3	1.84	0.59
1:A:124:VAL:CG1	1:A:140:TRP:HB3	2.33	0.58
1:B:11:LEU:HD11	1:B:353:ASP:CG	2.24	0.58
1:C:15:SER:HB3	1:C:200:LYS:O	2.05	0.57
1:C:75:LEU:CD2	1:C:233:GLN:HG2	2.34	0.57
1:C:168:VAL:CG1	1:C:173:LEU:HD13	2.34	0.57
1:B:210:VAL:HG12	1:B:212:VAL:HG22	1.88	0.55
1:C:233:GLN:HG3	1:C:238:SER:HA	1.88	0.54
1:A:295:PRO:HA	1:A:298:ARG:HD2	1.89	0.54
1:A:23:LEU:HD12	1:C:9:GLU:HB2	1.91	0.53
1:A:364:PHE:HA	1:A:367:MET:HE2	1.90	0.53
1:C:32:TYR:O	1:C:35:VAL:HB	2.08	0.52
1:A:313:ASP:OD2	1:A:316:LEU:HB2	2.09	0.52
1:C:86:VAL:HB	1:C:87:PRO:HD3	1.92	0.51
1:A:30:LEU:HD23	1:B:22:LEU:HB3	1.93	0.51
1:C:202:VAL:HG13	1:C:202:VAL:O	2.11	0.51
1:A:129:GLY:N	3:A:500:GOL:O3	2.33	0.51
1:C:295:PRO:HA	1:C:298:ARG:HD2	1.92	0.50
1:A:124:VAL:HG11	1:A:140:TRP:HB3	1.94	0.50
1:C:93:LEU:HD11	1:C:216:LEU:HD22	1.93	0.50
1:C:168:VAL:HG11	1:C:173:LEU:HD13	1.93	0.49
1:A:17:LEU:HD12	1:A:22:LEU:HD21	1.93	0.49
1:B:256:GLU:O	1:B:260:ASN:ND2	2.45	0.49
1:C:190:LYS:HE3	4:C:394:HOH:O	2.12	0.48
1:B:276:GLN:O	1:B:280:GLU:HB2	2.13	0.48

*Continued on next page...*

*Continued from previous page...*

Atom-1	Atom-2	Interatomic distance (Å)	Clash overlap (Å)
1:A:362:LYS:O	1:A:366:GLU:HG2	2.14	0.48
1:C:101:TYR:O	1:C:124:VAL:HG23	2.14	0.48
1:C:198:ALA:HA	1:C:202:VAL:HG12	1.96	0.47
1:A:102:VAL:HG21	1:A:140:TRP:CH2	2.50	0.47
1:B:11:LEU:HD11	1:B:353:ASP:OD2	2.14	0.47
1:B:35:VAL:HG12	1:B:35:VAL:O	2.15	0.46
1:C:323:LYS:HE2	1:C:326:GLU:OE1	2.14	0.46
1:A:35:VAL:O	1:A:35:VAL:HG12	2.15	0.46
1:B:124:VAL:HG12	1:B:140:TRP:HB3	1.94	0.46
1:B:100:ASP:HB3	1:B:124:VAL:HG22	1.98	0.46
1:B:82:GLN:HA	1:B:85:ALA:HB3	1.98	0.46
1:B:202:VAL:O	1:B:202:VAL:CG1	2.62	0.46
1:A:82:GLN:HA	1:A:85:ALA:HB3	1.98	0.45
1:C:90:LEU:O	1:C:93:LEU:HB2	2.16	0.45
1:B:28:GLU:HG2	1:B:33:LYS:H	1.80	0.45
1:B:193:VAL:HG22	1:B:212:VAL:HG13	1.97	0.45
1:A:78:GLY:HA3	4:A:509:HOH:O	2.15	0.45
1:A:351:ILE:HD12	1:C:351:ILE:HG21	1.98	0.45
1:C:32:TYR:CZ	1:C:33:LYS:HD2	2.52	0.44
1:C:281:ILE:HD13	1:C:362:LYS:HG3	1.99	0.44
1:A:110:LYS:NZ	4:A:543:HOH:O	2.49	0.44
1:C:352:GLU:HG2	1:C:356:LYS:HE3	1.99	0.44
1:C:98:CYS:HA	1:C:120:THR:O	2.18	0.43
1:C:107:TRP:HE1	1:C:156:THR:HB	1.83	0.43
1:A:100:ASP:HB2	1:A:149:VAL:HG22	1.99	0.43
1:C:179:SER:HA	1:C:200:LYS:HB3	2.00	0.43
1:C:82:GLN:NE2	1:C:230:TYR:OH	2.51	0.43
1:B:12:TYR:HB3	1:B:14:GLN:HG2	2.00	0.43
1:B:61:ARG:HA	1:B:66:VAL:HG23	2.01	0.43
1:B:181:PHE:HD2	1:B:202:VAL:HG21	1.83	0.42
1:C:233:GLN:OE1	1:C:240:TYR:HB3	2.20	0.42
1:B:182:LEU:HD23	1:B:182:LEU:HA	1.87	0.42
1:C:114:GLU:OE2	1:C:117:LYS:HE2	2.20	0.42
1:B:44:HIS:HB2	1:B:243:PRO:HD2	2.02	0.42
1:B:87:PRO:O	1:B:91:ILE:HG22	2.19	0.42
1:A:29:LEU:O	1:A:29:LEU:HG	2.19	0.42
1:C:11:LEU:HD21	1:C:356:LYS:HD3	2.02	0.42
1:C:244:PRO:O	1:C:247:SER:HB2	2.20	0.41
1:C:11:LEU:HD12	1:C:11:LEU:N	2.36	0.41
1:B:100:ASP:HB2	1:B:149:VAL:HG22	2.01	0.41
1:B:294:GLU:HA	1:B:295:PRO:HD2	1.80	0.41

*Continued on next page...*

Continued from previous page...

Atom-1	Atom-2	Interatomic distance (Å)	Clash overlap (Å)
1:A:241:ASN:HD22	1:B:80:CYS:HB2	1.85	0.41
1:B:32:TYR:O	1:B:35:VAL:HG23	2.21	0.41
1:C:301:MET:HE1	1:C:346:TYR:HA	2.03	0.41
1:C:301:MET:HE3	1:C:346:TYR:HD1	1.86	0.41
1:A:84:SER:OG	1:A:114:GLU:OE2	2.39	0.40
1:A:15:SER:HB3	1:A:200:LYS:O	2.22	0.40
1:A:210:VAL:HG12	1:A:212:VAL:HG23	2.03	0.40
1:C:51:LYS:HB2	1:C:51:LYS:NZ	2.37	0.40

There are no symmetry-related clashes.

## 5.3 Torsion angles [i](#)

### 5.3.1 Protein backbone [i](#)

In the following table, the Percentiles column shows the percent Ramachandran outliers of the chain as a percentile score with respect to all X-ray entries followed by that with respect to entries of similar resolution.

The Analysed column shows the number of residues for which the backbone conformation was analysed, and the total number of residues.

Mol	Chain	Analysed	Favoured	Allowed	Outliers	Percentiles	
1	A	361/377 (96%)	348 (96%)	12 (3%)	1 (0%)	41	61
1	B	360/377 (96%)	344 (96%)	16 (4%)	0	100	100
1	C	360/377 (96%)	340 (94%)	19 (5%)	1 (0%)	41	61
All	All	1081/1131 (96%)	1032 (96%)	47 (4%)	2 (0%)	47	68

All (2) Ramachandran outliers are listed below:

Mol	Chain	Res	Type
1	C	336	ARG
1	A	33	LYS

### 5.3.2 Protein sidechains [i](#)

In the following table, the Percentiles column shows the percent sidechain outliers of the chain as a percentile score with respect to all X-ray entries followed by that with respect to entries of similar resolution.

The Analysed column shows the number of residues for which the sidechain conformation was analysed, and the total number of residues.

Mol	Chain	Analysed	Rotameric	Outliers	Percentiles	
1	A	302/319 (95%)	298 (99%)	4 (1%)	69	87
1	B	299/319 (94%)	290 (97%)	9 (3%)	41	68
1	C	302/319 (95%)	286 (95%)	16 (5%)	22	43
All	All	903/957 (94%)	874 (97%)	29 (3%)	39	65

All (29) residues with a non-rotameric sidechain are listed below:

Mol	Chain	Res	Type
1	A	24	GLU
1	A	93	LEU
1	A	128	LEU
1	A	271	SER
1	B	27	LYS
1	B	28	GLU
1	B	54	ASN
1	B	156	THR
1	B	202	VAL
1	B	280	GLU
1	B	319	ARG
1	B	355	GLN
1	B	366	GLU
1	C	15	SER
1	C	45	ARG
1	C	51	LYS
1	C	54	ASN
1	C	93	LEU
1	C	124	VAL
1	C	128	LEU
1	C	139	THR
1	C	184	LYS
1	C	202	VAL
1	C	204	SER
1	C	217	LEU
1	C	238	SER
1	C	240	TYR
1	C	296	GLN
1	C	365	LEU

Sometimes sidechains can be flipped to improve hydrogen bonding and reduce clashes. All (2) such

sidechains are listed below:

Mol	Chain	Res	Type
1	B	260	ASN
1	C	82	GLN

### 5.3.3 RNA [i](#)

There are no RNA molecules in this entry.

## 5.4 Non-standard residues in protein, DNA, RNA chains [i](#)

There are no non-standard protein/DNA/RNA residues in this entry.

## 5.5 Carbohydrates [i](#)

There are no monosaccharides in this entry.

## 5.6 Ligand geometry [i](#)

3 ligands are modelled in this entry.

In the following table, the Counts columns list the number of bonds (or angles) for which Mogul statistics could be retrieved, the number of bonds (or angles) that are observed in the model and the number of bonds (or angles) that are defined in the Chemical Component Dictionary. The Link column lists molecule types, if any, to which the group is linked. The Z score for a bond length (or angle) is the number of standard deviations the observed value is removed from the expected value. A bond length (or angle) with  $|Z| > 2$  is considered an outlier worth inspection. RMSZ is the root-mean-square of all Z scores of the bond lengths (or angles).

Mol	Type	Chain	Res	Link	Bond lengths			Bond angles		
					Counts	RMSZ	# Z  > 2	Counts	RMSZ	# Z  > 2
2	PLP	B	400	1	15,15,16	1.14	1 (6%)	20,22,23	1.32	2 (10%)
3	GOL	A	500	-	5,5,5	0.26	0	5,5,5	0.72	0
2	PLP	A	400	1	15,15,16	0.95	1 (6%)	20,22,23	0.90	0

In the following table, the Chirals column lists the number of chiral outliers, the number of chiral centers analysed, the number of these observed in the model and the number defined in the Chemical Component Dictionary. Similar counts are reported in the Torsion and Rings columns. '-' means no outliers of that kind were identified.

Mol	Type	Chain	Res	Link	Chirals	Torsions	Rings
2	PLP	B	400	1	-	3/6/6/8	0/1/1/1
3	GOL	A	500	-	-	4/4/4/4	-
2	PLP	A	400	1	-	0/6/6/8	0/1/1/1

All (2) bond length outliers are listed below:

Mol	Chain	Res	Type	Atoms	Z	Observed(Å)	Ideal(Å)
2	B	400	PLP	C2-N1	2.58	1.38	1.33
2	A	400	PLP	C6-N1	2.19	1.39	1.34

All (2) bond angle outliers are listed below:

Mol	Chain	Res	Type	Atoms	Z	Observed(°)	Ideal(°)
2	B	400	PLP	C6-C5-C4	4.19	121.45	118.16
2	B	400	PLP	C5-C6-N1	-2.20	120.15	123.82

There are no chirality outliers.

All (7) torsion outliers are listed below:

Mol	Chain	Res	Type	Atoms
2	B	400	PLP	C5A-O4P-P-O2P
2	B	400	PLP	C5A-O4P-P-O3P
3	A	500	GOL	C1-C2-C3-O3
3	A	500	GOL	O1-C1-C2-C3
3	A	500	GOL	O2-C2-C3-O3
2	B	400	PLP	C5A-O4P-P-O1P
3	A	500	GOL	O1-C1-C2-O2

There are no ring outliers.

1 monomer is involved in 1 short contact:

Mol	Chain	Res	Type	Clashes	Symm-Clashes
3	A	500	GOL	1	0

## 5.7 Other polymers [\(i\)](#)

There are no such residues in this entry.

## 5.8 Polymer linkage issues

There are no chain breaks in this entry.



## 6 Fit of model and data

### 6.1 Protein, DNA and RNA chains

In the following table, the column labelled ‘#RSRZ > 2’ contains the number (and percentage) of RSRZ outliers, followed by percent RSRZ outliers for the chain as percentile scores relative to all X-ray entries and entries of similar resolution. The OWAB column contains the minimum, median, 95<sup>th</sup> percentile and maximum values of the occupancy-weighted average B-factor per residue. The column labelled ‘Q < 0.9’ lists the number of (and percentage) of residues with an average occupancy less than 0.9.

Mol	Chain	Analysed	<RSRZ>	#RSRZ>2	OWAB(Å <sup>2</sup> )	Q<0.9
1	A	363/377 (96%)	-0.40	4 (1%) 80 82	21, 28, 35, 48	0
1	B	362/377 (96%)	-0.31	3 (0%) 86 87	22, 28, 35, 45	0
1	C	362/377 (96%)	-0.17	14 (3%) 39 42	21, 29, 36, 52	0
All	All	1087/1131 (96%)	-0.29	21 (1%) 66 69	21, 28, 35, 52	0

All (21) RSRZ outliers are listed below:

Mol	Chain	Res	Type	RSRZ
1	A	8	THR	5.1
1	B	370	LEU	4.8
1	A	370	LEU	3.8
1	C	138	SER	3.8
1	C	8	THR	2.9
1	C	240	TYR	2.9
1	C	310	ALA	2.8
1	C	95	ALA	2.5
1	C	235	GLY	2.5
1	A	326	GLU	2.4
1	C	236	ASN	2.4
1	B	305	PHE	2.3
1	C	237	SER	2.3
1	C	51	LYS	2.3
1	C	45	ARG	2.3
1	C	129	GLY	2.3
1	A	286	GLN	2.2
1	C	314	ASP	2.1
1	B	352	GLU	2.1
1	C	127	LYS	2.1
1	C	286	GLN	2.1

## 6.2 Non-standard residues in protein, DNA, RNA chains [i](#)

There are no non-standard protein/DNA/RNA residues in this entry.

## 6.3 Carbohydrates [i](#)

There are no monosaccharides in this entry.

## 6.4 Ligands [i](#)

In the following table, the Atoms column lists the number of modelled atoms in the group and the number defined in the chemical component dictionary. The B-factors column lists the minimum, median, 95<sup>th</sup> percentile and maximum values of B factors of atoms in the group. The column labelled 'Q< 0.9' lists the number of atoms with occupancy less than 0.9.

Mol	Type	Chain	Res	Atoms	RSCC	RSR	B-factors(Å <sup>2</sup> )	Q<0.9
3	GOL	A	500	6/6	0.93	0.21	37,43,44,47	0
2	PLP	B	400	15/16	0.98	0.10	31,34,36,36	0
2	PLP	A	400	15/16	0.99	0.09	31,35,37,37	0

## 6.5 Other polymers [i](#)

There are no such residues in this entry.