



# Full wwPDB X-ray Structure Validation Report ⓘ

Oct 22, 2023 – 09:16 AM EDT

PDB ID : 3DSJ  
Title : Crystal Structure of Arabidopsis thaliana Allene Oxide Synthase Variant (F137L) (At-AOS(F137L), cytochrome P450 74A, CYP74A) Complexed with 13(S)-HOD at 1.60 Å Resolution  
Authors : Lee, D.S.; Nioche, P.; Raman, C.S.  
Deposited on : 2008-07-12  
Resolution : 1.60 Å (reported)

This is a Full wwPDB X-ray Structure Validation Report for a publicly released PDB entry.

We welcome your comments at [validation@mail.wwpdb.org](mailto:validation@mail.wwpdb.org)

A user guide is available at

<https://www.wwpdb.org/validation/2017/XrayValidationReportHelp>

with specific help available everywhere you see the ⓘ symbol.

The types of validation reports are described at

<http://www.wwpdb.org/validation/2017/FAQs#types>.

---

The following versions of software and data (see [references ⓘ](#)) were used in the production of this report:

MolProbity : 4.02b-467  
Mogul : 1.8.5 (274361), CSD as541be (2020)  
Xtrriage (Phenix) : 1.13  
EDS : 2.36  
buster-report : 1.1.7 (2018)  
Percentile statistics : 20191225.v01 (using entries in the PDB archive December 25th 2019)  
Refmac : 5.8.0158  
CCP4 : 7.0.044 (Gargrove)  
Ideal geometry (proteins) : Engh & Huber (2001)  
Ideal geometry (DNA, RNA) : Parkinson et al. (1996)  
Validation Pipeline (wwPDB-VP) : 2.36

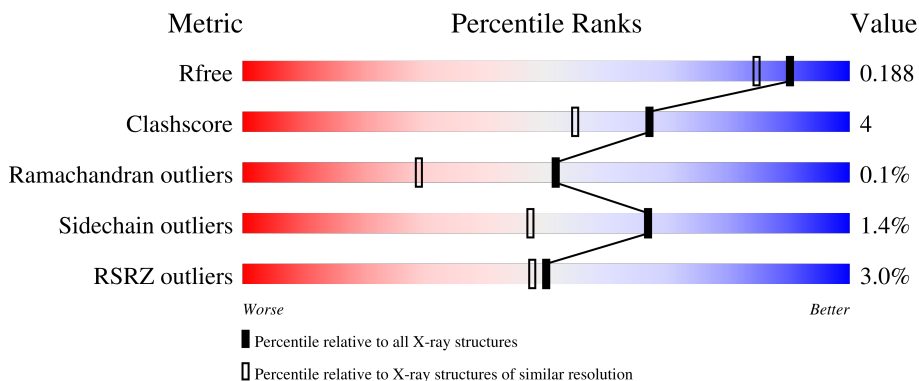
# 1 Overall quality at a glance

The following experimental techniques were used to determine the structure:

*X-RAY DIFFRACTION*

The reported resolution of this entry is 1.60 Å.

Percentile scores (ranging between 0-100) for global validation metrics of the entry are shown in the following graphic. The table shows the number of entries on which the scores are based.



Metric	Whole archive (#Entries)	Similar resolution (#Entries, resolution range(Å))
$R_{free}$	130704	3398 (1.60-1.60)
Clashscore	141614	3665 (1.60-1.60)
Ramachandran outliers	138981	3564 (1.60-1.60)
Sidechain outliers	138945	3563 (1.60-1.60)
RSRZ outliers	127900	3321 (1.60-1.60)

The table below summarises the geometric issues observed across the polymeric chains and their fit to the electron density. The red, orange, yellow and green segments of the lower bar indicate the fraction of residues that contain outliers for  $\geq 3$ , 2, 1 and 0 types of geometric quality criteria respectively. A grey segment represents the fraction of residues that are not modelled. The numeric value for each fraction is indicated below the corresponding segment, with a dot representing fractions  $\leq 5\%$ . The upper red bar (where present) indicates the fraction of residues that have poor fit to the electron density. The numeric value is given above the bar.

Mol	Chain	Length	Quality of chain
1	A	495	 88% 6% 6%
1	B	495	 86% 8% 6%

The following table lists non-polymeric compounds, carbohydrate monomers and non-standard residues in protein, DNA, RNA chains that are outliers for geometric or electron-density-fit criteria:

Mol	Type	Chain	Res	Chirality	Geometry	Clashes	Electron density
4	OCT	A	1	-	-	X	-
4	OCT	B	5	-	-	X	-

## 2 Entry composition [i](#)

There are 6 unique types of molecules in this entry. The entry contains 8485 atoms, of which 0 are hydrogens and 0 are deuteriums.

In the tables below, the ZeroOcc column contains the number of atoms modelled with zero occupancy, the AltConf column contains the number of residues with at least one atom in alternate conformation and the Trace column contains the number of residues modelled with at most 2 atoms.

- Molecule 1 is a protein called Cytochrome P450 74A, chloroplast.

Mol	Chain	Residues	Atoms					ZeroOcc	AltConf	Trace
			Total	C	N	O	S			
1	A	465	3778	2435	638	695	10	0	9	0
1	B	465	3746	2421	628	687	10	0	5	0

There are 22 discrepancies between the modelled and reference sequences:

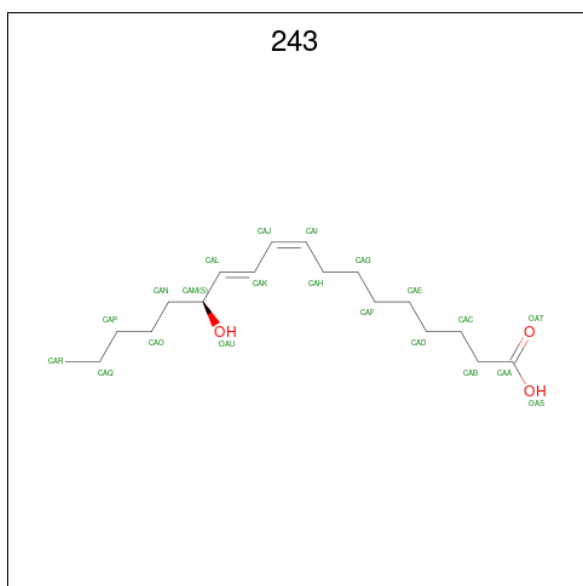
Chain	Residue	Modelled	Actual	Comment	Reference
A	28	MET	-	expression tag	UNP Q96242
A	29	ALA	-	expression tag	UNP Q96242
A	30	LYS	-	expression tag	UNP Q96242
A	31	LYS	-	expression tag	UNP Q96242
A	32	THR	-	expression tag	UNP Q96242
A	33	SER	-	expression tag	UNP Q96242
A	137	LEU	PHE	engineered mutation	UNP Q96242
A	519	HIS	-	expression tag	UNP Q96242
A	520	HIS	-	expression tag	UNP Q96242
A	521	HIS	-	expression tag	UNP Q96242
A	522	HIS	-	expression tag	UNP Q96242
B	28	MET	-	expression tag	UNP Q96242
B	29	ALA	-	expression tag	UNP Q96242
B	30	LYS	-	expression tag	UNP Q96242
B	31	LYS	-	expression tag	UNP Q96242
B	32	THR	-	expression tag	UNP Q96242
B	33	SER	-	expression tag	UNP Q96242
B	137	LEU	PHE	engineered mutation	UNP Q96242
B	519	HIS	-	expression tag	UNP Q96242
B	520	HIS	-	expression tag	UNP Q96242
B	521	HIS	-	expression tag	UNP Q96242
B	522	HIS	-	expression tag	UNP Q96242

- Molecule 2 is PROTOPORPHYRIN IX CONTAINING FE (three-letter code: HEM) (formula: C<sub>34</sub>H<sub>32</sub>FeN<sub>4</sub>O<sub>4</sub>).



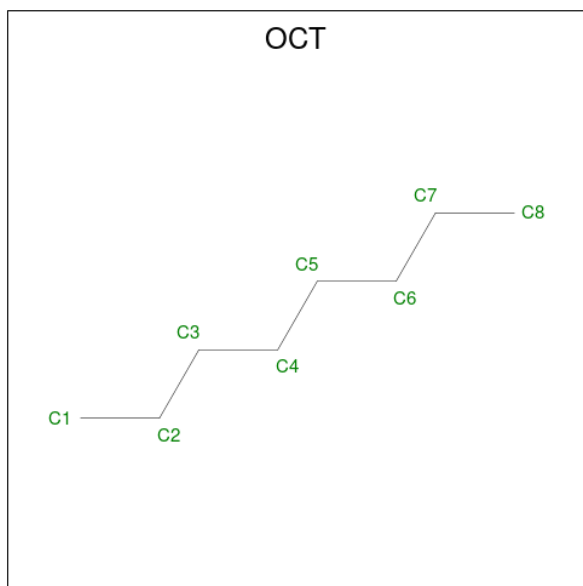
Mol	Chain	Residues	Atoms				ZeroOcc	AltConf	
2	A	1	Total	C	Fe	N	O	0	0
			43	34	1	4	4		
2	B	1	Total	C	Fe	N	O	0	0
			43	34	1	4	4		

- Molecule 3 is (9Z,11E,13S)-13-hydroxyoctadeca-9,11-dienoic acid (three-letter code: 243) (formula: C<sub>18</sub>H<sub>32</sub>O<sub>3</sub>).



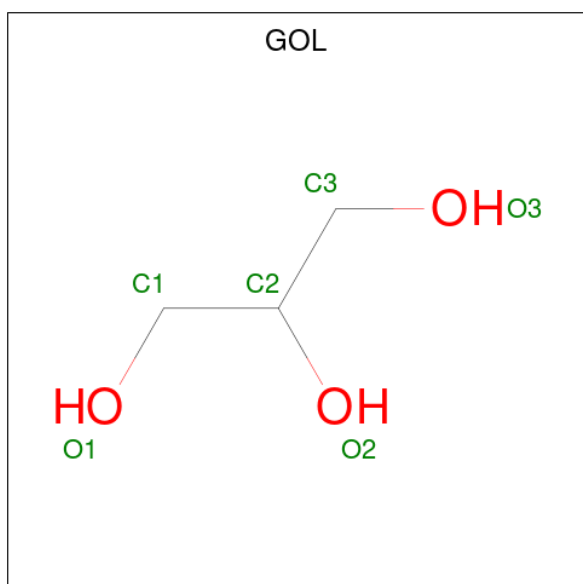
Mol	Chain	Residues	Atoms			ZeroOcc	AltConf
3	A	1	Total	C	O	0	0
			21	18	3		

- Molecule 4 is N-OCTANE (three-letter code: OCT) (formula:  $C_8H_{18}$ ).



Mol	Chain	Residues	Atoms	ZeroOcc	AltConf
4	A	1	Total C 8 8	0	0
4	A	1	Total C 8 8	0	0
4	A	1	Total C 8 8	0	0
4	B	1	Total C 8 8	0	0

- Molecule 5 is GLYCEROL (three-letter code: GOL) (formula:  $C_3H_8O_3$ ).



Mol	Chain	Residues	Atoms			ZeroOcc	AltConf
5	B	1	Total	C	O	0	0
			6	3	3		

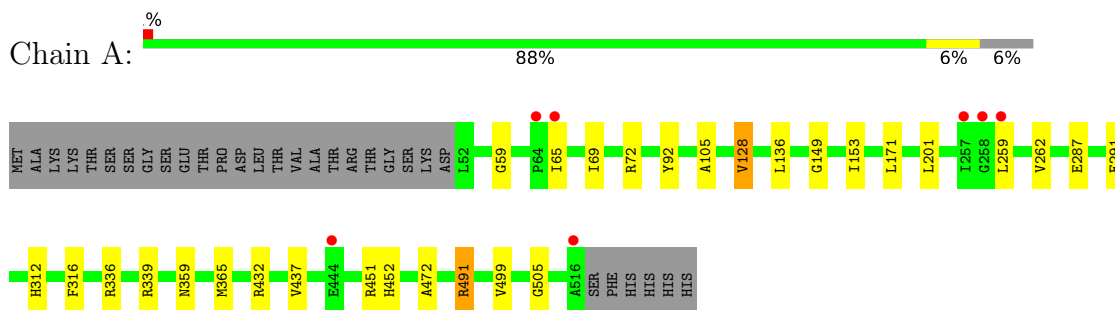
- Molecule 6 is water.

Mol	Chain	Residues	Atoms		ZeroOcc	AltConf
6	A	423	Total	O	0	0
			423	423		
6	B	393	Total	O	0	0
			393	393		

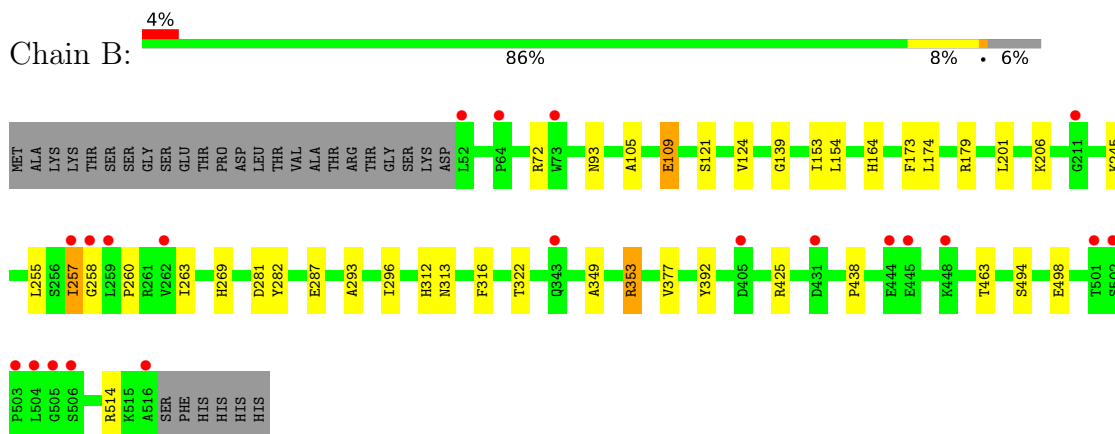
### 3 Residue-property plots [i](#)

These plots are drawn for all protein, RNA, DNA and oligosaccharide chains in the entry. The first graphic for a chain summarises the proportions of the various outlier classes displayed in the second graphic. The second graphic shows the sequence view annotated by issues in geometry and electron density. Residues are color-coded according to the number of geometric quality criteria for which they contain at least one outlier: green = 0, yellow = 1, orange = 2 and red = 3 or more. A red dot above a residue indicates a poor fit to the electron density ( $RSRZ > 2$ ). Stretches of 2 or more consecutive residues without any outlier are shown as a green connector. Residues present in the sample, but not in the model, are shown in grey.

- Molecule 1: Cytochrome P450 74A, chloroplast



- Molecule 1: Cytochrome P450 74A, chloroplast





## 4 Data and refinement statistics

Property	Value	Source
Space group	P 21 21 21	Depositor
Cell constants a, b, c, $\alpha$ , $\beta$ , $\gamma$	63.44Å 105.02Å 162.34Å 90.00° 90.00° 90.00°	Depositor
Resolution (Å)	88.04 – 1.60 31.13 – 1.60	Depositor EDS
% Data completeness (in resolution range)	99.5 (88.04-1.60) 99.5 (31.13-1.60)	Depositor EDS
$R_{merge}$	(Not available)	Depositor
$R_{sym}$	(Not available)	Depositor
$\langle I/\sigma(I) \rangle$ <sup>1</sup>	2.14 (at 1.60Å)	Xtrriage
Refinement program	REFMAC 5.2.0019	Depositor
R, $R_{free}$	0.169 , 0.190 0.169 , 0.188	Depositor DCC
$R_{free}$ test set	7208 reflections (5.02%)	wwPDB-VP
Wilson B-factor (Å <sup>2</sup> )	18.2	Xtrriage
Anisotropy	0.215	Xtrriage
Bulk solvent $k_{sol}$ (e/Å <sup>3</sup> ), $B_{sol}$ (Å <sup>2</sup> )	0.38 , 49.5	EDS
L-test for twinning <sup>2</sup>	$\langle  L  \rangle = 0.49$ , $\langle L^2 \rangle = 0.33$	Xtrriage
Estimated twinning fraction	No twinning to report.	Xtrriage
$F_o, F_c$ correlation	0.96	EDS
Total number of atoms	8485	wwPDB-VP
Average B, all atoms (Å <sup>2</sup> )	20.0	wwPDB-VP

Xtrriage's analysis on translational NCS is as follows: *The largest off-origin peak in the Patterson function is 3.43% of the height of the origin peak. No significant pseudotranslation is detected.*

<sup>1</sup>Intensities estimated from amplitudes.

<sup>2</sup>Theoretical values of  $\langle |L| \rangle$ ,  $\langle L^2 \rangle$  for acentric reflections are 0.5, 0.333 respectively for untwinned datasets, and 0.375, 0.2 for perfectly twinned datasets.

## 5 Model quality [i](#)

### 5.1 Standard geometry [i](#)

Bond lengths and bond angles in the following residue types are not validated in this section: HEM, OCT, 243, GOL

The Z score for a bond length (or angle) is the number of standard deviations the observed value is removed from the expected value. A bond length (or angle) with  $|Z| > 5$  is considered an outlier worth inspection. RMSZ is the root-mean-square of all Z scores of the bond lengths (or angles).

Mol	Chain	Bond lengths		Bond angles	
		RMSZ	# Z  >5	RMSZ	# Z  >5
1	A	0.51	0/3870	0.60	0/5232
1	B	0.48	0/3838	0.59	1/5192 (0.0%)
All	All	0.50	0/7708	0.59	1/10424 (0.0%)

There are no bond length outliers.

All (1) bond angle outliers are listed below:

Mol	Chain	Res	Type	Atoms	Z	Observed(°)	Ideal(°)
1	B	353	ARG	NE-CZ-NH1	5.22	122.91	120.30

There are no chirality outliers.

There are no planarity outliers.

### 5.2 Too-close contacts [i](#)

In the following table, the Non-H and H(model) columns list the number of non-hydrogen atoms and hydrogen atoms in the chain respectively. The H(added) column lists the number of hydrogen atoms added and optimized by MolProbity. The Clashes column lists the number of clashes within the asymmetric unit, whereas Symm-Clashes lists symmetry-related clashes.

Mol	Chain	Non-H	H(model)	H(added)	Clashes	Symm-Clashes
1	A	3778	0	3773	25	0
1	B	3746	0	3749	33	0
2	A	43	0	30	2	0
2	B	43	0	30	3	0
3	A	21	0	31	0	0
4	A	24	0	54	4	22
4	B	8	0	18	0	22
5	B	6	0	8	0	0

*Continued on next page...*

Continued from previous page...

Mol	Chain	Non-H	H(model)	H(added)	Clashes	Symm-Clashes
6	A	423	0	0	8	0
6	B	393	0	0	7	0
All	All	8485	0	7693	60	22

The all-atom clashscore is defined as the number of clashes found per 1000 atoms (including hydrogen atoms). The all-atom clashscore for this structure is 4.

All (60) close contacts within the same asymmetric unit are listed below, sorted by their clash magnitude.

Atom-1	Atom-2	Interatomic distance (Å)	Clash overlap (Å)
4:A:1:OCT:C4	4:A:1:OCT:C5	1.82	1.50
1:A:432[A]:ARG:NH1	1:A:437:VAL:HG21	1.93	0.82
1:B:109:GLU:OE1	6:B:958:HOH:O	1.97	0.81
1:B:93[B]:ASN:ND2	6:B:758:HOH:O	2.14	0.80
1:B:72:ARG:HH22	1:B:105:ALA:HB2	1.47	0.77
4:A:1:OCT:C4	4:A:1:OCT:C6	2.67	0.73
1:B:425:ARG:NH2	6:B:736:HOH:O	2.19	0.72
1:A:432[A]:ARG:HH11	1:A:437:VAL:HG21	1.55	0.69
1:B:255:LEU:O	1:B:269:HIS:HE1	1.74	0.69
1:B:154:LEU:H	1:B:313:ASN:HD21	1.40	0.69
1:A:65:ILE:O	1:A:69:ILE:HG12	1.93	0.69
1:B:164:HIS:HE1	2:B:600:HEM:O2D	1.78	0.67
1:B:282:TYR:OH	1:B:312:HIS:HD2	1.78	0.67
1:A:291:GLU:HG3	6:A:976:HOH:O	1.96	0.66
4:A:1:OCT:C5	4:A:1:OCT:C3	2.72	0.64
1:B:287[A]:GLU:HG3	6:B:942:HOH:O	1.96	0.64
1:B:349:ALA:O	1:B:353:ARG:HG3	1.96	0.64
1:A:339:ARG:HH21	1:A:499:VAL:HG21	1.62	0.64
1:A:72:ARG:HH12	1:A:105:ALA:HB2	1.65	0.61
1:B:72:ARG:NH2	1:B:105:ALA:HB2	2.14	0.61
1:A:336:ARG:HG3	6:A:965:HOH:O	2.01	0.61
1:B:105:ALA:HB3	6:B:936:HOH:O	2.03	0.58
1:B:173:PHE:HD2	1:B:296[A]:ILE:CD1	2.17	0.57
1:B:173:PHE:HD2	1:B:296[A]:ILE:HD12	1.70	0.56
1:A:432[A]:ARG:HH11	1:A:432[A]:ARG:HB2	1.73	0.53
1:B:494:SER:OG	1:B:514:ARG:HD2	2.09	0.53
1:B:260:PRO:HD2	1:B:263:ILE:HD12	1.90	0.52
1:A:149:GLY:HA3	1:A:312:HIS:CE1	2.46	0.51
1:A:499:VAL:HG22	6:B:762:HOH:O	2.11	0.51
1:B:154:LEU:H	1:B:313:ASN:ND2	2.08	0.50
1:A:336:ARG:CG	6:A:965:HOH:O	2.58	0.49

Continued on next page...

*Continued from previous page...*

Atom-1	Atom-2	Interatomic distance (Å)	Clash overlap (Å)
1:B:121:SER:O	1:B:124:VAL:HG12	2.11	0.49
1:B:164:HIS:HD2	6:B:652:HOH:O	1.96	0.48
1:B:173:PHE:CD2	1:B:296[A]:ILE:HD12	2.47	0.48
1:B:377[A]:VAL:HG12	1:B:438:PRO:HB3	1.94	0.48
1:B:322:THR:HG23	2:B:600:HEM:HMC1	1.95	0.47
1:A:59:GLY:HA2	1:A:92:TYR:CZ	2.49	0.47
1:A:491:ARG:HD2	6:A:831:HOH:O	2.15	0.47
1:A:339:ARG:NH2	1:A:499:VAL:HG21	2.29	0.47
1:A:499:VAL:CG2	1:B:498:GLU:OE2	2.63	0.46
1:A:472:ALA:HB3	2:A:600:HEM:HBC2	1.97	0.46
1:A:171:LEU:HB3	2:A:600:HEM:HBC1	1.97	0.46
2:B:600:HEM:HHD	2:B:600:HEM:HBC2	1.98	0.46
1:B:174:LEU:HD13	1:B:296[B]:ILE:HG13	1.98	0.44
1:A:499:VAL:HG22	1:B:498:GLU:OE2	2.17	0.44
1:A:365:MET:HG3	6:A:696:HOH:O	2.18	0.44
1:A:499:VAL:HG23	1:B:206:LYS:NZ	2.34	0.43
1:A:153:ILE:HG21	1:A:316:PHE:CG	2.54	0.43
1:A:505:GLY:HA3	6:A:682:HOH:O	2.18	0.43
1:B:255:LEU:O	1:B:269:HIS:CE1	2.64	0.42
1:B:257:ILE:HG22	1:B:258:GLY:H	1.85	0.42
1:A:128:VAL:HG13	6:A:765:HOH:O	2.20	0.42
1:A:451:ARG:CZ	1:A:452:HIS:CE1	3.03	0.41
1:B:282:TYR:OH	1:B:312:HIS:CD2	2.67	0.41
4:A:1:OCT:C4	4:A:1:OCT:H62	2.50	0.41
1:B:139:GLY:HA2	1:B:392:TYR:CD2	2.56	0.41
1:B:245:LYS:HD3	1:B:281:ASP:OD2	2.21	0.41
1:A:262:VAL:HG13	6:A:926:HOH:O	2.20	0.40
1:B:153:ILE:HG21	1:B:316:PHE:CG	2.56	0.40
1:B:293:ALA:HB1	1:B:296[A]:ILE:CG2	2.51	0.40

All (22) symmetry-related close contacts are listed below. The label for Atom-2 includes the symmetry operator and encoded unit-cell translations to be applied.

Atom-1	Atom-2	Interatomic distance (Å)	Clash overlap (Å)
4:A:1:OCT:C6	4:B:5:OCT:C3[4_455]	0.73	1.47
4:A:1:OCT:C2	4:B:5:OCT:C7[4_455]	0.88	1.32
4:A:1:OCT:C4	4:B:5:OCT:C5[4_455]	0.90	1.30
4:A:1:OCT:C5	4:B:5:OCT:C4[4_455]	0.94	1.26
4:A:1:OCT:C3	4:B:5:OCT:C6[4_455]	0.99	1.21
4:A:1:OCT:C2	4:B:5:OCT:C6[4_455]	1.02	1.18

*Continued on next page...*

Continued from previous page...

Atom-1	Atom-2	Interatomic distance (Å)	Clash overlap (Å)
4:A:1:OCT:C1	4:B:5:OCT:C8[4_455]	1.13	1.07
4:A:1:OCT:C7	4:B:5:OCT:C2[4_455]	1.25	0.95
4:A:1:OCT:C8	4:B:5:OCT:C1[4_455]	1.29	0.91
4:A:1:OCT:C7	4:B:5:OCT:C3[4_455]	1.29	0.91
4:A:1:OCT:C4	4:B:5:OCT:C4[4_455]	1.30	0.90
4:A:1:OCT:C5	4:B:5:OCT:C3[4_455]	1.60	0.60
4:A:1:OCT:C5	4:B:5:OCT:C5[4_455]	1.67	0.53
4:A:1:OCT:C6	4:B:5:OCT:C2[4_455]	1.68	0.52
4:A:1:OCT:C2	4:B:5:OCT:C8[4_455]	1.79	0.41
4:A:1:OCT:C3	4:B:5:OCT:C5[4_455]	1.80	0.40
4:A:1:OCT:C4	4:B:5:OCT:C6[4_455]	1.81	0.39
4:A:1:OCT:C3	4:B:5:OCT:C7[4_455]	1.86	0.34
4:A:1:OCT:C7	4:B:5:OCT:C1[4_455]	1.88	0.32
4:A:1:OCT:C6	4:B:5:OCT:C4[4_455]	1.88	0.32
4:A:1:OCT:C1	4:B:5:OCT:C7[4_455]	1.89	0.31
4:A:1:OCT:C8	4:B:5:OCT:C2[4_455]	2.09	0.11

## 5.3 Torsion angles [i](#)

### 5.3.1 Protein backbone [i](#)

In the following table, the Percentiles column shows the percent Ramachandran outliers of the chain as a percentile score with respect to all X-ray entries followed by that with respect to entries of similar resolution.

The Analysed column shows the number of residues for which the backbone conformation was analysed, and the total number of residues.

Mol	Chain	Analysed	Favoured	Allowed	Outliers	Percentiles	
1	A	472/495 (95%)	464 (98%)	8 (2%)	0	100	100
1	B	468/495 (94%)	460 (98%)	7 (2%)	1 (0%)	47	26
All	All	940/990 (95%)	924 (98%)	15 (2%)	1 (0%)	51	29

All (1) Ramachandran outliers are listed below:

Mol	Chain	Res	Type
1	B	257	ILE

### 5.3.2 Protein sidechains

In the following table, the Percentiles column shows the percent sidechain outliers of the chain as a percentile score with respect to all X-ray entries followed by that with respect to entries of similar resolution.

The Analysed column shows the number of residues for which the sidechain conformation was analysed, and the total number of residues.

Mol	Chain	Analysed	Rotameric	Outliers	Percentiles	
1	A	409/426 (96%)	401 (98%)	8 (2%)	55	31
1	B	405/426 (95%)	401 (99%)	4 (1%)	76	61
All	All	814/852 (96%)	802 (98%)	12 (2%)	67	44

All (12) residues with a non-rotameric sidechain are listed below:

Mol	Chain	Res	Type
1	A	128	VAL
1	A	136	LEU
1	A	201	LEU
1	A	259	LEU
1	A	287[A]	GLU
1	A	287[B]	GLU
1	A	359	ASN
1	A	491	ARG
1	B	109	GLU
1	B	179	ARG
1	B	201	LEU
1	B	463	THR

Sometimes sidechains can be flipped to improve hydrogen bonding and reduce clashes. All (14) such sidechains are listed below:

Mol	Chain	Res	Type
1	A	100	ASN
1	A	169	ASN
1	A	180	ASN
1	A	332	ASN
1	A	343	GLN
1	A	359	ASN
1	A	452	HIS
1	B	60	ASN
1	B	100	ASN
1	B	164	HIS

*Continued on next page...*

Continued from previous page...

Mol	Chain	Res	Type
1	B	269	HIS
1	B	312	HIS
1	B	313	ASN
1	B	332	ASN

### 5.3.3 RNA [i](#)

There are no RNA molecules in this entry.

### 5.4 Non-standard residues in protein, DNA, RNA chains [i](#)

There are no non-standard protein/DNA/RNA residues in this entry.

### 5.5 Carbohydrates [i](#)

There are no monosaccharides in this entry.

### 5.6 Ligand geometry [i](#)

8 ligands are modelled in this entry.

In the following table, the Counts columns list the number of bonds (or angles) for which Mogul statistics could be retrieved, the number of bonds (or angles) that are observed in the model and the number of bonds (or angles) that are defined in the Chemical Component Dictionary. The Link column lists molecule types, if any, to which the group is linked. The Z score for a bond length (or angle) is the number of standard deviations the observed value is removed from the expected value. A bond length (or angle) with  $|Z| > 2$  is considered an outlier worth inspection. RMSZ is the root-mean-square of all Z scores of the bond lengths (or angles).

Mol	Type	Chain	Res	Link	Bond lengths			Bond angles		
					Counts	RMSZ	# Z  > 2	Counts	RMSZ	# Z  > 2
4	OCT	A	1	-	7,7,7	2.42	3 (42%)	6,6,6	1.03	1 (16%)
5	GOL	B	1	-	5,5,5	0.35	0	5,5,5	0.32	0
2	HEM	B	600	1	41,50,50	1.80	7 (17%)	45,82,82	2.02	12 (26%)
4	OCT	A	2	-	7,7,7	0.22	0	6,6,6	0.50	0
2	HEM	A	600	1	41,50,50	1.79	6 (14%)	45,82,82	1.94	11 (24%)
3	243	A	601	-	20,20,20	0.94	1 (5%)	21,21,21	0.95	1 (4%)
4	OCT	B	5	-	7,7,7	1.16	1 (14%)	6,6,6	0.68	0
4	OCT	A	3	-	7,7,7	0.27	0	6,6,6	0.52	0

In the following table, the Chirals column lists the number of chiral outliers, the number of chiral centers analysed, the number of these observed in the model and the number defined in the Chemical Component Dictionary. Similar counts are reported in the Torsion and Rings columns. '-' means no outliers of that kind were identified.

Mol	Type	Chain	Res	Link	Chirals	Torsions	Rings
4	OCT	A	1	-	-	3/5/5/5	-
5	GOL	B	1	-	-	0/4/4/4	-
2	HEM	B	600	1	-	2/12/54/54	-
4	OCT	A	2	-	-	3/5/5/5	-
2	HEM	A	600	1	-	2/12/54/54	-
3	243	A	601	-	-	3/19/19/19	-
4	OCT	B	5	-	-	2/5/5/5	-
4	OCT	A	3	-	-	3/5/5/5	-

All (18) bond length outliers are listed below:

Mol	Chain	Res	Type	Atoms	Z	Observed(Å)	Ideal(Å)
2	B	600	HEM	C3D-C2D	6.31	1.50	1.36
2	A	600	HEM	C3D-C2D	6.18	1.49	1.36
4	A	1	OCT	C5-C4	5.43	1.82	1.51
2	A	600	HEM	C3C-C2C	-4.45	1.34	1.40
2	B	600	HEM	C3C-CAC	3.95	1.55	1.47
2	B	600	HEM	C3C-C2C	-3.88	1.35	1.40
2	A	600	HEM	C3C-CAC	3.76	1.55	1.47
3	A	601	243	CAK-CAJ	-3.26	1.34	1.44
2	A	600	HEM	CAB-C3B	2.74	1.54	1.47
4	B	5	OCT	C5-C4	2.43	1.65	1.51
2	B	600	HEM	FE-NB	2.38	2.08	1.96
2	B	600	HEM	CAB-C3B	2.31	1.53	1.47
4	A	1	OCT	C2-C3	2.21	1.67	1.51
2	B	600	HEM	FE-ND	2.18	2.07	1.96
2	A	600	HEM	CAA-C2A	2.13	1.55	1.52
2	B	600	HEM	CAA-C2A	2.13	1.55	1.52
2	A	600	HEM	FE-NB	2.07	2.07	1.96
4	A	1	OCT	C7-C6	2.05	1.66	1.51

All (25) bond angle outliers are listed below:

Mol	Chain	Res	Type	Atoms	Z	Observed(°)	Ideal(°)
2	B	600	HEM	C4D-ND-C1D	6.21	111.49	105.07
2	A	600	HEM	C4D-ND-C1D	5.28	110.53	105.07
2	B	600	HEM	C1B-NB-C4B	4.96	110.19	105.07

*Continued on next page...*



*Continued from previous page...*

Mol	Chain	Res	Type	Atoms	Z	Observed(°)	Ideal(°)
2	A	600	HEM	C1B-NB-C4B	4.28	109.49	105.07
2	A	600	HEM	C4B-CHC-C1C	4.05	127.90	122.56
2	B	600	HEM	C4B-CHC-C1C	3.90	127.70	122.56
2	A	600	HEM	CHD-C1D-ND	3.47	128.20	124.43
2	A	600	HEM	CBD-CAD-C3D	-3.37	103.27	112.63
2	B	600	HEM	CHD-C1D-ND	3.10	127.80	124.43
2	A	600	HEM	CHA-C4D-ND	2.90	127.96	124.38
2	A	600	HEM	C3B-C2B-C1B	2.89	108.63	106.49
2	A	600	HEM	CMA-C3A-C4A	-2.86	124.07	128.46
2	B	600	HEM	CHA-C4D-ND	2.84	127.89	124.38
2	A	600	HEM	CAD-C3D-C4D	2.73	129.42	124.66
2	B	600	HEM	C4C-CHD-C1D	2.70	126.12	122.56
2	B	600	HEM	CBD-CAD-C3D	-2.66	105.24	112.63
2	B	600	HEM	C2B-C1B-NB	-2.47	106.91	109.84
2	A	600	HEM	C2B-C1B-NB	-2.46	106.93	109.84
2	B	600	HEM	C3B-C2B-C1B	2.40	108.26	106.49
2	B	600	HEM	CAD-C3D-C4D	2.38	128.81	124.66
2	A	600	HEM	CHC-C4B-NB	2.30	126.93	124.43
4	A	1	OCT	C6-C5-C4	-2.13	103.60	114.42
2	B	600	HEM	CMD-C2D-C1D	2.11	128.26	125.04
3	A	601	243	OAT-CAA-CAB	-2.09	116.37	123.08
2	B	600	HEM	O2A-CGA-CBA	2.00	120.47	114.03

There are no chirality outliers.

All (18) torsion outliers are listed below:

Mol	Chain	Res	Type	Atoms
4	A	3	OCT	C2-C3-C4-C5
4	A	1	OCT	C4-C5-C6-C7
4	B	5	OCT	C2-C3-C4-C5
3	A	601	243	CAK-CAL-CAM-CAN
4	A	2	OCT	C4-C5-C6-C7
4	B	5	OCT	C4-C5-C6-C7
4	A	1	OCT	C2-C3-C4-C5
4	A	2	OCT	C1-C2-C3-C4
4	A	3	OCT	C1-C2-C3-C4
2	B	600	HEM	CAA-CBA-CGA-O2A
3	A	601	243	OAT-CAA-CAB-CAC
4	A	2	OCT	C3-C4-C5-C6
2	B	600	HEM	CAA-CBA-CGA-O1A
4	A	3	OCT	C5-C6-C7-C8
2	A	600	HEM	CAA-CBA-CGA-O1A

*Continued on next page...*

*Continued from previous page...*

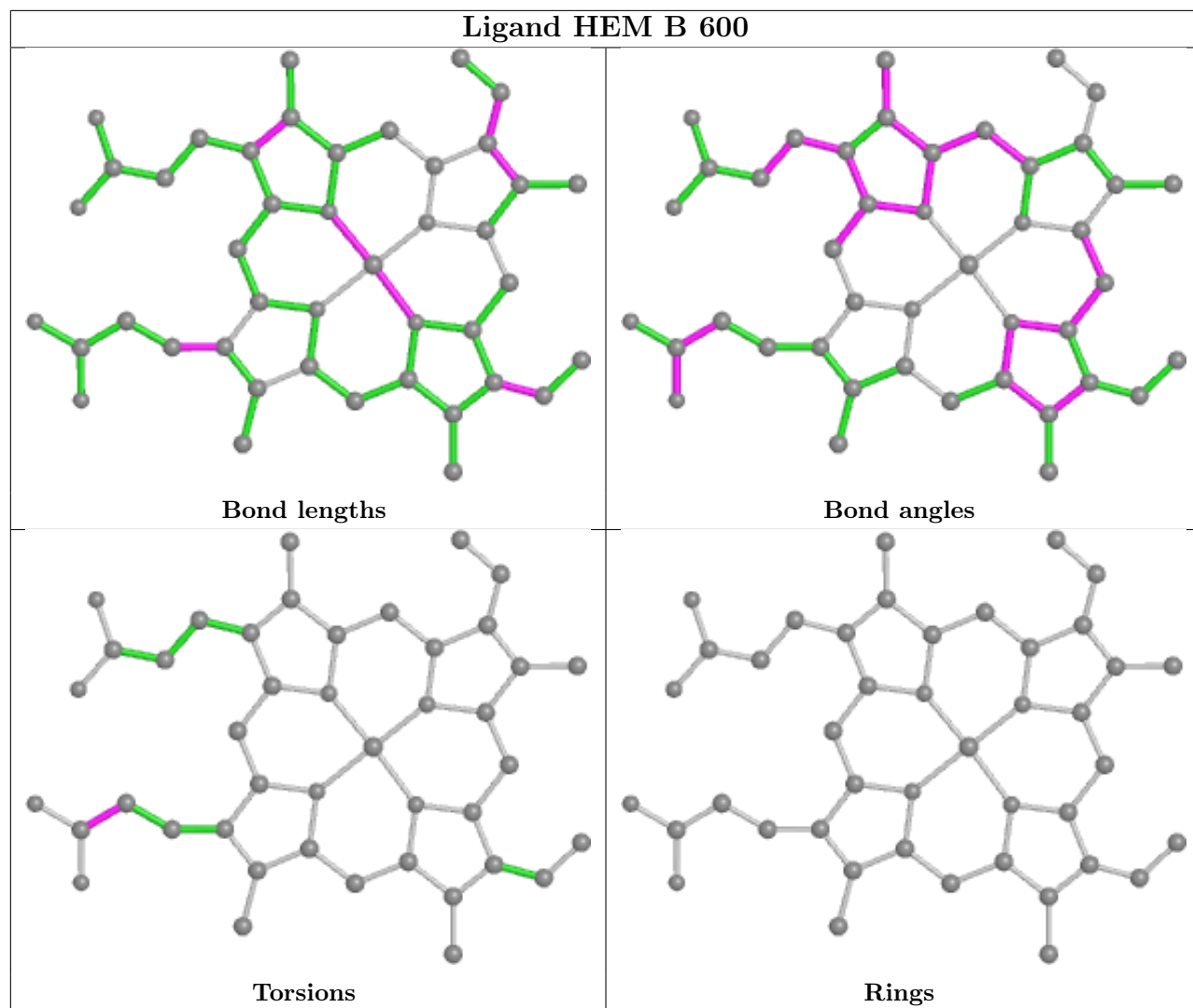
Mol	Chain	Res	Type	Atoms
2	A	600	HEM	CAA-CBA-CGA-O2A
3	A	601	243	OAS-CAA-CAB-CAC
4	A	1	OCT	C5-C6-C7-C8

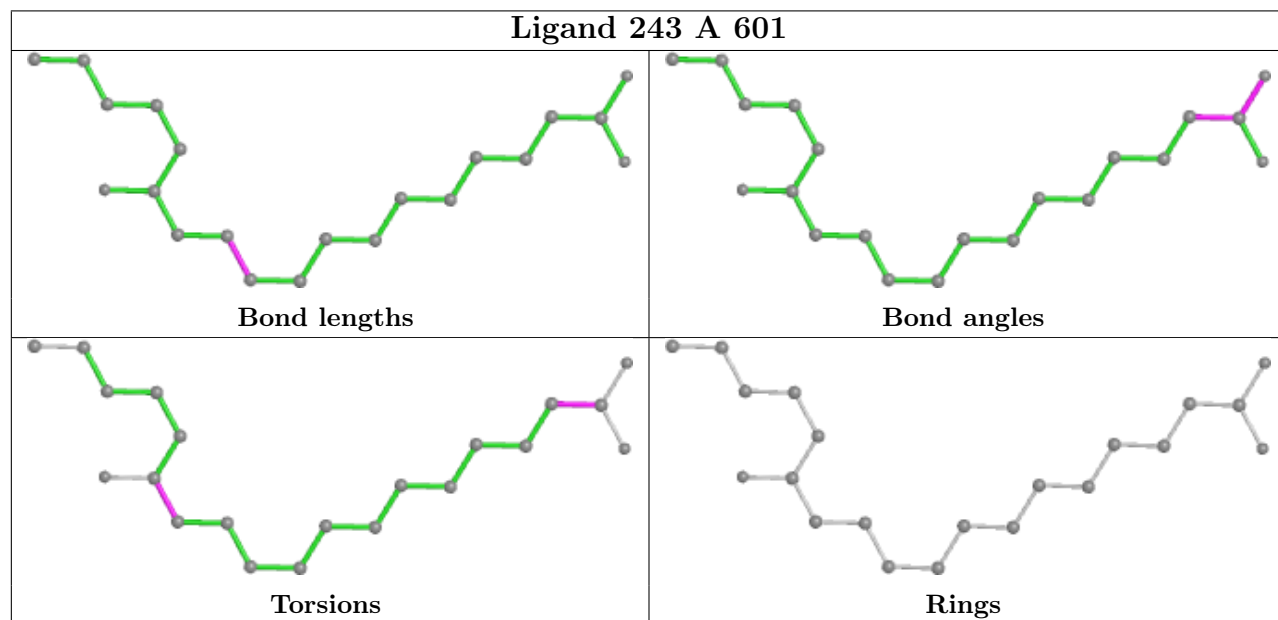
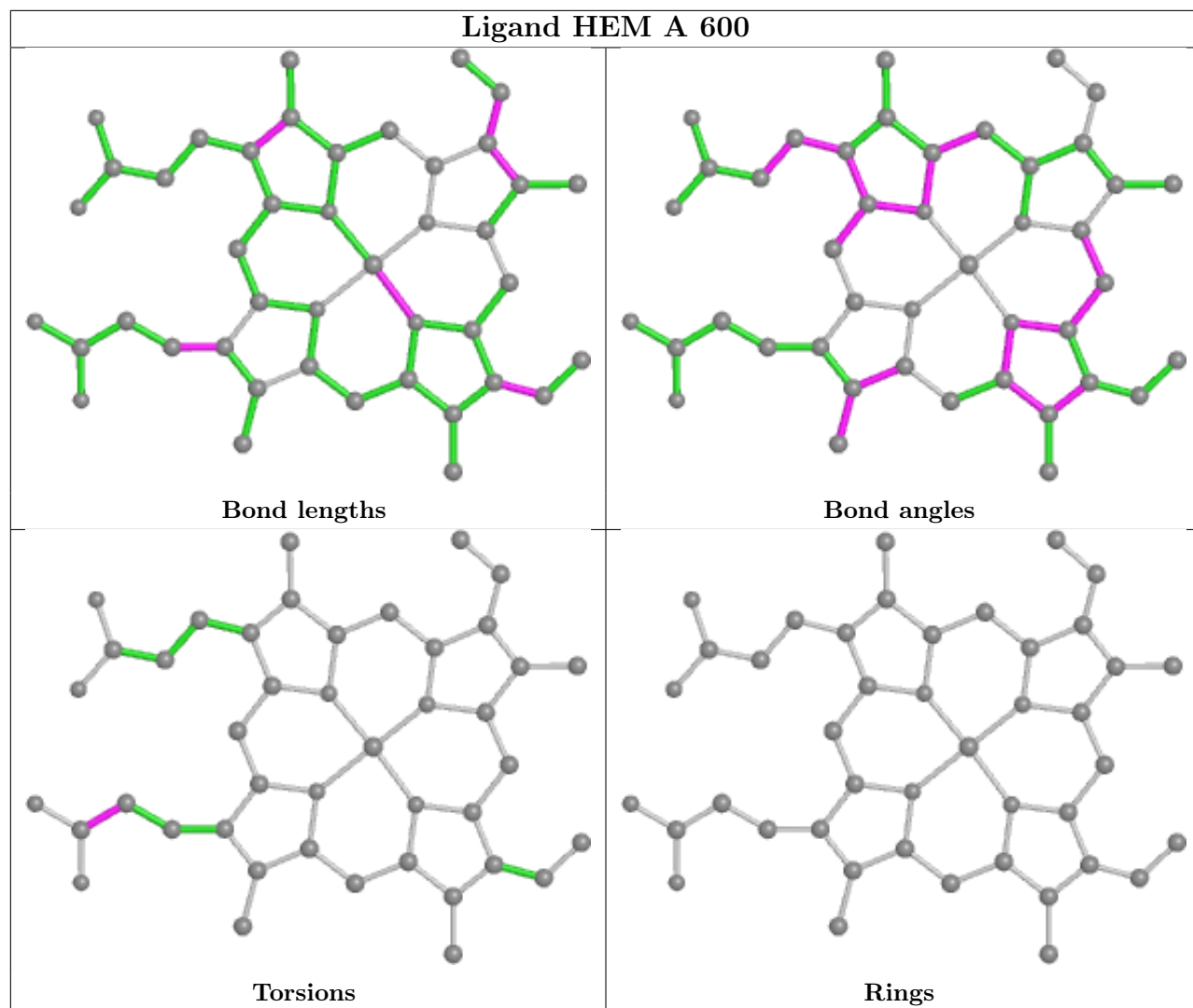
There are no ring outliers.

4 monomers are involved in 31 short contacts:

Mol	Chain	Res	Type	Clashes	Symm-Clashes
4	A	1	OCT	4	22
2	B	600	HEM	3	0
2	A	600	HEM	2	0
4	B	5	OCT	0	22

The following is a two-dimensional graphical depiction of Mogul quality analysis of bond lengths, bond angles, torsion angles, and ring geometry for all instances of the Ligand of Interest. In addition, ligands with molecular weight > 250 and outliers as shown on the validation Tables will also be included. For torsion angles, if less than 5% of the Mogul distribution of torsion angles is within 10 degrees of the torsion angle in question, then that torsion angle is considered an outlier. Any bond that is central to one or more torsion angles identified as an outlier by Mogul will be highlighted in the graph. For rings, the root-mean-square deviation (RMSD) between the ring in question and similar rings identified by Mogul is calculated over all ring torsion angles. If the average RMSD is greater than 60 degrees and the minimal RMSD between the ring in question and any Mogul-identified rings is also greater than 60 degrees, then that ring is considered an outlier. The outliers are highlighted in purple. The color gray indicates Mogul did not find sufficient equivalents in the CSD to analyse the geometry.





## 5.7 Other polymers [i](#)

There are no such residues in this entry.

## 5.8 Polymer linkage issues [i](#)

There are no chain breaks in this entry.

## 6 Fit of model and data

### 6.1 Protein, DNA and RNA chains

In the following table, the column labelled ‘#RSRZ > 2’ contains the number (and percentage) of RSRZ outliers, followed by percent RSRZ outliers for the chain as percentile scores relative to all X-ray entries and entries of similar resolution. The OWAB column contains the minimum, median, 95<sup>th</sup> percentile and maximum values of the occupancy-weighted average B-factor per residue. The column labelled ‘Q < 0.9’ lists the number of (and percentage) of residues with an average occupancy less than 0.9.

Mol	Chain	Analysed	<RSRZ>	#RSRZ>2	OWAB(Å <sup>2</sup> )	Q<0.9
1	A	465/495 (93%)	-0.13	7 (1%) 73 73	13, 17, 26, 34	0
1	B	465/495 (93%)	0.03	21 (4%) 33 30	14, 18, 29, 40	0
All	All	930/990 (93%)	-0.05	28 (3%) 50 48	13, 18, 27, 40	0

All (28) RSRZ outliers are listed below:

Mol	Chain	Res	Type	RSRZ
1	B	504	LEU	9.2
1	B	258	GLY	6.8
1	B	503	PRO	6.4
1	B	259	LEU	5.0
1	B	516	ALA	4.6
1	B	502	SER	3.9
1	B	448	LYS	3.9
1	B	257	ILE	3.7
1	B	262	VAL	3.5
1	B	505	GLY	3.4
1	A	516	ALA	3.0
1	B	444	GLU	2.9
1	A	257[A]	ILE	2.9
1	B	445	GLU	2.9
1	A	65	ILE	2.7
1	A	64	PRO	2.7
1	B	73	TRP	2.4
1	A	258	GLY	2.4
1	B	431	ASP	2.4
1	B	52	LEU	2.3
1	B	506	SER	2.3
1	B	501	THR	2.3
1	A	444	GLU	2.3
1	B	211	GLY	2.2

*Continued on next page...*

*Continued from previous page...*

Mol	Chain	Res	Type	RSRZ
1	A	259	LEU	2.2
1	B	405	ASP	2.2
1	B	343	GLN	2.1
1	B	64	PRO	2.0

## 6.2 Non-standard residues in protein, DNA, RNA chains [i](#)

There are no non-standard protein/DNA/RNA residues in this entry.

## 6.3 Carbohydrates [i](#)

There are no monosaccharides in this entry.

## 6.4 Ligands [i](#)

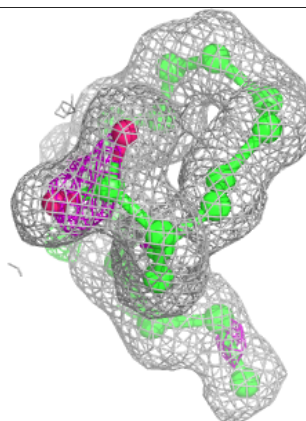
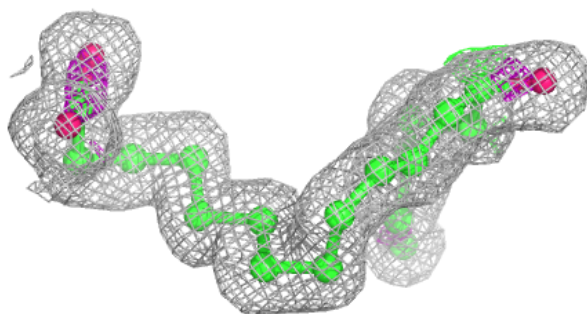
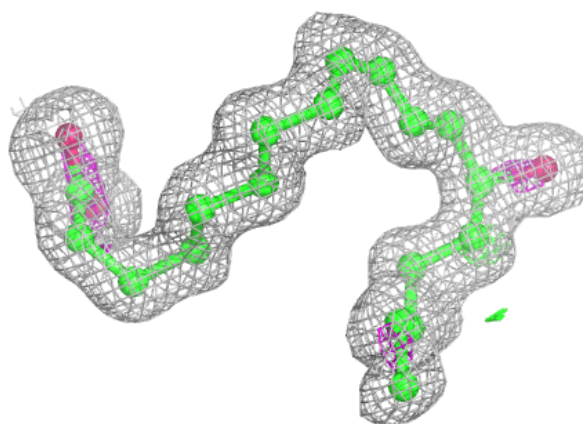
In the following table, the Atoms column lists the number of modelled atoms in the group and the number defined in the chemical component dictionary. The B-factors column lists the minimum, median, 95<sup>th</sup> percentile and maximum values of B factors of atoms in the group. The column labelled 'Q < 0.9' lists the number of atoms with occupancy less than 0.9.

Mol	Type	Chain	Res	Atoms	RSCC	RSR	B-factors(Å <sup>2</sup> )	Q < 0.9
4	OCT	A	3	8/8	0.36	0.27	49,52,56,57	0
4	OCT	A	2	8/8	0.82	0.13	46,46,47,47	0
4	OCT	A	1	8/8	0.85	0.33	50,52,54,54	0
4	OCT	B	5	8/8	0.85	0.40	40,41,41,42	0
3	243	A	601	21/21	0.94	0.10	13,18,21,24	0
5	GOL	B	1	6/6	0.96	0.09	17,19,20,22	0
2	HEM	A	600	43/43	0.98	0.06	10,12,14,20	0
2	HEM	B	600	43/43	0.98	0.07	10,12,14,23	0

The following is a graphical depiction of the model fit to experimental electron density of all instances of the Ligand of Interest. In addition, ligands with molecular weight > 250 and outliers as shown on the geometry validation Tables will also be included. Each fit is shown from different orientation to approximate a three-dimensional view.

**Electron density around 243 A 601:**

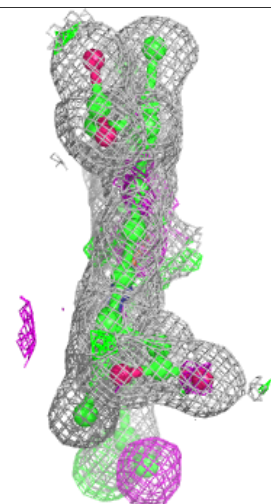
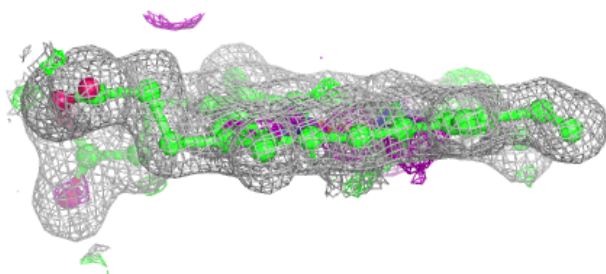
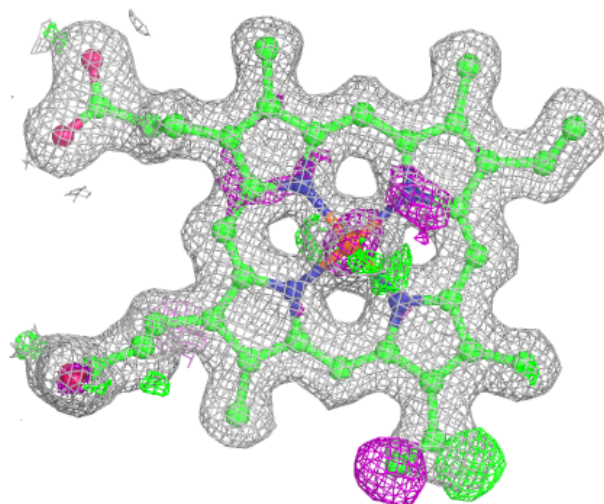
$2mF_o-DF_c$  (at 0.7 rmsd) in gray  
 $mF_o-DF_c$  (at 3 rmsd) in purple (negative)  
and green (positive)

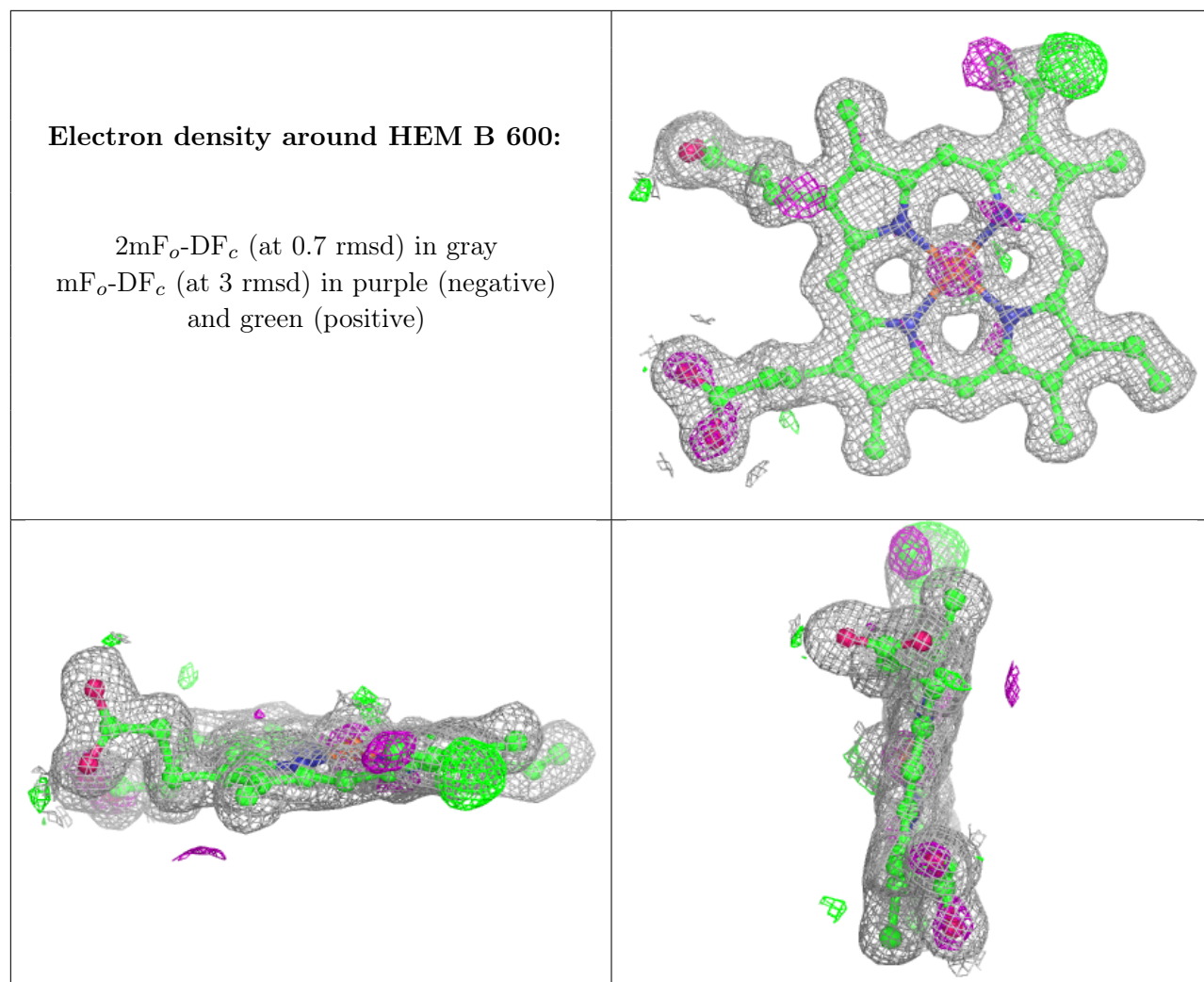




**Electron density around HEM A 600:**

$2mF_o-DF_c$  (at 0.7 rmsd) in gray  
 $mF_o-DF_c$  (at 3 rmsd) in purple (negative)  
and green (positive)





## 6.5 Other polymers [i](#)

There are no such residues in this entry.