



Full wwPDB X-ray Structure Validation Report ⓘ

Oct 21, 2024 – 06:01 PM EDT

PDB ID : 3BKI
Title : Crystal Structure of the GluR2 ligand binding core (S1S2J) in complex with FQX at 1.87 Angstroms
Authors : Cruz, L.; Estebanez-Perpina, E.; Pfaff, S.; Borngraeber, S.; Bao, N.; Fletterick, R.; England, P.
Deposited on : 2007-12-06
Resolution : 1.87 Å(reported)

This is a Full wwPDB X-ray Structure Validation Report for a publicly released PDB entry.

We welcome your comments at validation@mail.wwpdb.org

A user guide is available at

<https://www.wwpdb.org/validation/2017/XrayValidationReportHelp>

with specific help available everywhere you see the ⓘ symbol.

The types of validation reports are described at

<http://www.wwpdb.org/validation/2017/FAQs#types>.

The following versions of software and data (see [references ⓘ](#)) were used in the production of this report:

MolProbity : 4.02b-467
Mogul : 2022.3.0, CSD as543be (2022)
Xtriage (Phenix) : 1.20.1
EDS : 3.0
Percentile statistics : 20231227.v01 (using entries in the PDB archive December 27th 2023)
CCP4 : 9.0.003 (Gargrove)
Density-Fitness : 1.0.11
Ideal geometry (proteins) : Engh & Huber (2001)
Ideal geometry (DNA, RNA) : Parkinson et al. (1996)
Validation Pipeline (wwPDB-VP) : 2.39

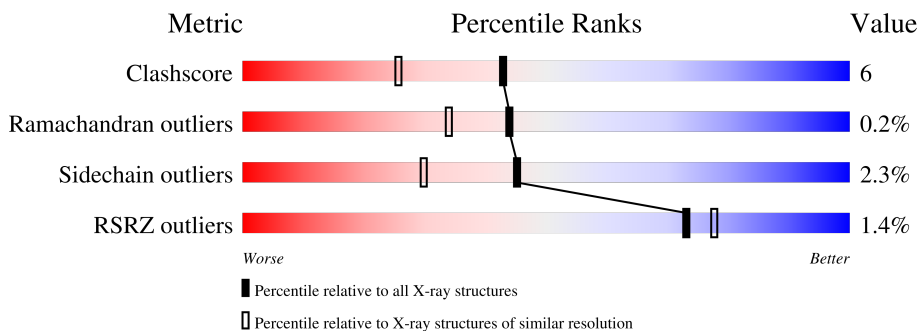
1 Overall quality at a glance

The following experimental techniques were used to determine the structure:

X-RAY DIFFRACTION

The reported resolution of this entry is 1.87 Å.

Percentile scores (ranging between 0-100) for global validation metrics of the entry are shown in the following graphic. The table shows the number of entries on which the scores are based.



Metric	Whole archive (#Entries)	Similar resolution (#Entries, resolution range(Å))
Clashscore	180529	1144 (1.88-1.88)
Ramachandran outliers	177936	1135 (1.88-1.88)
Sidechain outliers	177891	1135 (1.88-1.88)
RSRZ outliers	164620	1090 (1.88-1.88)

The table below summarises the geometric issues observed across the polymeric chains and their fit to the electron density. The red, orange, yellow and green segments of the lower bar indicate the fraction of residues that contain outliers for ≥ 3 , 2, 1 and 0 types of geometric quality criteria respectively. A grey segment represents the fraction of residues that are not modelled. The numeric value for each fraction is indicated below the corresponding segment, with a dot representing fractions $\leq 5\%$. The upper red bar (where present) indicates the fraction of residues that have poor fit to the electron density. The numeric value is given above the bar.

Mol	Chain	Length	Quality of chain
1	B	263	 2% 86% 10% ..
1	C	263	 2% 84% 13% ..
1	D	263	 2% 86% 10% ..
1	P	263	 2% 90% 7% ..

2 Entry composition [i](#)

There are 3 unique types of molecules in this entry. The entry contains 8955 atoms, of which 0 are hydrogens and 0 are deuteriums.

In the tables below, the ZeroOcc column contains the number of atoms modelled with zero occupancy, the AltConf column contains the number of residues with at least one atom in alternate conformation and the Trace column contains the number of residues modelled with at most 2 atoms.

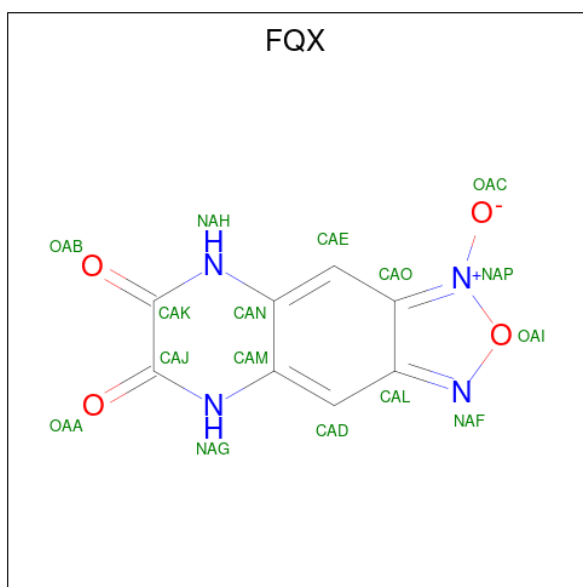
- Molecule 1 is a protein called Glutamate receptor 2.

Mol	Chain	Residues	Atoms					ZeroOcc	AltConf	Trace
			Total	C	N	O	S			
1	P	257	2009	1280	334	381	14	0	0	0
1	B	257	2009	1280	334	381	14	0	0	0
1	C	257	2009	1280	334	381	14	0	0	0
1	D	257	2009	1280	334	381	14	0	0	0

There are 16 discrepancies between the modelled and reference sequences:

Chain	Residue	Modelled	Actual	Comment	Reference
P	1	GLY	-	expression tag	UNP P19491
P	2	ALA	-	expression tag	UNP P19491
P	118	GLY	-	linker	UNP P19491
P	119	THR	-	linker	UNP P19491
B	1	GLY	-	expression tag	UNP P19491
B	2	ALA	-	expression tag	UNP P19491
B	118	GLY	-	linker	UNP P19491
B	119	THR	-	linker	UNP P19491
C	1	GLY	-	expression tag	UNP P19491
C	2	ALA	-	expression tag	UNP P19491
C	118	GLY	-	linker	UNP P19491
C	119	THR	-	linker	UNP P19491
D	1	GLY	-	expression tag	UNP P19491
D	2	ALA	-	expression tag	UNP P19491
D	118	GLY	-	linker	UNP P19491
D	119	THR	-	linker	UNP P19491

- Molecule 2 is [1,2,5]oxadiazolo[3,4-g]quinoxaline-6,7(5H,8H)-dione 1-oxide (three-letter code: FQX) (formula: C₈H₄N₄O₄).



Mol	Chain	Residues	Atoms				ZeroOcc	AltConf
			Total	C	N	O		
2	P	1	16	8	4	4	0	0
2	B	1	16	8	4	4	0	0
2	C	1	16	8	4	4	0	0
2	D	1	16	8	4	4	0	0

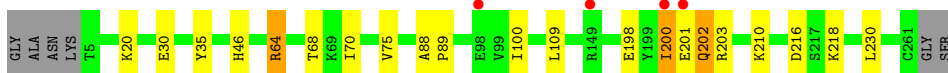
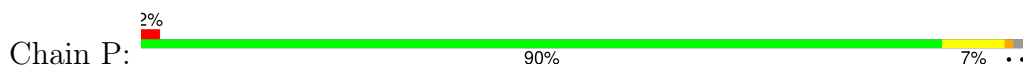
- Molecule 3 is water.

Mol	Chain	Residues	Atoms		ZeroOcc	AltConf
			Total	O		
3	P	219	219	219	0	0
3	B	198	198	198	0	0
3	C	228	228	228	0	0
3	D	210	210	210	0	0

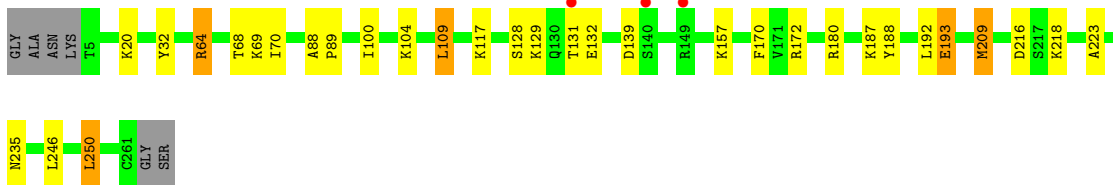
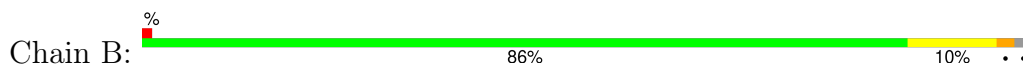
3 Residue-property plots [i](#)

These plots are drawn for all protein, RNA, DNA and oligosaccharide chains in the entry. The first graphic for a chain summarises the proportions of the various outlier classes displayed in the second graphic. The second graphic shows the sequence view annotated by issues in geometry and electron density. Residues are color-coded according to the number of geometric quality criteria for which they contain at least one outlier: green = 0, yellow = 1, orange = 2 and red = 3 or more. A red dot above a residue indicates a poor fit to the electron density ($RSRZ > 2$). Stretches of 2 or more consecutive residues without any outlier are shown as a green connector. Residues present in the sample, but not in the model, are shown in grey.

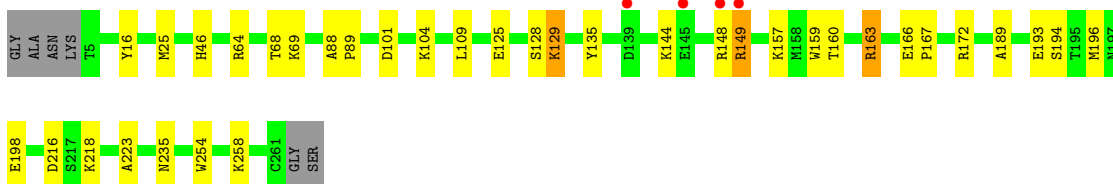
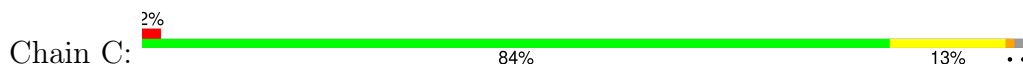
- Molecule 1: Glutamate receptor 2



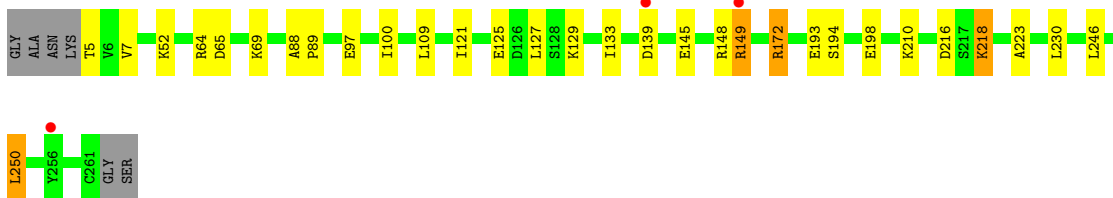
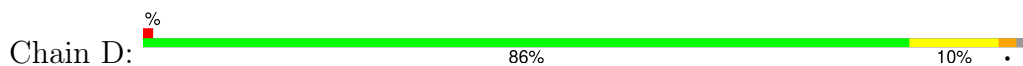
- Molecule 1: Glutamate receptor 2



- Molecule 1: Glutamate receptor 2



- Molecule 1: Glutamate receptor 2



4 Data and refinement statistics i

Property	Value	Source
Space group	P 21 21 21	Depositor
Cell constants a, b, c, α , β , γ	62.34Å 92.26Å 195.24Å 90.00° 90.00° 90.00°	Depositor
Resolution (Å)	19.98 – 1.87 19.98 – 1.90	Depositor EDS
% Data completeness (in resolution range)	95.9 (19.98-1.87) 96.2 (19.98-1.90)	Depositor EDS
R_{merge}	0.06	Depositor
R_{sym}	(Not available)	Depositor
$\langle I/\sigma(I) \rangle$ ¹	2.03 (at 1.91Å)	Xtrriage
Refinement program	CNS	Depositor
R, R_{free}	0.213 , 0.221 0.209 , (Not available)	Depositor DCC
R_{free} test set	No test flags present.	wwPDB-VP
Wilson B-factor (Å ²)	15.4	Xtrriage
Anisotropy	0.392	Xtrriage
Bulk solvent k_{sol} (e/Å ³), B_{sol} (Å ²)	0.35 , 42.4	EDS
L-test for twinning ²	$\langle L \rangle = 0.49$, $\langle L^2 \rangle = 0.32$	Xtrriage
Estimated twinning fraction	No twinning to report.	Xtrriage
F_o, F_c correlation	0.94	EDS
Total number of atoms	8955	wwPDB-VP
Average B, all atoms (Å ²)	18.0	wwPDB-VP

Xtrriage's analysis on translational NCS is as follows: *The analyses of the Patterson function reveals a significant off-origin peak that is 29.61 % of the origin peak, indicating pseudo-translational symmetry. The chance of finding a peak of this or larger height randomly in a structure without pseudo-translational symmetry is equal to 1.5056e-03. The detected translational NCS is most likely also responsible for the elevated intensity ratio.*

¹Intensities estimated from amplitudes.

²Theoretical values of $\langle |L| \rangle$, $\langle L^2 \rangle$ for acentric reflections are 0.5, 0.333 respectively for untwinned datasets, and 0.375, 0.2 for perfectly twinned datasets.

5 Model quality [i](#)

5.1 Standard geometry [i](#)

Bond lengths and bond angles in the following residue types are not validated in this section: FQX

The Z score for a bond length (or angle) is the number of standard deviations the observed value is removed from the expected value. A bond length (or angle) with $|Z| > 5$ is considered an outlier worth inspection. RMSZ is the root-mean-square of all Z scores of the bond lengths (or angles).

Mol	Chain	Bond lengths		Bond angles	
		RMSZ	# Z >5	RMSZ	# Z >5
1	B	0.73	0/2045	0.80	1/2751 (0.0%)
1	C	0.75	0/2045	0.78	0/2751
1	D	0.78	0/2045	0.78	0/2751
1	P	0.80	0/2045	0.83	0/2751
All	All	0.77	0/8180	0.80	1/11004 (0.0%)

There are no bond length outliers.

All (1) bond angle outliers are listed below:

Mol	Chain	Res	Type	Atoms	Z	Observed(°)	Ideal(°)
1	B	209	MET	CB-CG-SD	-5.16	96.92	112.40

There are no chirality outliers.

There are no planarity outliers.

5.2 Too-close contacts [i](#)

In the following table, the Non-H and H(model) columns list the number of non-hydrogen atoms and hydrogen atoms in the chain respectively. The H(added) column lists the number of hydrogen atoms added and optimized by MolProbity. The Clashes column lists the number of clashes within the asymmetric unit, whereas Symm-Clashes lists symmetry-related clashes.

Mol	Chain	Non-H	H(model)	H(added)	Clashes	Symm-Clashes
1	B	2009	0	2037	26	0
1	C	2009	0	2037	30	0
1	D	2009	0	2037	26	0
1	P	2009	0	2036	17	0
2	B	16	0	4	3	0
2	C	16	0	4	2	0

Continued on next page...

Continued from previous page...

Mol	Chain	Non-H	H(model)	H(added)	Clashes	Symm-Clashes
2	D	16	0	4	1	0
2	P	16	0	4	0	0
3	B	198	0	0	1	0
3	C	228	0	0	8	0
3	D	210	0	0	4	0
3	P	219	0	0	3	0
All	All	8955	0	8163	99	0

The all-atom clashscore is defined as the number of clashes found per 1000 atoms (including hydrogen atoms). The all-atom clashscore for this structure is 6.

All (99) close contacts within the same asymmetric unit are listed below, sorted by their clash magnitude.

Atom-1	Atom-2	Interatomic distance (Å)	Clash overlap (Å)
1:D:193:GLU:HG2	3:D:481:HOH:O	1.47	1.13
1:B:68:THR:HG22	1:B:70:ILE:HG13	1.32	1.05
1:B:216:ASP:OD2	1:B:218:LYS:HE2	1.67	0.94
1:P:201:GLU:O	1:P:202:GLN:HG2	1.71	0.90
1:B:117:LYS:HG2	1:B:209:MET:HE3	1.58	0.85
1:D:194:SER:O	1:D:198:GLU:HG3	1.80	0.80
1:B:64:ARG:NH1	1:B:69:LYS:HD2	1.97	0.80
1:C:148:ARG:HD3	1:C:159:TRP:CZ2	2.18	0.78
1:D:7:VAL:HG22	1:D:52:LYS:HE2	1.66	0.77
1:C:216:ASP:OD2	1:C:218:LYS:HE2	1.84	0.76
1:P:46:HIS:HE1	3:P:435:HOH:O	1.68	0.76
1:D:148:ARG:HG2	1:D:149:ARG:NH2	2.03	0.73
1:B:64:ARG:HH11	1:B:69:LYS:HD2	1.57	0.69
1:C:193:GLU:OE1	2:C:264:FQX:CAD	2.40	0.69
1:C:193:GLU:HG3	3:C:498:HOH:O	1.92	0.69
1:P:201:GLU:O	1:P:202:GLN:CG	2.39	0.69
1:D:148:ARG:HG2	1:D:149:ARG:CZ	2.24	0.67
1:P:216:ASP:OD2	1:P:218:LYS:HE2	1.94	0.66
1:D:172:ARG:N	1:D:172:ARG:HD2	2.13	0.64
1:P:64:ARG:HD2	3:P:442:HOH:O	1.97	0.64
1:C:128:SER:O	1:C:157:LYS:HE3	1.98	0.63
1:B:109:LEU:CD1	1:B:193:GLU:HG2	2.28	0.63
1:C:144:LYS:NZ	3:C:439:HOH:O	2.29	0.62
1:C:148:ARG:HH21	1:C:159:TRP:HE1	1.49	0.61
1:D:5:THR:N	3:D:464:HOH:O	2.33	0.60
1:C:25:MET:HE3	1:C:25:MET:HA	1.83	0.60
1:P:201:GLU:O	1:P:202:GLN:CB	2.50	0.59

Continued on next page...

Continued from previous page...

Atom-1	Atom-2	Interatomic distance (Å)	Clash overlap (Å)
1:D:145:GLU:OE2	1:D:148:ARG:HD3	2.03	0.58
1:B:193:GLU:OE1	2:B:264:FQX:CAL	2.51	0.57
1:C:46:HIS:HE1	3:C:392:HOH:O	1.87	0.57
1:C:196:MET:HE2	3:C:292:HOH:O	2.05	0.57
1:B:64:ARG:HD2	1:B:69:LYS:HA	1.86	0.56
1:D:64:ARG:HD3	1:D:69:LYS:HA	1.88	0.55
1:B:68:THR:CG2	1:B:70:ILE:HG13	2.21	0.55
1:B:68:THR:HG22	1:B:70:ILE:CG1	2.21	0.55
1:B:139:ASP:HB3	1:B:170:PHE:HB3	1.88	0.55
1:C:160:THR:HG23	1:C:163:ARG:HH11	1.71	0.55
1:P:68:THR:HG21	1:P:70:ILE:HD12	1.88	0.54
1:B:132:GLU:OE2	1:B:187:LYS:HE2	2.08	0.54
1:B:193:GLU:OE1	2:B:264:FQX:CAD	2.55	0.54
1:D:149:ARG:HA	1:D:149:ARG:HE	1.72	0.54
1:C:160:THR:CG2	1:C:163:ARG:HH11	2.21	0.53
1:P:200:ILE:O	1:P:203:ARG:N	2.37	0.53
1:P:88:ALA:HB1	1:P:89:PRO:HD2	1.89	0.53
1:C:25:MET:HA	1:C:25:MET:CE	2.38	0.53
1:B:172:ARG:HG2	3:B:457:HOH:O	2.10	0.52
1:D:246:LEU:HD13	1:D:250:LEU:HD22	1.92	0.51
1:B:246:LEU:HD13	1:B:250:LEU:HD22	1.92	0.51
1:C:64:ARG:HD2	3:C:405:HOH:O	2.11	0.50
1:B:109:LEU:HD13	1:B:193:GLU:HG2	1.93	0.50
1:D:193:GLU:OE1	2:D:264:FQX:CAO	2.61	0.49
1:C:88:ALA:HB1	1:C:89:PRO:HD2	1.93	0.49
1:P:198:GLU:O	1:P:201:GLU:O	2.32	0.48
1:B:100:ILE:HD12	1:B:223:ALA:HB1	1.95	0.48
1:C:16:TYR:HE2	3:C:292:HOH:O	1.97	0.48
1:C:193:GLU:CG	3:C:498:HOH:O	2.58	0.47
1:C:160:THR:O	1:C:163:ARG:NE	2.47	0.47
1:P:198:GLU:HG3	1:P:210:LYS:CE	2.45	0.47
1:D:97:GLU:O	1:D:97:GLU:HG3	2.15	0.47
1:D:139:ASP:OD2	1:D:172:ARG:NH2	2.48	0.47
1:P:20:LYS:HD2	1:P:30:GLU:O	2.15	0.45
1:C:148:ARG:HD3	1:C:159:TRP:CE2	2.52	0.45
1:D:52:LYS:O	1:D:52:LYS:HG3	2.16	0.45
1:D:100:ILE:HD12	1:D:223:ALA:HB1	1.98	0.45
1:D:133:ILE:HD11	3:D:429:HOH:O	2.17	0.45
1:C:149:ARG:O	1:C:149:ARG:HG3	2.16	0.45
1:D:193:GLU:HG3	3:D:482:HOH:O	2.17	0.45
1:B:104:LYS:HG2	1:B:235:ASN:OD1	2.17	0.45

Continued on next page...

Continued from previous page...

Atom-1	Atom-2	Interatomic distance (Å)	Clash overlap (Å)
1:B:192:LEU:HD23	1:B:192:LEU:N	2.32	0.45
1:C:104:LYS:HG2	1:C:235:ASN:OD1	2.17	0.44
1:C:68:THR:O	1:C:69:LYS:HB2	2.17	0.44
1:D:88:ALA:HB1	1:D:89:PRO:HD2	1.99	0.44
1:D:198:GLU:HG2	1:D:210:LYS:HE2	1.99	0.44
1:B:193:GLU:OE1	2:B:264:FQX:CAO	2.64	0.44
1:D:125:GLU:HG2	1:D:129:LYS:HE3	1.99	0.43
1:D:65:ASP:O	1:D:69:LYS:HA	2.17	0.43
1:B:180:ARG:HG2	1:B:188:TYR:CD2	2.53	0.43
1:B:88:ALA:HB1	1:B:89:PRO:HD2	2.00	0.43
1:D:246:LEU:CD1	1:D:250:LEU:HD22	2.49	0.43
1:D:121:ILE:HD12	1:D:127:LEU:HD23	2.00	0.43
1:B:209:MET:HE3	1:B:209:MET:HB2	1.87	0.42
1:C:254:TRP:CE3	1:C:258:LYS:HD2	2.55	0.42
1:C:166:GLU:HA	1:C:167:PRO:C	2.40	0.42
1:C:193:GLU:OE1	2:C:264:FQX:CAM	2.68	0.42
1:B:20:LYS:HE3	1:B:32:TYR:O	2.19	0.41
1:C:194:SER:O	1:C:198:GLU:HG2	2.19	0.41
1:P:35:TYR:CD1	1:P:35:TYR:C	2.95	0.41
1:P:68:THR:HG22	1:P:70:ILE:HG13	2.03	0.41
1:P:200:ILE:O	1:P:201:GLU:C	2.58	0.41
1:C:101:ASP:O	1:C:223:ALA:HA	2.20	0.41
1:C:125:GLU:HG2	1:C:129:LYS:CE	2.51	0.41
1:D:216:ASP:OD2	1:D:218:LYS:HE2	2.21	0.41
1:P:46:HIS:CE1	3:P:435:HOH:O	2.56	0.41
1:D:129:LYS:HB3	1:D:129:LYS:HE2	1.79	0.41
1:C:135:TYR:HA	1:C:189:ALA:O	2.21	0.40
1:B:128:SER:O	1:B:157:LYS:HE3	2.21	0.40
1:B:250:LEU:HD12	1:B:250:LEU:HA	1.88	0.40
1:C:46:HIS:CE1	3:C:392:HOH:O	2.69	0.40
1:P:75:VAL:HG13	1:P:100:ILE:HD13	2.03	0.40

There are no symmetry-related clashes.

5.3 Torsion angles

5.3.1 Protein backbone

In the following table, the Percentiles column shows the percent Ramachandran outliers of the chain as a percentile score with respect to all X-ray entries followed by that with respect to entries of similar resolution.

The Analysed column shows the number of residues for which the backbone conformation was analysed, and the total number of residues.

Mol	Chain	Analysed	Favoured	Allowed	Outliers	Percentiles	
1	B	255/263 (97%)	254 (100%)	1 (0%)	0	100	100
1	C	255/263 (97%)	252 (99%)	3 (1%)	0	100	100
1	D	255/263 (97%)	251 (98%)	4 (2%)	0	100	100
1	P	255/263 (97%)	250 (98%)	3 (1%)	2 (1%)	16	6
All	All	1020/1052 (97%)	1007 (99%)	11 (1%)	2 (0%)	44	34

All (2) Ramachandran outliers are listed below:

Mol	Chain	Res	Type
1	P	202	GLN
1	P	200	ILE

5.3.2 Protein sidechains [i](#)

In the following table, the Percentiles column shows the percent sidechain outliers of the chain as a percentile score with respect to all X-ray entries followed by that with respect to entries of similar resolution.

The Analysed column shows the number of residues for which the sidechain conformation was analysed, and the total number of residues.

Mol	Chain	Analysed	Rotameric	Outliers	Percentiles	
1	B	216/219 (99%)	210 (97%)	6 (3%)	38	22
1	C	216/219 (99%)	211 (98%)	5 (2%)	45	30
1	D	216/219 (99%)	210 (97%)	6 (3%)	38	22
1	P	216/219 (99%)	213 (99%)	3 (1%)	62	52
All	All	864/876 (99%)	844 (98%)	20 (2%)	45	30

All (20) residues with a non-rotameric sidechain are listed below:

Mol	Chain	Res	Type
1	P	64	ARG
1	P	109	LEU
1	P	230	LEU
1	B	64	ARG
1	B	109	LEU
1	B	129	LYS

Continued on next page...

Continued from previous page...

Mol	Chain	Res	Type
1	B	131	THR
1	B	193	GLU
1	B	250	LEU
1	C	109	LEU
1	C	129	LYS
1	C	149	ARG
1	C	163	ARG
1	C	172	ARG
1	D	109	LEU
1	D	149	ARG
1	D	172	ARG
1	D	218	LYS
1	D	230	LEU
1	D	250	LEU

Sometimes sidechains can be flipped to improve hydrogen bonding and reduce clashes. All (7) such sidechains are listed below:

Mol	Chain	Res	Type
1	P	46	HIS
1	P	242	ASN
1	B	242	ASN
1	C	46	HIS
1	C	242	ASN
1	D	46	HIS
1	D	242	ASN

5.3.3 RNA [i](#)

There are no RNA molecules in this entry.

5.4 Non-standard residues in protein, DNA, RNA chains [i](#)

There are no non-standard protein/DNA/RNA residues in this entry.

5.5 Carbohydrates [i](#)

There are no oligosaccharides in this entry.

5.6 Ligand geometry

4 ligands are modelled in this entry.

In the following table, the Counts columns list the number of bonds (or angles) for which Mogul statistics could be retrieved, the number of bonds (or angles) that are observed in the model and the number of bonds (or angles) that are defined in the Chemical Component Dictionary. The Link column lists molecule types, if any, to which the group is linked. The Z score for a bond length (or angle) is the number of standard deviations the observed value is removed from the expected value. A bond length (or angle) with $|Z| > 2$ is considered an outlier worth inspection. RMSZ is the root-mean-square of all Z scores of the bond lengths (or angles).

Mol	Type	Chain	Res	Link	Bond lengths			Bond angles		
					Counts	RMSZ	# Z > 2	Counts	RMSZ	# Z > 2
2	FQX	P	264	-	15,18,18	2.22	3 (20%)	20,27,27	2.73	8 (40%)
2	FQX	C	264	-	15,18,18	2.22	3 (20%)	20,27,27	2.73	8 (40%)
2	FQX	D	264	-	15,18,18	2.21	3 (20%)	20,27,27	2.73	8 (40%)
2	FQX	B	264	-	15,18,18	2.20	3 (20%)	20,27,27	2.72	8 (40%)

In the following table, the Chirals column lists the number of chiral outliers, the number of chiral centers analysed, the number of these observed in the model and the number defined in the Chemical Component Dictionary. Similar counts are reported in the Torsion and Rings columns. '-' means no outliers of that kind were identified.

Mol	Type	Chain	Res	Link	Chirals	Torsions	Rings
2	FQX	P	264	-	-	-	0/3/3/3
2	FQX	C	264	-	-	-	0/3/3/3
2	FQX	D	264	-	-	-	0/3/3/3
2	FQX	B	264	-	-	-	0/3/3/3

All (12) bond length outliers are listed below:

Mol	Chain	Res	Type	Atoms	Z	Observed(Å)	Ideal(Å)
2	P	264	FQX	CAK-CAJ	-5.34	1.41	1.52
2	C	264	FQX	CAK-CAJ	-5.33	1.41	1.52
2	D	264	FQX	CAK-CAJ	-5.33	1.41	1.52
2	B	264	FQX	CAK-CAJ	-5.29	1.41	1.52
2	P	264	FQX	CAJ-NAG	4.33	1.41	1.35
2	C	264	FQX	CAJ-NAG	4.31	1.41	1.35
2	D	264	FQX	CAJ-NAG	4.27	1.41	1.35
2	B	264	FQX	CAJ-NAG	4.27	1.41	1.35
2	D	264	FQX	CAK-NAH	3.91	1.41	1.35
2	C	264	FQX	CAK-NAH	3.90	1.41	1.35
2	P	264	FQX	CAK-NAH	3.89	1.41	1.35

Continued on next page...

Continued from previous page...

Mol	Chain	Res	Type	Atoms	Z	Observed(Å)	Ideal(Å)
2	B	264	FQX	CAK-NAH	3.80	1.41	1.35

All (32) bond angle outliers are listed below:

Mol	Chain	Res	Type	Atoms	Z	Observed(°)	Ideal(°)
2	P	264	FQX	OAA-CAJ-CAK	6.35	125.25	119.62
2	C	264	FQX	OAA-CAJ-CAK	6.35	125.24	119.62
2	D	264	FQX	OAA-CAJ-CAK	6.31	125.21	119.62
2	B	264	FQX	OAA-CAJ-CAK	6.31	125.21	119.62
2	D	264	FQX	OAB-CAK-CAJ	6.26	125.17	119.62
2	C	264	FQX	OAB-CAK-CAJ	6.25	125.15	119.62
2	B	264	FQX	OAB-CAK-CAJ	6.24	125.15	119.62
2	P	264	FQX	OAB-CAK-CAJ	6.23	125.14	119.62
2	C	264	FQX	CAJ-CAK-NAH	4.46	119.94	116.82
2	P	264	FQX	CAJ-CAK-NAH	4.45	119.93	116.82
2	D	264	FQX	CAJ-CAK-NAH	4.44	119.93	116.82
2	B	264	FQX	CAJ-CAK-NAH	4.41	119.91	116.82
2	D	264	FQX	OAB-CAK-NAH	-3.64	114.91	121.61
2	C	264	FQX	OAB-CAK-NAH	-3.64	114.91	121.61
2	P	264	FQX	OAB-CAK-NAH	-3.63	114.92	121.61
2	B	264	FQX	OAB-CAK-NAH	-3.62	114.94	121.61
2	P	264	FQX	OAA-CAJ-NAG	-2.99	116.11	121.61
2	C	264	FQX	OAA-CAJ-NAG	-2.97	116.13	121.61
2	B	264	FQX	OAA-CAJ-NAG	-2.96	116.15	121.61
2	D	264	FQX	OAA-CAJ-NAG	-2.96	116.15	121.61
2	P	264	FQX	CAK-CAJ-NAG	2.62	118.65	116.82
2	B	264	FQX	CAK-CAJ-NAG	2.61	118.64	116.82
2	D	264	FQX	CAK-CAJ-NAG	2.60	118.64	116.82
2	C	264	FQX	CAK-CAJ-NAG	2.58	118.63	116.82
2	P	264	FQX	CAN-NAH-CAK	-2.45	121.39	124.82
2	C	264	FQX	CAN-NAH-CAK	-2.42	121.43	124.82
2	D	264	FQX	CAN-NAH-CAK	-2.42	121.43	124.82
2	B	264	FQX	CAN-NAH-CAK	-2.39	121.48	124.82
2	C	264	FQX	CAM-NAG-CAJ	-2.19	121.76	124.82
2	P	264	FQX	CAM-NAG-CAJ	-2.18	121.77	124.82
2	D	264	FQX	CAM-NAG-CAJ	-2.18	121.77	124.82
2	B	264	FQX	CAM-NAG-CAJ	-2.18	121.77	124.82

There are no chirality outliers.

There are no torsion outliers.

There are no ring outliers.

3 monomers are involved in 6 short contacts:

Mol	Chain	Res	Type	Clashes	Symm-Clashes
2	C	264	FQX	2	0
2	D	264	FQX	1	0
2	B	264	FQX	3	0

5.7 Other polymers [i](#)

There are no such residues in this entry.

5.8 Polymer linkage issues [i](#)

There are no chain breaks in this entry.

6 Fit of model and data [i](#)

6.1 Protein, DNA and RNA chains [i](#)

In the following table, the column labelled ‘#RSRZ > 2’ contains the number (and percentage) of RSRZ outliers, followed by percent RSRZ outliers for the chain as percentile scores relative to all X-ray entries and entries of similar resolution. The OWAB column contains the minimum, median, 95th percentile and maximum values of the occupancy-weighted average B-factor per residue. The column labelled ‘Q < 0.9’ lists the number of (and percentage) of residues with an average occupancy less than 0.9.

Mol	Chain	Analysed	<RSRZ>	#RSRZ>2	OWAB(Å ²)	Q<0.9
1	B	257/263 (97%)	0.03	3 (1%) 76 80	9, 16, 32, 42	1 (0%)
1	C	257/263 (97%)	-0.04	4 (1%) 70 75	7, 15, 32, 42	1 (0%)
1	D	257/263 (97%)	-0.02	3 (1%) 76 80	8, 16, 31, 41	1 (0%)
1	P	257/263 (97%)	0.01	4 (1%) 70 75	8, 16, 30, 39	0
All	All	1028/1052 (97%)	-0.00	14 (1%) 73 78	7, 16, 31, 42	3 (0%)

All (14) RSRZ outliers are listed below:

Mol	Chain	Res	Type	RSRZ
1	D	256	TYR	6.1
1	P	200	ILE	5.5
1	B	131	THR	3.1
1	B	149	ARG	3.0
1	P	149	ARG	2.7
1	C	149	ARG	2.6
1	C	148	ARG	2.3
1	P	201	GLU	2.2
1	C	139	ASP	2.2
1	C	145	GLU	2.1
1	D	149	ARG	2.1
1	D	139	ASP	2.0
1	B	140	SER	2.0
1	P	98	GLU	2.0

6.2 Non-standard residues in protein, DNA, RNA chains [i](#)

There are no non-standard protein/DNA/RNA residues in this entry.

6.3 Carbohydrates [i](#)

There are no monosaccharides in this entry.

6.4 Ligands [i](#)

In the following table, the Atoms column lists the number of modelled atoms in the group and the number defined in the chemical component dictionary. The B-factors column lists the minimum, median, 95th percentile and maximum values of B factors of atoms in the group. The column labelled 'Q< 0.9' lists the number of atoms with occupancy less than 0.9.

Mol	Type	Chain	Res	Atoms	RSCC	RSR	B-factors(Å ²)	Q<0.9
2	FQX	P	264	16/16	0.83	0.11	18,21,31,31	0
2	FQX	D	264	16/16	0.83	0.11	17,22,32,33	0
2	FQX	C	264	16/16	0.84	0.12	16,20,28,33	0
2	FQX	B	264	16/16	0.84	0.10	17,19,28,31	0

6.5 Other polymers [i](#)

There are no such residues in this entry.