



Full wwPDB X-ray Structure Validation Report ⓘ

Mar 5, 2024 – 05:42 PM EST

PDB ID : 3AUA
Title : Crystal structure of the quaternary complex-2 of an isomerase
Authors : Umeda, T.; Tanaka, N.; Kusakabe, Y.; Nakanishi, M.; Kitade, Y.; Nakamura, K.T.
Deposited on : 2011-02-01
Resolution : 2.15 Å(reported)

This is a Full wwPDB X-ray Structure Validation Report for a publicly released PDB entry.

We welcome your comments at validation@mail.wwpdb.org

A user guide is available at

<https://www.wwpdb.org/validation/2017/XrayValidationReportHelp>

with specific help available everywhere you see the ⓘ symbol.

The types of validation reports are described at

<http://www.wwpdb.org/validation/2017/FAQs#types>.

The following versions of software and data (see [references ⓘ](#)) were used in the production of this report:

MolProbity : 4.02b-467
Mogul : 1.8.5 (274361), CSD as541be (2020)
Xtrriage (Phenix) : 1.13
EDS : 2.36
buster-report : 1.1.7 (2018)
Percentile statistics : 20191225.v01 (using entries in the PDB archive December 25th 2019)
Refmac : 5.8.0158
CCP4 : 7.0.044 (Gargrove)
Ideal geometry (proteins) : Engh & Huber (2001)
Ideal geometry (DNA, RNA) : Parkinson et al. (1996)
Validation Pipeline (wwPDB-VP) : 2.36

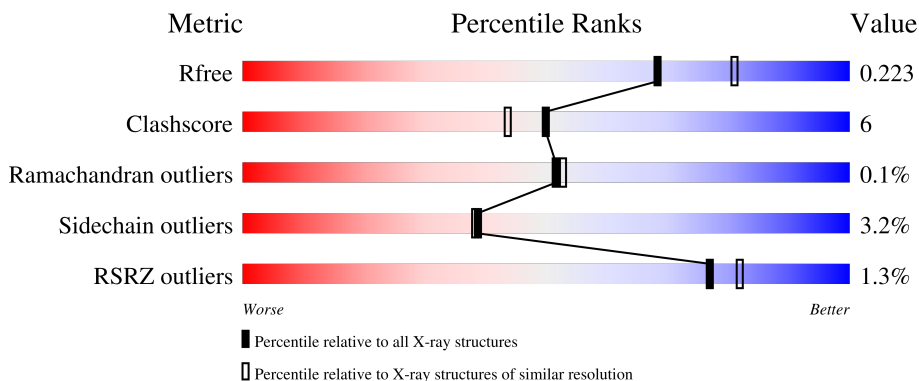
1 Overall quality at a glance

The following experimental techniques were used to determine the structure:

X-RAY DIFFRACTION


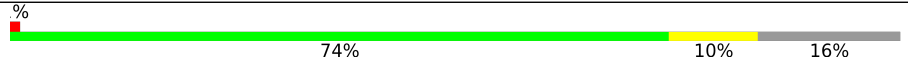
The reported resolution of this entry is 2.15 Å.

Percentile scores (ranging between 0-100) for global validation metrics of the entry are shown in the following graphic. The table shows the number of entries on which the scores are based.



Metric	Whole archive (#Entries)	Similar resolution (#Entries, resolution range(Å))
R_{free}	130704	1479 (2.16-2.16)
Clashscore	141614	1585 (2.16-2.16)
Ramachandran outliers	138981	1560 (2.16-2.16)
Sidechain outliers	138945	1559 (2.16-2.16)
RSRZ outliers	127900	1456 (2.16-2.16)

The table below summarises the geometric issues observed across the polymeric chains and their fit to the electron density. The red, orange, yellow and green segments of the lower bar indicate the fraction of residues that contain outliers for ≥ 3 , 2, 1 and 0 types of geometric quality criteria respectively. A grey segment represents the fraction of residues that are not modelled. The numeric value for each fraction is indicated below the corresponding segment, with a dot representing fractions $\leq 5\%$. The upper red bar (where present) indicates the fraction of residues that have poor fit to the electron density. The numeric value is given above the bar.

Mol	Chain	Length	Quality of chain
1	A	488	 72% 12% 16%
1	B	488	 74% 10% 16%

2 Entry composition [i](#)

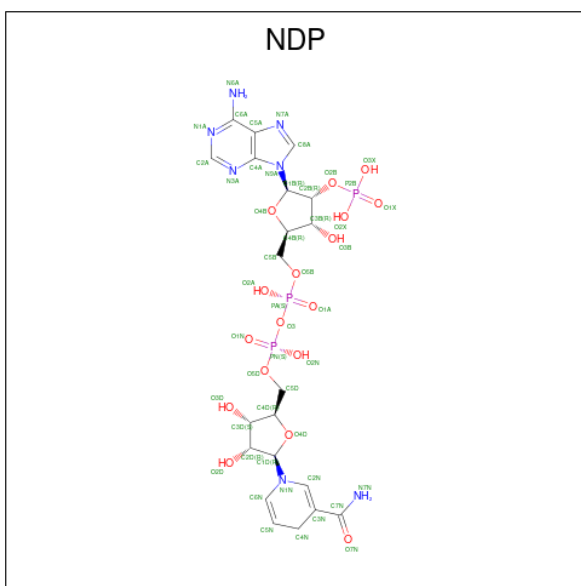
There are 6 unique types of molecules in this entry. The entry contains 7076 atoms, of which 0 are hydrogens and 0 are deuteriums.

In the tables below, the ZeroOcc column contains the number of atoms modelled with zero occupancy, the AltConf column contains the number of residues with at least one atom in alternate conformation and the Trace column contains the number of residues modelled with at most 2 atoms.

- Molecule 1 is a protein called 1-deoxy-D-xylulose 5-phosphate reductoisomerase.

Mol	Chain	Residues	Atoms					ZeroOcc	AltConf	Trace
			Total	C	N	O	S			
1	A	410	Total 3277	2103	537	616	21	0	1	0
1	B	410	Total 3277	2103	537	616	21	0	1	0

- Molecule 2 is NADPH DIHYDRO-NICOTINAMIDE-ADENINE-DINUCLEOTIDE PHOSPHATE (three-letter code: NDP) (formula: C₂₁H₃₀N₇O₁₇P₃).

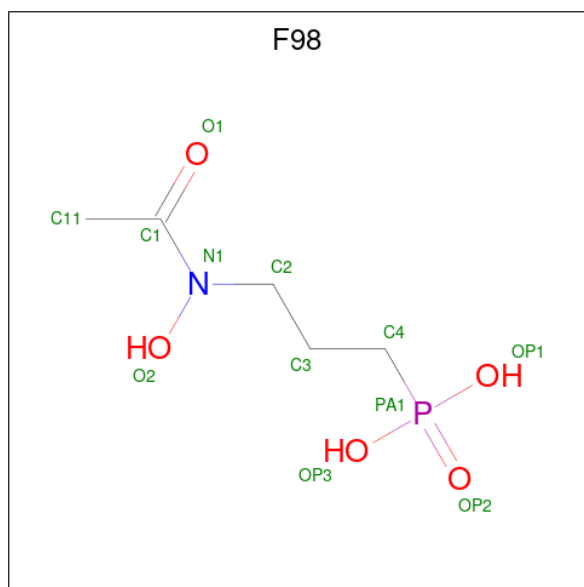


Mol	Chain	Residues	Atoms					ZeroOcc	AltConf
			Total	C	N	O	P		
2	A	1	Total 48	21	7	17	3	0	0
2	B	1	Total 48	21	7	17	3	0	0

- Molecule 3 is MAGNESIUM ION (three-letter code: MG) (formula: Mg).

Mol	Chain	Residues	Atoms	ZeroOcc	AltConf
3	A	1	Total Mg 1 1	0	0
3	B	1	Total Mg 1 1	0	0

- Molecule 4 is 3-[ethanoyl(hydroxy)amino]propylphosphonic acid (three-letter code: F98) (formula: C₅H₁₂NO₅P).



Mol	Chain	Residues	Atoms	ZeroOcc	AltConf
4	A	1	Total C N O P 12 5 1 5 1	0	0
4	B	1	Total C N O P 12 5 1 5 1	0	0

- Molecule 5 is CALCIUM ION (three-letter code: CA) (formula: Ca).

Mol	Chain	Residues	Atoms	ZeroOcc	AltConf
5	B	2	Total Ca 2 2	0	0

- Molecule 6 is water.

Mol	Chain	Residues	Atoms	ZeroOcc	AltConf
6	A	205	Total O 205 205	0	0
6	B	193	Total O 193 193	0	0

4 Data and refinement statistics i

Property	Value	Source
Space group	P 1 21 1	Depositor
Cell constants a, b, c, α , β , γ	51.01Å 77.61Å 111.74Å 90.00° 90.63° 90.00°	Depositor
Resolution (Å)	50.00 – 2.15 46.60 – 2.15	Depositor EDS
% Data completeness (in resolution range)	97.0 (50.00-2.15) 96.9 (46.60-2.15)	Depositor EDS
R_{merge}	(Not available)	Depositor
R_{sym}	(Not available)	Depositor
$\langle I/\sigma(I) \rangle$ ¹	2.82 (at 2.14Å)	Xtrriage
Refinement program	REFMAC	Depositor
R, R_{free}	0.172 , 0.220 0.173 , 0.223	Depositor DCC
R_{free} test set	2337 reflections (5.07%)	wwPDB-VP
Wilson B-factor (Å ²)	25.0	Xtrriage
Anisotropy	0.373	Xtrriage
Bulk solvent k_{sol} (e/Å ³), B_{sol} (Å ²)	0.40 , 46.7	EDS
L-test for twinning ²	$\langle L \rangle = 0.49$, $\langle L^2 \rangle = 0.32$	Xtrriage
Estimated twinning fraction	0.036 for h,-k,-l	Xtrriage
F_o, F_c correlation	0.96	EDS
Total number of atoms	7076	wwPDB-VP
Average B, all atoms (Å ²)	26.0	wwPDB-VP

Xtrriage's analysis on translational NCS is as follows: *The largest off-origin peak in the Patterson function is 5.47% of the height of the origin peak. No significant pseudotranslation is detected.*

¹Intensities estimated from amplitudes.

²Theoretical values of $\langle |L| \rangle$, $\langle L^2 \rangle$ for acentric reflections are 0.5, 0.333 respectively for untwinned datasets, and 0.375, 0.2 for perfectly twinned datasets.

5 Model quality

5.1 Standard geometry

Bond lengths and bond angles in the following residue types are not validated in this section: F98, MG, NDP, CA

The Z score for a bond length (or angle) is the number of standard deviations the observed value is removed from the expected value. A bond length (or angle) with $|Z| > 5$ is considered an outlier worth inspection. RMSZ is the root-mean-square of all Z scores of the bond lengths (or angles).

Mol	Chain	Bond lengths		Bond angles	
		RMSZ	# Z >5	RMSZ	# Z >5
1	A	0.49	0/3345	0.56	0/4517
1	B	0.51	0/3345	0.58	0/4517
All	All	0.50	0/6690	0.57	0/9034

There are no bond length outliers.

There are no bond angle outliers.

There are no chirality outliers.

There are no planarity outliers.

5.2 Too-close contacts

In the following table, the Non-H and H(model) columns list the number of non-hydrogen atoms and hydrogen atoms in the chain respectively. The H(added) column lists the number of hydrogen atoms added and optimized by MolProbity. The Clashes column lists the number of clashes within the asymmetric unit, whereas Symm-Clashes lists symmetry-related clashes.

Mol	Chain	Non-H	H(model)	H(added)	Clashes	Symm-Clashes
1	A	3277	0	3323	40	0
1	B	3277	0	3323	38	0
2	A	48	0	26	0	0
2	B	48	0	26	0	0
3	A	1	0	0	0	0
3	B	1	0	0	0	0
4	A	12	0	9	1	0
4	B	12	0	9	0	0
5	B	2	0	0	0	0
6	A	205	0	0	12	0
6	B	193	0	0	9	0
All	All	7076	0	6716	77	0

The all-atom clashscore is defined as the number of clashes found per 1000 atoms (including hydrogen atoms). The all-atom clashscore for this structure is 6.

All (77) close contacts within the same asymmetric unit are listed below, sorted by their clash magnitude.

Atom-1	Atom-2	Interatomic distance (Å)	Clash overlap (Å)
1:A:454:GLN:HG3	6:A:1076:HOH:O	1.41	1.17
1:A:165:MET:CE	1:A:169:CYS:SG	2.54	0.94
1:A:126:ARG:HD3	6:A:1060:HOH:O	1.73	0.89
1:A:480:ASP:HB3	6:A:1079:HOH:O	1.71	0.89
1:A:393:LYS:HG2	6:A:916:HOH:O	1.73	0.88
1:B:270:SER:HB3	1:B:338[A]:CYS:SG	2.17	0.85
1:A:165:MET:HE2	1:A:169:CYS:SG	2.20	0.81
1:A:333:ILE:HD11	1:A:391:PHE:HB3	1.62	0.80
1:B:120:GLU:OE2	6:B:1070:HOH:O	1.99	0.79
1:A:163:GLU:HG2	6:A:821:HOH:O	1.80	0.79
1:A:165:MET:HE1	1:A:169:CYS:SG	2.28	0.73
1:B:309:MET:SD	6:B:994:HOH:O	2.47	0.73
1:B:191:MET:SD	6:B:1083:HOH:O	2.49	0.70
1:B:270:SER:CB	1:B:338[A]:CYS:SG	2.83	0.67
1:B:135:ILE:HG12	1:B:140:VAL:HG23	1.76	0.66
1:B:105:ASN:HA	6:B:929:HOH:O	1.96	0.66
1:A:269:SER:HB2	1:A:312:LYS:HE3	1.79	0.65
1:A:340:ILE:HD12	1:A:391:PHE:HZ	1.63	0.62
1:B:165:MET:HE3	1:B:192:TYR:HB2	1.83	0.61
1:A:176:LYS:HG2	1:A:199:ILE:HB	1.84	0.59
1:B:216:LYS:HG3	1:B:252:LEU:O	2.02	0.59
1:B:293:HIS:HD2	1:B:296:TRP:H	1.51	0.58
1:A:113:TYR:OH	1:A:136:HIS:HD2	1.87	0.57
1:A:165:MET:HE3	1:A:189:SER:HA	1.88	0.55
1:B:206:GLU:HG3	1:B:420:ASN:HD21	1.72	0.55
1:B:309:MET:CE	1:B:402:ILE:HD11	2.36	0.55
1:A:191:MET:HE2	1:A:192:TYR:CE2	2.42	0.54
1:B:165:MET:HE3	1:B:192:TYR:CB	2.37	0.54
1:B:346:PHE:CE2	1:B:352:ILE:HD12	2.42	0.54
1:B:293:HIS:CD2	1:B:296:TRP:H	2.26	0.53
1:B:309:MET:HG3	1:B:399:PHE:CD1	2.44	0.53
1:A:206:GLU:HG3	1:A:420:ASN:HD21	1.75	0.52
1:A:114:VAL:HG22	1:A:121:LEU:HD22	1.91	0.52
1:B:104:GLU:HB2	6:B:930:HOH:O	2.10	0.51
1:B:235:SER:O	1:B:239:GLN:HG3	2.10	0.51
1:B:309:MET:HE1	1:B:399:PHE:CD2	2.45	0.51
1:A:234:HIS:HE1	1:A:315:GLU:HG2	1.76	0.51

Continued on next page...

Continued from previous page...

Atom-1	Atom-2	Interatomic distance (Å)	Clash overlap (Å)
1:A:99:GLU:HG2	6:A:1051:HOH:O	2.10	0.50
1:A:206:GLU:CG	1:A:420:ASN:HD21	2.25	0.49
1:B:166:LYS:HE2	1:B:192:TYR:CZ	2.46	0.49
1:A:420:ASN:O	1:A:424:GLU:HG3	2.12	0.48
1:B:216:LYS:HE2	6:B:1058:HOH:O	2.12	0.48
1:A:270:SER:CB	1:A:338[A]:CYS:SG	3.02	0.47
1:A:464:MET:HE3	6:A:901:HOH:O	2.13	0.47
1:A:421:ALA:HB3	1:A:474:ALA:HB3	1.96	0.47
1:B:252:LEU:HD22	1:B:322:LEU:HD23	1.96	0.47
1:B:135:ILE:HG12	1:B:140:VAL:CG2	2.45	0.46
1:A:167:GLU:HG2	6:A:924:HOH:O	2.15	0.46
1:A:485:HIS:HE1	6:A:1059:HOH:O	1.98	0.46
1:B:309:MET:HE2	1:B:399:PHE:CB	2.46	0.46
1:A:202:LEU:HD23	1:A:208:ILE:HD11	1.97	0.46
1:A:333:ILE:CD1	1:A:391:PHE:HB3	2.42	0.45
1:B:293:HIS:HD2	1:B:295:LYS:H	1.63	0.45
1:B:86:THR:HG23	1:B:114:VAL:HG11	1.98	0.45
1:B:154:TYR:O	6:B:935:HOH:O	2.21	0.44
1:B:165:MET:C	1:B:165:MET:HE2	2.38	0.44
1:B:340:ILE:HG12	1:B:355:MET:HG2	1.99	0.44
1:A:253:GLN:HG2	6:A:825:HOH:O	2.18	0.44
1:A:136:HIS:HE1	6:A:891:HOH:O	2.00	0.43
1:A:273:PRO:HD2	1:A:307:ALA:HA	1.98	0.43
1:B:81:ALA:HB3	1:B:177:ILE:HG12	1.99	0.43
1:A:197:ASN:HA	1:A:225:ALA:HB2	2.00	0.43
1:B:165:MET:HE2	1:B:165:MET:O	2.19	0.43
1:A:79:ASN:HB3	1:A:110:LYS:HG3	2.01	0.43
1:A:113:TYR:OH	1:A:136:HIS:CD2	2.71	0.43
1:B:392:HIS:HE1	6:B:844:HOH:O	2.01	0.42
1:A:341:HIS:HA	6:A:1014:HOH:O	2.19	0.42
1:B:348:ASP:O	1:B:349:LYS:HB2	2.20	0.42
1:B:309:MET:HE3	1:B:402:ILE:HD11	2.01	0.42
1:A:298:MET:SD	4:A:701:F98:H2A	2.60	0.42
1:B:340:ILE:HD12	1:B:391:PHE:HZ	1.84	0.41
1:A:355:MET:HE3	1:B:340:ILE:HD13	2.01	0.41
1:B:113:TYR:OH	1:B:136:HIS:HD2	2.02	0.41
1:A:282:LEU:O	1:A:285:VAL:HG22	2.21	0.41
1:B:220:ASN:ND2	6:B:1080:HOH:O	2.53	0.41
1:A:98:ARG:NE	1:A:127:GLU:OE1	2.52	0.40
1:A:251:CYS:O	1:A:252:LEU:HB2	2.20	0.40

There are no symmetry-related clashes.

5.3 Torsion angles [i](#)

5.3.1 Protein backbone [i](#)

In the following table, the Percentiles column shows the percent Ramachandran outliers of the chain as a percentile score with respect to all X-ray entries followed by that with respect to entries of similar resolution.

The Analysed column shows the number of residues for which the backbone conformation was analysed, and the total number of residues.

Mol	Chain	Analysed	Favoured	Allowed	Outliers	Percentiles	
1	A	409/488 (84%)	396 (97%)	13 (3%)	0	100	100
1	B	409/488 (84%)	393 (96%)	15 (4%)	1 (0%)	47	46
All	All	818/976 (84%)	789 (96%)	28 (3%)	1 (0%)	51	53

All (1) Ramachandran outliers are listed below:

Mol	Chain	Res	Type
1	B	485	HIS

5.3.2 Protein sidechains [i](#)

In the following table, the Percentiles column shows the percent sidechain outliers of the chain as a percentile score with respect to all X-ray entries followed by that with respect to entries of similar resolution.

The Analysed column shows the number of residues for which the sidechain conformation was analysed, and the total number of residues.

Mol	Chain	Analysed	Rotameric	Outliers	Percentiles	
1	A	378/449 (84%)	365 (97%)	13 (3%)	37	35
1	B	378/449 (84%)	367 (97%)	11 (3%)	42	42
All	All	756/898 (84%)	732 (97%)	24 (3%)	39	38

All (24) residues with a non-rotameric sidechain are listed below:

Mol	Chain	Res	Type
1	A	95	ASN
1	A	105	ASN
1	A	106	VAL
1	A	118	VAL
1	A	138	LYS

Continued on next page...

Continued from previous page...

Mol	Chain	Res	Type
1	A	142	GLU
1	A	152	LYS
1	A	155	LYS
1	A	165	MET
1	A	252	LEU
1	A	253	GLN
1	A	429	LEU
1	A	454	GLN
1	B	108	ASN
1	B	126	ARG
1	B	155	LYS
1	B	163	GLU
1	B	165	MET
1	B	213	PHE
1	B	218	LEU
1	B	333	ILE
1	B	429	LEU
1	B	449	GLU
1	B	453	SER

Sometimes sidechains can be flipped to improve hydrogen bonding and reduce clashes. All (12) such sidechains are listed below:

Mol	Chain	Res	Type
1	A	92	ASN
1	A	136	HIS
1	A	420	ASN
1	A	459	ASN
1	B	92	ASN
1	B	119	ASN
1	B	136	HIS
1	B	150	ASN
1	B	255	ASN
1	B	293	HIS
1	B	392	HIS
1	B	420	ASN

5.3.3 RNA

There are no RNA molecules in this entry.

5.4 Non-standard residues in protein, DNA, RNA chains [i](#)

There are no non-standard protein/DNA/RNA residues in this entry.

5.5 Carbohydrates [i](#)

There are no monosaccharides in this entry.

5.6 Ligand geometry [i](#)

Of 8 ligands modelled in this entry, 4 are monoatomic - leaving 4 for Mogul analysis.

In the following table, the Counts columns list the number of bonds (or angles) for which Mogul statistics could be retrieved, the number of bonds (or angles) that are observed in the model and the number of bonds (or angles) that are defined in the Chemical Component Dictionary. The Link column lists molecule types, if any, to which the group is linked. The Z score for a bond length (or angle) is the number of standard deviations the observed value is removed from the expected value. A bond length (or angle) with $|Z| > 2$ is considered an outlier worth inspection. RMSZ is the root-mean-square of all Z scores of the bond lengths (or angles).

Mol	Type	Chain	Res	Link	Bond lengths			Bond angles		
					Counts	RMSZ	# Z > 2	Counts	RMSZ	# Z > 2
4	F98	A	701	3	10,11,11	2.01	1 (10%)	11,15,15	2.25	3 (27%)
4	F98	B	702	3	10,11,11	2.43	1 (10%)	11,15,15	1.97	2 (18%)
2	NDP	B	502	-	45,52,52	1.50	4 (8%)	53,80,80	1.41	5 (9%)
2	NDP	A	501	-	45,52,52	1.62	4 (8%)	53,80,80	1.23	3 (5%)

In the following table, the Chirals column lists the number of chiral outliers, the number of chiral centers analysed, the number of these observed in the model and the number defined in the Chemical Component Dictionary. Similar counts are reported in the Torsion and Rings columns. '-' means no outliers of that kind were identified.

Mol	Type	Chain	Res	Link	Chirals	Torsions	Rings
4	F98	A	701	3	-	7/11/11/11	-
4	F98	B	702	3	-	2/11/11/11	-
2	NDP	B	502	-	-	5/30/77/77	0/5/5/5
2	NDP	A	501	-	-	6/30/77/77	0/5/5/5

All (10) bond length outliers are listed below:

Mol	Chain	Res	Type	Atoms	Z	Observed(Å)	Ideal(Å)
4	B	702	F98	PA1-C4	-7.34	1.71	1.78

Continued on next page...

Continued from previous page...

Mol	Chain	Res	Type	Atoms	Z	Observed(Å)	Ideal(Å)
2	A	501	NDP	O7N-C7N	6.56	1.40	1.24
2	B	502	NDP	O7N-C7N	6.28	1.39	1.24
4	A	701	F98	PA1-C4	-5.82	1.73	1.78
2	A	501	NDP	C2A-N3A	4.35	1.39	1.32
2	A	501	NDP	C6N-C5N	3.91	1.40	1.33
2	B	502	NDP	C2A-N3A	3.81	1.38	1.32
2	B	502	NDP	C6N-C5N	3.19	1.39	1.33
2	A	501	NDP	C2A-N1A	2.67	1.38	1.33
2	B	502	NDP	C2A-N1A	2.31	1.38	1.33

All (13) bond angle outliers are listed below:

Mol	Chain	Res	Type	Atoms	Z	Observed(°)	Ideal(°)
2	B	502	NDP	N3A-C2A-N1A	-6.63	118.32	128.68
2	A	501	NDP	N3A-C2A-N1A	-5.09	120.73	128.68
4	B	702	F98	C3-C2-N1	-5.05	100.59	111.06
4	A	701	F98	C3-C2-N1	-4.70	101.30	111.06
4	A	701	F98	OP2-PA1-C4	-4.14	103.74	111.40
2	A	501	NDP	C3N-C7N-N7N	3.12	123.20	117.67
4	B	702	F98	OP2-PA1-C4	-2.92	106.00	111.40
2	B	502	NDP	C3N-C7N-N7N	2.81	122.66	117.67
4	A	701	F98	PA1-C4-C3	2.70	118.37	114.98
2	B	502	NDP	PN-O3-PA	-2.66	123.71	132.83
2	A	501	NDP	C1B-N9A-C4A	-2.64	122.00	126.64
2	B	502	NDP	O7N-C7N-C3N	-2.32	116.53	120.90
2	B	502	NDP	C3N-C2N-N1N	-2.11	120.08	123.10

There are no chirality outliers.

All (20) torsion outliers are listed below:

Mol	Chain	Res	Type	Atoms
4	A	701	F98	N1-C2-C3-C4
4	A	701	F98	C3-C4-PA1-OP1
4	A	701	F98	C3-C4-PA1-OP2
4	A	701	F98	C3-C4-PA1-OP3
2	B	502	NDP	O4D-C1D-N1N-C6N
2	A	501	NDP	O4D-C1D-N1N-C6N
2	A	501	NDP	PN-O3-PA-O1A
2	B	502	NDP	PN-O3-PA-O1A
2	B	502	NDP	PN-O3-PA-O2A
4	A	701	F98	C3-C2-N1-O2
2	A	501	NDP	C2B-O2B-P2B-O2X

Continued on next page...

Continued from previous page...

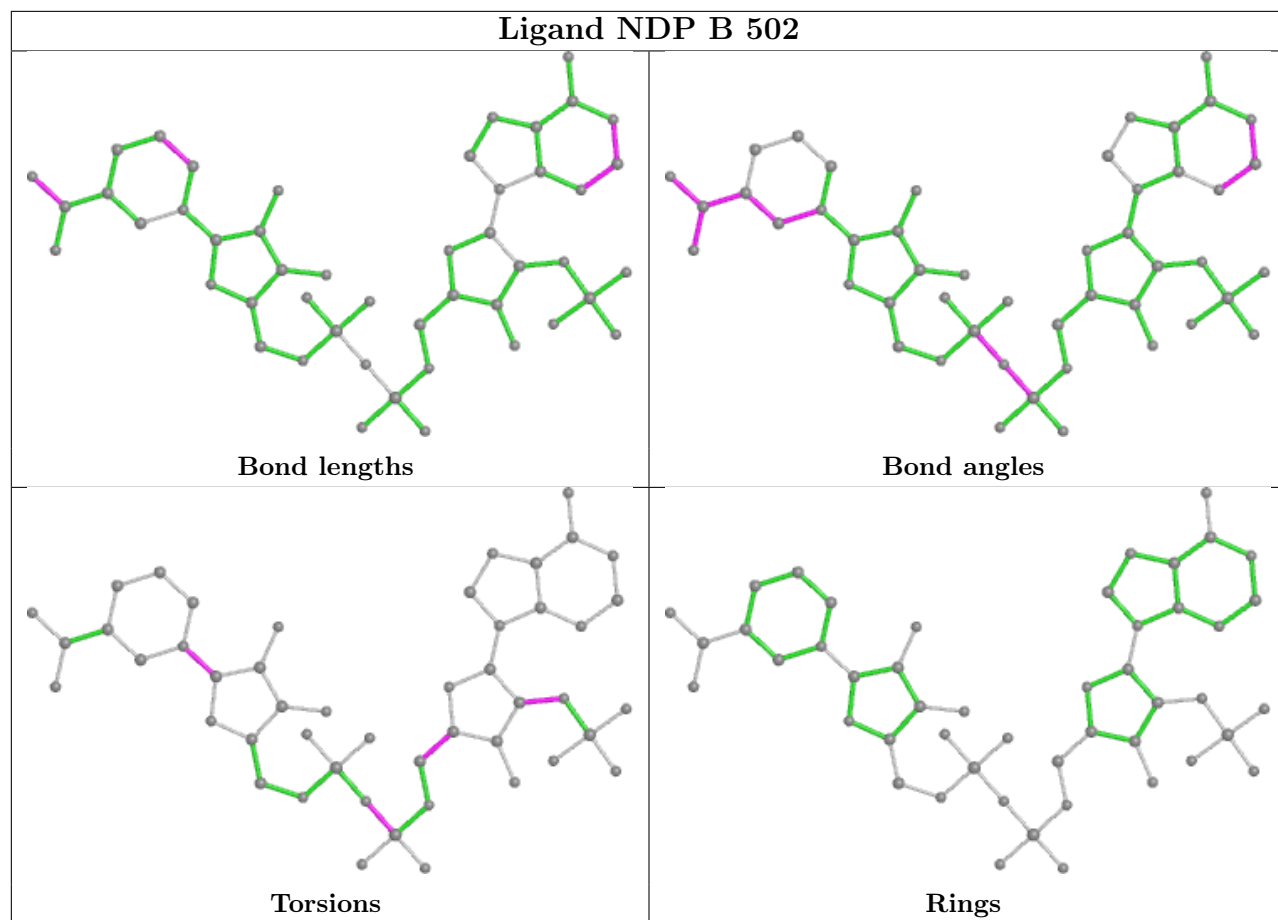
Mol	Chain	Res	Type	Atoms
4	A	701	F98	C11-C1-N1-O2
4	B	702	F98	C11-C1-N1-O2
2	A	501	NDP	O4B-C4B-C5B-O5B
2	A	501	NDP	PN-O3-PA-O2A
4	A	701	F98	O1-C1-N1-O2
4	B	702	F98	O1-C1-N1-O2
2	B	502	NDP	C1B-C2B-O2B-P2B
2	A	501	NDP	C5B-O5B-PA-O1A
2	B	502	NDP	O4B-C4B-C5B-O5B

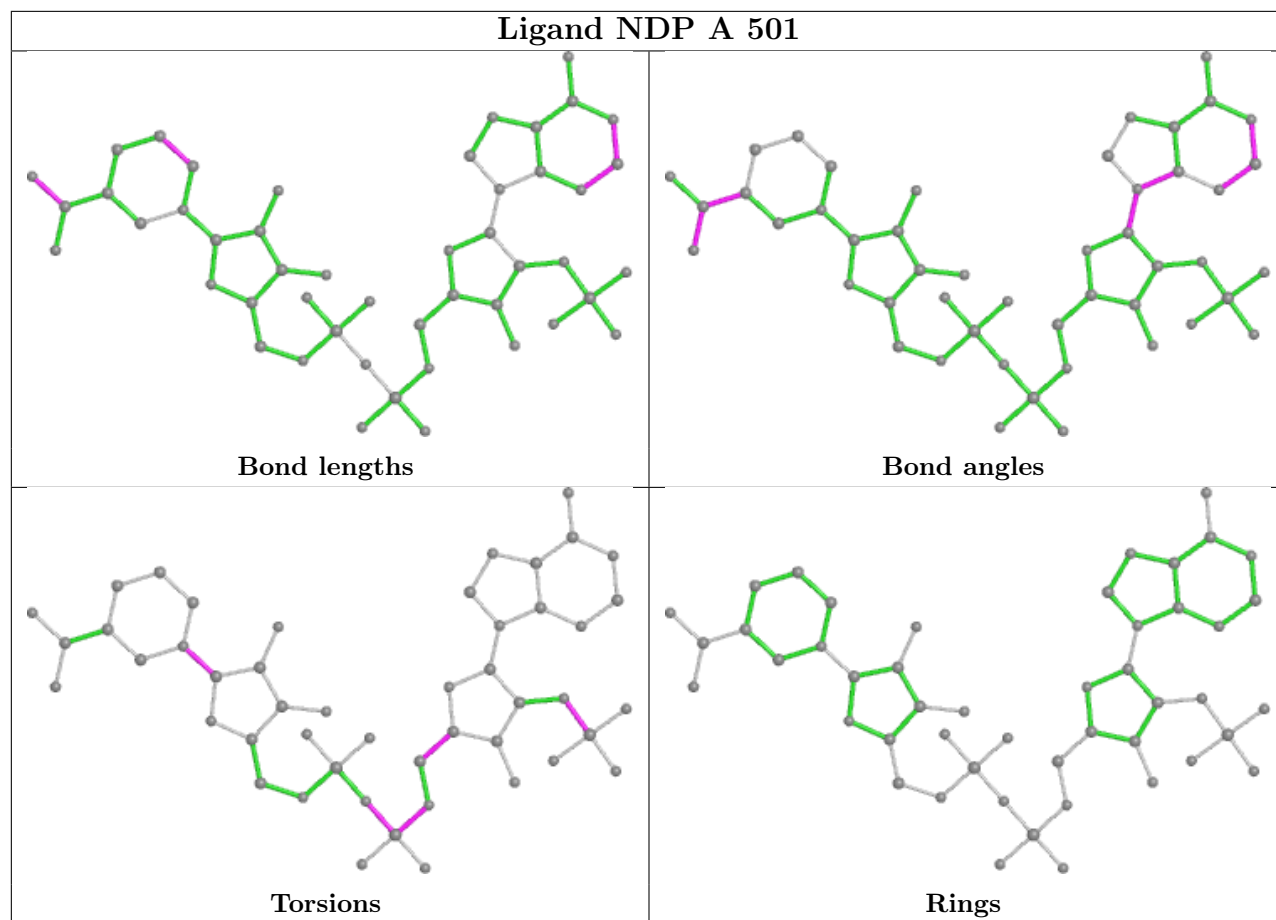
There are no ring outliers.

1 monomer is involved in 1 short contact:

Mol	Chain	Res	Type	Clashes	Symm-Clashes
4	A	701	F98	1	0

The following is a two-dimensional graphical depiction of Mogul quality analysis of bond lengths, bond angles, torsion angles, and ring geometry for all instances of the Ligand of Interest. In addition, ligands with molecular weight > 250 and outliers as shown on the validation Tables will also be included. For torsion angles, if less than 5% of the Mogul distribution of torsion angles is within 10 degrees of the torsion angle in question, then that torsion angle is considered an outlier. Any bond that is central to one or more torsion angles identified as an outlier by Mogul will be highlighted in the graph. For rings, the root-mean-square deviation (RMSD) between the ring in question and similar rings identified by Mogul is calculated over all ring torsion angles. If the average RMSD is greater than 60 degrees and the minimal RMSD between the ring in question and any Mogul-identified rings is also greater than 60 degrees, then that ring is considered an outlier. The outliers are highlighted in purple. The color gray indicates Mogul did not find sufficient equivalents in the CSD to analyse the geometry.





5.7 Other polymers [\(i\)](#)

There are no such residues in this entry.

5.8 Polymer linkage issues [\(i\)](#)

There are no chain breaks in this entry.

6 Fit of model and data [i](#)

6.1 Protein, DNA and RNA chains [i](#)

In the following table, the column labelled ‘#RSRZ > 2’ contains the number (and percentage) of RSRZ outliers, followed by percent RSRZ outliers for the chain as percentile scores relative to all X-ray entries and entries of similar resolution. The OWAB column contains the minimum, median, 95th percentile and maximum values of the occupancy-weighted average B-factor per residue. The column labelled ‘Q < 0.9’ lists the number of (and percentage) of residues with an average occupancy less than 0.9.

Mol	Chain	Analysed	<RSRZ>	#RSRZ>2	OWAB(Å ²)	Q<0.9
1	A	410/488 (84%)	-0.12	4 (0%) 82 86	14, 25, 41, 53	0
1	B	410/488 (84%)	-0.10	7 (1%) 70 76	14, 23, 40, 57	0
All	All	820/976 (84%)	-0.11	11 (1%) 77 82	14, 24, 41, 57	0

All (11) RSRZ outliers are listed below:

Mol	Chain	Res	Type	RSRZ
1	A	151	ILE	3.6
1	B	152	LYS	3.5
1	B	153	ASP	3.5
1	B	486	ASN	3.0
1	B	126	ARG	2.9
1	B	485	HIS	2.7
1	A	153	ASP	2.4
1	A	152	LYS	2.4
1	A	485	HIS	2.2
1	B	155	LYS	2.0
1	B	484	LYS	2.0

6.2 Non-standard residues in protein, DNA, RNA chains [i](#)

There are no non-standard protein/DNA/RNA residues in this entry.

6.3 Carbohydrates [i](#)

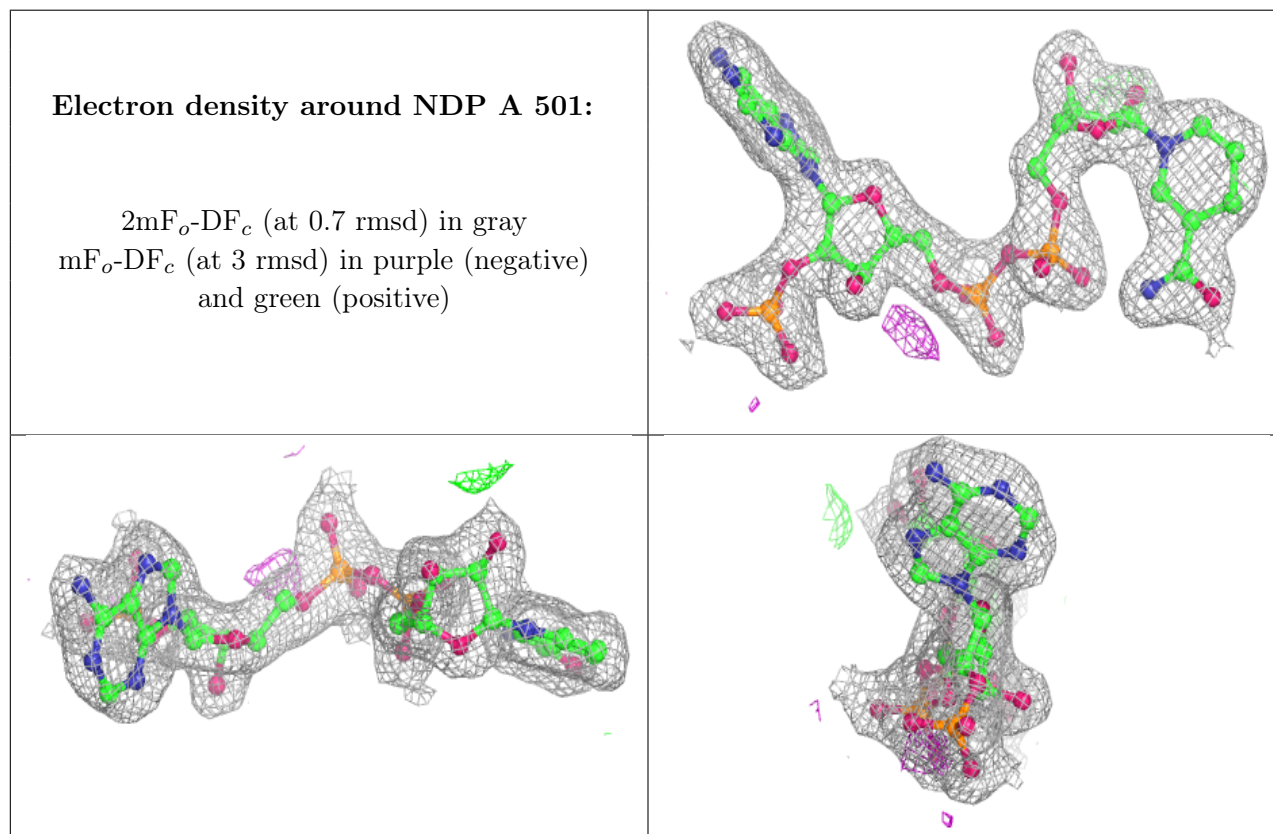
There are no monosaccharides in this entry.

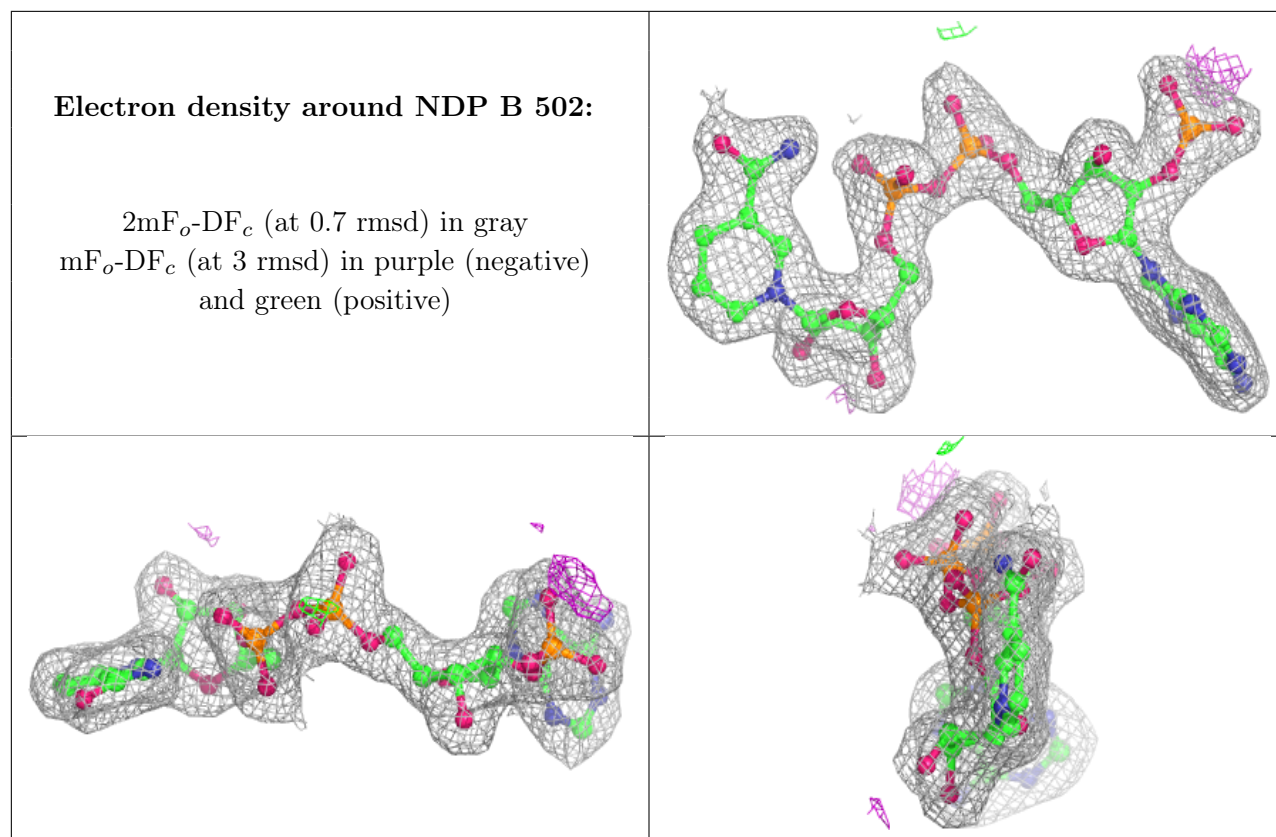
6.4 Ligands [i](#)

In the following table, the Atoms column lists the number of modelled atoms in the group and the number defined in the chemical component dictionary. The B-factors column lists the minimum, median, 95th percentile and maximum values of B factors of atoms in the group. The column labelled 'Q<0.9' lists the number of atoms with occupancy less than 0.9.

Mol	Type	Chain	Res	Atoms	RSCC	RSR	B-factors(Å ²)	Q<0.9
2	NDP	A	501	48/48	0.98	0.09	16,20,23,25	0
2	NDP	B	502	48/48	0.98	0.09	12,15,19,19	0
3	MG	B	602	1/1	0.98	0.06	18,18,18,18	0
4	F98	A	701	12/12	0.98	0.10	15,19,24,27	0
3	MG	A	601	1/1	0.99	0.07	15,15,15,15	0
4	F98	B	702	12/12	0.99	0.10	16,19,25,26	0
5	CA	B	489	1/1	0.99	0.03	29,29,29,29	0
5	CA	B	490	1/1	0.99	0.07	21,21,21,21	0

The following is a graphical depiction of the model fit to experimental electron density of all instances of the Ligand of Interest. In addition, ligands with molecular weight > 250 and outliers as shown on the geometry validation Tables will also be included. Each fit is shown from different orientation to approximate a three-dimensional view.





6.5 Other polymers [i](#)

There are no such residues in this entry.