



Full wwPDB X-ray Structure Validation Report ⓘ

Sep 28, 2024 – 03:29 PM EDT

PDB ID : 3AH5
Title : Crystal Structure of flavin dependent thymidylate synthase ThyX from helicobacter pylori complexed with FAD and dUMP
Authors : Zhang, X.; Zhang, J.; Hu, Y.; Zou, Q.; Wang, D.
Deposited on : 2010-04-14
Resolution : 2.50 Å(reported)

This is a Full wwPDB X-ray Structure Validation Report for a publicly released PDB entry.

We welcome your comments at validation@mail.wwpdb.org

A user guide is available at

<https://www.wwpdb.org/validation/2017/XrayValidationReportHelp>

with specific help available everywhere you see the ⓘ symbol.

The types of validation reports are described at

<http://www.wwpdb.org/validation/2017/FAQs#types>.

The following versions of software and data (see [references ⓘ](#)) were used in the production of this report:

MolProbity : 4.02b-467
Mogul : 2022.3.0, CSD as543be (2022)
Xtrriage (Phenix) : 1.20.1
EDS : 3.0
buster-report : 1.1.7 (2018)
Percentile statistics : 20231227.v01 (using entries in the PDB archive December 27th 2023)
CCP4 : 9.0.003 (Gargrove)
Density-Fitness : 1.0.11
Ideal geometry (proteins) : Engh & Huber (2001)
Ideal geometry (DNA, RNA) : Parkinson et al. (1996)
Validation Pipeline (wwPDB-VP) : 2.39

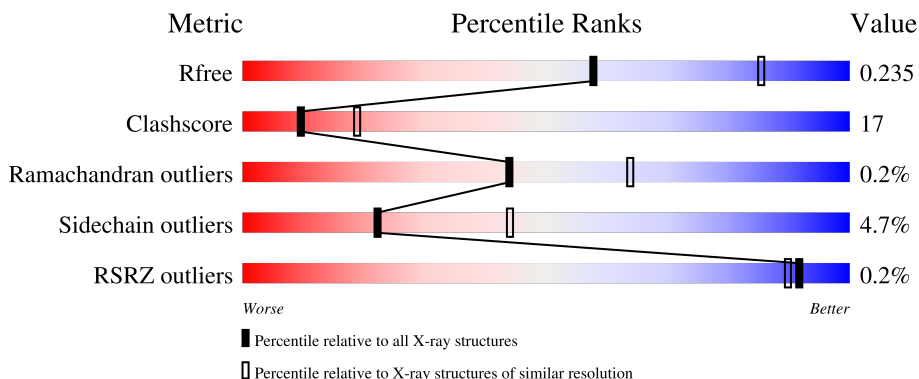
1 Overall quality at a glance i

The following experimental techniques were used to determine the structure:

X-RAY DIFFRACTION

The reported resolution of this entry is 2.50 Å.

Percentile scores (ranging between 0-100) for global validation metrics of the entry are shown in the following graphic. The table shows the number of entries on which the scores are based.




Metric	Whole archive (#Entries)	Similar resolution (#Entries, resolution range(Å))
R_{free}	164625	5504 (2.50-2.50)
Clashscore	180529	6282 (2.50-2.50)
Ramachandran outliers	177936	6191 (2.50-2.50)
Sidechain outliers	177891	6193 (2.50-2.50)
RSRZ outliers	164620	5504 (2.50-2.50)

The table below summarises the geometric issues observed across the polymeric chains and their fit to the electron density. The red, orange, yellow and green segments of the lower bar indicate the fraction of residues that contain outliers for ≥ 3 , 2, 1 and 0 types of geometric quality criteria respectively. A grey segment represents the fraction of residues that are not modelled. The numeric value for each fraction is indicated below the corresponding segment, with a dot representing fractions $\leq 5\%$. The upper red bar (where present) indicates the fraction of residues that have poor fit to the electron density. The numeric value is given above the bar.

Mol	Chain	Length	Quality of chain
1	A	216	 68% 27% 5%
1	B	216	 66% 30% .
1	C	216	 69% 24% . .
1	D	216	 69% 25% . .
1	E	216	 66% 28% . .

Continued on next page...

Continued from previous page...

Mol	Chain	Length	Quality of chain
1	F	216	 66% 27% . .

The following table lists non-polymeric compounds, carbohydrate monomers and non-standard residues in protein, DNA, RNA chains that are outliers for geometric or electron-density-fit criteria:

Mol	Type	Chain	Res	Chirality	Geometry	Clashes	Electron density
2	UMP	C	241	-	-	X	-
4	SO4	E	2	-	-	X	-

2 Entry composition [i](#)

There are 5 unique types of molecules in this entry. The entry contains 11206 atoms, of which 0 are hydrogens and 0 are deuteriums.

In the tables below, the ZeroOcc column contains the number of atoms modelled with zero occupancy, the AltConf column contains the number of residues with at least one atom in alternate conformation and the Trace column contains the number of residues modelled with at most 2 atoms.

- Molecule 1 is a protein called Thymidylate synthase thyX.

Mol	Chain	Residues	Atoms					ZeroOcc	AltConf	Trace
			Total	C	N	O	S			
1	A	215	Total 1760	C 1113	N 313	O 326	S 8	0	0	0
1	B	207	Total 1683	C 1066	N 293	O 316	S 8	0	0	0
1	C	207	Total 1683	C 1066	N 293	O 316	S 8	0	0	0
1	D	207	Total 1683	C 1066	N 293	O 316	S 8	0	0	0
1	E	207	Total 1683	C 1066	N 293	O 316	S 8	0	0	0
1	F	207	Total 1683	C 1066	N 293	O 316	S 8	0	0	0

There are 48 discrepancies between the modelled and reference sequences:

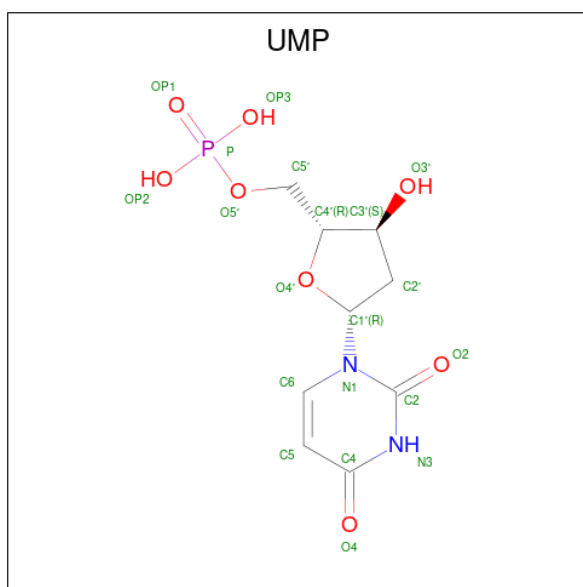
Chain	Residue	Modelled	Actual	Comment	Reference
A	232	LEU	-	expression tag	UNP O26061
A	233	GLU	-	expression tag	UNP O26061
A	234	HIS	-	expression tag	UNP O26061
A	235	HIS	-	expression tag	UNP O26061
A	236	HIS	-	expression tag	UNP O26061
A	237	HIS	-	expression tag	UNP O26061
A	238	HIS	-	expression tag	UNP O26061
A	239	HIS	-	expression tag	UNP O26061
B	232	LEU	-	expression tag	UNP O26061
B	233	GLU	-	expression tag	UNP O26061
B	234	HIS	-	expression tag	UNP O26061
B	235	HIS	-	expression tag	UNP O26061
B	236	HIS	-	expression tag	UNP O26061
B	237	HIS	-	expression tag	UNP O26061
B	238	HIS	-	expression tag	UNP O26061
B	239	HIS	-	expression tag	UNP O26061
C	232	LEU	-	expression tag	UNP O26061

Continued on next page...

Continued from previous page...

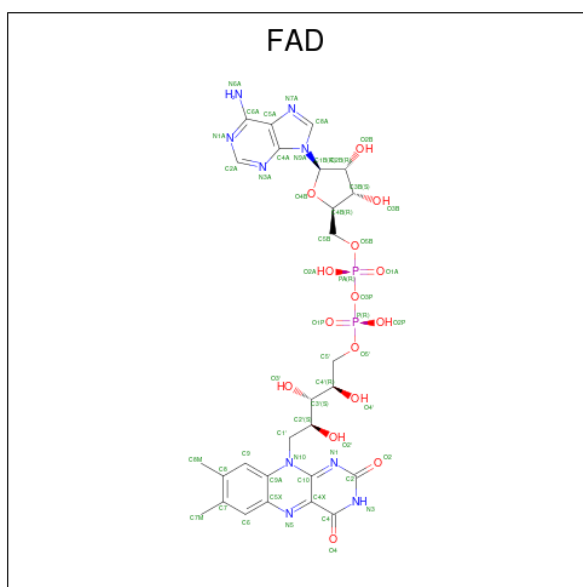
Chain	Residue	Modelled	Actual	Comment	Reference
C	233	GLU	-	expression tag	UNP O26061
C	234	HIS	-	expression tag	UNP O26061
C	235	HIS	-	expression tag	UNP O26061
C	236	HIS	-	expression tag	UNP O26061
C	237	HIS	-	expression tag	UNP O26061
C	238	HIS	-	expression tag	UNP O26061
C	239	HIS	-	expression tag	UNP O26061
D	232	LEU	-	expression tag	UNP O26061
D	233	GLU	-	expression tag	UNP O26061
D	234	HIS	-	expression tag	UNP O26061
D	235	HIS	-	expression tag	UNP O26061
D	236	HIS	-	expression tag	UNP O26061
D	237	HIS	-	expression tag	UNP O26061
D	238	HIS	-	expression tag	UNP O26061
D	239	HIS	-	expression tag	UNP O26061
E	232	LEU	-	expression tag	UNP O26061
E	233	GLU	-	expression tag	UNP O26061
E	234	HIS	-	expression tag	UNP O26061
E	235	HIS	-	expression tag	UNP O26061
E	236	HIS	-	expression tag	UNP O26061
E	237	HIS	-	expression tag	UNP O26061
E	238	HIS	-	expression tag	UNP O26061
E	239	HIS	-	expression tag	UNP O26061
F	232	LEU	-	expression tag	UNP O26061
F	233	GLU	-	expression tag	UNP O26061
F	234	HIS	-	expression tag	UNP O26061
F	235	HIS	-	expression tag	UNP O26061
F	236	HIS	-	expression tag	UNP O26061
F	237	HIS	-	expression tag	UNP O26061
F	238	HIS	-	expression tag	UNP O26061
F	239	HIS	-	expression tag	UNP O26061

- Molecule 2 is 2'-DEOXYURIDINE 5'-MONOPHOSPHATE (three-letter code: UMP) (formula: C₉H₁₃N₂O₈P).



Mol	Chain	Residues	Atoms					ZeroOcc	AltConf
			Total	C	N	O	P		
2	A	1	Total	C	N	O	P	0	0
			20	9	2	8	1		
2	B	1	Total	C	N	O	P	0	0
			20	9	2	8	1		
2	C	1	Total	C	N	O	P	0	0
			20	9	2	8	1		
2	D	1	Total	C	N	O	P	0	0
			20	9	2	8	1		
2	E	1	Total	C	N	O	P	0	0
			20	9	2	8	1		
2	F	1	Total	C	N	O	P	0	0
			20	9	2	8	1		

- Molecule 3 is FLAVIN-ADENINE DINUCLEOTIDE (three-letter code: FAD) (formula: $C_{27}H_{33}N_9O_{15}P_2$).



Mol	Chain	Residues	Atoms				ZeroOcc	AltConf	
			Total	C	N	O			P
3	A	1	Total	C	N	O	P	0	0
			53	27	9	15	2		
3	B	1	Total	C	N	O	P	0	0
			53	27	9	15	2		
3	C	1	Total	C	N	O	P	0	0
			53	27	9	15	2		
3	D	1	Total	C	N	O	P	0	0
			53	27	9	15	2		
3	E	1	Total	C	N	O	P	0	0
			53	27	9	15	2		
3	F	1	Total	C	N	O	P	0	0
			53	27	9	15	2		

- Molecule 4 is SULFATE ION (three-letter code: SO4) (formula: O₄S).



Mol	Chain	Residues	Atoms			ZeroOcc	AltConf
4	A	1	Total	O	S	0	0
			5	4	1		
4	A	1	Total	O	S	0	0
			5	4	1		
4	A	1	Total	O	S	0	0
			5	4	1		
4	C	1	Total	O	S	0	0
			5	4	1		
4	C	1	Total	O	S	0	0
			5	4	1		
4	C	1	Total	O	S	0	0
			5	4	1		
4	D	1	Total	O	S	0	0
			5	4	1		
4	D	1	Total	O	S	0	0
			5	4	1		
4	E	1	Total	O	S	0	0
			5	4	1		
4	E	1	Total	O	S	0	0
			5	4	1		
4	F	1	Total	O	S	0	0
			5	4	1		

- Molecule 5 is water.

Mol	Chain	Residues	Atoms		ZeroOcc	AltConf
5	A	98	Total	O	0	0
			98	98		

Continued on next page...

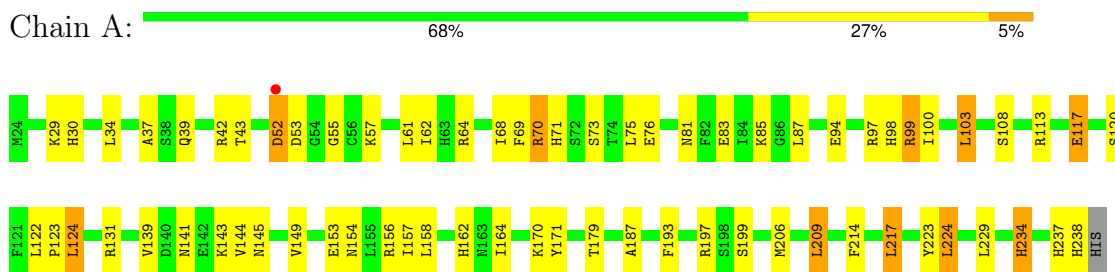
Continued from previous page...

Mol	Chain	Residues	Atoms		ZeroOcc	AltConf
5	B	98	Total 98	O 98	0	0
5	C	112	Total 112	O 112	0	0
5	D	84	Total 84	O 84	0	0
5	E	74	Total 74	O 74	0	0
5	F	72	Total 72	O 72	0	0

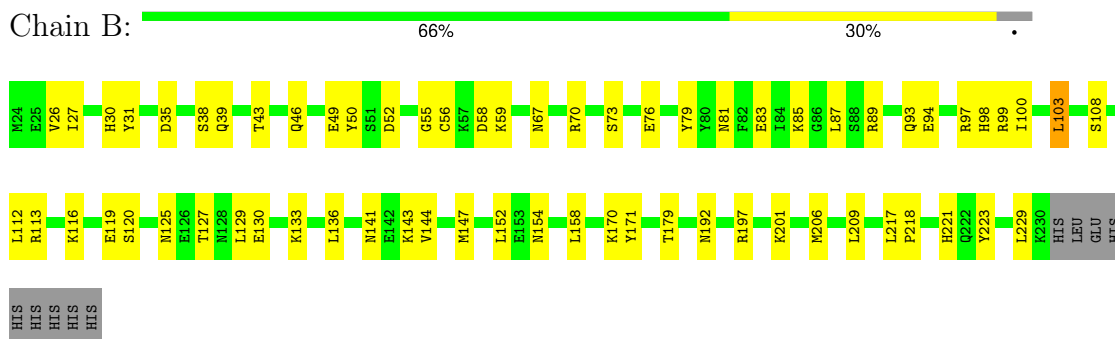
3 Residue-property plots

These plots are drawn for all protein, RNA, DNA and oligosaccharide chains in the entry. The first graphic for a chain summarises the proportions of the various outlier classes displayed in the second graphic. The second graphic shows the sequence view annotated by issues in geometry and electron density. Residues are color-coded according to the number of geometric quality criteria for which they contain at least one outlier: green = 0, yellow = 1, orange = 2 and red = 3 or more. A red dot above a residue indicates a poor fit to the electron density ($RSRZ > 2$). Stretches of 2 or more consecutive residues without any outlier are shown as a green connector. Residues present in the sample, but not in the model, are shown in grey.

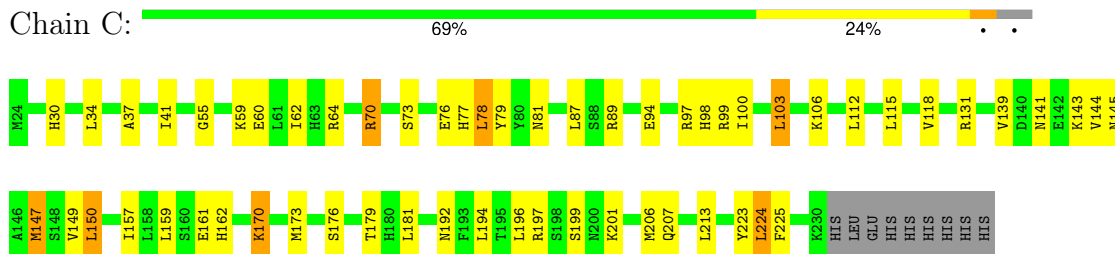
- Molecule 1: Thymidylate synthase thyX



- Molecule 1: Thymidylate synthase thyX

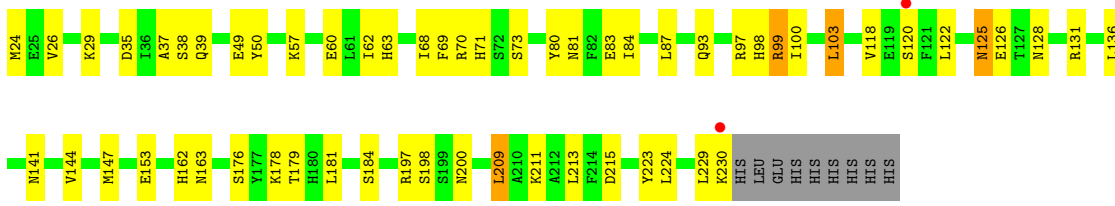


- Molecule 1: Thymidylate synthase thyX

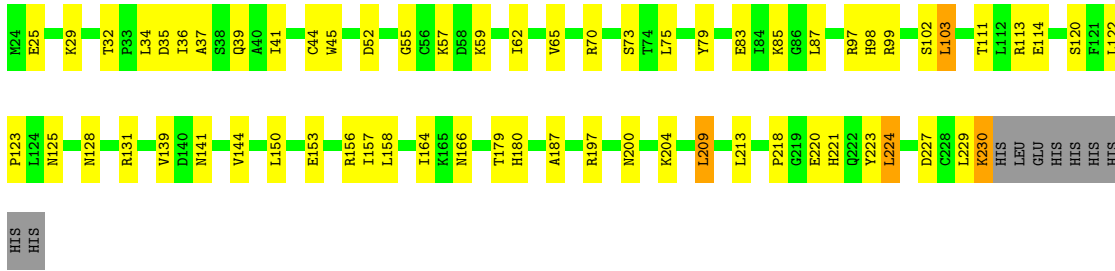


- Molecule 1: Thymidylate synthase thyX

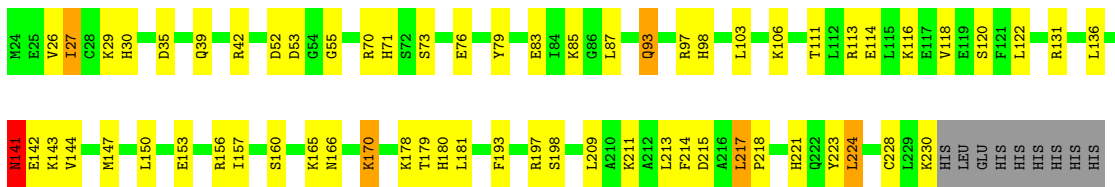




● Molecule 1: Thymidylate synthase thyX



● Molecule 1: Thymidylate synthase thyX



4 Data and refinement statistics

Property	Value	Source
Space group	C 1 2 1	Depositor
Cell constants a, b, c, α , β , γ	221.92Å 49.43Å 143.02Å 90.00° 98.84° 90.00°	Depositor
Resolution (Å)	55.63 – 2.50 55.63 – 2.50	Depositor EDS
% Data completeness (in resolution range)	99.8 (55.63-2.50) 99.7 (55.63-2.50)	Depositor EDS
R_{merge}	0.11	Depositor
R_{sym}	0.11	Depositor
$\langle I/\sigma(I) \rangle$ ¹	3.39 (at 2.50Å)	Xtrriage
Refinement program	CNS	Depositor
R, R_{free}	0.194 , 0.246 0.183 , 0.235	Depositor DCC
R_{free} test set	5207 reflections (9.68%)	wwPDB-VP
Wilson B-factor (Å ²)	34.4	Xtrriage
Anisotropy	0.256	Xtrriage
Bulk solvent k_{sol} (e/Å ³), B_{sol} (Å ²)	0.37 , 51.1	EDS
L-test for twinning ²	$\langle L \rangle = 0.50$, $\langle L^2 \rangle = 0.33$	Xtrriage
Estimated twinning fraction	No twinning to report.	Xtrriage
F_o, F_c correlation	0.94	EDS
Total number of atoms	11206	wwPDB-VP
Average B, all atoms (Å ²)	33.0	wwPDB-VP

Xtrriage's analysis on translational NCS is as follows: *The largest off-origin peak in the Patterson function is 4.98% of the height of the origin peak. No significant pseudotranslation is detected.*

¹Intensities estimated from amplitudes.

²Theoretical values of $\langle |L| \rangle$, $\langle L^2 \rangle$ for acentric reflections are 0.5, 0.333 respectively for untwinned datasets, and 0.375, 0.2 for perfectly twinned datasets.

5 Model quality

5.1 Standard geometry

Bond lengths and bond angles in the following residue types are not validated in this section: FAD, UMP, SO4

The Z score for a bond length (or angle) is the number of standard deviations the observed value is removed from the expected value. A bond length (or angle) with $|Z| > 5$ is considered an outlier worth inspection. RMSZ is the root-mean-square of all Z scores of the bond lengths (or angles).

Mol	Chain	Bond lengths		Bond angles	
		RMSZ	# Z >5	RMSZ	# Z >5
1	A	0.34	0/1797	0.60	0/2420
1	B	0.35	0/1714	0.59	0/2307
1	C	0.35	0/1714	0.60	0/2307
1	D	0.33	0/1714	0.60	0/2307
1	E	0.33	0/1714	0.57	0/2307
1	F	0.32	0/1714	0.56	0/2307
All	All	0.34	0/10367	0.59	0/13955

There are no bond length outliers.

There are no bond angle outliers.

There are no chirality outliers.

There are no planarity outliers.

5.2 Too-close contacts

In the following table, the Non-H and H(model) columns list the number of non-hydrogen atoms and hydrogen atoms in the chain respectively. The H(added) column lists the number of hydrogen atoms added and optimized by MolProbity. The Clashes column lists the number of clashes within the asymmetric unit, whereas Symm-Clashes lists symmetry-related clashes.

Mol	Chain	Non-H	H(model)	H(added)	Clashes	Symm-Clashes
1	A	1760	0	1740	87	0
1	B	1683	0	1681	62	0
1	C	1683	0	1681	73	0
1	D	1683	0	1681	65	0
1	E	1683	0	1681	54	0
1	F	1683	0	1681	58	0
2	A	20	0	11	6	0

Continued on next page...

Continued from previous page...

Mol	Chain	Non-H	H(model)	H(added)	Clashes	Symm-Clashes
2	B	20	0	11	6	0
2	C	20	0	11	7	0
2	D	20	0	11	6	0
2	E	20	0	11	4	0
2	F	20	0	11	6	0
3	A	53	0	31	9	0
3	B	53	0	31	8	0
3	C	53	0	31	7	0
3	D	53	0	31	9	0
3	E	53	0	31	3	0
3	F	53	0	31	3	0
4	A	15	0	0	0	0
4	C	15	0	0	0	0
4	D	10	0	0	0	0
4	E	10	0	0	4	0
4	F	5	0	0	0	0
5	A	98	0	0	7	0
5	B	98	0	0	7	0
5	C	112	0	0	1	0
5	D	84	0	0	3	0
5	E	74	0	0	1	1
5	F	72	0	0	2	1
All	All	11206	0	10397	368	1

The all-atom clashscore is defined as the number of clashes found per 1000 atoms (including hydrogen atoms). The all-atom clashscore for this structure is 17.

All (368) close contacts within the same asymmetric unit are listed below, sorted by their clash magnitude.

Atom-1	Atom-2	Interatomic distance (Å)	Clash overlap (Å)
1:E:97:ARG:HG3	2:E:241:UMP:H2''	1.38	1.02
2:A:241:UMP:H2''	1:C:97:ARG:HG3	1.43	1.01
1:B:97:ARG:HG3	2:D:241:UMP:H2''	1.41	1.01
1:A:197:ARG:HH12	2:C:241:UMP:HN3	0.97	0.97
1:B:197:ARG:HH12	2:D:241:UMP:HN3	1.09	0.95
1:D:125:ASN:ND2	1:D:128:ASN:H	1.67	0.93
2:B:241:UMP:H2''	1:D:97:ARG:HG3	1.51	0.93
1:F:197:ARG:HH12	2:F:241:UMP:HN3	1.12	0.92
1:E:197:ARG:HH12	2:E:241:UMP:HN3	1.12	0.91
1:A:30:HIS:HB3	1:A:81:ASN:HD22	1.34	0.91
1:A:97:ARG:HG3	2:C:241:UMP:H2''	1.51	0.90

Continued on next page...

Continued from previous page...

Atom-1	Atom-2	Interatomic distance (Å)	Clash overlap (Å)
2:B:241:UMP:HN3	1:D:197:ARG:HH12	1.20	0.89
1:C:99:ARG:HG3	1:C:99:ARG:HH11	1.37	0.88
1:F:97:ARG:HG3	2:F:241:UMP:H2''	1.53	0.87
1:F:98:HIS:HE1	1:F:197:ARG:HE	1.18	0.87
1:A:154:ASN:HB3	1:C:147:MET:HG3	1.58	0.86
1:F:29:LYS:HD2	1:F:83:GLU:HB2	1.58	0.85
1:B:98:HIS:HE1	1:B:197:ARG:HE	1.22	0.85
1:C:98:HIS:HE1	1:C:197:ARG:HE	1.26	0.84
2:A:241:UMP:HN3	1:C:197:ARG:HH12	1.27	0.83
1:F:141:ASN:HD21	1:F:143:LYS:HB2	1.44	0.82
1:A:69:PHE:HZ	1:B:192:ASN:HD21	1.29	0.79
3:F:240:FAD:H51A	3:F:240:FAD:H8A	1.66	0.78
3:B:240:FAD:H51A	3:B:240:FAD:H8A	1.64	0.78
1:B:30:HIS:HB3	1:B:81:ASN:HD22	1.48	0.78
1:D:98:HIS:HE1	1:D:197:ARG:HE	1.32	0.78
3:D:240:FAD:H51A	3:D:240:FAD:H8A	1.66	0.77
3:E:240:FAD:H51A	3:E:240:FAD:H8A	1.67	0.77
5:B:535:HOH:O	1:C:77:HIS:HA	1.84	0.77
3:C:240:FAD:H8A	3:C:240:FAD:H51A	1.67	0.76
1:B:46:GLN:HG3	1:C:106:LYS:HE2	1.67	0.75
1:E:29:LYS:HE2	1:E:83:GLU:HB2	1.69	0.75
1:A:99:ARG:O	1:C:99:ARG:HD2	1.87	0.74
1:F:27:ILE:CD1	1:F:83:GLU:HB3	2.18	0.73
1:A:141:ASN:O	1:A:144:VAL:HG22	1.89	0.73
1:A:197:ARG:NH1	2:C:241:UMP:HN3	1.80	0.73
1:E:35:ASP:O	1:E:39:GLN:HG3	1.88	0.73
1:F:27:ILE:HD11	1:F:83:GLU:HB3	1.71	0.72
1:A:97:ARG:CG	2:C:241:UMP:H2''	2.19	0.72
1:A:237:HIS:O	1:A:238:HIS:HB2	1.88	0.72
1:B:99:ARG:HB3	1:D:99:ARG:HB2	1.71	0.72
1:F:98:HIS:CE1	1:F:197:ARG:HE	2.05	0.72
1:D:125:ASN:C	1:D:125:ASN:HD22	1.94	0.71
1:A:29:LYS:HE3	1:D:39:GLN:OE1	1.90	0.71
1:C:34:LEU:HD12	1:C:59:LYS:HE3	1.73	0.70
1:D:100:ILE:HD12	3:D:240:FAD:H52A	1.72	0.70
1:E:123:PRO:HA	4:E:2:SO4:O1	1.91	0.70
3:A:240:FAD:H51A	3:A:240:FAD:H8A	1.72	0.70
1:E:98:HIS:HE1	1:E:197:ARG:HE	1.38	0.70
1:D:99:ARG:HG2	3:D:240:FAD:O2A	1.91	0.70
1:A:154:ASN:HB3	1:C:147:MET:CG	2.23	0.69
1:B:100:ILE:HD12	3:B:240:FAD:H52A	1.75	0.69

Continued on next page...

Continued from previous page...

Atom-1	Atom-2	Interatomic distance (Å)	Clash overlap (Å)
1:C:99:ARG:HG3	1:C:99:ARG:NH1	2.08	0.68
1:E:120:SER:HA	1:E:156:ARG:HE	1.58	0.68
1:D:125:ASN:HD21	1:D:128:ASN:H	1.41	0.68
1:A:83:GLU:OE2	1:A:85:LYS:HE3	1.94	0.68
1:A:158:LEU:HD13	1:C:144:VAL:HG12	1.75	0.68
1:C:98:HIS:CE1	1:C:197:ARG:HE	2.10	0.68
1:F:223:TYR:CE1	1:F:224:LEU:HD13	2.29	0.68
1:A:39:GLN:NE2	1:D:29:LYS:HE3	2.09	0.67
1:A:98:HIS:HE1	1:A:197:ARG:HE	1.40	0.67
1:D:100:ILE:CD1	3:D:240:FAD:H52A	2.24	0.67
1:B:49:GLU:HG3	1:B:50:TYR:CD1	2.29	0.67
1:E:83:GLU:OE1	1:E:85:LYS:HE3	1.93	0.67
1:A:29:LYS:HD2	1:A:83:GLU:HB2	1.74	0.67
1:B:98:HIS:CE1	1:B:197:ARG:HE	2.10	0.66
2:A:241:UMP:H2''	1:C:97:ARG:CG	2.23	0.66
1:A:214:PHE:O	1:A:217:LEU:HB2	1.95	0.66
1:A:69:PHE:HZ	1:B:192:ASN:ND2	1.94	0.66
1:D:38:SER:N	1:D:62:ILE:HD11	2.11	0.65
1:A:100:ILE:HD12	3:A:240:FAD:H52A	1.79	0.65
3:A:240:FAD:HM73	1:B:70:ARG:HD2	1.78	0.65
1:A:103:LEU:N	1:A:103:LEU:HD23	2.12	0.65
1:B:100:ILE:CD1	3:B:240:FAD:H52A	2.27	0.65
1:A:52:ASP:HB3	1:A:55:GLY:H	1.61	0.64
1:C:37:ALA:HB2	1:C:78:LEU:HD13	1.78	0.64
1:C:100:ILE:O	1:C:100:ILE:HG22	1.97	0.64
1:E:70:ARG:HD3	3:E:240:FAD:HM73	1.80	0.64
2:B:241:UMP:H2''	1:D:97:ARG:CG	2.27	0.64
1:D:29:LYS:HD2	1:D:83:GLU:HB2	1.79	0.64
1:D:98:HIS:CE1	1:D:197:ARG:HE	2.16	0.63
1:F:35:ASP:O	1:F:39:GLN:HG3	1.98	0.63
1:B:35:ASP:O	1:B:39:GLN:HG3	1.99	0.63
1:E:220:GLU:HG3	1:E:221:HIS:HD2	1.63	0.63
1:F:166:ASN:O	1:F:170:LYS:HG3	1.99	0.63
1:C:76:GLU:OE1	1:D:99:ARG:NH2	2.32	0.62
1:B:97:ARG:CG	2:D:241:UMP:H2''	2.23	0.62
1:F:153:GLU:O	1:F:157:ILE:HG12	1.99	0.62
1:A:99:ARG:HG2	3:A:240:FAD:O2A	2.00	0.61
1:E:32:THR:HG23	1:E:36:ILE:HD12	1.81	0.61
1:C:100:ILE:HD13	3:C:240:FAD:H52A	1.82	0.61
1:C:73:SER:HB3	3:D:240:FAD:O4'	1.99	0.61
1:E:120:SER:HB2	1:E:156:ARG:HH21	1.66	0.61

Continued on next page...

Continued from previous page...

Atom-1	Atom-2	Interatomic distance (Å)	Clash overlap (Å)
1:A:120:SER:HA	1:A:156:ARG:HE	1.66	0.61
1:B:83:GLU:OE2	1:B:85:LYS:HE3	2.01	0.61
1:A:99:ARG:HD3	5:A:6:HOH:O	2.00	0.60
1:B:49:GLU:HG3	1:B:50:TYR:HD1	1.65	0.60
1:E:97:ARG:CG	2:E:241:UMP:H2''	2.23	0.60
1:A:139:VAL:CG2	1:A:144:VAL:HG21	2.31	0.60
1:A:87:LEU:O	1:A:179:THR:HG22	2.02	0.59
1:A:76:GLU:OE1	1:B:99:ARG:NH2	2.33	0.59
1:E:230:LYS:HE3	1:E:230:LYS:N	2.18	0.59
1:C:89:ARG:HH22	2:C:241:UMP:H5''	1.67	0.59
1:C:89:ARG:NH2	2:C:241:UMP:OP3	2.35	0.59
1:A:113:ARG:HG3	5:A:412:HOH:O	2.01	0.59
2:A:241:UMP:C2'	1:C:97:ARG:HG3	2.26	0.59
1:F:106:LYS:HG2	1:F:180:HIS:H	1.68	0.59
1:C:141:ASN:O	1:C:144:VAL:HG22	2.03	0.58
3:A:240:FAD:O4'	1:B:73:SER:HB3	2.03	0.58
1:F:98:HIS:HE1	1:F:197:ARG:NE	1.96	0.58
1:A:98:HIS:CE1	1:A:197:ARG:HE	2.21	0.58
1:A:113:ARG:HB2	5:A:254:HOH:O	2.03	0.58
1:E:122:LEU:HB3	4:E:2:SO4:O1	2.04	0.58
1:D:229:LEU:O	1:D:230:LYS:HB2	2.04	0.57
1:B:100:ILE:CG1	3:B:240:FAD:H52A	2.34	0.57
1:C:201:LYS:HE3	5:D:459:HOH:O	2.04	0.57
1:B:97:ARG:HG3	2:D:241:UMP:C2'	2.24	0.57
1:A:52:ASP:OD2	1:A:57:LYS:HB2	2.05	0.57
1:C:118:VAL:HG22	1:C:131:ARG:HH12	1.70	0.57
1:F:214:PHE:O	1:F:217:LEU:HB2	2.04	0.57
1:A:158:LEU:HD22	1:A:164:ILE:HD12	1.87	0.56
1:D:100:ILE:CG1	3:D:240:FAD:H52A	2.34	0.56
1:D:122:LEU:CD1	1:D:153:GLU:HG2	2.35	0.56
1:C:223:TYR:CZ	1:C:224:LEU:HD13	2.40	0.56
1:F:97:ARG:CG	2:F:241:UMP:H2''	2.30	0.56
1:E:98:HIS:CE1	1:E:197:ARG:HE	2.20	0.56
1:E:103:LEU:HD23	1:E:103:LEU:N	2.19	0.56
1:F:73:SER:HB3	3:F:240:FAD:O4'	2.06	0.56
1:A:162:HIS:CD2	1:C:143:LYS:HE2	2.40	0.56
1:F:122:LEU:HD11	1:F:153:GLU:HG2	1.89	0.55
1:A:122:LEU:HD23	1:A:153:GLU:HG2	1.87	0.55
1:B:38:SER:OG	1:B:58:ASP:HB3	2.07	0.55
1:D:141:ASN:O	1:D:144:VAL:HG22	2.07	0.55
1:F:141:ASN:C	1:F:141:ASN:HD22	2.10	0.55

Continued on next page...

Continued from previous page...

Atom-1	Atom-2	Interatomic distance (Å)	Clash overlap (Å)
1:C:98:HIS:HE1	1:C:197:ARG:NE	2.00	0.55
1:B:100:ILE:HG13	3:B:240:FAD:H52A	1.89	0.54
1:E:218:PRO:HA	4:E:1:SO4:O1	2.08	0.54
1:C:70:ARG:HD3	3:D:240:FAD:HM73	1.90	0.54
3:C:240:FAD:O4'	1:D:73:SER:HB3	2.08	0.54
1:E:141:ASN:HB3	1:E:144:VAL:HG22	1.90	0.54
1:E:111:THR:O	1:E:114:GLU:HG2	2.08	0.54
1:E:218:PRO:HG2	1:E:221:HIS:HB2	1.90	0.53
1:D:100:ILE:HG13	3:D:240:FAD:H52A	1.90	0.53
1:A:143:LYS:HD3	1:C:162:HIS:CE1	2.44	0.53
5:B:535:HOH:O	1:C:77:HIS:CA	2.52	0.53
1:F:113:ARG:HH21	1:F:116:LYS:NZ	2.06	0.53
1:A:153:GLU:O	1:A:157:ILE:HG13	2.08	0.53
1:A:143:LYS:HD3	1:C:162:HIS:ND1	2.23	0.53
1:C:30:HIS:HB3	1:C:81:ASN:HD22	1.74	0.53
1:E:153:GLU:O	1:E:157:ILE:HG13	2.08	0.53
1:F:27:ILE:HD13	1:F:83:GLU:HB3	1.90	0.53
1:A:97:ARG:HG3	2:C:241:UMP:C2'	2.34	0.53
1:A:100:ILE:CD1	3:A:240:FAD:H52A	2.38	0.53
1:C:145:ASN:O	1:C:149:VAL:HG23	2.08	0.53
1:D:211:LYS:HE3	1:D:215:ASP:OD2	2.09	0.53
1:F:70:ARG:NH1	1:F:71:HIS:CE1	2.77	0.52
1:A:144:VAL:HG23	1:A:145:ASN:N	2.24	0.52
1:A:70:ARG:HD3	3:B:240:FAD:HM73	1.91	0.52
1:C:141:ASN:HB3	1:C:144:VAL:HG22	1.92	0.52
1:F:116:LYS:HA	1:F:160:SER:OG	2.10	0.52
1:B:87:LEU:O	1:B:179:THR:HG22	2.09	0.52
1:E:158:LEU:HD22	1:E:164:ILE:HD12	1.91	0.52
2:B:241:UMP:C2'	1:D:97:ARG:HG3	2.32	0.52
1:A:39:GLN:HE22	1:D:29:LYS:HE3	1.73	0.52
1:C:192:ASN:HD21	1:D:69:PHE:HZ	1.57	0.52
1:D:87:LEU:O	1:D:179:THR:HG22	2.09	0.52
1:A:100:ILE:CG1	3:A:240:FAD:H52A	2.40	0.52
1:D:70:ARG:NH1	1:D:71:HIS:HE1	2.08	0.52
1:E:120:SER:O	1:E:131:ARG:NH2	2.43	0.52
1:A:113:ARG:HB3	5:A:280:HOH:O	2.10	0.52
1:A:71:HIS:HE1	5:A:269:HOH:O	1.93	0.51
1:B:56:CYS:HB3	5:B:514:HOH:O	2.10	0.51
1:B:127:THR:HG22	5:B:428:HOH:O	2.10	0.51
1:E:52:ASP:OD1	1:E:57:LYS:HB2	2.10	0.51
1:F:118:VAL:HG23	1:F:156:ARG:HD2	1.92	0.51

Continued on next page...

Continued from previous page...

Atom-1	Atom-2	Interatomic distance (Å)	Clash overlap (Å)
1:A:122:LEU:HD13	1:A:124:LEU:HD13	1.93	0.51
1:D:103:LEU:N	1:D:103:LEU:HD23	2.25	0.51
1:E:32:THR:CG2	1:E:36:ILE:HD12	2.40	0.51
1:C:196:LEU:HD21	1:D:69:PHE:CE2	2.46	0.51
1:F:141:ASN:HB3	1:F:144:VAL:HG13	1.93	0.51
1:D:125:ASN:HD22	1:D:128:ASN:H	1.54	0.51
2:B:241:UMP:H2''	1:D:97:ARG:HH11	1.74	0.51
1:B:129:LEU:O	1:B:133:LYS:HG3	2.11	0.51
1:B:143:LYS:HE2	1:D:162:HIS:CD2	2.45	0.51
1:A:69:PHE:CZ	1:B:192:ASN:ND2	2.72	0.50
1:A:70:ARG:NH2	1:B:201:LYS:HE3	2.25	0.50
1:D:24:MET:HE3	1:D:209:LEU:HA	1.92	0.50
1:B:43:THR:HG21	1:C:181:LEU:HA	1.92	0.50
1:A:122:LEU:CD1	1:A:124:LEU:HD13	2.42	0.50
1:B:108:SER:N	2:B:241:UMP:OP2	2.45	0.50
1:C:76:GLU:CD	1:D:99:ARG:HH22	2.15	0.50
1:E:102:SER:OG	1:F:76:GLU:HB3	2.12	0.49
1:E:55:GLY:O	1:E:59:LYS:HG3	2.11	0.49
1:F:113:ARG:HH21	1:F:116:LYS:HZ3	1.58	0.49
1:C:100:ILE:HD13	3:C:240:FAD:C5B	2.43	0.49
3:B:240:FAD:O3P	3:B:240:FAD:H3B	2.12	0.49
1:A:52:ASP:HB3	1:A:55:GLY:N	2.26	0.49
1:F:76:GLU:HG2	3:F:240:FAD:N1A	2.27	0.49
1:D:49:GLU:HG2	5:D:274:HOH:O	2.12	0.49
1:D:209:LEU:HD22	1:D:213:LEU:HG	1.94	0.49
1:F:26:VAL:HG11	1:F:213:LEU:HD23	1.94	0.49
1:C:147:MET:HE3	1:C:150:LEU:HD22	1.96	0.48
1:B:229:LEU:HD12	1:B:229:LEU:N	2.28	0.48
1:C:55:GLY:O	1:C:59:LYS:HD3	2.13	0.48
1:E:87:LEU:O	1:E:179:THR:HG22	2.13	0.48
1:F:141:ASN:ND2	1:F:143:LYS:H	2.11	0.48
1:B:103:LEU:N	1:B:103:LEU:HD23	2.28	0.48
1:B:154:ASN:HB3	1:D:147:MET:SD	2.54	0.48
1:C:161:GLU:HG3	1:C:162:HIS:CD2	2.48	0.48
1:A:234:HIS:HD2	5:A:536:HOH:O	1.96	0.48
1:A:99:ARG:NH2	1:B:76:GLU:OE1	2.47	0.47
1:A:120:SER:O	1:A:131:ARG:NH2	2.48	0.47
1:B:100:ILE:HG22	1:B:100:ILE:O	2.13	0.47
1:C:94:GLU:OE2	1:C:206:MET:HG3	2.15	0.47
1:C:103:LEU:HD23	1:C:103:LEU:N	2.28	0.47
1:D:50:TYR:O	1:D:57:LYS:HE3	2.13	0.47

Continued on next page...

Continued from previous page...

Atom-1	Atom-2	Interatomic distance (Å)	Clash overlap (Å)
1:E:36:ILE:HD11	1:F:30:HIS:HB3	1.94	0.47
1:F:97:ARG:HG3	2:F:241:UMP:C2'	2.37	0.47
1:F:113:ARG:HG3	5:F:243:HOH:O	2.12	0.47
1:D:35:ASP:HA	1:D:38:SER:OG	2.13	0.47
1:B:35:ASP:HA	1:B:38:SER:HB3	1.95	0.47
1:D:229:LEU:O	1:D:230:LYS:CB	2.61	0.47
1:B:26:VAL:O	1:B:27:ILE:HD13	2.15	0.47
1:A:73:SER:HB3	3:B:240:FAD:O4'	2.14	0.47
1:F:211:LYS:HG2	1:F:215:ASP:OD2	2.14	0.47
1:C:112:LEU:O	1:C:159:LEU:HD13	2.14	0.47
1:C:170:LYS:HZ2	1:C:170:LYS:HB2	1.80	0.47
1:E:123:PRO:HA	4:E:2:SO4:S	2.55	0.47
1:C:144:VAL:HG23	1:C:145:ASN:N	2.29	0.46
1:D:26:VAL:HG13	1:D:84:ILE:HD13	1.96	0.46
1:B:171:TYR:HB3	1:D:176:SER:HB3	1.96	0.46
1:B:136:LEU:HD11	1:B:152:LEU:HD22	1.97	0.46
1:B:158:LEU:HD21	1:D:147:MET:HG3	1.98	0.46
1:D:38:SER:CA	1:D:62:ILE:HD11	2.46	0.46
1:E:209:LEU:HD22	1:E:213:LEU:HG	1.97	0.46
1:F:52:ASP:OD2	1:F:55:GLY:HA3	2.14	0.46
1:F:122:LEU:CD1	1:F:153:GLU:HG2	2.45	0.46
1:B:113:ARG:O	1:B:116:LYS:HB2	2.15	0.46
1:E:229:LEU:O	1:E:230:LYS:HB2	2.16	0.46
1:A:103:LEU:N	1:A:103:LEU:CD2	2.77	0.46
1:B:89:ARG:NH2	1:D:93:GLN:HG2	2.31	0.46
1:C:98:HIS:CE1	1:C:197:ARG:HH21	2.34	0.46
1:E:125:ASN:ND2	1:E:128:ASN:ND2	2.64	0.46
1:F:197:ARG:NH1	2:F:241:UMP:HN3	1.95	0.46
1:F:198:SER:HB2	1:F:230:LYS:H	1.81	0.46
1:F:87:LEU:O	1:F:179:THR:HG22	2.16	0.46
1:C:87:LEU:O	1:C:179:THR:HG22	2.15	0.46
1:D:136:LEU:O	1:D:178:LYS:HE3	2.16	0.46
2:A:241:UMP:H2''	1:C:97:ARG:HH11	1.81	0.45
1:B:143:LYS:O	1:B:147:MET:HG2	2.16	0.45
1:F:218:PRO:HG2	1:F:221:HIS:HB2	1.97	0.45
1:E:85:LYS:HG2	1:E:180:HIS:CD2	2.52	0.45
1:C:115:LEU:O	1:C:118:VAL:HG12	2.16	0.45
1:A:100:ILE:O	1:A:100:ILE:HG22	2.17	0.45
1:B:79:TYR:CD1	1:C:79:TYR:HB2	2.52	0.45
1:C:199:SER:OG	1:C:201:LYS:HB2	2.16	0.45
1:E:25:GLU:CG	1:E:85:LYS:HB2	2.46	0.45

Continued on next page...

Continued from previous page...

Atom-1	Atom-2	Interatomic distance (Å)	Clash overlap (Å)
1:E:139:VAL:CG2	1:E:144:VAL:HG21	2.47	0.45
1:F:42:ARG:HG2	1:F:42:ARG:HH11	1.82	0.45
1:B:113:ARG:HD3	5:B:319:HOH:O	2.17	0.44
1:A:113:ARG:O	1:A:113:ARG:HG2	2.17	0.44
1:B:31:TYR:HA	1:B:79:TYR:O	2.18	0.44
5:C:288:HOH:O	1:D:71:HIS:HD2	2.00	0.44
1:E:223:TYR:CE1	1:E:224:LEU:HD13	2.52	0.44
1:C:37:ALA:O	1:C:41:ILE:HG13	2.18	0.44
1:D:141:ASN:OD1	1:D:144:VAL:HG13	2.17	0.44
1:A:94:GLU:OE2	1:A:206:MET:HG3	2.16	0.44
1:A:117:GLU:OE1	1:A:117:GLU:N	2.50	0.44
1:A:145:ASN:O	1:A:149:VAL:HG23	2.18	0.44
1:B:130:GLU:HG3	5:B:431:HOH:O	2.17	0.44
1:D:98:HIS:HE1	1:D:197:ARG:NE	2.08	0.44
1:B:97:ARG:HH11	2:D:241:UMP:H2'	1.82	0.44
1:E:44:CYS:HB2	1:E:45:TRP:CE3	2.52	0.44
1:F:165:LYS:HE2	5:F:504:HOH:O	2.17	0.44
5:B:379:HOH:O	1:C:106:LYS:HE3	2.17	0.43
3:C:240:FAD:H2'	3:C:240:FAD:H9	2.00	0.43
1:E:36:ILE:HA	1:E:39:GLN:HE21	1.83	0.43
1:F:143:LYS:O	1:F:147:MET:HG2	2.18	0.43
1:C:89:ARG:HD2	1:C:173:MET:CE	2.49	0.43
1:C:62:ILE:HG21	1:C:224:LEU:HD21	2.00	0.43
1:E:79:TYR:CD2	1:F:79:TYR:HB2	2.53	0.43
1:C:60:GLU:HG3	1:C:64:ARG:HH12	1.83	0.43
1:E:73:SER:HB3	3:E:240:FAD:O4'	2.17	0.43
1:B:98:HIS:HE1	1:B:197:ARG:NE	2.02	0.43
1:C:139:VAL:CG2	1:C:144:VAL:HG21	2.48	0.43
1:A:199:SER:OG	1:A:237:HIS:CD2	2.71	0.43
1:E:141:ASN:O	1:E:144:VAL:HG22	2.19	0.43
1:A:43:THR:HG21	1:D:181:LEU:HA	2.01	0.43
1:A:64:ARG:O	1:A:68:ILE:HG13	2.19	0.43
1:D:68:ILE:HG22	1:D:70:ARG:HG2	2.00	0.43
1:E:36:ILE:HD11	1:F:30:HIS:CB	2.49	0.43
1:A:42:ARG:CZ	1:A:61:LEU:HD22	2.49	0.42
1:B:99:ARG:HB3	1:D:99:ARG:CB	2.45	0.42
1:D:120:SER:O	1:D:131:ARG:NH2	2.52	0.42
1:D:230:LYS:HD3	1:D:230:LYS:HA	1.88	0.42
1:E:200:ASN:ND2	5:E:493:HOH:O	2.52	0.42
1:F:141:ASN:HD22	1:F:143:LYS:N	2.17	0.42
1:A:34:LEU:HD22	1:A:62:ILE:HD12	2.01	0.42

Continued on next page...

Continued from previous page...

Atom-1	Atom-2	Interatomic distance (Å)	Clash overlap (Å)
1:A:223:TYR:CZ	1:A:224:LEU:HD13	2.54	0.42
1:C:157:ILE:HG23	1:C:161:GLU:CD	2.39	0.42
1:F:103:LEU:N	1:F:103:LEU:HD23	2.34	0.42
1:C:99:ARG:HH12	3:C:240:FAD:C5'	2.32	0.42
1:C:141:ASN:HB3	1:C:144:VAL:CG2	2.49	0.42
1:B:49:GLU:OE1	1:B:50:TYR:HE1	2.02	0.42
1:B:112:LEU:HD23	1:B:112:LEU:HA	1.80	0.42
1:E:32:THR:O	1:E:221:HIS:HE1	2.02	0.42
1:E:39:GLN:OE1	1:F:29:LYS:HE3	2.19	0.42
1:A:37:ALA:HB3	1:A:62:ILE:HD13	2.02	0.42
1:A:99:ARG:HB2	1:C:99:ARG:HB3	2.02	0.42
1:C:34:LEU:CD1	1:C:59:LYS:HE3	2.47	0.42
1:B:59:LYS:HE3	1:B:59:LYS:HB2	1.81	0.42
1:D:37:ALA:CB	1:D:62:ILE:HD12	2.49	0.42
1:B:93:GLN:HG3	2:D:241:UMP:H3'	2.01	0.42
1:E:41:ILE:HD13	1:E:65:VAL:HB	2.02	0.42
1:A:70:ARG:HH11	1:A:71:HIS:CE1	2.37	0.42
1:C:147:MET:HA	1:C:147:MET:CE	2.50	0.42
1:A:100:ILE:HG13	3:A:240:FAD:H52A	2.02	0.41
1:C:194:LEU:CD1	1:C:225:PHE:HB3	2.50	0.41
1:D:26:VAL:HG11	1:D:213:LEU:HD23	2.02	0.41
1:E:75:LEU:O	1:E:187:ALA:HB3	2.20	0.41
1:B:94:GLU:OE2	1:B:206:MET:HG3	2.20	0.41
1:D:198:SER:HB3	1:D:229:LEU:HD12	2.01	0.41
1:A:52:ASP:O	1:A:53:ASP:HB2	2.21	0.41
1:A:117:GLU:CD	1:A:117:GLU:H	2.23	0.41
1:B:218:PRO:HG2	1:B:221:HIS:CD2	2.54	0.41
1:C:170:LYS:HB2	1:C:170:LYS:NZ	2.35	0.41
1:D:118:VAL:HG13	1:D:131:ARG:HH12	1.86	0.41
1:F:111:THR:O	1:F:114:GLU:HG2	2.19	0.41
1:B:136:LEU:CD1	1:B:152:LEU:HD22	2.51	0.41
1:E:97:ARG:HH11	2:E:241:UMP:H2''	1.85	0.41
1:F:97:ARG:HH11	2:F:241:UMP:H2''	1.85	0.41
1:A:52:ASP:HB3	1:A:55:GLY:CA	2.51	0.41
1:A:144:VAL:CG2	1:A:145:ASN:N	2.83	0.41
1:A:193:PHE:CZ	1:A:209:LEU:HD13	2.56	0.41
1:C:73:SER:CB	3:D:240:FAD:O4'	2.67	0.41
1:E:34:LEU:HG	1:E:221:HIS:NE2	2.35	0.41
1:F:93:GLN:HE21	1:F:93:GLN:HB2	1.59	0.41
1:F:193:PHE:CZ	1:F:209:LEU:HD12	2.55	0.41
1:F:83:GLU:OE2	1:F:85:LYS:HE3	2.20	0.41

Continued on next page...

Continued from previous page...

Atom-1	Atom-2	Interatomic distance (Å)	Clash overlap (Å)
1:A:75:LEU:O	1:A:187:ALA:HB3	2.21	0.41
1:A:122:LEU:HA	1:A:123:PRO:C	2.41	0.41
1:B:125:ASN:OD1	1:B:127:THR:HG23	2.21	0.41
1:B:141:ASN:HB3	1:B:144:VAL:HG13	2.03	0.41
1:C:197:ARG:O	1:C:207:GLN:HA	2.20	0.41
1:D:80:TYR:O	1:D:184:SER:HA	2.21	0.41
1:A:234:HIS:CD2	5:A:536:HOH:O	2.73	0.41
1:D:81:ASN:ND2	5:D:271:HOH:O	2.54	0.41
1:E:113:ARG:HG2	1:E:166:ASN:HD21	1.86	0.41
1:E:158:LEU:HD22	1:E:164:ILE:CD1	2.51	0.41
1:F:118:VAL:HG23	1:F:156:ARG:CD	2.51	0.41
1:F:141:ASN:ND2	1:F:143:LYS:HB2	2.24	0.41
1:C:98:HIS:HA	3:C:240:FAD:O1A	2.21	0.40
1:D:63:HIS:HB2	1:D:223:TYR:CE1	2.56	0.40
1:D:125:ASN:O	1:D:126:GLU:C	2.59	0.40
1:E:37:ALA:HB3	1:E:62:ILE:HD13	2.02	0.40
1:A:29:LYS:N	1:A:81:ASN:O	2.51	0.40
1:A:97:ARG:HD2	1:A:97:ARG:HA	1.89	0.40
1:A:108:SER:N	2:A:241:UMP:OP2	2.53	0.40
1:A:171:TYR:O	1:C:176:SER:HB3	2.21	0.40
1:B:52:ASP:OD1	1:B:55:GLY:N	2.54	0.40
1:F:120:SER:O	1:F:131:ARG:NH2	2.55	0.40
1:F:141:ASN:ND2	1:F:143:LYS:N	2.68	0.40
1:A:193:PHE:HZ	1:A:209:LEU:HD13	1.86	0.40
1:C:196:LEU:HD21	1:D:69:PHE:CD2	2.56	0.40
1:A:98:HIS:HA	3:A:240:FAD:O1A	2.21	0.40
1:A:103:LEU:HD23	1:A:103:LEU:H	1.87	0.40
1:A:223:TYR:CE1	1:A:224:LEU:HD13	2.57	0.40
1:F:136:LEU:O	1:F:178:LYS:HE3	2.21	0.40

All (1) symmetry-related close contacts are listed below. The label for Atom-2 includes the symmetry operator and encoded unit-cell translations to be applied.

Atom-1	Atom-2	Interatomic distance (Å)	Clash overlap (Å)
5:E:257:HOH:O	5:F:503:HOH:O[2_555]	2.15	0.05

5.3 Torsion angles [i](#)

5.3.1 Protein backbone [i](#)

In the following table, the Percentiles column shows the percent Ramachandran outliers of the chain as a percentile score with respect to all X-ray entries followed by that with respect to entries of similar resolution.

The Analysed column shows the number of residues for which the backbone conformation was analysed, and the total number of residues.

Mol	Chain	Analysed	Favoured	Allowed	Outliers	Percentiles	
1	A	213/216 (99%)	203 (95%)	10 (5%)	0	100	100
1	B	205/216 (95%)	191 (93%)	13 (6%)	1 (0%)	25	44
1	C	205/216 (95%)	197 (96%)	8 (4%)	0	100	100
1	D	205/216 (95%)	196 (96%)	9 (4%)	0	100	100
1	E	205/216 (95%)	196 (96%)	9 (4%)	0	100	100
1	F	205/216 (95%)	193 (94%)	10 (5%)	2 (1%)	13	25
All	All	1238/1296 (96%)	1176 (95%)	59 (5%)	3 (0%)	44	64

All (3) Ramachandran outliers are listed below:

Mol	Chain	Res	Type
1	B	120	SER
1	F	53	ASP
1	F	141	ASN

5.3.2 Protein sidechains [i](#)

In the following table, the Percentiles column shows the percent sidechain outliers of the chain as a percentile score with respect to all X-ray entries followed by that with respect to entries of similar resolution.

The Analysed column shows the number of residues for which the sidechain conformation was analysed, and the total number of residues.

Mol	Chain	Analysed	Rotameric	Outliers	Percentiles	
1	A	194/195 (100%)	182 (94%)	12 (6%)	15	31
1	B	186/195 (95%)	179 (96%)	7 (4%)	28	53
1	C	186/195 (95%)	178 (96%)	8 (4%)	25	48
1	D	186/195 (95%)	178 (96%)	8 (4%)	25	48

Continued on next page...

Continued from previous page...

Mol	Chain	Analysed	Rotameric	Outliers	Percentiles	
1	E	186/195 (95%)	178 (96%)	8 (4%)	25	48
1	F	186/195 (95%)	176 (95%)	10 (5%)	18	37
All	All	1124/1170 (96%)	1071 (95%)	53 (5%)	22	44

All (53) residues with a non-rotameric sidechain are listed below:

Mol	Chain	Res	Type
1	A	52	ASP
1	A	70	ARG
1	A	99	ARG
1	A	103	LEU
1	A	117	GLU
1	A	124	LEU
1	A	170	LYS
1	A	209	LEU
1	A	217	LEU
1	A	224	LEU
1	A	229	LEU
1	A	234	HIS
1	B	67	ASN
1	B	103	LEU
1	B	119	GLU
1	B	170	LYS
1	B	209	LEU
1	B	217	LEU
1	B	223	TYR
1	C	70	ARG
1	C	78	LEU
1	C	103	LEU
1	C	147	MET
1	C	150	LEU
1	C	170	LYS
1	C	213	LEU
1	C	224	LEU
1	D	60	GLU
1	D	99	ARG
1	D	103	LEU
1	D	125	ASN
1	D	163	ASN
1	D	200	ASN
1	D	209	LEU

Continued on next page...

Continued from previous page...

Mol	Chain	Res	Type
1	D	224	LEU
1	E	99	ARG
1	E	103	LEU
1	E	150	LEU
1	E	204	LYS
1	E	209	LEU
1	E	224	LEU
1	E	227	ASP
1	E	230	LYS
1	F	27	ILE
1	F	93	GLN
1	F	141	ASN
1	F	142	GLU
1	F	150	LEU
1	F	170	LYS
1	F	181	LEU
1	F	217	LEU
1	F	224	LEU
1	F	228	CYS

Sometimes sidechains can be flipped to improve hydrogen bonding and reduce clashes. All (37) such sidechains are listed below:

Mol	Chain	Res	Type
1	A	39	GLN
1	A	71	HIS
1	A	81	ASN
1	A	98	HIS
1	A	162	HIS
1	A	163	ASN
1	A	166	ASN
1	A	237	HIS
1	A	238	HIS
1	B	67	ASN
1	B	81	ASN
1	B	98	HIS
1	B	128	ASN
1	B	154	ASN
1	B	162	HIS
1	B	163	ASN
1	C	39	GLN
1	C	71	HIS
1	C	81	ASN

Continued on next page...

Continued from previous page...

Mol	Chain	Res	Type
1	C	98	HIS
1	C	207	GLN
1	D	71	HIS
1	D	81	ASN
1	D	98	HIS
1	D	125	ASN
1	D	162	HIS
1	D	180	HIS
1	D	200	ASN
1	E	98	HIS
1	E	125	ASN
1	E	180	HIS
1	E	222	GLN
1	F	71	HIS
1	F	81	ASN
1	F	93	GLN
1	F	98	HIS
1	F	141	ASN

5.3.3 RNA [i](#)

There are no RNA molecules in this entry.

5.4 Non-standard residues in protein, DNA, RNA chains [i](#)

There are no non-standard protein/DNA/RNA residues in this entry.

5.5 Carbohydrates [i](#)

There are no oligosaccharides in this entry.

5.6 Ligand geometry [i](#)

23 ligands are modelled in this entry.

In the following table, the Counts columns list the number of bonds (or angles) for which Mogul statistics could be retrieved, the number of bonds (or angles) that are observed in the model and the number of bonds (or angles) that are defined in the Chemical Component Dictionary. The Link column lists molecule types, if any, to which the group is linked. The Z score for a bond length (or angle) is the number of standard deviations the observed value is removed from the

expected value. A bond length (or angle) with $|Z| > 2$ is considered an outlier worth inspection. RMSZ is the root-mean-square of all Z scores of the bond lengths (or angles).

Mol	Type	Chain	Res	Link	Bond lengths			Bond angles		
					Counts	RMSZ	# Z > 2	Counts	RMSZ	# Z > 2
2	UMP	F	241	-	21,21,21	1.79	1 (4%)	30,31,31	1.84	7 (23%)
2	UMP	E	241	-	21,21,21	1.85	1 (4%)	30,31,31	1.86	9 (30%)
2	UMP	C	241	-	21,21,21	1.84	1 (4%)	30,31,31	1.88	8 (26%)
4	SO4	A	5	-	4,4,4	0.38	0	6,6,6	0.07	0
4	SO4	F	7	-	4,4,4	0.39	0	6,6,6	0.09	0
4	SO4	D	6	-	4,4,4	0.36	0	6,6,6	0.07	0
3	FAD	A	240	-	54,58,58	1.72	12 (22%)	71,89,89	1.22	7 (9%)
4	SO4	E	2	-	4,4,4	0.32	0	6,6,6	0.25	0
3	FAD	C	240	-	54,58,58	1.69	11 (20%)	71,89,89	1.30	7 (9%)
2	UMP	B	241	-	21,21,21	1.86	1 (4%)	30,31,31	1.89	9 (30%)
3	FAD	E	240	-	54,58,58	1.68	12 (22%)	71,89,89	1.27	4 (5%)
4	SO4	C	8	-	4,4,4	0.37	0	6,6,6	0.06	0
4	SO4	C	4	-	4,4,4	0.37	0	6,6,6	0.09	0
2	UMP	D	241	-	21,21,21	1.83	1 (4%)	30,31,31	1.85	8 (26%)
4	SO4	A	11	-	4,4,4	0.43	0	6,6,6	0.06	0
4	SO4	D	3	-	4,4,4	0.36	0	6,6,6	0.19	0
3	FAD	D	240	-	54,58,58	1.72	11 (20%)	71,89,89	1.30	6 (8%)
3	FAD	F	240	-	54,58,58	1.67	10 (18%)	71,89,89	1.24	6 (8%)
4	SO4	A	10	-	4,4,4	0.42	0	6,6,6	0.12	0
2	UMP	A	241	-	21,21,21	1.80	1 (4%)	30,31,31	1.88	9 (30%)
4	SO4	C	9	-	4,4,4	0.40	0	6,6,6	0.09	0
3	FAD	B	240	-	54,58,58	1.72	11 (20%)	71,89,89	1.28	6 (8%)
4	SO4	E	1	-	4,4,4	0.35	0	6,6,6	0.06	0

In the following table, the Chirals column lists the number of chiral outliers, the number of chiral centers analysed, the number of these observed in the model and the number defined in the Chemical Component Dictionary. Similar counts are reported in the Torsion and Rings columns. '-' means no outliers of that kind were identified.

Mol	Type	Chain	Res	Link	Chirals	Torsions	Rings
3	FAD	E	240	-	-	4/30/50/50	0/6/6/6
3	FAD	C	240	-	-	6/30/50/50	0/6/6/6
3	FAD	D	240	-	-	4/30/50/50	0/6/6/6
2	UMP	F	241	-	-	2/10/22/22	0/2/2/2
2	UMP	E	241	-	-	2/10/22/22	0/2/2/2
2	UMP	D	241	-	-	2/10/22/22	0/2/2/2

Continued on next page...

Continued from previous page...

Mol	Type	Chain	Res	Link	Chirals	Torsions	Rings
2	UMP	C	241	-	-	2/10/22/22	0/2/2/2
3	FAD	A	240	-	-	6/30/50/50	0/6/6/6
3	FAD	F	240	-	-	5/30/50/50	0/6/6/6
2	UMP	A	241	-	-	2/10/22/22	0/2/2/2
3	FAD	B	240	-	-	4/30/50/50	0/6/6/6
2	UMP	B	241	-	-	2/10/22/22	0/2/2/2

All (73) bond length outliers are listed below:

Mol	Chain	Res	Type	Atoms	Z	Observed(Å)	Ideal(Å)
2	E	241	UMP	C6-C5	7.26	1.51	1.35
2	C	241	UMP	C6-C5	7.13	1.51	1.35
2	D	241	UMP	C6-C5	7.10	1.51	1.35
2	B	241	UMP	C6-C5	7.03	1.51	1.35
2	F	241	UMP	C6-C5	6.96	1.51	1.35
2	A	241	UMP	C6-C5	6.87	1.51	1.35
3	B	240	FAD	C4X-N5	5.92	1.43	1.30
3	C	240	FAD	C4X-N5	5.55	1.42	1.30
3	F	240	FAD	C4X-N5	5.48	1.42	1.30
3	E	240	FAD	C4X-N5	5.28	1.42	1.30
3	D	240	FAD	C4X-N5	5.24	1.42	1.30
3	A	240	FAD	C4X-N5	5.18	1.41	1.30
3	D	240	FAD	C9-C8	4.65	1.45	1.39
3	A	240	FAD	C9-C8	4.44	1.45	1.39
3	E	240	FAD	C9-C8	4.28	1.45	1.39
3	F	240	FAD	C9-C8	4.11	1.45	1.39
3	A	240	FAD	C4A-N3A	4.09	1.41	1.35
3	C	240	FAD	C9A-N10	4.00	1.48	1.41
3	D	240	FAD	C9A-N10	3.97	1.48	1.41
3	C	240	FAD	C9-C8	3.90	1.44	1.39
3	F	240	FAD	C9A-N10	3.80	1.47	1.41
3	B	240	FAD	C9-C8	3.74	1.44	1.39
3	A	240	FAD	C9A-N10	3.71	1.47	1.41
3	C	240	FAD	C4A-N3A	3.62	1.40	1.35
3	B	240	FAD	C9A-N10	3.58	1.47	1.41
3	F	240	FAD	C4A-N3A	3.58	1.40	1.35
3	B	240	FAD	C4A-N3A	3.57	1.40	1.35
3	A	240	FAD	C9A-C5X	3.42	1.46	1.41
3	C	240	FAD	C9A-C5X	3.36	1.46	1.41
3	E	240	FAD	C6-C5X	3.35	1.45	1.40
3	D	240	FAD	C9A-C5X	3.34	1.46	1.41

Continued on next page...

Continued from previous page...

Mol	Chain	Res	Type	Atoms	Z	Observed(Å)	Ideal(Å)
3	E	240	FAD	C9A-N10	3.34	1.46	1.41
3	F	240	FAD	C6-C5X	3.32	1.45	1.40
3	D	240	FAD	C4A-N3A	3.32	1.40	1.35
3	B	240	FAD	C6-C5X	3.30	1.45	1.40
3	B	240	FAD	C9A-C5X	3.25	1.46	1.41
3	E	240	FAD	C4A-N3A	3.21	1.40	1.35
3	F	240	FAD	C9A-C5X	3.16	1.46	1.41
3	C	240	FAD	C6-C5X	2.94	1.44	1.40
3	E	240	FAD	C9A-C5X	2.93	1.45	1.41
3	D	240	FAD	PA-O5B	-2.88	1.48	1.59
3	D	240	FAD	C6-C5X	2.84	1.44	1.40
3	E	240	FAD	PA-O5B	-2.74	1.48	1.59
3	C	240	FAD	PA-O5B	-2.71	1.48	1.59
3	A	240	FAD	C8A-N7A	-2.68	1.29	1.34
3	A	240	FAD	C10-N1	2.65	1.38	1.33
3	F	240	FAD	PA-O5B	-2.63	1.49	1.59
3	B	240	FAD	C10-N1	2.63	1.38	1.33
3	E	240	FAD	PA-O3P	-2.62	1.56	1.59
3	A	240	FAD	C6-C5X	2.61	1.43	1.40
3	D	240	FAD	C1'-C2'	-2.59	1.49	1.52
3	B	240	FAD	PA-O5B	-2.58	1.49	1.59
3	A	240	FAD	PA-O5B	-2.54	1.49	1.59
3	C	240	FAD	C1'-C2'	-2.49	1.49	1.52
3	A	240	FAD	C2A-N3A	2.46	1.35	1.32
3	D	240	FAD	PA-O3P	-2.42	1.56	1.59
3	A	240	FAD	O4B-C1B	2.37	1.44	1.40
3	B	240	FAD	C8A-N7A	-2.36	1.30	1.34
3	C	240	FAD	C10-N1	2.35	1.38	1.33
3	B	240	FAD	C4'-C3'	-2.34	1.49	1.53
3	F	240	FAD	C10-N1	2.34	1.37	1.33
3	E	240	FAD	C10-N1	2.32	1.37	1.33
3	D	240	FAD	C8A-N7A	-2.29	1.30	1.34
3	E	240	FAD	C8A-N7A	-2.24	1.30	1.34
3	C	240	FAD	C8A-N7A	-2.21	1.30	1.34
3	E	240	FAD	C2A-N3A	2.17	1.35	1.32
3	E	240	FAD	C4'-C3'	-2.14	1.49	1.53
3	F	240	FAD	C2A-N3A	2.14	1.35	1.32
3	A	240	FAD	C2A-N1A	2.13	1.37	1.33
3	F	240	FAD	C8A-N7A	-2.10	1.30	1.34
3	B	240	FAD	O4B-C1B	2.07	1.43	1.40
3	D	240	FAD	C10-N1	2.03	1.37	1.33
3	C	240	FAD	C2A-N3A	2.02	1.35	1.32

All (86) bond angle outliers are listed below:

Mol	Chain	Res	Type	Atoms	Z	Observed(°)	Ideal(°)
2	B	241	UMP	N3-C2-N1	5.03	121.43	114.89
2	E	241	UMP	N3-C2-N1	4.83	121.17	114.89
2	D	241	UMP	N3-C2-N1	4.81	121.16	114.89
2	C	241	UMP	N3-C2-N1	4.81	121.15	114.89
2	A	241	UMP	N3-C2-N1	4.60	120.88	114.89
3	E	240	FAD	O5'-C5'-C4'	-4.59	97.12	109.36
2	F	241	UMP	N3-C2-N1	4.58	120.85	114.89
3	B	240	FAD	O5'-C5'-C4'	-4.43	97.53	109.36
3	D	240	FAD	O5'-C5'-C4'	-4.33	97.79	109.36
3	F	240	FAD	O5'-C5'-C4'	-4.09	98.44	109.36
3	A	240	FAD	O5'-C5'-C4'	-4.08	98.48	109.36
3	C	240	FAD	O5'-C5'-C4'	-3.91	98.92	109.36
2	A	241	UMP	C5-C4-N3	3.84	120.18	114.80
2	F	241	UMP	C5-C4-N3	3.70	119.99	114.80
3	E	240	FAD	C4'-C3'-C2'	-3.68	107.45	113.57
2	B	241	UMP	C5-C4-N3	3.64	119.90	114.80
2	D	241	UMP	C5-C4-N3	3.64	119.90	114.80
2	C	241	UMP	C5-C4-N3	3.59	119.82	114.80
2	E	241	UMP	C5-C4-N3	3.58	119.82	114.80
3	C	240	FAD	O4B-C4B-C5B	-3.42	98.38	109.33
3	B	240	FAD	C4'-C3'-C2'	-3.41	107.89	113.57
2	F	241	UMP	O4-C4-C5	-3.40	119.30	125.16
3	D	240	FAD	C4'-C3'-C2'	-3.36	107.98	113.57
3	C	240	FAD	C4'-C3'-C2'	-3.33	108.03	113.57
2	A	241	UMP	O4-C4-C5	-3.32	119.43	125.16
3	F	240	FAD	C4'-C3'-C2'	-3.27	108.12	113.57
2	C	241	UMP	O4-C4-C5	-3.23	119.58	125.16
3	C	240	FAD	C4X-C10-N10	3.20	121.06	116.48
3	D	240	FAD	O4B-C4B-C5B	-3.19	99.13	109.33
3	E	240	FAD	O4B-C4B-C5B	-3.11	99.36	109.33
2	E	241	UMP	O4-C4-C5	-3.10	119.81	125.16
2	D	241	UMP	O4-C4-C5	-3.07	119.86	125.16
3	D	240	FAD	C4X-C10-N10	3.06	120.87	116.48
3	F	240	FAD	O4B-C4B-C5B	-3.04	99.60	109.33
3	A	240	FAD	O4B-C4B-C5B	-3.03	99.64	109.33
3	E	240	FAD	C4X-C10-N10	2.97	120.73	116.48
3	F	240	FAD	C4X-C10-N10	2.97	120.73	116.48
3	B	240	FAD	O4B-C4B-C5B	-2.97	99.83	109.33
2	D	241	UMP	O4'-C1'-N1	2.92	113.04	107.86
2	B	241	UMP	O4'-C1'-N1	2.92	113.04	107.86
2	B	241	UMP	O4-C4-C5	-2.91	120.14	125.16
3	B	240	FAD	C4B-O4B-C1B	2.90	112.58	109.92

Continued on next page...

Continued from previous page...

Mol	Chain	Res	Type	Atoms	Z	Observed(°)	Ideal(°)
3	A	240	FAD	C4X-C10-N10	2.83	120.53	116.48
3	C	240	FAD	C1'-N10-C9A	2.82	126.11	120.63
2	A	241	UMP	O4'-C1'-N1	2.82	112.87	107.86
2	E	241	UMP	C4-N3-C2	-2.82	123.11	126.61
2	C	241	UMP	C4-N3-C2	-2.81	123.12	126.61
3	A	240	FAD	C4'-C3'-C2'	-2.81	108.90	113.57
2	F	241	UMP	C4-N3-C2	-2.80	123.13	126.61
2	C	241	UMP	O4'-C1'-N1	2.73	112.71	107.86
2	A	241	UMP	C6-C5-C4	-2.71	116.07	119.53
2	A	241	UMP	C4-N3-C2	-2.71	123.25	126.61
2	E	241	UMP	O4'-C1'-N1	2.70	112.65	107.86
3	B	240	FAD	C4X-C10-N10	2.65	120.28	116.48
2	F	241	UMP	O4'-C1'-N1	2.61	112.49	107.86
2	D	241	UMP	C6-C5-C4	-2.61	116.20	119.53
2	B	241	UMP	C4-N3-C2	-2.57	123.42	126.61
2	B	241	UMP	C6-C5-C4	-2.56	116.26	119.53
2	D	241	UMP	C4-N3-C2	-2.56	123.44	126.61
2	E	241	UMP	C2'-C1'-N1	2.55	120.19	113.81
2	C	241	UMP	C6-C5-C4	-2.55	116.28	119.53
2	E	241	UMP	C6-C5-C4	-2.47	116.38	119.53
2	B	241	UMP	C2'-C1'-N1	2.44	119.91	113.81
2	C	241	UMP	C2'-C1'-N1	2.37	119.73	113.81
2	F	241	UMP	C1'-N1-C2	2.36	122.28	117.66
3	D	240	FAD	C1'-N10-C9A	2.36	125.23	120.63
2	B	241	UMP	C1'-N1-C2	2.31	122.17	117.66
2	F	241	UMP	C6-C5-C4	-2.30	116.60	119.53
3	D	240	FAD	C9-C9A-N10	2.28	124.92	121.85
2	A	241	UMP	C1'-N1-C2	2.27	122.11	117.66
3	C	240	FAD	C4B-O4B-C1B	2.27	112.00	109.92
2	B	241	UMP	O2-C2-N3	-2.27	117.31	121.49
2	A	241	UMP	C2'-C1'-N1	2.26	119.47	113.81
3	C	240	FAD	C9-C9A-N10	2.22	124.83	121.85
2	D	241	UMP	C1'-N1-C2	2.21	121.99	117.66
2	C	241	UMP	C1'-N1-C2	2.20	121.97	117.66
2	E	241	UMP	C1'-N1-C2	2.19	121.94	117.66
2	D	241	UMP	C2'-C1'-N1	2.15	119.19	113.81
3	F	240	FAD	C4B-O4B-C1B	2.13	111.88	109.92
3	A	240	FAD	C1'-N10-C9A	2.07	124.65	120.63
3	A	240	FAD	C4B-O4B-C1B	2.05	111.80	109.92
3	A	240	FAD	C9-C9A-N10	2.05	124.61	121.85
3	F	240	FAD	C1'-N10-C9A	2.03	124.58	120.63
2	A	241	UMP	O5'-P-OP1	2.02	111.90	106.44

Continued on next page...

Continued from previous page...

Mol	Chain	Res	Type	Atoms	Z	Observed(°)	Ideal(°)
3	B	240	FAD	O4B-C1B-N9A	-2.01	106.07	108.75
2	E	241	UMP	O5'-P-OP1	2.01	111.87	106.44

There are no chirality outliers.

All (41) torsion outliers are listed below:

Mol	Chain	Res	Type	Atoms
3	C	240	FAD	C2'-C1'-N10-C10
3	D	240	FAD	C2'-C1'-N10-C10
2	A	241	UMP	C2'-C1'-N1-C2
2	B	241	UMP	C2'-C1'-N1-C2
2	D	241	UMP	C2'-C1'-N1-C2
2	E	241	UMP	C2'-C1'-N1-C2
2	F	241	UMP	C2'-C1'-N1-C2
2	C	241	UMP	C2'-C1'-N1-C2
2	A	241	UMP	C2'-C1'-N1-C6
2	B	241	UMP	C2'-C1'-N1-C6
2	D	241	UMP	C2'-C1'-N1-C6
2	E	241	UMP	C2'-C1'-N1-C6
2	F	241	UMP	C2'-C1'-N1-C6
3	A	240	FAD	P-O3P-PA-O1A
3	B	240	FAD	P-O3P-PA-O1A
3	C	240	FAD	P-O3P-PA-O1A
3	D	240	FAD	P-O3P-PA-O1A
3	E	240	FAD	P-O3P-PA-O1A
3	F	240	FAD	P-O3P-PA-O1A
2	C	241	UMP	C2'-C1'-N1-C6
3	C	240	FAD	C4'-C5'-O5'-P
3	B	240	FAD	PA-O3P-P-O2P
3	F	240	FAD	PA-O3P-P-O2P
3	D	240	FAD	C4'-C5'-O5'-P
3	F	240	FAD	C4'-C5'-O5'-P
3	A	240	FAD	PA-O3P-P-O2P
3	A	240	FAD	C4'-C5'-O5'-P
3	B	240	FAD	C4B-C5B-O5B-PA
3	E	240	FAD	C4'-C5'-O5'-P
3	A	240	FAD	PA-O3P-P-O1P
3	B	240	FAD	PA-O3P-P-O1P
3	C	240	FAD	PA-O3P-P-O1P
3	D	240	FAD	PA-O3P-P-O1P
3	E	240	FAD	PA-O3P-P-O1P
3	F	240	FAD	O4B-C4B-C5B-O5B

Continued on next page...

Continued from previous page...

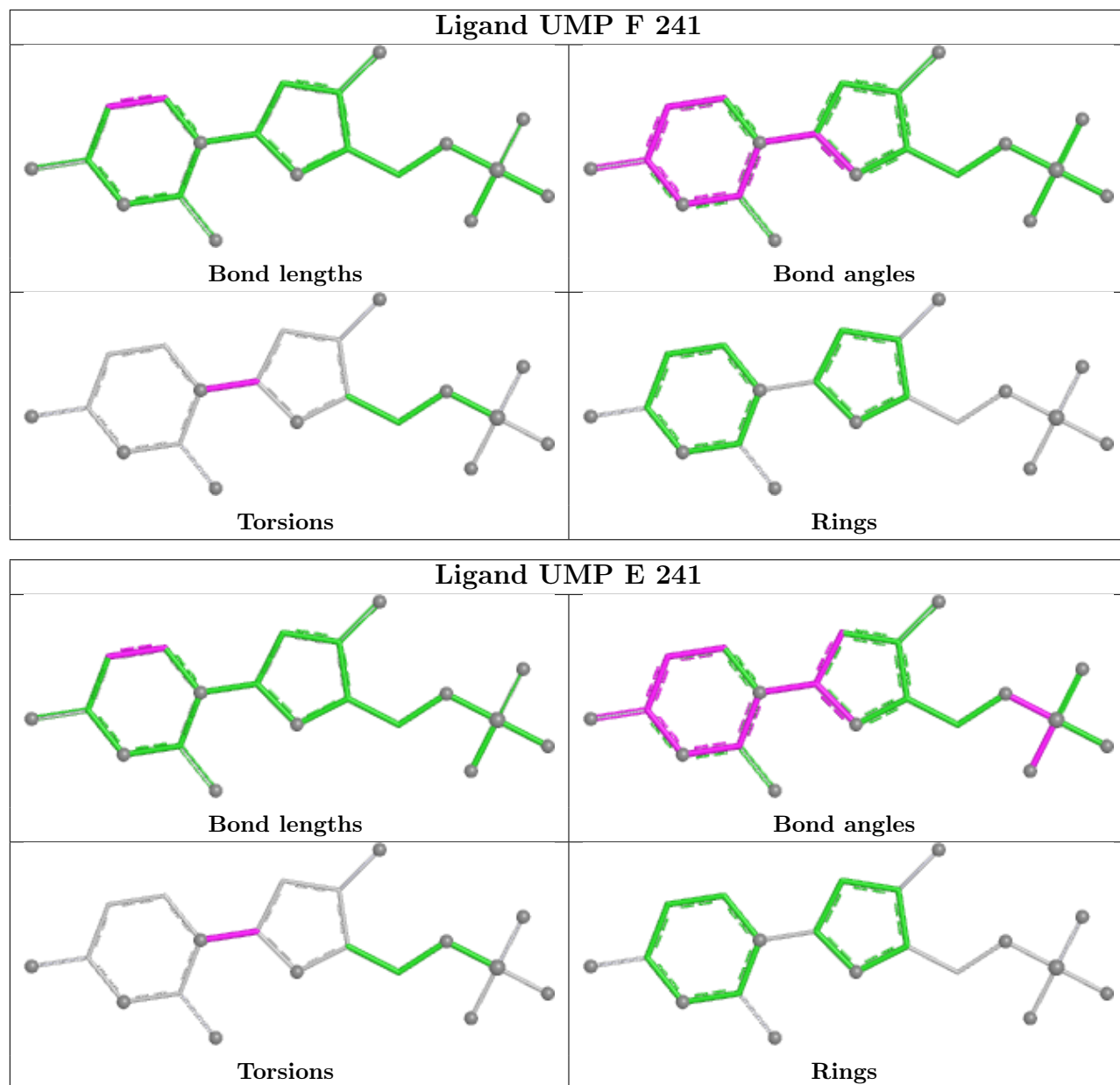
Mol	Chain	Res	Type	Atoms
3	A	240	FAD	C4B-C5B-O5B-PA
3	C	240	FAD	C4B-C5B-O5B-PA
3	F	240	FAD	C4B-C5B-O5B-PA
3	E	240	FAD	PA-O3P-P-O2P
3	A	240	FAD	O4B-C4B-C5B-O5B
3	C	240	FAD	O4B-C4B-C5B-O5B

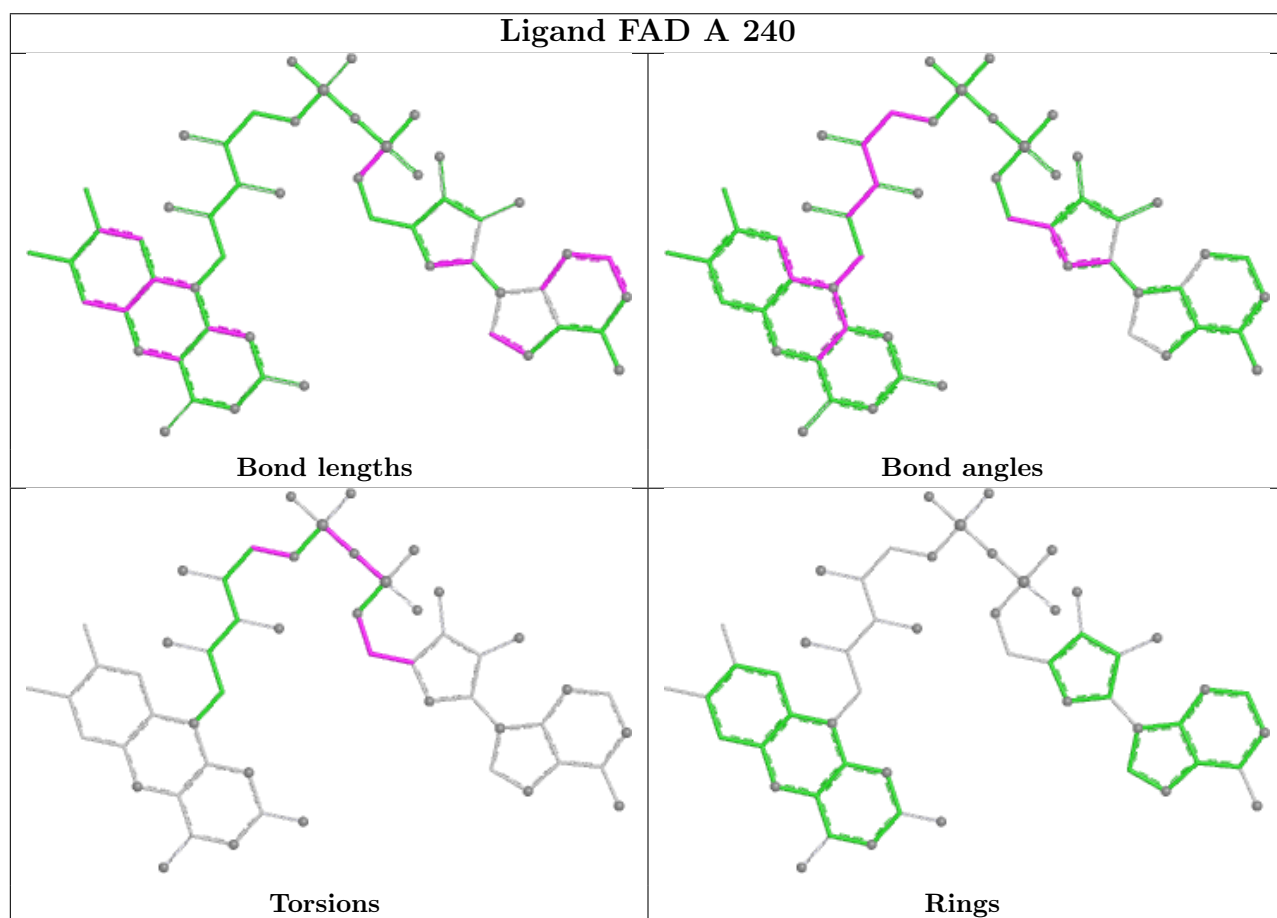
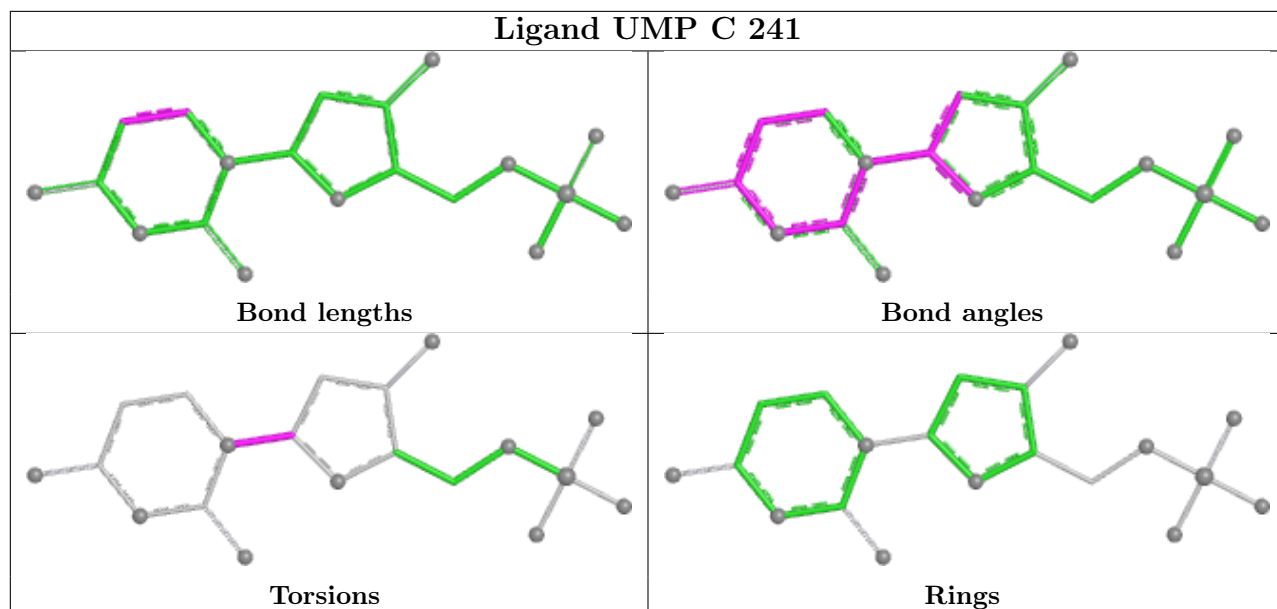
There are no ring outliers.

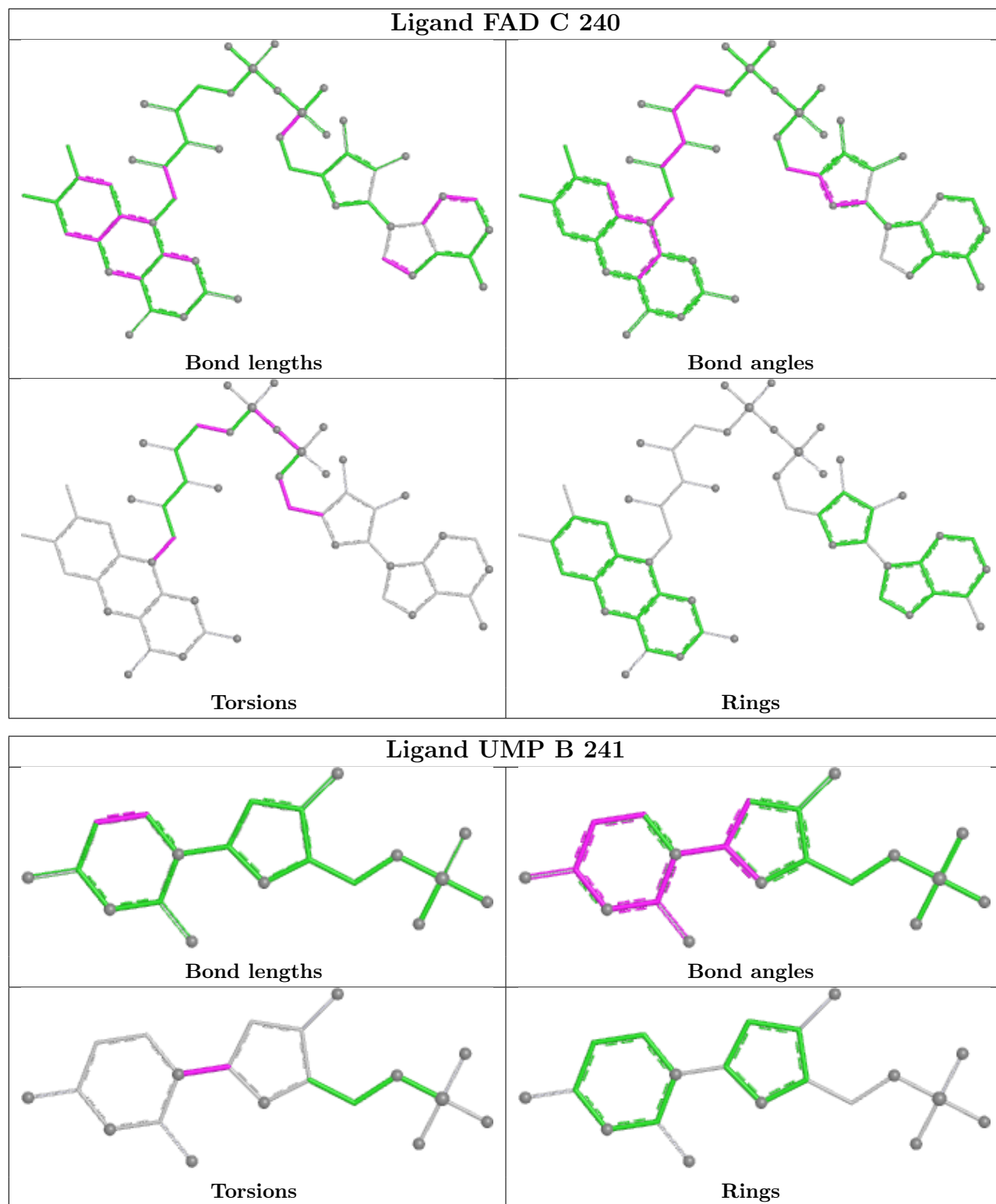
14 monomers are involved in 78 short contacts:

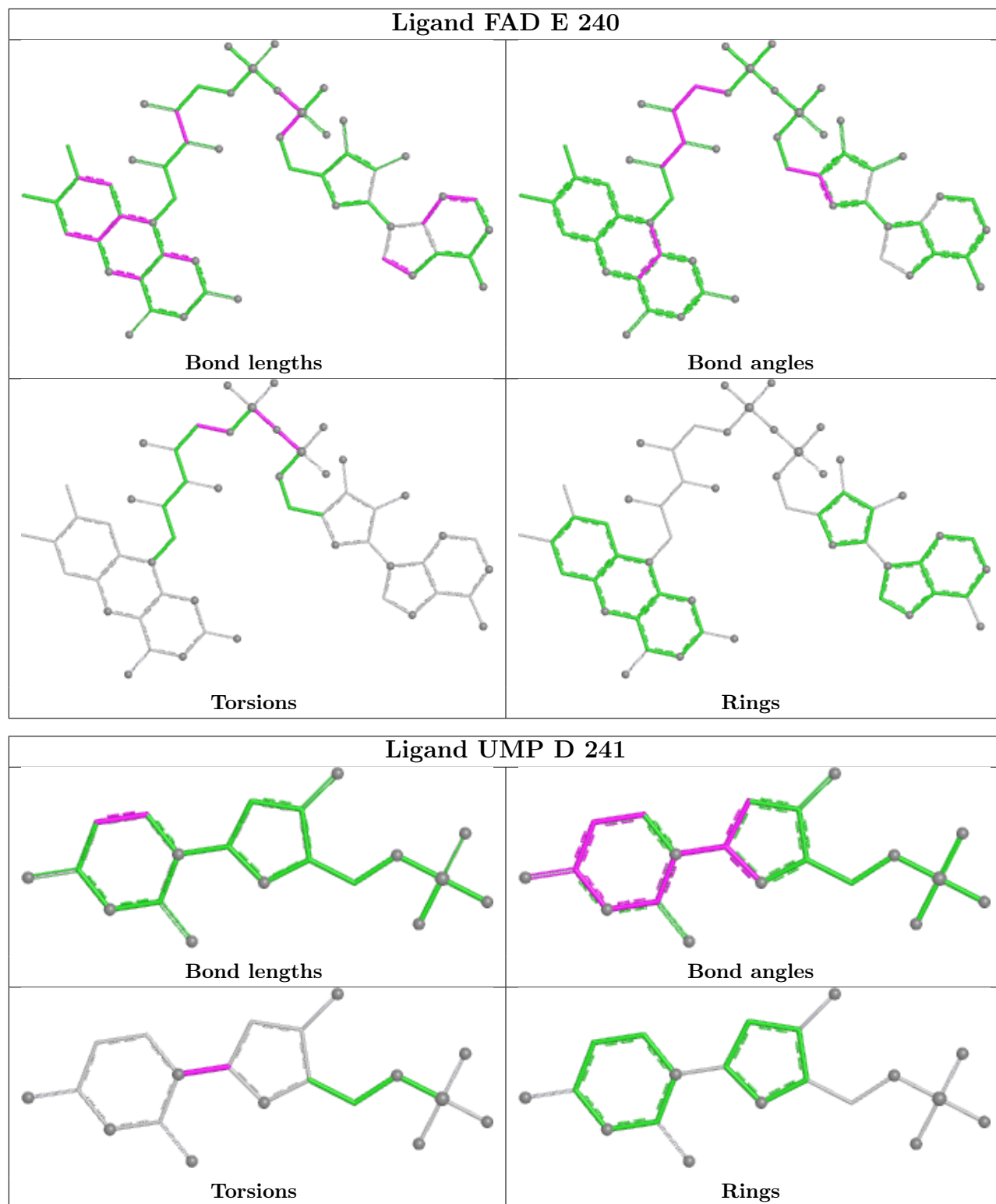
Mol	Chain	Res	Type	Clashes	Symm-Clashes
2	F	241	UMP	6	0
2	E	241	UMP	4	0
2	C	241	UMP	7	0
3	A	240	FAD	9	0
4	E	2	SO4	3	0
3	C	240	FAD	7	0
2	B	241	UMP	6	0
3	E	240	FAD	3	0
2	D	241	UMP	6	0
3	D	240	FAD	9	0
3	F	240	FAD	3	0
2	A	241	UMP	6	0
3	B	240	FAD	8	0
4	E	1	SO4	1	0

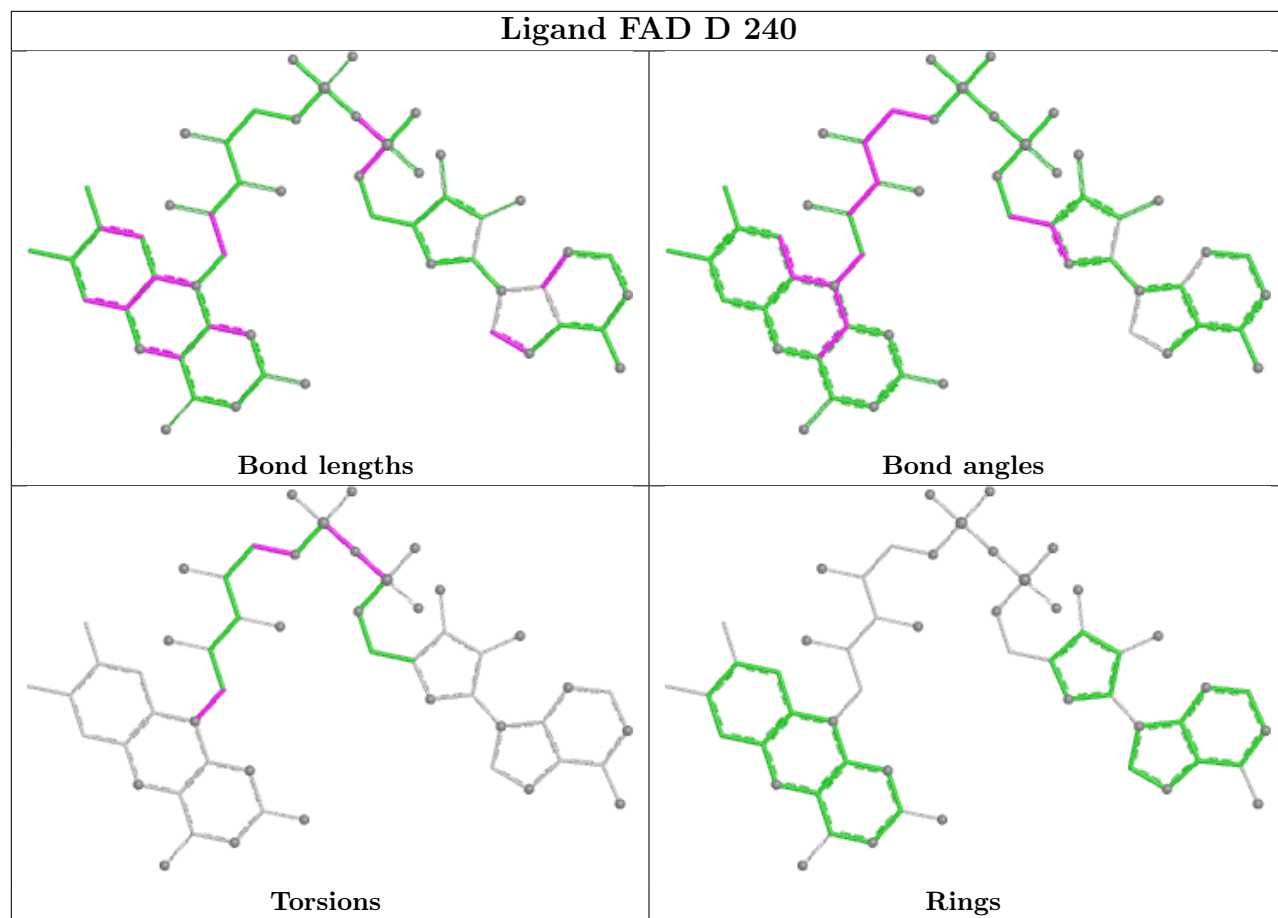
The following is a two-dimensional graphical depiction of Mogul quality analysis of bond lengths, bond angles, torsion angles, and ring geometry for all instances of the Ligand of Interest. In addition, ligands with molecular weight > 250 and outliers as shown on the validation Tables will also be included. For torsion angles, if less than 5% of the Mogul distribution of torsion angles is within 10 degrees of the torsion angle in question, then that torsion angle is considered an outlier. Any bond that is central to one or more torsion angles identified as an outlier by Mogul will be highlighted in the graph. For rings, the root-mean-square deviation (RMSD) between the ring in question and similar rings identified by Mogul is calculated over all ring torsion angles. If the average RMSD is greater than 60 degrees and the minimal RMSD between the ring in question and any Mogul-identified rings is also greater than 60 degrees, then that ring is considered an outlier. The outliers are highlighted in purple. The color gray indicates Mogul did not find sufficient equivalents in the CSD to analyse the geometry.

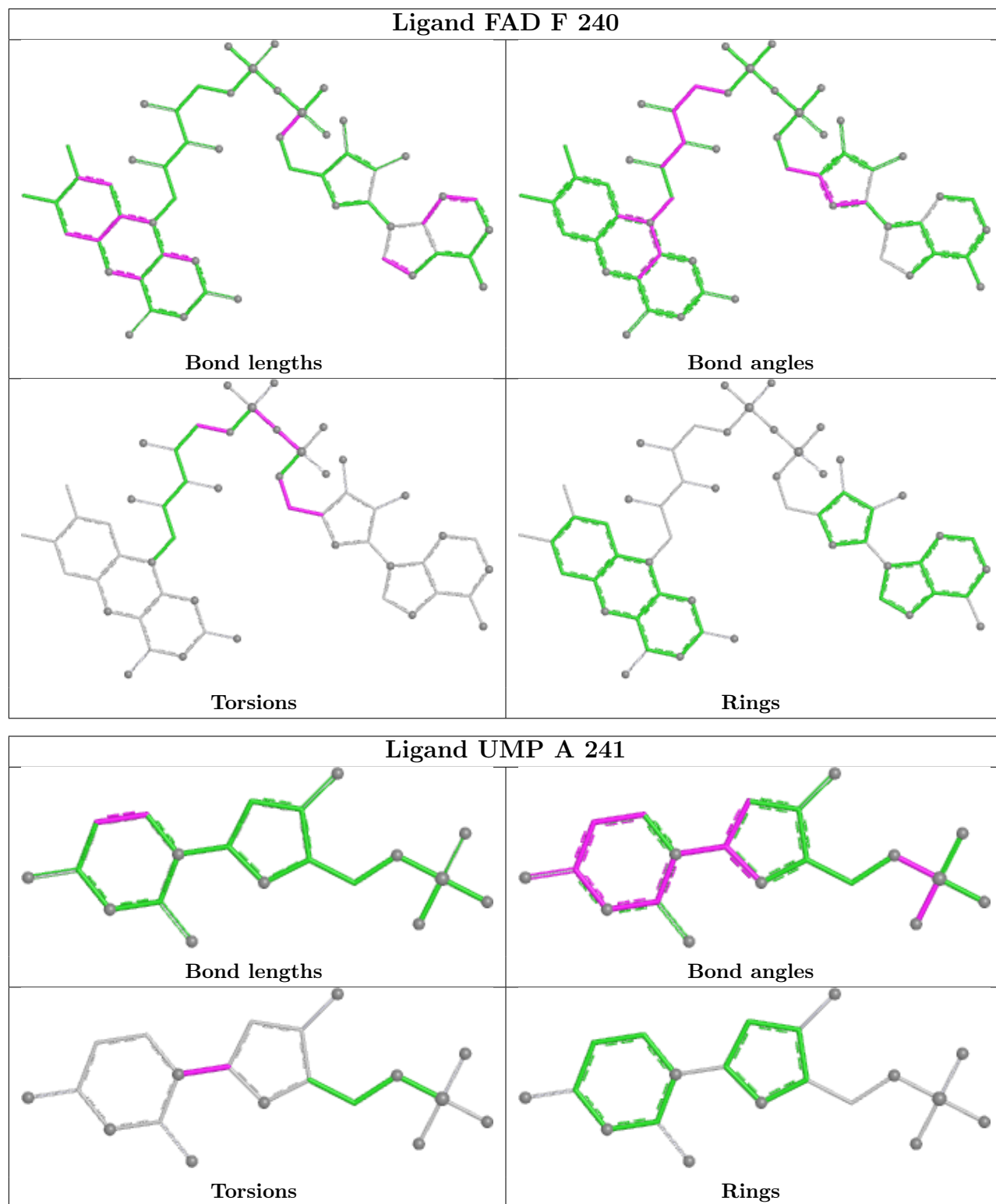


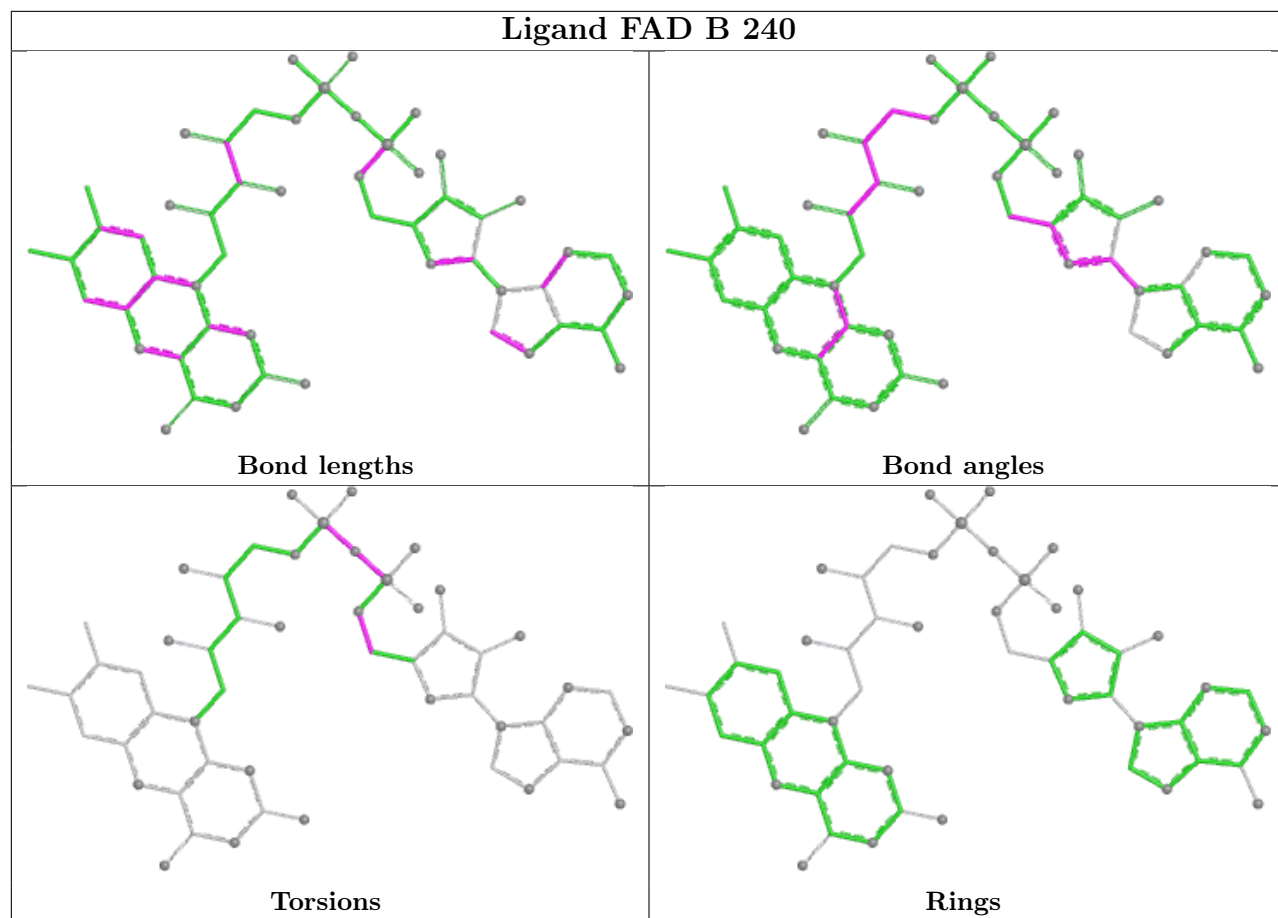












5.7 Other polymers [i](#)

There are no such residues in this entry.

5.8 Polymer linkage issues [i](#)

There are no chain breaks in this entry.

6 Fit of model and data [i](#)

6.1 Protein, DNA and RNA chains [i](#)

In the following table, the column labelled ‘#RSRZ> 2’ contains the number (and percentage) of RSRZ outliers, followed by percent RSRZ outliers for the chain as percentile scores relative to all X-ray entries and entries of similar resolution. The OWAB column contains the minimum, median, 95th percentile and maximum values of the occupancy-weighted average B-factor per residue. The column labelled ‘Q< 0.9’ lists the number of (and percentage) of residues with an average occupancy less than 0.9.

Mol	Chain	Analysed	<RSRZ>	#RSRZ>2	OWAB(Å ²)	Q<0.9
1	A	215/216 (99%)	-0.45	1 (0%) 87 85	19, 30, 53, 79	0
1	B	207/216 (95%)	-0.50	0 100 100	15, 30, 57, 72	0
1	C	207/216 (95%)	-0.63	0 100 100	14, 25, 43, 54	0
1	D	207/216 (95%)	-0.46	2 (0%) 79 76	18, 32, 51, 67	0
1	E	207/216 (95%)	-0.34	0 100 100	20, 34, 53, 65	0
1	F	207/216 (95%)	-0.30	0 100 100	20, 37, 57, 71	0
All	All	1250/1296 (96%)	-0.45	3 (0%) 92 90	14, 31, 53, 79	0

All (3) RSRZ outliers are listed below:

Mol	Chain	Res	Type	RSRZ
1	D	230	LYS	2.4
1	A	52	ASP	2.2
1	D	120	SER	2.0

6.2 Non-standard residues in protein, DNA, RNA chains [i](#)

There are no non-standard protein/DNA/RNA residues in this entry.

6.3 Carbohydrates [i](#)

There are no monosaccharides in this entry.

6.4 Ligands [i](#)

In the following table, the Atoms column lists the number of modelled atoms in the group and the number defined in the chemical component dictionary. The B-factors column lists the minimum,

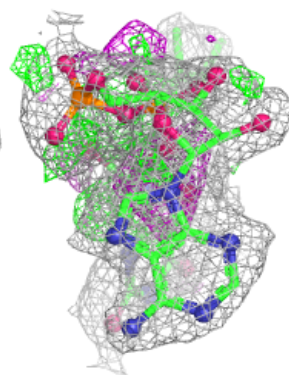
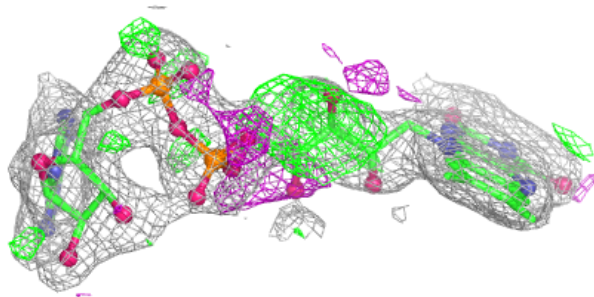
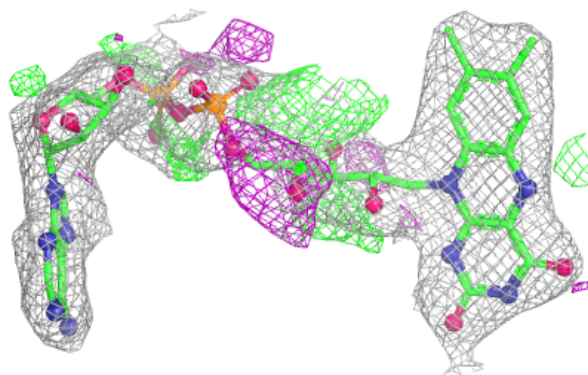
median, 95th percentile and maximum values of B factors of atoms in the group. The column labelled 'Q< 0.9' lists the number of atoms with occupancy less than 0.9.

Mol	Type	Chain	Res	Atoms	RSCC	RSR	B-factors(Å ²)	Q<0.9
4	SO4	D	3	5/5	0.73	0.28	117,117,118,118	0
4	SO4	C	9	5/5	0.78	0.15	83,84,84,84	0
4	SO4	E	1	5/5	0.79	0.17	89,89,90,90	0
4	SO4	D	6	5/5	0.82	0.14	90,90,90,91	0
4	SO4	A	11	5/5	0.82	0.18	82,82,82,83	0
4	SO4	F	7	5/5	0.83	0.14	96,96,96,96	0
4	SO4	A	5	5/5	0.85	0.15	79,80,81,81	0
4	SO4	C	8	5/5	0.86	0.14	74,75,76,76	0
4	SO4	A	10	5/5	0.86	0.13	69,70,70,71	0
3	FAD	A	240	53/53	0.88	0.12	18,27,47,50	0
3	FAD	B	240	53/53	0.88	0.12	27,34,51,57	0
4	SO4	E	2	5/5	0.88	0.28	119,119,120,120	0
3	FAD	F	240	53/53	0.88	0.13	29,36,50,54	0
3	FAD	C	240	53/53	0.89	0.12	17,25,40,44	0
3	FAD	E	240	53/53	0.90	0.12	22,27,45,50	0
3	FAD	D	240	53/53	0.91	0.11	18,26,41,48	0
2	UMP	D	241	20/20	0.92	0.11	39,40,44,44	0
2	UMP	E	241	20/20	0.92	0.09	28,32,38,41	0
4	SO4	C	4	5/5	0.93	0.08	71,71,72,73	0
2	UMP	F	241	20/20	0.93	0.10	34,38,42,43	0
2	UMP	C	241	20/20	0.94	0.08	26,28,32,33	0
2	UMP	A	241	20/20	0.94	0.09	24,28,32,35	0
2	UMP	B	241	20/20	0.94	0.09	22,26,32,33	0

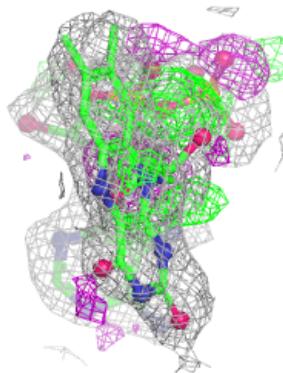
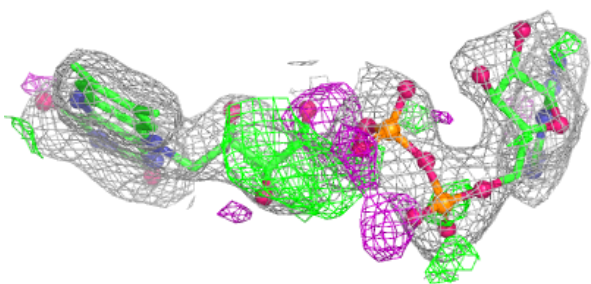
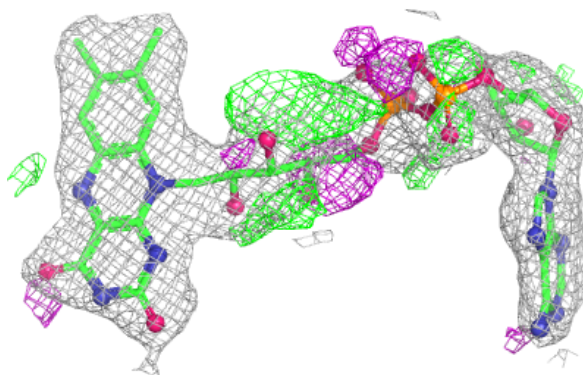
The following is a graphical depiction of the model fit to experimental electron density of all instances of the Ligand of Interest. In addition, ligands with molecular weight > 250 and outliers as shown on the geometry validation Tables will also be included. Each fit is shown from different orientation to approximate a three-dimensional view.

Electron density around FAD A 240:

$2mF_o-DF_c$ (at 0.7 rmsd) in gray
 mF_o-DF_c (at 3 rmsd) in purple (negative)
and green (positive)

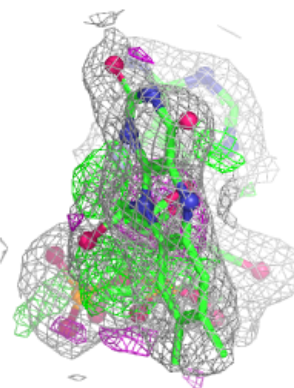
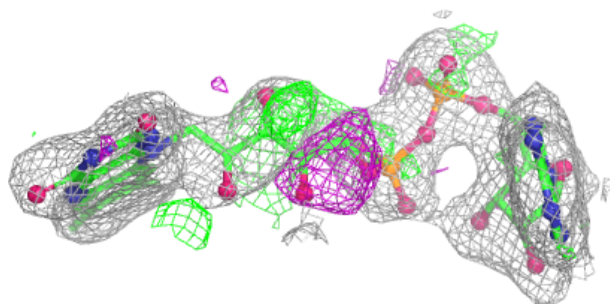
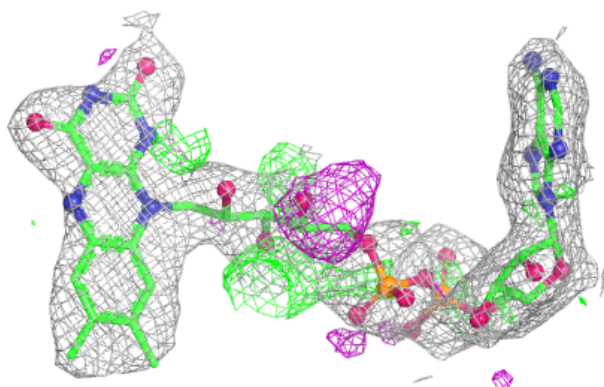
**Electron density around FAD B 240:**

$2mF_o-DF_c$ (at 0.7 rmsd) in gray
 mF_o-DF_c (at 3 rmsd) in purple (negative)
and green (positive)

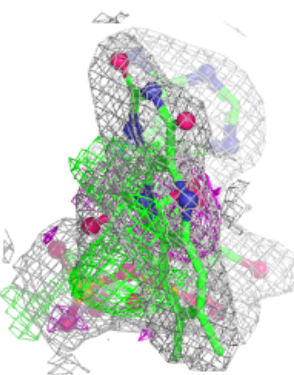
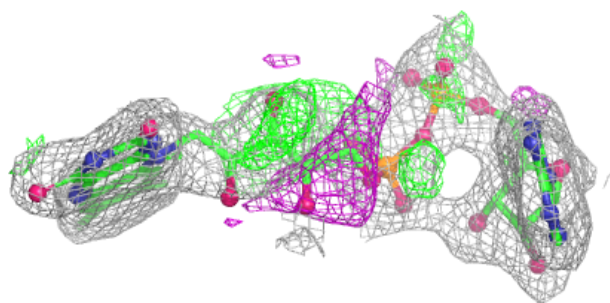
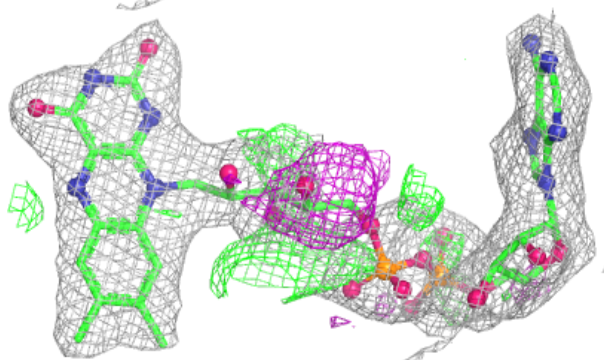


Electron density around FAD F 240:

$2mF_o-DF_c$ (at 0.7 rmsd) in gray
 mF_o-DF_c (at 3 rmsd) in purple (negative)
and green (positive)

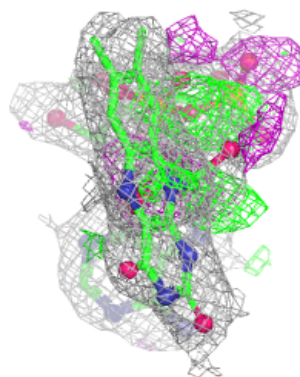
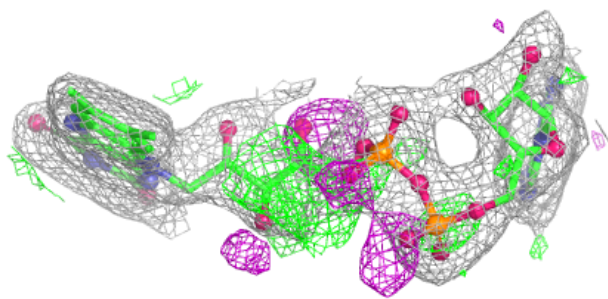
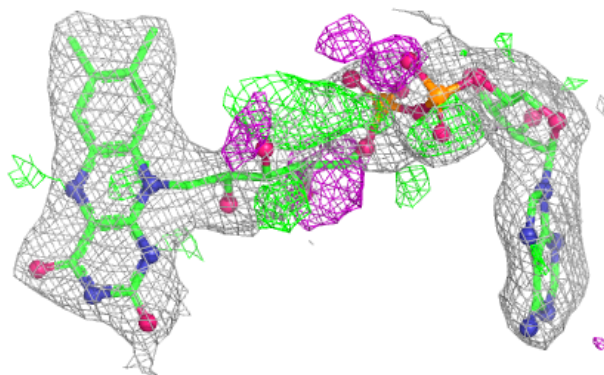
**Electron density around FAD C 240:**

$2mF_o-DF_c$ (at 0.7 rmsd) in gray
 mF_o-DF_c (at 3 rmsd) in purple (negative)
and green (positive)

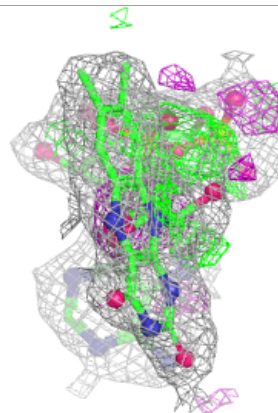
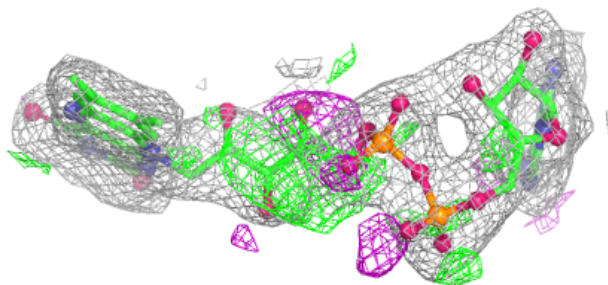
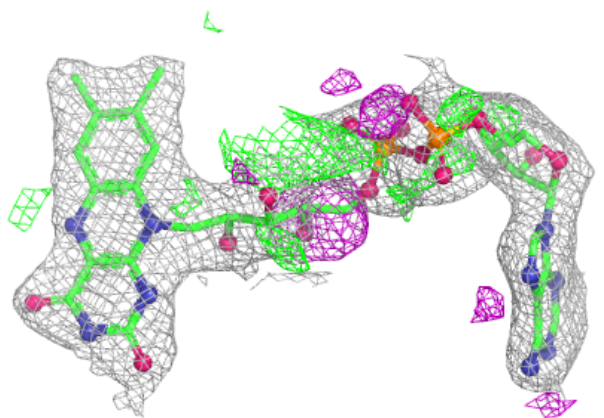


Electron density around FAD E 240:

$2mF_o-DF_c$ (at 0.7 rmsd) in gray
 mF_o-DF_c (at 3 rmsd) in purple (negative)
and green (positive)

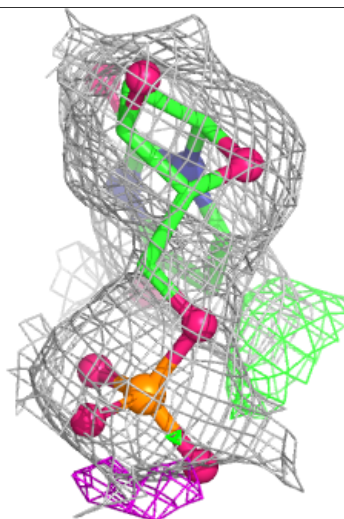
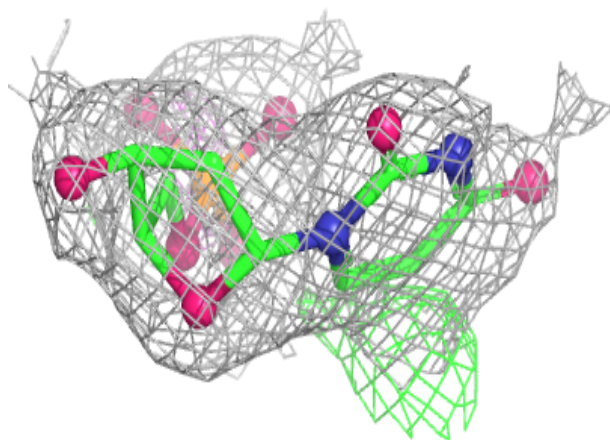
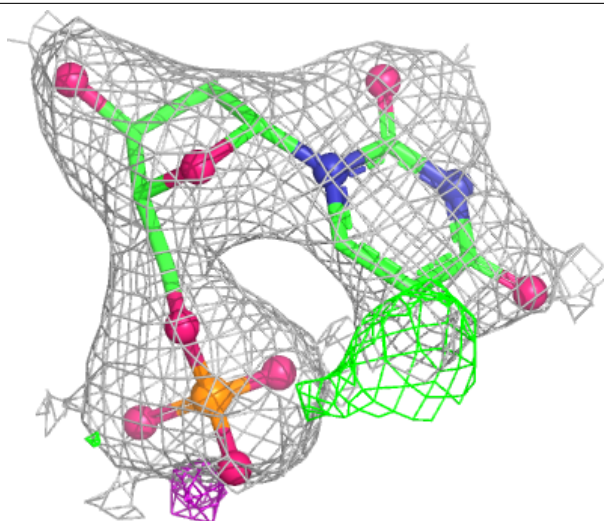
**Electron density around FAD D 240:**

$2mF_o-DF_c$ (at 0.7 rmsd) in gray
 mF_o-DF_c (at 3 rmsd) in purple (negative)
and green (positive)



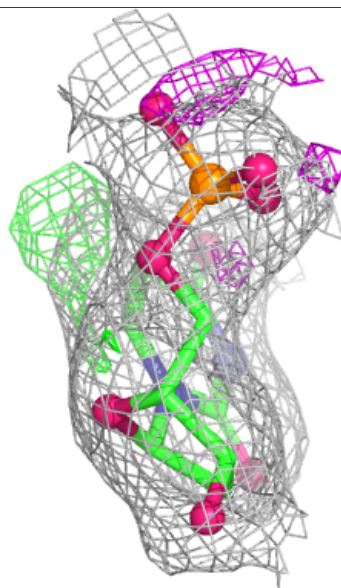
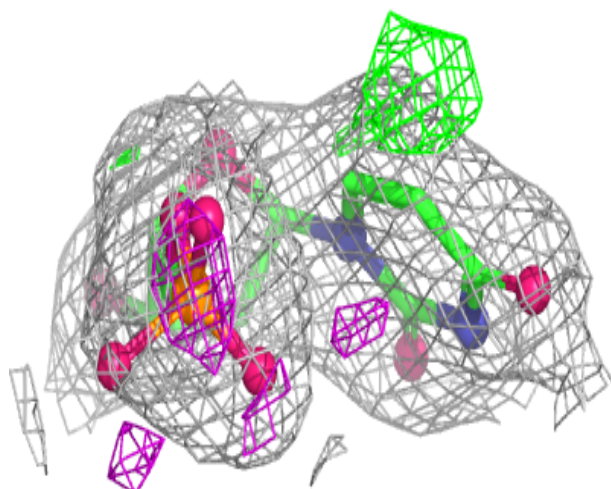
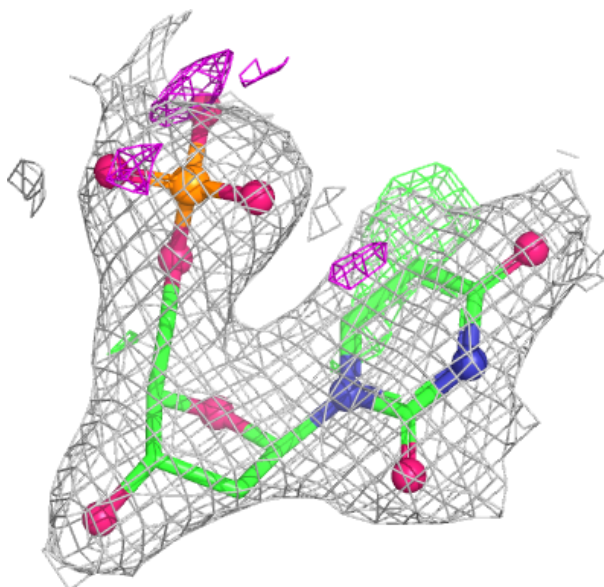
Electron density around UMP D 241:

$2mF_o-DF_c$ (at 0.7 rmsd) in gray
 mF_o-DF_c (at 3 rmsd) in purple (negative)
and green (positive)



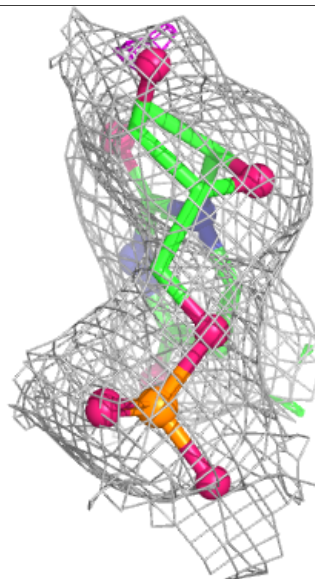
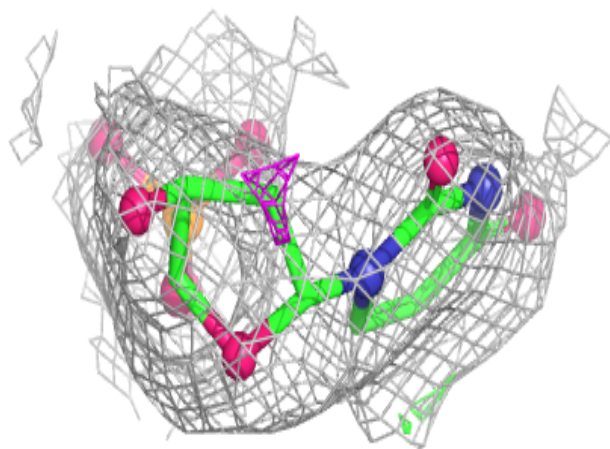
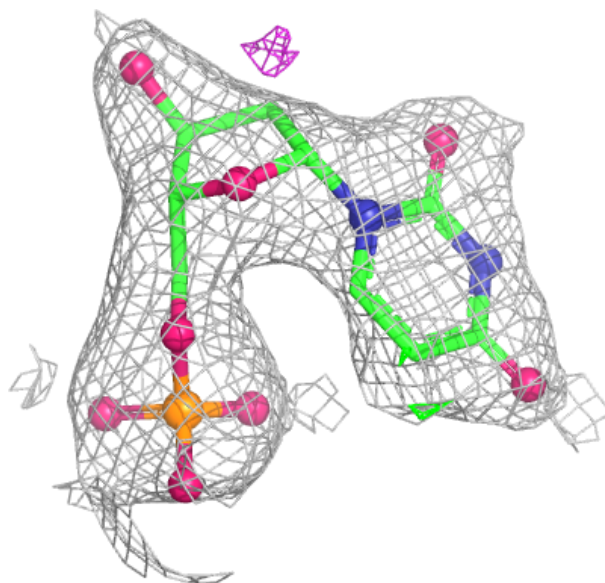
Electron density around UMP E 241:

$2mF_o-DF_c$ (at 0.7 rmsd) in gray
 mF_o-DF_c (at 3 rmsd) in purple (negative)
and green (positive)



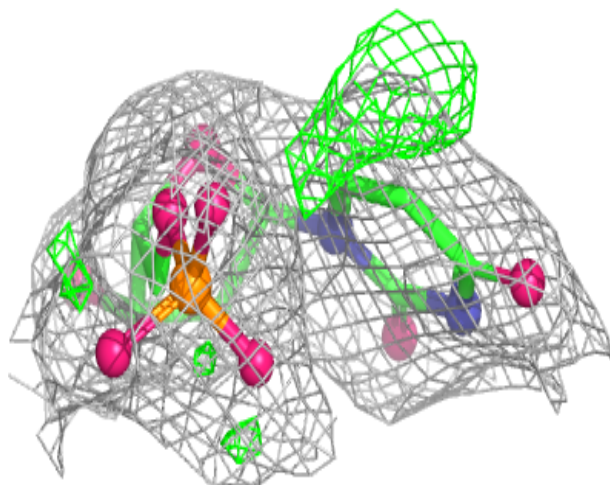
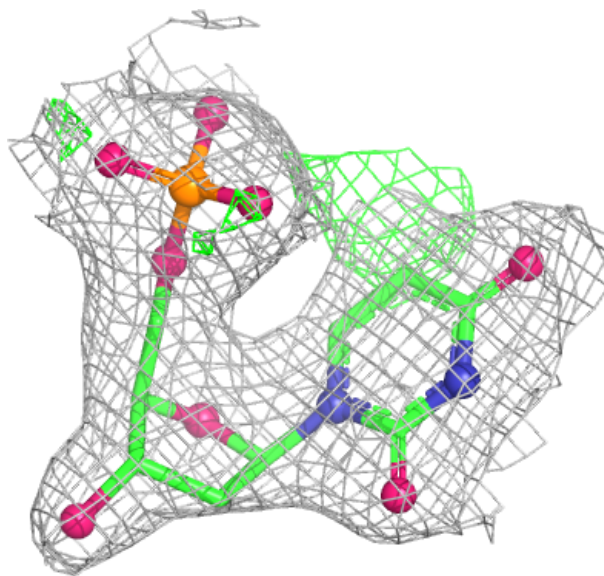
Electron density around UMP F 241:

$2mF_o-DF_c$ (at 0.7 rmsd) in gray
 mF_o-DF_c (at 3 rmsd) in purple (negative)
and green (positive)



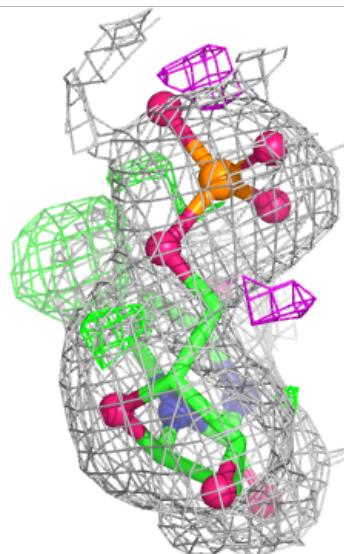
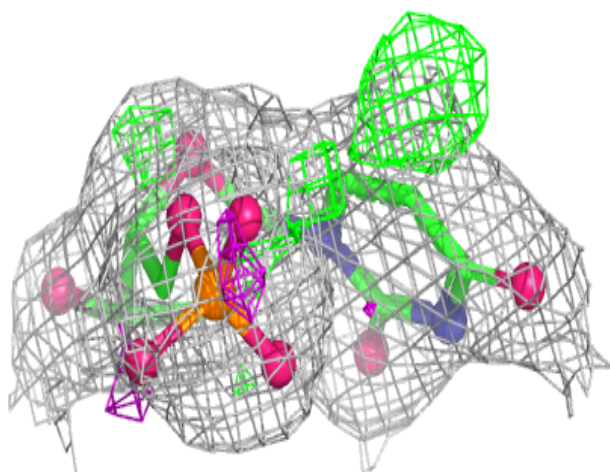
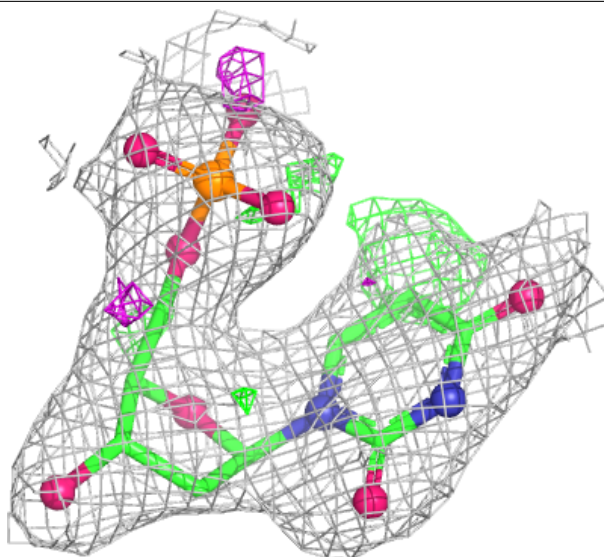
Electron density around UMP C 241:

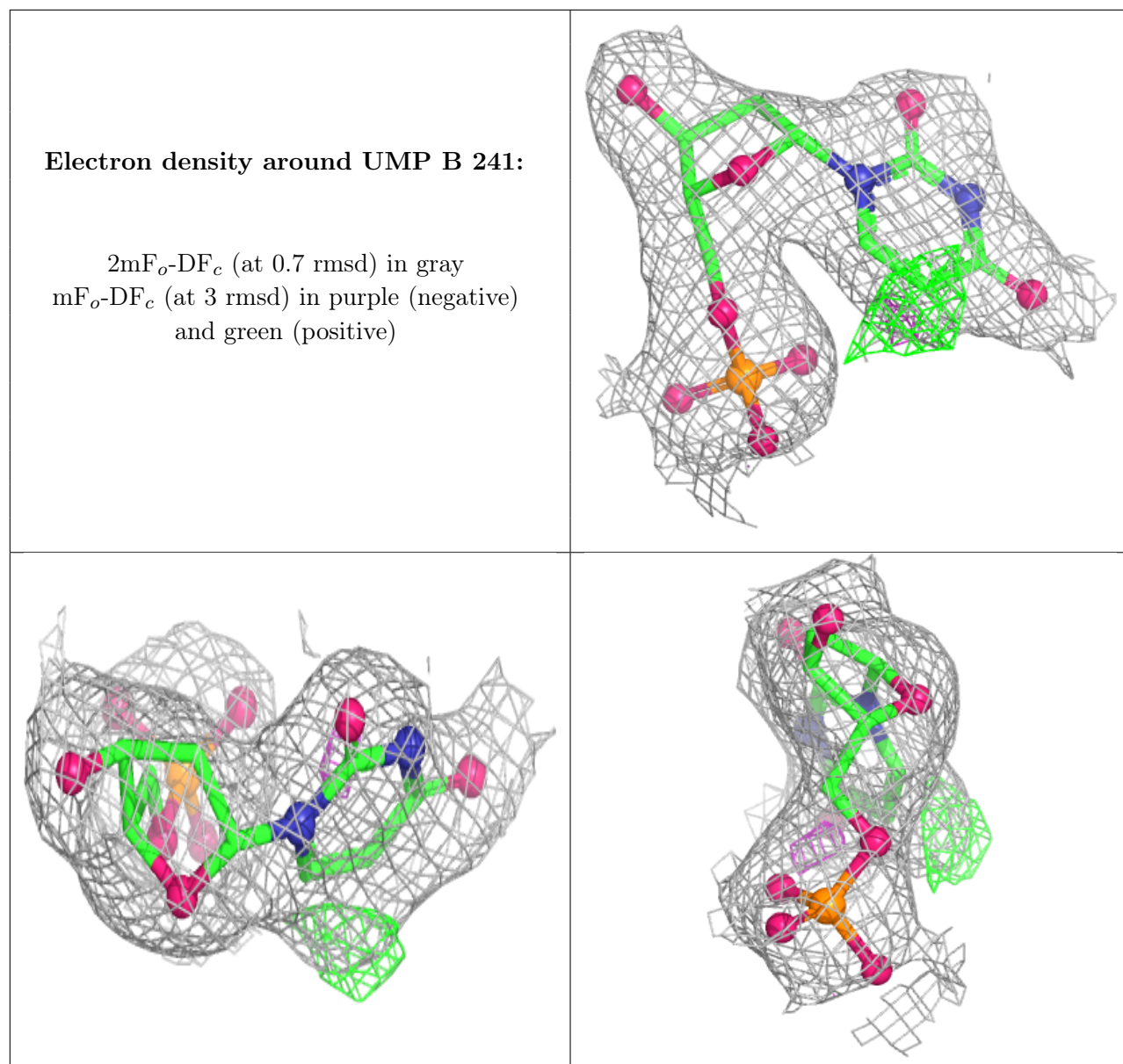
$2mF_o-DF_c$ (at 0.7 rmsd) in gray
 mF_o-DF_c (at 3 rmsd) in purple (negative)
and green (positive)



Electron density around UMP A 241:

$2mF_o-DF_c$ (at 0.7 rmsd) in gray
 mF_o-DF_c (at 3 rmsd) in purple (negative)
and green (positive)





6.5 Other polymers [\(i\)](#)

There are no such residues in this entry.