



# Full wwPDB X-ray Structure Validation Report ⓘ

Oct 24, 2023 – 05:49 PM EDT

PDB ID : 3ADU  
Title : Human PPARgamma ligand-binding domain in complex with 5-methoxy-indole acetate  
Authors : Waku, T.; Shiraki, T.; Oyama, T.; Morikawa, K.  
Deposited on : 2010-01-29  
Resolution : 2.77 Å(reported)

This is a Full wwPDB X-ray Structure Validation Report for a publicly released PDB entry.

We welcome your comments at [validation@mail.wwpdb.org](mailto:validation@mail.wwpdb.org)

A user guide is available at

<https://www.wwpdb.org/validation/2017/XrayValidationReportHelp>

with specific help available everywhere you see the ⓘ symbol.

The types of validation reports are described at

<http://www.wwpdb.org/validation/2017/FAQs#types>.

---

The following versions of software and data (see [references ⓘ](#)) were used in the production of this report:

MolProbity : 4.02b-467  
Mogul : 1.8.5 (274361), CSD as541be (2020)  
Xtriage (Phenix) : 1.13  
EDS : 2.36  
Percentile statistics : 20191225.v01 (using entries in the PDB archive December 25th 2019)  
Refmac : 5.8.0158  
CCP4 : 7.0.044 (Gargrove)  
Ideal geometry (proteins) : Engh & Huber (2001)  
Ideal geometry (DNA, RNA) : Parkinson et al. (1996)  
Validation Pipeline (wwPDB-VP) : 2.36

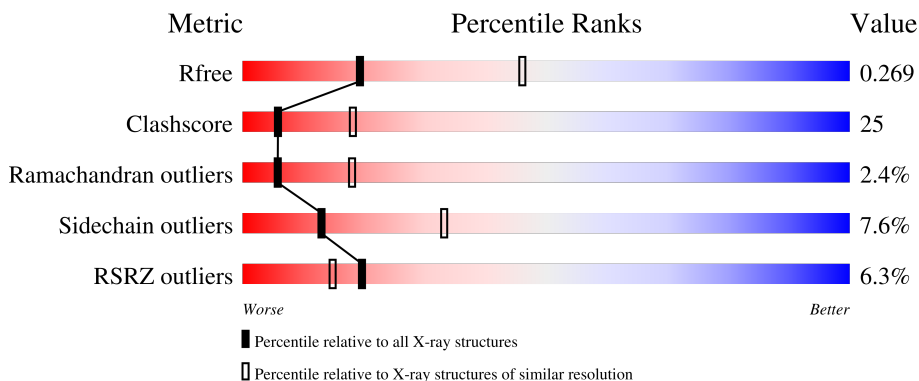
# 1 Overall quality at a glance

The following experimental techniques were used to determine the structure:

*X-RAY DIFFRACTION*

The reported resolution of this entry is 2.77 Å.

Percentile scores (ranging between 0-100) for global validation metrics of the entry are shown in the following graphic. The table shows the number of entries on which the scores are based.



Metric	Whole archive (#Entries)	Similar resolution (#Entries, resolution range(Å))
$R_{free}$	130704	4107 (2.80-2.76)
Clashscore	141614	4575 (2.80-2.76)
Ramachandran outliers	138981	4487 (2.80-2.76)
Sidechain outliers	138945	4489 (2.80-2.76)
RSRZ outliers	127900	4027 (2.80-2.76)

The table below summarises the geometric issues observed across the polymeric chains and their fit to the electron density. The red, orange, yellow and green segments of the lower bar indicate the fraction of residues that contain outliers for  $\geq 3$ , 2, 1 and 0 types of geometric quality criteria respectively. A grey segment represents the fraction of residues that are not modelled. The numeric value for each fraction is indicated below the corresponding segment, with a dot representing fractions  $\leq 5\%$ . The upper red bar (where present) indicates the fraction of residues that have poor fit to the electron density. The numeric value is given above the bar.

Mol	Chain	Length	Quality of chain
1	A	287	
1	B	287	

The following table lists non-polymeric compounds, carbohydrate monomers and non-standard residues in protein, DNA, RNA chains that are outliers for geometric or electron-density-fit criteria:

Mol	Type	Chain	Res	Chirality	Geometry	Clashes	Electron density
2	MYI	B	4	-	-	-	X

## 2 Entry composition

There are 3 unique types of molecules in this entry. The entry contains 4329 atoms, of which 0 are hydrogens and 0 are deuteriums.

In the tables below, the ZeroOcc column contains the number of atoms modelled with zero occupancy, the AltConf column contains the number of residues with at least one atom in alternate conformation and the Trace column contains the number of residues modelled with at most 2 atoms.

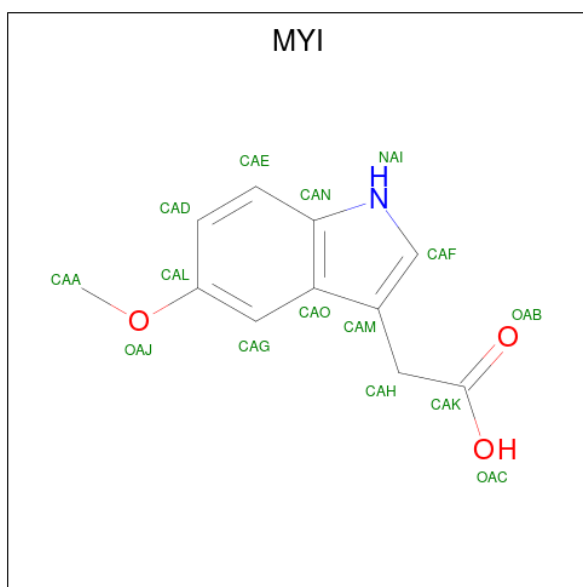
- Molecule 1 is a protein called Peroxisome proliferator-activated receptor gamma.

Mol	Chain	Residues	Atoms					ZeroOcc	AltConf	Trace
			Total	C	N	O	S			
1	A	259	2057	1325	335	387	10	0	0	0
1	B	261	2093	1354	343	387	9	0	0	0

There are 8 discrepancies between the modelled and reference sequences:

Chain	Residue	Modelled	Actual	Comment	Reference
A	191	GLY	-	expression tag	UNP P37231
A	192	SER	-	expression tag	UNP P37231
A	193	HIS	-	expression tag	UNP P37231
A	194	MET	-	expression tag	UNP P37231
B	191	GLY	-	expression tag	UNP P37231
B	192	SER	-	expression tag	UNP P37231
B	193	HIS	-	expression tag	UNP P37231
B	194	MET	-	expression tag	UNP P37231

- Molecule 2 is (5-methoxy-1H-indol-3-yl)acetic acid (three-letter code: MYI) (formula: C<sub>11</sub>H<sub>11</sub>NO<sub>3</sub>).



Mol	Chain	Residues	Atoms				ZeroOcc	AltConf
2	A	1	Total	C	N	O	0	0
			15	11	1	3		
2	A	1	Total	C	N	O	0	0
			15	11	1	3		
2	B	1	Total	C	N	O	0	0
			15	11	1	3		
2	B	1	Total	C	N	O	0	0
			15	11	1	3		
2	B	1	Total	C	N	O	0	0
			15	11	1	3		

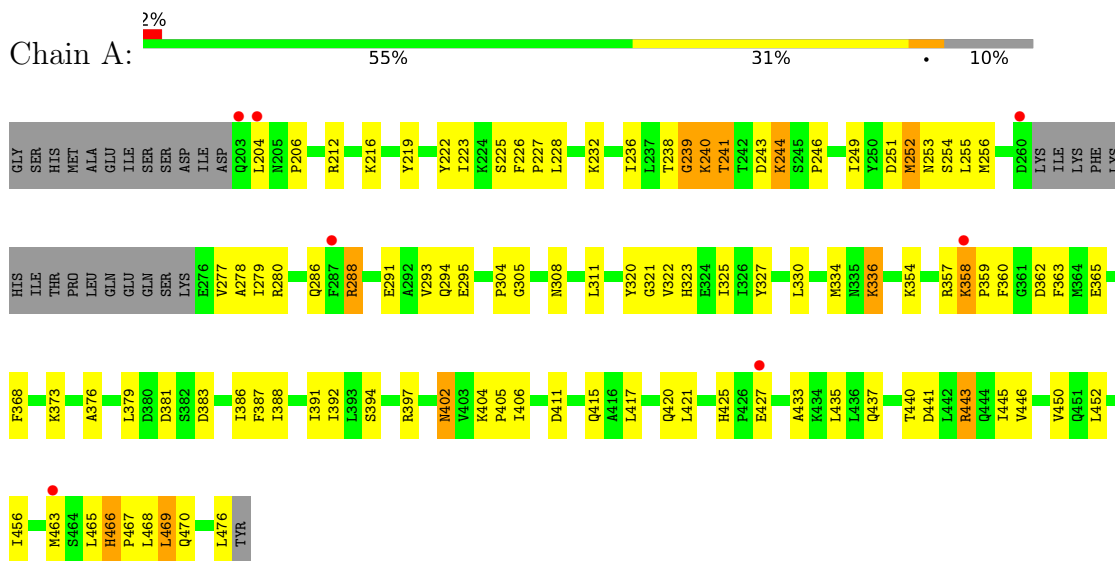
- Molecule 3 is water.

Mol	Chain	Residues	Atoms		ZeroOcc	AltConf
3	A	64	Total	O	0	0
			64	64		
3	B	40	Total	O	0	0
			40	40		

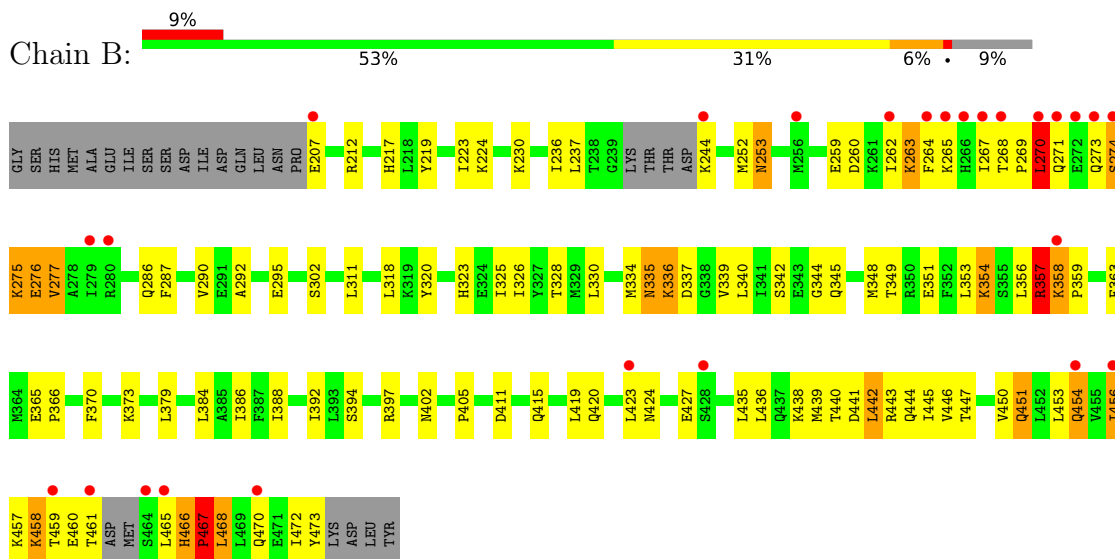
### 3 Residue-property plots [i](#)

These plots are drawn for all protein, RNA, DNA and oligosaccharide chains in the entry. The first graphic for a chain summarises the proportions of the various outlier classes displayed in the second graphic. The second graphic shows the sequence view annotated by issues in geometry and electron density. Residues are color-coded according to the number of geometric quality criteria for which they contain at least one outlier: green = 0, yellow = 1, orange = 2 and red = 3 or more. A red dot above a residue indicates a poor fit to the electron density ( $RSRZ > 2$ ). Stretches of 2 or more consecutive residues without any outlier are shown as a green connector. Residues present in the sample, but not in the model, are shown in grey.

- Molecule 1: Peroxisome proliferator-activated receptor gamma



- Molecule 1: Peroxisome proliferator-activated receptor gamma



## 4 Data and refinement statistics

Property	Value	Source
Space group	C 1 2 1	Depositor
Cell constants a, b, c, $\alpha$ , $\beta$ , $\gamma$	92.95Å 60.60Å 118.19Å 90.00° 104.03° 90.00°	Depositor
Resolution (Å)	43.90 – 2.77 43.93 – 2.77	Depositor EDS
% Data completeness (in resolution range)	92.2 (43.90-2.77) 94.3 (43.93-2.77)	Depositor EDS
$R_{merge}$	0.05	Depositor
$R_{sym}$	(Not available)	Depositor
$\langle I/\sigma(I) \rangle$ <sup>1</sup>	4.58 (at 2.77Å)	Xtrriage
Refinement program	CNS	Depositor
R, $R_{free}$	0.204 , 0.276 0.199 , 0.269	Depositor DCC
$R_{free}$ test set	769 reflections (4.88%)	wwPDB-VP
Wilson B-factor (Å <sup>2</sup> )	46.8	Xtrriage
Anisotropy	0.826	Xtrriage
Bulk solvent $k_{sol}$ (e/Å <sup>3</sup> ), $B_{sol}$ (Å <sup>2</sup> )	0.39 , 69.4	EDS
L-test for twinning <sup>2</sup>	$\langle  L  \rangle = 0.48$ , $\langle L^2 \rangle = 0.31$	Xtrriage
Estimated twinning fraction	No twinning to report.	Xtrriage
$F_o, F_c$ correlation	0.94	EDS
Total number of atoms	4329	wwPDB-VP
Average B, all atoms (Å <sup>2</sup> )	52.0	wwPDB-VP

Xtrriage's analysis on translational NCS is as follows: *The largest off-origin peak in the Patterson function is 6.83% of the height of the origin peak. No significant pseudotranslation is detected.*

<sup>1</sup>Intensities estimated from amplitudes.

<sup>2</sup>Theoretical values of  $\langle |L| \rangle$ ,  $\langle L^2 \rangle$  for acentric reflections are 0.5, 0.333 respectively for untwinned datasets, and 0.375, 0.2 for perfectly twinned datasets.

## 5 Model quality [i](#)

### 5.1 Standard geometry [i](#)

Bond lengths and bond angles in the following residue types are not validated in this section: MYI

The Z score for a bond length (or angle) is the number of standard deviations the observed value is removed from the expected value. A bond length (or angle) with  $|Z| > 5$  is considered an outlier worth inspection. RMSZ is the root-mean-square of all Z scores of the bond lengths (or angles).

Mol	Chain	Bond lengths		Bond angles	
		RMSZ	# Z  >5	RMSZ	# Z  >5
1	A	0.39	0/2090	0.63	1/2818 (0.0%)
1	B	0.36	0/2128	0.59	0/2865
All	All	0.38	0/4218	0.61	1/5683 (0.0%)

There are no bond length outliers.

All (1) bond angle outliers are listed below:

Mol	Chain	Res	Type	Atoms	Z	Observed(°)	Ideal(°)
1	A	206	PRO	N-CA-CB	5.83	110.30	103.30

There are no chirality outliers.

There are no planarity outliers.

### 5.2 Too-close contacts [i](#)

In the following table, the Non-H and H(model) columns list the number of non-hydrogen atoms and hydrogen atoms in the chain respectively. The H(added) column lists the number of hydrogen atoms added and optimized by MolProbity. The Clashes column lists the number of clashes within the asymmetric unit, whereas Symm-Clashes lists symmetry-related clashes.

Mol	Chain	Non-H	H(model)	H(added)	Clashes	Symm-Clashes
1	A	2057	0	2096	86	0
1	B	2093	0	2158	131	0
2	A	30	0	20	1	0
2	B	45	0	30	8	0
3	A	64	0	0	6	0
3	B	40	0	0	1	0
All	All	4329	0	4304	215	0



The all-atom clashscore is defined as the number of clashes found per 1000 atoms (including hydrogen atoms). The all-atom clashscore for this structure is 25.

All (215) close contacts within the same asymmetric unit are listed below, sorted by their clash magnitude.

Atom-1	Atom-2	Interatomic distance (Å)	Clash overlap (Å)
1:A:241:THR:HG21	1:A:244:LYS:HD3	1.15	1.10
1:B:336:LYS:H	1:B:336:LYS:HD3	1.21	1.06
1:B:451:GLN:HE21	1:B:451:GLN:HA	1.23	1.03
1:B:358:LYS:HB3	1:B:359:PRO:CD	1.86	1.02
1:B:270:LEU:HD13	1:B:270:LEU:H	1.25	0.99
1:A:443:ARG:HE	1:B:444:GLN:NE2	1.67	0.92
1:A:241:THR:OG1	1:A:244:LYS:HB2	1.69	0.92
1:A:241:THR:HG21	1:A:244:LYS:CD	2.00	0.92
1:A:240:LYS:O	1:A:241:THR:HG23	1.74	0.87
1:A:212:ARG:HH12	1:A:420:GLN:HE21	1.20	0.87
1:A:241:THR:CG2	1:A:244:LYS:HD3	2.03	0.86
1:A:288:ARG:HH21	1:A:291:GLU:HG2	1.39	0.85
1:B:358:LYS:HB3	1:B:359:PRO:HD2	1.57	0.84
1:A:325:ILE:HD11	1:A:392:ILE:HG13	1.61	0.82
1:B:260:ASP:HA	1:B:265:LYS:HE2	1.59	0.82
1:B:286:GLN:HG2	2:B:5:MYI:HAE	1.67	0.75
1:B:451:GLN:O	1:B:454:GLN:HG3	1.87	0.75
1:B:270:LEU:H	1:B:270:LEU:CD1	1.99	0.75
1:A:219:TYR:CZ	1:A:223:ILE:HD11	2.23	0.73
1:A:363:PHE:HZ	1:A:456:ILE:HG13	1.54	0.72
1:B:335:ASN:C	1:B:335:ASN:HD22	1.93	0.72
1:B:342:SER:O	1:B:345:GLN:HB2	1.90	0.71
1:B:336:LYS:HD3	1:B:336:LYS:N	2.02	0.70
1:B:397:ARG:NH1	1:B:443:ARG:HH12	1.90	0.70
1:A:441:ASP:O	1:A:445:ILE:HG12	1.92	0.69
1:B:451:GLN:HE21	1:B:451:GLN:CA	2.00	0.69
1:A:446:VAL:O	1:A:450:VAL:HG23	1.93	0.69
1:B:456:ILE:HD13	1:B:456:ILE:O	1.92	0.69
1:B:270:LEU:HD13	1:B:270:LEU:N	2.06	0.68
1:B:384:LEU:O	1:B:388:ILE:HG12	1.94	0.67
1:A:334:MET:HE2	1:A:368:PHE:CE1	2.30	0.67
1:A:433:ALA:O	1:A:437:GLN:HG3	1.95	0.67
1:A:363:PHE:CZ	1:A:456:ILE:HG13	2.30	0.66
1:A:383:ASP:OD2	1:A:425:HIS:HE1	1.78	0.66
1:A:288:ARG:HH11	2:A:1:MYI:HAH	1.60	0.65
1:B:457:LYS:O	1:B:458:LYS:HE3	1.96	0.65
1:B:358:LYS:HB3	1:B:359:PRO:HD3	1.79	0.64

*Continued on next page...*

*Continued from previous page...*

Atom-1	Atom-2	Interatomic distance (Å)	Clash overlap (Å)
1:B:330:LEU:HD11	2:B:4:MYI:HAA	1.80	0.64
1:B:275:LYS:HB2	1:B:275:LYS:NZ	2.13	0.63
1:B:358:LYS:HD2	1:B:359:PRO:HD3	1.79	0.63
1:A:212:ARG:HH12	1:A:420:GLN:NE2	1.94	0.63
1:A:236:ILE:HG23	1:A:244:LYS:O	2.00	0.62
1:A:379:LEU:HD11	1:A:435:LEU:HD13	1.81	0.62
1:B:357:ARG:HG3	1:B:358:LYS:N	2.14	0.62
1:B:253:ASN:HB2	3:B:1073:HOH:O	1.99	0.61
1:B:451:GLN:HA	1:B:451:GLN:NE2	2.06	0.61
1:A:354:LYS:HD3	1:A:365:GLU:CG	2.30	0.61
1:B:274:SER:C	1:B:276:GLU:H	2.03	0.61
1:B:263:LYS:C	1:B:265:LYS:H	2.03	0.61
1:B:357:ARG:HH22	1:B:459:THR:HG23	1.65	0.61
1:B:357:ARG:HE	1:B:358:LYS:HB2	1.66	0.60
1:B:358:LYS:CB	1:B:359:PRO:CD	2.73	0.60
1:B:323:HIS:NE2	2:B:5:MYI:HAG	2.17	0.60
1:B:265:LYS:O	1:B:269:PRO:HD3	2.02	0.60
1:A:452:LEU:O	1:A:456:ILE:HG12	2.01	0.60
1:B:252:MET:CE	1:B:277:VAL:HG21	2.32	0.60
1:B:273:GLN:HE21	1:B:273:GLN:HA	1.67	0.59
1:A:305:GLY:HA2	1:A:308:ASN:HD22	1.67	0.59
1:B:262:ILE:HB	1:B:264:PHE:HD1	1.68	0.59
1:B:335:ASN:ND2	1:B:337:ASP:H	2.01	0.59
1:A:279:ILE:HG23	1:A:463:MET:HE1	1.85	0.59
1:B:453:LEU:O	1:B:457:LYS:HG2	2.03	0.59
1:A:253:ASN:ND2	1:A:256:MET:HE3	2.19	0.58
1:A:279:ILE:HG23	1:A:463:MET:CE	2.34	0.58
1:B:290:VAL:HG21	1:B:473:TYR:CD2	2.39	0.58
1:B:263:LYS:NZ	1:B:263:LYS:HA	2.19	0.57
1:B:458:LYS:HE3	1:B:458:LYS:HA	1.86	0.57
1:B:402:ASN:O	1:B:405:PRO:HD2	2.06	0.56
1:A:411:ASP:O	1:A:415:GLN:HG3	2.05	0.56
1:B:325:ILE:HG23	1:B:388:ILE:HD12	1.87	0.56
1:B:320:TYR:HB2	1:B:397:ARG:HD2	1.87	0.56
1:B:441:ASP:O	1:B:445:ILE:HG12	2.06	0.56
1:A:244:LYS:HG2	3:A:1091:HOH:O	2.06	0.56
1:A:325:ILE:HD13	1:A:388:ILE:HG23	1.88	0.56
1:B:336:LYS:H	1:B:336:LYS:CD	2.07	0.55
1:B:373:LYS:HB3	1:B:438:LYS:HZ3	1.70	0.55
1:B:286:GLN:HG2	2:B:5:MYI:CAE	2.34	0.55
1:B:373:LYS:HB3	1:B:438:LYS:NZ	2.21	0.55

*Continued on next page...*

*Continued from previous page...*

Atom-1	Atom-2	Interatomic distance (Å)	Clash overlap (Å)
1:B:466:HIS:O	1:B:467:PRO:C	2.44	0.55
1:B:460:GLU:HG3	1:B:461:THR:N	2.22	0.54
1:A:288:ARG:O	1:A:291:GLU:HB3	2.07	0.54
1:B:259:GLU:HA	1:B:264:PHE:CE1	2.43	0.54
1:A:465:LEU:O	1:A:470:GLN:HG3	2.08	0.54
1:A:325:ILE:HD11	1:A:392:ILE:CG1	2.35	0.54
1:A:466:HIS:ND1	1:A:467:PRO:HD2	2.23	0.53
1:B:397:ARG:NH1	1:B:443:ARG:NH1	2.56	0.53
1:A:286:GLN:NE2	1:A:466:HIS:H	2.06	0.53
1:B:447:THR:O	1:B:451:GLN:HG2	2.09	0.53
1:B:328:THR:OG1	1:B:442:LEU:HD11	2.09	0.52
1:A:293:VAL:HG11	1:A:468:LEU:HD11	1.91	0.52
1:A:239:GLY:C	1:A:241:THR:H	2.12	0.52
1:B:340:LEU:HG	1:B:344:GLY:HA2	1.90	0.52
1:B:357:ARG:HH22	1:B:459:THR:CG2	2.23	0.52
1:A:358:LYS:HB3	1:A:359:PRO:CD	2.39	0.52
1:A:243:ASP:OD2	1:A:244:LYS:HD2	2.10	0.52
1:B:330:LEU:O	1:B:334:MET:HG2	2.10	0.52
1:B:365:GLU:HB3	1:B:366:PRO:HD3	1.92	0.52
1:B:263:LYS:HA	1:B:263:LYS:HZ1	1.75	0.51
1:A:336:LYS:HG3	3:A:1077:HOH:O	2.10	0.51
1:B:244:LYS:O	1:B:244:LYS:HG3	2.11	0.51
1:A:277:VAL:HG13	1:A:278:ALA:N	2.25	0.51
1:A:222:TYR:CE2	1:A:381:ASP:HB3	2.46	0.51
1:A:334:MET:HE2	1:A:368:PHE:CD1	2.46	0.51
1:B:386:ILE:HD12	1:B:420:GLN:HG2	1.93	0.51
1:A:241:THR:CB	1:A:244:LYS:HB2	2.41	0.50
1:A:320:TYR:CE2	1:A:476:LEU:HD12	2.47	0.50
1:B:262:ILE:HB	1:B:264:PHE:CD1	2.46	0.50
1:A:251:ASP:HB2	1:A:252:MET:SD	2.51	0.50
1:B:263:LYS:O	1:B:263:LYS:HG3	2.11	0.50
1:B:335:ASN:HD22	1:B:337:ASP:H	1.60	0.50
1:B:270:LEU:HD22	1:B:270:LEU:O	2.12	0.49
1:B:273:GLN:HA	1:B:273:GLN:NE2	2.26	0.49
1:B:357:ARG:NH2	1:B:459:THR:HG23	2.28	0.49
1:A:357:ARG:HH11	1:A:357:ARG:HG2	1.78	0.49
1:A:440:THR:HG22	1:B:440:THR:HA	1.93	0.49
1:B:326:ILE:HG23	2:B:3:MYI:HAE	1.94	0.49
1:A:249:ILE:HA	1:A:254:SER:HB3	1.95	0.48
1:B:274:SER:C	1:B:276:GLU:N	2.66	0.48
1:B:275:LYS:HB2	1:B:275:LYS:HZ2	1.76	0.48

*Continued on next page...*

*Continued from previous page...*

Atom-1	Atom-2	Interatomic distance (Å)	Clash overlap (Å)
1:B:397:ARG:HH12	1:B:443:ARG:NH1	2.11	0.48
1:B:457:LYS:C	1:B:458:LYS:HE3	2.33	0.48
1:B:456:ILE:C	1:B:458:LYS:H	2.16	0.48
1:A:394:SER:HB2	1:A:397:ARG:HG2	1.95	0.48
1:B:236:ILE:HG21	1:B:340:LEU:HD11	1.95	0.48
1:B:335:ASN:C	1:B:335:ASN:ND2	2.65	0.48
1:B:453:LEU:HA	1:B:456:ILE:HG22	1.96	0.48
1:B:274:SER:O	1:B:276:GLU:N	2.47	0.47
1:A:354:LYS:HD3	1:A:365:GLU:HG3	1.95	0.47
1:A:244:LYS:CG	3:A:1091:HOH:O	2.62	0.47
1:A:238:THR:O	1:A:240:LYS:N	2.48	0.47
1:A:252:MET:HG2	1:A:253:ASN:N	2.29	0.47
1:B:339:VAL:HG21	2:B:4:MYI:HAAA	1.97	0.47
1:B:394:SER:O	1:B:397:ARG:HG2	2.15	0.47
1:A:330:LEU:HD23	3:A:1013:HOH:O	2.15	0.47
1:B:349:THR:HG22	1:B:351:GLU:H	1.80	0.47
1:B:354:LYS:HD2	1:B:354:LYS:O	2.15	0.46
1:B:457:LYS:HB2	1:B:458:LYS:NZ	2.30	0.46
1:B:460:GLU:HG3	1:B:461:THR:H	1.80	0.46
1:B:268:THR:N	1:B:269:PRO:CD	2.78	0.46
1:B:458:LYS:HE3	1:B:458:LYS:CA	2.46	0.46
1:B:292:ALA:O	1:B:295:GLU:HB2	2.15	0.46
1:B:379:LEU:HD11	1:B:435:LEU:HD13	1.98	0.46
1:A:219:TYR:O	1:A:222:TYR:HB3	2.16	0.46
1:A:240:LYS:NZ	1:A:240:LYS:HB2	2.31	0.46
1:B:339:VAL:HG21	2:B:4:MYI:CAA	2.46	0.46
1:A:386:ILE:HD12	1:A:420:GLN:HG2	1.98	0.45
1:B:454:GLN:HA	1:B:457:LYS:HG2	1.97	0.45
1:A:225:SER:O	1:A:295:GLU:HG2	2.17	0.45
1:B:370:PHE:CZ	1:B:442:LEU:HG	2.51	0.45
1:A:253:ASN:ND2	1:A:256:MET:CE	2.80	0.45
1:A:373:LYS:O	1:A:376:ALA:HB3	2.17	0.45
1:B:267:ILE:C	1:B:270:LEU:HD11	2.36	0.45
1:B:460:GLU:O	1:B:461:THR:C	2.55	0.45
1:B:276:GLU:OE2	1:B:357:ARG:NH1	2.50	0.45
1:A:387:PHE:O	1:A:391:ILE:HG12	2.16	0.44
1:A:240:LYS:O	1:A:241:THR:CG2	2.57	0.44
1:A:358:LYS:HB3	1:A:359:PRO:HD3	2.00	0.44
1:B:265:LYS:C	1:B:269:PRO:HD3	2.37	0.44
1:B:276:GLU:OE2	1:B:357:ARG:HD3	2.17	0.44
1:B:357:ARG:CG	1:B:358:LYS:H	2.30	0.44

*Continued on next page...*

*Continued from previous page...*

Atom-1	Atom-2	Interatomic distance (Å)	Clash overlap (Å)
1:A:239:GLY:O	1:A:241:THR:N	2.48	0.44
1:B:237:LEU:HD12	1:B:237:LEU:H	1.82	0.44
1:B:287:PHE:HA	1:B:473:TYR:CE2	2.52	0.44
1:A:252:MET:HG2	1:A:253:ASN:H	1.82	0.44
1:B:237:LEU:HD23	1:B:335:ASN:OD1	2.17	0.44
1:B:290:VAL:HG21	1:B:473:TYR:HD2	1.81	0.44
1:B:311:LEU:N	1:B:311:LEU:HD22	2.32	0.44
1:A:465:LEU:O	1:A:466:HIS:C	2.56	0.43
1:A:226:PHE:HA	1:A:227:PRO:HD3	1.86	0.43
1:B:219:TYR:CZ	1:B:223:ILE:HD11	2.53	0.43
1:B:271:GLN:O	1:B:273:GLN:HG2	2.18	0.43
1:B:357:ARG:CG	1:B:358:LYS:N	2.75	0.43
1:B:325:ILE:HD11	1:B:392:ILE:HG12	1.99	0.43
1:B:465:LEU:C	1:B:467:PRO:HD2	2.39	0.43
1:B:466:HIS:O	1:B:470:GLN:N	2.43	0.43
1:B:356:LEU:O	1:B:357:ARG:O	2.36	0.43
1:A:311:LEU:HD12	1:A:311:LEU:HA	1.87	0.43
1:B:335:ASN:HD22	1:B:337:ASP:N	2.16	0.43
1:B:363:PHE:O	1:B:366:PRO:HD2	2.18	0.43
1:A:253:ASN:N	1:A:253:ASN:HD22	2.15	0.42
1:A:291:GLU:O	1:A:294:GLN:HB2	2.19	0.42
1:A:402:ASN:O	1:A:406:ILE:HD13	2.19	0.42
1:B:217:HIS:HE1	1:B:302:SER:O	2.01	0.42
1:A:404:LYS:N	1:A:405:PRO:HD2	2.34	0.42
1:A:469:LEU:HD12	1:A:469:LEU:HA	1.91	0.42
1:B:237:LEU:HD12	1:B:237:LEU:N	2.34	0.42
1:B:436:LEU:O	1:B:439:MET:HB2	2.19	0.42
1:B:335:ASN:ND2	1:B:337:ASP:N	2.68	0.42
1:B:453:LEU:O	1:B:456:ILE:HG22	2.19	0.42
1:B:330:LEU:HG	1:B:334:MET:CE	2.50	0.42
1:B:446:VAL:O	1:B:450:VAL:HG23	2.19	0.42
1:A:216:LYS:HE3	1:A:216:LYS:HB2	1.84	0.42
1:B:330:LEU:CD2	1:B:334:MET:HE3	2.50	0.42
1:A:417:LEU:O	1:A:421:LEU:HG	2.20	0.42
1:B:252:MET:HE1	1:B:277:VAL:HG21	2.01	0.41
1:A:212:ARG:HD2	1:A:212:ARG:HA	1.84	0.41
1:B:411:ASP:O	1:B:415:GLN:HG3	2.20	0.41
1:A:321:GLY:O	1:A:325:ILE:HG13	2.20	0.41
1:B:263:LYS:C	1:B:265:LYS:N	2.70	0.41
1:B:357:ARG:O	1:B:358:LYS:O	2.38	0.41
1:A:427:GLU:HB2	3:A:1093:HOH:O	2.19	0.41

*Continued on next page...*

Continued from previous page...

Atom-1	Atom-2	Interatomic distance (Å)	Clash overlap (Å)
1:A:465:LEU:HD23	1:A:470:GLN:HG2	2.02	0.41
1:A:327:TYR:HE1	1:A:446:VAL:HG22	1.84	0.41
1:B:252:MET:HE3	1:B:277:VAL:HG21	2.03	0.41
1:B:286:GLN:NE2	2:B:5:MYI:HNAI	2.19	0.41
1:B:348:MET:SD	1:B:353:LEU:HD21	2.61	0.41
1:B:439:MET:O	1:B:443:ARG:HG2	2.21	0.41
1:B:468:LEU:O	1:B:472:ILE:HG13	2.20	0.41
1:A:323:HIS:HB2	3:A:1071:HOH:O	2.21	0.41
1:A:228:LEU:HD12	1:A:232:LYS:HB3	2.01	0.40
1:A:239:GLY:C	1:A:241:THR:N	2.74	0.40
1:B:419:LEU:HD11	1:B:423:LEU:HD11	2.02	0.40
1:A:360:PHE:C	1:A:362:ASP:H	2.25	0.40
1:B:212:ARG:HA	1:B:212:ARG:NE	2.36	0.40
1:A:252:MET:HG2	1:A:253:ASN:ND2	2.36	0.40

There are no symmetry-related clashes.

## 5.3 Torsion angles [i](#)

### 5.3.1 Protein backbone [i](#)

In the following table, the Percentiles column shows the percent Ramachandran outliers of the chain as a percentile score with respect to all X-ray entries followed by that with respect to entries of similar resolution.

The Analysed column shows the number of residues for which the backbone conformation was analysed, and the total number of residues.

Mol	Chain	Analysed	Favoured	Allowed	Outliers	Percentiles	
1	A	255/287 (89%)	243 (95%)	7 (3%)	5 (2%)	7	22
1	B	255/287 (89%)	229 (90%)	19 (8%)	7 (3%)	5	15
All	All	510/574 (89%)	472 (92%)	26 (5%)	12 (2%)	6	18

All (12) Ramachandran outliers are listed below:

Mol	Chain	Res	Type
1	A	358	LYS
1	B	357	ARG
1	B	358	LYS
1	A	239	GLY

Continued on next page...

*Continued from previous page...*

Mol	Chain	Res	Type
1	B	274	SER
1	A	204	LEU
1	B	275	LYS
1	B	270	LEU
1	B	277	VAL
1	B	467	PRO
1	A	304	PRO
1	A	466	HIS

### 5.3.2 Protein sidechains [i](#)

In the following table, the Percentiles column shows the percent sidechain outliers of the chain as a percentile score with respect to all X-ray entries followed by that with respect to entries of similar resolution.

The Analysed column shows the number of residues for which the sidechain conformation was analysed, and the total number of residues.

Mol	Chain	Analysed	Rotameric	Outliers	Percentiles	
1	A	228/258 (88%)	215 (94%)	13 (6%)	20	48
1	B	234/258 (91%)	212 (91%)	22 (9%)	8	23
All	All	462/516 (90%)	427 (92%)	35 (8%)	13	33

All (35) residues with a non-rotameric sidechain are listed below:

Mol	Chain	Res	Type
1	A	240	LYS
1	A	241	THR
1	A	244	LYS
1	A	246	PRO
1	A	252	MET
1	A	255	LEU
1	A	280	ARG
1	A	288	ARG
1	A	322	VAL
1	A	336	LYS
1	A	402	ASN
1	A	443	ARG
1	A	469	LEU
1	B	207	GLU
1	B	224	LYS

*Continued on next page...*

*Continued from previous page...*

Mol	Chain	Res	Type
1	B	230	LYS
1	B	253	ASN
1	B	263	LYS
1	B	270	LEU
1	B	276	GLU
1	B	318	LEU
1	B	335	ASN
1	B	336	LYS
1	B	354	LYS
1	B	357	ARG
1	B	424	ASN
1	B	427	GLU
1	B	442	LEU
1	B	451	GLN
1	B	454	GLN
1	B	456	ILE
1	B	458	LYS
1	B	466	HIS
1	B	467	PRO
1	B	468	LEU

Sometimes sidechains can be flipped to improve hydrogen bonding and reduce clashes. All (20) such sidechains are listed below:

Mol	Chain	Res	Type
1	A	253	ASN
1	A	283	GLN
1	A	286	GLN
1	A	308	ASN
1	A	415	GLN
1	A	420	GLN
1	A	425	HIS
1	A	430	GLN
1	B	217	HIS
1	B	253	ASN
1	B	273	GLN
1	B	283	GLN
1	B	286	GLN
1	B	308	ASN
1	B	312	ASN
1	B	335	ASN
1	B	424	ASN
1	B	430	GLN

*Continued on next page...*



*Continued from previous page...*

Mol	Chain	Res	Type
1	B	444	GLN
1	B	451	GLN

### 5.3.3 RNA [i](#)

There are no RNA molecules in this entry.

### 5.4 Non-standard residues in protein, DNA, RNA chains [i](#)

There are no non-standard protein/DNA/RNA residues in this entry.

### 5.5 Carbohydrates [i](#)

There are no monosaccharides in this entry.

### 5.6 Ligand geometry [i](#)

5 ligands are modelled in this entry.

In the following table, the Counts columns list the number of bonds (or angles) for which Mogul statistics could be retrieved, the number of bonds (or angles) that are observed in the model and the number of bonds (or angles) that are defined in the Chemical Component Dictionary. The Link column lists molecule types, if any, to which the group is linked. The Z score for a bond length (or angle) is the number of standard deviations the observed value is removed from the expected value. A bond length (or angle) with  $|Z| > 2$  is considered an outlier worth inspection. RMSZ is the root-mean-square of all Z scores of the bond lengths (or angles).

Mol	Type	Chain	Res	Link	Bond lengths			Bond angles		
					Counts	RMSZ	# Z  > 2	Counts	RMSZ	# Z  > 2
2	MYI	B	3	-	15,16,16	1.95	4 (26%)	16,22,22	1.05	1 (6%)
2	MYI	A	1	-	15,16,16	2.06	4 (26%)	16,22,22	1.02	1 (6%)
2	MYI	B	4	-	15,16,16	1.89	3 (20%)	16,22,22	0.93	0
2	MYI	B	5	-	15,16,16	1.93	3 (20%)	16,22,22	0.95	1 (6%)
2	MYI	A	2	-	15,16,16	2.01	4 (26%)	16,22,22	1.05	1 (6%)

In the following table, the Chirals column lists the number of chiral outliers, the number of chiral centers analysed, the number of these observed in the model and the number defined in the Chemical Component Dictionary. Similar counts are reported in the Torsion and Rings columns. '-' means no outliers of that kind were identified.

Mol	Type	Chain	Res	Link	Chirals	Torsions	Rings
2	MYI	B	3	-	-	2/6/6/6	0/2/2/2
2	MYI	A	1	-	-	4/6/6/6	0/2/2/2
2	MYI	B	4	-	-	2/6/6/6	0/2/2/2
2	MYI	B	5	-	-	2/6/6/6	0/2/2/2
2	MYI	A	2	-	-	0/6/6/6	0/2/2/2

All (18) bond length outliers are listed below:

Mol	Chain	Res	Type	Atoms	Z	Observed(Å)	Ideal(Å)
2	A	1	MYI	CAG-CAL	5.02	1.46	1.37
2	B	5	MYI	CAG-CAL	4.80	1.45	1.37
2	A	2	MYI	CAG-CAL	4.79	1.45	1.37
2	B	4	MYI	CAG-CAL	4.62	1.45	1.37
2	B	3	MYI	CAG-CAL	4.50	1.45	1.37
2	A	2	MYI	CAE-CAD	3.31	1.43	1.36
2	B	3	MYI	CAE-CAD	3.25	1.43	1.36
2	B	4	MYI	CAE-CAD	3.18	1.43	1.36
2	B	5	MYI	CAE-CAD	3.04	1.43	1.36
2	A	1	MYI	CAE-CAD	2.93	1.42	1.36
2	A	2	MYI	CAD-CAL	2.88	1.44	1.38
2	B	5	MYI	CAD-CAL	2.83	1.44	1.38
2	B	3	MYI	CAD-CAL	2.80	1.44	1.38
2	B	4	MYI	CAD-CAL	2.75	1.44	1.38
2	A	1	MYI	CAD-CAL	2.73	1.44	1.38
2	A	1	MYI	CAH-CAK	2.63	1.56	1.51
2	B	3	MYI	CAH-CAK	2.15	1.55	1.51
2	A	2	MYI	CAN-NAI	-2.10	1.32	1.38

All (4) bond angle outliers are listed below:

Mol	Chain	Res	Type	Atoms	Z	Observed(°)	Ideal(°)
2	B	3	MYI	CAA-OAJ-CAL	2.30	122.50	117.51
2	A	1	MYI	OAB-CAK-CAH	-2.26	116.60	123.04
2	A	2	MYI	OAB-CAK-CAH	-2.12	117.00	123.04
2	B	5	MYI	OAB-CAK-CAH	-2.06	117.16	123.04

There are no chirality outliers.

All (10) torsion outliers are listed below:

Mol	Chain	Res	Type	Atoms
2	B	5	MYI	CAD-CAL-OAJ-CAA

*Continued on next page...*

*Continued from previous page...*

Mol	Chain	Res	Type	Atoms
2	B	4	MYI	CAG-CAL-OAJ-CAA
2	B	5	MYI	CAG-CAL-OAJ-CAA
2	B	4	MYI	CAD-CAL-OAJ-CAA
2	A	1	MYI	CAG-CAL-OAJ-CAA
2	A	1	MYI	CAD-CAL-OAJ-CAA
2	B	3	MYI	CAD-CAL-OAJ-CAA
2	B	3	MYI	CAG-CAL-OAJ-CAA
2	A	1	MYI	CAM-CAH-CAK-OAB
2	A	1	MYI	CAM-CAH-CAK-OAC

There are no ring outliers.

4 monomers are involved in 9 short contacts:

Mol	Chain	Res	Type	Clashes	Symm-Clashes
2	B	3	MYI	1	0
2	A	1	MYI	1	0
2	B	4	MYI	3	0
2	B	5	MYI	4	0

## 5.7 Other polymers [i](#)

There are no such residues in this entry.

## 5.8 Polymer linkage issues [i](#)

There are no chain breaks in this entry.

## 6 Fit of model and data

### 6.1 Protein, DNA and RNA chains

In the following table, the column labelled ‘#RSRZ > 2’ contains the number (and percentage) of RSRZ outliers, followed by percent RSRZ outliers for the chain as percentile scores relative to all X-ray entries and entries of similar resolution. The OWAB column contains the minimum, median, 95<sup>th</sup> percentile and maximum values of the occupancy-weighted average B-factor per residue. The column labelled ‘Q < 0.9’ lists the number of (and percentage) of residues with an average occupancy less than 0.9.

Mol	Chain	Analysed	<RSRZ>	#RSRZ>2	OWAB(Å <sup>2</sup> )	Q<0.9
1	A	259/287 (90%)	-0.06	7 (2%) 54 49	27, 44, 73, 101	0
1	B	261/287 (90%)	0.44	26 (9%) 7 5	28, 49, 107, 137	0
All	All	520/574 (90%)	0.19	33 (6%) 20 15	27, 46, 90, 137	0

All (33) RSRZ outliers are listed below:

Mol	Chain	Res	Type	RSRZ
1	B	464	SER	9.5
1	B	273	GLN	7.6
1	B	265	LYS	5.8
1	B	271	GLN	5.6
1	B	272	GLU	5.0
1	B	267	ILE	4.6
1	B	270	LEU	4.6
1	B	274	SER	4.6
1	B	266	HIS	4.4
1	B	456	ILE	4.1
1	A	260	ASP	4.0
1	B	264	PHE	3.9
1	A	358	LYS	3.9
1	B	459	THR	3.6
1	B	256	MET	2.8
1	B	454	GLN	2.7
1	B	465	LEU	2.7
1	B	207	GLU	2.6
1	B	262	ILE	2.6
1	B	279	ILE	2.6
1	A	287	PHE	2.5
1	B	423	LEU	2.5
1	A	427	GLU	2.4
1	B	268	THR	2.3

*Continued on next page...*

*Continued from previous page...*

Mol	Chain	Res	Type	RSRZ
1	B	470	GLN	2.3
1	B	461	THR	2.3
1	A	204	LEU	2.1
1	B	428	SER	2.1
1	B	358	LYS	2.1
1	A	463	MET	2.1
1	B	244	LYS	2.0
1	B	280	ARG	2.0
1	A	203	GLN	2.0

## 6.2 Non-standard residues in protein, DNA, RNA chains [i](#)

There are no non-standard protein/DNA/RNA residues in this entry.

## 6.3 Carbohydrates [i](#)

There are no monosaccharides in this entry.

## 6.4 Ligands [i](#)

In the following table, the Atoms column lists the number of modelled atoms in the group and the number defined in the chemical component dictionary. The B-factors column lists the minimum, median, 95<sup>th</sup> percentile and maximum values of B factors of atoms in the group. The column labelled 'Q< 0.9' lists the number of atoms with occupancy less than 0.9.

Mol	Type	Chain	Res	Atoms	RSCC	RSR	B-factors(Å <sup>2</sup> )	Q<0.9
2	MYI	B	4	15/15	0.68	0.42	107,109,110,110	0
2	MYI	B	3	15/15	0.76	0.31	89,90,91,92	0
2	MYI	B	5	15/15	0.77	0.29	102,104,105,105	0
2	MYI	A	1	15/15	0.90	0.24	88,89,91,92	0
2	MYI	A	2	15/15	0.96	0.20	63,66,71,71	0

## 6.5 Other polymers [i](#)

There are no such residues in this entry.