



Full wwPDB X-ray Structure Validation Report ⓘ

Apr 29, 2024 – 03:38 pm BST

PDB ID : 2YOJ
Title : HCV NS5B polymerase complexed with pyridonylindole compound
Authors : Chen, K.X.; Venkatraman, S.; Anilkumar, G.N.; Zeng, Q.; Lesburg, C.A.; Vibulbhan, B.; Yang, W.; Velazquez, F.; Chan, T.-Y.; Bennett, F.; Sannigrahi, M.; Jiang, Y.; Duca, J.S.; Pinto, P.; Gavalas, S.; Huang, Y.; Wu, W.; Selyutin, O.; Agrawal, S.; Feld, B.; Huang, H.-C.; Li, C.; Cheng, K.-C.; Shih, N.-Y.; Kozlowski, J.A.; Rosenblum, S.B.; Njoroge, F.G.
Deposited on : 2012-10-24
Resolution : 1.76 Å(reported)

This is a Full wwPDB X-ray Structure Validation Report for a publicly released PDB entry.

We welcome your comments at validation@mail.wwpdb.org

A user guide is available at

<https://www.wwpdb.org/validation/2017/XrayValidationReportHelp>

with specific help available everywhere you see the ⓘ symbol.

The types of validation reports are described at

<http://www.wwpdb.org/validation/2017/FAQs#types>.

The following versions of software and data (see [references ⓘ](#)) were used in the production of this report:

MolProbity : 4.02b-467
Mogul : 1.8.4, CSD as541be (2020)
Xtriage (Phenix) : 1.13
EDS : 2.36.2
buster-report : 1.1.7 (2018)
Percentile statistics : 20191225.v01 (using entries in the PDB archive December 25th 2019)
Refmac : 5.8.0158
CCP4 : 7.0.044 (Gargrove)
Ideal geometry (proteins) : Engh & Huber (2001)

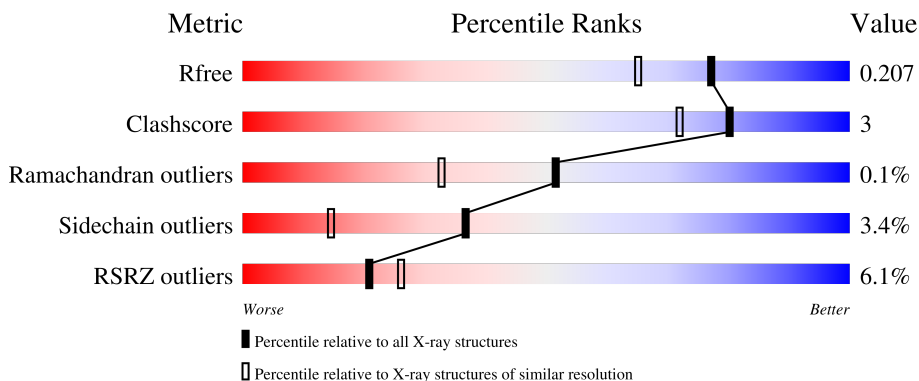
1 Overall quality at a glance

The following experimental techniques were used to determine the structure:

X-RAY DIFFRACTION

The reported resolution of this entry is 1.76 Å.

Percentile scores (ranging between 0-100) for global validation metrics of the entry are shown in the following graphic. The table shows the number of entries on which the scores are based.



Metric	Whole archive (#Entries)	Similar resolution (#Entries, resolution range(Å))
R_{free}	130704	2340 (1.76-1.76)
Clashscore	141614	2466 (1.76-1.76)
Ramachandran outliers	138981	2437 (1.76-1.76)
Sidechain outliers	138945	2437 (1.76-1.76)
RSRZ outliers	127900	2298 (1.76-1.76)

The table below summarises the geometric issues observed across the polymeric chains and their fit to the electron density. The red, orange, yellow and green segments of the lower bar indicate the fraction of residues that contain outliers for ≥ 3 , 2, 1 and 0 types of geometric quality criteria respectively. A grey segment represents the fraction of residues that are not modelled. The numeric value for each fraction is indicated below the corresponding segment, with a dot representing fractions $\leq 5\%$. The upper red bar (where present) indicates the fraction of residues that have poor fit to the electron density. The numeric value is given above the bar.

Mol	Chain	Length	Quality of chain
1	A	585	
1	B	585	

Ideal geometry (DNA, RNA) : Parkinson et al. (1996)
Validation Pipeline (wwPDB-VP) : 2.36.2

2 Entry composition i

There are 4 unique types of molecules in this entry. The entry contains 10444 atoms, of which 0 are hydrogens and 0 are deuteriums.

In the tables below, the ZeroOcc column contains the number of atoms modelled with zero occupancy, the AltConf column contains the number of residues with at least one atom in alternate conformation and the Trace column contains the number of residues modelled with at most 2 atoms.

- Molecule 1 is a protein called RNA-DIRECTED RNA POLYMERASE.

Mol	Chain	Residues	Atoms					ZeroOcc	AltConf	Trace
			Total	C	N	O	S			
1	A	563	4414	2778	784	819	33	0	4	0
1	B	558	4365	2748	772	812	33	0	3	0

There are 34 discrepancies between the modelled and reference sequences:

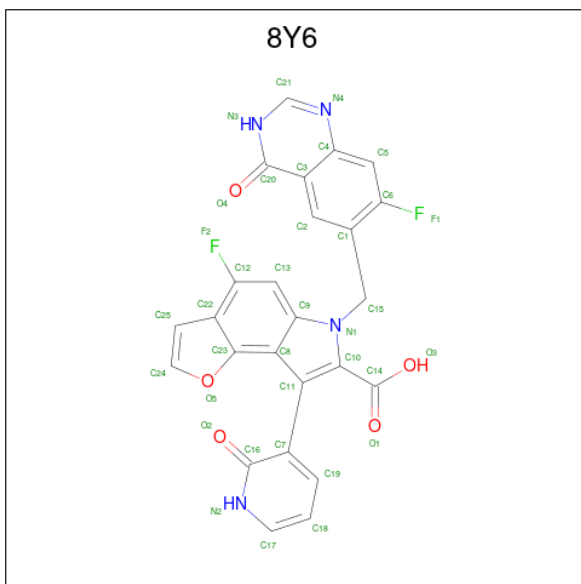
Chain	Residue	Modelled	Actual	Comment	Reference
A	571	GLU	-	expression tag	UNP O92972
A	572	ASN	-	expression tag	UNP O92972
A	573	LEU	-	expression tag	UNP O92972
A	574	TYR	-	expression tag	UNP O92972
A	575	PHE	-	expression tag	UNP O92972
A	576	GLN	-	expression tag	UNP O92972
A	577	GLY	-	expression tag	UNP O92972
A	578	LEU	-	expression tag	UNP O92972
A	579	GLU	-	expression tag	UNP O92972
A	580	HIS	-	expression tag	UNP O92972
A	581	HIS	-	expression tag	UNP O92972
A	582	HIS	-	expression tag	UNP O92972
A	583	HIS	-	expression tag	UNP O92972
A	584	HIS	-	expression tag	UNP O92972
A	585	HIS	-	expression tag	UNP O92972
A	440	GLY	GLU	conflict	UNP O92972
A	520	ILE	THR	conflict	UNP O92972
B	571	GLU	-	expression tag	UNP O92972
B	572	ASN	-	expression tag	UNP O92972
B	573	LEU	-	expression tag	UNP O92972
B	574	TYR	-	expression tag	UNP O92972
B	575	PHE	-	expression tag	UNP O92972
B	576	GLN	-	expression tag	UNP O92972
B	577	GLY	-	expression tag	UNP O92972
B	578	LEU	-	expression tag	UNP O92972

Continued on next page...

Continued from previous page...

Chain	Residue	Modelled	Actual	Comment	Reference
B	579	GLU	-	expression tag	UNP O92972
B	580	HIS	-	expression tag	UNP O92972
B	581	HIS	-	expression tag	UNP O92972
B	582	HIS	-	expression tag	UNP O92972
B	583	HIS	-	expression tag	UNP O92972
B	584	HIS	-	expression tag	UNP O92972
B	585	HIS	-	expression tag	UNP O92972
B	440	GLY	GLU	conflict	UNP O92972
B	520	ILE	THR	conflict	UNP O92972

- Molecule 2 is 4-fluoranyl-6-[(7-fluoranyl-4-oxidanylidene-3H-quinazolin-6-yl)methyl]-8-(2-oxidanylidene-1H-pyridin-3-yl)furo[2,3-e]indole-7-carboxylic acid (three-letter code: 8Y6) (formula: C₂₅H₁₄F₂N₄O₅).



Mol	Chain	Residues	Atoms					ZeroOcc	AltConf
			Total	C	F	N	O		
2	A	1	36	25	2	4	5	0	0
2	B	1	36	25	2	4	5	0	0

- Molecule 3 is PHOSPHATE ION (three-letter code: PO4) (formula: O₄P).



Mol	Chain	Residues	Atoms	ZeroOcc	AltConf
3	A	1	Total O P 5 4 1	0	0
3	A	1	Total O P 5 4 1	0	0
3	B	1	Total O P 5 4 1	0	0
3	B	1	Total O P 5 4 1	0	0

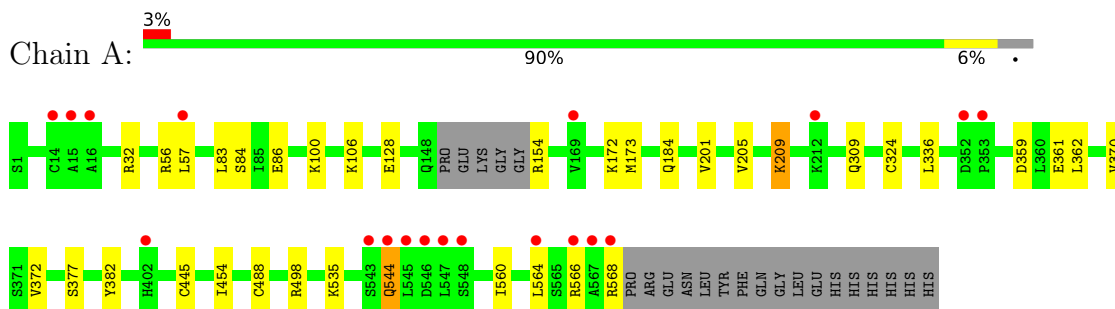
- Molecule 4 is water.

Mol	Chain	Residues	Atoms	ZeroOcc	AltConf
4	A	875	Total O 875 875	0	0
4	B	698	Total O 698 698	0	0

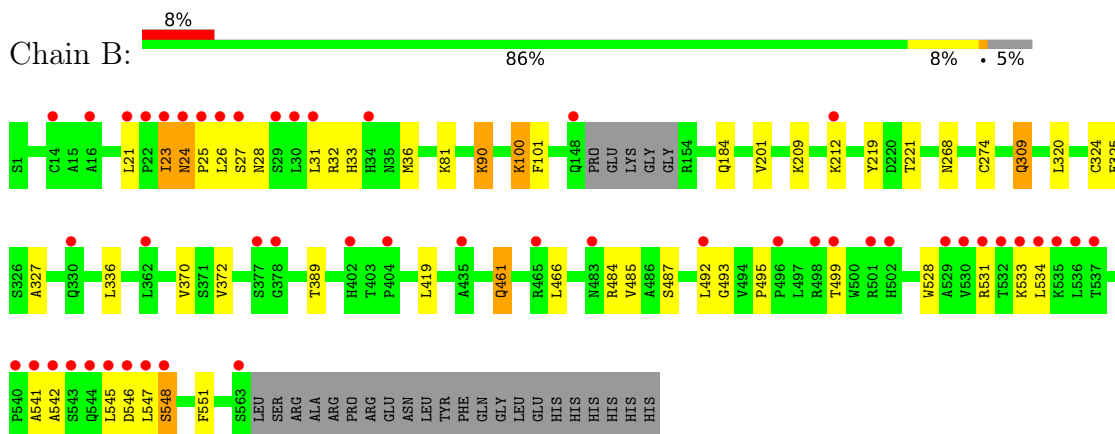
3 Residue-property plots [i](#)

These plots are drawn for all protein, RNA, DNA and oligosaccharide chains in the entry. The first graphic for a chain summarises the proportions of the various outlier classes displayed in the second graphic. The second graphic shows the sequence view annotated by issues in geometry and electron density. Residues are color-coded according to the number of geometric quality criteria for which they contain at least one outlier: green = 0, yellow = 1, orange = 2 and red = 3 or more. A red dot above a residue indicates a poor fit to the electron density ($RSRZ > 2$). Stretches of 2 or more consecutive residues without any outlier are shown as a green connector. Residues present in the sample, but not in the model, are shown in grey.

- Molecule 1: RNA-DIRECTED RNA POLYMERASE



- Molecule 1: RNA-DIRECTED RNA POLYMERASE



4 Data and refinement statistics

Property	Value	Source
Space group	P 21 21 21	Depositor
Cell constants a, b, c, α , β , γ	90.27Å 106.23Å 134.55Å 90.00° 90.00° 90.00°	Depositor
Resolution (Å)	19.91 – 1.76 19.91 – 1.76	Depositor EDS
% Data completeness (in resolution range)	96.6 (19.91-1.76) 96.6 (19.91-1.76)	Depositor EDS
R_{merge}	0.04	Depositor
R_{sym}	(Not available)	Depositor
$\langle I/\sigma(I) \rangle$ ¹	3.90 (at 1.76Å)	Xtrriage
Refinement program	BUSTER 2.11.2	Depositor
R, R_{free}	0.177 , 0.209 0.172 , 0.207	Depositor DCC
R_{free} test set	6195 reflections (5.00%)	wwPDB-VP
Wilson B-factor (Å ²)	21.3	Xtrriage
Anisotropy	0.403	Xtrriage
Bulk solvent k_{sol} (e/Å ³), B_{sol} (Å ²)	0.35 , 57.5	EDS
L-test for twinning ²	$\langle L \rangle = 0.51$, $\langle L^2 \rangle = 0.34$	Xtrriage
Estimated twinning fraction	No twinning to report.	Xtrriage
F_o, F_c correlation	0.97	EDS
Total number of atoms	10444	wwPDB-VP
Average B, all atoms (Å ²)	29.0	wwPDB-VP

Xtrriage's analysis on translational NCS is as follows: *The largest off-origin peak in the Patterson function is 3.00% of the height of the origin peak. No significant pseudotranslation is detected.*

¹Intensities estimated from amplitudes.

²Theoretical values of $\langle |L| \rangle$, $\langle L^2 \rangle$ for acentric reflections are 0.5, 0.333 respectively for untwinned datasets, and 0.375, 0.2 for perfectly twinned datasets.

5 Model quality [i](#)

5.1 Standard geometry [i](#)

Bond lengths and bond angles in the following residue types are not validated in this section: 8Y6, PO4

The Z score for a bond length (or angle) is the number of standard deviations the observed value is removed from the expected value. A bond length (or angle) with $|Z| > 5$ is considered an outlier worth inspection. RMSZ is the root-mean-square of all Z scores of the bond lengths (or angles).

Mol	Chain	Bond lengths		Bond angles	
		RMSZ	# Z >5	RMSZ	# Z >5
1	A	0.50	0/4508	0.60	0/6115
1	B	0.47	0/4459	0.63	0/6050
All	All	0.49	0/8967	0.61	0/12165

There are no bond length outliers.

There are no bond angle outliers.

There are no chirality outliers.

There are no planarity outliers.

5.2 Too-close contacts [i](#)

In the following table, the Non-H and H(model) columns list the number of non-hydrogen atoms and hydrogen atoms in the chain respectively. The H(added) column lists the number of hydrogen atoms added and optimized by MolProbity. The Clashes column lists the number of clashes within the asymmetric unit, whereas Symm-Clashes lists symmetry-related clashes.

Mol	Chain	Non-H	H(model)	H(added)	Clashes	Symm-Clashes
1	A	4414	0	4434	18	0
1	B	4365	0	4377	28	0
2	A	36	0	13	1	0
2	B	36	0	13	0	0
3	A	10	0	0	0	0
3	B	10	0	0	0	0
4	A	875	0	0	6	0
4	B	698	0	0	3	0
All	All	10444	0	8837	47	0

The all-atom clashscore is defined as the number of clashes found per 1000 atoms (including hydrogen atoms). The all-atom clashscore for this structure is 3.

All (47) close contacts within the same asymmetric unit are listed below, sorted by their clash magnitude.

Atom-1	Atom-2	Interatomic distance (Å)	Clash overlap (Å)
1:A:32:ARG:NH2	4:A:2101:HOH:O	2.20	0.73
1:B:24:ASN:HD21	1:B:27:SER:HB3	1.55	0.71
1:A:205:VAL:O	1:A:209:LYS:HG2	1.96	0.66
1:B:309:GLN:NE2	1:B:327:ALA:HB2	2.12	0.64
1:B:32:ARG:HD3	1:B:493:GLY:O	1.98	0.63
1:B:531:ARG:HH11	1:B:531:ARG:HG3	1.63	0.63
1:B:461:GLN:HB3	1:B:542:ALA:HA	1.86	0.57
1:B:201:VAL:HG23	1:B:370:VAL:HG22	1.86	0.57
1:B:461:GLN:HG2	1:B:541:ALA:HB3	1.90	0.53
1:B:309:GLN:HG2	1:B:325:GLU:HB3	1.92	0.52
1:B:23:ILE:HD12	1:B:23:ILE:H	1.74	0.52
1:A:83:LEU:HB2	1:A:173:MET:HA	1.91	0.51
1:B:31:LEU:HD11	1:B:492:LEU:HD12	1.92	0.51
1:A:498:ARG:NH1	4:A:2787:HOH:O	2.45	0.49
1:B:531:ARG:HG3	1:B:531:ARG:NH1	2.25	0.49
1:A:445:CYS:SG	1:A:454:ILE:HD12	2.54	0.48
1:B:268:ASN:HB3	1:B:274:CYS:SG	2.54	0.48
1:A:84:SER:OG	1:A:86:GLU:HG2	2.15	0.47
1:B:419:LEU:CD2	1:B:485:VAL:HG11	2.44	0.47
1:A:106:LYS:HD2	4:A:2144:HOH:O	2.14	0.47
1:A:361:GLU:HG2	1:A:370:VAL:O	2.15	0.47
1:B:309:GLN:HE22	1:B:327:ALA:HB2	1.80	0.46
1:B:309:GLN:O	1:B:324:CYS:HB2	2.15	0.46
1:A:488:CYS:HB2	4:A:2683:HOH:O	2.15	0.46
1:B:100:LYS:NZ	4:B:2255:HOH:O	2.47	0.45
1:B:528:TRP:HA	1:B:533:LYS:NZ	2.32	0.45
1:A:544:GLN:H	1:A:544:GLN:HG2	1.59	0.45
1:B:546:ASP:OD1	1:B:548:SER:HB3	2.16	0.45
1:B:466:LEU:HD22	1:B:551:PHE:HE2	1.82	0.45
1:A:359:ASP:HB3	1:A:362:LEU:HG	1.99	0.44
1:B:24:ASN:O	1:B:28:ASN:HB2	2.18	0.43
1:B:389:THR:HG23	1:B:492:LEU:HD21	2.00	0.43
1:A:372:VAL:HG22	1:A:382:TYR:CD1	2.54	0.43
1:A:309:GLN:O	1:A:324:CYS:HB2	2.19	0.42
1:B:32:ARG:NH2	1:B:495:PRO:HG3	2.34	0.42
1:B:100:LYS:HG3	1:B:101:PHE:CD1	2.53	0.42
1:B:221:THR:O	4:B:2426:HOH:O	2.22	0.42
1:B:419:LEU:HD22	1:B:485:VAL:HG21	2.01	0.42
1:A:172:LYS:HE3	1:A:560:ILE:HD13	2.01	0.42
1:B:33:HIS:HB3	1:B:36:MET:HG3	2.02	0.42

Continued on next page...

Continued from previous page...

Atom-1	Atom-2	Interatomic distance (Å)	Clash overlap (Å)
1:A:128:GLU:HG2	4:B:2313:HOH:O	2.20	0.41
1:A:566:ARG:NH2	4:A:2865:HOH:O	2.52	0.41
1:B:219:TYR:HB3	1:B:320:LEU:HD23	2.02	0.41
2:A:1569:8Y6:C10	2:A:1569:8Y6:H2	2.50	0.41
1:B:90:LYS:HB3	1:B:90:LYS:HE2	1.96	0.41
1:A:154:ARG:HD2	4:A:2424:HOH:O	2.20	0.41
1:A:201:VAL:HG23	1:A:370:VAL:HG22	2.02	0.40

There are no symmetry-related clashes.

5.3 Torsion angles [i](#)

5.3.1 Protein backbone [i](#)

In the following table, the Percentiles column shows the percent Ramachandran outliers of the chain as a percentile score with respect to all X-ray entries followed by that with respect to entries of similar resolution.

The Analysed column shows the number of residues for which the backbone conformation was analysed, and the total number of residues.

Mol	Chain	Analysed	Favoured	Allowed	Outliers	Percentiles	
1	A	563/585 (96%)	554 (98%)	9 (2%)	0	100	100
1	B	557/585 (95%)	543 (98%)	13 (2%)	1 (0%)	47	29
All	All	1120/1170 (96%)	1097 (98%)	22 (2%)	1 (0%)	51	33

All (1) Ramachandran outliers are listed below:

Mol	Chain	Res	Type
1	B	25	PRO

5.3.2 Protein sidechains [i](#)

In the following table, the Percentiles column shows the percent sidechain outliers of the chain as a percentile score with respect to all X-ray entries followed by that with respect to entries of similar resolution.

The Analysed column shows the number of residues for which the sidechain conformation was analysed, and the total number of residues.

Mol	Chain	Analysed	Rotameric	Outliers	Percentiles	
1	A	483/498 (97%)	472 (98%)	11 (2%)	50	28
1	B	478/498 (96%)	457 (96%)	21 (4%)	28	8
All	All	961/996 (96%)	929 (97%)	32 (3%)	37	15

All (32) residues with a non-rotameric sidechain are listed below:

Mol	Chain	Res	Type
1	A	56	ARG
1	A	57	LEU
1	A	100	LYS
1	A	184	GLN
1	A	209	LYS
1	A	336	LEU
1	A	377	SER
1	A	535	LYS
1	A	544	GLN
1	A	564	LEU
1	A	568	ARG
1	B	21	LEU
1	B	23	ILE
1	B	24	ASN
1	B	26	LEU
1	B	81	LYS
1	B	90	LYS
1	B	100	LYS
1	B	184	GLN
1	B	209	LYS
1	B	212	LYS
1	B	309	GLN
1	B	336	LEU
1	B	372	VAL
1	B	461	GLN
1	B	484	ARG
1	B	487	SER
1	B	499	THR
1	B	534	LEU
1	B	545	LEU
1	B	547	LEU
1	B	548	SER

Sometimes sidechains can be flipped to improve hydrogen bonding and reduce clashes. There are no such sidechains identified.

5.3.3 RNA [i](#)

There are no RNA molecules in this entry.

5.4 Non-standard residues in protein, DNA, RNA chains [i](#)

There are no non-standard protein/DNA/RNA residues in this entry.

5.5 Carbohydrates [i](#)

There are no monosaccharides in this entry.

5.6 Ligand geometry [i](#)

6 ligands are modelled in this entry.

In the following table, the Counts columns list the number of bonds (or angles) for which Mogul statistics could be retrieved, the number of bonds (or angles) that are observed in the model and the number of bonds (or angles) that are defined in the Chemical Component Dictionary. The Link column lists molecule types, if any, to which the group is linked. The Z score for a bond length (or angle) is the number of standard deviations the observed value is removed from the expected value. A bond length (or angle) with $|Z| > 2$ is considered an outlier worth inspection. RMSZ is the root-mean-square of all Z scores of the bond lengths (or angles).

Mol	Type	Chain	Res	Link	Bond lengths			Bond angles		
					Counts	RMSZ	# Z > 2	Counts	RMSZ	# Z > 2
3	PO4	A	1570	-	4,4,4	2.50	1 (25%)	6,6,6	0.85	0
3	PO4	B	1566	-	4,4,4	2.45	1 (25%)	6,6,6	0.75	0
3	PO4	B	1565	-	4,4,4	2.40	1 (25%)	6,6,6	0.81	0
2	8Y6	A	1569	-	34,41,41	1.42	2 (5%)	41,62,62	1.65	8 (19%)
2	8Y6	B	1564	-	34,41,41	1.52	4 (11%)	41,62,62	1.66	8 (19%)
3	PO4	A	1571	-	4,4,4	2.59	1 (25%)	6,6,6	0.68	0

In the following table, the Chirals column lists the number of chiral outliers, the number of chiral centers analysed, the number of these observed in the model and the number defined in the Chemical Component Dictionary. Similar counts are reported in the Torsion and Rings columns. '-' means no outliers of that kind were identified.

Mol	Type	Chain	Res	Link	Chirals	Torsions	Rings
2	8Y6	B	1564	-	-	6/10/12/12	0/6/6/6
2	8Y6	A	1569	-	-	6/10/12/12	0/6/6/6

All (10) bond length outliers are listed below:

Mol	Chain	Res	Type	Atoms	Z	Observed(Å)	Ideal(Å)
3	A	1571	PO4	P-O1	4.88	1.62	1.50
3	A	1570	PO4	P-O1	4.73	1.62	1.50
2	B	1564	8Y6	C7-C16	4.67	1.53	1.46
3	B	1566	PO4	P-O1	4.61	1.61	1.50
3	B	1565	PO4	P-O1	4.58	1.61	1.50
2	A	1569	8Y6	C7-C16	4.57	1.52	1.46
2	A	1569	8Y6	C11-C7	-3.25	1.44	1.49
2	B	1564	8Y6	C11-C7	-3.16	1.44	1.49
2	B	1564	8Y6	C8-C9	-2.81	1.39	1.42
2	B	1564	8Y6	C5-C6	2.07	1.41	1.37

All (16) bond angle outliers are listed below:

Mol	Chain	Res	Type	Atoms	Z	Observed(°)	Ideal(°)
2	B	1564	8Y6	F2-C12-C22	4.59	120.66	116.90
2	B	1564	8Y6	C13-C12-C22	-3.97	122.02	123.97
2	A	1569	8Y6	C13-C12-C22	-3.76	122.12	123.97
2	A	1569	8Y6	C1-C15-N1	-3.74	107.08	113.26
2	A	1569	8Y6	O1-C14-C10	3.69	126.38	121.30
2	B	1564	8Y6	C1-C15-N1	-3.49	107.49	113.26
2	A	1569	8Y6	F2-C12-C22	3.45	119.73	116.90
2	A	1569	8Y6	C9-C8-C23	-3.39	118.71	123.52
2	B	1564	8Y6	C9-C8-C23	-3.06	119.18	123.52
2	B	1564	8Y6	O1-C14-C10	3.04	125.48	121.30
2	B	1564	8Y6	O2-C16-C7	-2.78	121.76	125.39
2	A	1569	8Y6	O4-C20-N3	2.74	123.65	120.32
2	A	1569	8Y6	O2-C16-C7	-2.55	122.06	125.39
2	B	1564	8Y6	O4-C20-N3	2.32	123.14	120.32
2	B	1564	8Y6	C11-C10-C14	-2.24	127.32	131.12
2	A	1569	8Y6	C11-C10-C14	-2.24	127.32	131.12

There are no chirality outliers.

All (12) torsion outliers are listed below:

Mol	Chain	Res	Type	Atoms
2	A	1569	8Y6	C8-C11-C7-C16
2	A	1569	8Y6	N1-C10-C14-O1
2	A	1569	8Y6	N1-C10-C14-O3
2	A	1569	8Y6	C11-C10-C14-O1
2	A	1569	8Y6	C11-C10-C14-O3
2	B	1564	8Y6	C8-C11-C7-C16

Continued on next page...

Continued from previous page...

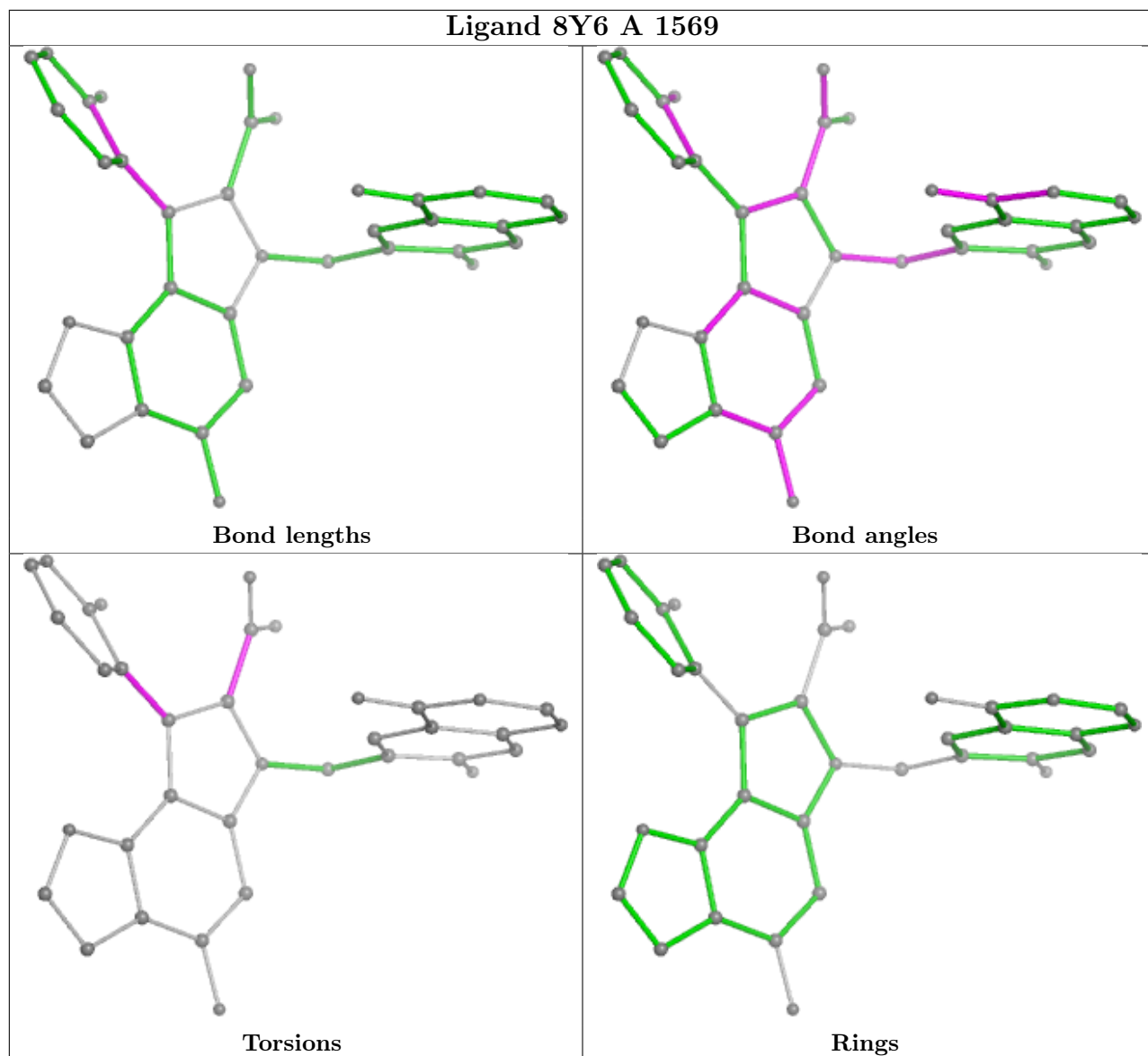
Mol	Chain	Res	Type	Atoms
2	B	1564	8Y6	N1-C10-C14-O1
2	B	1564	8Y6	N1-C10-C14-O3
2	B	1564	8Y6	C11-C10-C14-O1
2	B	1564	8Y6	C11-C10-C14-O3
2	A	1569	8Y6	C10-C11-C7-C16
2	B	1564	8Y6	C10-C11-C7-C16

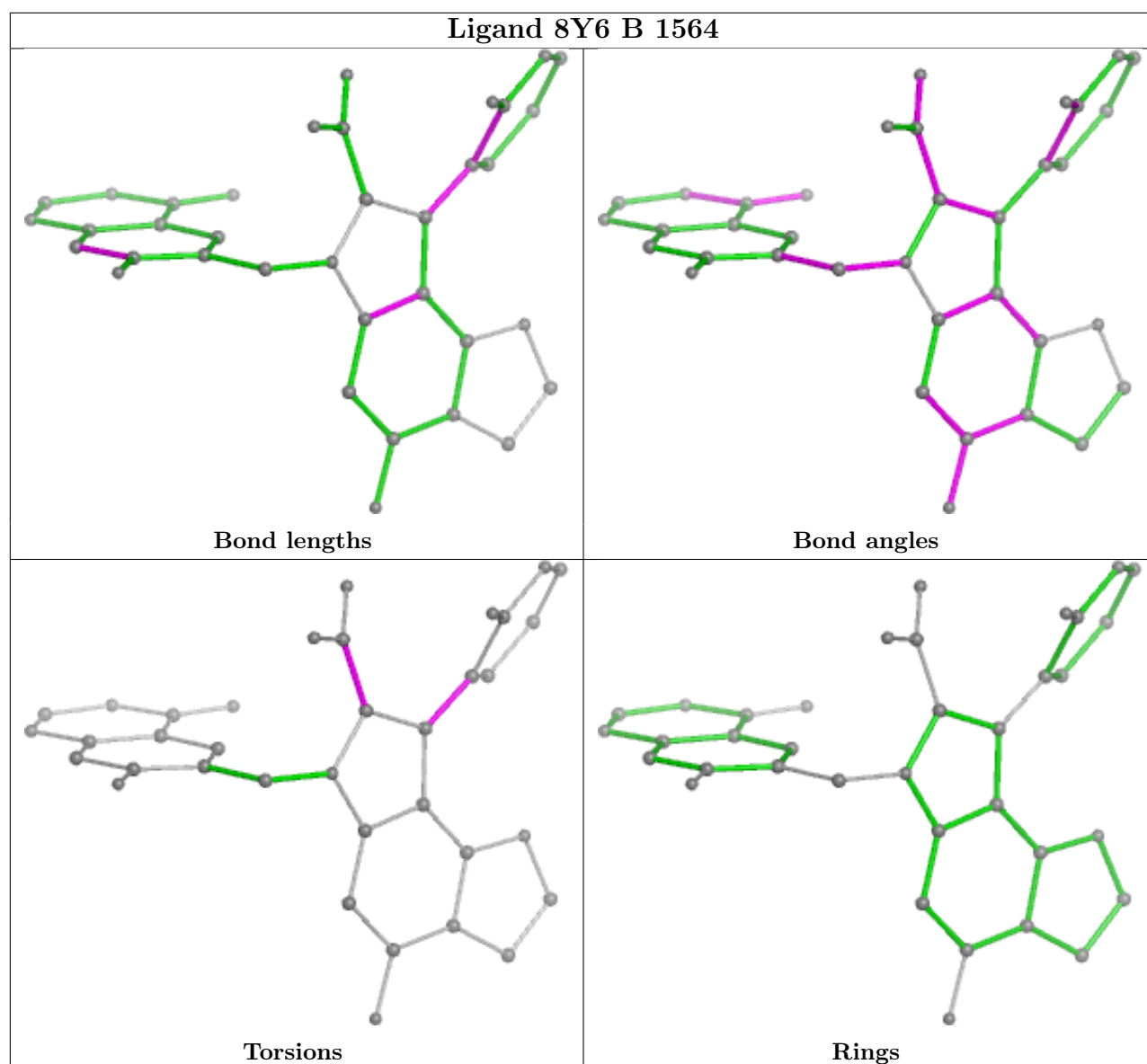
There are no ring outliers.

1 monomer is involved in 1 short contact:

Mol	Chain	Res	Type	Clashes	Symm-Clashes
2	A	1569	8Y6	1	0

The following is a two-dimensional graphical depiction of Mogul quality analysis of bond lengths, bond angles, torsion angles, and ring geometry for all instances of the Ligand of Interest. In addition, ligands with molecular weight > 250 and outliers as shown on the validation Tables will also be included. For torsion angles, if less than 5% of the Mogul distribution of torsion angles is within 10 degrees of the torsion angle in question, then that torsion angle is considered an outlier. Any bond that is central to one or more torsion angles identified as an outlier by Mogul will be highlighted in the graph. For rings, the root-mean-square deviation (RMSD) between the ring in question and similar rings identified by Mogul is calculated over all ring torsion angles. If the average RMSD is greater than 60 degrees and the minimal RMSD between the ring in question and any Mogul-identified rings is also greater than 60 degrees, then that ring is considered an outlier. The outliers are highlighted in purple. The color gray indicates Mogul did not find sufficient equivalents in the CSD to analyse the geometry.





5.7 Other polymers [i](#)

There are no such residues in this entry.

5.8 Polymer linkage issues [i](#)

There are no chain breaks in this entry.

6 Fit of model and data

6.1 Protein, DNA and RNA chains

In the following table, the column labelled ‘#RSRZ > 2’ contains the number (and percentage) of RSRZ outliers, followed by percent RSRZ outliers for the chain as percentile scores relative to all X-ray entries and entries of similar resolution. The OWAB column contains the minimum, median, 95th percentile and maximum values of the occupancy-weighted average B-factor per residue. The column labelled ‘Q < 0.9’ lists the number of (and percentage) of residues with an average occupancy less than 0.9.

Mol	Chain	Analysed	<RSRZ>	#RSRZ>2	OWAB(Å ²)	Q<0.9
1	A	563/585 (96%)	-0.06	19 (3%) 45 51	14, 21, 42, 121	0
1	B	558/585 (95%)	0.34	49 (8%) 10 13	14, 25, 60, 105	0
All	All	1121/1170 (95%)	0.14	68 (6%) 21 26	14, 23, 50, 121	0

All (68) RSRZ outliers are listed below:

Mol	Chain	Res	Type	RSRZ
1	B	26	LEU	18.7
1	B	25	PRO	11.0
1	B	23	ILE	10.4
1	B	545	LEU	8.6
1	B	544	GLN	7.2
1	A	568	ARG	6.9
1	B	531	ARG	6.4
1	A	567	ALA	6.3
1	B	548	SER	6.1
1	B	563	SER	5.4
1	B	535	LYS	5.4
1	B	542	ALA	5.4
1	B	402	HIS	5.1
1	B	24	ASN	4.9
1	A	548	SER	4.8
1	B	14	CYS	4.7
1	B	29	SER	4.7
1	B	530	VAL	4.5
1	A	564	LEU	4.4
1	B	541	ALA	4.4
1	B	16	ALA	4.4
1	B	543	SER	4.2
1	B	30	LEU	4.1
1	B	532	THR	4.0

Continued on next page...

Continued from previous page...

Mol	Chain	Res	Type	RSRZ
1	B	27	SER	3.9
1	B	502	HIS	3.8
1	B	377	SER	3.6
1	A	15	ALA	3.5
1	B	540	PRO	3.5
1	A	546	ASP	3.4
1	B	547	LEU	3.2
1	B	492	LEU	3.2
1	A	212	LYS	3.2
1	B	330	GLN	3.1
1	A	169	VAL	3.1
1	B	534	LEU	3.1
1	B	378	GLY	3.1
1	A	57	LEU	3.0
1	B	536	LEU	3.0
1	B	148	GLN	2.9
1	B	546	ASP	2.9
1	A	402	HIS	2.9
1	B	212	LYS	2.8
1	B	499	THR	2.8
1	B	404	PRO	2.8
1	A	16	ALA	2.8
1	B	533	LYS	2.8
1	B	21	LEU	2.7
1	B	34	HIS	2.7
1	B	435	ALA	2.7
1	A	545	LEU	2.7
1	A	544	GLN	2.6
1	B	22	PRO	2.6
1	A	352	ASP	2.6
1	B	537	THR	2.5
1	A	543	SER	2.4
1	B	498	ARG	2.4
1	A	566	ARG	2.3
1	B	496	PRO	2.2
1	B	483	ASN	2.2
1	B	31	LEU	2.1
1	B	465	ARG	2.1
1	A	547	LEU	2.1
1	B	362	LEU	2.1
1	B	529	ALA	2.1
1	B	501	ARG	2.1

Continued on next page...

Continued from previous page...

Mol	Chain	Res	Type	RSRZ
1	A	14	CYS	2.1
1	A	353	PRO	2.0

6.2 Non-standard residues in protein, DNA, RNA chains [i](#)

There are no non-standard protein/DNA/RNA residues in this entry.

6.3 Carbohydrates [i](#)

There are no monosaccharides in this entry.

6.4 Ligands [i](#)

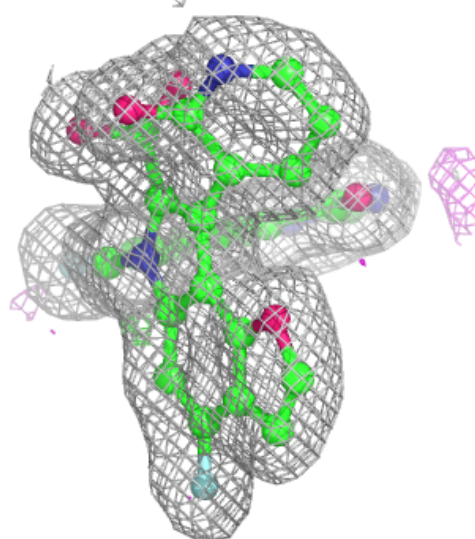
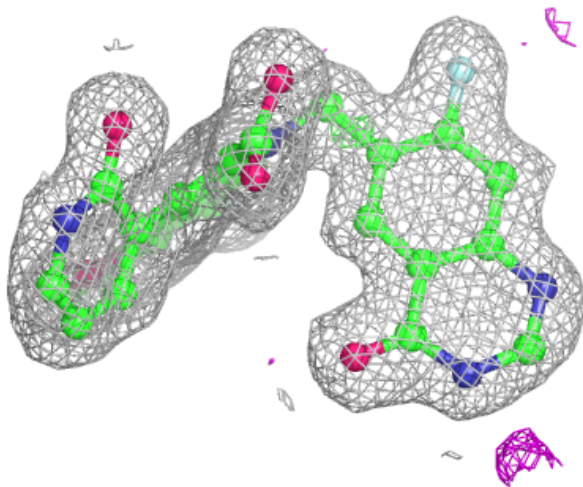
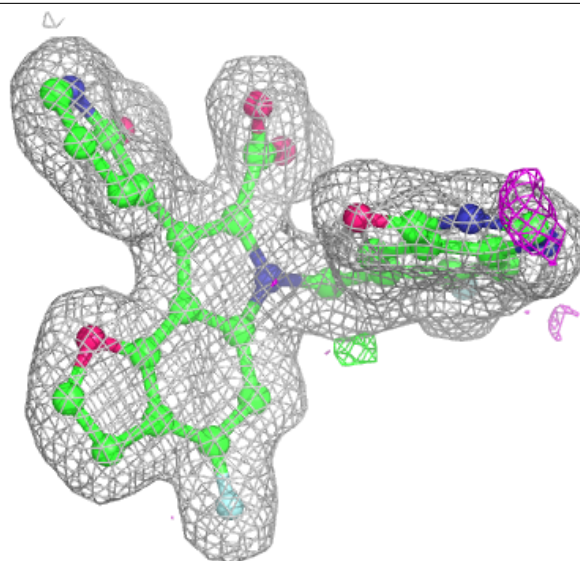
In the following table, the Atoms column lists the number of modelled atoms in the group and the number defined in the chemical component dictionary. The B-factors column lists the minimum, median, 95th percentile and maximum values of B factors of atoms in the group. The column labelled 'Q < 0.9' lists the number of atoms with occupancy less than 0.9.

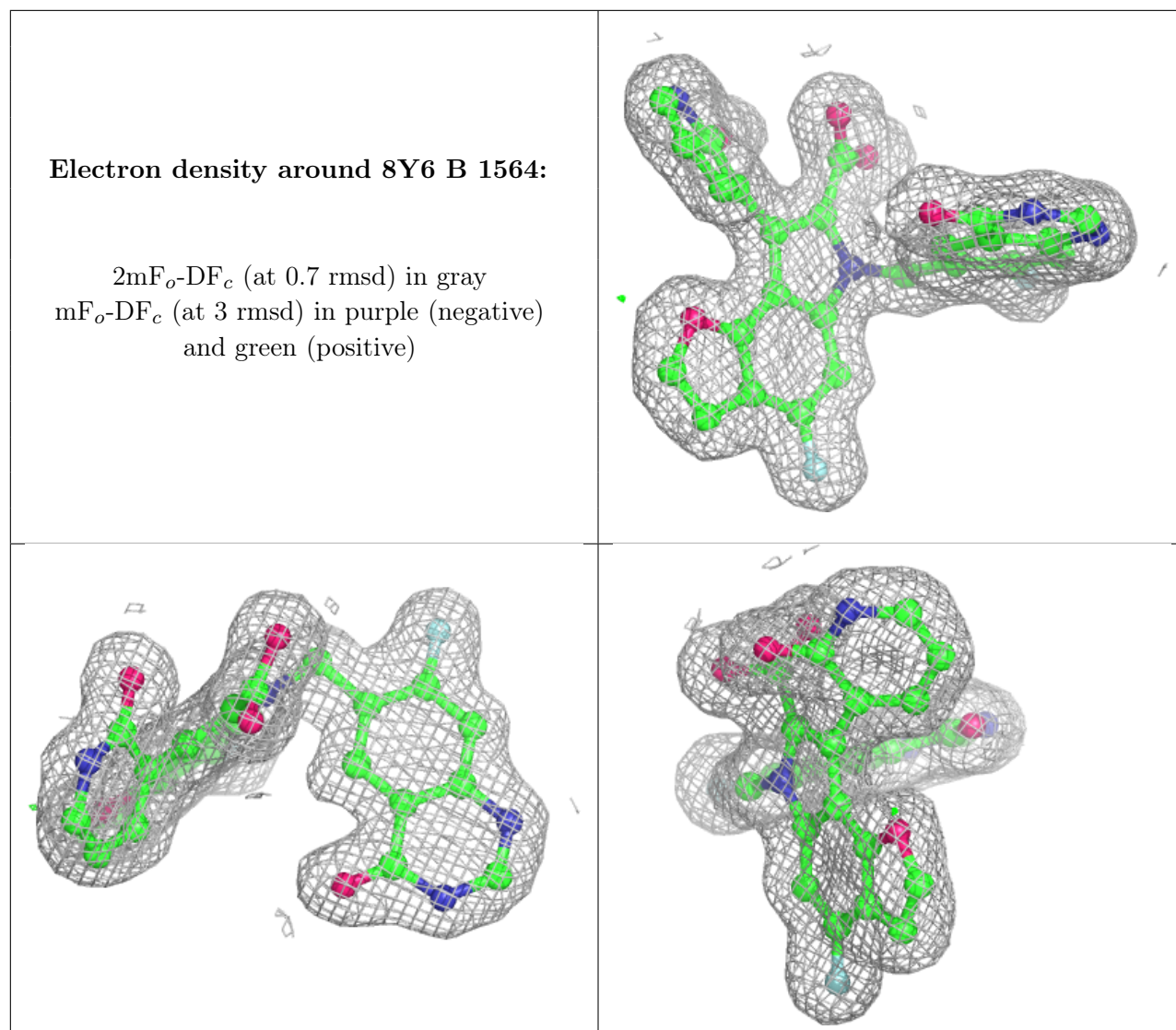
Mol	Type	Chain	Res	Atoms	RSCC	RSR	B-factors(\AA^2)	Q<0.9
3	PO4	B	1566	5/5	0.89	0.19	47,47,49,52	0
3	PO4	A	1570	5/5	0.95	0.15	32,38,40,42	0
2	8Y6	A	1569	36/36	0.96	0.08	13,17,23,24	0
3	PO4	B	1565	5/5	0.96	0.11	35,38,39,43	0
2	8Y6	B	1564	36/36	0.96	0.07	17,20,24,25	0
3	PO4	A	1571	5/5	0.98	0.09	24,25,26,27	0

The following is a graphical depiction of the model fit to experimental electron density of all instances of the Ligand of Interest. In addition, ligands with molecular weight > 250 and outliers as shown on the geometry validation Tables will also be included. Each fit is shown from different orientation to approximate a three-dimensional view.

Electron density around 8Y6 A 1569:

$2mF_o-DF_c$ (at 0.7 rmsd) in gray
 mF_o-DF_c (at 3 rmsd) in purple (negative)
and green (positive)





6.5 Other polymers [i](#)

There are no such residues in this entry.