



Full wwPDB X-ray Structure Validation Report ⓘ

Apr 28, 2024 – 05:31 pm BST

PDB ID : 2YNC
Title : Plasmodium vivax N-myristoyltransferase in complex with YnC12-CoA thioester.
Authors : Wright, M.H.; Clough, B.; Rackham, M.D.; Brannigan, J.A.; Grainger, M.; Bottrill, A.R.; Heal, W.P.; Broncel, M.; Serwa, R.A.; Mann, D.; Leatherbarrow, R.J.; Wilkinson, A.J.; Holder, A.A.; Tate, E.W.
Deposited on : 2012-10-13
Resolution : 1.75 Å(reported)

This is a Full wwPDB X-ray Structure Validation Report for a publicly released PDB entry.

We welcome your comments at validation@mail.wwpdb.org

A user guide is available at

<https://www.wwpdb.org/validation/2017/XrayValidationReportHelp>

with specific help available everywhere you see the ⓘ symbol.

The types of validation reports are described at

<http://www.wwpdb.org/validation/2017/FAQs#types>.

The following versions of software and data (see [references](#) ①) were used in the production of this report:

MolProbity : 4.02b-467
Mogul : 1.8.4, CSD as541be (2020)
Xtrriage (Phenix) : 1.13
EDS : 2.36.2
buster-report : 1.1.7 (2018)
Percentile statistics : 20191225.v01 (using entries in the PDB archive December 25th 2019)
Refmac : 5.8.0158
CCP4 : 7.0.044 (Gargrove)
Ideal geometry (proteins) : Engh & Huber (2001)
Ideal geometry (DNA, RNA) : Parkinson et al. (1996)
Validation Pipeline (wwPDB-VP) : 2.36.2

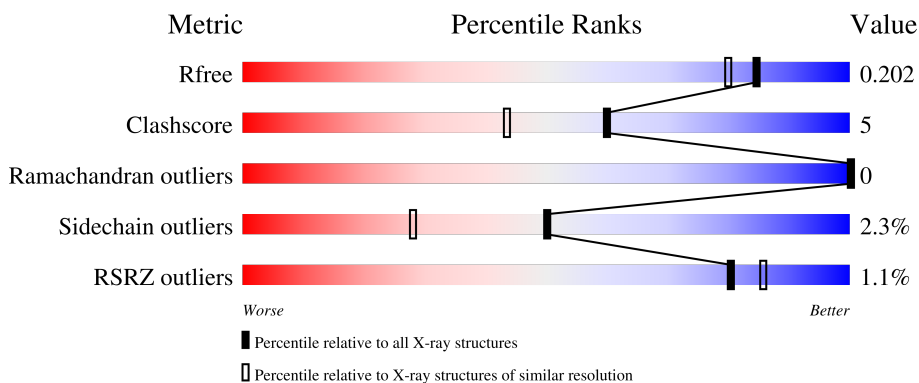
1 Overall quality at a glance i

The following experimental techniques were used to determine the structure:

X-RAY DIFFRACTION

The reported resolution of this entry is 1.75 Å.

Percentile scores (ranging between 0-100) for global validation metrics of the entry are shown in the following graphic. The table shows the number of entries on which the scores are based.



Metric	Whole archive (#Entries)	Similar resolution (#Entries, resolution range(Å))
R_{free}	130704	2340 (1.76-1.76)
Clashscore	141614	2466 (1.76-1.76)
Ramachandran outliers	138981	2437 (1.76-1.76)
Sidechain outliers	138945	2437 (1.76-1.76)
RSRZ outliers	127900	2298 (1.76-1.76)

The table below summarises the geometric issues observed across the polymeric chains and their fit to the electron density. The red, orange, yellow and green segments of the lower bar indicate the fraction of residues that contain outliers for ≥ 3 , 2, 1 and 0 types of geometric quality criteria respectively. A grey segment represents the fraction of residues that are not modelled. The numeric value for each fraction is indicated below the corresponding segment, with a dot representing fractions $\leq 5\%$. The upper red bar (where present) indicates the fraction of residues that have poor fit to the electron density. The numeric value is given above the bar.

Mol	Chain	Length	Quality of chain
1	A	384	<div style="display: flex; align-items: center;"> <div style="width: 2%; height: 10px; background-color: red; margin-right: 5px;"></div> <div style="width: 86%; height: 10px; background-color: green; margin-right: 5px;"></div> <div style="width: 11%; height: 10px; background-color: yellow; margin-right: 5px;"></div> <div style="width: 2%; height: 10px; background-color: orange; margin-right: 5px;"></div> <div style="width: 2%; height: 10px; background-color: grey;"></div> </div> <p style="margin-left: 20px;">86% 11% .</p>
1	B	384	<div style="display: flex; align-items: center;"> <div style="width: 2%; height: 10px; background-color: red; margin-right: 5px;"></div> <div style="width: 89%; height: 10px; background-color: green; margin-right: 5px;"></div> <div style="width: 10%; height: 10px; background-color: yellow; margin-right: 5px;"></div> <div style="width: 2%; height: 10px; background-color: orange; margin-right: 5px;"></div> <div style="width: 2%; height: 10px; background-color: grey;"></div> </div> <p style="margin-left: 20px;">89% 10% .</p>
2	C	384	<div style="display: flex; align-items: center;"> <div style="width: 2%; height: 10px; background-color: red; margin-right: 5px;"></div> <div style="width: 85%; height: 10px; background-color: green; margin-right: 5px;"></div> <div style="width: 9%; height: 10px; background-color: yellow; margin-right: 5px;"></div> <div style="width: 2%; height: 10px; background-color: orange; margin-right: 5px;"></div> <div style="width: 2%; height: 10px; background-color: grey;"></div> </div> <p style="margin-left: 20px;">85% 9% . .</p>

2 Entry composition

There are 8 unique types of molecules in this entry. The entry contains 11267 atoms, of which 0 are hydrogens and 0 are deuteriums.

In the tables below, the ZeroOcc column contains the number of atoms modelled with zero occupancy, the AltConf column contains the number of residues with at least one atom in alternate conformation and the Trace column contains the number of residues modelled with at most 2 atoms.

- Molecule 1 is a protein called GLYCYLPEPTIDE N-TETRADECANOYLTRANSFERASE.

Mol	Chain	Residues	Atoms					ZeroOcc	AltConf	Trace
			Total	C	N	O	S			
1	A	384	3290	2145	532	601	12	0	17	0
1	B	384	3278	2137	529	600	12	0	18	0

- Molecule 2 is a protein called GLYCYLPEPTIDE N-TETRADECANOYLTRANSFERASE.

Mol	Chain	Residues	Atoms					ZeroOcc	AltConf	Trace
			Total	C	N	O	S			
2	C	370	3222	2111	513	587	11	0	25	0

There is a discrepancy between the modelled and reference sequences:

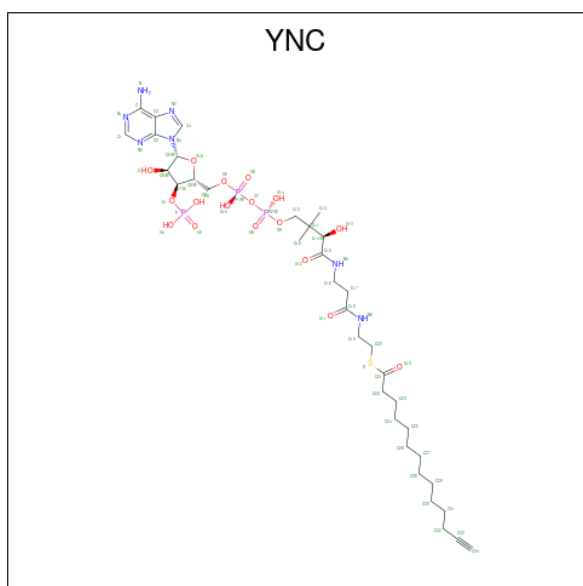
Chain	Residue	Modelled	Actual	Comment	Reference
C	243	LYS	ARG	conflict	UNP A5K1A2

- Molecule 3 is DIMETHYL SULFOXIDE (three-letter code: DMS) (formula: C₂H₆OS).



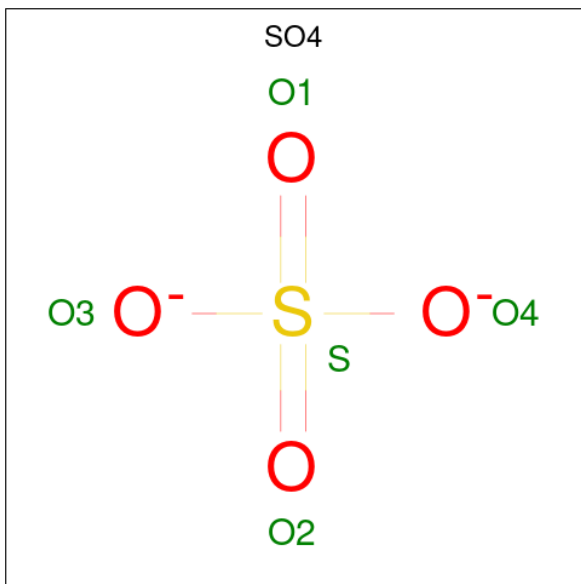
Mol	Chain	Residues	Atoms	ZeroOcc	AltConf
3	A	1	Total C O S 4 2 1 1	0	0
3	B	1	Total C O S 4 2 1 1	0	0
3	C	1	Total C O S 4 2 1 1	0	0

- Molecule 4 is TETRADEC-13-YNOIC ACID - COA THIOESTER (three-letter code: YNC) (formula: $C_{35}H_{58}N_7O_{17}P_3S$).



Mol	Chain	Residues	Atoms					ZeroOcc	AltConf	
			Total	C	N	O	P			S
4	A	1	Total 63	C 35	N 7	O 17	P 3	S 1	0	0
4	B	1	Total 63	C 35	N 7	O 17	P 3	S 1	0	0
4	C	1	Total 63	C 35	N 7	O 17	P 3	S 1	0	0

- Molecule 5 is SULFATE ION (three-letter code: SO4) (formula: O₄S).



Mol	Chain	Residues	Atoms		ZeroOcc	AltConf	
			Total	O S			
5	A	1	Total 5	O 4	S 1	0	0

- Molecule 6 is MAGNESIUM ION (three-letter code: MG) (formula: Mg).

Mol	Chain	Residues	Atoms		ZeroOcc	AltConf
			Total	Mg		
6	A	1	Total 1	Mg 1	0	0
6	B	1	Total 1	Mg 1	0	0
6	C	1	Total 1	Mg 1	0	0

- Molecule 7 is CHLORIDE ION (three-letter code: CL) (formula: Cl).

Mol	Chain	Residues	Atoms	ZeroOcc	AltConf
7	A	2	Total Cl 2 2	0	0
7	B	1	Total Cl 1 1	0	0
7	C	2	Total Cl 2 2	0	0

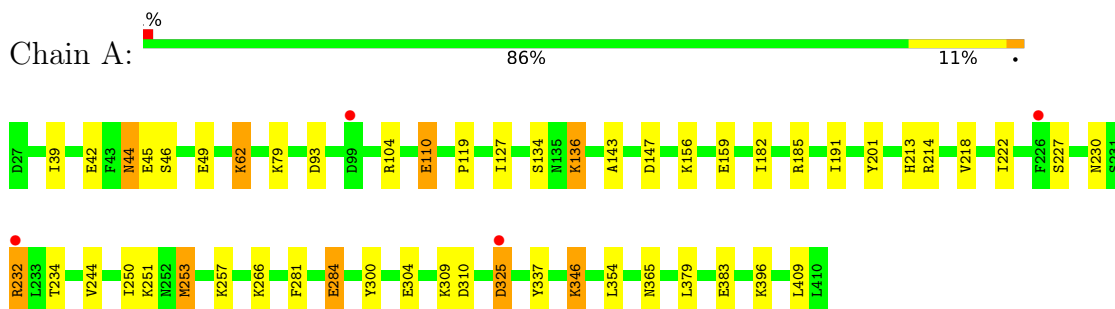
- Molecule 8 is water.

Mol	Chain	Residues	Atoms	ZeroOcc	AltConf
8	A	466	Total O 466 466	0	0
8	B	412	Total O 412 412	0	0
8	C	385	Total O 385 385	0	0

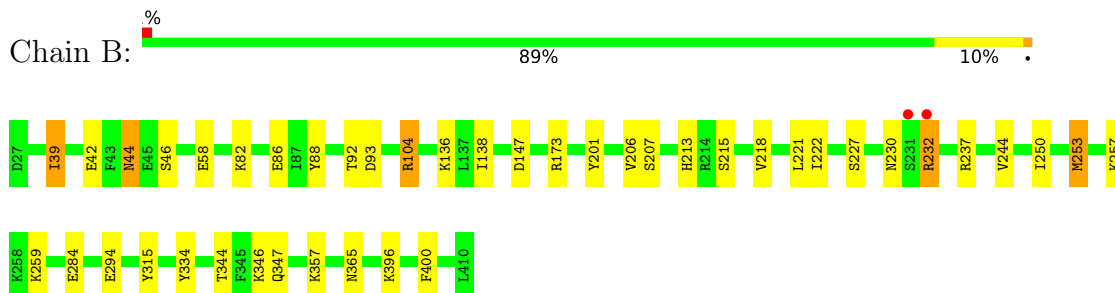
3 Residue-property plots [i](#)

These plots are drawn for all protein, RNA, DNA and oligosaccharide chains in the entry. The first graphic for a chain summarises the proportions of the various outlier classes displayed in the second graphic. The second graphic shows the sequence view annotated by issues in geometry and electron density. Residues are color-coded according to the number of geometric quality criteria for which they contain at least one outlier: green = 0, yellow = 1, orange = 2 and red = 3 or more. A red dot above a residue indicates a poor fit to the electron density ($RSRZ > 2$). Stretches of 2 or more consecutive residues without any outlier are shown as a green connector. Residues present in the sample, but not in the model, are shown in grey.

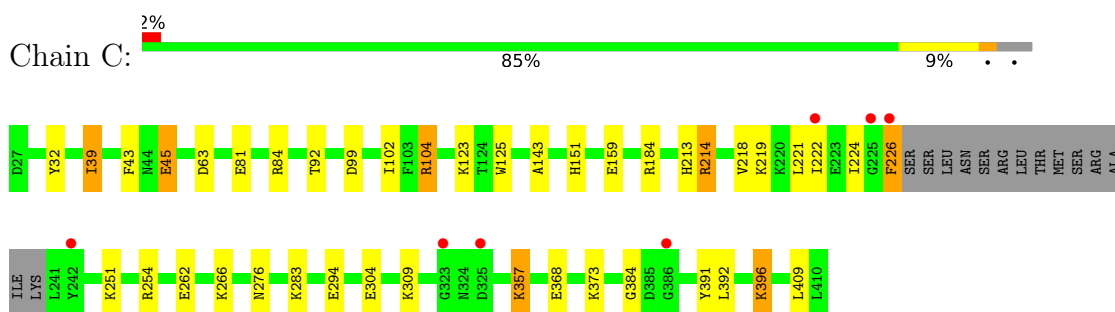
- Molecule 1: GLYCYLPEPTIDE N-TETRADECANOYLTRANSFERASE



- Molecule 1: GLYCYLPEPTIDE N-TETRADECANOYLTRANSFERASE



- Molecule 2: GLYCYLPEPTIDE N-TETRADECANOYLTRANSFERASE



4 Data and refinement statistics

Property	Value	Source
Space group	P 21 21 21	Depositor
Cell constants a, b, c, α , β , γ	57.45Å 119.05Å 176.73Å 90.00° 90.00° 90.00°	Depositor
Resolution (Å)	98.74 – 1.75 98.74 – 1.75	Depositor EDS
% Data completeness (in resolution range)	98.7 (98.74-1.75) 98.0 (98.74-1.75)	Depositor EDS
R_{merge}	0.17	Depositor
R_{sym}	(Not available)	Depositor
$\langle I/\sigma(I) \rangle$ ¹	2.89 (at 1.75Å)	Xtrriage
Refinement program	REFMAC 5.7.0029	Depositor
R, R_{free}	0.159 , 0.203 0.158 , 0.202	Depositor DCC
R_{free} test set	6018 reflections (5.02%)	wwPDB-VP
Wilson B-factor (Å ²)	11.9	Xtrriage
Anisotropy	0.469	Xtrriage
Bulk solvent k_{sol} (e/Å ³), B_{sol} (Å ²)	0.36 , 50.8	EDS
L-test for twinning ²	$\langle L \rangle = 0.48$, $\langle L^2 \rangle = 0.31$	Xtrriage
Estimated twinning fraction	No twinning to report.	Xtrriage
F_o, F_c correlation	0.96	EDS
Total number of atoms	11267	wwPDB-VP
Average B, all atoms (Å ²)	13.0	wwPDB-VP

Xtrriage's analysis on translational NCS is as follows: *The largest off-origin peak in the Patterson function is 4.06% of the height of the origin peak. No significant pseudotranslation is detected.*

¹Intensities estimated from amplitudes.

²Theoretical values of $\langle |L| \rangle$, $\langle L^2 \rangle$ for acentric reflections are 0.5, 0.333 respectively for untwinned datasets, and 0.375, 0.2 for perfectly twinned datasets.

5 Model quality [i](#)

5.1 Standard geometry [i](#)

Bond lengths and bond angles in the following residue types are not validated in this section: SO4, CL, DMS, MG, YNC

The Z score for a bond length (or angle) is the number of standard deviations the observed value is removed from the expected value. A bond length (or angle) with $|Z| > 5$ is considered an outlier worth inspection. RMSZ is the root-mean-square of all Z scores of the bond lengths (or angles).

Mol	Chain	Bond lengths		Bond angles	
		RMSZ	# Z >5	RMSZ	# Z >5
1	A	1.29	9/3408 (0.3%)	1.13	10/4611 (0.2%)
1	B	1.26	6/3404 (0.2%)	1.12	12/4608 (0.3%)
2	C	1.18	4/3368 (0.1%)	1.12	11/4560 (0.2%)
All	All	1.24	19/10180 (0.2%)	1.12	33/13779 (0.2%)

All (19) bond length outliers are listed below:

Mol	Chain	Res	Type	Atoms	Z	Observed(Å)	Ideal(Å)
1	A	284[A]	GLU	CD-OE1	7.59	1.33	1.25
1	A	284[B]	GLU	CD-OE1	7.59	1.33	1.25
1	B	58	GLU	CD-OE1	6.88	1.33	1.25
1	B	42	GLU	CD-OE1	6.78	1.33	1.25
1	B	88	TYR	CG-CD2	6.06	1.47	1.39
1	A	337	TYR	CG-CD1	5.78	1.46	1.39
2	C	63	ASP	CB-CG	5.68	1.63	1.51
2	C	45	GLU	CD-OE1	5.66	1.31	1.25
2	C	391	TYR	CD1-CE1	5.61	1.47	1.39
1	A	383	GLU	CD-OE2	-5.59	1.19	1.25
1	B	334	TYR	CE2-CZ	5.51	1.45	1.38
1	B	315	TYR	CG-CD2	5.45	1.46	1.39
2	C	125	TRP	CZ3-CH2	5.37	1.48	1.40
1	B	207	SER	CB-OG	5.35	1.49	1.42
1	A	110[A]	GLU	CG-CD	5.31	1.59	1.51
1	A	110[B]	GLU	CG-CD	5.31	1.59	1.51
1	A	234	THR	CB-CG2	5.26	1.69	1.52
1	A	337	TYR	CE1-CZ	5.22	1.45	1.38
1	A	300	TYR	CE1-CZ	5.22	1.45	1.38

All (33) bond angle outliers are listed below:

Mol	Chain	Res	Type	Atoms	Z	Observed(°)	Ideal(°)
2	C	104	ARG	NE-CZ-NH1	15.84	128.22	120.30
2	C	104	ARG	NE-CZ-NH2	-12.46	114.07	120.30
1	A	104	ARG	NE-CZ-NH1	8.19	124.40	120.30
1	B	104	ARG	NE-CZ-NH1	7.93	124.26	120.30
1	A	104	ARG	NE-CZ-NH2	-7.78	116.41	120.30
2	C	63	ASP	CB-CG-OD1	7.61	125.15	118.30
1	A	93	ASP	CB-CG-OD1	7.11	124.70	118.30
1	B	44[A]	ASN	CB-CA-C	-6.95	96.51	110.40
1	B	44[B]	ASN	CB-CA-C	-6.95	96.51	110.40
1	B	93	ASP	CB-CG-OD1	6.38	124.04	118.30
1	A	266	LYS	CD-CE-NZ	-6.19	97.46	111.70
1	B	284[B]	GLU	OE1-CD-OE2	-6.05	116.04	123.30
1	B	284[C]	GLU	OE1-CD-OE2	-6.05	116.04	123.30
2	C	254	ARG	NE-CZ-NH1	5.97	123.28	120.30
1	B	237	ARG	NE-CZ-NH2	-5.83	117.39	120.30
1	A	147	ASP	CB-CG-OD1	5.76	123.48	118.30
2	C	84	ARG	NE-CZ-NH1	5.73	123.17	120.30
1	B	237	ARG	NE-CZ-NH1	5.68	123.14	120.30
1	A	79	LYS	CD-CE-NZ	-5.63	98.74	111.70
2	C	219	LYS	CD-CE-NZ	-5.62	98.78	111.70
2	C	409	LEU	CA-CB-CG	5.61	128.20	115.30
1	B	104	ARG	NE-CZ-NH2	-5.53	117.54	120.30
1	A	62[A]	LYS	CD-CE-NZ	5.40	124.12	111.70
1	A	62[B]	LYS	CD-CE-NZ	5.40	124.12	111.70
1	B	147	ASP	CB-CG-OD1	5.39	123.16	118.30
1	B	173	ARG	NE-CZ-NH1	-5.39	117.61	120.30
1	A	310	ASP	CB-CG-OD1	5.34	123.11	118.30
2	C	123	LYS	CD-CE-NZ	-5.32	99.47	111.70
1	A	354	LEU	CB-CG-CD2	-5.19	102.18	111.00
2	C	184	ARG	NE-CZ-NH2	-5.15	117.72	120.30
2	C	357	LYS	CD-CE-NZ	-5.11	99.94	111.70
2	C	392	LEU	CB-CG-CD2	-5.05	102.41	111.00
1	B	396	LYS	N-CA-CB	-5.02	101.56	110.60

There are no chirality outliers.

There are no planarity outliers.

5.2 Too-close contacts

In the following table, the Non-H and H(model) columns list the number of non-hydrogen atoms and hydrogen atoms in the chain respectively. The H(added) column lists the number of hydrogen atoms added and optimized by MolProbity. The Clashes column lists the number of clashes within the asymmetric unit, whereas Symm-Clashes lists symmetry-related clashes.

Mol	Chain	Non-H	H(model)	H(added)	Clashes	Symm-Clashes
1	A	3290	0	3304	34	0
1	B	3278	0	3301	29	0
2	C	3222	0	3238	29	0
3	A	4	0	6	3	0
3	B	4	0	6	1	0
3	C	4	0	6	3	0
4	A	63	0	54	0	0
4	B	63	0	54	0	0
4	C	63	0	54	0	0
5	A	5	0	0	0	0
6	A	1	0	0	0	0
6	B	1	0	0	0	0
6	C	1	0	0	0	0
7	A	2	0	0	0	0
7	B	1	0	0	0	0
7	C	2	0	0	0	0
8	A	466	0	0	2	0
8	B	412	0	0	1	0
8	C	385	0	0	9	0
All	All	11267	0	10023	92	0

The all-atom clashscore is defined as the number of clashes found per 1000 atoms (including hydrogen atoms). The all-atom clashscore for this structure is 5.

All (92) close contacts within the same asymmetric unit are listed below, sorted by their clash magnitude.

Atom-1	Atom-2	Interatomic distance (Å)	Clash overlap (Å)
3:C:999:DMS:C2	8:C:2343:HOH:O	1.99	1.09
1:A:213[A]:HIS:HD2	1:A:365:ASN:OD1	1.46	0.97
3:C:999:DMS:H23	8:C:2343:HOH:O	1.63	0.92
1:B:213[A]:HIS:HD2	1:B:365:ASN:OD1	1.56	0.89
2:C:251[B]:LYS:HB2	2:C:251[B]:LYS:HZ1	1.42	0.85
1:A:213[A]:HIS:CD2	1:A:365:ASN:OD1	2.30	0.85
1:A:230:ASN:OD1	1:A:232:ARG:HG3	1.86	0.76
2:C:251[B]:LYS:CB	2:C:251[B]:LYS:NZ	2.50	0.74
1:A:44:ASN:HD22	1:A:46:SER:H	1.37	0.72
1:A:156[B]:LYS:HE2	1:A:191:ILE:HD11	1.69	0.72
1:A:42:GLU:HG3	1:B:344:THR:HG21	1.74	0.70
1:B:232:ARG:HH11	1:B:232:ARG:HG2	1.55	0.70
1:B:232:ARG:HH11	1:B:232:ARG:CG	2.10	0.65
2:C:251[B]:LYS:HB2	2:C:251[B]:LYS:NZ	2.02	0.65
2:C:262[B]:GLU:HG3	8:C:2285:HOH:O	1.97	0.65

Continued on next page...

Continued from previous page...

Atom-1	Atom-2	Interatomic distance (Å)	Clash overlap (Å)
1:B:232:ARG:HG2	1:B:232:ARG:NH1	2.09	0.64
1:A:284[B]:GLU:H	1:A:284[B]:GLU:CD	2.00	0.64
1:B:215[B]:SER:HB2	1:B:221:LEU:CD1	2.27	0.64
1:A:325:ASP:OD1	1:A:325:ASP:N	2.31	0.63
1:A:127:ILE:HD11	1:A:182[B]:ILE:HD12	1.79	0.63
2:C:32[B]:TYR:OH	2:C:39[B]:ILE:HG22	2.00	0.62
1:A:127:ILE:CD1	1:A:182[B]:ILE:HD12	2.30	0.61
1:B:215[B]:SER:HB2	1:B:221:LEU:HD12	1.81	0.61
1:A:222[A]:ILE:HD13	1:A:227:SER:HB2	1.82	0.60
1:A:42:GLU:CG	1:B:344:THR:HG21	2.31	0.60
2:C:32[B]:TYR:HE2	8:C:2015:HOH:O	1.85	0.59
1:A:42:GLU:OE2	1:B:346[B]:LYS:HG2	2.04	0.57
2:C:32[B]:TYR:CD1	8:C:2004:HOH:O	2.52	0.57
1:A:346[A]:LYS:HD3	1:A:379:LEU:HD21	1.88	0.56
1:B:213[A]:HIS:CD2	1:B:365:ASN:OD1	2.47	0.56
1:B:230[A]:ASN:OD1	1:B:232:ARG:HB2	2.07	0.55
2:C:304[B]:GLU:HG2	8:C:2277:HOH:O	2.05	0.55
2:C:304[A]:GLU:OE2	2:C:309:LYS:NZ	2.37	0.54
1:A:45:GLU:HG3	8:A:2023:HOH:O	2.06	0.54
1:A:42:GLU:OE2	1:B:346[A]:LYS:HE3	2.08	0.54
1:B:244:VAL:CG2	1:B:357[B]:LYS:HD3	2.37	0.54
1:B:346[B]:LYS:HG3	1:B:347:GLN:N	2.22	0.53
2:C:213[A]:HIS:CE1	2:C:384:GLY:HA3	2.44	0.53
1:A:281:PHE:CE1	3:A:999:DMS:H12	2.44	0.53
2:C:92:THR:O	2:C:104:ARG:HD2	2.09	0.52
3:C:999:DMS:H21	8:C:2343:HOH:O	1.80	0.52
2:C:357:LYS:HE2	8:C:2254:HOH:O	2.10	0.52
1:A:304:GLU:OE2	1:A:309:LYS:NZ	2.31	0.51
1:A:44:ASN:ND2	1:A:46:SER:H	2.06	0.51
1:A:127:ILE:HD11	1:A:185:ARG:HD2	1.92	0.51
1:B:244:VAL:HG21	1:B:357[B]:LYS:HD3	1.91	0.51
1:B:44[A]:ASN:HB3	1:B:46:SER:H	1.76	0.51
1:A:281:PHE:HE1	3:A:999:DMS:H12	1.75	0.50
1:A:281:PHE:HE1	3:A:999:DMS:C1	2.24	0.50
2:C:373[B]:LYS:HB2	8:C:2360:HOH:O	2.11	0.49
1:A:218:VAL:O	1:A:222[A]:ILE:HG12	2.13	0.48
2:C:151[A]:HIS:HA	2:C:276[A]:ASN:OD1	2.14	0.47
2:C:266:LYS:HB2	2:C:266:LYS:NZ	2.29	0.47
2:C:262[B]:GLU:HG2	2:C:283:LYS:HE3	1.97	0.47
1:B:218:VAL:O	1:B:222[A]:ILE:HG12	2.14	0.47
1:A:49:GLU:OE2	1:A:396:LYS:HE3	2.16	0.46

Continued on next page...

Continued from previous page...

Atom-1	Atom-2	Interatomic distance (Å)	Clash overlap (Å)
1:A:39:ILE:HD12	1:A:201:TYR:HE2	1.81	0.45
2:C:32[B]:TYR:HH	2:C:39[B]:ILE:HG22	1.80	0.45
1:B:39:ILE:HD11	1:B:201:TYR:CE1	2.51	0.45
3:B:999:DMS:H21	8:B:2173:HOH:O	2.17	0.45
1:B:92:THR:O	1:B:104:ARG:HD2	2.17	0.44
1:A:159:GLU:CD	1:A:409:LEU:HD22	2.38	0.44
2:C:218:VAL:O	2:C:222:ILE:HG12	2.17	0.44
1:B:222[A]:ILE:HD13	1:B:227:SER:HB2	1.99	0.44
2:C:43:PHE:CE1	2:C:396:LYS:HG3	2.53	0.44
1:A:44:ASN:HD22	1:A:44:ASN:C	2.21	0.44
2:C:45:GLU:OE2	2:C:151[A]:HIS:HE1	2.00	0.44
1:A:143:ALA:HA	1:A:159:GLU:O	2.18	0.44
1:A:251[A]:LYS:NZ	1:A:251[A]:LYS:HB3	2.34	0.43
1:A:134:SER:OG	1:A:136:LYS:HB2	2.19	0.43
1:B:39:ILE:HD11	1:B:201:TYR:HE1	1.83	0.43
2:C:214[B]:ARG:HA	2:C:214[B]:ARG:HD2	1.89	0.43
1:A:251[A]:LYS:NZ	1:A:251[A]:LYS:CB	2.82	0.42
1:A:250:ILE:O	1:A:253[B]:MET:HG2	2.20	0.42
1:B:257:LYS:HD2	1:B:259:LYS:HE2	2.00	0.42
1:B:39:ILE:HA	1:B:39:ILE:HD12	1.79	0.42
1:B:206[B]:VAL:HG12	1:B:400:PHE:CE2	2.54	0.42
2:C:251[B]:LYS:CB	2:C:251[B]:LYS:HZ2	2.32	0.42
1:A:62[B]:LYS:HE3	8:A:2058:HOH:O	2.19	0.41
1:B:138:ILE:C	1:B:138:ILE:HD12	2.41	0.41
2:C:32[B]:TYR:OH	2:C:39[B]:ILE:CG2	2.67	0.41
2:C:368:GLU:HB2	2:C:373[B]:LYS:HG2	2.00	0.41
1:B:244:VAL:CG2	1:B:357[A]:LYS:HD2	2.50	0.41
1:A:127:ILE:CD1	1:A:182[B]:ILE:CD1	2.98	0.41
2:C:39[A]:ILE:HD13	2:C:39[A]:ILE:HA	1.72	0.41
2:C:143:ALA:HA	2:C:159:GLU:O	2.21	0.41
1:B:250:ILE:O	1:B:253[B]:MET:HG2	2.21	0.41
2:C:213[A]:HIS:HE1	2:C:384:GLY:HA3	1.85	0.41
2:C:221:LEU:O	2:C:226:PHE:HB3	2.21	0.41
1:B:82:LYS:O	1:B:86[B]:GLU:HG2	2.21	0.40
1:B:244:VAL:HG21	1:B:357[A]:LYS:HD2	2.02	0.40
2:C:224:ILE:HG13	2:C:226:PHE:HB2	2.04	0.40

There are no symmetry-related clashes.

5.3 Torsion angles [i](#)

5.3.1 Protein backbone [i](#)

In the following table, the Percentiles column shows the percent Ramachandran outliers of the chain as a percentile score with respect to all X-ray entries followed by that with respect to entries of similar resolution.

The Analysed column shows the number of residues for which the backbone conformation was analysed, and the total number of residues.

Mol	Chain	Analysed	Favoured	Allowed	Outliers	Percentiles	
1	A	399/384 (104%)	390 (98%)	9 (2%)	0	100	100
1	B	400/384 (104%)	391 (98%)	9 (2%)	0	100	100
2	C	391/384 (102%)	383 (98%)	8 (2%)	0	100	100
All	All	1190/1152 (103%)	1164 (98%)	26 (2%)	0	100	100

There are no Ramachandran outliers to report.

5.3.2 Protein sidechains [i](#)

In the following table, the Percentiles column shows the percent sidechain outliers of the chain as a percentile score with respect to all X-ray entries followed by that with respect to entries of similar resolution.

The Analysed column shows the number of residues for which the sidechain conformation was analysed, and the total number of residues.

Mol	Chain	Analysed	Rotameric	Outliers	Percentiles	
1	A	367/350 (105%)	353 (96%)	14 (4%)	33	11
1	B	368/350 (105%)	362 (98%)	6 (2%)	62	45
2	C	362/350 (103%)	351 (97%)	11 (3%)	41	18
All	All	1097/1050 (104%)	1066 (97%)	31 (3%)	50	20

All (31) residues with a non-rotameric sidechain are listed below:

Mol	Chain	Res	Type
1	A	44	ASN
1	A	110[A]	GLU
1	A	110[B]	GLU
1	A	119	PRO
1	A	136	LYS

Continued on next page...

Continued from previous page...

Mol	Chain	Res	Type
1	A	214	ARG
1	A	232	ARG
1	A	244	VAL
1	A	253[A]	MET
1	A	253[B]	MET
1	A	257	LYS
1	A	325	ASP
1	A	346[A]	LYS
1	A	346[B]	LYS
1	B	39	ILE
1	B	136	LYS
1	B	232	ARG
1	B	253[A]	MET
1	B	253[B]	MET
1	B	294	GLU
2	C	39[A]	ILE
2	C	39[B]	ILE
2	C	81	GLU
2	C	99	ASP
2	C	102	ILE
2	C	214[A]	ARG
2	C	214[B]	ARG
2	C	226	PHE
2	C	294[A]	GLU
2	C	294[B]	GLU
2	C	396	LYS

Sometimes sidechains can be flipped to improve hydrogen bonding and reduce clashes. All (5) such sidechains are listed below:

Mol	Chain	Res	Type
1	A	34	GLN
1	A	44	ASN
1	A	106	ASN
1	B	249	ASN
1	B	360	ASN

5.3.3 RNA

There are no RNA molecules in this entry.

5.4 Non-standard residues in protein, DNA, RNA chains [i](#)

There are no non-standard protein/DNA/RNA residues in this entry.

5.5 Carbohydrates [i](#)

There are no monosaccharides in this entry.

5.6 Ligand geometry [i](#)

Of 15 ligands modelled in this entry, 8 are monoatomic - leaving 7 for Mogul analysis.

In the following table, the Counts columns list the number of bonds (or angles) for which Mogul statistics could be retrieved, the number of bonds (or angles) that are observed in the model and the number of bonds (or angles) that are defined in the Chemical Component Dictionary. The Link column lists molecule types, if any, to which the group is linked. The Z score for a bond length (or angle) is the number of standard deviations the observed value is removed from the expected value. A bond length (or angle) with $|Z| > 2$ is considered an outlier worth inspection. RMSZ is the root-mean-square of all Z scores of the bond lengths (or angles).

Mol	Type	Chain	Res	Link	Bond lengths			Bond angles		
					Counts	RMSZ	# Z > 2	Counts	RMSZ	# Z > 2
4	YNC	B	1000	6	57,65,65	1.66	9 (15%)	68,91,91	2.01	9 (13%)
4	YNC	C	1000	6	57,65,65	1.41	11 (19%)	68,91,91	1.98	13 (19%)
3	DMS	C	999	-	3,3,3	0.94	0	3,3,3	1.57	1 (33%)
3	DMS	A	999	-	3,3,3	0.37	0	3,3,3	0.76	0
4	YNC	A	1000	6	57,65,65	1.44	8 (14%)	68,91,91	1.95	11 (16%)
3	DMS	B	999	-	3,3,3	0.45	0	3,3,3	1.31	0
5	SO4	A	1411	-	4,4,4	0.48	0	6,6,6	1.00	0

In the following table, the Chirals column lists the number of chiral outliers, the number of chiral centers analysed, the number of these observed in the model and the number defined in the Chemical Component Dictionary. Similar counts are reported in the Torsion and Rings columns. '2' means no outliers of that kind were identified.

Mol	Type	Chain	Res	Link	Chirals	Torsions	Rings
4	YNC	A	1000	6	-	0/59/80/80	0/3/3/3
4	YNC	C	1000	6	-	3/59/80/80	0/3/3/3
4	YNC	B	1000	6	-	2/59/80/80	0/3/3/3

All (28) bond length outliers are listed below:

Mol	Chain	Res	Type	Atoms	Z	Observed(Å)	Ideal(Å)
4	B	1000	YNC	C22-C21	5.53	1.56	1.50
4	B	1000	YNC	O10-C21	5.24	1.29	1.21
4	A	1000	YNC	O13-C14	4.16	1.50	1.42
4	A	1000	YNC	P-O1	3.98	1.66	1.59
4	C	1000	YNC	P-O1	3.84	1.66	1.59
4	A	1000	YNC	C1-N2	3.25	1.37	1.32
4	B	1000	YNC	O16-C5	3.15	1.45	1.41
4	B	1000	YNC	C6-C5	-3.14	1.49	1.53
4	B	1000	YNC	C33-C34	2.97	1.27	1.18
4	A	1000	YNC	C1-N1	2.94	1.39	1.33
4	A	1000	YNC	O12-C15	2.80	1.29	1.23
4	B	1000	YNC	C3-C2	2.76	1.48	1.40
4	C	1000	YNC	C33-C34	2.72	1.26	1.18
4	C	1000	YNC	P-O3	2.72	1.59	1.50
4	A	1000	YNC	O10-C21	2.70	1.25	1.21
4	B	1000	YNC	P-O1	2.62	1.64	1.59
4	C	1000	YNC	C22-C21	2.59	1.53	1.50
4	C	1000	YNC	O16-C5	2.59	1.44	1.41
4	B	1000	YNC	O13-C14	2.54	1.47	1.42
4	A	1000	YNC	O16-C5	2.54	1.44	1.41
4	C	1000	YNC	C1-N2	2.54	1.36	1.32
4	B	1000	YNC	C17-C18	2.51	1.56	1.51
4	C	1000	YNC	O13-C14	2.48	1.46	1.42
4	C	1000	YNC	P1-O15	-2.32	1.44	1.55
4	C	1000	YNC	C32-C33	2.19	1.52	1.47
4	C	1000	YNC	C3-C2	2.19	1.46	1.40
4	A	1000	YNC	C4-N3	2.07	1.38	1.34
4	C	1000	YNC	C4-N3	2.06	1.38	1.34

All (34) bond angle outliers are listed below:

Mol	Chain	Res	Type	Atoms	Z	Observed(°)	Ideal(°)
4	B	1000	YNC	O10-C21-C22	-8.85	113.54	123.99
4	B	1000	YNC	C22-C21-S	8.73	123.62	113.46
4	A	1000	YNC	C22-C21-S	8.06	122.84	113.46
4	C	1000	YNC	C22-C21-S	6.87	121.45	113.46
4	C	1000	YNC	O10-C21-C22	-6.47	116.35	123.99
4	C	1000	YNC	N2-C1-N1	-6.07	119.20	128.68
4	A	1000	YNC	C23-C22-C21	-5.42	100.31	112.33
4	A	1000	YNC	O10-C21-C22	-5.00	118.09	123.99
4	A	1000	YNC	N2-C1-N1	-4.96	120.92	128.68
4	A	1000	YNC	C16-N5-C15	-4.22	115.05	122.59
4	B	1000	YNC	C23-C22-C21	-4.20	103.02	112.33

Continued on next page...

Continued from previous page...

Mol	Chain	Res	Type	Atoms	Z	Observed(°)	Ideal(°)
4	C	1000	YNC	C23-C22-C21	-4.05	103.34	112.33
4	A	1000	YNC	C5-N4-C2	-3.90	119.80	126.64
4	C	1000	YNC	C1-N1-C	3.55	124.82	118.75
4	C	1000	YNC	O9-C10-C11	-3.45	105.00	110.55
4	B	1000	YNC	C13-C11-C14	-3.19	103.28	108.82
4	A	1000	YNC	C2-C3-N3	-3.18	106.08	109.40
4	B	1000	YNC	C1-N1-C	3.10	124.06	118.75
4	A	1000	YNC	C12-C11-C14	2.97	113.97	108.82
4	C	1000	YNC	O15-P1-O6	2.95	126.83	112.24
4	B	1000	YNC	C3-C-N	2.82	124.64	120.35
4	B	1000	YNC	N2-C1-N1	-2.79	124.32	128.68
4	A	1000	YNC	O10-C21-S	-2.78	119.01	122.61
4	C	1000	YNC	O11-C18-N6	2.75	128.21	123.01
4	C	1000	YNC	C12-C11-C10	-2.67	103.87	108.23
4	A	1000	YNC	O9-C10-C11	-2.67	106.25	110.55
4	A	1000	YNC	P2-O7-P1	-2.59	123.93	132.83
4	C	1000	YNC	O11-C18-C17	-2.57	117.32	122.02
4	B	1000	YNC	C9-C8-C7	-2.55	105.94	114.40
4	C	1000	YNC	O1-C7-C8	-2.52	100.98	110.08
4	B	1000	YNC	O9-C10-C11	-2.33	106.80	110.55
4	C	1000	YNC	O16-C5-C6	-2.31	103.55	106.93
4	C	1000	YNC	O2-P-O3	2.23	119.41	110.68
3	C	999	DMS	C2-S-C1	2.03	108.89	98.44

There are no chirality outliers.

All (5) torsion outliers are listed below:

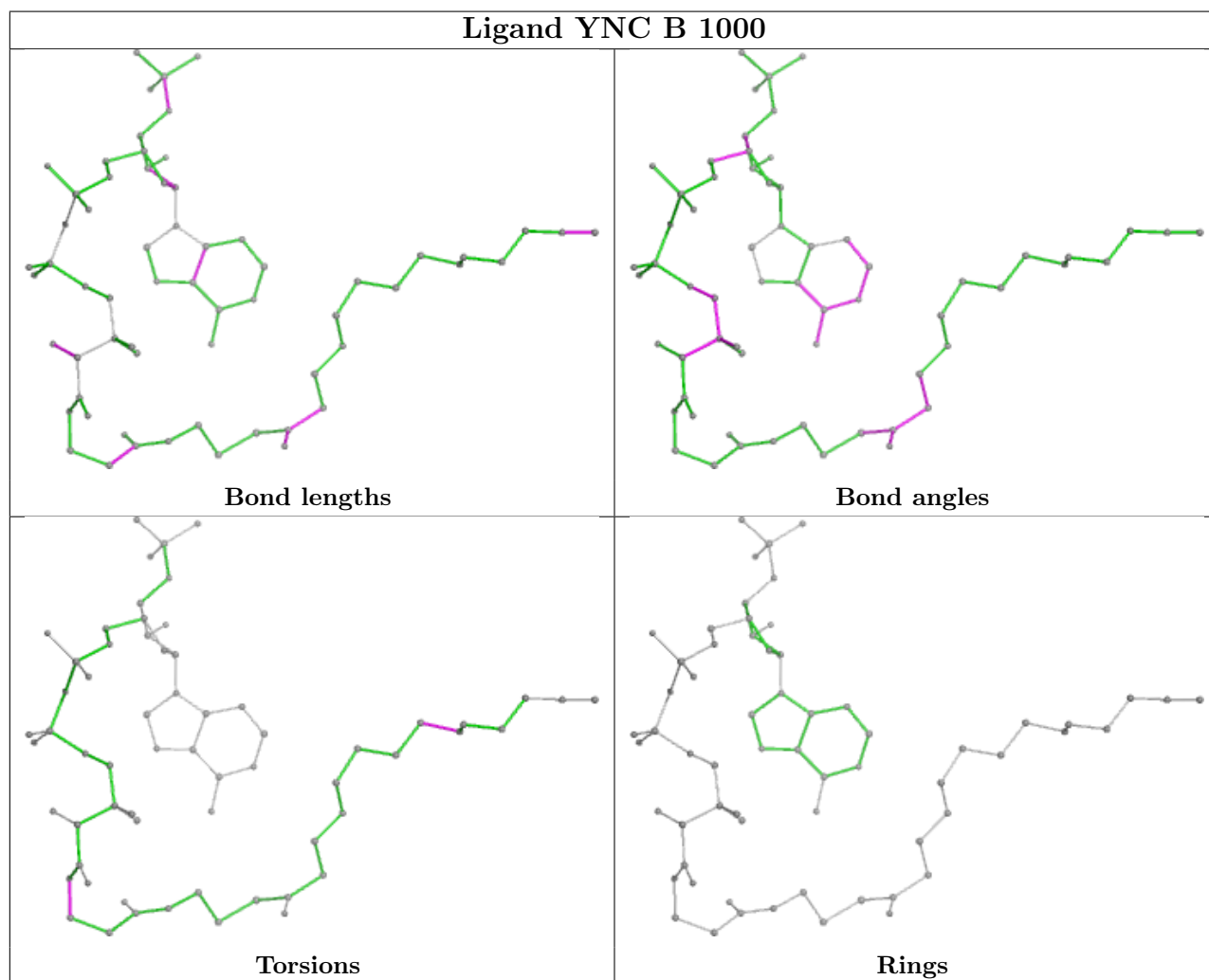
Mol	Chain	Res	Type	Atoms
4	C	1000	YNC	C17-C16-N5-C15
4	B	1000	YNC	C27-C28-C29-C30
4	C	1000	YNC	C24-C25-C26-C27
4	B	1000	YNC	C17-C16-N5-C15
4	C	1000	YNC	P2-O7-P1-O6

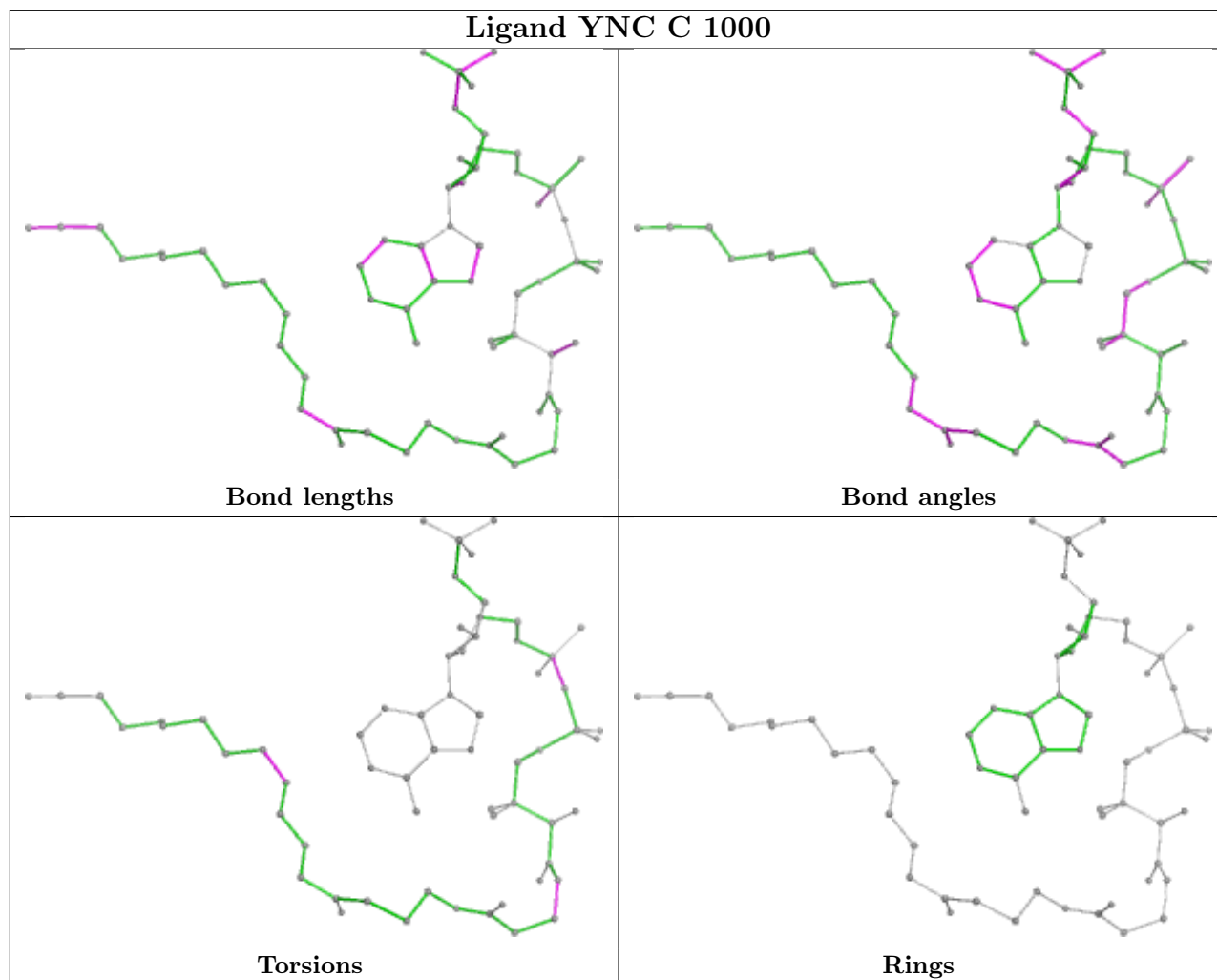
There are no ring outliers.

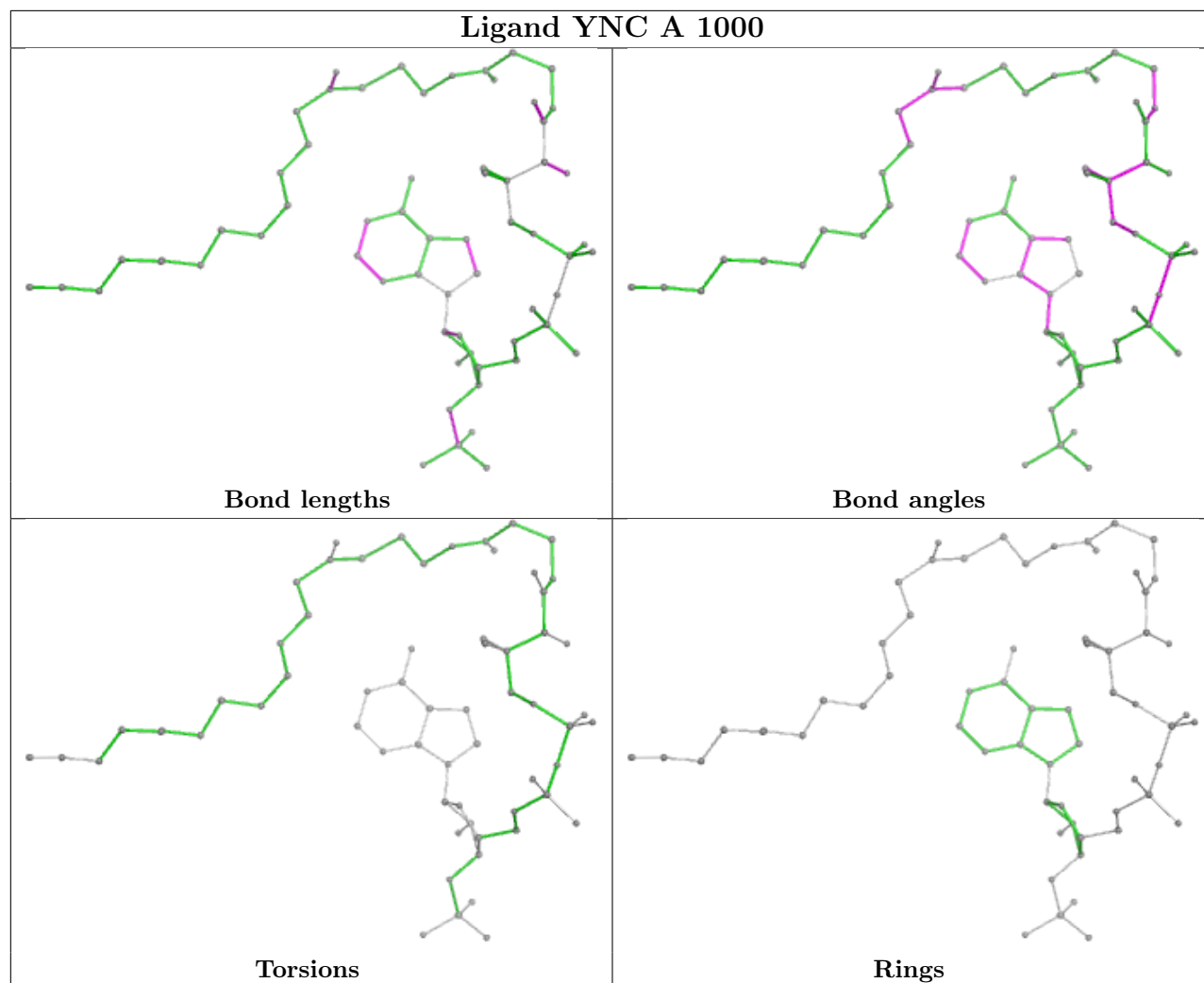
3 monomers are involved in 7 short contacts:

Mol	Chain	Res	Type	Clashes	Symm-Clashes
3	C	999	DMS	3	0
3	A	999	DMS	3	0
3	B	999	DMS	1	0

The following is a two-dimensional graphical depiction of Mogul quality analysis of bond lengths, bond angles, torsion angles, and ring geometry for all instances of the Ligand of Interest. In addition, ligands with molecular weight > 250 and outliers as shown on the validation Tables will also be included. For torsion angles, if less than 5% of the Mogul distribution of torsion angles is within 10 degrees of the torsion angle in question, then that torsion angle is considered an outlier. Any bond that is central to one or more torsion angles identified as an outlier by Mogul will be highlighted in the graph. For rings, the root-mean-square deviation (RMSD) between the ring in question and similar rings identified by Mogul is calculated over all ring torsion angles. If the average RMSD is greater than 60 degrees and the minimal RMSD between the ring in question and any Mogul-identified rings is also greater than 60 degrees, then that ring is considered an outlier. The outliers are highlighted in purple. The color gray indicates Mogul did not find sufficient equivalents in the CSD to analyse the geometry.







5.7 Other polymers [i](#)

There are no such residues in this entry.

5.8 Polymer linkage issues [i](#)

There are no chain breaks in this entry.

6 Fit of model and data [i](#)

6.1 Protein, DNA and RNA chains [i](#)

In the following table, the column labelled '#RSRZ > 2' contains the number (and percentage) of RSRZ outliers, followed by percent RSRZ outliers for the chain as percentile scores relative to all X-ray entries and entries of similar resolution. The OWAB column contains the minimum, median, 95th percentile and maximum values of the occupancy-weighted average B-factor per residue. The column labelled 'Q < 0.9' lists the number of (and percentage) of residues with an average occupancy less than 0.9.

Mol	Chain	Analysed	<RSRZ>	#RSRZ>2	OWAB(Å ²)	Q<0.9
1	A	384/384 (100%)	-0.34	4 (1%) 82 87	4, 10, 26, 55	10 (2%)
1	B	384/384 (100%)	-0.36	2 (0%) 91 93	5, 10, 27, 66	11 (2%)
2	C	370/384 (96%)	-0.31	7 (1%) 66 74	5, 11, 29, 52	10 (2%)
All	All	1138/1152 (98%)	-0.34	13 (1%) 80 86	4, 10, 28, 66	31 (2%)

All (13) RSRZ outliers are listed below:

Mol	Chain	Res	Type	RSRZ
2	C	226	PHE	6.6
1	B	232	ARG	4.1
1	A	325	ASP	4.1
1	A	232	ARG	3.4
2	C	225	GLY	3.3
2	C	222	ILE	3.2
2	C	323	GLY	2.9
1	B	231	SER	2.5
2	C	325	ASP	2.3
1	A	99	ASP	2.2
2	C	242	TYR	2.1
1	A	226	PHE	2.1
2	C	386	GLY	2.1

6.2 Non-standard residues in protein, DNA, RNA chains [i](#)

There are no non-standard protein/DNA/RNA residues in this entry.

6.3 Carbohydrates [i](#)

There are no monosaccharides in this entry.

6.4 Ligands

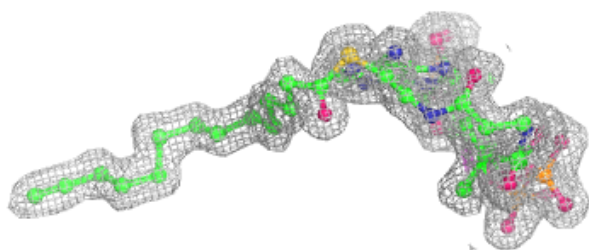
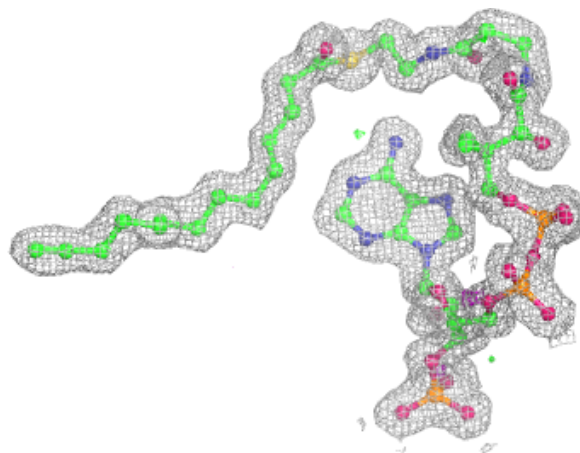
In the following table, the Atoms column lists the number of modelled atoms in the group and the number defined in the chemical component dictionary. The B-factors column lists the minimum, median, 95th percentile and maximum values of B factors of atoms in the group. The column labelled 'Q< 0.9' lists the number of atoms with occupancy less than 0.9.

Mol	Type	Chain	Res	Atoms	RSCC	RSR	B-factors(Å ²)	Q<0.9
3	DMS	A	999	4/4	0.83	0.17	23,28,30,37	0
3	DMS	C	999	4/4	0.85	0.19	27,27,30,38	0
3	DMS	B	999	4/4	0.92	0.15	25,29,29,32	0
7	CL	C	1500	1/1	0.95	0.06	34,34,34,34	0
5	SO4	A	1411	5/5	0.97	0.10	27,28,36,37	0
7	CL	A	1500	1/1	0.97	0.05	31,31,31,31	0
4	YNC	C	1000	63/63	0.97	0.07	6,10,13,17	0
4	YNC	A	1000	63/63	0.98	0.07	6,9,11,14	0
4	YNC	B	1000	63/63	0.98	0.07	6,10,13,15	0
6	MG	B	1411	1/1	0.99	0.06	20,20,20,20	0
6	MG	C	1411	1/1	0.99	0.06	19,19,19,19	0
6	MG	A	1412	1/1	1.00	0.07	19,19,19,19	0
7	CL	B	1412	1/1	1.00	0.07	9,9,9,9	0
7	CL	C	1412	1/1	1.00	0.06	10,10,10,10	0
7	CL	A	1413	1/1	1.00	0.07	9,9,9,9	0

The following is a graphical depiction of the model fit to experimental electron density of all instances of the Ligand of Interest. In addition, ligands with molecular weight > 250 and outliers as shown on the geometry validation Tables will also be included. Each fit is shown from different orientation to approximate a three-dimensional view.

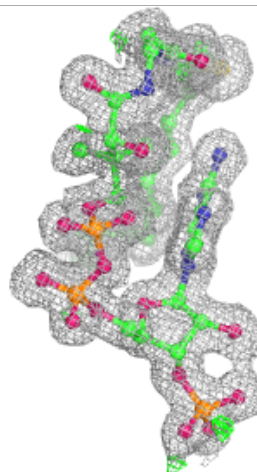
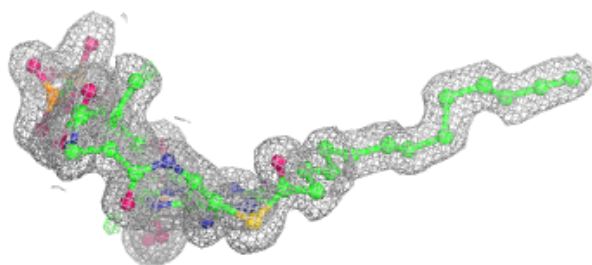
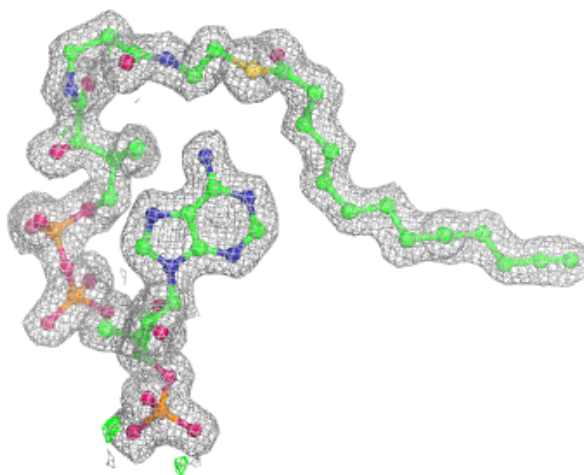
Electron density around YNC C 1000:

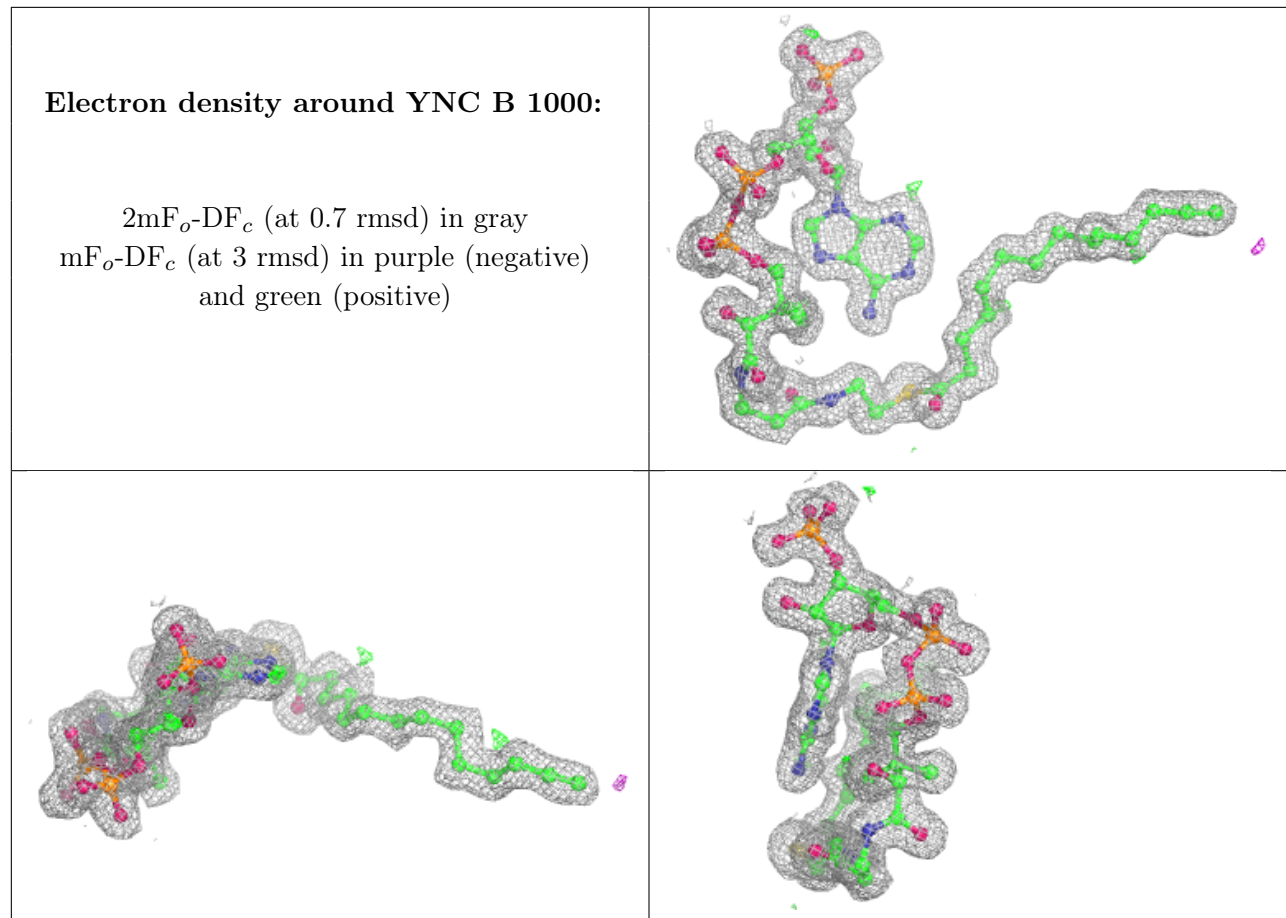
$2mF_o-DF_c$ (at 0.7 rmsd) in gray
 mF_o-DF_c (at 3 rmsd) in purple (negative)
and green (positive)



Electron density around YNC A 1000:

$2mF_o-DF_c$ (at 0.7 rmsd) in gray
 mF_o-DF_c (at 3 rmsd) in purple (negative)
and green (positive)





6.5 Other polymers [i](#)

There are no such residues in this entry.