



Full wwPDB X-ray Structure Validation Report ⓘ

Jun 12, 2024 – 02:17 PM EDT

PDB ID : 2XMY
Title : Discovery and Characterisation of 2-Anilino-4-(thiazol-5-yl) pyrimidine
Transcriptional CDK Inhibitors as Anticancer Agents
Authors : Wang, S.; Griffiths, G.; Midgley, C.A.; Barnett, A.L.; Cooper, M.; Grabarek,
J.; Ingram, L.; Jackson, W.; Kontopidis, G.; McClue, S.J.; McInnes, C.;
McLachlan, J.; Meades, C.; Mezna, M.; Stuart, I.; Thomas, M.P.; Zheleva,
D.I.; Lane, D.P.; Jackson, R.C.; Glover, D.M.; Blake, D.G.; Fischer, P.M.
Deposited on : 2010-07-29
Resolution : 1.90 Å(reported)

This is a Full wwPDB X-ray Structure Validation Report for a publicly released PDB entry.

We welcome your comments at validation@mail.wwpdb.org

A user guide is available at

<https://www.wwpdb.org/validation/2017/XrayValidationReportHelp>

with specific help available everywhere you see the ⓘ symbol.

The types of validation reports are described at

<http://www.wwpdb.org/validation/2017/FAQs#types>.

The following versions of software and data (see [references ⓘ](#)) were used in the production of this report:

MolProbity : 4.02b-467
Mogul : 2022.3.0, CSD as543be (2022)
Xtriage (Phenix) : 1.20.1
EDS : 2.36.2
buster-report : 1.1.7 (2018)
Percentile statistics : 20191225.v01 (using entries in the PDB archive December 25th 2019)
Refmac : 5.8.0158
CCP4 : 7.0.044 (Gargrove)
Ideal geometry (proteins) : Engh & Huber (2001)

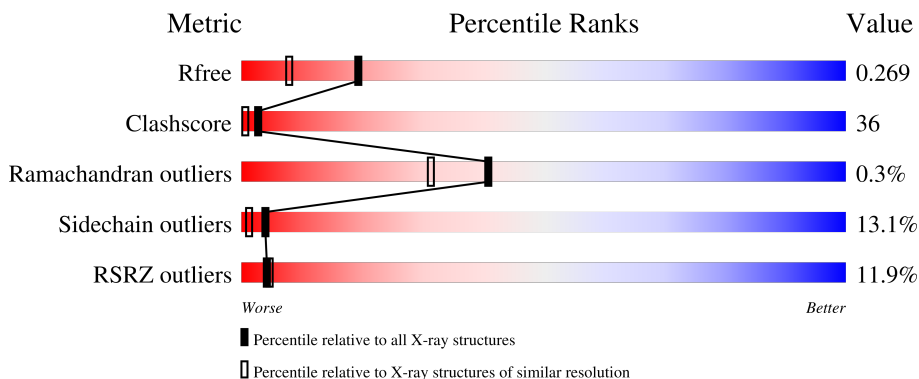
1 Overall quality at a glance

The following experimental techniques were used to determine the structure:

X-RAY DIFFRACTION

The reported resolution of this entry is 1.90 Å.

Percentile scores (ranging between 0-100) for global validation metrics of the entry are shown in the following graphic. The table shows the number of entries on which the scores are based.



Metric	Whole archive (#Entries)	Similar resolution (#Entries, resolution range(Å))
R_{free}	130704	6207 (1.90-1.90)
Clashscore	141614	6847 (1.90-1.90)
Ramachandran outliers	138981	6760 (1.90-1.90)
Sidechain outliers	138945	6760 (1.90-1.90)
RSRZ outliers	127900	6082 (1.90-1.90)

The table below summarises the geometric issues observed across the polymeric chains and their fit to the electron density. The red, orange, yellow and green segments of the lower bar indicate the fraction of residues that contain outliers for ≥ 3 , 2, 1 and 0 types of geometric quality criteria respectively. A grey segment represents the fraction of residues that are not modelled. The numeric value for each fraction is indicated below the corresponding segment, with a dot representing fractions $\leq 5\%$. The upper red bar (where present) indicates the fraction of residues that have poor fit to the electron density. The numeric value is given above the bar.

Mol	Chain	Length	Quality of chain
1	A	298	

The following table lists non-polymeric compounds, carbohydrate monomers and non-standard residues in protein, DNA, RNA chains that are outliers for geometric or electron-density-fit criteria:

Ideal geometry (DNA, RNA) : Parkinson et al. (1996)
 Validation Pipeline (wwPDB-VP) : 2.36.2

Mol	Type	Chain	Res	Chirality	Geometry	Clashes	Electron density
2	CDK	A	500[A]	-	-	X	-
2	CDK	A	500[B]	-	-	X	-

2 Entry composition [i](#)

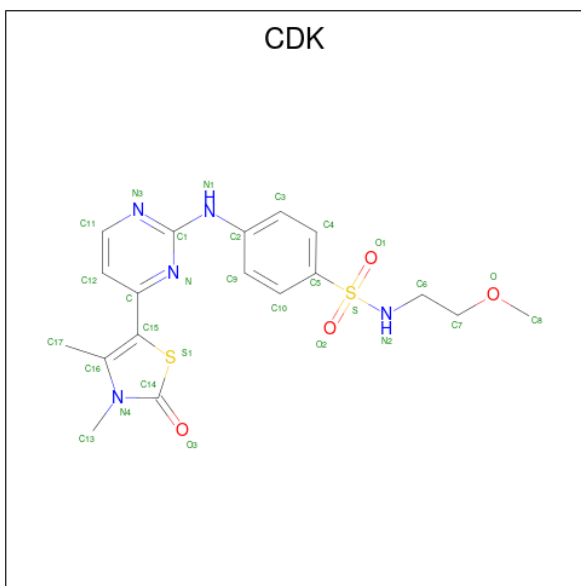
There are 3 unique types of molecules in this entry. The entry contains 2717 atoms, of which 0 are hydrogens and 0 are deuteriums.

In the tables below, the ZeroOcc column contains the number of atoms modelled with zero occupancy, the AltConf column contains the number of residues with at least one atom in alternate conformation and the Trace column contains the number of residues modelled with at most 2 atoms.

- Molecule 1 is a protein called CELL DIVISION PROTEIN KINASE 2.

Mol	Chain	Residues	Atoms					ZeroOcc	AltConf	Trace
			Total	C	N	O	S			
1	A	295	2404	1563	414	417	10	0	6	0

- Molecule 2 is 4-[4-(3,4-DIMETHYL-2-OXO-2,3-DIHYDRO-THIAZOL-5-YL)-PYRIMIDIN-2-YLAMINO]-N-(2-METHOXY-ETHYL)-BENZENESULFONAMIDE (three-letter code: CDK) (formula: C₁₈H₂₁N₅O₄S₂).



Mol	Chain	Residues	Atoms					ZeroOcc	AltConf
			Total	C	N	O	S		
2	A	1	58	36	10	8	4	0	1

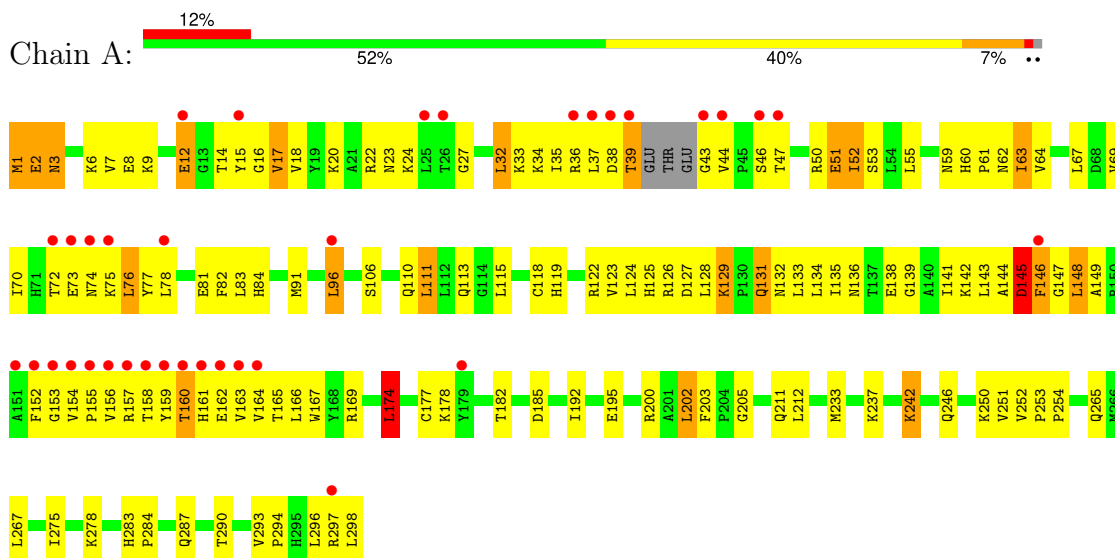
- Molecule 3 is water.

Mol	Chain	Residues	Atoms		ZeroOcc	AltConf
3	A	255	Total	O	0	0
			255	255		

3 Residue-property plots [i](#)

These plots are drawn for all protein, RNA, DNA and oligosaccharide chains in the entry. The first graphic for a chain summarises the proportions of the various outlier classes displayed in the second graphic. The second graphic shows the sequence view annotated by issues in geometry and electron density. Residues are color-coded according to the number of geometric quality criteria for which they contain at least one outlier: green = 0, yellow = 1, orange = 2 and red = 3 or more. A red dot above a residue indicates a poor fit to the electron density ($RSRZ > 2$). Stretches of 2 or more consecutive residues without any outlier are shown as a green connector. Residues present in the sample, but not in the model, are shown in grey.

- Molecule 1: CELL DIVISION PROTEIN KINASE 2



4 Data and refinement statistics i

Property	Value	Source
Space group	P 21 21 21	Depositor
Cell constants a, b, c, α , β , γ	53.12Å 71.50Å 71.64Å 90.00° 90.00° 90.00°	Depositor
Resolution (Å)	40.64 – 1.90 21.78 – 1.90	Depositor EDS
% Data completeness (in resolution range)	97.8 (40.64-1.90) 97.9 (21.78-1.90)	Depositor EDS
R_{merge}	0.08	Depositor
R_{sym}	(Not available)	Depositor
$\langle I/\sigma(I) \rangle$ ¹	2.08 (at 1.90Å)	Xtrriage
Refinement program	REFMAC 5.5.0109	Depositor
R, R_{free}	0.189 , 0.271 0.199 , 0.269	Depositor DCC
R_{free} test set	897 reflections (4.15%)	wwPDB-VP
Wilson B-factor (Å ²)	32.9	Xtrriage
Anisotropy	0.357	Xtrriage
Bulk solvent k_{sol} (e/Å ³), B_{sol} (Å ²)	0.35 , 60.3	EDS
L-test for twinning ²	$\langle L \rangle = 0.50$, $\langle L^2 \rangle = 0.33$	Xtrriage
Estimated twinning fraction	0.003 for -h,l,k	Xtrriage
F_o, F_c correlation	0.96	EDS
Total number of atoms	2717	wwPDB-VP
Average B, all atoms (Å ²)	52.0	wwPDB-VP

Xtrriage's analysis on translational NCS is as follows: *The largest off-origin peak in the Patterson function is 6.51% of the height of the origin peak. No significant pseudotranslation is detected.*

¹Intensities estimated from amplitudes.

²Theoretical values of $\langle |L| \rangle$, $\langle L^2 \rangle$ for acentric reflections are 0.5, 0.333 respectively for untwinned datasets, and 0.375, 0.2 for perfectly twinned datasets.

5 Model quality [i](#)

5.1 Standard geometry [i](#)

Bond lengths and bond angles in the following residue types are not validated in this section: CDK

The Z score for a bond length (or angle) is the number of standard deviations the observed value is removed from the expected value. A bond length (or angle) with $|Z| > 5$ is considered an outlier worth inspection. RMSZ is the root-mean-square of all Z scores of the bond lengths (or angles).

Mol	Chain	Bond lengths		Bond angles	
		RMSZ	# $ Z > 5$	RMSZ	# $ Z > 5$
1	A	0.62	0/2486	0.80	1/3370 (0.0%)

Chiral center outliers are detected by calculating the chiral volume of a chiral center and verifying if the center is modelled as a planar moiety or with the opposite hand. A planarity outlier is detected by checking planarity of atoms in a peptide group, atoms in a mainchain group or atoms of a sidechain that are expected to be planar.

Mol	Chain	#Chirality outliers	#Planarity outliers
1	A	0	3

There are no bond length outliers.

All (1) bond angle outliers are listed below:

Mol	Chain	Res	Type	Atoms	Z	Observed($^{\circ}$)	Ideal($^{\circ}$)
1	A	174	LEU	CA-CB-CG	5.21	127.27	115.30

There are no chirality outliers.

All (3) planarity outliers are listed below:

Mol	Chain	Res	Type	Group
1	A	145	ASP	Peptide
1	A	152	PHE	Peptide
1	A	24	LYS	Peptide

5.2 Too-close contacts [i](#)

In the following table, the Non-H and H(model) columns list the number of non-hydrogen atoms and hydrogen atoms in the chain respectively. The H(added) column lists the number of hydrogen atoms added and optimized by MolProbity. The Clashes column lists the number of clashes within

the asymmetric unit, whereas Symm-Clashes lists symmetry-related clashes.

Mol	Chain	Non-H	H(model)	H(added)	Clashes	Symm-Clashes
1	A	2404	0	2471	164	0
2	A	58	0	42	28	0
3	A	255	0	0	45	0
All	All	2717	0	2513	178	0

The all-atom clashscore is defined as the number of clashes found per 1000 atoms (including hydrogen atoms). The all-atom clashscore for this structure is 36.

All (178) close contacts within the same asymmetric unit are listed below, sorted by their clash magnitude.

Atom-1	Atom-2	Interatomic distance (Å)	Clash overlap (Å)
1:A:9:LYS:NZ	1:A:12:GLU:OE1	1.85	1.07
1:A:158:THR:HG23	1:A:160:THR:HG23	1.34	1.06
1:A:22[B]:ARG:HH11	1:A:22[B]:ARG:HG3	1.16	1.05
2:A:500[B]:CDK:H171	2:A:500[B]:CDK:H12	1.11	1.05
1:A:158:THR:CG2	1:A:160:THR:HG23	1.91	1.00
1:A:124:LEU:CD2	1:A:182:THR:HG22	1.95	0.96
1:A:169[B]:ARG:NH1	3:A:2141:HOH:O	1.95	0.94
2:A:500[B]:CDK:H171	2:A:500[B]:CDK:C12	2.01	0.91
1:A:163:VAL:HG22	3:A:2133:HOH:O	1.73	0.89
1:A:51:GLU:HG3	3:A:2127:HOH:O	1.72	0.88
2:A:500[B]:CDK:H12	2:A:500[B]:CDK:C17	2.02	0.88
1:A:124:LEU:HD21	1:A:182:THR:HG22	1.58	0.85
1:A:60:HIS:HD2	1:A:62:ASN:H	1.23	0.85
1:A:293:VAL:HB	3:A:2118:HOH:O	1.76	0.85
1:A:124:LEU:HD21	1:A:182:THR:CG2	2.10	0.82
1:A:177:CYS:HB2	1:A:233:MET:CE	2.10	0.81
1:A:156:VAL:HG13	3:A:2048:HOH:O	1.79	0.81
1:A:22[B]:ARG:HH11	1:A:22[B]:ARG:CG	1.95	0.80
1:A:157:ARG:HG3	3:A:2130:HOH:O	1.80	0.80
1:A:164:VAL:CG2	3:A:2010:HOH:O	2.30	0.80
1:A:60:HIS:CD2	1:A:62:ASN:H	1.99	0.79
1:A:14:THR:HG21	1:A:154:VAL:HG13	1.64	0.78
1:A:118[A]:CYS:SG	1:A:146:PHE:CZ	2.77	0.77
1:A:157:ARG:HD2	1:A:161:HIS:HA	1.65	0.77
1:A:251:VAL:HG12	1:A:252:VAL:HG13	1.66	0.77
1:A:127:ASP:OD2	1:A:169[B]:ARG:NH1	2.18	0.77
1:A:253:PRO:HA	3:A:2213:HOH:O	1.83	0.77
1:A:164:VAL:HG22	3:A:2010:HOH:O	1.85	0.76
1:A:125:HIS:HE1	1:A:144:ALA:O	1.69	0.76

Continued on next page...

Continued from previous page...

Atom-1	Atom-2	Interatomic distance (Å)	Clash overlap (Å)
1:A:43:GLY:HA2	3:A:2029:HOH:O	1.86	0.75
1:A:298:LEU:O	3:A:2252:HOH:O	2.05	0.75
1:A:164:VAL:HG11	3:A:2142:HOH:O	1.86	0.75
1:A:145:ASP:OD1	2:A:500[B]:CDK:H133	1.87	0.74
1:A:22[B]:ARG:NH1	1:A:27:GLY:O	2.16	0.74
1:A:145:ASP:OD1	2:A:500[B]:CDK:C13	2.35	0.74
1:A:158:THR:CG2	1:A:160:THR:CG2	2.67	0.73
1:A:70:ILE:HG22	3:A:2059:HOH:O	1.89	0.73
1:A:158:THR:HG23	1:A:160:THR:CG2	2.17	0.72
1:A:72:THR:HG22	3:A:2061:HOH:O	1.90	0.71
2:A:500[A]:CDK:H12	2:A:500[A]:CDK:H171	1.72	0.71
1:A:165:THR:HG22	1:A:167:TRP:H	1.56	0.71
1:A:132[A]:ASN:ND2	3:A:2115:HOH:O	2.23	0.70
1:A:32:LEU:HD11	3:A:2001:HOH:O	1.90	0.69
1:A:64:VAL:HG21	1:A:134:LEU:HD12	1.74	0.69
1:A:145:ASP:CG	2:A:500[B]:CDK:H133	2.12	0.69
1:A:254:PRO:HA	3:A:2213:HOH:O	1.93	0.68
2:A:500[A]:CDK:H171	2:A:500[A]:CDK:C12	2.24	0.67
1:A:63:ILE:CD1	1:A:143:LEU:HD12	2.24	0.66
1:A:237:LYS:NZ	3:A:2194:HOH:O	2.30	0.65
1:A:46:SER:O	1:A:50:ARG:HG3	1.96	0.64
2:A:500[A]:CDK:H71C	3:A:2254:HOH:O	1.97	0.64
1:A:119:HIS:HD2	3:A:2228:HOH:O	1.80	0.64
1:A:39:THR:HG1	1:A:43:GLY:N	1.97	0.63
1:A:115:LEU:HD12	1:A:143:LEU:HD11	1.80	0.63
1:A:1:MET:CG	1:A:2:GLU:H	2.11	0.63
1:A:145:ASP:OD1	2:A:500[A]:CDK:H131	1.98	0.63
1:A:37:LEU:HG	1:A:44:VAL:HG22	1.79	0.62
1:A:124:LEU:HD23	1:A:182:THR:HG22	1.81	0.62
2:A:500[B]:CDK:H3	2:A:500[B]:CDK:N	2.14	0.62
2:A:500[B]:CDK:H81C	3:A:2255:HOH:O	1.99	0.62
1:A:6:LYS:HE2	1:A:34:LYS:CE	2.30	0.62
1:A:34:LYS:HG2	1:A:77:TYR:CE1	2.35	0.62
1:A:145:ASP:OD1	2:A:500[A]:CDK:C13	2.46	0.62
1:A:125:HIS:HD2	1:A:127:ASP:H	1.48	0.61
1:A:60:HIS:CG	1:A:61:PRO:HD2	2.36	0.61
1:A:53:SER:OG	3:A:2033:HOH:O	2.16	0.60
1:A:158:THR:HG21	1:A:160:THR:HG23	1.80	0.60
1:A:60:HIS:CD2	1:A:61:PRO:HD2	2.37	0.60
1:A:37:LEU:HD11	1:A:44:VAL:HG13	1.85	0.59
1:A:52:ILE:HG22	1:A:69:VAL:HG21	1.84	0.59

Continued on next page...

Continued from previous page...

Atom-1	Atom-2	Interatomic distance (Å)	Clash overlap (Å)
1:A:1:MET:O	1:A:2:GLU:HB2	2.01	0.59
1:A:33:LYS:HE3	3:A:2022:HOH:O	2.02	0.59
1:A:124:LEU:HD22	1:A:182:THR:HA	1.84	0.58
1:A:22[B]:ARG:HG3	1:A:22[B]:ARG:NH1	1.98	0.58
1:A:52:ILE:CG2	1:A:69:VAL:HG21	2.34	0.58
1:A:164:VAL:HG23	3:A:2010:HOH:O	2.00	0.58
1:A:143:LEU:HD13	1:A:146:PHE:HE2	1.69	0.57
1:A:165:THR:HG23	3:A:2138:HOH:O	2.03	0.57
1:A:47:THR:HG22	3:A:2032:HOH:O	2.04	0.57
1:A:148:LEU:HG	3:A:2022:HOH:O	2.04	0.57
1:A:145:ASP:CG	2:A:500[B]:CDK:C13	2.73	0.57
1:A:128:LEU:HD21	1:A:143:LEU:HD22	1.87	0.56
1:A:135:ILE:HD12	1:A:296:LEU:HD11	1.86	0.56
1:A:124:LEU:CD2	1:A:182:THR:HA	2.36	0.56
2:A:500[B]:CDK:H172	3:A:2123:HOH:O	2.06	0.56
1:A:84:HIS:HB3	1:A:298:LEU:HD22	1.88	0.55
1:A:178:LYS:CE	3:A:2145:HOH:O	2.55	0.55
1:A:63:ILE:HD12	1:A:143:LEU:HB2	1.89	0.55
1:A:39:THR:HA	3:A:2028:HOH:O	2.05	0.55
1:A:177:CYS:HB2	1:A:233:MET:HE2	1.89	0.55
1:A:83:LEU:HD21	1:A:142:LYS:HD2	1.89	0.54
1:A:169[B]:ARG:NH2	3:A:2142:HOH:O	2.15	0.54
2:A:500[A]:CDK:H3	2:A:500[A]:CDK:N	2.22	0.54
1:A:111:LEU:HD13	1:A:141:ILE:HG23	1.89	0.54
1:A:6:LYS:CE	1:A:34:LYS:HE2	2.38	0.53
1:A:145:ASP:CG	2:A:500[A]:CDK:H131	2.29	0.53
1:A:146:PHE:CD1	1:A:146:PHE:C	2.82	0.53
2:A:500[A]:CDK:H12	2:A:500[A]:CDK:C17	2.38	0.53
1:A:17:VAL:HB	3:A:2013:HOH:O	2.08	0.53
1:A:246:GLN:NE2	1:A:250:LYS:HD3	2.24	0.53
1:A:36:ARG:HA	1:A:36:ARG:NE	2.24	0.52
1:A:62:ASN:C	1:A:63:ILE:HD13	2.30	0.52
1:A:73:GLU:HB2	3:A:2061:HOH:O	2.08	0.52
1:A:118[B]:CYS:SG	1:A:146:PHE:CZ	2.78	0.52
1:A:158:THR:HG22	1:A:162:GLU:O	2.10	0.51
1:A:37:LEU:HB3	1:A:43:GLY:O	2.10	0.51
1:A:123:VAL:HG12	1:A:146:PHE:HE1	1.76	0.50
1:A:174:LEU:HB3	1:A:212:LEU:HD13	1.94	0.50
1:A:37:LEU:CD1	1:A:44:VAL:HG13	2.42	0.49
1:A:18:VAL:HG21	2:A:500[B]:CDK:C14	2.43	0.48
1:A:22[B]:ARG:CG	1:A:22[B]:ARG:NH1	2.62	0.48

Continued on next page...

Continued from previous page...

Atom-1	Atom-2	Interatomic distance (Å)	Clash overlap (Å)
1:A:62:ASN:O	1:A:63:ILE:HD13	2.13	0.48
1:A:242:LYS:NZ	3:A:2197:HOH:O	2.27	0.48
1:A:34:LYS:HG3	3:A:2013:HOH:O	2.13	0.48
1:A:83:LEU:O	2:A:500[B]:CDK:H9	2.13	0.48
1:A:278:LYS:HE2	3:A:2091:HOH:O	2.13	0.47
1:A:119:HIS:CD2	1:A:182:THR:HB	2.50	0.47
1:A:15:TYR:OH	1:A:153:GLY:C	2.53	0.47
1:A:91[A]:MET:HE1	1:A:195:GLU:O	2.14	0.47
1:A:125:HIS:CE1	1:A:144:ALA:O	2.60	0.47
1:A:81:GLU:O	2:A:500[A]:CDK:H11	2.15	0.47
2:A:500[B]:CDK:N	2:A:500[B]:CDK:C3	2.74	0.47
1:A:293:VAL:HG12	3:A:2246:HOH:O	2.15	0.47
1:A:6:LYS:CE	1:A:34:LYS:CE	2.93	0.46
1:A:14:THR:N	3:A:2011:HOH:O	2.46	0.46
1:A:110:GLN:O	1:A:113:GLN:HB2	2.15	0.46
1:A:129:LYS:HG2	1:A:132[B]:ASN:ND2	2.30	0.46
1:A:142:LYS:NZ	3:A:2067:HOH:O	2.48	0.46
1:A:178:LYS:HE2	3:A:2145:HOH:O	2.15	0.46
1:A:146:PHE:C	1:A:146:PHE:HD1	2.19	0.46
1:A:18:VAL:HG22	1:A:33:LYS:HG3	1.96	0.46
1:A:139:GLY:HA2	1:A:294:PRO:HD3	1.97	0.46
1:A:17:VAL:HG13	1:A:159:TYR:OH	2.16	0.46
1:A:106:SER:HB2	1:A:290:THR:O	2.16	0.45
1:A:126:ARG:HD2	1:A:149:ALA:HB3	1.97	0.45
1:A:153:GLY:O	1:A:155:PRO:HD3	2.17	0.45
1:A:129:LYS:HA	1:A:192:ILE:HD11	1.99	0.45
1:A:16:GLY:HA3	1:A:34:LYS:O	2.17	0.45
1:A:1:MET:CG	1:A:2:GLU:N	2.79	0.45
1:A:158:THR:HG21	1:A:160:THR:CG2	2.40	0.45
1:A:265:GLN:NE2	3:A:2218:HOH:O	2.30	0.44
1:A:145:ASP:OD1	2:A:500[A]:CDK:H133	2.17	0.43
1:A:59:ASN:ND2	3:A:2045:HOH:O	2.50	0.43
1:A:60:HIS:HD2	1:A:62:ASN:N	2.03	0.43
1:A:14:THR:HG21	1:A:154:VAL:CG1	2.42	0.43
1:A:63:ILE:HD11	1:A:143:LEU:HD12	2.00	0.43
1:A:119:HIS:HE1	1:A:185:ASP:OD2	2.01	0.43
1:A:136:ASN:OD1	1:A:136:ASN:C	2.56	0.43
1:A:146:PHE:CD1	1:A:147:GLY:N	2.87	0.43
1:A:33:LYS:HE2	2:A:500[B]:CDK:H132	2.01	0.43
1:A:33:LYS:HE2	2:A:500[B]:CDK:C13	2.49	0.43
1:A:15:TYR:N	3:A:2011:HOH:O	2.37	0.42

Continued on next page...

Continued from previous page...

Atom-1	Atom-2	Interatomic distance (Å)	Clash overlap (Å)
1:A:35:ILE:CD1	1:A:78:LEU:HG	2.49	0.42
1:A:12:GLU:HB3	1:A:160:THR:HG21	2.00	0.42
1:A:23:ASN:OD1	1:A:23:ASN:C	2.58	0.42
1:A:37:LEU:HD13	1:A:37:LEU:HA	1.93	0.42
1:A:33:LYS:HE2	2:A:500[A]:CDK:C13	2.49	0.42
1:A:14:THR:O	1:A:14:THR:HG22	2.19	0.42
1:A:202:LEU:HD13	1:A:203:PHE:CE2	2.54	0.42
1:A:62:ASN:ND2	1:A:110:GLN:HB3	2.34	0.42
1:A:205:GLY:HA3	1:A:211:GLN:OE1	2.20	0.42
1:A:63:ILE:HD12	1:A:143:LEU:HD12	2.01	0.42
1:A:96:LEU:HD22	1:A:96:LEU:HA	1.89	0.41
2:A:500[A]:CDK:N	2:A:500[A]:CDK:C3	2.82	0.41
1:A:34:LYS:HG2	1:A:77:TYR:HE1	1.82	0.41
1:A:73:GLU:HB3	1:A:74:ASN:H	1.68	0.41
1:A:37:LEU:HD21	1:A:76:LEU:HB2	2.02	0.41
2:A:500[A]:CDK:C6	3:A:2020:HOH:O	2.68	0.41
1:A:20:LYS:HE3	1:A:82:PHE:CZ	2.55	0.41
1:A:294:PRO:CG	1:A:296:LEU:HD13	2.51	0.41
1:A:55:LEU:HA	3:A:2034:HOH:O	2.22	0.40
1:A:146:PHE:HD1	1:A:147:GLY:N	2.19	0.40
1:A:283:HIS:CG	1:A:284:PRO:HD2	2.56	0.40
1:A:125:HIS:O	1:A:126:ARG:HB2	2.22	0.40
1:A:3:ASN:ND2	1:A:3:ASN:H	2.19	0.40
1:A:275:ILE:HD13	1:A:275:ILE:HG21	1.92	0.40
1:A:293:VAL:O	1:A:293:VAL:HG22	2.20	0.40

There are no symmetry-related clashes.

5.3 Torsion angles [i](#)

5.3.1 Protein backbone [i](#)

In the following table, the Percentiles column shows the percent Ramachandran outliers of the chain as a percentile score with respect to all X-ray entries followed by that with respect to entries of similar resolution.

The Analysed column shows the number of residues for which the backbone conformation was analysed, and the total number of residues.

Mol	Chain	Analysed	Favoured	Allowed	Outliers	Percentiles
1	A	297/298 (100%)	282 (95%)	14 (5%)	1 (0%)	41 31

All (1) Ramachandran outliers are listed below:

Mol	Chain	Res	Type
1	A	2	GLU

5.3.2 Protein sidechains [i](#)

In the following table, the Percentiles column shows the percent sidechain outliers of the chain as a percentile score with respect to all X-ray entries followed by that with respect to entries of similar resolution.

The Analysed column shows the number of residues for which the sidechain conformation was analysed, and the total number of residues.

Mol	Chain	Analysed	Rotameric	Outliers	Percentiles
1	A	266/263 (101%)	231 (87%)	35 (13%)	4 1

All (35) residues with a non-rotameric sidechain are listed below:

Mol	Chain	Res	Type
1	A	1	MET
1	A	3	ASN
1	A	7	VAL
1	A	8	GLU
1	A	12	GLU
1	A	17	VAL
1	A	32	LEU
1	A	38	ASP
1	A	39	THR
1	A	51	GLU
1	A	52	ILE
1	A	63	ILE
1	A	67	LEU
1	A	75	LYS
1	A	76	LEU
1	A	96	LEU
1	A	111	LEU
1	A	122	ARG
1	A	129	LYS
1	A	131[A]	GLN
1	A	131[B]	GLN
1	A	133	LEU
1	A	138	GLU
1	A	145	ASP

Continued on next page...

Continued from previous page...

Mol	Chain	Res	Type
1	A	146	PHE
1	A	148	LEU
1	A	160	THR
1	A	166	LEU
1	A	174	LEU
1	A	200	ARG
1	A	202	LEU
1	A	242	LYS
1	A	267	LEU
1	A	287	GLN
1	A	297	ARG

Sometimes sidechains can be flipped to improve hydrogen bonding and reduce clashes. All (6) such sidechains are listed below:

Mol	Chain	Res	Type
1	A	3	ASN
1	A	60	HIS
1	A	85	GLN
1	A	119	HIS
1	A	125	HIS
1	A	246	GLN

5.3.3 RNA [i](#)

There are no RNA molecules in this entry.

5.4 Non-standard residues in protein, DNA, RNA chains [i](#)

There are no non-standard protein/DNA/RNA residues in this entry.

5.5 Carbohydrates [i](#)

There are no monosaccharides in this entry.

5.6 Ligand geometry [i](#)

2 ligands are modelled in this entry.

In the following table, the Counts columns list the number of bonds (or angles) for which Mogul statistics could be retrieved, the number of bonds (or angles) that are observed in the model and the number of bonds (or angles) that are defined in the Chemical Component Dictionary. The Link column lists molecule types, if any, to which the group is linked. The Z score for a bond length (or angle) is the number of standard deviations the observed value is removed from the expected value. A bond length (or angle) with $|Z| > 2$ is considered an outlier worth inspection. RMSZ is the root-mean-square of all Z scores of the bond lengths (or angles).

Mol	Type	Chain	Res	Link	Bond lengths			Bond angles		
					Counts	RMSZ	# Z > 2	Counts	RMSZ	# Z > 2
2	CDK	A	500[B]	-	30,31,31	2.64	9 (30%)	38,44,44	2.84	14 (36%)
2	CDK	A	500[A]	-	30,31,31	2.66	8 (26%)	38,44,44	2.84	16 (42%)

In the following table, the Chirals column lists the number of chiral outliers, the number of chiral centers analysed, the number of these observed in the model and the number defined in the Chemical Component Dictionary. Similar counts are reported in the Torsion and Rings columns. '-' means no outliers of that kind were identified.

Mol	Type	Chain	Res	Link	Chirals	Torsions	Rings
2	CDK	A	500[B]	-	-	6/20/20/20	0/3/3/3
2	CDK	A	500[A]	-	-	7/20/20/20	0/3/3/3

All (17) bond length outliers are listed below:

Mol	Chain	Res	Type	Atoms	Z	Observed(Å)	Ideal(Å)
2	A	500[B]	CDK	O2-S	6.90	1.51	1.43
2	A	500[A]	CDK	O2-S	6.87	1.51	1.43
2	A	500[B]	CDK	O1-S	6.11	1.50	1.43
2	A	500[A]	CDK	O1-S	6.08	1.50	1.43
2	A	500[A]	CDK	C-C15	-6.08	1.39	1.47
2	A	500[B]	CDK	C-C15	-5.94	1.39	1.47
2	A	500[A]	CDK	C14-S1	-5.84	1.70	1.77
2	A	500[B]	CDK	C14-S1	-5.37	1.71	1.77
2	A	500[A]	CDK	C2-N1	-3.66	1.32	1.40
2	A	500[B]	CDK	C2-N1	-3.51	1.33	1.40
2	A	500[A]	CDK	C14-N4	-3.22	1.34	1.37
2	A	500[A]	CDK	C16-N4	-3.09	1.34	1.39
2	A	500[B]	CDK	S-N2	3.08	1.66	1.61
2	A	500[B]	CDK	C14-N4	-3.06	1.34	1.37
2	A	500[B]	CDK	C17-C16	2.99	1.54	1.49
2	A	500[B]	CDK	C16-N4	-2.90	1.35	1.39
2	A	500[A]	CDK	C17-C16	2.51	1.53	1.49

All (30) bond angle outliers are listed below:

Mol	Chain	Res	Type	Atoms	Z	Observed(°)	Ideal(°)
2	A	500[A]	CDK	O2-S-O1	-9.97	107.41	119.52
2	A	500[B]	CDK	O2-S-O1	-9.43	108.07	119.52
2	A	500[B]	CDK	C11-N3-C1	7.38	121.58	115.42
2	A	500[A]	CDK	C11-N3-C1	6.99	121.26	115.42
2	A	500[B]	CDK	N3-C1-N	-5.54	121.06	126.42
2	A	500[A]	CDK	N3-C1-N	-4.65	121.92	126.42
2	A	500[A]	CDK	C15-C-N	4.15	120.72	115.20
2	A	500[B]	CDK	C15-C-N	4.06	120.61	115.20
2	A	500[A]	CDK	C12-C11-N3	-3.99	119.08	123.97
2	A	500[B]	CDK	C12-C11-N3	-3.92	119.16	123.97
2	A	500[B]	CDK	C-C15-S1	3.70	124.94	118.24
2	A	500[B]	CDK	C-N-C1	3.45	119.48	116.87
2	A	500[A]	CDK	C6-N2-S	-3.39	110.07	120.27
2	A	500[A]	CDK	C5-S-N2	3.36	112.18	107.54
2	A	500[A]	CDK	C-C15-S1	3.29	124.18	118.24
2	A	500[B]	CDK	C11-C12-C	3.12	118.94	117.02
2	A	500[A]	CDK	C11-C12-C	3.11	118.93	117.02
2	A	500[A]	CDK	C10-C5-S	-3.00	116.46	119.76
2	A	500[B]	CDK	C10-C5-S	-2.90	116.57	119.76
2	A	500[B]	CDK	C4-C5-S	2.77	122.80	119.76
2	A	500[B]	CDK	C12-C-N	-2.73	119.73	122.92
2	A	500[A]	CDK	C4-C5-S	2.71	122.73	119.76
2	A	500[B]	CDK	O1-S-N2	2.58	111.05	107.03
2	A	500[B]	CDK	C5-S-N2	2.51	111.01	107.54
2	A	500[A]	CDK	C12-C-C15	-2.37	118.97	122.88
2	A	500[B]	CDK	O2-S-N2	2.32	110.64	107.03
2	A	500[A]	CDK	C12-C-N	-2.29	120.25	122.92
2	A	500[A]	CDK	O2-S-N2	2.28	110.58	107.03
2	A	500[A]	CDK	C-N-C1	2.17	118.52	116.87
2	A	500[A]	CDK	O1-S-N2	2.11	110.31	107.03

There are no chirality outliers.

All (13) torsion outliers are listed below:

Mol	Chain	Res	Type	Atoms
2	A	500[A]	CDK	C6-N2-S-C5
2	A	500[A]	CDK	N2-C6-C7-O
2	A	500[B]	CDK	C6-C7-O-C8
2	A	500[A]	CDK	C10-C5-S-O1
2	A	500[A]	CDK	C4-C5-S-O1
2	A	500[B]	CDK	C6-N2-S-O2
2	A	500[A]	CDK	C6-C7-O-C8
2	A	500[B]	CDK	C4-C5-S-O1

Continued on next page...

Continued from previous page...

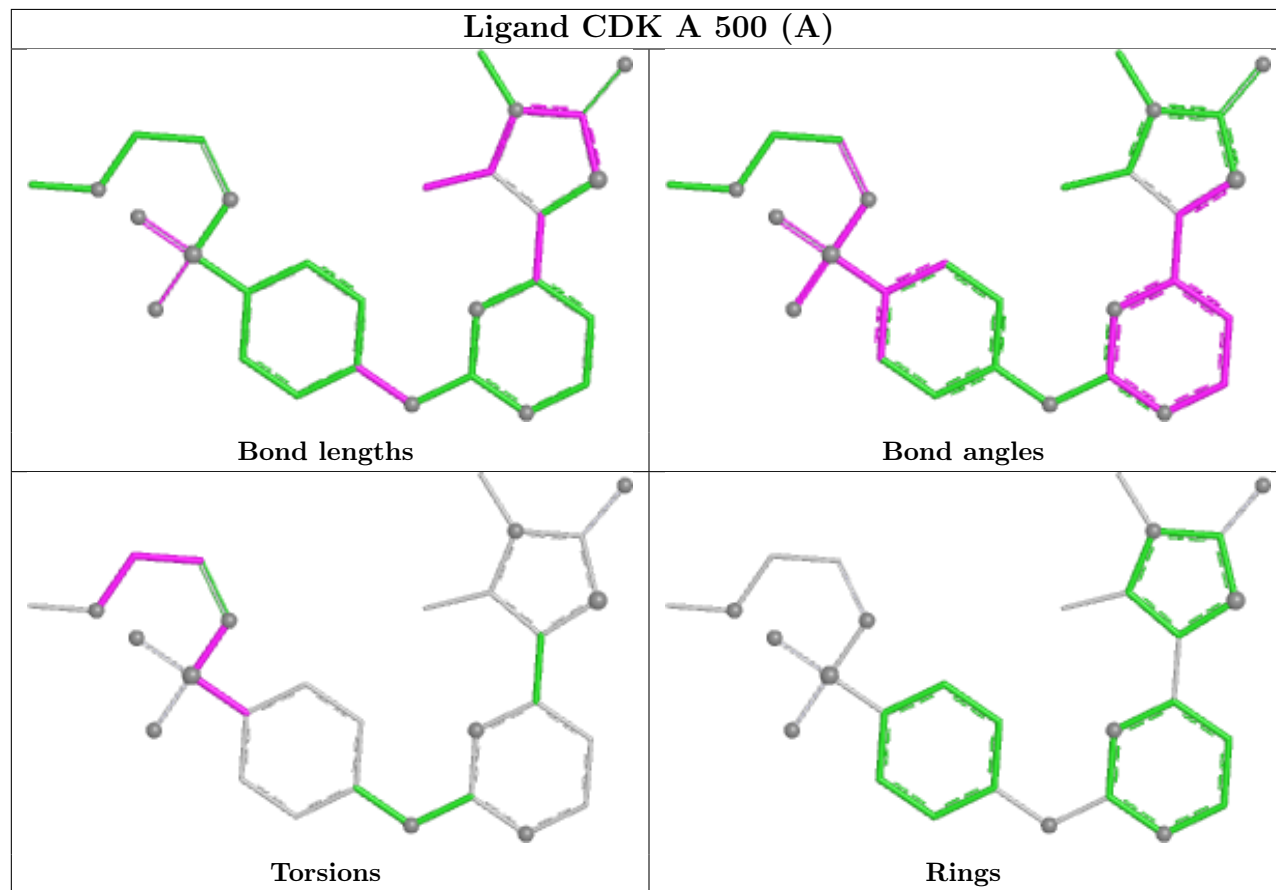
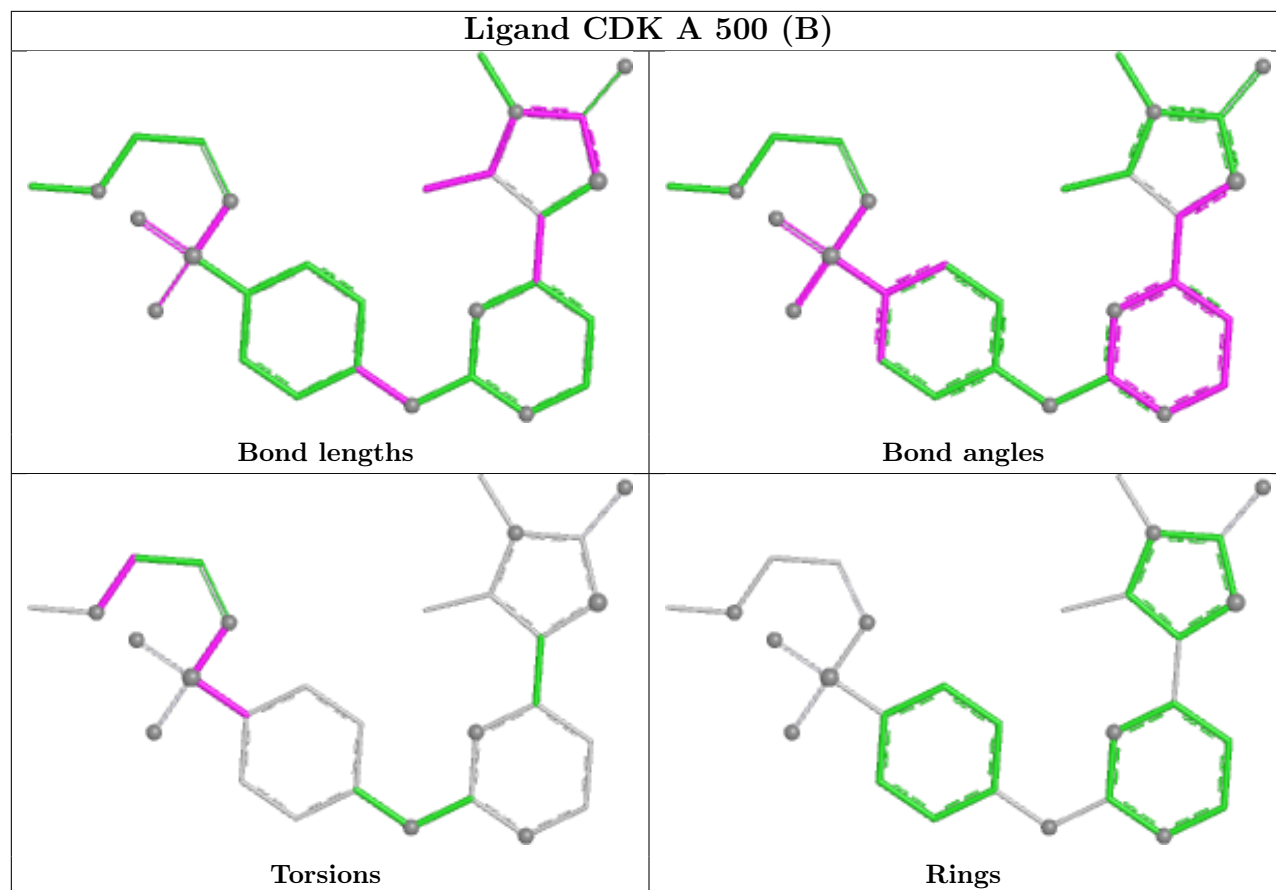
Mol	Chain	Res	Type	Atoms
2	A	500[B]	CDK	C10-C5-S-O1
2	A	500[B]	CDK	C6-N2-S-C5
2	A	500[B]	CDK	C6-N2-S-O1
2	A	500[A]	CDK	C10-C5-S-N2
2	A	500[A]	CDK	C4-C5-S-N2

There are no ring outliers.

2 monomers are involved in 28 short contacts:

Mol	Chain	Res	Type	Clashes	Symm-Clashes
2	A	500[B]	CDK	15	0
2	A	500[A]	CDK	13	0

The following is a two-dimensional graphical depiction of Mogul quality analysis of bond lengths, bond angles, torsion angles, and ring geometry for all instances of the Ligand of Interest. In addition, ligands with molecular weight > 250 and outliers as shown on the validation Tables will also be included. For torsion angles, if less than 5% of the Mogul distribution of torsion angles is within 10 degrees of the torsion angle in question, then that torsion angle is considered an outlier. Any bond that is central to one or more torsion angles identified as an outlier by Mogul will be highlighted in the graph. For rings, the root-mean-square deviation (RMSD) between the ring in question and similar rings identified by Mogul is calculated over all ring torsion angles. If the average RMSD is greater than 60 degrees and the minimal RMSD between the ring in question and any Mogul-identified rings is also greater than 60 degrees, then that ring is considered an outlier. The outliers are highlighted in purple. The color gray indicates Mogul did not find sufficient equivalents in the CSD to analyse the geometry.



5.7 Other polymers [i](#)

There are no such residues in this entry.

5.8 Polymer linkage issues [i](#)

There are no chain breaks in this entry.

6 Fit of model and data

6.1 Protein, DNA and RNA chains

In the following table, the column labelled ‘#RSRZ> 2’ contains the number (and percentage) of RSRZ outliers, followed by percent RSRZ outliers for the chain as percentile scores relative to all X-ray entries and entries of similar resolution. The OWAB column contains the minimum, median, 95th percentile and maximum values of the occupancy-weighted average B-factor per residue. The column labelled ‘Q< 0.9’ lists the number of (and percentage) of residues with an average occupancy less than 0.9.

Mol	Chain	Analysed	<RSRZ>	#RSRZ>2	OWAB(Å ²)	Q<0.9
1	A	295/298 (98%)	0.64	35 (11%) 4 5	26, 42, 99, 142	0

All (35) RSRZ outliers are listed below:

Mol	Chain	Res	Type	RSRZ
1	A	154	VAL	14.1
1	A	155	PRO	10.9
1	A	159	TYR	10.5
1	A	25	LEU	8.2
1	A	156	VAL	7.6
1	A	74	ASN	6.9
1	A	43	GLY	6.8
1	A	158	THR	6.6
1	A	44	VAL	6.0
1	A	39	THR	5.9
1	A	73	GLU	5.9
1	A	37	LEU	5.4
1	A	157	ARG	5.0
1	A	164	VAL	4.8
1	A	152	PHE	4.6
1	A	38	ASP	4.4
1	A	72	THR	4.1
1	A	151	ALA	4.1
1	A	162	GLU	3.9
1	A	160	THR	3.7
1	A	96	LEU	3.6
1	A	161	HIS	3.5
1	A	153	GLY	3.5
1	A	15	TYR	3.0
1	A	75	LYS	3.0
1	A	47	THR	2.7
1	A	26	THR	2.7

Continued on next page...

Continued from previous page...

Mol	Chain	Res	Type	RSRZ
1	A	163	VAL	2.6
1	A	12	GLU	2.6
1	A	179	TYR	2.5
1	A	46	SER	2.2
1	A	297	ARG	2.2
1	A	78	LEU	2.1
1	A	146	PHE	2.1
1	A	36	ARG	2.0

6.2 Non-standard residues in protein, DNA, RNA chains [i](#)

There are no non-standard protein/DNA/RNA residues in this entry.

6.3 Carbohydrates [i](#)

There are no monosaccharides in this entry.

6.4 Ligands [i](#)

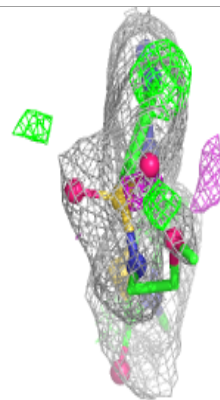
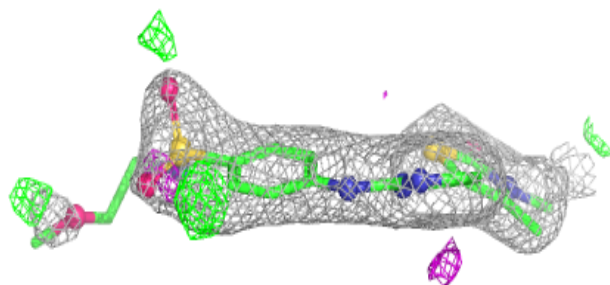
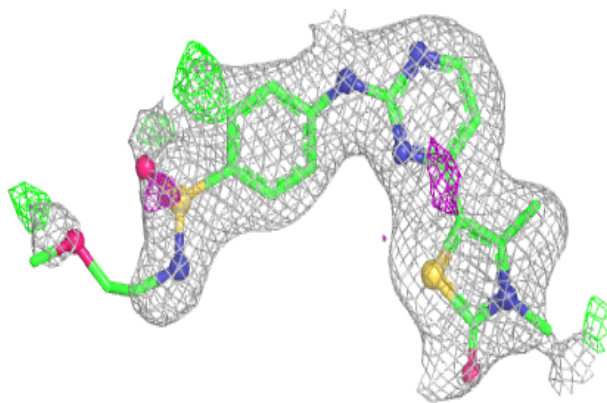
In the following table, the Atoms column lists the number of modelled atoms in the group and the number defined in the chemical component dictionary. The B-factors column lists the minimum, median, 95th percentile and maximum values of B factors of atoms in the group. The column labelled 'Q< 0.9' lists the number of atoms with occupancy less than 0.9.

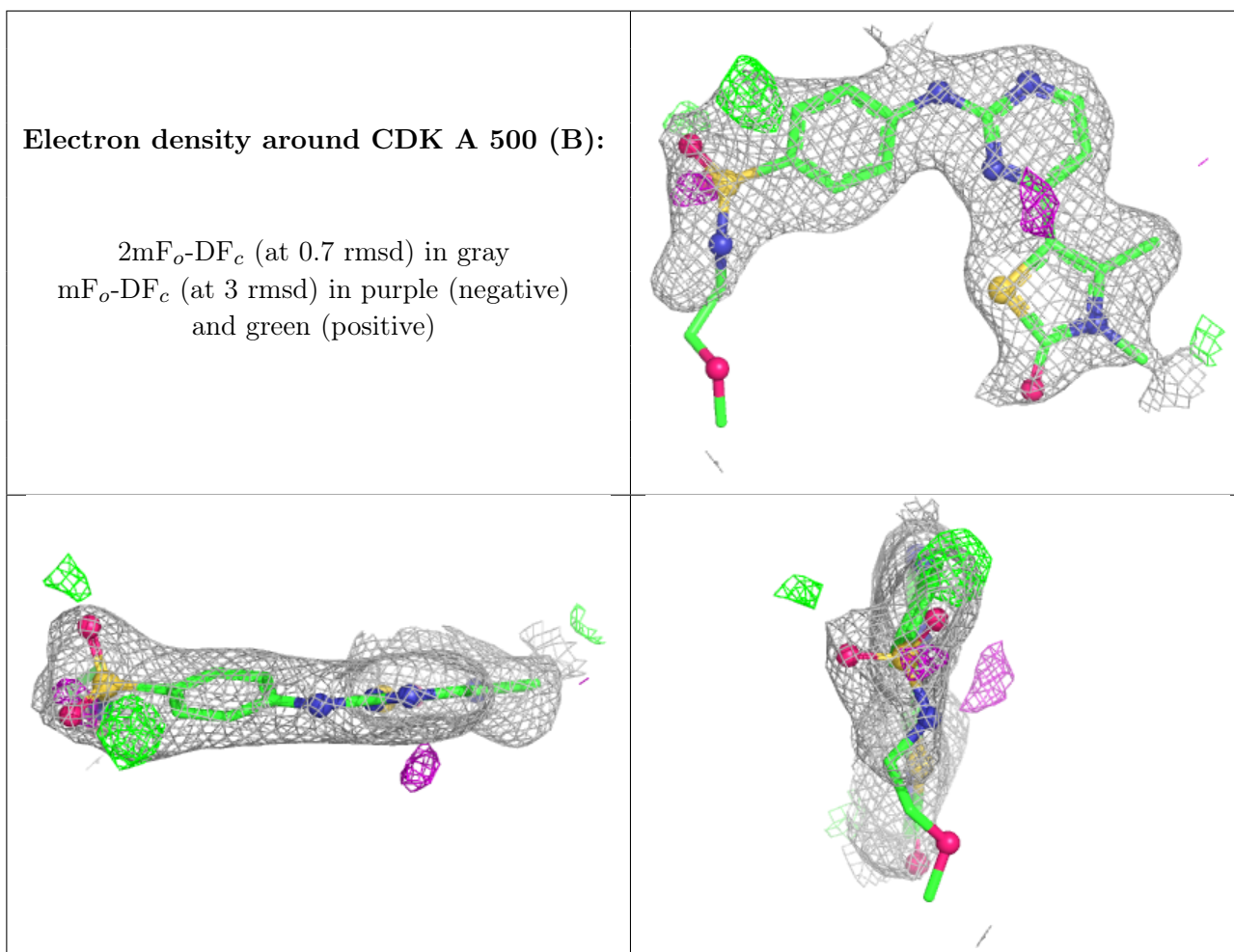
Mol	Type	Chain	Res	Atoms	RSCC	RSR	B-factors(Å ²)	Q<0.9
2	CDK	A	500[A]	29/29	0.85	0.20	36,50,66,71	29
2	CDK	A	500[B]	29/29	0.85	0.20	39,60,73,75	29

The following is a graphical depiction of the model fit to experimental electron density of all instances of the Ligand of Interest. In addition, ligands with molecular weight > 250 and outliers as shown on the geometry validation Tables will also be included. Each fit is shown from different orientation to approximate a three-dimensional view.

Electron density around CDK A 500 (A):

$2mF_o-DF_c$ (at 0.7 rmsd) in gray
 mF_o-DF_c (at 3 rmsd) in purple (negative)
and green (positive)





6.5 Other polymers [\(i\)](#)

There are no such residues in this entry.