



# Full wwPDB X-ray Structure Validation Report ⓘ

Apr 28, 2024 – 07:24 am BST

PDB ID : 2XAS  
Title : Crystal structure of LSD1-CoREST in complex with a tranlycypromine derivative (MC2580, 14e)  
Authors : Binda, C.; Valente, S.; Romanenghi, M.; Pilotto, S.; Cirilli, R.; Karytinis, A.; Ciossani, G.; Botrugno, O.A.; Forneris, F.; Tardugno, M.; Edmondson, D.E.; Minucci, S.; Mattevi, A.; Mai, A.  
Deposited on : 2010-03-31  
Resolution : 3.20 Å(reported)

This is a Full wwPDB X-ray Structure Validation Report for a publicly released PDB entry.

We welcome your comments at [validation@mail.wwpdb.org](mailto:validation@mail.wwpdb.org)

A user guide is available at

<https://www.wwpdb.org/validation/2017/XrayValidationReportHelp>

with specific help available everywhere you see the ⓘ symbol.

The types of validation reports are described at

<http://www.wwpdb.org/validation/2017/FAQs#types>.

---

The following versions of software and data (see [references](#) ①) were used in the production of this report:

MolProbity : 4.02b-467  
Mogul : 1.8.4, CSD as541be (2020)  
Xtrriage (Phenix) : 1.13  
EDS : 2.36.2  
buster-report : 1.1.7 (2018)  
Percentile statistics : 20191225.v01 (using entries in the PDB archive December 25th 2019)  
Refmac : 5.8.0158  
CCP4 : 7.0.044 (Gargrove)  
Ideal geometry (proteins) : Engh & Huber (2001)  
Ideal geometry (DNA, RNA) : Parkinson et al. (1996)  
Validation Pipeline (wwPDB-VP) : 2.36.2

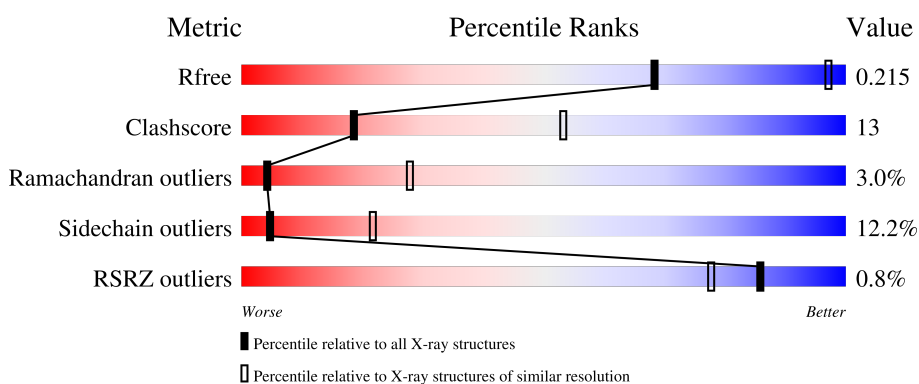
# 1 Overall quality at a glance i

The following experimental techniques were used to determine the structure:

*X-RAY DIFFRACTION*

The reported resolution of this entry is 3.20 Å.

Percentile scores (ranging between 0-100) for global validation metrics of the entry are shown in the following graphic. The table shows the number of entries on which the scores are based.



Metric	Whole archive (#Entries)	Similar resolution (#Entries, resolution range(Å))
$R_{free}$	130704	1133 (3.20-3.20)
Clashscore	141614	1253 (3.20-3.20)
Ramachandran outliers	138981	1234 (3.20-3.20)
Sidechain outliers	138945	1233 (3.20-3.20)
RSRZ outliers	127900	1095 (3.20-3.20)

The table below summarises the geometric issues observed across the polymeric chains and their fit to the electron density. The red, orange, yellow and green segments of the lower bar indicate the fraction of residues that contain outliers for  $\geq 3$ , 2, 1 and 0 types of geometric quality criteria respectively. A grey segment represents the fraction of residues that are not modelled. The numeric value for each fraction is indicated below the corresponding segment, with a dot representing fractions  $\leq 5\%$ . The upper red bar (where present) indicates the fraction of residues that have poor fit to the electron density. The numeric value is given above the bar.

Mol	Chain	Length	Quality of chain
1	A	852	<div style="display: flex; align-items: center;"> <div style="width: 10px; height: 10px; background-color: red; margin-right: 5px;"></div> <div style="flex-grow: 1; position: relative;"> <div style="position: absolute; top: -10px; left: 0; width: 100%; text-align: center;">%</div> <div style="position: absolute; top: 0; left: 0; width: 52%; height: 10px; background-color: green;"></div> <div style="position: absolute; top: 0; left: 52%; width: 23%; height: 10px; background-color: yellow;"></div> <div style="position: absolute; top: 0; left: 75%; width: 22%; height: 10px; background-color: grey;"></div> </div> </div>
2	B	482	<div style="display: flex; align-items: center;"> <div style="width: 14%; height: 10px; background-color: green; margin-right: 5px;"></div> <div style="width: 12%; height: 10px; background-color: yellow; margin-right: 5px;"></div> <div style="width: 1%; height: 10px; background-color: orange; margin-right: 5px;"></div> <div style="width: 72%; height: 10px; background-color: grey;"></div> </div>

## 2 Entry composition [i](#)

There are 4 unique types of molecules in this entry. The entry contains 6378 atoms, of which 0 are hydrogens and 0 are deuteriums.

In the tables below, the ZeroOcc column contains the number of atoms modelled with zero occupancy, the AltConf column contains the number of residues with at least one atom in alternate conformation and the Trace column contains the number of residues modelled with at most 2 atoms.

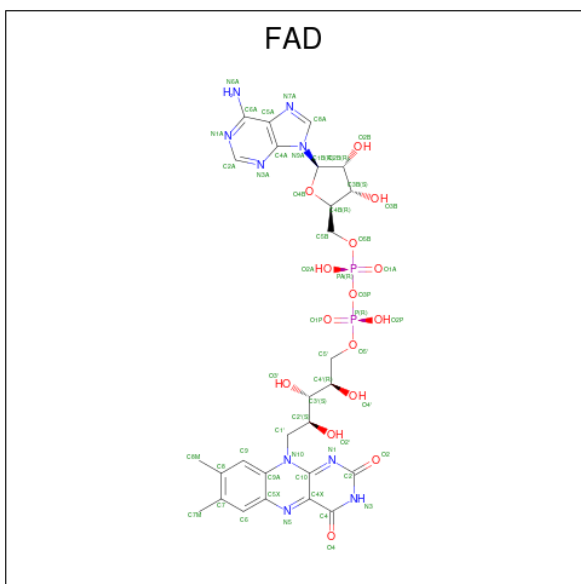
- Molecule 1 is a protein called LYSINE-SPECIFIC HISTONE DEMETHYLASE 1.

Mol	Chain	Residues	Atoms					ZeroOcc	AltConf	Trace
			Total	C	N	O	S			
1	A	666	5217	3324	906	967	20	0	0	0

- Molecule 2 is a protein called REST COREPRESSOR 1.

Mol	Chain	Residues	Atoms					ZeroOcc	AltConf	Trace
			Total	C	N	O	S			
2	B	133	1076	676	194	203	3	0	0	0

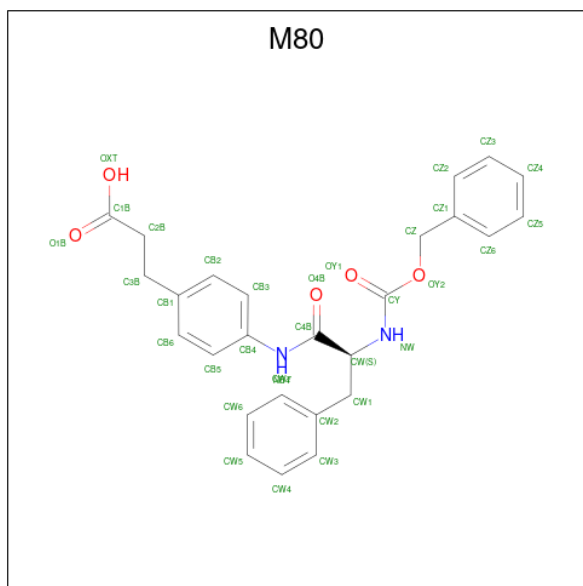
- Molecule 3 is FLAVIN-ADENINE DINUCLEOTIDE (three-letter code: FAD) (formula:  $C_{27}H_{33}N_9O_{15}P_2$ ).



Mol	Chain	Residues	Atoms					ZeroOcc	AltConf
			Total	C	N	O	P		
3	A	1	53	27	9	15	2	0	0

- Molecule 4 is 3-[4-({N-[(BENZYLOXY)CARBONYL]-L-PHENYLALANYL}AMINO)PHE

NYL]PROPANOIC ACID (three-letter code: M80) (formula:  $C_{26}H_{26}N_2O_5$ ).



Mol	Chain	Residues	Atoms				ZeroOcc	AltConf
			Total	C	N	O		
4	A	1	32	26	2	4	0	0





## 4 Data and refinement statistics

Property	Value	Source
Space group	I 2 2 2	Depositor
Cell constants a, b, c, $\alpha$ , $\beta$ , $\gamma$	118.32Å 179.69Å 235.26Å 90.00° 90.00° 90.00°	Depositor
Resolution (Å)	71.40 – 3.20 71.40 – 3.20	Depositor EDS
% Data completeness (in resolution range)	99.8 (71.40-3.20) 99.8 (71.40-3.20)	Depositor EDS
$R_{merge}$	0.09	Depositor
$R_{sym}$	(Not available)	Depositor
$\langle I/\sigma(I) \rangle$ <sup>1</sup>	2.49 (at 3.19Å)	Xtrriage
Refinement program	REFMAC 5.5.0090	Depositor
R, $R_{free}$	0.200 , 0.220 0.198 , 0.215	Depositor DCC
$R_{free}$ test set	803 reflections (1.93%)	wwPDB-VP
Wilson B-factor (Å <sup>2</sup> )	82.0	Xtrriage
Anisotropy	0.110	Xtrriage
Bulk solvent $k_{sol}$ (e/Å <sup>3</sup> ), $B_{sol}$ (Å <sup>2</sup> )	0.34 , 59.7	EDS
L-test for twinning <sup>2</sup>	$\langle  L  \rangle = 0.47$ , $\langle L^2 \rangle = 0.30$	Xtrriage
Estimated twinning fraction	No twinning to report.	Xtrriage
$F_o, F_c$ correlation	0.93	EDS
Total number of atoms	6378	wwPDB-VP
Average B, all atoms (Å <sup>2</sup> )	75.0	wwPDB-VP

Xtrriage's analysis on translational NCS is as follows: *The largest off-origin peak in the Patterson function is 3.31% of the height of the origin peak. No significant pseudotranslation is detected.*

<sup>1</sup>Intensities estimated from amplitudes.

<sup>2</sup>Theoretical values of  $\langle |L| \rangle$ ,  $\langle L^2 \rangle$  for acentric reflections are 0.5, 0.333 respectively for untwinned datasets, and 0.375, 0.2 for perfectly twinned datasets.



## 5 Model quality [i](#)

### 5.1 Standard geometry [i](#)

Bond lengths and bond angles in the following residue types are not validated in this section: FAD, M80

The Z score for a bond length (or angle) is the number of standard deviations the observed value is removed from the expected value. A bond length (or angle) with  $|Z| > 5$  is considered an outlier worth inspection. RMSZ is the root-mean-square of all Z scores of the bond lengths (or angles).

Mol	Chain	Bond lengths		Bond angles	
		RMSZ	# Z  >5	RMSZ	# Z  >5
1	A	0.69	1/5331 (0.0%)	0.78	3/7232 (0.0%)
2	B	0.60	0/1091	0.69	0/1471
All	All	0.68	1/6422 (0.0%)	0.76	3/8703 (0.0%)

Chiral center outliers are detected by calculating the chiral volume of a chiral center and verifying if the center is modelled as a planar moiety or with the opposite hand. A planarity outlier is detected by checking planarity of atoms in a peptide group, atoms in a mainchain group or atoms of a sidechain that are expected to be planar.

Mol	Chain	#Chirality outliers	#Planarity outliers
1	A	0	2

All (1) bond length outliers are listed below:

Mol	Chain	Res	Type	Atoms	Z	Observed(Å)	Ideal(Å)
1	A	195	CYS	CB-SG	-5.01	1.73	1.81

All (3) bond angle outliers are listed below:

Mol	Chain	Res	Type	Atoms	Z	Observed(°)	Ideal(°)
1	A	815	LEU	CA-CB-CG	5.43	127.79	115.30
1	A	281	VAL	CB-CA-C	-5.21	101.50	111.40
1	A	316	ARG	NE-CZ-NH1	5.20	122.90	120.30

There are no chirality outliers.

All (2) planarity outliers are listed below:

Mol	Chain	Res	Type	Group
1	A	274	PRO	Peptide

*Continued on next page...*

*Continued from previous page...*

Mol	Chain	Res	Type	Group
1	A	792	PRO	Peptide

## 5.2 Too-close contacts [i](#)

In the following table, the Non-H and H(model) columns list the number of non-hydrogen atoms and hydrogen atoms in the chain respectively. The H(added) column lists the number of hydrogen atoms added and optimized by MolProbity. The Clashes column lists the number of clashes within the asymmetric unit, whereas Symm-Clashes lists symmetry-related clashes.

Mol	Chain	Non-H	H(model)	H(added)	Clashes	Symm-Clashes
1	A	5217	0	5252	137	0
2	B	1076	0	1091	43	0
3	A	53	0	31	6	0
4	A	32	0	25	8	0
All	All	6378	0	6399	169	0

The all-atom clashscore is defined as the number of clashes found per 1000 atoms (including hydrogen atoms). The all-atom clashscore for this structure is 13.

All (169) close contacts within the same asymmetric unit are listed below, sorted by their clash magnitude.

Atom-1	Atom-2	Interatomic distance (Å)	Clash overlap (Å)
1:A:453:GLU:HA	1:A:453:GLU:OE1	1.54	1.07
1:A:384:ARG:HB3	2:B:314:MET:HE1	1.52	0.92
1:A:755:PRO:HA	1:A:758:ARG:NH1	1.91	0.86
1:A:456:LYS:HA	2:B:370:TYR:CE1	2.11	0.84
1:A:510:GLU:HG3	1:A:511:LEU:HD23	1.60	0.83
1:A:807:TYR:N	1:A:808:PRO:HD3	2.00	0.76
1:A:794:PRO:HD2	1:A:828:GLN:NE2	2.01	0.75
1:A:801:GLU:CG	1:A:809:ALA:HA	2.16	0.75
1:A:456:LYS:HA	2:B:370:TYR:HE1	1.50	0.74
1:A:353:LEU:HB3	1:A:565:LEU:HD23	1.69	0.73
1:A:671:TRP:O	1:A:673:PRO:HD3	1.88	0.73
1:A:484:HIS:CD2	2:B:372:LEU:HD13	2.24	0.71
1:A:548:SER:O	1:A:552:TRP:HB3	1.92	0.70
3:A:900:FAD:C4X	4:A:901:M80:H3B1	2.21	0.69
1:A:199:ILE:HD11	1:A:248:LEU:HD11	1.74	0.69
1:A:563:SER:O	1:A:565:LEU:HD12	1.91	0.69
4:A:901:M80:HB3	4:A:901:M80:O4B	1.93	0.69
1:A:418:LEU:HD11	2:B:324:VAL:HG21	1.77	0.67

*Continued on next page...*

*Continued from previous page...*

Atom-1	Atom-2	Interatomic distance (Å)	Clash overlap (Å)
1:A:353:LEU:HB3	1:A:565:LEU:CD2	2.26	0.66
1:A:231:PHE:HE1	1:A:249:VAL:HG12	1.62	0.64
1:A:447:LYS:HD3	1:A:497:LEU:HD21	1.80	0.64
1:A:418:LEU:CD1	2:B:324:VAL:HG21	2.27	0.64
1:A:801:GLU:HG2	1:A:809:ALA:HA	1.80	0.64
1:A:366:ASN:OD1	1:A:367:GLY:N	2.31	0.64
1:A:693:LEU:HD12	1:A:694:PHE:N	2.13	0.63
1:A:801:GLU:HG3	1:A:809:ALA:HA	1.81	0.63
1:A:458:LEU:HD12	1:A:487:LEU:HD12	1.80	0.63
1:A:693:LEU:HD12	1:A:694:PHE:H	1.63	0.62
1:A:807:TYR:N	1:A:808:PRO:CD	2.63	0.61
3:A:900:FAD:C10	4:A:901:M80:H3B1	2.29	0.61
1:A:451:LEU:HD23	1:A:494:TYR:HB2	1.81	0.60
1:A:478:PHE:O	1:A:482:SER:HB3	2.01	0.60
1:A:238:LEU:HB3	1:A:243:ASN:HB3	1.82	0.60
1:A:441:LEU:HD23	2:B:356:ASN:HD22	1.65	0.60
1:A:384:ARG:HB3	2:B:314:MET:CE	2.29	0.60
3:A:900:FAD:C4	4:A:901:M80:HB6	2.32	0.60
2:B:370:TYR:N	2:B:370:TYR:HD2	2.00	0.60
2:B:418:LYS:O	2:B:421:PHE:HB2	2.02	0.59
1:A:566:THR:HG21	1:A:697:LEU:HD22	1.85	0.58
2:B:370:TYR:N	2:B:370:TYR:CD2	2.71	0.58
1:A:448:MET:HB3	2:B:363:LEU:HD11	1.85	0.57
1:A:627:LEU:O	1:A:631:LYS:HG3	2.03	0.57
1:A:606:ASN:HD22	1:A:609:SER:H	1.50	0.57
1:A:282:ILE:HG21	1:A:602:VAL:HG21	1.86	0.56
1:A:188:MET:HG2	1:A:210:PHE:HE2	1.70	0.56
2:B:417:VAL:O	2:B:420:PHE:HB3	2.06	0.55
1:A:188:MET:SD	1:A:200:ILE:HG13	2.46	0.55
1:A:366:ASN:OD1	1:A:368:GLN:N	2.40	0.55
1:A:231:PHE:CE1	1:A:249:VAL:HG12	2.40	0.54
1:A:448:MET:HG3	1:A:497:LEU:HD23	1.89	0.54
1:A:647:LYS:HE3	1:A:780:ILE:HD11	1.88	0.54
1:A:356:ILE:HG22	1:A:356:ILE:O	2.07	0.54
1:A:340:ASN:OD1	1:A:342:MET:N	2.40	0.54
1:A:473:ASP:OD1	1:A:473:ASP:C	2.46	0.54
1:A:385:LEU:O	1:A:388:ALA:HB3	2.08	0.54
1:A:456:LYS:HA	2:B:370:TYR:CD1	2.43	0.53
1:A:456:LYS:HE3	2:B:370:TYR:OH	2.09	0.53
2:B:362:LYS:C	2:B:364:ASP:H	2.12	0.53
1:A:463:LYS:O	1:A:467:GLU:HG2	2.08	0.53

*Continued on next page...*

*Continued from previous page...*

Atom-1	Atom-2	Interatomic distance (Å)	Clash overlap (Å)
2:B:421:PHE:HE2	2:B:434:LEU:HD11	1.72	0.53
1:A:311:ASP:OD1	1:A:311:ASP:N	2.37	0.53
1:A:789:ALA:HB1	1:A:790:PRO:HD2	1.90	0.53
1:A:458:LEU:CD1	1:A:487:LEU:HD12	2.39	0.52
1:A:455:ILE:HD11	1:A:490:LEU:O	2.10	0.52
1:A:537:GLU:OE2	1:A:544:LEU:HG	2.10	0.52
3:A:900:FAD:C4X	4:A:901:M80:C3B	2.88	0.51
1:A:650:ALA:O	1:A:654:MET:HG3	2.09	0.51
1:A:456:LYS:CA	2:B:370:TYR:HE1	2.22	0.51
1:A:771:ASN:HA	1:A:805:ARG:NH1	2.26	0.51
1:A:566:THR:HG21	1:A:697:LEU:CD2	2.41	0.51
2:B:425:ARG:HA	2:B:430:ILE:HG13	1.94	0.50
1:A:755:PRO:HA	1:A:758:ARG:HH12	1.71	0.50
1:A:645:GLU:HG3	1:A:646:TRP:N	2.27	0.50
2:B:308:ARG:HH11	2:B:308:ARG:HA	1.77	0.50
1:A:209:VAL:O	1:A:213:ILE:HG13	2.12	0.49
2:B:369:PRO:C	2:B:370:TYR:HD2	2.15	0.49
1:A:374:LYS:O	1:A:375:ASP:C	2.49	0.48
2:B:358:ALA:O	2:B:361:GLU:HB2	2.13	0.48
1:A:494:TYR:CD2	1:A:494:TYR:O	2.65	0.48
1:A:374:LYS:O	1:A:377:MET:N	2.47	0.48
1:A:695:TRP:HE1	1:A:706:LEU:HD22	1.77	0.48
1:A:188:MET:HG2	1:A:210:PHE:CE2	2.49	0.48
2:B:426:ARG:HB2	2:B:427:ARG:HG3	1.94	0.48
1:A:553:ASP:O	1:A:556:ASP:HB2	2.14	0.48
1:A:633:GLN:OE1	1:A:634:PRO:HA	2.14	0.48
1:A:356:ILE:HD11	1:A:566:THR:CG2	2.44	0.47
1:A:374:LYS:HE2	1:A:524:ARG:HH12	1.80	0.47
1:A:666:PHE:O	1:A:701:PRO:HG2	2.14	0.47
1:A:685:THR:O	1:A:688:ARG:HG2	2.14	0.47
1:A:335:THR:HG21	4:A:901:M80:HB4	1.80	0.47
1:A:486:ASP:OD1	2:B:398:TYR:OH	2.28	0.47
1:A:592:GLN:HB3	1:A:603:ILE:HD12	1.97	0.47
1:A:363:TYR:CD2	1:A:734:ILE:HG12	2.49	0.47
1:A:710:GLU:HA	1:A:710:GLU:OE1	2.15	0.47
1:A:465:ALA:CB	1:A:479:LEU:HD23	2.45	0.46
2:B:337:GLN:HA	2:B:337:GLN:HE21	1.80	0.46
1:A:195:CYS:HB2	1:A:196:PHE:CD1	2.51	0.46
1:A:319:THR:HB	1:A:572:SER:HB3	1.96	0.46
1:A:340:ASN:HB2	1:A:560:PHE:CD2	2.51	0.46
1:A:601:GLU:HA	1:A:616:TYR:O	2.15	0.46

*Continued on next page...*

*Continued from previous page...*

Atom-1	Atom-2	Interatomic distance (Å)	Clash overlap (Å)
2:B:327:ASN:ND2	2:B:330:ALA:HB2	2.31	0.46
2:B:394:ALA:O	2:B:398:TYR:N	2.46	0.46
1:A:592:GLN:HG3	1:A:638:GLN:HB3	1.98	0.46
1:A:346:SER:HA	1:A:351:MET:SD	2.56	0.46
1:A:534:ALA:HA	1:A:537:GLU:HG3	1.98	0.45
2:B:329:THR:C	2:B:331:ALA:N	2.69	0.45
1:A:379:GLU:O	1:A:382:PHE:HB3	2.17	0.45
1:A:392:LEU:HD11	1:A:415:VAL:CG2	2.47	0.45
1:A:435:VAL:HG23	1:A:436:LYS:H	1.81	0.45
2:B:361:GLU:O	2:B:364:ASP:HB2	2.16	0.45
2:B:406:SER:OG	2:B:412:LYS:O	2.30	0.45
1:A:446:ASN:OD1	2:B:359:LEU:HD11	2.17	0.44
1:A:720:ASP:O	1:A:724:VAL:HG23	2.17	0.44
1:A:352:GLU:HB2	1:A:568:ARG:HB3	1.98	0.44
2:B:385:THR:HA	2:B:388:GLN:HG3	1.98	0.44
1:A:419:GLN:HE22	2:B:315:PHE:H	1.65	0.44
1:A:613:THR:HG22	1:A:614:PHE:N	2.31	0.44
2:B:421:PHE:O	2:B:425:ARG:HB2	2.16	0.44
1:A:427:GLN:O	1:A:431:TRP:HD1	2.01	0.44
1:A:185:HIS:CE1	1:A:186:ASP:HB3	2.53	0.44
1:A:174:VAL:HG12	1:A:219:GLN:OE1	2.17	0.44
1:A:175:GLU:HG2	1:A:185:HIS:ND1	2.33	0.44
2:B:362:LYS:O	2:B:364:ASP:N	2.50	0.44
1:A:794:PRO:CD	1:A:828:GLN:NE2	2.75	0.43
1:A:214:ARG:HD2	1:A:215:ASN:OD1	2.18	0.43
1:A:412:LEU:HD13	1:A:533:PHE:CE1	2.53	0.43
1:A:563:SER:O	1:A:565:LEU:CD1	2.65	0.43
1:A:707:VAL:O	1:A:712:ALA:HB2	2.18	0.43
2:B:333:THR:HG22	2:B:334:VAL:N	2.33	0.43
1:A:465:ALA:HB1	1:A:479:LEU:HD23	2.00	0.43
1:A:587:ASN:HB3	1:A:607:THR:OG1	2.18	0.43
1:A:603:ILE:HG12	1:A:615:ILE:HD13	2.00	0.43
1:A:670:PHE:C	1:A:670:PHE:CD1	2.92	0.43
2:B:415:VAL:O	2:B:418:LYS:N	2.51	0.43
1:A:196:PHE:N	1:A:197:PRO:CD	2.81	0.43
1:A:331:ALA:HA	3:A:900:FAD:C4X	2.48	0.43
1:A:427:GLN:NE2	1:A:518:ASP:HA	2.34	0.43
1:A:506:GLU:C	1:A:508:LEU:H	2.22	0.43
1:A:707:VAL:HG12	1:A:712:ALA:HA	2.00	0.43
1:A:761:TYR:CE2	4:A:901:M80:H3B2	2.53	0.43
1:A:205:GLN:O	1:A:209:VAL:HG23	2.18	0.43

*Continued on next page...*

Continued from previous page...

Atom-1	Atom-2	Interatomic distance (Å)	Clash overlap (Å)
1:A:295:ARG:NH2	1:A:580:GLU:O	2.52	0.43
1:A:801:GLU:HG2	1:A:809:ALA:CA	2.47	0.43
1:A:541:ALA:HB2	1:A:761:TYR:CZ	2.54	0.42
1:A:728:LEU:O	1:A:729:ALA:C	2.57	0.42
1:A:761:TYR:CZ	4:A:901:M80:H3B2	2.53	0.42
1:A:270:ILE:O	1:A:272:PRO:HD3	2.19	0.42
1:A:640:VAL:O	1:A:640:VAL:HG12	2.19	0.42
1:A:677:LEU:HB2	1:A:693:LEU:HD11	2.01	0.42
1:A:761:TYR:CD1	1:A:809:ALA:HB1	2.54	0.42
1:A:640:VAL:HA	1:A:641:PRO:HA	1.89	0.42
1:A:535:ASN:HD22	1:A:535:ASN:HA	1.66	0.42
1:A:670:PHE:HD1	1:A:670:PHE:O	2.02	0.42
2:B:377:GLN:OE1	2:B:411:ASN:HB3	2.18	0.42
1:A:289:SER:HB3	1:A:814:ALA:HB1	2.01	0.42
1:A:297:LEU:HA	1:A:297:LEU:HD23	1.75	0.42
2:B:342:LEU:O	2:B:345:VAL:N	2.53	0.42
1:A:320:PHE:CD1	1:A:747:VAL:HG21	2.56	0.41
1:A:404:LYS:H	1:A:404:LYS:HG2	1.68	0.41
1:A:331:ALA:HA	3:A:900:FAD:N5	2.35	0.41
2:B:415:VAL:O	2:B:416:GLN:C	2.58	0.41
2:B:405:ILE:O	2:B:409:ILE:HG13	2.21	0.41
1:A:244:SER:OG	1:A:245:ASP:N	2.54	0.41
1:A:428:ILE:HG22	1:A:429:GLU:N	2.35	0.41
1:A:485:ARG:HD2	2:B:404:ALA:HA	2.02	0.41
1:A:786:ILE:HD12	1:A:786:ILE:H	1.86	0.41
2:B:380:ASN:O	2:B:416:GLN:NE2	2.51	0.41
1:A:451:LEU:HD12	1:A:451:LEU:HA	1.90	0.41
1:A:594:ARG:HA	1:A:640:VAL:O	2.21	0.40

There are no symmetry-related clashes.

## 5.3 Torsion angles [i](#)

### 5.3.1 Protein backbone [i](#)

In the following table, the Percentiles column shows the percent Ramachandran outliers of the chain as a percentile score with respect to all X-ray entries followed by that with respect to entries of similar resolution.

The Analysed column shows the number of residues for which the backbone conformation was analysed, and the total number of residues.

Mol	Chain	Analysed	Favoured	Allowed	Outliers	Percentiles	
1	A	664/852 (78%)	572 (86%)	75 (11%)	17 (3%)	5	31
2	B	131/482 (27%)	104 (79%)	20 (15%)	7 (5%)	2	15
All	All	795/1334 (60%)	676 (85%)	95 (12%)	24 (3%)	4	28

All (24) Ramachandran outliers are listed below:

Mol	Chain	Res	Type
1	A	729	ALA
1	A	793	ILE
1	A	468	VAL
1	A	486	ASP
1	A	737	SER
1	A	785	SER
1	A	801	GLU
2	B	341	GLU
2	B	363	LEU
1	A	274	PRO
1	A	369	ALA
1	A	425	ASP
1	A	507	LYS
2	B	326	ALA
2	B	331	ALA
2	B	373	PRO
2	B	439	ALA
1	A	733	GLY
1	A	499	GLU
2	B	429	ASN
1	A	287	GLY
1	A	508	LEU
1	A	428	ILE
1	A	313	VAL

### 5.3.2 Protein sidechains [i](#)

In the following table, the Percentiles column shows the percent sidechain outliers of the chain as a percentile score with respect to all X-ray entries followed by that with respect to entries of similar resolution.

The Analysed column shows the number of residues for which the sidechain conformation was analysed, and the total number of residues.

Mol	Chain	Analysed	Rotameric	Outliers	Percentiles	
1	A	566/699 (81%)	502 (89%)	64 (11%)	6	25
2	B	117/395 (30%)	98 (84%)	19 (16%)	2	11
All	All	683/1094 (62%)	600 (88%)	83 (12%)	5	22

All (83) residues with a non-rotameric sidechain are listed below:

Mol	Chain	Res	Type
1	A	206	THR
1	A	237	GLN
1	A	247	VAL
1	A	255	TYR
1	A	271	LYS
1	A	274	PRO
1	A	276	LYS
1	A	277	LYS
1	A	281	VAL
1	A	296	GLN
1	A	299	SER
1	A	332	MET
1	A	351	MET
1	A	359	LYS
1	A	373	GLU
1	A	380	GLN
1	A	392	LEU
1	A	402	ASN
1	A	404	LYS
1	A	418	LEU
1	A	429	GLU
1	A	432	LYS
1	A	437	THR
1	A	438	GLN
1	A	453	GLU
1	A	457	GLU
1	A	458	LEU
1	A	467	GLU
1	A	469	LYS
1	A	479	LEU
1	A	482	SER
1	A	492	LYS
1	A	512	GLU
1	A	514	ASN
1	A	524	ARG

*Continued on next page...*



*Continued from previous page...*

<b>Mol</b>	<b>Chain</b>	<b>Res</b>	<b>Type</b>
1	A	526	ARG
1	A	535	ASN
1	A	537	GLU
1	A	556	ASP
1	A	563	SER
1	A	568	ARG
1	A	571	TYR
1	A	612	GLN
1	A	624	THR
1	A	632	GLN
1	A	633	GLN
1	A	638	GLN
1	A	645	GLU
1	A	652	GLN
1	A	668	ARG
1	A	675	VAL
1	A	677	LEU
1	A	680	HIS
1	A	684	THR
1	A	699	LYS
1	A	706	LEU
1	A	727	CYS
1	A	737	SER
1	A	744	LYS
1	A	778	GLN
1	A	785	SER
1	A	786	ILE
1	A	793	ILE
1	A	815	LEU
2	B	308	ARG
2	B	312	LYS
2	B	332	THR
2	B	336	ARG
2	B	337	GLN
2	B	342	LEU
2	B	344	SER
2	B	347	ARG
2	B	349	ILE
2	B	351	ASN
2	B	361	GLU
2	B	370	TYR
2	B	371	ARG

*Continued on next page...*

*Continued from previous page...*

Mol	Chain	Res	Type
2	B	375	VAL
2	B	379	CYS
2	B	382	ARG
2	B	385	THR
2	B	422	VAL
2	B	423	ASN

Sometimes sidechains can be flipped to improve hydrogen bonding and reduce clashes. All (11) such sidechains are listed below:

Mol	Chain	Res	Type
1	A	237	GLN
1	A	422	HIS
1	A	427	GLN
1	A	438	GLN
1	A	535	ASN
1	A	606	ASN
1	A	828	GLN
2	B	337	GLN
2	B	348	GLN
2	B	388	GLN
2	B	419	ASN

### 5.3.3 RNA [i](#)

There are no RNA molecules in this entry.

### 5.4 Non-standard residues in protein, DNA, RNA chains [i](#)

There are no non-standard protein/DNA/RNA residues in this entry.

### 5.5 Carbohydrates [i](#)

There are no monosaccharides in this entry.

### 5.6 Ligand geometry [i](#)

2 ligands are modelled in this entry.

In the following table, the Counts columns list the number of bonds (or angles) for which Mogul statistics could be retrieved, the number of bonds (or angles) that are observed in the model and the number of bonds (or angles) that are defined in the Chemical Component Dictionary. The Link column lists molecule types, if any, to which the group is linked. The Z score for a bond length (or angle) is the number of standard deviations the observed value is removed from the expected value. A bond length (or angle) with  $|Z| > 2$  is considered an outlier worth inspection. RMSZ is the root-mean-square of all Z scores of the bond lengths (or angles).

Mol	Type	Chain	Res	Link	Bond lengths			Bond angles		
					Counts	RMSZ	# Z  > 2	Counts	RMSZ	# Z  > 2
4	M80	A	901	3	34,34,35	1.52	1 (2%)	43,43,45	1.72	10 (23%)
3	FAD	A	900	4	53,58,58	2.41	9 (16%)	68,89,89	1.84	15 (22%)

In the following table, the Chirals column lists the number of chiral outliers, the number of chiral centers analysed, the number of these observed in the model and the number defined in the Chemical Component Dictionary. Similar counts are reported in the Torsion and Rings columns. '-' means no outliers of that kind were identified.

Mol	Type	Chain	Res	Link	Chirals	Torsions	Rings
4	M80	A	901	3	-	9/24/25/26	0/3/3/3
3	FAD	A	900	4	-	3/30/50/50	0/6/6/6

All (10) bond length outliers are listed below:

Mol	Chain	Res	Type	Atoms	Z	Observed(Å)	Ideal(Å)
3	A	900	FAD	C2A-N3A	8.86	1.46	1.32
3	A	900	FAD	C2A-N1A	7.90	1.48	1.33
4	A	901	M80	OY2-CY	7.80	1.50	1.35
3	A	900	FAD	O4-C4	6.86	1.36	1.23
3	A	900	FAD	O2-C2	6.64	1.36	1.24
3	A	900	FAD	C4X-N5	4.94	1.40	1.30
3	A	900	FAD	C2B-C1B	-2.58	1.49	1.53
3	A	900	FAD	C10-N10	2.55	1.42	1.37
3	A	900	FAD	C5'-C4'	2.23	1.54	1.51
3	A	900	FAD	C4-N3	-2.11	1.34	1.38

All (25) bond angle outliers are listed below:

Mol	Chain	Res	Type	Atoms	Z	Observed(°)	Ideal(°)
3	A	900	FAD	N3A-C2A-N1A	-9.45	113.91	128.68
4	A	901	M80	OY2-CY-NW	6.00	122.69	110.50
4	A	901	M80	CZ-OY2-CY	4.52	126.01	115.93
4	A	901	M80	OY1-CY-NW	-3.97	118.35	124.85

*Continued on next page...*

Continued from previous page...

Mol	Chain	Res	Type	Atoms	Z	Observed(°)	Ideal(°)
3	A	900	FAD	C9A-N10-C10	-3.51	115.30	120.77
3	A	900	FAD	C4X-C10-N1	-3.47	116.67	124.73
3	A	900	FAD	C1B-N9A-C4A	-3.05	121.28	126.64
3	A	900	FAD	O4-C4-C4X	-2.90	118.89	126.60
4	A	901	M80	OY2-CY-OY1	-2.76	118.95	124.25
3	A	900	FAD	C4X-C4-N3	2.52	119.59	113.19
4	A	901	M80	OY2-CZ-CZ1	2.50	115.41	109.39
3	A	900	FAD	P-O3P-PA	-2.50	124.25	132.83
3	A	900	FAD	C2A-N1A-C6A	2.48	123.00	118.75
3	A	900	FAD	C4-N3-C2	-2.47	121.08	125.64
3	A	900	FAD	O4B-C1B-C2B	-2.40	103.42	106.93
4	A	901	M80	CW-NW-CY	2.36	126.66	120.90
4	A	901	M80	C2B-C3B-CB1	-2.35	107.20	113.18
3	A	900	FAD	N10-C10-N1	2.32	125.02	118.35
4	A	901	M80	CW2-CW1-CW	2.32	119.78	113.39
3	A	900	FAD	C5X-C9A-N10	2.21	120.24	117.95
4	A	901	M80	CB4-NB4-C4B	-2.16	122.22	127.40
4	A	901	M80	CW1-CW-C4B	-2.10	104.81	110.25
3	A	900	FAD	O5'-C5'-C4'	2.06	114.86	109.36
3	A	900	FAD	O4'-C4'-C5'	2.01	114.42	109.92
3	A	900	FAD	O2A-PA-O1A	2.00	122.14	112.24

There are no chirality outliers.

All (12) torsion outliers are listed below:

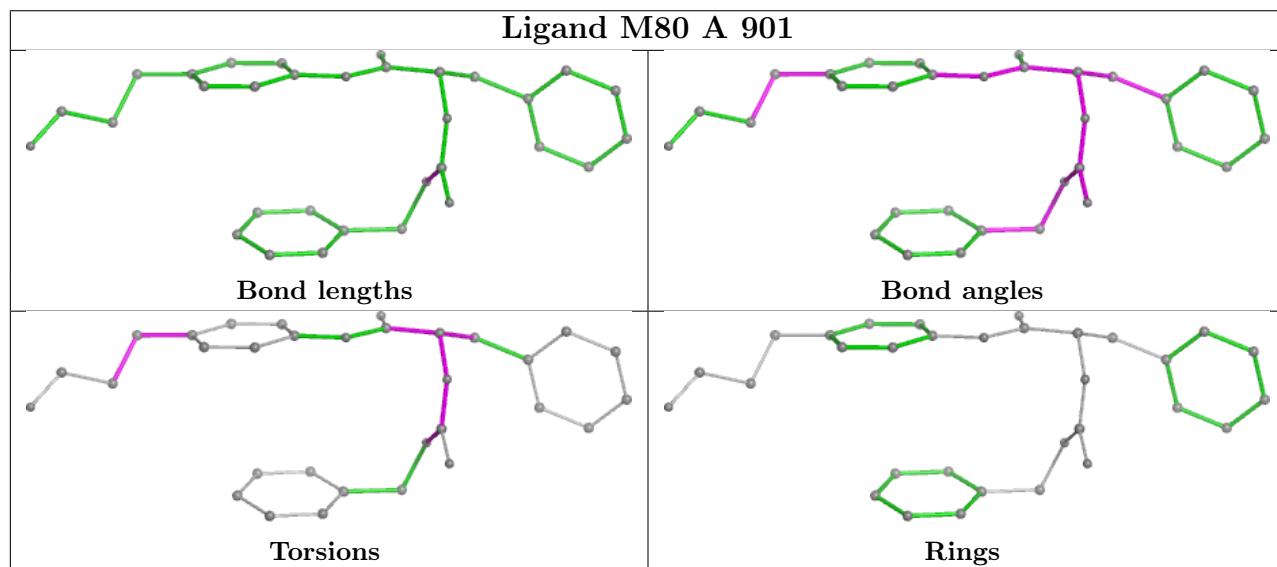
Mol	Chain	Res	Type	Atoms
4	A	901	M80	CW1-CW-NW-CY
3	A	900	FAD	C2'-C1'-N10-C10
3	A	900	FAD	PA-O3P-P-O5'
4	A	901	M80	OY2-CY-NW-CW
4	A	901	M80	OY1-CY-NW-CW
4	A	901	M80	OY1-CY-OY2-CZ
4	A	901	M80	NW-CY-OY2-CZ
4	A	901	M80	O4B-C4B-CW-CW1
3	A	900	FAD	O4B-C4B-C5B-O5B
4	A	901	M80	NW-CW-CW1-CW2
4	A	901	M80	C2B-C3B-CB1-CB6
4	A	901	M80	C1B-C2B-C3B-CB1

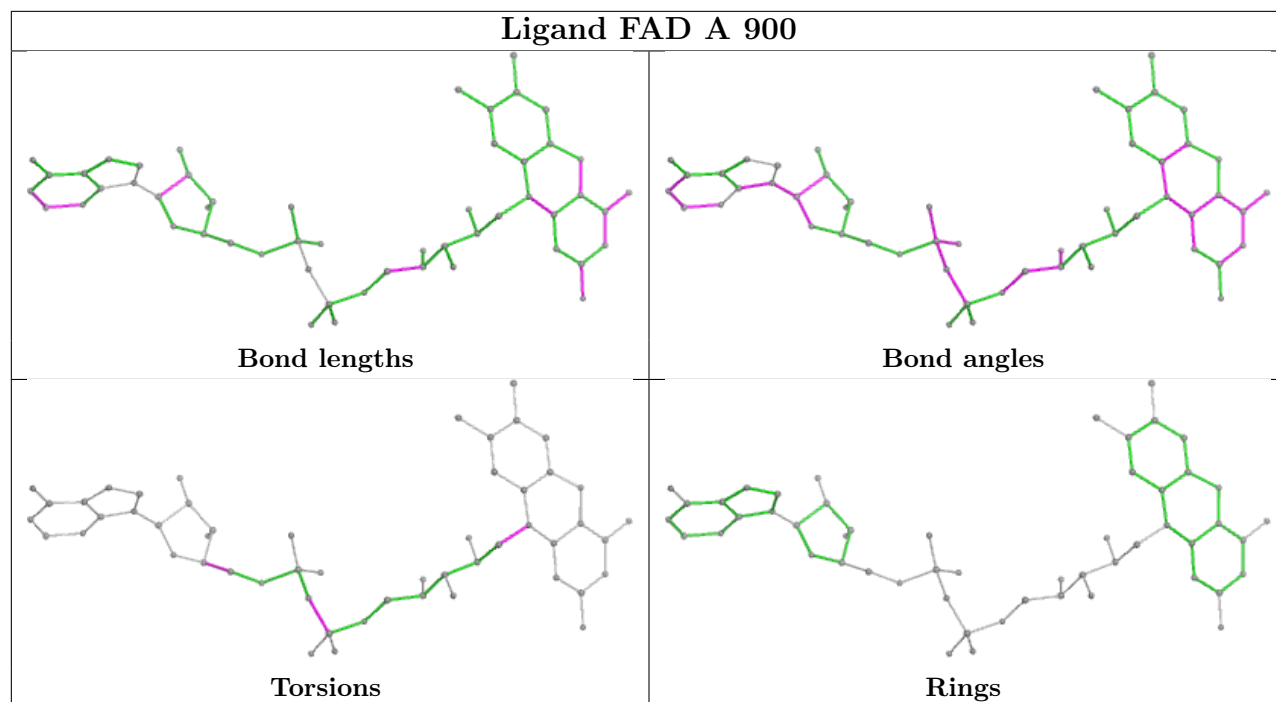
There are no ring outliers.

2 monomers are involved in 10 short contacts:

Mol	Chain	Res	Type	Clashes	Symm-Clashes
4	A	901	M80	8	0
3	A	900	FAD	6	0

The following is a two-dimensional graphical depiction of Mogul quality analysis of bond lengths, bond angles, torsion angles, and ring geometry for all instances of the Ligand of Interest. In addition, ligands with molecular weight > 250 and outliers as shown on the validation Tables will also be included. For torsion angles, if less than 5% of the Mogul distribution of torsion angles is within 10 degrees of the torsion angle in question, then that torsion angle is considered an outlier. Any bond that is central to one or more torsion angles identified as an outlier by Mogul will be highlighted in the graph. For rings, the root-mean-square deviation (RMSD) between the ring in question and similar rings identified by Mogul is calculated over all ring torsion angles. If the average RMSD is greater than 60 degrees and the minimal RMSD between the ring in question and any Mogul-identified rings is also greater than 60 degrees, then that ring is considered an outlier. The outliers are highlighted in purple. The color gray indicates Mogul did not find sufficient equivalents in the CSD to analyse the geometry.





## 5.7 Other polymers [i](#)

There are no such residues in this entry.

## 5.8 Polymer linkage issues [i](#)

There are no chain breaks in this entry.

## 6 Fit of model and data [i](#)

### 6.1 Protein, DNA and RNA chains [i](#)

In the following table, the column labelled '#RSRZ > 2' contains the number (and percentage) of RSRZ outliers, followed by percent RSRZ outliers for the chain as percentile scores relative to all X-ray entries and entries of similar resolution. The OWAB column contains the minimum, median, 95<sup>th</sup> percentile and maximum values of the occupancy-weighted average B-factor per residue. The column labelled 'Q < 0.9' lists the number of (and percentage) of residues with an average occupancy less than 0.9.

Mol	Chain	Analysed	<RSRZ>	#RSRZ>2	OWAB(Å <sup>2</sup> )	Q<0.9
1	A	666/852 (78%)	0.10	5 (0%) 86 78	38, 70, 100, 113	0
2	B	133/482 (27%)	0.34	1 (0%) 86 78	68, 100, 114, 122	0
All	All	799/1334 (59%)	0.14	6 (0%) 86 78	38, 74, 108, 122	0

All (6) RSRZ outliers are listed below:

Mol	Chain	Res	Type	RSRZ
1	A	171	PRO	2.8
1	A	403	ASN	2.8
1	A	275	THR	2.3
1	A	270	ILE	2.3
2	B	308	ARG	2.2
1	A	509	GLN	2.1

### 6.2 Non-standard residues in protein, DNA, RNA chains [i](#)

There are no non-standard protein/DNA/RNA residues in this entry.

### 6.3 Carbohydrates [i](#)

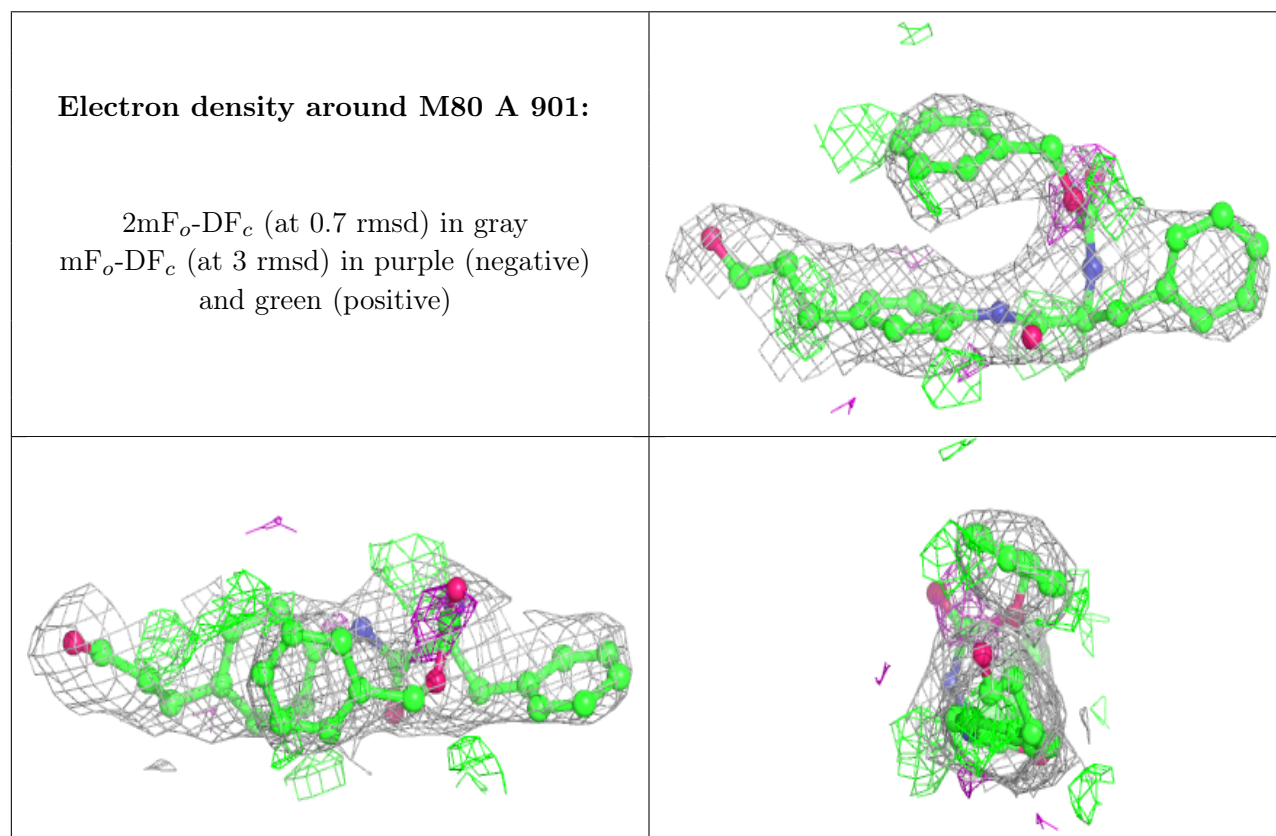
There are no monosaccharides in this entry.

### 6.4 Ligands [i](#)

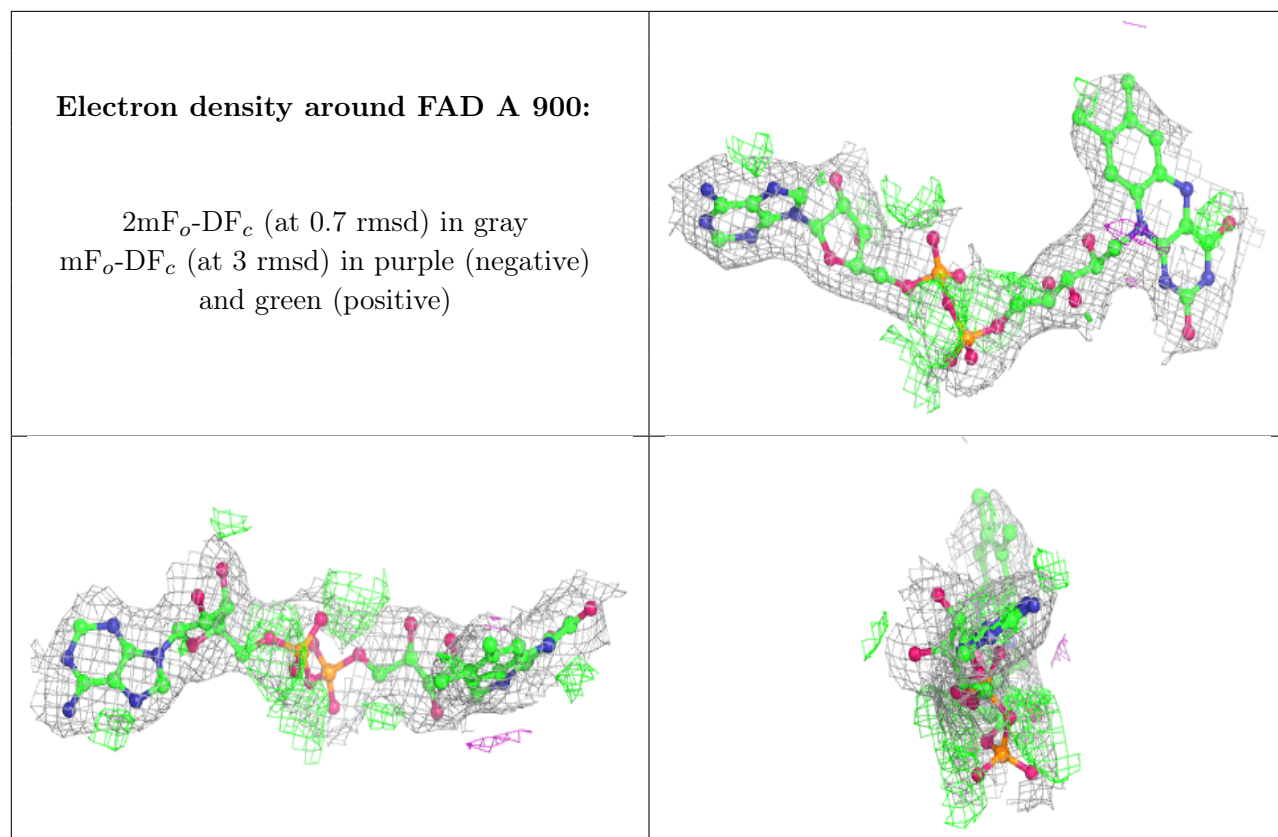
In the following table, the Atoms column lists the number of modelled atoms in the group and the number defined in the chemical component dictionary. The B-factors column lists the minimum, median, 95<sup>th</sup> percentile and maximum values of B factors of atoms in the group. The column labelled 'Q < 0.9' lists the number of atoms with occupancy less than 0.9.

Mol	Type	Chain	Res	Atoms	RSCC	RSR	B-factors( $\text{\AA}^2$ )	Q<0.9
4	M80	A	901	32/33	0.92	0.39	66,101,105,108	0
3	FAD	A	900	53/53	0.99	0.23	37,45,63,64	0

The following is a graphical depiction of the model fit to experimental electron density of all instances of the Ligand of Interest. In addition, ligands with molecular weight > 250 and outliers as shown on the geometry validation Tables will also be included. Each fit is shown from different orientation to approximate a three-dimensional view.







## 6.5 Other polymers [i](#)

There are no such residues in this entry.