



# Full wwPDB X-ray Structure Validation Report ⓘ

Apr 27, 2024 – 02:23 pm BST

PDB ID : 2W1A  
Title : Non-covalent complex between dahp synthase and chorismate mutase from Mycobacterium tuberculosis with bound tsa  
Authors : Okvist, M.; Sasso, S.; Roderer, K.; Gamper, M.; Codoni, G.; Kregel, U.; Kast, P.  
Deposited on : 2008-10-16  
Resolution : 2.35 Å(reported)

This is a Full wwPDB X-ray Structure Validation Report for a publicly released PDB entry.

We welcome your comments at [validation@mail.wwpdb.org](mailto:validation@mail.wwpdb.org)

A user guide is available at

<https://www.wwpdb.org/validation/2017/XrayValidationReportHelp>

with specific help available everywhere you see the ⓘ symbol.

The types of validation reports are described at

<http://www.wwpdb.org/validation/2017/FAQs#types>.

---

The following versions of software and data (see [references ⓘ](#)) were used in the production of this report:

MolProbity : 4.02b-467  
Mogul : 1.8.4, CSD as541be (2020)  
Xtrriage (Phenix) : 1.13  
EDS : 2.36.2  
buster-report : 1.1.7 (2018)  
Percentile statistics : 20191225.v01 (using entries in the PDB archive December 25th 2019)  
Refmac : 5.8.0158  
CCP4 : 7.0.044 (Gargrove)  
Ideal geometry (proteins) : Engh & Huber (2001)  
Ideal geometry (DNA, RNA) : Parkinson et al. (1996)  
Validation Pipeline (wwPDB-VP) : 2.36.2

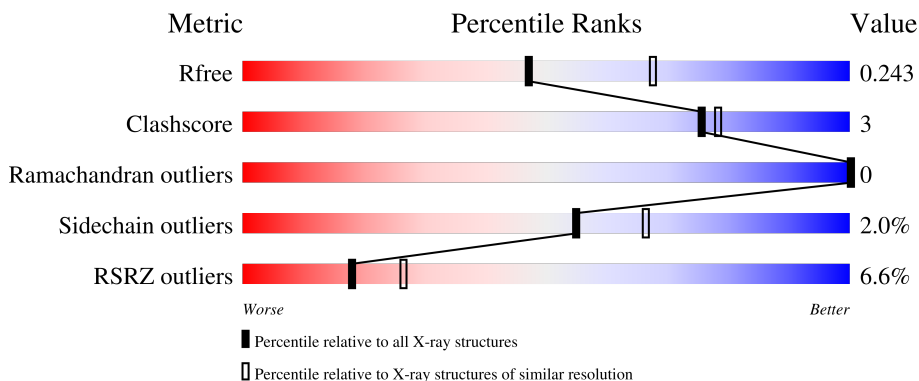
# 1 Overall quality at a glance

The following experimental techniques were used to determine the structure:

*X-RAY DIFFRACTION*

The reported resolution of this entry is 2.35 Å.

Percentile scores (ranging between 0-100) for global validation metrics of the entry are shown in the following graphic. The table shows the number of entries on which the scores are based.



Metric	Whole archive (#Entries)	Similar resolution (#Entries, resolution range(Å))
$R_{free}$	130704	1164 (2.36-2.36)
Clashscore	141614	1232 (2.36-2.36)
Ramachandran outliers	138981	1211 (2.36-2.36)
Sidechain outliers	138945	1212 (2.36-2.36)
RSRZ outliers	127900	1150 (2.36-2.36)

The table below summarises the geometric issues observed across the polymeric chains and their fit to the electron density. The red, orange, yellow and green segments of the lower bar indicate the fraction of residues that contain outliers for  $\geq 3$ , 2, 1 and 0 types of geometric quality criteria respectively. A grey segment represents the fraction of residues that are not modelled. The numeric value for each fraction is indicated below the corresponding segment, with a dot representing fractions  $\leq 5\%$ . The upper red bar (where present) indicates the fraction of residues that have poor fit to the electron density. The numeric value is given above the bar.

Mol	Chain	Length	Quality of chain
1	A	472	 4% 87% 9%
1	B	472	 6% 88% 7% 5%
2	C	90	 14% 86% 13%
2	D	90	 10% 87% 12%

## 2 Entry composition

There are 9 unique types of molecules in this entry. The entry contains 8446 atoms, of which 0 are hydrogens and 0 are deuteriums.

In the tables below, the ZeroOcc column contains the number of atoms modelled with zero occupancy, the AltConf column contains the number of residues with at least one atom in alternate conformation and the Trace column contains the number of residues modelled with at most 2 atoms.

- Molecule 1 is a protein called 3-DEOXY-D-ARABINO-HEPTULOSONATE 7-PHOSPHATE SYNTHASE AROG.

Mol	Chain	Residues	Atoms					ZeroOcc	AltConf	Trace
			Total	C	N	O	S			
1	A	451	Total 3466	C 2166	N 628	O 655	S 17	0	0	0
1	B	449	Total 3454	C 2160	N 626	O 651	S 17	0	0	0

- Molecule 2 is a protein called CHORISMATE MUTASE.

Mol	Chain	Residues	Atoms					ZeroOcc	AltConf	Trace
			Total	C	N	O	S			
2	C	78	Total 597	C 370	N 117	O 108	S 2	0	0	0
2	D	79	Total 610	C 378	N 121	O 109	S 2	0	0	0

- Molecule 3 is MANGANESE (II) ION (three-letter code: MN) (formula: Mn).

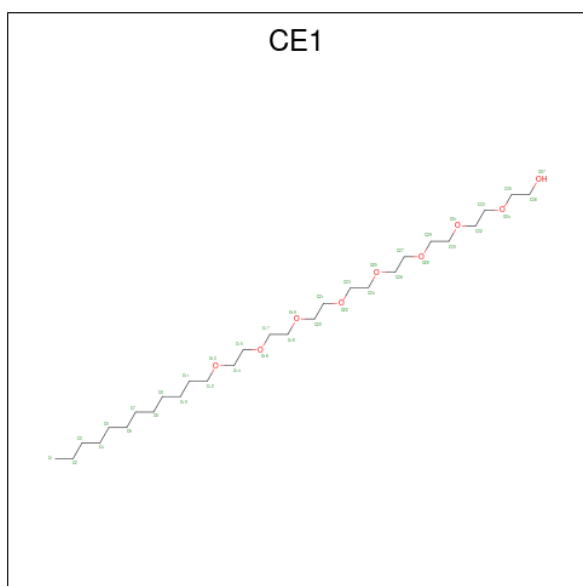
Mol	Chain	Residues	Atoms		ZeroOcc	AltConf
3	A	1	Total 1	Mn 1	0	0
3	B	1	Total 1	Mn 1	0	0

- Molecule 4 is SULFATE ION (three-letter code: SO4) (formula: O<sub>4</sub>S).



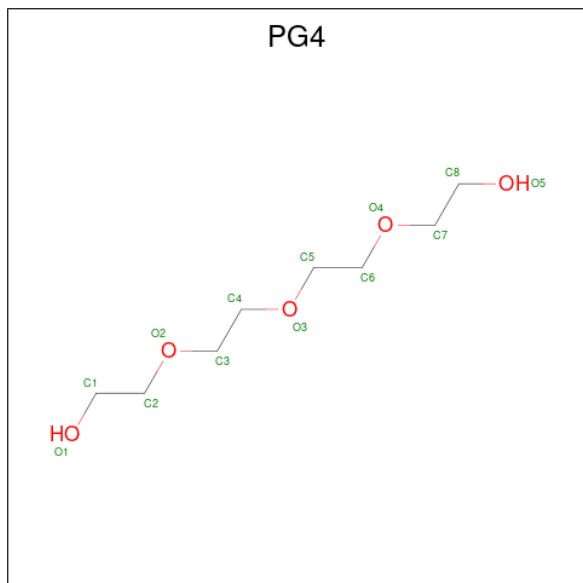
Mol	Chain	Residues	Atoms	ZeroOcc	AltConf
4	A	1	Total O S 5 4 1	0	0
4	B	1	Total O S 5 4 1	0	0
4	B	1	Total O S 5 4 1	0	0

- Molecule 5 is O-DODECANYL OCTAETHYLENE GLYCOL (three-letter code: CE1) (formula:  $C_{28}H_{58}O_9$ ).



Mol	Chain	Residues	Atoms			ZeroOcc	AltConf
5	A	1	Total	C	O	0	0
			25	20	5		

- Molecule 6 is TETRAETHYLENE GLYCOL (three-letter code: PG4) (formula:  $C_8H_{18}O_5$ ).



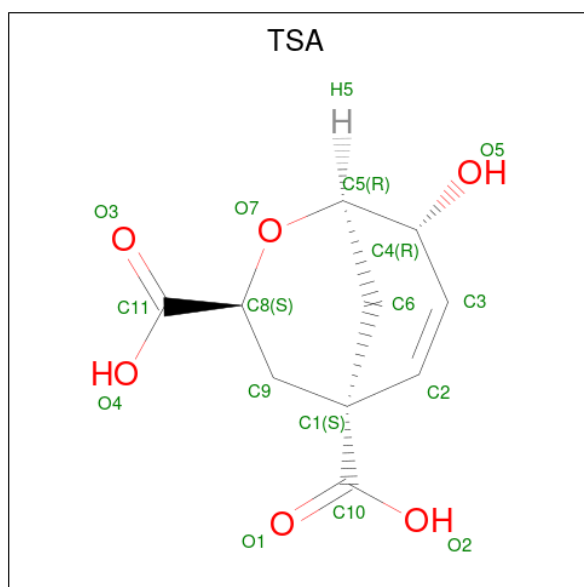
Mol	Chain	Residues	Atoms			ZeroOcc	AltConf
6	A	1	Total	C	O	0	0
			13	8	5		

- Molecule 7 is GLYCEROL (three-letter code: GOL) (formula:  $C_3H_8O_3$ ).



Mol	Chain	Residues	Atoms	ZeroOcc	AltConf
7	A	1	Total C O 6 3 3	0	0
7	B	1	Total C O 6 3 3	0	0
7	B	1	Total C O 6 3 3	0	0

- Molecule 8 is 8-HYDROXY-2-OXA-BICYCLO[3.3.1]NON-6-ENE-3,5-DICARBOXYLIC ACID (three-letter code: TSA) (formula: C<sub>10</sub>H<sub>12</sub>O<sub>6</sub>).



Mol	Chain	Residues	Atoms	ZeroOcc	AltConf
8	C	1	Total C O 16 10 6	0	0
8	D	1	Total C O 16 10 6	0	0

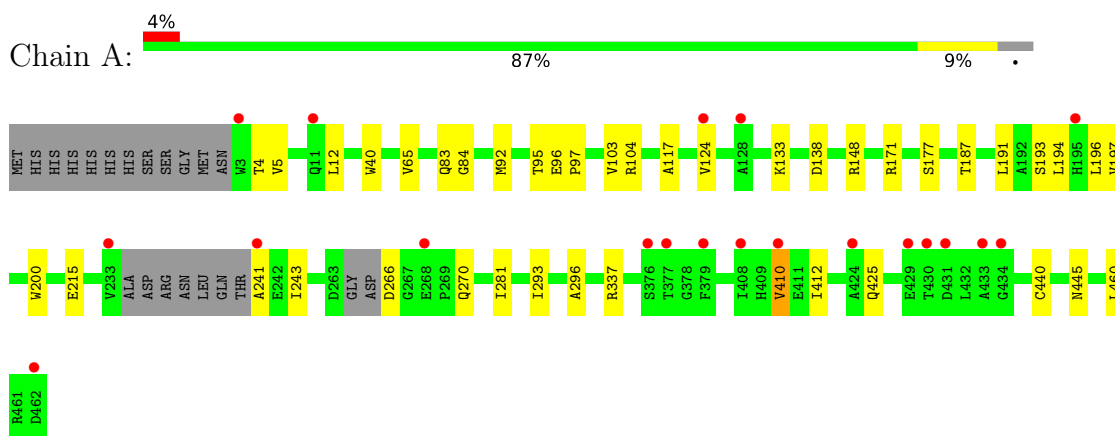
- Molecule 9 is water.

Mol	Chain	Residues	Atoms	ZeroOcc	AltConf
9	A	94	Total O 94 94	0	0
9	B	105	Total O 105 105	0	0
9	C	6	Total O 6 6	0	0
9	D	9	Total O 9 9	0	0

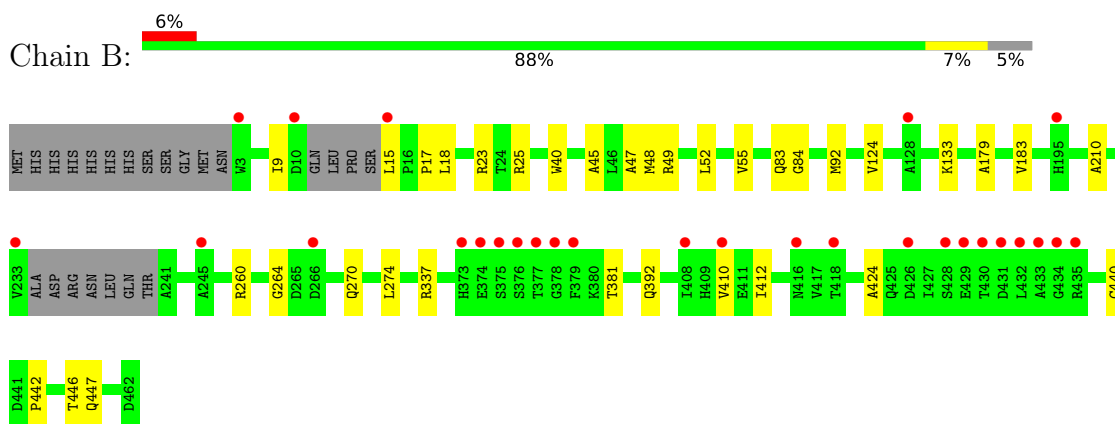
### 3 Residue-property plots [i](#)

These plots are drawn for all protein, RNA, DNA and oligosaccharide chains in the entry. The first graphic for a chain summarises the proportions of the various outlier classes displayed in the second graphic. The second graphic shows the sequence view annotated by issues in geometry and electron density. Residues are color-coded according to the number of geometric quality criteria for which they contain at least one outlier: green = 0, yellow = 1, orange = 2 and red = 3 or more. A red dot above a residue indicates a poor fit to the electron density ( $RSRZ > 2$ ). Stretches of 2 or more consecutive residues without any outlier are shown as a green connector. Residues present in the sample, but not in the model, are shown in grey.

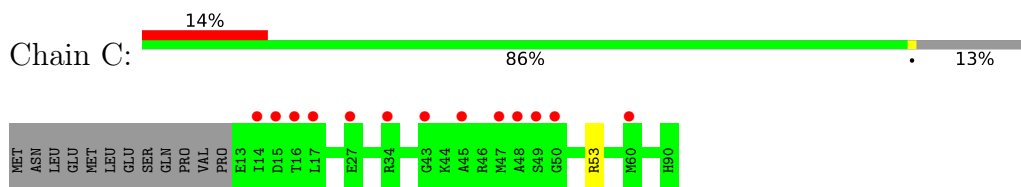
- Molecule 1: 3-DEOXY-D-ARABINO-HEPTULOSONATE 7-PHOSPHATE SYNTHASE AROG



- Molecule 1: 3-DEOXY-D-ARABINO-HEPTULOSONATE 7-PHOSPHATE SYNTHASE AROG

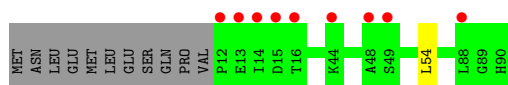


- Molecule 2: CHORISMATE MUTASE



- Molecule 2: CHORISMATE MUTASE

Chain D: 10% 87% 12%





## 4 Data and refinement statistics i

Property	Value	Source
Space group	P 32 2 1	Depositor
Cell constants a, b, c, $\alpha$ , $\beta$ , $\gamma$	205.91Å 205.91Å 67.24Å 90.00° 90.00° 120.00°	Depositor
Resolution (Å)	39.84 – 2.35 39.84 – 2.35	Depositor EDS
% Data completeness (in resolution range)	98.7 (39.84-2.35) 95.2 (39.84-2.35)	Depositor EDS
$R_{merge}$	0.10	Depositor
$R_{sym}$	(Not available)	Depositor
$\langle I/\sigma(I) \rangle$ <sup>1</sup>	2.45 (at 2.34Å)	Xtrriage
Refinement program	REFMAC 5.2.0019	Depositor
R, $R_{free}$	0.191 , 0.229 0.208 , 0.243	Depositor DCC
$R_{free}$ test set	3291 reflections (5.08%)	wwPDB-VP
Wilson B-factor (Å <sup>2</sup> )	28.3	Xtrriage
Anisotropy	0.132	Xtrriage
Bulk solvent $k_{sol}$ (e/Å <sup>3</sup> ), $B_{sol}$ (Å <sup>2</sup> )	0.36 , 39.7	EDS
L-test for twinning <sup>2</sup>	$\langle  L  \rangle = 0.49$ , $\langle L^2 \rangle = 0.32$	Xtrriage
Estimated twinning fraction	0.028 for -h,-k,l	Xtrriage
$F_o, F_c$ correlation	0.93	EDS
Total number of atoms	8446	wwPDB-VP
Average B, all atoms (Å <sup>2</sup> )	30.0	wwPDB-VP

Xtrriage's analysis on translational NCS is as follows: *The largest off-origin peak in the Patterson function is 2.97% of the height of the origin peak. No significant pseudotranslation is detected.*

<sup>1</sup>Intensities estimated from amplitudes.

<sup>2</sup>Theoretical values of  $\langle |L| \rangle$ ,  $\langle L^2 \rangle$  for acentric reflections are 0.5, 0.333 respectively for untwinned datasets, and 0.375, 0.2 for perfectly twinned datasets.

## 5 Model quality [i](#)

### 5.1 Standard geometry [i](#)

Bond lengths and bond angles in the following residue types are not validated in this section: GOL, TSA, PG4, MN, CE1, SO4

The Z score for a bond length (or angle) is the number of standard deviations the observed value is removed from the expected value. A bond length (or angle) with  $|Z| > 5$  is considered an outlier worth inspection. RMSZ is the root-mean-square of all Z scores of the bond lengths (or angles).

Mol	Chain	Bond lengths		Bond angles	
		RMSZ	# Z  >5	RMSZ	# Z  >5
1	A	0.44	0/3536	0.59	0/4809
1	B	0.47	0/3525	0.61	1/4794 (0.0%)
2	C	0.36	0/600	0.54	0/799
2	D	0.38	0/614	0.60	0/817
All	All	0.44	0/8275	0.60	1/11219 (0.0%)

There are no bond length outliers.

All (1) bond angle outliers are listed below:

Mol	Chain	Res	Type	Atoms	Z	Observed(°)	Ideal(°)
1	B	25	ARG	NE-CZ-NH1	5.74	123.17	120.30

There are no chirality outliers.

There are no planarity outliers.

### 5.2 Too-close contacts [i](#)

In the following table, the Non-H and H(model) columns list the number of non-hydrogen atoms and hydrogen atoms in the chain respectively. The H(added) column lists the number of hydrogen atoms added and optimized by MolProbity. The Clashes column lists the number of clashes within the asymmetric unit, whereas Symm-Clashes lists symmetry-related clashes.

Mol	Chain	Non-H	H(model)	H(added)	Clashes	Symm-Clashes
1	A	3466	0	3422	26	0
1	B	3454	0	3404	26	0
2	C	597	0	631	0	0
2	D	610	0	650	2	0
3	A	1	0	0	0	0
3	B	1	0	0	0	0

*Continued on next page...*

*Continued from previous page...*

Mol	Chain	Non-H	H(model)	H(added)	Clashes	Symm-Clashes
4	A	5	0	0	0	0
4	B	10	0	0	0	0
5	A	25	0	41	4	0
6	A	13	0	18	4	0
7	A	6	0	8	1	0
7	B	12	0	16	3	0
8	C	16	0	10	0	0
8	D	16	0	10	0	0
9	A	94	0	0	1	0
9	B	105	0	0	0	0
9	C	6	0	0	0	0
9	D	9	0	0	0	0
All	All	8446	0	8210	51	0

The all-atom clashscore is defined as the number of clashes found per 1000 atoms (including hydrogen atoms). The all-atom clashscore for this structure is 3.

All (51) close contacts within the same asymmetric unit are listed below, sorted by their clash magnitude.

Atom-1	Atom-2	Interatomic distance (Å)	Clash overlap (Å)
1:B:264:GLY:HA3	1:B:270:GLN:HE21	1.39	0.86
1:B:410:VAL:HG12	1:B:412:ILE:HG23	1.69	0.72
1:B:23:ARG:HE	7:B:1467:GOL:H2	1.56	0.71
1:A:410:VAL:HG13	1:A:412:ILE:HG23	1.73	0.70
1:A:187:THR:O	1:A:241:ALA:HB1	1.93	0.68
1:A:281:ILE:HD13	1:A:293:ILE:HD13	1.81	0.63
5:A:1465:CE1:H112	5:A:1465:CE1:H151	1.80	0.62
1:B:18:LEU:N	7:B:1467:GOL:O2	2.32	0.59
1:B:17:PRO:HA	7:B:1467:GOL:O2	2.04	0.57
1:A:133:LYS:NZ	1:A:440:CYS:SG	2.65	0.56
1:A:425:GLN:HE22	1:A:445:ASN:HD21	1.53	0.56
1:A:117:ALA:HB2	1:A:460:LEU:HD13	1.89	0.54
5:A:1465:CE1:H112	5:A:1465:CE1:C15	2.38	0.54
1:A:5:VAL:HG11	1:B:48:MET:CE	2.38	0.53
1:A:197:VAL:HG21	9:A:2059:HOH:O	2.08	0.53
1:A:5:VAL:HB	1:B:48:MET:HE3	1.92	0.51
1:B:392:GLN:HE22	2:D:54:LEU:CD1	2.24	0.51
1:B:83:GLN:HA	1:B:124:VAL:O	2.10	0.51
1:B:210:ALA:HB3	1:B:424:ALA:HB2	1.93	0.49
1:B:392:GLN:HE22	2:D:54:LEU:HD11	1.77	0.49
1:A:193:SER:O	1:A:197:VAL:HG23	2.13	0.48

*Continued on next page...*

Continued from previous page...

Atom-1	Atom-2	Interatomic distance (Å)	Clash overlap (Å)
1:B:9:ILE:HD11	1:B:47:ALA:HB1	1.95	0.48
1:B:133:LYS:NZ	1:B:440:CYS:SG	2.73	0.48
1:B:410:VAL:CG1	1:B:412:ILE:HG23	2.43	0.48
1:A:281:ILE:HD11	1:A:296:ALA:HB2	1.96	0.47
1:A:191:LEU:HD23	1:A:200:TRP:HH2	1.78	0.47
1:A:92:MET:N	6:A:1466:PG4:H32	2.30	0.47
1:A:148:ARG:HD3	7:A:1467:GOL:C3	2.45	0.47
1:B:52:LEU:O	1:B:55:VAL:HG22	2.15	0.46
6:A:1466:PG4:C3	6:A:1466:PG4:H82	2.45	0.46
1:A:96:GLU:HB3	1:A:97:PRO:HD3	1.99	0.45
1:B:260:ARG:HG3	1:B:274:LEU:HD12	1.98	0.45
1:A:410:VAL:HG13	1:A:412:ILE:CG2	2.43	0.45
6:A:1466:PG4:H82	6:A:1466:PG4:O2	2.16	0.45
1:B:84:GLY:HA2	1:B:410:VAL:O	2.17	0.45
1:B:264:GLY:HA3	1:B:270:GLN:NE2	2.20	0.45
1:A:103:VAL:HG13	1:A:243:ILE:HD12	1.99	0.44
1:A:5:VAL:HG21	1:B:48:MET:HE1	1.98	0.44
1:A:83:GLN:HA	1:A:124:VAL:O	2.17	0.43
1:A:92:MET:H	6:A:1466:PG4:H32	1.84	0.42
1:A:12:LEU:HD22	1:B:92:MET:HA	2.00	0.42
1:A:171:ARG:HH21	5:A:1465:CE1:H171	1.84	0.42
1:A:95:THR:HG22	5:A:1465:CE1:H231	2.01	0.42
1:B:381:THR:HA	1:B:442:PRO:HG3	2.01	0.42
1:A:5:VAL:CB	1:B:48:MET:HE3	2.50	0.41
1:B:45:ALA:O	1:B:49:ARG:HG3	2.21	0.41
1:B:410:VAL:HG12	1:B:412:ILE:CG2	2.45	0.41
1:A:191:LEU:CD2	1:A:200:TRP:HH2	2.34	0.41
1:A:84:GLY:HA2	1:A:410:VAL:O	2.21	0.40
1:B:446:THR:HG23	1:B:447:GLN:H	1.86	0.40
1:B:179:ALA:O	1:B:183:VAL:HG13	2.22	0.40

There are no symmetry-related clashes.

## 5.3 Torsion angles [i](#)

### 5.3.1 Protein backbone [i](#)

In the following table, the Percentiles column shows the percent Ramachandran outliers of the chain as a percentile score with respect to all X-ray entries followed by that with respect to entries of similar resolution.

The Analysed column shows the number of residues for which the backbone conformation was analysed, and the total number of residues.

Mol	Chain	Analysed	Favoured	Allowed	Outliers	Percentiles	
1	A	445/472 (94%)	434 (98%)	11 (2%)	0	100	100
1	B	443/472 (94%)	431 (97%)	12 (3%)	0	100	100
2	C	76/90 (84%)	75 (99%)	1 (1%)	0	100	100
2	D	77/90 (86%)	77 (100%)	0	0	100	100
All	All	1041/1124 (93%)	1017 (98%)	24 (2%)	0	100	100

There are no Ramachandran outliers to report.

### 5.3.2 Protein sidechains [i](#)

In the following table, the Percentiles column shows the percent sidechain outliers of the chain as a percentile score with respect to all X-ray entries followed by that with respect to entries of similar resolution.

The Analysed column shows the number of residues for which the sidechain conformation was analysed, and the total number of residues.

Mol	Chain	Analysed	Rotameric	Outliers	Percentiles	
1	A	366/385 (95%)	353 (96%)	13 (4%)	35	43
1	B	363/385 (94%)	360 (99%)	3 (1%)	81	89
2	C	60/75 (80%)	59 (98%)	1 (2%)	60	72
2	D	62/75 (83%)	62 (100%)	0	100	100
All	All	851/920 (92%)	834 (98%)	17 (2%)	55	66

All (17) residues with a non-rotameric sidechain are listed below:

Mol	Chain	Res	Type
1	A	4	THR
1	A	40	TRP
1	A	65	VAL
1	A	104	ARG
1	A	138	ASP
1	A	177	SER
1	A	194	LEU
1	A	196	LEU
1	A	215	GLU
1	A	266	ASP

*Continued on next page...*

*Continued from previous page...*

Mol	Chain	Res	Type
1	A	270	GLN
1	A	337	ARG
1	A	410	VAL
1	B	15	LEU
1	B	40	TRP
1	B	337	ARG
2	C	53	ARG

Sometimes sidechains can be flipped to improve hydrogen bonding and reduce clashes. All (8) such sidechains are listed below:

Mol	Chain	Res	Type
1	A	11	GLN
1	A	70	GLN
1	A	425	GLN
1	B	270	GLN
1	B	373	HIS
1	B	383	HIS
1	B	392	GLN
2	C	56	HIS

### 5.3.3 RNA [i](#)

There are no RNA molecules in this entry.

### 5.4 Non-standard residues in protein, DNA, RNA chains [i](#)

There are no non-standard protein/DNA/RNA residues in this entry.

### 5.5 Carbohydrates [i](#)

There are no monosaccharides in this entry.

### 5.6 Ligand geometry [i](#)

Of 12 ligands modelled in this entry, 2 are monoatomic - leaving 10 for Mogul analysis.

In the following table, the Counts columns list the number of bonds (or angles) for which Mogul statistics could be retrieved, the number of bonds (or angles) that are observed in the model and the number of bonds (or angles) that are defined in the Chemical Component Dictionary. The

Link column lists molecule types, if any, to which the group is linked. The Z score for a bond length (or angle) is the number of standard deviations the observed value is removed from the expected value. A bond length (or angle) with  $|Z| > 2$  is considered an outlier worth inspection. RMSZ is the root-mean-square of all Z scores of the bond lengths (or angles).

Mol	Type	Chain	Res	Link	Bond lengths			Bond angles		
					Counts	RMSZ	# Z  > 2	Counts	RMSZ	# Z  > 2
8	TSA	C	1091	-	16,17,17	1.08	0	16,26,26	1.70	5 (31%)
4	SO4	B	1464	-	4,4,4	0.18	0	6,6,6	0.58	0
5	CE1	A	1465	-	24,24,36	0.75	0	23,23,35	0.59	1 (4%)
6	PG4	A	1466	-	12,12,12	0.50	0	11,11,11	0.71	0
4	SO4	B	1463	-	4,4,4	0.15	0	6,6,6	0.18	0
7	GOL	A	1467	-	5,5,5	0.41	0	5,5,5	0.43	0
7	GOL	B	1467	-	5,5,5	0.73	0	5,5,5	1.01	0
7	GOL	B	1466	-	5,5,5	0.46	0	5,5,5	0.39	0
4	SO4	A	1464	-	4,4,4	0.19	0	6,6,6	0.29	0
8	TSA	D	1091	-	16,17,17	1.07	1 (6%)	16,26,26	1.58	4 (25%)

In the following table, the Chirals column lists the number of chiral outliers, the number of chiral centers analysed, the number of these observed in the model and the number defined in the Chemical Component Dictionary. Similar counts are reported in the Torsion and Rings columns. '-' means no outliers of that kind were identified.

Mol	Type	Chain	Res	Link	Chirals	Torsions	Rings
8	TSA	C	1091	-	-	2/10/34/34	1/3/2/2
5	CE1	A	1465	-	-	16/22/22/34	-
6	PG4	A	1466	-	-	8/10/10/10	-
7	GOL	A	1467	-	-	4/4/4/4	-
7	GOL	B	1467	-	-	0/4/4/4	-
7	GOL	B	1466	-	-	0/4/4/4	-
8	TSA	D	1091	-	-	0/10/34/34	1/3/2/2

All (1) bond length outliers are listed below:

Mol	Chain	Res	Type	Atoms	Z	Observed(Å)	Ideal(Å)
8	D	1091	TSA	C6-C1	-2.25	1.51	1.55

All (10) bond angle outliers are listed below:

Mol	Chain	Res	Type	Atoms	Z	Observed(°)	Ideal(°)
8	D	1091	TSA	O7-C8-C11	3.54	114.63	107.70
8	C	1091	TSA	O7-C8-C11	3.41	114.39	107.70
8	C	1091	TSA	O4-C11-C8	2.47	120.08	113.03

Continued on next page...

*Continued from previous page...*

Mol	Chain	Res	Type	Atoms	Z	Observed(°)	Ideal(°)
8	C	1091	TSA	C5-C4-C3	2.43	112.51	109.05
8	D	1091	TSA	C9-C8-C11	-2.22	109.00	112.00
8	D	1091	TSA	C9-C1-C10	-2.17	104.67	109.85
8	C	1091	TSA	C9-C1-C10	-2.15	104.71	109.85
8	C	1091	TSA	C9-C8-C11	-2.07	109.19	112.00
8	D	1091	TSA	O4-C11-C8	2.05	118.89	113.03
5	A	1465	CE1	O16-C15-C14	2.03	119.54	110.39

There are no chirality outliers.

All (30) torsion outliers are listed below:

Mol	Chain	Res	Type	Atoms
7	A	1467	GOL	O1-C1-C2-C3
7	A	1467	GOL	C1-C2-C3-O3
6	A	1466	PG4	C4-C3-O2-C2
5	A	1465	CE1	O13-C14-C15-O16
5	A	1465	CE1	C5-C6-C7-C8
5	A	1465	CE1	C14-C15-O16-C17
5	A	1465	CE1	C2-C3-C4-C5
7	A	1467	GOL	O2-C2-C3-O3
5	A	1465	CE1	C7-C8-C9-C10
6	A	1466	PG4	O3-C5-C6-O4
6	A	1466	PG4	O1-C1-C2-O2
5	A	1465	CE1	C6-C7-C8-C9
5	A	1465	CE1	C10-C11-C12-O13
5	A	1465	CE1	O16-C17-C18-O19
5	A	1465	CE1	C11-C10-C9-C8
5	A	1465	CE1	C1-C2-C3-C4
7	A	1467	GOL	O1-C1-C2-O2
5	A	1465	CE1	C18-C17-O16-C15
5	A	1465	CE1	C24-C23-O22-C21
5	A	1465	CE1	C20-C21-O22-C23
6	A	1466	PG4	O2-C3-C4-O3
6	A	1466	PG4	O4-C7-C8-O5
6	A	1466	PG4	C3-C4-O3-C5
5	A	1465	CE1	O19-C20-C21-O22
5	A	1465	CE1	C9-C10-C11-C12
5	A	1465	CE1	C17-C18-O19-C20
6	A	1466	PG4	C5-C6-O4-C7
6	A	1466	PG4	C8-C7-O4-C6
8	C	1091	TSA	C2-C1-C10-O2
8	C	1091	TSA	C2-C1-C10-O1



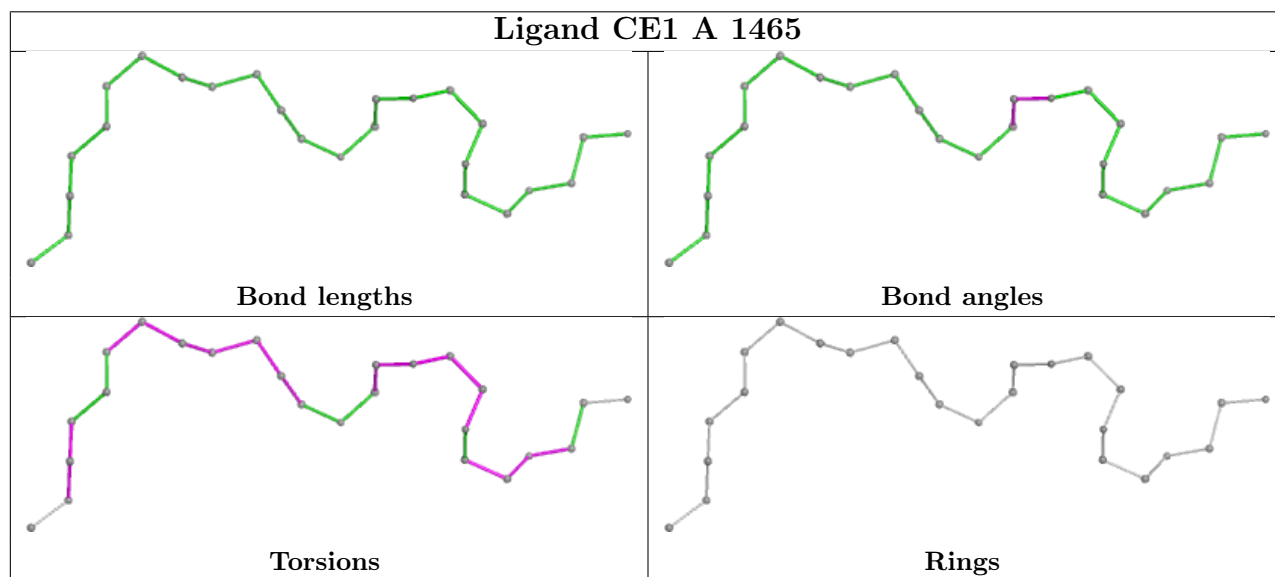
All (2) ring outliers are listed below:

Mol	Chain	Res	Type	Atoms
8	D	1091	TSA	C1-C2-C3-C4-C5-C8-C9-O7
8	C	1091	TSA	C1-C2-C3-C4-C5-C8-C9-O7

4 monomers are involved in 12 short contacts:

Mol	Chain	Res	Type	Clashes	Symm-Clashes
5	A	1465	CE1	4	0
6	A	1466	PG4	4	0
7	A	1467	GOL	1	0
7	B	1467	GOL	3	0

The following is a two-dimensional graphical depiction of Mogul quality analysis of bond lengths, bond angles, torsion angles, and ring geometry for all instances of the Ligand of Interest. In addition, ligands with molecular weight > 250 and outliers as shown on the validation Tables will also be included. For torsion angles, if less than 5% of the Mogul distribution of torsion angles is within 10 degrees of the torsion angle in question, then that torsion angle is considered an outlier. Any bond that is central to one or more torsion angles identified as an outlier by Mogul will be highlighted in the graph. For rings, the root-mean-square deviation (RMSD) between the ring in question and similar rings identified by Mogul is calculated over all ring torsion angles. If the average RMSD is greater than 60 degrees and the minimal RMSD between the ring in question and any Mogul-identified rings is also greater than 60 degrees, then that ring is considered an outlier. The outliers are highlighted in purple. The color gray indicates Mogul did not find sufficient equivalents in the CSD to analyse the geometry.



## 5.7 Other polymers [\(i\)](#)

There are no such residues in this entry.

## 5.8 Polymer linkage issues

There are no chain breaks in this entry.

## 6 Fit of model and data

### 6.1 Protein, DNA and RNA chains

In the following table, the column labelled ‘#RSRZ > 2’ contains the number (and percentage) of RSRZ outliers, followed by percent RSRZ outliers for the chain as percentile scores relative to all X-ray entries and entries of similar resolution. The OWAB column contains the minimum, median, 95<sup>th</sup> percentile and maximum values of the occupancy-weighted average B-factor per residue. The column labelled ‘Q < 0.9’ lists the number of (and percentage) of residues with an average occupancy less than 0.9.

Mol	Chain	Analysed	<RSRZ>	#RSRZ>2	OWAB(Å <sup>2</sup> )	Q<0.9
1	A	451/472 (95%)	0.13	20 (4%) 34 46	16, 26, 43, 51	0
1	B	449/472 (95%)	0.25	28 (6%) 20 29	16, 24, 50, 63	0
2	C	78/90 (86%)	0.75	13 (16%) 1 2	38, 42, 48, 51	0
2	D	79/90 (87%)	0.66	9 (11%) 5 7	35, 42, 50, 51	0
All	All	1057/1124 (94%)	0.26	70 (6%) 18 26	16, 27, 48, 63	0

All (70) RSRZ outliers are listed below:

Mol	Chain	Res	Type	RSRZ
2	D	12	PRO	6.5
1	B	377	THR	6.1
1	B	3	TRP	5.8
1	B	376	SER	5.4
1	B	379	PHE	5.0
1	B	10	ASP	4.6
2	D	16	THR	4.5
1	B	430	THR	4.4
1	A	430	THR	4.4
2	C	16	THR	4.3
1	A	11	GLN	4.0
2	C	14	ILE	4.0
1	B	375	SER	4.0
1	B	432	LEU	3.9
1	A	377	THR	3.9
1	B	429	GLU	3.4
2	C	47	MET	3.2
1	A	379	PHE	3.2
1	B	431	ASP	3.2
2	D	48	ALA	3.1
2	C	17	LEU	3.1

*Continued on next page...*

*Continued from previous page...*

<b>Mol</b>	<b>Chain</b>	<b>Res</b>	<b>Type</b>	<b>RSRZ</b>
1	B	434	GLY	3.1
1	A	233	VAL	3.1
1	B	426	ASP	3.0
1	B	433	ALA	3.0
1	A	268	GLU	3.0
1	B	378	GLY	3.0
1	B	428	SER	2.9
1	B	233	VAL	2.9
1	B	373	HIS	2.9
2	D	14	ILE	2.8
2	C	48	ALA	2.7
1	B	15	LEU	2.7
1	B	435	ARG	2.7
2	C	45	ALA	2.6
1	B	408	ILE	2.6
1	A	431	ASP	2.6
2	C	15	ASP	2.6
1	A	376	SER	2.6
2	D	49	SER	2.5
1	A	410	VAL	2.5
1	B	266	ASP	2.5
1	B	195	HIS	2.4
1	A	433	ALA	2.4
2	C	50	GLY	2.4
1	B	410	VAL	2.4
1	A	3	TRP	2.4
1	B	418	THR	2.4
1	B	416	ASN	2.4
1	A	429	GLU	2.3
2	C	49	SER	2.3
2	D	88	LEU	2.2
1	B	245	ALA	2.2
2	D	44	LYS	2.2
1	A	124	VAL	2.2
1	A	241	ALA	2.2
2	C	34	ARG	2.1
2	D	13	GLU	2.1
1	A	462	ASP	2.1
2	C	43	GLY	2.1
1	A	408	ILE	2.1
1	B	374	GLU	2.1
2	C	60	MET	2.1

*Continued on next page...*

*Continued from previous page...*

Mol	Chain	Res	Type	RSRZ
1	A	128	ALA	2.1
1	A	434	GLY	2.1
1	A	424	ALA	2.0
1	B	128	ALA	2.0
1	A	195	HIS	2.0
2	C	27	GLU	2.0
2	D	15	ASP	2.0

## 6.2 Non-standard residues in protein, DNA, RNA chains [i](#)

There are no non-standard protein/DNA/RNA residues in this entry.

## 6.3 Carbohydrates [i](#)

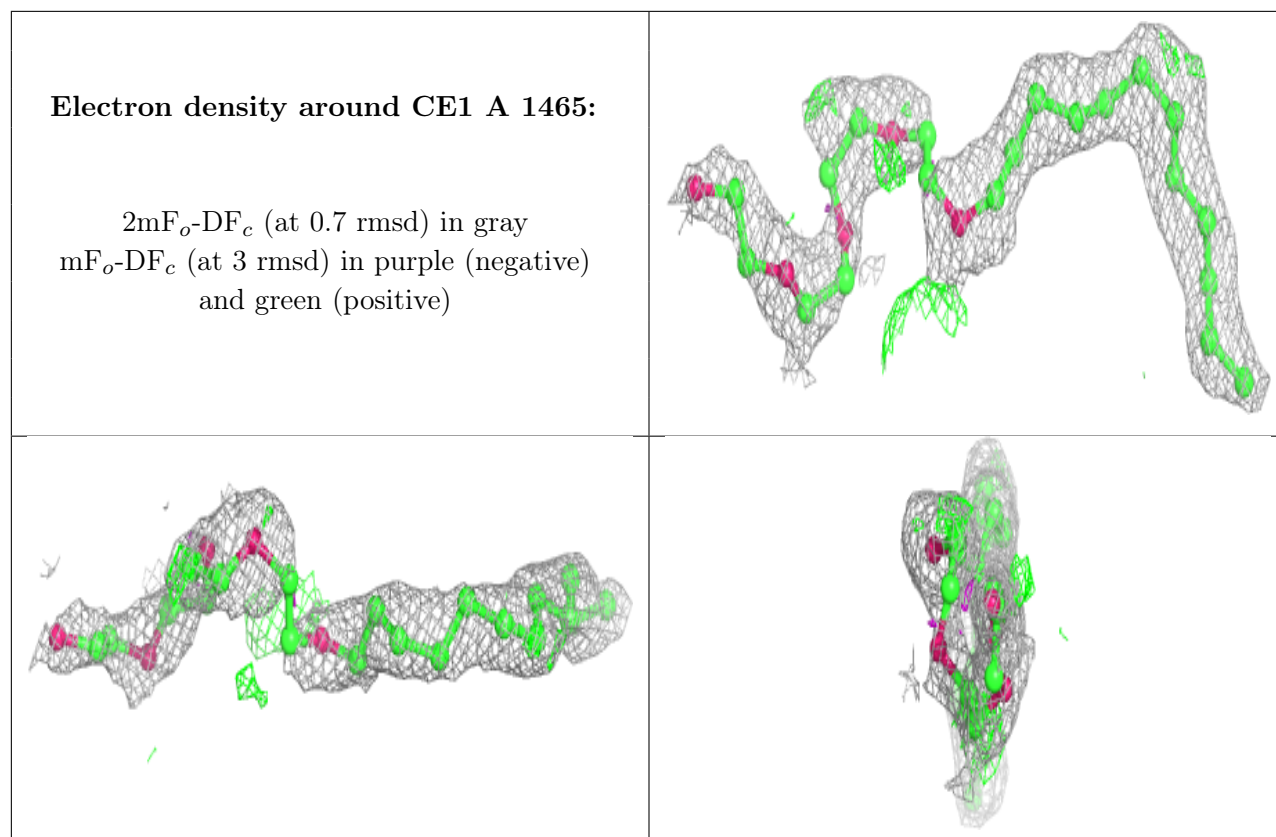
There are no monosaccharides in this entry.

## 6.4 Ligands [i](#)

In the following table, the Atoms column lists the number of modelled atoms in the group and the number defined in the chemical component dictionary. The B-factors column lists the minimum, median, 95<sup>th</sup> percentile and maximum values of B factors of atoms in the group. The column labelled 'Q<0.9' lists the number of atoms with occupancy less than 0.9.

Mol	Type	Chain	Res	Atoms	RSCC	RSR	B-factors( $\text{\AA}^2$ )	Q<0.9
5	CE1	A	1465	25/37	0.78	0.26	41,52,54,55	0
7	GOL	A	1467	6/6	0.83	0.24	38,40,43,45	0
7	GOL	B	1466	6/6	0.88	0.20	50,50,52,52	0
7	GOL	B	1467	6/6	0.88	0.27	37,39,40,41	0
6	PG4	A	1466	13/13	0.91	0.38	36,38,40,41	0
8	TSA	D	1091	16/16	0.93	0.11	35,37,38,38	0
8	TSA	C	1091	16/16	0.94	0.12	34,36,38,40	0
3	MN	A	1463	1/1	0.95	0.10	33,33,33,33	0
3	MN	B	1465	1/1	0.97	0.04	38,38,38,38	0
4	SO4	A	1464	5/5	0.98	0.08	32,33,35,37	0
4	SO4	B	1464	5/5	0.99	0.09	34,35,36,36	0
4	SO4	B	1463	5/5	0.99	0.10	26,26,27,31	0

The following is a graphical depiction of the model fit to experimental electron density of all instances of the Ligand of Interest. In addition, ligands with molecular weight > 250 and outliers as shown on the geometry validation Tables will also be included. Each fit is shown from different orientation to approximate a three-dimensional view.



## 6.5 Other polymers [i](#)

There are no such residues in this entry.