



# Full wwPDB X-ray Structure Validation Report ⓘ

Aug 21, 2023 – 10:15 PM EDT

PDB ID : 2Q8H  
Title : Structure of pyruvate dehydrogenase kinase isoform 1 in complex with dichloroacetate (DCA)  
Authors : Kato, M.; Li, J.; Chuang, J.L.; Chuang, D.T.  
Deposited on : 2007-06-10  
Resolution : 2.00 Å(reported)

This is a Full wwPDB X-ray Structure Validation Report for a publicly released PDB entry.

We welcome your comments at [validation@mail.wwpdb.org](mailto:validation@mail.wwpdb.org)

A user guide is available at

<https://www.wwpdb.org/validation/2017/XrayValidationReportHelp>

with specific help available everywhere you see the ⓘ symbol.

The types of validation reports are described at

<http://www.wwpdb.org/validation/2017/FAQs#types>.

---

The following versions of software and data (see [references ⓘ](#)) were used in the production of this report:

MolProbity : 4.02b-467  
Mogul : 1.8.5 (274361), CSD as541be (2020)  
Xtriage (Phenix) : 1.13  
EDS : 2.35  
Percentile statistics : 20191225.v01 (using entries in the PDB archive December 25th 2019)  
Refmac : 5.8.0158  
CCP4 : 7.0.044 (Gargrove)  
Ideal geometry (proteins) : Engh & Huber (2001)  
Ideal geometry (DNA, RNA) : Parkinson et al. (1996)  
Validation Pipeline (wwPDB-VP) : 2.35

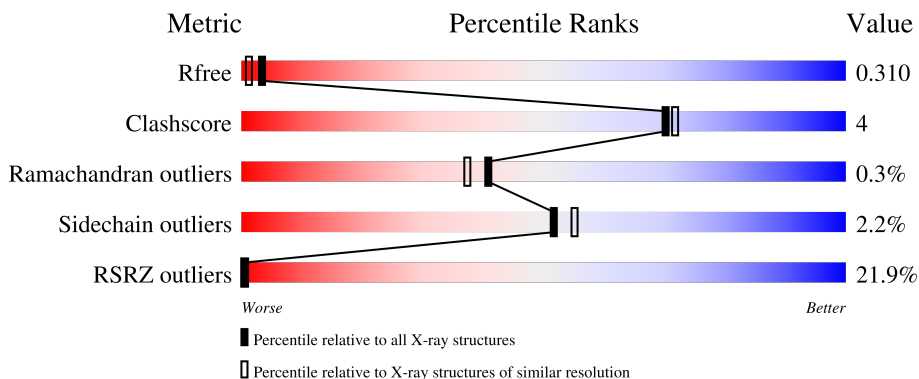
# 1 Overall quality at a glance

The following experimental techniques were used to determine the structure:

*X-RAY DIFFRACTION*

The reported resolution of this entry is 2.00 Å.

Percentile scores (ranging between 0-100) for global validation metrics of the entry are shown in the following graphic. The table shows the number of entries on which the scores are based.



Metric	Whole archive (#Entries)	Similar resolution (#Entries, resolution range(Å))
$R_{free}$	130704	8085 (2.00-2.00)
Clashscore	141614	9178 (2.00-2.00)
Ramachandran outliers	138981	9054 (2.00-2.00)
Sidechain outliers	138945	9053 (2.00-2.00)
RSRZ outliers	127900	7900 (2.00-2.00)

The table below summarises the geometric issues observed across the polymeric chains and their fit to the electron density. The red, orange, yellow and green segments of the lower bar indicate the fraction of residues that contain outliers for  $\geq 3$ , 2, 1 and 0 types of geometric quality criteria respectively. A grey segment represents the fraction of residues that are not modelled. The numeric value for each fraction is indicated below the corresponding segment, with a dot representing fractions  $\leq 5\%$ . The upper red bar (where present) indicates the fraction of residues that have poor fit to the electron density. The numeric value is given above the bar.

Mol	Chain	Length	Quality of chain
1	A	407	

The following table lists non-polymeric compounds, carbohydrate monomers and non-standard residues in protein, DNA, RNA chains that are outliers for geometric or electron-density-fit criteria:

Mol	Type	Chain	Res	Chirality	Geometry	Clashes	Electron density
3	TF4	A	438	-	-	X	-

## 2 Entry composition [i](#)

There are 4 unique types of molecules in this entry. The entry contains 3220 atoms, of which 0 are hydrogens and 0 are deuteriums.

In the tables below, the ZeroOcc column contains the number of atoms modelled with zero occupancy, the AltConf column contains the number of residues with at least one atom in alternate conformation and the Trace column contains the number of residues modelled with at most 2 atoms.

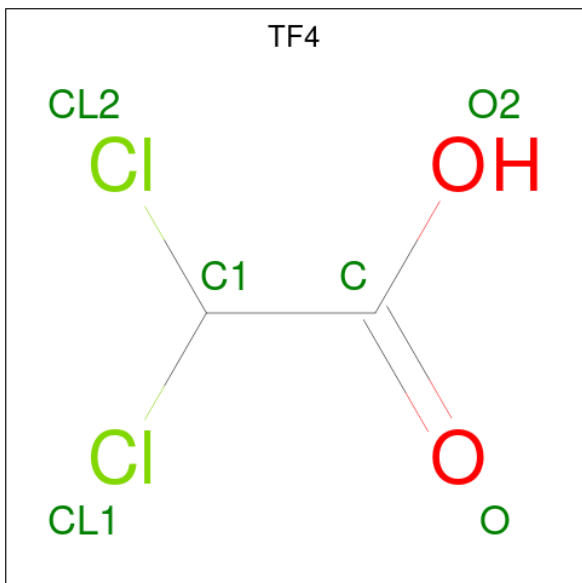
- Molecule 1 is a protein called [Pyruvate dehydrogenase [lipoamide]] kinase isozyme 1.

Mol	Chain	Residues	Atoms					ZeroOcc	AltConf	Trace
			Total	C	N	O	S			
1	A	365	2971	1906	506	544	15	0	2	0

- Molecule 2 is POTASSIUM ION (three-letter code: K) (formula: K).

Mol	Chain	Residues	Atoms	ZeroOcc	AltConf
2	A	1	Total 1 K 1	0	0

- Molecule 3 is DICHLORO-ACETIC ACID (three-letter code: TF4) (formula: C<sub>2</sub>H<sub>2</sub>Cl<sub>2</sub>O<sub>2</sub>).



Mol	Chain	Residues	Atoms				ZeroOcc	AltConf
			Total	C	Cl	O		
3	A	1	6	2	2	2	0	0

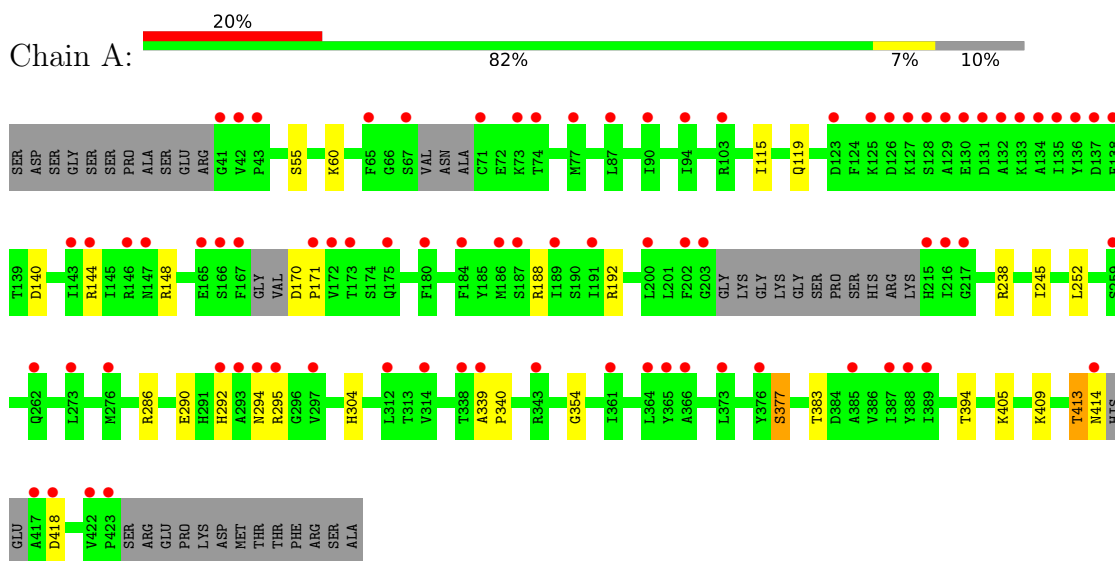
- Molecule 4 is water.

<b>Mol</b>	<b>Chain</b>	<b>Residues</b>	<b>Atoms</b>		<b>ZeroOcc</b>	<b>AltConf</b>
4	A	242	Total 242	O 242	0	0

### 3 Residue-property plots [i](#)

These plots are drawn for all protein, RNA, DNA and oligosaccharide chains in the entry. The first graphic for a chain summarises the proportions of the various outlier classes displayed in the second graphic. The second graphic shows the sequence view annotated by issues in geometry and electron density. Residues are color-coded according to the number of geometric quality criteria for which they contain at least one outlier: green = 0, yellow = 1, orange = 2 and red = 3 or more. A red dot above a residue indicates a poor fit to the electron density ( $RSRZ > 2$ ). Stretches of 2 or more consecutive residues without any outlier are shown as a green connector. Residues present in the sample, but not in the model, are shown in grey.

- Molecule 1: [Pyruvate dehydrogenase [lipoamide]] kinase isozyme 1



## 4 Data and refinement statistics

Property	Value	Source
Space group	P 41 21 2	Depositor
Cell constants a, b, c, $\alpha$ , $\beta$ , $\gamma$	98.32Å 98.32Å 110.56Å 90.00° 90.00° 90.00°	Depositor
Resolution (Å)	50.00 – 2.00 27.64 – 2.00	Depositor EDS
% Data completeness (in resolution range)	96.8 (50.00-2.00) 96.9 (27.64-2.00)	Depositor EDS
$R_{merge}$	(Not available)	Depositor
$R_{sym}$	(Not available)	Depositor
$\langle I/\sigma(I) \rangle$ <sup>1</sup>	2.72 (at 1.99Å)	Xtrriage
Refinement program	REFMAC	Depositor
R, $R_{free}$	0.230 , 0.277 0.260 , 0.310	Depositor DCC
$R_{free}$ test set	1802 reflections (4.99%)	wwPDB-VP
Wilson B-factor (Å <sup>2</sup> )	38.1	Xtrriage
Anisotropy	0.163	Xtrriage
Bulk solvent $k_{sol}$ (e/Å <sup>3</sup> ), $B_{sol}$ (Å <sup>2</sup> )	0.39 , 50.6	EDS
L-test for twinning <sup>2</sup>	$\langle  L  \rangle = 0.52$ , $\langle L^2 \rangle = 0.36$	Xtrriage
Estimated twinning fraction	No twinning to report.	Xtrriage
$F_o, F_c$ correlation	0.94	EDS
Total number of atoms	3220	wwPDB-VP
Average B, all atoms (Å <sup>2</sup> )	44.0	wwPDB-VP

Xtrriage's analysis on translational NCS is as follows: *The largest off-origin peak in the Patterson function is 3.24% of the height of the origin peak. No significant pseudotranslation is detected.*

<sup>1</sup>Intensities estimated from amplitudes.

<sup>2</sup>Theoretical values of  $\langle |L| \rangle$ ,  $\langle L^2 \rangle$  for acentric reflections are 0.5, 0.333 respectively for untwinned datasets, and 0.375, 0.2 for perfectly twinned datasets.

## 5 Model quality [i](#)

### 5.1 Standard geometry [i](#)

Bond lengths and bond angles in the following residue types are not validated in this section: TF4, K

The Z score for a bond length (or angle) is the number of standard deviations the observed value is removed from the expected value. A bond length (or angle) with  $|Z| > 5$  is considered an outlier worth inspection. RMSZ is the root-mean-square of all Z scores of the bond lengths (or angles).

Mol	Chain	Bond lengths		Bond angles	
		RMSZ	# Z  >5	RMSZ	# Z  >5
1	A	0.68	0/3047	0.69	1/4129 (0.0%)

There are no bond length outliers.

All (1) bond angle outliers are listed below:

Mol	Chain	Res	Type	Atoms	Z	Observed( $^{\circ}$ )	Ideal( $^{\circ}$ )
1	A	192	ARG	NE-CZ-NH1	-5.86	117.37	120.30

There are no chirality outliers.

There are no planarity outliers.

### 5.2 Too-close contacts [i](#)

In the following table, the Non-H and H(model) columns list the number of non-hydrogen atoms and hydrogen atoms in the chain respectively. The H(added) column lists the number of hydrogen atoms added and optimized by MolProbity. The Clashes column lists the number of clashes within the asymmetric unit, whereas Symm-Clashes lists symmetry-related clashes.

Mol	Chain	Non-H	H(model)	H(added)	Clashes	Symm-Clashes
1	A	2971	0	2922	21	0
2	A	1	0	0	0	0
3	A	6	0	0	4	0
4	A	242	0	0	5	0
All	All	3220	0	2922	21	0

The all-atom clashscore is defined as the number of clashes found per 1000 atoms (including hydrogen atoms). The all-atom clashscore for this structure is 4.

All (21) close contacts within the same asymmetric unit are listed below, sorted by their clash

magnitude.

Atom-1	Atom-2	Interatomic distance (Å)	Clash overlap (Å)
1:A:292:HIS:HA	1:A:295:ARG:HH11	1.50	0.77
1:A:292:HIS:HA	1:A:295:ARG:NH1	2.06	0.71
1:A:409:LYS:O	1:A:413:THR:HB	1.90	0.70
1:A:115:ILE:O	1:A:119:GLN:HG3	1.94	0.68
1:A:188:ARG:NH2	4:A:578:HOH:O	2.34	0.60
1:A:339:ALA:HB1	1:A:340:PRO:HD2	1.86	0.57
1:A:413:THR:O	1:A:414:ASN:HB2	2.04	0.57
1:A:377:SER:HB2	1:A:383:THR:OG1	2.07	0.55
1:A:286:ARG:O	1:A:290:GLU:HG3	2.07	0.54
1:A:405:LYS:HD2	1:A:409:LYS:HE3	1.90	0.53
1:A:304:HIS:HB2	4:A:634:HOH:O	2.09	0.52
1:A:188:ARG:NE	3:A:438:TF4:CL1	2.80	0.52
1:A:188:ARG:CD	3:A:438:TF4:CL1	2.97	0.50
1:A:354:GLY:HA3	4:A:541:HOH:O	2.13	0.49
1:A:188:ARG:HD3	3:A:438:TF4:O2	2.14	0.48
1:A:60:LYS:HD2	1:A:394:THR:HG22	1.99	0.45
1:A:144:ARG:O	1:A:148:ARG:HG2	2.19	0.43
1:A:294:ASN:ND2	4:A:659:HOH:O	2.51	0.43
1:A:170:ASP:OD1	1:A:171:PRO:HD2	2.20	0.41
1:A:188:ARG:HD3	3:A:438:TF4:CL1	2.58	0.41
1:A:188:ARG:NH2	4:A:646:HOH:O	2.54	0.40

There are no symmetry-related clashes.

## 5.3 Torsion angles [i](#)

### 5.3.1 Protein backbone [i](#)

In the following table, the Percentiles column shows the percent Ramachandran outliers of the chain as a percentile score with respect to all X-ray entries followed by that with respect to entries of similar resolution.

The Analysed column shows the number of residues for which the backbone conformation was analysed, and the total number of residues.

Mol	Chain	Analysed	Favoured	Allowed	Outliers	Percentiles
1	A	357/407 (88%)	345 (97%)	11 (3%)	1 (0%)	41 37

All (1) Ramachandran outliers are listed below:



Mol	Chain	Res	Type
1	A	245	ILE

### 5.3.2 Protein sidechains [i](#)

In the following table, the Percentiles column shows the percent sidechain outliers of the chain as a percentile score with respect to all X-ray entries followed by that with respect to entries of similar resolution.

The Analysed column shows the number of residues for which the sidechain conformation was analysed, and the total number of residues.

Mol	Chain	Analysed	Rotameric	Outliers	Percentiles
1	A	327/360 (91%)	320 (98%)	7 (2%)	53 57

All (7) residues with a non-rotameric sidechain are listed below:

Mol	Chain	Res	Type
1	A	55	SER
1	A	140	ASP
1	A	238	ARG
1	A	252	LEU
1	A	377	SER
1	A	413	THR
1	A	418	ASP

Sometimes sidechains can be flipped to improve hydrogen bonding and reduce clashes. There are no such sidechains identified.

### 5.3.3 RNA [i](#)

There are no RNA molecules in this entry.

## 5.4 Non-standard residues in protein, DNA, RNA chains [i](#)

There are no non-standard protein/DNA/RNA residues in this entry.

## 5.5 Carbohydrates [i](#)

There are no monosaccharides in this entry.

## 5.6 Ligand geometry

Of 2 ligands modelled in this entry, 1 is monoatomic - leaving 1 for Mogul analysis.

In the following table, the Counts columns list the number of bonds (or angles) for which Mogul statistics could be retrieved, the number of bonds (or angles) that are observed in the model and the number of bonds (or angles) that are defined in the Chemical Component Dictionary. The Link column lists molecule types, if any, to which the group is linked. The Z score for a bond length (or angle) is the number of standard deviations the observed value is removed from the expected value. A bond length (or angle) with  $|Z| > 2$  is considered an outlier worth inspection. RMSZ is the root-mean-square of all Z scores of the bond lengths (or angles).

Mol	Type	Chain	Res	Link	Bond lengths			Bond angles		
					Counts	RMSZ	# Z  > 2	Counts	RMSZ	# Z  > 2
3	TF4	A	438	-	5,5,5	1.55	0	6,6,6	1.92	1 (16%)

In the following table, the Chirals column lists the number of chiral outliers, the number of chiral centers analysed, the number of these observed in the model and the number defined in the Chemical Component Dictionary. Similar counts are reported in the Torsion and Rings columns. '-' means no outliers of that kind were identified.

Mol	Type	Chain	Res	Link	Chirals	Torsions	Rings
3	TF4	A	438	-	-	4/4/4/4	-

There are no bond length outliers.

All (1) bond angle outliers are listed below:

Mol	Chain	Res	Type	Atoms	Z	Observed(°)	Ideal(°)
3	A	438	TF4	CL2-C1-CL1	3.86	119.78	110.30

There are no chirality outliers.

All (4) torsion outliers are listed below:

Mol	Chain	Res	Type	Atoms
3	A	438	TF4	O-C-C1-CL2
3	A	438	TF4	O2-C-C1-CL2
3	A	438	TF4	O-C-C1-CL1
3	A	438	TF4	O2-C-C1-CL1

There are no ring outliers.

1 monomer is involved in 4 short contacts:

Mol	Chain	Res	Type	Clashes	Symm-Clashes
3	A	438	TF4	4	0

## 5.7 Other polymers [i](#)

There are no such residues in this entry.

## 5.8 Polymer linkage issues [i](#)

There are no chain breaks in this entry.

## 6 Fit of model and data [i](#)

### 6.1 Protein, DNA and RNA chains [i](#)

In the following table, the column labelled ‘#RSRZ > 2’ contains the number (and percentage) of RSRZ outliers, followed by percent RSRZ outliers for the chain as percentile scores relative to all X-ray entries and entries of similar resolution. The OWAB column contains the minimum, median, 95<sup>th</sup> percentile and maximum values of the occupancy-weighted average B-factor per residue. The column labelled ‘Q < 0.9’ lists the number of (and percentage) of residues with an average occupancy less than 0.9.

Mol	Chain	Analysed	<RSRZ>	#RSRZ>2	OWAB(Å <sup>2</sup> )	Q<0.9
1	A	365/407 (89%)	0.97	80 (21%) <b>0</b> <b>0</b>	34, 41, 58, 75	0

All (80) RSRZ outliers are listed below:

Mol	Chain	Res	Type	RSRZ
1	A	136	TYR	8.2
1	A	422	VAL	7.6
1	A	132	ALA	6.6
1	A	423	PRO	6.5
1	A	128	SER	6.4
1	A	172	VAL	6.3
1	A	417	ALA	5.9
1	A	65	PHE	5.8
1	A	43	PRO	5.5
1	A	134	ALA	5.1
1	A	294	ASN	5.1
1	A	215	HIS	4.6
1	A	171	PRO	4.6
1	A	297	VAL	4.5
1	A	130	GLU	4.4
1	A	293	ALA	4.2
1	A	71	CYS	4.2
1	A	90	ILE	4.1
1	A	77	MET	4.1
1	A	203	GLY	4.0
1	A	143	ILE	3.9
1	A	126	ASP	3.9
1	A	216	ILE	3.9
1	A	73	LYS	3.9
1	A	135	ILE	3.8
1	A	167	PHE	3.8
1	A	295	ARG	3.7

*Continued on next page...*

*Continued from previous page...*

<b>Mol</b>	<b>Chain</b>	<b>Res</b>	<b>Type</b>	<b>RSRZ</b>
1	A	165	GLU	3.6
1	A	133	LYS	3.6
1	A	166	SER	3.5
1	A	42	VAL	3.5
1	A	314	VAL	3.4
1	A	338	THR	3.4
1	A	339	ALA	3.4
1	A	173	THR	3.3
1	A	41	GLY	3.3
1	A	74	THR	3.2
1	A	184	PHE	3.2
1	A	217	GLY	3.1
1	A	414	ASN	3.1
1	A	129	ALA	3.1
1	A	131	ASP	3.0
1	A	67	SER	3.0
1	A	385	ALA	3.0
1	A	200	LEU	2.9
1	A	123	ASP	2.9
1	A	146	ARG	2.8
1	A	387	ILE	2.8
1	A	147	ASN	2.8
1	A	187	SER	2.8
1	A	103	ARG	2.7
1	A	365	TYR	2.7
1	A	361	ILE	2.7
1	A	144	ARG	2.6
1	A	125	LYS	2.6
1	A	137	ASP	2.6
1	A	127	LYS	2.6
1	A	180	PHE	2.5
1	A	175	GLN	2.5
1	A	262	GLN	2.5
1	A	259	SER	2.4
1	A	418	ASP	2.4
1	A	292	HIS	2.4
1	A	273	LEU	2.4
1	A	87	LEU	2.4
1	A	364	LEU	2.3
1	A	389	ILE	2.3
1	A	276	MET	2.2
1	A	343	ARG	2.2

*Continued on next page...*

*Continued from previous page...*

Mol	Chain	Res	Type	RSRZ
1	A	186	MET	2.2
1	A	138	PHE	2.2
1	A	366	ALA	2.2
1	A	312	LEU	2.2
1	A	189	ILE	2.1
1	A	202	PHE	2.1
1	A	373	LEU	2.1
1	A	376[A]	TYR	2.1
1	A	191	ILE	2.0
1	A	388	TYR	2.0
1	A	94	ILE	2.0

## 6.2 Non-standard residues in protein, DNA, RNA chains [i](#)

There are no non-standard protein/DNA/RNA residues in this entry.

## 6.3 Carbohydrates [i](#)

There are no monosaccharides in this entry.

## 6.4 Ligands [i](#)

In the following table, the Atoms column lists the number of modelled atoms in the group and the number defined in the chemical component dictionary. The B-factors column lists the minimum, median, 95<sup>th</sup> percentile and maximum values of B factors of atoms in the group. The column labelled 'Q< 0.9' lists the number of atoms with occupancy less than 0.9.

Mol	Type	Chain	Res	Atoms	RSCC	RSR	B-factors(Å <sup>2</sup> )	Q<0.9
3	TF4	A	438	6/6	0.79	0.22	66,68,68,70	0
2	K	A	437	1/1	0.97	0.07	42,42,42,42	0

## 6.5 Other polymers [i](#)

There are no such residues in this entry.