



Full wwPDB X-ray Structure Validation Report ⓘ

Jun 12, 2024 – 02:51 AM EDT

PDB ID : 2O02
Title : Phosphorylation independent interactions between 14-3-3 and Exoenzyme S:
from structure to pathogenesis
Authors : Ottmann, C.; Yasmin, L.; Weyand, M.; Hauser, A.R.; Wittinghofer, A.; Hall-
berg, B.
Deposited on : 2006-11-27
Resolution : 1.50 Å(reported)

This is a Full wwPDB X-ray Structure Validation Report for a publicly released PDB entry.

We welcome your comments at validation@mail.wwpdb.org

A user guide is available at

<https://www.wwpdb.org/validation/2017/XrayValidationReportHelp>

with specific help available everywhere you see the ⓘ symbol.

The types of validation reports are described at

<http://www.wwpdb.org/validation/2017/FAQs#types>.

The following versions of software and data (see [references ⓘ](#)) were used in the production of this report:

MolProbity : 4.02b-467
Mogul : 2022.3.0, CSD as543be (2022)
Xtrriage (Phenix) : 1.20.1
EDS : 2.36.2
Percentile statistics : 20191225.v01 (using entries in the PDB archive December 25th 2019)
Refmac : 5.8.0158
CCP4 : 7.0.044 (Gargrove)
Ideal geometry (proteins) : Engh & Huber (2001)
Ideal geometry (DNA, RNA) : Parkinson et al. (1996)
Validation Pipeline (wwPDB-VP) : 2.36.2

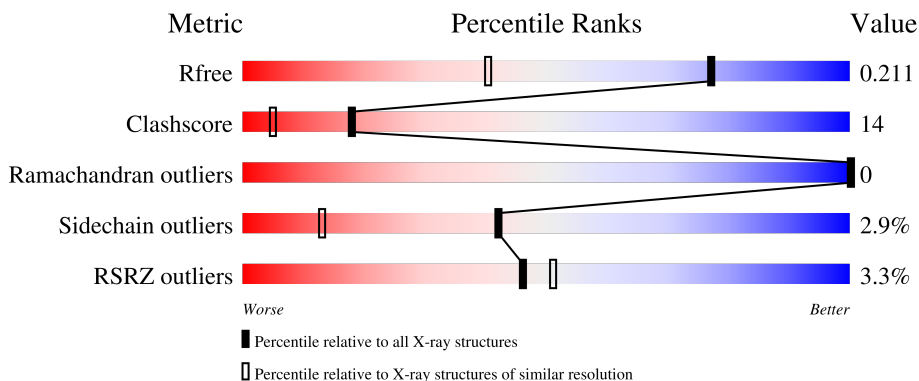
1 Overall quality at a glance i

The following experimental techniques were used to determine the structure:

X-RAY DIFFRACTION

The reported resolution of this entry is 1.50 Å.

Percentile scores (ranging between 0-100) for global validation metrics of the entry are shown in the following graphic. The table shows the number of entries on which the scores are based.



Metric	Whole archive (#Entries)	Similar resolution (#Entries, resolution range(Å))
R_{free}	130704	2936 (1.50-1.50)
Clashscore	141614	3144 (1.50-1.50)
Ramachandran outliers	138981	3066 (1.50-1.50)
Sidechain outliers	138945	3064 (1.50-1.50)
RSRZ outliers	127900	2884 (1.50-1.50)

The table below summarises the geometric issues observed across the polymeric chains and their fit to the electron density. The red, orange, yellow and green segments of the lower bar indicate the fraction of residues that contain outliers for ≥ 3 , 2, 1 and 0 types of geometric quality criteria respectively. A grey segment represents the fraction of residues that are not modelled. The numeric value for each fraction is indicated below the corresponding segment, with a dot representing fractions $\leq 5\%$. The upper red bar (where present) indicates the fraction of residues that have poor fit to the electron density. The numeric value is given above the bar.

Mol	Chain	Length	Quality of chain
1	A	230	 4% 67% 25% 5% •
1	B	230	 2% 72% 25% •
2	P	14	 14% 57% 29% 7% 7%
2	Q	14	 7% 36% 29% 7% 29%

2 Entry composition [i](#)

There are 4 unique types of molecules in this entry. The entry contains 4882 atoms, of which 0 are hydrogens and 0 are deuteriums.

In the tables below, the ZeroOcc column contains the number of atoms modelled with zero occupancy, the AltConf column contains the number of residues with at least one atom in alternate conformation and the Trace column contains the number of residues modelled with at most 2 atoms.

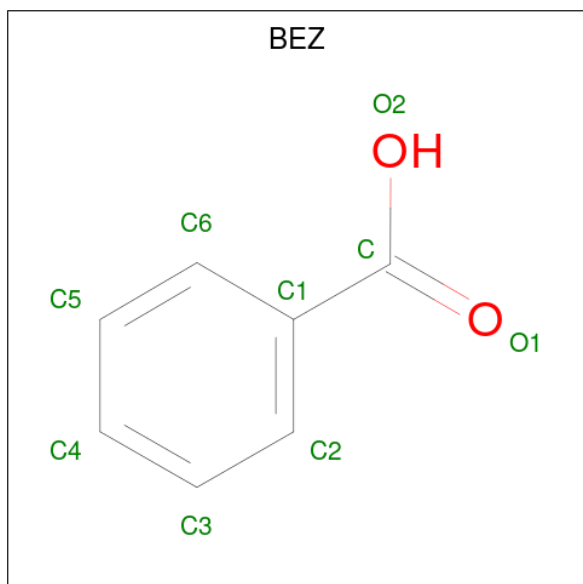
- Molecule 1 is a protein called 14-3-3 protein zeta/delta.

Mol	Chain	Residues	Atoms					ZeroOcc	AltConf	Trace
			Total	C	N	O	S			
1	A	224	Total 1953	C 1240	N 319	O 383	S 11	0	30	0
1	B	230	Total 2022	C 1283	N 336	O 393	S 10	0	28	0

- Molecule 2 is a protein called ExoS (416-430) peptide.

Mol	Chain	Residues	Atoms				ZeroOcc	AltConf	Trace
			Total	C	N	O			
2	P	14	Total 100	C 63	N 17	O 20	0	1	0
2	Q	10	Total 68	C 43	N 10	O 15	0	0	0

- Molecule 3 is BENZOIC ACID (three-letter code: BEZ) (formula: C₇H₆O₂).



Mol	Chain	Residues	Atoms			ZeroOcc	AltConf
3	A	1	Total	C	O	0	0
			9	7	2		
3	B	1	Total	C	O	0	0
			9	7	2		

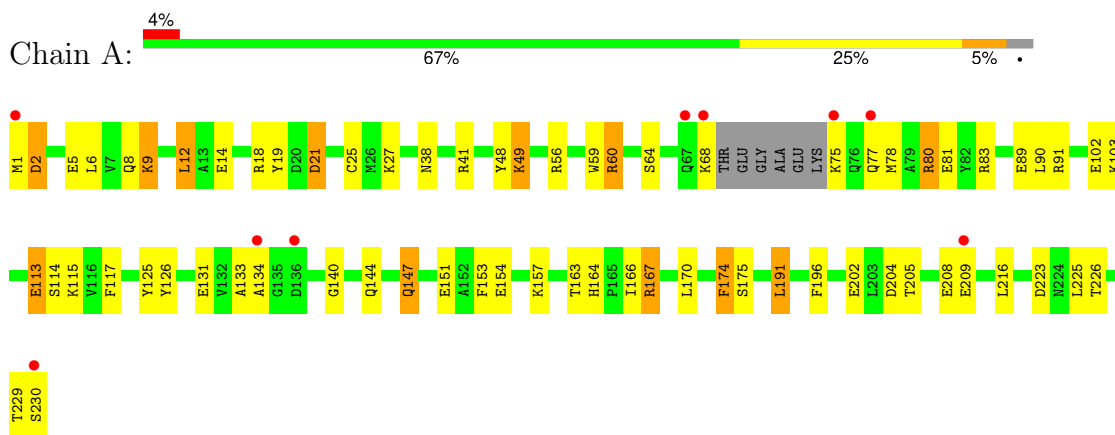
- Molecule 4 is water.

Mol	Chain	Residues	Atoms		ZeroOcc	AltConf
4	A	335	Total	O	0	0
			335	335		
4	B	342	Total	O	0	0
			342	342		
4	P	21	Total	O	0	0
			21	21		
4	Q	23	Total	O	0	0
			23	23		

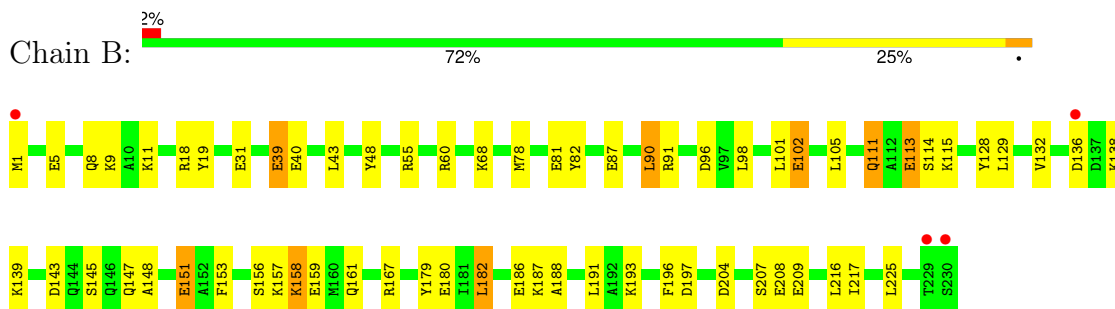
3 Residue-property plots [i](#)

These plots are drawn for all protein, RNA, DNA and oligosaccharide chains in the entry. The first graphic for a chain summarises the proportions of the various outlier classes displayed in the second graphic. The second graphic shows the sequence view annotated by issues in geometry and electron density. Residues are color-coded according to the number of geometric quality criteria for which they contain at least one outlier: green = 0, yellow = 1, orange = 2 and red = 3 or more. A red dot above a residue indicates a poor fit to the electron density ($RSRZ > 2$). Stretches of 2 or more consecutive residues without any outlier are shown as a green connector. Residues present in the sample, but not in the model, are shown in grey.

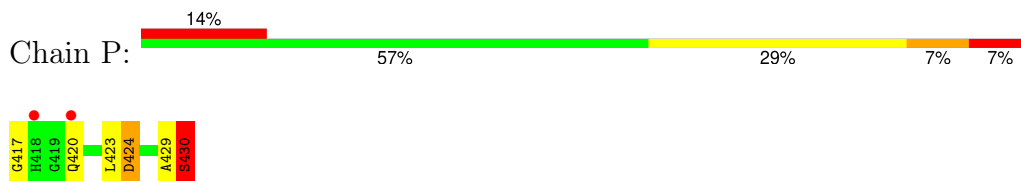
- Molecule 1: 14-3-3 protein zeta/delta



- Molecule 1: 14-3-3 protein zeta/delta



- Molecule 2: ExoS (416-430) peptide



- Molecule 2: ExoS (416-430) peptide



GLY	HIS	GLY	GLN	G421	L422	L423	D424	L428	A429	S430
-----	-----	-----	-----	------	------	------	------	------	------	------

4 Data and refinement statistics i

Property	Value	Source
Space group	P 21 21 21	Depositor
Cell constants a, b, c, α , β , γ	71.33Å 72.24Å 125.66Å 90.00° 90.00° 90.00°	Depositor
Resolution (Å)	19.74 – 1.50 19.74 – 1.50	Depositor EDS
% Data completeness (in resolution range)	100.0 (19.74-1.50) 99.5 (19.74-1.50)	Depositor EDS
R_{merge}	0.07	Depositor
R_{sym}	(Not available)	Depositor
$\langle I/\sigma(I) \rangle$ ¹	2.84 (at 1.50Å)	Xtrriage
Refinement program	REFMAC 5.2.0019	Depositor
R, R_{free}	0.147 , 0.212 0.147 , 0.211	Depositor DCC
R_{free} test set	5198 reflections (5.00%)	wwPDB-VP
Wilson B-factor (Å ²)	18.0	Xtrriage
Anisotropy	0.074	Xtrriage
Bulk solvent k_{sol} (e/Å ³), B_{sol} (Å ²)	0.34 , 74.1	EDS
L-test for twinning ²	$\langle L \rangle = 0.45$, $\langle L^2 \rangle = 0.27$	Xtrriage
Estimated twinning fraction	0.036 for k,h,-l	Xtrriage
F_o, F_c correlation	0.97	EDS
Total number of atoms	4882	wwPDB-VP
Average B, all atoms (Å ²)	27.0	wwPDB-VP

Xtrriage's analysis on translational NCS is as follows: *The largest off-origin peak in the Patterson function is 4.42% of the height of the origin peak. No significant pseudotranslation is detected.*

¹Intensities estimated from amplitudes.

²Theoretical values of $\langle |L| \rangle$, $\langle L^2 \rangle$ for acentric reflections are 0.5, 0.333 respectively for untwinned datasets, and 0.375, 0.2 for perfectly twinned datasets.

5 Model quality i

5.1 Standard geometry i

Bond lengths and bond angles in the following residue types are not validated in this section: BEZ

The Z score for a bond length (or angle) is the number of standard deviations the observed value is removed from the expected value. A bond length (or angle) with $|Z| > 5$ is considered an outlier worth inspection. RMSZ is the root-mean-square of all Z scores of the bond lengths (or angles).

Mol	Chain	Bond lengths		Bond angles	
		RMSZ	# Z >5	RMSZ	# Z >5
1	A	1.61	21/2068 (1.0%)	1.40	25/2773 (0.9%)
1	B	1.55	19/2143 (0.9%)	1.37	26/2869 (0.9%)
2	P	1.65	2/103 (1.9%)	1.27	1/138 (0.7%)
2	Q	1.53	1/67 (1.5%)	1.54	2/90 (2.2%)
All	All	1.58	43/4381 (1.0%)	1.39	54/5870 (0.9%)

All (43) bond length outliers are listed below:

Mol	Chain	Res	Type	Atoms	Z	Observed(Å)	Ideal(Å)
1	A	208	GLU	CB-CG	9.40	1.70	1.52
1	A	208	GLU	CG-CD	9.26	1.65	1.51
1	A	8	GLN	CG-CD	8.12	1.69	1.51
1	A	14	GLU	CG-CD	-7.35	1.41	1.51
1	B	87	GLU	CD-OE2	-7.28	1.17	1.25
1	B	19	TYR	CG-CD1	7.00	1.48	1.39
1	A	48	TYR	CG-CD1	6.78	1.48	1.39
1	B	81	GLU	CD-OE1	6.75	1.33	1.25
1	B	179	TYR	CE1-CZ	6.68	1.47	1.38
2	P	430	SER	CB-OG	6.55	1.50	1.42
1	A	80	ARG	CG-CD	6.32	1.67	1.51
1	A	117	PHE	CG-CD2	6.30	1.48	1.38
1	A	115[A]	LYS	CE-NZ	6.29	1.64	1.49
1	A	115[B]	LYS	CE-NZ	6.29	1.64	1.49
1	B	145[A]	SER	CB-OG	-6.18	1.34	1.42
1	B	145[B]	SER	CB-OG	-6.18	1.34	1.42
1	A	151	GLU	CD-OE2	6.13	1.32	1.25
1	A	131	GLU	CD-OE1	6.12	1.32	1.25
1	A	126	TYR	CE1-CZ	6.09	1.46	1.38
1	A	27	LYS	CE-NZ	-5.98	1.34	1.49
1	A	113	GLU	CG-CD	5.90	1.60	1.51
1	B	102	GLU	CD-OE1	5.89	1.32	1.25

Continued on next page...

Continued from previous page...

Mol	Chain	Res	Type	Atoms	Z	Observed(Å)	Ideal(Å)
1	B	48	TYR	CD1-CE1	5.70	1.47	1.39
1	A	81	GLU	CD-OE2	5.66	1.31	1.25
1	B	113	GLU	CD-OE1	5.61	1.31	1.25
1	B	8[A]	GLN	CG-CD	5.49	1.63	1.51
1	B	8[B]	GLN	CG-CD	5.49	1.63	1.51
1	B	55	ARG	CG-CD	-5.41	1.38	1.51
1	B	180	GLU	CD-OE1	5.38	1.31	1.25
1	A	196	PHE	CG-CD1	5.29	1.46	1.38
2	P	417	GLY	N-CA	5.28	1.53	1.46
1	A	59	TRP	CB-CG	5.26	1.59	1.50
1	B	188	ALA	C-O	5.25	1.33	1.23
1	A	91	ARG	CG-CD	5.22	1.65	1.51
2	Q	421	GLY	N-CA	5.19	1.53	1.46
1	B	196	PHE	CG-CD2	5.18	1.46	1.38
1	B	81	GLU	CD-OE2	5.16	1.31	1.25
1	A	83	ARG	CG-CD	5.14	1.64	1.51
1	B	153	PHE	CD1-CE1	5.12	1.49	1.39
1	B	151	GLU	CD-OE1	5.12	1.31	1.25
1	B	39	GLU	CD-OE2	-5.11	1.20	1.25
1	A	113	GLU	CD-OE1	5.05	1.31	1.25
1	A	196	PHE	CG-CD2	5.03	1.46	1.38

All (54) bond angle outliers are listed below:

Mol	Chain	Res	Type	Atoms	Z	Observed(°)	Ideal(°)
1	A	41	ARG	NE-CZ-NH2	-12.39	114.11	120.30
1	B	40	GLU	OE1-CD-OE2	-10.01	111.29	123.30
1	B	60[A]	ARG	NE-CZ-NH2	-9.11	115.75	120.30
1	B	60[B]	ARG	NE-CZ-NH2	-9.11	115.75	120.30
1	B	60[A]	ARG	NE-CZ-NH1	8.55	124.57	120.30
1	B	60[B]	ARG	NE-CZ-NH1	8.55	124.57	120.30
1	A	56	ARG	NE-CZ-NH2	8.41	124.51	120.30
1	A	91	ARG	NE-CZ-NH1	-7.91	116.34	120.30
1	B	90	LEU	CB-CG-CD2	-7.79	97.76	111.00
1	A	49[A]	LYS	CD-CE-NZ	7.59	129.16	111.70
1	A	49[B]	LYS	CD-CE-NZ	7.59	129.16	111.70
1	B	179	TYR	CB-CG-CD2	-7.53	116.48	121.00
1	B	55	ARG	NE-CZ-NH1	7.42	124.01	120.30
1	A	204	ASP	CB-CG-OD2	-7.35	111.69	118.30
1	A	204	ASP	CB-CG-OD1	7.24	124.82	118.30
1	A	56	ARG	NE-CZ-NH1	-7.02	116.79	120.30
1	B	128	TYR	CB-CG-CD1	7.00	125.20	121.00

Continued on next page...

Continued from previous page...

Mol	Chain	Res	Type	Atoms	Z	Observed(°)	Ideal(°)
1	B	18	ARG	NE-CZ-NH1	6.91	123.75	120.30
1	B	225	LEU	CB-CG-CD2	-6.47	100.00	111.00
1	A	131	GLU	OE1-CD-OE2	-6.39	115.64	123.30
1	B	60[A]	ARG	CD-NE-CZ	6.20	132.28	123.60
1	B	60[B]	ARG	CD-NE-CZ	6.20	132.28	123.60
1	A	167	ARG	NE-CZ-NH2	-6.14	117.23	120.30
1	A	89	GLU	OE1-CD-OE2	-6.09	115.99	123.30
1	B	87	GLU	OE1-CD-OE2	-6.08	116.01	123.30
2	P	424	ASP	CB-CG-OD2	-6.08	112.83	118.30
1	A	174	PHE	CB-CG-CD2	-6.02	116.58	120.80
1	B	145[A]	SER	N-CA-CB	5.77	119.16	110.50
1	B	145[B]	SER	N-CA-CB	5.77	119.16	110.50
1	A	60[A]	ARG	NE-CZ-NH1	5.76	123.18	120.30
1	A	60[B]	ARG	NE-CZ-NH1	5.76	123.18	120.30
1	A	19	TYR	CB-CG-CD2	-5.76	117.55	121.00
2	Q	424	ASP	CB-CG-OD2	-5.73	113.14	118.30
1	B	40	GLU	CG-CD-OE1	5.63	129.56	118.30
1	A	125	TYR	CB-CG-CD1	5.62	124.37	121.00
1	B	128	TYR	CB-CG-CD2	-5.62	117.63	121.00
1	A	170	LEU	CB-CG-CD2	-5.48	101.68	111.00
1	A	80	ARG	NE-CZ-NH1	5.47	123.04	120.30
1	B	179	TYR	CG-CD1-CE1	-5.38	116.99	121.30
1	B	167	ARG	NE-CZ-NH1	5.38	122.99	120.30
1	B	43	LEU	CB-CG-CD2	-5.36	101.89	111.00
1	A	18	ARG	NE-CZ-NH1	5.30	122.95	120.30
1	B	132	VAL	CG1-CB-CG2	-5.27	102.47	110.90
1	A	21	ASP	CB-CG-OD2	-5.20	113.62	118.30
1	A	223	ASP	CB-CG-OD2	-5.18	113.64	118.30
2	Q	423	LEU	CB-CG-CD2	5.15	119.76	111.00
1	A	191	LEU	CA-CB-CG	5.11	127.06	115.30
1	A	12[A]	LEU	N-CA-CB	-5.10	100.21	110.40
1	A	12[B]	LEU	N-CA-CB	-5.10	100.21	110.40
1	B	182[A]	LEU	CA-CB-CG	5.10	127.02	115.30
1	B	182[B]	LEU	CA-CB-CG	5.10	127.02	115.30
1	A	90	LEU	CB-CG-CD1	-5.09	102.35	111.00
1	B	31	GLU	OE1-CD-OE2	5.02	129.32	123.30
1	B	225	LEU	CB-CG-CD1	-5.01	102.48	111.00

There are no chirality outliers.

There are no planarity outliers.

5.2 Too-close contacts

In the following table, the Non-H and H(model) columns list the number of non-hydrogen atoms and hydrogen atoms in the chain respectively. The H(added) column lists the number of hydrogen atoms added and optimized by MolProbity. The Clashes column lists the number of clashes within the asymmetric unit, whereas Symm-Clashes lists symmetry-related clashes.

Mol	Chain	Non-H	H(model)	H(added)	Clashes	Symm-Clashes
1	A	1953	0	2035	57	1
1	B	2022	0	2120	58	1
2	P	100	0	101	8	0
2	Q	68	0	69	3	0
3	A	9	0	5	0	0
3	B	9	0	5	0	0
4	A	335	0	0	22	1
4	B	342	0	0	24	1
4	P	21	0	0	1	0
4	Q	23	0	0	1	0
All	All	4882	0	4335	115	2

The all-atom clashscore is defined as the number of clashes found per 1000 atoms (including hydrogen atoms). The all-atom clashscore for this structure is 14.

All (115) close contacts within the same asymmetric unit are listed below, sorted by their clash magnitude.

Atom-1	Atom-2	Interatomic distance (Å)	Clash overlap (Å)
1:B:186[B]:GLU:OE1	4:B:1074:HOH:O	1.66	1.11
1:B:115[A]:LYS:HE2	4:B:1119:HOH:O	1.52	1.09
1:A:1[B]:MET:HE3	1:A:6:LEU:HD11	1.40	1.03
1:A:202:GLU:O	1:A:205:THR:HG22	1.61	0.99
1:A:114[A]:SER:OG	4:A:960:HOH:O	1.84	0.95
1:A:134:ALA:HB3	4:A:1132:HOH:O	1.66	0.94
1:B:186[B]:GLU:CD	4:B:1074:HOH:O	2.05	0.92
1:B:161:GLN:HG2	4:B:1105:HOH:O	1.71	0.89
1:B:1:MET:HE1	1:B:9:LYS:HD2	1.52	0.89
1:A:1[A]:MET:HE3	4:A:1106:HOH:O	1.74	0.88
2:P:420:GLN:O	4:P:444:HOH:O	1.92	0.88
1:B:68:LYS:HE2	4:B:924:HOH:O	1.73	0.87
1:B:96[A]:ASP:OD2	4:B:1023:HOH:O	1.91	0.87
1:B:115[A]:LYS:CE	4:B:1119:HOH:O	2.15	0.87
1:B:216:LEU:HD12	4:B:1124:HOH:O	1.76	0.86
1:B:187[A]:LYS:HE3	4:B:1063:HOH:O	1.76	0.84
1:B:1:MET:HE1	1:B:9:LYS:CD	2.08	0.82

Continued on next page...

Continued from previous page...

Atom-1	Atom-2	Interatomic distance (Å)	Clash overlap (Å)
1:A:5[A]:GLU:OE2	4:A:1114:HOH:O	1.96	0.82
1:A:134:ALA:CB	4:A:1132:HOH:O	2.26	0.82
1:B:101[B]:LEU:HD12	1:B:105:LEU:HD12	1.59	0.81
1:B:138:LYS:HE3	4:B:997:HOH:O	1.80	0.81
1:A:153:PHE:CE2	1:A:157[A]:LYS:HD2	2.16	0.81
1:A:154[A]:GLU:OE1	4:A:897:HOH:O	1.98	0.79
1:B:91[C]:ARG:HD2	1:B:129:LEU:HD22	1.64	0.79
1:A:9[A]:LYS:HE3	1:B:82:TYR:CE1	2.18	0.78
1:A:164[B]:HIS:HD2	1:A:166:ILE:H	1.32	0.78
1:B:216:LEU:CD1	4:B:1124:HOH:O	2.32	0.77
1:A:9[A]:LYS:HD2	1:A:25:CYS:SG	2.26	0.76
1:B:186[B]:GLU:OE2	4:B:1074:HOH:O	2.04	0.73
1:B:1:MET:CE	1:B:9:LYS:HD2	2.17	0.73
1:A:175[A]:SER:OG	4:A:1117:HOH:O	2.03	0.72
1:A:103:LYS:NZ	4:A:1013:HOH:O	2.23	0.71
1:A:133:ALA:O	4:A:1008:HOH:O	2.08	0.71
1:B:158[A]:LYS:HE3	1:B:159:GLU:OE1	1.91	0.71
1:A:49[B]:LYS:NZ	2:P:424:ASP:OD1	2.25	0.69
1:A:229:THR:O	1:A:229:THR:HG22	1.92	0.69
1:B:193[B]:LYS:HE3	1:B:197:ASP:OD2	1.93	0.68
1:B:115[A]:LYS:NZ	4:B:1119:HOH:O	2.25	0.68
1:B:216:LEU:HD13	4:B:1103:HOH:O	1.92	0.68
1:B:156[A]:SER:OG	4:B:919:HOH:O	2.10	0.67
1:A:163:THR:OG1	1:A:205:THR:HG23	1.96	0.66
2:P:429:ALA:O	2:P:430:SER:HB2	1.95	0.65
1:B:101[B]:LEU:CD1	1:B:105:LEU:HD12	2.26	0.65
1:A:1[B]:MET:CE	1:A:6:LEU:HD11	2.25	0.64
2:Q:430:SER:HA	4:Q:452:HOH:O	1.97	0.64
1:A:64[A]:SER:HB3	4:A:925:HOH:O	1.98	0.63
1:B:161:GLN:NE2	4:B:954:HOH:O	2.27	0.63
1:B:1:MET:HE3	1:B:9:LYS:HE3	1.80	0.62
1:B:147[B]:GLN:HG2	4:B:813:HOH:O	2.00	0.62
1:A:147[A]:GLN:OE1	4:A:824:HOH:O	2.16	0.61
1:B:136[B]:ASP:HB2	4:B:970:HOH:O	2.01	0.61
1:A:38[B]:ASN:ND2	4:A:880:HOH:O	2.34	0.60
1:A:140:GLY:O	1:A:144[A]:GLN:HG3	2.01	0.60
1:A:75:LYS:N	4:A:1120:HOH:O	2.34	0.59
1:B:91[C]:ARG:HD2	1:B:129:LEU:CD2	2.32	0.59
1:A:157[A]:LYS:CG	4:A:936:HOH:O	2.50	0.59
1:B:191:LEU:HD12	4:B:879:HOH:O	2.02	0.59
1:B:102:GLU:HG2	4:B:804:HOH:O	2.03	0.58

Continued on next page...

Continued from previous page...

Atom-1	Atom-2	Interatomic distance (Å)	Clash overlap (Å)
1:A:102[A]:GLU:HG2	4:A:808:HOH:O	2.03	0.58
1:A:229:THR:O	1:A:229:THR:CG2	2.51	0.57
1:A:114[B]:SER:HB3	4:A:960:HOH:O	2.03	0.57
1:A:5[A]:GLU:HG2	1:B:78:MET:HE1	1.87	0.56
1:A:2[A]:ASP:OD2	1:A:5[A]:GLU:HB2	2.06	0.56
1:A:5[A]:GLU:HG2	1:B:78:MET:CE	2.37	0.55
1:B:98:LEU:HA	1:B:101[B]:LEU:HD22	1.89	0.55
1:A:157[B]:LYS:HD2	1:A:167:ARG:NH2	2.23	0.53
1:A:157[A]:LYS:HG3	4:A:1115:HOH:O	2.08	0.53
1:A:1[B]:MET:CE	1:A:6:LEU:HD21	2.38	0.53
1:B:11:LYS:NZ	1:B:39:GLU:OE2	2.41	0.52
1:A:60[A]:ARG:NH2	4:A:838:HOH:O	2.42	0.51
1:B:91[C]:ARG:CD	1:B:129:LEU:HD22	2.37	0.51
1:A:1[B]:MET:HE1	1:A:6:LEU:HD21	1.93	0.51
1:A:49[B]:LYS:CE	2:P:424:ASP:OD1	2.60	0.50
1:B:147[B]:GLN:NE2	1:B:151:GLU:OE1	2.45	0.50
1:B:113:GLU:HG3	4:B:841:HOH:O	2.13	0.49
1:B:1:MET:CE	1:B:9:LYS:CD	2.82	0.49
1:A:216:LEU:HD23	2:P:423[A]:LEU:HD13	1.93	0.49
1:A:157[B]:LYS:NZ	1:A:167:ARG:HH22	2.11	0.48
1:B:1:MET:CE	1:B:9:LYS:HE3	2.43	0.48
1:B:157:LYS:HE2	4:B:829:HOH:O	2.12	0.48
1:A:157[A]:LYS:HG2	4:A:936:HOH:O	2.12	0.48
1:A:113:GLU:HG3	1:A:166:ILE:HD12	1.95	0.48
1:B:158[A]:LYS:HE3	1:B:159:GLU:CD	2.34	0.47
1:A:64[B]:SER:HB2	4:A:925:HOH:O	2.12	0.47
1:B:147[B]:GLN:HG3	1:B:148:ALA:N	2.29	0.46
1:B:90:LEU:C	1:B:90:LEU:HD23	2.37	0.46
1:A:80:ARG:HD3	4:A:1089:HOH:O	2.15	0.45
1:A:164[B]:HIS:HD2	1:A:166:ILE:N	2.08	0.45
1:A:144[A]:GLN:NE2	4:A:957:HOH:O	2.49	0.45
1:A:12[B]:LEU:HD12	1:B:78:MET:HG2	1.99	0.44
1:B:187[A]:LYS:CE	4:B:1063:HOH:O	2.49	0.44
1:B:1:MET:HE2	1:B:5:GLU:CG	2.48	0.44
1:B:111[A]:GLN:NE2	1:B:114:SER:OG	2.50	0.44
1:A:49[B]:LYS:HE2	2:P:424:ASP:OD1	2.18	0.44
1:B:182[B]:LEU:HA	1:B:182[B]:LEU:HD23	1.61	0.44
1:B:1:MET:HE2	1:B:5:GLU:HB3	2.00	0.44
1:A:77:GLN:O	1:A:77:GLN:HG2	2.18	0.43
1:A:157[B]:LYS:HZ3	1:A:167:ARG:HH22	1.66	0.43
1:B:217:ILE:HD11	2:Q:423:LEU:CD2	2.49	0.43

Continued on next page...

Continued from previous page...

Atom-1	Atom-2	Interatomic distance (Å)	Clash overlap (Å)
1:B:193[B]:LYS:HE3	1:B:197:ASP:CG	2.38	0.43
1:A:164[B]:HIS:CD2	1:A:166:ILE:H	2.22	0.42
1:A:216:LEU:HD23	2:P:423[A]:LEU:CD1	2.49	0.42
1:A:163:THR:OG1	1:A:205:THR:CG2	2.66	0.42
1:A:226:THR:O	1:A:230:SER:HB3	2.19	0.42
1:A:9[A]:LYS:HE2	1:A:21:ASP:HB3	2.00	0.42
1:B:143:ASP:O	1:B:147[A]:GLN:HG3	2.20	0.42
2:Q:423:LEU:HD22	2:Q:428:LEU:HD11	2.02	0.41
1:A:78:MET:SD	1:B:9:LYS:HG3	2.60	0.41
1:B:207[B]:SER:OG	1:B:209:GLU:HG2	2.19	0.41
1:B:139[C]:LYS:HG3	4:B:976:HOH:O	2.19	0.41
2:P:429:ALA:O	2:P:430:SER:CB	2.68	0.41
1:B:1:MET:HE3	1:B:5:GLU:OE2	2.21	0.41
1:B:158[C]:LYS:HG3	1:B:159:GLU:HG2	2.03	0.40

All (2) symmetry-related close contacts are listed below. The label for Atom-2 includes the symmetry operator and encoded unit-cell translations to be applied.

Atom-1	Atom-2	Interatomic distance (Å)	Clash overlap (Å)
1:B:193[B]:LYS:NZ	4:A:1094:HOH:O[4_445]	1.77	0.43
1:A:9[B]:LYS:NZ	4:B:901:HOH:O[3_454]	1.88	0.32

5.3 Torsion angles [i](#)

5.3.1 Protein backbone [i](#)

In the following table, the Percentiles column shows the percent Ramachandran outliers of the chain as a percentile score with respect to all X-ray entries followed by that with respect to entries of similar resolution.

The Analysed column shows the number of residues for which the backbone conformation was analysed, and the total number of residues.

Mol	Chain	Analysed	Favoured	Allowed	Outliers	Percentiles	
1	A	249/230 (108%)	247 (99%)	2 (1%)	0	100	100
1	B	260/230 (113%)	258 (99%)	2 (1%)	0	100	100
2	P	13/14 (93%)	13 (100%)	0	0	100	100
2	Q	8/14 (57%)	8 (100%)	0	0	100	100

Continued on next page...

Continued from previous page...

Mol	Chain	Analysed	Favoured	Allowed	Outliers	Percentiles	
All	All	530/488 (109%)	526 (99%)	4 (1%)	0	100	100

There are no Ramachandran outliers to report.

5.3.2 Protein sidechains [i](#)

In the following table, the Percentiles column shows the percent sidechain outliers of the chain as a percentile score with respect to all X-ray entries followed by that with respect to entries of similar resolution.

The Analysed column shows the number of residues for which the sidechain conformation was analysed, and the total number of residues.

Mol	Chain	Analysed	Rotameric	Outliers	Percentiles	
1	A	226/200 (113%)	216 (96%)	10 (4%)	28	5
1	B	232/200 (116%)	225 (97%)	7 (3%)	41	12
2	P	10/9 (111%)	9 (90%)	1 (10%)	7	0
2	Q	7/9 (78%)	7 (100%)	0	100	100
All	All	475/418 (114%)	457 (96%)	18 (4%)	42	7

All (18) residues with a non-rotameric sidechain are listed below:

Mol	Chain	Res	Type
1	A	2[A]	ASP
1	A	2[B]	ASP
1	A	9[A]	LYS
1	A	9[B]	LYS
1	A	147[A]	GLN
1	A	147[B]	GLN
1	A	174	PHE
1	A	191	LEU
1	A	209	GLU
1	A	225	LEU
1	B	111[A]	GLN
1	B	111[B]	GLN
1	B	158[A]	LYS
1	B	158[B]	LYS
1	B	158[C]	LYS
1	B	204	ASP
1	B	208	GLU

Continued on next page...

Continued from previous page...

Mol	Chain	Res	Type
2	P	430	SER

Sometimes sidechains can be flipped to improve hydrogen bonding and reduce clashes. All (5) such sidechains are listed below:

Mol	Chain	Res	Type
1	A	8	GLN
1	A	108	ASN
1	B	4	ASN
1	B	38	ASN
1	B	76	GLN

5.3.3 RNA [i](#)

There are no RNA molecules in this entry.

5.4 Non-standard residues in protein, DNA, RNA chains [i](#)

There are no non-standard protein/DNA/RNA residues in this entry.

5.5 Carbohydrates [i](#)

There are no monosaccharides in this entry.

5.6 Ligand geometry [i](#)

2 ligands are modelled in this entry.

In the following table, the Counts columns list the number of bonds (or angles) for which Mogul statistics could be retrieved, the number of bonds (or angles) that are observed in the model and the number of bonds (or angles) that are defined in the Chemical Component Dictionary. The Link column lists molecule types, if any, to which the group is linked. The Z score for a bond length (or angle) is the number of standard deviations the observed value is removed from the expected value. A bond length (or angle) with $|Z| > 2$ is considered an outlier worth inspection. RMSZ is the root-mean-square of all Z scores of the bond lengths (or angles).

Mol	Type	Chain	Res	Link	Bond lengths			Bond angles		
					Counts	RMSZ	# Z > 2	Counts	RMSZ	# Z > 2
3	BEZ	B	802	-	9,9,9	1.78	3 (33%)	11,11,11	1.32	1 (9%)
3	BEZ	A	801	-	9,9,9	1.83	3 (33%)	11,11,11	1.93	3 (27%)

In the following table, the Chirals column lists the number of chiral outliers, the number of chiral centers analysed, the number of these observed in the model and the number defined in the Chemical Component Dictionary. Similar counts are reported in the Torsion and Rings columns. '-' means no outliers of that kind were identified.

Mol	Type	Chain	Res	Link	Chirals	Torsions	Rings
3	BEZ	B	802	-	-	4/4/4/4	0/1/1/1
3	BEZ	A	801	-	-	0/4/4/4	0/1/1/1

All (6) bond length outliers are listed below:

Mol	Chain	Res	Type	Atoms	Z	Observed(Å)	Ideal(Å)
3	A	801	BEZ	C6-C1	3.20	1.44	1.39
3	B	802	BEZ	C2-C1	2.97	1.43	1.39
3	B	802	BEZ	C6-C1	2.94	1.43	1.39
3	A	801	BEZ	C2-C1	2.55	1.43	1.39
3	B	802	BEZ	C1-C	2.20	1.54	1.49
3	A	801	BEZ	O1-C	2.02	1.28	1.22

All (4) bond angle outliers are listed below:

Mol	Chain	Res	Type	Atoms	Z	Observed(°)	Ideal(°)
3	A	801	BEZ	C3-C2-C1	-4.55	115.89	120.36
3	B	802	BEZ	O2-C-O1	-2.97	116.98	123.35
3	A	801	BEZ	C5-C4-C3	2.72	123.59	119.87
3	A	801	BEZ	C6-C1-C2	2.40	121.62	118.57

There are no chirality outliers.

All (4) torsion outliers are listed below:

Mol	Chain	Res	Type	Atoms
3	B	802	BEZ	O2-C-C1-C6
3	B	802	BEZ	O2-C-C1-C2
3	B	802	BEZ	O1-C-C1-C6
3	B	802	BEZ	O1-C-C1-C2

There are no ring outliers.

No monomer is involved in short contacts.

5.7 Other polymers [i](#)

There are no such residues in this entry.

5.8 Polymer linkage issues

There are no chain breaks in this entry.

6 Fit of model and data [i](#)

6.1 Protein, DNA and RNA chains [i](#)

In the following table, the column labelled ‘#RSRZ> 2’ contains the number (and percentage) of RSRZ outliers, followed by percent RSRZ outliers for the chain as percentile scores relative to all X-ray entries and entries of similar resolution. The OWAB column contains the minimum, median, 95th percentile and maximum values of the occupancy-weighted average B-factor per residue. The column labelled ‘Q< 0.9’ lists the number of (and percentage) of residues with an average occupancy less than 0.9.

Mol	Chain	Analysed	<RSRZ>	#RSRZ>2	OWAB(Å ²)	Q<0.9
1	A	224/230 (97%)	-0.18	9 (4%) 38 42	13, 22, 42, 63	0
1	B	230/230 (100%)	-0.32	4 (1%) 70 75	13, 23, 40, 55	0
2	P	14/14 (100%)	0.13	2 (14%) 2 2	16, 22, 42, 49	0
2	Q	10/14 (71%)	-0.52	1 (10%) 7 7	16, 22, 31, 42	0
All	All	478/488 (97%)	-0.24	16 (3%) 46 51	13, 23, 41, 63	0

All (16) RSRZ outliers are listed below:

Mol	Chain	Res	Type	RSRZ
1	A	134	ALA	6.5
1	A	230	SER	5.1
1	A	67[A]	GLN	3.7
1	A	75	LYS	3.2
2	P	418	HIS	3.1
1	B	136[A]	ASP	3.0
1	B	230	SER	2.9
1	A	209	GLU	2.7
1	A	136	ASP	2.7
1	B	229	THR	2.6
2	Q	430	SER	2.5
1	A	77	GLN	2.5
1	A	1[A]	MET	2.3
1	B	1	MET	2.3
1	A	68	LYS	2.2
2	P	420	GLN	2.1

6.2 Non-standard residues in protein, DNA, RNA chains [i](#)

There are no non-standard protein/DNA/RNA residues in this entry.

6.3 Carbohydrates [i](#)

There are no monosaccharides in this entry.

6.4 Ligands [i](#)

In the following table, the Atoms column lists the number of modelled atoms in the group and the number defined in the chemical component dictionary. The B-factors column lists the minimum, median, 95th percentile and maximum values of B factors of atoms in the group. The column labelled 'Q< 0.9' lists the number of atoms with occupancy less than 0.9.

Mol	Type	Chain	Res	Atoms	RSCC	RSR	B-factors(Å ²)	Q<0.9
3	BEZ	A	801	9/9	0.99	0.05	12,13,15,15	9
3	BEZ	B	802	9/9	0.99	0.04	13,19,21,21	9

6.5 Other polymers [i](#)

There are no such residues in this entry.