



Full wwPDB NMR Structure Validation Report ⓘ

Dec 24, 2024 – 11:37 PM EST

PDB ID : 2MU4
BMRB ID : 25168
Title : Structure of F. tularensis Virulence Determinant
Authors : Zook, J.J.D.Z.; Mo, G.G.M.; Craciunescu, F.F.C.; Sisco, N.N.S.; Hansen, D.D.H.; Baravati, B.B.B.; Van Horn, W.W.V.H.; Cherry, B.B.C.; Fromme, P.P.F.
Deposited on : 2014-09-03

This is a Full wwPDB NMR Structure Validation Report for a publicly released PDB entry.

We welcome your comments at validation@mail.wwpdb.org

A user guide is available at

<https://www.wwpdb.org/validation/2017/NMRValidationReportHelp>

with specific help available everywhere you see the ⓘ symbol.

The types of validation reports are described at

<http://www.wwpdb.org/validation/2017/FAQs#types>.

The following versions of software and data (see [references ⓘ](#)) were used in the production of this report:

MolProbity : 4.02b-467
Percentile statistics : 20231227.v01 (using entries in the PDB archive December 27th 2023)
wwPDB-RCI : v_1n_11_5_13_A (Berjanski et al., 2005)
PANAV : Wang et al. (2010)
wwPDB-ShiftChecker : v1.2
BMRB Restraints Analysis : v1.2
Ideal geometry (proteins) : Engh & Huber (2001)
Ideal geometry (DNA, RNA) : Parkinson et al. (1996)
Validation Pipeline (wwPDB-VP) : 2.40

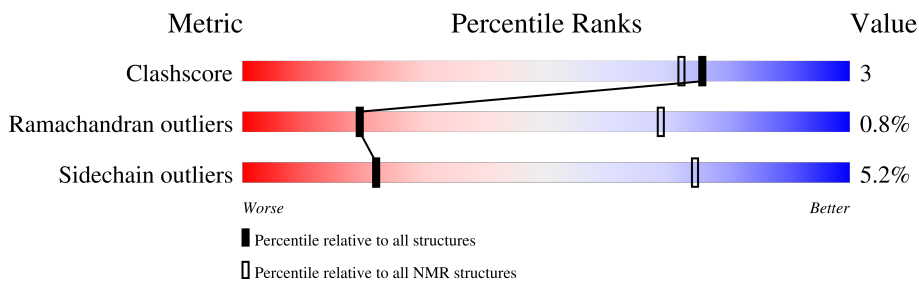
1 Overall quality at a glance

The following experimental techniques were used to determine the structure:

SOLUTION NMR

The overall completeness of chemical shifts assignment is 80%.

Percentile scores (ranging between 0-100) for global validation metrics of the entry are shown in the following graphic. The table shows the number of entries on which the scores are based.



Metric	Whole archive (#Entries)	NMR archive (#Entries)
Clashscore	210492	14027
Ramachandran outliers	207382	12486
Sidechain outliers	206894	12463

The table below summarises the geometric issues observed across the polymeric chains and their fit to the experimental data. The red, orange, yellow and green segments indicate the fraction of residues that contain outliers for ≥ 3 , 2, 1 and 0 types of geometric quality criteria. A cyan segment indicates the fraction of residues that are not part of the well-defined cores, and a grey segment represents the fraction of residues that are not modelled. The numeric value for each fraction is indicated below the corresponding segment, with a dot representing fractions $\leq 5\%$

Mol	Chain	Length	Quality of chain
1	A	119	86% . 6% .

2 Ensemble composition and analysis i

This entry contains 20 models. Model 11 is the overall representative, medoid model (most similar to other models). The authors have identified model 1 as representative, based on the following criterion: *lowest energy*.

The following residues are included in the computation of the global validation metrics.

Well-defined (core) protein residues			
Well-defined core	Residue range (total)	Backbone RMSD (Å)	Medoid model
1	A:6-A:112 (107)	0.94	11

Ill-defined regions of proteins are excluded from the global statistics.

Ligands and non-protein polymers are included in the analysis.

The models can be grouped into 5 clusters and 3 single-model clusters were found.

Cluster number	Models
1	4, 5, 9, 11, 15, 16, 18
2	3, 7, 13, 17
3	12, 19
4	1, 8
5	14, 20
Single-model clusters	2; 6; 10

3 Entry composition

There is only 1 type of molecule in this entry. The entry contains 1733 atoms, of which 849 are hydrogens and 0 are deuteriums.

- Molecule 1 is a protein called flpp3Sol_2.

Mol	Chain	Residues	Atoms						Trace
			Total	C	H	N	O	S	
1	A	114	1733	545	849	152	185	2	0

There are 7 discrepancies between the modelled and reference sequences:

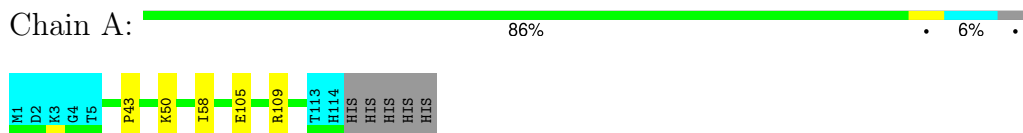
Chain	Residue	Modelled	Actual	Comment	Reference
A	1	MET	-	expression tag	UNP Q5NF33
A	114	HIS	-	expression tag	UNP Q5NF33
A	115	HIS	-	expression tag	UNP Q5NF33
A	116	HIS	-	expression tag	UNP Q5NF33
A	117	HIS	-	expression tag	UNP Q5NF33
A	118	HIS	-	expression tag	UNP Q5NF33
A	119	HIS	-	expression tag	UNP Q5NF33

4 Residue-property plots [i](#)

4.1 Average score per residue in the NMR ensemble

These plots are provided for all protein, RNA, DNA and oligosaccharide chains in the entry. The first graphic is the same as shown in the summary in section 1 of this report. The second graphic shows the sequence where residues are colour-coded according to the number of geometric quality criteria for which they contain at least one outlier: green = 0, yellow = 1, orange = 2 and red = 3 or more. Stretches of 2 or more consecutive residues without any outliers are shown as green connectors. Residues which are classified as ill-defined in the NMR ensemble, are shown in cyan with an underline colour-coded according to the previous scheme. Residues which were present in the experimental sample, but not modelled in the final structure are shown in grey.

- Molecule 1: flpp3Sol_2

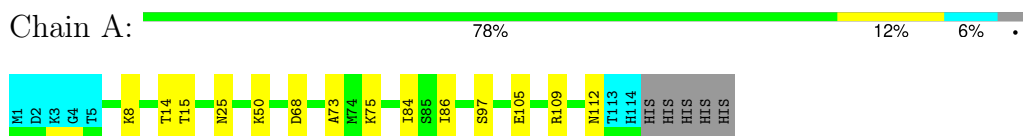


4.2 Scores per residue for each member of the ensemble

Colouring as in section 4.1 above.

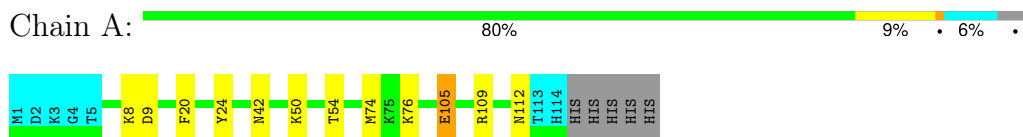
4.2.1 Score per residue for model 1

- Molecule 1: flpp3Sol_2



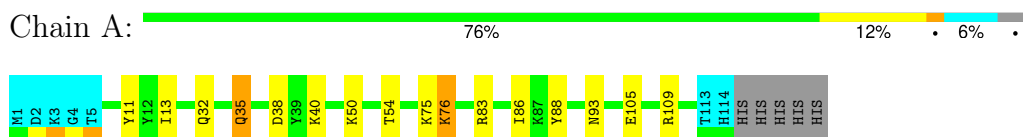
4.2.2 Score per residue for model 2

- Molecule 1: flpp3Sol_2



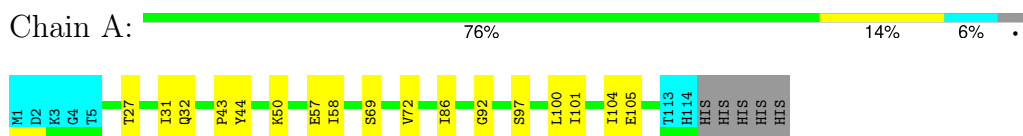
4.2.3 Score per residue for model 3

- Molecule 1: fpp3Sol_2



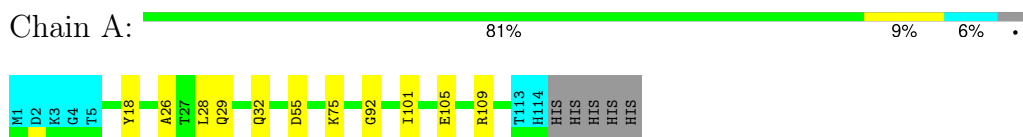
4.2.4 Score per residue for model 4

- Molecule 1: fpp3Sol_2



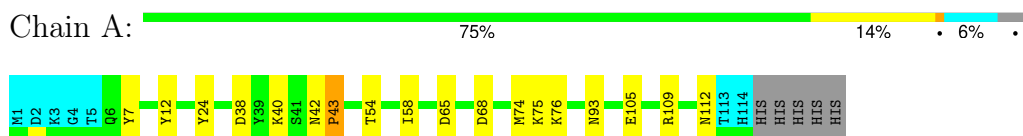
4.2.5 Score per residue for model 5

- Molecule 1: fpp3Sol_2



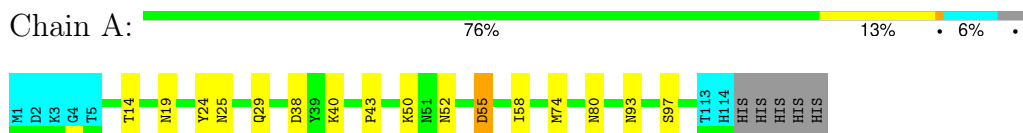
4.2.6 Score per residue for model 6

- Molecule 1: fpp3Sol_2



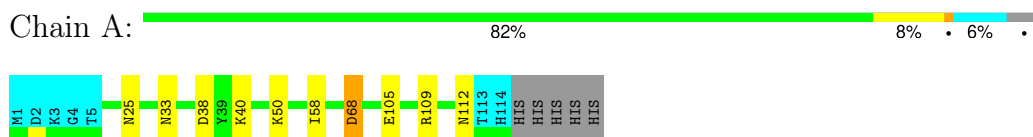
4.2.7 Score per residue for model 7

- Molecule 1: fpp3Sol_2



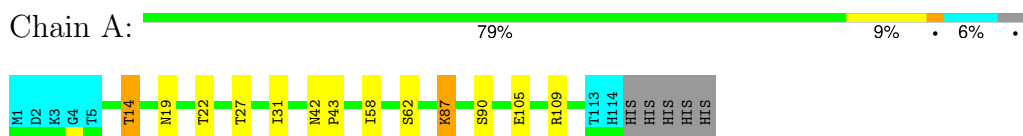
4.2.8 Score per residue for model 8

- Molecule 1: fpp3Sol_2



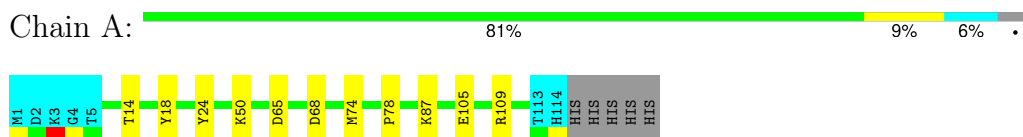
4.2.9 Score per residue for model 9

- Molecule 1: fpp3Sol_2



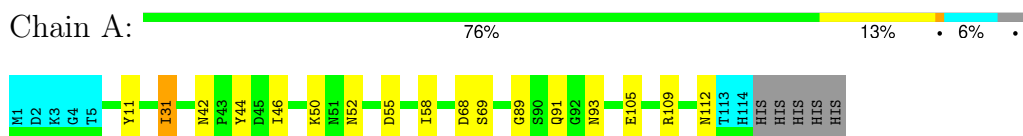
4.2.10 Score per residue for model 10

- Molecule 1: fpp3Sol_2



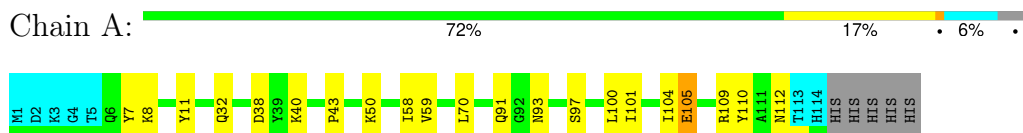
4.2.11 Score per residue for model 11 (medoid)

- Molecule 1: fpp3Sol_2



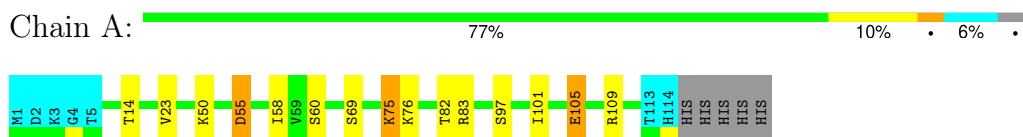
4.2.12 Score per residue for model 12

- Molecule 1: fpp3Sol_2



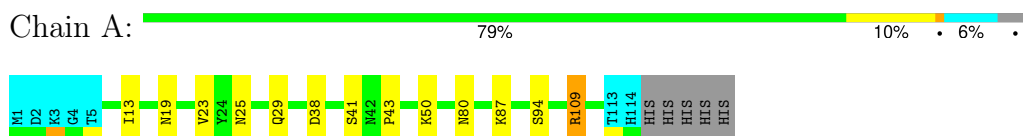
4.2.13 Score per residue for model 13

- Molecule 1: fpp3Sol_2



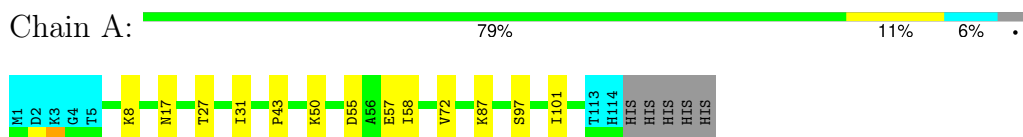
4.2.14 Score per residue for model 14

- Molecule 1: fpp3Sol_2



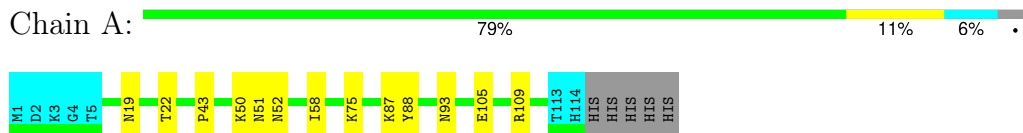
4.2.15 Score per residue for model 15

- Molecule 1: fpp3Sol_2



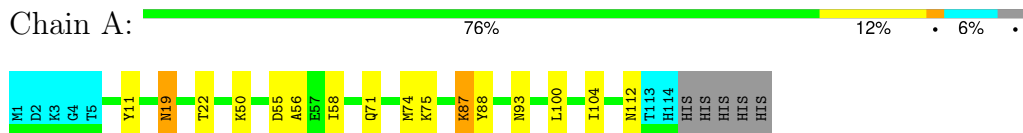
4.2.16 Score per residue for model 16

- Molecule 1: fpp3Sol_2



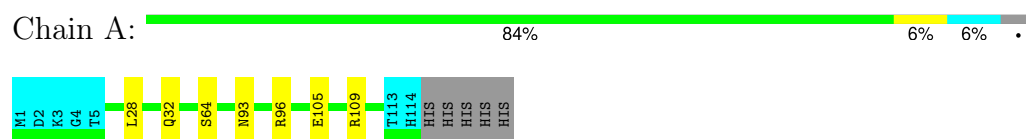
4.2.17 Score per residue for model 17

- Molecule 1: fpp3Sol_2



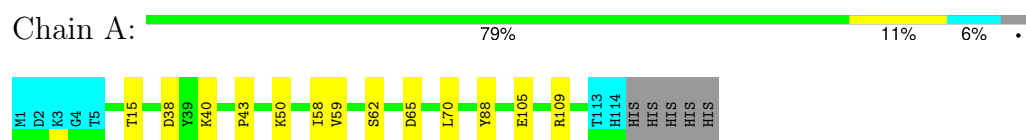
4.2.18 Score per residue for model 18

- Molecule 1: fpp3Sol_2



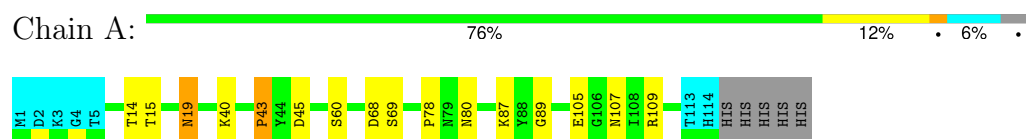
4.2.19 Score per residue for model 19

- Molecule 1: fpp3Sol_2



4.2.20 Score per residue for model 20

- Molecule 1: fpp3Sol_2



5 Refinement protocol and experimental data overview

The models were refined using the following method: *molecular dynamics*.

Of the 200 calculated structures, 20 were deposited, based on the following criterion: *structures with the lowest energy*.

The following table shows the software used for structure solution, optimisation and refinement.

Software name	Classification	Version
CNS	refinement	

The following table shows chemical shift validation statistics as aggregates over all chemical shift files. Detailed validation can be found in section 7 of this report.

Chemical shift file(s)	working_cs.cif
Number of chemical shift lists	1
Total number of shifts	1179
Number of shifts mapped to atoms	1169
Number of unparsed shifts	0
Number of shifts with mapping errors	10
Number of shifts with mapping warnings	0
Assignment completeness (well-defined parts)	80%

6 Model quality [i](#)

6.1 Standard geometry [i](#)

The Z score for a bond length (or angle) is the number of standard deviations the observed value is removed from the expected value. A bond length (or angle) with $|Z| > 5$ is considered an outlier worth inspection. RMSZ is the (average) root-mean-square of all Z scores of the bond lengths (or angles).

Mol	Chain	Bond lengths		Bond angles	
		RMSZ	#Z>5	RMSZ	#Z>5
1	A	0.79±0.03	0±0/844 (0.0± 0.0%)	0.68±0.03	0±0/1146 (0.0± 0.0%)
All	All	0.79	0/16880 (0.0%)	0.68	1/22920 (0.0%)

There are no bond-length outliers.

All unique angle outliers are listed below.

Mol	Chain	Res	Type	Atoms	Z	Observed(°)	Ideal(°)	Models	
								Worst	Total
1	A	43	PRO	N-CA-CB	-5.73	96.30	102.60	20	1

There are no chirality outliers.

There are no planarity outliers.

6.2 Too-close contacts [i](#)

In the following table, the Non-H and H(model) columns list the number of non-hydrogen atoms and hydrogen atoms in each chain respectively. The H(added) column lists the number of hydrogen atoms added and optimized by MolProbity. The Clashes column lists the number of clashes averaged over the ensemble.

Mol	Chain	Non-H	H(model)	H(added)	Clashes
1	A	831	800	800	5±1
All	All	16620	16000	16000	96

The all-atom clashscore is defined as the number of clashes found per 1000 atoms (including hydrogen atoms). The all-atom clashscore for this structure is 3.

All unique clashes are listed below, sorted by their clash magnitude.

Atom-1	Atom-2	Clash(Å)	Distance(Å)	Models	
				Worst	Total
1:A:38:ASP:OD1	1:A:40:LYS:HG2	0.56	2.01	19	3

Continued on next page...

Continued from previous page...

Atom-1	Atom-2	Clash(Å)	Distance(Å)	Models	
				Worst	Total
1:A:19:ASN:HA	1:A:80:ASN:O	0.56	2.01	14	3
1:A:105:GLU:O	1:A:109:ARG:HG3	0.55	2.01	1	12
1:A:93:ASN:HB2	1:A:97:SER:OG	0.53	2.04	7	1
1:A:19:ASN:O	1:A:22:THR:HB	0.52	2.03	17	3
1:A:68:ASP:OD1	1:A:89:GLY:HA3	0.52	2.05	20	2
1:A:31:ILE:HD11	1:A:44:TYR:O	0.51	2.05	11	2
1:A:38:ASP:OD2	1:A:40:LYS:HG2	0.51	2.05	7	3
1:A:56:ALA:O	1:A:74:MET:HB2	0.51	2.06	17	1
1:A:42:ASN:ND2	1:A:62:SER:HA	0.50	2.21	9	1
1:A:27:THR:O	1:A:31:ILE:HG22	0.49	2.08	9	3
1:A:76:LYS:NZ	1:A:76:LYS:HB3	0.48	2.23	3	2
1:A:105:GLU:O	1:A:109:ARG:HG2	0.48	2.09	8	3
1:A:35:GLN:HE21	1:A:35:GLN:HA	0.48	1.67	3	1
1:A:86:ILE:HG21	1:A:97:SER:OG	0.48	2.09	4	2
1:A:59:VAL:HA	1:A:70:LEU:O	0.48	2.08	12	2
1:A:55:ASP:OD2	1:A:75:LYS:HB3	0.48	2.08	13	1
1:A:26:ALA:HA	1:A:29:GLN:NE2	0.47	2.25	5	1
1:A:28:LEU:O	1:A:32:GLN:HG2	0.47	2.09	5	2
1:A:26:ALA:HA	1:A:29:GLN:HE21	0.47	1.70	5	1
1:A:65:ASP:CB	1:A:68:ASP:HB3	0.47	2.40	10	1
1:A:97:SER:O	1:A:101:ILE:HG12	0.47	2.10	15	4
1:A:11:TYR:HA	1:A:93:ASN:OD1	0.46	2.10	11	1
1:A:54:THR:O	1:A:76:LYS:HE3	0.46	2.09	6	1
1:A:65:ASP:HB3	1:A:68:ASP:HB3	0.46	1.86	10	2
1:A:24:TYR:HA	1:A:74:MET:SD	0.46	2.51	2	4
1:A:45:ASP:O	1:A:60:SER:HA	0.46	2.11	20	1
1:A:100:LEU:O	1:A:104:ILE:HG13	0.46	2.11	4	3
1:A:71:GLN:HB3	1:A:87:LYS:HG3	0.46	1.86	17	1
1:A:60:SER:O	1:A:69:SER:HB3	0.46	2.11	13	1
1:A:75:LYS:HG2	1:A:83:ARG:O	0.45	2.11	3	1
1:A:8:LYS:HG2	1:A:9:ASP:OD2	0.45	2.12	2	1
1:A:52:ASN:HB2	1:A:55:ASP:HB2	0.45	1.87	7	1
1:A:88:TYR:HB2	1:A:93:ASN:HB2	0.45	1.89	17	1
1:A:25:ASN:O	1:A:29:GLN:HG2	0.44	2.11	14	1
1:A:88:TYR:HA	1:A:93:ASN:ND2	0.44	2.28	16	1
1:A:57:GLU:HA	1:A:72:VAL:O	0.44	2.13	4	2
1:A:42:ASN:HD21	1:A:62:SER:HA	0.44	1.73	9	1
1:A:93:ASN:OD1	1:A:96:ARG:HD2	0.44	2.13	18	1
1:A:23:VAL:HG21	1:A:82:THR:HG21	0.43	1.90	13	1
1:A:55:ASP:HB3	1:A:75:LYS:HD2	0.43	1.90	5	1
1:A:31:ILE:HD12	1:A:46:ILE:HG13	0.42	1.91	11	1

Continued on next page...

Continued from previous page...

Atom-1	Atom-2	Clash(Å)	Distance(Å)	Models	
				Worst	Total
1:A:12:TYR:N	1:A:93:ASN:HD21	0.42	2.13	6	1
1:A:73:ALA:O	1:A:84:ILE:HA	0.42	2.15	1	1
1:A:101:ILE:O	1:A:105:GLU:HG2	0.42	2.15	5	1
1:A:11:TYR:HA	1:A:86:ILE:O	0.42	2.15	3	1
1:A:42:ASN:OD1	1:A:43:PRO:HD2	0.41	2.15	6	1
1:A:25:ASN:O	1:A:29:GLN:HG3	0.41	2.15	7	1
1:A:52:ASN:HB2	1:A:55:ASP:OD1	0.41	2.15	11	1
1:A:76:LYS:HB3	1:A:76:LYS:NZ	0.41	2.31	13	1
1:A:20:PHE:CG	1:A:76:LYS:HG3	0.41	2.50	2	1
1:A:14:THR:O	1:A:83:ARG:HD3	0.41	2.15	13	1
1:A:87:LYS:O	1:A:87:LYS:HD3	0.41	2.16	9	1
1:A:8:LYS:O	1:A:11:TYR:HB3	0.41	2.15	12	1
1:A:38:ASP:H	1:A:41:SER:HA	0.41	1.75	14	1
1:A:19:ASN:O	1:A:23:VAL:HG23	0.40	2.16	14	1
1:A:62:SER:HB2	1:A:65:ASP:O	0.40	2.16	19	1

6.3 Torsion angles [i](#)

6.3.1 Protein backbone [i](#)

In the following table, the Percentiles column shows the percent Ramachandran outliers of the chain as a percentile score with respect to all PDB entries followed by that with respect to all NMR entries. The Analysed column shows the number of residues for which the backbone conformation was analysed and the total number of residues.

Mol	Chain	Analysed	Favoured	Allowed	Outliers	Percentiles	
1	A	107/119 (90%)	104±1 (97±1%)	2±1 (2±1%)	1±1 (1±1%)	19	69
All	All	2140/2380 (90%)	2084 (97%)	39 (2%)	17 (1%)	19	69

All 5 unique Ramachandran outliers are listed below. They are sorted by the frequency of occurrence in the ensemble.

Mol	Chain	Res	Type	Models (Total)
1	A	43	PRO	10
1	A	68	ASP	2
1	A	92	GLY	2
1	A	78	PRO	2
1	A	54	THR	1

6.3.2 Protein sidechains [i](#)

In the following table, the Percentiles column shows the percent sidechain outliers of the chain as a percentile score with respect to all PDB entries followed by that with respect to all NMR entries. The Analysed column shows the number of residues for which the sidechain conformation was analysed and the total number of residues.

Mol	Chain	Analysed	Rotameric	Outliers	Percentiles
1	A	92/103 (89%)	87±2 (95±2%)	5±2 (5±2%)	22 74
All	All	1840/2060 (89%)	1745 (95%)	95 (5%)	22 74

All 35 unique residues with a non-rotameric sidechain are listed below. They are sorted by the frequency of occurrence in the ensemble.

Mol	Chain	Res	Type	Models (Total)
1	A	50	LYS	15
1	A	58	ILE	12
1	A	112	ASN	7
1	A	87	LYS	7
1	A	75	LYS	5
1	A	105	GLU	4
1	A	55	ASP	4
1	A	32	GLN	3
1	A	69	SER	3
1	A	8	LYS	2
1	A	25	ASN	2
1	A	42	ASN	2
1	A	88	TYR	2
1	A	93	ASN	2
1	A	18	TYR	2
1	A	7	TYR	2
1	A	91	GLN	2
1	A	19	ASN	2
1	A	35	GLN	1
1	A	54	THR	1
1	A	76	LYS	1
1	A	33	ASN	1
1	A	68	ASP	1
1	A	14	THR	1
1	A	90	SER	1
1	A	31	ILE	1
1	A	94	SER	1
1	A	109	ARG	1
1	A	17	ASN	1

Continued on next page...

Continued from previous page...

Mol	Chain	Res	Type	Models (Total)
1	A	51	ASN	1
1	A	52	ASN	1
1	A	11	TYR	1
1	A	64	SER	1
1	A	40	LYS	1
1	A	107	ASN	1

6.3.3 RNA [i](#)

There are no RNA molecules in this entry.

6.4 Non-standard residues in protein, DNA, RNA chains [i](#)

There are no non-standard protein/DNA/RNA residues in this entry.

6.5 Carbohydrates [i](#)

There are no oligosaccharides in this entry.

6.6 Ligand geometry [i](#)

There are no ligands in this entry.

6.7 Other polymers [i](#)

There are no such molecules in this entry.

6.8 Polymer linkage issues [i](#)

There are no chain breaks in this entry.

7 Chemical shift validation [i](#)

The completeness of assignment taking into account all chemical shift lists is 80% for the well-defined parts and 79% for the entire structure.

7.1 Chemical shift list 1

File name: working_cs.cif

Chemical shift list name: *assigned_chem_shift_list*

7.1.1 Bookkeeping [i](#)

The following table shows the results of parsing the chemical shift list and reports the number of nuclei with statistically unusual chemical shifts.

Total number of shifts	1179
Number of shifts mapped to atoms	1169
Number of unparsed shifts	0
Number of shifts with mapping errors	10
Number of shifts with mapping warnings	0
Number of shift outliers (ShiftChecker)	1

The following assigned chemical shifts were not mapped to the molecules present in the coordinate file.

- No matching atom found in the structure. All 10 occurrences are reported below.

List ID	Chain	Res	Type	Atom	Shift Data		
					Value	Uncertainty	Ambiguity
1	A	115	HIS	H	8.123	0.001	1
1	A	115	HIS	C	179.129	.	1
1	A	115	HIS	CA	57.098	0.001	1
1	A	115	HIS	N	124.619	0.03	1
1	A	116	HIS	H	8.123	.	1
1	A	116	HIS	N	124.615	.	1
1	A	117	HIS	H	8.123	.	1
1	A	117	HIS	N	124.615	.	1
1	A	118	HIS	H	8.123	.	1
1	A	118	HIS	N	124.615	.	1

7.1.2 Chemical shift referencing [i](#)

The following table shows the suggested chemical shift referencing corrections.

Nucleus	# values	Correction \pm precision, ppm	Suggested action
$^{13}\text{C}_\alpha$	112	-0.18 \pm 0.08	None needed (< 0.5 ppm)
$^{13}\text{C}_\beta$	101	0.16 \pm 0.18	None needed (< 0.5 ppm)
$^{13}\text{C}'$	110	0.06 \pm 0.20	None needed (< 0.5 ppm)
^{15}N	112	0.22 \pm 0.38	None needed (< 0.5 ppm)

7.1.3 Completeness of resonance assignments [i](#)

The following table shows the completeness of the chemical shift assignments for the well-defined regions of the structure. The overall completeness is 80%, i.e. 1114 atoms were assigned a chemical shift out of a possible 1396. 0 out of 9 assigned methyl groups (LEU and VAL) were assigned stereospecifically.

	Total	^1H	^{13}C	^{15}N
Backbone	522/538 (97%)	211/219 (96%)	208/214 (97%)	103/105 (98%)
Sidechain	592/757 (78%)	403/488 (83%)	189/234 (81%)	0/35 (0%)
Aromatic	0/101 (0%)	0/46 (0%)	0/55 (0%)	0/0 (—%)
Overall	1114/1396 (80%)	614/753 (82%)	397/503 (79%)	103/140 (74%)

The following table shows the completeness of the chemical shift assignments for the full structure. The overall completeness is 79%, i.e. 1169 atoms were assigned a chemical shift out of a possible 1481. 0 out of 9 assigned methyl groups (LEU and VAL) were assigned stereospecifically.

	Total	^1H	^{13}C	^{15}N
Backbone	550/574 (96%)	222/234 (95%)	220/228 (96%)	108/112 (96%)
Sidechain	619/799 (77%)	420/515 (82%)	199/248 (80%)	0/36 (0%)
Aromatic	0/108 (0%)	0/50 (0%)	0/57 (0%)	0/1 (0%)
Overall	1169/1481 (79%)	642/799 (80%)	419/533 (79%)	108/149 (72%)

7.1.4 Statistically unusual chemical shifts [i](#)

The following table lists the statistically unusual chemical shifts. These are statistical measures, and large deviations from the mean do not necessarily imply incorrect assignments. Molecules containing paramagnetic centres or hemes are expected to give rise to anomalous chemical shifts.

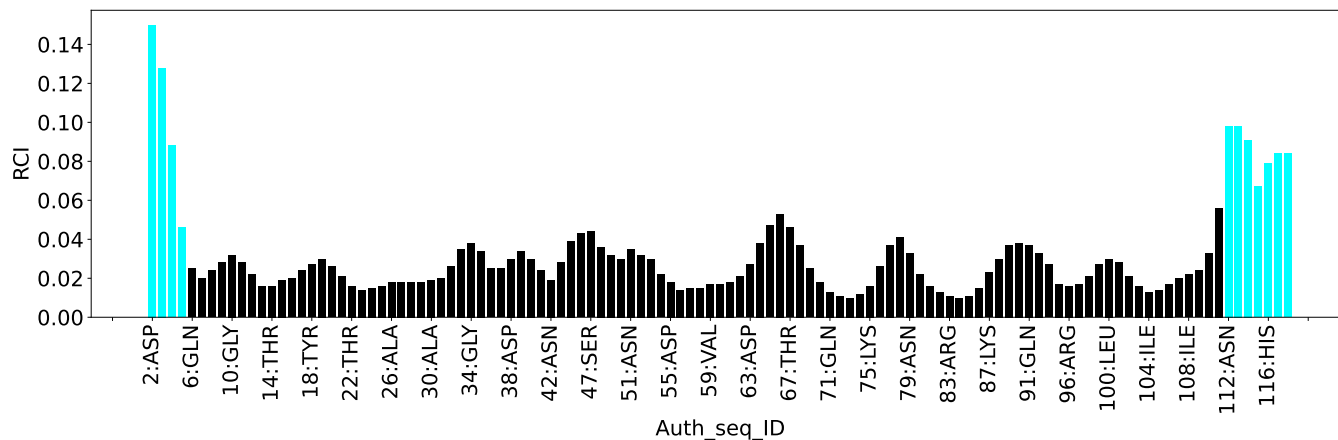
List Id	Chain	Res	Type	Atom	Shift, ppm	Expected range, ppm	Z-score
1	A	87	LYS	HD2	0.53	0.58 – 2.64	-5.2

7.1.5 Random Coil Index (RCI) plots [i](#)

The image below reports *random coil index* values for the protein chains in the structure. The height of each bar gives a probability of a given residue to be disordered, as predicted from the available chemical shifts and the amino acid sequence. A value above 0.2 is an indication

of significant predicted disorder. The colour of the bar shows whether the residue is in the well-defined core (black) or in the ill-defined residue ranges (cyan), as described in section 2 on ensemble composition. If well-defined core and ill-defined regions are not identified then it is shown as gray bars.

Random coil index (RCI) for chain A:



8 NMR restraints analysis

8.1 Conformationally restricting restraints

The following table provides the summary of experimentally observed NMR restraints in different categories. Restraints are classified into different categories based on the sequence separation of the atoms involved.

Description	Value
Total distance restraints	2175
Intra-residue ($ i-j =0$)	449
Sequential ($ i-j =1$)	672
Medium range ($ i-j >1$ and $ i-j <5$)	404
Long range ($ i-j \geq 5$)	650
Inter-chain	0
Hydrogen bond restraints	0
Disulfide bond restraints	0
Total dihedral-angle restraints	192
Number of unmapped restraints	0
Number of restraints per residue	19.9
Number of long range restraints per residue ¹	5.5

¹Long range hydrogen bonds and disulfide bonds are counted as long range restraints while calculating the number of long range restraints per residue

8.2 Residual restraint violations

This section provides the overview of the restraint violations analysis. The violations are binned as small, medium and large violations based on its absolute value. Average number of violations per model is calculated by dividing the total number of violations in each bin by the size of the ensemble.

8.2.1 Average number of distance violations per model

Distance violations less than 0.1 Å are not included in the calculation.

Bins (Å)	Average number of violations per model	Max (Å)
0.1-0.2 (Small)	5.9	0.2
0.2-0.5 (Medium)	0.2	0.24
>0.5 (Large)	None	None

8.2.2 Average number of dihedral-angle violations per model [i](#)

Dihedral-angle violations less than 1° are not included in the calculation.

Bins (°)	Average number of violations per model	Max (°)
1.0-10.0 (Small)	35.5	7.93
10.0-20.0 (Medium)	None	None
>20.0 (Large)	None	None

9 Distance violation analysis [i](#)

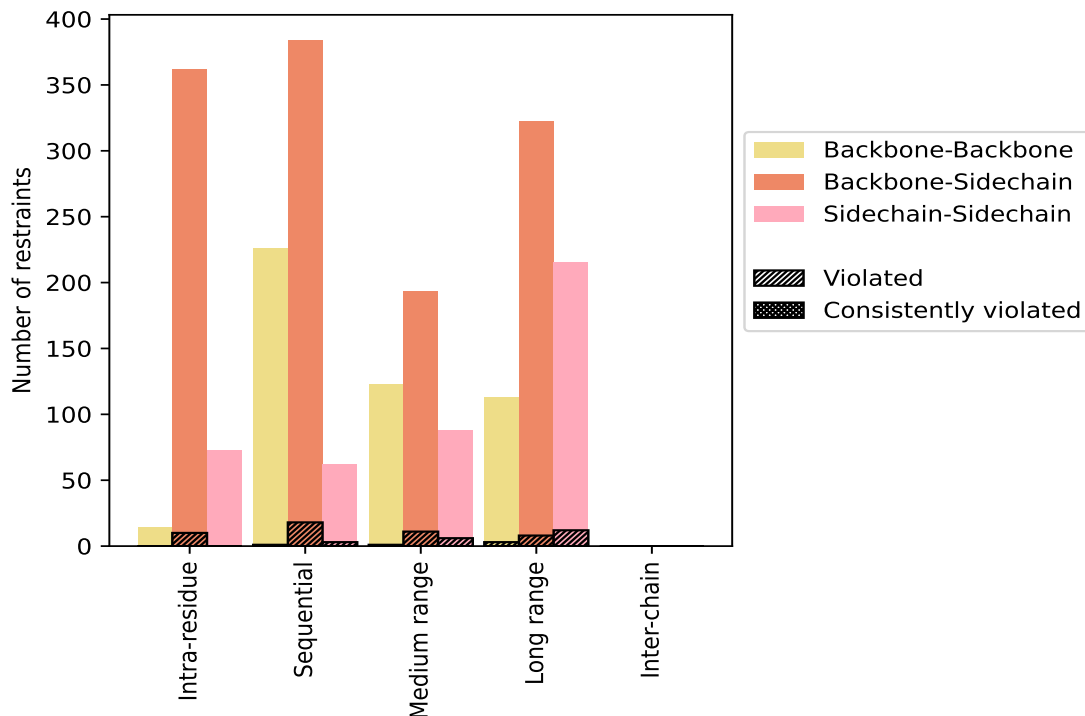
9.1 Summary of distance violations [i](#)

The following table shows the summary of distance violations in different restraint categories based on the sequence separation of the atoms involved. Each category is further sub-divided into three sub-categories based on the atoms involved. Violations less than 0.1 Å are not included in the statistics.

Restrains type	Count	% ¹	Violated ³			Consistently Violated ⁴		
			Count	% ²	% ¹	Count	% ²	% ¹
Intra-residue (i-j =0)	449	20.6	10	2.2	0.5	0	0.0	0.0
Backbone-Backbone	14	0.6	0	0.0	0.0	0	0.0	0.0
Backbone-Sidechain	362	16.6	10	2.8	0.5	0	0.0	0.0
Sidechain-Sidechain	73	3.4	0	0.0	0.0	0	0.0	0.0
Sequential (i-j =1)	672	30.9	22	3.3	1.0	0	0.0	0.0
Backbone-Backbone	226	10.4	1	0.4	0.0	0	0.0	0.0
Backbone-Sidechain	384	17.7	18	4.7	0.8	0	0.0	0.0
Sidechain-Sidechain	62	2.9	3	4.8	0.1	0	0.0	0.0
Medium range (i-j >1 & i-j <5)	404	18.6	18	4.5	0.8	0	0.0	0.0
Backbone-Backbone	123	5.7	1	0.8	0.0	0	0.0	0.0
Backbone-Sidechain	193	8.9	11	5.7	0.5	0	0.0	0.0
Sidechain-Sidechain	88	4.0	6	6.8	0.3	0	0.0	0.0
Long range (i-j ≥5)	650	29.9	23	3.5	1.1	0	0.0	0.0
Backbone-Backbone	113	5.2	3	2.7	0.1	0	0.0	0.0
Backbone-Sidechain	322	14.8	8	2.5	0.4	0	0.0	0.0
Sidechain-Sidechain	215	9.9	12	5.6	0.6	0	0.0	0.0
Inter-chain	0	0.0	0	0.0	0.0	0	0.0	0.0
Backbone-Backbone	0	0.0	0	0.0	0.0	0	0.0	0.0
Backbone-Sidechain	0	0.0	0	0.0	0.0	0	0.0	0.0
Sidechain-Sidechain	0	0.0	0	0.0	0.0	0	0.0	0.0
Hydrogen bond	0	0.0	0	0.0	0.0	0	0.0	0.0
Disulfide bond	0	0.0	0	0.0	0.0	0	0.0	0.0
Total	2175	100.0	73	3.4	3.4	0	0.0	0.0
Backbone-Backbone	476	21.9	5	1.1	0.2	0	0.0	0.0
Backbone-Sidechain	1261	58.0	47	3.7	2.2	0	0.0	0.0
Sidechain-Sidechain	438	20.1	21	4.8	1.0	0	0.0	0.0

¹ percentage calculated with respect to the total number of distance restraints, ² percentage calculated with respect to the number of restraints in a particular restraint category, ³ violated in at least one model, ⁴ violated in all the models

9.1.1 Bar chart : Distribution of distance restraints and violations [i](#)



Violated and consistently violated restraints are shown using different hatch patterns in their respective categories. The hydrogen bonds and disulfid bonds are counted in their appropriate category on the x-axis

9.2 Distance violation statistics for each model [i](#)

The following table provides the distance violation statistics for each model in the ensemble. Violations less than 0.1 Å are not included in the statistics.

Model ID	Number of violations						Mean (Å)	Max (Å)	SD ⁶ (Å)	Median (Å)
	IR ¹	SQ ²	MR ³	LR ⁴	IC ⁵	Total				
1	1	2	1	0	0	4	0.14	0.17	0.02	0.15
2	1	3	1	2	0	7	0.14	0.21	0.04	0.13
3	0	3	1	4	0	8	0.12	0.16	0.02	0.11
4	2	2	0	0	0	4	0.12	0.13	0.01	0.12
5	0	4	2	2	0	8	0.12	0.17	0.02	0.12
6	1	4	0	1	0	6	0.15	0.19	0.03	0.15
7	1	1	0	1	0	3	0.17	0.24	0.05	0.15
8	4	1	0	1	0	6	0.12	0.16	0.02	0.12
9	3	5	1	1	0	10	0.13	0.19	0.03	0.13
10	1	1	4	2	0	8	0.13	0.19	0.03	0.12

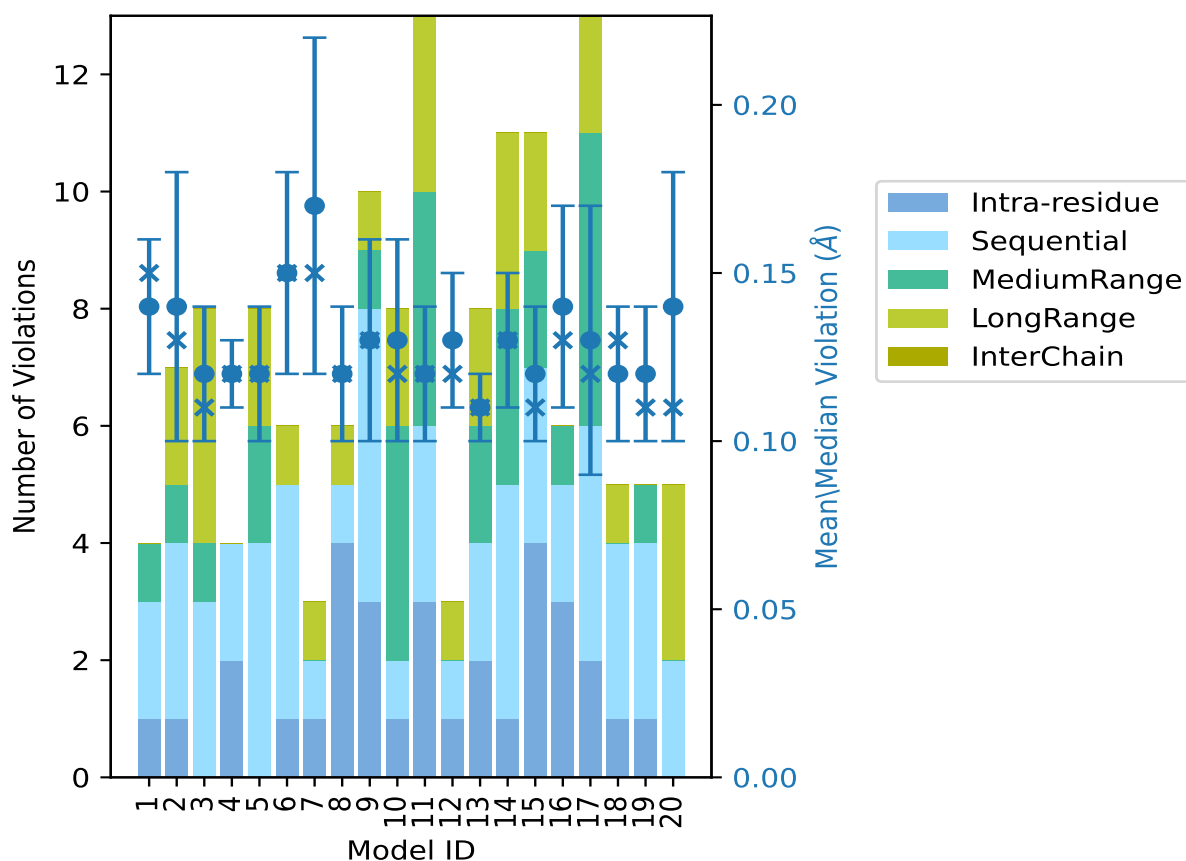
Continued on next page...

Continued from previous page...

Model ID	Number of violations					Total	Mean (Å)	Max (Å)	SD ⁶ (Å)	Median (Å)
	IR ¹	SQ ²	MR ³	LR ⁴	IC ⁵					
11	3	3	4	3	0	13	0.12	0.2	0.02	0.12
12	1	1	0	1	0	3	0.13	0.15	0.02	0.12
13	2	2	2	2	0	8	0.11	0.13	0.01	0.11
14	1	4	3	3	0	11	0.13	0.18	0.02	0.13
15	4	3	2	2	0	11	0.12	0.18	0.02	0.11
16	3	2	1	0	0	6	0.14	0.18	0.03	0.13
17	2	4	5	2	0	13	0.13	0.21	0.04	0.12
18	1	3	0	1	0	5	0.12	0.14	0.02	0.13
19	1	3	1	0	0	5	0.12	0.16	0.02	0.11
20	0	2	0	3	0	5	0.14	0.22	0.04	0.11

¹Intra-residue restraints, ²Sequential restraints, ³Medium range restraints, ⁴Long range restraints, ⁵Inter-chain restraints, ⁶Standard deviation

9.2.1 Bar graph : Distance Violation statistics for each model [i](#)



The mean(dot),median(x) and the standard deviation are shown in blue with respect to the y axis on the right

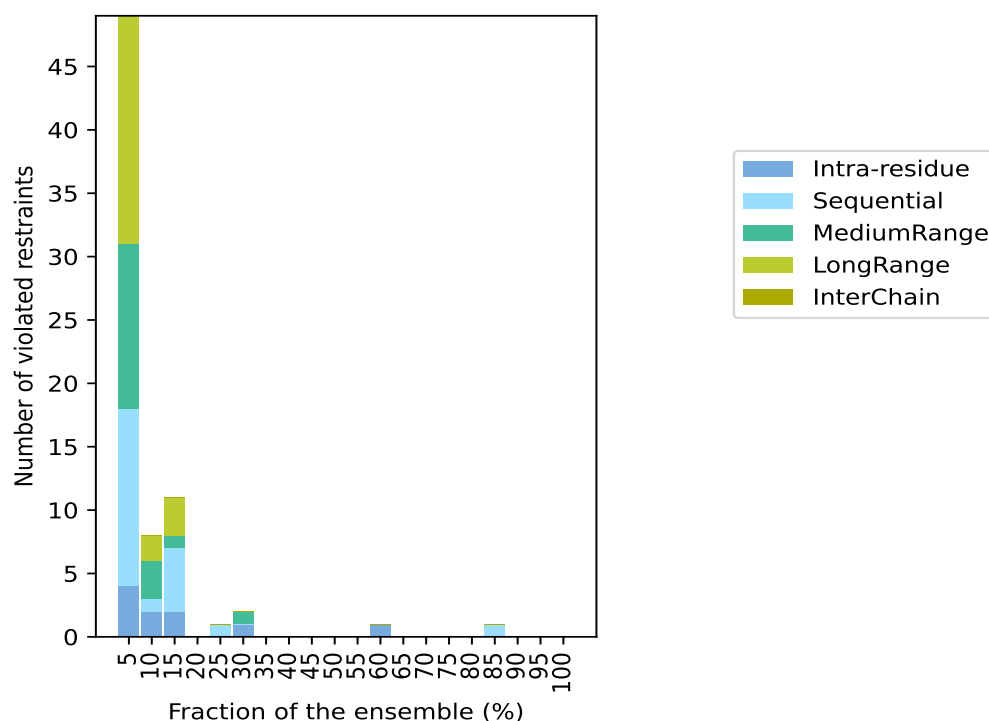
9.3 Distance violation statistics for the ensemble

Violation analysis may find that some restraints are violated in few models and some are violated in most of models. The following table provides this information as number of violated restraints for a given fraction of the ensemble. In total, 2102(IR:439, SQ:650, MR:386, LR:627, IC:0) restraints are not violated in the ensemble.

Number of violated restraints						Fraction of the ensemble	
IR ¹	SQ ²	MR ³	LR ⁴	IC ⁵	Total	Count ⁶	%
4	14	13	18	0	49	1	5.0
2	1	3	2	0	8	2	10.0
2	5	1	3	0	11	3	15.0
0	0	0	0	0	0	4	20.0
0	1	0	0	0	1	5	25.0
1	0	1	0	0	2	6	30.0
0	0	0	0	0	0	7	35.0
0	0	0	0	0	0	8	40.0
0	0	0	0	0	0	9	45.0
0	0	0	0	0	0	10	50.0
0	0	0	0	0	0	11	55.0
1	0	0	0	0	1	12	60.0
0	0	0	0	0	0	13	65.0
0	0	0	0	0	0	14	70.0
0	0	0	0	0	0	15	75.0
0	0	0	0	0	0	16	80.0
0	1	0	0	0	1	17	85.0
0	0	0	0	0	0	18	90.0
0	0	0	0	0	0	19	95.0
0	0	0	0	0	0	20	100.0

¹Intra-residue restraints, ²Sequential restraints, ³Medium range restraints, ⁴Long range restraints, ⁵Inter-chain restraints, ⁶ Number of models with violations

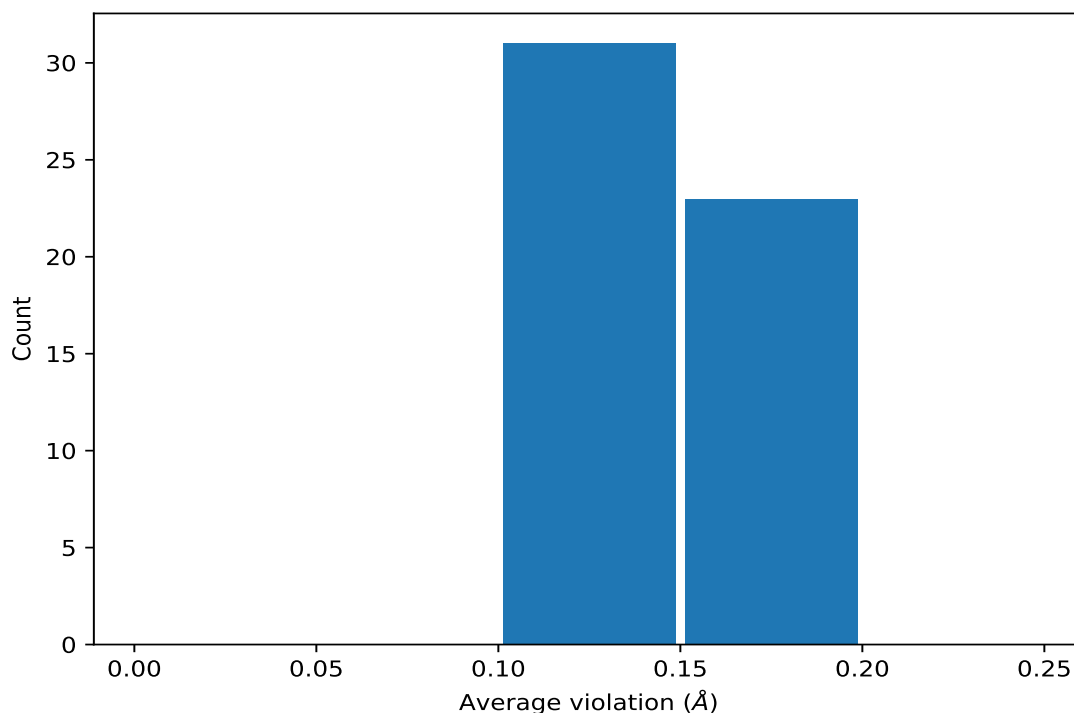
9.3.1 Bar graph : Distance violation statistics for the ensemble [i](#)



9.4 Most violated distance restraints in the ensemble [i](#)

9.4.1 Histogram : Distribution of mean distance violations [i](#)

The following histogram shows the distribution of the average value of the violation. The average is calculated for each restraint that is violated in more than one model over all the violated models in the ensemble



9.4.2 Table: Most violated distance restraints [i](#)

The following table provides the mean and the standard deviation of the violation for each restraint sorted by number of violated models and the mean value. The Key (restraint list ID, restraint ID) is the unique identifier for a given restraint. Rows with same key represent combinatorial or ambiguous restraints and are counted as a single restraint.

Key	Atom-1	Atom-2	Models ¹	Mean (Å)	SD ¹ (Å)	Median (Å)
(1,1970)	1:102:A:GLY:HA2	1:103:A:ILE:HD11	17	0.11	0.01	0.11
(1,1970)	1:102:A:GLY:HA2	1:103:A:ILE:HD12	17	0.11	0.01	0.11
(1,1970)	1:102:A:GLY:HA2	1:103:A:ILE:HD13	17	0.11	0.01	0.11
(1,1314)	1:58:A:ILE:H	1:58:A:ILE:HB	12	0.13	0.02	0.12
(1,1060)	1:48:A:VAL:HG11	1:50:A:LYS:HD2	6	0.16	0.03	0.17
(1,1060)	1:48:A:VAL:HG11	1:50:A:LYS:HD3	6	0.16	0.03	0.17
(1,1060)	1:48:A:VAL:HG12	1:50:A:LYS:HD2	6	0.16	0.03	0.17
(1,1060)	1:48:A:VAL:HG12	1:50:A:LYS:HD3	6	0.16	0.03	0.17
(1,1060)	1:48:A:VAL:HG13	1:50:A:LYS:HD2	6	0.16	0.03	0.17
(1,1060)	1:48:A:VAL:HG13	1:50:A:LYS:HD3	6	0.16	0.03	0.17
(1,1060)	1:48:A:VAL:HG21	1:50:A:LYS:HD2	6	0.16	0.03	0.17
(1,1060)	1:48:A:VAL:HG21	1:50:A:LYS:HD3	6	0.16	0.03	0.17
(1,1060)	1:48:A:VAL:HG22	1:50:A:LYS:HD2	6	0.16	0.03	0.17
(1,1060)	1:48:A:VAL:HG22	1:50:A:LYS:HD3	6	0.16	0.03	0.17
(1,1060)	1:48:A:VAL:HG23	1:50:A:LYS:HD2	6	0.16	0.03	0.17
(1,1060)	1:48:A:VAL:HG23	1:50:A:LYS:HD3	6	0.16	0.03	0.17

Continued on next page...

Continued from previous page...

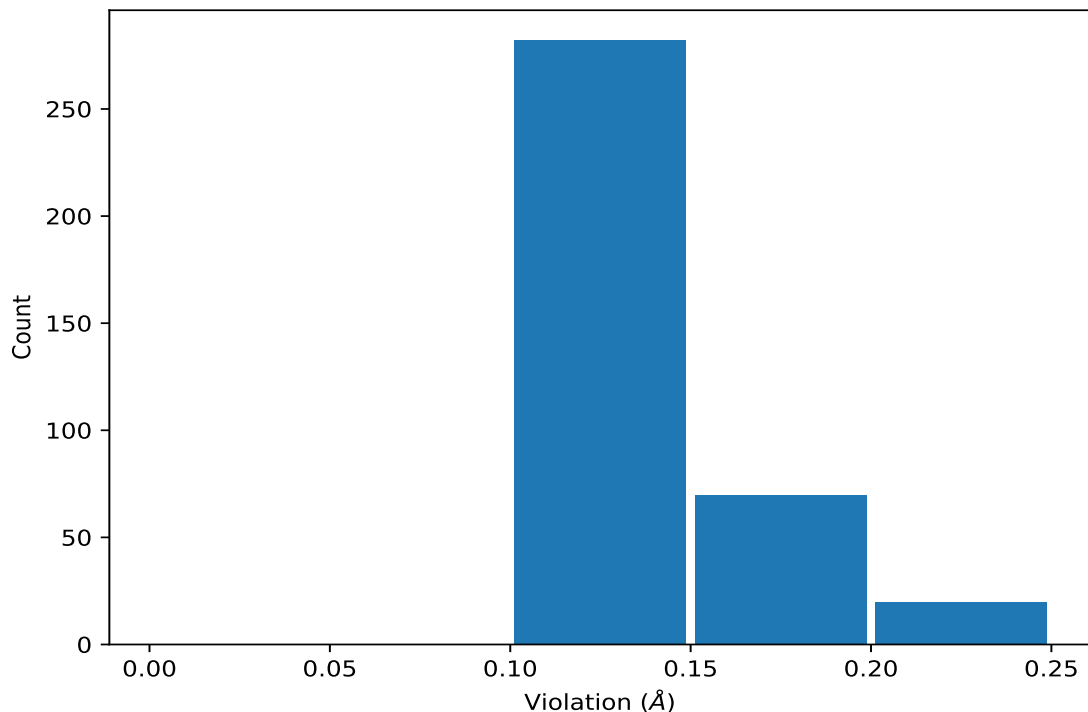
Key	Atom-1	Atom-2	Models ¹	Mean (Å)	SD ¹ (Å)	Median (Å)
(1,1129)	1:50:A:LYS:H	1:50:A:LYS:HB2	6	0.16	0.01	0.16
(1,1100)	1:49:A:ASN:H	1:50:A:LYS:HE2	5	0.14	0.04	0.13
(1,1100)	1:49:A:ASN:H	1:50:A:LYS:HE3	5	0.14	0.04	0.13
(1,484)	1:21:A:ASN:H	1:22:A:THR:HG21	3	0.18	0.01	0.18
(1,484)	1:21:A:ASN:H	1:22:A:THR:HG22	3	0.18	0.01	0.18
(1,484)	1:21:A:ASN:H	1:22:A:THR:HG23	3	0.18	0.01	0.18
(1,1178)	1:53:A:GLY:HA3	1:54:A:THR:HG21	3	0.18	0.02	0.18
(1,1178)	1:53:A:GLY:HA3	1:54:A:THR:HG22	3	0.18	0.02	0.18
(1,1178)	1:53:A:GLY:HA3	1:54:A:THR:HG23	3	0.18	0.02	0.18
(1,964)	1:44:A:TYR:HB2	1:60:A:SER:HB2	3	0.16	0.04	0.15
(1,964)	1:44:A:TYR:HB3	1:60:A:SER:HB2	3	0.16	0.04	0.15
(1,429)	1:20:A:PHE:HB3	1:21:A:ASN:H	3	0.15	0.0	0.15
(1,158)	1:11:A:TYR:H	1:88:A:TYR:HB2	3	0.15	0.06	0.11
(1,158)	1:11:A:TYR:H	1:88:A:TYR:HB3	3	0.15	0.06	0.11
(1,1616)	1:76:A:LYS:HE2	1:77:A:LEU:H	3	0.14	0.02	0.14
(1,1616)	1:76:A:LYS:HE3	1:77:A:LEU:H	3	0.14	0.02	0.14
(1,1624)	1:76:A:LYS:H	1:76:A:LYS:HE2	3	0.12	0.0	0.12
(1,1624)	1:76:A:LYS:H	1:76:A:LYS:HE3	3	0.12	0.0	0.12
(1,463)	1:20:A:PHE:H	1:76:A:LYS:HE2	3	0.12	0.01	0.12
(1,463)	1:20:A:PHE:H	1:76:A:LYS:HE3	3	0.12	0.01	0.12
(1,2074)	1:106:A:GLY:HA3	1:109:A:ARG:HG2	3	0.12	0.0	0.12
(1,1132)	1:50:A:LYS:H	1:50:A:LYS:HG3	3	0.11	0.0	0.11
(1,587)	1:25:A:ASN:HB2	1:26:A:ALA:H	3	0.1	0.0	0.1
(1,946)	1:40:A:LYS:H	1:40:A:LYS:HG2	2	0.16	0.02	0.16
(1,946)	1:40:A:LYS:H	1:40:A:LYS:HG3	2	0.16	0.02	0.16
(1,1590)	1:75:A:LYS:H	1:75:A:LYS:HE2	2	0.14	0.01	0.14
(1,1590)	1:75:A:LYS:H	1:75:A:LYS:HE3	2	0.14	0.01	0.14
(1,1191)	1:54:A:THR:HA	1:75:A:LYS:HA	2	0.12	0.02	0.12
(1,743)	1:29:A:GLN:H	1:46:A:ILE:HD11	2	0.12	0.01	0.12
(1,743)	1:29:A:GLN:H	1:46:A:ILE:HD12	2	0.12	0.01	0.12
(1,743)	1:29:A:GLN:H	1:46:A:ILE:HD13	2	0.12	0.01	0.12
(1,1142)	1:51:A:ASN:HB2	1:52:A:ASN:H	2	0.12	0.01	0.12
(1,1142)	1:51:A:ASN:HB3	1:52:A:ASN:H	2	0.12	0.01	0.12
(1,921)	1:39:A:TYR:HA	1:41:A:SER:HB2	2	0.12	0.0	0.12
(1,741)	1:29:A:GLN:H	1:32:A:GLN:HG2	2	0.11	0.0	0.11
(1,741)	1:29:A:GLN:H	1:32:A:GLN:HG3	2	0.11	0.0	0.11
(1,936)	1:40:A:LYS:HD2	1:42:A:ASN:HA	2	0.11	0.01	0.11
(1,936)	1:40:A:LYS:HD3	1:42:A:ASN:HA	2	0.11	0.01	0.11

¹Number of violated models, ²Standard deviation

9.5 All violated distance restraints [i](#)

9.5.1 Histogram : Distribution of distance violations [i](#)

The following histogram shows the distribution of the absolute value of the violation for all violated restraints in the ensemble.



9.5.2 Table : All distance violations [i](#)

The following table lists the absolute value of the violation for each restraint in the ensemble sorted by its value. The Key (restraint list ID, restraint ID) is the unique identifier for a given restraint. Rows with same key represent combinatorial or ambiguous restraints and are counted as a single restraint.

Key	Atom-1	Atom-2	Model ID	Violation (Å)
(1,158)	1:11:A:TYR:H	1:88:A:TYR:HB2	7	0.24
(1,158)	1:11:A:TYR:H	1:88:A:TYR:HB3	7	0.24
(1,964)	1:44:A:TYR:HB2	1:60:A:SER:HB2	20	0.22
(1,964)	1:44:A:TYR:HB3	1:60:A:SER:HB2	20	0.22
(1,1178)	1:53:A:GLY:HA3	1:54:A:THR:HG21	17	0.21
(1,1178)	1:53:A:GLY:HA3	1:54:A:THR:HG22	17	0.21
(1,1178)	1:53:A:GLY:HA3	1:54:A:THR:HG23	17	0.21
(1,1170)	1:52:A:ASN:H	1:53:A:GLY:HA2	2	0.21
(1,1060)	1:48:A:VAL:HG11	1:50:A:LYS:HD2	11	0.2
(1,1060)	1:48:A:VAL:HG11	1:50:A:LYS:HD3	11	0.2

Continued on next page...

Continued from previous page...

Key	Atom-1	Atom-2	Model ID	Violation (Å)
(1,1060)	1:48:A:VAL:HG12	1:50:A:LYS:HD2	11	0.2
(1,1060)	1:48:A:VAL:HG12	1:50:A:LYS:HD3	11	0.2
(1,1060)	1:48:A:VAL:HG13	1:50:A:LYS:HD2	11	0.2
(1,1060)	1:48:A:VAL:HG13	1:50:A:LYS:HD3	11	0.2
(1,1060)	1:48:A:VAL:HG21	1:50:A:LYS:HD2	11	0.2
(1,1060)	1:48:A:VAL:HG21	1:50:A:LYS:HD3	11	0.2
(1,1060)	1:48:A:VAL:HG22	1:50:A:LYS:HD2	11	0.2
(1,1060)	1:48:A:VAL:HG22	1:50:A:LYS:HD3	11	0.2
(1,1060)	1:48:A:VAL:HG23	1:50:A:LYS:HD2	11	0.2
(1,1060)	1:48:A:VAL:HG23	1:50:A:LYS:HD3	11	0.2
(1,2147)	1:110:A:TYR:HA	1:113:A:THR:HG21	10	0.19
(1,2147)	1:110:A:TYR:HA	1:113:A:THR:HG22	10	0.19
(1,2147)	1:110:A:TYR:HA	1:113:A:THR:HG23	10	0.19
(1,1174)	1:52:A:ASN:H	1:55:A:ASP:H	2	0.19
(1,1100)	1:49:A:ASN:H	1:50:A:LYS:HE2	6	0.19
(1,1100)	1:49:A:ASN:H	1:50:A:LYS:HE3	6	0.19
(1,1060)	1:48:A:VAL:HG11	1:50:A:LYS:HD2	17	0.19
(1,1060)	1:48:A:VAL:HG11	1:50:A:LYS:HD3	17	0.19
(1,1060)	1:48:A:VAL:HG12	1:50:A:LYS:HD2	17	0.19
(1,1060)	1:48:A:VAL:HG12	1:50:A:LYS:HD3	17	0.19
(1,1060)	1:48:A:VAL:HG13	1:50:A:LYS:HD2	17	0.19
(1,1060)	1:48:A:VAL:HG13	1:50:A:LYS:HD3	17	0.19
(1,1060)	1:48:A:VAL:HG21	1:50:A:LYS:HD2	17	0.19
(1,1060)	1:48:A:VAL:HG21	1:50:A:LYS:HD3	17	0.19
(1,1060)	1:48:A:VAL:HG22	1:50:A:LYS:HD2	17	0.19
(1,1060)	1:48:A:VAL:HG22	1:50:A:LYS:HD3	17	0.19
(1,1060)	1:48:A:VAL:HG23	1:50:A:LYS:HD2	17	0.19
(1,1060)	1:48:A:VAL:HG23	1:50:A:LYS:HD3	17	0.19
(1,484)	1:21:A:ASN:H	1:22:A:THR:HG21	9	0.19
(1,484)	1:21:A:ASN:H	1:22:A:THR:HG22	9	0.19
(1,484)	1:21:A:ASN:H	1:22:A:THR:HG23	9	0.19
(1,1178)	1:53:A:GLY:HA3	1:54:A:THR:HG21	14	0.18
(1,1178)	1:53:A:GLY:HA3	1:54:A:THR:HG22	14	0.18
(1,1178)	1:53:A:GLY:HA3	1:54:A:THR:HG23	14	0.18
(1,946)	1:40:A:LYS:H	1:40:A:LYS:HG2	15	0.18
(1,946)	1:40:A:LYS:H	1:40:A:LYS:HG3	15	0.18
(1,484)	1:21:A:ASN:H	1:22:A:THR:HG21	16	0.18
(1,484)	1:21:A:ASN:H	1:22:A:THR:HG22	16	0.18
(1,484)	1:21:A:ASN:H	1:22:A:THR:HG23	16	0.18
(1,1616)	1:76:A:LYS:HE2	1:77:A:LEU:H	6	0.17
(1,1616)	1:76:A:LYS:HE3	1:77:A:LEU:H	6	0.17
(1,1129)	1:50:A:LYS:H	1:50:A:LYS:HB2	16	0.17

Continued on next page...

Continued from previous page...

Key	Atom-1	Atom-2	Model ID	Violation (Å)
(1,1100)	1:49:A:ASN:H	1:50:A:LYS:HE2	5	0.17
(1,1100)	1:49:A:ASN:H	1:50:A:LYS:HE3	5	0.17
(1,1060)	1:48:A:VAL:HG11	1:50:A:LYS:HD2	1	0.17
(1,1060)	1:48:A:VAL:HG11	1:50:A:LYS:HD3	1	0.17
(1,1060)	1:48:A:VAL:HG12	1:50:A:LYS:HD2	1	0.17
(1,1060)	1:48:A:VAL:HG12	1:50:A:LYS:HD3	1	0.17
(1,1060)	1:48:A:VAL:HG13	1:50:A:LYS:HD2	1	0.17
(1,1060)	1:48:A:VAL:HG13	1:50:A:LYS:HD3	1	0.17
(1,1060)	1:48:A:VAL:HG21	1:50:A:LYS:HD2	1	0.17
(1,1060)	1:48:A:VAL:HG21	1:50:A:LYS:HD3	1	0.17
(1,1060)	1:48:A:VAL:HG22	1:50:A:LYS:HD2	1	0.17
(1,1060)	1:48:A:VAL:HG22	1:50:A:LYS:HD3	1	0.17
(1,1060)	1:48:A:VAL:HG23	1:50:A:LYS:HD2	1	0.17
(1,1060)	1:48:A:VAL:HG23	1:50:A:LYS:HD3	1	0.17
(1,1060)	1:48:A:VAL:HG11	1:50:A:LYS:HD2	14	0.17
(1,1060)	1:48:A:VAL:HG11	1:50:A:LYS:HD3	14	0.17
(1,1060)	1:48:A:VAL:HG12	1:50:A:LYS:HD2	14	0.17
(1,1060)	1:48:A:VAL:HG12	1:50:A:LYS:HD3	14	0.17
(1,1060)	1:48:A:VAL:HG13	1:50:A:LYS:HD2	14	0.17
(1,1060)	1:48:A:VAL:HG13	1:50:A:LYS:HD3	14	0.17
(1,1060)	1:48:A:VAL:HG21	1:50:A:LYS:HD2	14	0.17
(1,1060)	1:48:A:VAL:HG21	1:50:A:LYS:HD3	14	0.17
(1,1060)	1:48:A:VAL:HG22	1:50:A:LYS:HD2	14	0.17
(1,1060)	1:48:A:VAL:HG22	1:50:A:LYS:HD3	14	0.17
(1,1060)	1:48:A:VAL:HG23	1:50:A:LYS:HD2	14	0.17
(1,1060)	1:48:A:VAL:HG23	1:50:A:LYS:HD3	14	0.17
(1,484)	1:21:A:ASN:H	1:22:A:THR:HG21	17	0.17
(1,484)	1:21:A:ASN:H	1:22:A:THR:HG22	17	0.17
(1,484)	1:21:A:ASN:H	1:22:A:THR:HG23	17	0.17
(1,2171)	1:112:A:ASN:H	1:113:A:THR:HG21	19	0.16
(1,2171)	1:112:A:ASN:H	1:113:A:THR:HG22	19	0.16
(1,2171)	1:112:A:ASN:H	1:113:A:THR:HG23	19	0.16
(1,1500)	1:72:A:VAL:HG11	1:73:A:ALA:H	3	0.16
(1,1500)	1:72:A:VAL:HG12	1:73:A:ALA:H	3	0.16
(1,1500)	1:72:A:VAL:HG13	1:73:A:ALA:H	3	0.16
(1,1129)	1:50:A:LYS:H	1:50:A:LYS:HB2	10	0.16
(1,1129)	1:50:A:LYS:H	1:50:A:LYS:HB2	14	0.16
(1,429)	1:20:A:PHE:HB3	1:21:A:ASN:H	8	0.16
(1,1590)	1:75:A:LYS:H	1:75:A:LYS:HE2	9	0.15
(1,1590)	1:75:A:LYS:H	1:75:A:LYS:HE3	9	0.15
(1,1314)	1:58:A:ILE:H	1:58:A:ILE:HB	7	0.15
(1,1314)	1:58:A:ILE:H	1:58:A:ILE:HB	9	0.15

Continued on next page...

Continued from previous page...

Key	Atom-1	Atom-2	Model ID	Violation (Å)
(1,1314)	1:58:A:ILE:H	1:58:A:ILE:HB	12	0.15
(1,1202)	1:54:A:THR:HB	1:76:A:LYS:HD2	17	0.15
(1,1202)	1:54:A:THR:HB	1:76:A:LYS:HD3	17	0.15
(1,1178)	1:53:A:GLY:HA3	1:54:A:THR:HG21	6	0.15
(1,1178)	1:53:A:GLY:HA3	1:54:A:THR:HG22	6	0.15
(1,1178)	1:53:A:GLY:HA3	1:54:A:THR:HG23	6	0.15
(1,1129)	1:50:A:LYS:H	1:50:A:LYS:HB2	1	0.15
(1,1129)	1:50:A:LYS:H	1:50:A:LYS:HB2	11	0.15
(1,1129)	1:50:A:LYS:H	1:50:A:LYS:HB2	17	0.15
(1,964)	1:44:A:TYR:HB2	1:60:A:SER:HB2	15	0.15
(1,964)	1:44:A:TYR:HB3	1:60:A:SER:HB2	15	0.15
(1,946)	1:40:A:LYS:H	1:40:A:LYS:HG2	9	0.15
(1,946)	1:40:A:LYS:H	1:40:A:LYS:HG3	9	0.15
(1,429)	1:20:A:PHE:HB3	1:21:A:ASN:H	2	0.15
(1,429)	1:20:A:PHE:HB3	1:21:A:ASN:H	20	0.15
(1,1970)	1:102:A:GLY:HA2	1:103:A:ILE:HD11	17	0.14
(1,1970)	1:102:A:GLY:HA2	1:103:A:ILE:HD12	17	0.14
(1,1970)	1:102:A:GLY:HA2	1:103:A:ILE:HD13	17	0.14
(1,1616)	1:76:A:LYS:HE2	1:77:A:LEU:H	15	0.14
(1,1616)	1:76:A:LYS:HE3	1:77:A:LEU:H	15	0.14
(1,1585)	1:75:A:LYS:HG2	1:83:A:ARG:H	14	0.14
(1,1532)	1:74:A:MET:HA	1:75:A:LYS:HB3	1	0.14
(1,1191)	1:54:A:THR:HA	1:75:A:LYS:HA	18	0.14
(1,1120)	1:50:A:LYS:HE2	1:57:A:GLU:HB2	6	0.14
(1,1120)	1:50:A:LYS:HE2	1:57:A:GLU:HB3	6	0.14
(1,1120)	1:50:A:LYS:HE3	1:57:A:GLU:HB2	6	0.14
(1,1120)	1:50:A:LYS:HE3	1:57:A:GLU:HB3	6	0.14
(1,1060)	1:48:A:VAL:HG11	1:50:A:LYS:HD2	16	0.14
(1,1060)	1:48:A:VAL:HG11	1:50:A:LYS:HD3	16	0.14
(1,1060)	1:48:A:VAL:HG12	1:50:A:LYS:HD2	16	0.14
(1,1060)	1:48:A:VAL:HG12	1:50:A:LYS:HD3	16	0.14
(1,1060)	1:48:A:VAL:HG13	1:50:A:LYS:HD2	16	0.14
(1,1060)	1:48:A:VAL:HG13	1:50:A:LYS:HD3	16	0.14
(1,1060)	1:48:A:VAL:HG21	1:50:A:LYS:HD2	16	0.14
(1,1060)	1:48:A:VAL:HG21	1:50:A:LYS:HD3	16	0.14
(1,1060)	1:48:A:VAL:HG22	1:50:A:LYS:HD2	16	0.14
(1,1060)	1:48:A:VAL:HG22	1:50:A:LYS:HD3	16	0.14
(1,1060)	1:48:A:VAL:HG23	1:50:A:LYS:HD2	16	0.14
(1,1060)	1:48:A:VAL:HG23	1:50:A:LYS:HD3	16	0.14
(1,729)	1:29:A:GLN:HB2	1:107:A:ASN:HB2	5	0.14
(1,729)	1:29:A:GLN:HB3	1:107:A:ASN:HB2	5	0.14
(1,297)	1:16:A:LEU:HD11	1:17:A:ASN:HB2	18	0.14

Continued on next page...

Continued from previous page...

Key	Atom-1	Atom-2	Model ID	Violation (Å)
(1,297)	1:16:A:LEU:HD11	1:17:A:ASN:HB3	18	0.14
(1,297)	1:16:A:LEU:HD12	1:17:A:ASN:HB2	18	0.14
(1,297)	1:16:A:LEU:HD12	1:17:A:ASN:HB3	18	0.14
(1,297)	1:16:A:LEU:HD13	1:17:A:ASN:HB2	18	0.14
(1,297)	1:16:A:LEU:HD13	1:17:A:ASN:HB3	18	0.14
(1,297)	1:16:A:LEU:HD21	1:17:A:ASN:HB2	18	0.14
(1,297)	1:16:A:LEU:HD21	1:17:A:ASN:HB3	18	0.14
(1,297)	1:16:A:LEU:HD22	1:17:A:ASN:HB2	18	0.14
(1,297)	1:16:A:LEU:HD22	1:17:A:ASN:HB3	18	0.14
(1,297)	1:16:A:LEU:HD23	1:17:A:ASN:HB2	18	0.14
(1,297)	1:16:A:LEU:HD23	1:17:A:ASN:HB3	18	0.14
(1,1624)	1:76:A:LYS:H	1:76:A:LYS:HE2	8	0.13
(1,1624)	1:76:A:LYS:H	1:76:A:LYS:HE3	8	0.13
(1,1590)	1:75:A:LYS:H	1:75:A:LYS:HE2	11	0.13
(1,1590)	1:75:A:LYS:H	1:75:A:LYS:HE3	11	0.13
(1,1419)	1:67:A:THR:HG21	1:68:A:ASP:H	3	0.13
(1,1419)	1:67:A:THR:HG22	1:68:A:ASP:H	3	0.13
(1,1419)	1:67:A:THR:HG23	1:68:A:ASP:H	3	0.13
(1,1405)	1:65:A:ASP:H	1:66:A:SER:HB2	18	0.13
(1,1314)	1:58:A:ILE:H	1:58:A:ILE:HB	4	0.13
(1,1314)	1:58:A:ILE:H	1:58:A:ILE:HB	6	0.13
(1,1314)	1:58:A:ILE:H	1:58:A:ILE:HB	15	0.13
(1,1142)	1:51:A:ASN:HB2	1:52:A:ASN:H	9	0.13
(1,1142)	1:51:A:ASN:HB3	1:52:A:ASN:H	9	0.13
(1,1100)	1:49:A:ASN:H	1:50:A:LYS:HE2	14	0.13
(1,1100)	1:49:A:ASN:H	1:50:A:LYS:HE3	14	0.13
(1,907)	1:37:A:PHE:HB2	1:41:A:SER:HB3	13	0.13
(1,907)	1:37:A:PHE:HB3	1:41:A:SER:HB3	13	0.13
(1,743)	1:29:A:GLN:H	1:46:A:ILE:HD11	14	0.13
(1,743)	1:29:A:GLN:H	1:46:A:ILE:HD12	14	0.13
(1,743)	1:29:A:GLN:H	1:46:A:ILE:HD13	14	0.13
(1,463)	1:20:A:PHE:H	1:76:A:LYS:HE2	2	0.13
(1,463)	1:20:A:PHE:H	1:76:A:LYS:HE3	2	0.13
(1,56)	1:6:A:GLN:HB3	1:7:A:TYR:H	15	0.13
(1,43)	1:5:A:THR:HG21	1:14:A:THR:HB	9	0.13
(1,43)	1:5:A:THR:HG22	1:14:A:THR:HB	9	0.13
(1,43)	1:5:A:THR:HG23	1:14:A:THR:HB	9	0.13
(1,2146)	1:110:A:TYR:HA	1:112:A:ASN:HB2	14	0.12
(1,2146)	1:110:A:TYR:HA	1:112:A:ASN:HB3	14	0.12
(1,2074)	1:106:A:GLY:HA3	1:109:A:ARG:HG2	17	0.12
(1,2074)	1:106:A:GLY:HA3	1:109:A:ARG:HG2	19	0.12
(1,1970)	1:102:A:GLY:HA2	1:103:A:ILE:HD11	7	0.12

Continued on next page...

Continued from previous page...

Key	Atom-1	Atom-2	Model ID	Violation (Å)
(1,1970)	1:102:A:GLY:HA2	1:103:A:ILE:HD12	7	0.12
(1,1970)	1:102:A:GLY:HA2	1:103:A:ILE:HD13	7	0.12
(1,1970)	1:102:A:GLY:HA2	1:103:A:ILE:HD11	12	0.12
(1,1970)	1:102:A:GLY:HA2	1:103:A:ILE:HD12	12	0.12
(1,1970)	1:102:A:GLY:HA2	1:103:A:ILE:HD13	12	0.12
(1,1970)	1:102:A:GLY:HA2	1:103:A:ILE:HD11	13	0.12
(1,1970)	1:102:A:GLY:HA2	1:103:A:ILE:HD12	13	0.12
(1,1970)	1:102:A:GLY:HA2	1:103:A:ILE:HD13	13	0.12
(1,1970)	1:102:A:GLY:HA2	1:103:A:ILE:HD11	16	0.12
(1,1970)	1:102:A:GLY:HA2	1:103:A:ILE:HD12	16	0.12
(1,1970)	1:102:A:GLY:HA2	1:103:A:ILE:HD13	16	0.12
(1,1838)	1:95:A:ILE:HA	1:95:A:ILE:HG13	8	0.12
(1,1624)	1:76:A:LYS:H	1:76:A:LYS:HE2	4	0.12
(1,1624)	1:76:A:LYS:H	1:76:A:LYS:HE3	4	0.12
(1,1624)	1:76:A:LYS:H	1:76:A:LYS:HE2	16	0.12
(1,1624)	1:76:A:LYS:H	1:76:A:LYS:HE3	16	0.12
(1,1314)	1:58:A:ILE:H	1:58:A:ILE:HB	11	0.12
(1,1314)	1:58:A:ILE:H	1:58:A:ILE:HB	13	0.12
(1,1314)	1:58:A:ILE:H	1:58:A:ILE:HB	17	0.12
(1,1060)	1:48:A:VAL:HG11	1:50:A:LYS:HD2	10	0.12
(1,1060)	1:48:A:VAL:HG11	1:50:A:LYS:HD3	10	0.12
(1,1060)	1:48:A:VAL:HG12	1:50:A:LYS:HD2	10	0.12
(1,1060)	1:48:A:VAL:HG12	1:50:A:LYS:HD3	10	0.12
(1,1060)	1:48:A:VAL:HG13	1:50:A:LYS:HD2	10	0.12
(1,1060)	1:48:A:VAL:HG13	1:50:A:LYS:HD3	10	0.12
(1,1060)	1:48:A:VAL:HG21	1:50:A:LYS:HD2	10	0.12
(1,1060)	1:48:A:VAL:HG21	1:50:A:LYS:HD3	10	0.12
(1,1060)	1:48:A:VAL:HG22	1:50:A:LYS:HD2	10	0.12
(1,1060)	1:48:A:VAL:HG22	1:50:A:LYS:HD3	10	0.12
(1,1060)	1:48:A:VAL:HG23	1:50:A:LYS:HD2	10	0.12
(1,1060)	1:48:A:VAL:HG23	1:50:A:LYS:HD3	10	0.12
(1,964)	1:44:A:TYR:HB2	1:60:A:SER:HB2	14	0.12
(1,964)	1:44:A:TYR:HB3	1:60:A:SER:HB2	14	0.12
(1,936)	1:40:A:LYS:HD2	1:42:A:ASN:HA	11	0.12
(1,936)	1:40:A:LYS:HD3	1:42:A:ASN:HA	11	0.12
(1,921)	1:39:A:TYR:HA	1:41:A:SER:HB2	5	0.12
(1,799)	1:31:A:ILE:HD11	1:61:A:ALA:H	11	0.12
(1,799)	1:31:A:ILE:HD12	1:61:A:ALA:H	11	0.12
(1,799)	1:31:A:ILE:HD13	1:61:A:ALA:H	11	0.12
(1,463)	1:20:A:PHE:H	1:76:A:LYS:HE2	11	0.12
(1,463)	1:20:A:PHE:H	1:76:A:LYS:HE3	11	0.12
(1,359)	1:18:A:TYR:HB2	1:23:A:VAL:HG11	10	0.12

Continued on next page...

Continued from previous page...

Key	Atom-1	Atom-2	Model ID	Violation (Å)
(1,359)	1:18:A:TYR:HB2	1:23:A:VAL:HG12	10	0.12
(1,359)	1:18:A:TYR:HB2	1:23:A:VAL:HG13	10	0.12
(1,359)	1:18:A:TYR:HB2	1:23:A:VAL:HG21	10	0.12
(1,359)	1:18:A:TYR:HB2	1:23:A:VAL:HG22	10	0.12
(1,359)	1:18:A:TYR:HB2	1:23:A:VAL:HG23	10	0.12
(1,359)	1:18:A:TYR:HB3	1:23:A:VAL:HG11	10	0.12
(1,359)	1:18:A:TYR:HB3	1:23:A:VAL:HG12	10	0.12
(1,359)	1:18:A:TYR:HB3	1:23:A:VAL:HG13	10	0.12
(1,359)	1:18:A:TYR:HB3	1:23:A:VAL:HG21	10	0.12
(1,359)	1:18:A:TYR:HB3	1:23:A:VAL:HG22	10	0.12
(1,359)	1:18:A:TYR:HB3	1:23:A:VAL:HG23	10	0.12
(1,272)	1:15:A:THR:H	1:101:A:ILE:HD11	5	0.12
(1,272)	1:15:A:THR:H	1:101:A:ILE:HD12	5	0.12
(1,272)	1:15:A:THR:H	1:101:A:ILE:HD13	5	0.12
(1,187)	1:13:A:ILE:HA	1:14:A:THR:HG21	9	0.12
(1,187)	1:13:A:ILE:HA	1:14:A:THR:HG22	9	0.12
(1,187)	1:13:A:ILE:HA	1:14:A:THR:HG23	9	0.12
(1,106)	1:8:A:LYS:HB3	1:11:A:TYR:HB2	11	0.12
(1,106)	1:8:A:LYS:HB3	1:11:A:TYR:HB3	11	0.12
(1,7)	1:3:A:LYS:HD2	1:5:A:THR:H	10	0.12
(1,7)	1:3:A:LYS:HD3	1:5:A:THR:H	10	0.12
(1,2074)	1:106:A:GLY:HA3	1:109:A:ARG:HG2	3	0.11
(1,1970)	1:102:A:GLY:HA2	1:103:A:ILE:HD11	1	0.11
(1,1970)	1:102:A:GLY:HA2	1:103:A:ILE:HD12	1	0.11
(1,1970)	1:102:A:GLY:HA2	1:103:A:ILE:HD13	1	0.11
(1,1970)	1:102:A:GLY:HA2	1:103:A:ILE:HD11	4	0.11
(1,1970)	1:102:A:GLY:HA2	1:103:A:ILE:HD12	4	0.11
(1,1970)	1:102:A:GLY:HA2	1:103:A:ILE:HD13	4	0.11
(1,1970)	1:102:A:GLY:HA2	1:103:A:ILE:HD11	9	0.11
(1,1970)	1:102:A:GLY:HA2	1:103:A:ILE:HD12	9	0.11
(1,1970)	1:102:A:GLY:HA2	1:103:A:ILE:HD13	9	0.11
(1,1970)	1:102:A:GLY:HA2	1:103:A:ILE:HD11	10	0.11
(1,1970)	1:102:A:GLY:HA2	1:103:A:ILE:HD12	10	0.11
(1,1970)	1:102:A:GLY:HA2	1:103:A:ILE:HD13	10	0.11
(1,1970)	1:102:A:GLY:HA2	1:103:A:ILE:HD11	11	0.11
(1,1970)	1:102:A:GLY:HA2	1:103:A:ILE:HD12	11	0.11
(1,1970)	1:102:A:GLY:HA2	1:103:A:ILE:HD13	11	0.11
(1,1970)	1:102:A:GLY:HA2	1:103:A:ILE:HD11	15	0.11
(1,1970)	1:102:A:GLY:HA2	1:103:A:ILE:HD12	15	0.11
(1,1970)	1:102:A:GLY:HA2	1:103:A:ILE:HD13	15	0.11
(1,1970)	1:102:A:GLY:HA2	1:103:A:ILE:HD11	18	0.11
(1,1970)	1:102:A:GLY:HA2	1:103:A:ILE:HD12	18	0.11

Continued on next page...

Continued from previous page...

Key	Atom-1	Atom-2	Model ID	Violation (Å)
(1,1970)	1:102:A:GLY:HA2	1:103:A:ILE:HD13	18	0.11
(1,1970)	1:102:A:GLY:HA2	1:103:A:ILE:HD11	19	0.11
(1,1970)	1:102:A:GLY:HA2	1:103:A:ILE:HD12	19	0.11
(1,1970)	1:102:A:GLY:HA2	1:103:A:ILE:HD13	19	0.11
(1,1824)	1:90:A:SER:HA	1:91:A:GLN:HG2	11	0.11
(1,1824)	1:90:A:SER:HA	1:91:A:GLN:HG3	11	0.11
(1,1806)	1:88:A:TYR:HA	1:93:A:ASN:H	13	0.11
(1,1792)	1:87:A:LYS:HD2	1:88:A:TYR:HB2	4	0.11
(1,1792)	1:87:A:LYS:HD2	1:88:A:TYR:HB3	4	0.11
(1,1792)	1:87:A:LYS:HD3	1:88:A:TYR:HB2	4	0.11
(1,1792)	1:87:A:LYS:HD3	1:88:A:TYR:HB3	4	0.11
(1,1616)	1:76:A:LYS:HE2	1:77:A:LEU:H	14	0.11
(1,1616)	1:76:A:LYS:HE3	1:77:A:LEU:H	14	0.11
(1,1375)	1:62:A:SER:HB3	1:68:A:ASP:HB3	8	0.11
(1,1314)	1:58:A:ILE:H	1:58:A:ILE:HB	8	0.11
(1,1314)	1:58:A:ILE:H	1:58:A:ILE:HB	19	0.11
(1,1227)	1:55:A:ASP:HB3	1:75:A:LYS:HG3	13	0.11
(1,1208)	1:54:A:THR:H	1:54:A:THR:HB	2	0.11
(1,1191)	1:54:A:THR:HA	1:75:A:LYS:HA	3	0.11
(1,1142)	1:51:A:ASN:HB2	1:52:A:ASN:H	14	0.11
(1,1142)	1:51:A:ASN:HB3	1:52:A:ASN:H	14	0.11
(1,1132)	1:50:A:LYS:H	1:50:A:LYS:HG3	8	0.11
(1,1132)	1:50:A:LYS:H	1:50:A:LYS:HG3	13	0.11
(1,1132)	1:50:A:LYS:H	1:50:A:LYS:HG3	15	0.11
(1,1090)	1:49:A:ASN:HB3	1:58:A:ILE:HD11	11	0.11
(1,1090)	1:49:A:ASN:HB3	1:58:A:ILE:HD12	11	0.11
(1,1090)	1:49:A:ASN:HB3	1:58:A:ILE:HD13	11	0.11
(1,1080)	1:49:A:ASN:HA	1:50:A:LYS:HD2	20	0.11
(1,1080)	1:49:A:ASN:HA	1:50:A:LYS:HD3	20	0.11
(1,962)	1:44:A:TYR:HA	1:70:A:LEU:H	20	0.11
(1,921)	1:39:A:TYR:HA	1:41:A:SER:HB2	11	0.11
(1,743)	1:29:A:GLN:H	1:46:A:ILE:HD11	20	0.11
(1,743)	1:29:A:GLN:H	1:46:A:ILE:HD12	20	0.11
(1,743)	1:29:A:GLN:H	1:46:A:ILE:HD13	20	0.11
(1,741)	1:29:A:GLN:H	1:32:A:GLN:HG2	13	0.11
(1,741)	1:29:A:GLN:H	1:32:A:GLN:HG3	13	0.11
(1,741)	1:29:A:GLN:H	1:32:A:GLN:HG2	14	0.11
(1,741)	1:29:A:GLN:H	1:32:A:GLN:HG3	14	0.11
(1,689)	1:28:A:LEU:HG	1:29:A:GLN:HG2	5	0.11
(1,689)	1:28:A:LEU:HG	1:29:A:GLN:HG3	5	0.11
(1,671)	1:28:A:LEU:HB3	1:58:A:ILE:HD11	12	0.11
(1,671)	1:28:A:LEU:HB3	1:58:A:ILE:HD12	12	0.11

Continued on next page...

Continued from previous page...

Key	Atom-1	Atom-2	Model ID	Violation (Å)
(1,671)	1:28:A:LEU:HB3	1:58:A:ILE:HD13	12	0.11
(1,587)	1:25:A:ASN:HB2	1:26:A:ALA:H	19	0.11
(1,463)	1:20:A:PHE:H	1:76:A:LYS:HE2	3	0.11
(1,463)	1:20:A:PHE:H	1:76:A:LYS:HE3	3	0.11
(1,312)	1:16:A:LEU:HD11	1:106:A:GLY:H	10	0.11
(1,312)	1:16:A:LEU:HD12	1:106:A:GLY:H	10	0.11
(1,312)	1:16:A:LEU:HD13	1:106:A:GLY:H	10	0.11
(1,312)	1:16:A:LEU:HD21	1:106:A:GLY:H	10	0.11
(1,312)	1:16:A:LEU:HD22	1:106:A:GLY:H	10	0.11
(1,312)	1:16:A:LEU:HD23	1:106:A:GLY:H	10	0.11
(1,270)	1:15:A:THR:H	1:83:A:ARG:HD2	3	0.11
(1,270)	1:15:A:THR:H	1:83:A:ARG:HD3	3	0.11
(1,158)	1:11:A:TYR:H	1:88:A:TYR:HB2	3	0.11
(1,158)	1:11:A:TYR:H	1:88:A:TYR:HB3	3	0.11
(1,13)	1:3:A:LYS:HG3	1:4:A:GLY:HA2	9	0.11
(1,13)	1:3:A:LYS:HG3	1:4:A:GLY:HA3	9	0.11
(1,2163)	1:111:A:ALA:H	1:113:A:THR:HG21	10	0.1
(1,2163)	1:111:A:ALA:H	1:113:A:THR:HG22	10	0.1
(1,2163)	1:111:A:ALA:H	1:113:A:THR:HG23	10	0.1
(1,1970)	1:102:A:GLY:HA2	1:103:A:ILE:HD11	2	0.1
(1,1970)	1:102:A:GLY:HA2	1:103:A:ILE:HD12	2	0.1
(1,1970)	1:102:A:GLY:HA2	1:103:A:ILE:HD13	2	0.1
(1,1970)	1:102:A:GLY:HA2	1:103:A:ILE:HD11	3	0.1
(1,1970)	1:102:A:GLY:HA2	1:103:A:ILE:HD12	3	0.1
(1,1970)	1:102:A:GLY:HA2	1:103:A:ILE:HD13	3	0.1
(1,1970)	1:102:A:GLY:HA2	1:103:A:ILE:HD11	5	0.1
(1,1970)	1:102:A:GLY:HA2	1:103:A:ILE:HD12	5	0.1
(1,1970)	1:102:A:GLY:HA2	1:103:A:ILE:HD13	5	0.1
(1,1970)	1:102:A:GLY:HA2	1:103:A:ILE:HD11	6	0.1
(1,1970)	1:102:A:GLY:HA2	1:103:A:ILE:HD12	6	0.1
(1,1970)	1:102:A:GLY:HA2	1:103:A:ILE:HD13	6	0.1
(1,1659)	1:78:A:PRO:HD2	1:81:A:ALA:HB1	17	0.1
(1,1659)	1:78:A:PRO:HD2	1:81:A:ALA:HB2	17	0.1
(1,1659)	1:78:A:PRO:HD2	1:81:A:ALA:HB3	17	0.1
(1,1448)	1:70:A:LEU:HD11	1:72:A:VAL:HB	9	0.1
(1,1448)	1:70:A:LEU:HD12	1:72:A:VAL:HB	9	0.1
(1,1448)	1:70:A:LEU:HD13	1:72:A:VAL:HB	9	0.1
(1,1314)	1:58:A:ILE:H	1:58:A:ILE:HB	16	0.1
(1,1303)	1:58:A:ILE:HD11	1:74:A:MET:HE1	17	0.1
(1,1303)	1:58:A:ILE:HD11	1:74:A:MET:HE2	17	0.1
(1,1303)	1:58:A:ILE:HD11	1:74:A:MET:HE3	17	0.1
(1,1303)	1:58:A:ILE:HD12	1:74:A:MET:HE1	17	0.1

Continued on next page...

Continued from previous page...

Key	Atom-1	Atom-2	Model ID	Violation (Å)
(1,1303)	1:58:A:ILE:HD12	1:74:A:MET:HE2	17	0.1
(1,1303)	1:58:A:ILE:HD12	1:74:A:MET:HE3	17	0.1
(1,1303)	1:58:A:ILE:HD13	1:74:A:MET:HE1	17	0.1
(1,1303)	1:58:A:ILE:HD13	1:74:A:MET:HE2	17	0.1
(1,1303)	1:58:A:ILE:HD13	1:74:A:MET:HE3	17	0.1
(1,1100)	1:49:A:ASN:H	1:50:A:LYS:HE2	11	0.1
(1,1100)	1:49:A:ASN:H	1:50:A:LYS:HE3	11	0.1
(1,1100)	1:49:A:ASN:H	1:50:A:LYS:HE2	17	0.1
(1,1100)	1:49:A:ASN:H	1:50:A:LYS:HE3	17	0.1
(1,963)	1:44:A:TYR:HB2	1:60:A:SER:HB3	15	0.1
(1,963)	1:44:A:TYR:HB3	1:60:A:SER:HB3	15	0.1
(1,943)	1:40:A:LYS:H	1:40:A:LYS:HB3	18	0.1
(1,936)	1:40:A:LYS:HD2	1:42:A:ASN:HA	15	0.1
(1,936)	1:40:A:LYS:HD3	1:42:A:ASN:HA	15	0.1
(1,692)	1:28:A:LEU:HG	1:32:A:GLN:HG3	17	0.1
(1,596)	1:26:A:ALA:HA	1:29:A:GLN:HB2	15	0.1
(1,596)	1:26:A:ALA:HA	1:29:A:GLN:HB3	15	0.1
(1,587)	1:25:A:ASN:HB2	1:26:A:ALA:H	5	0.1
(1,587)	1:25:A:ASN:HB2	1:26:A:ALA:H	13	0.1
(1,545)	1:23:A:VAL:H	1:23:A:VAL:HB	15	0.1
(1,386)	1:19:A:ASN:HA	1:22:A:THR:HG21	17	0.1
(1,386)	1:19:A:ASN:HA	1:22:A:THR:HG22	17	0.1
(1,386)	1:19:A:ASN:HA	1:22:A:THR:HG23	17	0.1
(1,282)	1:16:A:LEU:HB3	1:18:A:TYR:H	5	0.1
(1,158)	1:11:A:TYR:H	1:88:A:TYR:HB2	2	0.1
(1,158)	1:11:A:TYR:H	1:88:A:TYR:HB3	2	0.1

10 Dihedral-angle violation analysis [i](#)

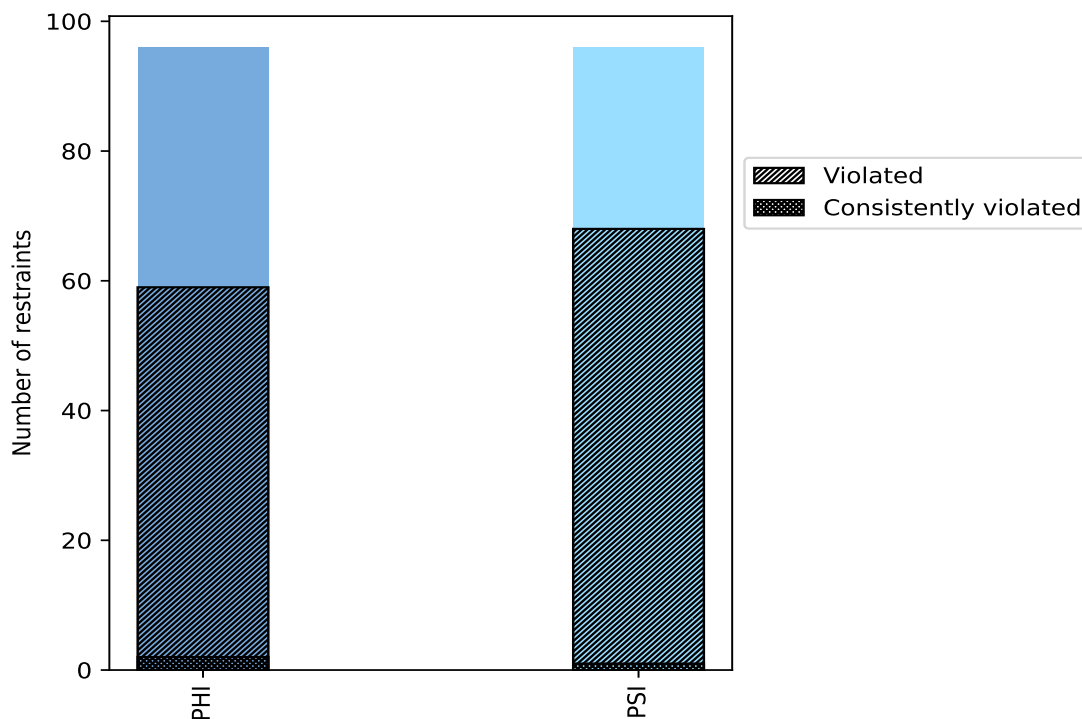
10.1 Summary of dihedral-angle violations [i](#)

The following table provides the summary of dihedral-angle violations in different dihedral-angle types. Violations less than 1° are not included in the calculation.

Angle type	Count	% ¹	Violated ³			Consistently Violated ⁴		
			Count	% ²	% ¹	Count	% ²	% ¹
PHI	96	50.0	59	61.5	30.7	2	2.1	1.0
PSI	96	50.0	68	70.8	35.4	1	1.0	0.5
Total	192	100.0	127	66.1	66.1	3	1.6	1.6

¹ percentage calculated with respect to total number of dihedral-angle restraints, ² percentage calculated with respect to number of restraints in a particular dihedral-angle type, ³ violated in at least one model, ⁴ violated in all the models

10.1.1 Bar chart : Distribution of dihedral-angles and violations [i](#)



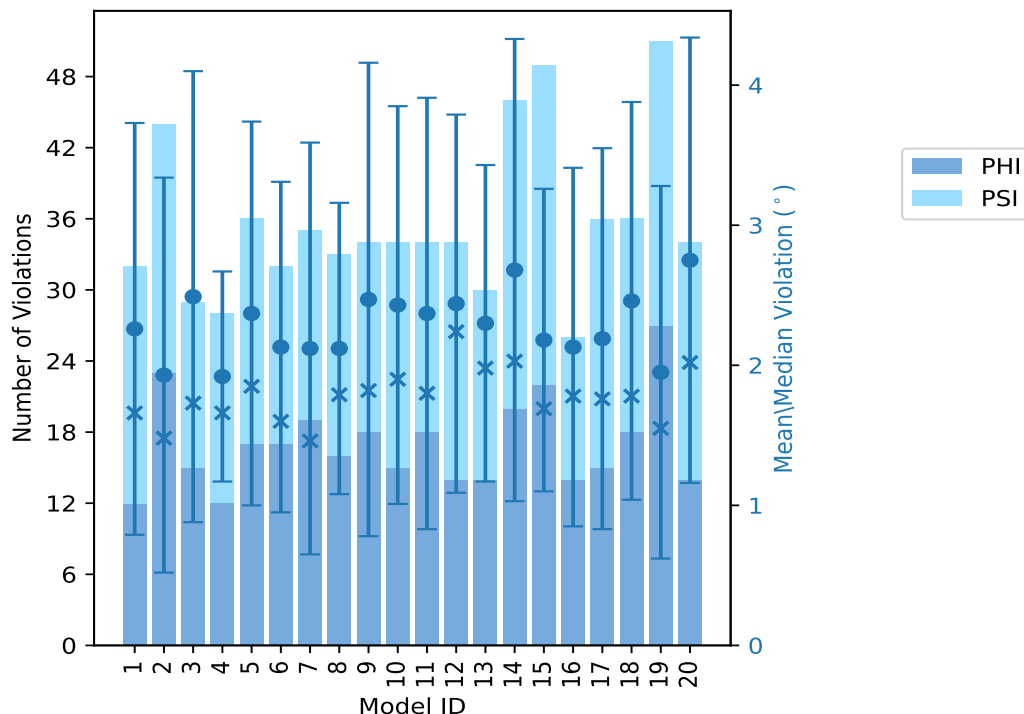
Violated and consistently violated restraints are shown using different hatch patterns in their respective categories

10.2 Dihedral-angle violation statistics for each model [i](#)

The following table provides the dihedral-angle violation statistics for each model in the ensemble. Violations less than 1° are not included in the statistics.

Model ID	Number of violations			Mean (°)	Max (°)	SD (°)	Median (°)
	PHI	PSI	Total				
1	12	20	32	2.26	6.59	1.47	1.66
2	23	21	44	1.93	7.24	1.41	1.48
3	15	14	29	2.49	7.31	1.61	1.73
4	12	16	28	1.92	3.62	0.75	1.66
5	17	19	36	2.37	6.04	1.37	1.85
6	17	15	32	2.13	5.01	1.18	1.6
7	19	16	35	2.12	6.07	1.47	1.46
8	16	17	33	2.12	4.62	1.04	1.79
9	18	16	34	2.47	7.93	1.69	1.82
10	15	19	34	2.43	6.82	1.42	1.9
11	18	16	34	2.37	6.66	1.54	1.8
12	14	20	34	2.44	6.79	1.35	2.24
13	14	16	30	2.3	6.15	1.13	1.98
14	20	26	46	2.68	7.69	1.65	2.03
15	22	27	49	2.18	5.78	1.08	1.69
16	14	12	26	2.13	6.0	1.28	1.78
17	15	21	36	2.19	6.51	1.36	1.76
18	18	18	36	2.46	5.62	1.42	1.78
19	27	24	51	1.95	7.23	1.33	1.55
20	14	20	34	2.75	6.88	1.59	2.02

10.2.1 Bar graph : Dihedral violation statistics for each model [i](#)



The mean(dot),median(x) and the standard deviation are shown in blue with respect to the y axis on the right

10.3 Dihedral-angle violation statistics for the ensemble [i](#)

Violation analysis may find that some restraints are violated in very few models and some are violated in most of models. The following table provides this information as number of violated restraints for a given fraction of ensemble.

Number of violated restraints			Fraction of the ensemble	
PHI	PSI	Total	Count ¹	%
15	17	32	1	5.0
3	8	11	2	10.0
6	8	14	3	15.0
4	8	12	4	20.0
9	2	11	5	25.0
5	2	7	6	30.0
2	7	9	7	35.0
4	3	7	8	40.0
1	0	1	9	45.0
1	3	4	10	50.0
1	2	3	11	55.0

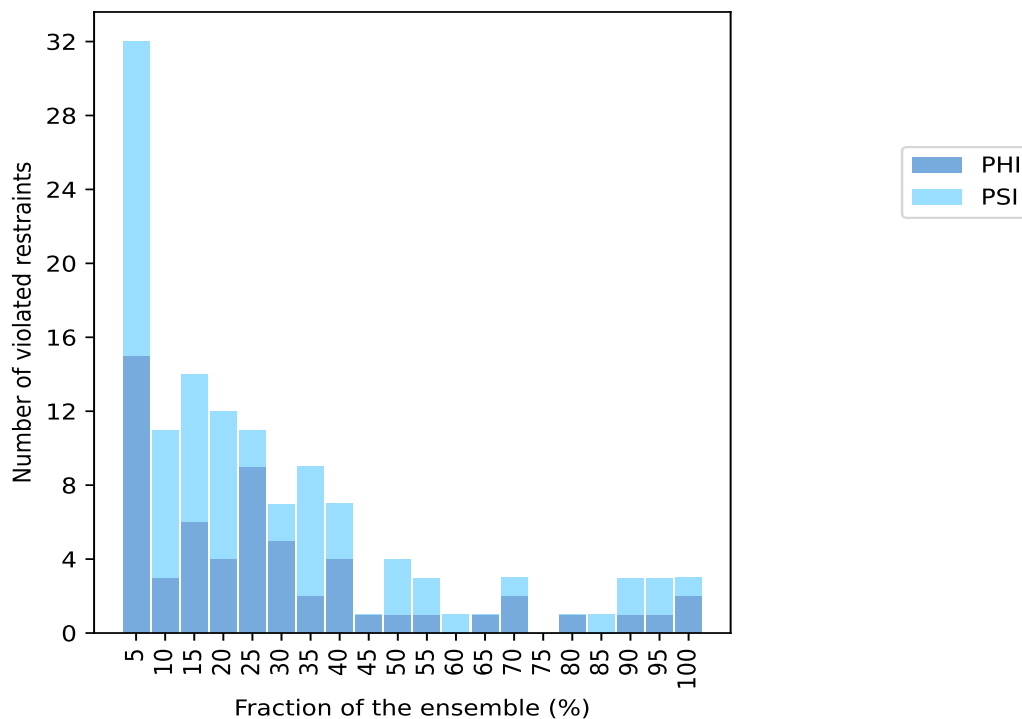
Continued on next page...

Continued from previous page...

Number of violated restraints			Fraction of the ensemble	
PHI	PSI	Total	Count ¹	%
0	1	1	12	60.0
1	0	1	13	65.0
2	1	3	14	70.0
0	0	0	15	75.0
1	0	1	16	80.0
0	1	1	17	85.0
1	2	3	18	90.0
1	2	3	19	95.0
2	1	3	20	100.0

¹ Number of models with violations

10.3.1 Bar graph : Dihedral-angle Violation statistics for the ensemble [i](#)

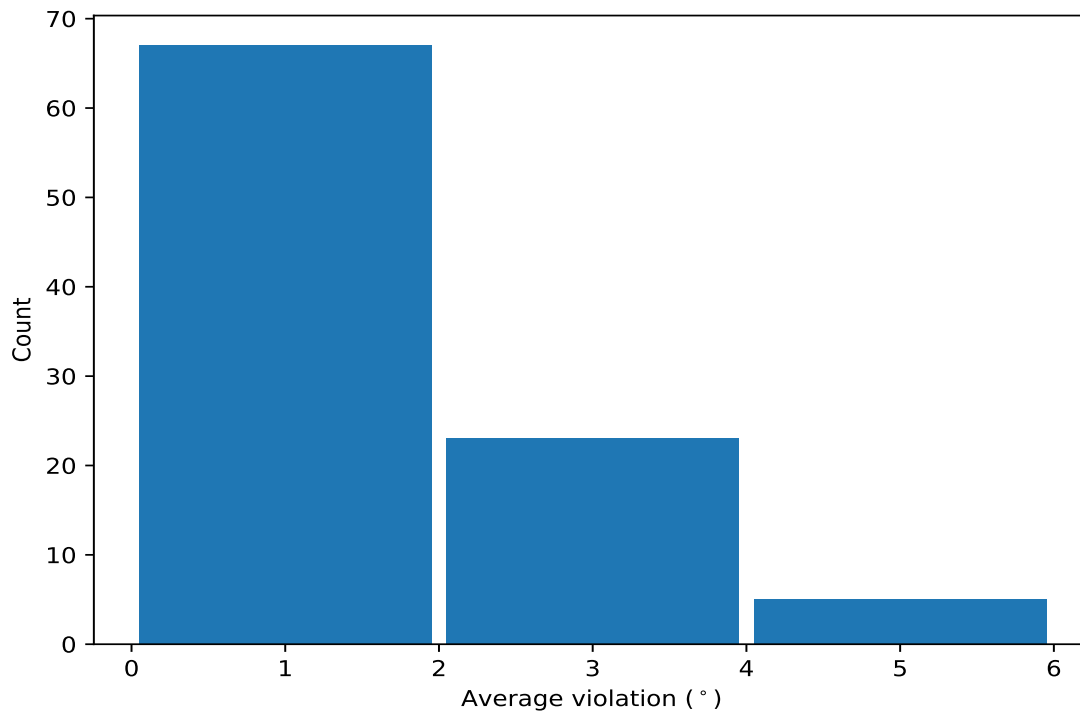


10.4 Most violated dihedral-angle restraints in the ensemble [i](#)

10.4.1 Histogram : Distribution of mean dihedral-angle violations [i](#)

The following histogram shows the distribution of the average value of the violation. The average is calculated for each restraint that is violated in more than one model over all the violated models

in the ensemble



10.4.2 Table: Most violated dihedral-angle restraints [i](#)

The following table provides the mean and the standard deviation of the violation for each restraint sorted by number of violated models and the mean value. The Key (restraint list ID, restraint ID) is the unique identifier for a given restraint.

Key	Atom-1	Atom-2	Atom-3	Atom-4	Models ¹	Mean	SD ²	Median
(1,81)	1:48:A:VAL:C	1:49:A:ASN:N	1:49:A:ASN:CA	1:49:A:ASN:C	20	5.12	1.27	4.88
(1,80)	1:48:A:VAL:N	1:48:A:VAL:CA	1:48:A:VAL:C	1:49:A:ASN:N	20	4.66	1.14	4.3
(1,73)	1:44:A:TYR:C	1:45:A:ASP:N	1:45:A:ASP:CA	1:45:A:ASP:C	20	4.31	1.39	4.39
(1,85)	1:50:A:LYS:C	1:51:A:ASN:N	1:51:A:ASN:CA	1:51:A:ASN:C	19	4.6	1.84	4.5
(1,72)	1:44:A:TYR:N	1:44:A:TYR:CA	1:44:A:TYR:C	1:45:A:ASP:N	19	3.75	1.2	3.55
(1,176)	1:104:A:ILE:N	1:104:A:ILE:CA	1:104:A:ILE:C	1:105:A:GLU:N	19	2.28	0.59	2.11
(1,84)	1:50:A:LYS:N	1:50:A:LYS:CA	1:50:A:LYS:C	1:51:A:ASN:N	18	4.36	1.7	3.88
(1,78)	1:47:A:SER:N	1:47:A:SER:CA	1:47:A:SER:C	1:48:A:VAL:N	18	2.02	0.69	1.87
(1,5)	1:6:A:GLN:C	1:7:A:TYR:N	1:7:A:TYR:CA	1:7:A:TYR:C	18	1.91	0.68	1.76
(1,10)	1:9:A:ASP:N	1:9:A:ASP:CA	1:9:A:ASP:C	1:10:A:GLY:N	17	1.9	0.5	1.91
(1,139)	1:83:A:ARG:C	1:84:A:ILE:N	1:84:A:ILE:CA	1:84:A:ILE:C	16	2.47	0.73	2.65
(1,145)	1:86:A:ILE:C	1:87:A:LYS:N	1:87:A:LYS:CA	1:87:A:LYS:C	14	3.48	1.29	3.56
(1,177)	1:104:A:ILE:C	1:105:A:GLU:N	1:105:A:GLU:CA	1:105:A:GLU:C	14	1.83	0.61	1.88
(1,104)	1:63:A:ASP:N	1:63:A:ASP:CA	1:63:A:ASP:C	1:64:A:SER:N	14	1.71	0.47	1.71
(1,141)	1:84:A:ILE:C	1:85:A:SER:N	1:85:A:SER:CA	1:85:A:SER:C	13	1.77	0.62	1.66
(1,120)	1:72:A:VAL:N	1:72:A:VAL:CA	1:72:A:VAL:C	1:73:A:ALA:N	12	1.56	0.17	1.56
(1,138)	1:83:A:ARG:N	1:83:A:ARG:CA	1:83:A:ARG:C	1:84:A:ILE:N	11	2.11	0.72	1.92
(1,147)	1:87:A:LYS:C	1:88:A:TYR:N	1:88:A:TYR:CA	1:88:A:TYR:C	11	2.03	0.91	1.74
(1,4)	1:6:A:GLN:N	1:6:A:GLN:CA	1:6:A:GLN:C	1:7:A:TYR:N	11	1.62	0.55	1.5
(1,70)	1:42:A:ASN:N	1:42:A:ASN:CA	1:42:A:ASN:C	1:43:A:PRO:N	10	2.65	2.17	1.72

Continued on next page...

Continued from previous page...

Key	Atom-1	Atom-2	Atom-3	Atom-4	Models ¹	Mean	SD ²	Median
(1,146)	1:87:A:LYS:N	1:87:A:LYS:CA	1:87:A:LYS:C	1:88:A:TYR:N	10	2.41	1.33	1.7
(1,66)	1:40:A:LYS:N	1:40:A:LYS:CA	1:40:A:LYS:C	1:41:A:SER:N	10	2.1	1.09	1.37
(1,169)	1:100:A:LEU:C	1:101:A:ILE:N	1:101:A:ILE:CA	1:101:A:ILE:C	10	1.39	0.24	1.37
(1,127)	1:75:A:LYS:C	1:76:A:LYS:N	1:76:A:LYS:CA	1:76:A:LYS:C	9	1.39	0.3	1.39
(1,108)	1:65:A:ASP:N	1:65:A:ASP:CA	1:65:A:ASP:C	1:66:A:SER:N	8	2.18	1.15	1.72
(1,191)	1:111:A:ALA:C	1:112:A:ASN:N	1:112:A:ASN:CA	1:112:A:ASN:C	8	2.04	1.14	1.36
(1,155)	1:93:A:ASN:C	1:94:A:SER:N	1:94:A:SER:CA	1:94:A:SER:C	8	1.66	0.49	1.5
(1,50)	1:31:A:ILE:N	1:31:A:ILE:CA	1:31:A:ILE:C	1:32:A:GLN:N	8	1.55	0.42	1.52
(1,32)	1:22:A:THR:N	1:22:A:THR:CA	1:22:A:THR:C	1:23:A:VAL:N	8	1.47	0.32	1.5
(1,125)	1:74:A:MET:C	1:75:A:LYS:N	1:75:A:LYS:CA	1:75:A:LYS:C	8	1.46	0.49	1.21
(1,137)	1:82:A:THR:C	1:83:A:ARG:N	1:83:A:ARG:CA	1:83:A:ARG:C	8	1.39	0.32	1.38
(1,8)	1:8:A:LYS:N	1:8:A:LYS:CA	1:8:A:LYS:C	1:9:A:ASP:N	7	2.5	1.27	1.94
(1,150)	1:90:A:SER:N	1:90:A:SER:CA	1:90:A:SER:C	1:91:A:GLN:N	7	2.4	0.72	2.53
(1,188)	1:110:A:TYR:N	1:110:A:TYR:CA	1:110:A:TYR:C	1:111:A:ALA:N	7	2.19	0.78	2.17
(1,154)	1:93:A:ASN:N	1:93:A:ASN:CA	1:93:A:ASN:C	1:94:A:SER:N	7	2.13	1.09	1.67
(1,151)	1:90:A:SER:C	1:91:A:GLN:N	1:91:A:GLN:CA	1:91:A:GLN:C	7	2.13	1.14	1.74
(1,116)	1:70:A:LEU:N	1:70:A:LEU:CA	1:70:A:LEU:C	1:71:A:GLN:N	7	1.82	0.48	1.87
(1,148)	1:88:A:TYR:N	1:88:A:TYR:CA	1:88:A:TYR:C	1:89:A:GLY:N	7	1.74	0.47	1.89
(1,128)	1:76:A:LYS:N	1:76:A:LYS:CA	1:76:A:LYS:C	1:77:A:LEU:N	7	1.51	0.26	1.58
(1,89)	1:55:A:ASP:C	1:56:A:ALA:N	1:56:A:ALA:CA	1:56:A:ALA:C	7	1.5	0.38	1.48
(1,69)	1:41:A:SER:C	1:42:A:ASN:N	1:42:A:ASN:CA	1:42:A:ASN:C	6	2.74	1.93	1.66
(1,144)	1:86:A:ILE:N	1:86:A:ILE:CA	1:86:A:ILE:C	1:87:A:LYS:N	6	2.27	1.16	2.0
(1,189)	1:110:A:TYR:C	1:111:A:ALA:N	1:111:A:ALA:CA	1:111:A:ALA:C	6	1.91	1.28	1.45
(1,112)	1:67:A:THR:N	1:67:A:THR:CA	1:67:A:THR:C	1:68:A:ASP:N	6	1.76	0.57	1.62
(1,115)	1:69:A:SER:C	1:70:A:LEU:N	1:70:A:LEU:CA	1:70:A:LEU:C	6	1.63	0.33	1.7
(1,181)	1:106:A:GLY:C	1:107:A:ASN:N	1:107:A:ASN:CA	1:107:A:ASN:C	6	1.33	0.29	1.18
(1,31)	1:21:A:ASN:C	1:22:A:THR:N	1:22:A:THR:CA	1:22:A:THR:C	6	1.33	0.25	1.26
(1,59)	1:36:A:THR:C	1:37:A:PHE:N	1:37:A:PHE:CA	1:37:A:PHE:C	5	1.95	0.61	1.86
(1,79)	1:47:A:SER:C	1:48:A:VAL:N	1:48:A:VAL:CA	1:48:A:VAL:C	5	1.9	0.81	1.72
(1,71)	1:43:A:PRO:C	1:44:A:TYR:N	1:44:A:TYR:CA	1:44:A:TYR:C	5	1.89	0.67	1.73
(1,58)	1:36:A:THR:N	1:36:A:THR:CA	1:36:A:THR:C	1:37:A:PHE:N	5	1.84	0.75	1.43
(1,49)	1:30:A:ALA:C	1:31:A:ILE:N	1:31:A:ILE:CA	1:31:A:ILE:C	5	1.83	0.24	1.79
(1,75)	1:45:A:ASP:C	1:46:A:ILE:N	1:46:A:ILE:CA	1:46:A:ILE:C	5	1.56	0.44	1.35
(1,63)	1:38:A:ASP:C	1:39:A:TYR:N	1:39:A:TYR:CA	1:39:A:TYR:C	5	1.46	0.28	1.6
(1,1)	1:4:A:GLY:C	1:5:A:THR:N	1:5:A:THR:CA	1:5:A:THR:C	5	1.4	0.43	1.11
(1,165)	1:98:A:SER:C	1:99:A:ALA:N	1:99:A:ALA:CA	1:99:A:ALA:C	5	1.38	0.52	1.12
(1,77)	1:46:A:ILE:C	1:47:A:SER:N	1:47:A:SER:CA	1:47:A:SER:C	5	1.34	0.17	1.45
(1,26)	1:19:A:ASN:N	1:19:A:ASN:CA	1:19:A:ASN:C	1:20:A:PHE:N	5	1.24	0.24	1.16
(1,68)	1:41:A:SER:N	1:41:A:SER:CA	1:41:A:SER:C	1:42:A:ASN:N	4	3.71	1.76	3.41
(1,109)	1:65:A:ASP:C	1:66:A:SER:N	1:66:A:SER:CA	1:66:A:SER:C	4	1.86	0.93	1.5
(1,190)	1:111:A:ALA:N	1:111:A:ALA:CA	1:111:A:ALA:C	1:112:A:ASN:N	4	1.82	1.16	1.19
(1,113)	1:68:A:ASP:C	1:69:A:SER:N	1:69:A:SER:CA	1:69:A:SER:C	4	1.81	0.32	1.84
(1,130)	1:77:A:LEU:N	1:77:A:LEU:CA	1:77:A:LEU:C	1:78:A:PRO:N	4	1.79	0.49	1.72
(1,51)	1:31:A:ILE:C	1:32:A:GLN:N	1:32:A:GLN:CA	1:32:A:GLN:C	4	1.58	0.3	1.6
(1,134)	1:81:A:ALA:N	1:81:A:ALA:CA	1:81:A:ALA:C	1:82:A:THR:N	4	1.52	0.34	1.46
(1,62)	1:38:A:ASP:N	1:38:A:ASP:CA	1:38:A:ASP:C	1:39:A:TYR:N	4	1.5	0.22	1.56
(1,48)	1:30:A:ALA:N	1:30:A:ALA:CA	1:30:A:ALA:C	1:31:A:ILE:N	4	1.43	0.16	1.42
(1,36)	1:24:A:TYR:N	1:24:A:TYR:CA	1:24:A:TYR:C	1:25:A:ASN:N	4	1.31	0.15	1.3
(1,82)	1:49:A:ASN:N	1:49:A:ASN:CA	1:49:A:ASN:C	1:50:A:LYS:N	4	1.25	0.12	1.25
(1,25)	1:18:A:TYR:C	1:19:A:ASN:N	1:19:A:ASN:CA	1:19:A:ASN:C	4	1.14	0.07	1.11
(1,140)	1:84:A:ILE:N	1:84:A:ILE:CA	1:84:A:ILE:C	1:85:A:SER:N	3	2.44	0.86	2.91

Continued on next page...

Continued from previous page...

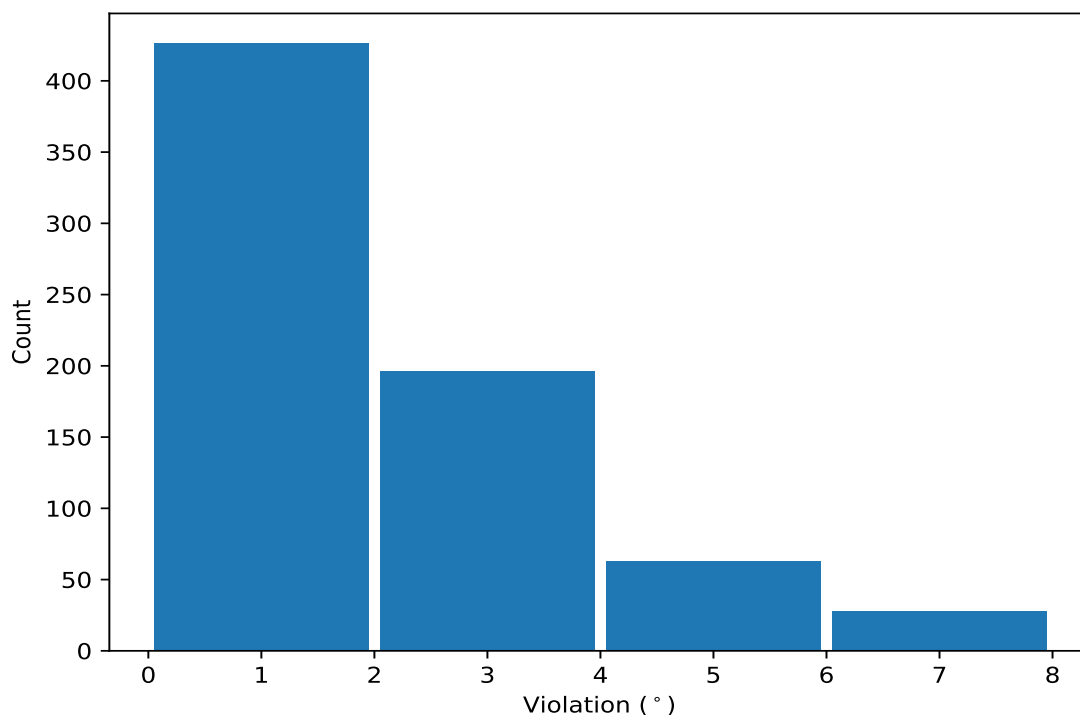
Key	Atom-1	Atom-2	Atom-3	Atom-4	Models ¹	Mean	SD ²	Median
(1,153)	1:92:A:GLY:C	1:93:A:ASN:N	1:93:A:ASN:CA	1:93:A:ASN:C	3	2.17	0.04	2.17
(1,9)	1:8:A:LYS:C	1:9:A:ASP:N	1:9:A:ASP:CA	1:9:A:ASP:C	3	2.05	0.64	1.94
(1,110)	1:66:A:SER:N	1:66:A:SER:CA	1:66:A:SER:C	1:67:A:THR:N	3	1.96	0.66	2.26
(1,187)	1:109:A:ARG:C	1:110:A:TYR:N	1:110:A:TYR:CA	1:110:A:TYR:C	3	1.88	0.97	1.26
(1,74)	1:45:A:ASP:N	1:45:A:ASP:CA	1:45:A:ASP:C	1:46:A:ILE:N	3	1.78	0.21	1.68
(1,107)	1:64:A:SER:C	1:65:A:ASP:N	1:65:A:ASP:CA	1:65:A:ASP:C	3	1.71	0.22	1.83
(1,124)	1:74:A:MET:N	1:74:A:MET:CA	1:74:A:MET:C	1:75:A:LYS:N	3	1.63	0.34	1.86
(1,123)	1:73:A:ALA:C	1:74:A:MET:N	1:74:A:MET:CA	1:74:A:MET:C	3	1.62	0.54	1.39
(1,98)	1:60:A:SER:N	1:60:A:SER:CA	1:60:A:SER:C	1:61:A:ALA:N	3	1.52	0.32	1.61
(1,114)	1:69:A:SER:N	1:69:A:SER:CA	1:69:A:SER:C	1:70:A:LEU:N	3	1.37	0.23	1.26
(1,118)	1:71:A:GLN:N	1:71:A:GLN:CA	1:71:A:GLN:C	1:72:A:VAL:N	3	1.26	0.17	1.35
(1,44)	1:28:A:LEU:N	1:28:A:LEU:CA	1:28:A:LEU:C	1:29:A:GLN:N	3	1.2	0.12	1.21
(1,117)	1:70:A:LEU:C	1:71:A:GLN:N	1:71:A:GLN:CA	1:71:A:GLN:C	3	1.03	0.02	1.04
(1,185)	1:108:A:ILE:C	1:109:A:ARG:N	1:109:A:ARG:CA	1:109:A:ARG:C	2	1.96	0.38	1.96
(1,29)	1:20:A:PHE:C	1:21:A:ASN:N	1:21:A:ASN:CA	1:21:A:ASN:C	2	1.88	0.17	1.88
(1,184)	1:108:A:ILE:N	1:108:A:ILE:CA	1:108:A:ILE:C	1:109:A:ARG:N	2	1.82	0.51	1.82
(1,76)	1:46:A:ILE:N	1:46:A:ILE:CA	1:46:A:ILE:C	1:47:A:SER:N	2	1.82	0.64	1.82
(1,106)	1:64:A:SER:N	1:64:A:SER:CA	1:64:A:SER:C	1:65:A:ASP:N	2	1.58	0.27	1.58
(1,192)	1:112:A:ASN:N	1:112:A:ASN:CA	1:112:A:ASN:C	1:113:A:THR:N	2	1.47	0.42	1.47
(1,13)	1:11:A:TYR:C	1:12:A:TYR:N	1:12:A:TYR:CA	1:12:A:TYR:C	2	1.32	0.17	1.32
(1,64)	1:39:A:TYR:N	1:39:A:TYR:CA	1:39:A:TYR:C	1:40:A:LYS:N	2	1.29	0.07	1.29
(1,152)	1:91:A:GLN:N	1:91:A:GLN:CA	1:91:A:GLN:C	1:92:A:GLY:N	2	1.21	0.16	1.21
(1,30)	1:21:A:ASN:N	1:21:A:ASN:CA	1:21:A:ASN:C	1:22:A:THR:N	2	1.16	0.1	1.16
(1,90)	1:56:A:ALA:N	1:56:A:ALA:CA	1:56:A:ALA:C	1:57:A:GLU:N	2	1.16	0.15	1.16

¹ Number of violated models, ²Standard deviation, All angle values are in degree (°)

10.5 All violated dihedral-angle restraints

10.5.1 Histogram : Distribution of violations

The following histogram shows the distribution of the absolute value of the violation for all violated restraints in the ensemble.



10.5.2 Table: All violated dihedral-angle restraints [i](#)

The following table lists the absolute value of the violation for each restraint in the ensemble sorted by its value. The Key (restraint list ID, restraint ID) is the unique identifier for a given restraint.

Key	Atom-1	Atom-2	Atom-3	Atom-4	Model ID	Violation (°)
(1,85)	1:50:A:LYS:C	1:51:A:ASN:N	1:51:A:ASN:CA	1:51:A:ASN:C	9	7.93
(1,81)	1:48:A:VAL:C	1:49:A:ASN:N	1:49:A:ASN:CA	1:49:A:ASN:C	14	7.69
(1,73)	1:44:A:TYR:C	1:45:A:ASP:N	1:45:A:ASP:CA	1:45:A:ASP:C	3	7.31
(1,84)	1:50:A:LYS:N	1:50:A:LYS:CA	1:50:A:LYS:C	1:51:A:ASN:N	2	7.24
(1,85)	1:50:A:LYS:C	1:51:A:ASN:N	1:51:A:ASN:CA	1:51:A:ASN:C	19	7.23
(1,85)	1:50:A:LYS:C	1:51:A:ASN:N	1:51:A:ASN:CA	1:51:A:ASN:C	2	7.09
(1,70)	1:42:A:ASN:N	1:42:A:ASN:CA	1:42:A:ASN:C	1:43:A:PRO:N	14	7.03
(1,70)	1:42:A:ASN:N	1:42:A:ASN:CA	1:42:A:ASN:C	1:43:A:PRO:N	20	6.88
(1,81)	1:48:A:VAL:C	1:49:A:ASN:N	1:49:A:ASN:CA	1:49:A:ASN:C	10	6.82
(1,84)	1:50:A:LYS:N	1:50:A:LYS:CA	1:50:A:LYS:C	1:51:A:ASN:N	12	6.79
(1,81)	1:48:A:VAL:C	1:49:A:ASN:N	1:49:A:ASN:CA	1:49:A:ASN:C	11	6.66
(1,84)	1:50:A:LYS:N	1:50:A:LYS:CA	1:50:A:LYS:C	1:51:A:ASN:N	19	6.65
(1,85)	1:50:A:LYS:C	1:51:A:ASN:N	1:51:A:ASN:CA	1:51:A:ASN:C	12	6.62
(1,81)	1:48:A:VAL:C	1:49:A:ASN:N	1:49:A:ASN:CA	1:49:A:ASN:C	1	6.59
(1,80)	1:48:A:VAL:N	1:48:A:VAL:CA	1:48:A:VAL:C	1:49:A:ASN:N	10	6.58
(1,81)	1:48:A:VAL:C	1:49:A:ASN:N	1:49:A:ASN:CA	1:49:A:ASN:C	17	6.51
(1,84)	1:50:A:LYS:N	1:50:A:LYS:CA	1:50:A:LYS:C	1:51:A:ASN:N	9	6.42
(1,69)	1:41:A:SER:C	1:42:A:ASN:N	1:42:A:ASN:CA	1:42:A:ASN:C	20	6.25
(1,80)	1:48:A:VAL:N	1:48:A:VAL:CA	1:48:A:VAL:C	1:49:A:ASN:N	17	6.24
(1,73)	1:44:A:TYR:C	1:45:A:ASP:N	1:45:A:ASP:CA	1:45:A:ASP:C	11	6.24
(1,80)	1:48:A:VAL:N	1:48:A:VAL:CA	1:48:A:VAL:C	1:49:A:ASN:N	14	6.15

Continued on next page...

Continued from previous page...

Key	Atom-1	Atom-2	Atom-3	Atom-4	Model ID	Violation (°)
(1,72)	1:44:A:TYR:N	1:44:A:TYR:CA	1:44:A:TYR:C	1:45:A:ASP:N	13	6.15
(1,85)	1:50:A:LYS:C	1:51:A:ASN:N	1:51:A:ASN:CA	1:51:A:ASN:C	7	6.07
(1,68)	1:41:A:SER:N	1:41:A:SER:CA	1:41:A:SER:C	1:42:A:ASN:N	20	6.06
(1,84)	1:50:A:LYS:N	1:50:A:LYS:CA	1:50:A:LYS:C	1:51:A:ASN:N	5	6.04
(1,145)	1:86:A:ILE:C	1:87:A:LYS:N	1:87:A:LYS:CA	1:87:A:LYS:C	14	6.02
(1,81)	1:48:A:VAL:C	1:49:A:ASN:N	1:49:A:ASN:CA	1:49:A:ASN:C	16	6.0
(1,80)	1:48:A:VAL:N	1:48:A:VAL:CA	1:48:A:VAL:C	1:49:A:ASN:N	1	6.0
(1,80)	1:48:A:VAL:N	1:48:A:VAL:CA	1:48:A:VAL:C	1:49:A:ASN:N	9	5.97
(1,81)	1:48:A:VAL:C	1:49:A:ASN:N	1:49:A:ASN:CA	1:49:A:ASN:C	19	5.81
(1,85)	1:50:A:LYS:C	1:51:A:ASN:N	1:51:A:ASN:CA	1:51:A:ASN:C	5	5.79
(1,146)	1:87:A:LYS:N	1:87:A:LYS:CA	1:87:A:LYS:C	1:88:A:TYR:N	15	5.78
(1,80)	1:48:A:VAL:N	1:48:A:VAL:CA	1:48:A:VAL:C	1:49:A:ASN:N	16	5.71
(1,73)	1:44:A:TYR:C	1:45:A:ASP:N	1:45:A:ASP:CA	1:45:A:ASP:C	18	5.62
(1,73)	1:44:A:TYR:C	1:45:A:ASP:N	1:45:A:ASP:CA	1:45:A:ASP:C	10	5.6
(1,72)	1:44:A:TYR:N	1:44:A:TYR:CA	1:44:A:TYR:C	1:45:A:ASP:N	7	5.59
(1,85)	1:50:A:LYS:C	1:51:A:ASN:N	1:51:A:ASN:CA	1:51:A:ASN:C	11	5.55
(1,81)	1:48:A:VAL:C	1:49:A:ASN:N	1:49:A:ASN:CA	1:49:A:ASN:C	9	5.53
(1,84)	1:50:A:LYS:N	1:50:A:LYS:CA	1:50:A:LYS:C	1:51:A:ASN:N	18	5.49
(1,81)	1:48:A:VAL:C	1:49:A:ASN:N	1:49:A:ASN:CA	1:49:A:ASN:C	5	5.49
(1,80)	1:48:A:VAL:N	1:48:A:VAL:CA	1:48:A:VAL:C	1:49:A:ASN:N	11	5.49
(1,85)	1:50:A:LYS:C	1:51:A:ASN:N	1:51:A:ASN:CA	1:51:A:ASN:C	3	5.39
(1,80)	1:48:A:VAL:N	1:48:A:VAL:CA	1:48:A:VAL:C	1:49:A:ASN:N	7	5.27
(1,73)	1:44:A:TYR:C	1:45:A:ASP:N	1:45:A:ASP:CA	1:45:A:ASP:C	1	5.22
(1,73)	1:44:A:TYR:C	1:45:A:ASP:N	1:45:A:ASP:CA	1:45:A:ASP:C	13	5.13
(1,81)	1:48:A:VAL:C	1:49:A:ASN:N	1:49:A:ASN:CA	1:49:A:ASN:C	2	5.1
(1,73)	1:44:A:TYR:C	1:45:A:ASP:N	1:45:A:ASP:CA	1:45:A:ASP:C	7	5.09
(1,84)	1:50:A:LYS:N	1:50:A:LYS:CA	1:50:A:LYS:C	1:51:A:ASN:N	7	5.08
(1,73)	1:44:A:TYR:C	1:45:A:ASP:N	1:45:A:ASP:CA	1:45:A:ASP:C	6	5.01
(1,72)	1:44:A:TYR:N	1:44:A:TYR:CA	1:44:A:TYR:C	1:45:A:ASP:N	1	4.91
(1,72)	1:44:A:TYR:N	1:44:A:TYR:CA	1:44:A:TYR:C	1:45:A:ASP:N	17	4.88
(1,80)	1:48:A:VAL:N	1:48:A:VAL:CA	1:48:A:VAL:C	1:49:A:ASN:N	2	4.86
(1,108)	1:65:A:ASP:N	1:65:A:ASP:CA	1:65:A:ASP:C	1:66:A:SER:N	18	4.79
(1,151)	1:90:A:SER:C	1:91:A:GLN:N	1:91:A:GLN:CA	1:91:A:GLN:C	20	4.78
(1,72)	1:44:A:TYR:N	1:44:A:TYR:CA	1:44:A:TYR:C	1:45:A:ASP:N	18	4.78
(1,68)	1:41:A:SER:N	1:41:A:SER:CA	1:41:A:SER:C	1:42:A:ASN:N	14	4.77
(1,73)	1:44:A:TYR:C	1:45:A:ASP:N	1:45:A:ASP:CA	1:45:A:ASP:C	17	4.75
(1,189)	1:110:A:TYR:C	1:111:A:ALA:N	1:111:A:ALA:CA	1:111:A:ALA:C	14	4.74
(1,72)	1:44:A:TYR:N	1:44:A:TYR:CA	1:44:A:TYR:C	1:45:A:ASP:N	3	4.74
(1,85)	1:50:A:LYS:C	1:51:A:ASN:N	1:51:A:ASN:CA	1:51:A:ASN:C	6	4.73
(1,144)	1:86:A:ILE:N	1:86:A:ILE:CA	1:86:A:ILE:C	1:87:A:LYS:N	14	4.72
(1,84)	1:50:A:LYS:N	1:50:A:LYS:CA	1:50:A:LYS:C	1:51:A:ASN:N	3	4.72
(1,81)	1:48:A:VAL:C	1:49:A:ASN:N	1:49:A:ASN:CA	1:49:A:ASN:C	20	4.65
(1,147)	1:87:A:LYS:C	1:88:A:TYR:N	1:88:A:TYR:CA	1:88:A:TYR:C	15	4.64
(1,81)	1:48:A:VAL:C	1:49:A:ASN:N	1:49:A:ASN:CA	1:49:A:ASN:C	18	4.64
(1,145)	1:86:A:ILE:C	1:87:A:LYS:N	1:87:A:LYS:CA	1:87:A:LYS:C	8	4.62
(1,80)	1:48:A:VAL:N	1:48:A:VAL:CA	1:48:A:VAL:C	1:49:A:ASN:N	19	4.57
(1,81)	1:48:A:VAL:C	1:49:A:ASN:N	1:49:A:ASN:CA	1:49:A:ASN:C	3	4.51
(1,85)	1:50:A:LYS:C	1:51:A:ASN:N	1:51:A:ASN:CA	1:51:A:ASN:C	18	4.5
(1,73)	1:44:A:TYR:C	1:45:A:ASP:N	1:45:A:ASP:CA	1:45:A:ASP:C	9	4.5
(1,72)	1:44:A:TYR:N	1:44:A:TYR:CA	1:44:A:TYR:C	1:45:A:ASP:N	8	4.46
(1,69)	1:41:A:SER:C	1:42:A:ASN:N	1:42:A:ASN:CA	1:42:A:ASN:C	14	4.44

Continued on next page...

Continued from previous page...

Key	Atom-1	Atom-2	Atom-3	Atom-4	Model ID	Violation (°)
(1,145)	1:86:A:ILE:C	1:87:A:LYS:N	1:87:A:LYS:CA	1:87:A:LYS:C	1	4.43
(1,8)	1:8:A:LYS:N	1:8:A:LYS:CA	1:8:A:LYS:C	1:9:A:ASP:N	18	4.43
(1,81)	1:48:A:VAL:C	1:49:A:ASN:N	1:49:A:ASN:CA	1:49:A:ASN:C	6	4.42
(1,72)	1:44:A:TYR:N	1:44:A:TYR:CA	1:44:A:TYR:C	1:45:A:ASP:N	6	4.42
(1,8)	1:8:A:LYS:N	1:8:A:LYS:CA	1:8:A:LYS:C	1:9:A:ASP:N	5	4.39
(1,85)	1:50:A:LYS:C	1:51:A:ASN:N	1:51:A:ASN:CA	1:51:A:ASN:C	20	4.3
(1,191)	1:111:A:ALA:C	1:112:A:ASN:N	1:112:A:ASN:CA	1:112:A:ASN:C	14	4.29
(1,73)	1:44:A:TYR:C	1:45:A:ASP:N	1:45:A:ASP:CA	1:45:A:ASP:C	16	4.28
(1,73)	1:44:A:TYR:C	1:45:A:ASP:N	1:45:A:ASP:CA	1:45:A:ASP:C	8	4.24
(1,81)	1:48:A:VAL:C	1:49:A:ASN:N	1:49:A:ASN:CA	1:49:A:ASN:C	12	4.23
(1,78)	1:47:A:SER:N	1:47:A:SER:CA	1:47:A:SER:C	1:48:A:VAL:N	3	4.23
(1,66)	1:40:A:LYS:N	1:40:A:LYS:CA	1:40:A:LYS:C	1:41:A:SER:N	11	4.22
(1,85)	1:50:A:LYS:C	1:51:A:ASN:N	1:51:A:ASN:CA	1:51:A:ASN:C	15	4.21
(1,145)	1:86:A:ILE:C	1:87:A:LYS:N	1:87:A:LYS:CA	1:87:A:LYS:C	5	4.2
(1,145)	1:86:A:ILE:C	1:87:A:LYS:N	1:87:A:LYS:CA	1:87:A:LYS:C	20	4.19
(1,145)	1:86:A:ILE:C	1:87:A:LYS:N	1:87:A:LYS:CA	1:87:A:LYS:C	6	4.16
(1,80)	1:48:A:VAL:N	1:48:A:VAL:CA	1:48:A:VAL:C	1:49:A:ASN:N	3	4.04
(1,80)	1:48:A:VAL:N	1:48:A:VAL:CA	1:48:A:VAL:C	1:49:A:ASN:N	15	4.04
(1,154)	1:93:A:ASN:N	1:93:A:ASN:CA	1:93:A:ASN:C	1:94:A:SER:N	12	4.03
(1,81)	1:48:A:VAL:C	1:49:A:ASN:N	1:49:A:ASN:CA	1:49:A:ASN:C	15	3.99
(1,84)	1:50:A:LYS:N	1:50:A:LYS:CA	1:50:A:LYS:C	1:51:A:ASN:N	20	3.97
(1,80)	1:48:A:VAL:N	1:48:A:VAL:CA	1:48:A:VAL:C	1:49:A:ASN:N	8	3.89
(1,80)	1:48:A:VAL:N	1:48:A:VAL:CA	1:48:A:VAL:C	1:49:A:ASN:N	18	3.83
(1,190)	1:111:A:ALA:N	1:111:A:ALA:CA	1:111:A:ALA:C	1:112:A:ASN:N	14	3.82
(1,84)	1:50:A:LYS:N	1:50:A:LYS:CA	1:50:A:LYS:C	1:51:A:ASN:N	15	3.8
(1,72)	1:44:A:TYR:N	1:44:A:TYR:CA	1:44:A:TYR:C	1:45:A:ASP:N	10	3.8
(1,80)	1:48:A:VAL:N	1:48:A:VAL:CA	1:48:A:VAL:C	1:49:A:ASN:N	5	3.79
(1,81)	1:48:A:VAL:C	1:49:A:ASN:N	1:49:A:ASN:CA	1:49:A:ASN:C	7	3.77
(1,5)	1:6:A:GLN:C	1:7:A:TYR:N	1:7:A:TYR:CA	1:7:A:TYR:C	13	3.75
(1,80)	1:48:A:VAL:N	1:48:A:VAL:CA	1:48:A:VAL:C	1:49:A:ASN:N	20	3.74
(1,188)	1:110:A:TYR:N	1:110:A:TYR:CA	1:110:A:TYR:C	1:111:A:ALA:N	14	3.73
(1,84)	1:50:A:LYS:N	1:50:A:LYS:CA	1:50:A:LYS:C	1:51:A:ASN:N	11	3.71
(1,73)	1:44:A:TYR:C	1:45:A:ASP:N	1:45:A:ASP:CA	1:45:A:ASP:C	5	3.67
(1,145)	1:86:A:ILE:C	1:87:A:LYS:N	1:87:A:LYS:CA	1:87:A:LYS:C	4	3.62
(1,154)	1:93:A:ASN:N	1:93:A:ASN:CA	1:93:A:ASN:C	1:94:A:SER:N	10	3.61
(1,80)	1:48:A:VAL:N	1:48:A:VAL:CA	1:48:A:VAL:C	1:49:A:ASN:N	12	3.61
(1,150)	1:90:A:SER:N	1:90:A:SER:CA	1:90:A:SER:C	1:91:A:GLN:N	20	3.59
(1,81)	1:48:A:VAL:C	1:49:A:ASN:N	1:49:A:ASN:CA	1:49:A:ASN:C	4	3.59
(1,176)	1:104:A:ILE:N	1:104:A:ILE:CA	1:104:A:ILE:C	1:105:A:GLU:N	5	3.56
(1,72)	1:44:A:TYR:N	1:44:A:TYR:CA	1:44:A:TYR:C	1:45:A:ASP:N	11	3.55
(1,145)	1:86:A:ILE:C	1:87:A:LYS:N	1:87:A:LYS:CA	1:87:A:LYS:C	18	3.5
(1,72)	1:44:A:TYR:N	1:44:A:TYR:CA	1:44:A:TYR:C	1:45:A:ASP:N	9	3.5
(1,139)	1:83:A:ARG:C	1:84:A:ILE:N	1:84:A:ILE:CA	1:84:A:ILE:C	18	3.49
(1,84)	1:50:A:LYS:N	1:50:A:LYS:CA	1:50:A:LYS:C	1:51:A:ASN:N	8	3.49
(1,79)	1:47:A:SER:C	1:48:A:VAL:N	1:48:A:VAL:CA	1:48:A:VAL:C	3	3.43
(1,177)	1:104:A:ILE:C	1:105:A:GLU:N	1:105:A:GLU:CA	1:105:A:GLU:C	15	3.38
(1,109)	1:65:A:ASP:C	1:66:A:SER:N	1:66:A:SER:CA	1:66:A:SER:C	18	3.38
(1,146)	1:87:A:LYS:N	1:87:A:LYS:CA	1:87:A:LYS:C	1:88:A:TYR:N	20	3.35
(1,5)	1:6:A:GLN:C	1:7:A:TYR:N	1:7:A:TYR:CA	1:7:A:TYR:C	15	3.35
(1,146)	1:87:A:LYS:N	1:87:A:LYS:CA	1:87:A:LYS:C	1:88:A:TYR:N	9	3.34
(1,191)	1:111:A:ALA:C	1:112:A:ASN:N	1:112:A:ASN:CA	1:112:A:ASN:C	10	3.33

Continued on next page...

Continued from previous page...

Key	Atom-1	Atom-2	Atom-3	Atom-4	Model ID	Violation (°)
(1,176)	1:104:A:ILE:N	1:104:A:ILE:CA	1:104:A:ILE:C	1:105:A:GLU:N	14	3.33
(1,66)	1:40:A:LYS:N	1:40:A:LYS:CA	1:40:A:LYS:C	1:41:A:SER:N	9	3.32
(1,139)	1:83:A:ARG:C	1:84:A:ILE:N	1:84:A:ILE:CA	1:84:A:ILE:C	3	3.31
(1,138)	1:83:A:ARG:N	1:83:A:ARG:CA	1:83:A:ARG:C	1:84:A:ILE:N	18	3.31
(1,145)	1:86:A:ILE:C	1:87:A:LYS:N	1:87:A:LYS:CA	1:87:A:LYS:C	11	3.3
(1,81)	1:48:A:VAL:C	1:49:A:ASN:N	1:49:A:ASN:CA	1:49:A:ASN:C	8	3.3
(1,73)	1:44:A:TYR:C	1:45:A:ASP:N	1:45:A:ASP:CA	1:45:A:ASP:C	19	3.29
(1,73)	1:44:A:TYR:C	1:45:A:ASP:N	1:45:A:ASP:CA	1:45:A:ASP:C	20	3.28
(1,187)	1:109:A:ARG:C	1:110:A:TYR:N	1:110:A:TYR:CA	1:110:A:TYR:C	14	3.25
(1,141)	1:84:A:ILE:C	1:85:A:SER:N	1:85:A:SER:CA	1:85:A:SER:C	12	3.21
(1,139)	1:83:A:ARG:C	1:84:A:ILE:N	1:84:A:ILE:CA	1:84:A:ILE:C	14	3.21
(1,145)	1:86:A:ILE:C	1:87:A:LYS:N	1:87:A:LYS:CA	1:87:A:LYS:C	15	3.2
(1,84)	1:50:A:LYS:N	1:50:A:LYS:CA	1:50:A:LYS:C	1:51:A:ASN:N	6	3.2
(1,80)	1:48:A:VAL:N	1:48:A:VAL:CA	1:48:A:VAL:C	1:49:A:ASN:N	13	3.19
(1,140)	1:84:A:ILE:N	1:84:A:ILE:CA	1:84:A:ILE:C	1:85:A:SER:N	17	3.18
(1,138)	1:83:A:ARG:N	1:83:A:ARG:CA	1:83:A:ARG:C	1:84:A:ILE:N	20	3.16
(1,73)	1:44:A:TYR:C	1:45:A:ASP:N	1:45:A:ASP:CA	1:45:A:ASP:C	4	3.16
(1,72)	1:44:A:TYR:N	1:44:A:TYR:CA	1:44:A:TYR:C	1:45:A:ASP:N	4	3.16
(1,85)	1:50:A:LYS:C	1:51:A:ASN:N	1:51:A:ASN:CA	1:51:A:ASN:C	17	3.15
(1,81)	1:48:A:VAL:C	1:49:A:ASN:N	1:49:A:ASN:CA	1:49:A:ASN:C	13	3.13
(1,80)	1:48:A:VAL:N	1:48:A:VAL:CA	1:48:A:VAL:C	1:49:A:ASN:N	6	3.13
(1,66)	1:40:A:LYS:N	1:40:A:LYS:CA	1:40:A:LYS:C	1:41:A:SER:N	15	3.11
(1,176)	1:104:A:ILE:N	1:104:A:ILE:CA	1:104:A:ILE:C	1:105:A:GLU:N	16	3.1
(1,139)	1:83:A:ARG:C	1:84:A:ILE:N	1:84:A:ILE:CA	1:84:A:ILE:C	10	3.06
(1,139)	1:83:A:ARG:C	1:84:A:ILE:N	1:84:A:ILE:CA	1:84:A:ILE:C	20	3.06
(1,58)	1:36:A:THR:N	1:36:A:THR:CA	1:36:A:THR:C	1:37:A:PHE:N	12	3.06
(1,80)	1:48:A:VAL:N	1:48:A:VAL:CA	1:48:A:VAL:C	1:49:A:ASN:N	4	3.03
(1,85)	1:50:A:LYS:C	1:51:A:ASN:N	1:51:A:ASN:CA	1:51:A:ASN:C	10	3.0
(1,73)	1:44:A:TYR:C	1:45:A:ASP:N	1:45:A:ASP:CA	1:45:A:ASP:C	15	3.0
(1,145)	1:86:A:ILE:C	1:87:A:LYS:N	1:87:A:LYS:CA	1:87:A:LYS:C	9	2.99
(1,139)	1:83:A:ARG:C	1:84:A:ILE:N	1:84:A:ILE:CA	1:84:A:ILE:C	8	2.99
(1,85)	1:50:A:LYS:C	1:51:A:ASN:N	1:51:A:ASN:CA	1:51:A:ASN:C	8	2.98
(1,59)	1:36:A:THR:C	1:37:A:PHE:N	1:37:A:PHE:CA	1:37:A:PHE:C	12	2.97
(1,176)	1:104:A:ILE:N	1:104:A:ILE:CA	1:104:A:ILE:C	1:105:A:GLU:N	15	2.96
(1,4)	1:6:A:GLN:N	1:6:A:GLN:CA	1:6:A:GLN:C	1:7:A:TYR:N	13	2.96
(1,112)	1:67:A:THR:N	1:67:A:THR:CA	1:67:A:THR:C	1:68:A:ASP:N	5	2.93
(1,140)	1:84:A:ILE:N	1:84:A:ILE:CA	1:84:A:ILE:C	1:85:A:SER:N	12	2.91
(1,108)	1:65:A:ASP:N	1:65:A:ASP:CA	1:65:A:ASP:C	1:66:A:SER:N	13	2.9
(1,9)	1:8:A:LYS:C	1:9:A:ASP:N	1:9:A:ASP:CA	1:9:A:ASP:C	5	2.88
(1,73)	1:44:A:TYR:C	1:45:A:ASP:N	1:45:A:ASP:CA	1:45:A:ASP:C	14	2.87
(1,150)	1:90:A:SER:N	1:90:A:SER:CA	1:90:A:SER:C	1:91:A:GLN:N	13	2.86
(1,66)	1:40:A:LYS:N	1:40:A:LYS:CA	1:40:A:LYS:C	1:41:A:SER:N	1	2.85
(1,138)	1:83:A:ARG:N	1:83:A:ARG:CA	1:83:A:ARG:C	1:84:A:ILE:N	14	2.84
(1,10)	1:9:A:ASP:N	1:9:A:ASP:CA	1:9:A:ASP:C	1:10:A:GLY:N	10	2.84
(1,71)	1:43:A:PRO:C	1:44:A:TYR:N	1:44:A:TYR:CA	1:44:A:TYR:C	15	2.82
(1,139)	1:83:A:ARG:C	1:84:A:ILE:N	1:84:A:ILE:CA	1:84:A:ILE:C	12	2.8
(1,139)	1:83:A:ARG:C	1:84:A:ILE:N	1:84:A:ILE:CA	1:84:A:ILE:C	15	2.77
(1,150)	1:90:A:SER:N	1:90:A:SER:CA	1:90:A:SER:C	1:91:A:GLN:N	19	2.73
(1,72)	1:44:A:TYR:N	1:44:A:TYR:CA	1:44:A:TYR:C	1:45:A:ASP:N	5	2.73
(1,188)	1:110:A:TYR:N	1:110:A:TYR:CA	1:110:A:TYR:C	1:111:A:ALA:N	10	2.72
(1,176)	1:104:A:ILE:N	1:104:A:ILE:CA	1:104:A:ILE:C	1:105:A:GLU:N	7	2.72

Continued on next page...

Continued from previous page...

Key	Atom-1	Atom-2	Atom-3	Atom-4	Model ID	Violation (°)
(1,73)	1:44:A:TYR:C	1:45:A:ASP:N	1:45:A:ASP:CA	1:45:A:ASP:C	12	2.72
(1,72)	1:44:A:TYR:N	1:44:A:TYR:CA	1:44:A:TYR:C	1:45:A:ASP:N	15	2.72
(1,141)	1:84:A:ILE:C	1:85:A:SER:N	1:85:A:SER:CA	1:85:A:SER:C	17	2.71
(1,78)	1:47:A:SER:N	1:47:A:SER:CA	1:47:A:SER:C	1:48:A:VAL:N	18	2.68
(1,155)	1:93:A:ASN:C	1:94:A:SER:N	1:94:A:SER:CA	1:94:A:SER:C	7	2.66
(1,84)	1:50:A:LYS:N	1:50:A:LYS:CA	1:50:A:LYS:C	1:51:A:ASN:N	10	2.65
(1,176)	1:104:A:ILE:N	1:104:A:ILE:CA	1:104:A:ILE:C	1:105:A:GLU:N	1	2.62
(1,72)	1:44:A:TYR:N	1:44:A:TYR:CA	1:44:A:TYR:C	1:45:A:ASP:N	12	2.62
(1,147)	1:87:A:LYS:C	1:88:A:TYR:N	1:88:A:TYR:CA	1:88:A:TYR:C	2	2.61
(1,10)	1:9:A:ASP:N	1:9:A:ASP:CA	1:9:A:ASP:C	1:10:A:GLY:N	9	2.59
(1,110)	1:66:A:SER:N	1:66:A:SER:CA	1:66:A:SER:C	1:67:A:THR:N	1	2.58
(1,85)	1:50:A:LYS:C	1:51:A:ASN:N	1:51:A:ASN:CA	1:51:A:ASN:C	13	2.58
(1,108)	1:65:A:ASP:N	1:65:A:ASP:CA	1:65:A:ASP:C	1:66:A:SER:N	14	2.57
(1,72)	1:44:A:TYR:N	1:44:A:TYR:CA	1:44:A:TYR:C	1:45:A:ASP:N	19	2.57
(1,130)	1:77:A:LEU:N	1:77:A:LEU:CA	1:77:A:LEU:C	1:78:A:PRO:N	10	2.55
(1,191)	1:111:A:ALA:C	1:112:A:ASN:N	1:112:A:ASN:CA	1:112:A:ASN:C	19	2.53
(1,150)	1:90:A:SER:N	1:90:A:SER:CA	1:90:A:SER:C	1:91:A:GLN:N	12	2.53
(1,139)	1:83:A:ARG:C	1:84:A:ILE:N	1:84:A:ILE:CA	1:84:A:ILE:C	5	2.53
(1,125)	1:74:A:MET:C	1:75:A:LYS:N	1:75:A:LYS:CA	1:75:A:LYS:C	8	2.53
(1,78)	1:47:A:SER:N	1:47:A:SER:CA	1:47:A:SER:C	1:48:A:VAL:N	2	2.53
(1,78)	1:47:A:SER:N	1:47:A:SER:CA	1:47:A:SER:C	1:48:A:VAL:N	14	2.53
(1,72)	1:44:A:TYR:N	1:44:A:TYR:CA	1:44:A:TYR:C	1:45:A:ASP:N	16	2.53
(1,5)	1:6:A:GLN:C	1:7:A:TYR:N	1:7:A:TYR:CA	1:7:A:TYR:C	6	2.53
(1,84)	1:50:A:LYS:N	1:50:A:LYS:CA	1:50:A:LYS:C	1:51:A:ASN:N	13	2.52
(1,84)	1:50:A:LYS:N	1:50:A:LYS:CA	1:50:A:LYS:C	1:51:A:ASN:N	17	2.51
(1,72)	1:44:A:TYR:N	1:44:A:TYR:CA	1:44:A:TYR:C	1:45:A:ASP:N	14	2.5
(1,176)	1:104:A:ILE:N	1:104:A:ILE:CA	1:104:A:ILE:C	1:105:A:GLU:N	17	2.48
(1,116)	1:70:A:LEU:N	1:70:A:LEU:CA	1:70:A:LEU:C	1:71:A:GLN:N	11	2.48
(1,151)	1:90:A:SER:C	1:91:A:GLN:N	1:91:A:GLN:CA	1:91:A:GLN:C	12	2.46
(1,76)	1:46:A:ILE:N	1:46:A:ILE:CA	1:46:A:ILE:C	1:47:A:SER:N	20	2.46
(1,71)	1:43:A:PRO:C	1:44:A:TYR:N	1:44:A:TYR:CA	1:44:A:TYR:C	6	2.46
(1,78)	1:47:A:SER:N	1:47:A:SER:CA	1:47:A:SER:C	1:48:A:VAL:N	1	2.43
(1,8)	1:8:A:LYS:N	1:8:A:LYS:CA	1:8:A:LYS:C	1:9:A:ASP:N	15	2.43
(1,165)	1:98:A:SER:C	1:99:A:ALA:N	1:99:A:ALA:CA	1:99:A:ALA:C	17	2.42
(1,145)	1:86:A:ILE:C	1:87:A:LYS:N	1:87:A:LYS:CA	1:87:A:LYS:C	16	2.42
(1,139)	1:83:A:ARG:C	1:84:A:ILE:N	1:84:A:ILE:CA	1:84:A:ILE:C	19	2.4
(1,18)	1:14:A:THR:N	1:14:A:THR:CA	1:14:A:THR:C	1:15:A:THR:N	9	2.4
(1,178)	1:105:A:GLU:N	1:105:A:GLU:CA	1:105:A:GLU:C	1:106:A:GLY:N	15	2.39
(1,4)	1:6:A:GLN:N	1:6:A:GLN:CA	1:6:A:GLN:C	1:7:A:TYR:N	5	2.38
(1,138)	1:83:A:ARG:N	1:83:A:ARG:CA	1:83:A:ARG:C	1:84:A:ILE:N	10	2.37
(1,116)	1:70:A:LEU:N	1:70:A:LEU:CA	1:70:A:LEU:C	1:71:A:GLN:N	19	2.37
(1,104)	1:63:A:ASP:N	1:63:A:ASP:CA	1:63:A:ASP:C	1:64:A:SER:N	10	2.37
(1,10)	1:9:A:ASP:N	1:9:A:ASP:CA	1:9:A:ASP:C	1:10:A:GLY:N	3	2.37
(1,139)	1:83:A:ARG:C	1:84:A:ILE:N	1:84:A:ILE:CA	1:84:A:ILE:C	9	2.36
(1,123)	1:73:A:ALA:C	1:74:A:MET:N	1:74:A:MET:CA	1:74:A:MET:C	3	2.36
(1,10)	1:9:A:ASP:N	1:9:A:ASP:CA	1:9:A:ASP:C	1:10:A:GLY:N	11	2.36
(1,185)	1:108:A:ILE:C	1:109:A:ARG:N	1:109:A:ARG:CA	1:109:A:ARG:C	13	2.35
(1,58)	1:36:A:THR:N	1:36:A:THR:CA	1:36:A:THR:C	1:37:A:PHE:N	17	2.35
(1,104)	1:63:A:ASP:N	1:63:A:ASP:CA	1:63:A:ASP:C	1:64:A:SER:N	7	2.34
(1,184)	1:108:A:ILE:N	1:108:A:ILE:CA	1:108:A:ILE:C	1:109:A:ARG:N	13	2.33
(1,144)	1:86:A:ILE:N	1:86:A:ILE:CA	1:86:A:ILE:C	1:87:A:LYS:N	4	2.33

Continued on next page...

Continued from previous page...

Key	Atom-1	Atom-2	Atom-3	Atom-4	Model ID	Violation (°)
(1,148)	1:88:A:TYR:N	1:88:A:TYR:CA	1:88:A:TYR:C	1:89:A:GLY:N	4	2.3
(1,104)	1:63:A:ASP:N	1:63:A:ASP:CA	1:63:A:ASP:C	1:64:A:SER:N	12	2.3
(1,138)	1:83:A:ARG:N	1:83:A:ARG:CA	1:83:A:ARG:C	1:84:A:ILE:N	8	2.28
(1,188)	1:110:A:TYR:N	1:110:A:TYR:CA	1:110:A:TYR:C	1:111:A:ALA:N	12	2.27
(1,177)	1:104:A:ILE:C	1:105:A:GLU:N	1:105:A:GLU:CA	1:105:A:GLU:C	2	2.27
(1,146)	1:87:A:LYS:N	1:87:A:LYS:CA	1:87:A:LYS:C	1:88:A:TYR:N	12	2.27
(1,110)	1:66:A:SER:N	1:66:A:SER:CA	1:66:A:SER:C	1:67:A:THR:N	8	2.26
(1,49)	1:30:A:ALA:C	1:31:A:ILE:N	1:31:A:ILE:CA	1:31:A:ILE:C	15	2.26
(1,177)	1:104:A:ILE:C	1:105:A:GLU:N	1:105:A:GLU:CA	1:105:A:GLU:C	4	2.24
(1,150)	1:90:A:SER:N	1:90:A:SER:CA	1:90:A:SER:C	1:91:A:GLN:N	4	2.24
(1,59)	1:36:A:THR:C	1:37:A:PHE:N	1:37:A:PHE:CA	1:37:A:PHE:C	17	2.24
(1,10)	1:9:A:ASP:N	1:9:A:ASP:CA	1:9:A:ASP:C	1:10:A:GLY:N	16	2.24
(1,153)	1:92:A:GLY:C	1:93:A:ASN:N	1:93:A:ASN:CA	1:93:A:ASN:C	6	2.23
(1,113)	1:68:A:ASP:C	1:69:A:SER:N	1:69:A:SER:CA	1:69:A:SER:C	9	2.23
(1,89)	1:55:A:ASP:C	1:56:A:ALA:N	1:56:A:ALA:CA	1:56:A:ALA:C	7	2.22
(1,85)	1:50:A:LYS:C	1:51:A:ASN:N	1:51:A:ASN:CA	1:51:A:ASN:C	1	2.22
(1,177)	1:104:A:ILE:C	1:105:A:GLU:N	1:105:A:GLU:CA	1:105:A:GLU:C	14	2.21
(1,147)	1:87:A:LYS:C	1:88:A:TYR:N	1:88:A:TYR:CA	1:88:A:TYR:C	19	2.21
(1,78)	1:47:A:SER:N	1:47:A:SER:CA	1:47:A:SER:C	1:48:A:VAL:N	5	2.21
(1,10)	1:9:A:ASP:N	1:9:A:ASP:CA	1:9:A:ASP:C	1:10:A:GLY:N	13	2.21
(1,148)	1:88:A:TYR:N	1:88:A:TYR:CA	1:88:A:TYR:C	1:89:A:GLY:N	12	2.2
(1,176)	1:104:A:ILE:N	1:104:A:ILE:CA	1:104:A:ILE:C	1:105:A:GLU:N	8	2.19
(1,86)	1:51:A:ASN:N	1:51:A:ASN:CA	1:51:A:ASN:C	1:52:A:ASN:N	2	2.19
(1,188)	1:110:A:TYR:N	1:110:A:TYR:CA	1:110:A:TYR:C	1:111:A:ALA:N	19	2.17
(1,153)	1:92:A:GLY:C	1:93:A:ASN:N	1:93:A:ASN:CA	1:93:A:ASN:C	14	2.17
(1,147)	1:87:A:LYS:C	1:88:A:TYR:N	1:88:A:TYR:CA	1:88:A:TYR:C	6	2.16
(1,141)	1:84:A:ILE:C	1:85:A:SER:N	1:85:A:SER:CA	1:85:A:SER:C	10	2.16
(1,10)	1:9:A:ASP:N	1:9:A:ASP:CA	1:9:A:ASP:C	1:10:A:GLY:N	20	2.16
(1,157)	1:94:A:SER:C	1:95:A:ILE:N	1:95:A:ILE:CA	1:95:A:ILE:C	7	2.15
(1,84)	1:50:A:LYS:N	1:50:A:LYS:CA	1:50:A:LYS:C	1:51:A:ASN:N	1	2.14
(1,50)	1:31:A:ILE:N	1:31:A:ILE:CA	1:31:A:ILE:C	1:32:A:GLN:N	17	2.14
(1,137)	1:82:A:THR:C	1:83:A:ARG:N	1:83:A:ARG:CA	1:83:A:ARG:C	13	2.13
(1,104)	1:63:A:ASP:N	1:63:A:ASP:CA	1:63:A:ASP:C	1:64:A:SER:N	9	2.13
(1,78)	1:47:A:SER:N	1:47:A:SER:CA	1:47:A:SER:C	1:48:A:VAL:N	11	2.13
(1,5)	1:6:A:GLN:C	1:7:A:TYR:N	1:7:A:TYR:CA	1:7:A:TYR:C	2	2.13
(1,177)	1:104:A:ILE:C	1:105:A:GLU:N	1:105:A:GLU:CA	1:105:A:GLU:C	5	2.12
(1,153)	1:92:A:GLY:C	1:93:A:ASN:N	1:93:A:ASN:CA	1:93:A:ASN:C	11	2.12
(1,115)	1:69:A:SER:C	1:70:A:LEU:N	1:70:A:LEU:CA	1:70:A:LEU:C	20	2.12
(1,50)	1:31:A:ILE:N	1:31:A:ILE:CA	1:31:A:ILE:C	1:32:A:GLN:N	18	2.12
(1,176)	1:104:A:ILE:N	1:104:A:ILE:CA	1:104:A:ILE:C	1:105:A:GLU:N	2	2.11
(1,176)	1:104:A:ILE:N	1:104:A:ILE:CA	1:104:A:ILE:C	1:105:A:GLU:N	9	2.11
(1,141)	1:84:A:ILE:C	1:85:A:SER:N	1:85:A:SER:CA	1:85:A:SER:C	18	2.11
(1,75)	1:45:A:ASP:C	1:46:A:ILE:N	1:46:A:ILE:CA	1:46:A:ILE:C	6	2.1
(1,148)	1:88:A:TYR:N	1:88:A:TYR:CA	1:88:A:TYR:C	1:89:A:GLY:N	17	2.09
(1,75)	1:45:A:ASP:C	1:46:A:ILE:N	1:46:A:ILE:CA	1:46:A:ILE:C	3	2.09
(1,10)	1:9:A:ASP:N	1:9:A:ASP:CA	1:9:A:ASP:C	1:10:A:GLY:N	8	2.09
(1,176)	1:104:A:ILE:N	1:104:A:ILE:CA	1:104:A:ILE:C	1:105:A:GLU:N	4	2.08
(1,5)	1:6:A:GLN:C	1:7:A:TYR:N	1:7:A:TYR:CA	1:7:A:TYR:C	5	2.08
(1,74)	1:45:A:ASP:N	1:45:A:ASP:CA	1:45:A:ASP:C	1:46:A:ILE:N	14	2.07
(1,177)	1:104:A:ILE:C	1:105:A:GLU:N	1:105:A:GLU:CA	1:105:A:GLU:C	1	2.05
(1,68)	1:41:A:SER:N	1:41:A:SER:CA	1:41:A:SER:C	1:42:A:ASN:N	2	2.05

Continued on next page...

Continued from previous page...

Key	Atom-1	Atom-2	Atom-3	Atom-4	Model ID	Violation (°)
(1,29)	1:20:A:PHE:C	1:21:A:ASN:N	1:21:A:ASN:CA	1:21:A:ASN:C	16	2.05
(1,134)	1:81:A:ALA:N	1:81:A:ALA:CA	1:81:A:ALA:C	1:82:A:THR:N	14	2.04
(1,85)	1:50:A:LYS:C	1:51:A:ASN:N	1:51:A:ASN:CA	1:51:A:ASN:C	16	2.04
(1,5)	1:6:A:GLN:C	1:7:A:TYR:N	1:7:A:TYR:CA	1:7:A:TYR:C	19	2.04
(1,127)	1:75:A:LYS:C	1:76:A:LYS:N	1:76:A:LYS:CA	1:76:A:LYS:C	10	2.03
(1,24)	1:18:A:TYR:N	1:18:A:TYR:CA	1:18:A:TYR:C	1:19:A:ASN:N	14	2.02
(1,176)	1:104:A:ILE:N	1:104:A:ILE:CA	1:104:A:ILE:C	1:105:A:GLU:N	6	2.01
(1,144)	1:86:A:ILE:N	1:86:A:ILE:CA	1:86:A:ILE:C	1:87:A:LYS:N	11	2.01
(1,177)	1:104:A:ILE:C	1:105:A:GLU:N	1:105:A:GLU:CA	1:105:A:GLU:C	16	2.0
(1,155)	1:93:A:ASN:C	1:94:A:SER:N	1:94:A:SER:CA	1:94:A:SER:C	6	2.0
(1,1)	1:4:A:GLY:C	1:5:A:THR:N	1:5:A:THR:CA	1:5:A:THR:C	15	2.0
(1,70)	1:42:A:ASN:N	1:42:A:ASN:CA	1:42:A:ASN:C	1:43:A:PRO:N	11	1.99
(1,176)	1:104:A:ILE:N	1:104:A:ILE:CA	1:104:A:ILE:C	1:105:A:GLU:N	13	1.98
(1,144)	1:86:A:ILE:N	1:86:A:ILE:CA	1:86:A:ILE:C	1:87:A:LYS:N	1	1.98
(1,85)	1:50:A:LYS:C	1:51:A:ASN:N	1:51:A:ASN:CA	1:51:A:ASN:C	14	1.98
(1,51)	1:31:A:ILE:C	1:32:A:GLN:N	1:32:A:GLN:CA	1:32:A:GLN:C	18	1.98
(1,32)	1:22:A:THR:N	1:22:A:THR:CA	1:22:A:THR:C	1:23:A:VAL:N	14	1.98
(1,126)	1:75:A:LYS:N	1:75:A:LYS:CA	1:75:A:LYS:C	1:76:A:LYS:N	17	1.97
(1,104)	1:63:A:ASP:N	1:63:A:ASP:CA	1:63:A:ASP:C	1:64:A:SER:N	13	1.97
(1,104)	1:63:A:ASP:N	1:63:A:ASP:CA	1:63:A:ASP:C	1:64:A:SER:N	17	1.97
(1,84)	1:50:A:LYS:N	1:50:A:LYS:CA	1:50:A:LYS:C	1:51:A:ASN:N	16	1.97
(1,68)	1:41:A:SER:N	1:41:A:SER:CA	1:41:A:SER:C	1:42:A:ASN:N	3	1.97
(1,78)	1:47:A:SER:N	1:47:A:SER:CA	1:47:A:SER:C	1:48:A:VAL:N	13	1.96
(1,70)	1:42:A:ASN:N	1:42:A:ASN:CA	1:42:A:ASN:C	1:43:A:PRO:N	8	1.96
(1,155)	1:93:A:ASN:C	1:94:A:SER:N	1:94:A:SER:CA	1:94:A:SER:C	13	1.95
(1,116)	1:70:A:LEU:N	1:70:A:LEU:CA	1:70:A:LEU:C	1:71:A:GLN:N	2	1.95
(1,9)	1:8:A:LYS:C	1:9:A:ASP:N	1:9:A:ASP:CA	1:9:A:ASP:C	2	1.94
(1,8)	1:8:A:LYS:N	1:8:A:LYS:CA	1:8:A:LYS:C	1:9:A:ASP:N	1	1.94
(1,78)	1:47:A:SER:N	1:47:A:SER:CA	1:47:A:SER:C	1:48:A:VAL:N	20	1.93
(1,138)	1:83:A:ARG:N	1:83:A:ARG:CA	1:83:A:ARG:C	1:84:A:ILE:N	12	1.92
(1,5)	1:6:A:GLN:C	1:7:A:TYR:N	1:7:A:TYR:CA	1:7:A:TYR:C	10	1.92
(1,147)	1:87:A:LYS:C	1:88:A:TYR:N	1:88:A:TYR:CA	1:88:A:TYR:C	20	1.91
(1,141)	1:84:A:ILE:C	1:85:A:SER:N	1:85:A:SER:CA	1:85:A:SER:C	2	1.91
(1,139)	1:83:A:ARG:C	1:84:A:ILE:N	1:84:A:ILE:CA	1:84:A:ILE:C	13	1.91
(1,10)	1:9:A:ASP:N	1:9:A:ASP:CA	1:9:A:ASP:C	1:10:A:GLY:N	5	1.91
(1,5)	1:6:A:GLN:C	1:7:A:TYR:N	1:7:A:TYR:CA	1:7:A:TYR:C	4	1.91
(1,176)	1:104:A:ILE:N	1:104:A:ILE:CA	1:104:A:ILE:C	1:105:A:GLU:N	11	1.9
(1,107)	1:64:A:SER:C	1:65:A:ASP:N	1:65:A:ASP:CA	1:65:A:ASP:C	19	1.9
(1,10)	1:9:A:ASP:N	1:9:A:ASP:CA	1:9:A:ASP:C	1:10:A:GLY:N	15	1.9
(1,192)	1:112:A:ASN:N	1:112:A:ASN:CA	1:112:A:ASN:C	1:113:A:THR:N	10	1.89
(1,148)	1:88:A:TYR:N	1:88:A:TYR:CA	1:88:A:TYR:C	1:89:A:GLY:N	19	1.89
(1,138)	1:83:A:ARG:N	1:83:A:ARG:CA	1:83:A:ARG:C	1:84:A:ILE:N	9	1.89
(1,124)	1:74:A:MET:N	1:74:A:MET:CA	1:74:A:MET:C	1:75:A:LYS:N	14	1.89
(1,120)	1:72:A:VAL:N	1:72:A:VAL:CA	1:72:A:VAL:C	1:73:A:ALA:N	17	1.89
(1,113)	1:68:A:ASP:C	1:69:A:SER:N	1:69:A:SER:CA	1:69:A:SER:C	20	1.89
(1,49)	1:30:A:ALA:C	1:31:A:ILE:N	1:31:A:ILE:CA	1:31:A:ILE:C	1	1.89
(1,116)	1:70:A:LEU:N	1:70:A:LEU:CA	1:70:A:LEU:C	1:71:A:GLN:N	20	1.87
(1,109)	1:65:A:ASP:C	1:66:A:SER:N	1:66:A:SER:CA	1:66:A:SER:C	13	1.87
(1,151)	1:90:A:SER:C	1:91:A:GLN:N	1:91:A:GLN:CA	1:91:A:GLN:C	19	1.86
(1,124)	1:74:A:MET:N	1:74:A:MET:CA	1:74:A:MET:C	1:75:A:LYS:N	20	1.86
(1,98)	1:60:A:SER:N	1:60:A:SER:CA	1:60:A:SER:C	1:61:A:ALA:N	5	1.86

Continued on next page...

Continued from previous page...

Key	Atom-1	Atom-2	Atom-3	Atom-4	Model ID	Violation (°)
(1,59)	1:36:A:THR:C	1:37:A:PHE:N	1:37:A:PHE:CA	1:37:A:PHE:C	15	1.86
(1,125)	1:74:A:MET:C	1:75:A:LYS:N	1:75:A:LYS:CA	1:75:A:LYS:C	2	1.85
(1,106)	1:64:A:SER:N	1:64:A:SER:CA	1:64:A:SER:C	1:65:A:ASP:N	16	1.85
(1,181)	1:106:A:GLY:C	1:107:A:ASN:N	1:107:A:ASN:CA	1:107:A:ASN:C	8	1.84
(1,128)	1:76:A:LYS:N	1:76:A:LYS:CA	1:76:A:LYS:C	1:77:A:LEU:N	11	1.84
(1,115)	1:69:A:SER:C	1:70:A:LEU:N	1:70:A:LEU:CA	1:70:A:LEU:C	10	1.84
(1,79)	1:47:A:SER:C	1:48:A:VAL:N	1:48:A:VAL:CA	1:48:A:VAL:C	5	1.84
(1,69)	1:41:A:SER:C	1:42:A:ASN:N	1:42:A:ASN:CA	1:42:A:ASN:C	17	1.84
(1,128)	1:76:A:LYS:N	1:76:A:LYS:CA	1:76:A:LYS:C	1:77:A:LEU:N	9	1.83
(1,107)	1:64:A:SER:C	1:65:A:ASP:N	1:65:A:ASP:CA	1:65:A:ASP:C	2	1.83
(1,1)	1:4:A:GLY:C	1:5:A:THR:N	1:5:A:THR:CA	1:5:A:THR:C	10	1.83
(1,154)	1:93:A:ASN:N	1:93:A:ASN:CA	1:93:A:ASN:C	1:94:A:SER:N	18	1.82
(1,146)	1:87:A:LYS:N	1:87:A:LYS:CA	1:87:A:LYS:C	1:88:A:TYR:N	11	1.82
(1,120)	1:72:A:VAL:N	1:72:A:VAL:CA	1:72:A:VAL:C	1:73:A:ALA:N	10	1.82
(1,112)	1:67:A:THR:N	1:67:A:THR:CA	1:67:A:THR:C	1:68:A:ASP:N	8	1.82
(1,4)	1:6:A:GLN:N	1:6:A:GLN:CA	1:6:A:GLN:C	1:7:A:TYR:N	6	1.82
(1,78)	1:47:A:SER:N	1:47:A:SER:CA	1:47:A:SER:C	1:48:A:VAL:N	9	1.81
(1,8)	1:8:A:LYS:N	1:8:A:LYS:CA	1:8:A:LYS:C	1:9:A:ASP:N	10	1.8
(1,176)	1:104:A:ILE:N	1:104:A:ILE:CA	1:104:A:ILE:C	1:105:A:GLU:N	18	1.79
(1,130)	1:77:A:LEU:N	1:77:A:LEU:CA	1:77:A:LEU:C	1:78:A:PRO:N	16	1.79
(1,49)	1:30:A:ALA:C	1:31:A:ILE:N	1:31:A:ILE:CA	1:31:A:ILE:C	8	1.79
(1,113)	1:68:A:ASP:C	1:69:A:SER:N	1:69:A:SER:CA	1:69:A:SER:C	11	1.78
(1,108)	1:65:A:ASP:N	1:65:A:ASP:CA	1:65:A:ASP:C	1:66:A:SER:N	16	1.78
(1,5)	1:6:A:GLN:C	1:7:A:TYR:N	1:7:A:TYR:CA	1:7:A:TYR:C	18	1.78
(1,177)	1:104:A:ILE:C	1:105:A:GLU:N	1:105:A:GLU:CA	1:105:A:GLU:C	7	1.77
(1,139)	1:83:A:ARG:C	1:84:A:ILE:N	1:84:A:ILE:CA	1:84:A:ILE:C	11	1.77
(1,50)	1:31:A:ILE:N	1:31:A:ILE:CA	1:31:A:ILE:C	1:32:A:GLN:N	8	1.77
(1,104)	1:63:A:ASP:N	1:63:A:ASP:CA	1:63:A:ASP:C	1:64:A:SER:N	11	1.76
(1,89)	1:55:A:ASP:C	1:56:A:ALA:N	1:56:A:ALA:CA	1:56:A:ALA:C	19	1.76
(1,179)	1:105:A:GLU:C	1:106:A:GLY:N	1:106:A:GLY:CA	1:106:A:GLY:C	15	1.75
(1,169)	1:100:A:LEU:C	1:101:A:ILE:N	1:101:A:ILE:CA	1:101:A:ILE:C	15	1.75
(1,63)	1:38:A:ASP:C	1:39:A:TYR:N	1:39:A:TYR:CA	1:39:A:TYR:C	5	1.75
(1,151)	1:90:A:SER:C	1:91:A:GLN:N	1:91:A:GLN:CA	1:91:A:GLN:C	4	1.74
(1,147)	1:87:A:LYS:C	1:88:A:TYR:N	1:88:A:TYR:CA	1:88:A:TYR:C	11	1.74
(1,115)	1:69:A:SER:C	1:70:A:LEU:N	1:70:A:LEU:CA	1:70:A:LEU:C	14	1.74
(1,112)	1:67:A:THR:N	1:67:A:THR:CA	1:67:A:THR:C	1:68:A:ASP:N	10	1.74
(1,32)	1:22:A:THR:N	1:22:A:THR:CA	1:22:A:THR:C	1:23:A:VAL:N	20	1.74
(1,78)	1:47:A:SER:N	1:47:A:SER:CA	1:47:A:SER:C	1:48:A:VAL:N	12	1.73
(1,71)	1:43:A:PRO:C	1:44:A:TYR:N	1:44:A:TYR:CA	1:44:A:TYR:C	3	1.73
(1,70)	1:42:A:ASN:N	1:42:A:ASN:CA	1:42:A:ASN:C	1:43:A:PRO:N	19	1.73
(1,5)	1:6:A:GLN:C	1:7:A:TYR:N	1:7:A:TYR:CA	1:7:A:TYR:C	3	1.73
(1,79)	1:47:A:SER:C	1:48:A:VAL:N	1:48:A:VAL:CA	1:48:A:VAL:C	18	1.72
(1,188)	1:110:A:TYR:N	1:110:A:TYR:CA	1:110:A:TYR:C	1:111:A:ALA:N	20	1.71
(1,116)	1:70:A:LEU:N	1:70:A:LEU:CA	1:70:A:LEU:C	1:71:A:GLN:N	3	1.71
(1,62)	1:38:A:ASP:N	1:38:A:ASP:CA	1:38:A:ASP:C	1:39:A:TYR:N	15	1.71
(1,29)	1:20:A:PHE:C	1:21:A:ASN:N	1:21:A:ASN:CA	1:21:A:ASN:C	9	1.71
(1,169)	1:100:A:LEU:C	1:101:A:ILE:N	1:101:A:ILE:CA	1:101:A:ILE:C	12	1.7
(1,149)	1:89:A:GLY:C	1:90:A:SER:N	1:90:A:SER:CA	1:90:A:SER:C	4	1.7
(1,70)	1:42:A:ASN:N	1:42:A:ASN:CA	1:42:A:ASN:C	1:43:A:PRO:N	12	1.7
(1,63)	1:38:A:ASP:C	1:39:A:TYR:N	1:39:A:TYR:CA	1:39:A:TYR:C	2	1.7
(1,141)	1:84:A:ILE:C	1:85:A:SER:N	1:85:A:SER:CA	1:85:A:SER:C	15	1.69

Continued on next page...

Continued from previous page...

Key	Atom-1	Atom-2	Atom-3	Atom-4	Model ID	Violation (°)
(1,114)	1:69:A:SER:N	1:69:A:SER:CA	1:69:A:SER:C	1:70:A:LEU:N	19	1.69
(1,50)	1:31:A:ILE:N	1:31:A:ILE:CA	1:31:A:ILE:C	1:32:A:GLN:N	15	1.69
(1,5)	1:6:A:GLN:C	1:7:A:TYR:N	1:7:A:TYR:CA	1:7:A:TYR:C	9	1.69
(1,74)	1:45:A:ASP:N	1:45:A:ASP:CA	1:45:A:ASP:C	1:46:A:ILE:N	20	1.68
(1,51)	1:31:A:ILE:C	1:32:A:GLN:N	1:32:A:GLN:CA	1:32:A:GLN:C	17	1.68
(1,48)	1:30:A:ALA:N	1:30:A:ALA:CA	1:30:A:ALA:C	1:31:A:ILE:N	8	1.68
(1,32)	1:22:A:THR:N	1:22:A:THR:CA	1:22:A:THR:C	1:23:A:VAL:N	2	1.68
(1,31)	1:21:A:ASN:C	1:22:A:THR:N	1:22:A:THR:CA	1:22:A:THR:C	1	1.68
(1,26)	1:19:A:ASN:N	1:19:A:ASN:CA	1:19:A:ASN:C	1:20:A:PHE:N	16	1.68
(1,154)	1:93:A:ASN:N	1:93:A:ASN:CA	1:93:A:ASN:C	1:94:A:SER:N	7	1.67
(1,125)	1:74:A:MET:C	1:75:A:LYS:N	1:75:A:LYS:CA	1:75:A:LYS:C	19	1.67
(1,115)	1:69:A:SER:C	1:70:A:LEU:N	1:70:A:LEU:CA	1:70:A:LEU:C	4	1.67
(1,32)	1:22:A:THR:N	1:22:A:THR:CA	1:22:A:THR:C	1:23:A:VAL:N	8	1.67
(1,176)	1:104:A:ILE:N	1:104:A:ILE:CA	1:104:A:ILE:C	1:105:A:GLU:N	3	1.66
(1,155)	1:93:A:ASN:C	1:94:A:SER:N	1:94:A:SER:CA	1:94:A:SER:C	12	1.66
(1,141)	1:84:A:ILE:C	1:85:A:SER:N	1:85:A:SER:CA	1:85:A:SER:C	13	1.66
(1,120)	1:72:A:VAL:N	1:72:A:VAL:CA	1:72:A:VAL:C	1:73:A:ALA:N	14	1.66
(1,108)	1:65:A:ASP:N	1:65:A:ASP:CA	1:65:A:ASP:C	1:66:A:SER:N	17	1.66
(1,104)	1:63:A:ASP:N	1:63:A:ASP:CA	1:63:A:ASP:C	1:64:A:SER:N	15	1.66
(1,130)	1:77:A:LEU:N	1:77:A:LEU:CA	1:77:A:LEU:C	1:78:A:PRO:N	14	1.65
(1,78)	1:47:A:SER:N	1:47:A:SER:CA	1:47:A:SER:C	1:48:A:VAL:N	4	1.65
(1,31)	1:21:A:ASN:C	1:22:A:THR:N	1:22:A:THR:CA	1:22:A:THR:C	19	1.65
(1,127)	1:75:A:LYS:C	1:76:A:LYS:N	1:76:A:LYS:CA	1:76:A:LYS:C	17	1.64
(1,120)	1:72:A:VAL:N	1:72:A:VAL:CA	1:72:A:VAL:C	1:73:A:ALA:N	4	1.64
(1,5)	1:6:A:GLN:C	1:7:A:TYR:N	1:7:A:TYR:CA	1:7:A:TYR:C	1	1.64
(1,177)	1:104:A:ILE:C	1:105:A:GLU:N	1:105:A:GLU:CA	1:105:A:GLU:C	6	1.63
(1,49)	1:30:A:ALA:C	1:31:A:ILE:N	1:31:A:ILE:CA	1:31:A:ILE:C	19	1.63
(1,72)	1:44:A:TYR:N	1:44:A:TYR:CA	1:44:A:TYR:C	1:45:A:ASP:N	2	1.62
(1,62)	1:38:A:ASP:N	1:38:A:ASP:CA	1:38:A:ASP:C	1:39:A:TYR:N	14	1.62
(1,181)	1:106:A:GLY:C	1:107:A:ASN:N	1:107:A:ASN:CA	1:107:A:ASN:C	17	1.61
(1,98)	1:60:A:SER:N	1:60:A:SER:CA	1:60:A:SER:C	1:61:A:ALA:N	10	1.61
(1,10)	1:9:A:ASP:N	1:9:A:ASP:CA	1:9:A:ASP:C	1:10:A:GLY:N	19	1.61
(1,176)	1:104:A:ILE:N	1:104:A:ILE:CA	1:104:A:ILE:C	1:105:A:GLU:N	12	1.6
(1,176)	1:104:A:ILE:N	1:104:A:ILE:CA	1:104:A:ILE:C	1:105:A:GLU:N	19	1.6
(1,120)	1:72:A:VAL:N	1:72:A:VAL:CA	1:72:A:VAL:C	1:73:A:ALA:N	1	1.6
(1,120)	1:72:A:VAL:N	1:72:A:VAL:CA	1:72:A:VAL:C	1:73:A:ALA:N	11	1.6
(1,63)	1:38:A:ASP:C	1:39:A:TYR:N	1:39:A:TYR:CA	1:39:A:TYR:C	15	1.6
(1,189)	1:110:A:TYR:C	1:111:A:ALA:N	1:111:A:ALA:CA	1:111:A:ALA:C	7	1.59
(1,169)	1:100:A:LEU:C	1:101:A:ILE:N	1:101:A:ILE:CA	1:101:A:ILE:C	4	1.59
(1,128)	1:76:A:LYS:N	1:76:A:LYS:CA	1:76:A:LYS:C	1:77:A:LEU:N	18	1.59
(1,78)	1:47:A:SER:N	1:47:A:SER:CA	1:47:A:SER:C	1:48:A:VAL:N	17	1.59
(1,74)	1:45:A:ASP:N	1:45:A:ASP:CA	1:45:A:ASP:C	1:46:A:ILE:N	4	1.59
(1,49)	1:30:A:ALA:C	1:31:A:ILE:N	1:31:A:ILE:CA	1:31:A:ILE:C	17	1.59
(1,185)	1:108:A:ILE:C	1:109:A:ARG:N	1:109:A:ARG:CA	1:109:A:ARG:C	15	1.58
(1,146)	1:87:A:LYS:N	1:87:A:LYS:CA	1:87:A:LYS:C	1:88:A:TYR:N	6	1.58
(1,128)	1:76:A:LYS:N	1:76:A:LYS:CA	1:76:A:LYS:C	1:77:A:LEU:N	14	1.58
(1,10)	1:9:A:ASP:N	1:9:A:ASP:CA	1:9:A:ASP:C	1:10:A:GLY:N	4	1.58
(1,189)	1:110:A:TYR:C	1:111:A:ALA:N	1:111:A:ALA:CA	1:111:A:ALA:C	1	1.57
(1,138)	1:83:A:ARG:N	1:83:A:ARG:CA	1:83:A:ARG:C	1:84:A:ILE:N	5	1.56
(1,78)	1:47:A:SER:N	1:47:A:SER:CA	1:47:A:SER:C	1:48:A:VAL:N	10	1.56
(1,176)	1:104:A:ILE:N	1:104:A:ILE:CA	1:104:A:ILE:C	1:105:A:GLU:N	20	1.55

Continued on next page...

Continued from previous page...

Key	Atom-1	Atom-2	Atom-3	Atom-4	Model ID	Violation (°)
(1,78)	1:47:A:SER:N	1:47:A:SER:CA	1:47:A:SER:C	1:48:A:VAL:N	19	1.55
(1,4)	1:6:A:GLN:N	1:6:A:GLN:CA	1:6:A:GLN:C	1:7:A:TYR:N	19	1.55
(1,156)	1:94:A:SER:N	1:94:A:SER:CA	1:94:A:SER:C	1:95:A:ILE:N	7	1.54
(1,138)	1:83:A:ARG:N	1:83:A:ARG:CA	1:83:A:ARG:C	1:84:A:ILE:N	19	1.54
(1,134)	1:81:A:ALA:N	1:81:A:ALA:CA	1:81:A:ALA:C	1:82:A:THR:N	20	1.54
(1,127)	1:75:A:LYS:C	1:76:A:LYS:N	1:76:A:LYS:CA	1:76:A:LYS:C	19	1.54
(1,89)	1:55:A:ASP:C	1:56:A:ALA:N	1:56:A:ALA:CA	1:56:A:ALA:C	3	1.54
(1,77)	1:46:A:ILE:C	1:47:A:SER:N	1:47:A:SER:CA	1:47:A:SER:C	16	1.54
(1,147)	1:87:A:LYS:C	1:88:A:TYR:N	1:88:A:TYR:CA	1:88:A:TYR:C	7	1.53
(1,147)	1:87:A:LYS:C	1:88:A:TYR:N	1:88:A:TYR:CA	1:88:A:TYR:C	9	1.53
(1,146)	1:87:A:LYS:N	1:87:A:LYS:CA	1:87:A:LYS:C	1:88:A:TYR:N	18	1.53
(1,104)	1:63:A:ASP:N	1:63:A:ASP:CA	1:63:A:ASP:C	1:64:A:SER:N	4	1.53
(1,104)	1:63:A:ASP:N	1:63:A:ASP:CA	1:63:A:ASP:C	1:64:A:SER:N	18	1.53
(1,4)	1:6:A:GLN:N	1:6:A:GLN:CA	1:6:A:GLN:C	1:7:A:TYR:N	9	1.53
(1,169)	1:100:A:LEU:C	1:101:A:ILE:N	1:101:A:ILE:CA	1:101:A:ILE:C	10	1.52
(1,139)	1:83:A:ARG:C	1:84:A:ILE:N	1:84:A:ILE:CA	1:84:A:ILE:C	2	1.52
(1,120)	1:72:A:VAL:N	1:72:A:VAL:CA	1:72:A:VAL:C	1:73:A:ALA:N	9	1.52
(1,51)	1:31:A:ILE:C	1:32:A:GLN:N	1:32:A:GLN:CA	1:32:A:GLN:C	15	1.52
(1,10)	1:9:A:ASP:N	1:9:A:ASP:CA	1:9:A:ASP:C	1:10:A:GLY:N	12	1.52
(1,146)	1:87:A:LYS:N	1:87:A:LYS:CA	1:87:A:LYS:C	1:88:A:TYR:N	2	1.51
(1,146)	1:87:A:LYS:N	1:87:A:LYS:CA	1:87:A:LYS:C	1:88:A:TYR:N	16	1.51
(1,62)	1:38:A:ASP:N	1:38:A:ASP:CA	1:38:A:ASP:C	1:39:A:TYR:N	5	1.51
(1,36)	1:24:A:TYR:N	1:24:A:TYR:CA	1:24:A:TYR:C	1:25:A:ASN:N	15	1.51
(1,141)	1:84:A:ILE:C	1:85:A:SER:N	1:85:A:SER:CA	1:85:A:SER:C	7	1.5
(1,112)	1:67:A:THR:N	1:67:A:THR:CA	1:67:A:THR:C	1:68:A:ASP:N	15	1.5
(1,4)	1:6:A:GLN:N	1:6:A:GLN:CA	1:6:A:GLN:C	1:7:A:TYR:N	15	1.5
(1,148)	1:88:A:TYR:N	1:88:A:TYR:CA	1:88:A:TYR:C	1:89:A:GLY:N	3	1.49
(1,144)	1:86:A:ILE:N	1:86:A:ILE:CA	1:86:A:ILE:C	1:87:A:LYS:N	5	1.49
(1,120)	1:72:A:VAL:N	1:72:A:VAL:CA	1:72:A:VAL:C	1:73:A:ALA:N	15	1.49
(1,79)	1:47:A:SER:C	1:48:A:VAL:N	1:48:A:VAL:CA	1:48:A:VAL:C	2	1.49
(1,78)	1:47:A:SER:N	1:47:A:SER:CA	1:47:A:SER:C	1:48:A:VAL:N	6	1.49
(1,70)	1:42:A:ASN:N	1:42:A:ASN:CA	1:42:A:ASN:C	1:43:A:PRO:N	15	1.49
(1,65)	1:39:A:TYR:C	1:40:A:LYS:N	1:40:A:LYS:CA	1:40:A:LYS:C	13	1.49
(1,13)	1:11:A:TYR:C	1:12:A:TYR:N	1:12:A:TYR:CA	1:12:A:TYR:C	11	1.49
(1,5)	1:6:A:GLN:C	1:7:A:TYR:N	1:7:A:TYR:CA	1:7:A:TYR:C	14	1.49
(1,137)	1:82:A:THR:C	1:83:A:ARG:N	1:83:A:ARG:CA	1:83:A:ARG:C	16	1.48
(1,111)	1:66:A:SER:C	1:67:A:THR:N	1:67:A:THR:CA	1:67:A:THR:C	5	1.48
(1,99)	1:60:A:SER:C	1:61:A:ALA:N	1:61:A:ALA:CA	1:61:A:ALA:C	1	1.48
(1,89)	1:55:A:ASP:C	1:56:A:ALA:N	1:56:A:ALA:CA	1:56:A:ALA:C	5	1.48
(1,5)	1:6:A:GLN:C	1:7:A:TYR:N	1:7:A:TYR:CA	1:7:A:TYR:C	12	1.48
(1,69)	1:41:A:SER:C	1:42:A:ASN:N	1:42:A:ASN:CA	1:42:A:ASN:C	2	1.47
(1,169)	1:100:A:LEU:C	1:101:A:ILE:N	1:101:A:ILE:CA	1:101:A:ILE:C	18	1.46
(1,151)	1:90:A:SER:C	1:91:A:GLN:N	1:91:A:GLN:CA	1:91:A:GLN:C	14	1.46
(1,150)	1:90:A:SER:N	1:90:A:SER:CA	1:90:A:SER:C	1:91:A:GLN:N	7	1.46
(1,77)	1:46:A:ILE:C	1:47:A:SER:N	1:47:A:SER:CA	1:47:A:SER:C	15	1.45
(1,77)	1:46:A:ILE:C	1:47:A:SER:N	1:47:A:SER:CA	1:47:A:SER:C	19	1.45
(1,188)	1:110:A:TYR:N	1:110:A:TYR:CA	1:110:A:TYR:C	1:111:A:ALA:N	15	1.44
(1,120)	1:72:A:VAL:N	1:72:A:VAL:CA	1:72:A:VAL:C	1:73:A:ALA:N	20	1.44
(1,71)	1:43:A:PRO:C	1:44:A:TYR:N	1:44:A:TYR:CA	1:44:A:TYR:C	14	1.43
(1,69)	1:41:A:SER:C	1:42:A:ASN:N	1:42:A:ASN:CA	1:42:A:ASN:C	3	1.43
(1,58)	1:36:A:THR:N	1:36:A:THR:CA	1:36:A:THR:C	1:37:A:PHE:N	8	1.43

Continued on next page...

Continued from previous page...

Key	Atom-1	Atom-2	Atom-3	Atom-4	Model ID	Violation (°)
(1,48)	1:30:A:ALA:N	1:30:A:ALA:CA	1:30:A:ALA:C	1:31:A:ILE:N	1	1.43
(1,158)	1:95:A:ILE:N	1:95:A:ILE:CA	1:95:A:ILE:C	1:96:A:ARG:N	19	1.42
(1,141)	1:84:A:ILE:C	1:85:A:SER:N	1:85:A:SER:CA	1:85:A:SER:C	6	1.42
(1,150)	1:90:A:SER:N	1:90:A:SER:CA	1:90:A:SER:C	1:91:A:GLN:N	14	1.41
(1,147)	1:87:A:LYS:C	1:88:A:TYR:N	1:88:A:TYR:CA	1:88:A:TYR:C	12	1.41
(1,107)	1:64:A:SER:C	1:65:A:ASP:N	1:65:A:ASP:CA	1:65:A:ASP:C	3	1.41
(1,89)	1:55:A:ASP:C	1:56:A:ALA:N	1:56:A:ALA:CA	1:56:A:ALA:C	15	1.41
(1,191)	1:111:A:ALA:C	1:112:A:ASN:N	1:112:A:ASN:CA	1:112:A:ASN:C	9	1.4
(1,137)	1:82:A:THR:C	1:83:A:ARG:N	1:83:A:ARG:CA	1:83:A:ARG:C	6	1.4
(1,118)	1:71:A:GLN:N	1:71:A:GLN:CA	1:71:A:GLN:C	1:72:A:VAL:N	12	1.4
(1,82)	1:49:A:ASN:N	1:49:A:ASN:CA	1:49:A:ASN:C	1:50:A:LYS:N	14	1.4
(1,70)	1:42:A:ASN:N	1:42:A:ASN:CA	1:42:A:ASN:C	1:43:A:PRO:N	4	1.4
(1,48)	1:30:A:ALA:N	1:30:A:ALA:CA	1:30:A:ALA:C	1:31:A:ILE:N	17	1.4
(1,137)	1:82:A:THR:C	1:83:A:ARG:N	1:83:A:ARG:CA	1:83:A:ARG:C	19	1.39
(1,134)	1:81:A:ALA:N	1:81:A:ALA:CA	1:81:A:ALA:C	1:82:A:THR:N	7	1.39
(1,127)	1:75:A:LYS:C	1:76:A:LYS:N	1:76:A:LYS:CA	1:76:A:LYS:C	2	1.39
(1,127)	1:75:A:LYS:C	1:76:A:LYS:N	1:76:A:LYS:CA	1:76:A:LYS:C	11	1.39
(1,123)	1:73:A:ALA:C	1:74:A:MET:N	1:74:A:MET:CA	1:74:A:MET:C	14	1.39
(1,5)	1:6:A:GLN:C	1:7:A:TYR:N	1:7:A:TYR:CA	1:7:A:TYR:C	8	1.39
(1,154)	1:93:A:ASN:N	1:93:A:ASN:CA	1:93:A:ASN:C	1:94:A:SER:N	1	1.38
(1,152)	1:91:A:GLN:N	1:91:A:GLN:CA	1:91:A:GLN:C	1:92:A:GLY:N	6	1.38
(1,137)	1:82:A:THR:C	1:83:A:ARG:N	1:83:A:ARG:CA	1:83:A:ARG:C	15	1.38
(1,66)	1:40:A:LYS:N	1:40:A:LYS:CA	1:40:A:LYS:C	1:41:A:SER:N	13	1.38
(1,36)	1:24:A:TYR:N	1:24:A:TYR:CA	1:24:A:TYR:C	1:25:A:ASN:N	10	1.38
(1,154)	1:93:A:ASN:N	1:93:A:ASN:CA	1:93:A:ASN:C	1:94:A:SER:N	6	1.37
(1,146)	1:87:A:LYS:N	1:87:A:LYS:CA	1:87:A:LYS:C	1:88:A:TYR:N	4	1.37
(1,120)	1:72:A:VAL:N	1:72:A:VAL:CA	1:72:A:VAL:C	1:73:A:ALA:N	5	1.37
(1,108)	1:65:A:ASP:N	1:65:A:ASP:CA	1:65:A:ASP:C	1:66:A:SER:N	15	1.37
(1,59)	1:36:A:THR:C	1:37:A:PHE:N	1:37:A:PHE:CA	1:37:A:PHE:C	19	1.37
(1,4)	1:6:A:GLN:N	1:6:A:GLN:CA	1:6:A:GLN:C	1:7:A:TYR:N	8	1.37
(1,128)	1:76:A:LYS:N	1:76:A:LYS:CA	1:76:A:LYS:C	1:77:A:LEU:N	6	1.36
(1,120)	1:72:A:VAL:N	1:72:A:VAL:CA	1:72:A:VAL:C	1:73:A:ALA:N	12	1.36
(1,66)	1:40:A:LYS:N	1:40:A:LYS:CA	1:40:A:LYS:C	1:41:A:SER:N	19	1.36
(1,64)	1:39:A:TYR:N	1:39:A:TYR:CA	1:39:A:TYR:C	1:40:A:LYS:N	13	1.36
(1,155)	1:93:A:ASN:C	1:94:A:SER:N	1:94:A:SER:CA	1:94:A:SER:C	8	1.35
(1,138)	1:83:A:ARG:N	1:83:A:ARG:CA	1:83:A:ARG:C	1:84:A:ILE:N	15	1.35
(1,118)	1:71:A:GLN:N	1:71:A:GLN:CA	1:71:A:GLN:C	1:72:A:VAL:N	2	1.35
(1,75)	1:45:A:ASP:C	1:46:A:ILE:N	1:46:A:ILE:CA	1:46:A:ILE:C	7	1.35
(1,147)	1:87:A:LYS:C	1:88:A:TYR:N	1:88:A:TYR:CA	1:88:A:TYR:C	16	1.34
(1,139)	1:83:A:ARG:C	1:84:A:ILE:N	1:84:A:ILE:CA	1:84:A:ILE:C	6	1.34
(1,50)	1:31:A:ILE:N	1:31:A:ILE:CA	1:31:A:ILE:C	1:32:A:GLN:N	19	1.34
(1,44)	1:28:A:LEU:N	1:28:A:LEU:CA	1:28:A:LEU:C	1:29:A:GLN:N	14	1.34
(1,189)	1:110:A:TYR:C	1:111:A:ALA:N	1:111:A:ALA:CA	1:111:A:ALA:C	18	1.33
(1,113)	1:68:A:ASP:C	1:69:A:SER:N	1:69:A:SER:CA	1:69:A:SER:C	14	1.33
(1,112)	1:67:A:THR:N	1:67:A:THR:CA	1:67:A:THR:C	1:68:A:ASP:N	1	1.33
(1,66)	1:40:A:LYS:N	1:40:A:LYS:CA	1:40:A:LYS:C	1:41:A:SER:N	18	1.33
(1,59)	1:36:A:THR:C	1:37:A:PHE:N	1:37:A:PHE:CA	1:37:A:PHE:C	18	1.33
(1,9)	1:8:A:LYS:C	1:9:A:ASP:N	1:9:A:ASP:CA	1:9:A:ASP:C	18	1.33
(1,191)	1:111:A:ALA:C	1:112:A:ASN:N	1:112:A:ASN:CA	1:112:A:ASN:C	1	1.32
(1,151)	1:90:A:SER:C	1:91:A:GLN:N	1:91:A:GLN:CA	1:91:A:GLN:C	13	1.32
(1,136)	1:82:A:THR:N	1:82:A:THR:CA	1:82:A:THR:C	1:83:A:ARG:N	13	1.32

Continued on next page...

Continued from previous page...

Key	Atom-1	Atom-2	Atom-3	Atom-4	Model ID	Violation (°)
(1,120)	1:72:A:VAL:N	1:72:A:VAL:CA	1:72:A:VAL:C	1:73:A:ALA:N	7	1.32
(1,82)	1:49:A:ASN:N	1:49:A:ASN:CA	1:49:A:ASN:C	1:50:A:LYS:N	9	1.32
(1,32)	1:22:A:THR:N	1:22:A:THR:CA	1:22:A:THR:C	1:23:A:VAL:N	18	1.32
(1,10)	1:9:A:ASP:N	1:9:A:ASP:CA	1:9:A:ASP:C	1:10:A:GLY:N	17	1.32
(1,188)	1:110:A:TYR:N	1:110:A:TYR:CA	1:110:A:TYR:C	1:111:A:ALA:N	5	1.31
(1,184)	1:108:A:ILE:N	1:108:A:ILE:CA	1:108:A:ILE:C	1:109:A:ARG:N	15	1.31
(1,151)	1:90:A:SER:C	1:91:A:GLN:N	1:91:A:GLN:CA	1:91:A:GLN:C	7	1.31
(1,132)	1:80:A:ASN:N	1:80:A:ASN:CA	1:80:A:ASN:C	1:81:A:ALA:N	2	1.31
(1,115)	1:69:A:SER:C	1:70:A:LEU:N	1:70:A:LEU:CA	1:70:A:LEU:C	5	1.31
(1,106)	1:64:A:SER:N	1:64:A:SER:CA	1:64:A:SER:C	1:65:A:ASP:N	11	1.31
(1,94)	1:58:A:ILE:N	1:58:A:ILE:CA	1:58:A:ILE:C	1:59:A:VAL:N	10	1.31
(1,90)	1:56:A:ALA:N	1:56:A:ALA:CA	1:56:A:ALA:C	1:57:A:GLU:N	5	1.31
(1,78)	1:47:A:SER:N	1:47:A:SER:CA	1:47:A:SER:C	1:48:A:VAL:N	7	1.31
(1,4)	1:6:A:GLN:N	1:6:A:GLN:CA	1:6:A:GLN:C	1:7:A:TYR:N	2	1.31
(1,31)	1:21:A:ASN:C	1:22:A:THR:N	1:22:A:THR:CA	1:22:A:THR:C	12	1.3
(1,16)	1:13:A:ILE:N	1:13:A:ILE:CA	1:13:A:ILE:C	1:14:A:THR:N	18	1.3
(1,180)	1:106:A:GLY:N	1:106:A:GLY:CA	1:106:A:GLY:C	1:107:A:ASN:N	17	1.29
(1,155)	1:93:A:ASN:C	1:94:A:SER:N	1:94:A:SER:CA	1:94:A:SER:C	10	1.29
(1,147)	1:87:A:LYS:C	1:88:A:TYR:N	1:88:A:TYR:CA	1:88:A:TYR:C	10	1.29
(1,26)	1:19:A:ASN:N	1:19:A:ASN:CA	1:19:A:ASN:C	1:20:A:PHE:N	8	1.29
(1,5)	1:6:A:GLN:C	1:7:A:TYR:N	1:7:A:TYR:CA	1:7:A:TYR:C	16	1.29
(1,169)	1:100:A:LEU:C	1:101:A:ILE:N	1:101:A:ILE:CA	1:101:A:ILE:C	11	1.28
(1,8)	1:8:A:LYS:N	1:8:A:LYS:CA	1:8:A:LYS:C	1:9:A:ASP:N	2	1.28
(1,190)	1:111:A:ALA:N	1:111:A:ALA:CA	1:111:A:ALA:C	1:112:A:ASN:N	3	1.27
(1,30)	1:21:A:ASN:N	1:21:A:ASN:CA	1:21:A:ASN:C	1:22:A:THR:N	1	1.27
(1,187)	1:109:A:ARG:C	1:110:A:TYR:N	1:110:A:TYR:CA	1:110:A:TYR:C	19	1.26
(1,141)	1:84:A:ILE:C	1:85:A:SER:N	1:85:A:SER:CA	1:85:A:SER:C	3	1.26
(1,129)	1:76:A:LYS:C	1:77:A:LEU:N	1:77:A:LEU:CA	1:77:A:LEU:C	19	1.26
(1,128)	1:76:A:LYS:N	1:76:A:LYS:CA	1:76:A:LYS:C	1:77:A:LEU:N	15	1.26
(1,114)	1:69:A:SER:N	1:69:A:SER:CA	1:69:A:SER:C	1:70:A:LEU:N	8	1.26
(1,108)	1:65:A:ASP:N	1:65:A:ASP:CA	1:65:A:ASP:C	1:66:A:SER:N	1	1.26
(1,169)	1:100:A:LEU:C	1:101:A:ILE:N	1:101:A:ILE:CA	1:101:A:ILE:C	9	1.25
(1,116)	1:70:A:LEU:N	1:70:A:LEU:CA	1:70:A:LEU:C	1:71:A:GLN:N	5	1.25
(1,39)	1:25:A:ASN:C	1:26:A:ALA:N	1:26:A:ALA:CA	1:26:A:ALA:C	11	1.25
(1,177)	1:104:A:ILE:C	1:105:A:GLU:N	1:105:A:GLU:CA	1:105:A:GLU:C	9	1.24
(1,140)	1:84:A:ILE:N	1:84:A:ILE:CA	1:84:A:ILE:C	1:85:A:SER:N	9	1.24
(1,125)	1:74:A:MET:C	1:75:A:LYS:N	1:75:A:LYS:CA	1:75:A:LYS:C	11	1.24
(1,105)	1:63:A:ASP:C	1:64:A:SER:N	1:64:A:SER:CA	1:64:A:SER:C	5	1.24
(1,32)	1:22:A:THR:N	1:22:A:THR:CA	1:22:A:THR:C	1:23:A:VAL:N	3	1.24
(1,25)	1:18:A:TYR:C	1:19:A:ASN:N	1:19:A:ASN:CA	1:19:A:ASN:C	8	1.24
(1,4)	1:6:A:GLN:N	1:6:A:GLN:CA	1:6:A:GLN:C	1:7:A:TYR:N	18	1.24
(1,191)	1:111:A:ALA:C	1:112:A:ASN:N	1:112:A:ASN:CA	1:112:A:ASN:C	5	1.23
(1,141)	1:84:A:ILE:C	1:85:A:SER:N	1:85:A:SER:CA	1:85:A:SER:C	9	1.23
(1,127)	1:75:A:LYS:C	1:76:A:LYS:N	1:76:A:LYS:CA	1:76:A:LYS:C	16	1.23
(1,73)	1:44:A:TYR:C	1:45:A:ASP:N	1:45:A:ASP:CA	1:45:A:ASP:C	2	1.23
(1,70)	1:42:A:ASN:N	1:42:A:ASN:CA	1:42:A:ASN:C	1:43:A:PRO:N	2	1.23
(1,36)	1:24:A:TYR:N	1:24:A:TYR:CA	1:24:A:TYR:C	1:25:A:ASN:N	6	1.23
(1,181)	1:106:A:GLY:C	1:107:A:ASN:N	1:107:A:ASN:CA	1:107:A:ASN:C	9	1.22
(1,66)	1:40:A:LYS:N	1:40:A:LYS:CA	1:40:A:LYS:C	1:41:A:SER:N	14	1.22
(1,64)	1:39:A:TYR:N	1:39:A:TYR:CA	1:39:A:TYR:C	1:40:A:LYS:N	11	1.22
(1,58)	1:36:A:THR:N	1:36:A:THR:CA	1:36:A:THR:C	1:37:A:PHE:N	19	1.22

Continued on next page...

Continued from previous page...

Key	Atom-1	Atom-2	Atom-3	Atom-4	Model ID	Violation (°)
(1,50)	1:31:A:ILE:N	1:31:A:ILE:CA	1:31:A:ILE:C	1:32:A:GLN:N	1	1.22
(1,48)	1:30:A:ALA:N	1:30:A:ALA:CA	1:30:A:ALA:C	1:31:A:ILE:N	15	1.22
(1,31)	1:21:A:ASN:C	1:22:A:THR:N	1:22:A:THR:CA	1:22:A:THR:C	5	1.22
(1,137)	1:82:A:THR:C	1:83:A:ARG:N	1:83:A:ARG:CA	1:83:A:ARG:C	7	1.21
(1,112)	1:67:A:THR:N	1:67:A:THR:CA	1:67:A:THR:C	1:68:A:ASP:N	19	1.21
(1,75)	1:45:A:ASP:C	1:46:A:ILE:N	1:46:A:ILE:CA	1:46:A:ILE:C	4	1.21
(1,44)	1:28:A:LEU:N	1:28:A:LEU:CA	1:28:A:LEU:C	1:29:A:GLN:N	13	1.21
(1,10)	1:9:A:ASP:N	1:9:A:ASP:CA	1:9:A:ASP:C	1:10:A:GLY:N	7	1.21
(1,177)	1:104:A:ILE:C	1:105:A:GLU:N	1:105:A:GLU:CA	1:105:A:GLU:C	8	1.2
(1,159)	1:95:A:ILE:C	1:96:A:ARG:N	1:96:A:ARG:CA	1:96:A:ARG:C	19	1.2
(1,77)	1:46:A:ILE:C	1:47:A:SER:N	1:47:A:SER:CA	1:47:A:SER:C	7	1.2
(1,10)	1:9:A:ASP:N	1:9:A:ASP:CA	1:9:A:ASP:C	1:10:A:GLY:N	2	1.2
(1,8)	1:8:A:LYS:N	1:8:A:LYS:CA	1:8:A:LYS:C	1:9:A:ASP:N	4	1.2
(1,177)	1:104:A:ILE:C	1:105:A:GLU:N	1:105:A:GLU:CA	1:105:A:GLU:C	13	1.19
(1,177)	1:104:A:ILE:C	1:105:A:GLU:N	1:105:A:GLU:CA	1:105:A:GLU:C	18	1.19
(1,165)	1:98:A:SER:C	1:99:A:ALA:N	1:99:A:ALA:CA	1:99:A:ALA:C	14	1.19
(1,125)	1:74:A:MET:C	1:75:A:LYS:N	1:75:A:LYS:CA	1:75:A:LYS:C	16	1.19
(1,82)	1:49:A:ASN:N	1:49:A:ASN:CA	1:49:A:ASN:C	1:50:A:LYS:N	12	1.19
(1,155)	1:93:A:ASN:C	1:94:A:SER:N	1:94:A:SER:CA	1:94:A:SER:C	2	1.18
(1,130)	1:77:A:LEU:N	1:77:A:LEU:CA	1:77:A:LEU:C	1:78:A:PRO:N	19	1.18
(1,76)	1:46:A:ILE:N	1:46:A:ILE:CA	1:46:A:ILE:C	1:47:A:SER:N	14	1.18
(1,10)	1:9:A:ASP:N	1:9:A:ASP:CA	1:9:A:ASP:C	1:10:A:GLY:N	6	1.18
(1,169)	1:100:A:LEU:C	1:101:A:ILE:N	1:101:A:ILE:CA	1:101:A:ILE:C	13	1.17
(1,155)	1:93:A:ASN:C	1:94:A:SER:N	1:94:A:SER:CA	1:94:A:SER:C	19	1.17
(1,127)	1:75:A:LYS:C	1:76:A:LYS:N	1:76:A:LYS:CA	1:76:A:LYS:C	14	1.17
(1,125)	1:74:A:MET:C	1:75:A:LYS:N	1:75:A:LYS:CA	1:75:A:LYS:C	10	1.17
(1,122)	1:73:A:ALA:N	1:73:A:ALA:CA	1:73:A:ALA:C	1:74:A:MET:N	17	1.17
(1,191)	1:111:A:ALA:C	1:112:A:ASN:N	1:112:A:ASN:CA	1:112:A:ASN:C	8	1.16
(1,177)	1:104:A:ILE:C	1:105:A:GLU:N	1:105:A:GLU:CA	1:105:A:GLU:C	17	1.16
(1,141)	1:84:A:ILE:C	1:85:A:SER:N	1:85:A:SER:CA	1:85:A:SER:C	19	1.16
(1,66)	1:40:A:LYS:N	1:40:A:LYS:CA	1:40:A:LYS:C	1:41:A:SER:N	12	1.16
(1,27)	1:19:A:ASN:C	1:20:A:PHE:N	1:20:A:PHE:CA	1:20:A:PHE:C	2	1.16
(1,26)	1:19:A:ASN:N	1:19:A:ASN:CA	1:19:A:ASN:C	1:20:A:PHE:N	5	1.16
(1,13)	1:11:A:TYR:C	1:12:A:TYR:N	1:12:A:TYR:CA	1:12:A:TYR:C	6	1.16
(1,189)	1:110:A:TYR:C	1:111:A:ALA:N	1:111:A:ALA:CA	1:111:A:ALA:C	19	1.15
(1,148)	1:88:A:TYR:N	1:88:A:TYR:CA	1:88:A:TYR:C	1:89:A:GLY:N	13	1.15
(1,133)	1:80:A:ASN:C	1:81:A:ALA:N	1:81:A:ALA:CA	1:81:A:ALA:C	19	1.15
(1,124)	1:74:A:MET:N	1:74:A:MET:CA	1:74:A:MET:C	1:75:A:LYS:N	6	1.15
(1,114)	1:69:A:SER:N	1:69:A:SER:CA	1:69:A:SER:C	1:70:A:LEU:N	1	1.15
(1,63)	1:38:A:ASP:C	1:39:A:TYR:N	1:39:A:TYR:CA	1:39:A:TYR:C	9	1.15
(1,187)	1:109:A:ARG:C	1:110:A:TYR:N	1:110:A:TYR:CA	1:110:A:TYR:C	17	1.14
(1,181)	1:106:A:GLY:C	1:107:A:ASN:N	1:107:A:ASN:CA	1:107:A:ASN:C	19	1.14
(1,62)	1:38:A:ASP:N	1:38:A:ASP:CA	1:38:A:ASP:C	1:39:A:TYR:N	7	1.14
(1,51)	1:31:A:ILE:C	1:32:A:GLN:N	1:32:A:GLN:CA	1:32:A:GLN:C	8	1.14
(1,38)	1:25:A:ASN:N	1:25:A:ASN:CA	1:25:A:ASN:C	1:26:A:ALA:N	2	1.14
(1,25)	1:18:A:TYR:C	1:19:A:ASN:N	1:19:A:ASN:CA	1:19:A:ASN:C	4	1.14
(1,115)	1:69:A:SER:C	1:70:A:LEU:N	1:70:A:LEU:CA	1:70:A:LEU:C	9	1.13
(1,58)	1:36:A:THR:N	1:36:A:THR:CA	1:36:A:THR:C	1:37:A:PHE:N	15	1.13
(1,5)	1:6:A:GLN:C	1:7:A:TYR:N	1:7:A:TYR:CA	1:7:A:TYR:C	20	1.13
(1,165)	1:98:A:SER:C	1:99:A:ALA:N	1:99:A:ALA:CA	1:99:A:ALA:C	3	1.12
(1,128)	1:76:A:LYS:N	1:76:A:LYS:CA	1:76:A:LYS:C	1:77:A:LEU:N	10	1.12

Continued on next page...

Continued from previous page...

Key	Atom-1	Atom-2	Atom-3	Atom-4	Model ID	Violation (°)
(1,109)	1:65:A:ASP:C	1:66:A:SER:N	1:66:A:SER:CA	1:66:A:SER:C	2	1.12
(1,104)	1:63:A:ASP:N	1:63:A:ASP:CA	1:63:A:ASP:C	1:64:A:SER:N	1	1.12
(1,36)	1:24:A:TYR:N	1:24:A:TYR:CA	1:24:A:TYR:C	1:25:A:ASN:N	7	1.12
(1,21)	1:15:A:THR:C	1:16:A:LEU:N	1:16:A:LEU:CA	1:16:A:LEU:C	14	1.12
(1,190)	1:111:A:ALA:N	1:111:A:ALA:CA	1:111:A:ALA:C	1:112:A:ASN:N	15	1.11
(1,144)	1:86:A:ILE:N	1:86:A:ILE:CA	1:86:A:ILE:C	1:87:A:LYS:N	20	1.11
(1,123)	1:73:A:ALA:C	1:74:A:MET:N	1:74:A:MET:CA	1:74:A:MET:C	20	1.11
(1,78)	1:47:A:SER:N	1:47:A:SER:CA	1:47:A:SER:C	1:48:A:VAL:N	15	1.11
(1,45)	1:28:A:LEU:C	1:29:A:GLN:N	1:29:A:GLN:CA	1:29:A:GLN:C	7	1.11
(1,1)	1:4:A:GLY:C	1:5:A:THR:N	1:5:A:THR:CA	1:5:A:THR:C	18	1.11
(1,165)	1:98:A:SER:C	1:99:A:ALA:N	1:99:A:ALA:CA	1:99:A:ALA:C	7	1.1
(1,137)	1:82:A:THR:C	1:83:A:ARG:N	1:83:A:ARG:CA	1:83:A:ARG:C	11	1.1
(1,116)	1:70:A:LEU:N	1:70:A:LEU:CA	1:70:A:LEU:C	1:71:A:GLN:N	4	1.1
(1,98)	1:60:A:SER:N	1:60:A:SER:CA	1:60:A:SER:C	1:61:A:ALA:N	2	1.1
(1,4)	1:6:A:GLN:N	1:6:A:GLN:CA	1:6:A:GLN:C	1:7:A:TYR:N	10	1.1
(1,190)	1:111:A:ALA:N	1:111:A:ALA:CA	1:111:A:ALA:C	1:112:A:ASN:N	16	1.09
(1,181)	1:106:A:GLY:C	1:107:A:ASN:N	1:107:A:ASN:CA	1:107:A:ASN:C	7	1.09
(1,181)	1:106:A:GLY:C	1:107:A:ASN:N	1:107:A:ASN:CA	1:107:A:ASN:C	18	1.09
(1,145)	1:86:A:ILE:C	1:87:A:LYS:N	1:87:A:LYS:CA	1:87:A:LYS:C	2	1.09
(1,134)	1:81:A:ALA:N	1:81:A:ALA:CA	1:81:A:ALA:C	1:82:A:THR:N	5	1.09
(1,109)	1:65:A:ASP:C	1:66:A:SER:N	1:66:A:SER:CA	1:66:A:SER:C	15	1.09
(1,104)	1:63:A:ASP:N	1:63:A:ASP:CA	1:63:A:ASP:C	1:64:A:SER:N	2	1.09
(1,104)	1:63:A:ASP:N	1:63:A:ASP:CA	1:63:A:ASP:C	1:64:A:SER:N	19	1.09
(1,82)	1:49:A:ASN:N	1:49:A:ASN:CA	1:49:A:ASN:C	1:50:A:LYS:N	19	1.09
(1,70)	1:42:A:ASN:N	1:42:A:ASN:CA	1:42:A:ASN:C	1:43:A:PRO:N	7	1.09
(1,66)	1:40:A:LYS:N	1:40:A:LYS:CA	1:40:A:LYS:C	1:41:A:SER:N	8	1.09
(1,63)	1:38:A:ASP:C	1:39:A:TYR:N	1:39:A:TYR:CA	1:39:A:TYR:C	11	1.09
(1,50)	1:31:A:ILE:N	1:31:A:ILE:CA	1:31:A:ILE:C	1:32:A:GLN:N	7	1.09
(1,4)	1:6:A:GLN:N	1:6:A:GLN:CA	1:6:A:GLN:C	1:7:A:TYR:N	1	1.09
(1,189)	1:110:A:TYR:C	1:111:A:ALA:N	1:111:A:ALA:CA	1:111:A:ALA:C	2	1.08
(1,169)	1:100:A:LEU:C	1:101:A:ILE:N	1:101:A:ILE:CA	1:101:A:ILE:C	6	1.08
(1,165)	1:98:A:SER:C	1:99:A:ALA:N	1:99:A:ALA:CA	1:99:A:ALA:C	2	1.08
(1,148)	1:88:A:TYR:N	1:88:A:TYR:CA	1:88:A:TYR:C	1:89:A:GLY:N	15	1.08
(1,108)	1:65:A:ASP:N	1:65:A:ASP:CA	1:65:A:ASP:C	1:66:A:SER:N	4	1.08
(1,100)	1:61:A:ALA:N	1:61:A:ALA:CA	1:61:A:ALA:C	1:62:A:SER:N	14	1.08
(1,77)	1:46:A:ILE:C	1:47:A:SER:N	1:47:A:SER:CA	1:47:A:SER:C	8	1.08
(1,25)	1:18:A:TYR:C	1:19:A:ASN:N	1:19:A:ASN:CA	1:19:A:ASN:C	2	1.08
(1,25)	1:18:A:TYR:C	1:19:A:ASN:N	1:19:A:ASN:CA	1:19:A:ASN:C	9	1.08
(1,5)	1:6:A:GLN:C	1:7:A:TYR:N	1:7:A:TYR:CA	1:7:A:TYR:C	11	1.08
(1,89)	1:55:A:ASP:C	1:56:A:ALA:N	1:56:A:ALA:CA	1:56:A:ALA:C	10	1.07
(1,75)	1:45:A:ASP:C	1:46:A:ILE:N	1:46:A:ILE:CA	1:46:A:ILE:C	19	1.07
(1,32)	1:22:A:THR:N	1:22:A:THR:CA	1:22:A:THR:C	1:23:A:VAL:N	6	1.07
(1,31)	1:21:A:ASN:C	1:22:A:THR:N	1:22:A:THR:CA	1:22:A:THR:C	7	1.07
(1,169)	1:100:A:LEU:C	1:101:A:ILE:N	1:101:A:ILE:CA	1:101:A:ILE:C	16	1.06
(1,154)	1:93:A:ASN:N	1:93:A:ASN:CA	1:93:A:ASN:C	1:94:A:SER:N	17	1.06
(1,127)	1:75:A:LYS:C	1:76:A:LYS:N	1:76:A:LYS:CA	1:76:A:LYS:C	5	1.06
(1,117)	1:70:A:LEU:C	1:71:A:GLN:N	1:71:A:GLN:CA	1:71:A:GLN:C	17	1.06
(1,104)	1:63:A:ASP:N	1:63:A:ASP:CA	1:63:A:ASP:C	1:64:A:SER:N	16	1.06
(1,87)	1:54:A:THR:C	1:55:A:ASP:N	1:55:A:ASP:CA	1:55:A:ASP:C	8	1.06
(1,30)	1:21:A:ASN:N	1:21:A:ASN:CA	1:21:A:ASN:C	1:22:A:THR:N	20	1.06
(1,192)	1:112:A:ASN:N	1:112:A:ASN:CA	1:112:A:ASN:C	1:113:A:THR:N	17	1.05

Continued on next page...

Continued from previous page...

Key	Atom-1	Atom-2	Atom-3	Atom-4	Model ID	Violation (°)
(1,152)	1:91:A:GLN:N	1:91:A:GLN:CA	1:91:A:GLN:C	1:92:A:GLY:N	2	1.05
(1,60)	1:37:A:PHE:N	1:37:A:PHE:CA	1:37:A:PHE:C	1:38:A:ASP:N	17	1.05
(1,26)	1:19:A:ASN:N	1:19:A:ASN:CA	1:19:A:ASN:C	1:20:A:PHE:N	3	1.05
(1,139)	1:83:A:ARG:C	1:84:A:ILE:N	1:84:A:ILE:CA	1:84:A:ILE:C	1	1.04
(1,125)	1:74:A:MET:C	1:75:A:LYS:N	1:75:A:LYS:CA	1:75:A:LYS:C	17	1.04
(1,117)	1:70:A:LEU:C	1:71:A:GLN:N	1:71:A:GLN:CA	1:71:A:GLN:C	19	1.04
(1,110)	1:66:A:SER:N	1:66:A:SER:CA	1:66:A:SER:C	1:67:A:THR:N	19	1.04
(1,79)	1:47:A:SER:C	1:48:A:VAL:N	1:48:A:VAL:CA	1:48:A:VAL:C	4	1.04
(1,44)	1:28:A:LEU:N	1:28:A:LEU:CA	1:28:A:LEU:C	1:29:A:GLN:N	17	1.04
(1,32)	1:22:A:THR:N	1:22:A:THR:CA	1:22:A:THR:C	1:23:A:VAL:N	1	1.04
(1,31)	1:21:A:ASN:C	1:22:A:THR:N	1:22:A:THR:CA	1:22:A:THR:C	20	1.04
(1,1)	1:4:A:GLY:C	1:5:A:THR:N	1:5:A:THR:CA	1:5:A:THR:C	16	1.04
(1,191)	1:111:A:ALA:C	1:112:A:ASN:N	1:112:A:ASN:CA	1:112:A:ASN:C	12	1.03
(1,127)	1:75:A:LYS:C	1:76:A:LYS:N	1:76:A:LYS:CA	1:76:A:LYS:C	20	1.03
(1,89)	1:55:A:ASP:C	1:56:A:ALA:N	1:56:A:ALA:CA	1:56:A:ALA:C	12	1.03
(1,88)	1:55:A:ASP:N	1:55:A:ASP:CA	1:55:A:ASP:C	1:56:A:ALA:N	18	1.03
(1,125)	1:74:A:MET:C	1:75:A:LYS:N	1:75:A:LYS:CA	1:75:A:LYS:C	18	1.02
(1,118)	1:71:A:GLN:N	1:71:A:GLN:CA	1:71:A:GLN:C	1:72:A:VAL:N	19	1.02
(1,90)	1:56:A:ALA:N	1:56:A:ALA:CA	1:56:A:ALA:C	1:57:A:GLU:N	3	1.02
(1,69)	1:41:A:SER:C	1:42:A:ASN:N	1:42:A:ASN:CA	1:42:A:ASN:C	9	1.02
(1,145)	1:86:A:ILE:C	1:87:A:LYS:N	1:87:A:LYS:CA	1:87:A:LYS:C	7	1.01
(1,138)	1:83:A:ARG:N	1:83:A:ARG:CA	1:83:A:ARG:C	1:84:A:ILE:N	3	1.01
(1,137)	1:82:A:THR:C	1:83:A:ARG:N	1:83:A:ARG:CA	1:83:A:ARG:C	3	1.01
(1,26)	1:19:A:ASN:N	1:19:A:ASN:CA	1:19:A:ASN:C	1:20:A:PHE:N	6	1.01
(1,1)	1:4:A:GLY:C	1:5:A:THR:N	1:5:A:THR:CA	1:5:A:THR:C	6	1.01
(1,141)	1:84:A:ILE:C	1:85:A:SER:N	1:85:A:SER:CA	1:85:A:SER:C	11	1.0
(1,117)	1:70:A:LEU:C	1:71:A:GLN:N	1:71:A:GLN:CA	1:71:A:GLN:C	2	1.0
(1,71)	1:43:A:PRO:C	1:44:A:TYR:N	1:44:A:TYR:CA	1:44:A:TYR:C	11	1.0
(1,50)	1:31:A:ILE:N	1:31:A:ILE:CA	1:31:A:ILE:C	1:32:A:GLN:N	2	1.0