



Full wwPDB X-ray Structure Validation Report ⓘ

Oct 12, 2024 – 09:23 PM EDT

PDB ID : 2LIG
Title : THREE-DIMENSIONAL STRUCTURES OF THE LIGAND-BINDING DOMAIN OF THE BACTERIAL ASPARTATE RECEPTOR WITH AND WITHOUT A LIGAND
Authors : Kim, S.-H.; Yeh, J.I.; Prive, G.G.; Milburn, M.; Scott, W.; Koshland Junior, D.E.
Deposited on : 1995-04-18
Resolution : 2.00 Å(reported)

This is a Full wwPDB X-ray Structure Validation Report for a publicly released PDB entry.

We welcome your comments at validation@mail.wwpdb.org

A user guide is available at

<https://www.wwpdb.org/validation/2017/XrayValidationReportHelp>

with specific help available everywhere you see the ⓘ symbol.

The types of validation reports are described at

<http://www.wwpdb.org/validation/2017/FAQs#types>.

The following versions of software and data (see [references ⓘ](#)) were used in the production of this report:

MolProbity : 4.02b-467
Mogul : 2022.3.0, CSD as543be (2022)
Xtrriage (Phenix) : **NOT EXECUTED**
EDS : **NOT EXECUTED**
Percentile statistics : 20231227.v01 (using entries in the PDB archive December 27th 2023)
Ideal geometry (proteins) : Engh & Huber (2001)
Ideal geometry (DNA, RNA) : Parkinson et al. (1996)
Validation Pipeline (wwPDB-VP) : 2.39

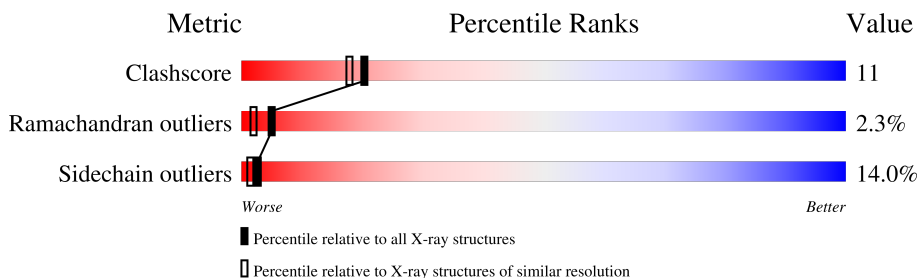
1 Overall quality at a glance

The following experimental techniques were used to determine the structure:

X-RAY DIFFRACTION

The reported resolution of this entry is 2.00 Å.

Percentile scores (ranging between 0-100) for global validation metrics of the entry are shown in the following graphic. The table shows the number of entries on which the scores are based.



Metric	Whole archive (#Entries)	Similar resolution (#Entries, resolution range(Å))
Clashscore	180529	10737 (2.00-2.00)
Ramachandran outliers	177936	10628 (2.00-2.00)
Sidechain outliers	177891	10627 (2.00-2.00)

The table below summarises the geometric issues observed across the polymeric chains and their fit to the electron density. The red, orange, yellow and green segments of the lower bar indicate the fraction of residues that contain outliers for ≥ 3 , 2, 1 and 0 types of geometric quality criteria respectively. A grey segment represents the fraction of residues that are not modelled. The numeric value for each fraction is indicated below the corresponding segment, with a dot representing fractions $\leq 5\%$.

Note EDS was not executed.

Mol	Chain	Length	Quality of chain
1	A	164	
1	B	164	

2 Entry composition [i](#)

There are 5 unique types of molecules in this entry. The entry contains 2622 atoms, of which 0 are hydrogens and 0 are deuteriums.

In the tables below, the ZeroOcc column contains the number of atoms modelled with zero occupancy, the AltConf column contains the number of residues with at least one atom in alternate conformation and the Trace column contains the number of residues modelled with at most 2 atoms.

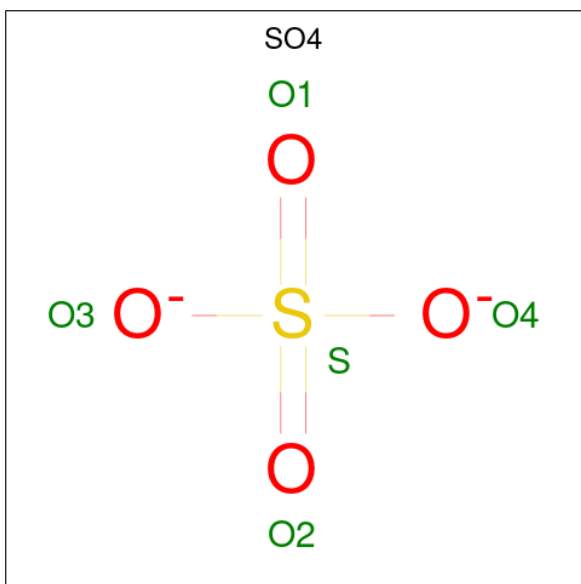
- Molecule 1 is a protein called ASPARTATE RECEPTOR.

Mol	Chain	Residues	Atoms					ZeroOcc	AltConf	Trace
			Total	C	N	O	S			
1	A	157	1223	754	217	242	10	0	0	0
1	B	157	1223	754	217	242	10	0	0	0

There are 2 discrepancies between the modelled and reference sequences:

Chain	Residue	Modelled	Actual	Comment	Reference
A	36	CYS	ASN	conflict	UNP P02941
B	36	CYS	ASN	conflict	UNP P02941

- Molecule 2 is SULFATE ION (three-letter code: SO4) (formula: O₄S).



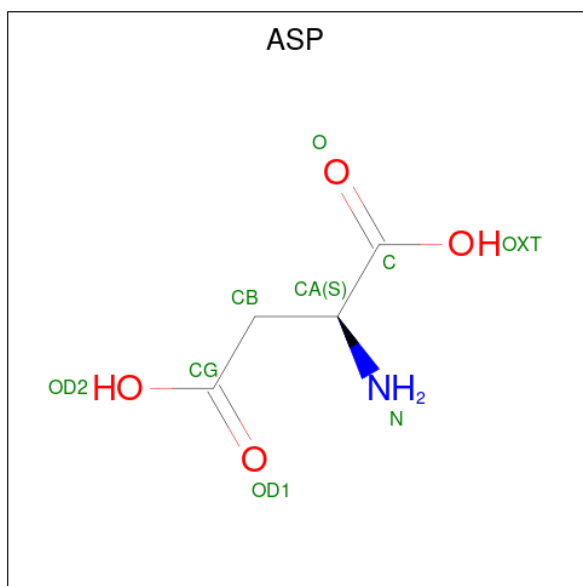
Mol	Chain	Residues	Atoms			ZeroOcc	AltConf
			Total	O	S		
2	A	1	5	4	1	0	0

Continued on next page...

Continued from previous page...

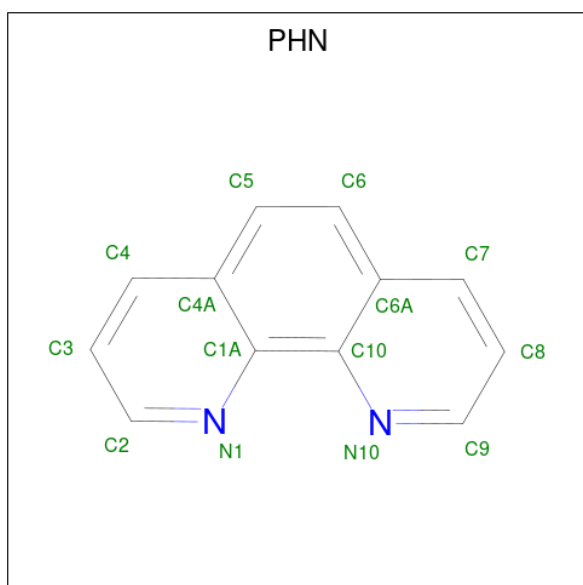
Mol	Chain	Residues	Atoms			ZeroOcc	AltConf
			Total	O	S		
2	A	1	5	4	1	0	0

- Molecule 3 is ASPARTIC ACID (three-letter code: ASP) (formula: C₄H₇NO₄).



Mol	Chain	Residues	Atoms				ZeroOcc	AltConf
			Total	C	N	O		
3	A	1	9	4	1	4	0	0

- Molecule 4 is 1,10-PHENANTHROLINE (three-letter code: PHN) (formula: C₁₂H₈N₂).



Mol	Chain	Residues	Atoms			ZeroOcc	AltConf
4	A	1	Total	C	N	0	0
			14	12	2		

- Molecule 5 is water.

Mol	Chain	Residues	Atoms		ZeroOcc	AltConf
5	A	69	Total	O	0	0
			69	69		
5	B	74	Total	O	0	0
			74	74		

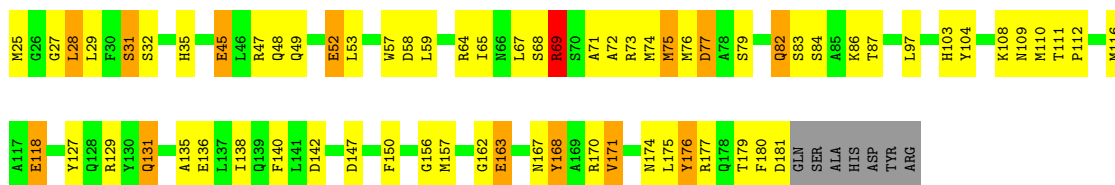
3 Residue-property plots [i](#)

These plots are drawn for all protein, RNA, DNA and oligosaccharide chains in the entry. The first graphic for a chain summarises the proportions of the various outlier classes displayed in the second graphic. The second graphic shows the sequence view annotated by issues in geometry. Residues are color-coded according to the number of geometric quality criteria for which they contain at least one outlier: green = 0, yellow = 1, orange = 2 and red = 3 or more. Stretches of 2 or more consecutive residues without any outlier are shown as a green connector. Residues present in the sample, but not in the model, are shown in grey.

Note EDS was not executed.

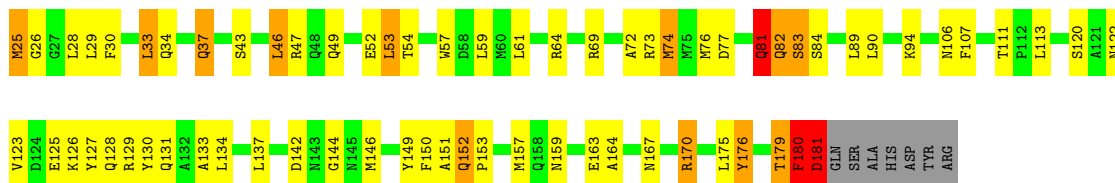
- Molecule 1: ASPARTATE RECEPTOR

Chain A:  54% 34% 8% . .



- Molecule 1: ASPARTATE RECEPTOR

Chain B:  54% 32% 7% . .



4 Data and refinement statistics

Xtrriage (Phenix) and EDS were not executed - this section is therefore incomplete.

Property	Value	Source
Space group	P 32 2 1	Depositor
Cell constants a, b, c, α , β , γ	80.38Å 80.38Å 91.35Å 90.00° 90.00° 120.00°	Depositor
Resolution (Å)	(Not available) – 2.00	Depositor
% Data completeness (in resolution range)	(Not available) ((Not available)-2.00)	Depositor
R_{merge}	(Not available)	Depositor
R_{sym}	(Not available)	Depositor
Refinement program	X-PLOR	Depositor
R, R_{free}	0.176 , (Not available)	Depositor
Estimated twinning fraction	No twinning to report.	Xtrriage
Total number of atoms	2622	wwPDB-VP
Average B, all atoms (Å ²)	28.0	wwPDB-VP

5 Model quality i

5.1 Standard geometry i

Bond lengths and bond angles in the following residue types are not validated in this section: SO4, PHN

The Z score for a bond length (or angle) is the number of standard deviations the observed value is removed from the expected value. A bond length (or angle) with $|Z| > 5$ is considered an outlier worth inspection. RMSZ is the root-mean-square of all Z scores of the bond lengths (or angles).

Mol	Chain	Bond lengths		Bond angles	
		RMSZ	# Z >5	RMSZ	# Z >5
1	A	1.87	15/1241 (1.2%)	2.05	46/1675 (2.7%)
1	B	1.85	16/1241 (1.3%)	2.03	35/1675 (2.1%)
All	All	1.86	31/2482 (1.2%)	2.04	81/3350 (2.4%)

Chiral center outliers are detected by calculating the chiral volume of a chiral center and verifying if the center is modelled as a planar moiety or with the opposite hand. A planarity outlier is detected by checking planarity of atoms in a peptide group, atoms in a mainchain group or atoms of a sidechain that are expected to be planar.

Mol	Chain	#Chirality outliers	#Planarity outliers
1	A	0	1
1	B	0	1
All	All	0	2

All (31) bond length outliers are listed below:

Mol	Chain	Res	Type	Atoms	Z	Observed(Å)	Ideal(Å)
1	A	45	GLU	CD-OE1	-8.44	1.16	1.25
1	A	52	GLU	CD-OE2	-7.91	1.17	1.25
1	A	156	GLY	CA-C	-7.04	1.40	1.51
1	B	120	SER	CA-CB	-6.90	1.42	1.52
1	B	30	PHE	CG-CD1	6.85	1.49	1.38
1	A	162	GLY	CA-C	6.84	1.62	1.51
1	B	43	SER	CA-CB	-5.98	1.44	1.52
1	B	57	TRP	CD2-CE2	-5.90	1.34	1.41
1	A	170	ARG	NE-CZ	5.78	1.40	1.33
1	B	181	ASP	CA-CB	5.77	1.66	1.53
1	B	180	PHE	CG-CD1	5.65	1.47	1.38
1	A	104	TYR	N-CA	-5.63	1.35	1.46
1	A	47	ARG	CZ-NH2	5.53	1.40	1.33
1	A	68	SER	CA-CB	-5.46	1.44	1.52

Continued on next page...

Continued from previous page...

Mol	Chain	Res	Type	Atoms	Z	Observed(Å)	Ideal(Å)
1	A	31	SER	CA-CB	5.42	1.61	1.52
1	A	47	ARG	NE-CZ	5.38	1.40	1.33
1	A	136	GLU	CA-CB	-5.36	1.42	1.53
1	B	64	ARG	CZ-NH1	5.31	1.40	1.33
1	B	176	TYR	CB-CG	5.29	1.59	1.51
1	B	106	ASN	CB-CG	5.28	1.63	1.51
1	B	180	PHE	CE2-CZ	5.26	1.47	1.37
1	B	159	ASN	C-O	5.25	1.33	1.23
1	A	176	TYR	CE2-CZ	-5.19	1.31	1.38
1	A	32	SER	CA-CB	5.13	1.60	1.52
1	B	107	PHE	CG-CD2	-5.12	1.31	1.38
1	A	118	GLU	CG-CD	5.09	1.59	1.51
1	B	26	GLY	N-CA	5.08	1.53	1.46
1	B	94	LYS	CD-CE	5.06	1.63	1.51
1	B	164	ALA	C-O	5.03	1.32	1.23
1	B	64	ARG	C-O	5.02	1.32	1.23
1	A	135	ALA	N-CA	5.00	1.56	1.46

All (81) bond angle outliers are listed below:

Mol	Chain	Res	Type	Atoms	Z	Observed(°)	Ideal(°)
1	B	170	ARG	NE-CZ-NH1	14.63	127.62	120.30
1	A	64	ARG	NE-CZ-NH2	11.87	126.23	120.30
1	B	73	ARG	NE-CZ-NH1	9.97	125.28	120.30
1	A	177	ARG	NE-CZ-NH1	9.43	125.01	120.30
1	B	57	TRP	CE2-CD2-CG	-9.38	99.80	107.30
1	A	157	MET	CG-SD-CE	-9.28	85.36	100.20
1	A	176	TYR	CG-CD2-CE2	-8.94	114.15	121.30
1	B	57	TRP	CD1-CG-CD2	8.76	113.31	106.30
1	B	129	ARG	NE-CZ-NH1	8.74	124.67	120.30
1	B	69	ARG	NE-CZ-NH2	-8.61	116.00	120.30
1	B	129	ARG	NE-CZ-NH2	-8.58	116.01	120.30
1	A	69	ARG	CD-NE-CZ	8.37	135.32	123.60
1	A	57	TRP	CG-CD1-NE1	-8.18	101.92	110.10
1	B	170	ARG	NE-CZ-NH2	-7.94	116.33	120.30
1	B	81	GLN	N-CA-C	7.90	132.32	111.00
1	A	57	TRP	CB-CG-CD1	-7.79	116.87	127.00
1	A	150	PHE	CB-CG-CD1	-7.77	115.36	120.80
1	A	104	TYR	CD1-CE1-CZ	-7.76	112.81	119.80
1	B	180	PHE	CB-CG-CD1	-7.69	115.42	120.80
1	A	163	GLU	CA-CB-CG	7.47	129.83	113.40
1	A	108	LYS	CB-CG-CD	-7.24	92.79	111.60

Continued on next page...

Continued from previous page...

Mol	Chain	Res	Type	Atoms	Z	Observed(°)	Ideal(°)
1	A	116	MET	CG-SD-CE	7.20	111.72	100.20
1	B	64	ARG	NE-CZ-NH2	7.20	123.90	120.30
1	A	112	PRO	N-CA-CB	7.15	111.88	103.30
1	B	57	TRP	CB-CG-CD1	-7.12	117.74	127.00
1	B	57	TRP	CG-CD1-NE1	-6.84	103.26	110.10
1	A	82	GLN	CA-CB-CG	6.81	128.38	113.40
1	A	28	LEU	CA-CB-CG	6.72	130.76	115.30
1	B	123	VAL	CG1-CB-CG2	-6.71	100.16	110.90
1	A	176	TYR	CB-CG-CD2	-6.66	117.01	121.00
1	A	168	TYR	CB-CG-CD1	-6.61	117.04	121.00
1	A	69	ARG	CG-CD-NE	6.57	125.59	111.80
1	A	112	PRO	CA-N-CD	-6.53	102.36	111.50
1	A	77	ASP	N-CA-C	6.50	128.54	111.00
1	A	140	PHE	CB-CG-CD2	-6.50	116.25	120.80
1	B	125	GLU	CA-CB-CG	6.41	127.50	113.40
1	A	57	TRP	CD1-CG-CD2	6.39	111.41	106.30
1	A	29	LEU	CA-CB-CG	6.37	129.96	115.30
1	A	77	ASP	CB-CG-OD1	-6.33	112.60	118.30
1	B	83	SER	N-CA-C	6.30	128.00	111.00
1	B	127	TYR	CB-CG-CD2	-6.26	117.24	121.00
1	B	151	ALA	N-CA-CB	-6.23	101.38	110.10
1	A	69	ARG	NE-CZ-NH1	6.22	123.41	120.30
1	A	76	MET	CA-C-N	-6.05	103.89	117.20
1	A	104	TYR	CB-CG-CD1	-6.02	117.39	121.00
1	B	157	MET	CA-CB-CG	-5.99	103.12	113.30
1	B	82	GLN	N-CA-C	5.98	127.16	111.00
1	A	127	TYR	CB-CG-CD2	-5.93	117.44	121.00
1	A	104	TYR	CE1-CZ-CE2	5.78	129.05	119.80
1	A	181	ASP	CA-CB-CG	5.73	126.01	113.40
1	A	58	ASP	CB-CG-OD1	5.73	123.45	118.30
1	A	127	TYR	CD1-CG-CD2	5.72	124.19	117.90
1	B	73	ARG	NH1-CZ-NH2	-5.70	113.13	119.40
1	B	107	PHE	CG-CD1-CE1	-5.68	114.55	120.80
1	A	25	MET	CA-CB-CG	5.68	122.95	113.30
1	A	131	GLN	N-CA-CB	-5.60	100.53	110.60
1	B	76	MET	CB-CG-SD	-5.55	95.74	112.40
1	B	130	TYR	CG-CD2-CE2	-5.46	116.93	121.30
1	A	64	ARG	NE-CZ-NH1	-5.45	117.57	120.30
1	B	77	ASP	CB-CG-OD1	5.41	123.17	118.30
1	B	129	ARG	N-CA-CB	-5.38	100.92	110.60
1	B	37	GLN	CB-CA-C	-5.37	99.65	110.40
1	A	111	THR	CA-CB-CG2	5.35	119.89	112.40

Continued on next page...

Continued from previous page...

Mol	Chain	Res	Type	Atoms	Z	Observed(°)	Ideal(°)
1	B	47	ARG	NE-CZ-NH1	5.35	122.98	120.30
1	A	25	MET	C-N-CA	5.34	133.52	122.30
1	B	57	TRP	CG-CD2-CE3	5.34	138.71	133.90
1	B	150	PHE	CG-CD1-CE1	-5.33	114.94	120.80
1	B	34	GLN	CB-CG-CD	5.33	125.45	111.60
1	A	171	VAL	CA-C-N	5.29	128.84	117.20
1	B	52	GLU	O-C-N	5.25	131.10	122.70
1	A	163	GLU	CB-CA-C	5.22	120.85	110.40
1	B	54	THR	O-C-N	-5.16	114.44	122.70
1	A	76	MET	O-C-N	5.16	130.95	122.70
1	A	176	TYR	CZ-CE2-CD2	5.15	124.43	119.80
1	B	53	LEU	CB-CG-CD2	-5.15	102.25	111.00
1	A	75	MET	CG-SD-CE	-5.13	92.00	100.20
1	A	53	LEU	O-C-N	-5.09	114.56	122.70
1	A	71	ALA	CB-CA-C	-5.06	102.50	110.10
1	A	163	GLU	N-CA-CB	-5.05	101.51	110.60
1	B	25	MET	CG-SD-CE	5.02	108.24	100.20
1	A	129	ARG	CG-CD-NE	-5.01	101.27	111.80

There are no chirality outliers.

All (2) planarity outliers are listed below:

Mol	Chain	Res	Type	Group
1	A	168	TYR	Sidechain
1	B	180	PHE	Peptide

5.2 Too-close contacts [\(i\)](#)

In the following table, the Non-H and H(model) columns list the number of non-hydrogen atoms and hydrogen atoms in the chain respectively. The H(added) column lists the number of hydrogen atoms added and optimized by MolProbity. The Clashes column lists the number of clashes within the asymmetric unit, whereas Symm-Clashes lists symmetry-related clashes.

Mol	Chain	Non-H	H(model)	H(added)	Clashes	Symm-Clashes
1	A	1223	0	1178	19	0
1	B	1223	0	1178	39	0
2	A	10	0	0	0	0
3	A	9	0	3	0	0
4	A	14	0	8	5	0
5	A	69	0	0	2	0
5	B	74	0	0	0	0

Continued on next page...

Continued from previous page...

Mol	Chain	Non-H	H(model)	H(added)	Clashes	Symm-Clashes
All	All	2622	0	2367	54	0

The all-atom clashscore is defined as the number of clashes found per 1000 atoms (including hydrogen atoms). The all-atom clashscore for this structure is 11.

All (54) close contacts within the same asymmetric unit are listed below, sorted by their clash magnitude.

Atom-1	Atom-2	Interatomic distance (Å)	Clash overlap (Å)
1:B:29:LEU:CB	1:B:181:ASP:O	1.68	1.38
1:B:29:LEU:CD1	1:B:181:ASP:O	1.75	1.32
1:B:29:LEU:CG	1:B:181:ASP:O	1.92	1.17
1:B:29:LEU:HB3	1:B:181:ASP:O	1.47	1.11
1:B:29:LEU:HD12	1:B:181:ASP:O	1.43	1.09
1:B:29:LEU:CA	1:B:181:ASP:C	2.37	0.93
1:B:29:LEU:CA	1:B:181:ASP:O	2.16	0.92
1:B:29:LEU:HA	1:B:181:ASP:C	1.91	0.91
4:A:390:PHN:H8	1:B:179:THR:CG2	2.13	0.79
1:B:29:LEU:CB	1:B:181:ASP:C	2.52	0.78
1:B:167:ASN:HD21	1:B:170:ARG:HH21	1.34	0.75
1:B:29:LEU:HB3	1:B:181:ASP:C	2.10	0.72
1:A:147:ASP:HA	1:B:81:GLN:HE22	1.58	0.69
1:B:74:MET:HE2	1:B:146:MET:SD	2.32	0.68
4:A:390:PHN:H8	1:B:179:THR:HG23	1.80	0.63
1:B:167:ASN:ND2	1:B:170:ARG:HH21	1.95	0.62
1:A:74:MET:O	1:A:83:SER:HA	1.99	0.62
1:A:49:GLN:HG2	1:A:110:MET:SD	2.41	0.60
1:B:29:LEU:HA	1:B:181:ASP:O	1.92	0.58
1:B:74:MET:HE1	1:B:144:GLY:HA2	1.86	0.58
1:B:122:ASN:ND2	1:B:126:LYS:HZ2	2.04	0.56
1:A:118:GLU:HG2	5:A:476:HOH:O	2.05	0.56
1:A:67:LEU:HD21	1:A:138:ILE:HG12	1.89	0.55
1:B:122:ASN:ND2	1:B:126:LYS:NZ	2.56	0.55
1:B:122:ASN:HD21	1:B:126:LYS:NZ	2.05	0.54
1:B:29:LEU:HD13	1:B:181:ASP:O	1.94	0.53
1:B:176:TYR:O	1:B:179:THR:HB	2.09	0.52
1:B:133:ALA:HB1	1:B:152:GLN:HE22	1.75	0.51
1:A:75:MET:HE1	1:B:72:ALA:HB1	1.93	0.51
1:B:122:ASN:HD21	1:B:126:LYS:HZ3	1.58	0.50
4:A:390:PHN:H8	1:B:179:THR:HG21	1.91	0.50
1:B:179:THR:HG22	1:B:180:PHE:HD1	1.78	0.48
1:A:167:ASN:O	1:A:171:VAL:HG23	2.14	0.47

Continued on next page...

Continued from previous page...

Atom-1	Atom-2	Interatomic distance (Å)	Clash overlap (Å)
1:A:147:ASP:HA	1:B:81:GLN:NE2	2.27	0.47
1:B:74:MET:CE	1:B:146:MET:SD	3.03	0.47
1:A:176:TYR:CE1	4:A:390:PHN:H2	2.51	0.46
1:B:49:GLN:NE2	1:B:111:THR:O	2.49	0.46
1:A:45:GLU:HA	1:A:48:GLN:HG2	1.98	0.45
1:B:167:ASN:HD22	1:B:170:ARG:HE	1.64	0.45
1:B:29:LEU:O	1:B:181:ASP:C	2.55	0.45
1:A:31:SER:H	1:A:35:HIS:CD2	2.36	0.44
1:A:27:GLY:HA3	1:B:33:LEU:HD13	2.00	0.43
1:B:46:LEU:HD12	1:B:46:LEU:HA	1.91	0.43
1:A:72:ALA:HB2	5:A:463:HOH:O	2.20	0.42
1:A:31:SER:N	1:A:35:HIS:HD2	2.17	0.42
1:B:29:LEU:C	1:B:181:ASP:C	2.79	0.41
1:A:31:SER:H	1:A:35:HIS:HD2	1.67	0.41
1:A:65:ILE:HG22	1:A:69:ARG:HD3	2.02	0.41
1:A:73:ARG:HG3	1:A:73:ARG:HH11	1.84	0.41
1:B:29:LEU:HD12	1:B:181:ASP:C	2.33	0.41
1:B:137:LEU:HD22	1:B:149:TYR:CD2	2.55	0.41
1:A:52:GLU:OE1	1:A:103:HIS:HD2	2.04	0.41
1:B:137:LEU:HG	1:B:152:GLN:HE21	1.86	0.40
1:A:179:THR:OG1	4:A:390:PHN:H3	2.21	0.40

There are no symmetry-related clashes.

5.3 Torsion angles [i](#)

5.3.1 Protein backbone [i](#)

In the following table, the Percentiles column shows the percent Ramachandran outliers of the chain as a percentile score with respect to all X-ray entries followed by that with respect to entries of similar resolution.

The Analysed column shows the number of residues for which the backbone conformation was analysed, and the total number of residues.

Mol	Chain	Analysed	Favoured	Allowed	Outliers	Percentiles	
1	A	155/164 (94%)	147 (95%)	4 (3%)	4 (3%)	4	1
1	B	155/164 (94%)	146 (94%)	6 (4%)	3 (2%)	6	3
All	All	310/328 (94%)	293 (94%)	10 (3%)	7 (2%)	5	2

All (7) Ramachandran outliers are listed below:

Mol	Chain	Res	Type
1	A	77	ASP
1	A	79	SER
1	A	86	LYS
1	B	82	GLN
1	B	83	SER
1	B	84	SER
1	A	84	SER

5.3.2 Protein sidechains [i](#)

In the following table, the Percentiles column shows the percent sidechain outliers of the chain as a percentile score with respect to all X-ray entries followed by that with respect to entries of similar resolution.

The Analysed column shows the number of residues for which the sidechain conformation was analysed, and the total number of residues.

Mol	Chain	Analysed	Rotameric	Outliers	Percentiles	
1	A	128/134 (96%)	115 (90%)	13 (10%)	6	3
1	B	128/134 (96%)	105 (82%)	23 (18%)	1	0
All	All	256/268 (96%)	220 (86%)	36 (14%)	3	1

All (36) residues with a non-rotameric sidechain are listed below:

Mol	Chain	Res	Type
1	A	28	LEU
1	A	59	LEU
1	A	69	ARG
1	A	82	GLN
1	A	87	THR
1	A	97	LEU
1	A	109	ASN
1	A	131	GLN
1	A	142	ASP
1	A	163	GLU
1	A	174	ASN
1	A	175	LEU
1	A	180	PHE
1	B	25	MET
1	B	28	LEU
1	B	33	LEU

Continued on next page...

Continued from previous page...

Mol	Chain	Res	Type
1	B	37	GLN
1	B	46	LEU
1	B	53	LEU
1	B	59	LEU
1	B	61	LEU
1	B	74	MET
1	B	81	GLN
1	B	89	LEU
1	B	90	LEU
1	B	113	LEU
1	B	128	GLN
1	B	131	GLN
1	B	134	LEU
1	B	142	ASP
1	B	152	GLN
1	B	153	PRO
1	B	163	GLU
1	B	175	LEU
1	B	179	THR
1	B	181	ASP

Sometimes sidechains can be flipped to improve hydrogen bonding and reduce clashes. All (12) such sidechains are listed below:

Mol	Chain	Res	Type
1	A	35	HIS
1	A	49	GLN
1	A	62	GLN
1	A	82	GLN
1	A	99	GLN
1	A	103	HIS
1	A	131	GLN
1	B	81	GLN
1	B	103	HIS
1	B	122	ASN
1	B	152	GLN
1	B	167	ASN

5.3.3 RNA [i](#)

There are no RNA molecules in this entry.

5.4 Non-standard residues in protein, DNA, RNA chains [i](#)

There are no non-standard protein/DNA/RNA residues in this entry.

5.5 Carbohydrates [i](#)

There are no oligosaccharides in this entry.

5.6 Ligand geometry [i](#)

4 ligands are modelled in this entry.

In the following table, the Counts columns list the number of bonds (or angles) for which Mogul statistics could be retrieved, the number of bonds (or angles) that are observed in the model and the number of bonds (or angles) that are defined in the Chemical Component Dictionary. The Link column lists molecule types, if any, to which the group is linked. The Z score for a bond length (or angle) is the number of standard deviations the observed value is removed from the expected value. A bond length (or angle) with $|Z| > 2$ is considered an outlier worth inspection. RMSZ is the root-mean-square of all Z scores of the bond lengths (or angles).

Mol	Type	Chain	Res	Link	Bond lengths			Bond angles		
					Counts	RMSZ	# Z > 2	Counts	RMSZ	# Z > 2
2	SO4	A	901	-	4,4,4	0.97	0	6,6,6	0.82	0
4	PHN	A	390	-	16,16,16	2.64	9 (56%)	22,22,22	1.81	5 (22%)
2	SO4	A	900	-	4,4,4	0.70	0	6,6,6	0.54	0
3	ASP	A	189	-	7,8,8	2.06	3 (42%)	6,10,10	1.73	2 (33%)

In the following table, the Chirals column lists the number of chiral outliers, the number of chiral centers analysed, the number of these observed in the model and the number defined in the Chemical Component Dictionary. Similar counts are reported in the Torsion and Rings columns. '-' means no outliers of that kind were identified.

Mol	Type	Chain	Res	Link	Chirals	Torsions	Rings
4	PHN	A	390	-	-	-	0/3/3/3
3	ASP	A	189	-	-	0/8/8/8	-

All (12) bond length outliers are listed below:

Mol	Chain	Res	Type	Atoms	Z	Observed(Å)	Ideal(Å)
4	A	390	PHN	C6-C6A	-5.79	1.29	1.42
4	A	390	PHN	C7-C6A	-3.89	1.33	1.42
3	A	189	ASP	OD2-CG	-3.26	1.20	1.30
4	A	390	PHN	C5-C4A	-3.25	1.34	1.42

Continued on next page...

Continued from previous page...

Mol	Chain	Res	Type	Atoms	Z	Observed(Å)	Ideal(Å)
3	A	189	ASP	CB-CA	-2.99	1.39	1.53
4	A	390	PHN	C9-N10	2.93	1.38	1.32
4	A	390	PHN	C2-N1	2.93	1.38	1.32
4	A	390	PHN	C10-N10	2.72	1.40	1.36
3	A	189	ASP	OXT-C	-2.54	1.22	1.30
4	A	390	PHN	C3-C2	2.32	1.44	1.37
4	A	390	PHN	C8-C7	-2.20	1.32	1.36
4	A	390	PHN	C6-C5	2.13	1.40	1.35

All (7) bond angle outliers are listed below:

Mol	Chain	Res	Type	Atoms	Z	Observed(°)	Ideal(°)
4	A	390	PHN	C8-C9-N10	-4.86	116.83	123.97
4	A	390	PHN	C7-C8-C9	3.76	123.62	118.92
4	A	390	PHN	C6-C5-C4A	-3.00	116.90	121.34
3	A	189	ASP	OD2-CG-OD1	-2.75	116.26	123.33
3	A	189	ASP	OD2-CG-CB	2.55	121.93	114.00
4	A	390	PHN	C3-C2-N1	-2.47	120.35	123.97
4	A	390	PHN	C5-C6-C6A	2.11	124.46	121.34

There are no chirality outliers.

There are no torsion outliers.

There are no ring outliers.

1 monomer is involved in 5 short contacts:

Mol	Chain	Res	Type	Clashes	Symm-Clashes
4	A	390	PHN	5	0

5.7 Other polymers [i](#)

There are no such residues in this entry.

5.8 Polymer linkage issues [i](#)

There are no chain breaks in this entry.

6 Fit of model and data [i](#)

6.1 Protein, DNA and RNA chains [i](#)

EDS was not executed - this section is therefore empty.

6.2 Non-standard residues in protein, DNA, RNA chains [i](#)

EDS was not executed - this section is therefore empty.

6.3 Carbohydrates [i](#)

EDS was not executed - this section is therefore empty.

6.4 Ligands [i](#)

EDS was not executed - this section is therefore empty.

6.5 Other polymers [i](#)

EDS was not executed - this section is therefore empty.