



Full wwPDB NMR Structure Validation Report ⓘ

Dec 13, 2023 – 07:54 PM EST

PDB ID : 2JQX
Title : Solution structure of Malate Synthase G from joint refinement against NMR and SAXS data
Authors : Grishaev, A.; Tugarinov, V.; Kay, L.E.; Trewhella, J.; Bax, A.
Deposited on : 2007-06-13

This is a Full wwPDB NMR Structure Validation Report for a publicly released PDB entry.

We welcome your comments at validation@mail.wwpdb.org

A user guide is available at

<https://www.wwpdb.org/validation/2017/NMRValidationReportHelp>

with specific help available everywhere you see the ⓘ symbol.

The types of validation reports are described at

<http://www.wwpdb.org/validation/2017/FAQs#types>.

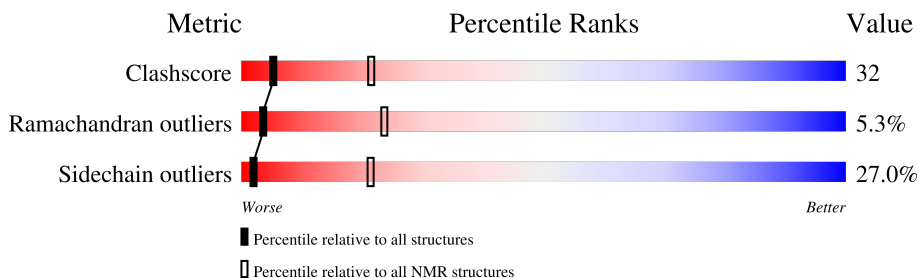
1 Overall quality at a glance

The following experimental techniques were used to determine the structure:

SOLUTION NMR

The overall completeness of chemical shifts assignment was not calculated.

Percentile scores (ranging between 0-100) for global validation metrics of the entry are shown in the following graphic. The table shows the number of entries on which the scores are based.



| Metric | Whole archive (#Entries) | NMR archive (#Entries) |
|-----------------------|-----------------------------|---------------------------|
| Clashscore | 158937 | 12864 |
| Ramachandran outliers | 154571 | 11451 |
| Sidechain outliers | 154315 | 11428 |

The table below summarises the geometric issues observed across the polymeric chains and their fit to the experimental data. The red, orange, yellow and green segments indicate the fraction of residues that contain outliers for ≥ 3 , 2, 1 and 0 types of geometric quality criteria. A cyan segment indicates the fraction of residues that are not part of the well-defined cores, and a grey segment represents the fraction of residues that are not modelled. The numeric value for each fraction is indicated below the corresponding segment, with a dot representing fractions $\leq 5\%$

| Mol | Chain | Length | Quality of chain |
|-----|-------|--------|------------------|
| 1 | A | 723 | |

2 Ensemble composition and analysis

This entry contains 1 models. Identification of well-defined residues and clustering analysis are not possible.

3 Entry composition

There is only 1 type of molecule in this entry. The entry contains 11282 atoms, of which 5627 are hydrogens and 0 are deuteriums.

- Molecule 1 is a protein called Malate synthase G.

| Mol | Chain | Residues | Atoms | | | | | Trace | |
|-----|-------|----------|-------|------|------|------|------|-------|---|
| | | | Total | C | H | N | O | | S |
| 1 | A | 723 | 11282 | 3543 | 5627 | 1015 | 1068 | 29 | 0 |

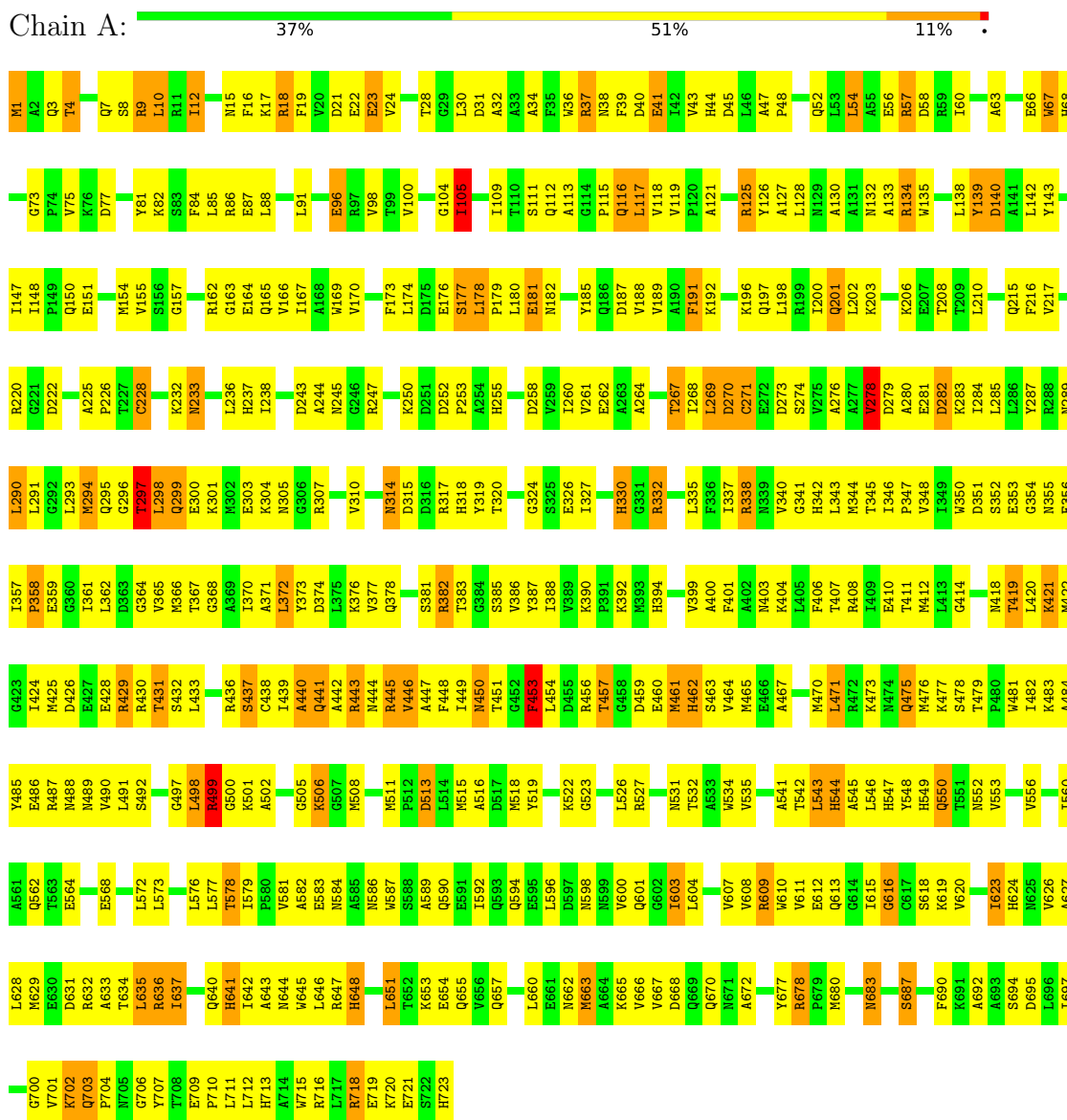
There is a discrepancy between the modelled and reference sequences:

| Chain | Residue | Modelled | Actual | Comment | Reference |
|-------|---------|----------|--------|---------------------|------------|
| A | 2 | ALA | SER | engineered mutation | UNP P37330 |

4 Residue-property plots

These plots are provided for all protein, RNA, DNA and oligosaccharide chains in the entry. The first graphic is the same as shown in the summary in section 1 of this report. The second graphic shows the sequence where residues are colour-coded according to the number of geometric quality criteria for which they contain at least one outlier: green = 0, yellow = 1, orange = 2 and red = 3 or more. Stretches of 2 or more consecutive residues without any outliers are shown as green connectors. Residues which are classified as ill-defined in the NMR ensemble, are shown in cyan with an underline colour-coded according to the previous scheme. Residues which were present in the experimental sample, but not modelled in the final structure are shown in grey.

• Molecule 1: Malate synthase G



5 Refinement protocol and experimental data overview

The models were refined using the following method: *simulated annealing/Cartesian molecular dynamics*.

Of the 5 calculated structures, 1 were deposited, based on the following criterion: *closest to the average*.

The following table shows the software used for structure solution, optimisation and refinement.

| Software name | Classification | Version |
|---------------|----------------|---------|
| CNS | refinement | 1.0 |

No chemical shift data was provided.

6 Model quality

6.1 Standard geometry

There are no covalent bond-length or bond-angle outliers.

There are no bond-length outliers.

There are no bond-angle outliers.

There are no chirality outliers.

There are no planarity outliers.

6.2 Too-close contacts

In the following table, the Non-H and H(model) columns list the number of non-hydrogen atoms and hydrogen atoms in each chain respectively. The H(added) column lists the number of hydrogen atoms added and optimized by MolProbity. The Clashes column lists the number of clashes averaged over the ensemble.

| Mol | Chain | Non-H | H(model) | H(added) | Clashes |
|-----|-------|-------|----------|----------|---------|
| 1 | A | 5655 | 5627 | 5610 | 359 |
| All | All | 5655 | 5627 | 5610 | 359 |

The all-atom clashscore is defined as the number of clashes found per 1000 atoms (including hydrogen atoms). The all-atom clashscore for this structure is 32.

All clashes are listed below, sorted by their clash magnitude.

| Atom-1 | Atom-2 | Clash(Å) | Distance(Å) |
|------------------|------------------|----------|-------------|
| 1:A:117:LEU:HD12 | 1:A:535:VAL:HG23 | 0.94 | 1.34 |
| 1:A:604:LEU:HD22 | 1:A:667:VAL:HG11 | 0.93 | 1.36 |
| 1:A:643:ALA:HB1 | 1:A:701:VAL:HG13 | 0.92 | 1.39 |
| 1:A:198:LEU:HD22 | 1:A:210:LEU:HD11 | 0.91 | 1.43 |
| 1:A:276:ALA:HB3 | 1:A:713:HIS:CG | 0.89 | 2.02 |
| 1:A:98:VAL:HG11 | 1:A:439:ILE:HG22 | 0.88 | 1.43 |
| 1:A:592:ILE:HG21 | 1:A:651:LEU:HD21 | 0.87 | 1.43 |
| 1:A:424:ILE:HG23 | 1:A:447:ALA:HB1 | 0.86 | 1.46 |
| 1:A:109:ILE:HD11 | 1:A:448:PHE:CE2 | 0.85 | 2.06 |
| 1:A:604:LEU:CD2 | 1:A:667:VAL:HG11 | 0.79 | 2.08 |
| 1:A:39:PHE:CE1 | 1:A:365:VAL:HG11 | 0.79 | 2.12 |
| 1:A:663:MET:O | 1:A:667:VAL:HG23 | 0.78 | 1.78 |
| 1:A:162:ARG:O | 1:A:166:VAL:HG23 | 0.76 | 1.81 |
| 1:A:604:LEU:HD21 | 1:A:690:PHE:CD2 | 0.76 | 2.15 |
| 1:A:449:ILE:HG21 | 1:A:489:ASN:ND2 | 0.75 | 1.97 |

Continued on next page...

Continued from previous page...

| Atom-1 | Atom-2 | Clash(Å) | Distance(Å) |
|------------------|------------------|----------|-------------|
| 1:A:672:ALA:HB1 | 1:A:677:TYR:CE2 | 0.75 | 2.16 |
| 1:A:167:ILE:HG21 | 1:A:252:ASP:HB3 | 0.74 | 1.57 |
| 1:A:32:ALA:HB1 | 1:A:36:TRP:CZ2 | 0.74 | 2.17 |
| 1:A:10:LEU:HD23 | 1:A:12:ILE:HD12 | 0.74 | 1.58 |
| 1:A:166:VAL:O | 1:A:170:VAL:HG23 | 0.74 | 1.83 |
| 1:A:276:ALA:HB1 | 1:A:710:PRO:HA | 0.73 | 1.60 |
| 1:A:611:VAL:HG12 | 1:A:719:GLU:HG2 | 0.73 | 1.60 |
| 1:A:596:LEU:O | 1:A:600:VAL:HG23 | 0.72 | 1.84 |
| 1:A:117:LEU:HD12 | 1:A:535:VAL:CG2 | 0.72 | 2.13 |
| 1:A:142:LEU:HD23 | 1:A:147:ILE:HG21 | 0.72 | 1.62 |
| 1:A:238:ILE:HG23 | 1:A:549:HIS:CE1 | 0.72 | 2.20 |
| 1:A:31:ASP:CG | 1:A:34:ALA:HB3 | 0.71 | 2.04 |
| 1:A:603:ILE:O | 1:A:607:VAL:HG23 | 0.71 | 1.86 |
| 1:A:498:LEU:HD13 | 1:A:502:ALA:HB3 | 0.71 | 1.61 |
| 1:A:104:GLY:O | 1:A:419:THR:HG22 | 0.70 | 1.84 |
| 1:A:646:LEU:HD13 | 1:A:646:LEU:O | 0.70 | 1.87 |
| 1:A:374:ASP:OD2 | 1:A:386:VAL:HG23 | 0.69 | 1.88 |
| 1:A:119:VAL:CG2 | 1:A:269:LEU:HD23 | 0.69 | 2.18 |
| 1:A:189:VAL:HG22 | 1:A:201:GLN:O | 0.69 | 1.87 |
| 1:A:367:THR:HA | 1:A:370:ILE:HD12 | 0.68 | 1.64 |
| 1:A:174:LEU:HD23 | 1:A:185:TYR:CD2 | 0.68 | 2.24 |
| 1:A:592:ILE:HG21 | 1:A:651:LEU:CD2 | 0.68 | 2.18 |
| 1:A:448:PHE:CD1 | 1:A:498:LEU:HD21 | 0.68 | 2.22 |
| 1:A:454:LEU:HD22 | 1:A:637:ILE:HG21 | 0.68 | 1.64 |
| 1:A:399:VAL:HG11 | 1:A:437:SER:O | 0.68 | 1.89 |
| 1:A:643:ALA:CB | 1:A:701:VAL:HG13 | 0.68 | 2.18 |
| 1:A:180:LEU:HD13 | 1:A:208:THR:HG21 | 0.67 | 1.66 |
| 1:A:439:ILE:HG21 | 1:A:498:LEU:HA | 0.67 | 1.65 |
| 1:A:604:LEU:HD22 | 1:A:667:VAL:CG1 | 0.66 | 2.18 |
| 1:A:418:ASN:OD1 | 1:A:419:THR:HG23 | 0.66 | 1.91 |
| 1:A:433:LEU:HD13 | 1:A:433:LEU:O | 0.65 | 1.90 |
| 1:A:116:GLN:CD | 1:A:451:THR:HG23 | 0.65 | 2.12 |
| 1:A:98:VAL:HG22 | 1:A:440:ALA:HA | 0.65 | 1.68 |
| 1:A:337:ILE:HG13 | 1:A:386:VAL:HG13 | 0.65 | 1.68 |
| 1:A:138:LEU:HD13 | 1:A:261:VAL:HG21 | 0.64 | 1.69 |
| 1:A:451:THR:HG22 | 1:A:506:LYS:N | 0.64 | 2.07 |
| 1:A:457:THR:HG22 | 1:A:479:THR:CG2 | 0.64 | 2.23 |
| 1:A:39:PHE:O | 1:A:43:VAL:HG23 | 0.63 | 1.93 |
| 1:A:198:LEU:HD22 | 1:A:210:LEU:CD1 | 0.63 | 2.21 |
| 1:A:125:ARG:CZ | 1:A:615:ILE:HD12 | 0.63 | 2.24 |
| 1:A:23:GLU:OE1 | 1:A:24:VAL:HG23 | 0.63 | 1.92 |
| 1:A:296:GLY:O | 1:A:297:THR:HG23 | 0.62 | 1.94 |

Continued on next page...

Continued from previous page...

| Atom-1 | Atom-2 | Clash(Å) | Distance(Å) |
|------------------|------------------|----------|-------------|
| 1:A:603:ILE:HG22 | 1:A:635:LEU:CG | 0.62 | 2.24 |
| 1:A:188:VAL:HG13 | 1:A:200:ILE:CG2 | 0.62 | 2.24 |
| 1:A:407:THR:O | 1:A:411:THR:HG23 | 0.62 | 1.94 |
| 1:A:341:GLY:O | 1:A:361:ILE:HG22 | 0.62 | 1.95 |
| 1:A:626:VAL:HG12 | 1:A:628:LEU:HD13 | 0.62 | 1.72 |
| 1:A:47:ALA:HB3 | 1:A:48:PRO:HD3 | 0.61 | 1.71 |
| 1:A:117:LEU:CD1 | 1:A:535:VAL:HG23 | 0.61 | 2.19 |
| 1:A:478:SER:HB3 | 1:A:637:ILE:HD11 | 0.60 | 1.73 |
| 1:A:287:TYR:CZ | 1:A:291:LEU:HD22 | 0.60 | 2.32 |
| 1:A:43:VAL:O | 1:A:47:ALA:HB2 | 0.60 | 1.95 |
| 1:A:424:ILE:CG2 | 1:A:447:ALA:HB1 | 0.60 | 2.23 |
| 1:A:28:THR:HB | 1:A:372:LEU:HD13 | 0.60 | 1.74 |
| 1:A:486:GLU:O | 1:A:490:VAL:HG23 | 0.59 | 1.97 |
| 1:A:178:LEU:HD12 | 1:A:178:LEU:O | 0.59 | 1.96 |
| 1:A:217:VAL:HG21 | 1:A:232:LYS:HB2 | 0.59 | 1.73 |
| 1:A:498:LEU:HD13 | 1:A:502:ALA:CB | 0.59 | 2.27 |
| 1:A:603:ILE:HG22 | 1:A:635:LEU:CD1 | 0.58 | 2.28 |
| 1:A:346:ILE:O | 1:A:348:VAL:HG23 | 0.58 | 1.98 |
| 1:A:603:ILE:HG22 | 1:A:635:LEU:HD12 | 0.57 | 1.76 |
| 1:A:10:LEU:HD12 | 1:A:351:ASP:HA | 0.57 | 1.74 |
| 1:A:119:VAL:HG21 | 1:A:127:ALA:HB2 | 0.57 | 1.77 |
| 1:A:262:GLU:O | 1:A:545:ALA:HB2 | 0.57 | 1.99 |
| 1:A:116:GLN:OE1 | 1:A:451:THR:HG23 | 0.57 | 2.00 |
| 1:A:464:VAL:CG2 | 1:A:581:VAL:HG12 | 0.57 | 2.30 |
| 1:A:39:PHE:CD1 | 1:A:365:VAL:HG11 | 0.57 | 2.35 |
| 1:A:526:LEU:HD21 | 1:A:547:HIS:CB | 0.57 | 2.30 |
| 1:A:568:GLU:O | 1:A:572:LEU:HD13 | 0.57 | 1.99 |
| 1:A:119:VAL:HG21 | 1:A:269:LEU:HD23 | 0.56 | 1.75 |
| 1:A:287:TYR:CE1 | 1:A:291:LEU:HD13 | 0.56 | 2.35 |
| 1:A:471:LEU:HD23 | 1:A:471:LEU:N | 0.56 | 2.15 |
| 1:A:180:LEU:HD11 | 1:A:188:VAL:CG2 | 0.56 | 2.30 |
| 1:A:187:ASP:OD2 | 1:A:202:LEU:HD22 | 0.56 | 2.00 |
| 1:A:236:LEU:HD12 | 1:A:548:TYR:HB2 | 0.56 | 1.77 |
| 1:A:117:LEU:HD22 | 1:A:130:ALA:HB2 | 0.56 | 1.75 |
| 1:A:589:ALA:HA | 1:A:592:ILE:HD12 | 0.56 | 1.78 |
| 1:A:24:VAL:O | 1:A:28:THR:HG23 | 0.55 | 2.01 |
| 1:A:276:ALA:HB3 | 1:A:713:HIS:ND1 | 0.55 | 2.15 |
| 1:A:451:THR:HG21 | 1:A:534:TRP:N | 0.55 | 2.15 |
| 1:A:343:LEU:HB3 | 1:A:361:ILE:HG23 | 0.55 | 1.78 |
| 1:A:619:LYS:HB3 | 1:A:627:ALA:HB1 | 0.55 | 1.77 |
| 1:A:138:LEU:CD1 | 1:A:261:VAL:HG21 | 0.55 | 2.31 |
| 1:A:456:ARG:NH2 | 1:A:457:THR:HG23 | 0.55 | 2.15 |

Continued on next page...

Continued from previous page...

| Atom-1 | Atom-2 | Clash(Å) | Distance(Å) |
|------------------|------------------|----------|-------------|
| 1:A:31:ASP:OD2 | 1:A:34:ALA:HB3 | 0.55 | 2.02 |
| 1:A:57:ARG:O | 1:A:60:ILE:HG22 | 0.55 | 2.02 |
| 1:A:433:LEU:HD21 | 1:A:577:LEU:HD22 | 0.55 | 1.79 |
| 1:A:12:ILE:N | 1:A:12:ILE:HD13 | 0.55 | 2.17 |
| 1:A:174:LEU:HD23 | 1:A:185:TYR:CE2 | 0.54 | 2.37 |
| 1:A:135:TRP:CD1 | 1:A:260:ILE:HG21 | 0.54 | 2.37 |
| 1:A:388:ILE:HD13 | 1:A:406:PHE:CE1 | 0.54 | 2.37 |
| 1:A:287:TYR:OH | 1:A:291:LEU:HD22 | 0.54 | 2.03 |
| 1:A:573:LEU:O | 1:A:577:LEU:HD23 | 0.54 | 2.03 |
| 1:A:611:VAL:HG12 | 1:A:719:GLU:CG | 0.54 | 2.32 |
| 1:A:86:ARG:HG2 | 1:A:91:LEU:HD13 | 0.53 | 1.81 |
| 1:A:303:GLU:CD | 1:A:620:VAL:HG12 | 0.53 | 2.24 |
| 1:A:581:VAL:HG23 | 1:A:581:VAL:O | 0.53 | 2.03 |
| 1:A:603:ILE:HG22 | 1:A:635:LEU:HG | 0.53 | 1.78 |
| 1:A:543:LEU:HD12 | 1:A:547:HIS:CE1 | 0.53 | 2.39 |
| 1:A:118:VAL:HG22 | 1:A:453:PHE:CE2 | 0.52 | 2.39 |
| 1:A:269:LEU:CD1 | 1:A:293:LEU:HD11 | 0.52 | 2.34 |
| 1:A:465:MET:SD | 1:A:701:VAL:HG12 | 0.52 | 2.44 |
| 1:A:135:TRP:CH2 | 1:A:237:HIS:CD2 | 0.52 | 2.97 |
| 1:A:163:GLY:O | 1:A:167:ILE:HG23 | 0.52 | 2.04 |
| 1:A:616:GLY:HA2 | 1:A:620:VAL:HG11 | 0.52 | 1.82 |
| 1:A:73:GLY:O | 1:A:581:VAL:HG21 | 0.52 | 2.05 |
| 1:A:100:VAL:HG22 | 1:A:442:ALA:HB1 | 0.51 | 1.81 |
| 1:A:188:VAL:HG13 | 1:A:200:ILE:HG23 | 0.51 | 1.83 |
| 1:A:456:ARG:HH21 | 1:A:457:THR:HG23 | 0.51 | 1.64 |
| 1:A:278:VAL:HG22 | 1:A:282:ASP:CG | 0.51 | 2.25 |
| 1:A:147:ILE:HD12 | 1:A:543:LEU:HD11 | 0.51 | 1.80 |
| 1:A:188:VAL:HG11 | 1:A:191:PHE:CE2 | 0.51 | 2.40 |
| 1:A:626:VAL:CG1 | 1:A:628:LEU:HD13 | 0.51 | 2.35 |
| 1:A:148:ILE:HG23 | 1:A:148:ILE:O | 0.50 | 2.06 |
| 1:A:198:LEU:HD13 | 1:A:216:PHE:CE1 | 0.50 | 2.41 |
| 1:A:135:TRP:CZ3 | 1:A:237:HIS:CE1 | 0.50 | 2.99 |
| 1:A:125:ARG:NE | 1:A:615:ILE:HD12 | 0.50 | 2.22 |
| 1:A:280:ALA:O | 1:A:284:ILE:HD12 | 0.50 | 2.07 |
| 1:A:100:VAL:HA | 1:A:442:ALA:HB1 | 0.50 | 1.83 |
| 1:A:439:ILE:HD11 | 1:A:449:ILE:HD11 | 0.50 | 1.83 |
| 1:A:642:ILE:CG2 | 1:A:697:ILE:HG23 | 0.50 | 2.37 |
| 1:A:167:ILE:HD13 | 1:A:252:ASP:CB | 0.49 | 2.37 |
| 1:A:39:PHE:CE1 | 1:A:43:VAL:HG21 | 0.49 | 2.42 |
| 1:A:142:LEU:C | 1:A:148:ILE:HG22 | 0.49 | 2.28 |
| 1:A:200:ILE:HB | 1:A:208:THR:HG23 | 0.49 | 1.84 |
| 1:A:388:ILE:HD13 | 1:A:406:PHE:HE1 | 0.49 | 1.68 |

Continued on next page...

Continued from previous page...

| Atom-1 | Atom-2 | Clash(Å) | Distance(Å) |
|------------------|------------------|----------|-------------|
| 1:A:643:ALA:HB2 | 1:A:697:ILE:O | 0.49 | 2.08 |
| 1:A:238:ILE:HG23 | 1:A:549:HIS:NE2 | 0.49 | 2.22 |
| 1:A:442:ALA:HB2 | 1:A:446:VAL:HG23 | 0.49 | 1.83 |
| 1:A:531:ASN:OD1 | 1:A:532:THR:HG23 | 0.49 | 2.08 |
| 1:A:98:VAL:HG22 | 1:A:440:ALA:CA | 0.49 | 2.36 |
| 1:A:121:ALA:HB2 | 1:A:270:ASP:HA | 0.48 | 1.84 |
| 1:A:167:ILE:HG21 | 1:A:252:ASP:CB | 0.48 | 2.36 |
| 1:A:457:THR:HG22 | 1:A:479:THR:HG21 | 0.48 | 1.86 |
| 1:A:276:ALA:HB1 | 1:A:710:PRO:CA | 0.48 | 2.36 |
| 1:A:400:ALA:HB1 | 1:A:404:LYS:HE2 | 0.48 | 1.85 |
| 1:A:449:ILE:N | 1:A:449:ILE:HD12 | 0.48 | 2.23 |
| 1:A:269:LEU:HD13 | 1:A:293:LEU:HD11 | 0.48 | 1.84 |
| 1:A:446:VAL:CG1 | 1:A:448:PHE:CE2 | 0.48 | 2.97 |
| 1:A:592:ILE:CG2 | 1:A:651:LEU:HD21 | 0.48 | 2.27 |
| 1:A:301:LYS:O | 1:A:615:ILE:HD11 | 0.47 | 2.08 |
| 1:A:424:ILE:N | 1:A:448:PHE:O | 0.47 | 2.47 |
| 1:A:672:ALA:HB1 | 1:A:677:TYR:CD2 | 0.47 | 2.43 |
| 1:A:383:THR:HG23 | 1:A:385:SER:O | 0.47 | 2.08 |
| 1:A:662:ASN:O | 1:A:666:VAL:HG23 | 0.47 | 2.09 |
| 1:A:85:LEU:HD13 | 1:A:85:LEU:C | 0.47 | 2.29 |
| 1:A:202:LEU:HD21 | 1:A:208:THR:HG21 | 0.47 | 1.86 |
| 1:A:222:ASP:OD2 | 1:A:225:ALA:HB3 | 0.47 | 2.09 |
| 1:A:471:LEU:HG | 1:A:582:ALA:HB2 | 0.47 | 1.85 |
| 1:A:491:LEU:HD23 | 1:A:560:ILE:CG2 | 0.47 | 2.39 |
| 1:A:634:THR:O | 1:A:637:ILE:HG22 | 0.47 | 2.09 |
| 1:A:694:SER:HA | 1:A:697:ILE:HD12 | 0.47 | 1.85 |
| 1:A:343:LEU:HD12 | 1:A:343:LEU:C | 0.47 | 2.30 |
| 1:A:319:TYR:O | 1:A:327:ILE:HG22 | 0.46 | 2.10 |
| 1:A:479:THR:O | 1:A:482:ILE:HG22 | 0.46 | 2.10 |
| 1:A:660:LEU:HD13 | 1:A:660:LEU:O | 0.46 | 2.10 |
| 1:A:118:VAL:CG2 | 1:A:453:PHE:CE2 | 0.46 | 2.98 |
| 1:A:607:VAL:O | 1:A:611:VAL:HG23 | 0.46 | 2.10 |
| 1:A:552:ASN:O | 1:A:556:VAL:HG23 | 0.46 | 2.10 |
| 1:A:169:TRP:N | 1:A:169:TRP:CE3 | 0.46 | 2.83 |
| 1:A:244:ALA:HB2 | 1:A:255:HIS:HB3 | 0.46 | 1.86 |
| 1:A:390:LYS:O | 1:A:422:MET:HE1 | 0.46 | 2.11 |
| 1:A:105:ILE:HG22 | 1:A:109:ILE:CG2 | 0.46 | 2.41 |
| 1:A:198:LEU:CD1 | 1:A:216:PHE:CE1 | 0.46 | 2.99 |
| 1:A:320:THR:HG22 | 1:A:324:GLY:O | 0.46 | 2.11 |
| 1:A:442:ALA:HB2 | 1:A:446:VAL:CG2 | 0.46 | 2.41 |
| 1:A:713:HIS:CD2 | 1:A:716:ARG:NH1 | 0.46 | 2.84 |
| 1:A:115:PRO:CD | 1:A:544:HIS:CE1 | 0.45 | 3.00 |

Continued on next page...

Continued from previous page...

| Atom-1 | Atom-2 | Clash(Å) | Distance(Å) |
|------------------|------------------|----------|-------------|
| 1:A:544:HIS:CD2 | 1:A:545:ALA:N | 0.45 | 2.85 |
| 1:A:22:GLU:N | 1:A:22:GLU:OE1 | 0.45 | 2.49 |
| 1:A:68:HIS:ND1 | 1:A:581:VAL:HG11 | 0.45 | 2.26 |
| 1:A:135:TRP:CD1 | 1:A:260:ILE:CG2 | 0.45 | 2.99 |
| 1:A:75:VAL:CG1 | 1:A:81:TYR:CD2 | 0.45 | 3.00 |
| 1:A:148:ILE:HG12 | 1:A:166:VAL:HG22 | 0.45 | 1.87 |
| 1:A:39:PHE:CE1 | 1:A:43:VAL:CG2 | 0.45 | 2.99 |
| 1:A:133:ALA:HB3 | 1:A:264:ALA:HB3 | 0.45 | 1.86 |
| 1:A:294:MET:CE | 1:A:373:TYR:CD1 | 0.45 | 2.99 |
| 1:A:337:ILE:N | 1:A:387:TYR:O | 0.45 | 2.50 |
| 1:A:526:LEU:HD22 | 1:A:548:TYR:CE1 | 0.45 | 2.47 |
| 1:A:526:LEU:O | 1:A:553:VAL:HG12 | 0.45 | 2.12 |
| 1:A:709:GLU:N | 1:A:710:PRO:CD | 0.45 | 2.79 |
| 1:A:75:VAL:HG13 | 1:A:81:TYR:CD2 | 0.44 | 2.47 |
| 1:A:586:ASN:O | 1:A:587:TRP:CE3 | 0.44 | 2.70 |
| 1:A:338:ARG:O | 1:A:338:ARG:NE | 0.44 | 2.50 |
| 1:A:475:GLN:NE2 | 1:A:645:TRP:CZ2 | 0.44 | 2.85 |
| 1:A:198:LEU:CD1 | 1:A:216:PHE:CZ | 0.44 | 2.99 |
| 1:A:442:ALA:CB | 1:A:446:VAL:HG23 | 0.44 | 2.41 |
| 1:A:75:VAL:CG2 | 1:A:579:ILE:HD11 | 0.44 | 2.42 |
| 1:A:340:VAL:HG23 | 1:A:340:VAL:O | 0.44 | 2.13 |
| 1:A:451:THR:O | 1:A:453:PHE:CE2 | 0.44 | 2.71 |
| 1:A:623:ILE:HG23 | 1:A:624:HIS:N | 0.44 | 2.27 |
| 1:A:646:LEU:HD13 | 1:A:646:LEU:C | 0.44 | 2.32 |
| 1:A:287:TYR:HE1 | 1:A:291:LEU:HD13 | 0.44 | 1.71 |
| 1:A:461:MET:O | 1:A:465:MET:N | 0.44 | 2.51 |
| 1:A:130:ALA:O | 1:A:264:ALA:HB3 | 0.44 | 2.13 |
| 1:A:238:ILE:HG22 | 1:A:261:VAL:HG12 | 0.44 | 1.88 |
| 1:A:462:HIS:CG | 1:A:640:GLN:NE2 | 0.44 | 2.86 |
| 1:A:608:VAL:HG13 | 1:A:609:ARG:N | 0.44 | 2.28 |
| 1:A:644:ASN:O | 1:A:648:HIS:CD2 | 0.44 | 2.70 |
| 1:A:109:ILE:HD13 | 1:A:421:LYS:HD3 | 0.43 | 1.90 |
| 1:A:462:HIS:CE1 | 1:A:703:GLN:CG | 0.43 | 3.01 |
| 1:A:600:VAL:O | 1:A:604:LEU:N | 0.43 | 2.51 |
| 1:A:32:ALA:O | 1:A:36:TRP:CG | 0.43 | 2.71 |
| 1:A:21:ASP:OD1 | 1:A:22:GLU:N | 0.43 | 2.51 |
| 1:A:433:LEU:HD13 | 1:A:433:LEU:C | 0.43 | 2.34 |
| 1:A:113:ALA:HB1 | 1:A:548:TYR:CE2 | 0.43 | 2.49 |
| 1:A:9:ARG:CZ | 1:A:40:ASP:CB | 0.43 | 2.97 |
| 1:A:54:LEU:HD13 | 1:A:54:LEU:O | 0.43 | 2.13 |
| 1:A:139:TYR:CE2 | 1:A:140:ASP:OD1 | 0.43 | 2.72 |
| 1:A:113:ALA:CB | 1:A:548:TYR:CE2 | 0.43 | 3.02 |

Continued on next page...

Continued from previous page...

| Atom-1 | Atom-2 | Clash(Å) | Distance(Å) |
|------------------|------------------|----------|-------------|
| 1:A:178:LEU:HD23 | 1:A:233:ASN:CB | 0.43 | 2.44 |
| 1:A:701:VAL:HG23 | 1:A:702:LYS:N | 0.43 | 2.29 |
| 1:A:135:TRP:CH2 | 1:A:237:HIS:NE2 | 0.43 | 2.87 |
| 1:A:448:PHE:CD1 | 1:A:498:LEU:CD2 | 0.43 | 3.00 |
| 1:A:105:ILE:HG22 | 1:A:109:ILE:HG23 | 0.43 | 1.90 |
| 1:A:350:TRP:CE2 | 1:A:354:GLY:CA | 0.43 | 3.01 |
| 1:A:357:ILE:N | 1:A:358:PRO:CD | 0.43 | 2.82 |
| 1:A:644:ASN:OD1 | 1:A:645:TRP:CD1 | 0.43 | 2.72 |
| 1:A:683:ASN:ND2 | 1:A:718:ARG:NH2 | 0.43 | 2.66 |
| 1:A:442:ALA:CB | 1:A:446:VAL:CG2 | 0.43 | 2.97 |
| 1:A:498:LEU:O | 1:A:499:ARG:CB | 0.43 | 2.66 |
| 1:A:456:ARG:HD2 | 1:A:485:TYR:CE1 | 0.42 | 2.49 |
| 1:A:543:LEU:HD12 | 1:A:547:HIS:HE1 | 0.42 | 1.72 |
| 1:A:187:ASP:OD2 | 1:A:202:LEU:HD13 | 0.42 | 2.14 |
| 1:A:372:LEU:HD22 | 1:A:376:LYS:CD | 0.42 | 2.44 |
| 1:A:454:LEU:HD13 | 1:A:634:THR:HA | 0.42 | 1.91 |
| 1:A:4:THR:HG1 | 1:A:12:ILE:C | 0.42 | 2.18 |
| 1:A:84:PHE:O | 1:A:88:LEU:HD12 | 0.42 | 2.14 |
| 1:A:342:HIS:CE1 | 1:A:709:GLU:OE1 | 0.42 | 2.73 |
| 1:A:450:ASN:N | 1:A:450:ASN:OD1 | 0.42 | 2.53 |
| 1:A:63:ALA:O | 1:A:67:TRP:CD2 | 0.42 | 2.73 |
| 1:A:330:HIS:CD2 | 1:A:332:ARG:CZ | 0.42 | 3.02 |
| 1:A:424:ILE:HG23 | 1:A:447:ALA:CB | 0.42 | 2.32 |
| 1:A:459:ASP:CA | 1:A:636:ARG:NH1 | 0.42 | 2.82 |
| 1:A:147:ILE:CD1 | 1:A:543:LEU:HD11 | 0.42 | 2.45 |
| 1:A:173:PHE:CD2 | 1:A:546:LEU:HD22 | 0.42 | 2.50 |
| 1:A:338:ARG:NH2 | 1:A:364:GLY:HA2 | 0.42 | 2.30 |
| 1:A:18:ARG:NH1 | 1:A:22:GLU:CB | 0.42 | 2.83 |
| 1:A:44:HIS:CE1 | 1:A:353:GLU:OE2 | 0.42 | 2.73 |
| 1:A:403:ASN:ND2 | 1:A:445:ARG:CG | 0.42 | 2.83 |
| 1:A:424:ILE:HD13 | 1:A:438:CYS:HB3 | 0.42 | 1.91 |
| 1:A:451:THR:OG1 | 1:A:453:PHE:CE2 | 0.42 | 2.72 |
| 1:A:462:HIS:NE2 | 1:A:703:GLN:NE2 | 0.42 | 2.67 |
| 1:A:478:SER:CB | 1:A:637:ILE:HD11 | 0.42 | 2.45 |
| 1:A:660:LEU:HD13 | 1:A:660:LEU:C | 0.42 | 2.35 |
| 1:A:253:PRO:O | 1:A:255:HIS:CE1 | 0.42 | 2.73 |
| 1:A:337:ILE:HG22 | 1:A:338:ARG:N | 0.42 | 2.29 |
| 1:A:464:VAL:O | 1:A:467:ALA:HB3 | 0.42 | 2.14 |
| 1:A:278:VAL:O | 1:A:278:VAL:CG1 | 0.42 | 2.68 |
| 1:A:1:MET:HB3 | 1:A:4:THR:HG22 | 0.41 | 1.91 |
| 1:A:181:GLU:CA | 1:A:181:GLU:OE1 | 0.41 | 2.68 |
| 1:A:188:VAL:CG1 | 1:A:200:ILE:CG2 | 0.41 | 2.97 |

Continued on next page...

Continued from previous page...

| Atom-1 | Atom-2 | Clash(Å) | Distance(Å) |
|------------------|------------------|----------|-------------|
| 1:A:280:ALA:C | 1:A:284:ILE:HD12 | 0.41 | 2.35 |
| 1:A:454:LEU:HD22 | 1:A:637:ILE:CG2 | 0.41 | 2.41 |
| 1:A:436:ARG:CZ | 1:A:497:GLY:CA | 0.41 | 2.98 |
| 1:A:636:ARG:NH1 | 1:A:706:GLY:O | 0.41 | 2.53 |
| 1:A:641:HIS:O | 1:A:645:TRP:CD2 | 0.41 | 2.73 |
| 1:A:692:ALA:HB2 | 1:A:715:TRP:CG | 0.41 | 2.50 |
| 1:A:711:LEU:O | 1:A:715:TRP:CD1 | 0.41 | 2.73 |
| 1:A:215:GLN:O | 1:A:217:VAL:HG23 | 0.41 | 2.14 |
| 1:A:276:ALA:HB2 | 1:A:709:GLU:CD | 0.41 | 2.36 |
| 1:A:424:ILE:CG1 | 1:A:448:PHE:O | 0.41 | 2.69 |
| 1:A:41:GLU:HA | 1:A:44:HIS:CE1 | 0.41 | 2.51 |
| 1:A:139:TYR:CD1 | 1:A:139:TYR:C | 0.41 | 2.94 |
| 1:A:177:SER:H | 1:A:177:SER:HG | 0.41 | 1.46 |
| 1:A:177:SER:CB | 1:A:550:GLN:NE2 | 0.41 | 2.84 |
| 1:A:180:LEU:CD2 | 1:A:185:TYR:CE1 | 0.41 | 3.04 |
| 1:A:271:CYS:CB | 1:A:632:ARG:CZ | 0.41 | 2.99 |
| 1:A:318:HIS:O | 1:A:319:TYR:CD1 | 0.41 | 2.74 |
| 1:A:338:ARG:O | 1:A:388:ILE:HG23 | 0.41 | 2.15 |
| 1:A:350:TRP:CZ3 | 1:A:356:GLU:O | 0.41 | 2.73 |
| 1:A:481:TRP:O | 1:A:484:ALA:HB3 | 0.41 | 2.15 |
| 1:A:584:ASN:OD1 | 1:A:648:HIS:CD2 | 0.41 | 2.73 |
| 1:A:75:VAL:CG2 | 1:A:579:ILE:CD1 | 0.41 | 2.98 |
| 1:A:236:LEU:CB | 1:A:549:HIS:CD2 | 0.41 | 3.04 |
| 1:A:300:GLU:O | 1:A:310:VAL:N | 0.41 | 2.53 |
| 1:A:350:TRP:CE2 | 1:A:354:GLY:HA3 | 0.41 | 2.51 |
| 1:A:695:ASP:OD2 | 1:A:715:TRP:CZ2 | 0.41 | 2.74 |
| 1:A:32:ALA:O | 1:A:36:TRP:CD2 | 0.41 | 2.74 |
| 1:A:135:TRP:CH2 | 1:A:260:ILE:O | 0.41 | 2.74 |
| 1:A:372:LEU:HD22 | 1:A:376:LYS:HD3 | 0.41 | 1.93 |
| 1:A:464:VAL:HG21 | 1:A:581:VAL:CG1 | 0.41 | 2.46 |
| 1:A:584:ASN:OD1 | 1:A:648:HIS:CG | 0.41 | 2.73 |
| 1:A:611:VAL:HG12 | 1:A:719:GLU:CB | 0.41 | 2.46 |
| 1:A:612:GLU:O | 1:A:723:HIS:CE1 | 0.41 | 2.74 |
| 1:A:612:GLU:O | 1:A:678:ARG:CZ | 0.41 | 2.68 |
| 1:A:642:ILE:CG2 | 1:A:697:ILE:CG2 | 0.41 | 2.99 |
| 1:A:139:TYR:CE2 | 1:A:258:ASP:OD2 | 0.41 | 2.74 |
| 1:A:394:HIS:CE1 | 1:A:431:THR:OG1 | 0.41 | 2.74 |
| 1:A:471:LEU:HD23 | 1:A:471:LEU:H | 0.41 | 1.75 |
| 1:A:482:ILE:HG23 | 1:A:483:LYS:N | 0.41 | 2.29 |
| 1:A:77:ASP:OD2 | 1:A:81:TYR:CD1 | 0.41 | 2.74 |
| 1:A:134:ARG:CZ | 1:A:330:HIS:O | 0.41 | 2.69 |
| 1:A:267:THR:O | 1:A:268:ILE:HD13 | 0.41 | 2.16 |

Continued on next page...

Continued from previous page...

| Atom-1 | Atom-2 | Clash(Å) | Distance(Å) |
|------------------|------------------|----------|-------------|
| 1:A:457:THR:CG2 | 1:A:479:THR:CG2 | 0.41 | 2.99 |
| 1:A:462:HIS:CE1 | 1:A:700:GLY:O | 0.41 | 2.73 |
| 1:A:465:MET:O | 1:A:647:ARG:NH2 | 0.41 | 2.54 |
| 1:A:680:MET:N | 1:A:680:MET:CE | 0.41 | 2.84 |
| 1:A:7:GLN:OE1 | 1:A:36:TRP:CE3 | 0.41 | 2.74 |
| 1:A:189:VAL:O | 1:A:255:HIS:CD2 | 0.41 | 2.74 |
| 1:A:236:LEU:O | 1:A:549:HIS:CE1 | 0.41 | 2.74 |
| 1:A:276:ALA:HB3 | 1:A:713:HIS:CD2 | 0.41 | 2.46 |
| 1:A:464:VAL:HG21 | 1:A:581:VAL:HG12 | 0.41 | 1.92 |
| 1:A:488:ASN:O | 1:A:492:SER:CB | 0.41 | 2.69 |
| 1:A:541:ALA:O | 1:A:544:HIS:CD2 | 0.41 | 2.73 |
| 1:A:631:ASP:OD2 | 1:A:633:ALA:HB3 | 0.41 | 2.15 |
| 1:A:719:GLU:OE2 | 1:A:723:HIS:CD2 | 0.41 | 2.74 |
| 1:A:9:ARG:NH2 | 1:A:37:ARG:NH1 | 0.41 | 2.68 |
| 1:A:44:HIS:CD2 | 1:A:45:ASP:N | 0.41 | 2.89 |
| 1:A:96:GLU:O | 1:A:436:ARG:NH1 | 0.41 | 2.54 |
| 1:A:318:HIS:CD2 | 1:A:326:GLU:OE2 | 0.41 | 2.74 |
| 1:A:377:VAL:HG23 | 1:A:378:GLN:N | 0.41 | 2.31 |
| 1:A:439:ILE:O | 1:A:441:GLN:N | 0.41 | 2.54 |
| 1:A:543:LEU:O | 1:A:547:HIS:CE1 | 0.41 | 2.74 |
| 1:A:109:ILE:HD11 | 1:A:448:PHE:CZ | 0.40 | 2.48 |
| 1:A:132:ASN:CB | 1:A:314:ASN:ND2 | 0.40 | 2.84 |
| 1:A:191:PHE:CD1 | 1:A:191:PHE:N | 0.40 | 2.89 |
| 1:A:294:MET:CE | 1:A:382:ARG:NH1 | 0.40 | 2.84 |
| 1:A:368:GLY:O | 1:A:371:ALA:HB3 | 0.40 | 2.16 |
| 1:A:481:TRP:CZ2 | 1:A:578:THR:O | 0.40 | 2.74 |
| 1:A:608:VAL:O | 1:A:612:GLU:N | 0.40 | 2.54 |
| 1:A:641:HIS:ND1 | 1:A:645:TRP:CH2 | 0.40 | 2.89 |
| 1:A:220:ARG:NH1 | 1:A:228:CYS:HG | 0.40 | 2.13 |
| 1:A:299:GLN:N | 1:A:299:GLN:NE2 | 0.40 | 2.69 |
| 1:A:443:ARG:N | 1:A:443:ARG:NE | 0.40 | 2.69 |
| 1:A:604:LEU:O | 1:A:608:VAL:HG12 | 0.40 | 2.16 |
| 1:A:609:ARG:O | 1:A:613:GLN:CB | 0.40 | 2.69 |
| 1:A:15:ASN:ND2 | 1:A:16:PHE:N | 0.40 | 2.69 |
| 1:A:252:ASP:OD1 | 1:A:252:ASP:O | 0.40 | 2.38 |
| 1:A:330:HIS:CE1 | 1:A:382:ARG:O | 0.40 | 2.74 |
| 1:A:429:ARG:CZ | 1:A:576:LEU:O | 0.40 | 2.69 |
| 1:A:662:ASN:ND2 | 1:A:663:MET:CE | 0.40 | 2.84 |
| 1:A:128:LEU:CD2 | 1:A:132:ASN:ND2 | 0.40 | 2.85 |
| 1:A:273:ASP:OD2 | 1:A:707:TYR:CD2 | 0.40 | 2.74 |
| 1:A:451:THR:HG22 | 1:A:505:GLY:C | 0.40 | 2.36 |
| 1:A:456:ARG:CD | 1:A:485:TYR:CE1 | 0.40 | 3.05 |

Continued on next page...

Continued from previous page...

| Atom-1 | Atom-2 | Clash(Å) | Distance(Å) |
|------------------|------------------|----------|-------------|
| 1:A:488:ASN:ND2 | 1:A:489:ASN:ND2 | 0.40 | 2.70 |
| 1:A:491:LEU:HD23 | 1:A:560:ILE:HG22 | 0.40 | 1.91 |
| 1:A:150:GLN:OE1 | 1:A:150:GLN:CA | 0.40 | 2.70 |
| 1:A:273:ASP:OD1 | 1:A:342:HIS:CE1 | 0.40 | 2.74 |
| 1:A:289:ASN:ND2 | 1:A:290:LEU:N | 0.40 | 2.69 |
| 1:A:516:ALA:HA | 1:A:519:TYR:CD2 | 0.40 | 2.52 |
| 1:A:519:TYR:O | 1:A:523:GLY:N | 0.40 | 2.54 |
| 1:A:610:TRP:CE3 | 1:A:610:TRP:O | 0.40 | 2.74 |

6.3 Torsion angles [i](#)

6.3.1 Protein backbone [i](#)

In the following table, the Percentiles column shows the percent Ramachandran outliers of the chain as a percentile score with respect to all PDB entries followed by that with respect to all NMR entries. The Analysed column shows the number of residues for which the backbone conformation was analysed and the total number of residues.

| Mol | Chain | Analysed | Favoured | Allowed | Outliers | Percentiles |
|-----|-------|----------------|-----------|----------|----------|--------------------|
| 1 | A | 721/723 (100%) | 596 (83%) | 87 (12%) | 38 (5%) | 3 23 |
| All | All | 721/723 (100%) | 596 (83%) | 87 (12%) | 38 (5%) | 3 23 |

All 38 Ramachandran outliers are listed below. They are sorted by the frequency of occurrence in the ensemble.

| Mol | Chain | Res | Type |
|-----|-------|-----|------|
| 1 | A | 8 | SER |
| 1 | A | 30 | LEU |
| 1 | A | 105 | ILE |
| 1 | A | 111 | SER |
| 1 | A | 155 | VAL |
| 1 | A | 157 | GLY |
| 1 | A | 179 | PRO |
| 1 | A | 182 | ASN |
| 1 | A | 226 | PRO |
| 1 | A | 270 | ASP |
| 1 | A | 271 | CYS |
| 1 | A | 278 | VAL |
| 1 | A | 279 | ASP |
| 1 | A | 297 | THR |
| 1 | A | 298 | LEU |

Continued on next page...

Continued from previous page...

| Mol | Chain | Res | Type |
|-----|-------|-----|------|
| 1 | A | 305 | ASN |
| 1 | A | 315 | ASP |
| 1 | A | 330 | HIS |
| 1 | A | 347 | PRO |
| 1 | A | 355 | ASN |
| 1 | A | 358 | PRO |
| 1 | A | 381 | SER |
| 1 | A | 414 | GLY |
| 1 | A | 419 | THR |
| 1 | A | 426 | ASP |
| 1 | A | 440 | ALA |
| 1 | A | 444 | ASN |
| 1 | A | 446 | VAL |
| 1 | A | 453 | PHE |
| 1 | A | 499 | ARG |
| 1 | A | 500 | GLY |
| 1 | A | 506 | LYS |
| 1 | A | 511 | MET |
| 1 | A | 513 | ASP |
| 1 | A | 583 | GLU |
| 1 | A | 616 | GLY |
| 1 | A | 687 | SER |
| 1 | A | 704 | PRO |

6.3.2 Protein sidechains [i](#)

In the following table, the Percentiles column shows the percent sidechain outliers of the chain as a percentile score with respect to all PDB entries followed by that with respect to all NMR entries. The Analysed column shows the number of residues for which the sidechain conformation was analysed and the total number of residues.

| Mol | Chain | Analysed | Rotameric | Outliers | Percentiles | |
|-----|-------|----------------|-----------|-----------|-------------|----|
| 1 | A | 599/599 (100%) | 437 (73%) | 162 (27%) | 2 | 21 |
| All | All | 599/599 (100%) | 437 (73%) | 162 (27%) | 2 | 21 |

All 162 residues with a non-rotameric sidechain are listed below. They are sorted by the frequency of occurrence in the ensemble.

| Mol | Chain | Res | Type |
|-----|-------|-----|------|
| 1 | A | 1 | MET |
| 1 | A | 3 | GLN |

Continued on next page...

Continued from previous page...

| Mol | Chain | Res | Type |
|------------|--------------|------------|-------------|
| 1 | A | 4 | THR |
| 1 | A | 9 | ARG |
| 1 | A | 10 | LEU |
| 1 | A | 12 | ILE |
| 1 | A | 17 | LYS |
| 1 | A | 18 | ARG |
| 1 | A | 19 | PHE |
| 1 | A | 23 | GLU |
| 1 | A | 37 | ARG |
| 1 | A | 38 | ASN |
| 1 | A | 41 | GLU |
| 1 | A | 52 | GLN |
| 1 | A | 54 | LEU |
| 1 | A | 56 | GLU |
| 1 | A | 57 | ARG |
| 1 | A | 58 | ASP |
| 1 | A | 66 | GLU |
| 1 | A | 67 | TRP |
| 1 | A | 82 | LYS |
| 1 | A | 87 | GLU |
| 1 | A | 96 | GLU |
| 1 | A | 105 | ILE |
| 1 | A | 112 | GLN |
| 1 | A | 116 | GLN |
| 1 | A | 117 | LEU |
| 1 | A | 125 | ARG |
| 1 | A | 126 | TYR |
| 1 | A | 134 | ARG |
| 1 | A | 139 | TYR |
| 1 | A | 140 | ASP |
| 1 | A | 143 | TYR |
| 1 | A | 151 | GLU |
| 1 | A | 154 | MET |
| 1 | A | 164 | GLU |
| 1 | A | 165 | GLN |
| 1 | A | 176 | GLU |
| 1 | A | 177 | SER |
| 1 | A | 178 | LEU |
| 1 | A | 181 | GLU |
| 1 | A | 191 | PHE |
| 1 | A | 192 | LYS |
| 1 | A | 196 | LYS |

Continued on next page...

Continued from previous page...

| Mol | Chain | Res | Type |
|------------|--------------|------------|-------------|
| 1 | A | 197 | GLN |
| 1 | A | 201 | GLN |
| 1 | A | 203 | LYS |
| 1 | A | 206 | LYS |
| 1 | A | 228 | CYS |
| 1 | A | 233 | ASN |
| 1 | A | 243 | ASP |
| 1 | A | 245 | ASN |
| 1 | A | 247 | ARG |
| 1 | A | 250 | LYS |
| 1 | A | 267 | THR |
| 1 | A | 269 | LEU |
| 1 | A | 274 | SER |
| 1 | A | 278 | VAL |
| 1 | A | 281 | GLU |
| 1 | A | 282 | ASP |
| 1 | A | 283 | LYS |
| 1 | A | 285 | LEU |
| 1 | A | 290 | LEU |
| 1 | A | 294 | MET |
| 1 | A | 295 | GLN |
| 1 | A | 297 | THR |
| 1 | A | 298 | LEU |
| 1 | A | 299 | GLN |
| 1 | A | 304 | LYS |
| 1 | A | 307 | ARG |
| 1 | A | 314 | ASN |
| 1 | A | 317 | ARG |
| 1 | A | 332 | ARG |
| 1 | A | 335 | LEU |
| 1 | A | 338 | ARG |
| 1 | A | 344 | MET |
| 1 | A | 345 | THR |
| 1 | A | 352 | SER |
| 1 | A | 359 | GLU |
| 1 | A | 362 | LEU |
| 1 | A | 366 | MET |
| 1 | A | 372 | LEU |
| 1 | A | 382 | ARG |
| 1 | A | 392 | LYS |
| 1 | A | 401 | PHE |
| 1 | A | 408 | ARG |

Continued on next page...

Continued from previous page...

| Mol | Chain | Res | Type |
|------------|--------------|------------|-------------|
| 1 | A | 410 | GLU |
| 1 | A | 412 | MET |
| 1 | A | 420 | LEU |
| 1 | A | 421 | LYS |
| 1 | A | 425 | MET |
| 1 | A | 428 | GLU |
| 1 | A | 429 | ARG |
| 1 | A | 430 | ARG |
| 1 | A | 431 | THR |
| 1 | A | 432 | SER |
| 1 | A | 437 | SER |
| 1 | A | 441 | GLN |
| 1 | A | 443 | ARG |
| 1 | A | 445 | ARG |
| 1 | A | 450 | ASN |
| 1 | A | 453 | PHE |
| 1 | A | 457 | THR |
| 1 | A | 460 | GLU |
| 1 | A | 461 | MET |
| 1 | A | 462 | HIS |
| 1 | A | 463 | SER |
| 1 | A | 470 | MET |
| 1 | A | 471 | LEU |
| 1 | A | 473 | LYS |
| 1 | A | 475 | GLN |
| 1 | A | 476 | MET |
| 1 | A | 477 | LYS |
| 1 | A | 487 | ARG |
| 1 | A | 498 | LEU |
| 1 | A | 499 | ARG |
| 1 | A | 501 | LYS |
| 1 | A | 508 | MET |
| 1 | A | 513 | ASP |
| 1 | A | 515 | MET |
| 1 | A | 518 | MET |
| 1 | A | 522 | LYS |
| 1 | A | 527 | ARG |
| 1 | A | 542 | THR |
| 1 | A | 543 | LEU |
| 1 | A | 544 | HIS |
| 1 | A | 550 | GLN |
| 1 | A | 562 | GLN |

Continued on next page...

Continued from previous page...

| Mol | Chain | Res | Type |
|-----|-------|-----|------|
| 1 | A | 564 | GLU |
| 1 | A | 578 | THR |
| 1 | A | 590 | GLN |
| 1 | A | 594 | GLN |
| 1 | A | 598 | ASN |
| 1 | A | 601 | GLN |
| 1 | A | 603 | ILE |
| 1 | A | 609 | ARG |
| 1 | A | 618 | SER |
| 1 | A | 623 | ILE |
| 1 | A | 629 | MET |
| 1 | A | 635 | LEU |
| 1 | A | 636 | ARG |
| 1 | A | 637 | ILE |
| 1 | A | 641 | HIS |
| 1 | A | 648 | HIS |
| 1 | A | 651 | LEU |
| 1 | A | 653 | LYS |
| 1 | A | 654 | GLU |
| 1 | A | 655 | GLN |
| 1 | A | 657 | GLN |
| 1 | A | 663 | MET |
| 1 | A | 665 | LYS |
| 1 | A | 668 | ASP |
| 1 | A | 670 | GLN |
| 1 | A | 678 | ARG |
| 1 | A | 683 | ASN |
| 1 | A | 687 | SER |
| 1 | A | 702 | LYS |
| 1 | A | 703 | GLN |
| 1 | A | 712 | LEU |
| 1 | A | 718 | ARG |
| 1 | A | 720 | LYS |
| 1 | A | 721 | GLU |

6.3.3 RNA [i](#)

There are no RNA molecules in this entry.

6.4 Non-standard residues in protein, DNA, RNA chains [i](#)

There are no non-standard protein/DNA/RNA residues in this entry.

6.5 Carbohydrates [i](#)

There are no monosaccharides in this entry.

6.6 Ligand geometry [i](#)

There are no ligands in this entry.

6.7 Other polymers [i](#)

There are no such molecules in this entry.

6.8 Polymer linkage issues [i](#)

There are no chain breaks in this entry.

7 Chemical shift validation

No chemical shift data were provided