



# Full wwPDB X-ray Structure Validation Report ⓘ

Aug 20, 2023 – 04:28 AM EDT

PDB ID : 2G9Q  
Title : The crystal structure of the glycogen phosphorylase b- 1AB complex  
Authors : Oikonomakos, N.G.; Tiraidis, C.; Leonidas, D.D.; Zographos, S.E.; Kristiansen, M.; Agius, L.  
Deposited on : 2006-03-07  
Resolution : 2.50 Å(reported)

This is a Full wwPDB X-ray Structure Validation Report for a publicly released PDB entry.

We welcome your comments at [validation@mail.wwpdb.org](mailto:validation@mail.wwpdb.org)

A user guide is available at

<https://www.wwpdb.org/validation/2017/XrayValidationReportHelp>

with specific help available everywhere you see the ⓘ symbol.

The types of validation reports are described at

<http://www.wwpdb.org/validation/2017/FAQs#types>.

---

The following versions of software and data (see [references ⓘ](#)) were used in the production of this report:

MolProbity : 4.02b-467  
Mogul : 1.8.5 (274361), CSD as541be (2020)  
Xtrriage (Phenix) : **NOT EXECUTED**  
EDS : **NOT EXECUTED**  
Percentile statistics : 20191225.v01 (using entries in the PDB archive December 25th 2019)  
Ideal geometry (proteins) : Engh & Huber (2001)  
Ideal geometry (DNA, RNA) : Parkinson et al. (1996)  
Validation Pipeline (wwPDB-VP) : 2.35

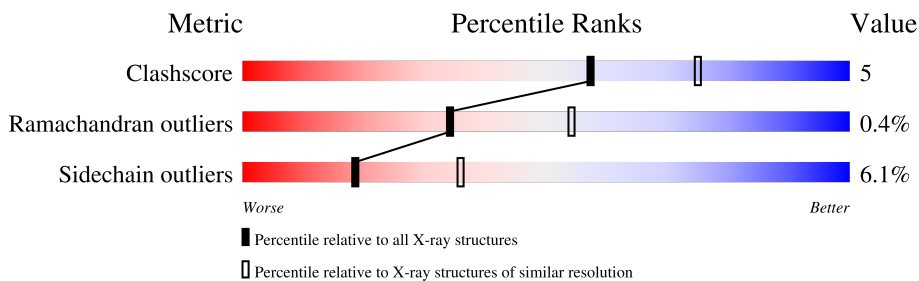
# 1 Overall quality at a glance i

The following experimental techniques were used to determine the structure:

*X-RAY DIFFRACTION*

The reported resolution of this entry is 2.50 Å.

Percentile scores (ranging between 0-100) for global validation metrics of the entry are shown in the following graphic. The table shows the number of entries on which the scores are based.



Metric	Whole archive (#Entries)	Similar resolution (#Entries, resolution range(Å))
Clashscore	141614	5346 (2.50-2.50)
Ramachandran outliers	138981	5231 (2.50-2.50)
Sidechain outliers	138945	5233 (2.50-2.50)

The table below summarises the geometric issues observed across the polymeric chains and their fit to the electron density. The red, orange, yellow and green segments of the lower bar indicate the fraction of residues that contain outliers for  $\geq 3$ , 2, 1 and 0 types of geometric quality criteria respectively. A grey segment represents the fraction of residues that are not modelled. The numeric value for each fraction is indicated below the corresponding segment, with a dot representing fractions  $\leq 5\%$ .

Note EDS was not executed.

Mol	Chain	Length	Quality of chain
1	A	842	 81%      12%      • 5%

## 2 Entry composition [i](#)

There are 4 unique types of molecules in this entry. The entry contains 6664 atoms, of which 0 are hydrogens and 0 are deuteriums.

In the tables below, the ZeroOcc column contains the number of atoms modelled with zero occupancy, the AltConf column contains the number of residues with at least one atom in alternate conformation and the Trace column contains the number of residues modelled with at most 2 atoms.

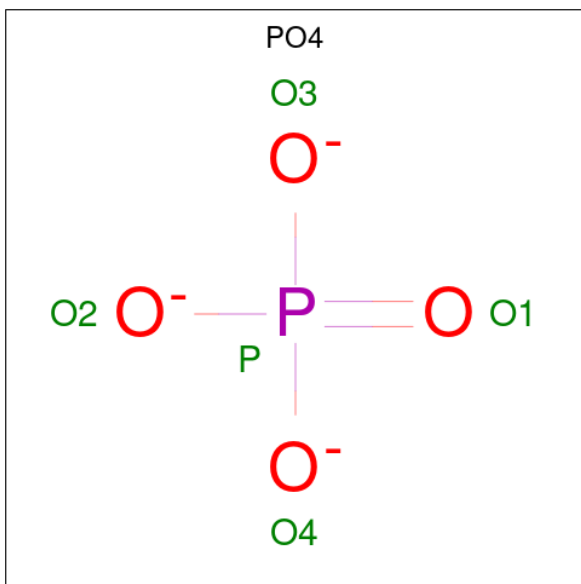
- Molecule 1 is a protein called Glycogen phosphorylase, muscle form.

Mol	Chain	Residues	Atoms						ZeroOcc	AltConf	Trace
			Total	C	N	O	P	S			
1	A	804	6553	4178	1152	1193	1	29	0	0	0

There is a discrepancy between the modelled and reference sequences:

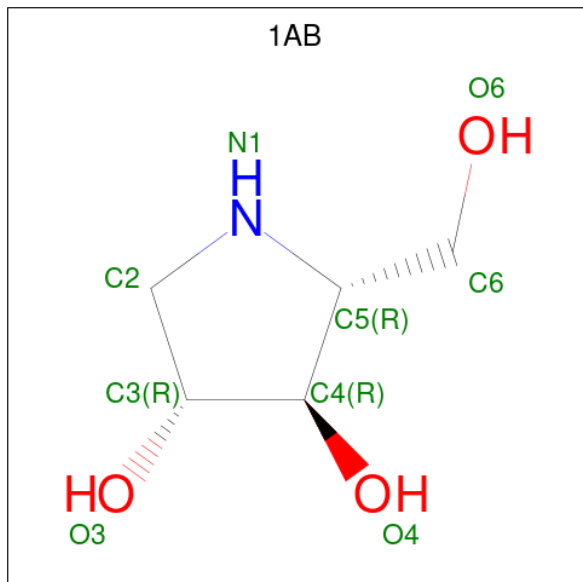
Chain	Residue	Modelled	Actual	Comment	Reference
A	680	LLP	LYS	modified residue	UNP P00489

- Molecule 2 is PHOSPHATE ION (three-letter code: PO4) (formula: O<sub>4</sub>P).



Mol	Chain	Residues	Atoms			ZeroOcc	AltConf
			Total	O	P		
2	A	1	5	4	1	0	0
2	A	1	5	4	1	0	0
2	A	1	5	4	1	0	0

- Molecule 3 is 1,4-DIDEOXY-1,4-IMINO-D-ARABINITOL (three-letter code: 1AB) (formula: C<sub>5</sub>H<sub>11</sub>NO<sub>3</sub>).



Mol	Chain	Residues	Atoms				ZeroOcc	AltConf
			Total	C	N	O		
3	A	1	9	5	1	3	0	0

- Molecule 4 is water.


Mol	Chain	Residues	Atoms		ZeroOcc	AltConf
			Total	O		
4	A	87	87	87	0	0

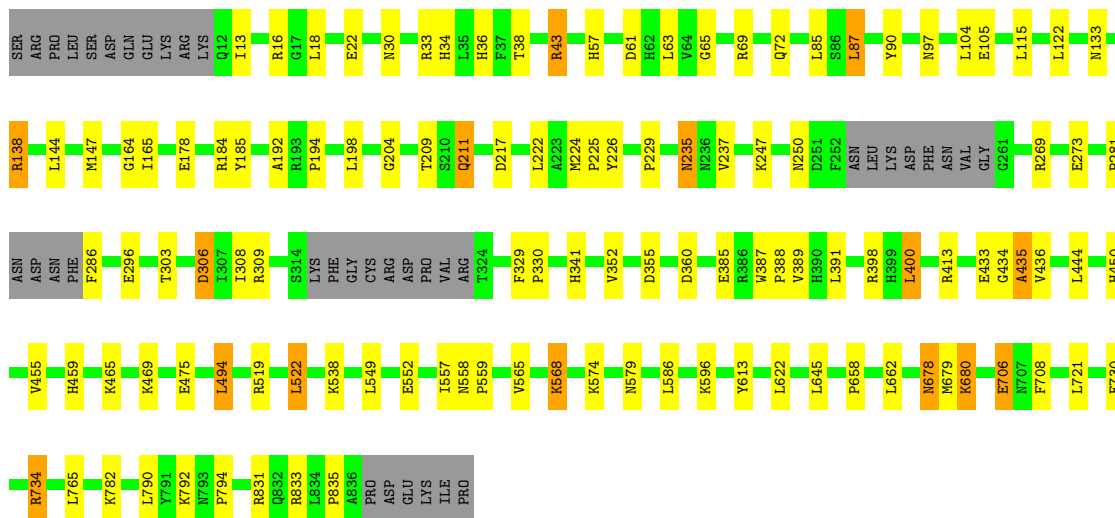
### 3 Residue-property plots

These plots are drawn for all protein, RNA, DNA and oligosaccharide chains in the entry. The first graphic for a chain summarises the proportions of the various outlier classes displayed in the second graphic. The second graphic shows the sequence view annotated by issues in geometry. Residues are color-coded according to the number of geometric quality criteria for which they contain at least one outlier: green = 0, yellow = 1, orange = 2 and red = 3 or more. Stretches of 2 or more consecutive residues without any outlier are shown as a green connector. Residues present in the sample, but not in the model, are shown in grey.

Note EDS was not executed.

- Molecule 1: Glycogen phosphorylase, muscle form

Chain A:  81% 12% 5%



## 4 Data and refinement statistics

Xtrriage (Phenix) and EDS were not executed - this section is therefore incomplete.

Property	Value	Source
Space group	P 43 21 2	Depositor
Cell constants a, b, c, $\alpha$ , $\beta$ , $\gamma$	128.71Å 128.71Å 117.44Å 90.00° 90.00° 90.00°	Depositor
Resolution (Å)	24.69 – 2.50	Depositor
% Data completeness (in resolution range)	91.5 (24.69-2.50)	Depositor
$R_{merge}$	(Not available)	Depositor
$R_{sym}$	0.07	Depositor
Refinement program	REFMAC 5.2.0005	Depositor
R, $R_{free}$	0.190 , 0.243	Depositor
Estimated twinning fraction	No twinning to report.	Xtrriage
Total number of atoms	6664	wwPDB-VP
Average B, all atoms (Å <sup>2</sup> )	53.0	wwPDB-VP

## 5 Model quality [i](#)

### 5.1 Standard geometry [i](#)

Bond lengths and bond angles in the following residue types are not validated in this section: LLP, PO4, 1AB

The Z score for a bond length (or angle) is the number of standard deviations the observed value is removed from the expected value. A bond length (or angle) with  $|Z| > 5$  is considered an outlier worth inspection. RMSZ is the root-mean-square of all Z scores of the bond lengths (or angles).

Mol	Chain	Bond lengths		Bond angles	
		RMSZ	# Z  >5	RMSZ	# Z  >5
1	A	0.49	0/6673	0.60	1/9028 (0.0%)

There are no bond length outliers.

All (1) bond angle outliers are listed below:

Mol	Chain	Res	Type	Atoms	Z	Observed(°)	Ideal(°)
1	A	18	LEU	CA-CB-CG	5.25	127.37	115.30

There are no chirality outliers.

There are no planarity outliers.

### 5.2 Too-close contacts [i](#)

In the following table, the Non-H and H(model) columns list the number of non-hydrogen atoms and hydrogen atoms in the chain respectively. The H(added) column lists the number of hydrogen atoms added and optimized by MolProbity. The Clashes column lists the number of clashes within the asymmetric unit, whereas Symm-Clashes lists symmetry-related clashes.

Mol	Chain	Non-H	H(model)	H(added)	Clashes	Symm-Clashes
1	A	6553	0	6496	63	0
2	A	15	0	0	1	0
3	A	9	0	11	0	0
4	A	87	0	0	1	0
All	All	6664	0	6507	64	0

The all-atom clashscore is defined as the number of clashes found per 1000 atoms (including hydrogen atoms). The all-atom clashscore for this structure is 5.

All (64) close contacts within the same asymmetric unit are listed below, sorted by their clash

magnitude.

Atom-1	Atom-2	Interatomic distance (Å)	Clash overlap (Å)
1:A:87:LEU:HD13	1:A:341:HIS:HB3	1.61	0.81
1:A:165:ILE:HD11	1:A:281:PRO:HB3	1.63	0.81
1:A:222:LEU:HB2	1:A:247:LYS:O	1.87	0.73
1:A:730:GLU:O	1:A:734:ARG:HG2	1.90	0.72
1:A:455:VAL:H	1:A:459:HIS:HD2	1.41	0.67
1:A:235:ASN:ND2	1:A:237:VAL:H	1.94	0.65
1:A:355:ASP:OD1	1:A:398:ARG:HD3	1.97	0.64
1:A:30:ASN:OD1	1:A:33:ARG:NH2	2.31	0.60
1:A:138:ARG:O	1:A:138:ARG:HD3	2.02	0.59
1:A:678:ASN:HD22	1:A:678:ASN:N	2.02	0.57
1:A:678:ASN:HD22	1:A:679:MET:H	1.51	0.57
1:A:308:ILE:HD13	1:A:352:VAL:HG11	1.88	0.55
1:A:329:PHE:HB3	1:A:330:PRO:HD3	1.87	0.55
1:A:34:HIS:HE1	1:A:61:ASP:OD1	1.91	0.53
1:A:568:LYS:HG3	1:A:574:LYS:HD3	1.91	0.52
1:A:250:ASN:HA	1:A:269:ARG:HH22	1.76	0.51
1:A:63:LEU:HD13	1:A:229:PRO:HG2	1.92	0.51
1:A:286:PHE:CD2	1:A:385:GLU:HG2	2.45	0.50
1:A:389:VAL:HG13	1:A:400:LEU:HD11	1.93	0.50
1:A:465:LYS:O	1:A:469:LYS:HD2	2.12	0.50
1:A:224:MET:HE3	1:A:247:LYS:HE2	1.95	0.49
1:A:65:GLY:O	1:A:69:ARG:HG2	2.11	0.49
1:A:16:ARG:HB3	1:A:105:GLU:HB3	1.94	0.48
1:A:247:LYS:HB3	1:A:247:LYS:HE3	1.56	0.47
1:A:413:ARG:NH1	1:A:475:GLU:OE2	2.46	0.47
1:A:165:ILE:CD1	1:A:281:PRO:HB3	2.41	0.46
1:A:192:ALA:HB2	1:A:226:TYR:CE2	2.51	0.46
1:A:306:ASP:CG	1:A:309:ARG:HH11	2.18	0.46
1:A:85:LEU:HD11	1:A:303:THR:HG21	1.97	0.46
1:A:43:ARG:HD2	1:A:43:ARG:H	1.81	0.45
1:A:558:ASN:HA	1:A:559:PRO:HD3	1.86	0.45
1:A:678:ASN:N	1:A:678:ASN:ND2	2.64	0.45
1:A:69:ARG:HH12	1:A:835:PRO:HB2	1.82	0.45
1:A:144:LEU:HD23	1:A:147:MET:CE	2.47	0.45
1:A:209:THR:C	1:A:211:GLN:N	2.69	0.45
1:A:680:LLP:O3	1:A:680:LLP:NZ	2.50	0.45
1:A:247:LYS:HA	1:A:273:GLU:HG2	1.99	0.44
1:A:144:LEU:HD23	1:A:147:MET:HE3	2.00	0.44
1:A:235:ASN:C	1:A:235:ASN:HD22	2.21	0.44
1:A:678:ASN:ND2	1:A:679:MET:H	2.13	0.44
1:A:296:GLU:OE1	1:A:385:GLU:OE2	2.36	0.43

*Continued on next page...*



Continued from previous page...

Atom-1	Atom-2	Interatomic distance (Å)	Clash overlap (Å)
1:A:549:LEU:HD12	1:A:557:ILE:HD13	1.99	0.43
1:A:434:GLY:O	1:A:435:ALA:C	2.56	0.43
1:A:34:HIS:HD2	1:A:38:THR:OG1	2.02	0.43
1:A:450:HIS:HE1	4:A:1065:HOH:O	2.02	0.43
1:A:519:ARG:O	1:A:522:LEU:HB2	2.17	0.43
1:A:138:ARG:HD3	1:A:138:ARG:C	2.39	0.43
1:A:538:LYS:NZ	1:A:658:PRO:O	2.50	0.43
1:A:133:ASN:HD21	1:A:281:PRO:HA	1.84	0.42
1:A:97:ASN:HA	1:A:494:LEU:HD11	2.01	0.42
1:A:204:GLY:HA2	1:A:217:ASP:O	2.19	0.42
1:A:63:LEU:HD13	1:A:229:PRO:CG	2.50	0.42
1:A:706:GLU:H	1:A:706:GLU:CD	2.24	0.41
1:A:13:ILE:HG13	1:A:16:ARG:HG3	2.03	0.41
1:A:34:HIS:CD2	1:A:38:THR:OG1	2.74	0.41
1:A:184:ARG:HH11	1:A:185:TYR:HE2	1.69	0.41
1:A:43:ARG:HD2	1:A:43:ARG:N	2.36	0.41
1:A:194:PRO:HB3	1:A:224:MET:HE2	2.03	0.41
1:A:224:MET:HA	1:A:225:PRO:HD3	1.92	0.41
1:A:387:TRP:HA	1:A:388:PRO:HD3	1.97	0.41
2:A:997:PO4:O2	2:A:995:PO4:O1	2.38	0.41
1:A:355:ASP:OD2	1:A:398:ARG:NH2	2.54	0.40
1:A:34:HIS:CD2	1:A:57:HIS:HB3	2.55	0.40
1:A:792:LYS:O	1:A:794:PRO:HD3	2.22	0.40

There are no symmetry-related clashes.

## 5.3 Torsion angles [i](#)

### 5.3.1 Protein backbone [i](#)

In the following table, the Percentiles column shows the percent Ramachandran outliers of the chain as a percentile score with respect to all X-ray entries followed by that with respect to entries of similar resolution.

The Analysed column shows the number of residues for which the backbone conformation was analysed, and the total number of residues.

Mol	Chain	Analysed	Favoured	Allowed	Outliers	Percentiles
1	A	795/842 (94%)	757 (95%)	35 (4%)	3 (0%)	34   54

All (3) Ramachandran outliers are listed below:

Mol	Chain	Res	Type
1	A	435	ALA
1	A	36	HIS
1	A	164	GLY

### 5.3.2 Protein sidechains [i](#)

In the following table, the Percentiles column shows the percent sidechain outliers of the chain as a percentile score with respect to all X-ray entries followed by that with respect to entries of similar resolution.

The Analysed column shows the number of residues for which the sidechain conformation was analysed, and the total number of residues.

Mol	Chain	Analysed	Rotameric	Outliers	Percentiles
1	A	694/730 (95%)	652 (94%)	42 (6%)	18 36

All (42) residues with a non-rotameric sidechain are listed below:

Mol	Chain	Res	Type
1	A	22	GLU
1	A	43	ARG
1	A	72	GLN
1	A	87	LEU
1	A	90	TYR
1	A	104	LEU
1	A	115	LEU
1	A	122	LEU
1	A	138	ARG
1	A	178	GLU
1	A	198	LEU
1	A	211	GLN
1	A	235	ASN
1	A	306	ASP
1	A	360	ASP
1	A	391	LEU
1	A	400	LEU
1	A	433	GLU
1	A	436	VAL
1	A	444	LEU
1	A	494	LEU
1	A	522	LEU
1	A	552	GLU
1	A	565	VAL

*Continued on next page...*

*Continued from previous page...*

Mol	Chain	Res	Type
1	A	568	LYS
1	A	579	ASN
1	A	586	LEU
1	A	596	LYS
1	A	613	TYR
1	A	622	LEU
1	A	645	LEU
1	A	662	LEU
1	A	678	ASN
1	A	706	GLU
1	A	708	PHE
1	A	721	LEU
1	A	734	ARG
1	A	765	LEU
1	A	782	LYS
1	A	790	LEU
1	A	831	ARG
1	A	833	ARG

Sometimes sidechains can be flipped to improve hydrogen bonding and reduce clashes. All (13) such sidechains are listed below:

Mol	Chain	Res	Type
1	A	34	HIS
1	A	97	ASN
1	A	133	ASN
1	A	235	ASN
1	A	412	ASN
1	A	459	HIS
1	A	481	ASN
1	A	484	ASN
1	A	566	GLN
1	A	579	ASN
1	A	678	ASN
1	A	727	ASN
1	A	832	GLN

### 5.3.3 RNA [i](#)

There are no RNA molecules in this entry.

## 5.4 Non-standard residues in protein, DNA, RNA chains [i](#)

1 non-standard protein/DNA/RNA residue is modelled in this entry.

In the following table, the Counts columns list the number of bonds (or angles) for which Mogul statistics could be retrieved, the number of bonds (or angles) that are observed in the model and the number of bonds (or angles) that are defined in the Chemical Component Dictionary. The Link column lists molecule types, if any, to which the group is linked. The Z score for a bond length (or angle) is the number of standard deviations the observed value is removed from the expected value. A bond length (or angle) with  $|Z| > 2$  is considered an outlier worth inspection. RMSZ is the root-mean-square of all Z scores of the bond lengths (or angles).

Mol	Type	Chain	Res	Link	Bond lengths			Bond angles		
					Counts	RMSZ	# Z  > 2	Counts	RMSZ	# Z  > 2
1	LLP	A	680	1	23,24,25	1.64	3 (13%)	25,32,34	1.30	3 (12%)

In the following table, the Chirals column lists the number of chiral outliers, the number of chiral centers analysed, the number of these observed in the model and the number defined in the Chemical Component Dictionary. Similar counts are reported in the Torsion and Rings columns. '-' means no outliers of that kind were identified.

Mol	Type	Chain	Res	Link	Chirals	Torsions	Rings
1	LLP	A	680	1	-	2/16/17/19	0/1/1/1

All (3) bond length outliers are listed below:

Mol	Chain	Res	Type	Atoms	Z	Observed(Å)	Ideal(Å)
1	A	680	LLP	O3-C3	-5.53	1.24	1.37
1	A	680	LLP	C4-C4'	2.58	1.51	1.46
1	A	680	LLP	C2-N1	2.38	1.38	1.33

All (3) bond angle outliers are listed below:

Mol	Chain	Res	Type	Atoms	Z	Observed(°)	Ideal(°)
1	A	680	LLP	CE-NZ-C4'	-2.56	111.04	118.90
1	A	680	LLP	C4-C4'-NZ	-2.56	112.56	124.31
1	A	680	LLP	C5-C6-N1	-2.28	120.02	123.82

There are no chirality outliers.

All (2) torsion outliers are listed below:

Mol	Chain	Res	Type	Atoms
1	A	680	LLP	C4-C5-C5'-OP4
1	A	680	LLP	C6-C5-C5'-OP4

There are no ring outliers.

1 monomer is involved in 1 short contact:

Mol	Chain	Res	Type	Clashes	Symm-Clashes
1	A	680	LLP	1	0

## 5.5 Carbohydrates [i](#)

There are no monosaccharides in this entry.

## 5.6 Ligand geometry [i](#)

4 ligands are modelled in this entry.

In the following table, the Counts columns list the number of bonds (or angles) for which Mogul statistics could be retrieved, the number of bonds (or angles) that are observed in the model and the number of bonds (or angles) that are defined in the Chemical Component Dictionary. The Link column lists molecule types, if any, to which the group is linked. The Z score for a bond length (or angle) is the number of standard deviations the observed value is removed from the expected value. A bond length (or angle) with  $|Z| > 2$  is considered an outlier worth inspection. RMSZ is the root-mean-square of all Z scores of the bond lengths (or angles).

Mol	Type	Chain	Res	Link	Bond lengths			Bond angles		
					Counts	RMSZ	# Z  > 2	Counts	RMSZ	# Z  > 2
3	1AB	A	998	-	9,9,9	0.62	0	6,12,12	0.51	0
2	PO4	A	996	-	4,4,4	0.95	0	6,6,6	0.40	0
2	PO4	A	997	-	4,4,4	0.92	0	6,6,6	0.89	0
2	PO4	A	995	-	4,4,4	0.94	0	6,6,6	0.62	0

In the following table, the Chirals column lists the number of chiral outliers, the number of chiral centers analysed, the number of these observed in the model and the number defined in the Chemical Component Dictionary. Similar counts are reported in the Torsion and Rings columns. '-' means no outliers of that kind were identified.

Mol	Type	Chain	Res	Link	Chirals	Torsions	Rings
3	1AB	A	998	-	-	0/2/15/15	0/1/1/1

There are no bond length outliers.

There are no bond angle outliers.

There are no chirality outliers.

There are no torsion outliers.

There are no ring outliers.

2 monomers are involved in 1 short contact:

Mol	Chain	Res	Type	Clashes	Symm-Clashes
2	A	997	PO4	1	0
2	A	995	PO4	1	0

## 5.7 Other polymers [i](#)

There are no such residues in this entry.

## 5.8 Polymer linkage issues [i](#)

There are no chain breaks in this entry.

## 6 Fit of model and data [i](#)

### 6.1 Protein, DNA and RNA chains [i](#)

EDS was not executed - this section is therefore empty.

### 6.2 Non-standard residues in protein, DNA, RNA chains [i](#)

EDS was not executed - this section is therefore empty.

### 6.3 Carbohydrates [i](#)

EDS was not executed - this section is therefore empty.

### 6.4 Ligands [i](#)

EDS was not executed - this section is therefore empty.

### 6.5 Other polymers [i](#)

EDS was not executed - this section is therefore empty.