



# Full wwPDB X-ray Structure Validation Report ⓘ

Oct 13, 2024 – 12:12 am BST

PDB ID : 2C5U  
Title : T4 RNA Ligase (Rnl1) Crystal Structure  
Authors : El Omari, K.; Ren, J.; Bird, L.E.; Bona, M.K.; Klarmann, G.; LeGrice, S.F.J.;  
Stammers, D.K.  
Deposited on : 2005-11-01  
Resolution : 2.21 Å(reported)

This is a Full wwPDB X-ray Structure Validation Report for a publicly released PDB entry.

We welcome your comments at [validation@mail.wwpdb.org](mailto:validation@mail.wwpdb.org)

A user guide is available at

<https://www.wwpdb.org/validation/2017/XrayValidationReportHelp>

with specific help available everywhere you see the ⓘ symbol.

The types of validation reports are described at

<http://www.wwpdb.org/validation/2017/FAQs#types>.

---

The following versions of software and data (see [references ⓘ](#)) were used in the production of this report:

MolProbity : 4.02b-467  
Mogul : 1.8.4, CSD as541be (2020)  
Xtriage (Phenix) : 1.13  
EDS : 3.0  
buster-report : 1.1.7 (2018)  
Percentile statistics : 20231227.v01 (using entries in the PDB archive December 27th 2023)  
CCP4 : 9.0.003 (Gargrove)  
Density-Fitness : 1.0.11  
Ideal geometry (proteins) : Engh & Huber (2001)  
Ideal geometry (DNA, RNA) : Parkinson et al. (1996)  
Validation Pipeline (wwPDB-VP) : 2.39

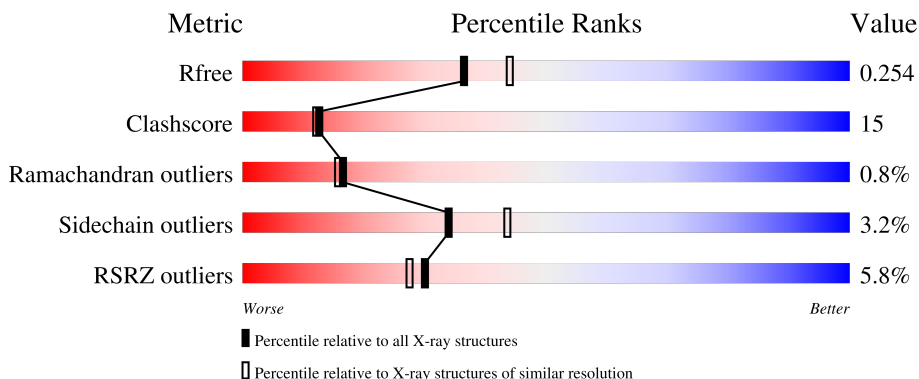
# 1 Overall quality at a glance

The following experimental techniques were used to determine the structure:

*X-RAY DIFFRACTION*



The reported resolution of this entry is 2.21 Å.

Percentile scores (ranging between 0-100) for global validation metrics of the entry are shown in the following graphic. The table shows the number of entries on which the scores are based.



Metric	Whole archive (#Entries)	Similar resolution (#Entries, resolution range(Å))
$R_{free}$	164625	7167 (2.24-2.20)
Clashscore	180529	8096 (2.24-2.20)
Ramachandran outliers	177936	8010 (2.24-2.20)
Sidechain outliers	177891	8011 (2.24-2.20)
RSRZ outliers	164620	7166 (2.24-2.20)

The table below summarises the geometric issues observed across the polymeric chains and their fit to the electron density. The red, orange, yellow and green segments of the lower bar indicate the fraction of residues that contain outliers for  $\geq 3$ , 2, 1 and 0 types of geometric quality criteria respectively. A grey segment represents the fraction of residues that are not modelled. The numeric value for each fraction is indicated below the corresponding segment, with a dot representing fractions  $\leq 5\%$ . The upper red bar (where present) indicates the fraction of residues that have poor fit to the electron density. The numeric value is given above the bar.

Mol	Chain	Length	Quality of chain
1	A	375	 3% 77% 22% .
1	B	375	 8% 72% 25% .

## 2 Entry composition [i](#)

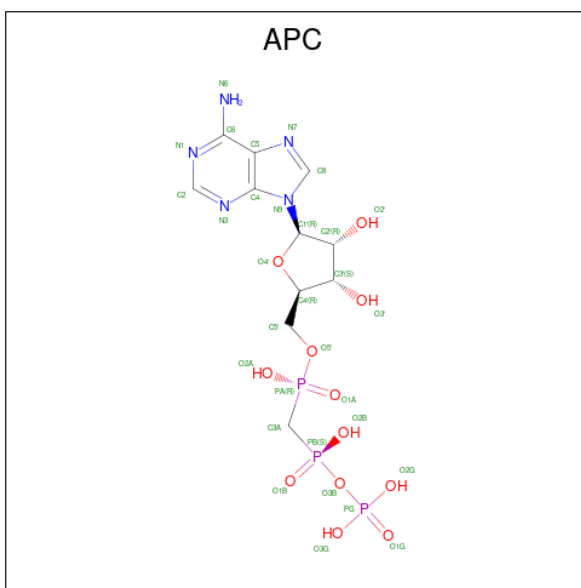
There are 6 unique types of molecules in this entry. The entry contains 6929 atoms, of which 0 are hydrogens and 0 are deuteriums.

In the tables below, the ZeroOcc column contains the number of atoms modelled with zero occupancy, the AltConf column contains the number of residues with at least one atom in alternate conformation and the Trace column contains the number of residues modelled with at most 2 atoms.

- Molecule 1 is a protein called RNA LIGASE.

Mol	Chain	Residues	Atoms					ZeroOcc	AltConf	Trace	
			Total	C	N	O	S				Se
1	A	375	Total 3064	C 1951	N 499	O 594	S 5	Se 15	0	0	0
1	B	375	Total 3064	C 1951	N 499	O 594	S 5	Se 15	0	0	0

- Molecule 2 is DIPHOSPHOMETHYLPHOSPHONIC ACID ADENOSYL ESTER (three-letter code: APC) (formula: C<sub>11</sub>H<sub>18</sub>N<sub>5</sub>O<sub>12</sub>P<sub>3</sub>).



Mol	Chain	Residues	Atoms					ZeroOcc	AltConf
			Total	C	N	O	P		
2	A	1	Total 31	C 11	N 5	O 12	P 3	0	0
2	B	1	Total 31	C 11	N 5	O 12	P 3	0	0

- Molecule 3 is CALCIUM ION (three-letter code: CA) (formula: Ca).

Mol	Chain	Residues	Atoms	ZeroOcc	AltConf
3	A	1	Total Ca 1 1	0	0
3	B	3	Total Ca 3 3	0	0

- Molecule 4 is MAGNESIUM ION (three-letter code: MG) (formula: Mg).

Mol	Chain	Residues	Atoms	ZeroOcc	AltConf
4	A	1	Total Mg 1 1	0	0
4	B	1	Total Mg 1 1	0	0

- Molecule 5 is CHLORIDE ION (three-letter code: CL) (formula: Cl).

Mol	Chain	Residues	Atoms	ZeroOcc	AltConf
5	A	2	Total Cl 2 2	0	0
5	B	1	Total Cl 1 1	0	0

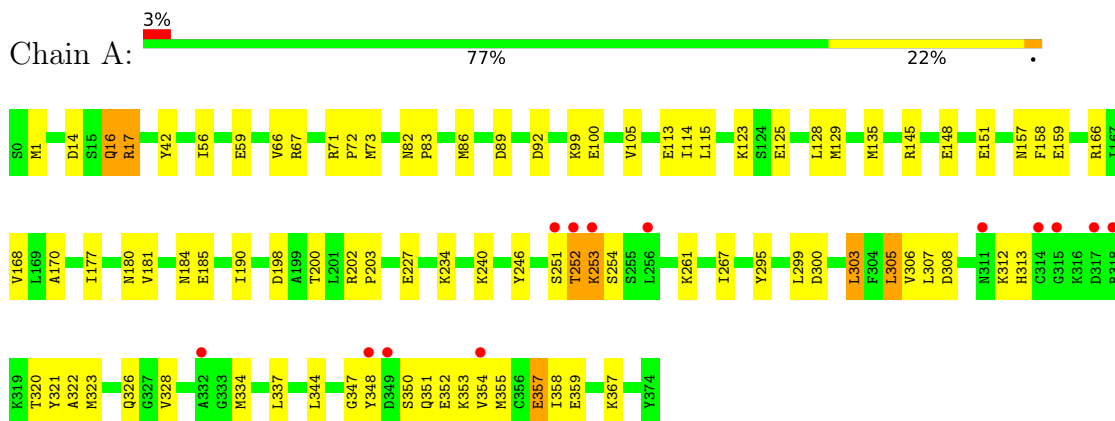
- Molecule 6 is water.

Mol	Chain	Residues	Atoms	ZeroOcc	AltConf
6	A	372	Total O 372 372	0	0
6	B	358	Total O 358 358	0	0

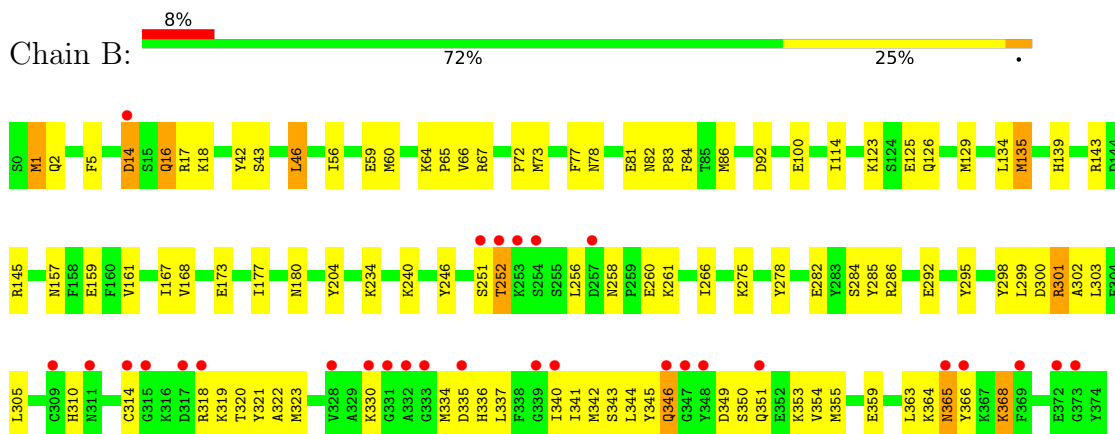
### 3 Residue-property plots

These plots are drawn for all protein, RNA, DNA and oligosaccharide chains in the entry. The first graphic for a chain summarises the proportions of the various outlier classes displayed in the second graphic. The second graphic shows the sequence view annotated by issues in geometry and electron density. Residues are color-coded according to the number of geometric quality criteria for which they contain at least one outlier: green = 0, yellow = 1, orange = 2 and red = 3 or more. A red dot above a residue indicates a poor fit to the electron density ( $RSRZ > 2$ ). Stretches of 2 or more consecutive residues without any outlier are shown as a green connector. Residues present in the sample, but not in the model, are shown in grey.

#### • Molecule 1: RNA LIGASE



#### • Molecule 1: RNA LIGASE



## 4 Data and refinement statistics i

Property	Value	Source
Space group	P 1 21 1	Depositor
Cell constants a, b, c, $\alpha$ , $\beta$ , $\gamma$	105.05Å 39.87Å 108.54Å 90.00° 117.27° 90.00°	Depositor
Resolution (Å)	27.78 – 2.21 27.78 – 2.21	Depositor EDS
% Data completeness (in resolution range)	99.5 (27.78-2.21) 99.8 (27.78-2.21)	Depositor EDS
$R_{merge}$	0.06	Depositor
$R_{sym}$	(Not available)	Depositor
$\langle I/\sigma(I) \rangle$ <sup>1</sup>	5.10 (at 2.22Å)	Xtrriage
Refinement program	CNS 1.1	Depositor
R, $R_{free}$	0.198 , 0.258 0.192 , 0.254	Depositor DCC
$R_{free}$ test set	2044 reflections (5.02%)	wwPDB-VP
Wilson B-factor (Å <sup>2</sup> )	21.9	Xtrriage
Anisotropy	0.247	Xtrriage
Bulk solvent $k_{sol}$ (e/Å <sup>3</sup> ), $B_{sol}$ (Å <sup>2</sup> )	0.34 , 55.7	EDS
L-test for twinning <sup>2</sup>	$\langle  L  \rangle = 0.49$ , $\langle L^2 \rangle = 0.33$	Xtrriage
Estimated twinning fraction	0.017 for h,-k,-h-l	Xtrriage
$F_o, F_c$ correlation	0.95	EDS
Total number of atoms	6929	wwPDB-VP
Average B, all atoms (Å <sup>2</sup> )	31.0	wwPDB-VP

Xtrriage's analysis on translational NCS is as follows: *The analyses of the Patterson function reveals a significant off-origin peak that is 53.22 % of the origin peak, indicating pseudo-translational symmetry. The chance of finding a peak of this or larger height randomly in a structure without pseudo-translational symmetry is equal to 4.3484e-05. The detected translational NCS is most likely also responsible for the elevated intensity ratio.*

<sup>1</sup>Intensities estimated from amplitudes.

<sup>2</sup>Theoretical values of  $\langle |L| \rangle$ ,  $\langle L^2 \rangle$  for acentric reflections are 0.5, 0.333 respectively for untwinned datasets, and 0.375, 0.2 for perfectly twinned datasets.

## 5 Model quality [i](#)

### 5.1 Standard geometry [i](#)

Bond lengths and bond angles in the following residue types are not validated in this section: CL, APC, CA, MG

The Z score for a bond length (or angle) is the number of standard deviations the observed value is removed from the expected value. A bond length (or angle) with  $|Z| > 5$  is considered an outlier worth inspection. RMSZ is the root-mean-square of all Z scores of the bond lengths (or angles).

Mol	Chain	Bond lengths		Bond angles	
		RMSZ	# Z  >5	RMSZ	# Z  >5
1	A	0.34	0/3114	0.59	0/4167
1	B	0.35	0/3114	0.57	0/4167
All	All	0.34	0/6228	0.58	0/8334

There are no bond length outliers.

There are no bond angle outliers.

There are no chirality outliers.

There are no planarity outliers.

### 5.2 Too-close contacts [i](#)

In the following table, the Non-H and H(model) columns list the number of non-hydrogen atoms and hydrogen atoms in the chain respectively. The H(added) column lists the number of hydrogen atoms added and optimized by MolProbity. The Clashes column lists the number of clashes within the asymmetric unit, whereas Symm-Clashes lists symmetry-related clashes.

Mol	Chain	Non-H	H(model)	H(added)	Clashes	Symm-Clashes
1	A	3064	0	2972	79	0
1	B	3064	0	2972	103	0
2	A	31	0	14	0	0
2	B	31	0	14	1	0
3	A	1	0	0	0	0
3	B	3	0	0	0	0
4	A	1	0	0	0	0
4	B	1	0	0	0	0
5	A	2	0	0	0	0
5	B	1	0	0	0	0
6	A	372	0	0	4	0

*Continued on next page...*

*Continued from previous page...*

Mol	Chain	Non-H	H(model)	H(added)	Clashes	Symm-Clashes
6	B	358	0	0	9	0
All	All	6929	0	5972	182	0

The all-atom clashscore is defined as the number of clashes found per 1000 atoms (including hydrogen atoms). The all-atom clashscore for this structure is 15.

All (182) close contacts within the same asymmetric unit are listed below, sorted by their clash magnitude.

Atom-1	Atom-2	Interatomic distance (Å)	Clash overlap (Å)
1:B:258:ASN:HD22	1:B:261:LYS:HG2	1.13	1.12
1:A:253:LYS:HD2	1:A:261:LYS:HD2	1.38	1.04
1:B:368:LYS:H	1:B:368:LYS:HD2	1.33	0.92
1:A:334:MSE:HG2	1:A:337:LEU:HD12	1.55	0.86
1:A:253:LYS:HE2	1:A:253:LYS:H	1.40	0.86
1:B:1:MSE:HE1	1:B:67:ARG:HA	1.56	0.86
1:B:258:ASN:ND2	1:B:261:LYS:HG2	1.94	0.83
1:B:1:MSE:CE	1:B:67:ARG:HA	2.09	0.83
1:B:320:THR:HA	1:B:323:MSE:HE3	1.62	0.82
1:A:303:LEU:HD22	1:A:358:ILE:HD12	1.63	0.81
1:A:1:MSE:HE2	1:A:67:ARG:HA	1.63	0.79
1:A:253:LYS:HE3	1:A:261:LYS:HB3	1.64	0.79
1:A:252:THR:HG21	6:A:2296:HOH:O	1.81	0.78
1:B:125:GLU:HG2	1:B:129:MSE:HE2	1.66	0.78
1:B:355:MSE:O	1:B:359:GLU:HG3	1.85	0.76
1:B:340:ILE:O	1:B:344:LEU:HG	1.86	0.76
1:A:16:GLN:HG3	1:A:351:GLN:NE2	2.02	0.75
1:A:100:GLU:HB3	1:A:159:GLU:HG2	1.71	0.72
1:B:1:MSE:HE1	1:B:67:ARG:CA	2.20	0.72
1:A:100:GLU:HG2	1:A:177:ILE:HD12	1.72	0.72
1:A:355:MSE:O	1:A:359:GLU:HG3	1.89	0.72
1:B:139:HIS:HD2	1:B:204:TYR:OH	1.73	0.71
1:B:16:GLN:H	1:B:16:GLN:CD	1.94	0.70
1:B:364:LYS:C	1:B:365:ASN:HD22	1.94	0.70
1:B:17:ARG:HG3	1:B:299:LEU:HD13	1.71	0.70
1:A:17:ARG:HD3	1:A:300:ASP:OD1	1.91	0.69
1:B:157:ASN:HD22	1:B:180:ASN:ND2	1.91	0.69
1:A:252:THR:HB	1:A:253:LYS:NZ	2.08	0.68
1:B:258:ASN:HD22	1:B:261:LYS:CG	1.98	0.68
1:B:365:ASN:HD22	1:B:365:ASN:N	1.92	0.68
1:A:254:SER:HB2	6:A:2297:HOH:O	1.95	0.67
1:B:17:ARG:HD3	1:B:300:ASP:OD1	1.94	0.66

*Continued on next page...*



*Continued from previous page...*

Atom-1	Atom-2	Interatomic distance (Å)	Clash overlap (Å)
1:B:157:ASN:HD22	1:B:180:ASN:HD21	1.40	0.66
1:A:123:LYS:HA	1:A:128:LEU:HD11	1.78	0.66
1:A:348:TYR:OH	1:A:357:GLU:HG2	1.96	0.65
1:B:319:LYS:HE3	1:B:323:MSE:HE2	1.78	0.65
1:B:92:ASP:HA	1:B:234:LYS:NZ	2.11	0.65
1:B:16:GLN:NE2	1:B:351:GLN:HE21	1.95	0.65
1:A:322:ALA:O	1:A:326:GLN:HG3	1.97	0.64
1:A:350:SER:C	1:A:352:GLU:H	1.98	0.64
1:B:303:LEU:HD21	1:B:355:MSE:HE2	1.78	0.64
1:A:168:VAL:HB	1:A:246:TYR:CE1	2.33	0.64
1:B:177:ILE:HD12	6:B:2196:HOH:O	1.98	0.64
1:B:330:LYS:HG3	6:B:2336:HOH:O	1.99	0.63
1:A:123:LYS:HA	1:A:128:LEU:CD1	2.30	0.62
1:B:82:ASN:O	1:B:86:MSE:HG3	2.01	0.61
1:A:252:THR:HG22	1:A:253:LYS:HD3	1.82	0.61
1:A:157:ASN:HD22	1:A:180:ASN:ND2	1.99	0.61
1:B:301:ARG:HD3	1:B:334:MSE:SE	2.50	0.61
1:B:16:GLN:HE21	1:B:351:GLN:HE21	1.50	0.59
1:B:365:ASN:N	1:B:365:ASN:ND2	2.50	0.59
1:A:166:ARG:CZ	1:A:170:ALA:HB2	2.32	0.59
1:B:301:ARG:HG2	1:B:302:ALA:N	2.18	0.59
1:A:303:LEU:HD22	1:A:358:ILE:CD1	2.32	0.58
1:B:310:HIS:O	1:B:314:CYS:HB2	2.02	0.58
1:A:59:GLU:O	1:A:66:VAL:HG22	2.03	0.58
1:B:303:LEU:CD2	1:B:355:MSE:HE2	2.33	0.58
1:B:159:GLU:HB3	6:B:2196:HOH:O	2.04	0.58
1:B:363:LEU:O	1:B:366:TYR:HD2	1.87	0.58
1:B:330:LYS:HB2	6:B:2330:HOH:O	2.03	0.57
1:A:148:GLU:HA	1:A:151:GLU:HG2	1.87	0.57
1:A:350:SER:C	1:A:352:GLU:N	2.58	0.57
1:B:42:TYR:CZ	1:B:83:PRO:HB2	2.40	0.57
1:B:251:SER:O	1:B:252:THR:HG23	2.03	0.56
1:A:92:ASP:O	1:A:234:LYS:HG2	2.05	0.55
1:A:253:LYS:CD	1:A:261:LYS:HD2	2.25	0.55
1:B:282:GLU:HG3	1:B:286:ARG:CZ	2.36	0.55
1:A:252:THR:CG2	1:A:253:LYS:HD3	2.36	0.55
1:A:303:LEU:O	1:A:307:LEU:HG	2.06	0.55
1:B:167:ILE:HD12	1:B:167:ILE:N	2.22	0.55
1:B:59:GLU:HB3	1:B:66:VAL:CG2	2.37	0.54
1:A:89:ASP:HB3	1:A:92:ASP:OD2	2.08	0.54
1:A:299:LEU:O	1:A:303:LEU:HB2	2.07	0.54

*Continued on next page...*

*Continued from previous page...*

Atom-1	Atom-2	Interatomic distance (Å)	Clash overlap (Å)
1:A:157:ASN:HD22	1:A:180:ASN:HD21	1.55	0.53
1:A:125:GLU:O	1:A:129:MSE:HG3	2.09	0.53
1:A:17:ARG:HG3	1:A:299:LEU:HD23	1.91	0.53
1:B:134:LEU:O	1:B:143:ARG:HD3	2.07	0.53
1:B:16:GLN:NE2	1:B:351:GLN:NE2	2.56	0.53
1:B:365:ASN:O	1:B:368:LYS:HD3	2.08	0.53
1:A:16:GLN:HB2	1:A:351:GLN:HE21	1.73	0.52
1:A:305:LEU:CD2	1:A:328:VAL:HG12	2.38	0.52
1:B:143:ARG:NH1	6:B:2184:HOH:O	2.43	0.52
1:A:348:TYR:CD2	1:A:354:VAL:HG22	2.45	0.52
1:B:59:GLU:HB3	1:B:66:VAL:HG22	1.92	0.52
1:A:42:TYR:CZ	1:A:83:PRO:HB2	2.45	0.51
1:B:64:LYS:HD2	1:B:65:PRO:HD2	1.92	0.51
1:A:100:GLU:HG2	1:A:177:ILE:CD1	2.39	0.51
1:B:368:LYS:H	1:B:368:LYS:CD	2.15	0.51
1:A:82:ASN:O	1:A:86:MSE:HG3	2.10	0.50
1:A:252:THR:HB	1:A:253:LYS:CE	2.42	0.50
1:B:342:MSE:O	1:B:345:TYR:N	2.32	0.50
1:B:251:SER:O	1:B:252:THR:OG1	2.25	0.50
1:B:16:GLN:HB2	1:B:355:MSE:HE1	1.94	0.50
1:B:16:GLN:HG2	1:B:351:GLN:NE2	2.27	0.49
1:B:346:GLN:O	1:B:346:GLN:NE2	2.44	0.49
1:A:251:SER:O	1:A:252:THR:CB	2.60	0.49
1:A:334:MSE:CG	1:A:337:LEU:HD12	2.33	0.49
1:A:267:ILE:HG12	1:A:295:TYR:CZ	2.47	0.49
1:B:135:MSE:HA	1:B:143:ARG:HH11	1.77	0.49
1:A:113:GLU:HG3	6:A:2161:HOH:O	2.11	0.49
1:A:308:ASP:OD1	1:A:312:LYS:HE3	2.13	0.48
1:A:320:THR:HA	1:A:323:MSE:HE3	1.95	0.48
1:B:135:MSE:HE1	6:B:2164:HOH:O	2.12	0.48
1:B:299:LEU:HD23	1:B:299:LEU:O	2.14	0.48
1:B:43:SER:HA	1:B:46:LEU:HD22	1.95	0.48
1:B:298:TYR:CE2	1:B:334:MSE:HE1	2.49	0.48
1:A:114:ILE:HG23	1:A:114:ILE:O	2.14	0.48
1:B:173:GLU:HG2	6:B:2212:HOH:O	2.14	0.48
1:A:252:THR:HB	1:A:253:LYS:HZ3	1.79	0.47
1:B:73:MSE:H	1:B:73:MSE:SE	2.47	0.47
1:B:92:ASP:HA	1:B:234:LYS:HZ3	1.79	0.47
1:B:100:GLU:O	2:B:1375:APC:H8	2.15	0.47
1:A:253:LYS:H	1:A:253:LYS:CE	2.19	0.47
1:B:17:ARG:HH21	1:B:18:LYS:HG3	1.79	0.47

*Continued on next page...*

*Continued from previous page...*

Atom-1	Atom-2	Interatomic distance (Å)	Clash overlap (Å)
1:B:59:GLU:O	1:B:66:VAL:HG22	2.15	0.46
1:A:59:GLU:HB3	1:A:66:VAL:CG2	2.45	0.46
1:B:82:ASN:OD1	1:B:84:PHE:HB2	2.15	0.46
1:B:92:ASP:HA	1:B:234:LYS:HZ2	1.80	0.46
1:B:17:ARG:CG	1:B:299:LEU:HD13	2.42	0.46
1:A:344:LEU:HD21	1:A:354:VAL:HG22	1.97	0.46
1:B:1:MSE:HE2	1:B:67:ARG:HA	1.96	0.46
1:B:256:LEU:HD12	1:B:278:TYR:CZ	2.51	0.46
1:A:198:ASP:OD1	1:A:200:THR:HB	2.15	0.46
1:A:305:LEU:HD21	1:A:328:VAL:HG12	1.97	0.45
1:A:253:LYS:HG2	1:A:254:SER:N	2.30	0.45
1:B:1:MSE:HE1	1:B:67:ARG:N	2.31	0.45
1:B:301:ARG:HH11	1:B:334:MSE:SE	2.49	0.45
1:A:306:VAL:HG23	1:A:307:LEU:N	2.32	0.45
1:B:251:SER:O	1:B:252:THR:CB	2.63	0.45
1:A:313:HIS:O	1:A:321:TYR:HD1	2.00	0.45
1:B:350:SER:O	1:B:354:VAL:HG23	2.17	0.45
1:B:16:GLN:OE1	1:B:16:GLN:N	2.50	0.44
1:B:266:ILE:HD13	1:B:292:GLU:HA	1.99	0.44
1:B:301:ARG:HD2	6:B:2325:HOH:O	2.17	0.44
1:B:5:PHE:CZ	1:B:60:MSE:HE1	2.52	0.44
1:B:82:ASN:HB2	1:B:83:PRO:HD2	2.00	0.44
1:B:321:TYR:OH	1:B:341:ILE:O	2.24	0.44
1:A:367:LYS:HB2	6:A:2360:HOH:O	2.16	0.44
1:B:1:MSE:HG3	1:B:2:GLN:N	2.32	0.44
1:B:16:GLN:CD	1:B:16:GLN:N	2.67	0.44
1:B:275:LYS:HG2	1:B:285:TYR:CE2	2.53	0.43
1:B:334:MSE:HB3	1:B:337:LEU:HD12	2.00	0.43
1:A:16:GLN:HB3	1:A:355:MSE:HE1	2.00	0.43
1:A:16:GLN:HB2	1:A:351:GLN:NE2	2.33	0.43
1:B:126:GLN:HA	1:B:129:MSE:HE3	2.00	0.43
1:A:148:GLU:O	1:A:151:GLU:HG2	2.18	0.43
1:A:202:ARG:HB3	1:A:203:PRO:HD3	2.00	0.43
1:A:82:ASN:HB2	1:A:83:PRO:CD	2.49	0.43
1:A:166:ARG:NH2	1:A:170:ALA:HB2	2.33	0.43
1:B:168:VAL:HB	1:B:246:TYR:CE1	2.54	0.43
1:A:73:MSE:H	1:A:73:MSE:SE	2.52	0.43
1:B:78:ASN:ND2	1:B:240:LYS:HG3	2.35	0.42
1:A:135:MSE:O	1:A:135:MSE:HG2	2.18	0.42
1:A:253:LYS:CD	1:A:253:LYS:N	2.82	0.42
1:B:334:MSE:HE2	1:B:336:HIS:HE1	1.84	0.42

*Continued on next page...*

Continued from previous page...

Atom-1	Atom-2	Interatomic distance (Å)	Clash overlap (Å)
1:A:71:ARG:NH1	1:A:184:ASN:O	2.52	0.42
1:A:105:VAL:HG23	1:A:158:PHE:HB2	2.02	0.42
1:A:56:ILE:HA	1:A:72:PRO:HD2	2.01	0.42
1:B:295:TYR:OH	1:B:359:GLU:HG2	2.19	0.42
1:B:318:ARG:HB2	1:B:345:TYR:CE2	2.54	0.42
1:B:342:MSE:O	1:B:344:LEU:N	2.53	0.42
1:B:342:MSE:C	1:B:344:LEU:N	2.72	0.42
1:B:56:ILE:HA	1:B:72:PRO:HD2	2.02	0.42
1:B:82:ASN:HB2	1:B:83:PRO:CD	2.49	0.42
1:A:99:LYS:HE3	1:A:240:LYS:HD2	2.02	0.41
1:B:161:VAL:HG13	6:B:2196:HOH:O	2.19	0.41
1:B:251:SER:O	1:B:252:THR:CG2	2.67	0.41
1:B:114:ILE:O	1:B:114:ILE:HG23	2.20	0.41
1:A:82:ASN:HB2	1:A:83:PRO:HD2	2.02	0.41
1:A:344:LEU:HD21	1:A:354:VAL:CG2	2.51	0.41
1:B:17:ARG:HG3	1:B:299:LEU:HD22	2.03	0.41
1:B:123:LYS:HE2	1:B:123:LYS:HB3	1.91	0.41
1:B:322:ALA:HA	1:B:342:MSE:SE	2.71	0.41
1:B:349:ASP:HB3	1:B:353:LYS:HD2	2.02	0.41
1:A:181:VAL:HG11	1:A:190:ILE:HD12	2.03	0.41
1:B:77:PHE:HB3	1:B:81:GLU:OE2	2.20	0.40
1:B:256:LEU:HD11	1:B:284:SER:HB3	2.02	0.40
1:B:301:ARG:O	1:B:305:LEU:HD13	2.20	0.40
1:A:227:GLU:HG3	1:A:246:TYR:CE2	2.56	0.40
1:A:227:GLU:HG3	1:A:246:TYR:CD2	2.57	0.40
1:B:260:GLU:HB2	1:B:366:TYR:CZ	2.57	0.40
1:A:303:LEU:CD2	1:A:358:ILE:HD12	2.40	0.40

There are no symmetry-related clashes.

## 5.3 Torsion angles [i](#)

### 5.3.1 Protein backbone [i](#)

In the following table, the Percentiles column shows the percent Ramachandran outliers of the chain as a percentile score with respect to all X-ray entries followed by that with respect to entries of similar resolution.

The Analysed column shows the number of residues for which the backbone conformation was analysed, and the total number of residues.

Mol	Chain	Analysed	Favoured	Allowed	Outliers	Percentiles	
1	A	373/375 (100%)	350 (94%)	20 (5%)	3 (1%)	16	16
1	B	373/375 (100%)	354 (95%)	16 (4%)	3 (1%)	16	16
All	All	746/750 (100%)	704 (94%)	36 (5%)	6 (1%)	16	16

All (6) Ramachandran outliers are listed below:

Mol	Chain	Res	Type
1	A	252	THR
1	B	252	THR
1	A	14	ASP
1	B	343	SER
1	B	14	ASP
1	A	347	GLY

### 5.3.2 Protein sidechains [i](#)

In the following table, the Percentiles column shows the percent sidechain outliers of the chain as a percentile score with respect to all X-ray entries followed by that with respect to entries of similar resolution.

The Analysed column shows the number of residues for which the sidechain conformation was analysed, and the total number of residues.

Mol	Chain	Analysed	Rotameric	Outliers	Percentiles	
1	A	333/318 (105%)	323 (97%)	10 (3%)	36	46
1	B	333/318 (105%)	322 (97%)	11 (3%)	33	42
All	All	666/636 (105%)	645 (97%)	21 (3%)	34	43

All (21) residues with a non-rotameric sidechain are listed below:

Mol	Chain	Res	Type
1	A	16	GLN
1	A	17	ARG
1	A	115	LEU
1	A	145	ARG
1	A	185	GLU
1	A	253	LYS
1	A	303	LEU
1	A	305	LEU
1	A	353	LYS
1	A	357	GLU

*Continued on next page...*

*Continued from previous page...*

Mol	Chain	Res	Type
1	B	1	MSE
1	B	14	ASP
1	B	16	GLN
1	B	46	LEU
1	B	135	MSE
1	B	145	ARG
1	B	301	ARG
1	B	335	ASP
1	B	346	GLN
1	B	365	ASN
1	B	368	LYS

Sometimes sidechains can be flipped to improve hydrogen bonding and reduce clashes. All (17) such sidechains are listed below:

Mol	Chain	Res	Type
1	A	2	GLN
1	A	6	ASN
1	A	16	GLN
1	A	78	ASN
1	A	138	ASN
1	A	165	ASN
1	A	180	ASN
1	A	222	ASN
1	A	351	GLN
1	B	78	ASN
1	B	139	HIS
1	B	180	ASN
1	B	250	HIS
1	B	258	ASN
1	B	346	GLN
1	B	351	GLN
1	B	365	ASN

### 5.3.3 RNA [i](#)

There are no RNA molecules in this entry.

## 5.4 Non-standard residues in protein, DNA, RNA chains [i](#)

There are no non-standard protein/DNA/RNA residues in this entry.

## 5.5 Carbohydrates [i](#)

There are no oligosaccharides in this entry.

## 5.6 Ligand geometry [i](#)

Of 11 ligands modelled in this entry, 9 are monoatomic - leaving 2 for Mogul analysis.

In the following table, the Counts columns list the number of bonds (or angles) for which Mogul statistics could be retrieved, the number of bonds (or angles) that are observed in the model and the number of bonds (or angles) that are defined in the Chemical Component Dictionary. The Link column lists molecule types, if any, to which the group is linked. The Z score for a bond length (or angle) is the number of standard deviations the observed value is removed from the expected value. A bond length (or angle) with  $|Z| > 2$  is considered an outlier worth inspection. RMSZ is the root-mean-square of all Z scores of the bond lengths (or angles).

Mol	Type	Chain	Res	Link	Bond lengths			Bond angles		
					Counts	RMSZ	# $ Z  > 2$	Counts	RMSZ	# $ Z  > 2$
2	APC	A	1375	4,3	27,33,33	1.87	5 (18%)	31,52,52	1.56	4 (12%)
2	APC	B	1375	4,3	27,33,33	1.77	5 (18%)	31,52,52	1.56	4 (12%)

In the following table, the Chirals column lists the number of chiral outliers, the number of chiral centers analysed, the number of these observed in the model and the number defined in the Chemical Component Dictionary. Similar counts are reported in the Torsion and Rings columns. '-' means no outliers of that kind were identified.

Mol	Type	Chain	Res	Link	Chirals	Torsions	Rings
2	APC	A	1375	4,3	-	4/15/38/38	0/3/3/3
2	APC	B	1375	4,3	-	3/15/38/38	0/3/3/3

All (10) bond length outliers are listed below:

Mol	Chain	Res	Type	Atoms	Z	Observed(Å)	Ideal(Å)
2	B	1375	APC	PB-O3B	5.23	1.64	1.58
2	A	1375	APC	PA-O5'	5.15	1.65	1.57
2	A	1375	APC	PB-O3B	5.11	1.64	1.58
2	B	1375	APC	PA-O5'	4.11	1.63	1.57
2	A	1375	APC	O4'-C1'	3.46	1.45	1.41
2	B	1375	APC	O4'-C1'	3.14	1.45	1.41
2	B	1375	APC	C8-N7	-2.42	1.30	1.34
2	A	1375	APC	C8-N7	-2.31	1.30	1.34
2	A	1375	APC	PB-O2B	2.18	1.61	1.56
2	B	1375	APC	PB-O2B	2.01	1.61	1.56

All (8) bond angle outliers are listed below:

Mol	Chain	Res	Type	Atoms	Z	Observed(°)	Ideal(°)
2	A	1375	APC	PB-O3B-PG	-5.48	113.33	132.62
2	B	1375	APC	PB-O3B-PG	-5.37	113.72	132.62
2	B	1375	APC	N3-C2-N1	-4.66	121.40	128.68
2	A	1375	APC	N3-C2-N1	-4.59	121.50	128.68
2	A	1375	APC	C4-C5-N7	-2.48	106.82	109.40
2	B	1375	APC	C3'-C2'-C1'	2.46	104.69	100.98
2	B	1375	APC	C4-C5-N7	-2.18	107.13	109.40
2	A	1375	APC	C3'-C2'-C1'	2.17	104.24	100.98

There are no chirality outliers.

All (7) torsion outliers are listed below:

Mol	Chain	Res	Type	Atoms
2	B	1375	APC	C4'-C5'-O5'-PA
2	A	1375	APC	C5'-O5'-PA-O1A
2	A	1375	APC	C5'-O5'-PA-C3A
2	B	1375	APC	C5'-O5'-PA-C3A
2	A	1375	APC	C4'-C5'-O5'-PA
2	B	1375	APC	C5'-O5'-PA-O1A
2	A	1375	APC	C3'-C4'-C5'-O5'

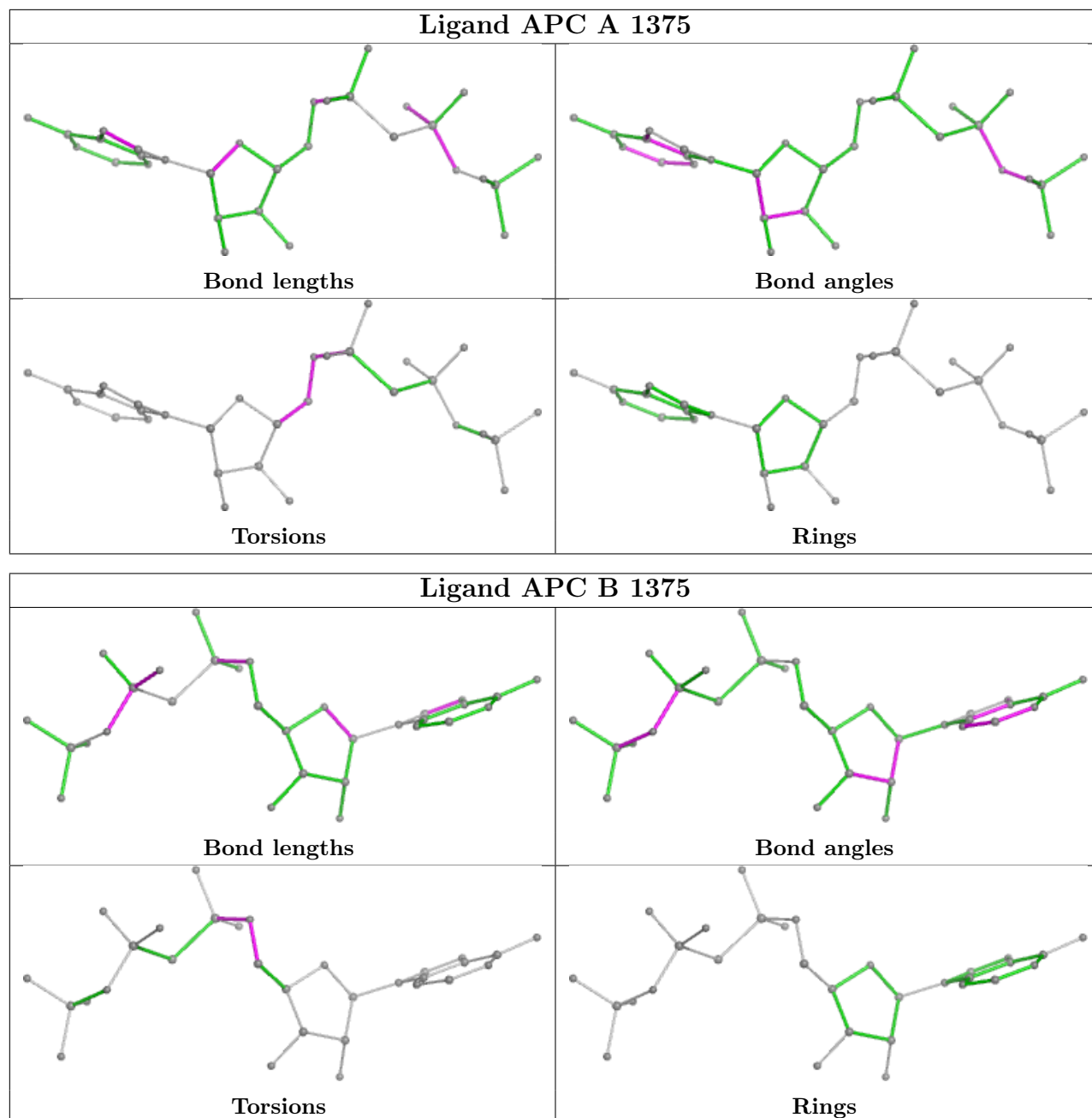
There are no ring outliers.

1 monomer is involved in 1 short contact:

Mol	Chain	Res	Type	Clashes	Symm-Clashes
2	B	1375	APC	1	0

The following is a two-dimensional graphical depiction of Mogul quality analysis of bond lengths, bond angles, torsion angles, and ring geometry for all instances of the Ligand of Interest. In addition, ligands with molecular weight > 250 and outliers as shown on the validation Tables will also be included. For torsion angles, if less than 5% of the Mogul distribution of torsion angles is within 10 degrees of the torsion angle in question, then that torsion angle is considered an outlier. Any bond that is central to one or more torsion angles identified as an outlier by Mogul will be highlighted in the graph. For rings, the root-mean-square deviation (RMSD) between the ring in question and similar rings identified by Mogul is calculated over all ring torsion angles. If the average RMSD is greater than 60 degrees and the minimal RMSD between the ring in question and any Mogul-identified rings is also greater than 60 degrees, then that ring is considered an outlier. The outliers are highlighted in purple. The color gray indicates Mogul did not find sufficient equivalents in the CSD to analyse the geometry.





## 5.7 Other polymers [\(i\)](#)

There are no such residues in this entry.

## 5.8 Polymer linkage issues [\(i\)](#)

There are no chain breaks in this entry.

## 6 Fit of model and data

### 6.1 Protein, DNA and RNA chains

In the following table, the column labelled ‘#RSRZ> 2’ contains the number (and percentage) of RSRZ outliers, followed by percent RSRZ outliers for the chain as percentile scores relative to all X-ray entries and entries of similar resolution. The OWAB column contains the minimum, median, 95<sup>th</sup> percentile and maximum values of the occupancy-weighted average B-factor per residue. The column labelled ‘Q< 0.9’ lists the number of (and percentage) of residues with an average occupancy less than 0.9.

Mol	Chain	Analysed	<RSRZ>	#RSRZ>2	OWAB(Å <sup>2</sup> )	Q<0.9
1	A	360/375 (96%)	-0.09	13 (3%) 46 43	10, 28, 61, 96	0
1	B	360/375 (96%)	-0.01	29 (8%) 19 17	11, 24, 70, 102	0
All	All	720/750 (96%)	-0.05	42 (5%) 30 27	10, 26, 66, 102	0

All (42) RSRZ outliers are listed below:

Mol	Chain	Res	Type	RSRZ
1	B	340	ILE	5.7
1	A	315	GLY	4.6
1	B	252	THR	4.6
1	B	311	ASN	4.2
1	B	314	CYS	4.0
1	B	333	GLY	4.0
1	B	315	GLY	4.0
1	B	339	GLY	3.8
1	A	314	CYS	3.7
1	B	335	ASP	3.6
1	B	331	GLY	3.4
1	A	252	THR	3.2
1	A	317	ASP	3.1
1	A	348	TYR	3.1
1	B	346	GLN	3.0
1	B	373	GLY	3.0
1	B	14	ASP	3.0
1	A	354	VAL	2.9
1	B	251	SER	2.9
1	B	317	ASP	2.9
1	B	348	TYR	2.8
1	A	253	LYS	2.7
1	A	349	ASP	2.6
1	B	257	ASP	2.6

*Continued on next page...*

*Continued from previous page...*

Mol	Chain	Res	Type	RSRZ
1	B	372	GLU	2.6
1	A	251	SER	2.6
1	B	253	LYS	2.5
1	A	256	LEU	2.4
1	B	328	VAL	2.4
1	B	330	LYS	2.3
1	B	351	GLN	2.3
1	A	318	ARG	2.3
1	B	332	ALA	2.2
1	B	318	ARG	2.2
1	B	366	TYR	2.2
1	B	365	ASN	2.2
1	B	369	PHE	2.1
1	B	347	GLY	2.1
1	B	309	CYS	2.1
1	A	311	ASN	2.1
1	A	332	ALA	2.1
1	B	254	SER	2.0

## 6.2 Non-standard residues in protein, DNA, RNA chains [i](#)

There are no non-standard protein/DNA/RNA residues in this entry.

## 6.3 Carbohydrates [i](#)

There are no monosaccharides in this entry.

## 6.4 Ligands [i](#)

In the following table, the Atoms column lists the number of modelled atoms in the group and the number defined in the chemical component dictionary. The B-factors column lists the minimum, median, 95<sup>th</sup> percentile and maximum values of B factors of atoms in the group. The column labelled 'Q< 0.9' lists the number of atoms with occupancy less than 0.9.

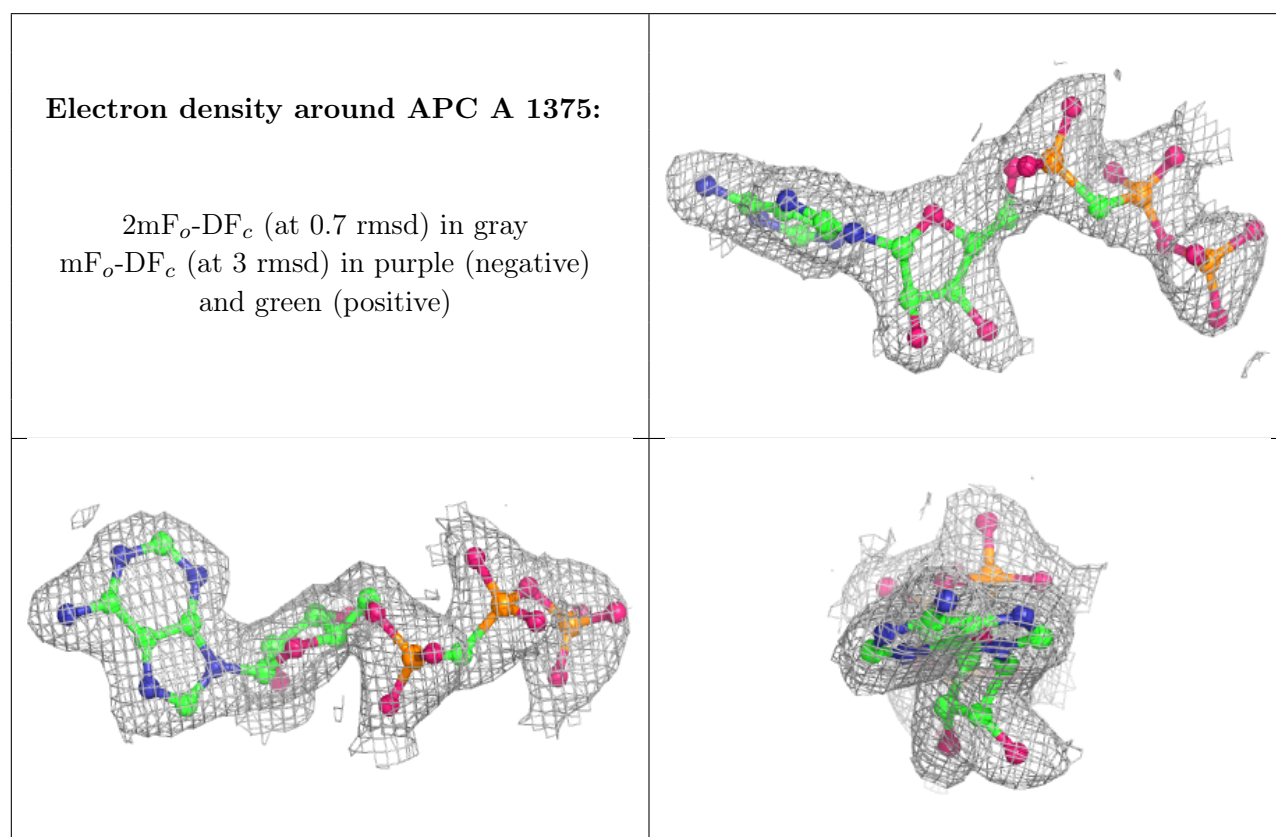
Mol	Type	Chain	Res	Atoms	RSCC	RSR	B-factors( $\text{\AA}^2$ )	Q<0.9
5	CL	A	1379	1/1	0.89	0.09	55,55,55,55	0
2	APC	A	1375	31/31	0.97	0.06	2,17,37,47	0
4	MG	B	1376	1/1	0.98	0.11	11,11,11,11	0
2	APC	B	1375	31/31	0.98	0.05	7,15,33,52	0
3	CA	B	1378	1/1	0.99	0.03	25,25,25,25	0

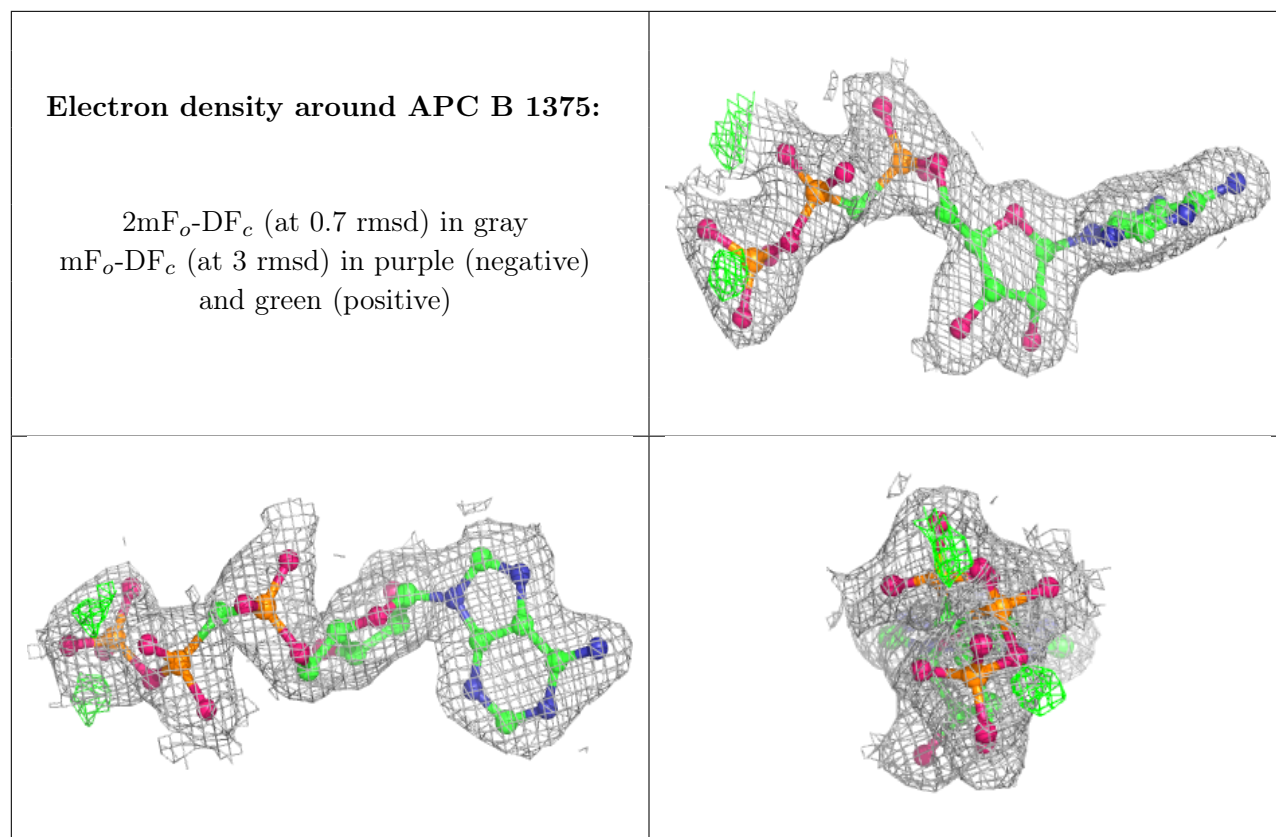
*Continued on next page...*

Continued from previous page...

Mol	Type	Chain	Res	Atoms	RSCC	RSR	B-factors( $\text{\AA}^2$ )	Q<0.9
3	CA	B	1379	1/1	0.99	0.03	23,23,23,23	0
4	MG	A	1377	1/1	0.99	0.03	11,11,11,11	0
3	CA	A	1376	1/1	0.99	0.04	22,22,22,22	0
5	CL	A	1378	1/1	0.99	0.03	24,24,24,24	0
3	CA	B	1377	1/1	0.99	0.02	20,20,20,20	0
5	CL	B	1380	1/1	0.99	0.06	20,20,20,20	0

The following is a graphical depiction of the model fit to experimental electron density of all instances of the Ligand of Interest. In addition, ligands with molecular weight > 250 and outliers as shown on the geometry validation Tables will also be included. Each fit is shown from different orientation to approximate a three-dimensional view.





## 6.5 Other polymers [i](#)

There are no such residues in this entry.