



Full wwPDB X-ray Structure Validation Report ⓘ

Apr 21, 2024 – 05:16 am BST

PDB ID : 2BO9
Title : Human carboxypeptidase A4 in complex with human latexin.
Authors : Pallares, I.; Bonet, R.; Garcia-Castellanos, R.; Ventura, S.; Aviles, F.X.; Vendrell, J.; Gomis-Rueth, F.X.
Deposited on : 2005-04-08
Resolution : 1.60 Å(reported)

This is a Full wwPDB X-ray Structure Validation Report for a publicly released PDB entry.

We welcome your comments at validation@mail.wwpdb.org

A user guide is available at

<https://www.wwpdb.org/validation/2017/XrayValidationReportHelp>

with specific help available everywhere you see the ⓘ symbol.

The types of validation reports are described at

<http://www.wwpdb.org/validation/2017/FAQs#types>.

The following versions of software and data (see [references ⓘ](#)) were used in the production of this report:

MolProbity : 4.02b-467
Mogul : 1.8.4, CSD as541be (2020)
Xtrriage (Phenix) : **NOT EXECUTED**
EDS : **NOT EXECUTED**
Percentile statistics : 20191225.v01 (using entries in the PDB archive December 25th 2019)
Ideal geometry (proteins) : Engh & Huber (2001)
Ideal geometry (DNA, RNA) : Parkinson et al. (1996)
Validation Pipeline (wwPDB-VP) : 2.36.2

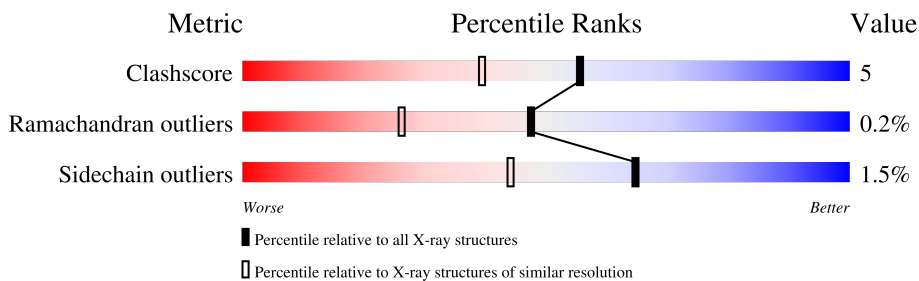
1 Overall quality at a glance

The following experimental techniques were used to determine the structure:

X-RAY DIFFRACTION

The reported resolution of this entry is 1.60 Å.

Percentile scores (ranging between 0-100) for global validation metrics of the entry are shown in the following graphic. The table shows the number of entries on which the scores are based.



Metric	Whole archive (#Entries)	Similar resolution (#Entries, resolution range(Å))
Clashscore	141614	3665 (1.60-1.60)
Ramachandran outliers	138981	3564 (1.60-1.60)
Sidechain outliers	138945	3563 (1.60-1.60)

The table below summarises the geometric issues observed across the polymeric chains and their fit to the electron density. The red, orange, yellow and green segments of the lower bar indicate the fraction of residues that contain outliers for ≥ 3 , 2, 1 and 0 types of geometric quality criteria respectively. A grey segment represents the fraction of residues that are not modelled. The numeric value for each fraction is indicated below the corresponding segment, with a dot representing fractions $\leq 5\%$.

Note EDS was not executed.

Mol	Chain	Length	Quality of chain
1	A	308	
1	C	308	
2	B	222	
2	D	222	

The following table lists non-polymeric compounds, carbohydrate monomers and non-standard residues in protein, DNA, RNA chains that are outliers for geometric or electron-density-fit criteria:

Mol	Type	Chain	Res	Chirality	Geometry	Clashes	Electron density
5	VAL	A	903	-	-	X	-

2 Entry composition [i](#)

There are 8 unique types of molecules in this entry. The entry contains 9751 atoms, of which 0 are hydrogens and 0 are deuteriums.

In the tables below, the ZeroOcc column contains the number of atoms modelled with zero occupancy, the AltConf column contains the number of residues with at least one atom in alternate conformation and the Trace column contains the number of residues modelled with at most 2 atoms.

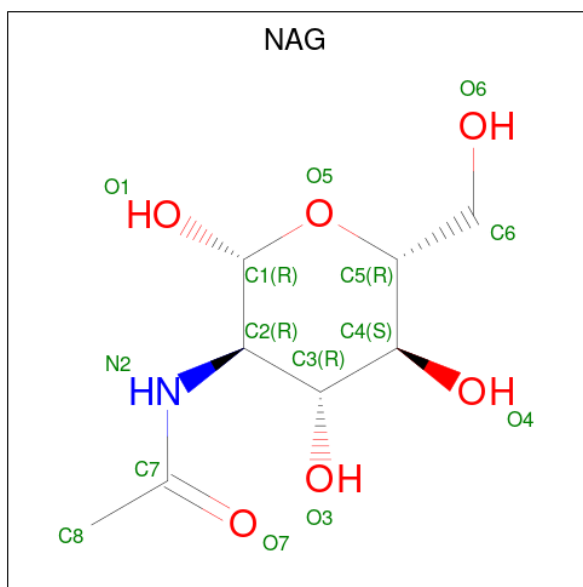
- Molecule 1 is a protein called CARBOXYPEPTIDASE A4.

Mol	Chain	Residues	Atoms					ZeroOcc	AltConf	Trace
			Total	C	N	O	S			
1	A	307	Total 2448	C 1554	N 426	O 458	S 10	0	6	0
1	C	307	Total 2443	C 1549	N 426	O 458	S 10	0	6	0

- Molecule 2 is a protein called HUMAN LATEXIN.

Mol	Chain	Residues	Atoms					ZeroOcc	AltConf	Trace
			Total	C	N	O	S			
2	B	217	Total 1783	C 1135	N 303	O 337	S 8	0	3	0
2	D	217	Total 1778	C 1133	N 302	O 335	S 8	0	1	0

- Molecule 3 is 2-acetamido-2-deoxy-beta-D-glucopyranose (three-letter code: NAG) (formula: C₈H₁₅NO₆).

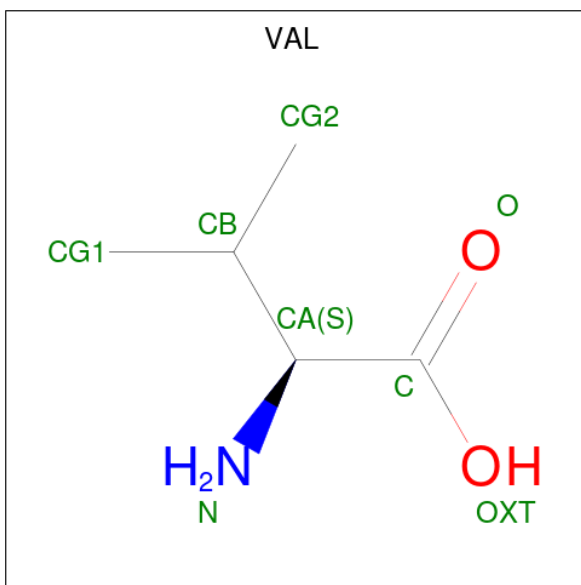


Mol	Chain	Residues	Atoms				ZeroOcc	AltConf
3	A	1	Total	C	N	O	0	0
			14	8	1	5		
3	C	1	Total	C	N	O	0	0
			14	8	1	5		

- Molecule 4 is ZINC ION (three-letter code: ZN) (formula: Zn).

Mol	Chain	Residues	Atoms		ZeroOcc	AltConf
4	A	1	Total	Zn	0	0
			1	1		
4	C	1	Total	Zn	0	0
			1	1		

- Molecule 5 is VALINE (three-letter code: VAL) (formula: C₅H₁₁NO₂).



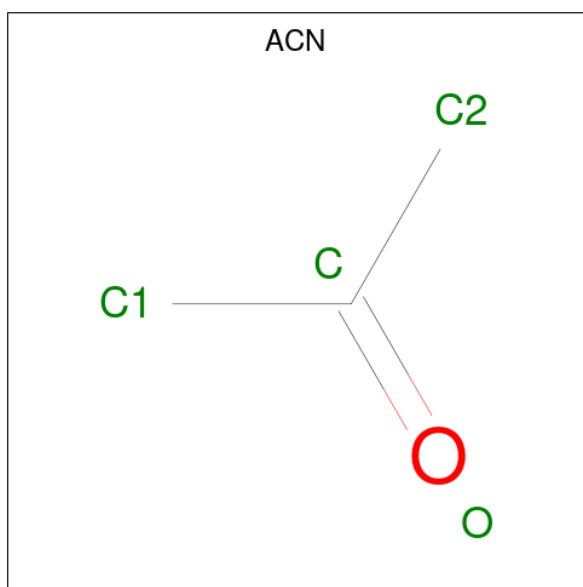
Mol	Chain	Residues	Atoms				ZeroOcc	AltConf
5	A	1	Total	C	N	O	0	0
			8	5	1	2		
5	C	1	Total	C	N	O	0	0
			8	5	1	2		

- Molecule 6 is (4S)-2-METHYL-2,4-PENTANEDIOL (three-letter code: MPD) (formula: C₆H₁₄O₂).



Mol	Chain	Residues	Atoms	ZeroOcc	AltConf
6	A	1	Total C O 8 6 2	0	0
6	A	1	Total C O 8 6 2	0	0
6	A	1	Total C O 8 6 2	0	0
6	B	1	Total C O 8 6 2	0	0
6	B	1	Total C O 8 6 2	0	0
6	B	1	Total C O 8 6 2	0	0
6	B	1	Total C O 8 6 2	0	0
6	C	1	Total C O 8 6 2	0	0
6	D	1	Total C O 8 6 2	0	0
6	D	1	Total C O 8 6 2	0	0
6	D	1	Total C O 8 6 2	0	0
6	D	1	Total C O 8 6 2	0	0

- Molecule 7 is ACETONE (three-letter code: ACN) (formula: C₃H₆O).



Mol	Chain	Residues	Atoms		ZeroOcc	AltConf
7	D	1	Total	C O	0	0
			4	3 1		

- Molecule 8 is water.

Mol	Chain	Residues	Atoms		ZeroOcc	AltConf
8	A	389	Total	O	0	0
			389	389		
8	B	225	Total	O	0	0
			225	225		
8	C	359	Total	O	0	0
			359	359		
8	D	180	Total	O	0	0
			180	180		

3 Residue-property plots [i](#)

These plots are drawn for all protein, RNA, DNA and oligosaccharide chains in the entry. The first graphic for a chain summarises the proportions of the various outlier classes displayed in the second graphic. The second graphic shows the sequence view annotated by issues in geometry. Residues are color-coded according to the number of geometric quality criteria for which they contain at least one outlier: green = 0, yellow = 1, orange = 2 and red = 3 or more. Stretches of 2 or more consecutive residues without any outlier are shown as a green connector. Residues present in the sample, but not in the model, are shown in grey.

Note EDS was not executed.

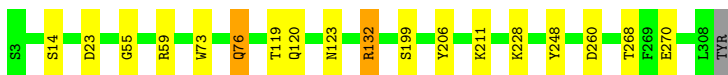
- Molecule 1: CARBOXYPEPTIDASE A4

Chain A:  92% 7%




- Molecule 1: CARBOXYPEPTIDASE A4

Chain C:  94% 5%




- Molecule 2: HUMAN LATEXIN

Chain B:  84% 12%



- Molecule 2: HUMAN LATEXIN

Chain D:  86% 11%



4 Data and refinement statistics

Xtrriage (Phenix) and EDS were not executed - this section is therefore incomplete.

Property	Value	Source
Space group	P 1 21 1	Depositor
Cell constants a, b, c, α , β , γ	78.92Å 96.65Å 92.36Å 90.00° 99.60° 90.00°	Depositor
Resolution (Å)	50.00 – 1.60	Depositor
% Data completeness (in resolution range)	99.8 (50.00-1.60)	Depositor
R_{merge}	0.07	Depositor
R_{sym}	(Not available)	Depositor
Refinement program	REFMAC 5.1.9999	Depositor
R, R_{free}	0.149 , 0.176	Depositor
Estimated twinning fraction	No twinning to report.	Xtrriage
Total number of atoms	9751	wwPDB-VP
Average B, all atoms (Å ²)	17.0	wwPDB-VP

5 Model quality [i](#)

5.1 Standard geometry [i](#)

Bond lengths and bond angles in the following residue types are not validated in this section: MPD, NAG, ACN, ZN

The Z score for a bond length (or angle) is the number of standard deviations the observed value is removed from the expected value. A bond length (or angle) with $|Z| > 5$ is considered an outlier worth inspection. RMSZ is the root-mean-square of all Z scores of the bond lengths (or angles).

Mol	Chain	Bond lengths		Bond angles	
		RMSZ	# Z >5	RMSZ	# Z >5
1	A	0.61	0/2542	0.76	1/3455 (0.0%)
1	C	0.59	0/2540	0.76	2/3452 (0.1%)
2	B	0.48	0/1842	0.72	5/2505 (0.2%)
2	D	0.45	0/1828	0.70	6/2486 (0.2%)
All	All	0.55	0/8752	0.74	14/11898 (0.1%)

There are no bond length outliers.

All (14) bond angle outliers are listed below:

Mol	Chain	Res	Type	Atoms	Z	Observed(°)	Ideal(°)
1	A	23	ASP	CB-CG-OD2	7.19	124.78	118.30
1	C	23	ASP	CB-CG-OD2	7.06	124.65	118.30
2	D	179	ASP	CB-CG-OD2	6.74	124.36	118.30
2	B	44	ASP	CB-CG-OD2	6.57	124.22	118.30
2	B	100	ASP	CB-CG-OD2	6.00	123.70	118.30
2	B	155[A]	ASP	CB-CG-OD2	5.99	123.69	118.30
2	B	155[B]	ASP	CB-CG-OD2	5.99	123.69	118.30
1	C	260	ASP	CB-CG-OD2	5.81	123.53	118.30
2	D	100	ASP	CB-CG-OD2	5.77	123.49	118.30
2	D	124	ASP	CB-CG-OD2	5.62	123.36	118.30
2	D	155[A]	ASP	CB-CG-OD2	5.46	123.22	118.30
2	D	155[B]	ASP	CB-CG-OD2	5.46	123.22	118.30
2	B	124	ASP	CB-CG-OD2	5.18	122.97	118.30
2	D	173	ASP	CB-CG-OD2	5.13	122.92	118.30

There are no chirality outliers.

There are no planarity outliers.

5.2 Too-close contacts [i](#)

In the following table, the Non-H and H(model) columns list the number of non-hydrogen atoms and hydrogen atoms in the chain respectively. The H(added) column lists the number of hydrogen atoms added and optimized by MolProbity. The Clashes column lists the number of clashes within the asymmetric unit, whereas Symm-Clashes lists symmetry-related clashes.

Mol	Chain	Non-H	H(model)	H(added)	Clashes	Symm-Clashes
1	A	2448	0	2354	21	0
1	C	2443	0	2360	13	0
2	B	1783	0	1741	21	0
2	D	1778	0	1738	18	0
3	A	14	0	13	0	0
3	C	14	0	13	0	0
4	A	1	0	0	0	0
4	C	1	0	0	0	0
5	A	8	0	8	4	0
5	C	8	0	8	3	0
6	A	24	0	42	1	0
6	B	32	0	56	6	0
6	C	8	0	14	0	0
6	D	32	0	56	4	0
7	D	4	0	6	1	0
8	A	389	0	0	7	0
8	B	225	0	0	3	0
8	C	359	0	0	5	0
8	D	180	0	0	3	0
All	All	9751	0	8409	87	0

The all-atom clashscore is defined as the number of clashes found per 1000 atoms (including hydrogen atoms). The all-atom clashscore for this structure is 5.

All (87) close contacts within the same asymmetric unit are listed below, sorted by their clash magnitude.

Atom-1	Atom-2	Interatomic distance (Å)	Clash overlap (Å)
2:B:53:ARG:HH11	2:B:53:ARG:HG3	1.25	1.00
6:D:303:MPD:HM2	8:D:471:HOH:O	1.70	0.92
8:A:1196:HOH:O	6:B:301:MPD:H53	1.72	0.89
8:C:639:HOH:O	6:D:303:MPD:H53	1.74	0.87
1:A:59:ARG:HD3	8:A:1271:HOH:O	1.74	0.86
6:B:301:MPD:H51	8:B:572:HOH:O	1.77	0.84
1:A:217:GLU:OE1	8:A:1001:HOH:O	1.95	0.82
1:A:133:ASN:O	1:A:136:SER:O	2.02	0.78

Continued on next page...

Continued from previous page...

Atom-1	Atom-2	Interatomic distance (Å)	Clash overlap (Å)
1:C:76:GLN:HE21	1:C:76:GLN:H	1.31	0.77
6:D:303:MPD:HM1	8:D:497:HOH:O	1.85	0.75
1:A:76:GLN:HE21	1:A:76:GLN:H	1.35	0.73
1:A:40[B]:HIS:HD2	1:A:41:SER:O	1.76	0.68
1:C:270:GLU:OE2	5:C:401:VAL:N	2.27	0.68
2:B:53:ARG:HH11	2:B:53:ARG:CG	2.03	0.67
8:A:1040:HOH:O	6:B:302:MPD:HM3	1.94	0.67
1:A:133:ASN:HB3	1:A:136:SER:HB3	1.78	0.66
6:D:303:MPD:H51	8:D:517:HOH:O	1.96	0.65
2:B:53:ARG:HG3	2:B:53:ARG:NH1	2.04	0.63
1:C:59[B]:ARG:NH2	8:C:502:HOH:O	2.33	0.62
1:A:270:GLU:OE2	5:A:903:VAL:N	2.33	0.61
1:C:76:GLN:H	1:C:76:GLN:NE2	1.99	0.60
2:B:202:HIS:HD2	2:B:204:GLN:H	1.48	0.59
6:A:906:MPD:O4	6:A:906:MPD:HM1	2.03	0.57
2:D:122:ILE:CD1	2:D:133:MET:HE2	2.35	0.56
5:C:401:VAL:N	8:C:503:HOH:O	2.38	0.55
2:D:122:ILE:HD13	2:D:133:MET:CE	2.36	0.55
1:A:76:GLN:H	1:A:76:GLN:NE2	2.02	0.54
2:B:53:ARG:CG	2:B:53:ARG:NH1	2.66	0.54
6:B:302:MPD:HM3	8:B:508:HOH:O	2.08	0.54
1:A:268:THR:HG21	5:A:903:VAL:HG22	1.90	0.54
2:B:1:MET:HG3	2:B:42:MET:O	2.08	0.53
2:D:192:ILE:O	2:D:217:LYS:HE3	2.08	0.53
2:B:110:LEU:HD13	2:B:176:ILE:HG21	1.90	0.53
2:D:122:ILE:HD13	2:D:133:MET:HE3	1.91	0.52
2:D:59:GLU:HG2	2:D:67:LYS:HG2	1.92	0.52
1:C:73:TRP:HA	1:C:76:GLN:NE2	2.25	0.52
1:A:123:ASN:ND2	1:A:125:LEU:H	2.08	0.51
1:A:206:TYR:CE1	1:A:211:LYS:HE3	2.46	0.51
1:C:73:TRP:HA	1:C:76:GLN:HE22	1.75	0.51
2:D:109:ARG:HB3	7:D:305:ACN:H13	1.91	0.51
1:C:268:THR:HG21	5:C:401:VAL:HG22	1.93	0.51
1:A:40[B]:HIS:CD2	1:A:41:SER:O	2.62	0.51
1:A:123:ASN:C	1:A:123:ASN:HD22	2.15	0.50
1:A:123:ASN:HD22	1:A:125:LEU:H	1.58	0.49
2:B:122:ILE:HD13	2:B:133:MET:HE2	1.94	0.49
2:D:51:LYS:HG2	2:D:53:ARG:NH1	2.28	0.49
5:A:903:VAL:N	8:A:1003:HOH:O	2.45	0.48
2:B:122:ILE:CD1	2:B:133:MET:HE2	2.43	0.48
2:B:202:HIS:CD2	2:B:204:GLN:H	2.30	0.48

Continued on next page...

Continued from previous page...

Atom-1	Atom-2	Interatomic distance (Å)	Clash overlap (Å)
1:C:206:TYR:CE1	1:C:211:LYS:HE3	2.47	0.48
2:D:122:ILE:HD11	2:D:133:MET:HE2	1.96	0.48
2:D:171:ARG:HD2	2:D:177:GLU:HB2	1.94	0.48
1:A:73:TRP:HA	1:A:76:GLN:NE2	2.29	0.48
1:C:132:ARG:NH2	8:C:505:HOH:O	2.39	0.47
6:B:302:MPD:HM2	8:B:519:HOH:O	2.14	0.47
1:A:90:TYR:CE2	1:A:91:GLN:HG3	2.49	0.47
2:B:29:HIS:HA	2:B:62:ILE:HG21	1.97	0.47
2:B:171:ARG:NH2	2:B:173:ASP:OD1	2.36	0.47
2:B:171:ARG:HD2	2:B:177:GLU:HB2	1.98	0.46
2:D:78:SER:HB2	2:D:81:GLN:HE21	1.81	0.46
1:C:55:GLY:HA3	1:C:59[A]:ARG:HD2	1.98	0.46
2:D:35:GLN:CG	2:D:59:GLU:HG3	2.47	0.45
2:D:133:MET:HE1	2:D:136:VAL:HG11	1.99	0.45
2:B:132:GLU:CD	2:B:132:GLU:H	2.19	0.45
2:D:108:GLN:HA	2:D:108:GLN:OE1	2.17	0.45
2:D:51:LYS:C	2:D:53:ARG:HH12	2.20	0.45
2:D:1:MET:HG3	2:D:42:MET:O	2.16	0.44
2:B:173:ASP:HB3	2:B:175:PHE:H	1.82	0.44
1:A:119:THR:HA	1:A:123:ASN:O	2.18	0.44
1:A:73:TRP:HA	1:A:76:GLN:HE22	1.82	0.43
1:A:88:SER:O	1:A:92:ARG:HD3	2.18	0.43
2:B:114:LYS:HG3	2:B:115:GLU:HG2	2.00	0.43
2:D:132:GLU:H	2:D:132:GLU:CD	2.22	0.43
1:C:119:THR:HA	1:C:123:ASN:O	2.19	0.43
1:C:228:LYS:NZ	8:C:510:HOH:O	2.51	0.43
2:B:134:THR:HG22	2:B:138:HIS:CE1	2.54	0.42
1:C:14:SER:HA	1:C:120:GLN:OE1	2.19	0.42
2:B:122:ILE:HD13	2:B:133:MET:CE	2.48	0.42
2:B:62:ILE:HD12	2:B:138:HIS:CE1	2.55	0.42
1:A:103[B]:MET:SD	1:A:304:VAL:HG12	2.60	0.42
1:A:233:VAL:HG21	1:A:292:GLU:HA	2.02	0.42
2:D:35:GLN:HG3	2:D:59:GLU:HG3	2.02	0.41
2:D:18:GLN:NE2	2:D:33:GLU:HA	2.35	0.41
5:A:903:VAL:HG21	8:A:1014:HOH:O	2.20	0.41
8:A:1040:HOH:O	6:B:302:MPD:CM	2.63	0.41
2:B:43:GLU:HG3	2:B:51:LYS:HB3	2.03	0.40
2:B:105:THR:O	2:B:109:ARG:HD3	2.22	0.40

There are no symmetry-related clashes.

5.3 Torsion angles [i](#)

5.3.1 Protein backbone [i](#)

In the following table, the Percentiles column shows the percent Ramachandran outliers of the chain as a percentile score with respect to all X-ray entries followed by that with respect to entries of similar resolution.

The Analysed column shows the number of residues for which the backbone conformation was analysed, and the total number of residues.

Mol	Chain	Analysed	Favoured	Allowed	Outliers	Percentiles	
1	A	311/308 (101%)	301 (97%)	9 (3%)	1 (0%)	41	21
1	C	310/308 (101%)	303 (98%)	6 (2%)	1 (0%)	41	21
2	B	218/222 (98%)	214 (98%)	4 (2%)	0	100	100
2	D	216/222 (97%)	211 (98%)	5 (2%)	0	100	100
All	All	1055/1060 (100%)	1029 (98%)	24 (2%)	2 (0%)	47	26

All (2) Ramachandran outliers are listed below:

Mol	Chain	Res	Type
1	A	199	SER
1	C	199	SER

5.3.2 Protein sidechains [i](#)

In the following table, the Percentiles column shows the percent sidechain outliers of the chain as a percentile score with respect to all X-ray entries followed by that with respect to entries of similar resolution.

The Analysed column shows the number of residues for which the sidechain conformation was analysed, and the total number of residues.

Mol	Chain	Analysed	Rotameric	Outliers	Percentiles	
1	A	263/258 (102%)	260 (99%)	3 (1%)	73	57
1	C	263/258 (102%)	260 (99%)	3 (1%)	73	57
2	B	199/201 (99%)	192 (96%)	7 (4%)	36	13
2	D	197/201 (98%)	196 (100%)	1 (0%)	88	80
All	All	922/918 (100%)	908 (98%)	14 (2%)	65	44

All (14) residues with a non-rotameric sidechain are listed below:

Mol	Chain	Res	Type
1	A	23	ASP
1	A	76	GLN
1	A	123	ASN
2	B	48	ARG
2	B	53	ARG
2	B	55	LYS
2	B	109	ARG
2	B	111	LYS
2	B	132	GLU
2	B	204	GLN
1	C	76	GLN
1	C	132	ARG
1	C	248	TYR
2	D	53	ARG

Sometimes sidechains can be flipped to improve hydrogen bonding and reduce clashes. All (11) such sidechains are listed below:

Mol	Chain	Res	Type
1	A	76	GLN
1	A	123	ASN
1	A	169	HIS
1	A	171	ASN
2	B	81	GLN
2	B	88	ASN
2	B	202	HIS
1	C	76	GLN
1	C	171	ASN
2	D	81	GLN
2	D	125	ASN

5.3.3 RNA [i](#)

There are no RNA molecules in this entry.

5.4 Non-standard residues in protein, DNA, RNA chains [i](#)

There are no non-standard protein/DNA/RNA residues in this entry.

5.5 Carbohydrates [i](#)

There are no monosaccharides in this entry.

5.6 Ligand geometry

Of 19 ligands modelled in this entry, 2 are monoatomic - leaving 17 for Mogul analysis.

In the following table, the Counts columns list the number of bonds (or angles) for which Mogul statistics could be retrieved, the number of bonds (or angles) that are observed in the model and the number of bonds (or angles) that are defined in the Chemical Component Dictionary. The Link column lists molecule types, if any, to which the group is linked. The Z score for a bond length (or angle) is the number of standard deviations the observed value is removed from the expected value. A bond length (or angle) with $|Z| > 2$ is considered an outlier worth inspection. RMSZ is the root-mean-square of all Z scores of the bond lengths (or angles).

Mol	Type	Chain	Res	Link	Bond lengths			Bond angles		
					Counts	RMSZ	# Z > 2	Counts	RMSZ	# Z > 2
6	MPD	B	302	-	7,7,7	0.22	0	9,10,10	0.96	1 (11%)
6	MPD	A	904	-	7,7,7	0.32	0	9,10,10	0.34	0
6	MPD	A	906	-	7,7,7	0.34	0	9,10,10	0.58	0
5	VAL	C	401	-	5,7,7	1.32	1 (20%)	7,9,9	0.91	0
3	NAG	A	901	1	14,14,15	0.56	0	17,19,21	0.90	0
6	MPD	D	304	-	7,7,7	0.31	0	9,10,10	0.39	0
6	MPD	C	404	-	7,7,7	0.20	0	9,10,10	0.53	0
6	MPD	B	304	-	7,7,7	0.34	0	9,10,10	0.31	0
7	ACN	D	305	-	3,3,3	0.33	0	3,3,3	0.84	0
6	MPD	B	303	-	7,7,7	0.24	0	9,10,10	0.46	0
6	MPD	D	301	-	7,7,7	0.27	0	9,10,10	0.37	0
5	VAL	A	903	-	5,7,7	1.28	1 (20%)	7,9,9	0.73	0
6	MPD	A	905	-	7,7,7	0.21	0	9,10,10	0.68	0
6	MPD	B	301	-	7,7,7	0.24	0	9,10,10	0.40	0
6	MPD	D	303	-	7,7,7	0.21	0	9,10,10	0.41	0
3	NAG	C	402	1	14,14,15	0.57	0	17,19,21	1.07	2 (11%)
6	MPD	D	302	-	7,7,7	0.23	0	9,10,10	0.71	0

In the following table, the Chirals column lists the number of chiral outliers, the number of chiral centers analysed, the number of these observed in the model and the number defined in the Chemical Component Dictionary. Similar counts are reported in the Torsion and Rings columns. ^{1,2} means no outliers of that kind were identified.

Mol	Type	Chain	Res	Link	Chirals	Torsions	Rings
6	MPD	B	302	-	-	2/5/5/5	-
6	MPD	A	904	-	-	0/5/5/5	-
6	MPD	A	906	-	-	4/5/5/5	-
5	VAL	C	401	-	-	1/8/8/8	-
3	NAG	A	901	1	-	0/6/23/26	0/1/1/1
6	MPD	D	304	-	-	0/5/5/5	-

Continued on next page...

Continued from previous page...

Mol	Type	Chain	Res	Link	Chirals	Torsions	Rings
6	MPD	C	404	-	-	0/5/5/5	-
6	MPD	B	304	-	-	2/5/5/5	-
6	MPD	B	303	-	-	0/5/5/5	-
6	MPD	D	301	-	-	0/5/5/5	-
5	VAL	A	903	-	-	0/8/8/8	-
6	MPD	A	905	-	-	0/5/5/5	-
6	MPD	B	301	-	-	2/5/5/5	-
6	MPD	D	303	-	-	1/5/5/5	-
3	NAG	C	402	1	-	0/6/23/26	0/1/1/1
6	MPD	D	302	-	-	1/5/5/5	-

All (2) bond length outliers are listed below:

Mol	Chain	Res	Type	Atoms	Z	Observed(Å)	Ideal(Å)
5	C	401	VAL	OXT-C	-2.37	1.22	1.30
5	A	903	VAL	OXT-C	-2.07	1.23	1.30

All (3) bond angle outliers are listed below:

Mol	Chain	Res	Type	Atoms	Z	Observed(°)	Ideal(°)
3	C	402	NAG	O5-C1-C2	-2.47	107.38	111.29
3	C	402	NAG	C1-O5-C5	2.17	115.13	112.19
6	B	302	MPD	CM-C2-C1	-2.00	106.40	110.57

There are no chirality outliers.

All (13) torsion outliers are listed below:

Mol	Chain	Res	Type	Atoms
6	A	906	MPD	O2-C2-C3-C4
6	A	906	MPD	CM-C2-C3-C4
5	C	401	VAL	OXT-C-CA-N
6	B	301	MPD	C2-C3-C4-C5
6	D	303	MPD	C2-C3-C4-C5
6	A	906	MPD	C1-C2-C3-C4
6	B	302	MPD	CM-C2-C3-C4
6	B	304	MPD	C1-C2-C3-C4
6	D	302	MPD	CM-C2-C3-C4
6	B	302	MPD	O2-C2-C3-C4
6	A	906	MPD	C2-C3-C4-O4
6	B	301	MPD	C2-C3-C4-O4
6	B	304	MPD	C2-C3-C4-O4

There are no ring outliers.

7 monomers are involved in 19 short contacts:

Mol	Chain	Res	Type	Clashes	Symm-Clashes
6	B	302	MPD	4	0
6	A	906	MPD	1	0
5	C	401	VAL	3	0
7	D	305	ACN	1	0
5	A	903	VAL	4	0
6	B	301	MPD	2	0
6	D	303	MPD	4	0

5.7 Other polymers [i](#)

There are no such residues in this entry.

5.8 Polymer linkage issues [i](#)

There are no chain breaks in this entry.

6 Fit of model and data

6.1 Protein, DNA and RNA chains

EDS was not executed - this section is therefore empty.

6.2 Non-standard residues in protein, DNA, RNA chains

EDS was not executed - this section is therefore empty.

6.3 Carbohydrates

EDS was not executed - this section is therefore empty.

6.4 Ligands

EDS was not executed - this section is therefore empty.

6.5 Other polymers

EDS was not executed - this section is therefore empty.