



Full wwPDB X-ray Structure Validation Report ⓘ

Jul 31, 2023 – 07:05 AM EDT

PDB ID : 2AY8
Title : AROMATIC AMINO ACID AMINOTRANSFERASE WITH 4-(2-THIENYL)BUTYRIC ACID
Authors : Okamoto, A.; Hirotsu, K.; Kagamiyama, H.
Deposited on : 1998-08-06
Resolution : 2.20 Å(reported)

This is a Full wwPDB X-ray Structure Validation Report for a publicly released PDB entry.

We welcome your comments at validation@mail.wwpdb.org

A user guide is available at

<https://www.wwpdb.org/validation/2017/XrayValidationReportHelp>

with specific help available everywhere you see the ⓘ symbol.

The types of validation reports are described at

<http://www.wwpdb.org/validation/2017/FAQs#types>.

The following versions of software and data (see [references ⓘ](#)) were used in the production of this report:

MolProbity : 4.02b-467
Mogul : 1.8.5 (274361), CSD as541be (2020)
Xtrriage (Phenix) : **NOT EXECUTED**
EDS : **NOT EXECUTED**
Percentile statistics : 20191225.v01 (using entries in the PDB archive December 25th 2019)
Ideal geometry (proteins) : Engh & Huber (2001)
Ideal geometry (DNA, RNA) : Parkinson et al. (1996)
Validation Pipeline (wwPDB-VP) : 2.34

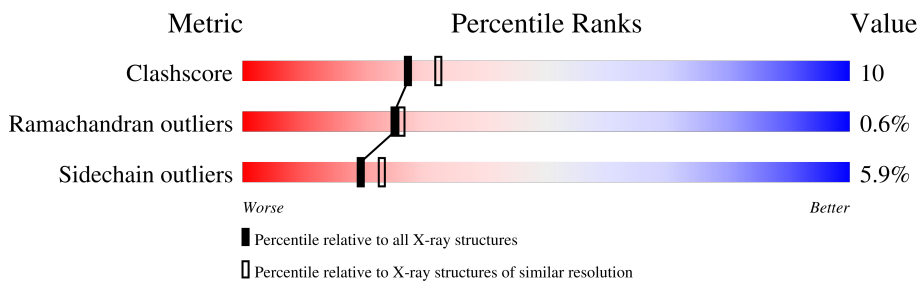
1 Overall quality at a glance

The following experimental techniques were used to determine the structure:

X-RAY DIFFRACTION

The reported resolution of this entry is 2.20 Å.

Percentile scores (ranging between 0-100) for global validation metrics of the entry are shown in the following graphic. The table shows the number of entries on which the scores are based.



Metric	Whole archive (#Entries)	Similar resolution (#Entries, resolution range(Å))
Clashscore	141614	5594 (2.20-2.20)
Ramachandran outliers	138981	5503 (2.20-2.20)
Sidechain outliers	138945	5504 (2.20-2.20)

The table below summarises the geometric issues observed across the polymeric chains and their fit to the electron density. The red, orange, yellow and green segments of the lower bar indicate the fraction of residues that contain outliers for ≥ 3 , 2, 1 and 0 types of geometric quality criteria respectively. A grey segment represents the fraction of residues that are not modelled. The numeric value for each fraction is indicated below the corresponding segment, with a dot representing fractions $\leq 5\%$.

Note EDS was not executed.

Mol	Chain	Length	Quality of chain
1	A	394	
1	B	394	

2 Entry composition [i](#)

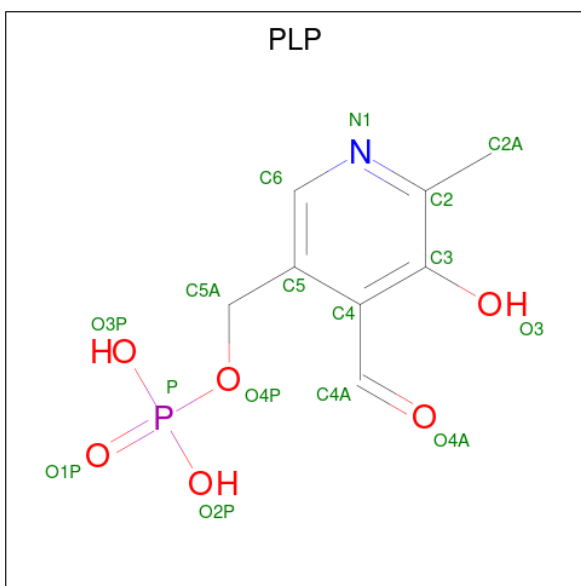
There are 4 unique types of molecules in this entry. The entry contains 6304 atoms, of which 0 are hydrogens and 0 are deuteriums.

In the tables below, the ZeroOcc column contains the number of atoms modelled with zero occupancy, the AltConf column contains the number of residues with at least one atom in alternate conformation and the Trace column contains the number of residues modelled with at most 2 atoms.

- Molecule 1 is a protein called AROMATIC AMINO ACID AMINOTRANSFERASE.

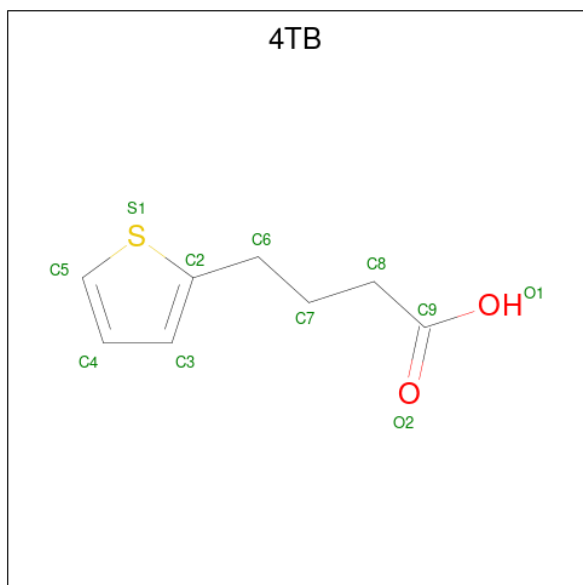
Mol	Chain	Residues	Atoms					ZeroOcc	AltConf	Trace
			Total	C	N	O	S			
1	A	394	Total	C	N	O	S	0	0	0
			2996	1884	527	565	20			
1	B	388	Total	C	N	O	S	0	0	0
			2945	1855	514	556	20			

- Molecule 2 is PYRIDOXAL-5'-PHOSPHATE (three-letter code: PLP) (formula: C₈H₁₀NO₆P).



Mol	Chain	Residues	Atoms					ZeroOcc	AltConf
			Total	C	N	O	P		
2	A	1	Total	C	N	O	P	0	0
			15	8	1	5	1		
2	B	1	Total	C	N	O	P	0	0
			15	8	1	5	1		

- Molecule 3 is 4-(2-THIENYL)BUTYRIC ACID (three-letter code: 4TB) (formula: C₈H₁₀O₂S).



Mol	Chain	Residues	Atoms				ZeroOcc	AltConf
3	A	1	Total	C	O	S	0	0
			11	8	2	1		
3	B	1	Total	C	O	S	0	0
			11	8	2	1		

- Molecule 4 is water.

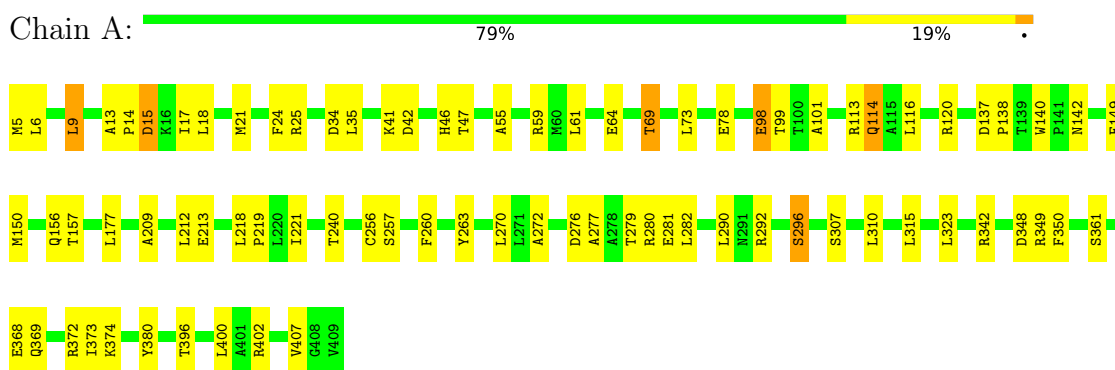
Mol	Chain	Residues	Atoms		ZeroOcc	AltConf
4	A	168	Total	O	0	0
			168	168		
4	B	143	Total	O	0	0
			143	143		

3 Residue-property plots [i](#)

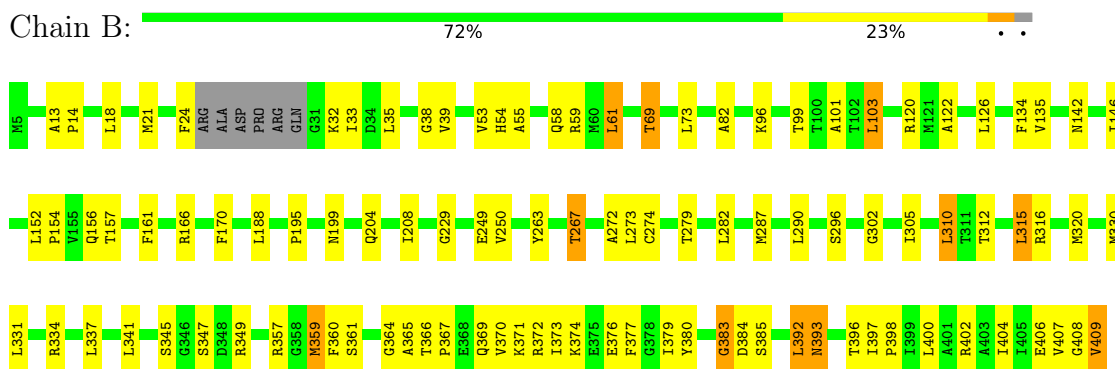
These plots are drawn for all protein, RNA, DNA and oligosaccharide chains in the entry. The first graphic for a chain summarises the proportions of the various outlier classes displayed in the second graphic. The second graphic shows the sequence view annotated by issues in geometry. Residues are color-coded according to the number of geometric quality criteria for which they contain at least one outlier: green = 0, yellow = 1, orange = 2 and red = 3 or more. Stretches of 2 or more consecutive residues without any outlier are shown as a green connector. Residues present in the sample, but not in the model, are shown in grey.

Note EDS was not executed.

- Molecule 1: AROMATIC AMINO ACID AMINOTRANSFERASE



- Molecule 1: AROMATIC AMINO ACID AMINOTRANSFERASE



4 Data and refinement statistics

Xtrriage (Phenix) and EDS were not executed - this section is therefore incomplete.

Property	Value	Source
Space group	P 21 21 21	Depositor
Cell constants a, b, c, α , β , γ	123.78Å 121.32Å 54.92Å 90.00° 90.00° 90.00°	Depositor
Resolution (Å)	6.00 – 2.20	Depositor
% Data completeness (in resolution range)	77.7 (6.00-2.20)	Depositor
R_{merge}	0.07	Depositor
R_{sym}	(Not available)	Depositor
Refinement program	X-PLOR 3.1	Depositor
R, R_{free}	0.182 , 0.245	Depositor
Estimated twinning fraction	No twinning to report.	Xtrriage
Total number of atoms	6304	wwPDB-VP
Average B, all atoms (Å ²)	27.0	wwPDB-VP

5 Model quality [i](#)

5.1 Standard geometry [i](#)

Bond lengths and bond angles in the following residue types are not validated in this section: PLP, 4TB

The Z score for a bond length (or angle) is the number of standard deviations the observed value is removed from the expected value. A bond length (or angle) with $|Z| > 5$ is considered an outlier worth inspection. RMSZ is the root-mean-square of all Z scores of the bond lengths (or angles).

Mol	Chain	Bond lengths		Bond angles	
		RMSZ	# Z >5	RMSZ	# Z >5
1	A	0.35	0/3048	0.59	0/4119
1	B	0.34	0/2995	0.61	1/4046 (0.0%)
All	All	0.34	0/6043	0.60	1/8165 (0.0%)

There are no bond length outliers.

All (1) bond angle outliers are listed below:

Mol	Chain	Res	Type	Atoms	Z	Observed(°)	Ideal(°)
1	B	188	LEU	CA-CB-CG	5.46	127.87	115.30

There are no chirality outliers.

There are no planarity outliers.

5.2 Too-close contacts [i](#)

In the following table, the Non-H and H(model) columns list the number of non-hydrogen atoms and hydrogen atoms in the chain respectively. The H(added) column lists the number of hydrogen atoms added and optimized by MolProbity. The Clashes column lists the number of clashes within the asymmetric unit, whereas Symm-Clashes lists symmetry-related clashes.

Mol	Chain	Non-H	H(model)	H(added)	Clashes	Symm-Clashes
1	A	2996	0	3004	47	0
1	B	2945	0	2953	81	0
2	A	15	0	6	0	0
2	B	15	0	7	0	0
3	A	11	0	9	1	0
3	B	11	0	9	3	0
4	A	168	0	0	5	0
4	B	143	0	0	2	0

Continued on next page...

Continued from previous page...

Mol	Chain	Non-H	H(model)	H(added)	Clashes	Symm-Clashes
All	All	6304	0	5988	121	0

The all-atom clashscore is defined as the number of clashes found per 1000 atoms (including hydrogen atoms). The all-atom clashscore for this structure is 10.

All (121) close contacts within the same asymmetric unit are listed below, sorted by their clash magnitude.

Atom-1	Atom-2	Interatomic distance (Å)	Clash overlap (Å)
1:A:61:LEU:HD21	1:B:58:GLN:HG2	1.60	0.84
1:B:35:LEU:HD22	1:B:379:ILE:HD11	1.62	0.82
1:A:69:THR:HG23	1:B:39:VAL:HG11	1.68	0.76
1:B:393:ASN:ND2	1:B:396:THR:H	1.85	0.74
1:B:103:LEU:HG	1:B:287:MET:HB3	1.70	0.73
1:B:18:LEU:O	1:B:21:MET:HG2	1.88	0.72
1:B:373:ILE:HG22	1:B:379:ILE:HG23	1.72	0.70
1:B:38:GLY:HA3	1:B:360:PHE:HZ	1.57	0.69
1:B:267:THR:HG21	1:B:302:GLY:HA3	1.75	0.69
1:A:73:LEU:HD11	1:A:292:ARG:HG3	1.77	0.67
1:A:78:GLU:HG2	1:A:307:SER:HB2	1.78	0.66
1:B:366:THR:HB	1:B:367:PRO:HD2	1.78	0.65
1:B:33:ILE:HG22	1:B:35:LEU:HD13	1.79	0.63
1:A:372:ARG:HD2	1:A:407:VAL:HG13	1.81	0.61
1:B:373:ILE:O	1:B:377:PHE:HB2	2.01	0.61
1:B:341:LEU:HD11	1:B:404:ILE:HD11	1.84	0.59
1:A:256:CYS:O	1:A:260:PHE:HB2	2.03	0.59
1:B:99:THR:HB	1:B:274:CYS:O	2.02	0.58
1:A:348:ASP:O	1:A:350:PHE:N	2.37	0.57
1:B:39:VAL:HG13	1:B:263:TYR:CZ	2.40	0.57
1:B:404:ILE:HA	1:B:407:VAL:HG12	1.87	0.57
1:A:368:GLU:HB3	4:A:505:HOH:O	2.05	0.56
1:B:24:PHE:CE1	1:B:32:LYS:HB3	2.40	0.56
1:A:257:SER:HB3	1:A:263:TYR:HA	1.88	0.55
1:B:366:THR:O	1:B:370:VAL:HG23	2.07	0.55
1:A:342:ARG:NH1	1:A:348:ASP:HA	2.22	0.55
1:B:120:ARG:HD3	1:B:152:LEU:HD11	1.89	0.55
1:A:114:GLN:HE21	1:A:114:GLN:HA	1.73	0.54
1:A:55:ALA:O	1:A:59:ARG:HG3	2.08	0.54
1:A:9:LEU:HD13	1:B:122:ALA:HB2	1.89	0.54
1:A:137:ASP:HB2	1:A:157:THR:HG23	1.89	0.54
1:B:134:PHE:HA	1:B:156:GLN:O	2.08	0.53
1:A:17:ILE:HG22	1:A:21:MET:SD	2.48	0.53

Continued on next page...

Continued from previous page...

Atom-1	Atom-2	Interatomic distance (Å)	Clash overlap (Å)
1:B:372:ARG:O	1:B:376:GLU:HG2	2.09	0.53
1:A:6:LEU:O	1:A:9:LEU:HB2	2.08	0.53
1:B:392:LEU:HD11	1:B:400:LEU:HD22	1.91	0.53
1:A:140:TRP:CE3	1:A:142:ASN:HB2	2.44	0.53
1:A:137:ASP:HB2	1:A:157:THR:CG2	2.40	0.52
1:B:101:ALA:HB3	1:B:272:ALA:HB3	1.92	0.52
1:A:101:ALA:HB3	1:A:272:ALA:HB3	1.91	0.52
1:A:47:THR:HG21	1:B:69:THR:HG23	1.91	0.52
1:B:393:ASN:HD21	1:B:396:THR:H	1.54	0.52
1:B:379:ILE:HD13	1:B:400:LEU:HD13	1.92	0.51
1:A:374:LYS:HD2	1:A:380:TYR:CE2	2.45	0.51
1:A:212:LEU:HD13	1:A:219:PRO:HG3	1.90	0.51
1:B:35:LEU:HD11	1:B:392:LEU:HD13	1.93	0.51
1:B:96:LYS:HA	4:B:540:HOH:O	2.11	0.50
3:A:414:4TB:H5	1:B:296:SER:OG	2.11	0.50
1:A:369:GLN:O	1:A:373:ILE:HG13	2.11	0.50
1:A:279:THR:HG21	4:A:499:HOH:O	2.11	0.49
1:A:277:ALA:O	1:A:281:GLU:HG2	2.12	0.49
1:B:371:LYS:HA	1:B:374:LYS:HG2	1.94	0.49
1:B:146:ILE:HB	4:B:522:HOH:O	2.11	0.49
1:B:374:LYS:HB2	1:B:380:TYR:CD1	2.46	0.49
1:B:341:LEU:CD1	1:B:404:ILE:HD11	2.42	0.48
1:B:166:ARG:NH2	1:B:364:GLY:HA3	2.27	0.48
1:B:38:GLY:HA3	1:B:360:PHE:CZ	2.45	0.48
1:A:14:PRO:HB3	1:A:18:LEU:HD21	1.95	0.48
1:B:384:ASP:O	1:B:385:SER:HB2	2.14	0.47
1:B:142:ASN:HD21	3:B:414:4TB:H4	1.80	0.47
1:B:170:PHE:CE1	1:B:204:GLN:HB3	2.49	0.47
1:A:41:LYS:HA	1:A:46:HIS:O	2.15	0.47
1:B:54:HIS:O	1:B:58:GLN:HG3	2.15	0.46
1:B:229:GLY:HA2	1:B:357:ARG:HG3	1.97	0.46
1:B:379:ILE:CD1	1:B:400:LEU:HD13	2.45	0.46
1:B:334:ARG:NH2	1:B:361:SER:HB2	2.31	0.46
1:B:312:THR:HB	1:B:315:LEU:HB2	1.98	0.45
1:A:9:LEU:CD1	1:B:122:ALA:HB2	2.46	0.45
1:B:374:LYS:HZ1	1:B:380:TYR:HE1	1.64	0.45
1:B:365:ALA:HB3	1:B:385:SER:OG	2.17	0.45
1:B:393:ASN:O	1:B:397:ILE:HG13	2.17	0.44
1:A:296:SER:OG	3:B:414:4TB:H5	2.17	0.44
1:B:371:LYS:O	1:B:374:LYS:HG2	2.17	0.44
1:B:373:ILE:CG2	1:B:379:ILE:HG23	2.45	0.44

Continued on next page...

Continued from previous page...

Atom-1	Atom-2	Interatomic distance (Å)	Clash overlap (Å)
1:B:374:LYS:HB2	1:B:380:TYR:CE1	2.53	0.44
1:B:359:MET:HE3	1:B:359:MET:HB3	1.96	0.44
1:B:152:LEU:HA	1:B:154:PRO:HD3	1.86	0.44
1:B:142:ASN:ND2	3:B:414:4TB:H4	2.32	0.44
1:A:24:PHE:CZ	1:A:34:ASP:HB2	2.52	0.43
1:A:42:ASP:HB2	4:A:530:HOH:O	2.18	0.43
1:B:267:THR:CG2	1:B:302:GLY:HA3	2.47	0.43
1:A:98:GLU:HG3	1:A:99:THR:HG23	2.00	0.43
1:B:13:ALA:HA	1:B:14:PRO:HD3	1.77	0.43
1:B:55:ALA:O	1:B:59:ARG:HG3	2.19	0.43
1:B:82:ALA:HB1	1:B:310:LEU:HD23	1.99	0.43
1:A:61:LEU:HD22	1:B:61:LEU:HD12	2.00	0.43
1:B:208:ILE:HD13	1:B:208:ILE:HA	1.85	0.43
1:B:402:ARG:O	1:B:406:GLU:HG2	2.19	0.43
1:A:407:VAL:HG12	1:A:407:VAL:O	2.19	0.43
1:B:370:VAL:HG11	1:B:383:GLY:HA2	2.01	0.43
1:B:161:PHE:CZ	1:B:166:ARG:HA	2.54	0.42
1:B:397:ILE:HB	1:B:398:PRO:HD3	2.01	0.42
1:B:135:VAL:HG23	1:B:157:THR:HG22	2.02	0.42
1:B:369:GLN:O	1:B:373:ILE:HG13	2.19	0.42
1:B:316:ARG:O	1:B:320:MET:HG3	2.20	0.42
1:B:334:ARG:HH22	1:B:361:SER:HB2	1.84	0.42
1:A:221:ILE:HD12	1:A:240:THR:HG23	2.01	0.42
1:B:347:SER:HB2	1:B:349:ARG:HG3	1.99	0.42
1:A:13:ALA:HA	1:A:14:PRO:HD3	1.85	0.42
1:B:357:ARG:HD3	1:B:357:ARG:HA	1.79	0.42
1:B:407:VAL:HG13	1:B:409:VAL:HG12	2.02	0.42
1:A:120:ARG:NH2	1:A:150:MET:O	2.53	0.42
1:A:114:GLN:HA	1:A:114:GLN:NE2	2.33	0.42
1:A:209:ALA:O	1:A:213:GLU:HG3	2.19	0.42
1:A:218:LEU:HA	1:A:219:PRO:HD3	1.91	0.42
1:A:15:ASP:OD1	1:B:73:LEU:HD22	2.21	0.41
1:B:393:ASN:HD21	1:B:396:THR:N	2.16	0.41
1:B:135:VAL:O	1:B:157:THR:HA	2.21	0.41
1:A:396:THR:HG21	4:A:481:HOH:O	2.20	0.41
1:B:53:VAL:HG13	1:B:305:ILE:HG21	2.03	0.41
1:A:113:ARG:HH12	1:A:149:PHE:HE2	1.68	0.41
1:A:137:ASP:HA	1:A:138:PRO:HA	1.90	0.41
1:B:330:MET:O	1:B:334:ARG:HG3	2.19	0.41
1:A:5:MET:N	4:A:500:HOH:O	2.54	0.41
1:A:21:MET:O	1:A:25:ARG:HB2	2.21	0.41

Continued on next page...

Continued from previous page...

Atom-1	Atom-2	Interatomic distance (Å)	Clash overlap (Å)
1:B:384:ASP:O	1:B:385:SER:CB	2.68	0.41
1:B:199:ASN:ND2	1:B:357:ARG:HB3	2.36	0.40
1:B:393:ASN:ND2	1:B:396:THR:OG1	2.54	0.40
1:A:177:LEU:HD23	1:A:177:LEU:HA	1.90	0.40
1:B:279:THR:O	1:B:282:LEU:HB2	2.22	0.40
1:B:249:GLU:HA	1:B:273:LEU:O	2.21	0.40

There are no symmetry-related clashes.

5.3 Torsion angles [i](#)

5.3.1 Protein backbone [i](#)

In the following table, the Percentiles column shows the percent Ramachandran outliers of the chain as a percentile score with respect to all X-ray entries followed by that with respect to entries of similar resolution.

The Analysed column shows the number of residues for which the backbone conformation was analysed, and the total number of residues.

Mol	Chain	Analysed	Favoured	Allowed	Outliers	Percentiles	
1	A	392/394 (100%)	373 (95%)	17 (4%)	2 (0%)	29	31
1	B	384/394 (98%)	365 (95%)	16 (4%)	3 (1%)	19	19
All	All	776/788 (98%)	738 (95%)	33 (4%)	5 (1%)	25	26

All (5) Ramachandran outliers are listed below:

Mol	Chain	Res	Type
1	A	349	ARG
1	B	383	GLY
1	B	345	SER
1	A	296	SER
1	B	408	GLY

5.3.2 Protein sidechains [i](#)

In the following table, the Percentiles column shows the percent sidechain outliers of the chain as a percentile score with respect to all X-ray entries followed by that with respect to entries of similar resolution.

The Analysed column shows the number of residues for which the sidechain conformation was analysed, and the total number of residues.

Mol	Chain	Analysed	Rotameric	Outliers	Percentiles	
1	A	308/308 (100%)	288 (94%)	20 (6%)	17	19
1	B	303/308 (98%)	287 (95%)	16 (5%)	22	27
All	All	611/616 (99%)	575 (94%)	36 (6%)	19	23

All (36) residues with a non-rotameric sidechain are listed below:

Mol	Chain	Res	Type
1	A	9	LEU
1	A	15	ASP
1	A	35	LEU
1	A	64	GLU
1	A	69	THR
1	A	98	GLU
1	A	114	GLN
1	A	116	LEU
1	A	156	GLN
1	A	270	LEU
1	A	276	ASP
1	A	280	ARG
1	A	282	LEU
1	A	290	LEU
1	A	310	LEU
1	A	315	LEU
1	A	323	LEU
1	A	361	SER
1	A	400	LEU
1	A	402	ARG
1	B	61	LEU
1	B	69	THR
1	B	103	LEU
1	B	126	LEU
1	B	195	PRO
1	B	250	VAL
1	B	267	THR
1	B	290	LEU
1	B	310	LEU
1	B	315	LEU
1	B	331	LEU
1	B	337	LEU
1	B	359	MET

Continued on next page...

Continued from previous page...

Mol	Chain	Res	Type
1	B	392	LEU
1	B	393	ASN
1	B	409	VAL

Sometimes sidechains can be flipped to improve hydrogen bonding and reduce clashes. All (3) such sidechains are listed below:

Mol	Chain	Res	Type
1	A	54	HIS
1	A	114	GLN
1	B	393	ASN

5.3.3 RNA [i](#)

There are no RNA molecules in this entry.

5.4 Non-standard residues in protein, DNA, RNA chains [i](#)

There are no non-standard protein/DNA/RNA residues in this entry.

5.5 Carbohydrates [i](#)

There are no monosaccharides in this entry.

5.6 Ligand geometry [i](#)

4 ligands are modelled in this entry.

In the following table, the Counts columns list the number of bonds (or angles) for which Mogul statistics could be retrieved, the number of bonds (or angles) that are observed in the model and the number of bonds (or angles) that are defined in the Chemical Component Dictionary. The Link column lists molecule types, if any, to which the group is linked. The Z score for a bond length (or angle) is the number of standard deviations the observed value is removed from the expected value. A bond length (or angle) with $|Z| > 2$ is considered an outlier worth inspection. RMSZ is the root-mean-square of all Z scores of the bond lengths (or angles).

Mol	Type	Chain	Res	Link	Bond lengths			Bond angles		
					Counts	RMSZ	# Z > 2	Counts	RMSZ	# Z > 2
3	4TB	A	414	-	11,11,11	1.10	1 (9%)	8,13,13	0.90	0
3	4TB	B	414	-	11,11,11	1.20	1 (9%)	8,13,13	0.77	0

Mol	Type	Chain	Res	Link	Bond lengths			Bond angles		
					Counts	RMSZ	# Z > 2	Counts	RMSZ	# Z > 2
2	PLP	B	413	1	15,15,16	2.01	3 (20%)	20,22,23	1.97	5 (25%)
2	PLP	A	413	1	15,15,16	2.23	2 (13%)	20,22,23	1.96	3 (15%)

In the following table, the Chirals column lists the number of chiral outliers, the number of chiral centers analysed, the number of these observed in the model and the number defined in the Chemical Component Dictionary. Similar counts are reported in the Torsion and Rings columns. '-' means no outliers of that kind were identified.

Mol	Type	Chain	Res	Link	Chirals	Torsions	Rings
3	4TB	A	414	-	-	4/5/6/6	0/1/1/1
3	4TB	B	414	-	-	0/5/6/6	0/1/1/1
2	PLP	B	413	1	-	3/6/6/8	0/1/1/1
2	PLP	A	413	1	-	3/6/6/8	0/1/1/1

All (7) bond length outliers are listed below:

Mol	Chain	Res	Type	Atoms	Z	Observed(Å)	Ideal(Å)
2	A	413	PLP	C4A-C4	-6.39	1.38	1.51
2	B	413	PLP	C4A-C4	-5.65	1.39	1.51
2	A	413	PLP	C3-C2	-4.00	1.36	1.40
2	B	413	PLP	C3-C2	-3.77	1.37	1.40
2	B	413	PLP	C5-C4	2.20	1.42	1.40
3	A	414	4TB	C4-C3	2.15	1.46	1.39
3	B	414	4TB	C4-C3	2.13	1.46	1.39

All (8) bond angle outliers are listed below:

Mol	Chain	Res	Type	Atoms	Z	Observed(°)	Ideal(°)
2	B	413	PLP	O4P-C5A-C5	6.46	121.67	109.35
2	A	413	PLP	O4P-C5A-C5	6.04	120.86	109.35
2	A	413	PLP	O2P-P-O4P	-3.95	96.23	106.73
2	B	413	PLP	O2P-P-O4P	-2.66	99.65	106.73
2	B	413	PLP	C5-C6-N1	-2.27	120.03	123.82
2	B	413	PLP	O2P-P-O1P	-2.16	102.23	110.68
2	B	413	PLP	O3P-P-O1P	2.15	119.08	110.68
2	A	413	PLP	O3P-P-O1P	2.07	118.80	110.68

There are no chirality outliers.

All (10) torsion outliers are listed below:

Mol	Chain	Res	Type	Atoms
2	A	413	PLP	C4-C5-C5A-O4P
2	A	413	PLP	C6-C5-C5A-O4P
2	B	413	PLP	C4-C5-C5A-O4P
2	B	413	PLP	C6-C5-C5A-O4P
3	A	414	4TB	C2-C6-C7-C8
3	A	414	4TB	C6-C7-C8-C9
2	B	413	PLP	C5A-O4P-P-O1P
2	A	413	PLP	C5A-O4P-P-O1P
3	A	414	4TB	C7-C8-C9-O2
3	A	414	4TB	C7-C8-C9-O1

There are no ring outliers.

2 monomers are involved in 4 short contacts:

Mol	Chain	Res	Type	Clashes	Symm-Clashes
3	A	414	4TB	1	0
3	B	414	4TB	3	0

5.7 Other polymers [i](#)

There are no such residues in this entry.

5.8 Polymer linkage issues [i](#)

There are no chain breaks in this entry.

6 Fit of model and data [i](#)

6.1 Protein, DNA and RNA chains [i](#)

EDS was not executed - this section is therefore empty.

6.2 Non-standard residues in protein, DNA, RNA chains [i](#)

EDS was not executed - this section is therefore empty.

6.3 Carbohydrates [i](#)

EDS was not executed - this section is therefore empty.

6.4 Ligands [i](#)

EDS was not executed - this section is therefore empty.

6.5 Other polymers [i](#)

EDS was not executed - this section is therefore empty.