



# Full wwPDB X-ray Structure Validation Report ⓘ

Jun 16, 2024 – 06:19 AM EDT

PDB ID : 2AXG  
Title : The Immunogenicity of a Viral Cytotoxic T Cell Epitope is controlled by its MHC-bound Conformation  
Authors : Tynan, F.E.; Elhassen, D.; Purcell, A.W.; Burrows, J.M.; Borg, N.A.; Miles, J.J.; Williamson, N.A.; Green, K.J.; Tellam, J.; Kjer-Nielsen, L.; McCluskey, J.; Rossjohn, J.; Burrows, S.R.  
Deposited on : 2005-09-05  
Resolution : 2.00 Å(reported)

This is a Full wwPDB X-ray Structure Validation Report for a publicly released PDB entry.

We welcome your comments at [validation@mail.wwpdb.org](mailto:validation@mail.wwpdb.org)

A user guide is available at

<https://www.wwpdb.org/validation/2017/XrayValidationReportHelp>

with specific help available everywhere you see the ⓘ symbol.

The types of validation reports are described at

<http://www.wwpdb.org/validation/2017/FAQs#types>.

---

The following versions of software and data (see [references ⓘ](#)) were used in the production of this report:

MolProbity : 4.02b-467  
Mogul : 2022.3.0, CSD as543be (2022)  
Xtrriage (Phenix) : 1.20.1  
EDS : 2.37.1  
Percentile statistics : 20191225.v01 (using entries in the PDB archive December 25th 2019)  
Refmac : 5.8.0158  
CCP4 : 7.0.044 (Gargrove)  
Ideal geometry (proteins) : Engh & Huber (2001)  
Ideal geometry (DNA, RNA) : Parkinson et al. (1996)  
Validation Pipeline (wwPDB-VP) : 2.37.1

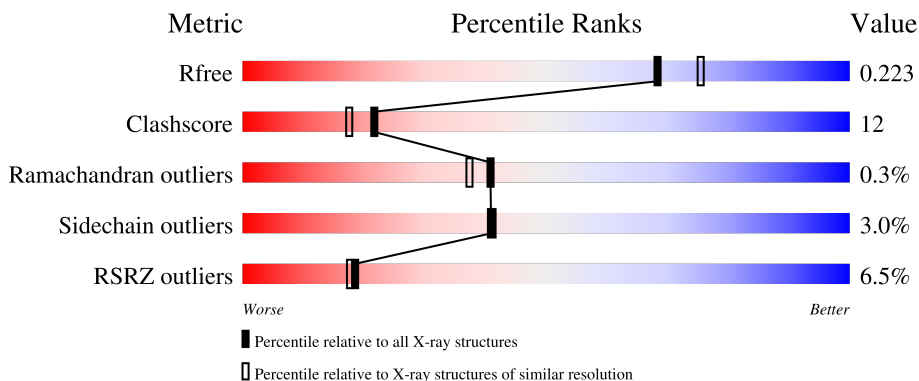
# 1 Overall quality at a glance i

The following experimental techniques were used to determine the structure:

*X-RAY DIFFRACTION*

The reported resolution of this entry is 2.00 Å.

Percentile scores (ranging between 0-100) for global validation metrics of the entry are shown in the following graphic. The table shows the number of entries on which the scores are based.



Metric	Whole archive (#Entries)	Similar resolution (#Entries, resolution range(Å))
$R_{free}$	130704	8085 (2.00-2.00)
Clashscore	141614	9178 (2.00-2.00)
Ramachandran outliers	138981	9054 (2.00-2.00)
Sidechain outliers	138945	9053 (2.00-2.00)
RSRZ outliers	127900	7900 (2.00-2.00)

The table below summarises the geometric issues observed across the polymeric chains and their fit to the electron density. The red, orange, yellow and green segments of the lower bar indicate the fraction of residues that contain outliers for  $\geq 3$ , 2, 1 and 0 types of geometric quality criteria respectively. A grey segment represents the fraction of residues that are not modelled. The numeric value for each fraction is indicated below the corresponding segment, with a dot representing fractions  $\leq 5\%$ . The upper red bar (where present) indicates the fraction of residues that have poor fit to the electron density. The numeric value is given above the bar.

Mol	Chain	Length	Quality of chain
1	A	276	<div style="display: flex; align-items: center;"> <div style="width: 5%; height: 10px; background-color: red; margin-right: 5px;"></div> <div style="width: 81%; height: 10px; background-color: green; margin-right: 5px;"></div> <div style="width: 18%; height: 10px; background-color: yellow; margin-right: 5px;"></div> <div style="width: 1%; height: 10px; background-color: orange; margin-right: 5px;"></div> <div style="width: 1%; height: 10px; background-color: grey;"></div> </div> <p style="margin-left: 5px;">5%      81%      18%      •</p>
2	B	99	<div style="display: flex; align-items: center;"> <div style="width: 10%; height: 10px; background-color: red; margin-right: 5px;"></div> <div style="width: 80%; height: 10px; background-color: green; margin-right: 5px;"></div> <div style="width: 18%; height: 10px; background-color: yellow; margin-right: 5px;"></div> <div style="width: 1%; height: 10px; background-color: orange; margin-right: 5px;"></div> <div style="width: 1%; height: 10px; background-color: grey;"></div> </div> <p style="margin-left: 5px;">10%      80%      18%      •</p>
3	C	10	<div style="display: flex; align-items: center;"> <div style="width: 10%; height: 10px; background-color: red; margin-right: 5px;"></div> <div style="width: 80%; height: 10px; background-color: green; margin-right: 5px;"></div> <div style="width: 10%; height: 10px; background-color: yellow; margin-right: 5px;"></div> <div style="width: 10%; height: 10px; background-color: orange; margin-right: 5px;"></div> <div style="width: 1%; height: 10px; background-color: grey;"></div> </div> <p style="margin-left: 5px;">10%      80%      10%      10%</p>

## 2 Entry composition [i](#)

There are 5 unique types of molecules in this entry. The entry contains 3508 atoms, of which 0 are hydrogens and 0 are deuteriums.

In the tables below, the ZeroOcc column contains the number of atoms modelled with zero occupancy, the AltConf column contains the number of residues with at least one atom in alternate conformation and the Trace column contains the number of residues modelled with at most 2 atoms.

- Molecule 1 is a protein called HLA class I histocompatibility antigen, B\*3501 heavy chain.

Mol	Chain	Residues	Atoms					ZeroOcc	AltConf	Trace
			Total	C	N	O	S			
1	A	276	2254	1405	411	431	7	0	0	0

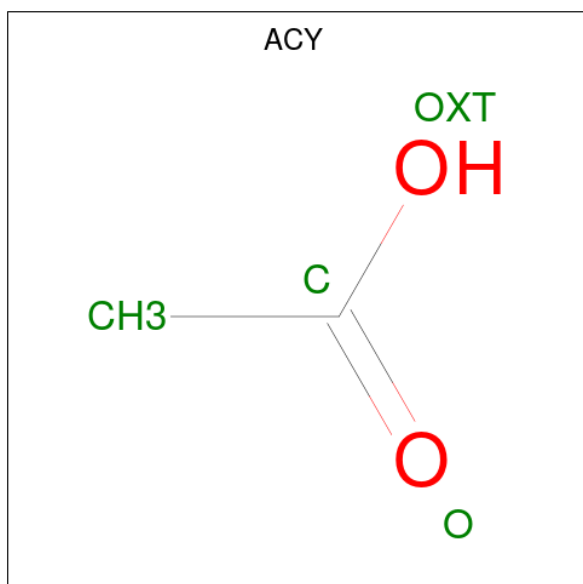
- Molecule 2 is a protein called Beta-2-microglobulin.

Mol	Chain	Residues	Atoms					ZeroOcc	AltConf	Trace
			Total	C	N	O	S			
2	B	99	829	528	140	158	3	0	0	0

- Molecule 3 is a protein called 10-mer peptide from BZLF1 trans-activator protein.

Mol	Chain	Residues	Atoms				ZeroOcc	AltConf	Trace
			Total	C	N	O			
3	C	10	75	47	12	16	0	0	0

- Molecule 4 is ACETIC ACID (three-letter code: ACY) (formula: C<sub>2</sub>H<sub>4</sub>O<sub>2</sub>).



Mol	Chain	Residues	Atoms			ZeroOcc	AltConf
4	A	1	Total	C	O	0	0
			4	2	2		
4	B	1	Total	C	O	0	0
			4	2	2		

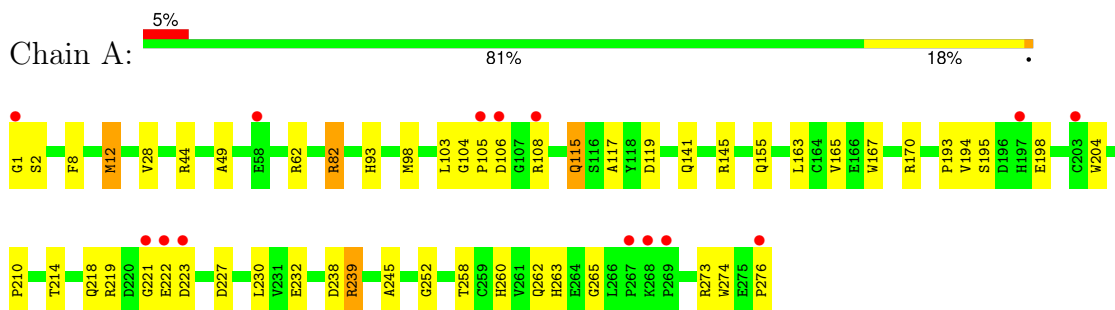
- Molecule 5 is water.

Mol	Chain	Residues	Atoms		ZeroOcc	AltConf
5	A	239	Total	O	0	0
			239	239		
5	B	87	Total	O	0	0
			87	87		
5	C	16	Total	O	0	0
			16	16		

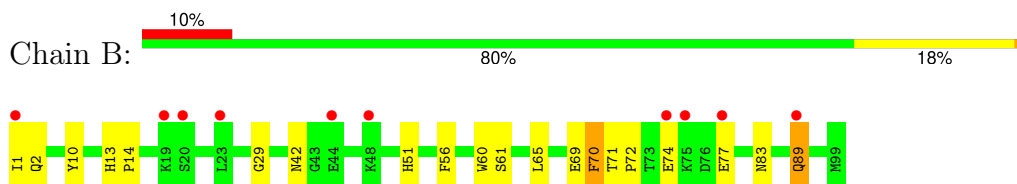
### 3 Residue-property plots [i](#)

These plots are drawn for all protein, RNA, DNA and oligosaccharide chains in the entry. The first graphic for a chain summarises the proportions of the various outlier classes displayed in the second graphic. The second graphic shows the sequence view annotated by issues in geometry and electron density. Residues are color-coded according to the number of geometric quality criteria for which they contain at least one outlier: green = 0, yellow = 1, orange = 2 and red = 3 or more. A red dot above a residue indicates a poor fit to the electron density ( $RSRZ > 2$ ). Stretches of 2 or more consecutive residues without any outlier are shown as a green connector. Residues present in the sample, but not in the model, are shown in grey.

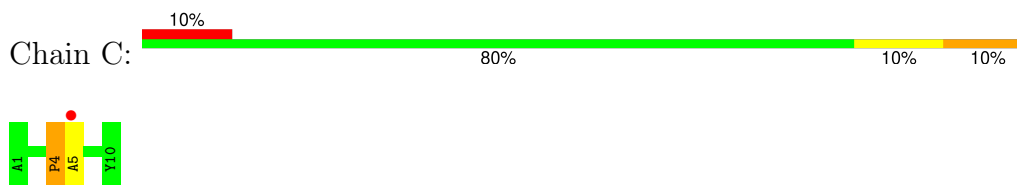
- Molecule 1: HLA class I histocompatibility antigen, B\*3501 heavy chain



- Molecule 2: Beta-2-microglobulin



- Molecule 3: 10-mer peptide from BZLF1 trans-activator protein



## 4 Data and refinement statistics

Property	Value	Source
Space group	P 21 21 21	Depositor
Cell constants a, b, c, $\alpha$ , $\beta$ , $\gamma$	50.81Å 81.56Å 110.38Å 90.00° 90.00° 90.00°	Depositor
Resolution (Å)	30.00 – 2.00 19.65 – 1.99	Depositor EDS
% Data completeness (in resolution range)	(Not available) (30.00-2.00) 87.7 (19.65-1.99)	Depositor EDS
$R_{merge}$	(Not available)	Depositor
$R_{sym}$	(Not available)	Depositor
$\langle I/\sigma(I) \rangle$ <sup>1</sup>	4.12 (at 1.99Å)	Xtrriage
Refinement program	CNS	Depositor
R, $R_{free}$	0.213 , 0.234 0.202 , 0.223	Depositor DCC
$R_{free}$ test set	1438 reflections (5.09%)	wwPDB-VP
Wilson B-factor (Å <sup>2</sup> )	27.6	Xtrriage
Anisotropy	0.593	Xtrriage
Bulk solvent $k_{sol}$ (e/Å <sup>3</sup> ), $B_{sol}$ (Å <sup>2</sup> )	0.33 , 43.5	EDS
L-test for twinning <sup>2</sup>	$\langle  L  \rangle = 0.49$ , $\langle L^2 \rangle = 0.32$	Xtrriage
Estimated twinning fraction	No twinning to report.	Xtrriage
$F_o, F_c$ correlation	0.95	EDS
Total number of atoms	3508	wwPDB-VP
Average B, all atoms (Å <sup>2</sup> )	31.0	wwPDB-VP

Xtrriage's analysis on translational NCS is as follows: *The largest off-origin peak in the Patterson function is 6.04% of the height of the origin peak. No significant pseudotranslation is detected.*

<sup>1</sup>Intensities estimated from amplitudes.

<sup>2</sup>Theoretical values of  $\langle |L| \rangle$ ,  $\langle L^2 \rangle$  for acentric reflections are 0.5, 0.333 respectively for untwinned datasets, and 0.375, 0.2 for perfectly twinned datasets.

## 5 Model quality [i](#)

### 5.1 Standard geometry [i](#)

Bond lengths and bond angles in the following residue types are not validated in this section: ACY

The Z score for a bond length (or angle) is the number of standard deviations the observed value is removed from the expected value. A bond length (or angle) with  $|Z| > 5$  is considered an outlier worth inspection. RMSZ is the root-mean-square of all Z scores of the bond lengths (or angles).

Mol	Chain	Bond lengths		Bond angles	
		RMSZ	# Z  >5	RMSZ	# Z  >5
1	A	0.39	0/2317	0.68	3/3150 (0.1%)
2	B	0.33	0/852	0.59	0/1152
3	C	0.37	0/78	0.62	0/107
All	All	0.37	0/3247	0.66	3/4409 (0.1%)

There are no bond length outliers.

All (3) bond angle outliers are listed below:

Mol	Chain	Res	Type	Atoms	Z	Observed(°)	Ideal(°)
1	A	28	VAL	N-CA-C	-5.59	95.91	111.00
1	A	49	ALA	N-CA-CB	-5.48	102.43	110.10
1	A	221	GLY	C-N-CA	5.20	134.69	121.70

There are no chirality outliers.

There are no planarity outliers.

### 5.2 Too-close contacts [i](#)

In the following table, the Non-H and H(model) columns list the number of non-hydrogen atoms and hydrogen atoms in the chain respectively. The H(added) column lists the number of hydrogen atoms added and optimized by MolProbity. The Clashes column lists the number of clashes within the asymmetric unit, whereas Symm-Clashes lists symmetry-related clashes.

Mol	Chain	Non-H	H(model)	H(added)	Clashes	Symm-Clashes
1	A	2254	0	2117	55	0
2	B	829	0	793	20	0
3	C	75	0	67	1	0
4	A	4	0	3	1	0
4	B	4	0	3	0	0

*Continued on next page...*

*Continued from previous page...*

Mol	Chain	Non-H	H(model)	H(added)	Clashes	Symm-Clashes
5	A	239	0	0	22	2
5	B	87	0	0	7	1
5	C	16	0	0	1	0
All	All	3508	0	2983	73	2

The all-atom clashscore is defined as the number of clashes found per 1000 atoms (including hydrogen atoms). The all-atom clashscore for this structure is 12.

All (73) close contacts within the same asymmetric unit are listed below, sorted by their clash magnitude.

Atom-1	Atom-2	Interatomic distance (Å)	Clash overlap (Å)
2:B:74:GLU:HG2	5:B:1070:HOH:O	1.24	1.27
1:A:219:ARG:HD3	5:A:1228:HOH:O	1.41	1.14
1:A:167:TRP:CZ2	5:A:1213:HOH:O	2.06	1.06
2:B:1:ILE:HA	5:B:1060:HOH:O	1.59	1.03
1:A:98:MET:HB3	5:A:1200:HOH:O	1.64	0.98
2:B:14:PRO:O	5:B:1048:HOH:O	1.85	0.95
1:A:167:TRP:CE2	5:A:1213:HOH:O	2.18	0.92
1:A:1:GLY:HA2	1:A:105:PRO:HD3	1.53	0.88
2:B:71:THR:O	5:B:1069:HOH:O	1.92	0.88
1:A:232:GLU:OE2	5:A:1095:HOH:O	1.95	0.82
1:A:2:SER:HB2	5:A:1163:HOH:O	1.79	0.80
2:B:89:GLN:NE2	2:B:89:GLN:HA	1.99	0.77
1:A:227:ASP:OD1	5:A:1186:HOH:O	2.04	0.75
1:A:103:LEU:HD21	1:A:165:VAL:HG13	1.68	0.74
1:A:263:HIS:CD2	1:A:265:GLY:H	2.06	0.74
1:A:193:PRO:O	5:A:1197:HOH:O	2.05	0.73
1:A:82:ARG:HH11	1:A:82:ARG:HB3	1.55	0.71
1:A:62:ARG:NH1	5:A:1213:HOH:O	2.24	0.68
1:A:2:SER:CB	5:A:1163:HOH:O	2.38	0.67
1:A:1:GLY:HA2	1:A:104:GLY:HA2	1.77	0.67
1:A:218:GLN:HA	1:A:222:GLU:O	1.94	0.67
1:A:232:GLU:CD	5:A:1095:HOH:O	2.32	0.65
1:A:98:MET:HG3	2:B:56:PHE:HE2	1.61	0.64
5:A:1073:HOH:O	2:B:13:HIS:HE1	1.81	0.64
1:A:238:ASP:O	1:A:239:ARG:HB3	1.99	0.63
1:A:252:GLY:O	5:A:1091:HOH:O	2.16	0.61
2:B:1:ILE:HG13	2:B:2:GLN:N	2.18	0.58
2:B:89:GLN:NE2	2:B:89:GLN:CA	2.66	0.57
1:A:106:ASP:OD1	1:A:108:ARG:HG2	2.04	0.57
1:A:12:MET:CE	5:B:1004:HOH:O	2.52	0.57

*Continued on next page...*



*Continued from previous page...*

Atom-1	Atom-2	Interatomic distance (Å)	Clash overlap (Å)
1:A:93:HIS:HE1	5:A:1034:HOH:O	1.88	0.57
1:A:1:GLY:HA2	1:A:105:PRO:CD	2.29	0.57
1:A:93:HIS:HD2	1:A:119:ASP:OD2	1.88	0.57
1:A:227:ASP:HA	5:A:1186:HOH:O	2.04	0.56
1:A:98:MET:HG3	2:B:56:PHE:CE2	2.40	0.55
1:A:274:TRP:CZ3	1:A:276:PRO:HG3	2.41	0.55
1:A:1:GLY:CA	1:A:104:GLY:HA2	2.36	0.55
1:A:218:GLN:CA	1:A:222:GLU:O	2.55	0.54
1:A:258:THR:OG1	1:A:260:HIS:HE1	1.90	0.53
1:A:214:THR:HB	1:A:262:GLN:HB2	1.91	0.51
1:A:218:GLN:HG3	1:A:223:ASP:OD1	2.11	0.50
1:A:155:GLN:OE1	5:A:1204:HOH:O	2.20	0.49
1:A:12:MET:HE1	5:B:1004:HOH:O	2.12	0.49
5:A:1073:HOH:O	2:B:13:HIS:CE1	2.62	0.48
1:A:8:PHE:CD2	1:A:98:MET:HG2	2.50	0.47
1:A:219:ARG:NH1	5:A:1228:HOH:O	2.44	0.46
1:A:194:VAL:HG23	1:A:195:SER:N	2.30	0.46
4:A:1001:ACY:H3	5:B:1042:HOH:O	2.15	0.46
2:B:51:HIS:HA	2:B:65:LEU:O	2.16	0.46
2:B:70:PHE:CZ	2:B:72:PRO:HG3	2.51	0.45
1:A:163:LEU:HD12	5:C:15:HOH:O	2.16	0.45
2:B:29:GLY:HA2	2:B:61:SER:OG	2.17	0.45
1:A:117:ALA:HB2	2:B:60:TRP:CE2	2.52	0.45
1:A:218:GLN:CG	1:A:223:ASP:OD1	2.65	0.45
1:A:98:MET:CB	5:A:1200:HOH:O	2.37	0.44
1:A:274:TRP:CE3	1:A:276:PRO:HG3	2.52	0.44
2:B:1:ILE:HG13	2:B:2:GLN:H	1.80	0.44
1:A:62:ARG:CZ	5:A:1099:HOH:O	2.65	0.44
1:A:204:TRP:HZ2	5:A:1189:HOH:O	2.00	0.43
1:A:167:TRP:CE3	1:A:170:ARG:HD3	2.53	0.43
3:C:4:PRO:HG2	3:C:5:ALA:H	1.84	0.43
1:A:219:ARG:O	1:A:222:GLU:HB3	2.19	0.43
1:A:194:VAL:HG22	1:A:198:GLU:O	2.19	0.42
1:A:222:GLU:HG3	1:A:223:ASP:N	2.34	0.42
1:A:141:GLN:O	1:A:145:ARG:HG3	2.20	0.42
1:A:210:PRO:O	1:A:263:HIS:HE1	2.02	0.42
1:A:115:GLN:NE2	5:A:1115:HOH:O	2.51	0.41
2:B:70:PHE:CE2	2:B:72:PRO:HG3	2.55	0.41
1:A:98:MET:CG	2:B:56:PHE:HE2	2.30	0.41
1:A:194:VAL:HG22	1:A:198:GLU:C	2.41	0.41
2:B:42:ASN:HA	2:B:77:GLU:HG3	2.03	0.41

*Continued on next page...*

Continued from previous page...

Atom-1	Atom-2	Interatomic distance (Å)	Clash overlap (Å)
2:B:10:TYR:CD1	2:B:10:TYR:N	2.89	0.41
1:A:230:LEU:CD1	1:A:245:ALA:HB2	2.51	0.40

All (2) symmetry-related close contacts are listed below. The label for Atom-2 includes the symmetry operator and encoded unit-cell translations to be applied.

Atom-1	Atom-2	Interatomic distance (Å)	Clash overlap (Å)
5:A:1205:HOH:O	5:B:1079:HOH:O[3_655]	1.85	0.35
5:A:1158:HOH:O	5:A:1224:HOH:O[3_645]	2.17	0.03

## 5.3 Torsion angles [i](#)

### 5.3.1 Protein backbone [i](#)

In the following table, the Percentiles column shows the percent Ramachandran outliers of the chain as a percentile score with respect to all X-ray entries followed by that with respect to entries of similar resolution.

The Analysed column shows the number of residues for which the backbone conformation was analysed, and the total number of residues.

Mol	Chain	Analysed	Favoured	Allowed	Outliers	Percentiles	
1	A	274/276 (99%)	267 (97%)	7 (3%)	0	100	100
2	B	97/99 (98%)	95 (98%)	2 (2%)	0	100	100
3	C	8/10 (80%)	7 (88%)	0	1 (12%)	0	0
All	All	379/385 (98%)	369 (97%)	9 (2%)	1 (0%)	41	37

All (1) Ramachandran outliers are listed below:

Mol	Chain	Res	Type
3	C	4	PRO

### 5.3.2 Protein sidechains [i](#)

In the following table, the Percentiles column shows the percent sidechain outliers of the chain as a percentile score with respect to all X-ray entries followed by that with respect to entries of similar resolution.

The Analysed column shows the number of residues for which the sidechain conformation was

analysed, and the total number of residues.

Mol	Chain	Analysed	Rotameric	Outliers	Percentiles	
1	A	234/234 (100%)	228 (97%)	6 (3%)	46	48
2	B	94/94 (100%)	90 (96%)	4 (4%)	29	26
3	C	7/7 (100%)	7 (100%)	0	100	100
All	All	335/335 (100%)	325 (97%)	10 (3%)	41	41

All (10) residues with a non-rotameric sidechain are listed below:

Mol	Chain	Res	Type
1	A	12	MET
1	A	44	ARG
1	A	82	ARG
1	A	115	GLN
1	A	239	ARG
1	A	273	ARG
2	B	69	GLU
2	B	70	PHE
2	B	83	ASN
2	B	89	GLN

Sometimes sidechains can be flipped to improve hydrogen bonding and reduce clashes. All (6) such sidechains are listed below:

Mol	Chain	Res	Type
1	A	80	ASN
1	A	93	HIS
1	A	260	HIS
1	A	263	HIS
2	B	83	ASN
3	C	3	GLN

### 5.3.3 RNA [i](#)

There are no RNA molecules in this entry.

## 5.4 Non-standard residues in protein, DNA, RNA chains [i](#)

There are no non-standard protein/DNA/RNA residues in this entry.

## 5.5 Carbohydrates [i](#)

There are no monosaccharides in this entry.

## 5.6 Ligand geometry [i](#)

2 ligands are modelled in this entry.

In the following table, the Counts columns list the number of bonds (or angles) for which Mogul statistics could be retrieved, the number of bonds (or angles) that are observed in the model and the number of bonds (or angles) that are defined in the Chemical Component Dictionary. The Link column lists molecule types, if any, to which the group is linked. The Z score for a bond length (or angle) is the number of standard deviations the observed value is removed from the expected value. A bond length (or angle) with  $|Z| > 2$  is considered an outlier worth inspection. RMSZ is the root-mean-square of all Z scores of the bond lengths (or angles).

Mol	Type	Chain	Res	Link	Bond lengths			Bond angles		
					Counts	RMSZ	# Z  > 2	Counts	RMSZ	# Z  > 2
4	ACY	A	1001	-	3,3,3	1.52	0	3,3,3	1.37	0
4	ACY	B	1002	-	3,3,3	1.54	0	3,3,3	1.38	0

There are no bond length outliers.

There are no bond angle outliers.

There are no chirality outliers.

There are no torsion outliers.

There are no ring outliers.

1 monomer is involved in 1 short contact:

Mol	Chain	Res	Type	Clashes	Symm-Clashes
4	A	1001	ACY	1	0

## 5.7 Other polymers [i](#)

There are no such residues in this entry.

## 5.8 Polymer linkage issues [i](#)

There are no chain breaks in this entry.

## 6 Fit of model and data

### 6.1 Protein, DNA and RNA chains

In the following table, the column labelled ‘#RSRZ > 2’ contains the number (and percentage) of RSRZ outliers, followed by percent RSRZ outliers for the chain as percentile scores relative to all X-ray entries and entries of similar resolution. The OWAB column contains the minimum, median, 95<sup>th</sup> percentile and maximum values of the occupancy-weighted average B-factor per residue. The column labelled ‘Q < 0.9’ lists the number of (and percentage) of residues with an average occupancy less than 0.9.

Mol	Chain	Analysed	<RSRZ>	#RSRZ>2	OWAB(Å <sup>2</sup> )	Q<0.9
1	A	276/276 (100%)	0.19	14 (5%) 28 27	16, 26, 47, 60	0
2	B	99/99 (100%)	0.56	10 (10%) 7 6	17, 36, 53, 57	0
3	C	10/10 (100%)	0.58	1 (10%) 7 6	23, 32, 40, 41	0
All	All	385/385 (100%)	0.29	25 (6%) 18 18	16, 28, 49, 60	0

All (25) RSRZ outliers are listed below:

Mol	Chain	Res	Type	RSRZ
1	A	1	GLY	7.3
1	A	105	PRO	5.5
2	B	1	ILE	5.1
2	B	75	LYS	3.7
2	B	48	LYS	3.6
1	A	197	HIS	3.4
2	B	89	GLN	3.4
2	B	19	LYS	3.2
1	A	276	PRO	3.1
1	A	222	GLU	3.1
1	A	268	LYS	2.8
2	B	74	GLU	2.7
1	A	221	GLY	2.6
1	A	267	PRO	2.6
1	A	108	ARG	2.4
1	A	106	ASP	2.3
2	B	77	GLU	2.3
2	B	20	SER	2.3
2	B	23	LEU	2.2
1	A	223	ASP	2.2
1	A	58	GLU	2.1
3	C	5	ALA	2.0
1	A	203	CYS	2.0

*Continued on next page...*

*Continued from previous page...*

Mol	Chain	Res	Type	RSRZ
1	A	269	PRO	2.0
2	B	44	GLU	2.0

## 6.2 Non-standard residues in protein, DNA, RNA chains [i](#)

There are no non-standard protein/DNA/RNA residues in this entry.

## 6.3 Carbohydrates [i](#)

There are no monosaccharides in this entry.

## 6.4 Ligands [i](#)

In the following table, the Atoms column lists the number of modelled atoms in the group and the number defined in the chemical component dictionary. The B-factors column lists the minimum, median, 95<sup>th</sup> percentile and maximum values of B factors of atoms in the group. The column labelled 'Q < 0.9' lists the number of atoms with occupancy less than 0.9.

Mol	Type	Chain	Res	Atoms	RSCC	RSR	B-factors(Å <sup>2</sup> )	Q < 0.9
4	ACY	B	1002	4/4	0.50	0.30	49,51,52,52	0
4	ACY	A	1001	4/4	0.72	0.20	62,63,63,63	0

## 6.5 Other polymers [i](#)

There are no such residues in this entry.