



Full wwPDB X-ray Structure Validation Report ⓘ

Oct 23, 2021 – 08:15 AM EDT

PDB ID : 1ZPR
Title : E. COLI THYMIDYLATE SYNTHASE MUTANT E58Q IN COMPLEX WITH CB3717 AND 2'-DEOXYURIDINE 5'-MONOPHOSPHATE (DUMP)
Authors : Sage, C.R.; Stout, T.J.; Rutenber, E.E.; Stroud, R.M.
Deposited on : 1996-10-15
Resolution : 2.50 Å(reported)

This is a Full wwPDB X-ray Structure Validation Report for a publicly released PDB entry.

We welcome your comments at validation@mail.wwpdb.org

A user guide is available at

<https://www.wwpdb.org/validation/2017/XrayValidationReportHelp>

with specific help available everywhere you see the ⓘ symbol.

The following versions of software and data (see [references ⓘ](#)) were used in the production of this report:

MolProbity : 4.02b-467
Mogul : 1.8.5 (274361), CSD as541be (2020)
Xtrriage (Phenix) : **NOT EXECUTED**
EDS : **NOT EXECUTED**
buster-report : 1.1.7 (2018)
Percentile statistics : 20191225.v01 (using entries in the PDB archive December 25th 2019)
Ideal geometry (proteins) : Engh & Huber (2001)
Ideal geometry (DNA, RNA) : Parkinson et al. (1996)
Validation Pipeline (wwPDB-VP) : 2.23.2

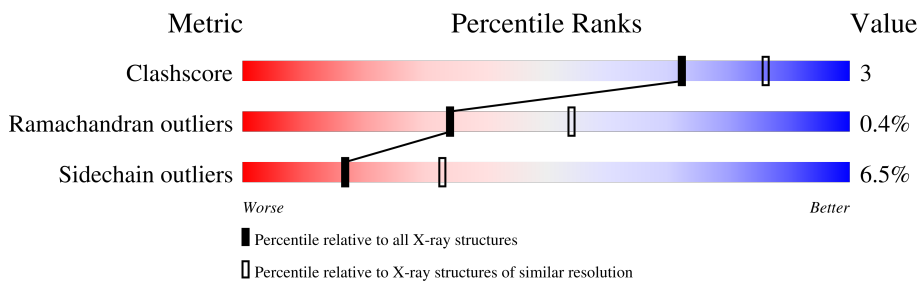
1 Overall quality at a glance

The following experimental techniques were used to determine the structure:

X-RAY DIFFRACTION

The reported resolution of this entry is 2.50 Å.

Percentile scores (ranging between 0-100) for global validation metrics of the entry are shown in the following graphic. The table shows the number of entries on which the scores are based.



Metric	Whole archive (#Entries)	Similar resolution (#Entries, resolution range(Å))
Clashscore	141614	5346 (2.50-2.50)
Ramachandran outliers	138981	5231 (2.50-2.50)
Sidechain outliers	138945	5233 (2.50-2.50)

The table below summarises the geometric issues observed across the polymeric chains and their fit to the electron density. The red, orange, yellow and green segments of the lower bar indicate the fraction of residues that contain outliers for ≥ 3 , 2, 1 and 0 types of geometric quality criteria respectively. A grey segment represents the fraction of residues that are not modelled. The numeric value for each fraction is indicated below the corresponding segment, with a dot representing fractions $\leq 5\%$.

Note EDS was not executed.

Mol	Chain	Length	Quality of chain
1	A	264	
1	B	264	

2 Entry composition [i](#)

There are 4 unique types of molecules in this entry. The entry contains 4594 atoms, of which 0 are hydrogens and 0 are deuteriums.

In the tables below, the ZeroOcc column contains the number of atoms modelled with zero occupancy, the AltConf column contains the number of residues with at least one atom in alternate conformation and the Trace column contains the number of residues modelled with at most 2 atoms.

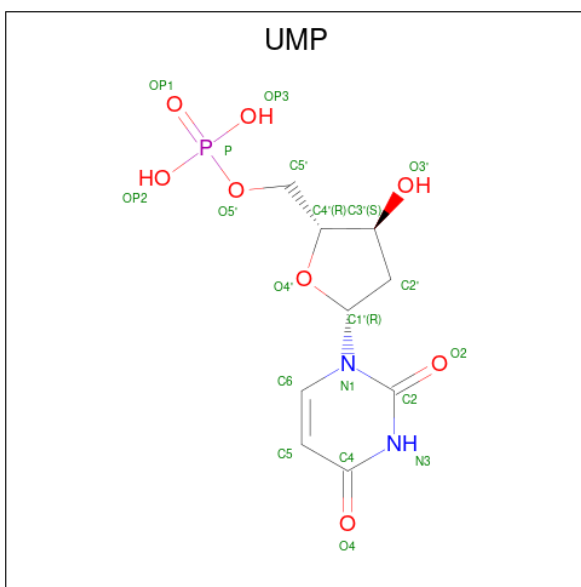
- Molecule 1 is a protein called THYMIDYLATE SYNTHASE.

Mol	Chain	Residues	Atoms					ZeroOcc	AltConf	Trace
			Total	C	N	O	S			
1	A	264	Total 2153	C 1375	N 372	O 394	S 12	0	0	0
1	B	264	Total 2153	C 1375	N 372	O 394	S 12	0	0	0

There are 2 discrepancies between the modelled and reference sequences:

Chain	Residue	Modelled	Actual	Comment	Reference
A	58	GLN	GLU	engineered mutation	UNP P0A884
B	58	GLN	GLU	engineered mutation	UNP P0A884

- Molecule 2 is 2'-DEOXYURIDINE 5'-MONOPHOSPHATE (three-letter code: UMP) (formula: C₉H₁₃N₂O₈P).



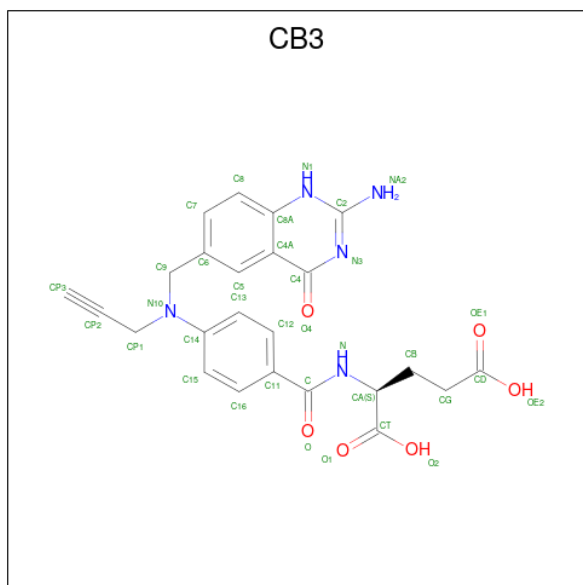
Mol	Chain	Residues	Atoms					ZeroOcc	AltConf
			Total	C	N	O	P		
2	A	1	Total 20	C 9	N 2	O 8	P 1	0	0

Continued on next page...

Continued from previous page...

Mol	Chain	Residues	Atoms					ZeroOcc	AltConf
			Total	C	N	O	P		
2	B	1	20	9	2	8	1	0	0

- Molecule 3 is 10-PROPARGYL-5,8-DIDEAZAFOLIC ACID (three-letter code: CB3) (formula: C₂₄H₂₃N₅O₆).



Mol	Chain	Residues	Atoms				ZeroOcc	AltConf
			Total	C	N	O		
3	A	1	35	24	5	6	0	0
3	B	1	35	24	5	6	0	0

- Molecule 4 is water.

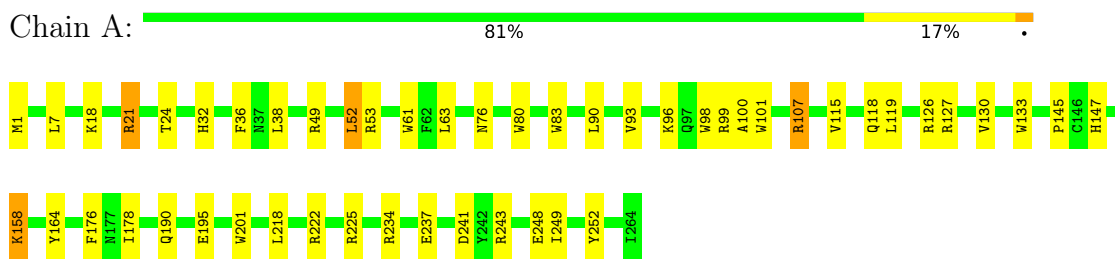
Mol	Chain	Residues	Atoms		ZeroOcc	AltConf
			Total	O		
4	A	113	113	113	0	0
4	B	65	65	65	0	0

3 Residue-property plots [i](#)

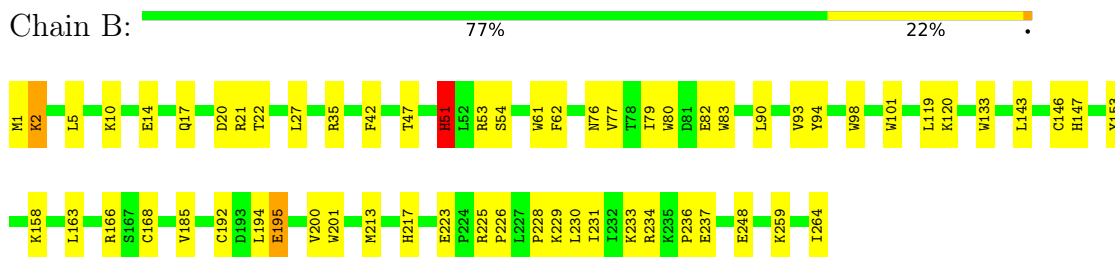
These plots are drawn for all protein, RNA, DNA and oligosaccharide chains in the entry. The first graphic for a chain summarises the proportions of the various outlier classes displayed in the second graphic. The second graphic shows the sequence view annotated by issues in geometry. Residues are color-coded according to the number of geometric quality criteria for which they contain at least one outlier: green = 0, yellow = 1, orange = 2 and red = 3 or more. Stretches of 2 or more consecutive residues without any outlier are shown as a green connector. Residues present in the sample, but not in the model, are shown in grey.

Note EDS was not executed.

- Molecule 1: THYMIDYLATE SYNTHASE



- Molecule 1: THYMIDYLATE SYNTHASE



4 Data and refinement statistics

Xtrriage (Phenix) and EDS were not executed - this section is therefore incomplete.

Property	Value	Source
Space group	P 63	Depositor
Cell constants a, b, c, α , β , γ	127.22Å 127.22Å 68.18Å 90.00° 90.00° 120.00°	Depositor
Resolution (Å)	7.00 – 2.50	Depositor
% Data completeness (in resolution range)	86.3 (7.00-2.50)	Depositor
R_{merge}	0.09	Depositor
R_{sym}	(Not available)	Depositor
Refinement program	X-PLOR 3.1	Depositor
R, R_{free}	0.152 , 0.240	Depositor
Estimated twinning fraction	No twinning to report.	Xtrriage
Total number of atoms	4594	wwPDB-VP
Average B, all atoms (Å ²)	21.0	wwPDB-VP

5 Model quality i

5.1 Standard geometry i

Bond lengths and bond angles in the following residue types are not validated in this section: UMP, CB3, CXM

The Z score for a bond length (or angle) is the number of standard deviations the observed value is removed from the expected value. A bond length (or angle) with $|Z| > 5$ is considered an outlier worth inspection. RMSZ is the root-mean-square of all Z scores of the bond lengths (or angles).

Mol	Chain	Bond lengths		Bond angles	
		RMSZ	# Z >5	RMSZ	# Z >5
1	A	0.85	0/2202	1.61	41/2990 (1.4%)
1	B	0.84	0/2202	1.55	36/2990 (1.2%)
All	All	0.85	0/4404	1.58	77/5980 (1.3%)

Chiral center outliers are detected by calculating the chiral volume of a chiral center and verifying if the center is modelled as a planar moiety or with the opposite hand. A planarity outlier is detected by checking planarity of atoms in a peptide group, atoms in a mainchain group or atoms of a sidechain that are expected to be planar.

Mol	Chain	#Chirality outliers	#Planarity outliers
1	A	0	1

There are no bond length outliers.

All (77) bond angle outliers are listed below:

Mol	Chain	Res	Type	Atoms	Z	Observed(°)	Ideal(°)
1	A	21	ARG	NE-CZ-NH2	-13.43	113.58	120.30
1	A	21	ARG	NE-CZ-NH1	13.00	126.80	120.30
1	A	127	ARG	NE-CZ-NH1	10.76	125.68	120.30
1	B	80	TRP	CD1-CG-CD2	8.54	113.14	106.30
1	B	80	TRP	CE2-CD2-CG	-8.41	100.57	107.30
1	B	98	TRP	CD1-CG-CD2	8.11	112.79	106.30
1	A	234	ARG	NE-CZ-NH1	8.08	124.34	120.30
1	A	133	TRP	CD1-CG-CD2	8.04	112.73	106.30
1	A	98	TRP	CD1-CG-CD2	7.93	112.65	106.30
1	B	83	TRP	CE2-CD2-CG	-7.90	100.98	107.30
1	A	61	TRP	CD1-CG-CD2	7.73	112.48	106.30
1	B	51	HIS	CA-CB-CG	7.70	126.70	113.60
1	A	127	ARG	NE-CZ-NH2	-7.65	116.47	120.30
1	A	133	TRP	CE2-CD2-CG	-7.62	101.21	107.30

Continued on next page...

Continued from previous page...

Mol	Chain	Res	Type	Atoms	Z	Observed(°)	Ideal(°)
1	A	61	TRP	CE2-CD2-CG	-7.59	101.22	107.30
1	B	83	TRP	CD1-CG-CD2	7.57	112.36	106.30
1	A	83	TRP	CE2-CD2-CG	-7.55	101.26	107.30
1	A	83	TRP	CD1-CG-CD2	7.53	112.33	106.30
1	A	164	TYR	CB-CG-CD1	-7.53	116.48	121.00
1	B	133	TRP	CD1-CG-CD2	7.49	112.29	106.30
1	A	80	TRP	CE2-CD2-CG	-7.47	101.32	107.30
1	A	80	TRP	CD1-CG-CD2	7.47	112.27	106.30
1	A	201	TRP	CD1-CG-CD2	7.40	112.22	106.30
1	A	201	TRP	CE2-CD2-CG	-7.37	101.40	107.30
1	B	133	TRP	CE2-CD2-CG	-7.35	101.42	107.30
1	A	101	TRP	CE2-CD2-CG	-7.22	101.52	107.30
1	B	101	TRP	CE2-CD2-CG	-7.15	101.58	107.30
1	B	201	TRP	CD1-CG-CD2	7.11	111.98	106.30
1	A	52	LEU	CB-CG-CD2	-7.08	98.96	111.00
1	B	201	TRP	CE2-CD2-CG	-6.96	101.74	107.30
1	B	98	TRP	CE2-CD2-CG	-6.85	101.82	107.30
1	A	101	TRP	CD1-CG-CD2	6.67	111.63	106.30
1	A	126	ARG	NE-CZ-NH1	6.66	123.63	120.30
1	B	143	LEU	CA-CB-CG	6.58	130.42	115.30
1	B	101	TRP	CD1-CG-CD2	6.54	111.53	106.30
1	A	98	TRP	CE2-CD2-CG	-6.54	102.07	107.30
1	B	93	VAL	CA-CB-CG2	-6.47	101.19	110.90
1	A	130	VAL	CG1-CB-CG2	-6.36	100.73	110.90
1	B	61	TRP	CE2-CD2-CG	-6.31	102.25	107.30
1	B	83	TRP	CG-CD2-CE3	6.21	139.49	133.90
1	A	158	LYS	CB-CG-CD	-6.05	95.86	111.60
1	A	147	HIS	CA-CB-CG	6.04	123.86	113.60
1	B	61	TRP	CD1-CG-CD2	5.97	111.08	106.30
1	B	143	LEU	CB-CG-CD2	-5.97	100.86	111.00
1	A	61	TRP	CG-CD2-CE3	5.89	139.20	133.90
1	A	49	ARG	NE-CZ-NH1	5.88	123.24	120.30
1	A	99	ARG	NE-CZ-NH2	-5.75	117.43	120.30
1	A	243	ARG	NE-CZ-NH1	5.73	123.17	120.30
1	B	35	ARG	NE-CZ-NH1	5.70	123.15	120.30
1	B	83	TRP	CB-CG-CD1	-5.67	119.64	127.00
1	B	201	TRP	CG-CD2-CE3	5.58	138.92	133.90
1	A	21	ARG	CB-CG-CD	-5.52	97.24	111.60
1	B	62	PHE	CB-CG-CD2	-5.52	116.93	120.80
1	B	93	VAL	CA-CB-CG1	5.46	119.09	110.90
1	A	21	ARG	CA-CB-CG	5.40	125.28	113.40
1	A	107	ARG	NE-CZ-NH2	-5.39	117.61	120.30

Continued on next page...

Continued from previous page...

Mol	Chain	Res	Type	Atoms	Z	Observed(°)	Ideal(°)
1	A	98	TRP	CG-CD1-NE1	-5.38	104.72	110.10
1	B	93	VAL	N-CA-CB	-5.36	99.70	111.50
1	A	133	TRP	CG-CD2-CE3	5.34	138.71	133.90
1	B	200	VAL	CG1-CB-CG2	-5.33	102.38	110.90
1	B	194	LEU	CA-CB-CG	5.32	127.54	115.30
1	B	166	ARG	NE-CZ-NH2	5.30	122.95	120.30
1	A	61	TRP	CB-CG-CD1	-5.29	120.13	127.00
1	A	225	ARG	NE-CZ-NH1	5.26	122.93	120.30
1	A	53	ARG	NE-CZ-NH1	5.26	122.93	120.30
1	B	90	LEU	CA-CB-CG	5.26	127.39	115.30
1	A	252	TYR	CB-CG-CD2	-5.24	117.86	121.00
1	A	222	ARG	NE-CZ-NH1	5.22	122.91	120.30
1	B	2	LYS	CA-CB-CG	5.22	124.89	113.40
1	B	133	TRP	CG-CD2-CE3	5.22	138.60	133.90
1	A	222	ARG	NE-CZ-NH2	-5.18	117.71	120.30
1	B	133	TRP	CB-CG-CD1	-5.14	120.31	127.00
1	B	21	ARG	NE-CZ-NH1	5.11	122.85	120.30
1	B	80	TRP	CG-CD2-CE3	5.09	138.48	133.90
1	B	185	VAL	CG1-CB-CG2	-5.06	102.80	110.90
1	B	27	LEU	N-CA-C	-5.04	97.38	111.00
1	A	21	ARG	N-CA-CB	-5.00	101.60	110.60

There are no chirality outliers.

All (1) planarity outliers are listed below:

Mol	Chain	Res	Type	Group
1	A	21	ARG	Sidechain

5.2 Too-close contacts

In the following table, the Non-H and H(model) columns list the number of non-hydrogen atoms and hydrogen atoms in the chain respectively. The H(added) column lists the number of hydrogen atoms added and optimized by MolProbity. The Clashes column lists the number of clashes within the asymmetric unit, whereas Symm-Clashes lists symmetry-related clashes.

Mol	Chain	Non-H	H(model)	H(added)	Clashes	Symm-Clashes
1	A	2153	0	2081	8	0
1	B	2153	0	2082	17	0
2	A	20	0	10	1	0
2	B	20	0	11	1	0
3	A	35	0	21	2	0

Continued on next page...

Continued from previous page...

Mol	Chain	Non-H	H(model)	H(added)	Clashes	Symm-Clashes
3	B	35	0	21	4	0
4	A	113	0	0	0	0
4	B	65	0	0	0	0
All	All	4594	0	4226	29	0

The all-atom clashscore is defined as the number of clashes found per 1000 atoms (including hydrogen atoms). The all-atom clashscore for this structure is 3.

All (29) close contacts within the same asymmetric unit are listed below, sorted by their clash magnitude.

Atom-1	Atom-2	Interatomic distance (Å)	Clash overlap (Å)
1:B:233:LYS:HD2	1:B:248:GLU:HB2	1.77	0.67
1:A:52:LEU:HD21	1:A:249:ILE:HD13	1.82	0.62
1:B:158:LYS:HG2	1:B:195:GLU:HG2	1.81	0.61
1:B:231:ILE:HB	1:B:248:GLU:HB3	1.85	0.57
1:B:146:CYS:SG	3:B:300:CB3:NA2	2.77	0.57
1:B:10:LYS:HG2	1:B:14:GLU:OE1	2.06	0.56
1:B:147:HIS:HB2	1:B:163:LEU:HD11	1.88	0.56
3:B:300:CB3:H13	3:B:300:CB3:CP2	2.37	0.53
1:A:18:LYS:HE2	1:B:153:TYR:CE1	2.44	0.52
1:B:5:LEU:HD11	1:B:47:THR:HG21	1.95	0.47
1:B:234:ARG:O	1:B:236:PRO:HD3	2.14	0.47
1:A:7:LEU:HD13	1:A:32:HIS:CD2	2.50	0.46
1:B:77:VAL:HG12	1:B:79:ILE:HG12	1.97	0.45
1:A:96:LYS:HE2	1:A:100:ALA:O	2.17	0.45
1:B:120:LYS:HE2	1:B:192:CYS:SG	2.57	0.45
1:A:36:PHE:CZ	1:A:178:ILE:HD13	2.53	0.44
1:B:119:LEU:HD23	1:B:119:LEU:HA	1.85	0.44
1:A:115:VAL:HA	1:A:118:GLN:HE21	1.83	0.43
3:B:300:CB3:HP11	3:B:300:CB3:H5	2.00	0.43
1:B:51:HIS:HE1	1:B:54:SER:OG	2.01	0.43
1:B:229:LYS:HD3	1:B:229:LYS:HA	1.86	0.43
2:A:301:UMP:O4	3:A:300:CB3:CP3	2.67	0.42
3:B:300:CB3:CP2	3:B:300:CB3:C13	2.94	0.42
1:B:168:CYS:HA	2:B:301:UMP:O2	2.19	0.42
1:A:52:LEU:HD21	1:A:249:ILE:CD1	2.49	0.41
1:B:42:PHE:HB3	1:B:228:PRO:HG2	2.02	0.41
1:A:158:LYS:HA	1:A:195:GLU:O	2.19	0.41
3:A:300:CB3:CP2	3:A:300:CB3:H15	2.50	0.41
1:B:213:MET:O	1:B:217:HIS:ND1	2.55	0.40

There are no symmetry-related clashes.

5.3 Torsion angles [i](#)

5.3.1 Protein backbone [i](#)

In the following table, the Percentiles column shows the percent Ramachandran outliers of the chain as a percentile score with respect to all X-ray entries followed by that with respect to entries of similar resolution.

The Analysed column shows the number of residues for which the backbone conformation was analysed, and the total number of residues.

Mol	Chain	Analysed	Favoured	Allowed	Outliers	Percentiles	
1	A	262/264 (99%)	255 (97%)	6 (2%)	1 (0%)	34	54
1	B	262/264 (99%)	250 (95%)	11 (4%)	1 (0%)	34	54
All	All	524/528 (99%)	505 (96%)	17 (3%)	2 (0%)	34	54

All (2) Ramachandran outliers are listed below:

Mol	Chain	Res	Type
1	B	94	TYR
1	A	93	VAL

5.3.2 Protein sidechains [i](#)

In the following table, the Percentiles column shows the percent sidechain outliers of the chain as a percentile score with respect to all X-ray entries followed by that with respect to entries of similar resolution.

The Analysed column shows the number of residues for which the sidechain conformation was analysed, and the total number of residues.

Mol	Chain	Analysed	Rotameric	Outliers	Percentiles	
1	A	232/232 (100%)	218 (94%)	14 (6%)	19	37
1	B	232/232 (100%)	216 (93%)	16 (7%)	15	30
All	All	464/464 (100%)	434 (94%)	30 (6%)	17	33

All (30) residues with a non-rotameric sidechain are listed below:

Mol	Chain	Res	Type
1	A	24	THR

Continued on next page...

Continued from previous page...

Mol	Chain	Res	Type
1	A	38	LEU
1	A	63	LEU
1	A	76	ASN
1	A	90	LEU
1	A	107	ARG
1	A	119	LEU
1	A	145	PRO
1	A	176	PHE
1	A	190	GLN
1	A	218	LEU
1	A	237	GLU
1	A	241	ASP
1	A	248	GLU
1	B	2	LYS
1	B	17	GLN
1	B	20	ASP
1	B	22	THR
1	B	51	HIS
1	B	53	ARG
1	B	76	ASN
1	B	82	GLU
1	B	195	GLU
1	B	223	GLU
1	B	225	ARG
1	B	226	PRO
1	B	230	LEU
1	B	237	GLU
1	B	259	LYS
1	B	264	ILE

Sometimes sidechains can be flipped to improve hydrogen bonding and reduce clashes. All (8) such sidechains are listed below:

Mol	Chain	Res	Type
1	A	64	GLN
1	A	118	GLN
1	B	39	GLN
1	B	51	HIS
1	B	108	HIS
1	B	177	ASN
1	B	190	GLN
1	B	207	HIS

5.3.3 RNA [i](#)

There are no RNA molecules in this entry.

5.4 Non-standard residues in protein, DNA, RNA chains [i](#)

2 non-standard protein/DNA/RNA residues are modelled in this entry.

In the following table, the Counts columns list the number of bonds (or angles) for which Mogul statistics could be retrieved, the number of bonds (or angles) that are observed in the model and the number of bonds (or angles) that are defined in the Chemical Component Dictionary. The Link column lists molecule types, if any, to which the group is linked. The Z score for a bond length (or angle) is the number of standard deviations the observed value is removed from the expected value. A bond length (or angle) with $|Z| > 2$ is considered an outlier worth inspection. RMSZ is the root-mean-square of all Z scores of the bond lengths (or angles).

Mol	Type	Chain	Res	Link	Bond lengths			Bond angles		
					Counts	RMSZ	# Z > 2	Counts	RMSZ	# Z > 2
1	CXM	B	1	1	6,10,11	0.77	0	5,11,13	1.37	1 (20%)
1	CXM	A	1	1	6,10,11	0.63	0	5,11,13	1.84	2 (40%)

In the following table, the Chirals column lists the number of chiral outliers, the number of chiral centers analysed, the number of these observed in the model and the number defined in the Chemical Component Dictionary. Similar counts are reported in the Torsion and Rings columns. '-' means no outliers of that kind were identified.

Mol	Type	Chain	Res	Link	Chirals	Torsions	Rings
1	CXM	B	1	1	-	0/7/10/12	-
1	CXM	A	1	1	-	1/7/10/12	-

There are no bond length outliers.

All (3) bond angle outliers are listed below:

Mol	Chain	Res	Type	Atoms	Z	Observed(°)	Ideal(°)
1	A	1	CXM	O-C-CA	-3.03	116.84	124.78
1	B	1	CXM	O-C-CA	-2.79	117.47	124.78
1	A	1	CXM	C-CA-N	-2.52	105.19	109.73

There are no chirality outliers.

All (1) torsion outliers are listed below:

Mol	Chain	Res	Type	Atoms
1	A	1	CXM	C-CA-N-CN

There are no ring outliers.

No monomer is involved in short contacts.

5.5 Carbohydrates [i](#)

There are no monosaccharides in this entry.

5.6 Ligand geometry [i](#)

4 ligands are modelled in this entry.

In the following table, the Counts columns list the number of bonds (or angles) for which Mogul statistics could be retrieved, the number of bonds (or angles) that are observed in the model and the number of bonds (or angles) that are defined in the Chemical Component Dictionary. The Link column lists molecule types, if any, to which the group is linked. The Z score for a bond length (or angle) is the number of standard deviations the observed value is removed from the expected value. A bond length (or angle) with $|Z| > 2$ is considered an outlier worth inspection. RMSZ is the root-mean-square of all Z scores of the bond lengths (or angles).

Mol	Type	Chain	Res	Link	Bond lengths			Bond angles		
					Counts	RMSZ	# Z > 2	Counts	RMSZ	# Z > 2
3	CB3	B	300	-	30,37,37	1.57	3 (10%)	38,51,51	3.20	16 (42%)
2	UMP	A	301	1	18,21,21	3.78	4 (22%)	21,31,31	1.64	7 (33%)
2	UMP	B	301	-	18,21,21	1.65	3 (16%)	21,31,31	1.58	5 (23%)
3	CB3	A	300	-	30,37,37	1.54	4 (13%)	38,51,51	2.30	9 (23%)

In the following table, the Chirals column lists the number of chiral outliers, the number of chiral centers analysed, the number of these observed in the model and the number defined in the Chemical Component Dictionary. Similar counts are reported in the Torsion and Rings columns. '-' means no outliers of that kind were identified.

Mol	Type	Chain	Res	Link	Chirals	Torsions	Rings
3	CB3	B	300	-	-	6/21/28/28	0/3/3/3
2	UMP	A	301	1	-	1/7/22/22	0/2/2/2
2	UMP	B	301	-	-	3/7/22/22	0/2/2/2
3	CB3	A	300	-	-	6/21/28/28	0/3/3/3

All (14) bond length outliers are listed below:

Mol	Chain	Res	Type	Atoms	Z	Observed(Å)	Ideal(Å)
2	A	301	UMP	C6-N1	12.45	1.51	1.35

Continued on next page...

Continued from previous page...

Mol	Chain	Res	Type	Atoms	Z	Observed(Å)	Ideal(Å)
2	A	301	UMP	C6-C5	8.50	1.56	1.38
3	B	300	CB3	O4-C4	5.49	1.38	1.24
3	A	300	CB3	O4-C4	5.29	1.37	1.24
2	A	301	UMP	C4-N3	3.59	1.39	1.33
2	B	301	UMP	C4-N3	3.48	1.39	1.33
2	B	301	UMP	C6-N1	-3.26	1.31	1.35
2	B	301	UMP	O4'-C1'	3.02	1.49	1.42
3	A	300	CB3	C9-N10	2.41	1.49	1.46
3	A	300	CB3	C8-C7	2.40	1.41	1.36
2	A	301	UMP	O4'-C1'	2.35	1.47	1.42
3	B	300	CB3	C9-N10	2.29	1.49	1.46
3	A	300	CB3	C5-C6	2.22	1.42	1.37
3	B	300	CB3	CA-N	2.16	1.49	1.46

All (37) bond angle outliers are listed below:

Mol	Chain	Res	Type	Atoms	Z	Observed(°)	Ideal(°)
3	B	300	CB3	C6-C9-N10	8.52	127.88	114.18
3	A	300	CB3	C4A-C8A-N1	-7.87	119.33	123.60
3	B	300	CB3	CP1-N10-C9	7.56	124.29	117.10
3	B	300	CB3	C4A-C8A-N1	-7.27	119.65	123.60
3	B	300	CB3	C4A-C4-N3	-5.58	120.51	124.40
3	B	300	CB3	N1-C2-N3	-5.49	119.89	127.22
3	A	300	CB3	N1-C2-N3	-5.28	120.18	127.22
3	A	300	CB3	C4A-C4-N3	-5.20	120.78	124.40
3	B	300	CB3	CP1-CP2-CP3	-5.10	169.11	177.67
3	B	300	CB3	C9-C6-C7	-4.77	111.80	120.77
3	B	300	CB3	CG-CB-CA	4.60	122.34	113.04
3	A	300	CB3	CP1-N10-C9	-4.24	113.07	117.10
2	B	301	UMP	P-O5'-C5'	3.85	128.90	118.30
2	B	301	UMP	C5-C4-N3	-3.77	115.02	123.31
3	B	300	CB3	C9-N10-C14	-3.71	114.40	120.78
3	A	300	CB3	C9-N10-C14	3.66	127.07	120.78
3	A	300	CB3	C4-N3-C2	3.16	120.95	115.93
3	B	300	CB3	C4-N3-C2	3.15	120.94	115.93
2	A	301	UMP	C5-C4-N3	-3.02	116.67	123.31
3	A	300	CB3	CG-CB-CA	2.98	119.06	113.04
2	A	301	UMP	C5-C6-N1	-2.95	114.10	120.68
3	B	300	CB3	C9-C6-C5	2.93	128.42	121.30
3	B	300	CB3	NA2-C2-N3	2.79	121.59	117.25
2	B	301	UMP	OP2-P-O5'	2.61	113.68	106.73
2	A	301	UMP	O4'-C1'-C2'	-2.52	101.50	106.25

Continued on next page...

Continued from previous page...

Mol	Chain	Res	Type	Atoms	Z	Observed(°)	Ideal(°)
2	A	301	UMP	OP3-P-O5'	2.47	113.30	106.73
2	B	301	UMP	O4'-C1'-C2'	-2.39	101.74	106.25
2	A	301	UMP	O5'-P-OP1	2.37	113.11	106.47
3	B	300	CB3	C2-N1-C8A	2.35	122.14	116.33
3	B	300	CB3	C4-C4A-C8A	-2.27	116.61	118.59
2	A	301	UMP	C2'-C3'-C4'	-2.23	98.11	102.76
3	B	300	CB3	O-C-N	-2.17	118.46	122.45
2	B	301	UMP	C2'-C3'-C4'	-2.16	98.26	102.76
3	A	300	CB3	CB-CG-CD	2.06	118.02	113.59
3	B	300	CB3	C7-C8-C8A	-2.04	118.27	120.84
2	A	301	UMP	P-O5'-C5'	2.03	123.89	118.30
3	A	300	CB3	C2-N1-C8A	2.03	121.36	116.33

There are no chirality outliers.

All (16) torsion outliers are listed below:

Mol	Chain	Res	Type	Atoms
2	B	301	UMP	O4'-C4'-C5'-O5'
3	A	300	CB3	CT-CA-CB-CG
3	B	300	CB3	N-CA-CB-CG
3	B	300	CB3	C6-C9-N10-CP1
2	B	301	UMP	C3'-C4'-C5'-O5'
3	A	300	CB3	N-CA-CB-CG
3	B	300	CB3	CA-CB-CG-CD
3	A	300	CB3	CA-CB-CG-CD
3	A	300	CB3	C15-C14-N10-C9
3	A	300	CB3	C13-C14-N10-C9
2	B	301	UMP	C5'-O5'-P-OP3
3	B	300	CB3	C13-C14-N10-C9
3	B	300	CB3	C6-C9-N10-C14
2	A	301	UMP	O4'-C4'-C5'-O5'
3	B	300	CB3	C15-C14-N10-C9
3	A	300	CB3	C5-C6-C9-N10

There are no ring outliers.

4 monomers are involved in 7 short contacts:

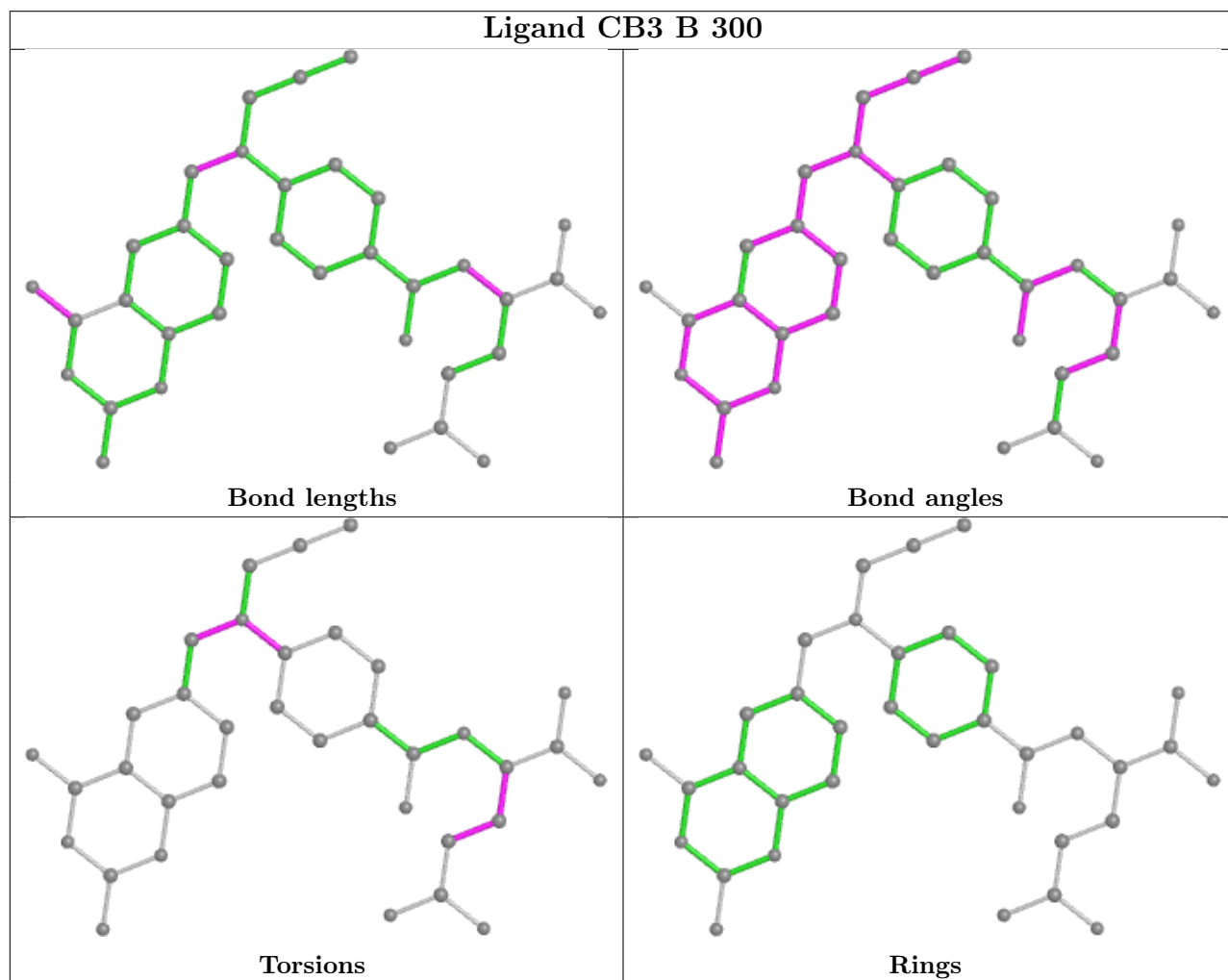
Mol	Chain	Res	Type	Clashes	Symm-Clashes
3	B	300	CB3	4	0
2	A	301	UMP	1	0
2	B	301	UMP	1	0

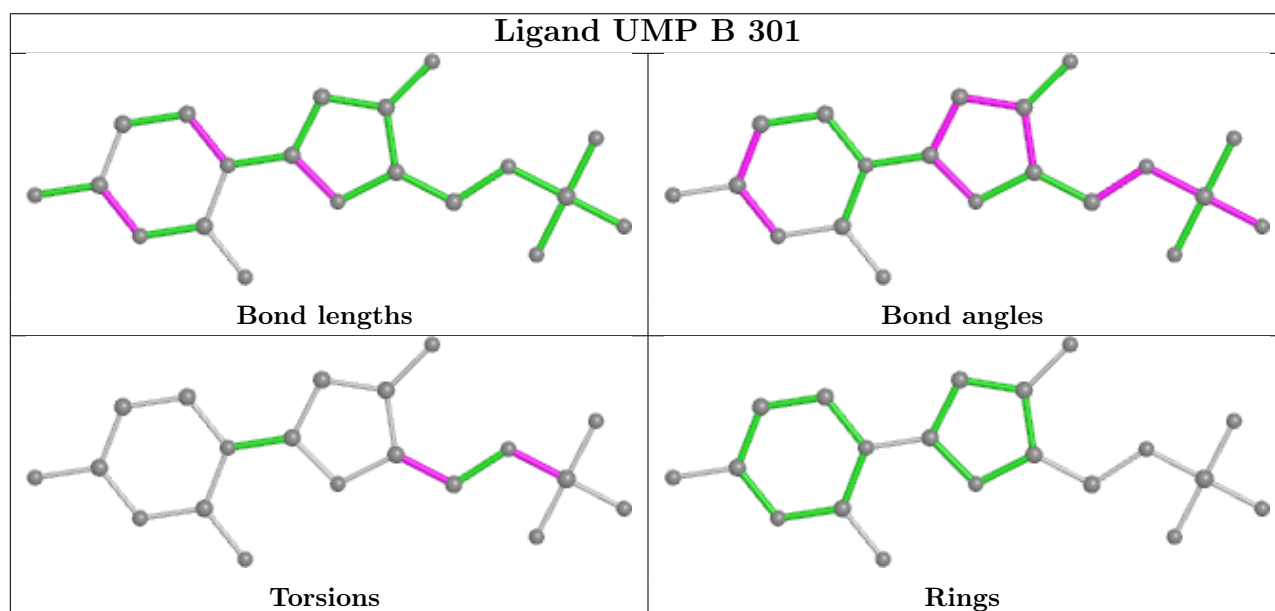
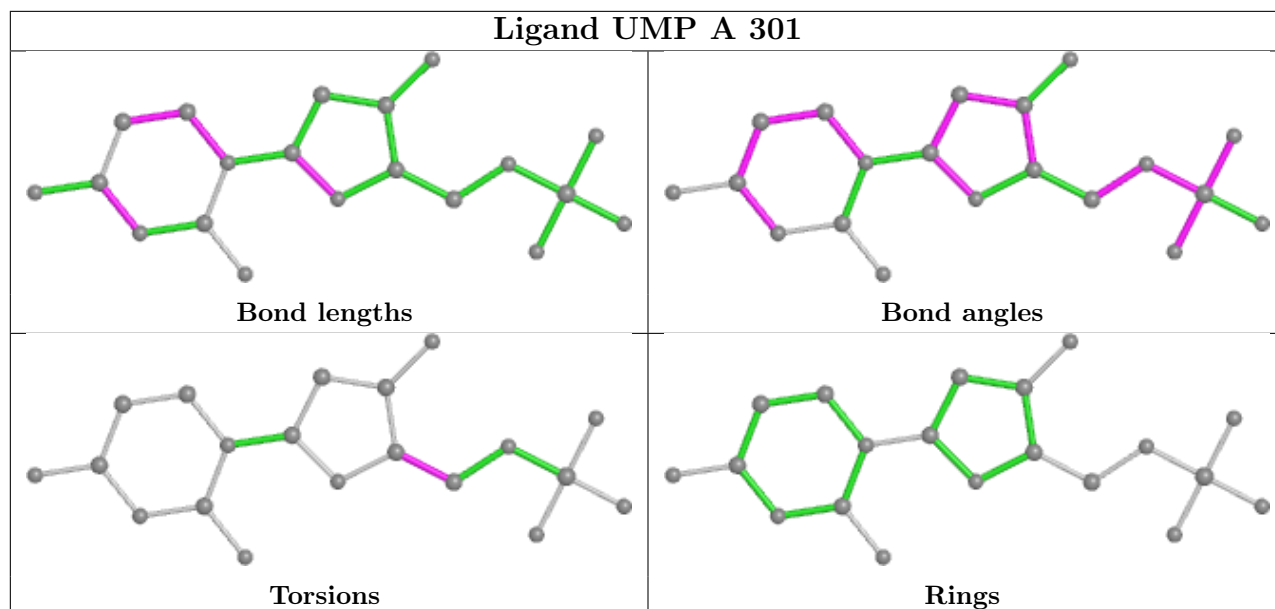
Continued on next page...

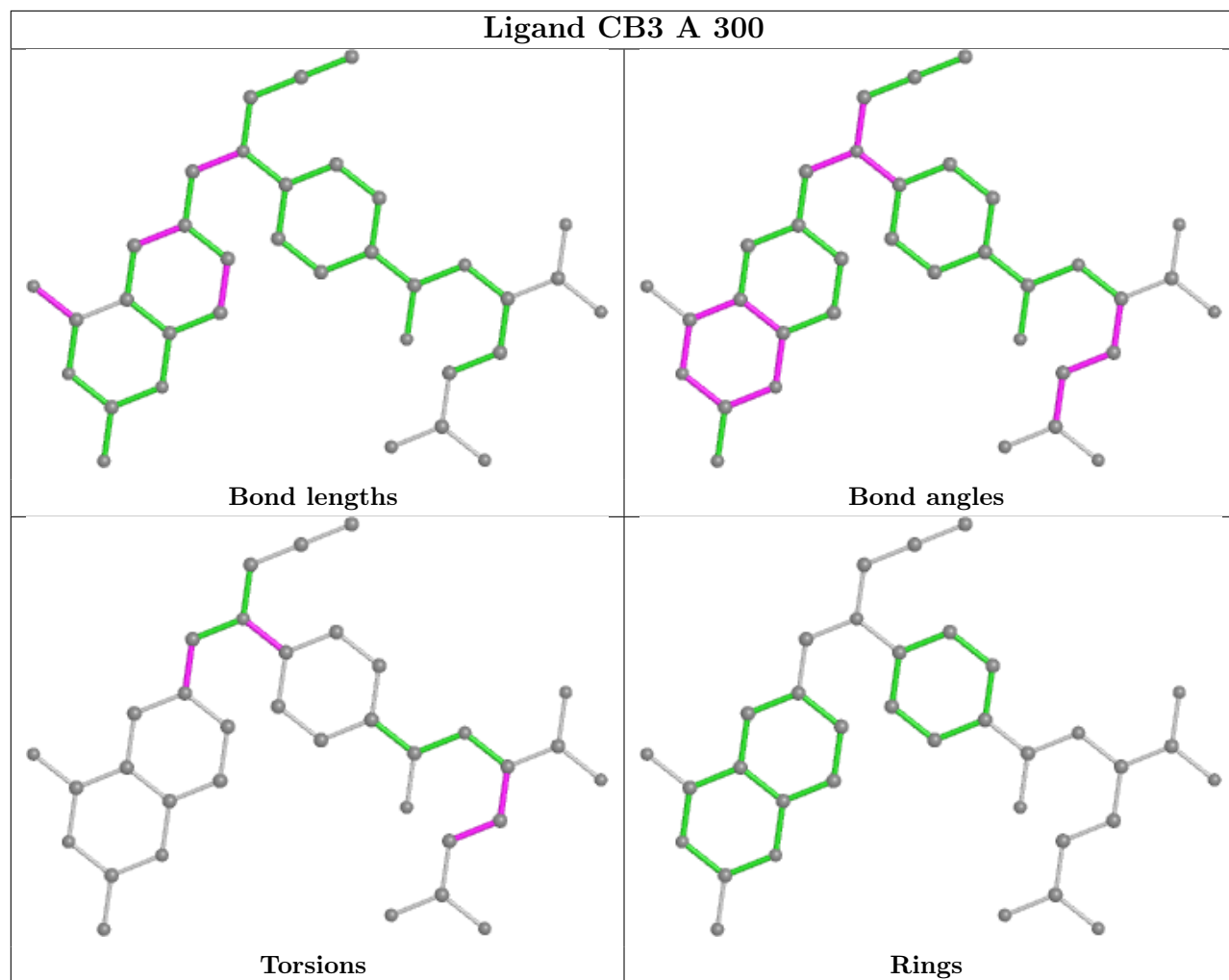
Continued from previous page...

Mol	Chain	Res	Type	Clashes	Symm-Clashes
3	A	300	CB3	2	0

The following is a two-dimensional graphical depiction of Mogul quality analysis of bond lengths, bond angles, torsion angles, and ring geometry for all instances of the Ligand of Interest. In addition, ligands with molecular weight > 250 and outliers as shown on the validation Tables will also be included. For torsion angles, if less than 5% of the Mogul distribution of torsion angles is within 10 degrees of the torsion angle in question, then that torsion angle is considered an outlier. Any bond that is central to one or more torsion angles identified as an outlier by Mogul will be highlighted in the graph. For rings, the root-mean-square deviation (RMSD) between the ring in question and similar rings identified by Mogul is calculated over all ring torsion angles. If the average RMSD is greater than 60 degrees and the minimal RMSD between the ring in question and any Mogul-identified rings is also greater than 60 degrees, then that ring is considered an outlier. The outliers are highlighted in purple. The color gray indicates Mogul did not find sufficient equivalents in the CSD to analyse the geometry.







5.7 Other polymers [i](#)

There are no such residues in this entry.

5.8 Polymer linkage issues [i](#)

There are no chain breaks in this entry.

6 Fit of model and data

6.1 Protein, DNA and RNA chains

EDS was not executed - this section is therefore empty.

6.2 Non-standard residues in protein, DNA, RNA chains

EDS was not executed - this section is therefore empty.

6.3 Carbohydrates

EDS was not executed - this section is therefore empty.

6.4 Ligands

EDS was not executed - this section is therefore empty.

6.5 Other polymers

EDS was not executed - this section is therefore empty.