



Full wwPDB X-ray Structure Validation Report ⓘ

Nov 2, 2024 – 02:31 PM EDT

PDB ID : 1WUH
Title : Three-Dimensional Structure Of The Ni-A State Of [Nife]Hydrogenase From Desulfovibrio Vulgaris Miyazaki F
Authors : Ogata, H.; Hirota, S.; Nakahara, A.; Komori, H.; Shibata, N.; Kato, T.; Kano, K.; Higuchi, Y.
Deposited on : 2004-12-07
Resolution : 1.24 Å(reported)

This is a Full wwPDB X-ray Structure Validation Report for a publicly released PDB entry.

We welcome your comments at validation@mail.wwpdb.org

A user guide is available at

<https://www.wwpdb.org/validation/2017/XrayValidationReportHelp>

with specific help available everywhere you see the ⓘ symbol.

The types of validation reports are described at

<http://www.wwpdb.org/validation/2017/FAQs#types>.

The following versions of software and data (see [references ⓘ](#)) were used in the production of this report:

MolProbity : 4.02b-467
Mogul : 2022.3.0, CSD as543be (2022)
Xtrriage (Phenix) : **NOT EXECUTED**
EDS : **NOT EXECUTED**
Percentile statistics : 20231227.v01 (using entries in the PDB archive December 27th 2023)
Ideal geometry (proteins) : Engh & Huber (2001)
Ideal geometry (DNA, RNA) : Parkinson et al. (1996)
Validation Pipeline (wwPDB-VP) : 2.39

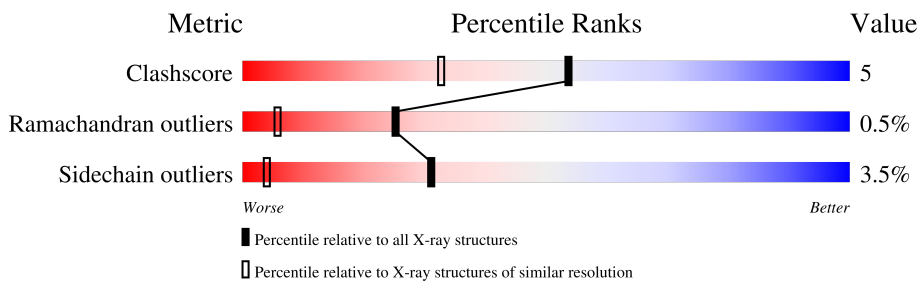
1 Overall quality at a glance

The following experimental techniques were used to determine the structure:

X-RAY DIFFRACTION

The reported resolution of this entry is 1.24 Å.

Percentile scores (ranging between 0-100) for global validation metrics of the entry are shown in the following graphic. The table shows the number of entries on which the scores are based.



Metric	Whole archive (#Entries)	Similar resolution (#Entries, resolution range(Å))
Clashscore	180529	1509 (1.26-1.22)
Ramachandran outliers	177936	1478 (1.26-1.22)
Sidechain outliers	177891	1476 (1.26-1.22)

The table below summarises the geometric issues observed across the polymeric chains and their fit to the electron density. The red, orange, yellow and green segments of the lower bar indicate the fraction of residues that contain outliers for ≥ 3 , 2, 1 and 0 types of geometric quality criteria respectively. A grey segment represents the fraction of residues that are not modelled. The numeric value for each fraction is indicated below the corresponding segment, with a dot representing fractions $\leq 5\%$.

Note EDS was not executed.

Mol	Chain	Length	Quality of chain
1	S	267	
2	L	534	

The following table lists non-polymeric compounds, carbohydrate monomers and non-standard residues in protein, DNA, RNA chains that are outliers for geometric or electron-density-fit criteria:

Mol	Type	Chain	Res	Chirality	Geometry	Clashes	Electron density
5	MPD	S	2002	-	-	X	-

2 Entry composition

There are 8 unique types of molecules in this entry. The entry contains 7108 atoms, of which 0 are hydrogens and 0 are deuteriums.

In the tables below, the ZeroOcc column contains the number of atoms modelled with zero occupancy, the AltConf column contains the number of residues with at least one atom in alternate conformation and the Trace column contains the number of residues modelled with at most 2 atoms.

- Molecule 1 is a protein called Periplasmic [NiFe] hydrogenase small subunit.

Mol	Chain	Residues	Atoms					ZeroOcc	AltConf	Trace
			Total	C	N	O	S			
1	S	267	2025	1285	342	380	18	0	3	0

- Molecule 2 is a protein called Periplasmic [NiFe] hydrogenase large subunit.

Mol	Chain	Residues	Atoms					ZeroOcc	AltConf	Trace
			Total	C	N	O	S			
2	L	534	4179	2674	725	765	15	0	0	0

There are 4 discrepancies between the modelled and reference sequences:

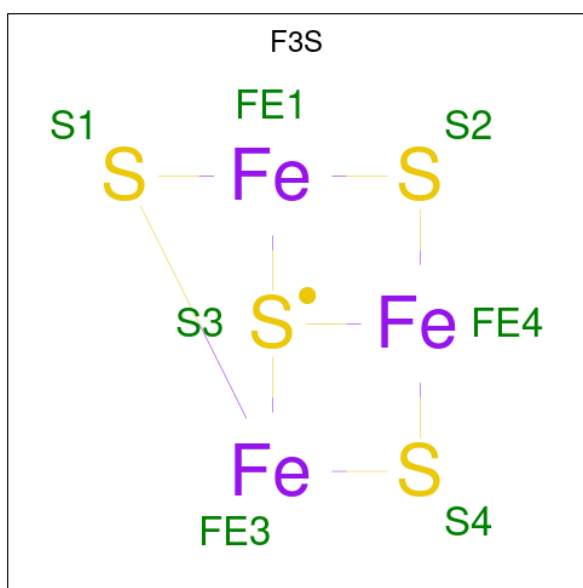
Chain	Residue	Modelled	Actual	Comment	Reference
L	84	CSO	CYS	modified residue	UNP P21852
L	514	LYS	ASN	SEE REMARK 999	UNP P21852
L	515	LEU	VAL	SEE REMARK 999	UNP P21852
L	546	CSO	CYS	modified residue	UNP P21852

- Molecule 3 is IRON/SULFUR CLUSTER (three-letter code: SF4) (formula: Fe₄S₄).



Mol	Chain	Residues	Atoms			ZeroOcc	AltConf
3	S	1	Total	Fe	S	0	0
			8	4	4		
3	S	1	Total	Fe	S	0	0
			8	4	4		

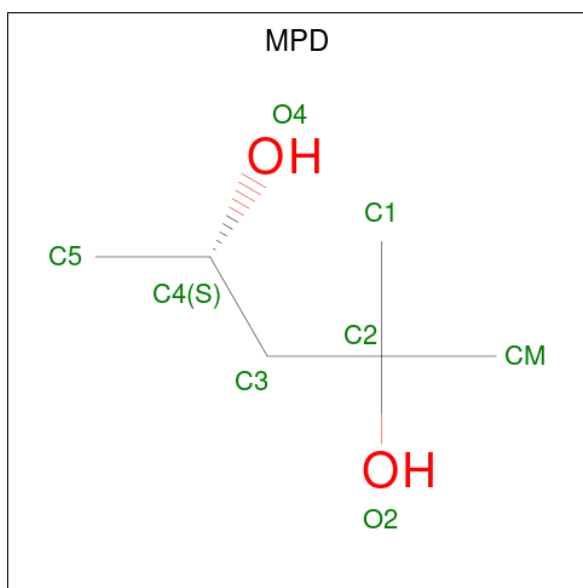
- Molecule 4 is FE3-S4 CLUSTER (three-letter code: F3S) (formula: Fe_3S_4).



Mol	Chain	Residues	Atoms			ZeroOcc	AltConf
4	S	1	Total	Fe	S	0	0
			7	3	4		

- Molecule 5 is (4S)-2-METHYL-2,4-PENTANEDIOL (three-letter code: MPD) (formula:

C₆H₁₄O₂).

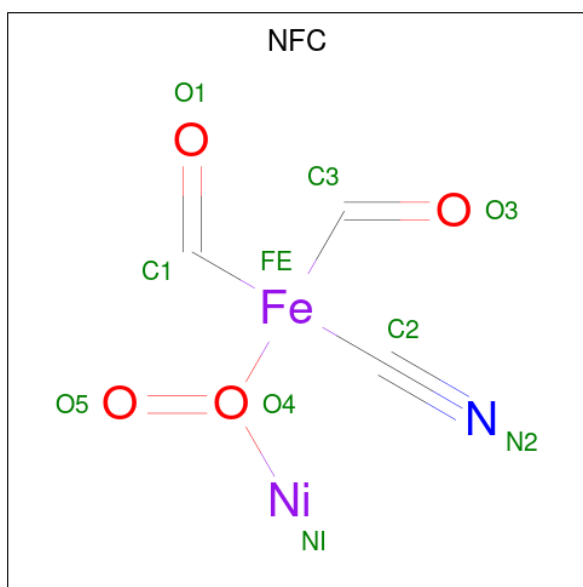


Mol	Chain	Residues	Atoms	ZeroOcc	AltConf
5	S	1	Total C O 8 6 2	0	0
5	S	1	Total C O 8 6 2	0	0

- Molecule 6 is MAGNESIUM ION (three-letter code: MG) (formula: Mg).

Mol	Chain	Residues	Atoms	ZeroOcc	AltConf
6	L	1	Total Mg 1 1	0	0

- Molecule 7 is NI-FE ACTIVE CENTER A-FORM (three-letter code: NFC) (formula: C₃H₂FeNNiO₄).



Mol	Chain	Residues	Atoms						ZeroOcc	AltConf
			Total	C	Fe	N	Ni	O		
7	L	1	10	3	1	1	1	4	0	0

- Molecule 8 is water.

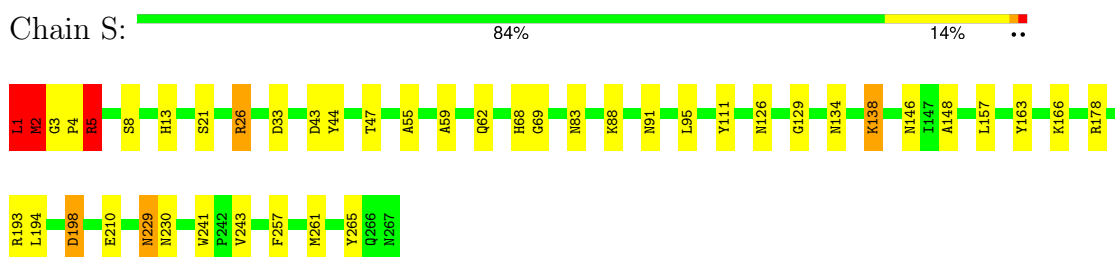
Mol	Chain	Residues	Atoms		ZeroOcc	AltConf
8	S	307	Total	O	0	0
			307	307		
8	L	547	Total	O	0	0
			547	547		

3 Residue-property plots

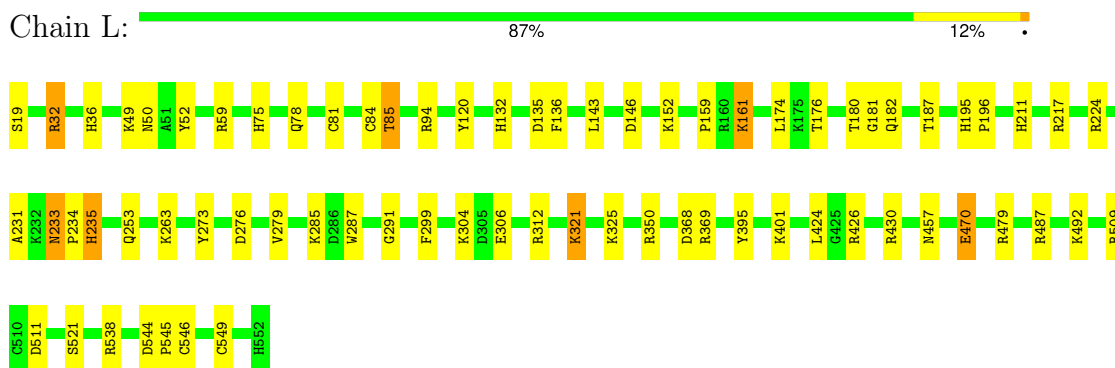
These plots are drawn for all protein, RNA, DNA and oligosaccharide chains in the entry. The first graphic for a chain summarises the proportions of the various outlier classes displayed in the second graphic. The second graphic shows the sequence view annotated by issues in geometry. Residues are color-coded according to the number of geometric quality criteria for which they contain at least one outlier: green = 0, yellow = 1, orange = 2 and red = 3 or more. Stretches of 2 or more consecutive residues without any outlier are shown as a green connector. Residues present in the sample, but not in the model, are shown in grey.

Note EDS was not executed.

- Molecule 1: Periplasmic [NiFe] hydrogenase small subunit



- Molecule 2: Periplasmic [NiFe] hydrogenase large subunit



4 Data and refinement statistics

Xtriage (Phenix) and EDS were not executed - this section is therefore incomplete.

Property	Value	Source
Space group	P 21 21 21	Depositor
Cell constants a, b, c, α , β , γ	98.23Å 126.26Å 66.44Å 90.00° 90.00° 90.00°	Depositor
Resolution (Å)	16.41 – 1.24	Depositor
% Data completeness (in resolution range)	(Not available) (16.41-1.24)	Depositor
R_{merge}	0.08	Depositor
R_{sym}	(Not available)	Depositor
Refinement program	SHELXL-97	Depositor
R, R_{free}	0.110 , 0.157	Depositor
Estimated twinning fraction	No twinning to report.	Xtriage
Total number of atoms	7108	wwPDB-VP
Average B, all atoms (Å ²)	17.0	wwPDB-VP

5 Model quality i

5.1 Standard geometry i

Bond lengths and bond angles in the following residue types are not validated in this section: CSO, MG, MPD, NFC, SF4, F3S

The Z score for a bond length (or angle) is the number of standard deviations the observed value is removed from the expected value. A bond length (or angle) with $|Z| > 5$ is considered an outlier worth inspection. RMSZ is the root-mean-square of all Z scores of the bond lengths (or angles).

Mol	Chain	Bond lengths		Bond angles	
		RMSZ	# Z >5	RMSZ	# Z >5
1	S	0.67	0/2099	1.40	22/2862 (0.8%)
2	L	0.69	0/4274	1.34	49/5809 (0.8%)
All	All	0.68	0/6373	1.36	71/8671 (0.8%)

There are no bond length outliers.

All (71) bond angle outliers are listed below:

Mol	Chain	Res	Type	Atoms	Z	Observed(°)	Ideal(°)
2	L	224	ARG	NE-CZ-NH2	26.20	133.40	120.30
1	S	26	ARG	NE-CZ-NH2	20.60	130.60	120.30
1	S	198	ASP	CB-CG-OD2	-16.45	103.49	118.30
1	S	2	MET	C-N-CA	14.07	151.84	122.30
1	S	198	ASP	CB-CG-OD1	12.91	129.92	118.30
2	L	509	ARG	NE-CZ-NH1	11.16	125.88	120.30
2	L	224	ARG	NH1-CZ-NH2	-10.71	107.62	119.40
2	L	273	TYR	CB-CG-CD1	10.21	127.13	121.00
1	S	5	ARG	NE-CZ-NH2	-9.81	115.39	120.30
2	L	430	ARG	NE-CZ-NH1	9.51	125.05	120.30
2	L	59	ARG	NE-CZ-NH1	9.25	124.92	120.30
1	S	26	ARG	NH1-CZ-NH2	-9.09	109.40	119.40
2	L	487	ARG	CD-NE-CZ	9.06	136.29	123.60
2	L	487	ARG	NE-CZ-NH2	-8.70	115.95	120.30
2	L	426	ARG	NE-CZ-NH1	8.55	124.58	120.30
1	S	193	ARG	NE-CZ-NH1	8.47	124.53	120.30
1	S	1	LEU	O-C-N	8.40	136.15	122.70
1	S	163	TYR	CB-CG-CD1	8.31	125.99	121.00
2	L	424	LEU	C-N-CA	7.89	138.88	122.30
2	L	217	ARG	NE-CZ-NH2	-7.77	116.42	120.30
1	S	95	LEU	O-C-N	-7.61	110.53	122.70
1	S	229	ASN	O-C-N	-7.28	111.05	122.70

Continued on next page...

Continued from previous page...

Mol	Chain	Res	Type	Atoms	Z	Observed(°)	Ideal(°)
2	L	78	GLN	CG-CD-OE1	7.20	135.99	121.60
2	L	196	PRO	O-C-N	-7.09	111.35	122.70
2	L	136	PHE	CD1-CE1-CZ	6.91	128.39	120.10
1	S	33	ASP	CB-CG-OD1	6.89	124.50	118.30
2	L	538	ARG	NE-CZ-NH1	6.72	123.66	120.30
1	S	148	ALA	C-N-CA	6.57	136.10	122.30
1	S	129	GLY	O-C-N	-6.55	112.22	122.70
2	L	135	ASP	CB-CG-OD2	-6.38	112.56	118.30
2	L	32	ARG	NE-CZ-NH1	6.35	123.47	120.30
2	L	136	PHE	CG-CD1-CE1	-6.32	113.85	120.80
2	L	312	ARG	NE-CZ-NH1	6.31	123.45	120.30
2	L	234	PRO	C-N-CA	6.29	137.41	121.70
2	L	85	THR	C-N-CA	6.28	137.40	121.70
2	L	287	TRP	CA-CB-CG	-6.26	101.81	113.70
2	L	369	ARG	NE-CZ-NH1	6.21	123.40	120.30
2	L	395	TYR	CG-CD2-CE2	6.17	126.24	121.30
1	S	229	ASN	C-N-CA	6.15	137.07	121.70
2	L	196	PRO	C-N-CA	6.11	136.98	121.70
2	L	424	LEU	O-C-N	-6.09	112.84	123.20
2	L	146	ASP	CB-CG-OD2	-6.08	112.83	118.30
2	L	350	ARG	CD-NE-CZ	6.02	132.03	123.60
2	L	368	ASP	CB-CG-OD2	5.82	123.54	118.30
2	L	479	ARG	NE-CZ-NH1	5.82	123.21	120.30
2	L	273	TYR	CG-CD1-CE1	5.69	125.85	121.30
2	L	159	PRO	O-C-N	-5.68	113.61	122.70
1	S	5	ARG	CD-NE-CZ	-5.66	115.68	123.60
1	S	95	LEU	C-N-CA	5.58	135.66	121.70
2	L	538	ARG	NE-CZ-NH2	-5.57	117.51	120.30
2	L	181	GLY	O-C-N	-5.46	113.97	122.70
2	L	395	TYR	CB-CG-CD2	5.43	124.26	121.00
2	L	195	HIS	CG-ND1-CE1	5.39	115.74	108.20
2	L	146	ASP	CB-CG-OD1	5.37	123.13	118.30
1	S	178	ARG	NE-CZ-NH1	5.29	122.94	120.30
2	L	263	LYS	CD-CE-NZ	5.25	123.77	111.70
2	L	299	PHE	CB-CG-CD2	5.23	124.46	120.80
1	S	138	LYS	CA-CB-CG	5.22	124.88	113.40
2	L	224	ARG	CD-NE-CZ	5.21	130.90	123.60
2	L	52	TYR	CB-CG-CD2	-5.14	117.92	121.00
1	S	178	ARG	NE-CZ-NH2	-5.12	117.74	120.30
2	L	470	GLU	CA-CB-CG	5.11	124.64	113.40
1	S	210	GLU	OE1-CD-OE2	-5.10	117.19	123.30
2	L	509	ARG	NE-CZ-NH2	-5.09	117.76	120.30

Continued on next page...

Continued from previous page...

Mol	Chain	Res	Type	Atoms	Z	Observed(°)	Ideal(°)
2	L	511	ASP	CB-CG-OD2	5.07	122.86	118.30
1	S	44	TYR	CB-CG-CD2	5.06	124.03	121.00
2	L	136	PHE	CG-CD2-CE2	5.05	126.36	120.80
2	L	217	ARG	NH1-CZ-NH2	5.04	124.95	119.40
2	L	401	LYS	O-C-N	-5.04	114.63	122.70
2	L	94	ARG	NE-CZ-NH1	-5.02	117.79	120.30
2	L	120	TYR	CA-CB-CG	5.01	122.92	113.40

There are no chirality outliers.

There are no planarity outliers.

5.2 Too-close contacts

In the following table, the Non-H and H(model) columns list the number of non-hydrogen atoms and hydrogen atoms in the chain respectively. The H(added) column lists the number of hydrogen atoms added and optimized by MolProbity. The Clashes column lists the number of clashes within the asymmetric unit, whereas Symm-Clashes lists symmetry-related clashes.

Mol	Chain	Non-H	H(model)	H(added)	Clashes	Symm-Clashes
1	S	2025	0	1947	34	0
2	L	4179	0	4127	31	0
3	S	16	0	0	0	0
4	S	7	0	0	0	0
5	S	16	0	28	8	0
6	L	1	0	0	0	0
7	L	10	0	0	0	0
8	L	547	0	0	10	0
8	S	307	0	0	9	0
All	All	7108	0	6102	59	0

The all-atom clashscore is defined as the number of clashes found per 1000 atoms (including hydrogen atoms). The all-atom clashscore for this structure is 5.

All (59) close contacts within the same asymmetric unit are listed below, sorted by their clash magnitude.

Atom-1	Atom-2	Interatomic distance (Å)	Clash overlap (Å)
1:S:2:MET:HB2	2:L:182:GLN:HE21	1.24	1.01
1:S:2:MET:HA	2:L:182:GLN:HG2	1.47	0.93
1:S:146:ASN:HD21	5:S:2002:MPD:H13	1.40	0.87
2:L:546:CSO:OD	2:L:549:CYS:CB	2.25	0.83

Continued on next page...

Continued from previous page...

Atom-1	Atom-2	Interatomic distance (Å)	Clash overlap (Å)
2:L:161:LYS:HG2	8:L:5321:HOH:O	1.82	0.79
2:L:81:CYS:HB3	2:L:84:CSO:OD	1.85	0.76
1:S:194:LEU:HD23	8:S:5603:HOH:O	1.85	0.76
2:L:81:CYS:CB	2:L:84:CSO:OD	2.32	0.75
2:L:176:THR:O	2:L:180:THR:HG23	1.91	0.70
1:S:2:MET:HG2	1:S:8:SER:HB2	1.71	0.70
5:S:2002:MPD:H52	8:S:5706:HOH:O	1.95	0.67
1:S:5:ARG:HB3	2:L:182:GLN:OE1	1.95	0.67
5:S:2001:MPD:H12	8:S:5603:HOH:O	1.96	0.66
1:S:68:HIS:HB2	8:S:5550:HOH:O	1.95	0.66
1:S:2:MET:HB3	1:S:43:ASP:OD1	1.96	0.66
1:S:198:ASP:OD2	8:S:5600:HOH:O	2.13	0.65
2:L:285:LYS:HB2	8:L:5692:HOH:O	1.97	0.64
1:S:1:LEU:HD21	1:S:59:ALA:O	1.96	0.64
1:S:257:PHE:HB2	1:S:261[B]:MET:HG2	1.80	0.63
1:S:1:LEU:HD11	1:S:62:GLN:HB3	1.81	0.62
2:L:546:CSO:OD	2:L:549:CYS:HB2	1.90	0.62
2:L:233:ASN:C	2:L:233:ASN:HD22	2.06	0.59
1:S:134:ASN:HD22	5:S:2002:MPD:C1	2.17	0.58
1:S:2:MET:HB2	2:L:182:GLN:NE2	2.07	0.58
2:L:211:HIS:HE1	8:L:5188:HOH:O	1.86	0.57
5:S:2002:MPD:HM2	8:S:5298:HOH:O	2.03	0.57
5:S:2002:MPD:H11	8:S:5298:HOH:O	2.04	0.57
2:L:211:HIS:HD2	2:L:276:ASP:OD2	1.89	0.56
1:S:1:LEU:HA	2:L:187:THR:OG1	2.05	0.55
2:L:36:HIS:HD2	8:L:5093:HOH:O	1.89	0.55
2:L:546:CSO:OD	2:L:549:CYS:N	2.40	0.55
1:S:146:ASN:ND2	5:S:2002:MPD:H13	2.16	0.54
1:S:265:TYR:OH	2:L:75:HIS:HE1	1.90	0.53
2:L:75:HIS:HD2	8:L:5017:HOH:O	1.91	0.53
1:S:134:ASN:HD22	5:S:2002:MPD:H12	1.73	0.53
1:S:55:ALA:HB2	8:L:5501:HOH:O	2.08	0.52
2:L:492:LYS:HD2	8:L:5678:HOH:O	2.08	0.52
2:L:306:GLU:HB2	8:L:5648:HOH:O	2.10	0.52
1:S:2:MET:HE2	1:S:3:GLY:O	2.10	0.52
1:S:166:LYS:HD3	8:S:5427:HOH:O	2.13	0.48
1:S:1:LEU:HD11	1:S:62:GLN:CB	2.44	0.47
1:S:2:MET:HA	2:L:182:GLN:CG	2.32	0.47
1:S:1:LEU:HG	2:L:187:THR:HG21	1.98	0.46
1:S:13:HIS:HE1	1:S:21:SER:OG	1.98	0.45
1:S:241:TRP:CH2	1:S:243:VAL:HB	2.51	0.45

Continued on next page...

Continued from previous page...

Atom-1	Atom-2	Interatomic distance (Å)	Clash overlap (Å)
1:S:2:MET:HG2	1:S:8:SER:CB	2.44	0.45
2:L:85:THR:OG1	2:L:235:HIS:HD2	2.01	0.44
1:S:88:LYS:NZ	8:L:5732:HOH:O	2.49	0.43
1:S:69:GLY:N	8:S:5550:HOH:O	2.52	0.42
2:L:321:LYS:N	2:L:321:LYS:HD3	2.34	0.42
1:S:26:ARG:HH21	2:L:233:ASN:HD21	1.68	0.41
2:L:291:GLY:HA2	2:L:521:SER:O	2.19	0.41
1:S:1:LEU:N	1:S:62:GLN:OE1	2.53	0.41
2:L:180:THR:HG22	8:L:5631:HOH:O	2.21	0.40
2:L:544:ASP:N	2:L:545:PRO:HD3	2.36	0.40
1:S:2:MET:CG	1:S:8:SER:HB2	2.44	0.40
1:S:47:THR:O	2:L:32:ARG:HA	2.21	0.40
1:S:111:TYR:CE1	1:S:157:LEU:HB2	2.56	0.40
2:L:143:LEU:CD2	2:L:174:LEU:HD23	2.51	0.40

There are no symmetry-related clashes.

5.3 Torsion angles [i](#)

5.3.1 Protein backbone [i](#)

In the following table, the Percentiles column shows the percent Ramachandran outliers of the chain as a percentile score with respect to all X-ray entries followed by that with respect to entries of similar resolution.

The Analysed column shows the number of residues for which the backbone conformation was analysed, and the total number of residues.

Mol	Chain	Analysed	Favoured	Allowed	Outliers	Percentiles	
1	S	268/267 (100%)	260 (97%)	6 (2%)	2 (1%)	19	3
2	L	530/534 (99%)	519 (98%)	9 (2%)	2 (0%)	30	9
All	All	798/801 (100%)	779 (98%)	15 (2%)	4 (0%)	25	6

All (4) Ramachandran outliers are listed below:

Mol	Chain	Res	Type
1	S	5	ARG
1	S	4	PRO
2	L	231	ALA
2	L	235	HIS

5.3.2 Protein sidechains [i](#)

In the following table, the Percentiles column shows the percent sidechain outliers of the chain as a percentile score with respect to all X-ray entries followed by that with respect to entries of similar resolution.

The Analysed column shows the number of residues for which the sidechain conformation was analysed, and the total number of residues.

Mol	Chain	Analysed	Rotameric	Outliers	Percentiles	
1	S	216/213 (101%)	207 (96%)	9 (4%)	25	2
2	L	436/436 (100%)	422 (97%)	14 (3%)	34	5
All	All	652/649 (100%)	629 (96%)	23 (4%)	31	4

All (23) residues with a non-rotameric sidechain are listed below:

Mol	Chain	Res	Type
1	S	1	LEU
1	S	2	MET
1	S	5	ARG
1	S	83	ASN
1	S	91	ASN
1	S	126	ASN
1	S	138	LYS
1	S	229	ASN
1	S	230	ASN
2	L	19	SER
2	L	49	LYS
2	L	50	ASN
2	L	132	HIS
2	L	152	LYS
2	L	161	LYS
2	L	233	ASN
2	L	253	GLN
2	L	279	VAL
2	L	304	LYS
2	L	321	LYS
2	L	325	LYS
2	L	457	ASN
2	L	470	GLU

Sometimes sidechains can be flipped to improve hydrogen bonding and reduce clashes. All (23) such sidechains are listed below:

Mol	Chain	Res	Type
1	S	13	HIS
1	S	126	ASN
1	S	139	HIS
1	S	190	GLN
1	S	230	ASN
1	S	267	ASN
2	L	36	HIS
2	L	50	ASN
2	L	75	HIS
2	L	78	GLN
2	L	113	ASN
2	L	132	HIS
2	L	205	ASN
2	L	211	HIS
2	L	233	ASN
2	L	235	HIS
2	L	334	GLN
2	L	390	GLN
2	L	446	GLN
2	L	451	ASN
2	L	457	ASN
2	L	476	ASN
2	L	513	ASN

5.3.3 RNA [i](#)

There are no RNA molecules in this entry.

5.4 Non-standard residues in protein, DNA, RNA chains [i](#)

2 non-standard protein/DNA/RNA residues are modelled in this entry.

In the following table, the Counts columns list the number of bonds (or angles) for which Mogul statistics could be retrieved, the number of bonds (or angles) that are observed in the model and the number of bonds (or angles) that are defined in the Chemical Component Dictionary. The Link column lists molecule types, if any, to which the group is linked. The Z score for a bond length (or angle) is the number of standard deviations the observed value is removed from the expected value. A bond length (or angle) with $|Z| > 2$ is considered an outlier worth inspection. RMSZ is the root-mean-square of all Z scores of the bond lengths (or angles).

Mol	Type	Chain	Res	Link	Bond lengths			Bond angles		
					Counts	RMSZ	$\# Z > 2$	Counts	RMSZ	$\# Z > 2$
2	CSO	L	84	2,7	3,6,7	0.96	0	1,6,8	1.07	0
2	CSO	L	546	2,7	3,6,7	0.83	0	1,6,8	1.16	0

In the following table, the Chirals column lists the number of chiral outliers, the number of chiral centers analysed, the number of these observed in the model and the number defined in the Chemical Component Dictionary. Similar counts are reported in the Torsion and Rings columns. '-' means no outliers of that kind were identified.

Mol	Type	Chain	Res	Link	Chirals	Torsions	Rings
2	CSO	L	84	2,7	-	0/1/5/7	-
2	CSO	L	546	2,7	-	0/1/5/7	-

There are no bond length outliers.

There are no bond angle outliers.

There are no chirality outliers.

There are no torsion outliers.

There are no ring outliers.

2 monomers are involved in 5 short contacts:

Mol	Chain	Res	Type	Clashes	Symm-Clashes
2	L	84	CSO	2	0
2	L	546	CSO	3	0

5.5 Carbohydrates [i](#)

There are no oligosaccharides in this entry.

5.6 Ligand geometry [i](#)

Of 7 ligands modelled in this entry, 1 is monoatomic - leaving 6 for Mogul analysis.

In the following table, the Counts columns list the number of bonds (or angles) for which Mogul statistics could be retrieved, the number of bonds (or angles) that are observed in the model and the number of bonds (or angles) that are defined in the Chemical Component Dictionary. The Link column lists molecule types, if any, to which the group is linked. The Z score for a bond length (or angle) is the number of standard deviations the observed value is removed from the expected value. A bond length (or angle) with $|Z| > 2$ is considered an outlier worth inspection. RMSZ is the root-mean-square of all Z scores of the bond lengths (or angles).

Mol	Type	Chain	Res	Link	Bond lengths			Bond angles		
					Counts	RMSZ	$\# Z > 2$	Counts	RMSZ	$\# Z > 2$
5	MPD	S	2002	-	7,7,7	0.60	0	9,10,10	1.83	2 (22%)
4	F3S	S	1003	1	0,9,9	-	-	-	-	-
5	MPD	S	2001	-	7,7,7	0.80	0	9,10,10	3.43	4 (44%)
3	SF4	S	1002	1	0,12,12	-	-	-	-	-

Mol	Type	Chain	Res	Link	Bond lengths			Bond angles		
					Counts	RMSZ	# Z > 2	Counts	RMSZ	# Z > 2
7	NFC	L	1004	2	1,9,9	1.54	0	-		
3	SF4	S	1001	1	0,12,12	-	-	-		

In the following table, the Chirals column lists the number of chiral outliers, the number of chiral centers analysed, the number of these observed in the model and the number defined in the Chemical Component Dictionary. Similar counts are reported in the Torsion and Rings columns. '-' means no outliers of that kind were identified.

Mol	Type	Chain	Res	Link	Chirals	Torsions	Rings
5	MPD	S	2002	-	-	1/5/5/5	-
4	F3S	S	1003	1	-	-	0/3/3/3
5	MPD	S	2001	-	-	0/5/5/5	-
3	SF4	S	1002	1	-	-	0/6/5/5
3	SF4	S	1001	1	-	-	0/6/5/5

There are no bond length outliers.

All (6) bond angle outliers are listed below:

Mol	Chain	Res	Type	Atoms	Z	Observed(°)	Ideal(°)
5	S	2001	MPD	O2-C2-C1	-8.16	82.54	107.99
5	S	2002	MPD	CM-C2-C1	4.64	121.02	110.63
5	S	2001	MPD	CM-C2-C1	4.03	119.64	110.63
5	S	2001	MPD	C5-C4-C3	2.72	124.30	111.67
5	S	2001	MPD	C1-C2-C3	2.36	120.37	110.20
5	S	2002	MPD	O2-C2-C1	-2.27	100.91	107.99

There are no chirality outliers.

All (1) torsion outliers are listed below:

Mol	Chain	Res	Type	Atoms
5	S	2002	MPD	C1-C2-C3-C4

There are no ring outliers.

2 monomers are involved in 8 short contacts:

Mol	Chain	Res	Type	Clashes	Symm-Clashes
5	S	2002	MPD	7	0
5	S	2001	MPD	1	0

5.7 Other polymers [i](#)

There are no such residues in this entry.

5.8 Polymer linkage issues [i](#)

There are no chain breaks in this entry.

6 Fit of model and data [i](#)

6.1 Protein, DNA and RNA chains [i](#)

EDS was not executed - this section is therefore empty.

6.2 Non-standard residues in protein, DNA, RNA chains [i](#)

EDS was not executed - this section is therefore empty.

6.3 Carbohydrates [i](#)

EDS was not executed - this section is therefore empty.

6.4 Ligands [i](#)

EDS was not executed - this section is therefore empty.

6.5 Other polymers [i](#)

EDS was not executed - this section is therefore empty.