



Full wwPDB X-ray Structure Validation Report ⓘ

Feb 5, 2024 – 04:54 AM EST

PDB ID : 1U0G
Title : Crystal structure of mouse phosphoglucose isomerase in complex with erythrose 4-phosphate
Authors : Solomons, J.T.G.; Zimmerly, E.M.; Burns, S.; Krishnamurthy, N.; Swan, M.K.; Krings, S.; Muirhead, H.; Chirgwin, J.; Davies, C.
Deposited on : 2004-07-13
Resolution : 1.70 Å(reported)

This is a Full wwPDB X-ray Structure Validation Report for a publicly released PDB entry.

We welcome your comments at validation@mail.wwpdb.org

A user guide is available at

<https://www.wwpdb.org/validation/2017/XrayValidationReportHelp>

with specific help available everywhere you see the ⓘ symbol.

The types of validation reports are described at

<http://www.wwpdb.org/validation/2017/FAQs#types>.

The following versions of software and data (see [references ⓘ](#)) were used in the production of this report:

MolProbity : 4.02b-467
Mogul : 1.8.5 (274361), CSD as541be (2020)
Xtriage (Phenix) : 1.13
EDS : 2.36
Percentile statistics : 20191225.v01 (using entries in the PDB archive December 25th 2019)
Refmac : 5.8.0158
CCP4 : 7.0.044 (Gargrove)
Ideal geometry (proteins) : Engh & Huber (2001)
Ideal geometry (DNA, RNA) : Parkinson et al. (1996)
Validation Pipeline (wwPDB-VP) : 2.36

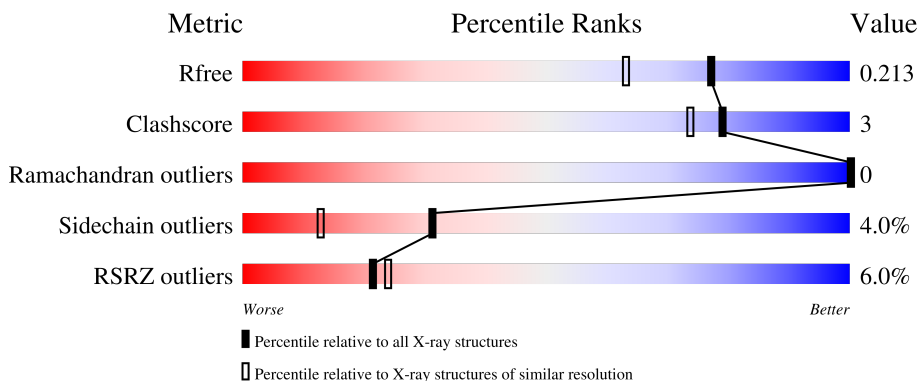
1 Overall quality at a glance

The following experimental techniques were used to determine the structure:

X-RAY DIFFRACTION

The reported resolution of this entry is 1.70 Å.

Percentile scores (ranging between 0-100) for global validation metrics of the entry are shown in the following graphic. The table shows the number of entries on which the scores are based.



Metric	Whole archive (#Entries)	Similar resolution (#Entries, resolution range(Å))
R_{free}	130704	4298 (1.70-1.70)
Clashscore	141614	4695 (1.70-1.70)
Ramachandran outliers	138981	4610 (1.70-1.70)
Sidechain outliers	138945	4610 (1.70-1.70)
RSRZ outliers	127900	4222 (1.70-1.70)

The table below summarises the geometric issues observed across the polymeric chains and their fit to the electron density. The red, orange, yellow and green segments of the lower bar indicate the fraction of residues that contain outliers for ≥ 3 , 2, 1 and 0 types of geometric quality criteria respectively. A grey segment represents the fraction of residues that are not modelled. The numeric value for each fraction is indicated below the corresponding segment, with a dot representing fractions $\leq 5\%$. The upper red bar (where present) indicates the fraction of residues that have poor fit to the electron density. The numeric value is given above the bar.

Mol	Chain	Length	Quality of chain
1	A	564	 5% 87% 10% ..
1	B	564	 6% 90% 9% .

2 Entry composition

There are 6 unique types of molecules in this entry. The entry contains 9783 atoms, of which 0 are hydrogens and 0 are deuteriums.

In the tables below, the ZeroOcc column contains the number of atoms modelled with zero occupancy, the AltConf column contains the number of residues with at least one atom in alternate conformation and the Trace column contains the number of residues modelled with at most 2 atoms.

- Molecule 1 is a protein called Glucose-6-phosphate isomerase.

Mol	Chain	Residues	Atoms					ZeroOcc	AltConf	Trace
			Total	C	N	O	S			
1	A	556	4416	2823	764	811	18	0	4	0
1	B	556	4418	2823	767	810	18	0	6	0

There are 14 discrepancies between the modelled and reference sequences:

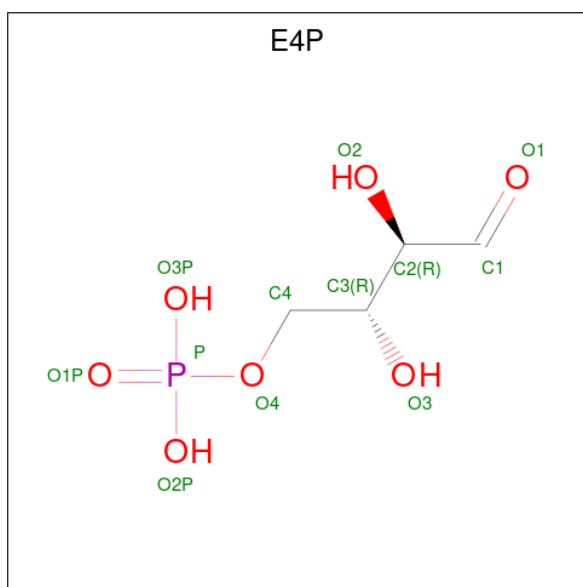
Chain	Residue	Modelled	Actual	Comment	Reference
A	263	LEU	PHE	SEE REMARK 999	UNP P06745
A	558	HIS	-	expression tag	UNP P06745
A	559	HIS	-	expression tag	UNP P06745
A	560	HIS	-	expression tag	UNP P06745
A	561	HIS	-	expression tag	UNP P06745
A	562	HIS	-	expression tag	UNP P06745
A	563	HIS	-	expression tag	UNP P06745
B	263	LEU	PHE	SEE REMARK 999	UNP P06745
B	558	HIS	-	expression tag	UNP P06745
B	559	HIS	-	expression tag	UNP P06745
B	560	HIS	-	expression tag	UNP P06745
B	561	HIS	-	expression tag	UNP P06745
B	562	HIS	-	expression tag	UNP P06745
B	563	HIS	-	expression tag	UNP P06745

- Molecule 2 is SULFATE ION (three-letter code: SO4) (formula: O₄S).



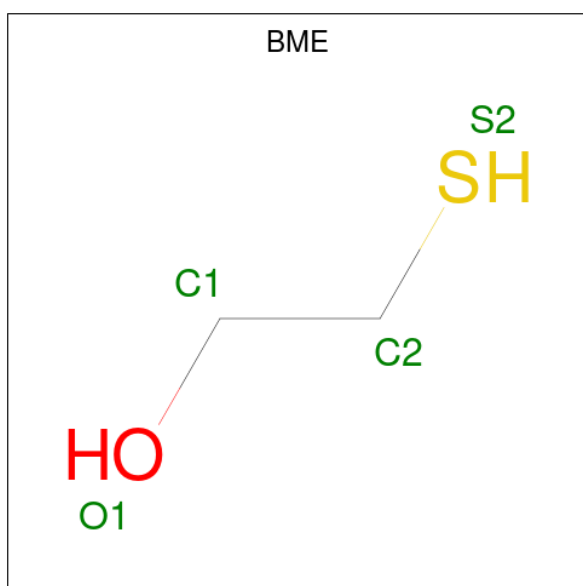
Mol	Chain	Residues	Atoms			ZeroOcc	AltConf
2	A	1	Total	O	S	0	0
			5	4	1		
2	A	1	Total	O	S	0	0
			5	4	1		
2	A	1	Total	O	S	0	0
			5	4	1		
2	B	1	Total	O	S	0	0
			5	4	1		
2	B	1	Total	O	S	0	0
			5	4	1		
2	B	1	Total	O	S	0	0
			5	4	1		

- Molecule 3 is ERYTHROSE-4-PHOSPHATE (three-letter code: E4P) (formula: C₄H₉O₇P).



Mol	Chain	Residues	Atoms				ZeroOcc	AltConf
3	A	1	Total	C	O	P	0	1
			13	4	8	1		
3	B	1	Total	C	O	P	0	1
			13	4	8	1		

- Molecule 4 is BETA-MERCAPTOETHANOL (three-letter code: BME) (formula: C_2H_6OS).



Mol	Chain	Residues	Atoms				ZeroOcc	AltConf
4	A	1	Total	C	O	S	0	0
			4	2	1	1		
4	A	1	Total	C	O	S	0	0
			4	2	1	1		

Continued on next page...

Continued from previous page...

Mol	Chain	Residues	Atoms				ZeroOcc	AltConf
4	A	1	Total	C	O	S	0	0
			4	2	1	1		
4	B	1	Total	C	O	S	0	0
			4	2	1	1		
4	B	1	Total	C	O	S	0	0
			4	2	1	1		

- Molecule 5 is GLYCEROL (three-letter code: GOL) (formula: $C_3H_8O_3$).



Mol	Chain	Residues	Atoms			ZeroOcc	AltConf
5	A	1	Total	C	O	0	0
			6	3	3		
5	A	1	Total	C	O	0	0
			6	3	3		
5	A	1	Total	C	O	0	0
			6	3	3		
5	A	1	Total	C	O	0	0
			6	3	3		
5	A	1	Total	C	O	0	0
			6	3	3		
5	B	1	Total	C	O	0	0
			6	3	3		

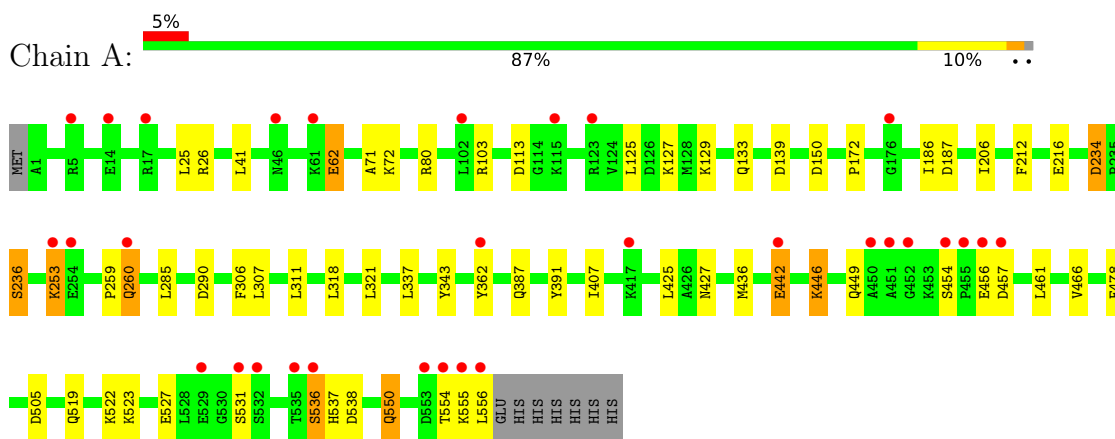
- Molecule 6 is water.

Mol	Chain	Residues	Atoms		ZeroOcc	AltConf
6	A	403	Total 403	O 403	0	0
6	B	429	Total 429	O 429	0	0

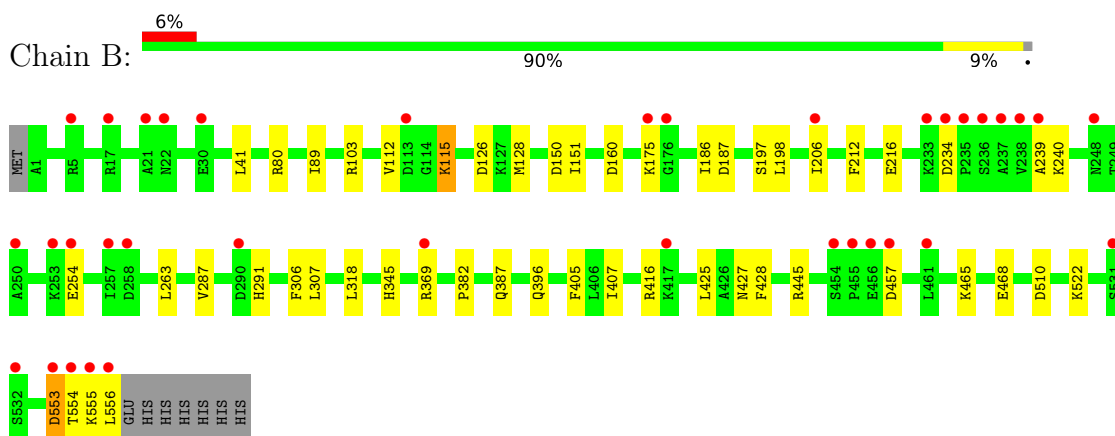
3 Residue-property plots [i](#)

These plots are drawn for all protein, RNA, DNA and oligosaccharide chains in the entry. The first graphic for a chain summarises the proportions of the various outlier classes displayed in the second graphic. The second graphic shows the sequence view annotated by issues in geometry and electron density. Residues are color-coded according to the number of geometric quality criteria for which they contain at least one outlier: green = 0, yellow = 1, orange = 2 and red = 3 or more. A red dot above a residue indicates a poor fit to the electron density ($RSRZ > 2$). Stretches of 2 or more consecutive residues without any outlier are shown as a green connector. Residues present in the sample, but not in the model, are shown in grey.

- Molecule 1: Glucose-6-phosphate isomerase



- Molecule 1: Glucose-6-phosphate isomerase



4 Data and refinement statistics

Property	Value	Source
Space group	P 1 21 1	Depositor
Cell constants a, b, c, α , β , γ	68.80Å 115.60Å 73.20Å 90.00° 100.20° 90.00°	Depositor
Resolution (Å)	50.00 – 1.70 24.39 – 1.70	Depositor EDS
% Data completeness (in resolution range)	97.5 (50.00-1.70) 96.0 (24.39-1.70)	Depositor EDS
R_{merge}	0.07	Depositor
R_{sym}	0.07	Depositor
$\langle I/\sigma(I) \rangle$ ¹	1.58 (at 1.70Å)	Xtrriage
Refinement program	REFMAC 5.1.24	Depositor
R, R_{free}	0.190 , 0.215 0.191 , 0.213	Depositor DCC
R_{free} test set	5943 reflections (5.01%)	wwPDB-VP
Wilson B-factor (Å ²)	19.9	Xtrriage
Anisotropy	0.172	Xtrriage
Bulk solvent k_{sol} (e/Å ³), B_{sol} (Å ²)	0.43 , 55.2	EDS
L-test for twinning ²	$\langle L \rangle = 0.52$, $\langle L^2 \rangle = 0.35$	Xtrriage
Estimated twinning fraction	No twinning to report.	Xtrriage
F_o, F_c correlation	0.95	EDS
Total number of atoms	9783	wwPDB-VP
Average B, all atoms (Å ²)	19.0	wwPDB-VP

Xtrriage's analysis on translational NCS is as follows: *The largest off-origin peak in the Patterson function is 5.21% of the height of the origin peak. No significant pseudotranslation is detected.*

¹Intensities estimated from amplitudes.

²Theoretical values of $\langle |L| \rangle$, $\langle L^2 \rangle$ for acentric reflections are 0.5, 0.333 respectively for untwinned datasets, and 0.375, 0.2 for perfectly twinned datasets.

5 Model quality i

5.1 Standard geometry i

Bond lengths and bond angles in the following residue types are not validated in this section: BME, SO4, GOL, E4P

The Z score for a bond length (or angle) is the number of standard deviations the observed value is removed from the expected value. A bond length (or angle) with $|Z| > 5$ is considered an outlier worth inspection. RMSZ is the root-mean-square of all Z scores of the bond lengths (or angles).

Mol	Chain	Bond lengths		Bond angles	
		RMSZ	# Z >5	RMSZ	# Z >5
1	A	0.39	0/4545	0.66	10/6153 (0.2%)
1	B	0.39	0/4563	0.65	8/6174 (0.1%)
All	All	0.39	0/9108	0.66	18/12327 (0.1%)

There are no bond length outliers.

All (18) bond angle outliers are listed below:

Mol	Chain	Res	Type	Atoms	Z	Observed(°)	Ideal(°)
1	A	290	ASP	CB-CG-OD2	7.26	124.83	118.30
1	B	234	ASP	CB-CG-OD2	6.55	124.20	118.30
1	B	126	ASP	CB-CG-OD2	6.45	124.11	118.30
1	B	187	ASP	CB-CG-OD2	6.43	124.09	118.30
1	B	457	ASP	CB-CG-OD2	6.16	123.84	118.30
1	A	187	ASP	CB-CG-OD2	6.00	123.70	118.30
1	A	234	ASP	CB-CG-OD2	5.89	123.60	118.30
1	A	139[A]	ASP	CB-CG-OD2	5.85	123.57	118.30
1	A	139[B]	ASP	CB-CG-OD2	5.85	123.57	118.30
1	A	538	ASP	CB-CG-OD2	5.65	123.39	118.30
1	A	113	ASP	CB-CG-OD2	5.65	123.38	118.30
1	B	553	ASP	CB-CG-OD2	5.62	123.35	118.30
1	B	150	ASP	CB-CG-OD2	5.59	123.33	118.30
1	A	457	ASP	CB-CG-OD2	5.56	123.30	118.30
1	B	160	ASP	CB-CG-OD2	5.46	123.22	118.30
1	B	510	ASP	CB-CG-OD2	5.26	123.03	118.30
1	A	505	ASP	CB-CG-OD2	5.24	123.02	118.30
1	A	150	ASP	CB-CG-OD2	5.18	122.96	118.30

There are no chirality outliers.

There are no planarity outliers.

5.2 Too-close contacts

In the following table, the Non-H and H(model) columns list the number of non-hydrogen atoms and hydrogen atoms in the chain respectively. The H(added) column lists the number of hydrogen atoms added and optimized by MolProbity. The Clashes column lists the number of clashes within the asymmetric unit, whereas Symm-Clashes lists symmetry-related clashes.

Mol	Chain	Non-H	H(model)	H(added)	Clashes	Symm-Clashes
1	A	4416	0	4396	27	0
1	B	4418	0	4400	24	0
2	A	15	0	0	0	0
2	B	20	0	0	0	0
3	A	13	0	2	0	0
3	B	13	0	2	0	0
4	A	12	0	18	2	0
4	B	8	0	12	1	0
5	A	30	0	40	2	0
5	B	6	0	8	0	0
6	A	403	0	0	4	0
6	B	429	0	0	4	0
All	All	9783	0	8878	50	0

The all-atom clashscore is defined as the number of clashes found per 1000 atoms (including hydrogen atoms). The all-atom clashscore for this structure is 3.

All (50) close contacts within the same asymmetric unit are listed below, sorted by their clash magnitude.

Atom-1	Atom-2	Interatomic distance (Å)	Clash overlap (Å)
4:A:964:BME:H21	1:B:369:ARG:HD2	1.69	0.73
1:B:128:MET:HG2	1:B:263:LEU:HD13	1.78	0.65
1:B:291:HIS:HE1	6:B:1176:HOH:O	1.84	0.61
1:B:151:ILE:CG2	1:B:206:ILE:HD12	2.32	0.59
1:A:387:GLN:HE22	1:A:427:ASN:HB3	1.66	0.58
1:B:80:ARG:HD2	1:B:307:LEU:HA	1.84	0.57
1:B:387:GLN:HE22	1:B:427:ASN:HB3	1.70	0.57
1:A:442:GLU:H	1:A:442:GLU:CD	2.07	0.56
1:B:186:ILE:HB	1:B:216:GLU:HG3	1.89	0.55
1:B:554:THR:HG21	6:B:1257:HOH:O	2.07	0.53
1:A:186:ILE:HB	1:A:216:GLU:HG3	1.91	0.53
1:B:112:VAL:O	1:B:115:LYS:HG3	2.08	0.53
1:A:80:ARG:HD2	1:A:307:LEU:HA	1.91	0.52
1:A:550:GLN:NE2	6:A:1206:HOH:O	2.43	0.51
5:A:975:GOL:H12	6:A:1221:HOH:O	2.09	0.51

Continued on next page...

Continued from previous page...

Atom-1	Atom-2	Interatomic distance (Å)	Clash overlap (Å)
1:A:407:ILE:HD13	1:A:425:LEU:HD23	1.93	0.50
1:B:89:ILE:HG22	4:B:966:BME:H11	1.94	0.50
1:A:80:ARG:HG3	1:A:306:PHE:CE2	2.47	0.49
1:B:151:ILE:CG2	1:B:206:ILE:CD1	2.90	0.49
1:A:362:TYR:CD2	1:B:396:GLN:HG2	2.47	0.49
1:B:468:GLU:HG2	6:B:1160:HOH:O	2.13	0.48
1:A:25:LEU:HB3	1:A:436:MET:HG2	1.97	0.47
1:A:125:LEU:HB3	5:A:973:GOL:H31	1.97	0.46
1:A:253:LYS:HG3	1:A:259:PRO:HD3	1.98	0.46
1:B:41:LEU:HD11	1:B:318:LEU:HD12	1.96	0.46
1:A:522:LYS:HG3	6:A:1315:HOH:O	2.16	0.46
1:A:62:GLU:HG3	6:A:1235:HOH:O	2.16	0.45
1:A:234:ASP:OD2	1:A:236:SER:HB2	2.17	0.44
1:A:536:SER:HB3	1:A:537:HIS:CD2	2.52	0.44
1:B:239:ALA:HA	6:B:1001:HOH:O	2.18	0.44
1:B:151:ILE:HG23	1:B:206:ILE:CD1	2.47	0.44
1:A:71:ALA:HB2	1:A:321:LEU:HD21	1.99	0.44
1:A:260:GLN:HE21	1:A:260:GLN:HB2	1.64	0.44
1:B:287:VAL:O	1:B:291:HIS:HD2	2.01	0.44
1:A:41:LEU:HD11	1:A:318:LEU:HD12	1.99	0.43
1:A:129:LYS:O	1:A:133:GLN:HG3	2.19	0.43
1:A:172:PRO:HG3	1:A:343:TYR:CE1	2.53	0.43
1:B:80:ARG:HG3	1:B:306:PHE:CE2	2.53	0.43
1:B:345:HIS:HA	1:B:382:PRO:HG3	2.00	0.43
1:A:387:GLN:HA	1:A:391:TYR:CG	2.54	0.42
1:A:446:LYS:HD2	1:A:449:GLN:HE22	1.85	0.42
1:A:362:TYR:CE2	1:B:396:GLN:HG2	2.55	0.42
1:A:550:GLN:HE21	1:A:550:GLN:HB3	1.71	0.42
1:B:407:ILE:HD13	1:B:425:LEU:HD23	2.01	0.42
1:B:405:PHE:HB3	1:B:428:PHE:CE1	2.55	0.42
1:B:555:LYS:HA	1:B:555:LYS:HD2	1.94	0.41
1:A:206:ILE:HD11	1:A:285:LEU:HD12	2.03	0.41
1:A:466:VAL:HG11	4:A:964:BME:H12	2.03	0.41
1:A:72:LYS:HE2	1:A:311:LEU:HD12	2.03	0.41
1:B:186:ILE:HB	1:B:216:GLU:CG	2.50	0.40

There are no symmetry-related clashes.

5.3 Torsion angles [i](#)

5.3.1 Protein backbone [i](#)

In the following table, the Percentiles column shows the percent Ramachandran outliers of the chain as a percentile score with respect to all X-ray entries followed by that with respect to entries of similar resolution.

The Analysed column shows the number of residues for which the backbone conformation was analysed, and the total number of residues.

Mol	Chain	Analysed	Favoured	Allowed	Outliers	Percentiles	
1	A	558/564 (99%)	545 (98%)	13 (2%)	0	100	100
1	B	560/564 (99%)	544 (97%)	16 (3%)	0	100	100
All	All	1118/1128 (99%)	1089 (97%)	29 (3%)	0	100	100

There are no Ramachandran outliers to report.

5.3.2 Protein sidechains [i](#)

In the following table, the Percentiles column shows the percent sidechain outliers of the chain as a percentile score with respect to all X-ray entries followed by that with respect to entries of similar resolution.

The Analysed column shows the number of residues for which the sidechain conformation was analysed, and the total number of residues.

Mol	Chain	Analysed	Rotameric	Outliers	Percentiles	
1	A	478/482 (99%)	454 (95%)	24 (5%)	24	8
1	B	480/482 (100%)	464 (97%)	16 (3%)	38	19
All	All	958/964 (99%)	918 (96%)	40 (4%)	31	12

All (40) residues with a non-rotameric sidechain are listed below:

Mol	Chain	Res	Type
1	A	26	ARG
1	A	62	GLU
1	A	103	ARG
1	A	127	LYS
1	A	212	PHE
1	A	236	SER
1	A	253	LYS
1	A	260	GLN

Continued on next page...

Continued from previous page...

Mol	Chain	Res	Type
1	A	337	LEU
1	A	442	GLU
1	A	446	LYS
1	A	454	SER
1	A	456	GLU
1	A	461	LEU
1	A	478	PHE
1	A	519	GLN
1	A	523	LYS
1	A	527	GLU
1	A	531	SER
1	A	536	SER
1	A	550	GLN
1	A	554	THR
1	A	555	LYS
1	A	556	LEU
1	B	103	ARG
1	B	115	LYS
1	B	175	LYS
1	B	197	SER
1	B	198	LEU
1	B	212	PHE
1	B	240	LYS
1	B	254	GLU
1	B	416	ARG
1	B	445	ARG
1	B	465[A]	LYS
1	B	465[B]	LYS
1	B	522[A]	LYS
1	B	522[B]	LYS
1	B	553	ASP
1	B	556	LEU

Sometimes sidechains can be flipped to improve hydrogen bonding and reduce clashes. All (19) such sidechains are listed below:

Mol	Chain	Res	Type
1	A	8	GLN
1	A	16	HIS
1	A	37	ASN
1	A	38	ASN
1	A	65	GLN
1	A	82	ASN

Continued on next page...

Continued from previous page...

Mol	Chain	Res	Type
1	A	104	ASN
1	A	260	GLN
1	A	387	GLN
1	A	449	GLN
1	A	550	GLN
1	A	551	GLN
1	B	16	HIS
1	B	22	ASN
1	B	65	GLN
1	B	82	ASN
1	B	291	HIS
1	B	387	GLN
1	B	551	GLN

5.3.3 RNA [i](#)

There are no RNA molecules in this entry.

5.4 Non-standard residues in protein, DNA, RNA chains [i](#)

There are no non-standard protein/DNA/RNA residues in this entry.

5.5 Carbohydrates [i](#)

There are no monosaccharides in this entry.

5.6 Ligand geometry [i](#)

22 ligands are modelled in this entry.

In the following table, the Counts columns list the number of bonds (or angles) for which Mogul statistics could be retrieved, the number of bonds (or angles) that are observed in the model and the number of bonds (or angles) that are defined in the Chemical Component Dictionary. The Link column lists molecule types, if any, to which the group is linked. The Z score for a bond length (or angle) is the number of standard deviations the observed value is removed from the expected value. A bond length (or angle) with $|Z| > 2$ is considered an outlier worth inspection. RMSZ is the root-mean-square of all Z scores of the bond lengths (or angles).

Mol	Type	Chain	Res	Link	Bond lengths			Bond angles		
					Counts	RMSZ	$\# Z > 2$	Counts	RMSZ	$\# Z > 2$
4	BME	A	964	-	3,3,3	0.22	0	1,2,2	0.81	0

Mol	Type	Chain	Res	Link	Bond lengths			Bond angles		
					Counts	RMSZ	# Z > 2	Counts	RMSZ	# Z > 2
5	GOL	A	974	-	5,5,5	0.39	0	5,5,5	0.32	0
4	BME	A	962	-	3,3,3	0.24	0	1,2,2	0.42	0
2	SO4	A	954	-	4,4,4	0.16	0	6,6,6	0.07	0
3	E4P	A	901[A]	-	9,11,11	2.21	2 (22%)	12,15,15	1.01	1 (8%)
5	GOL	B	972	-	5,5,5	0.37	0	5,5,5	0.41	0
4	BME	B	961	-	3,3,3	0.27	0	1,2,2	0.17	0
2	SO4	B	953	-	4,4,4	0.16	0	6,6,6	0.11	0
2	SO4	A	956	-	4,4,4	0.16	0	6,6,6	0.05	0
5	GOL	A	975	-	5,5,5	0.36	0	5,5,5	0.45	0
4	BME	A	963	-	3,3,3	0.26	0	1,2,2	0.41	0
2	SO4	B	952	-	4,4,4	0.15	0	6,6,6	0.13	0
3	E4P	A	901[B]	-	9,11,11	2.27	2 (22%)	12,15,15	1.01	1 (8%)
5	GOL	A	971	-	5,5,5	0.36	0	5,5,5	0.56	0
3	E4P	B	902[A]	-	9,11,11	2.12	2 (22%)	12,15,15	0.91	1 (8%)
2	SO4	B	957	-	4,4,4	0.13	0	6,6,6	0.07	0
5	GOL	A	973	-	5,5,5	0.31	0	5,5,5	0.23	0
2	SO4	A	951	-	4,4,4	0.14	0	6,6,6	0.14	0
3	E4P	B	902[B]	-	9,11,11	2.17	2 (22%)	12,15,15	0.91	1 (8%)
5	GOL	A	976	-	5,5,5	0.35	0	5,5,5	0.42	0
4	BME	B	966	-	3,3,3	0.20	0	1,2,2	0.29	0
2	SO4	B	955	-	4,4,4	0.15	0	6,6,6	0.08	0

In the following table, the Chirals column lists the number of chiral outliers, the number of chiral centers analysed, the number of these observed in the model and the number defined in the Chemical Component Dictionary. Similar counts are reported in the Torsion and Rings columns. '-' means no outliers of that kind were identified.

Mol	Type	Chain	Res	Link	Chirals	Torsions	Rings
5	GOL	A	971	-	-	4/4/4/4	-
4	BME	B	961	-	-	1/1/1/1	-
4	BME	B	966	-	-	1/1/1/1	-
3	E4P	B	902[B]	-	-	0/10/12/12	-
3	E4P	B	902[A]	-	-	0/10/12/12	-
4	BME	A	964	-	-	1/1/1/1	-
5	GOL	A	973	-	-	0/4/4/4	-
5	GOL	A	975	-	-	0/4/4/4	-
5	GOL	A	974	-	-	0/4/4/4	-
5	GOL	A	976	-	-	2/4/4/4	-
4	BME	A	963	-	-	1/1/1/1	-
4	BME	A	962	-	-	1/1/1/1	-
3	E4P	A	901[B]	-	-	0/10/12/12	-

Continued on next page...

Continued from previous page...

Mol	Type	Chain	Res	Link	Chirals	Torsions	Rings
3	E4P	A	901[A]	-	-	0/10/12/12	-
5	GOL	B	972	-	-	0/4/4/4	-

All (8) bond length outliers are listed below:

Mol	Chain	Res	Type	Atoms	Z	Observed(Å)	Ideal(Å)
3	A	901[B]	E4P	O1-C1	5.92	1.43	1.19
3	A	901[A]	E4P	O1-C1	5.71	1.42	1.19
3	B	902[B]	E4P	O1-C1	5.69	1.42	1.19
3	B	902[A]	E4P	O1-C1	5.51	1.41	1.19
3	A	901[A]	E4P	P-O4	-2.44	1.52	1.60
3	A	901[B]	E4P	P-O4	-2.44	1.52	1.60
3	B	902[A]	E4P	P-O4	-2.37	1.52	1.60
3	B	902[B]	E4P	P-O4	-2.37	1.52	1.60

All (4) bond angle outliers are listed below:

Mol	Chain	Res	Type	Atoms	Z	Observed(°)	Ideal(°)
3	B	902[A]	E4P	O2-C2-C1	-2.48	104.23	110.08
3	B	902[B]	E4P	O2-C2-C1	-2.48	104.23	110.08
3	A	901[A]	E4P	O2-C2-C1	-2.36	104.51	110.08
3	A	901[B]	E4P	O2-C2-C1	-2.36	104.51	110.08

There are no chirality outliers.

All (11) torsion outliers are listed below:

Mol	Chain	Res	Type	Atoms
4	A	962	BME	O1-C1-C2-S2
4	A	963	BME	O1-C1-C2-S2
4	B	961	BME	O1-C1-C2-S2
4	B	966	BME	O1-C1-C2-S2
5	A	971	GOL	C1-C2-C3-O3
5	A	976	GOL	C1-C2-C3-O3
5	A	976	GOL	O2-C2-C3-O3
5	A	971	GOL	O2-C2-C3-O3
5	A	971	GOL	O1-C1-C2-O2
4	A	964	BME	O1-C1-C2-S2
5	A	971	GOL	O1-C1-C2-C3

There are no ring outliers.

4 monomers are involved in 5 short contacts:

Mol	Chain	Res	Type	Clashes	Symm-Clashes
4	A	964	BME	2	0
5	A	975	GOL	1	0
5	A	973	GOL	1	0
4	B	966	BME	1	0

5.7 Other polymers [i](#)

There are no such residues in this entry.

5.8 Polymer linkage issues [i](#)

There are no chain breaks in this entry.

6 Fit of model and data

6.1 Protein, DNA and RNA chains

In the following table, the column labelled ‘#RSRZ > 2’ contains the number (and percentage) of RSRZ outliers, followed by percent RSRZ outliers for the chain as percentile scores relative to all X-ray entries and entries of similar resolution. The OWAB column contains the minimum, median, 95th percentile and maximum values of the occupancy-weighted average B-factor per residue. The column labelled ‘Q < 0.9’ lists the number of (and percentage) of residues with an average occupancy less than 0.9.

Mol	Chain	Analysed	<RSRZ>	#RSRZ>2	OWAB(Å ²)	Q<0.9
1	A	556/564 (98%)	0.39	31 (5%) 24 27	12, 17, 28, 37	1 (0%)
1	B	556/564 (98%)	0.40	36 (6%) 18 21	11, 17, 28, 38	0
All	All	1112/1128 (98%)	0.40	67 (6%) 21 24	11, 17, 28, 38	1 (0%)

All (67) RSRZ outliers are listed below:

Mol	Chain	Res	Type	RSRZ
1	B	556	LEU	6.6
1	A	451	ALA	6.3
1	A	452	GLY	6.2
1	B	555	LYS	5.8
1	A	555	LYS	5.7
1	B	553	ASP	5.2
1	A	531	SER	5.1
1	B	235	PRO	4.7
1	B	456	GLU	4.7
1	A	456	GLU	4.2
1	B	531	SER	4.1
1	A	454	SER	4.0
1	A	553	ASP	3.9
1	A	556	LEU	3.7
1	A	260	GLN	3.7
1	B	238	VAL	3.6
1	B	554	THR	3.6
1	A	455	PRO	3.5
1	A	17	ARG	3.4
1	B	258	ASP	3.4
1	A	535	THR	3.4
1	B	176	GLY	3.3
1	B	254	GLU	3.1
1	B	237	ALA	3.1

Continued on next page...

Continued from previous page...

Mol	Chain	Res	Type	RSRZ
1	B	250	ALA	3.0
1	A	176	GLY	3.0
1	A	529	GLU	3.0
1	A	457	ASP	3.0
1	B	253	LYS	3.0
1	B	455	PRO	2.9
1	A	532	SER	2.9
1	B	290	ASP	2.9
1	B	532	SER	2.8
1	A	442	GLU	2.8
1	A	450	ALA	2.8
1	B	21	ALA	2.8
1	A	554	THR	2.7
1	B	233	LYS	2.7
1	B	113	ASP	2.6
1	A	536	SER	2.6
1	B	206	ILE	2.5
1	A	102	LEU	2.5
1	A	5	ARG	2.5
1	B	454	SER	2.5
1	B	369	ARG	2.5
1	B	248	ASN	2.4
1	B	30	GLU	2.4
1	A	14	GLU	2.4
1	B	417	LYS	2.4
1	A	61	LYS	2.3
1	A	362	TYR	2.3
1	A	417	LYS	2.3
1	A	254	GLU	2.3
1	B	22	ASN	2.3
1	B	239	ALA	2.3
1	A	46	ASN	2.3
1	B	234	ASP	2.3
1	B	17	ARG	2.2
1	B	457	ASP	2.2
1	B	5	ARG	2.2
1	B	257	ILE	2.1
1	A	115	LYS	2.1
1	B	175	LYS	2.1
1	A	253	LYS	2.1
1	B	236	SER	2.0
1	A	123	ARG	2.0

Continued on next page...

Continued from previous page...

Mol	Chain	Res	Type	RSRZ
1	B	461	LEU	2.0

6.2 Non-standard residues in protein, DNA, RNA chains [i](#)

There are no non-standard protein/DNA/RNA residues in this entry.

6.3 Carbohydrates [i](#)

There are no monosaccharides in this entry.

6.4 Ligands [i](#)

In the following table, the Atoms column lists the number of modelled atoms in the group and the number defined in the chemical component dictionary. The B-factors column lists the minimum, median, 95th percentile and maximum values of B factors of atoms in the group. The column labelled 'Q< 0.9' lists the number of atoms with occupancy less than 0.9.

Mol	Type	Chain	Res	Atoms	RSCC	RSR	B-factors(Å ²)	Q<0.9
4	BME	A	962	4/4	0.65	0.28	47,47,47,49	0
4	BME	A	964	4/4	0.74	0.30	40,40,40,42	0
5	GOL	A	971	6/6	0.78	0.24	25,26,28,29	0
5	GOL	A	974	6/6	0.78	0.17	29,33,34,35	0
5	GOL	A	975	6/6	0.78	0.20	38,39,39,42	0
5	GOL	A	976	6/6	0.80	0.15	35,36,36,38	0
5	GOL	A	973	6/6	0.81	0.30	26,29,30,31	0
4	BME	B	966	4/4	0.82	0.36	45,46,46,48	0
4	BME	B	961	4/4	0.82	0.17	32,33,34,37	0
5	GOL	B	972	6/6	0.87	0.16	21,24,26,29	0
2	SO4	A	951	5/5	0.89	0.12	27,27,27,27	5
2	SO4	B	952	5/5	0.90	0.21	26,26,27,27	5
2	SO4	B	955	5/5	0.91	0.22	32,32,32,33	5
2	SO4	B	957	5/5	0.91	0.40	27,27,27,27	5
2	SO4	A	954	5/5	0.91	0.22	33,33,33,34	5
2	SO4	B	953	5/5	0.92	0.23	31,31,31,31	5
2	SO4	A	956	5/5	0.93	0.19	32,32,32,33	5
3	E4P	B	902[B]	12/12	0.94	0.11	12,14,16,16	1
3	E4P	B	902[A]	12/12	0.94	0.11	7,14,16,16	1
4	BME	A	963	4/4	0.94	0.23	35,36,36,39	0
3	E4P	A	901[B]	12/12	0.95	0.10	10,12,16,16	1
3	E4P	A	901[A]	12/12	0.95	0.10	3,12,16,16	1

6.5 Other polymers [i](#)

There are no such residues in this entry.