



Full wwPDB X-ray Structure Validation Report ⓘ

Feb 5, 2024 – 07:19 AM EST

PDB ID : 1TLM
Title : STRUCTURAL ASPECTS OF INOTROPIC BIPYRIDINE BINDING:
CRYSTAL STRUCTURE DETERMINATION TO 1.9 ANGSTROMS OF
THE HUMAN SERUM TRANSTHYRETIN-MILRINONE COMPLEX
Authors : Wojtczak, A.; Luft, J.; Cody, V.
Deposited on : 1992-12-22
Resolution : 1.90 Å(reported)

This is a Full wwPDB X-ray Structure Validation Report for a publicly released PDB entry.

We welcome your comments at validation@mail.wwpdb.org

A user guide is available at

<https://www.wwpdb.org/validation/2017/XrayValidationReportHelp>

with specific help available everywhere you see the ⓘ symbol.

The types of validation reports are described at

<http://www.wwpdb.org/validation/2017/FAQs#types>.

The following versions of software and data (see [references ⓘ](#)) were used in the production of this report:

MolProbity : 4.02b-467
Mogul : 1.8.5 (274361), CSD as541be (2020)
Xtrriage (Phenix) : **NOT EXECUTED**
EDS : **NOT EXECUTED**
Percentile statistics : 20191225.v01 (using entries in the PDB archive December 25th 2019)
Ideal geometry (proteins) : Engh & Huber (2001)
Ideal geometry (DNA, RNA) : Parkinson et al. (1996)
Validation Pipeline (wwPDB-VP) : 2.36

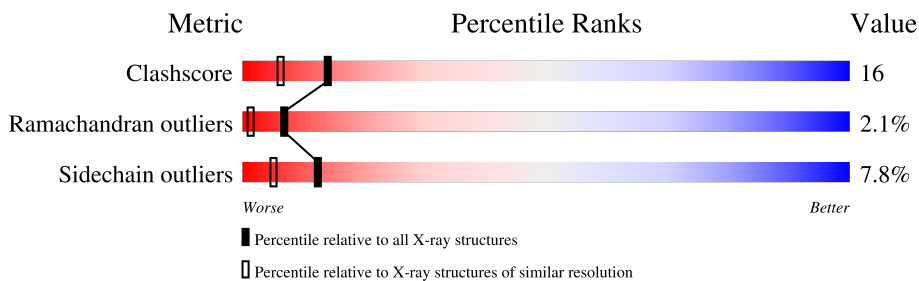
1 Overall quality at a glance

The following experimental techniques were used to determine the structure:

X-RAY DIFFRACTION

The reported resolution of this entry is 1.90 Å.

Percentile scores (ranging between 0-100) for global validation metrics of the entry are shown in the following graphic. The table shows the number of entries on which the scores are based.



Metric	Whole archive (#Entries)	Similar resolution (#Entries, resolution range(Å))
Clashscore	141614	6847 (1.90-1.90)
Ramachandran outliers	138981	6760 (1.90-1.90)
Sidechain outliers	138945	6760 (1.90-1.90)

The table below summarises the geometric issues observed across the polymeric chains and their fit to the electron density. The red, orange, yellow and green segments of the lower bar indicate the fraction of residues that contain outliers for ≥ 3 , 2, 1 and 0 types of geometric quality criteria respectively. A grey segment represents the fraction of residues that are not modelled. The numeric value for each fraction is indicated below the corresponding segment, with a dot representing fractions $\leq 5\%$.

Note EDS was not executed.

Mol	Chain	Length	Quality of chain
1	A	127	 46% 39% 10% . .
1	B	127	 50% 35% 9% . 6%

2 Entry composition i

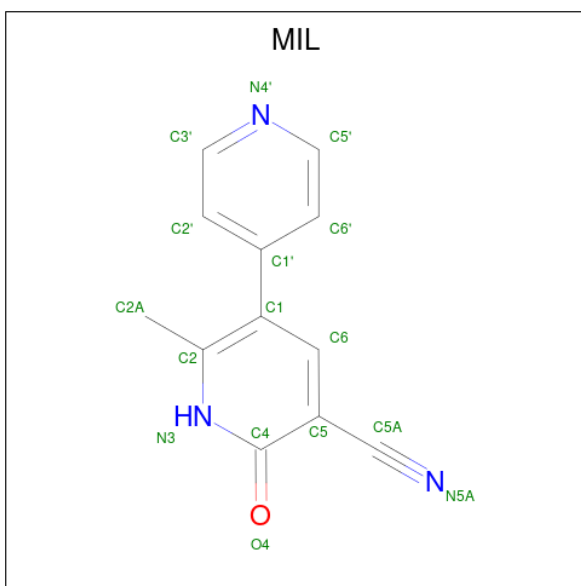
There are 3 unique types of molecules in this entry. The entry contains 2040 atoms, of which 0 are hydrogens and 0 are deuteriums.

In the tables below, the ZeroOcc column contains the number of atoms modelled with zero occupancy, the AltConf column contains the number of residues with at least one atom in alternate conformation and the Trace column contains the number of residues modelled with at most 2 atoms.

- Molecule 1 is a protein called TRANSTHYRETIN.

Mol	Chain	Residues	Atoms					ZeroOcc	AltConf	Trace
			Total	C	N	O	S			
1	A	123	Total	C	N	O	S	0	0	0
			949	604	157	186	2			
1	B	120	Total	C	N	O	S	0	0	0
			929	593	154	180	2			

- Molecule 2 is MILRINONE (three-letter code: MIL) (formula: C₁₂H₉N₃O).



Mol	Chain	Residues	Atoms				ZeroOcc	AltConf
			Total	C	N	O		
2	A	1	Total	C	N	O	0	0
			16	12	3	1		
2	B	1	Total	C	N	O	0	0
			16	12	3	1		

- Molecule 3 is water.

Mol	Chain	Residues	Atoms		ZeroOcc	AltConf
3	A	73	Total 73	O 73	0	0
3	B	57	Total 57	O 57	0	0

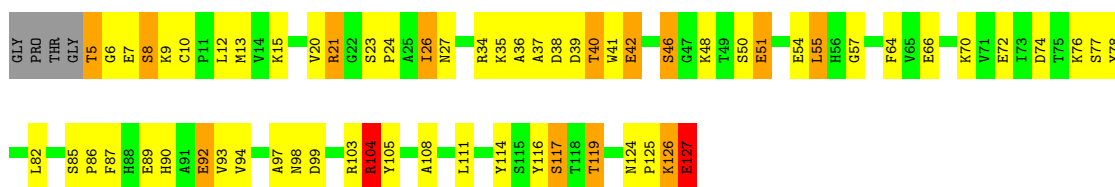
3 Residue-property plots [i](#)

These plots are drawn for all protein, RNA, DNA and oligosaccharide chains in the entry. The first graphic for a chain summarises the proportions of the various outlier classes displayed in the second graphic. The second graphic shows the sequence view annotated by issues in geometry. Residues are color-coded according to the number of geometric quality criteria for which they contain at least one outlier: green = 0, yellow = 1, orange = 2 and red = 3 or more. Stretches of 2 or more consecutive residues without any outlier are shown as a green connector. Residues present in the sample, but not in the model, are shown in grey.

Note EDS was not executed.

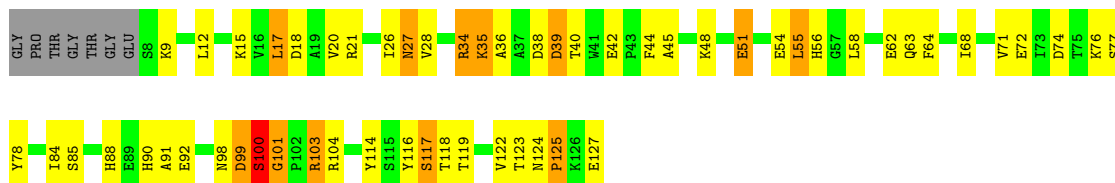
- Molecule 1: TRANSTHYRETIN

Chain A: 



- Molecule 1: TRANSTHYRETIN

Chain B: 



4 Data and refinement statistics

Xtrriage (Phenix) and EDS were not executed - this section is therefore incomplete.

Property	Value	Source
Space group	P 21 21 2	Depositor
Cell constants a, b, c, α , β , γ	44.18Å 86.38Å 66.21Å 90.00° 90.00° 90.00°	Depositor
Resolution (Å)	8.00 – 1.90	Depositor
% Data completeness (in resolution range)	(Not available) (8.00-1.90)	Depositor
R_{merge}	(Not available)	Depositor
R_{sym}	(Not available)	Depositor
Refinement program	PROLSQ	Depositor
R, R_{free}	0.173 , (Not available)	Depositor
Estimated twinning fraction	No twinning to report.	Xtrriage
Total number of atoms	2040	wwPDB-VP
Average B, all atoms (Å ²)	21.0	wwPDB-VP

5 Model quality i

5.1 Standard geometry i

Bond lengths and bond angles in the following residue types are not validated in this section: MIL

The Z score for a bond length (or angle) is the number of standard deviations the observed value is removed from the expected value. A bond length (or angle) with $|Z| > 5$ is considered an outlier worth inspection. RMSZ is the root-mean-square of all Z scores of the bond lengths (or angles).

Mol	Chain	Bond lengths		Bond angles	
		RMSZ	# Z >5	RMSZ	# Z >5
1	A	1.36	4/973 (0.4%)	2.39	56/1325 (4.2%)
1	B	1.19	0/953	2.37	52/1298 (4.0%)
All	All	1.28	4/1926 (0.2%)	2.38	108/2623 (4.1%)

Chiral center outliers are detected by calculating the chiral volume of a chiral center and verifying if the center is modelled as a planar moiety or with the opposite hand. A planarity outlier is detected by checking planarity of atoms in a peptide group, atoms in a mainchain group or atoms of a sidechain that are expected to be planar.

Mol	Chain	#Chirality outliers	#Planarity outliers
1	A	0	1
1	B	0	1
All	All	0	2

All (4) bond length outliers are listed below:

Mol	Chain	Res	Type	Atoms	Z	Observed(Å)	Ideal(Å)
1	A	46	SER	CB-OG	-8.66	1.30	1.42
1	A	46	SER	CA-CB	6.69	1.62	1.52
1	A	50	SER	CB-OG	6.29	1.50	1.42
1	A	54	GLU	CD-OE1	-5.20	1.20	1.25

All (108) bond angle outliers are listed below:

Mol	Chain	Res	Type	Atoms	Z	Observed(°)	Ideal(°)
1	B	62	GLU	CB-CG-CD	17.97	162.72	114.20
1	A	74	ASP	CB-CG-OD1	16.18	132.86	118.30
1	A	116	TYR	CB-CG-CD2	-13.48	112.91	121.00
1	B	38	ASP	CB-CG-OD1	12.24	129.32	118.30
1	A	21	ARG	NE-CZ-NH1	11.98	126.29	120.30

Continued on next page...

Continued from previous page...

Mol	Chain	Res	Type	Atoms	Z	Observed(°)	Ideal(°)
1	A	72	GLU	OE1-CD-OE2	11.14	136.66	123.30
1	B	99	ASP	CB-CG-OD1	10.61	127.85	118.30
1	A	34	ARG	NE-CZ-NH2	10.42	125.51	120.30
1	B	104	ARG	NE-CZ-NH2	-10.24	115.18	120.30
1	A	99	ASP	N-CA-CB	-10.15	92.33	110.60
1	B	78	TYR	CB-CG-CD2	9.59	126.75	121.00
1	B	63	GLN	CB-CG-CD	9.52	136.35	111.60
1	B	116	TYR	CB-CG-CD1	9.40	126.64	121.00
1	A	85	SER	N-CA-CB	-9.39	96.41	110.50
1	A	27	ASN	CB-CG-OD1	8.98	139.56	121.60
1	B	114	TYR	CB-CG-CD1	-8.88	115.67	121.00
1	A	21	ARG	CD-NE-CZ	8.87	136.01	123.60
1	A	117	SER	N-CA-CB	8.86	123.79	110.50
1	B	119	THR	OG1-CB-CG2	-8.84	89.66	110.00
1	A	78	TYR	CB-CG-CD1	-8.80	115.72	121.00
1	A	46	SER	CB-CA-C	-8.78	93.42	110.10
1	A	119	THR	CA-CB-CG2	8.74	124.64	112.40
1	A	98	ASN	C-N-CA	8.63	143.26	121.70
1	B	116	TYR	CB-CG-CD2	-8.16	116.10	121.00
1	B	78	TYR	CG-CD1-CE1	8.14	127.81	121.30
1	B	38	ASP	CB-CG-OD2	-7.59	111.47	118.30
1	B	78	TYR	CB-CG-CD1	-7.45	116.53	121.00
1	A	111	LEU	O-C-N	7.27	134.33	122.70
1	A	20	VAL	CA-CB-CG1	7.26	121.79	110.90
1	B	36	ALA	CB-CA-C	7.26	120.99	110.10
1	B	114	TYR	CB-CG-CD2	7.20	125.32	121.00
1	A	51	GLU	CB-CG-CD	7.19	133.61	114.20
1	A	99	ASP	CB-CG-OD2	-7.11	111.90	118.30
1	A	87	PHE	CB-CG-CD1	-7.08	115.84	120.80
1	A	54	GLU	CG-CD-OE2	-7.03	104.24	118.30
1	A	103	ARG	CD-NE-CZ	-6.97	113.84	123.60
1	A	103	ARG	NE-CZ-NH1	6.91	123.76	120.30
1	B	42	GLU	CA-CB-CG	6.89	128.56	113.40
1	B	34	ARG	NE-CZ-NH2	-6.84	116.88	120.30
1	A	40	THR	CA-CB-CG2	6.81	121.93	112.40
1	A	127	GLU	CB-CG-CD	6.76	132.45	114.20
1	A	92	GLU	CG-CD-OE2	-6.75	104.80	118.30
1	B	21	ARG	NE-CZ-NH1	-6.74	116.93	120.30
1	B	119	THR	CA-CB-CG2	6.67	121.73	112.40
1	B	103	ARG	CD-NE-CZ	6.63	132.88	123.60
1	B	78	TYR	CD1-CE1-CZ	-6.60	113.86	119.80
1	B	63	GLN	CG-CD-OE1	6.57	134.73	121.60

Continued on next page...

Continued from previous page...

Mol	Chain	Res	Type	Atoms	Z	Observed(°)	Ideal(°)
1	B	74	ASP	CB-CG-OD1	6.55	124.19	118.30
1	B	72	GLU	OE1-CD-OE2	6.47	131.07	123.30
1	B	77	SER	CB-CA-C	-6.41	97.93	110.10
1	A	92	GLU	OE1-CD-OE2	6.38	130.96	123.30
1	A	105	TYR	CZ-CE2-CD2	-6.35	114.08	119.80
1	B	28	VAL	CG1-CB-CG2	-6.35	100.75	110.90
1	A	114	TYR	CB-CG-CD2	-6.30	117.22	121.00
1	A	74	ASP	OD1-CG-OD2	-6.27	111.39	123.30
1	A	103	ARG	CA-CB-CG	6.22	127.07	113.40
1	A	54	GLU	CG-CD-OE1	6.21	130.71	118.30
1	A	37	ALA	CB-CA-C	6.15	119.32	110.10
1	A	99	ASP	OD1-CG-OD2	6.12	134.93	123.30
1	A	15	LYS	CD-CE-NZ	-6.07	97.75	111.70
1	A	78	TYR	CB-CG-CD2	6.06	124.64	121.00
1	A	119	THR	OG1-CB-CG2	-6.05	96.08	110.00
1	A	76	LYS	CD-CE-NZ	-6.03	97.84	111.70
1	B	103	ARG	NE-CZ-NH2	6.03	123.31	120.30
1	A	41	TRP	O-C-N	-6.01	113.09	122.70
1	B	117	SER	N-CA-CB	5.98	119.46	110.50
1	A	34	ARG	NH1-CZ-NH2	-5.92	112.89	119.40
1	A	13	MET	CA-CB-CG	-5.91	103.25	113.30
1	B	116	TYR	CG-CD1-CE1	5.90	126.02	121.30
1	A	97	ALA	C-N-CA	5.90	136.45	121.70
1	A	99	ASP	CB-CG-OD1	-5.85	113.04	118.30
1	A	46	SER	N-CA-CB	-5.84	101.73	110.50
1	B	39	ASP	N-CA-CB	-5.83	100.10	110.60
1	A	57	GLY	CA-C-O	-5.81	110.15	120.60
1	A	26	ILE	CG1-CB-CG2	-5.81	98.63	111.40
1	A	116	TYR	CB-CG-CD1	5.80	124.48	121.00
1	A	104	ARG	CD-NE-CZ	5.77	131.68	123.60
1	B	18	ASP	CB-CG-OD2	5.72	123.45	118.30
1	B	27	ASN	CA-CB-CG	-5.68	100.90	113.40
1	B	51	GLU	CB-CG-CD	5.61	129.34	114.20
1	B	116	TYR	CD1-CE1-CZ	-5.61	114.75	119.80
1	B	39	ASP	CB-CA-C	5.58	121.57	110.40
1	B	17	LEU	CB-CG-CD2	-5.58	101.52	111.00
1	B	84	ILE	O-C-N	-5.57	113.78	122.70
1	A	86	PRO	CA-C-N	5.52	129.34	117.20
1	B	104	ARG	N-CA-CB	5.50	120.50	110.60
1	A	7	GLU	O-C-N	5.49	131.48	122.70
1	A	66	GLU	CA-CB-CG	5.49	125.47	113.40
1	B	91	ALA	CB-CA-C	5.48	118.32	110.10

Continued on next page...

Continued from previous page...

Mol	Chain	Res	Type	Atoms	Z	Observed(°)	Ideal(°)
1	A	20	VAL	CG1-CB-CG2	-5.47	102.15	110.90
1	B	71	VAL	CA-CB-CG2	5.47	119.10	110.90
1	B	44	PHE	CB-CA-C	5.37	121.14	110.40
1	B	103	ARG	CA-CB-CG	5.34	125.16	113.40
1	A	111	LEU	CB-CG-CD1	-5.33	101.94	111.00
1	B	85	SER	N-CA-CB	5.31	118.46	110.50
1	A	55	LEU	CB-CG-CD2	5.29	119.99	111.00
1	A	77	SER	O-C-N	-5.27	114.26	122.70
1	B	63	GLN	OE1-CD-NE2	-5.27	109.78	121.90
1	B	127	GLU	CG-CD-OE2	-5.24	107.83	118.30
1	B	48	LYS	O-C-N	5.22	131.06	122.70
1	B	35	LYS	CD-CE-NZ	-5.13	99.89	111.70
1	B	45	ALA	N-CA-CB	-5.13	102.92	110.10
1	B	15	LYS	CB-CG-CD	5.10	124.87	111.60
1	B	34	ARG	NE-CZ-NH1	5.08	122.84	120.30
1	B	127	GLU	CG-CD-OE1	5.08	128.46	118.30
1	A	94	VAL	CG1-CB-CG2	5.07	119.01	110.90
1	B	20	VAL	CG1-CB-CG2	-5.05	102.83	110.90
1	A	12	LEU	CA-CB-CG	5.03	126.86	115.30

There are no chirality outliers.

All (2) planarity outliers are listed below:

Mol	Chain	Res	Type	Group
1	A	104	ARG	Sidechain
1	B	34	ARG	Sidechain

5.2 Too-close contacts [\(i\)](#)

In the following table, the Non-H and H(model) columns list the number of non-hydrogen atoms and hydrogen atoms in the chain respectively. The H(added) column lists the number of hydrogen atoms added and optimized by MolProbity. The Clashes column lists the number of clashes within the asymmetric unit, whereas Symm-Clashes lists symmetry-related clashes.

Mol	Chain	Non-H	H(model)	H(added)	Clashes	Symm-Clashes
1	A	949	0	923	31	0
1	B	929	0	908	29	0
2	A	16	0	9	0	0
2	B	16	0	9	3	0
3	A	73	0	0	10	0
3	B	57	0	0	10	0

Continued on next page...

Continued from previous page...

Mol	Chain	Non-H	H(model)	H(added)	Clashes	Symm-Clashes
All	All	2040	0	1849	59	0

The all-atom clashscore is defined as the number of clashes found per 1000 atoms (including hydrogen atoms). The all-atom clashscore for this structure is 16.

All (59) close contacts within the same asymmetric unit are listed below, sorted by their clash magnitude.

Atom-1	Atom-2	Interatomic distance (Å)	Clash overlap (Å)
1:A:64:PHE:CZ	3:A:196:HOH:O	2.04	1.08
1:B:35:LYS:O	3:B:140:HOH:O	1.97	0.83
1:A:64:PHE:HZ	3:A:196:HOH:O	1.46	0.81
1:A:9:LYS:NZ	1:A:126:LYS:HB2	2.01	0.76
1:A:125:PRO:O	1:A:126:LYS:C	2.26	0.73
1:A:89:GLU:OE2	3:A:157:HOH:O	2.05	0.72
1:A:35:LYS:HE3	1:A:39:ASP:OD1	1.91	0.71
1:A:127:GLU:HG2	1:A:127:GLU:O	1.89	0.71
1:A:48:LYS:HE2	3:A:177:HOH:O	1.90	0.71
1:B:27:ASN:ND2	3:B:143:HOH:O	2.27	0.68
1:A:21:ARG:NH2	3:A:135:HOH:O	2.25	0.68
1:B:64:PHE:CZ	3:B:153:HOH:O	2.47	0.67
1:A:5:THR:OG1	1:A:6:GLY:N	2.28	0.65
1:A:36:ALA:HB2	1:A:42:GLU:HG3	1.78	0.65
1:A:9:LYS:HZ1	1:A:126:LYS:HB2	1.62	0.64
1:B:98:ASN:C	1:B:103:ARG:HH11	2.00	0.64
1:B:26:ILE:O	1:B:27:ASN:HB2	1.97	0.63
1:A:26:ILE:HG22	3:A:133:HOH:O	2.02	0.60
1:A:93:VAL:CG1	3:B:148:HOH:O	2.50	0.60
1:B:99:ASP:O	1:B:100:SER:C	2.40	0.59
1:B:12:LEU:HD13	3:B:153:HOH:O	2.02	0.59
1:B:12:LEU:HB2	3:B:153:HOH:O	2.01	0.59
1:B:118:THR:HA	2:B:128:MIL:N5A	2.21	0.55
1:A:117:SER:HB3	1:B:117:SER:HB3	1.90	0.54
1:B:88:HIS:CD2	3:B:148:HOH:O	2.61	0.53
1:B:99:ASP:O	1:B:101:GLY:N	2.41	0.53
1:A:93:VAL:HG13	3:B:148:HOH:O	2.09	0.52
1:B:122:VAL:C	1:B:123:THR:CG2	2.79	0.51
1:A:8:SER:O	1:A:104:ARG:NH1	2.45	0.49
1:A:64:PHE:CE1	3:A:196:HOH:O	2.49	0.49
1:A:23:SER:HB2	1:A:24:PRO:HD2	1.94	0.49
1:A:108:ALA:HB3	1:A:119:THR:HG22	1.95	0.49
1:B:54:GLU:CB	1:B:56:HIS:CE1	2.95	0.49

Continued on next page...

Continued from previous page...

Atom-1	Atom-2	Interatomic distance (Å)	Clash overlap (Å)
1:A:36:ALA:HB2	1:A:42:GLU:CG	2.43	0.48
1:B:54:GLU:HB3	1:B:56:HIS:CE1	2.48	0.48
1:A:9:LYS:HZ2	1:A:126:LYS:HB2	1.77	0.48
1:A:90:HIS:HE1	3:A:201:HOH:O	1.97	0.48
1:B:98:ASN:CB	1:B:100:SER:OG	2.62	0.47
1:B:90:HIS:CD2	1:B:92:GLU:HG3	2.49	0.47
1:A:125:PRO:O	1:A:127:GLU:N	2.47	0.46
1:B:98:ASN:C	1:B:100:SER:H	2.16	0.46
1:A:21:ARG:CZ	3:A:135:HOH:O	2.62	0.46
1:B:98:ASN:HB3	1:B:100:SER:OG	2.15	0.46
1:A:124:ASN:HA	1:A:125:PRO:HD2	1.53	0.45
1:B:55:LEU:HD13	1:B:58:LEU:HD11	1.98	0.45
1:A:26:ILE:HD11	1:A:51:GLU:OE2	2.16	0.45
1:B:124:ASN:HA	1:B:125:PRO:HD3	1.83	0.44
1:B:99:ASP:N	1:B:103:ARG:HH11	2.14	0.43
1:A:26:ILE:HD12	1:A:51:GLU:HA	2.00	0.42
1:A:93:VAL:HG12	3:B:148:HOH:O	2.14	0.42
1:B:17:LEU:HD11	2:B:128:MIL:C3'	2.49	0.42
1:B:58:LEU:HA	1:B:58:LEU:HD23	1.82	0.42
1:B:76:LYS:NZ	3:B:145:HOH:O	2.54	0.41
1:B:98:ASN:C	1:B:103:ARG:NH1	2.72	0.41
1:B:55:LEU:CD1	1:B:58:LEU:HD21	2.51	0.41
1:B:98:ASN:C	1:B:100:SER:N	2.73	0.41
1:A:70:LYS:HD3	1:A:92:GLU:HG3	2.02	0.41
1:B:117:SER:O	2:B:128:MIL:N5A	2.54	0.41
1:A:48:LYS:CE	3:A:177:HOH:O	2.60	0.40

There are no symmetry-related clashes.

5.3 Torsion angles [\(i\)](#)

5.3.1 Protein backbone [\(i\)](#)

In the following table, the Percentiles column shows the percent Ramachandran outliers of the chain as a percentile score with respect to all X-ray entries followed by that with respect to entries of similar resolution.

The Analysed column shows the number of residues for which the backbone conformation was analysed, and the total number of residues.

Mol	Chain	Analysed	Favoured	Allowed	Outliers	Percentiles	
1	A	121/127 (95%)	114 (94%)	5 (4%)	2 (2%)	9	2
1	B	118/127 (93%)	113 (96%)	2 (2%)	3 (2%)	5	1
All	All	239/254 (94%)	227 (95%)	7 (3%)	5 (2%)	7	1

All (5) Ramachandran outliers are listed below:

Mol	Chain	Res	Type
1	A	8	SER
1	B	100	SER
1	B	101	GLY
1	A	126	LYS
1	B	125	PRO

5.3.2 Protein sidechains [i](#)

In the following table, the Percentiles column shows the percent sidechain outliers of the chain as a percentile score with respect to all X-ray entries followed by that with respect to entries of similar resolution.

The Analysed column shows the number of residues for which the sidechain conformation was analysed, and the total number of residues.

Mol	Chain	Analysed	Rotameric	Outliers	Percentiles	
1	A	103/105 (98%)	94 (91%)	9 (9%)	10	4
1	B	101/105 (96%)	94 (93%)	7 (7%)	15	7
All	All	204/210 (97%)	188 (92%)	16 (8%)	12	5

All (16) residues with a non-rotameric sidechain are listed below:

Mol	Chain	Res	Type
1	A	5	THR
1	A	10	CYS
1	A	38	ASP
1	A	40	THR
1	A	42	GLU
1	A	46	SER
1	A	55	LEU
1	A	82	LEU
1	A	127	GLU
1	B	9	LYS
1	B	39	ASP

Continued on next page...

Continued from previous page...

Mol	Chain	Res	Type
1	B	40	THR
1	B	51	GLU
1	B	55	LEU
1	B	68	ILE
1	B	100	SER

Sometimes sidechains can be flipped to improve hydrogen bonding and reduce clashes. All (4) such sidechains are listed below:

Mol	Chain	Res	Type
1	A	90	HIS
1	B	27	ASN
1	B	56	HIS
1	B	124	ASN

5.3.3 RNA [i](#)

There are no RNA molecules in this entry.

5.4 Non-standard residues in protein, DNA, RNA chains [i](#)

There are no non-standard protein/DNA/RNA residues in this entry.

5.5 Carbohydrates [i](#)

There are no monosaccharides in this entry.

5.6 Ligand geometry [i](#)

2 ligands are modelled in this entry.

In the following table, the Counts columns list the number of bonds (or angles) for which Mogul statistics could be retrieved, the number of bonds (or angles) that are observed in the model and the number of bonds (or angles) that are defined in the Chemical Component Dictionary. The Link column lists molecule types, if any, to which the group is linked. The Z score for a bond length (or angle) is the number of standard deviations the observed value is removed from the expected value. A bond length (or angle) with $|Z| > 2$ is considered an outlier worth inspection. RMSZ is the root-mean-square of all Z scores of the bond lengths (or angles).

Mol	Type	Chain	Res	Link	Bond lengths			Bond angles		
					Counts	RMSZ	# Z > 2	Counts	RMSZ	# Z > 2
2	MIL	A	128	-	16,17,17	1.91	3 (18%)	16,23,23	6.19	8 (50%)
2	MIL	B	128	-	16,17,17	1.64	1 (6%)	16,23,23	6.23	7 (43%)

In the following table, the Chirals column lists the number of chiral outliers, the number of chiral centers analysed, the number of these observed in the model and the number defined in the Chemical Component Dictionary. Similar counts are reported in the Torsion and Rings columns. '-' means no outliers of that kind were identified.

Mol	Type	Chain	Res	Link	Chirals	Torsions	Rings
2	MIL	A	128	-	-	0/1/6/6	0/2/2/2
2	MIL	B	128	-	-	0/1/6/6	0/2/2/2

All (4) bond length outliers are listed below:

Mol	Chain	Res	Type	Atoms	Z	Observed(Å)	Ideal(Å)
2	B	128	MIL	C2-C1	-5.24	1.36	1.43
2	A	128	MIL	C2-C1	-4.88	1.37	1.43
2	A	128	MIL	C4-N3	3.83	1.39	1.33
2	A	128	MIL	C2-N3	3.40	1.35	1.32

All (15) bond angle outliers are listed below:

Mol	Chain	Res	Type	Atoms	Z	Observed(°)	Ideal(°)
2	B	128	MIL	C5-C4-N3	-17.06	112.51	124.40
2	A	128	MIL	C5-C4-N3	-14.75	114.12	124.40
2	A	128	MIL	C5-C5A-N5A	-14.45	154.08	177.88
2	B	128	MIL	C2A-C2-C1	10.30	129.66	121.11
2	B	128	MIL	C2-N3-C4	9.60	129.94	117.92
2	A	128	MIL	C2A-C2-C1	9.25	128.79	121.11
2	B	128	MIL	C1-C2-N3	-7.72	116.53	122.05
2	A	128	MIL	C2-N3-C4	6.33	125.84	117.92
2	B	128	MIL	C5-C5A-N5A	-5.54	168.75	177.88
2	A	128	MIL	C6-C5-C4	4.17	120.20	117.58
2	B	128	MIL	C6-C5-C5A	4.13	125.96	119.74
2	A	128	MIL	C6-C5-C5A	3.91	125.63	119.74
2	A	128	MIL	C1-C2-N3	-3.87	119.28	122.05
2	B	128	MIL	C6-C5-C4	3.62	119.85	117.58
2	A	128	MIL	C2A-C2-N3	-2.92	111.92	116.01

There are no chirality outliers.

There are no torsion outliers.

There are no ring outliers.

1 monomer is involved in 3 short contacts:

Mol	Chain	Res	Type	Clashes	Symm-Clashes
2	B	128	MIL	3	0

5.7 Other polymers [i](#)

There are no such residues in this entry.

5.8 Polymer linkage issues [i](#)

There are no chain breaks in this entry.

6 Fit of model and data [i](#)

6.1 Protein, DNA and RNA chains [i](#)

EDS was not executed - this section is therefore empty.

6.2 Non-standard residues in protein, DNA, RNA chains [i](#)

EDS was not executed - this section is therefore empty.

6.3 Carbohydrates [i](#)

EDS was not executed - this section is therefore empty.

6.4 Ligands [i](#)

EDS was not executed - this section is therefore empty.

6.5 Other polymers [i](#)

EDS was not executed - this section is therefore empty.