



Full wwPDB X-ray Structure Validation Report ⓘ

Jul 31, 2023 – 05:32 AM EDT

PDB ID : 1TBZ
Title : HUMAN THROMBIN WITH ACTIVE SITE N-METHYL-D PHENYLALANYL-N-[5-(AMINOIMINOMETHYL)AMINO]-1-{{BENZOTHAZOLYL)CARBONYL] BUTYL]-L-PROLINAMIDE TRIFLUOROACETATE AND EXOSITE-HIRUGEN
Authors : Matthews, J.H.; Krishnan, R.; Costanzo, M.J.; Maryanoff, B.E.; Tulinsky, A.
Deposited on : 1998-02-05
Resolution : 2.30 Å(reported)

This is a Full wwPDB X-ray Structure Validation Report for a publicly released PDB entry.

We welcome your comments at validation@mail.wwpdb.org

A user guide is available at

<https://www.wwpdb.org/validation/2017/XrayValidationReportHelp>

with specific help available everywhere you see the ⓘ symbol.

The types of validation reports are described at

<http://www.wwpdb.org/validation/2017/FAQs#types>.

The following versions of software and data (see [references ⓘ](#)) were used in the production of this report:

MolProbity : 4.02b-467
Mogul : 1.8.5 (274361), CSD as541be (2020)
Xtrriage (Phenix) : **NOT EXECUTED**
EDS : **NOT EXECUTED**
buster-report : 1.1.7 (2018)
Percentile statistics : 20191225.v01 (using entries in the PDB archive December 25th 2019)
Ideal geometry (proteins) : Engh & Huber (2001)
Ideal geometry (DNA, RNA) : Parkinson et al. (1996)
Validation Pipeline (wwPDB-VP) : 2.34

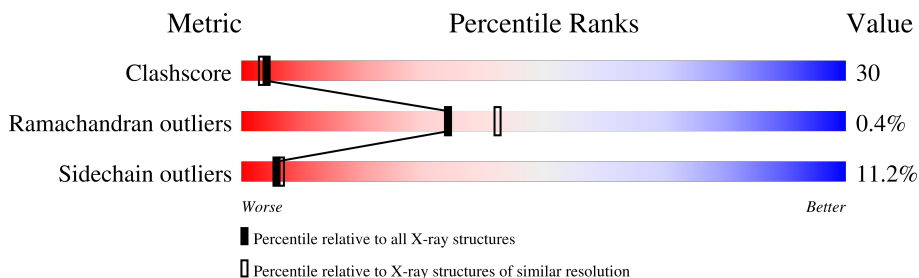
1 Overall quality at a glance

The following experimental techniques were used to determine the structure:

X-RAY DIFFRACTION

The reported resolution of this entry is 2.30 Å.

Percentile scores (ranging between 0-100) for global validation metrics of the entry are shown in the following graphic. The table shows the number of entries on which the scores are based.



Metric	Whole archive (#Entries)	Similar resolution (#Entries, resolution range(Å))
Clashscore	141614	5643 (2.30-2.30)
Ramachandran outliers	138981	5575 (2.30-2.30)
Sidechain outliers	138945	5575 (2.30-2.30)

The table below summarises the geometric issues observed across the polymeric chains and their fit to the electron density. The red, orange, yellow and green segments of the lower bar indicate the fraction of residues that contain outliers for ≥ 3 , 2, 1 and 0 types of geometric quality criteria respectively. A grey segment represents the fraction of residues that are not modelled. The numeric value for each fraction is indicated below the corresponding segment, with a dot representing fractions $\leq 5\%$.

Note EDS was not executed.

Mol	Chain	Length	Quality of chain
1	L	36	
2	H	259	
3	I	12	

2 Entry composition [i](#)

There are 6 unique types of molecules in this entry. The entry contains 2485 atoms, of which 0 are hydrogens and 0 are deuteriums.

In the tables below, the ZeroOcc column contains the number of atoms modelled with zero occupancy, the AltConf column contains the number of residues with at least one atom in alternate conformation and the Trace column contains the number of residues modelled with at most 2 atoms.

- Molecule 1 is a protein called ALPHA-THROMBIN.

Mol	Chain	Residues	Atoms					ZeroOcc	AltConf	Trace
			Total	C	N	O	S			
1	L	25	Total	C	N	O	S	0	0	0
			205	130	33	41	1			

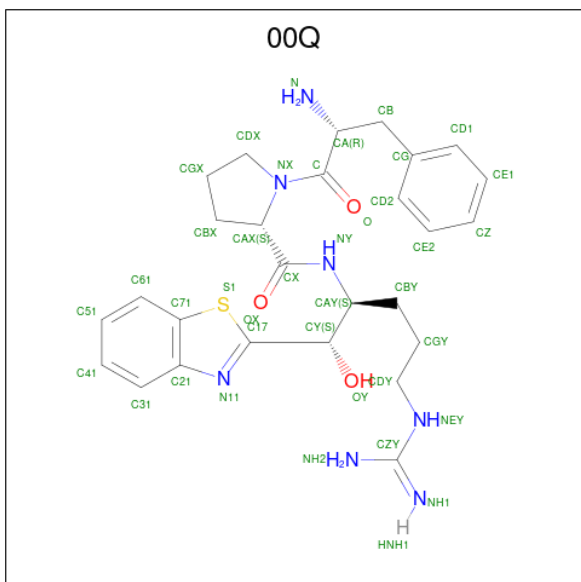
- Molecule 2 is a protein called ALPHA-THROMBIN.

Mol	Chain	Residues	Atoms					ZeroOcc	AltConf	Trace
			Total	C	N	O	S			
2	H	251	Total	C	N	O	S	0	0	0
			2032	1295	359	364	14			

- Molecule 3 is a protein called HIRUGEN.

Mol	Chain	Residues	Atoms					ZeroOcc	AltConf	Trace
			Total	C	N	O	S			
3	I	10	Total	C	N	O	S	0	0	0
			85	54	10	20	1			

- Molecule 4 is D-phenylalanyl-N-{(1S)-1-[(S)-1,3-benzothiazol-2-yl(hydroxy)methyl]-4-carbamimidamidobutyl}-L-prolinamide (three-letter code: 00Q) (formula: C₂₇H₃₅N₇O₃S).



Mol	Chain	Residues	Atoms					ZeroOcc	AltConf
4	H	1	Total	C	N	O	S	0	0
			38	27	7	3	1		

- Molecule 5 is SODIUM ION (three-letter code: NA) (formula: Na).

Mol	Chain	Residues	Atoms		ZeroOcc	AltConf
5	H	2	Total	Na	0	0
			2	2		

- Molecule 6 is water.

Mol	Chain	Residues	Atoms		ZeroOcc	AltConf
6	L	15	Total	O	0	0
			15	15		
6	H	107	Total	O	0	0
			107	107		
6	I	1	Total	O	0	0
			1	1		

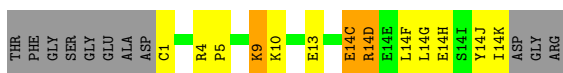
3 Residue-property plots [i](#)

These plots are drawn for all protein, RNA, DNA and oligosaccharide chains in the entry. The first graphic for a chain summarises the proportions of the various outlier classes displayed in the second graphic. The second graphic shows the sequence view annotated by issues in geometry. Residues are color-coded according to the number of geometric quality criteria for which they contain at least one outlier: green = 0, yellow = 1, orange = 2 and red = 3 or more. Stretches of 2 or more consecutive residues without any outlier are shown as a green connector. Residues present in the sample, but not in the model, are shown in grey.

Note EDS was not executed.

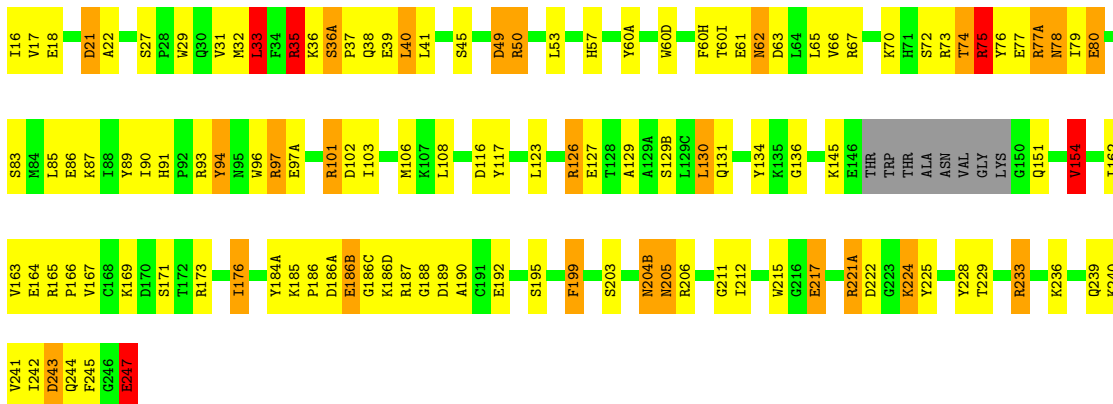
- Molecule 1: ALPHA-THROMBIN

Chain L: 

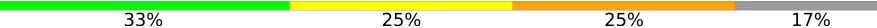


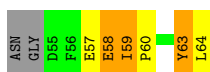
- Molecule 2: ALPHA-THROMBIN

Chain H: 



- Molecule 3: HIRUGEN

Chain I: 



4 Data and refinement statistics

Xtrriage (Phenix) and EDS were not executed - this section is therefore incomplete.

Property	Value	Source
Space group	C 1 2 1	Depositor
Cell constants a, b, c, α , β , γ	70.79Å 72.53Å 73.12Å 90.00° 101.00° 90.00°	Depositor
Resolution (Å)	7.00 – 2.30	Depositor
% Data completeness (in resolution range)	75.0 (7.00-2.30)	Depositor
R_{merge}	0.05	Depositor
R_{sym}	(Not available)	Depositor
Refinement program	X-PLOR	Depositor
R, R_{free}	0.158 , (Not available)	Depositor
Estimated twinning fraction	No twinning to report.	Xtrriage
Total number of atoms	2485	wwPDB-VP
Average B, all atoms (Å ²)	26.0	wwPDB-VP

5 Model quality i

5.1 Standard geometry i

Bond lengths and bond angles in the following residue types are not validated in this section: NA, TYS, 00Q

The Z score for a bond length (or angle) is the number of standard deviations the observed value is removed from the expected value. A bond length (or angle) with $|Z| > 5$ is considered an outlier worth inspection. RMSZ is the root-mean-square of all Z scores of the bond lengths (or angles).

Mol	Chain	Bond lengths		Bond angles	
		RMSZ	# Z >5	RMSZ	# Z >5
1	L	1.17	0/207	2.07	5/276 (1.8%)
2	H	1.19	1/2084 (0.0%)	2.08	72/2813 (2.6%)
3	I	0.99	0/69	1.66	0/91
All	All	1.19	1/2360 (0.0%)	2.07	77/3180 (2.4%)

Chiral center outliers are detected by calculating the chiral volume of a chiral center and verifying if the center is modelled as a planar moiety or with the opposite hand. A planarity outlier is detected by checking planarity of atoms in a peptide group, atoms in a mainchain group or atoms of a sidechain that are expected to be planar.

Mol	Chain	#Chirality outliers	#Planarity outliers
1	L	0	1

All (1) bond length outliers are listed below:

Mol	Chain	Res	Type	Atoms	Z	Observed(Å)	Ideal(Å)
2	H	78	ASN	N-CA	5.80	1.57	1.46

All (77) bond angle outliers are listed below:

Mol	Chain	Res	Type	Atoms	Z	Observed(°)	Ideal(°)
2	H	77(A)	ARG	NE-CZ-NH2	22.45	131.53	120.30
1	L	4	ARG	NE-CZ-NH1	15.64	128.12	120.30
2	H	101	ARG	NE-CZ-NH2	-14.98	112.81	120.30
2	H	97	ARG	NE-CZ-NH2	-14.12	113.24	120.30
2	H	35	ARG	NE-CZ-NH2	-11.61	114.49	120.30
2	H	77(A)	ARG	NE-CZ-NH1	-11.60	114.50	120.30
2	H	60(A)	TYR	CB-CG-CD1	-11.43	114.14	121.00
2	H	221(A)	ARG	NE-CZ-NH2	10.43	125.52	120.30
2	H	192	GLU	OE1-CD-OE2	-10.15	111.11	123.30

Continued on next page...

Continued from previous page...

Mol	Chain	Res	Type	Atoms	Z	Observed(°)	Ideal(°)
2	H	206	ARG	NE-CZ-NH2	-9.76	115.42	120.30
2	H	76	TYR	CB-CG-CD1	-9.26	115.45	121.00
2	H	173	ARG	NE-CZ-NH1	8.80	124.70	120.30
2	H	73	ARG	NE-CZ-NH2	-8.66	115.97	120.30
2	H	67	ARG	NE-CZ-NH1	8.29	124.44	120.30
2	H	94	TYR	CB-CG-CD1	8.23	125.94	121.00
2	H	75	ARG	NE-CZ-NH1	-8.12	116.24	120.30
2	H	184(A)	TYR	CB-CG-CD1	-8.12	116.13	121.00
2	H	77(A)	ARG	CD-NE-CZ	-7.94	112.48	123.60
2	H	77(A)	ARG	CA-C-N	7.85	134.47	117.20
2	H	94	TYR	CB-CG-CD2	-7.61	116.43	121.00
2	H	21	ASP	CB-CG-OD1	7.57	125.11	118.30
2	H	101	ARG	NE-CZ-NH1	7.54	124.07	120.30
2	H	116	ASP	CB-CG-OD1	7.54	125.08	118.30
2	H	60(A)	TYR	CB-CG-CD2	7.50	125.50	121.00
2	H	27	SER	N-CA-CB	-7.45	99.32	110.50
2	H	206	ARG	NE-CZ-NH1	7.40	124.00	120.30
2	H	73	ARG	NE-CZ-NH1	7.37	123.99	120.30
2	H	97(A)	GLU	CA-CB-CG	7.29	129.44	113.40
2	H	67	ARG	CD-NE-CZ	7.13	133.58	123.60
2	H	243	ASP	CB-CG-OD1	7.00	124.60	118.30
2	H	176	ILE	CA-CB-CG2	6.80	124.50	110.90
2	H	102	ASP	CB-CG-OD2	-6.75	112.23	118.30
2	H	117	TYR	CB-CG-CD2	-6.59	117.05	121.00
2	H	77	GLU	CB-CG-CD	6.53	131.83	114.20
2	H	75	ARG	NE-CZ-NH2	6.49	123.54	120.30
2	H	80	GLU	CG-CD-OE1	-6.42	105.46	118.30
2	H	126	ARG	CD-NE-CZ	-6.42	114.61	123.60
2	H	77(A)	ARG	C-N-CA	-6.37	105.78	121.70
2	H	97	ARG	NH1-CZ-NH2	6.36	126.39	119.40
1	L	13	GLU	CB-CA-C	-6.32	97.76	110.40
2	H	49	ASP	CB-CG-OD1	-6.31	112.62	118.30
2	H	74	THR	CA-CB-CG2	6.29	121.20	112.40
2	H	192	GLU	CG-CD-OE1	6.24	130.78	118.30
2	H	154	VAL	N-CA-CB	-6.20	97.86	111.50
2	H	21	ASP	CB-CG-OD2	-6.17	112.74	118.30
2	H	189	ASP	CB-CG-OD1	6.14	123.83	118.30
2	H	186(D)	LYS	N-CA-CB	6.07	121.53	110.60
2	H	206	ARG	CD-NE-CZ	6.07	132.10	123.60
2	H	154	VAL	CA-CB-CG1	6.05	119.97	110.90
2	H	77(A)	ARG	CA-C-O	-5.98	107.54	120.10
2	H	67	ARG	NH1-CZ-NH2	-5.94	112.87	119.40

Continued on next page...

Continued from previous page...

Mol	Chain	Res	Type	Atoms	Z	Observed(°)	Ideal(°)
1	L	13	GLU	O-C-N	5.91	132.16	122.70
2	H	228	TYR	CB-CG-CD1	5.86	124.51	121.00
2	H	225	TYR	CB-CG-CD1	-5.85	117.49	121.00
2	H	228	TYR	CB-CG-CD2	-5.78	117.53	121.00
2	H	224	LYS	O-C-N	-5.76	113.49	122.70
1	L	4	ARG	NE-CZ-NH2	-5.72	117.44	120.30
2	H	77(A)	ARG	N-CA-CB	5.72	120.90	110.60
2	H	22	ALA	N-CA-CB	-5.54	102.34	110.10
1	L	14(C)	GLU	CG-CD-OE1	-5.50	107.30	118.30
2	H	74	THR	N-CA-CB	-5.44	99.96	110.30
2	H	90	ILE	CB-CG1-CD1	5.39	128.98	113.90
2	H	184(A)	TYR	CB-CG-CD2	5.38	124.23	121.00
2	H	247	GLU	OE1-CD-OE2	5.38	129.75	123.30
2	H	127	GLU	CG-CD-OE1	5.36	129.02	118.30
2	H	86	GLU	OE1-CD-OE2	5.31	129.67	123.30
2	H	123	LEU	CA-CB-CG	5.29	127.47	115.30
2	H	163	VAL	CA-CB-CG1	5.26	118.79	110.90
2	H	60(D)	TRP	O-C-N	5.25	131.10	122.70
2	H	74	THR	N-CA-C	5.24	125.16	111.00
2	H	61	GLU	OE1-CD-OE2	-5.18	117.08	123.30
2	H	199	PHE	CB-CA-C	5.17	120.75	110.40
2	H	33	LEU	CA-CB-CG	5.12	127.07	115.30
2	H	192	GLU	CB-CG-CD	5.04	127.81	114.20
2	H	233	ARG	NE-CZ-NH1	5.03	122.81	120.30
2	H	217	GLU	CG-CD-OE2	-5.01	108.27	118.30
2	H	78	ASN	C-N-CA	5.01	134.21	121.70

There are no chirality outliers.

All (1) planarity outliers are listed below:

Mol	Chain	Res	Type	Group
1	L	14(D)	ARG	Sidechain

5.2 Too-close contacts

In the following table, the Non-H and H(model) columns list the number of non-hydrogen atoms and hydrogen atoms in the chain respectively. The H(added) column lists the number of hydrogen atoms added and optimized by MolProbity. The Clashes column lists the number of clashes within the asymmetric unit, whereas Symm-Clashes lists symmetry-related clashes.

Mol	Chain	Non-H	H(model)	H(added)	Clashes	Symm-Clashes
1	L	205	0	205	14	0
2	H	2032	0	2003	116	1
3	I	85	0	65	6	1
4	H	38	0	34	10	0
5	H	2	0	0	0	0
6	H	107	0	0	14	0
6	I	1	0	0	1	0
6	L	15	0	0	7	0
All	All	2485	0	2307	137	1

The all-atom clashscore is defined as the number of clashes found per 1000 atoms (including hydrogen atoms). The all-atom clashscore for this structure is 30.

All (137) close contacts within the same asymmetric unit are listed below, sorted by their clash magnitude.

Atom-1	Atom-2	Interatomic distance (Å)	Clash overlap (Å)
4:H:343:00Q:C17	4:H:343:00Q:CY	1.88	1.51
2:H:151:GLN:HG2	6:H:551:HOH:O	1.36	1.25
2:H:195:SER:OG	4:H:343:00Q:HY	1.05	1.22
2:H:41:LEU:CD1	6:H:619:HOH:O	1.92	1.16
2:H:236:LYS:HD2	2:H:236:LYS:H	1.03	1.08
2:H:77(A):ARG:HG2	6:H:714:HOH:O	1.58	1.02
2:H:236:LYS:HD2	2:H:236:LYS:N	1.77	0.99
2:H:35:ARG:O	2:H:38:GLN:HA	1.63	0.99
2:H:36:LYS:O	2:H:38:GLN:HG2	1.63	0.98
2:H:75:ARG:HH11	2:H:75:ARG:HG3	1.31	0.95
2:H:41:LEU:HD12	6:H:619:HOH:O	1.61	0.90
1:L:14(K):ILE:HG22	6:L:766:HOH:O	1.72	0.89
2:H:75:ARG:HG3	2:H:75:ARG:NH1	1.87	0.87
2:H:236:LYS:H	2:H:236:LYS:CD	1.89	0.85
2:H:195:SER:OG	4:H:343:00Q:C17	2.29	0.81
1:L:14(K):ILE:HA	6:L:766:HOH:O	1.82	0.80
2:H:195:SER:CB	4:H:343:00Q:HY	2.09	0.80
2:H:131:GLN:HG2	6:H:651:HOH:O	1.81	0.80
1:L:14(K):ILE:CG2	6:L:766:HOH:O	2.29	0.80
2:H:38:GLN:HE22	3:I:64:LEU:HD11	1.46	0.79
2:H:75:ARG:NH1	2:H:75:ARG:CG	2.45	0.79
2:H:50:ARG:NH1	2:H:108:LEU:O	2.17	0.78
2:H:195:SER:HG	4:H:343:00Q:HY	0.86	0.78
2:H:17:VAL:O	2:H:188:GLY:HA2	1.86	0.76
2:H:85:LEU:HD11	2:H:106:MET:HE1	1.65	0.76
3:I:58:GLU:H	3:I:58:GLU:CD	1.89	0.75

Continued on next page...

Continued from previous page...

Atom-1	Atom-2	Interatomic distance (Å)	Clash overlap (Å)
2:H:131:GLN:CD	6:H:651:HOH:O	2.25	0.75
2:H:32:MET:HG3	2:H:40:LEU:CD2	2.18	0.73
2:H:131:GLN:CG	6:H:651:HOH:O	2.34	0.73
2:H:60(I):THR:OG1	2:H:62:ASN:ND2	2.21	0.71
2:H:165:ARG:CG	2:H:169:LYS:HE3	2.21	0.70
1:L:14(D):ARG:O	1:L:14(H):GLU:HG3	1.92	0.69
2:H:244:GLN:OE1	2:H:245:PHE:CZ	2.45	0.69
1:L:14(H):GLU:OE2	6:L:623:HOH:O	2.11	0.68
2:H:32:MET:HG3	2:H:40:LEU:HD23	1.76	0.67
2:H:37:PRO:O	2:H:39:GLU:HG2	1.94	0.66
2:H:195:SER:CB	4:H:343:00Q:CY	2.71	0.66
2:H:36(A):SER:HA	2:H:37:PRO:C	2.15	0.66
2:H:18:GLU:HG3	2:H:187:ARG:HB2	1.79	0.65
2:H:204(B):ASN:C	2:H:204(B):ASN:HD22	1.99	0.64
2:H:33:LEU:CD1	2:H:41:LEU:HD23	2.27	0.64
2:H:33:LEU:HD13	2:H:41:LEU:HD23	1.80	0.64
2:H:195:SER:HG	4:H:343:00Q:CY	1.78	0.64
2:H:85:LEU:CD1	2:H:106:MET:HE1	2.28	0.63
2:H:165:ARG:HG3	2:H:169:LYS:HE3	1.80	0.63
2:H:38:GLN:NE2	3:I:64:LEU:HD11	2.14	0.62
2:H:41:LEU:CG	6:H:619:HOH:O	2.33	0.62
2:H:70:LYS:HE3	2:H:72:SER:O	1.99	0.62
2:H:165:ARG:CZ	2:H:169:LYS:CE	2.77	0.62
2:H:203:SER:O	2:H:205:ASN:HA	1.99	0.62
2:H:62:ASN:HD22	2:H:63:ASP:N	1.97	0.62
2:H:204(B):ASN:C	2:H:205:ASN:HD22	2.03	0.61
2:H:204(B):ASN:HD22	2:H:205:ASN:N	1.99	0.61
2:H:41:LEU:HG	6:H:619:HOH:O	1.98	0.61
2:H:36:LYS:HE3	2:H:62:ASN:O	2.02	0.60
2:H:78:ASN:ND2	6:H:714:HOH:O	2.34	0.60
2:H:62:ASN:ND2	6:H:645:HOH:O	2.34	0.60
4:H:343:00Q:CY	4:H:343:00Q:S1	2.91	0.59
2:H:186(A):ASP:O	2:H:186(C):GLY:N	2.37	0.58
2:H:32:MET:HG3	2:H:40:LEU:HD21	1.85	0.58
2:H:96:TRP:CZ3	2:H:97:ARG:HG2	2.39	0.58
2:H:17:VAL:O	2:H:18:GLU:HB2	2.05	0.56
2:H:49:ASP:N	2:H:49:ASP:OD1	2.37	0.56
2:H:70:LYS:NZ	2:H:80:GLU:OE2	2.34	0.56
2:H:41:LEU:HD11	2:H:60(H):PHE:CE2	2.42	0.55
2:H:75:ARG:HH11	2:H:75:ARG:CG	2.00	0.55
2:H:186(A):ASP:CG	2:H:186(B):GLU:H	2.10	0.54

Continued on next page...

Continued from previous page...

Atom-1	Atom-2	Interatomic distance (Å)	Clash overlap (Å)
1:L:14(G):LEU:HD22	1:L:14(G):LEU:N	2.22	0.54
2:H:91:HIS:CE1	2:H:101:ARG:HD3	2.43	0.53
2:H:136:GLY:HA3	2:H:199:PHE:CZ	2.44	0.53
2:H:204(B):ASN:C	2:H:204(B):ASN:ND2	2.59	0.53
2:H:85:LEU:CD1	2:H:106:MET:CE	2.86	0.52
2:H:185:LYS:O	2:H:186(B):GLU:HB2	2.09	0.52
2:H:93:ARG:O	2:H:101:ARG:HD2	2.09	0.52
1:L:1:CYS:N	6:L:746:HOH:O	1.94	0.52
2:H:164:GLU:HB2	2:H:166:PRO:HD2	1.91	0.52
2:H:171:SER:O	2:H:224:LYS:HE2	2.10	0.52
2:H:41:LEU:HD11	6:H:619:HOH:O	1.85	0.51
2:H:85:LEU:HD11	2:H:106:MET:CE	2.38	0.51
2:H:204(B):ASN:O	2:H:205:ASN:ND2	2.44	0.50
3:I:58:GLU:HG2	6:I:660:HOH:O	2.11	0.50
2:H:186:PRO:HB3	2:H:222:ASP:HB3	1.92	0.50
1:L:14(C):GLU:O	1:L:14(G):LEU:HD23	2.12	0.50
2:H:165:ARG:CZ	2:H:169:LYS:NZ	2.75	0.50
2:H:211:GLY:HA2	2:H:229:THR:O	2.11	0.50
2:H:129:ALA:O	2:H:130:LEU:HB2	2.11	0.49
2:H:21:ASP:HB3	2:H:154:VAL:CG1	2.42	0.49
4:H:343:00Q:C17	4:H:343:00Q:CAY	2.83	0.49
2:H:62:ASN:CG	6:H:645:HOH:O	2.51	0.49
3:I:59:ILE:HB	3:I:60:PRO:HD2	1.93	0.49
1:L:14(D):ARG:NE	1:L:14(H):GLU:OE2	2.46	0.49
2:H:186(A):ASP:CG	2:H:186(B):GLU:N	2.66	0.49
2:H:57:HIS:NE2	4:H:343:00Q:N11	2.60	0.48
2:H:62:ASN:ND2	2:H:63:ASP:OD1	2.45	0.48
2:H:130:LEU:HD23	2:H:130:LEU:HA	1.55	0.48
2:H:96:TRP:CH2	2:H:97:ARG:HG2	2.48	0.48
2:H:165:ARG:NE	2:H:169:LYS:NZ	2.61	0.48
1:L:14(J):TYR:O	1:L:14(K):ILE:C	2.52	0.48
2:H:165:ARG:NE	2:H:169:LYS:HZ1	2.11	0.48
2:H:165:ARG:NH2	2:H:169:LYS:HZ3	2.11	0.48
2:H:62:ASN:HD22	2:H:62:ASN:C	2.17	0.47
3:I:60:PRO:O	3:I:63:TYS:N	2.46	0.47
2:H:134:TYR:O	2:H:162:ILE:HG12	2.15	0.46
2:H:165:ARG:CZ	2:H:169:LYS:HE2	2.44	0.46
1:L:10:LYS:CE	6:L:613:HOH:O	2.63	0.46
2:H:36(A):SER:HA	2:H:38:GLN:N	2.30	0.46
2:H:16:ILE:HD13	2:H:190:ALA:HA	1.98	0.46
2:H:32:MET:CG	2:H:40:LEU:HD23	2.45	0.45

Continued on next page...

Continued from previous page...

Atom-1	Atom-2	Interatomic distance (Å)	Clash overlap (Å)
1:L:14(H):GLU:HG2	6:L:546:HOH:O	2.15	0.45
2:H:85:LEU:HD13	2:H:106:MET:HE2	1.99	0.44
2:H:165:ARG:N	2:H:166:PRO:CD	2.80	0.44
2:H:33:LEU:HD12	2:H:41:LEU:HD23	1.99	0.44
2:H:244:GLN:CD	2:H:245:PHE:CZ	2.91	0.44
2:H:29:TRP:O	2:H:45:SER:HA	2.18	0.43
2:H:85:LEU:HD13	2:H:106:MET:CE	2.49	0.43
2:H:244:GLN:O	2:H:244:GLN:CG	2.66	0.43
1:L:5:PRO:HA	1:L:9:LYS:HG2	2.01	0.43
2:H:164:GLU:HG2	2:H:167:VAL:CG2	2.49	0.43
2:H:78:ASN:CG	6:H:714:HOH:O	2.57	0.43
2:H:241:VAL:O	2:H:245:PHE:HD2	2.02	0.42
2:H:203:SER:HB3	2:H:204(B):ASN:ND2	2.34	0.42
2:H:165:ARG:N	2:H:166:PRO:HD2	2.34	0.42
2:H:85:LEU:HD22	2:H:106:MET:HB3	2.01	0.42
2:H:53:LEU:HD11	2:H:103:ILE:HD11	2.01	0.42
2:H:176:ILE:CD1	2:H:215:TRP:HZ2	2.33	0.41
2:H:87:LYS:HG2	2:H:89:TYR:CZ	2.55	0.41
2:H:221(A):ARG:HH11	2:H:221(A):ARG:HD2	1.65	0.41
2:H:242:ILE:HG23	2:H:247:GLU:HG3	2.03	0.41
2:H:77(A):ARG:HH11	2:H:77(A):ARG:HD3	1.40	0.41
1:L:14(G):LEU:N	1:L:14(G):LEU:CD2	2.84	0.41
2:H:70:LYS:HE3	2:H:70:LYS:HB3	1.91	0.41
2:H:31:VAL:HG12	2:H:32:MET:N	2.34	0.41
2:H:164:GLU:CD	2:H:164:GLU:H	2.22	0.41
2:H:212:ILE:HD12	2:H:229:THR:HB	2.03	0.41
2:H:36(A):SER:CA	2:H:37:PRO:C	2.88	0.40
2:H:126:ARG:HH11	2:H:126:ARG:HD2	1.66	0.40
2:H:233:ARG:HE	2:H:233:ARG:HB3	1.70	0.40

All (1) symmetry-related close contacts are listed below. The label for Atom-2 includes the symmetry operator and encoded unit-cell translations to be applied.

Atom-1	Atom-2	Interatomic distance (Å)	Clash overlap (Å)
2:H:75:ARG:NH1	3:I:57:GLU:OE1[2_555]	1.76	0.44

5.3 Torsion angles [i](#)

5.3.1 Protein backbone [i](#)

In the following table, the Percentiles column shows the percent Ramachandran outliers of the chain as a percentile score with respect to all X-ray entries followed by that with respect to entries of similar resolution.

The Analysed column shows the number of residues for which the backbone conformation was analysed, and the total number of residues.

Mol	Chain	Analysed	Favoured	Allowed	Outliers	Percentiles	
1	L	23/36 (64%)	21 (91%)	2 (9%)	0	100	100
2	H	247/259 (95%)	235 (95%)	11 (4%)	1 (0%)	34	42
3	I	7/12 (58%)	7 (100%)	0	0	100	100
All	All	277/307 (90%)	263 (95%)	13 (5%)	1 (0%)	34	42

All (1) Ramachandran outliers are listed below:

Mol	Chain	Res	Type
2	H	186(B)	GLU

5.3.2 Protein sidechains [i](#)

In the following table, the Percentiles column shows the percent sidechain outliers of the chain as a percentile score with respect to all X-ray entries followed by that with respect to entries of similar resolution.

The Analysed column shows the number of residues for which the sidechain conformation was analysed, and the total number of residues.

Mol	Chain	Analysed	Rotameric	Outliers	Percentiles	
1	L	23/31 (74%)	21 (91%)	2 (9%)	10	12
2	H	219/225 (97%)	195 (89%)	24 (11%)	6	7
3	I	7/10 (70%)	5 (71%)	2 (29%)	0	0
All	All	249/266 (94%)	221 (89%)	28 (11%)	6	6

All (28) residues with a non-rotameric sidechain are listed below:

Mol	Chain	Res	Type
1	L	9	LYS
1	L	14(F)	LEU

Continued on next page...

Continued from previous page...

Mol	Chain	Res	Type
2	H	33	LEU
2	H	35	ARG
2	H	36(A)	SER
2	H	40	LEU
2	H	50	ARG
2	H	62	ASN
2	H	65	LEU
2	H	66	VAL
2	H	74	THR
2	H	75	ARG
2	H	79	ILE
2	H	83	SER
2	H	94	TYR
2	H	129(B)	SER
2	H	130	LEU
2	H	145	LYS
2	H	154	VAL
2	H	204(B)	ASN
2	H	205	ASN
2	H	217	GLU
2	H	239	GLN
2	H	240	LYS
2	H	243	ASP
2	H	247	GLU
3	I	58	GLU
3	I	59	ILE

Sometimes sidechains can be flipped to improve hydrogen bonding and reduce clashes. All (6) such sidechains are listed below:

Mol	Chain	Res	Type
2	H	38	GLN
2	H	62	ASN
2	H	78	ASN
2	H	156	GLN
2	H	204(B)	ASN
2	H	205	ASN

5.3.3 RNA [i](#)

There are no RNA molecules in this entry.

5.4 Non-standard residues in protein, DNA, RNA chains [i](#)

1 non-standard protein/DNA/RNA residue is modelled in this entry.

In the following table, the Counts columns list the number of bonds (or angles) for which Mogul statistics could be retrieved, the number of bonds (or angles) that are observed in the model and the number of bonds (or angles) that are defined in the Chemical Component Dictionary. The Link column lists molecule types, if any, to which the group is linked. The Z score for a bond length (or angle) is the number of standard deviations the observed value is removed from the expected value. A bond length (or angle) with $|Z| > 2$ is considered an outlier worth inspection. RMSZ is the root-mean-square of all Z scores of the bond lengths (or angles).

Mol	Type	Chain	Res	Link	Bond lengths			Bond angles		
					Counts	RMSZ	# Z > 2	Counts	RMSZ	# Z > 2
3	TYS	I	63	3	15,16,17	2.08	3 (20%)	18,22,24	1.80	3 (16%)

In the following table, the Chirals column lists the number of chiral outliers, the number of chiral centers analysed, the number of these observed in the model and the number defined in the Chemical Component Dictionary. Similar counts are reported in the Torsion and Rings columns. '-' means no outliers of that kind were identified.

Mol	Type	Chain	Res	Link	Chirals	Torsions	Rings
3	TYS	I	63	3	-	3/10/11/13	0/1/1/1

All (3) bond length outliers are listed below:

Mol	Chain	Res	Type	Atoms	Z	Observed(Å)	Ideal(Å)
3	I	63	TYS	OH-S	5.79	1.67	1.58
3	I	63	TYS	OH-CZ	-4.18	1.35	1.42
3	I	63	TYS	CB-CA	2.20	1.58	1.53

All (3) bond angle outliers are listed below:

Mol	Chain	Res	Type	Atoms	Z	Observed(°)	Ideal(°)
3	I	63	TYS	CG-CB-CA	-5.15	103.67	114.10
3	I	63	TYS	OH-S-O2	-2.75	99.68	107.71
3	I	63	TYS	O2-S-O1	2.64	122.82	112.22

There are no chirality outliers.

All (3) torsion outliers are listed below:

Mol	Chain	Res	Type	Atoms
3	I	63	TYS	O-C-CA-CB
3	I	63	TYS	CZ-OH-S-O2

Continued on next page...

Continued from previous page...

Mol	Chain	Res	Type	Atoms
3	I	63	TYS	C-CA-CB-CG

There are no ring outliers.

1 monomer is involved in 1 short contact:

Mol	Chain	Res	Type	Clashes	Symm-Clashes
3	I	63	TYS	1	0

5.5 Carbohydrates [i](#)

There are no monosaccharides in this entry.

5.6 Ligand geometry [i](#)

Of 3 ligands modelled in this entry, 2 are monoatomic - leaving 1 for Mogul analysis.

In the following table, the Counts columns list the number of bonds (or angles) for which Mogul statistics could be retrieved, the number of bonds (or angles) that are observed in the model and the number of bonds (or angles) that are defined in the Chemical Component Dictionary. The Link column lists molecule types, if any, to which the group is linked. The Z score for a bond length (or angle) is the number of standard deviations the observed value is removed from the expected value. A bond length (or angle) with $|Z| > 2$ is considered an outlier worth inspection. RMSZ is the root-mean-square of all Z scores of the bond lengths (or angles).

Mol	Type	Chain	Res	Link	Bond lengths			Bond angles		
					Counts	RMSZ	# Z > 2	Counts	RMSZ	# Z > 2
4	00Q	H	343	2	39,41,41	2.31	5 (12%)	47,56,56	1.63	11 (23%)

In the following table, the Chirals column lists the number of chiral outliers, the number of chiral centers analysed, the number of these observed in the model and the number defined in the Chemical Component Dictionary. Similar counts are reported in the Torsion and Rings columns. '-' means no outliers of that kind were identified.

Mol	Type	Chain	Res	Link	Chirals	Torsions	Rings
4	00Q	H	343	2	-	0/31/45/45	0/4/4/4

All (5) bond length outliers are listed below:

Mol	Chain	Res	Type	Atoms	Z	Observed(Å)	Ideal(Å)
4	H	343	00Q	C17-CY	9.38	1.88	1.50
4	H	343	00Q	OY-CY	-8.76	1.25	1.42

Continued on next page...

Continued from previous page...

Mol	Chain	Res	Type	Atoms	Z	Observed(Å)	Ideal(Å)
4	H	343	00Q	C17-S1	2.67	1.81	1.73
4	H	343	00Q	C51-C41	2.42	1.44	1.38
4	H	343	00Q	CE2-CD2	2.28	1.43	1.38

All (11) bond angle outliers are listed below:

Mol	Chain	Res	Type	Atoms	Z	Observed(°)	Ideal(°)
4	H	343	00Q	OY-CY-CAY	4.08	118.91	107.99
4	H	343	00Q	CBY-CAY-NY	3.53	114.97	110.33
4	H	343	00Q	NEY-CZY-NH1	-3.06	115.32	120.70
4	H	343	00Q	C21-C71-S1	-3.01	107.86	111.85
4	H	343	00Q	C71-C21-N11	2.98	114.98	108.04
4	H	343	00Q	O-C-NX	2.66	126.12	121.38
4	H	343	00Q	CAY-NY-CX	2.64	127.74	123.07
4	H	343	00Q	O-C-CA	-2.64	114.86	119.66
4	H	343	00Q	C31-C21-N11	-2.47	123.61	130.78
4	H	343	00Q	CBX-CAX-CX	2.36	116.25	111.22
4	H	343	00Q	CGX-CBX-CAX	2.16	108.70	104.18

There are no chirality outliers.

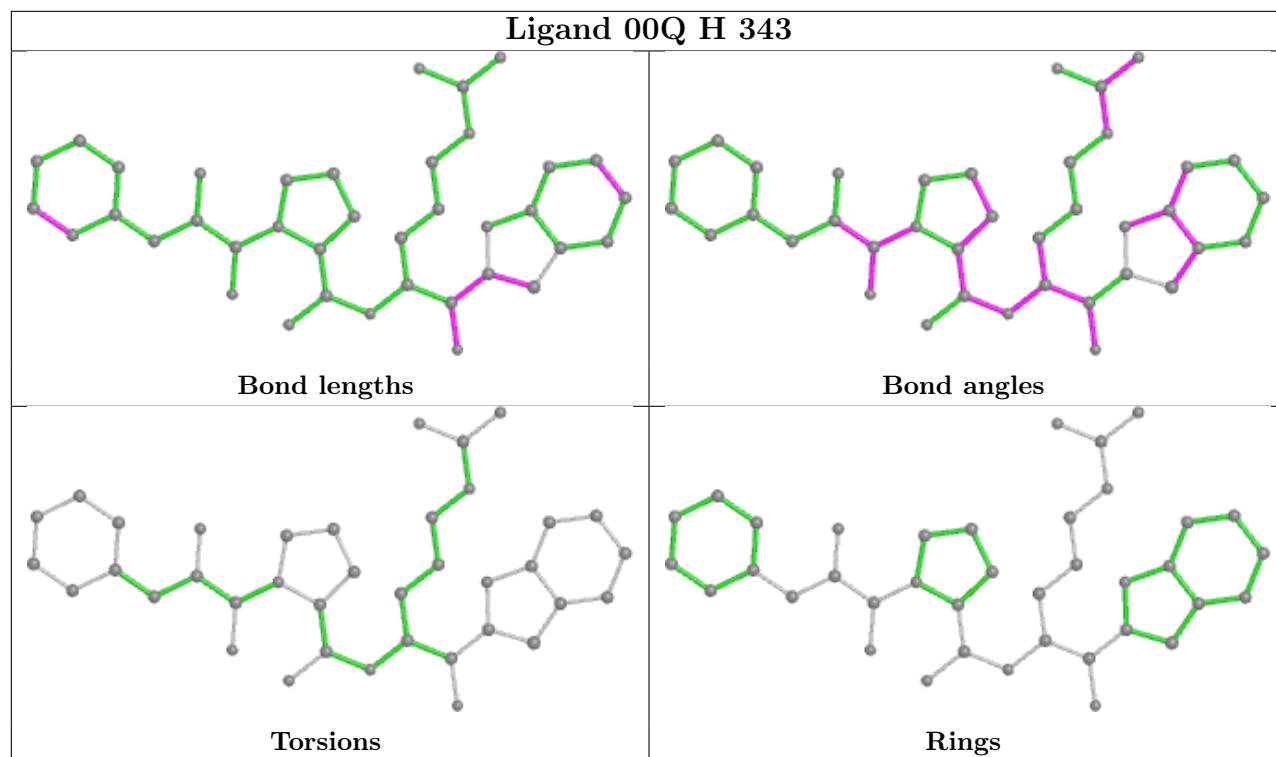
There are no torsion outliers.

There are no ring outliers.

1 monomer is involved in 10 short contacts:

Mol	Chain	Res	Type	Clashes	Symm-Clashes
4	H	343	00Q	10	0

The following is a two-dimensional graphical depiction of Mogul quality analysis of bond lengths, bond angles, torsion angles, and ring geometry for all instances of the Ligand of Interest. In addition, ligands with molecular weight > 250 and outliers as shown on the validation Tables will also be included. For torsion angles, if less than 5% of the Mogul distribution of torsion angles is within 10 degrees of the torsion angle in question, then that torsion angle is considered an outlier. Any bond that is central to one or more torsion angles identified as an outlier by Mogul will be highlighted in the graph. For rings, the root-mean-square deviation (RMSD) between the ring in question and similar rings identified by Mogul is calculated over all ring torsion angles. If the average RMSD is greater than 60 degrees and the minimal RMSD between the ring in question and any Mogul-identified rings is also greater than 60 degrees, then that ring is considered an outlier. The outliers are highlighted in purple. The color gray indicates Mogul did not find sufficient equivalents in the CSD to analyse the geometry.



5.7 Other polymers [i](#)

There are no such residues in this entry.

5.8 Polymer linkage issues [i](#)

There are no chain breaks in this entry.

6 Fit of model and data

6.1 Protein, DNA and RNA chains

EDS was not executed - this section is therefore empty.

6.2 Non-standard residues in protein, DNA, RNA chains

EDS was not executed - this section is therefore empty.

6.3 Carbohydrates

EDS was not executed - this section is therefore empty.

6.4 Ligands

EDS was not executed - this section is therefore empty.

6.5 Other polymers

EDS was not executed - this section is therefore empty.