



Full wwPDB X-ray Structure Validation Report ⓘ

Nov 12, 2024 – 12:46 AM EST

PDB ID : 1TA2
Title : Crystal structure of thrombin in complex with compound 1
Authors : Tucker, T.J.; Brady, S.F.; Lumma, W.C.; Lewis, S.D.; Gardel, S.J.; Naylor-Olsen, A.M.; Yan, Y.; Sisko, J.T.; Stauffer, K.J.; Lucas, B.Y.; Lynch, J.J.; Cook, J.J.; Stranieri, M.T.; Holahan, M.A.; Lyle, E.A.; Baskin, E.P.; Chen, I.-W.; Dancheck, K.B.; Krueger, J.A.; Cooper, C.M.; Vacca, J.P.
Deposited on : 2004-05-19
Resolution : 2.30 Å(reported)

This is a Full wwPDB X-ray Structure Validation Report for a publicly released PDB entry.

We welcome your comments at validation@mail.wwpdb.org

A user guide is available at

<https://www.wwpdb.org/validation/2017/XrayValidationReportHelp>

with specific help available everywhere you see the ⓘ symbol.

The types of validation reports are described at

<http://www.wwpdb.org/validation/2017/FAQs#types>.

The following versions of software and data (see [references ⓘ](#)) were used in the production of this report:

MolProbity : 4.02b-467
Mogul : 2022.3.0, CSD as543be (2022)
Xtrriage (Phenix) : **NOT EXECUTED**
EDS : **NOT EXECUTED**
buster-report : 1.1.7 (2018)
Percentile statistics : 20231227.v01 (using entries in the PDB archive December 27th 2023)
Ideal geometry (proteins) : Engh & Huber (2001)
Ideal geometry (DNA, RNA) : Parkinson et al. (1996)
Validation Pipeline (wwPDB-VP) : 2.39

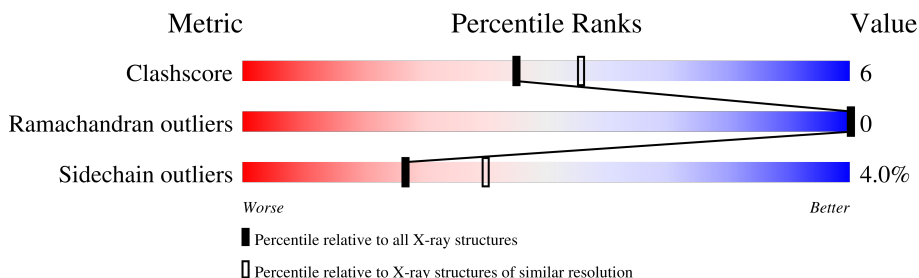
1 Overall quality at a glance i

The following experimental techniques were used to determine the structure:

X-RAY DIFFRACTION

The reported resolution of this entry is 2.30 Å.

Percentile scores (ranging between 0-100) for global validation metrics of the entry are shown in the following graphic. The table shows the number of entries on which the scores are based.



Metric	Whole archive (#Entries)	Similar resolution (#Entries, resolution range(Å))
Clashscore	180529	6698 (2.30-2.30)
Ramachandran outliers	177936	6640 (2.30-2.30)
Sidechain outliers	177891	6640 (2.30-2.30)

The table below summarises the geometric issues observed across the polymeric chains and their fit to the electron density. The red, orange, yellow and green segments of the lower bar indicate the fraction of residues that contain outliers for ≥ 3 , 2, 1 and 0 types of geometric quality criteria respectively. A grey segment represents the fraction of residues that are not modelled. The numeric value for each fraction is indicated below the corresponding segment, with a dot representing fractions $\leq 5\%$.

Note EDS was not executed.

Mol	Chain	Length	Quality of chain
1	A	287	 75% 18% . .
2	B	11	 73% 27%

2 Entry composition

There are 4 unique types of molecules in this entry. The entry contains 2510 atoms, of which 0 are hydrogens and 0 are deuteriums.

In the tables below, the ZeroOcc column contains the number of atoms modelled with zero occupancy, the AltConf column contains the number of residues with at least one atom in alternate conformation and the Trace column contains the number of residues modelled with at most 2 atoms.

- Molecule 1 is a protein called thrombin.

Mol	Chain	Residues	Atoms					ZeroOcc	AltConf	Trace
			Total	C	N	O	S			
1	A	276	2228	1419	392	402	15	0	0	0

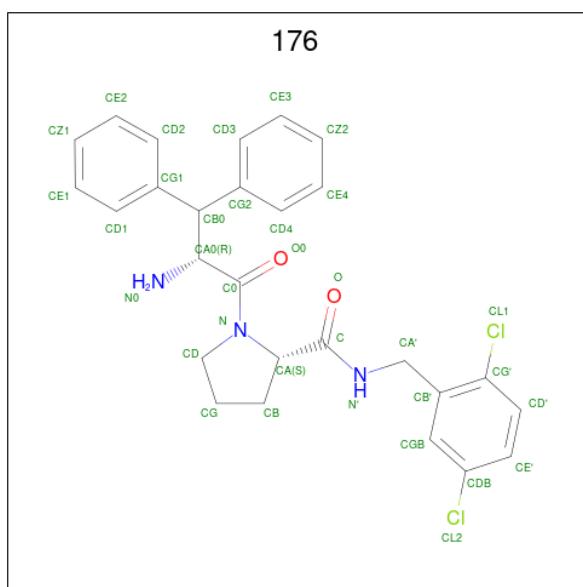
- Molecule 2 is a protein called Hirudin.

Mol	Chain	Residues	Atoms					ZeroOcc	AltConf	Trace
			Total	C	N	O	S			
2	B	11	96	60	11	24	1	0	0	0

There are 2 discrepancies between the modelled and reference sequences:

Chain	Residue	Modelled	Actual	Comment	Reference
B	362	ALA	GLU	conflict	UNP P28504
B	365	ALA	GLN	conflict	UNP P28504

- Molecule 3 is 1-(2-AMINO-3,3-DIPHENYL-PROPIONYL)-PYRROLIDINE-3-CARBOXYLIC ACID 2,5-DICHLORO-BENZYLAMIDE (three-letter code: 176) (formula: C₂₇H₂₇Cl₂N₃O₂).



Mol	Chain	Residues	Atoms					ZeroOcc	AltConf
			Total	C	Cl	N	O		
3	A	1	34	27	2	3	2	0	0

- Molecule 4 is water.

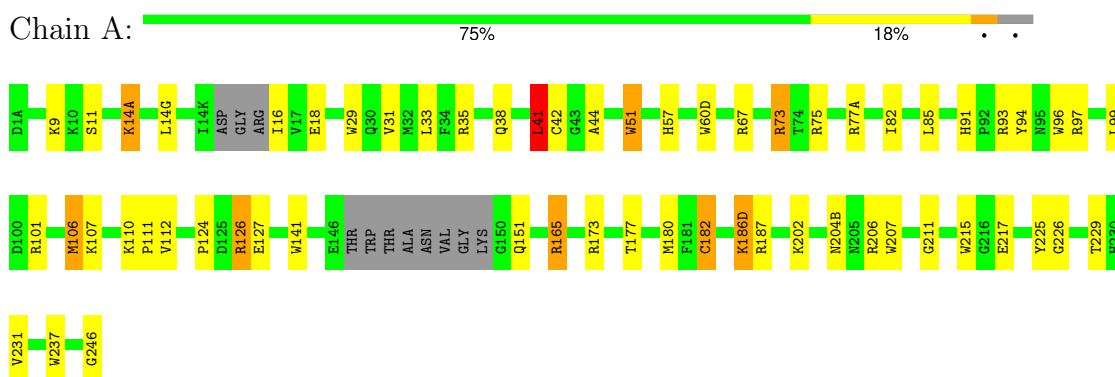
Mol	Chain	Residues	Atoms		ZeroOcc	AltConf
4	A	150	Total	O	0	0
			150	150		
4	B	2	Total	O	0	0
			2	2		

3 Residue-property plots [i](#)

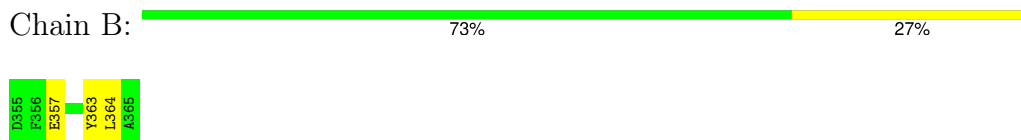
These plots are drawn for all protein, RNA, DNA and oligosaccharide chains in the entry. The first graphic for a chain summarises the proportions of the various outlier classes displayed in the second graphic. The second graphic shows the sequence view annotated by issues in geometry. Residues are color-coded according to the number of geometric quality criteria for which they contain at least one outlier: green = 0, yellow = 1, orange = 2 and red = 3 or more. Stretches of 2 or more consecutive residues without any outlier are shown as a green connector. Residues present in the sample, but not in the model, are shown in grey.

Note EDS was not executed.

- Molecule 1: thrombin



- Molecule 2: Hirudin



4 Data and refinement statistics

Xtriage (Phenix) and EDS were not executed - this section is therefore incomplete.

Property	Value	Source
Space group	C 1 2 1	Depositor
Cell constants a, b, c, α , β , γ	70.81Å 72.36Å 72.96Å 90.00° 100.90° 90.00°	Depositor
Resolution (Å)	8.00 – 2.30	Depositor
% Data completeness (in resolution range)	(Not available) (8.00-2.30)	Depositor
R_{merge}	0.06	Depositor
R_{sym}	0.06	Depositor
Refinement program	X-PLOR 3.1	Depositor
R, R_{free}	0.150 , (Not available)	Depositor
Estimated twinning fraction	No twinning to report.	Xtriage
Total number of atoms	2510	wwPDB-VP
Average B, all atoms (Å ²)	32.0	wwPDB-VP

5 Model quality i

5.1 Standard geometry i

Bond lengths and bond angles in the following residue types are not validated in this section: 176, TYS

The Z score for a bond length (or angle) is the number of standard deviations the observed value is removed from the expected value. A bond length (or angle) with $|Z| > 5$ is considered an outlier worth inspection. RMSZ is the root-mean-square of all Z scores of the bond lengths (or angles).

Mol	Chain	Bond lengths		Bond angles	
		RMSZ	# Z >5	RMSZ	# Z >5
1	A	0.87	0/2282	1.64	48/3079 (1.6%)
2	B	0.80	0/80	1.21	0/105
All	All	0.87	0/2362	1.62	48/3184 (1.5%)

There are no bond length outliers.

All (48) bond angle outliers are listed below:

Mol	Chain	Res	Type	Atoms	Z	Observed(°)	Ideal(°)
1	A	237	TRP	CD1-CG-CD2	9.64	114.01	106.30
1	A	29	TRP	CD1-CG-CD2	9.62	114.00	106.30
1	A	96	TRP	CD1-CG-CD2	9.03	113.52	106.30
1	A	73	ARG	NE-CZ-NH1	8.79	124.69	120.30
1	A	215	TRP	CD1-CG-CD2	8.70	113.26	106.30
1	A	207	TRP	CD1-CG-CD2	8.60	113.18	106.30
1	A	94	TYR	CB-CG-CD2	-8.21	116.07	121.00
1	A	60(D)	TRP	CD1-CG-CD2	8.02	112.71	106.30
1	A	96	TRP	CE2-CD2-CG	-7.88	101.00	107.30
1	A	141	TRP	CD1-CG-CD2	7.75	112.50	106.30
1	A	29	TRP	CE2-CD2-CG	-7.68	101.16	107.30
1	A	97	ARG	NE-CZ-NH2	-7.67	116.47	120.30
1	A	215	TRP	CE2-CD2-CG	-7.58	101.23	107.30
1	A	237	TRP	CE2-CD2-CG	-7.57	101.24	107.30
1	A	93	ARG	NE-CZ-NH1	-7.30	116.65	120.30
1	A	77(A)	ARG	NE-CZ-NH2	-7.15	116.72	120.30
1	A	207	TRP	CE2-CD2-CG	-7.11	101.61	107.30
1	A	141	TRP	CE2-CD2-CG	-6.98	101.72	107.30
1	A	165	ARG	NE-CZ-NH1	6.89	123.75	120.30
1	A	29	TRP	CG-CD1-NE1	-6.78	103.33	110.10
1	A	51	TRP	CE2-CD2-CG	-6.71	101.94	107.30
1	A	51	TRP	CG-CD2-CE3	6.67	139.90	133.90

Continued on next page...

Continued from previous page...

Mol	Chain	Res	Type	Atoms	Z	Observed(°)	Ideal(°)
1	A	77(A)	ARG	NE-CZ-NH1	6.66	123.63	120.30
1	A	237	TRP	CG-CD1-NE1	-6.59	103.50	110.10
1	A	165	ARG	NE-CZ-NH2	-6.52	117.04	120.30
1	A	60(D)	TRP	CE2-CD2-CG	-6.48	102.12	107.30
1	A	225	TYR	CB-CG-CD2	-6.27	117.24	121.00
1	A	97	ARG	NE-CZ-NH1	6.27	123.43	120.30
1	A	231	VAL	CG1-CB-CG2	-6.26	100.89	110.90
1	A	14(A)	LYS	CA-CB-CG	6.20	127.03	113.40
1	A	51	TRP	CD1-CG-CD2	5.85	110.98	106.30
1	A	207	TRP	CG-CD1-NE1	-5.77	104.33	110.10
1	A	206	ARG	NE-CZ-NH2	5.76	123.18	120.30
1	A	173	ARG	NE-CZ-NH2	-5.71	117.44	120.30
1	A	96	TRP	CB-CG-CD1	-5.70	119.59	127.00
1	A	207	TRP	CG-CD2-CE3	5.65	138.98	133.90
1	A	41	LEU	CB-CG-CD1	-5.43	101.77	111.00
1	A	51	TRP	CB-CG-CD1	-5.43	119.94	127.00
1	A	106	MET	CG-SD-CE	-5.41	91.55	100.20
1	A	94	TYR	CB-CG-CD1	5.41	124.24	121.00
1	A	180	MET	CA-CB-CG	5.38	122.44	113.30
1	A	215	TRP	CG-CD2-CE3	5.31	138.68	133.90
1	A	57	HIS	CA-CB-CG	5.25	122.53	113.60
1	A	173	ARG	CA-CB-CG	5.25	124.95	113.40
1	A	96	TRP	CG-CD1-NE1	-5.20	104.90	110.10
1	A	173	ARG	NE-CZ-NH1	5.16	122.88	120.30
1	A	9	LYS	CA-CB-CG	-5.14	102.09	113.40
1	A	215	TRP	CB-CG-CD1	-5.05	120.43	127.00

There are no chirality outliers.

There are no planarity outliers.

5.2 Too-close contacts

In the following table, the Non-H and H(model) columns list the number of non-hydrogen atoms and hydrogen atoms in the chain respectively. The H(added) column lists the number of hydrogen atoms added and optimized by MolProbity. The Clashes column lists the number of clashes within the asymmetric unit, whereas Symm-Clashes lists symmetry-related clashes.

Mol	Chain	Non-H	H(model)	H(added)	Clashes	Symm-Clashes
1	A	2228	0	2193	25	0
2	B	96	0	77	3	0
3	A	34	0	27	4	0

Continued on next page...

Continued from previous page...

Mol	Chain	Non-H	H(model)	H(added)	Clashes	Symm-Clashes
4	A	150	0	0	2	0
4	B	2	0	0	0	0
All	All	2510	0	2297	27	0

The all-atom clashscore is defined as the number of clashes found per 1000 atoms (including hydrogen atoms). The all-atom clashscore for this structure is 6.

All (27) close contacts within the same asymmetric unit are listed below, sorted by their clash magnitude.

Atom-1	Atom-2	Interatomic distance (Å)	Clash overlap (Å)
1:A:38:GLN:HE22	2:B:364:LEU:HD21	1.62	0.64
1:A:75:ARG:HH11	2:B:357:GLU:HB2	1.63	0.63
1:A:14(G):LEU:HD21	1:A:202:LYS:HD3	1.82	0.61
3:A:401:176:HD1	3:A:401:176:HD2A	1.84	0.60
3:A:401:176:HD2A	3:A:401:176:CD1	2.34	0.58
1:A:18:GLU:HG3	1:A:187:ARG:HG3	1.88	0.56
1:A:33:LEU:HD12	1:A:42:CYS:HB2	1.89	0.54
1:A:16:ILE:N	4:A:796:HOH:O	2.42	0.53
1:A:38:GLN:NE2	2:B:364:LEU:HD21	2.25	0.51
1:A:73:ARG:HD2	4:A:660:HOH:O	2.11	0.50
1:A:217:GLU:HG2	3:A:401:176:CE4	2.41	0.50
1:A:107:LYS:NZ	1:A:246:GLY:HA3	2.28	0.49
1:A:67:ARG:HG2	1:A:82:ILE:HG12	1.95	0.48
1:A:165:ARG:NH2	1:A:177:THR:O	2.46	0.48
1:A:35:ARG:HB2	1:A:41:LEU:HD21	1.96	0.47
1:A:75:ARG:HD3	1:A:75:ARG:HA	1.68	0.47
1:A:110:LYS:HD3	1:A:111:PRO:CD	2.46	0.46
1:A:182:CYS:HA	1:A:226:GLY:O	2.17	0.45
1:A:99:LEU:HD11	3:A:401:176:HG1	2.00	0.44
1:A:85:LEU:HD22	1:A:106:MET:HB3	2.01	0.42
1:A:110:LYS:HD3	1:A:111:PRO:HD3	2.00	0.42
1:A:31:VAL:HB	1:A:44:ALA:HB3	2.02	0.42
1:A:186(D):LYS:HB2	1:A:186(D):LYS:NZ	2.35	0.42
1:A:211:GLY:HA2	1:A:229:THR:O	2.20	0.41
1:A:126:ARG:HB3	1:A:127:GLU:OE1	2.20	0.41
1:A:91:HIS:CE1	1:A:101:ARG:HD3	2.56	0.40
1:A:51:TRP:CZ2	1:A:107:LYS:HD3	2.56	0.40

There are no symmetry-related clashes.

5.3 Torsion angles [i](#)

5.3.1 Protein backbone [i](#)

In the following table, the Percentiles column shows the percent Ramachandran outliers of the chain as a percentile score with respect to all X-ray entries followed by that with respect to entries of similar resolution.

The Analysed column shows the number of residues for which the backbone conformation was analysed, and the total number of residues.

Mol	Chain	Analysed	Favoured	Allowed	Outliers	Percentiles	
1	A	270/287 (94%)	258 (96%)	12 (4%)	0	100	100
2	B	8/11 (73%)	8 (100%)	0	0	100	100
All	All	278/298 (93%)	266 (96%)	12 (4%)	0	100	100

There are no Ramachandran outliers to report.

5.3.2 Protein sidechains [i](#)

In the following table, the Percentiles column shows the percent sidechain outliers of the chain as a percentile score with respect to all X-ray entries followed by that with respect to entries of similar resolution.

The Analysed column shows the number of residues for which the sidechain conformation was analysed, and the total number of residues.

Mol	Chain	Analysed	Rotameric	Outliers	Percentiles	
1	A	240/251 (96%)	230 (96%)	10 (4%)	25	37
2	B	8/8 (100%)	8 (100%)	0	100	100
All	All	248/259 (96%)	238 (96%)	10 (4%)	27	40

All (10) residues with a non-rotameric sidechain are listed below:

Mol	Chain	Res	Type
1	A	11	SER
1	A	14(A)	LYS
1	A	41	LEU
1	A	112	VAL
1	A	124	PRO
1	A	126	ARG
1	A	151	GLN
1	A	182	CYS

Continued on next page...

Continued from previous page...

Mol	Chain	Res	Type
1	A	186(D)	LYS
1	A	204(B)	ASN

Sometimes sidechains can be flipped to improve hydrogen bonding and reduce clashes. All (3) such sidechains are listed below:

Mol	Chain	Res	Type
1	A	30	GLN
1	A	156	GLN
1	A	204(B)	ASN

5.3.3 RNA [i](#)

There are no RNA molecules in this entry.

5.4 Non-standard residues in protein, DNA, RNA chains [i](#)

1 non-standard protein/DNA/RNA residue is modelled in this entry.

In the following table, the Counts columns list the number of bonds (or angles) for which Mogul statistics could be retrieved, the number of bonds (or angles) that are observed in the model and the number of bonds (or angles) that are defined in the Chemical Component Dictionary. The Link column lists molecule types, if any, to which the group is linked. The Z score for a bond length (or angle) is the number of standard deviations the observed value is removed from the expected value. A bond length (or angle) with $|Z| > 2$ is considered an outlier worth inspection. RMSZ is the root-mean-square of all Z scores of the bond lengths (or angles).

Mol	Type	Chain	Res	Link	Bond lengths			Bond angles		
					Counts	RMSZ	# Z > 2	Counts	RMSZ	# Z > 2
2	TYS	B	363	2	15,16,17	3.19	2 (13%)	15,22,24	1.09	1 (6%)

In the following table, the Chirals column lists the number of chiral outliers, the number of chiral centers analysed, the number of these observed in the model and the number defined in the Chemical Component Dictionary. Similar counts are reported in the Torsion and Rings columns. '2' means no outliers of that kind were identified.

Mol	Type	Chain	Res	Link	Chirals	Torsions	Rings
2	TYS	B	363	2	-	2/10/11/13	0/1/1/1

All (2) bond length outliers are listed below:

Mol	Chain	Res	Type	Atoms	Z	Observed(Å)	Ideal(Å)
2	B	363	TYS	OH-CZ	-11.05	1.24	1.42
2	B	363	TYS	OH-S	-5.01	1.48	1.58

All (1) bond angle outliers are listed below:

Mol	Chain	Res	Type	Atoms	Z	Observed(°)	Ideal(°)
2	B	363	TYS	OH-S-O2	2.97	116.62	107.56

There are no chirality outliers.

All (2) torsion outliers are listed below:

Mol	Chain	Res	Type	Atoms
2	B	363	TYS	O-C-CA-CB
2	B	363	TYS	CZ-OH-S-O1

There are no ring outliers.

No monomer is involved in short contacts.

5.5 Carbohydrates [i](#)

There are no oligosaccharides in this entry.

5.6 Ligand geometry [i](#)

1 ligand is modelled in this entry.

In the following table, the Counts columns list the number of bonds (or angles) for which Mogul statistics could be retrieved, the number of bonds (or angles) that are observed in the model and the number of bonds (or angles) that are defined in the Chemical Component Dictionary. The Link column lists molecule types, if any, to which the group is linked. The Z score for a bond length (or angle) is the number of standard deviations the observed value is removed from the expected value. A bond length (or angle) with $|Z| > 2$ is considered an outlier worth inspection. RMSZ is the root-mean-square of all Z scores of the bond lengths (or angles).

Mol	Type	Chain	Res	Link	Bond lengths			Bond angles		
					Counts	RMSZ	# Z > 2	Counts	RMSZ	# Z > 2
3	176	A	401	-	37,37,37	0.72	0	50,51,51	1.31	7 (14%)

In the following table, the Chirals column lists the number of chiral outliers, the number of chiral centers analysed, the number of these observed in the model and the number defined in the Chemical Component Dictionary. Similar counts are reported in the Torsion and Rings columns.

'-' means no outliers of that kind were identified.

Mol	Type	Chain	Res	Link	Chirals	Torsions	Rings
3	176	A	401	-	-	4/29/39/39	0/4/4/4

There are no bond length outliers.

All (7) bond angle outliers are listed below:

Mol	Chain	Res	Type	Atoms	Z	Observed(°)	Ideal(°)
3	A	401	176	C0-CA0-N0	-3.18	104.74	110.09
3	A	401	176	CB'-CG'-CL1	-3.07	114.86	119.75
3	A	401	176	CD'-CG'-CB'	2.97	126.82	122.19
3	A	401	176	CD'-CE'-CDB	-2.60	116.62	119.24
3	A	401	176	CG1-CB0-CA0	2.59	117.97	113.14
3	A	401	176	CD4-CG2-CD3	2.09	120.89	118.30
3	A	401	176	CA'-CB'-CG'	2.01	123.73	121.08

There are no chirality outliers.

All (4) torsion outliers are listed below:

Mol	Chain	Res	Type	Atoms
3	A	401	176	O-C-CA-N
3	A	401	176	N'-C-CA-N
3	A	401	176	N'-CA'-CB'-CG'
3	A	401	176	N0-CA0-CB0-CG2

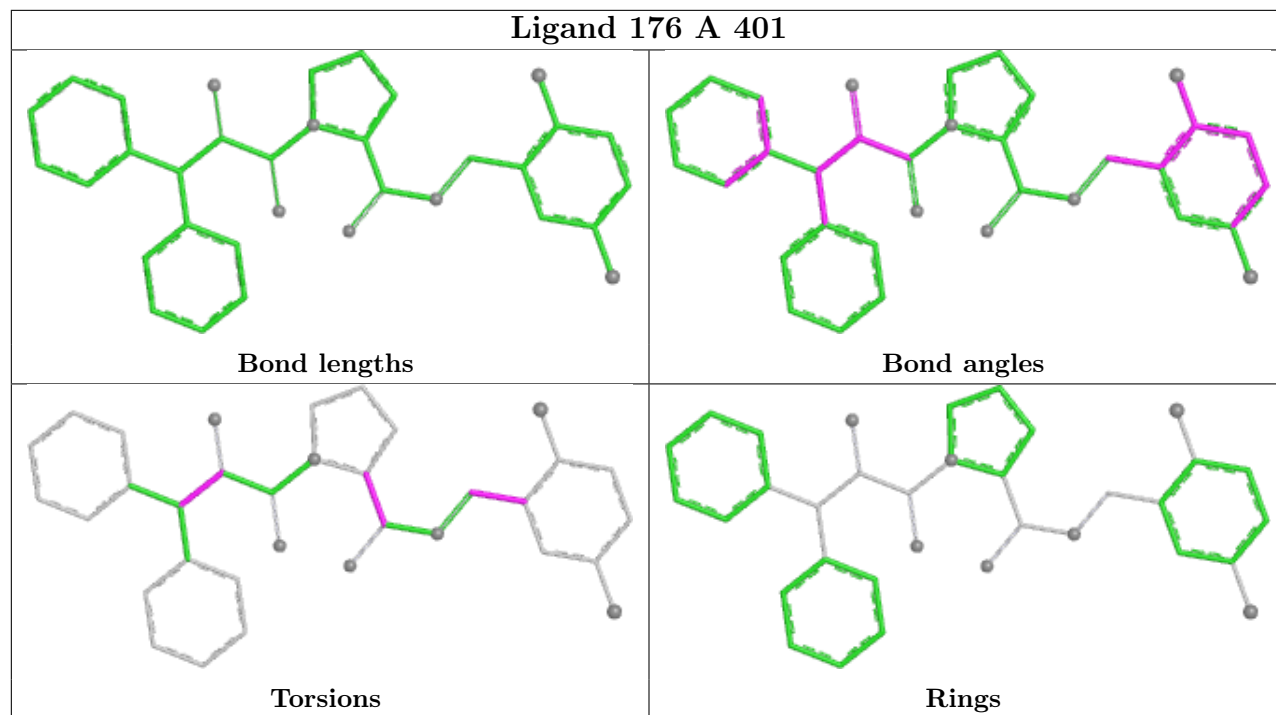
There are no ring outliers.

1 monomer is involved in 4 short contacts:

Mol	Chain	Res	Type	Clashes	Symm-Clashes
3	A	401	176	4	0

The following is a two-dimensional graphical depiction of Mogul quality analysis of bond lengths, bond angles, torsion angles, and ring geometry for all instances of the Ligand of Interest. In addition, ligands with molecular weight > 250 and outliers as shown on the validation Tables will also be included. For torsion angles, if less than 5% of the Mogul distribution of torsion angles is within 10 degrees of the torsion angle in question, then that torsion angle is considered an outlier. Any bond that is central to one or more torsion angles identified as an outlier by Mogul will be highlighted in the graph. For rings, the root-mean-square deviation (RMSD) between the ring in question and similar rings identified by Mogul is calculated over all ring torsion angles. If the average RMSD is greater than 60 degrees and the minimal RMSD between the ring in question and any Mogul-identified rings is also greater than 60 degrees, then that ring is considered an outlier. The outliers are highlighted in purple. The color gray indicates Mogul did not find sufficient

equivalents in the CSD to analyse the geometry.



5.7 Other polymers [i](#)

There are no such residues in this entry.

5.8 Polymer linkage issues [i](#)

There are no chain breaks in this entry.

6 Fit of model and data

6.1 Protein, DNA and RNA chains

EDS was not executed - this section is therefore empty.

6.2 Non-standard residues in protein, DNA, RNA chains

EDS was not executed - this section is therefore empty.

6.3 Carbohydrates

EDS was not executed - this section is therefore empty.

6.4 Ligands

EDS was not executed - this section is therefore empty.

6.5 Other polymers

EDS was not executed - this section is therefore empty.