



Full wwPDB X-ray Structure Validation Report ⓘ

Dec 10, 2022 – 05:34 PM EST

PDB ID : 1SWN
Title : CORE-STREPTAVIDIN MUTANT W108F IN COMPLEX WITH BIOTIN
AT PH 7.0
Authors : Freitag, S.; Le Trong, I.; Chilkoti, A.; Klumb, L.A.; Stayton, P.S.; Stenkamp,
R.E.
Deposited on : 1998-01-27
Resolution : 2.20 Å(reported)

This is a Full wwPDB X-ray Structure Validation Report for a publicly released PDB entry.

We welcome your comments at validation@mail.wwpdb.org

A user guide is available at

<https://www.wwpdb.org/validation/2017/XrayValidationReportHelp>

with specific help available everywhere you see the ⓘ symbol.

The types of validation reports are described at

<http://www.wwpdb.org/validation/2017/FAQs#types>.

The following versions of software and data (see [references ⓘ](#)) were used in the production of this report:

MolProbity : 4.02b-467
Mogul : 1.8.5 (274361), CSD as541be (2020)
Xtriage (Phenix) : 1.13
EDS : 2.31.2
Percentile statistics : 20191225.v01 (using entries in the PDB archive December 25th 2019)
Refmac : 5.8.0158
CCP4 : 7.0.044 (Gargrove)
Ideal geometry (proteins) : Engh & Huber (2001)
Ideal geometry (DNA, RNA) : Parkinson et al. (1996)
Validation Pipeline (wwPDB-VP) : 2.31.2

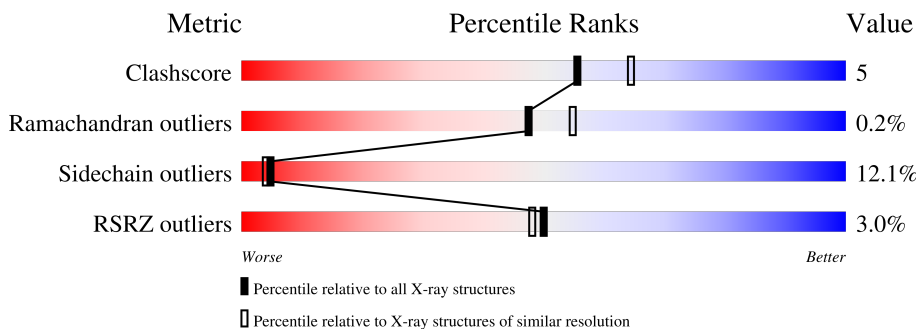
1 Overall quality at a glance

The following experimental techniques were used to determine the structure:

X-RAY DIFFRACTION

The reported resolution of this entry is 2.20 Å.

Percentile scores (ranging between 0-100) for global validation metrics of the entry are shown in the following graphic. The table shows the number of entries on which the scores are based.



Metric	Whole archive (#Entries)	Similar resolution (#Entries, resolution range(Å))
Clashscore	141614	5594 (2.20-2.20)
Ramachandran outliers	138981	5503 (2.20-2.20)
Sidechain outliers	138945	5504 (2.20-2.20)
RSRZ outliers	127900	4800 (2.20-2.20)

The table below summarises the geometric issues observed across the polymeric chains and their fit to the electron density. The red, orange, yellow and green segments of the lower bar indicate the fraction of residues that contain outliers for ≥ 3 , 2, 1 and 0 types of geometric quality criteria respectively. A grey segment represents the fraction of residues that are not modelled. The numeric value for each fraction is indicated below the corresponding segment, with a dot representing fractions $\leq 5\%$. The upper red bar (where present) indicates the fraction of residues that have poor fit to the electron density. The numeric value is given above the bar.

Mol	Chain	Length	Quality of chain
1	A	127	 2% 83% 10% • 6%
1	B	127	 4% 73% 14% • • 10%
1	C	127	 % 79% 10% • • 7%
1	D	127	 4% 77% 14% • 7%

2 Entry composition

There are 3 unique types of molecules in this entry. The entry contains 3750 atoms, of which 0 are hydrogens and 0 are deuteriums.

In the tables below, the ZeroOcc column contains the number of atoms modelled with zero occupancy, the AltConf column contains the number of residues with at least one atom in alternate conformation and the Trace column contains the number of residues modelled with at most 2 atoms.

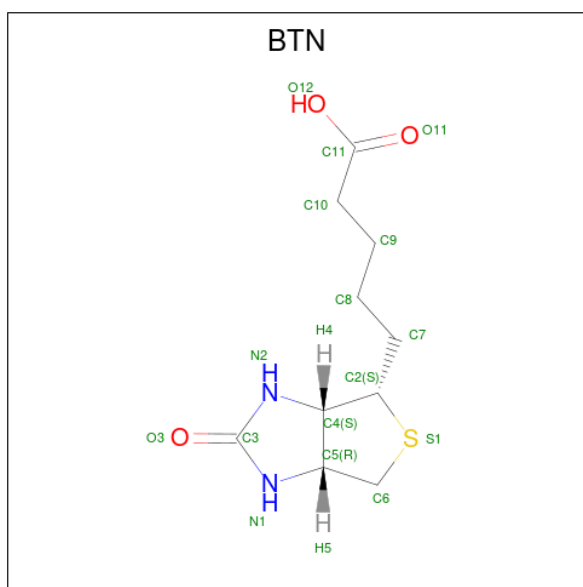
- Molecule 1 is a protein called CORE-STREPTAVIDIN.

Mol	Chain	Residues	Atoms				ZeroOcc	AltConf	Trace
			Total	C	N	O			
1	A	120	895	560	155	180	0	0	0
1	B	114	857	536	148	173	0	0	0
1	C	118	879	549	152	178	0	0	0
1	D	118	879	549	152	178	0	0	0

There are 4 discrepancies between the modelled and reference sequences:

Chain	Residue	Modelled	Actual	Comment	Reference
A	108	PHE	TRP	engineered mutation	UNP P22629
B	108	PHE	TRP	engineered mutation	UNP P22629
C	108	PHE	TRP	engineered mutation	UNP P22629
D	108	PHE	TRP	engineered mutation	UNP P22629

- Molecule 2 is BIOTIN (three-letter code: BTN) (formula: C₁₀H₁₆N₂O₃S).



Mol	Chain	Residues	Atoms					ZeroOcc	AltConf
			Total	C	N	O	S		
2	A	1	Total	C	N	O	S	0	0
			16	10	2	3	1		
2	C	1	Total	C	N	O	S	0	0
			16	10	2	3	1		
2	D	1	Total	C	N	O	S	0	0
			16	10	2	3	1		

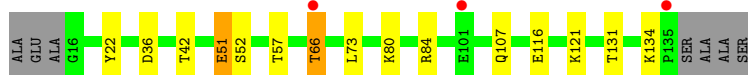
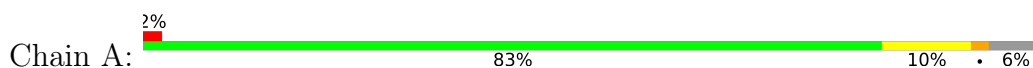
- Molecule 3 is water.

Mol	Chain	Residues	Atoms		ZeroOcc	AltConf
3	A	50	Total	O	0	0
			50	50		
3	B	45	Total	O	0	0
			45	45		
3	C	45	Total	O	0	0
			45	45		
3	D	52	Total	O	0	0
			52	52		

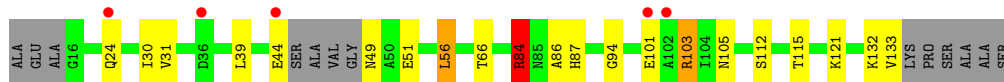
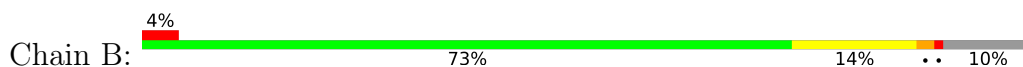
3 Residue-property plots [i](#)

These plots are drawn for all protein, RNA, DNA and oligosaccharide chains in the entry. The first graphic for a chain summarises the proportions of the various outlier classes displayed in the second graphic. The second graphic shows the sequence view annotated by issues in geometry and electron density. Residues are color-coded according to the number of geometric quality criteria for which they contain at least one outlier: green = 0, yellow = 1, orange = 2 and red = 3 or more. A red dot above a residue indicates a poor fit to the electron density ($RSRZ > 2$). Stretches of 2 or more consecutive residues without any outlier are shown as a green connector. Residues present in the sample, but not in the model, are shown in grey.

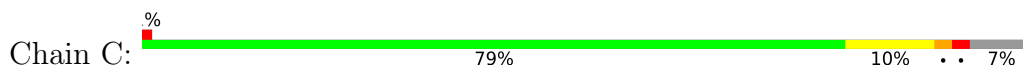
- Molecule 1: CORE-STREPTAVIDIN



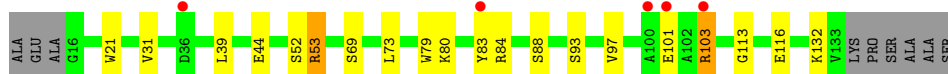
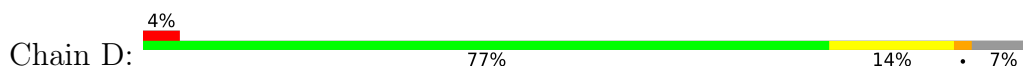
- Molecule 1: CORE-STREPTAVIDIN



- Molecule 1: CORE-STREPTAVIDIN



- Molecule 1: CORE-STREPTAVIDIN



4 Data and refinement statistics

Property	Value	Source
Space group	P 1 21 1	Depositor
Cell constants a, b, c, α , β , γ	59.60Å 88.70Å 48.00Å 90.00° 98.80° 90.00°	Depositor
Resolution (Å)	10.00 – 2.20 9.97 – 2.24	Depositor EDS
% Data completeness (in resolution range)	81.0 (10.00-2.20) 79.9 (9.97-2.24)	Depositor EDS
R_{merge}	0.06	Depositor
R_{sym}	(Not available)	Depositor
$\langle I/\sigma(I) \rangle$ ¹	1.19 (at 2.24Å)	Xtrriage
Refinement program	SHELXL-97, X-PLOR	Depositor
R, R_{free}	0.181 , 0.268 0.179 , (Not available)	Depositor DCC
R_{free} test set	No test flags present.	wwPDB-VP
Wilson B-factor (Å ²)	24.8	Xtrriage
Anisotropy	0.312	Xtrriage
Bulk solvent k_{sol} (e/Å ³), B_{sol} (Å ²)	0.23 , 89.7	EDS
L-test for twinning ²	$\langle L \rangle = 0.50$, $\langle L^2 \rangle = 0.33$	Xtrriage
Estimated twinning fraction	No twinning to report.	Xtrriage
F_o, F_c correlation	0.95	EDS
Total number of atoms	3750	wwPDB-VP
Average B, all atoms (Å ²)	29.0	wwPDB-VP

Xtrriage's analysis on translational NCS is as follows: *The largest off-origin peak in the Patterson function is 6.04% of the height of the origin peak. No significant pseudotranslation is detected.*

¹Intensities estimated from amplitudes.

²Theoretical values of $\langle |L| \rangle$, $\langle L^2 \rangle$ for acentric reflections are 0.5, 0.333 respectively for untwinned datasets, and 0.375, 0.2 for perfectly twinned datasets.

5 Model quality [i](#)

5.1 Standard geometry [i](#)

Bond lengths and bond angles in the following residue types are not validated in this section: BTN

The Z score for a bond length (or angle) is the number of standard deviations the observed value is removed from the expected value. A bond length (or angle) with $|Z| > 5$ is considered an outlier worth inspection. RMSZ is the root-mean-square of all Z scores of the bond lengths (or angles).

Mol	Chain	Bond lengths		Bond angles	
		RMSZ	# Z >5	RMSZ	# Z >5
1	A	0.30	0/917	0.97	1/1254 (0.1%)
1	B	0.31	0/877	0.96	2/1198 (0.2%)
1	C	0.30	0/900	0.92	1/1231 (0.1%)
1	D	0.32	0/900	0.98	1/1231 (0.1%)
All	All	0.31	0/3594	0.96	5/4914 (0.1%)

There are no bond length outliers.

All (5) bond angle outliers are listed below:

Mol	Chain	Res	Type	Atoms	Z	Observed(°)	Ideal(°)
1	C	84	ARG	NE-CZ-NH1	7.15	123.87	120.30
1	D	113	GLY	C-N-CA	6.96	139.11	121.70
1	B	56	LEU	CA-CB-CG	6.90	131.18	115.30
1	B	84	ARG	NE-CZ-NH1	6.47	123.53	120.30
1	A	36	ASP	CB-CG-OD1	5.63	123.37	118.30

There are no chirality outliers.

There are no planarity outliers.

5.2 Too-close contacts [i](#)

In the following table, the Non-H and H(model) columns list the number of non-hydrogen atoms and hydrogen atoms in the chain respectively. The H(added) column lists the number of hydrogen atoms added and optimized by MolProbity. The Clashes column lists the number of clashes within the asymmetric unit, whereas Symm-Clashes lists symmetry-related clashes.

Mol	Chain	Non-H	H(model)	H(added)	Clashes	Symm-Clashes
1	A	895	0	842	4	0
1	B	857	0	799	11	0

Continued on next page...

Continued from previous page...

Mol	Chain	Non-H	H(model)	H(added)	Clashes	Symm-Clashes
1	C	879	0	822	14	0
1	D	879	0	822	6	0
2	A	16	0	15	0	0
2	C	16	0	14	1	0
2	D	16	0	15	1	0
3	A	50	0	0	3	0
3	B	45	0	0	2	0
3	C	45	0	0	0	0
3	D	52	0	0	0	0
All	All	3750	0	3329	35	0

The all-atom clashscore is defined as the number of clashes found per 1000 atoms (including hydrogen atoms). The all-atom clashscore for this structure is 5.

All (35) close contacts within the same asymmetric unit are listed below, sorted by their clash magnitude.

Atom-1	Atom-2	Interatomic distance (Å)	Clash overlap (Å)
1:C:51:GLU:O	1:C:52:SER:HB2	1.32	1.08
1:C:51:GLU:O	1:C:52:SER:CB	2.13	0.92
3:A:363:HOH:O	1:B:115:THR:HA	1.94	0.67
1:B:84:ARG:HD3	3:B:342:HOH:O	1.95	0.66
1:D:21:TRP:CZ2	1:D:132:LYS:HE3	2.34	0.63
1:C:120:TRP:CZ2	1:C:121:LYS:HE3	2.36	0.61
3:A:363:HOH:O	1:B:115:THR:HG22	2.01	0.61
1:C:47:VAL:O	1:C:47:VAL:HG23	1.99	0.61
1:A:22:TYR:CE1	1:A:134:LYS:HE3	2.38	0.59
1:B:101:GLU:O	1:B:101:GLU:HG3	2.06	0.54
1:D:79:TRP:HD1	1:D:88:SER:HG	1.55	0.53
1:D:79:TRP:CZ2	2:D:600:BTN:H81	2.45	0.52
1:C:131:THR:OG1	1:C:133:VAL:HG23	2.13	0.49
1:C:51:GLU:O	1:C:51:GLU:HG2	2.13	0.48
1:B:132:LYS:HB2	3:B:236:HOH:O	2.13	0.46
1:C:47:VAL:O	1:C:47:VAL:CG2	2.64	0.46
1:D:97:VAL:HB	1:D:103:ARG:CD	2.46	0.46
1:D:44:GLU:OE2	1:D:53:ARG:NH1	2.50	0.45
1:C:49:ASN:OD1	1:C:84:ARG:NH2	2.50	0.45
1:A:66:THR:O	1:A:66:THR:HG23	2.16	0.45
1:A:121:LYS:NZ	3:A:381:HOH:O	2.49	0.45
1:B:86:ALA:O	1:B:87:HIS:HB2	2.16	0.45
1:A:51:GLU:OE1	1:A:84:ARG:NH1	2.50	0.45
1:B:101:GLU:O	1:B:103:ARG:NH2	2.50	0.45

Continued on next page...

Continued from previous page...

Atom-1	Atom-2	Interatomic distance (Å)	Clash overlap (Å)
1:B:30:ILE:N	1:B:30:ILE:HD12	2.32	0.45
1:C:51:GLU:OE1	1:C:84:ARG:HD2	2.16	0.45
1:C:51:GLU:OE1	1:C:84:ARG:NH1	2.50	0.44
1:B:94:GLY:HA3	1:B:105:ASN:O	2.17	0.43
1:C:24:GLN:H	1:C:24:GLN:CD	2.22	0.43
1:C:79:TRP:CZ2	2:C:500:BTN:H81	2.55	0.42
1:C:101:GLU:OE1	1:C:103:ARG:NH2	2.50	0.41
1:B:101:GLU:O	1:B:103:ARG:NE	2.53	0.41
1:D:83:TYR:O	1:D:84:ARG:HB2	2.21	0.41
1:B:49:ASN:ND2	1:B:51:GLU:HB2	2.36	0.40
1:C:51:GLU:O	1:C:51:GLU:CG	2.69	0.40

There are no symmetry-related clashes.

5.3 Torsion angles [i](#)

5.3.1 Protein backbone [i](#)

In the following table, the Percentiles column shows the percent Ramachandran outliers of the chain as a percentile score with respect to all X-ray entries followed by that with respect to entries of similar resolution.

The Analysed column shows the number of residues for which the backbone conformation was analysed, and the total number of residues.

Mol	Chain	Analysed	Favoured	Allowed	Outliers	Percentiles	
1	A	118/127 (93%)	111 (94%)	7 (6%)	0	100	100
1	B	110/127 (87%)	108 (98%)	2 (2%)	0	100	100
1	C	116/127 (91%)	113 (97%)	2 (2%)	1 (1%)	17	16
1	D	116/127 (91%)	113 (97%)	3 (3%)	0	100	100
All	All	460/508 (91%)	445 (97%)	14 (3%)	1 (0%)	47	55

All (1) Ramachandran outliers are listed below:

Mol	Chain	Res	Type
1	C	52	SER

5.3.2 Protein sidechains [i](#)

In the following table, the Percentiles column shows the percent sidechain outliers of the chain as a percentile score with respect to all X-ray entries followed by that with respect to entries of similar resolution.

The Analysed column shows the number of residues for which the sidechain conformation was analysed, and the total number of residues.

Mol	Chain	Analysed	Rotameric	Outliers	Percentiles	
1	A	89/92 (97%)	79 (89%)	10 (11%)	6	5
1	B	85/92 (92%)	74 (87%)	11 (13%)	4	3
1	C	87/92 (95%)	77 (88%)	10 (12%)	5	5
1	D	87/92 (95%)	76 (87%)	11 (13%)	4	3
All	All	348/368 (95%)	306 (88%)	42 (12%)	5	4

All (42) residues with a non-rotameric sidechain are listed below:

Mol	Chain	Res	Type
1	A	42	THR
1	A	51	GLU
1	A	52	SER
1	A	57	THR
1	A	66	THR
1	A	73	LEU
1	A	80	LYS
1	A	107	GLN
1	A	116	GLU
1	A	131	THR
1	B	24	GLN
1	B	31	VAL
1	B	39	LEU
1	B	44	GLU
1	B	56	LEU
1	B	66	THR
1	B	84	ARG
1	B	103	ARG
1	B	112	SER
1	B	121	LYS
1	B	133	VAL
1	C	39	LEU
1	C	40	THR
1	C	44	GLU

Continued on next page...

Continued from previous page...

Mol	Chain	Res	Type
1	C	52	SER
1	C	73	LEU
1	C	84	ARG
1	C	101	GLU
1	C	103	ARG
1	C	121	LYS
1	C	128	ASP
1	D	31	VAL
1	D	39	LEU
1	D	52	SER
1	D	53	ARG
1	D	69	SER
1	D	73	LEU
1	D	80	LYS
1	D	93	SER
1	D	101	GLU
1	D	103	ARG
1	D	116	GLU

Sometimes sidechains can be flipped to improve hydrogen bonding and reduce clashes. All (4) such sidechains are listed below:

Mol	Chain	Res	Type
1	A	95	GLN
1	B	49	ASN
1	C	95	GLN
1	C	105	ASN

5.3.3 RNA [i](#)

There are no RNA molecules in this entry.

5.4 Non-standard residues in protein, DNA, RNA chains [i](#)

There are no non-standard protein/DNA/RNA residues in this entry.

5.5 Carbohydrates [i](#)

There are no monosaccharides in this entry.

5.6 Ligand geometry

3 ligands are modelled in this entry.

In the following table, the Counts columns list the number of bonds (or angles) for which Mogul statistics could be retrieved, the number of bonds (or angles) that are observed in the model and the number of bonds (or angles) that are defined in the Chemical Component Dictionary. The Link column lists molecule types, if any, to which the group is linked. The Z score for a bond length (or angle) is the number of standard deviations the observed value is removed from the expected value. A bond length (or angle) with $|Z| > 2$ is considered an outlier worth inspection. RMSZ is the root-mean-square of all Z scores of the bond lengths (or angles).

Mol	Type	Chain	Res	Link	Bond lengths			Bond angles		
					Counts	RMSZ	# Z > 2	Counts	RMSZ	# Z > 2
2	BTN	A	300	-	17,17,17	0.75	0	23,23,23	1.08	1 (4%)
2	BTN	C	500	-	17,17,17	0.71	0	23,23,23	1.26	3 (13%)
2	BTN	D	600	-	17,17,17	0.68	0	23,23,23	1.39	5 (21%)

In the following table, the Chirals column lists the number of chiral outliers, the number of chiral centers analysed, the number of these observed in the model and the number defined in the Chemical Component Dictionary. Similar counts are reported in the Torsion and Rings columns. '-' means no outliers of that kind were identified.

Mol	Type	Chain	Res	Link	Chirals	Torsions	Rings
2	BTN	A	300	-	-	0/7/28/28	0/2/2/2
2	BTN	C	500	-	-	6/7/28/28	0/2/2/2
2	BTN	D	600	-	-	7/7/28/28	0/2/2/2

There are no bond length outliers.

All (9) bond angle outliers are listed below:

Mol	Chain	Res	Type	Atoms	Z	Observed(°)	Ideal(°)
2	D	600	BTN	C8-C7-C2	2.75	119.43	113.86
2	C	500	BTN	O12-C11-C10	2.56	122.26	114.03
2	D	600	BTN	O12-C11-C10	2.56	122.25	114.03
2	D	600	BTN	C7-C2-S1	2.42	119.33	112.64
2	D	600	BTN	C9-C10-C11	-2.26	108.76	114.47
2	C	500	BTN	C8-C7-C2	2.22	118.36	113.86
2	D	600	BTN	O11-C11-C10	-2.18	116.08	123.08
2	C	500	BTN	O11-C11-C10	-2.09	116.38	123.08
2	A	300	BTN	O12-C11-C10	2.08	120.71	114.03

There are no chirality outliers.

All (13) torsion outliers are listed below:

Mol	Chain	Res	Type	Atoms
2	C	500	BTN	S1-C2-C7-C8
2	C	500	BTN	C4-C2-C7-C8
2	D	600	BTN	S1-C2-C7-C8
2	D	600	BTN	C4-C2-C7-C8
2	C	500	BTN	C2-C7-C8-C9
2	D	600	BTN	C7-C8-C9-C10
2	D	600	BTN	C11-C10-C9-C8
2	D	600	BTN	C2-C7-C8-C9
2	C	500	BTN	C7-C8-C9-C10
2	D	600	BTN	C9-C10-C11-O12
2	C	500	BTN	C9-C10-C11-O11
2	D	600	BTN	C9-C10-C11-O11
2	C	500	BTN	C9-C10-C11-O12

There are no ring outliers.

2 monomers are involved in 2 short contacts:

Mol	Chain	Res	Type	Clashes	Symm-Clashes
2	C	500	BTN	1	0
2	D	600	BTN	1	0

5.7 Other polymers [i](#)

There are no such residues in this entry.

5.8 Polymer linkage issues [i](#)

There are no chain breaks in this entry.

6 Fit of model and data [i](#)

6.1 Protein, DNA and RNA chains [i](#)

In the following table, the column labelled ‘#RSRZ > 2’ contains the number (and percentage) of RSRZ outliers, followed by percent RSRZ outliers for the chain as percentile scores relative to all X-ray entries and entries of similar resolution. The OWAB column contains the minimum, median, 95th percentile and maximum values of the occupancy-weighted average B-factor per residue. The column labelled ‘Q < 0.9’ lists the number of (and percentage) of residues with an average occupancy less than 0.9.

Mol	Chain	Analysed	<RSRZ>	#RSRZ>2	OWAB(Å ²)	Q<0.9
1	A	120/127 (94%)	-0.28	3 (2%) 57 55	15, 26, 48, 60	0
1	B	114/127 (89%)	-0.24	5 (4%) 34 32	15, 27, 48, 61	0
1	C	118/127 (92%)	-0.26	1 (0%) 86 85	14, 25, 49, 57	8 (6%)
1	D	118/127 (92%)	-0.26	5 (4%) 36 34	18, 26, 48, 67	0
All	All	470/508 (92%)	-0.26	14 (2%) 50 48	14, 26, 49, 67	8 (1%)

All (14) RSRZ outliers are listed below:

Mol	Chain	Res	Type	RSRZ
1	D	100	ALA	4.5
1	B	102	ALA	3.5
1	B	36	ASP	3.0
1	B	44	GLU	2.9
1	B	101	GLU	2.8
1	A	66	THR	2.5
1	D	103	ARG	2.4
1	D	36	ASP	2.4
1	D	83	TYR	2.3
1	A	135	PRO	2.2
1	A	101	GLU	2.1
1	B	24	GLN	2.1
1	D	101	GLU	2.0
1	C	100	ALA	2.0

6.2 Non-standard residues in protein, DNA, RNA chains [i](#)

There are no non-standard protein/DNA/RNA residues in this entry.

6.3 Carbohydrates [i](#)

There are no monosaccharides in this entry.

6.4 Ligands [i](#)

In the following table, the Atoms column lists the number of modelled atoms in the group and the number defined in the chemical component dictionary. The B-factors column lists the minimum, median, 95th percentile and maximum values of B factors of atoms in the group. The column labelled 'Q< 0.9' lists the number of atoms with occupancy less than 0.9.

Mol	Type	Chain	Res	Atoms	RSCC	RSR	B-factors(Å ²)	Q<0.9
2	BTN	C	500	16/16	0.89	0.20	8,22,25,26	16
2	BTN	D	600	16/16	0.94	0.10	20,24,28,29	0
2	BTN	A	300	16/16	0.97	0.08	21,22,24,30	0

6.5 Other polymers [i](#)

There are no such residues in this entry.