



Full wwPDB X-ray Structure Validation Report ⓘ

May 29, 2024 – 03:13 PM EDT

PDB ID : 1RTH
Title : HIGH RESOLUTION STRUCTURES OF HIV-1 RT FROM FOUR RT-INHIBITOR COMPLEXES
Authors : Ren, J.; Esnouf, R.; Garman, E.; Somers, D.; Ross, C.; Kirby, I.; Keeling, J.; Darby, G.; Jones, Y.; Stuart, D.; Stammers, D.
Deposited on : 1995-05-03
Resolution : 2.20 Å(reported)

This is a Full wwPDB X-ray Structure Validation Report for a publicly released PDB entry.

We welcome your comments at validation@mail.wwpdb.org

A user guide is available at

<https://www.wwpdb.org/validation/2017/XrayValidationReportHelp>

with specific help available everywhere you see the ⓘ symbol.

The types of validation reports are described at

<http://www.wwpdb.org/validation/2017/FAQs#types>.

The following versions of software and data (see [references ⓘ](#)) were used in the production of this report:

MolProbity : 4.02b-467
Mogul : 1.8.5 (274361), CSD as541be (2020)
Xtrriage (Phenix) : **NOT EXECUTED**
EDS : **NOT EXECUTED**
buster-report : 1.1.7 (2018)
Percentile statistics : 20191225.v01 (using entries in the PDB archive December 25th 2019)
Ideal geometry (proteins) : Engh & Huber (2001)
Ideal geometry (DNA, RNA) : Parkinson et al. (1996)
Validation Pipeline (wwPDB-VP) : 2.36.2

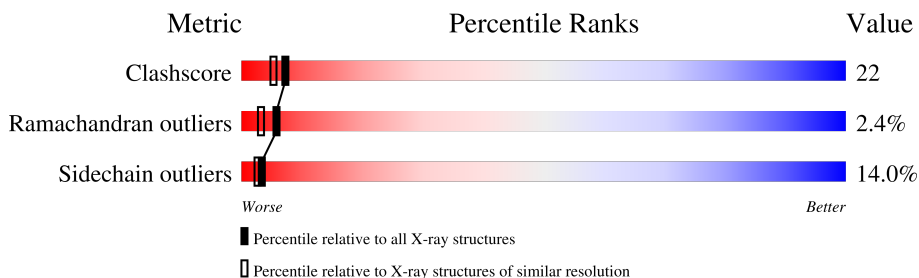
1 Overall quality at a glance

The following experimental techniques were used to determine the structure:

X-RAY DIFFRACTION

The reported resolution of this entry is 2.20 Å.

Percentile scores (ranging between 0-100) for global validation metrics of the entry are shown in the following graphic. The table shows the number of entries on which the scores are based.



Metric	Whole archive (#Entries)	Similar resolution (#Entries, resolution range(Å))
Clashscore	141614	5594 (2.20-2.20)
Ramachandran outliers	138981	5503 (2.20-2.20)
Sidechain outliers	138945	5504 (2.20-2.20)

The table below summarises the geometric issues observed across the polymeric chains and their fit to the electron density. The red, orange, yellow and green segments of the lower bar indicate the fraction of residues that contain outliers for ≥ 3 , 2, 1 and 0 types of geometric quality criteria respectively. A grey segment represents the fraction of residues that are not modelled. The numeric value for each fraction is indicated below the corresponding segment, with a dot representing fractions $\leq 5\%$.

Note EDS was not executed.

Mol	Chain	Length	Quality of chain
1	A	560	 54% 35% 7% ..
2	B	440	 45% 41% 9% 5%

2 Entry composition [i](#)

There are 4 unique types of molecules in this entry. The entry contains 8146 atoms, of which 0 are hydrogens and 0 are deuteriums.

In the tables below, the ZeroOcc column contains the number of atoms modelled with zero occupancy, the AltConf column contains the number of residues with at least one atom in alternate conformation and the Trace column contains the number of residues modelled with at most 2 atoms.

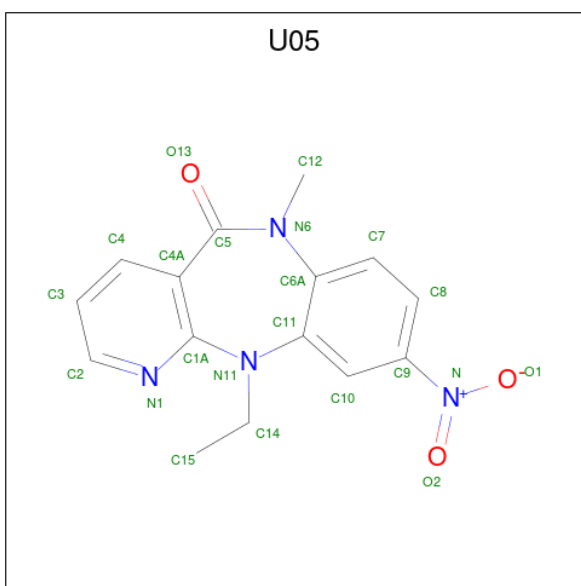
- Molecule 1 is a protein called HIV-1 REVERSE TRANSCRIPTASE.

Mol	Chain	Residues	Atoms					ZeroOcc	AltConf	Trace
			Total	C	N	O	S			
1	A	543	4435	2869	739	819	8	0	0	0

- Molecule 2 is a protein called HIV-1 REVERSE TRANSCRIPTASE.

Mol	Chain	Residues	Atoms					ZeroOcc	AltConf	Trace
			Total	C	N	O	S			
2	B	420	3452	2242	573	630	7	0	0	0

- Molecule 3 is 6,11-DIHYDRO-11-ETHYL-6-METHYL-9-NITRO-5H-PYRIDO[2,3-B][1,5]BENZODIAZEPIN-5-ONE (three-letter code: U05) (formula: C₁₅H₁₄N₄O₃).



Mol	Chain	Residues	Atoms				ZeroOcc	AltConf
			Total	C	N	O		
3	A	1	22	15	4	3	0	0

- Molecule 4 is water.

Mol	Chain	Residues	Atoms		ZeroOcc	AltConf
4	A	139	Total 139	O 139	0	0
4	B	98	Total 98	O 98	0	0

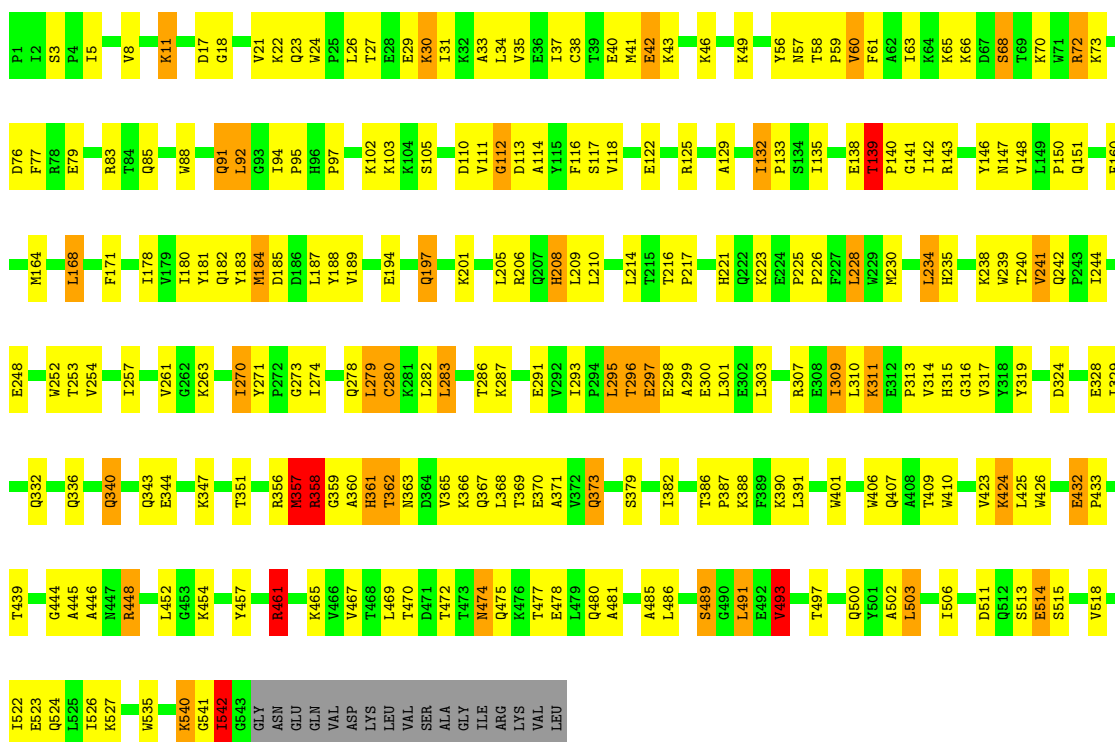
3 Residue-property plots

These plots are drawn for all protein, RNA, DNA and oligosaccharide chains in the entry. The first graphic for a chain summarises the proportions of the various outlier classes displayed in the second graphic. The second graphic shows the sequence view annotated by issues in geometry. Residues are color-coded according to the number of geometric quality criteria for which they contain at least one outlier: green = 0, yellow = 1, orange = 2 and red = 3 or more. Stretches of 2 or more consecutive residues without any outlier are shown as a green connector. Residues present in the sample, but not in the model, are shown in grey.

Note EDS was not executed.

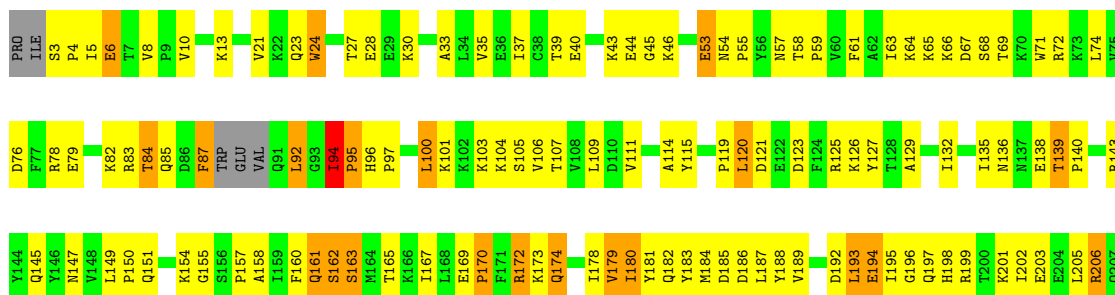
- Molecule 1: HIV-1 REVERSE TRANSCRIPTASE

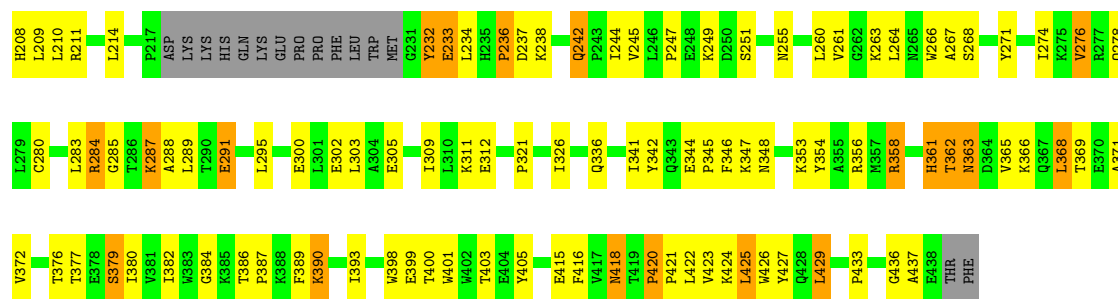
Chain A: 



- Molecule 2: HIV-1 REVERSE TRANSCRIPTASE

Chain B: 





4 Data and refinement statistics

Xtrriage (Phenix) and EDS were not executed - this section is therefore incomplete.

Property	Value	Source
Space group	P 21 21 21	Depositor
Cell constants a, b, c, α , β , γ	141.10Å 110.90Å 73.30Å 90.00° 90.00° 90.00°	Depositor
Resolution (Å)	25.00 – 2.20	Depositor
% Data completeness (in resolution range)	81.4 (25.00-2.20)	Depositor
R_{merge}	0.14	Depositor
R_{sym}	(Not available)	Depositor
Refinement program	X-PLOR 3.1	Depositor
R, R_{free}	0.214 , (Not available)	Depositor
Estimated twinning fraction	No twinning to report.	Xtrriage
Total number of atoms	8146	wwPDB-VP
Average B, all atoms (Å ²)	61.0	wwPDB-VP

5 Model quality [i](#)

5.1 Standard geometry [i](#)

Bond lengths and bond angles in the following residue types are not validated in this section: CSD, U05

The Z score for a bond length (or angle) is the number of standard deviations the observed value is removed from the expected value. A bond length (or angle) with $|Z| > 5$ is considered an outlier worth inspection. RMSZ is the root-mean-square of all Z scores of the bond lengths (or angles).

Mol	Chain	Bond lengths		Bond angles	
		RMSZ	# Z >5	RMSZ	# Z >5
1	A	0.79	0/4544	0.96	12/6175 (0.2%)
2	B	0.78	0/3547	0.95	2/4818 (0.0%)
All	All	0.79	0/8091	0.95	14/10993 (0.1%)

Chiral center outliers are detected by calculating the chiral volume of a chiral center and verifying if the center is modelled as a planar moiety or with the opposite hand. A planarity outlier is detected by checking planarity of atoms in a peptide group, atoms in a mainchain group or atoms of a sidechain that are expected to be planar.

Mol	Chain	#Chirality outliers	#Planarity outliers
1	A	0	1

There are no bond length outliers.

All (14) bond angle outliers are listed below:

Mol	Chain	Res	Type	Atoms	Z	Observed($^{\circ}$)	Ideal($^{\circ}$)
1	A	279	LEU	CA-CB-CG	7.41	132.34	115.30
1	A	493	VAL	CB-CA-C	-7.11	97.89	111.40
1	A	461	ARG	NE-CZ-NH1	6.63	123.61	120.30
1	A	511	ASP	CB-CG-OD1	6.01	123.71	118.30
1	A	141	GLY	N-CA-C	-5.90	98.36	113.10
2	B	238	LYS	N-CA-C	-5.68	95.67	111.00
2	B	437	ALA	N-CA-C	-5.49	96.18	111.00
1	A	489	SER	N-CA-C	5.28	125.26	111.00
1	A	273	GLY	N-CA-C	-5.16	100.20	113.10
1	A	388	LYS	N-CA-C	-5.14	97.11	111.00
1	A	503	LEU	CA-CB-CG	5.14	127.12	115.30
1	A	92	LEU	CA-CB-CG	5.12	127.07	115.30
1	A	132	ILE	N-CA-C	-5.11	97.21	111.00
1	A	139	THR	C-N-CD	5.10	139.10	128.40

There are no chirality outliers.

All (1) planarity outliers are listed below:

Mol	Chain	Res	Type	Group
1	A	271	TYR	Sidechain

5.2 Too-close contacts [i](#)

In the following table, the Non-H and H(model) columns list the number of non-hydrogen atoms and hydrogen atoms in the chain respectively. The H(added) column lists the number of hydrogen atoms added and optimized by MolProbity. The Clashes column lists the number of clashes within the asymmetric unit, whereas Symm-Clashes lists symmetry-related clashes.

Mol	Chain	Non-H	H(model)	H(added)	Clashes	Symm-Clashes
1	A	4435	0	4484	195	0
2	B	3452	0	3488	173	0
3	A	22	0	14	4	0
4	A	139	0	0	5	0
4	B	98	0	0	8	0
All	All	8146	0	7986	357	0

The all-atom clashscore is defined as the number of clashes found per 1000 atoms (including hydrogen atoms). The all-atom clashscore for this structure is 22.

All (357) close contacts within the same asymmetric unit are listed below, sorted by their clash magnitude.

Atom-1	Atom-2	Interatomic distance (Å)	Clash overlap (Å)
2:B:84:THR:HG22	2:B:154:LYS:HE2	1.37	1.05
1:A:59:PRO:HG2	1:A:76:ASP:HB3	1.39	1.00
1:A:410:TRP:CD1	2:B:363:ASN:HB2	2.01	0.95
1:A:228:LEU:HD11	1:A:242:GLN:NE2	1.82	0.94
1:A:270:ILE:HD11	1:A:314:VAL:HG21	1.47	0.94
2:B:79:GLU:O	2:B:83:ARG:HG3	1.69	0.93
1:A:239:TRP:CZ2	1:A:316:GLY:HA3	2.04	0.93
1:A:114:ALA:HA	1:A:117:SER:OG	1.69	0.92
1:A:171:PHE:HB2	1:A:208:HIS:HD2	1.34	0.91
1:A:257:ILE:O	1:A:261:VAL:HG23	1.71	0.91
1:A:358:ARG:NH1	1:A:358:ARG:HB3	1.89	0.88
2:B:368:LEU:O	2:B:372:VAL:HG23	1.74	0.88
1:A:278:GLN:HG2	1:A:298:GLU:HB3	1.55	0.86
1:A:171:PHE:HB2	1:A:208:HIS:CD2	2.09	0.86
1:A:216:THR:HG23	1:A:217:PRO:HD2	1.59	0.84

Continued on next page...

Continued from previous page...

Atom-1	Atom-2	Interatomic distance (Å)	Clash overlap (Å)
1:A:228:LEU:HD11	1:A:242:GLN:HE22	1.43	0.81
2:B:195:ILE:HG13	2:B:199:ARG:HG3	1.64	0.78
2:B:426:TRP:O	2:B:429:LEU:HB2	1.84	0.78
1:A:27:THR:HB	1:A:30:LYS:HG3	1.65	0.77
2:B:197:GLN:O	2:B:201:LYS:HB2	1.86	0.76
2:B:5:ILE:HG22	2:B:6:GLU:H	1.48	0.76
1:A:79:GLU:HG3	1:A:83:ARG:NH1	2.01	0.76
2:B:139:THR:HG22	2:B:140:PRO:HD2	1.66	0.75
2:B:203:GLU:HA	2:B:206:ARG:HD2	1.68	0.75
2:B:180:ILE:HD11	2:B:189:VAL:HG13	1.69	0.75
2:B:369:THR:HG22	2:B:398:TRP:CH2	2.23	0.74
1:A:23:GLN:HE22	1:A:60:VAL:H	1.36	0.73
1:A:332:GLN:NE2	1:A:332:GLN:HA	2.03	0.72
1:A:541:GLY:HA3	2:B:284:ARG:CZ	2.20	0.72
2:B:247:PRO:HB2	2:B:249:LYS:HZ1	1.54	0.72
2:B:100:LEU:HD23	2:B:100:LEU:H	1.54	0.72
1:A:83:ARG:HG3	1:A:83:ARG:HH11	1.55	0.71
1:A:244:ILE:HG23	1:A:310:LEU:HD13	1.73	0.71
2:B:84:THR:CG2	2:B:154:LYS:HE2	2.21	0.69
2:B:365:VAL:O	2:B:369:THR:HG23	1.92	0.69
2:B:295:LEU:HB3	2:B:300:GLU:HG2	1.74	0.69
1:A:17:ASP:O	1:A:83:ARG:HD3	1.92	0.69
2:B:180:ILE:CD1	2:B:189:VAL:HG13	2.23	0.69
3:A:999:U05:O1	2:B:138:GLU:HG2	1.94	0.68
1:A:502:ALA:O	1:A:506:ILE:HD12	1.94	0.68
1:A:358:ARG:HB3	1:A:358:ARG:CZ	2.22	0.67
1:A:241:VAL:HG23	1:A:314:VAL:O	1.95	0.66
1:A:226:PRO:HB3	1:A:235:HIS:CD2	2.31	0.66
1:A:329:ILE:HD12	1:A:391:LEU:CD2	2.25	0.66
1:A:129:ALA:HB1	1:A:143:ARG:NH2	2.11	0.66
2:B:57:ASN:HD22	2:B:143:ARG:NH1	1.94	0.66
1:A:139:THR:HB	1:A:140:PRO:HD3	1.78	0.65
2:B:158:ALA:O	2:B:161:GLN:HB2	1.95	0.65
1:A:72:ARG:HG2	1:A:73:LYS:N	2.11	0.65
1:A:332:GLN:HA	1:A:332:GLN:HE21	1.62	0.65
1:A:40:GLU:O	1:A:43:LYS:HG2	1.97	0.64
1:A:37:ILE:O	1:A:40:GLU:HB3	1.97	0.64
1:A:188:TYR:CD2	3:A:999:U05:H122	2.32	0.64
1:A:125:ARG:HD3	1:A:147:ASN:HA	1.78	0.64
2:B:65:LYS:O	2:B:68:SER:HB3	1.98	0.64
2:B:390:LYS:HE2	2:B:415:GLU:OE2	1.97	0.64

Continued on next page...

Continued from previous page...

Atom-1	Atom-2	Interatomic distance (Å)	Clash overlap (Å)
2:B:33:ALA:O	2:B:37:ILE:HG13	1.97	0.63
1:A:497:THR:O	1:A:535:TRP:HA	1.99	0.63
2:B:420:PRO:HB2	2:B:423:VAL:HG13	1.81	0.63
2:B:247:PRO:HB2	2:B:249:LYS:NZ	2.13	0.62
2:B:5:ILE:HG22	2:B:6:GLU:N	2.15	0.62
1:A:79:GLU:HG3	1:A:83:ARG:HH12	1.64	0.62
1:A:117:SER:CB	1:A:214:LEU:HD23	2.30	0.61
2:B:103:LYS:HE3	2:B:192:ASP:OD2	2.00	0.61
2:B:54:ASN:HD21	2:B:129:ALA:HB2	1.66	0.61
2:B:125:ARG:HE	2:B:147:ASN:HA	1.66	0.61
2:B:132:ILE:HD12	2:B:132:ILE:N	2.16	0.60
1:A:340:GLN:HB3	1:A:351:THR:HG22	1.84	0.60
2:B:105:SER:HA	2:B:234:LEU:O	2.02	0.60
2:B:125:ARG:NE	2:B:147:ASN:HA	2.17	0.60
1:A:358:ARG:HB3	1:A:358:ARG:HH11	1.67	0.60
1:A:489:SER:HB2	1:A:493:VAL:HG13	1.84	0.59
2:B:157:PRO:HG2	2:B:184:MET:HA	1.84	0.59
1:A:27:THR:HG22	1:A:29:GLU:H	1.68	0.59
1:A:164:MET:HG3	1:A:168:LEU:HD22	1.84	0.59
2:B:163:SER:O	2:B:167:ILE:HG13	2.03	0.59
2:B:183:TYR:HB3	2:B:188:TYR:HE2	1.67	0.58
2:B:251:SER:HA	4:B:1192:HOH:O	2.03	0.58
2:B:421:PRO:O	2:B:425:LEU:HD22	2.03	0.58
1:A:33:ALA:O	1:A:37:ILE:HD13	2.03	0.58
2:B:3:SER:N	2:B:4:PRO:HD3	2.18	0.58
2:B:169:GLU:HB3	2:B:170:PRO:HD3	1.86	0.57
2:B:84:THR:HG22	2:B:154:LYS:CE	2.24	0.57
1:A:300:GLU:OE1	1:A:300:GLU:HA	2.04	0.57
2:B:422:LEU:HB2	4:B:1208:HOH:O	2.05	0.57
1:A:114:ALA:O	1:A:117:SER:HB2	2.04	0.56
2:B:126:LYS:HG3	2:B:127:TYR:N	2.19	0.56
1:A:541:GLY:HA3	2:B:284:ARG:NE	2.20	0.56
2:B:379:SER:CB	2:B:387:PRO:HD3	2.36	0.56
2:B:400:THR:HG22	2:B:401:TRP:CD2	2.41	0.56
2:B:114:ALA:HB2	2:B:214:LEU:HD13	1.88	0.56
1:A:139:THR:HB	1:A:140:PRO:CD	2.35	0.56
1:A:234:LEU:HD12	1:A:239:TRP:HB3	1.88	0.56
1:A:122:GLU:H	1:A:122:GLU:CD	2.08	0.56
1:A:541:GLY:HA3	2:B:284:ARG:NH2	2.21	0.56
2:B:363:ASN:ND2	2:B:366:LYS:HB2	2.21	0.56
1:A:91:GLN:NE2	1:A:183:TYR:HE1	2.04	0.56

Continued on next page...

Continued from previous page...

Atom-1	Atom-2	Interatomic distance (Å)	Clash overlap (Å)
1:A:118:VAL:O	1:A:148:VAL:HG23	2.05	0.55
1:A:216:THR:HG23	1:A:217:PRO:CD	2.35	0.55
1:A:197:GLN:HE21	1:A:197:GLN:HA	1.70	0.55
2:B:266:TRP:HZ3	2:B:426:TRP:CG	2.24	0.55
2:B:206:ARG:C	2:B:210:LEU:HD13	2.26	0.55
1:A:216:THR:CG2	1:A:217:PRO:HD2	2.35	0.55
2:B:101:LYS:NZ	2:B:101:LYS:HB3	2.22	0.55
2:B:311:LYS:O	2:B:312:GLU:HG3	2.06	0.54
1:A:282:LEU:HB3	1:A:293:ILE:HG21	1.88	0.54
1:A:58:THR:HG23	1:A:59:PRO:HD2	1.90	0.54
1:A:34:LEU:HD21	1:A:73:LYS:HB2	1.90	0.54
1:A:142:ILE:N	1:A:142:ILE:HD12	2.23	0.54
1:A:11:LYS:NZ	1:A:11:LYS:HB3	2.23	0.54
1:A:56:TYR:O	1:A:57:ASN:HB2	2.08	0.53
1:A:485:ALA:O	1:A:489:SER:HB3	2.08	0.53
1:A:461:ARG:HG3	1:A:461:ARG:HH11	1.73	0.53
1:A:328:GLU:HG3	1:A:390:LYS:HB2	1.90	0.53
1:A:486:LEU:HB3	1:A:524:GLN:CG	2.39	0.53
2:B:57:ASN:HD22	2:B:143:ARG:HH12	1.56	0.53
1:A:164:MET:HG3	1:A:168:LEU:CD2	2.38	0.53
2:B:181:TYR:O	2:B:187:LEU:HA	2.09	0.53
2:B:195:ILE:HG12	2:B:199:ARG:CZ	2.39	0.53
2:B:28:GLU:HG3	2:B:135:ILE:CD1	2.39	0.53
2:B:280:CYS:HB3	2:B:284:ARG:NH2	2.24	0.53
1:A:448:ARG:HG2	1:A:448:ARG:HH11	1.73	0.53
2:B:344:GLU:HB3	2:B:347:LYS:HE3	1.90	0.52
2:B:369:THR:HG22	2:B:398:TRP:CZ3	2.44	0.52
1:A:226:PRO:HB3	1:A:235:HIS:HD2	1.72	0.52
1:A:444:GLY:HA3	1:A:477:THR:HG22	1.90	0.52
1:A:486:LEU:HB3	1:A:524:GLN:HG3	1.91	0.52
2:B:341:ILE:N	2:B:341:ILE:HD12	2.24	0.52
1:A:540:LYS:HG2	2:B:280:CYS:SG	2.50	0.52
1:A:129:ALA:HB1	1:A:143:ARG:HH21	1.75	0.52
2:B:280:CYS:HB3	2:B:284:ARG:HH21	1.75	0.52
2:B:387:PRO:HG2	2:B:389:PHE:CE1	2.44	0.52
2:B:206:ARG:O	2:B:210:LEU:HD13	2.09	0.52
2:B:54:ASN:ND2	2:B:129:ALA:HB2	2.24	0.52
1:A:160:PHE:HE2	1:A:182:GLN:NE2	2.08	0.52
1:A:168:LEU:HD11	1:A:209:LEU:HD21	1.91	0.52
1:A:424:LYS:HE3	1:A:426:TRP:CE3	2.45	0.52
1:A:235:HIS:HE1	4:A:1047:HOH:O	1.91	0.51

Continued on next page...

Continued from previous page...

Atom-1	Atom-2	Interatomic distance (Å)	Clash overlap (Å)
2:B:100:LEU:H	2:B:100:LEU:CD2	2.22	0.51
2:B:92:LEU:HB3	2:B:161:GLN:OE1	2.10	0.51
1:A:184:MET:HA	1:A:184:MET:CE	2.40	0.51
1:A:324:ASP:O	1:A:343:GLN:HG2	2.10	0.51
2:B:92:LEU:HD22	2:B:165:THR:HG21	1.92	0.51
2:B:114:ALA:HB1	2:B:160:PHE:CZ	2.45	0.51
2:B:194:GLU:OE1	2:B:195:ILE:HG22	2.10	0.51
1:A:206:ARG:O	1:A:210:LEU:HB2	2.11	0.51
1:A:340:GLN:CB	1:A:351:THR:HG22	2.41	0.51
1:A:523:GLU:O	1:A:527:LYS:HG2	2.10	0.51
2:B:74:LEU:HD11	4:B:1209:HOH:O	2.11	0.51
2:B:160:PHE:O	2:B:160:PHE:CD2	2.64	0.51
2:B:205:LEU:O	2:B:208:HIS:HB3	2.11	0.51
1:A:356:ARG:HH22	1:A:371:ALA:HB2	1.76	0.51
1:A:270:ILE:HD12	1:A:270:ILE:O	2.10	0.51
1:A:239:TRP:CE2	1:A:316:GLY:HA3	2.44	0.50
1:A:77:PHE:CE2	1:A:150:PRO:HB2	2.45	0.50
2:B:13:LYS:HE2	2:B:82:LYS:O	2.10	0.50
2:B:35:VAL:O	2:B:39:THR:HG23	2.11	0.50
1:A:164:MET:O	1:A:168:LEU:HD22	2.11	0.50
1:A:168:LEU:CD1	1:A:209:LEU:HD21	2.42	0.50
1:A:356:ARG:NH1	1:A:367:GLN:O	2.45	0.50
2:B:198:HIS:HD2	2:B:233:GLU:OE1	1.95	0.50
1:A:235:HIS:HB2	1:A:238:LYS:O	2.11	0.50
1:A:252:TRP:CD1	1:A:295:LEU:CD1	2.95	0.50
2:B:161:GLN:HA	2:B:161:GLN:NE2	2.26	0.50
1:A:373:GLN:HG2	4:B:1230:HOH:O	2.12	0.50
2:B:78:ARG:O	2:B:82:LYS:HG3	2.11	0.50
1:A:297:GLU:O	1:A:301:LEU:HD23	2.12	0.49
1:A:324:ASP:HA	4:A:1087:HOH:O	2.11	0.49
2:B:40:GLU:O	2:B:43:LYS:HB2	2.12	0.49
2:B:87:PHE:CD1	2:B:87:PHE:N	2.80	0.49
2:B:285:GLY:O	2:B:287:LYS:HG2	2.13	0.49
2:B:366:LYS:HG2	2:B:405:TYR:CD2	2.46	0.49
2:B:58:THR:HG23	2:B:76:ASP:O	2.12	0.49
2:B:107:THR:O	2:B:189:VAL:N	2.38	0.49
2:B:244:ILE:HG23	2:B:429:LEU:HB3	1.95	0.49
2:B:266:TRP:CZ3	2:B:426:TRP:CG	3.00	0.49
1:A:197:GLN:HG3	4:A:1065:HOH:O	2.12	0.49
1:A:114:ALA:HB1	1:A:214:LEU:HD22	1.94	0.49
1:A:432:GLU:HB2	1:A:433:PRO:HD2	1.94	0.49

Continued on next page...

Continued from previous page...

Atom-1	Atom-2	Interatomic distance (Å)	Clash overlap (Å)
1:A:489:SER:HB2	1:A:493:VAL:CG1	2.42	0.49
2:B:24:TRP:CH2	2:B:61:PHE:CD1	3.00	0.49
2:B:169:GLU:O	2:B:172:ARG:HB2	2.12	0.49
2:B:288:ALA:O	2:B:291:GLU:HB3	2.12	0.49
2:B:361:HIS:HD2	2:B:362:THR:CG2	2.26	0.49
2:B:85:GLN:O	2:B:85:GLN:HG3	2.12	0.49
1:A:117:SER:HB3	1:A:214:LEU:HD23	1.95	0.49
1:A:445:ALA:N	1:A:477:THR:HG21	2.28	0.48
1:A:448:ARG:HG2	4:A:1127:HOH:O	2.13	0.48
2:B:101:LYS:HE2	2:B:382:ILE:HG23	1.94	0.48
2:B:155:GLY:O	2:B:158:ALA:HB3	2.12	0.48
2:B:206:ARG:O	2:B:209:LEU:N	2.46	0.48
1:A:253:THR:O	1:A:257:ILE:HG12	2.14	0.48
1:A:295:LEU:HD23	1:A:299:ALA:HB3	1.95	0.48
1:A:329:ILE:HD12	1:A:391:LEU:HD21	1.92	0.48
1:A:68:SER:C	1:A:70:LYS:H	2.17	0.48
1:A:439:THR:HG21	2:B:289:LEU:HD13	1.96	0.48
1:A:116:PHE:HE1	1:A:151:GLN:HB2	1.77	0.48
2:B:255:ASN:ND2	4:B:1199:HOH:O	2.46	0.48
1:A:500:GLN:OE1	1:A:500:GLN:HA	2.13	0.48
1:A:125:ARG:NH1	1:A:147:ASN:HB3	2.28	0.47
2:B:261:VAL:HG22	2:B:276:VAL:HG22	1.95	0.47
2:B:268:SER:HA	2:B:271:TYR:O	2.14	0.47
2:B:336:GLN:OE1	2:B:336:GLN:N	2.46	0.47
2:B:28:GLU:HG3	2:B:135:ILE:HD11	1.95	0.47
1:A:344:GLU:O	1:A:347:LYS:HB2	2.14	0.47
2:B:24:TRP:CZ3	2:B:403:THR:HG21	2.50	0.47
2:B:267:ALA:HB2	2:B:426:TRP:CZ3	2.49	0.47
1:A:66:LYS:HD2	1:A:66:LYS:HA	1.67	0.47
1:A:357:MET:O	1:A:359:GLY:N	2.48	0.47
1:A:319:TYR:CE1	1:A:343:GLN:NE2	2.82	0.47
2:B:65:LYS:NZ	2:B:72:ARG:HD3	2.30	0.47
2:B:72:ARG:HG3	2:B:72:ARG:HH11	1.79	0.47
2:B:271:TYR:HB2	2:B:274:ILE:CD1	2.44	0.47
2:B:120:LEU:HD12	2:B:150:PRO:HD3	1.97	0.47
1:A:235:HIS:ND1	1:A:238:LYS:HE3	2.30	0.47
1:A:324:ASP:O	1:A:343:GLN:CG	2.63	0.47
2:B:326:ILE:O	2:B:341:ILE:HA	2.15	0.47
1:A:22:LYS:HG2	1:A:23:GLN:N	2.30	0.46
1:A:102:LYS:HG2	4:A:1053:HOH:O	2.16	0.46
1:A:248:GLU:HA	1:A:307:ARG:NH2	2.30	0.46

Continued on next page...

Continued from previous page...

Atom-1	Atom-2	Interatomic distance (Å)	Clash overlap (Å)
1:A:347:LYS:HA	1:A:347:LYS:HD3	1.54	0.46
1:A:110:ASP:C	1:A:112:GLY:H	2.19	0.46
1:A:540:LYS:HB3	1:A:542:ILE:CD1	2.44	0.46
2:B:182:GLN:HB2	2:B:187:LEU:CD1	2.46	0.46
1:A:295:LEU:HD23	1:A:299:ALA:CB	2.45	0.46
2:B:169:GLU:HG2	2:B:173:LYS:HE2	1.97	0.46
1:A:8:VAL:HG13	2:B:53:GLU:OE1	2.16	0.46
1:A:38:CYS:O	1:A:42:GLU:HB3	2.16	0.46
1:A:446:ALA:O	1:A:448:ARG:NH1	2.49	0.46
2:B:169:GLU:HA	2:B:172:ARG:HB2	1.97	0.46
3:A:999:U05:N1	3:A:999:U05:H153	2.30	0.46
2:B:96:HIS:CD2	2:B:97:PRO:O	2.69	0.46
2:B:393:ILE:O	2:B:416:PHE:HB3	2.16	0.46
1:A:307:ARG:O	1:A:311:LYS:HE2	2.15	0.46
1:A:474:ASN:O	1:A:478:GLU:HG3	2.16	0.46
2:B:72:ARG:NH2	2:B:151:GLN:NE2	2.63	0.46
2:B:358:ARG:H	2:B:358:ARG:CD	2.29	0.46
2:B:376:THR:CG2	2:B:386:THR:HG22	2.46	0.46
1:A:180:ILE:HG12	1:A:189:VAL:HG13	1.98	0.45
1:A:424:LYS:HE3	1:A:426:TRP:CZ3	2.51	0.45
1:A:41:MET:HB3	1:A:46:LYS:NZ	2.32	0.45
2:B:111:VAL:HG23	2:B:111:VAL:O	2.17	0.45
2:B:361:HIS:HD2	2:B:362:THR:HG22	1.81	0.45
1:A:278:GLN:HG2	1:A:298:GLU:CB	2.35	0.45
1:A:116:PHE:CE2	1:A:146:TYR:HE2	2.34	0.45
1:A:280:CSD:O	1:A:283:LEU:HB2	2.17	0.45
2:B:66:LYS:O	2:B:67:ASP:HB2	2.16	0.45
1:A:34:LEU:HD21	1:A:73:LYS:CB	2.47	0.45
1:A:296:THR:O	1:A:299:ALA:HB3	2.17	0.45
1:A:461:ARG:HH11	1:A:461:ARG:CG	2.30	0.45
1:A:448:ARG:HG2	1:A:448:ARG:NH1	2.31	0.45
2:B:353:LYS:HG2	4:B:1205:HOH:O	2.16	0.45
1:A:187:LEU:HD12	1:A:187:LEU:HA	1.80	0.45
2:B:202:ILE:O	2:B:205:LEU:HB3	2.16	0.45
1:A:491:LEU:HD12	1:A:491:LEU:HA	1.72	0.45
1:A:357:MET:O	1:A:357:MET:HG2	2.17	0.44
1:A:24:TRP:CD1	1:A:61:PHE:HE1	2.35	0.44
2:B:8:VAL:O	2:B:8:VAL:HG22	2.17	0.44
1:A:91:GLN:HE22	1:A:183:TYR:HE1	1.63	0.44
1:A:328:GLU:HB3	1:A:340:GLN:OE1	2.17	0.44
1:A:454:LYS:HA	1:A:467:VAL:O	2.18	0.44

Continued on next page...

Continued from previous page...

Atom-1	Atom-2	Interatomic distance (Å)	Clash overlap (Å)
1:A:522:ILE:O	1:A:526:ILE:HG13	2.17	0.44
2:B:43:LYS:C	2:B:45:GLY:H	2.21	0.44
1:A:234:LEU:HD12	1:A:239:TRP:CB	2.47	0.44
1:A:540:LYS:HB3	1:A:542:ILE:HD11	1.99	0.44
1:A:22:LYS:HG2	1:A:23:GLN:H	1.82	0.44
1:A:118:VAL:O	1:A:148:VAL:CG2	2.65	0.44
1:A:283:LEU:O	1:A:286:THR:HG23	2.17	0.44
2:B:377:THR:O	2:B:380:ILE:HB	2.18	0.44
1:A:228:LEU:HD22	1:A:228:LEU:HA	1.88	0.44
2:B:126:LYS:HG3	2:B:127:TYR:H	1.82	0.44
2:B:433:PRO:CG	2:B:436:GLY:HA2	2.48	0.44
1:A:366:LYS:O	1:A:370:GLU:HG3	2.18	0.44
1:A:514:GLU:H	1:A:514:GLU:HG3	1.60	0.44
2:B:354:TYR:CE2	2:B:371:ALA:HB2	2.53	0.44
1:A:382:ILE:O	2:B:136:ASN:HB2	2.18	0.43
2:B:23:GLN:OE1	2:B:59:PRO:HA	2.17	0.43
1:A:31:ILE:O	1:A:35:VAL:HG23	2.18	0.43
2:B:201:LYS:HE3	4:B:1175:HOH:O	2.19	0.43
1:A:287:LYS:HG2	1:A:291:GLU:OE1	2.18	0.43
1:A:410:TRP:HZ3	2:B:401:TRP:CE2	2.36	0.43
2:B:66:LYS:HG3	2:B:67:ASP:OD1	2.18	0.43
2:B:170:PRO:O	2:B:174:GLN:HG2	2.18	0.43
2:B:178:ILE:HG22	2:B:179:VAL:N	2.33	0.43
2:B:271:TYR:HB2	2:B:274:ILE:HD11	2.00	0.43
1:A:72:ARG:CG	1:A:73:LYS:N	2.78	0.43
2:B:195:ILE:HG23	2:B:196:GLY:N	2.32	0.43
1:A:26:LEU:HD22	1:A:30:LYS:HE2	2.00	0.43
2:B:205:LEU:HD13	2:B:205:LEU:C	2.39	0.43
1:A:469:LEU:HB2	1:A:472:THR:HG21	2.00	0.43
2:B:380:ILE:O	2:B:384:GLY:N	2.49	0.43
1:A:27:THR:HB	1:A:30:LYS:CG	2.42	0.43
1:A:181:TYR:CE2	1:A:183:TYR:HB2	2.53	0.43
1:A:252:TRP:CD1	1:A:295:LEU:HD12	2.54	0.43
1:A:365:VAL:O	1:A:366:LYS:C	2.57	0.43
1:A:425:LEU:HD23	1:A:425:LEU:HA	1.87	0.43
2:B:5:ILE:CG2	2:B:6:GLU:H	2.26	0.43
2:B:65:LYS:HZ1	2:B:72:ARG:HE	1.65	0.43
2:B:115:TYR:N	2:B:115:TYR:CD1	2.81	0.43
2:B:242:GLN:HA	2:B:242:GLN:HE21	1.83	0.43
1:A:356:ARG:HB2	1:A:367:GLN:NE2	2.34	0.43
1:A:406:TRP:CH2	2:B:418:ASN:HA	2.54	0.43

Continued on next page...

Continued from previous page...

Atom-1	Atom-2	Interatomic distance (Å)	Clash overlap (Å)
2:B:104:LYS:HB2	2:B:192:ASP:HA	2.00	0.43
1:A:83:ARG:NH1	1:A:83:ARG:HG3	2.30	0.42
1:A:362:THR:HG22	1:A:363:ASN:H	1.83	0.42
2:B:5:ILE:H	2:B:119:PRO:HG3	1.84	0.42
1:A:254:VAL:HG13	1:A:283:LEU:HD12	2.01	0.42
1:A:94:ILE:HG22	1:A:95:PRO:O	2.19	0.42
1:A:223:LYS:HB2	1:A:223:LYS:HE3	1.85	0.42
2:B:21:VAL:HB	2:B:59:PRO:HD3	2.00	0.42
1:A:34:LEU:HB3	1:A:132:ILE:HD12	2.01	0.42
2:B:92:LEU:CD2	2:B:165:THR:HG21	2.49	0.42
2:B:149:LEU:HA	2:B:150:PRO:HD3	1.90	0.42
2:B:27:THR:OG1	2:B:30:LYS:HG2	2.20	0.42
2:B:157:PRO:CG	2:B:184:MET:HA	2.49	0.42
2:B:195:ILE:CG2	2:B:196:GLY:N	2.82	0.42
1:A:239:TRP:CH2	1:A:316:GLY:HA3	2.53	0.42
1:A:95:PRO:HB3	2:B:136:ASN:ND2	2.35	0.42
1:A:410:TRP:NE1	2:B:363:ASN:HB2	2.33	0.42
2:B:64:LYS:HD2	2:B:71:TRP:CE2	2.55	0.42
2:B:120:LEU:HD23	2:B:121:ASP:O	2.20	0.42
2:B:278:GLN:HB2	2:B:302:GLU:OE1	2.20	0.42
1:A:407:GLN:HG2	2:B:393:ILE:HA	2.01	0.42
1:A:361:HIS:ND1	1:A:361:HIS:N	2.68	0.41
2:B:423:VAL:O	2:B:427:TYR:HD2	2.02	0.41
2:B:311:LYS:HE2	4:B:1194:HOH:O	2.20	0.41
1:A:274:ILE:HG12	1:A:309:ILE:HG21	2.02	0.41
1:A:478:GLU:O	1:A:481:ALA:HB3	2.20	0.41
2:B:193:LEU:CD1	2:B:193:LEU:H	2.34	0.41
1:A:184:MET:HB3	1:A:185:ASP:H	1.61	0.41
1:A:178:ILE:HD11	1:A:201:LYS:HG3	2.03	0.41
1:A:457:TYR:CE2	1:A:465:LYS:HB3	2.55	0.41
2:B:107:THR:HG23	2:B:232:TYR:HE1	1.85	0.41
1:A:42:GLU:OE1	1:A:49:LYS:HE3	2.20	0.41
1:A:58:THR:HG23	1:A:76:ASP:O	2.20	0.41
1:A:142:ILE:N	1:A:142:ILE:CD1	2.84	0.41
2:B:5:ILE:CG2	2:B:6:GLU:N	2.84	0.41
2:B:94:ILE:HD12	2:B:94:ILE:HA	1.93	0.41
2:B:305:GLU:O	2:B:309:ILE:HG13	2.20	0.41
1:A:11:LYS:O	1:A:85:GLN:HB3	2.20	0.41
1:A:116:PHE:CE1	1:A:151:GLN:HB2	2.56	0.41
3:A:999:U05:N1	3:A:999:U05:C15	2.84	0.41
2:B:356:ARG:CZ	2:B:361:HIS:HB3	2.51	0.41

Continued on next page...

Continued from previous page...

Atom-1	Atom-2	Interatomic distance (Å)	Clash overlap (Å)
1:A:37:ILE:N	1:A:37:ILE:HD12	2.36	0.41
1:A:103:LYS:HA	1:A:103:LYS:HD3	1.70	0.41
1:A:444:GLY:CA	1:A:477:THR:HG22	2.50	0.41
1:A:515:SER:HB3	1:A:518:VAL:HG23	2.03	0.41
2:B:356:ARG:NH2	2:B:361:HIS:HB3	2.36	0.41
1:A:401:TRP:CZ3	1:A:409:THR:HG21	2.56	0.40
2:B:345:PRO:O	2:B:346:PHE:HB2	2.20	0.40
2:B:106:VAL:HG12	2:B:107:THR:N	2.36	0.40
1:A:116:PHE:O	1:A:148:VAL:HG21	2.21	0.40
1:A:379:SER:CB	1:A:387:PRO:HD3	2.51	0.40
2:B:342:TYR:HB3	2:B:348:ASN:HA	2.03	0.40
2:B:418:ASN:N	2:B:418:ASN:OD1	2.55	0.40
1:A:3:SER:OG	1:A:5:ILE:HG22	2.21	0.40
2:B:260:LEU:O	2:B:264:LEU:HG	2.21	0.40

There are no symmetry-related clashes.

5.3 Torsion angles [i](#)

5.3.1 Protein backbone [i](#)

In the following table, the Percentiles column shows the percent Ramachandran outliers of the chain as a percentile score with respect to all X-ray entries followed by that with respect to entries of similar resolution.

The Analysed column shows the number of residues for which the backbone conformation was analysed, and the total number of residues.

Mol	Chain	Analysed	Favoured	Allowed	Outliers	Percentiles
1	A	540/560 (96%)	479 (89%)	47 (9%)	14 (3%)	5 3
2	B	414/440 (94%)	378 (91%)	27 (6%)	9 (2%)	6 4
All	All	954/1000 (95%)	857 (90%)	74 (8%)	23 (2%)	6 3

All (23) Ramachandran outliers are listed below:

Mol	Chain	Res	Type
1	A	88	TRP
1	A	135	ILE
1	A	138	GLU
1	A	358	ARG

Continued on next page...

Continued from previous page...

Mol	Chain	Res	Type
1	A	112	GLY
1	A	139	THR
1	A	542	ILE
2	B	237	ASP
1	A	18	GLY
1	A	91	GLN
1	A	230	MET
1	A	360	ALA
2	B	44	GLU
2	B	172	ARG
2	B	162	SER
2	B	185	ASP
2	B	236	PRO
2	B	361	HIS
1	A	357	MET
2	B	94	ILE
2	B	95	PRO
1	A	133	PRO
1	A	111	VAL

5.3.2 Protein sidechains [i](#)

In the following table, the Percentiles column shows the percent sidechain outliers of the chain as a percentile score with respect to all X-ray entries followed by that with respect to entries of similar resolution.

The Analysed column shows the number of residues for which the sidechain conformation was analysed, and the total number of residues.

Mol	Chain	Analysed	Rotameric	Outliers	Percentiles
1	A	485/499 (97%)	420 (87%)	65 (13%)	4 3
2	B	380/400 (95%)	324 (85%)	56 (15%)	3 2
All	All	865/899 (96%)	744 (86%)	121 (14%)	3 3

All (121) residues with a non-rotameric sidechain are listed below:

Mol	Chain	Res	Type
1	A	11	LYS
1	A	21	VAL
1	A	30	LYS
1	A	42	GLU

Continued on next page...

Continued from previous page...

Mol	Chain	Res	Type
1	A	60	VAL
1	A	63	ILE
1	A	65	LYS
1	A	68	SER
1	A	72	ARG
1	A	92	LEU
1	A	97	PRO
1	A	105	SER
1	A	113	ASP
1	A	168	LEU
1	A	184	MET
1	A	194	GLU
1	A	197	GLN
1	A	205	LEU
1	A	208	HIS
1	A	221	HIS
1	A	225	PRO
1	A	228	LEU
1	A	234	LEU
1	A	240	THR
1	A	241	VAL
1	A	263	LYS
1	A	270	ILE
1	A	279	LEU
1	A	283	LEU
1	A	295	LEU
1	A	296	THR
1	A	297	GLU
1	A	303	LEU
1	A	309	ILE
1	A	311	LYS
1	A	313	PRO
1	A	315	HIS
1	A	317	VAL
1	A	336	GLN
1	A	340	GLN
1	A	357	MET
1	A	358	ARG
1	A	361	HIS
1	A	362	THR
1	A	368	LEU
1	A	369	THR

Continued on next page...

Continued from previous page...

Mol	Chain	Res	Type
1	A	373	GLN
1	A	386	THR
1	A	423	VAL
1	A	424	LYS
1	A	432	GLU
1	A	448	ARG
1	A	452	LEU
1	A	461	ARG
1	A	470	THR
1	A	474	ASN
1	A	475	GLN
1	A	480	GLN
1	A	491	LEU
1	A	493	VAL
1	A	503	LEU
1	A	513	SER
1	A	514	GLU
1	A	540	LYS
1	A	542	ILE
2	B	6	GLU
2	B	10	VAL
2	B	24	TRP
2	B	46	LYS
2	B	53	GLU
2	B	55	PRO
2	B	63	ILE
2	B	69	THR
2	B	84	THR
2	B	87	PHE
2	B	92	LEU
2	B	94	ILE
2	B	95	PRO
2	B	100	LEU
2	B	109	LEU
2	B	120	LEU
2	B	123	ASP
2	B	139	THR
2	B	145	GLN
2	B	161	GLN
2	B	162	SER
2	B	163	SER
2	B	170	PRO

Continued on next page...

Continued from previous page...

Mol	Chain	Res	Type
2	B	174	GLN
2	B	179	VAL
2	B	180	ILE
2	B	186	ASP
2	B	193	LEU
2	B	194	GLU
2	B	206	ARG
2	B	211	ARG
2	B	232	TYR
2	B	233	GLU
2	B	236	PRO
2	B	242	GLN
2	B	245	VAL
2	B	263	LYS
2	B	276	VAL
2	B	283	LEU
2	B	284	ARG
2	B	287	LYS
2	B	291	GLU
2	B	303	LEU
2	B	321	PRO
2	B	358	ARG
2	B	362	THR
2	B	363	ASN
2	B	368	LEU
2	B	379	SER
2	B	390	LYS
2	B	399	GLU
2	B	418	ASN
2	B	420	PRO
2	B	424	LYS
2	B	425	LEU
2	B	429	LEU

Sometimes sidechains can be flipped to improve hydrogen bonding and reduce clashes. All (16) such sidechains are listed below:

Mol	Chain	Res	Type
1	A	23	GLN
1	A	91	GLN
1	A	174	GLN
1	A	197	GLN
1	A	242	GLN

Continued on next page...

Continued from previous page...

Mol	Chain	Res	Type
1	A	332	GLN
1	A	336	GLN
1	A	475	GLN
1	A	480	GLN
1	A	512	GLN
2	B	57	ASN
2	B	85	GLN
2	B	151	GLN
2	B	242	GLN
2	B	269	GLN
2	B	361	HIS

5.3.3 RNA [i](#)

There are no RNA molecules in this entry.

5.4 Non-standard residues in protein, DNA, RNA chains [i](#)

1 non-standard protein/DNA/RNA residue is modelled in this entry.

In the following table, the Counts columns list the number of bonds (or angles) for which Mogul statistics could be retrieved, the number of bonds (or angles) that are observed in the model and the number of bonds (or angles) that are defined in the Chemical Component Dictionary. The Link column lists molecule types, if any, to which the group is linked. The Z score for a bond length (or angle) is the number of standard deviations the observed value is removed from the expected value. A bond length (or angle) with $|Z| > 2$ is considered an outlier worth inspection. RMSZ is the root-mean-square of all Z scores of the bond lengths (or angles).

Mol	Type	Chain	Res	Link	Bond lengths			Bond angles		
					Counts	RMSZ	$\# Z > 2$	Counts	RMSZ	$\# Z > 2$
1	CSD	A	280	1	3,7,8	1.30	0	1,8,10	5.26	1 (100%)

In the following table, the Chirals column lists the number of chiral outliers, the number of chiral centers analysed, the number of these observed in the model and the number defined in the Chemical Component Dictionary. Similar counts are reported in the Torsion and Rings columns. '-' means no outliers of that kind were identified.

Mol	Type	Chain	Res	Link	Chirals	Torsions	Rings
1	CSD	A	280	1	-	2/2/6/8	-

There are no bond length outliers.

All (1) bond angle outliers are listed below:

Mol	Chain	Res	Type	Atoms	Z	Observed($^{\circ}$)	Ideal($^{\circ}$)
1	A	280	CSD	OD1-SG-CB	5.26	115.55	105.54

There are no chirality outliers.

All (2) torsion outliers are listed below:

Mol	Chain	Res	Type	Atoms
1	A	280	CSD	N-CA-CB-SG
1	A	280	CSD	CA-CB-SG-OD1

There are no ring outliers.

1 monomer is involved in 1 short contact:

Mol	Chain	Res	Type	Clashes	Symm-Clashes
1	A	280	CSD	1	0

5.5 Carbohydrates [i](#)

There are no monosaccharides in this entry.

5.6 Ligand geometry [i](#)

1 ligand is modelled in this entry.

In the following table, the Counts columns list the number of bonds (or angles) for which Mogul statistics could be retrieved, the number of bonds (or angles) that are observed in the model and the number of bonds (or angles) that are defined in the Chemical Component Dictionary. The Link column lists molecule types, if any, to which the group is linked. The Z score for a bond length (or angle) is the number of standard deviations the observed value is removed from the expected value. A bond length (or angle) with $|Z| > 2$ is considered an outlier worth inspection. RMSZ is the root-mean-square of all Z scores of the bond lengths (or angles).

Mol	Type	Chain	Res	Link	Bond lengths			Bond angles		
					Counts	RMSZ	# $ Z > 2$	Counts	RMSZ	# $ Z > 2$
3	U05	A	999	-	21,24,24	1.77	4 (19%)	28,35,35	2.38	6 (21%)

In the following table, the Chirals column lists the number of chiral outliers, the number of chiral centers analysed, the number of these observed in the model and the number defined in the Chemical Component Dictionary. Similar counts are reported in the Torsion and Rings columns. '-' means no outliers of that kind were identified.

Mol	Type	Chain	Res	Link	Chirals	Torsions	Rings
3	U05	A	999	-	-	1/4/6/6	0/3/3/3

All (4) bond length outliers are listed below:

Mol	Chain	Res	Type	Atoms	Z	Observed(Å)	Ideal(Å)
3	A	999	U05	C9-N	3.87	1.54	1.45
3	A	999	U05	C14-N11	3.34	1.55	1.47
3	A	999	U05	C3-C4	2.85	1.44	1.38
3	A	999	U05	C8-C7	2.44	1.43	1.38

All (6) bond angle outliers are listed below:

Mol	Chain	Res	Type	Atoms	Z	Observed(°)	Ideal(°)
3	A	999	U05	C4A-C1A-N11	-6.63	115.60	120.73
3	A	999	U05	C6A-C11-N11	-5.66	116.23	121.61
3	A	999	U05	N1-C1A-N11	5.39	121.60	114.86
3	A	999	U05	C12-N6-C6A	-3.06	113.38	118.37
3	A	999	U05	C8-C9-N	2.71	121.42	119.38
3	A	999	U05	C1A-C4A-C5	-2.34	121.76	123.77

There are no chirality outliers.

All (1) torsion outliers are listed below:

Mol	Chain	Res	Type	Atoms
3	A	999	U05	C15-C14-N11-C1A

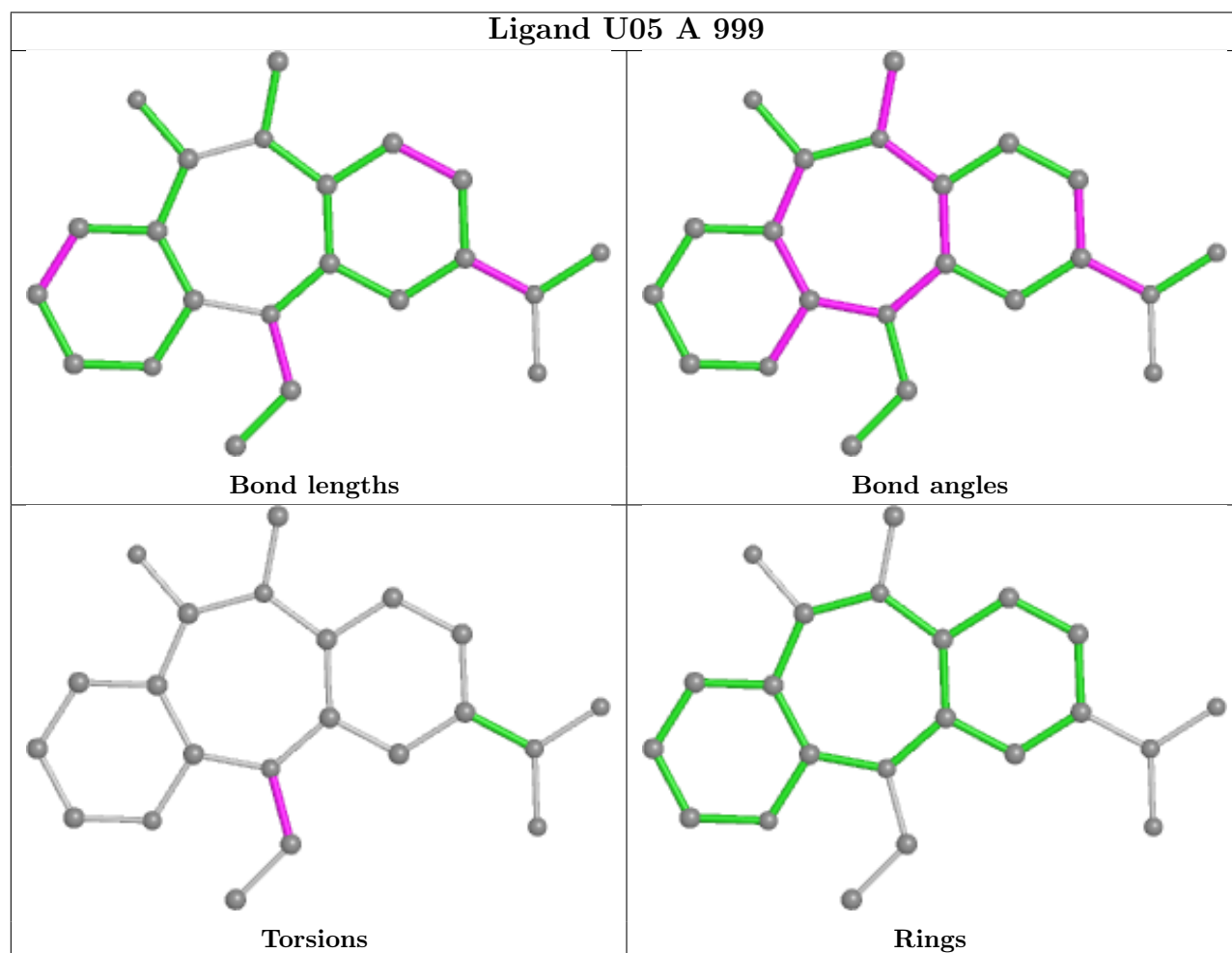
There are no ring outliers.

1 monomer is involved in 4 short contacts:

Mol	Chain	Res	Type	Clashes	Symm-Clashes
3	A	999	U05	4	0

The following is a two-dimensional graphical depiction of Mogul quality analysis of bond lengths, bond angles, torsion angles, and ring geometry for all instances of the Ligand of Interest. In addition, ligands with molecular weight > 250 and outliers as shown on the validation Tables will also be included. For torsion angles, if less than 5% of the Mogul distribution of torsion angles is within 10 degrees of the torsion angle in question, then that torsion angle is considered an outlier. Any bond that is central to one or more torsion angles identified as an outlier by Mogul will be highlighted in the graph. For rings, the root-mean-square deviation (RMSD) between the ring in question and similar rings identified by Mogul is calculated over all ring torsion angles. If the average RMSD is greater than 60 degrees and the minimal RMSD between the ring in question and any Mogul-identified rings is also greater than 60 degrees, then that ring is considered an outlier.

The outliers are highlighted in purple. The color gray indicates Mogul did not find sufficient equivalents in the CSD to analyse the geometry.



5.7 Other polymers [\(i\)](#)

There are no such residues in this entry.

5.8 Polymer linkage issues [\(i\)](#)

There are no chain breaks in this entry.

6 Fit of model and data

6.1 Protein, DNA and RNA chains

EDS was not executed - this section is therefore empty.

6.2 Non-standard residues in protein, DNA, RNA chains

EDS was not executed - this section is therefore empty.

6.3 Carbohydrates

EDS was not executed - this section is therefore empty.

6.4 Ligands

EDS was not executed - this section is therefore empty.

6.5 Other polymers

EDS was not executed - this section is therefore empty.