



# Full wwPDB X-ray Structure Validation Report ⓘ

Jun 11, 2024 – 05:58 PM EDT

PDB ID : 1QTQ  
Title : GLUTAMINYL-TRNA SYNTHETASE COMPLEXED WITH TRNA AND AN AMINO ACID ANALOG  
Authors : Rath, V.L.; Silvan, L.F.; Beijer, B.; Sproat, B.S.; Steitz, T.A.  
Deposited on : 1998-01-28  
Resolution : 2.25 Å(reported)

This is a Full wwPDB X-ray Structure Validation Report for a publicly released PDB entry.

We welcome your comments at [validation@mail.wwpdb.org](mailto:validation@mail.wwpdb.org)

A user guide is available at

<https://www.wwpdb.org/validation/2017/XrayValidationReportHelp>

with specific help available everywhere you see the ⓘ symbol.

The types of validation reports are described at

<http://www.wwpdb.org/validation/2017/FAQs#types>.

---

The following versions of software and data (see [references ⓘ](#)) were used in the production of this report:

MolProbity : 4.02b-467  
Mogul : 2022.3.0, CSD as543be (2022)  
Xtriage (Phenix) : 1.20.1  
EDS : 2.36.2  
buster-report : 1.1.7 (2018)  
Percentile statistics : 20191225.v01 (using entries in the PDB archive December 25th 2019)  
Refmac : 5.8.0158  
CCP4 : 7.0.044 (Gargrove)  
Ideal geometry (proteins) : Engh & Huber (2001)  
Ideal geometry (DNA, RNA) : Parkinson et al. (1996)  
Validation Pipeline (wwPDB-VP) : 2.36.2

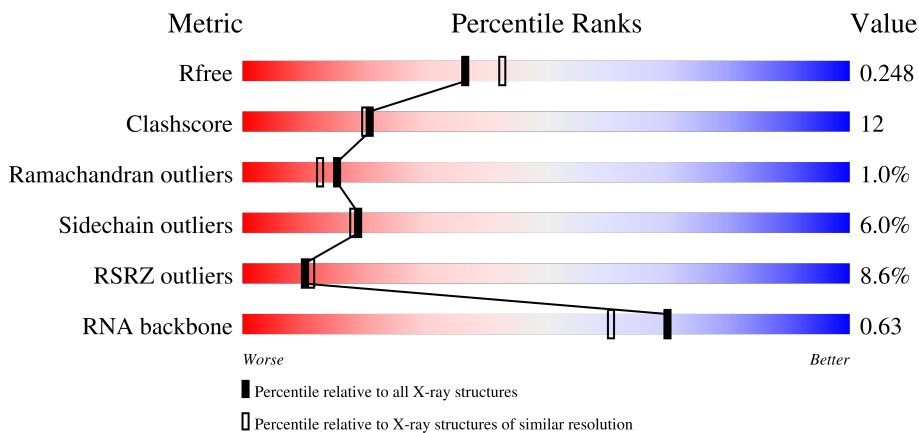
# 1 Overall quality at a glance i

The following experimental techniques were used to determine the structure:

*X-RAY DIFFRACTION*

The reported resolution of this entry is 2.25 Å.

Percentile scores (ranging between 0-100) for global validation metrics of the entry are shown in the following graphic. The table shows the number of entries on which the scores are based.



Metric	Whole archive (#Entries)	Similar resolution (#Entries, resolution range(Å))
$R_{free}$	130704	1377 (2.26-2.26)
Clashscore	141614	1487 (2.26-2.26)
Ramachandran outliers	138981	1449 (2.26-2.26)
Sidechain outliers	138945	1450 (2.26-2.26)
RSRZ outliers	127900	1356 (2.26-2.26)
RNA backbone	3102	1016 (2.66-1.86)

The table below summarises the geometric issues observed across the polymeric chains and their fit to the electron density. The red, orange, yellow and green segments of the lower bar indicate the fraction of residues that contain outliers for  $\geq 3$ , 2, 1 and 0 types of geometric quality criteria respectively. A grey segment represents the fraction of residues that are not modelled. The numeric value for each fraction is indicated below the corresponding segment, with a dot representing fractions  $\leq 5\%$ . The upper red bar (where present) indicates the fraction of residues that have poor fit to the electron density. The numeric value is given above the bar.

Mol	Chain	Length	Quality of chain
1	B	75	
2	A	553	

## 2 Entry composition [i](#)

There are 5 unique types of molecules in this entry. The entry contains 6061 atoms, of which 0 are hydrogens and 0 are deuteriums.

In the tables below, the ZeroOcc column contains the number of atoms modelled with zero occupancy, the AltConf column contains the number of residues with at least one atom in alternate conformation and the Trace column contains the number of residues modelled with at most 2 atoms.

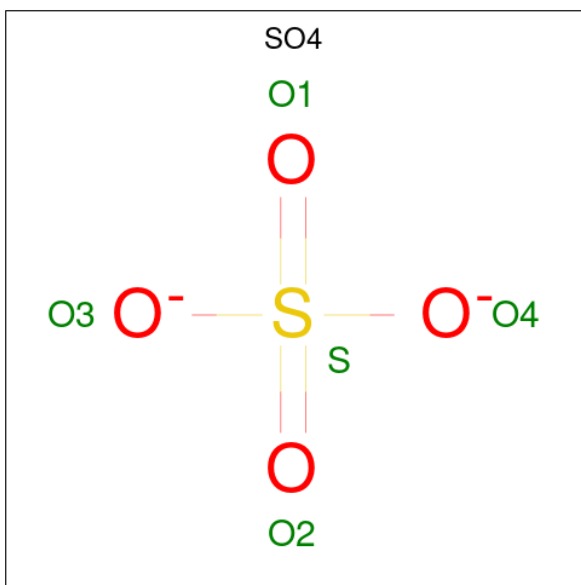
- Molecule 1 is a RNA chain called RNA (TRNA GLN II ).

Mol	Chain	Residues	Atoms					ZeroOcc	AltConf	Trace
			Total	C	N	O	P			
1	B	74	1570	702	279	516	73	0	0	0

- Molecule 2 is a protein called PROTEIN (GLUTAMINYL-TRNA SYNTHETASE).

Mol	Chain	Residues	Atoms					ZeroOcc	AltConf	Trace
			Total	C	N	O	S			
2	A	529	4279	2704	752	802	21	0	0	0

- Molecule 3 is SULFATE ION (three-letter code: SO4) (formula: O<sub>4</sub>S).



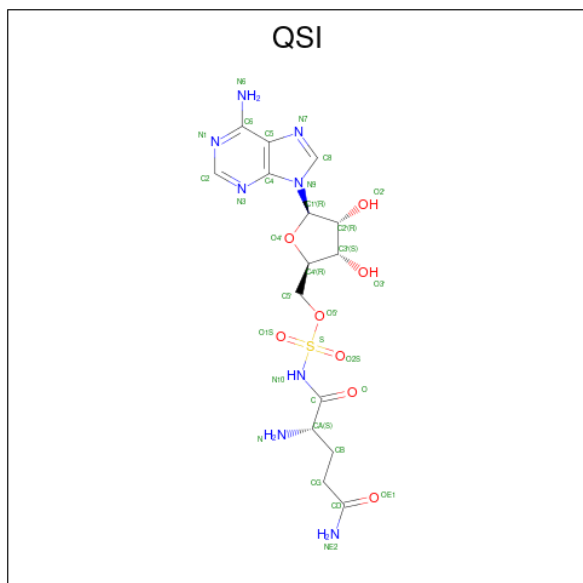
Mol	Chain	Residues	Atoms			ZeroOcc	AltConf
			Total	O	S		
3	A	1	5	4	1	0	0
3	A	1	5	4	1	0	0

*Continued on next page...*

Continued from previous page...

Mol	Chain	Residues	Atoms			ZeroOcc	AltConf
3	A	1	Total	O	S	0	0
			5	4	1		
3	A	1	Total	O	S	0	0
			5	4	1		

- Molecule 4 is 5'-O-[N-(L-GLUTAMINYL)-SULFAMOYL]ADENOSINE (three-letter code: QSI) (formula: C<sub>15</sub>H<sub>22</sub>N<sub>8</sub>O<sub>8</sub>S).



Mol	Chain	Residues	Atoms					ZeroOcc	AltConf
4	A	1	Total	C	N	O	S	0	0
			32	15	8	8	1		

- Molecule 5 is water.

Mol	Chain	Residues	Atoms		ZeroOcc	AltConf
5	B	25	Total	O	0	0
			25	25		
5	A	135	Total	O	0	0
			135	135		



## 4 Data and refinement statistics

Property	Value	Source
Space group	C 2 2 21	Depositor
Cell constants a, b, c, $\alpha$ , $\beta$ , $\gamma$	238.78Å 93.36Å 115.26Å 90.00° 90.00° 90.00°	Depositor
Resolution (Å)	30.00 – 2.25 28.00 – 2.25	Depositor EDS
% Data completeness (in resolution range)	83.6 (30.00-2.25) 83.7 (28.00-2.25)	Depositor EDS
$R_{merge}$	0.08	Depositor
$R_{sym}$	(Not available)	Depositor
$\langle I/\sigma(I) \rangle$ <sup>1</sup>	4.23 (at 2.24Å)	Xtrriage
Refinement program	X-PLOR 0.3	Depositor
R, $R_{free}$	0.244 , 0.254 0.237 , 0.248	Depositor DCC
$R_{free}$ test set	5205 reflections (10.13%)	wwPDB-VP
Wilson B-factor (Å <sup>2</sup> )	33.0	Xtrriage
Anisotropy	0.261	Xtrriage
Bulk solvent $k_{sol}$ (e/Å <sup>3</sup> ), $B_{sol}$ (Å <sup>2</sup> )	0.34 , 60.4	EDS
L-test for twinning <sup>2</sup>	$\langle  L  \rangle = 0.48$ , $\langle L^2 \rangle = 0.31$	Xtrriage
Estimated twinning fraction	No twinning to report.	Xtrriage
$F_o, F_c$ correlation	0.93	EDS
Total number of atoms	6061	wwPDB-VP
Average B, all atoms (Å <sup>2</sup> )	49.0	wwPDB-VP

Xtrriage's analysis on translational NCS is as follows: *The largest off-origin peak in the Patterson function is 3.66% of the height of the origin peak. No significant pseudotranslation is detected.*

<sup>1</sup>Intensities estimated from amplitudes.

<sup>2</sup>Theoretical values of  $\langle |L| \rangle$ ,  $\langle L^2 \rangle$  for acentric reflections are 0.5, 0.333 respectively for untwinned datasets, and 0.375, 0.2 for perfectly twinned datasets.

## 5 Model quality [i](#)

### 5.1 Standard geometry [i](#)

Bond lengths and bond angles in the following residue types are not validated in this section: QSI, SO4

The Z score for a bond length (or angle) is the number of standard deviations the observed value is removed from the expected value. A bond length (or angle) with  $|Z| > 5$  is considered an outlier worth inspection. RMSZ is the root-mean-square of all Z scores of the bond lengths (or angles).

Mol	Chain	Bond lengths		Bond angles	
		RMSZ	# Z  >5	RMSZ	# Z  >5
1	B	0.35	0/1753	0.67	0/2730
2	A	0.36	0/4379	0.60	1/5928 (0.0%)
All	All	0.35	0/6132	0.62	1/8658 (0.0%)

Chiral center outliers are detected by calculating the chiral volume of a chiral center and verifying if the center is modelled as a planar moiety or with the opposite hand. A planarity outlier is detected by checking planarity of atoms in a peptide group, atoms in a mainchain group or atoms of a sidechain that are expected to be planar.

Mol	Chain	#Chirality outliers	#Planarity outliers
1	B	0	1

There are no bond length outliers.

All (1) bond angle outliers are listed below:

Mol	Chain	Res	Type	Atoms	Z	Observed( $^{\circ}$ )	Ideal( $^{\circ}$ )
2	A	396	ALA	N-CA-C	7.32	130.76	111.00

There are no chirality outliers.

All (1) planarity outliers are listed below:

Mol	Chain	Res	Type	Group
1	B	915	G	Sidechain

### 5.2 Too-close contacts [i](#)

In the following table, the Non-H and H(model) columns list the number of non-hydrogen atoms and hydrogen atoms in the chain respectively. The H(added) column lists the number of hydrogen atoms added and optimized by MolProbity. The Clashes column lists the number of clashes within

the asymmetric unit, whereas Symm-Clashes lists symmetry-related clashes.

Mol	Chain	Non-H	H(model)	H(added)	Clashes	Symm-Clashes
1	B	1570	0	801	44	0
2	A	4279	0	4172	91	0
3	A	20	0	0	1	0
4	A	32	0	22	1	0
5	A	135	0	0	2	0
5	B	25	0	0	0	0
All	All	6061	0	4995	133	0

The all-atom clashscore is defined as the number of clashes found per 1000 atoms (including hydrogen atoms). The all-atom clashscore for this structure is 12.

All (133) close contacts within the same asymmetric unit are listed below, sorted by their clash magnitude.

Atom-1	Atom-2	Interatomic distance (Å)	Clash overlap (Å)
1:B:919:G:H1'	1:B:920:U:H5	1.28	0.99
1:B:946:U:H4'	1:B:947:U:C5	1.98	0.98
1:B:919:G:H1'	1:B:920:U:C5	2.10	0.85
1:B:960:U:H5''	1:B:961:C:H5	1.43	0.84
2:A:471:LEU:HB2	2:A:497:VAL:HG13	1.60	0.84
2:A:123:GLU:HG2	2:A:148:ARG:HH22	1.44	0.81
1:B:903:G:O2'	1:B:904:G:H5'	1.86	0.76
2:A:522:GLY:HA2	2:A:544:LEU:HD13	1.71	0.72
2:A:39:LEU:HD13	2:A:81:ILE:HG12	1.72	0.70
2:A:529:ARG:HA	2:A:529:ARG:HE	1.56	0.70
2:A:403:LEU:HD13	2:A:409:VAL:HG22	1.72	0.70
1:B:930:G:O2'	1:B:931:A:H5'	1.92	0.68
2:A:517:GLN:HG3	2:A:523:TYR:CE1	2.28	0.68
2:A:30:ARG:NH1	2:A:32:PRO:HG3	2.08	0.68
2:A:355:ASN:HB2	2:A:436:THR:HG22	1.78	0.65
2:A:100:SER:HB2	5:A:1065:HOH:O	1.99	0.63
2:A:121:VAL:H	2:A:153:ASN:ND2	1.97	0.63
1:B:946:U:H4'	1:B:947:U:C6	2.33	0.62
1:B:960:U:H5''	1:B:961:C:C5	2.31	0.62
1:B:963:U:H2'	1:B:964:C:C6	2.34	0.62
2:A:407:LYS:HG3	2:A:408:GLU:H	1.64	0.62
1:B:940:C:H2'	1:B:941:C:C6	2.34	0.62
2:A:136:LEU:HD23	2:A:183:ILE:HD11	1.81	0.62
2:A:232:GLU:HG3	5:A:1053:HOH:O	1.99	0.62
1:B:914:A:H2'	1:B:915:G:H5'	1.82	0.62
2:A:531:SER:HB3	2:A:537:VAL:H	1.66	0.61

*Continued on next page...*



*Continued from previous page...*

Atom-1	Atom-2	Interatomic distance (Å)	Clash overlap (Å)
2:A:40:HIS:HA	2:A:292:THR:HA	1.83	0.60
2:A:352:VAL:HG12	2:A:384:GLU:HG2	1.82	0.60
2:A:30:ARG:NH1	2:A:215:HIS:NE2	2.50	0.59
2:A:526:LEU:HG	2:A:527:ASP:H	1.67	0.59
2:A:39:LEU:CD1	2:A:81:ILE:HG12	2.33	0.59
1:B:914:A:C2'	1:B:915:G:H5'	2.34	0.58
2:A:401:LYS:O	2:A:454:GLY:HA3	2.06	0.56
2:A:125:THR:HG23	2:A:128:GLN:HE21	1.70	0.56
2:A:407:LYS:HG3	2:A:408:GLU:N	2.21	0.56
2:A:410:ARG:HD3	2:A:416:VAL:HG22	1.89	0.55
1:B:943:G:O2'	1:B:944:C:H5'	2.06	0.55
2:A:132:TYR:CD2	2:A:141:LYS:HG3	2.42	0.55
1:B:957:G:H2'	1:B:958:A:H5'	1.88	0.55
2:A:487:PHE:O	2:A:490:VAL:HG12	2.07	0.54
1:B:916:C:H4'	1:B:918:G:OP2	2.08	0.54
2:A:32:PRO:HA	2:A:64:ARG:O	2.08	0.54
2:A:301:TYR:CE2	2:A:327:LEU:HD22	2.43	0.54
1:B:976:A:H4'	2:A:34:GLU:OE1	2.07	0.54
2:A:236:ASN:H	2:A:236:ASN:HD22	1.57	0.53
1:B:931:A:C2	1:B:940:C:H1'	2.44	0.53
2:A:527:ASP:C	2:A:529:ARG:H	2.11	0.53
2:A:123:GLU:HG2	2:A:148:ARG:NH2	2.19	0.53
1:B:919:G:O3'	1:B:920:U:H6	1.91	0.52
2:A:522:GLY:HA2	2:A:544:LEU:CD1	2.39	0.52
1:B:953:G:O2'	1:B:954:U:H5'	2.10	0.51
2:A:415:TYR:CE1	2:A:442:LEU:HD22	2.46	0.51
1:B:961:C:H2'	1:B:962:C:H6	1.75	0.51
2:A:173:ARG:HD2	2:A:187:ASP:O	2.11	0.51
2:A:341:ARG:H	2:A:341:ARG:HD2	1.77	0.50
2:A:123:GLU:CG	2:A:148:ARG:HH22	2.20	0.50
1:B:908:U:H5'	1:B:949:C:OP2	2.11	0.50
2:A:531:SER:CB	2:A:537:VAL:H	2.25	0.50
1:B:939:U:H2'	1:B:940:C:O4'	2.12	0.49
2:A:423:GLU:HB2	2:A:434:PHE:HE1	1.77	0.49
2:A:249:ILE:HG13	2:A:250:PRO:HD2	1.95	0.49
2:A:438:ASP:HB3	2:A:441:THR:OG1	2.13	0.49
1:B:933:U:H2'	1:B:935:U:OP1	2.11	0.49
2:A:43:HIS:O	2:A:47:ILE:HG13	2.12	0.49
2:A:424:LYS:HA	2:A:430:ILE:HA	1.94	0.49
2:A:397:ASN:HD22	2:A:400:TYR:HB2	1.77	0.49
2:A:403:LEU:N	2:A:409:VAL:HG11	2.27	0.49

*Continued on next page...*

*Continued from previous page...*

Atom-1	Atom-2	Interatomic distance (Å)	Clash overlap (Å)
2:A:393:ARG:O	2:A:404:VAL:HA	2.13	0.49
2:A:145:TYR:O	2:A:148:ARG:HG3	2.12	0.48
2:A:159:LYS:HD2	2:A:165:PHE:CE2	2.48	0.48
2:A:123:GLU:HB2	2:A:145:TYR:CE2	2.48	0.48
2:A:77:TYR:O	2:A:81:ILE:HG13	2.14	0.48
2:A:394:GLU:HA	2:A:405:LEU:HB2	1.95	0.48
2:A:136:LEU:HD23	2:A:183:ILE:CD1	2.44	0.48
2:A:391:ASP:HA	2:A:402:ARG:HD2	1.96	0.48
1:B:962:C:H2'	1:B:963:U:C6	2.49	0.47
2:A:82:LYS:HD3	2:A:96:VAL:HG21	1.96	0.47
2:A:211:TYR:CE1	4:A:998:QSI:HG1	2.50	0.47
2:A:442:LEU:HD23	2:A:442:LEU:N	2.30	0.47
1:B:961:C:H2'	1:B:962:C:C6	2.50	0.47
2:A:123:GLU:HB2	2:A:145:TYR:CZ	2.50	0.46
1:B:908:U:C2	1:B:915:G:O6	2.68	0.46
1:B:950:G:O2'	1:B:951:A:H5'	2.15	0.46
1:B:908:U:H2'	1:B:913:A:N6	2.31	0.46
2:A:341:ARG:HD2	2:A:341:ARG:N	2.31	0.46
1:B:912:C:C2'	1:B:913:A:H5'	2.47	0.45
2:A:230:THR:HA	2:A:258:PHE:O	2.16	0.45
1:B:916:C:O5'	1:B:916:C:O2	2.34	0.45
1:B:936:G:H3'	1:B:937:A:C5'	2.45	0.45
2:A:64:ARG:HD3	2:A:222:GLU:OE2	2.17	0.45
2:A:230:THR:HG21	2:A:260:ARG:HB3	1.99	0.45
1:B:936:G:H3'	1:B:937:A:H5'	1.99	0.45
2:A:125:THR:HG23	2:A:128:GLN:NE2	2.32	0.45
2:A:343:MET:HE1	2:A:457:HIS:HA	1.99	0.45
1:B:939:U:O2'	1:B:940:C:H5'	2.16	0.45
1:B:922:A:H2'	1:B:923:G:O4'	2.17	0.44
2:A:331:ILE:HG13	2:A:335:LEU:HD22	2.00	0.44
1:B:919:G:C4	1:B:957:G:N2	2.86	0.44
2:A:44:ALA:HB2	2:A:293:ILE:HD11	2.00	0.44
2:A:363:VAL:HG22	2:A:379:VAL:O	2.18	0.44
2:A:178:MET:O	2:A:186:ARG:HD2	2.18	0.43
2:A:474:ARG:HE	2:A:474:ARG:HB3	1.67	0.43
2:A:463:HIS:O	2:A:505:PRO:HD3	2.19	0.43
2:A:531:SER:HA	2:A:537:VAL:HG23	2.01	0.43
2:A:238:ARG:N	2:A:238:ARG:HD2	2.34	0.43
2:A:180:SER:O	2:A:186:ARG:NH1	2.52	0.42
2:A:416:VAL:HG23	2:A:441:THR:HB	2.02	0.42
1:B:908:U:H2'	1:B:913:A:H61	1.85	0.42

*Continued on next page...*

Continued from previous page...

Atom-1	Atom-2	Interatomic distance (Å)	Clash overlap (Å)
2:A:45:LYS:HD2	2:A:261:LEU:HB2	2.02	0.42
1:B:935:U:C5	1:B:937:A:C2	3.08	0.42
2:A:298:ARG:HG3	2:A:527:ASP:OD2	2.20	0.42
1:B:903:G:C2'	1:B:904:G:H5'	2.48	0.41
2:A:433:ILE:HD12	2:A:433:ILE:N	2.34	0.41
2:A:526:LEU:O	2:A:527:ASP:HB3	2.20	0.41
2:A:350:LYS:O	2:A:432:THR:HA	2.19	0.41
1:B:941:C:H2'	1:B:942:G:H8	1.85	0.41
2:A:28:HIS:HE1	2:A:62:ASN:OD1	2.03	0.41
1:B:916:C:HO2'	1:B:918:G:P	2.44	0.41
2:A:30:ARG:NH2	2:A:228:LEU:O	2.54	0.41
2:A:301:TYR:CE2	2:A:331:ILE:HB	2.56	0.41
2:A:422:VAL:HG22	2:A:423:GLU:N	2.36	0.41
2:A:342:ALA:O	2:A:519:GLU:HB2	2.20	0.41
2:A:522:GLY:CA	2:A:544:LEU:HD13	2.45	0.41
1:B:912:C:H2'	1:B:913:A:H5'	2.03	0.41
1:B:916:C:O2'	1:B:918:G:P	2.79	0.41
2:A:301:TYR:HE2	2:A:327:LEU:HD22	1.85	0.41
1:B:916:C:N4	2:A:13:GLN:HE22	2.19	0.40
2:A:207:ILE:O	2:A:207:ILE:HG13	2.20	0.40
2:A:267:VAL:HB	3:A:1395:SO4:O1	2.20	0.40
2:A:517:GLN:HG3	2:A:523:TYR:CD1	2.56	0.40
2:A:349:VAL:HB	2:A:389:ARG:HG2	2.03	0.40
2:A:231:LEU:O	2:A:234:GLN:HG3	2.22	0.40
1:B:968:C:H2'	1:B:969:C:H6	1.87	0.40

There are no symmetry-related clashes.

## 5.3 Torsion angles [i](#)

### 5.3.1 Protein backbone [i](#)

In the following table, the Percentiles column shows the percent Ramachandran outliers of the chain as a percentile score with respect to all X-ray entries followed by that with respect to entries of similar resolution.

The Analysed column shows the number of residues for which the backbone conformation was analysed, and the total number of residues.

Mol	Chain	Analysed	Favoured	Allowed	Outliers	Percentiles
2	A	525/553 (95%)	501 (95%)	19 (4%)	5 (1%)	<b>15</b> <b>13</b>

All (5) Ramachandran outliers are listed below:

Mol	Chain	Res	Type
2	A	397	ASN
2	A	527	ASP
2	A	32	PRO
2	A	526	LEU
2	A	176	ILE

### 5.3.2 Protein sidechains [i](#)

In the following table, the Percentiles column shows the percent sidechain outliers of the chain as a percentile score with respect to all X-ray entries followed by that with respect to entries of similar resolution.

The Analysed column shows the number of residues for which the sidechain conformation was analysed, and the total number of residues.

Mol	Chain	Analysed	Rotameric	Outliers	Percentiles
2	A	463/481 (96%)	435 (94%)	28 (6%)	19 18

All (28) residues with a non-rotameric sidechain are listed below:

Mol	Chain	Res	Type
2	A	19	LEU
2	A	30	ARG
2	A	32	PRO
2	A	49	LEU
2	A	66	ASP
2	A	78	VAL
2	A	100	SER
2	A	105	GLN
2	A	106	LEU
2	A	124	LEU
2	A	154	LEU
2	A	156	LEU
2	A	190	LEU
2	A	192	ARG
2	A	231	LEU
2	A	232	GLU
2	A	327	LEU
2	A	341	ARG
2	A	357	GLN
2	A	397	ASN

*Continued on next page...*

*Continued from previous page...*

Mol	Chain	Res	Type
2	A	408	GLU
2	A	412	ARG
2	A	437	TYR
2	A	441	THR
2	A	442	LEU
2	A	475	LEU
2	A	497	VAL
2	A	528	SER

Sometimes sidechains can be flipped to improve hydrogen bonding and reduce clashes. All (13) such sidechains are listed below:

Mol	Chain	Res	Type
2	A	28	HIS
2	A	107	HIS
2	A	115	ASN
2	A	128	GLN
2	A	142	ASN
2	A	153	ASN
2	A	226	HIS
2	A	236	ASN
2	A	318	GLN
2	A	355	ASN
2	A	368	HIS
2	A	397	ASN
2	A	457	HIS

### 5.3.3 RNA [i](#)

Mol	Chain	Analysed	Backbone Outliers	Pucker Outliers
1	B	73/75 (97%)	7 (9%)	1 (1%)

All (7) RNA backbone outliers are listed below:

Mol	Chain	Res	Type
1	B	918	G
1	B	921	A
1	B	935	U
1	B	936	G
1	B	937	A
1	B	941	C

*Continued on next page...*

Continued from previous page...

Mol	Chain	Res	Type
1	B	946	U

All (1) RNA pucker outliers are listed below:

Mol	Chain	Res	Type
1	B	916	C

## 5.4 Non-standard residues in protein, DNA, RNA chains [i](#)

There are no non-standard protein/DNA/RNA residues in this entry.

## 5.5 Carbohydrates [i](#)

There are no monosaccharides in this entry.

## 5.6 Ligand geometry [i](#)

5 ligands are modelled in this entry.

In the following table, the Counts columns list the number of bonds (or angles) for which Mogul statistics could be retrieved, the number of bonds (or angles) that are observed in the model and the number of bonds (or angles) that are defined in the Chemical Component Dictionary. The Link column lists molecule types, if any, to which the group is linked. The Z score for a bond length (or angle) is the number of standard deviations the observed value is removed from the expected value. A bond length (or angle) with  $|Z| > 2$  is considered an outlier worth inspection. RMSZ is the root-mean-square of all Z scores of the bond lengths (or angles).

Mol	Type	Chain	Res	Link	Bond lengths			Bond angles		
					Counts	RMSZ	$\# Z  > 2$	Counts	RMSZ	$\# Z  > 2$
3	SO4	A	1395	-	4,4,4	0.34	0	6,6,6	0.08	0
3	SO4	A	1394	-	4,4,4	0.34	0	6,6,6	0.07	0
3	SO4	A	1393	-	4,4,4	0.36	0	6,6,6	0.08	0
3	SO4	A	1396	-	4,4,4	0.39	0	6,6,6	0.08	0
4	QSI	A	998	-	30,34,34	1.44	3 (10%)	33,50,50	1.37	4 (12%)

In the following table, the Chirals column lists the number of chiral outliers, the number of chiral centers analysed, the number of these observed in the model and the number defined in the Chemical Component Dictionary. Similar counts are reported in the Torsion and Rings columns. '2' means no outliers of that kind were identified.

Mol	Type	Chain	Res	Link	Chirals	Torsions	Rings
4	QSI	A	998	-	-	8/19/40/40	0/3/3/3

All (3) bond length outliers are listed below:

Mol	Chain	Res	Type	Atoms	Z	Observed(Å)	Ideal(Å)
4	A	998	QSI	O1S-S	4.68	1.46	1.42
4	A	998	QSI	O2S-S	4.38	1.46	1.42
4	A	998	QSI	S-N10	2.29	1.63	1.59

All (4) bond angle outliers are listed below:

Mol	Chain	Res	Type	Atoms	Z	Observed(°)	Ideal(°)
4	A	998	QSI	O2S-S-O1S	-4.67	113.86	120.85
4	A	998	QSI	O5'-C5'-C4'	2.75	112.47	107.57
4	A	998	QSI	O-C-CA	2.39	125.32	120.28
4	A	998	QSI	O5'-S-N10	2.07	111.05	105.69

There are no chirality outliers.

All (8) torsion outliers are listed below:

Mol	Chain	Res	Type	Atoms
4	A	998	QSI	C5'-O5'-S-N10
4	A	998	QSI	C3'-C4'-C5'-O5'
4	A	998	QSI	O4'-C4'-C5'-O5'
4	A	998	QSI	O-C-CA-N
4	A	998	QSI	N10-C-CA-N
4	A	998	QSI	CA-CB-CG-CD
4	A	998	QSI	C5'-O5'-S-O1S
4	A	998	QSI	C5'-O5'-S-O2S

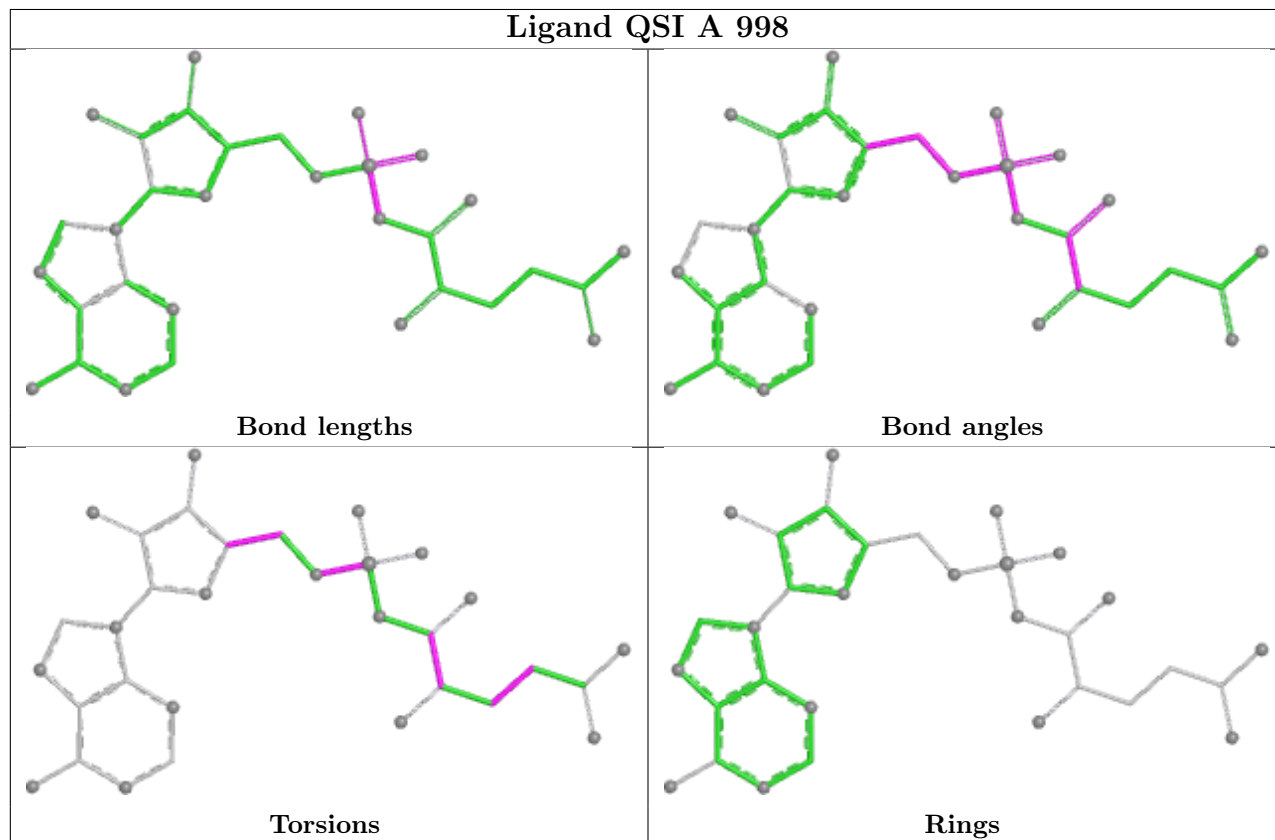
There are no ring outliers.

2 monomers are involved in 2 short contacts:

Mol	Chain	Res	Type	Clashes	Symm-Clashes
3	A	1395	SO4	1	0
4	A	998	QSI	1	0

The following is a two-dimensional graphical depiction of Mogul quality analysis of bond lengths, bond angles, torsion angles, and ring geometry for all instances of the Ligand of Interest. In addition, ligands with molecular weight > 250 and outliers as shown on the validation Tables will also be included. For torsion angles, if less than 5% of the Mogul distribution of torsion angles is within 10 degrees of the torsion angle in question, then that torsion angle is considered an outlier.

Any bond that is central to one or more torsion angles identified as an outlier by Mogul will be highlighted in the graph. For rings, the root-mean-square deviation (RMSD) between the ring in question and similar rings identified by Mogul is calculated over all ring torsion angles. If the average RMSD is greater than 60 degrees and the minimal RMSD between the ring in question and any Mogul-identified rings is also greater than 60 degrees, then that ring is considered an outlier. The outliers are highlighted in purple. The color gray indicates Mogul did not find sufficient equivalents in the CSD to analyse the geometry.



## 5.7 Other polymers [i](#)

There are no such residues in this entry.

## 5.8 Polymer linkage issues [i](#)

There are no chain breaks in this entry.



## 6 Fit of model and data

### 6.1 Protein, DNA and RNA chains

In the following table, the column labelled ‘#RSRZ > 2’ contains the number (and percentage) of RSRZ outliers, followed by percent RSRZ outliers for the chain as percentile scores relative to all X-ray entries and entries of similar resolution. The OWAB column contains the minimum, median, 95<sup>th</sup> percentile and maximum values of the occupancy-weighted average B-factor per residue. The column labelled ‘Q < 0.9’ lists the number of (and percentage) of residues with an average occupancy less than 0.9.

Mol	Chain	Analysed	<RSRZ>	#RSRZ>2	OWAB(Å <sup>2</sup> )	Q<0.9
1	B	74/75 (98%)	0.41	7 (9%) 8 8	24, 59, 89, 99	0
2	A	529/553 (95%)	0.25	45 (8%) 10 12	17, 39, 86, 98	0
All	All	603/628 (96%)	0.27	52 (8%) 10 11	17, 40, 88, 99	0

All (52) RSRZ outliers are listed below:

Mol	Chain	Res	Type	RSRZ
1	B	947	U	7.6
1	B	946	U	7.0
2	A	397	ASN	5.2
2	A	426	ALA	5.1
2	A	439	ALA	5.0
2	A	399	GLN	4.4
2	A	411	LEU	3.8
2	A	427	GLU	3.6
2	A	458	TRP	3.2
2	A	398	LYS	3.2
2	A	534	GLU	3.2
2	A	528	SER	3.2
2	A	429	ASN	3.1
2	A	456	ILE	3.1
2	A	405	LEU	2.9
2	A	420	GLU	2.9
2	A	440	ASP	2.8
2	A	527	ASP	2.8
2	A	385	ILE	2.7
2	A	191	TYR	2.7
2	A	209	PRO	2.6
2	A	396	ALA	2.5
2	A	407	LYS	2.5
2	A	425	ASP	2.5

*Continued on next page...*

*Continued from previous page...*

Mol	Chain	Res	Type	RSRZ
2	A	354	GLU	2.4
2	A	387	ILE	2.4
2	A	419	ALA	2.4
2	A	422	VAL	2.4
2	A	441	THR	2.3
2	A	138	GLN	2.3
2	A	344	ALA	2.3
2	A	535	LYS	2.3
2	A	409	VAL	2.3
2	A	357	GLN	2.3
2	A	210	MET	2.3
1	B	929	G	2.3
2	A	271	ARG	2.3
2	A	529	ARG	2.2
2	A	358	GLY	2.2
2	A	213	PHE	2.2
2	A	190	LEU	2.2
1	B	942	G	2.2
2	A	372	PRO	2.2
2	A	343	MET	2.2
2	A	408	GLU	2.2
2	A	214	THR	2.2
1	B	964	C	2.2
2	A	428	GLY	2.1
2	A	189	VAL	2.1
2	A	393	ARG	2.1
1	B	930	G	2.0
1	B	940	C	2.0

## 6.2 Non-standard residues in protein, DNA, RNA chains [i](#)

There are no non-standard protein/DNA/RNA residues in this entry.

## 6.3 Carbohydrates [i](#)

There are no monosaccharides in this entry.

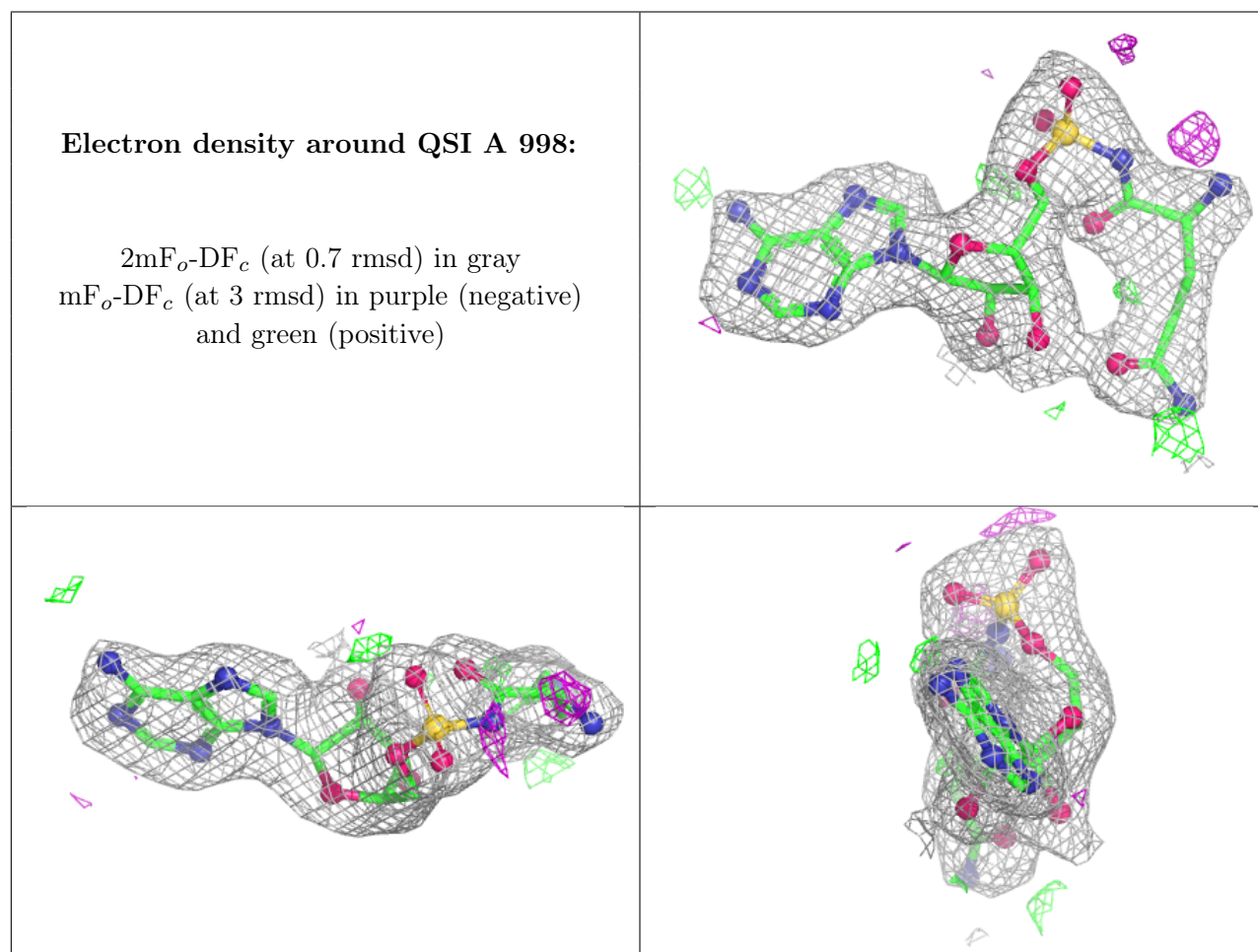
## 6.4 Ligands [i](#)

In the following table, the Atoms column lists the number of modelled atoms in the group and the number defined in the chemical component dictionary. The B-factors column lists the minimum,

median, 95<sup>th</sup> percentile and maximum values of B factors of atoms in the group. The column labelled 'Q< 0.9' lists the number of atoms with occupancy less than 0.9.

Mol	Type	Chain	Res	Atoms	RSCC	RSR	B-factors(Å <sup>2</sup> )	Q<0.9
3	SO4	A	1396	5/5	0.82	0.16	87,93,98,98	0
3	SO4	A	1393	5/5	0.87	0.26	84,84,89,90	0
3	SO4	A	1395	5/5	0.95	0.15	90,92,96,97	0
4	QSI	A	998	32/32	0.96	0.20	28,40,50,54	0
3	SO4	A	1394	5/5	0.97	0.18	64,66,70,72	0

The following is a graphical depiction of the model fit to experimental electron density of all instances of the Ligand of Interest. In addition, ligands with molecular weight > 250 and outliers as shown on the geometry validation Tables will also be included. Each fit is shown from different orientation to approximate a three-dimensional view.



## 6.5 Other polymers [\(i\)](#)

There are no such residues in this entry.